

2014-15 School Profile

BALCH SPRINGS MIDDLE SCHOOL (TEA # 352)



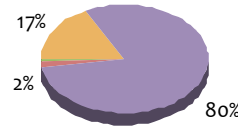
710 CHEYENNE RD DALLAS, TX 75180

Phone: 972-892-5800 FAX: 972-892-5801 www.dallasisd.org/balchsprings

Middle school with grades 6–8 in DIVISION 5 and the SPRUCE feeder pattern.

Principal: CLARITA RIVERA (CRIVERA@DALLASISD.ORG)

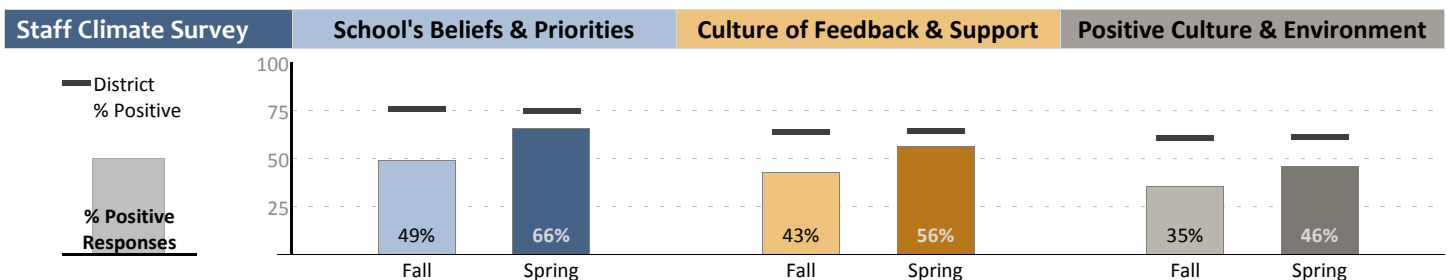
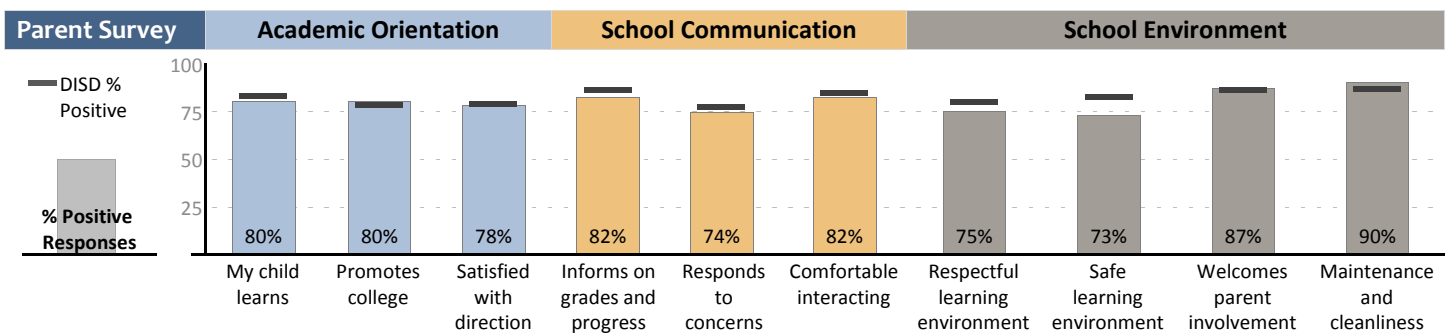
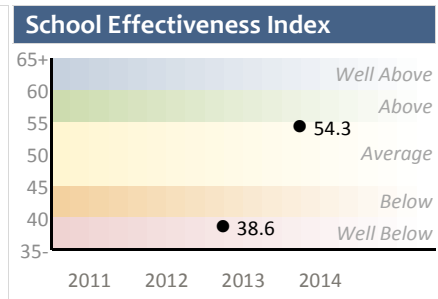
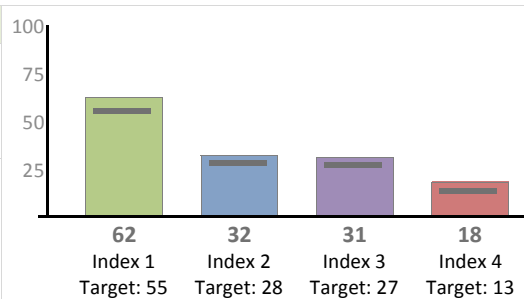
Grd	Attendance Target: 96%	Enrollment		% of Grade Level			
		N	% Sch	Afr. Am.	Hispanic	White	Other
6	96.9% ✓	488	34.7%	16.6%	80.9%	2.0%	0.4%
7	96.5% ✓	493	35.1%	17.0%	80.3%	1.6%	1.2%
8	95.4% ✗	425	30.2%	18.8%	78.1%	2.8%	0.2%
ALL	96.3% ✓	1,406	–	17.4%	79.9%	2.1%	0.6%



Student Group Enrollment		
		% of School
At Risk	1,005	79.1%
LEP	548	43.1%
Low SES	1,204	94.7%
SPED	139	10.9%
TAG	183	14.4%

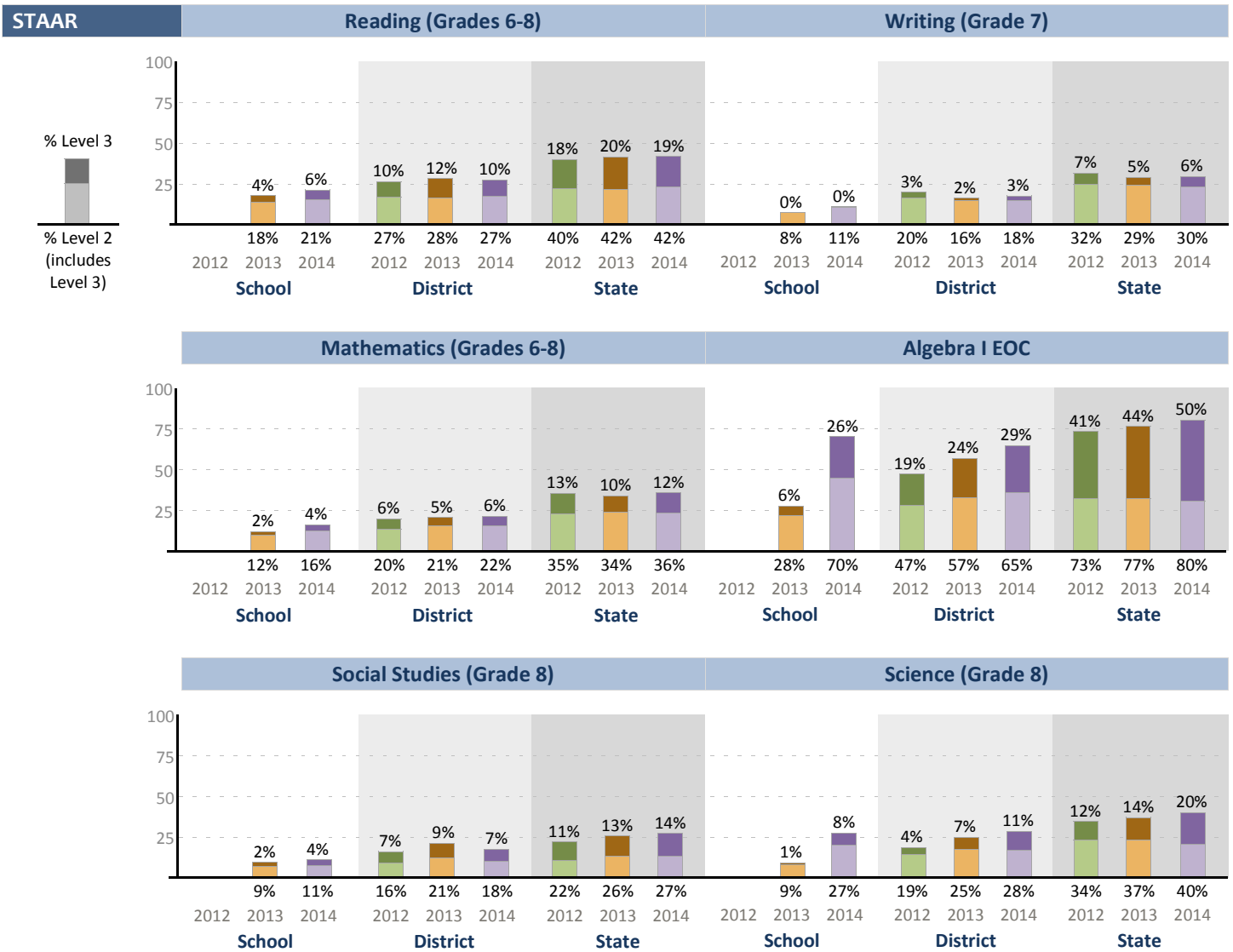
Attendance / Retention		2011-12	2012-13	2013-14
Students	Average student attendance rate	--	95.8%	↑ 96.3%
	Percentage of students absent fewer than 10% of days enrolled at campus	--	90.2%	↑ 92.0%
Teachers	Average number of absences	--	6.1	↑ 9.2
	Percentage of teachers who returned to campus from prior year	--	--	72.6%

AEIS	Met Standard
Index Definitions	1: Student Achievement 2: Student Progress 3: Closing Performance Gaps 4: Postsecondary Readiness
Distinctions	- Achievement in reading



2014-15 School Profile

BALCH SPRINGS MIDDLE SCHOOL (TEA # 352)



2014-15 School Profile Middle School Metric and Term Definitions



Attendance

Student attendance rate	Average of students' attendance rates (number of days in attendance out of number of days enrolled). The Destination 2020 target for middle schools is 96%.
Students absent fewer than 10% of days enrolled	An indicator of how many students are in regular attendance. Percentage of students with fewer than 10% absences (excused or unexcused) is based on a snapshot taken at the end of the fifth six-week grading period.

Enrollment

Number enrolled by grade (N)	Average daily enrollment at the campus during the school year.
Percentage enrolled by grade (% Sch)	Grade-level percentage of total school enrollment.
Percentage in grade by race/ethnicity (% of Grade Level)	Percentage of students within grade level identified as African American, Hispanic, white, or other. Identification in a category provided by parents/guardians at registration. Students identified as Hispanic are not counted elsewhere.
Percentage enrolled by student group	Counts taken at the end of fifth six-week grading period based on data in student information system. Students may be classified in more than one or no student groups.

Teachers

Teacher absences	Average number of days not at campus, such as for illness or personal business. Absence counts do not include vacation days or leave.
Teachers returning to campus	Percentage of teachers from previous school year who continued at the school. The number of teachers at the school in both current and previous years is divided by the number of teachers in the previous year.

Academic Excellence Indicator System (AEIS) - State of Texas

AEIS rating	School must meet all targets to achieve "Met Standard." Missing at least one target results in "Needs Improvement." Schools can earn distinctions for student achievement in math, reading, science, and social studies; top 25% (among comparable schools) in student progress; top 25% in closing performance gaps; and postsecondary readiness.
-------------	--

School Effectiveness Index (SEI) - Dallas ISD

SEI	A measure of performance on assessments that is relative to other district campuses. Isolates the school's effect on student outcomes by controlling for differences that the school cannot control, such as socio-economic status and prior achievement levels.
-----	--

Parent Survey

Percentage positive responses	Survey conducted May 2014. Positive responses include Agree and Strongly Agree. Other responses included Disagree, Strongly Disagree, and Neutral.
-------------------------------	--

Staff Climate Survey

Percentage positive responses	Surveys conducted November 2013 and May 2014. Positive responses include Agree and Strongly Agree. Other responses included Disagree, Strongly Disagree, and Neutral.
-------------------------------	---

State of Texas Assessment of Academic Readiness (STAAR)

Percentage at Level 2	Percentage of all tests with satisfactory (Level 2) scores using panel-recommended standards. STAAR results only. District and state statistics are based on grade levels at the campus. Satisfactory performance indicates a reasonable likelihood of success in the next grade or course.
Percentage at Level 3	Percentage of all tests with advanced (Level 3) scores. Scores at Level 3 are a subset of scores at Level 2 (satisfactory). Advanced performance indicates a high likelihood of success in the next grade or course.