

# NATIONAL STUDENT CLEARINGHOUSE<sup>®</sup>

## StudentTracker<sup>®</sup> for High Schools Demographics Report

Prepared for  
DALLAS INDEPENDENT SCHOOL DISTRICT  
NCES Code: 4816230

DALLAS INDEPENDENT SCHOOL DISTRICT

Report Run Date: 04/11/2017 08:48 PM

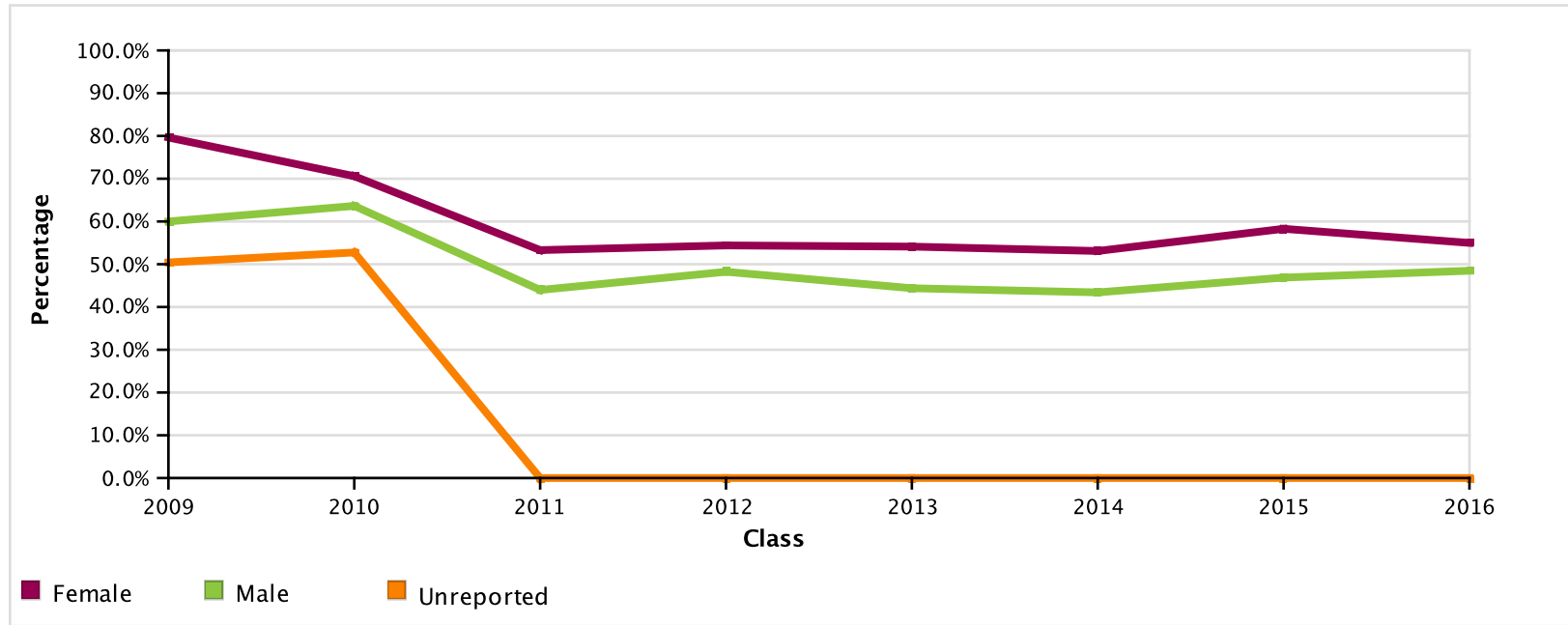
Page 1 of 31

NATIONAL STUDENT  
CLEARINGHOUSE<sup>®</sup>

©2012 National Student Clearinghouse. All rights reserved

# StudentTracker Demographics Report

Enrollment During First Fall Immediately After High School by Gender  
Effective as of : April 6, 2017



	2009	2010	2011	2012	2013	2014	2015	2016
Total Number of Students in Class	6452	7047	7209	7208	7695	7350	7424	7461

<b>Female</b>	# of students in cohort	54	51	3,771	3,752	3,980	3,874	3,900	3,950
	# of students meeting outcome	43	36	2,010	2,041	2,154	2,057	2,273	2,172
	% of students meeting outcome	79.6%	70.6%	53.3%	54.4%	54.1%	53.1%	58.3%	55.0%
<b>Male</b>	# of students in cohort	10	11	3,438	3,456	3,715	3,476	3,524	3,511
	# of students meeting outcome	6	7	1,512	1,667	1,649	1,509	1,652	1,702
	% of students meeting outcome	60.0%	63.6%	44.0%	48.2%	44.4%	43.4%	46.9%	48.5%
<b>Unreported</b>	# of students in cohort	6,388	6,985	0	0	0	0	0	0
	# of students meeting outcome	3,221	3,685	*	*	*	*	*	*
	% of students meeting outcome	50.4%	52.8%	*	*	*	*	*	*

\* To protect student privacy, small cell values have been masked for subgroups containing fewer than 10 students; these are represented with a star (\*). Because of this, the corresponding point on the graph should be disregarded. Also, if the total number of students in all subgroups for a class is less than 10, then the entire class is suppressed.

DALLAS INDEPENDENT SCHOOL DISTRICT

Report Run Date: 04/11/2017 08:48 PM

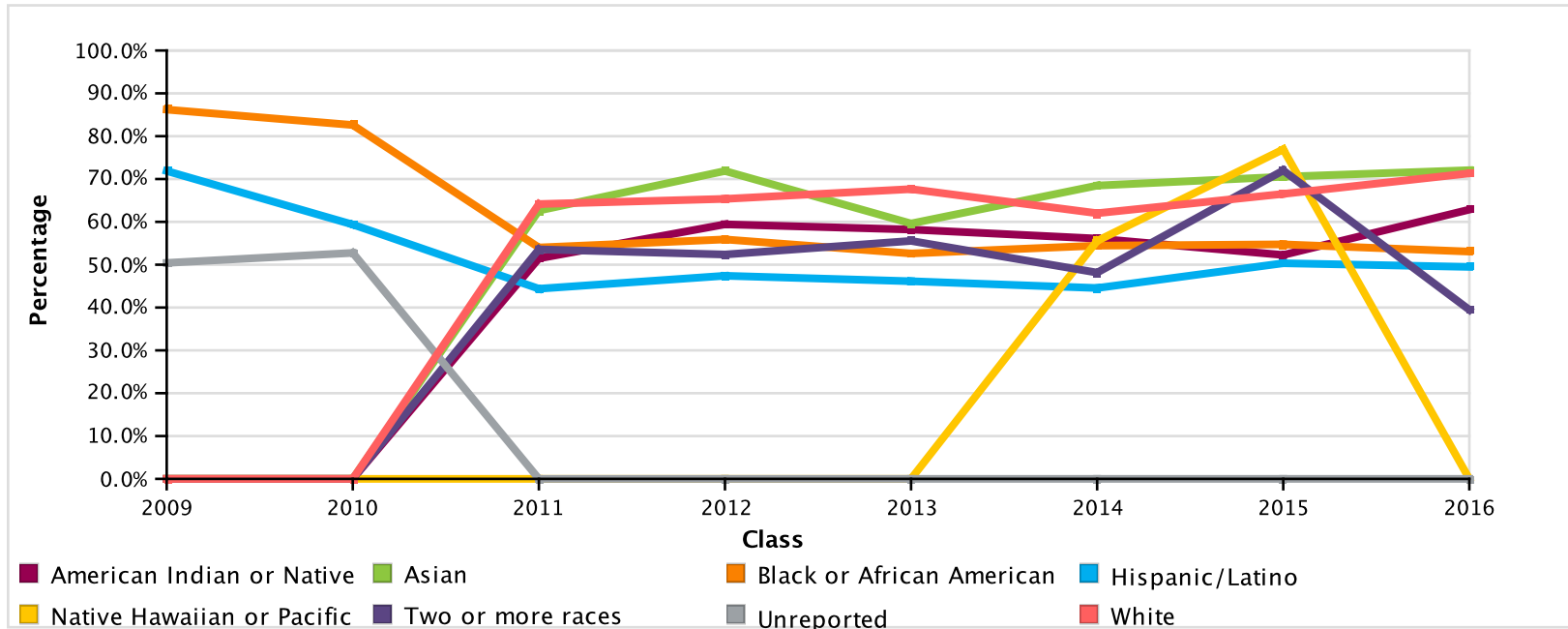
Page 2 of 31

**NATIONAL STUDENT  
CLEARINGHOUSE**

©2012 National Student Clearinghouse. All rights reserved

# StudentTracker Demographics Report

Enrollment During First Fall Immediately After High School by Race/Ethnicity  
Effective as of : April 6, 2017



	2009	2010	2011	2012	2013	2014	2015	2016
Total Number of Students in Class	6452	7047	7209	7208	7695	7350	7424	7461

<b>American Indian or Native Alaskan</b>	# of students in cohort	0	1	68	69	67	41	44	35
	# of students meeting outcome	*	*	35	41	39	23	23	22
	% of students meeting outcome	*	*	51.5%	59.4%	58.2%	56.1%	52.3%	62.9%
<b>Asian</b>	# of students in cohort	0	1	91	96	104	111	112	136
	# of students meeting outcome	*	*	57	69	62	76	79	98
	% of students meeting outcome	*	*	62.6%	71.9%	59.6%	68.5%	70.5%	72.1%
<b>Black or African American</b>	# of students in cohort	29	23	2,170	2,043	2,060	1,879	1,845	1,681
	# of students meeting outcome	25	19	1,172	1,142	1,084	1,023	1,010	892
	% of students meeting outcome	86.2%	82.6%	54.0%	55.9%	52.6%	54.4%	54.7%	53.1%

DALLAS INDEPENDENT SCHOOL DISTRICT

Report Run Date: 04/11/2017 08:48 PM

Page 3 of 31

**NATIONAL STUDENT  
CLEARINGHOUSE**

©2012 National Student Clearinghouse. All rights reserved

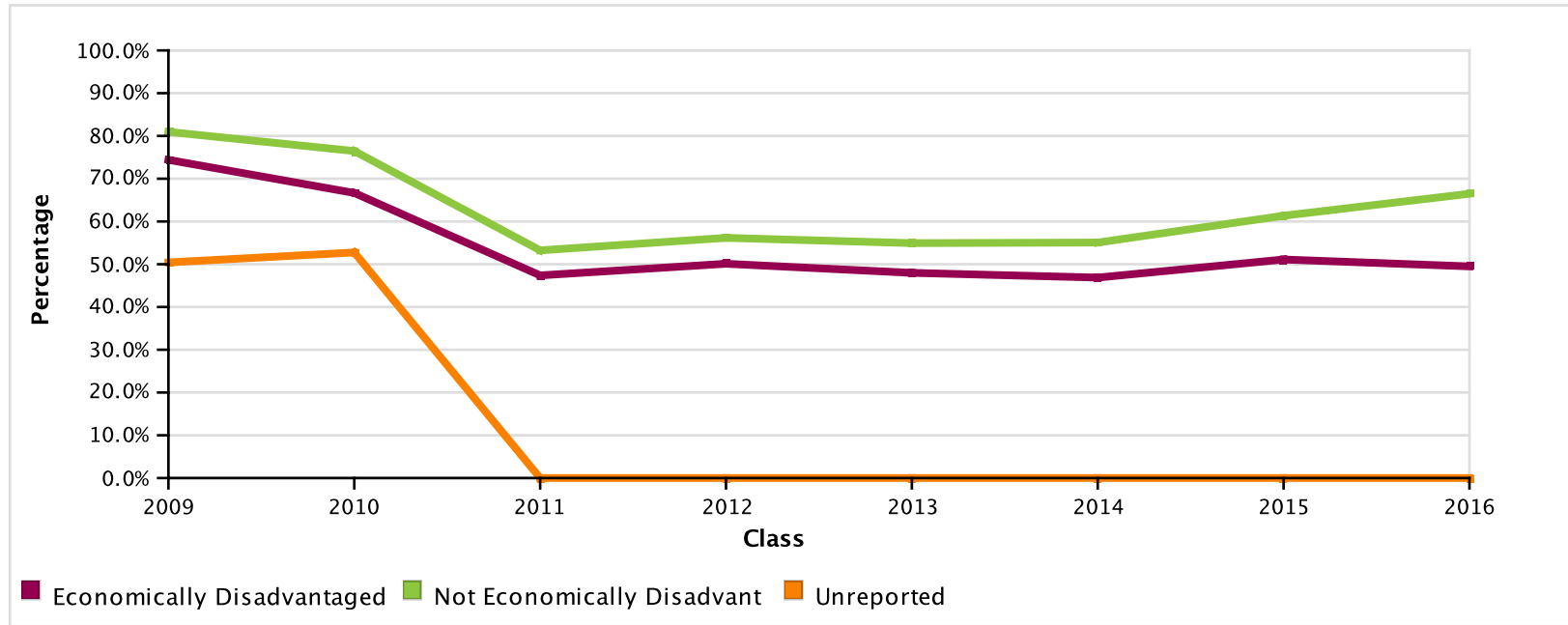
<b>Hispanic/Latino</b>	# of students in cohort	32	32	4,406	4,516	4,989	4,866	4,925	5,163
	# of students meeting outcome	23	19	1,956	2,141	2,302	2,168	2,479	2,555
	% of students meeting outcome	71.9%	59.4%	44.4%	47.4%	46.1%	44.6%	50.3%	49.5%
<b>Two or more races</b>	# of students in cohort	0	0	28	21	27	27	25	38
	# of students meeting outcome	*	*	15	11	15	13	18	15
	% of students meeting outcome	*	*	53.6%	52.4%	55.6%	48.1%	72.0%	39.5%
<b>Native Hawaiian or Pacific Islander</b>	# of students in cohort	0	0	8	4	6	18	13	7
	# of students meeting outcome	*	*	*	*	*	10	10	*
	% of students meeting outcome	*	*	*	*	*	55.6%	76.9%	*
<b>Unreported</b>	# of students in cohort	6,388	6,985	0	0	0	0	0	0
	# of students meeting outcome	3,221	3,685	*	*	*	*	*	*
	% of students meeting outcome	50.4%	52.8%	*	*	*	*	*	*
<b>White</b>	# of students in cohort	3	5	438	459	442	408	460	401
	# of students meeting outcome	*	*	281	300	299	253	306	286
	% of students meeting outcome	*	*	64.2%	65.4%	67.6%	62.0%	66.5%	71.3%

\* To protect student privacy, small cell values have been masked for subgroups containing fewer than 10 students; these are represented with a star (\*). Because of this, the corresponding point on the graph should be disregarded. Also, if the total number of students in all subgroups for a class is less than 10, then the entire class is suppressed.

# StudentTracker Demographics Report

## Enrollment During First Fall Immediately After High School by Economic Disadvantage

Effective as of : April 6, 2017



	2009	2010	2011	2012	2013	2014	2015	2016
Total Number of Students in Class	6452	7047	7209	7208	7695	7350	7424	7461

<b>Economically Disadvantaged</b>	# of students in cohort	43	45	5,406	5,620	6,104	5,879	6,146	6,393
	# of students meeting outcome	32	30	2,562	2,816	2,929	2,756	3,141	3,164
	% of students meeting outcome	74.4%	66.7%	47.4%	50.1%	48.0%	46.9%	51.1%	49.5%
<b>Not Economically Disadvantaged</b>	# of students in cohort	21	17	1,803	1,588	1,591	1,471	1,278	1,068
	# of students meeting outcome	17	13	960	892	874	810	784	710
	% of students meeting outcome	81.0%	76.5%	53.2%	56.2%	54.9%	55.1%	61.3%	66.5%
<b>Unreported</b>	# of students in cohort	6,388	6,985	0	0	0	0	0	0
	# of students meeting outcome	3,221	3,685	*	*	*	*	*	*
	% of students meeting outcome	50.4%	52.8%	*	*	*	*	*	*

\* To protect student privacy, small cell values have been masked for subgroups containing fewer than 10 students; these are represented with a star (\*). Because of this, the corresponding point on the graph should be disregarded. Also, if the total number of students in all subgroups for a class is less than 10, then the entire class is suppressed.

DALLAS INDEPENDENT SCHOOL DISTRICT

Report Run Date: 04/11/2017 08:48 PM

Page 5 of 31

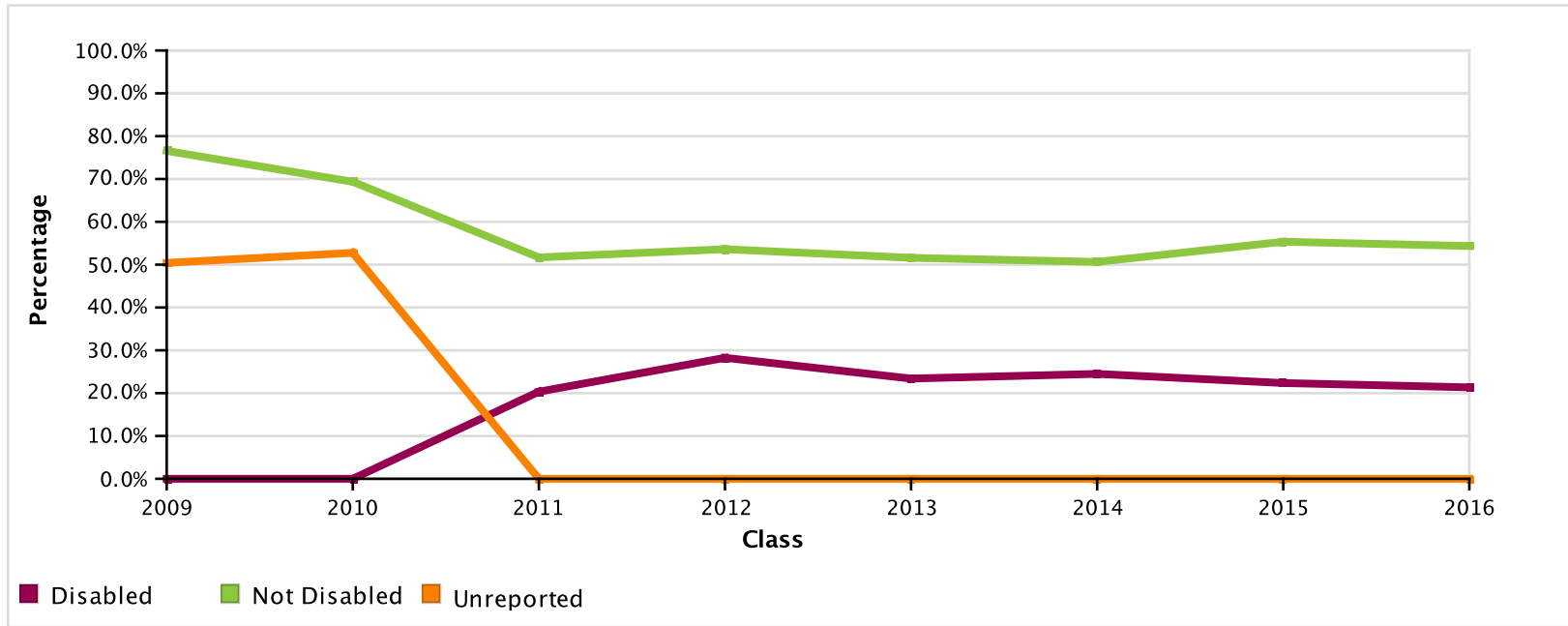
**NATIONAL STUDENT  
CLEARINGHOUSE**

©2012 National Student Clearinghouse. All rights reserved

# StudentTracker Demographics Report

## Enrollment During First Fall Immediately After High School by Disability

Effective as of : April 6, 2017



	2009	2010	2011	2012	2013	2014	2015	2016
Total Number of Students in Class	6452	7047	7209	7208	7695	7350	7424	7461

<b>Disabled</b>	# of students in cohort	0	0	654	616	594	596	559	548
	# of students meeting outcome	*	*	133	174	139	146	125	117
	% of students meeting outcome	*	*	20.3%	28.2%	23.4%	24.5%	22.4%	21.4%
<b>Not Disabled</b>	# of students in cohort	64	62	6,555	6,592	7,101	6,754	6,865	6,913
	# of students meeting outcome	49	43	3,389	3,534	3,664	3,420	3,800	3,757
	% of students meeting outcome	76.6%	69.4%	51.7%	53.6%	51.6%	50.6%	55.4%	54.3%
<b>Unreported</b>	# of students in cohort	6,388	6,985	0	0	0	0	0	0
	# of students meeting outcome	3,221	3,685	*	*	*	*	*	*
	% of students meeting outcome	50.4%	52.8%	*	*	*	*	*	*

\* To protect student privacy, small cell values have been masked for subgroups containing fewer than 10 students; these are represented with a star (\*). Because of this, the corresponding point on the graph should be disregarded. Also, if the total number of students in all subgroups for a class is less than 10, then the entire class is suppressed.

DALLAS INDEPENDENT SCHOOL DISTRICT

Report Run Date: 04/11/2017 08:48 PM

Page 6 of 31

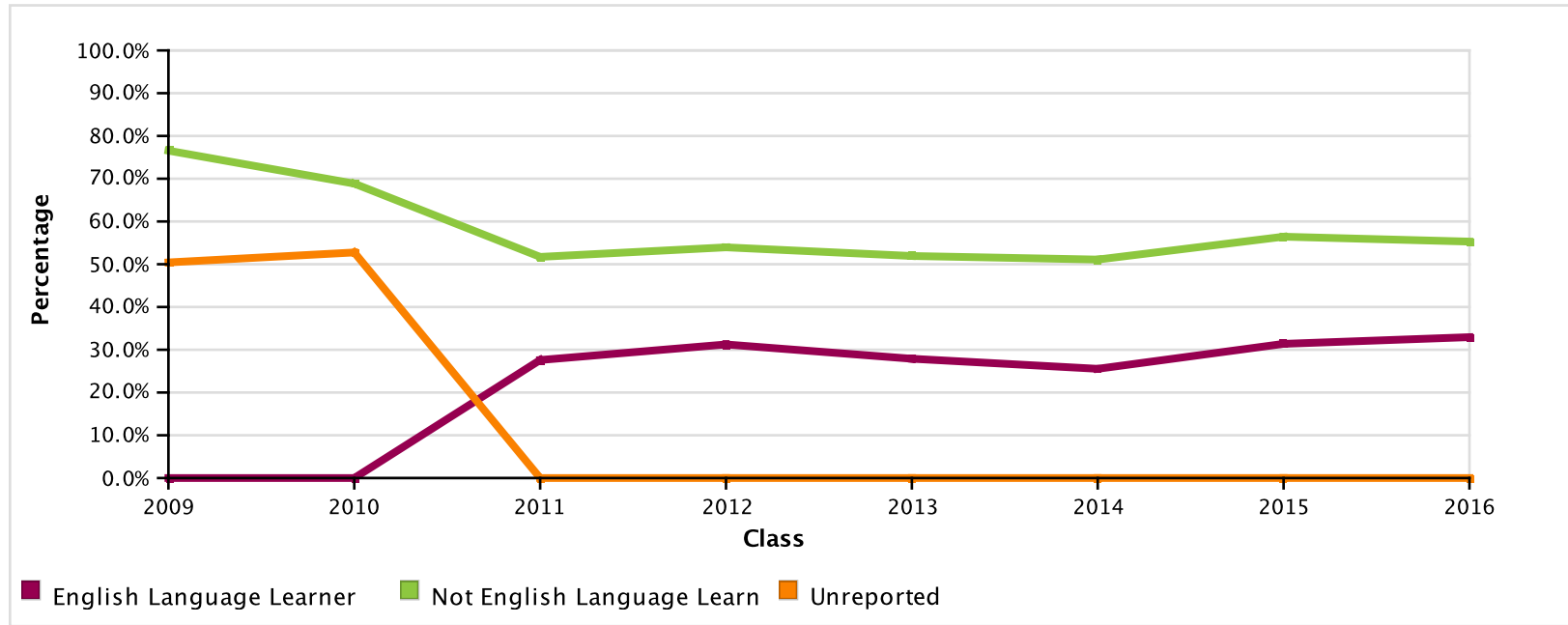
**NATIONAL STUDENT  
CLEARINGHOUSE**

©2012 National Student Clearinghouse. All rights reserved

# StudentTracker Demographics Report

## Enrollment During First Fall Immediately After High School by English Language Learner

Effective as of : April 6, 2017



	2009	2010	2011	2012	2013	2014	2015	2016
Total Number of Students in Class	6452	7047	7209	7208	7695	7350	7424	7461

<b>English Language Learner</b>	# of students in cohort	0	1	855	797	803	740	1,058	1,126
	# of students meeting outcome	*	*	236	249	224	189	332	371
	% of students meeting outcome	*	*	27.6%	31.2%	27.9%	25.5%	31.4%	32.9%
<b>Not English Language Learner</b>	# of students in cohort	64	61	6,354	6,411	6,892	6,610	6,366	6,335
	# of students meeting outcome	49	42	3,286	3,459	3,579	3,377	3,593	3,503
	% of students meeting outcome	76.6%	68.9%	51.7%	54.0%	51.9%	51.1%	56.4%	55.3%
<b>Unreported</b>	# of students in cohort	6,388	6,985	0	0	0	0	0	0
	# of students meeting outcome	3,221	3,685	*	*	*	*	*	*
	% of students meeting outcome	50.4%	52.8%	*	*	*	*	*	*

\* To protect student privacy, small cell values have been masked for subgroups containing fewer than 10 students; these are represented with a star (\*). Because of this, the corresponding point on the graph should be disregarded. Also, if the total number of students in all subgroups for a class is less than 10, then the entire class is suppressed.

DALLAS INDEPENDENT SCHOOL DISTRICT

Report Run Date: 04/11/2017 08:48 PM

Page 7 of 31

**NATIONAL STUDENT  
CLEARINGHOUSE**

©2012 National Student Clearinghouse. All rights reserved

# StudentTracker Demographics Report

Enrollment Any Time During the First Year After High School by Gender  
Effective as of : April 6, 2017



	2009	2010	2011	2012	2013	2014	2015	2016
Total Number of Students in Class	6452	7047	7209	7208	7695	7350	7424	7461

<b>Female</b>	# of students in cohort	54	51	3,771	3,752	3,980	3,874	3,900	3,950
	# of students meeting outcome	48	38	2,259	2,288	2,410	2,271	2,454	2,336
	% of students meeting outcome	88.9%	74.5%	59.9%	61.0%	60.6%	58.6%	62.9%	59.1%
<b>Male</b>	# of students in cohort	10	11	3,438	3,456	3,715	3,476	3,524	3,511
	# of students meeting outcome	7	8	1,786	1,886	1,913	1,703	1,825	1,840
	% of students meeting outcome	70.0%	72.7%	51.9%	54.6%	51.5%	49.0%	51.8%	52.4%
<b>Unreported</b>	# of students in cohort	6,388	6,985	0	0	0	0	0	0
	# of students meeting outcome	3,688	4,168	*	*	*	*	*	*
	% of students meeting outcome	57.7%	59.7%	*	*	*	*	*	*

\* To protect student privacy, small cell values have been masked for subgroups containing fewer than 10 students; these are represented with a star (\*). Because of this, the corresponding point on the graph should be disregarded. Also, if the total number of students in all subgroups for a class is less than 10, then the entire class is suppressed.

DALLAS INDEPENDENT SCHOOL DISTRICT

Report Run Date: 04/11/2017 08:48 PM

Page 8 of 31

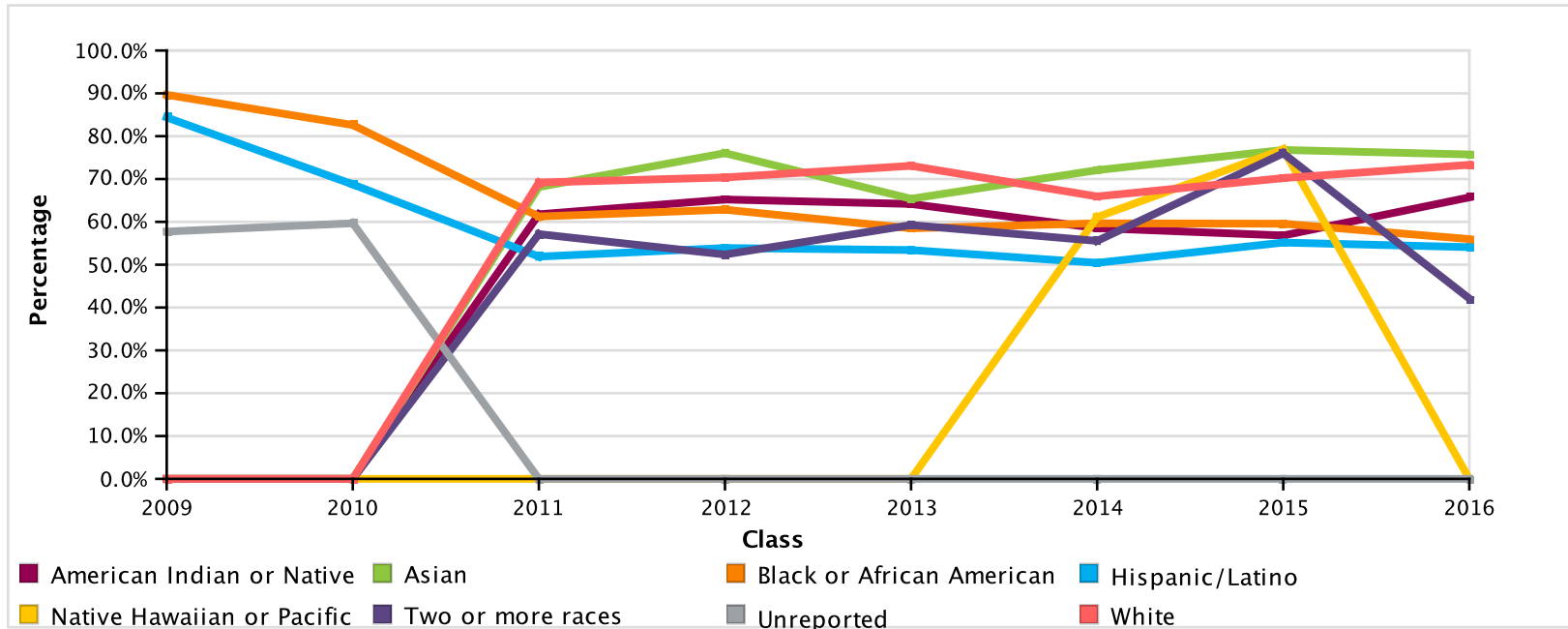
**NATIONAL STUDENT  
CLEARINGHOUSE**

©2012 National Student Clearinghouse. All rights reserved



# StudentTracker Demographics Report

Enrollment Any Time During the First Year After High School by Race/Ethnicity  
Effective as of : April 6, 2017



	2009	2010	2011	2012	2013	2014	2015	2016
Total Number of Students in Class	6452	7047	7209	7208	7695	7350	7424	7461

<b>American Indian or Native Alaskan</b>	# of students in cohort	0	1	68	69	67	41	44	35
	# of students meeting outcome	*	*	42	45	43	24	25	23
	% of students meeting outcome	*	*	61.8%	65.2%	64.2%	58.5%	56.8%	65.7%
<b>Asian</b>	# of students in cohort	0	1	91	96	104	111	112	136
	# of students meeting outcome	*	*	62	73	68	80	86	103
	% of students meeting outcome	*	*	68.1%	76.0%	65.4%	72.1%	76.8%	75.7%
<b>Black or African American</b>	# of students in cohort	29	23	2,170	2,043	2,060	1,879	1,845	1,681
	# of students meeting outcome	26	19	1,329	1,284	1,205	1,121	1,099	941
	% of students meeting outcome	89.7%	82.6%	61.2%	62.8%	58.5%	59.7%	59.6%	56.0%

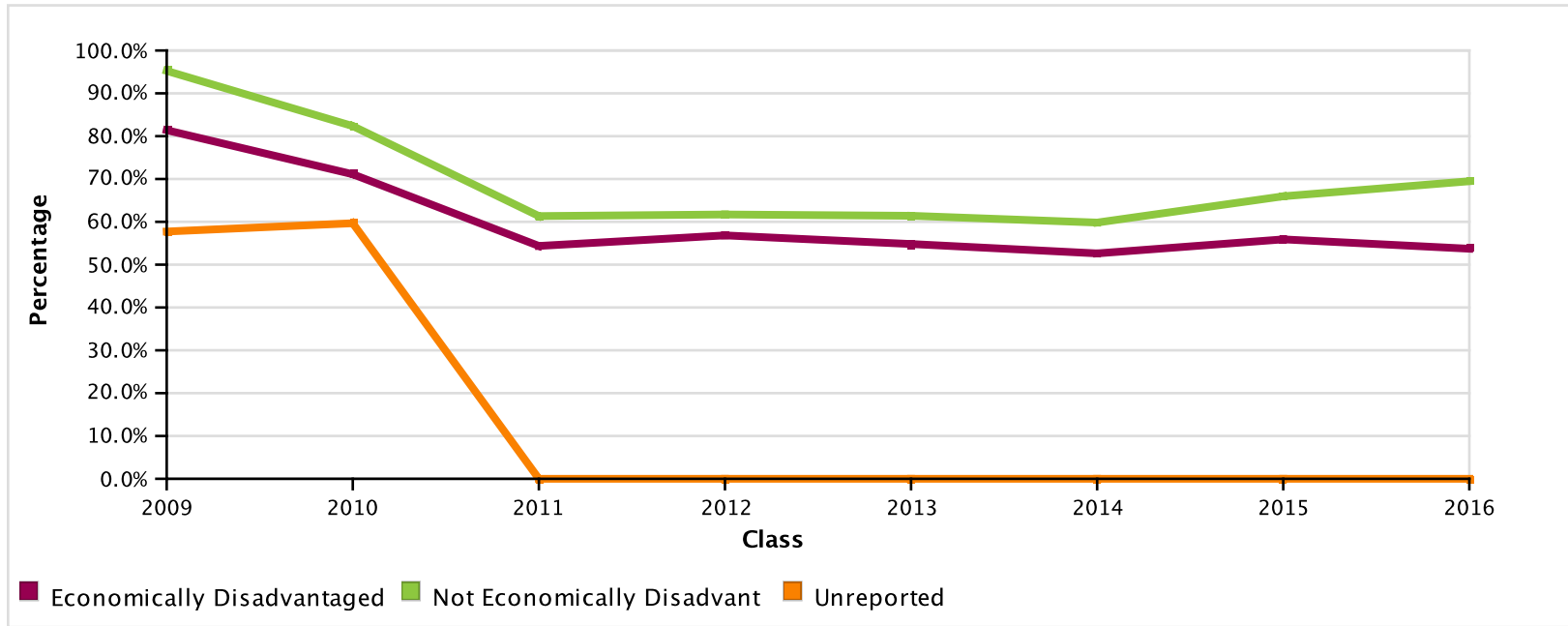
<b>Hispanic/Latino</b>	# of students in cohort	32	32	4,406	4,516	4,989	4,866	4,925	5,163
	# of students meeting outcome	27	22	2,286	2,434	2,665	2,454	2,717	2,793
	% of students meeting outcome	84.4%	68.8%	51.9%	53.9%	53.4%	50.4%	55.2%	54.1%
<b>Two or more races</b>	# of students in cohort	0	0	28	21	27	27	25	38
	# of students meeting outcome	*	*	16	11	16	15	19	16
	% of students meeting outcome	*	*	57.1%	52.4%	59.3%	55.6%	76.0%	42.1%
<b>Native Hawaiian or Pacific Islander</b>	# of students in cohort	0	0	8	4	6	18	13	7
	# of students meeting outcome	*	*	*	*	*	11	10	*
	% of students meeting outcome	*	*	*	*	*	61.1%	76.9%	*
<b>Unreported</b>	# of students in cohort	6,388	6,985	0	0	0	0	0	0
	# of students meeting outcome	3,688	4,168	*	*	*	*	*	*
	% of students meeting outcome	57.7%	59.7%	*	*	*	*	*	*
<b>White</b>	# of students in cohort	3	5	438	459	442	408	460	401
	# of students meeting outcome	*	*	303	323	323	269	323	294
	% of students meeting outcome	*	*	69.2%	70.4%	73.1%	65.9%	70.2%	73.3%

\* To protect student privacy, small cell values have been masked for subgroups containing fewer than 10 students; these are represented with a star (\*). Because of this, the corresponding point on the graph should be disregarded. Also, if the total number of students in all subgroups for a class is less than 10, then the entire class is suppressed.

# StudentTracker Demographics Report

## Enrollment Any Time During the First Year After High School by Economic Disadvantage

Effective as of : April 6, 2017



	2009	2010	2011	2012	2013	2014	2015	2016
Total Number of Students in Class	6452	7047	7209	7208	7695	7350	7424	7461

<b>Economically Disadvantaged</b>	# of students in cohort	43	45	5,406	5,620	6,104	5,879	6,146	6,393
	# of students meeting outcome	35	32	2,939	3,194	3,346	3,094	3,436	3,434
	% of students meeting outcome	81.4%	71.1%	54.4%	56.8%	54.8%	52.6%	55.9%	53.7%
<b>Not Economically Disadvantaged</b>	# of students in cohort	21	17	1,803	1,588	1,591	1,471	1,278	1,068
	# of students meeting outcome	20	14	1,106	980	977	880	843	742
	% of students meeting outcome	95.2%	82.4%	61.3%	61.7%	61.4%	59.8%	66.0%	69.5%
<b>Unreported</b>	# of students in cohort	6,388	6,985	0	0	0	0	0	0
	# of students meeting outcome	3,688	4,168	*	*	*	*	*	*
	% of students meeting outcome	57.7%	59.7%	*	*	*	*	*	*

\* To protect student privacy, small cell values have been masked for subgroups containing fewer than 10 students; these are represented with a star (\*). Because of this, the corresponding point on the graph should be disregarded. Also, if the total number of students in all subgroups for a class is less than 10, then the entire class is suppressed.

DALLAS INDEPENDENT SCHOOL DISTRICT

Report Run Date: 04/11/2017 08:48 PM

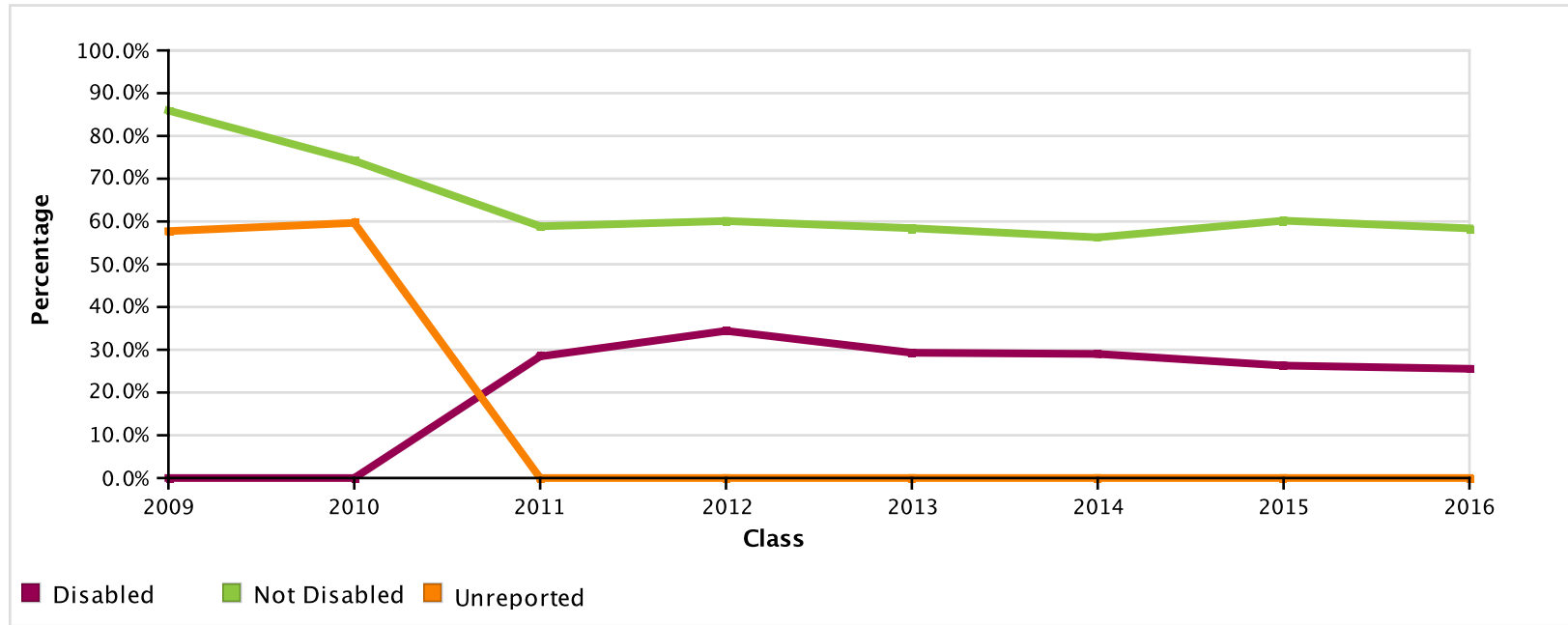
Page 11 of 31

**NATIONAL STUDENT  
CLEARINGHOUSE**

©2012 National Student Clearinghouse. All rights reserved

# StudentTracker Demographics Report

Enrollment Any Time During the First Year After High School by Disability  
Effective as of : April 6, 2017



	2009	2010	2011	2012	2013	2014	2015	2016
Total Number of Students in Class	6452	7047	7209	7208	7695	7350	7424	7461

<b>Disabled</b>	# of students in cohort	0	0	654	616	594	596	559	548
	# of students meeting outcome	*	*	186	212	174	173	147	140
	% of students meeting outcome	*	*	28.4%	34.4%	29.3%	29.0%	26.3%	25.5%
<b>Not Disabled</b>	# of students in cohort	64	62	6,555	6,592	7,101	6,754	6,865	6,913
	# of students meeting outcome	55	46	3,859	3,962	4,149	3,801	4,132	4,036
	% of students meeting outcome	85.9%	74.2%	58.9%	60.1%	58.4%	56.3%	60.2%	58.4%
<b>Unreported</b>	# of students in cohort	6,388	6,985	0	0	0	0	0	0
	# of students meeting outcome	3,688	4,168	*	*	*	*	*	*
	% of students meeting outcome	57.7%	59.7%	*	*	*	*	*	*

\* To protect student privacy, small cell values have been masked for subgroups containing fewer than 10 students; these are represented with a star (\*). Because of this, the corresponding point on the graph should be disregarded. Also, if the total number of students in all subgroups for a class is less than 10, then the entire class is suppressed.

DALLAS INDEPENDENT SCHOOL DISTRICT

Report Run Date: 04/11/2017 08:48 PM

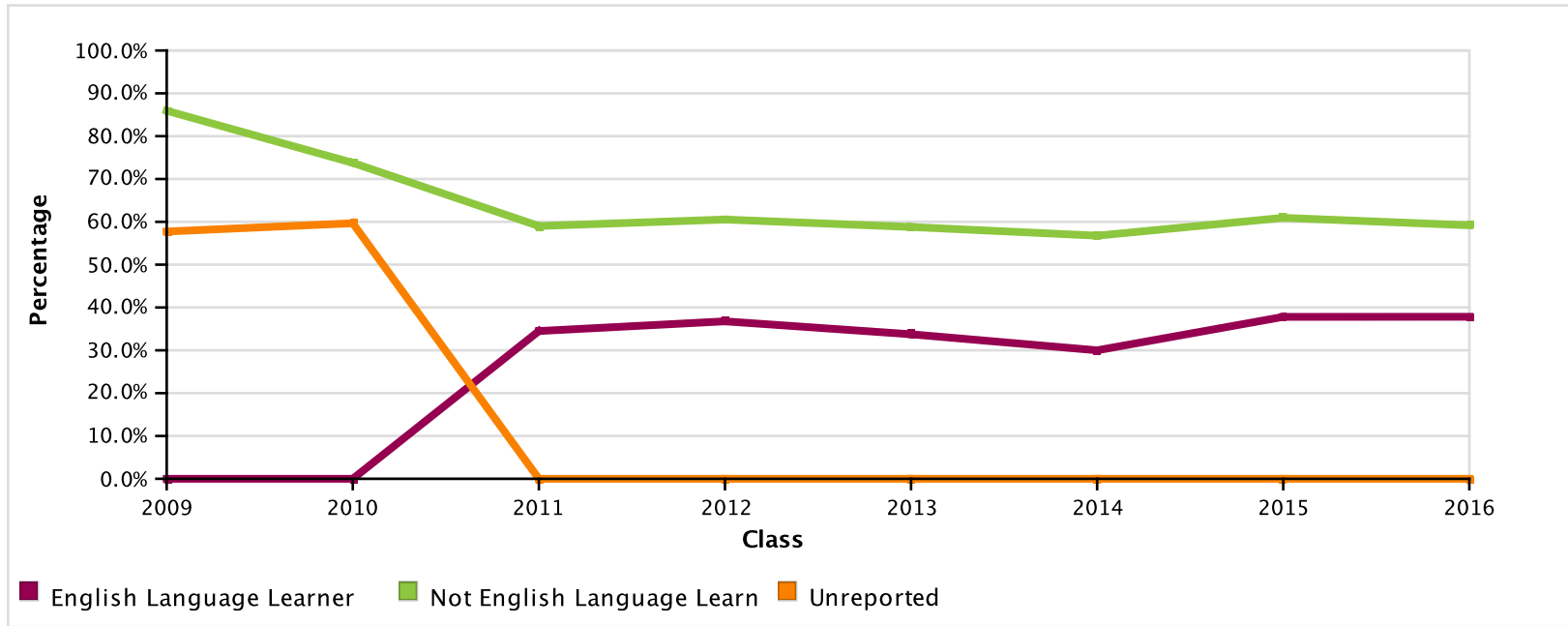
Page 12 of 31

**NATIONAL STUDENT  
CLEARINGHOUSE**

©2012 National Student Clearinghouse. All rights reserved

# StudentTracker Demographics Report

Enrollment Any Time During the First Year After High School by English Language Learner  
Effective as of : April 6, 2017



	2009	2010	2011	2012	2013	2014	2015	2016
Total Number of Students in Class	6452	7047	7209	7208	7695	7350	7424	7461

<b>English Language Learner</b>	# of students in cohort	0	1	855	797	803	740	1,058	1,126
	# of students meeting outcome	*	*	295	293	271	222	400	426
	% of students meeting outcome	*	*	34.5%	36.8%	33.7%	30.0%	37.8%	37.8%
<b>Not English Language Learner</b>	# of students in cohort	64	61	6,354	6,411	6,892	6,610	6,366	6,335
	# of students meeting outcome	55	45	3,750	3,881	4,052	3,752	3,879	3,750
	% of students meeting outcome	85.9%	73.8%	59.0%	60.5%	58.8%	56.8%	60.9%	59.2%
<b>Unreported</b>	# of students in cohort	6,388	6,985	0	0	0	0	0	0
	# of students meeting outcome	3,688	4,168	*	*	*	*	*	*
	% of students meeting outcome	57.7%	59.7%	*	*	*	*	*	*

\* To protect student privacy, small cell values have been masked for subgroups containing fewer than 10 students; these are represented with a star (\*). Because of this, the corresponding point on the graph should be disregarded. Also, if the total number of students in all subgroups for a class is less than 10, then the entire class is suppressed.

DALLAS INDEPENDENT SCHOOL DISTRICT

Report Run Date: 04/11/2017 08:48 PM

Page 13 of 31

NATIONAL STUDENT  
CLEARINGHOUSE

©2012 National Student Clearinghouse. All rights reserved

# StudentTracker Demographics Report

Enrollment Any Time During the First Two Years After High School by Gender  
Effective as of : April 6, 2017



	2009	2010	2011	2012	2013	2014	2015	2016
Total Number of Students in Class	6452	7047	7209	7208	7695	7350	7424	7461

<b>Female</b>	# of students in cohort	54	51	3,771	3,752	3,980	3,874	3,900	3,950
	# of students meeting outcome	49	43	2,460	2,517	2,612	2,478	2,603	2,336
	% of students meeting outcome	90.7%	84.3%	65.2%	67.1%	65.6%	64.0%	66.7%	59.1%
<b>Male</b>	# of students in cohort	10	11	3,438	3,456	3,715	3,476	3,524	3,511
	# of students meeting outcome	9	8	2,011	2,077	2,120	1,932	2,009	1,840
	% of students meeting outcome	90.0%	72.7%	58.5%	60.1%	57.1%	55.6%	57.0%	52.4%
<b>Unreported</b>	# of students in cohort	6,388	6,985	0	0	0	0	0	0
	# of students meeting outcome	4,096	4,551	*	*	*	*	*	*
	% of students meeting outcome	64.1%	65.2%	*	*	*	*	*	*

\* To protect student privacy, small cell values have been masked for subgroups containing fewer than 10 students; these are represented with a star (\*). Because of this, the corresponding point on the graph should be disregarded. Also, if the total number of students in all subgroups for a class is less than 10, then the entire class is suppressed.

DALLAS INDEPENDENT SCHOOL DISTRICT

Report Run Date: 04/11/2017 08:48 PM

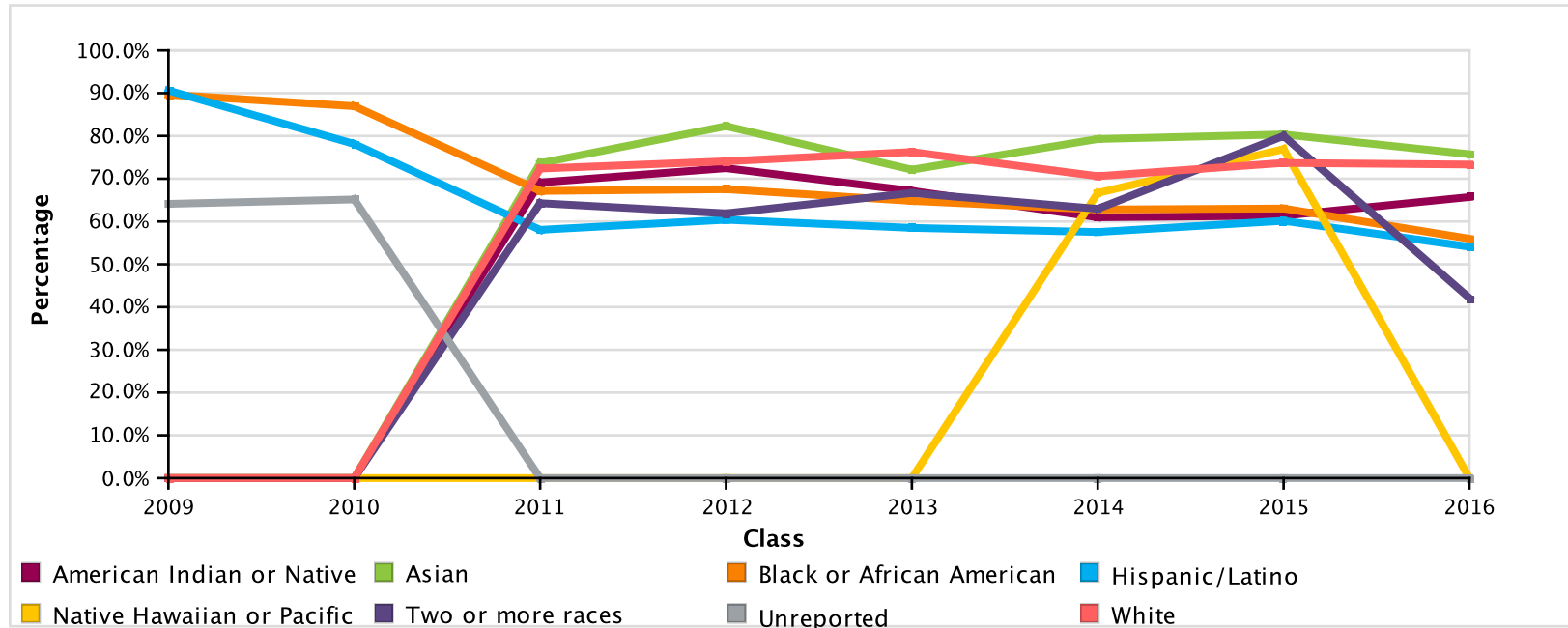
Page 14 of 31

**NATIONAL STUDENT  
CLEARINGHOUSE**

©2012 National Student Clearinghouse. All rights reserved

# StudentTracker Demographics Report

Enrollment Any Time During the First Two Years After High School by Race/Ethnicity  
Effective as of : April 6, 2017



	2009	2010	2011	2012	2013	2014	2015	2016
Total Number of Students in Class	6452	7047	7209	7208	7695	7350	7424	7461

<b>American Indian or Native Alaskan</b>	# of students in cohort	0	1	68	69	67	41	44	35
	# of students meeting outcome	*	*	47	50	45	25	27	23
	% of students meeting outcome	*	*	69.1%	72.5%	67.2%	61.0%	61.4%	65.7%
<b>Asian</b>	# of students in cohort	0	1	91	96	104	111	112	136
	# of students meeting outcome	*	*	67	79	75	88	90	103
	% of students meeting outcome	*	*	73.6%	82.3%	72.1%	79.3%	80.4%	75.7%
<b>Black or African American</b>	# of students in cohort	29	23	2,170	2,043	2,060	1,879	1,845	1,681
	# of students meeting outcome	26	20	1,457	1,380	1,335	1,180	1,163	941
	% of students meeting outcome	89.7%	87.0%	67.1%	67.5%	64.8%	62.8%	63.0%	56.0%

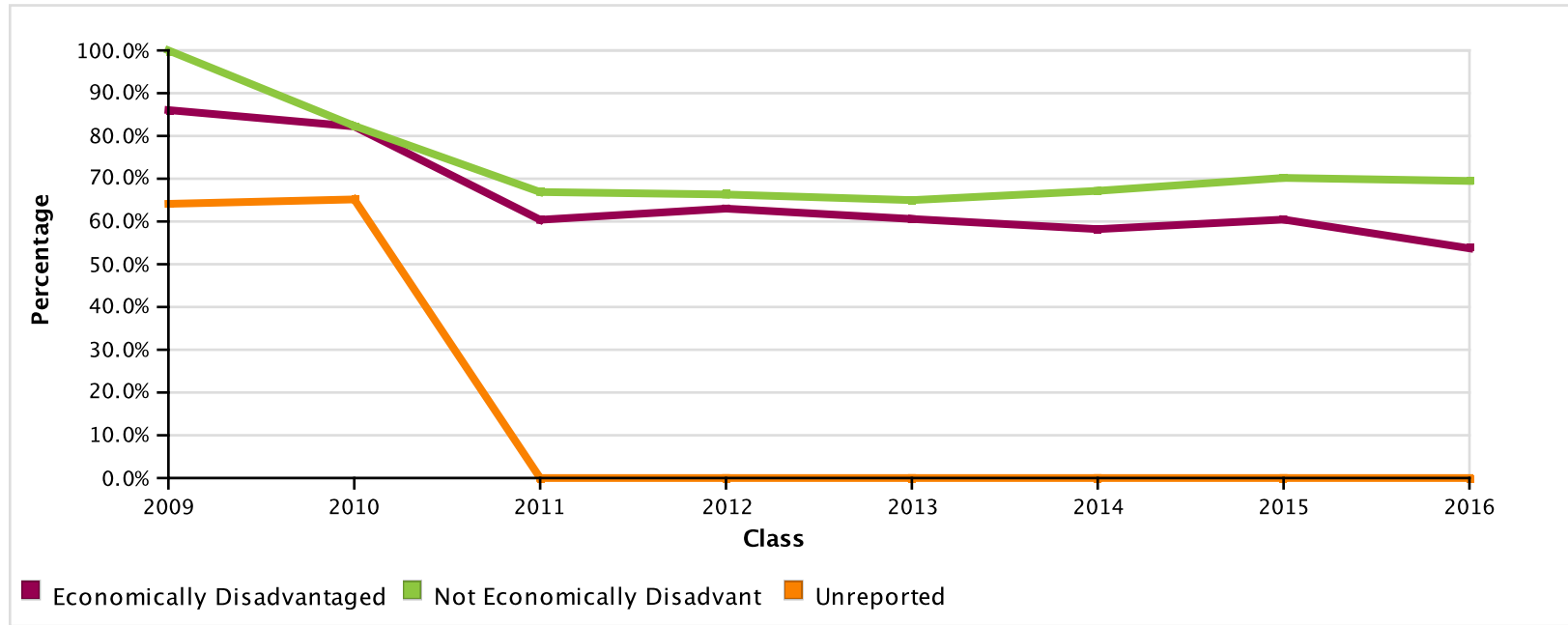
<b>Hispanic/Latino</b>	# of students in cohort	32	32	4,406	4,516	4,989	4,866	4,925	5,163
	# of students meeting outcome	29	25	2,558	2,728	2,919	2,800	2,963	2,793
	% of students meeting outcome	90.6%	78.1%	58.1%	60.4%	58.5%	57.5%	60.2%	54.1%
<b>Two or more races</b>	# of students in cohort	0	0	28	21	27	27	25	38
	# of students meeting outcome	*	*	18	13	18	17	20	16
	% of students meeting outcome	*	*	64.3%	61.9%	66.7%	63.0%	80.0%	42.1%
<b>Native Hawaiian or Pacific Islander</b>	# of students in cohort	0	0	8	4	6	18	13	7
	# of students meeting outcome	*	*	*	*	*	12	10	*
	% of students meeting outcome	*	*	*	*	*	66.7%	76.9%	*
<b>Unreported</b>	# of students in cohort	6,388	6,985	0	0	0	0	0	0
	# of students meeting outcome	4,096	4,551	*	*	*	*	*	*
	% of students meeting outcome	64.1%	65.2%	*	*	*	*	*	*
<b>White</b>	# of students in cohort	3	5	438	459	442	408	460	401
	# of students meeting outcome	*	*	317	340	337	288	339	294
	% of students meeting outcome	*	*	72.4%	74.1%	76.2%	70.6%	73.7%	73.3%

\* To protect student privacy, small cell values have been masked for subgroups containing fewer than 10 students; these are represented with a star (\*). Because of this, the corresponding point on the graph should be disregarded. Also, if the total number of students in all subgroups for a class is less than 10, then the entire class is suppressed.



# StudentTracker Demographics Report

Enrollment Any Time During the First Two Years After High School by Economic Disadvantage  
Effective as of : April 6, 2017



	2009	2010	2011	2012	2013	2014	2015	2016
Total Number of Students in Class	6452	7047	7209	7208	7695	7350	7424	7461

<b>Economically Disadvantaged</b>	# of students in cohort	43	45	5,406	5,620	6,104	5,879	6,146	6,393
	# of students meeting outcome	37	37	3,265	3,541	3,698	3,422	3,715	3,434
	% of students meeting outcome	86.0%	82.2%	60.4%	63.0%	60.6%	58.2%	60.4%	53.7%
<b>Not Economically Disadvantaged</b>	# of students in cohort	21	17	1,803	1,588	1,591	1,471	1,278	1,068
	# of students meeting outcome	21	14	1,206	1,053	1,034	988	897	742
	% of students meeting outcome	100.0%	82.4%	66.9%	66.3%	65.0%	67.2%	70.2%	69.5%
<b>Unreported</b>	# of students in cohort	6,388	6,985	0	0	0	0	0	0
	# of students meeting outcome	4,096	4,551	*	*	*	*	*	*
	% of students meeting outcome	64.1%	65.2%	*	*	*	*	*	*

\* To protect student privacy, small cell values have been masked for subgroups containing fewer than 10 students; these are represented with a star (\*). Because of this, the corresponding point on the graph should be disregarded. Also, if the total number of students in all subgroups for a class is less than 10, then the entire class is suppressed.

DALLAS INDEPENDENT SCHOOL DISTRICT

Report Run Date: 04/11/2017 08:48 PM

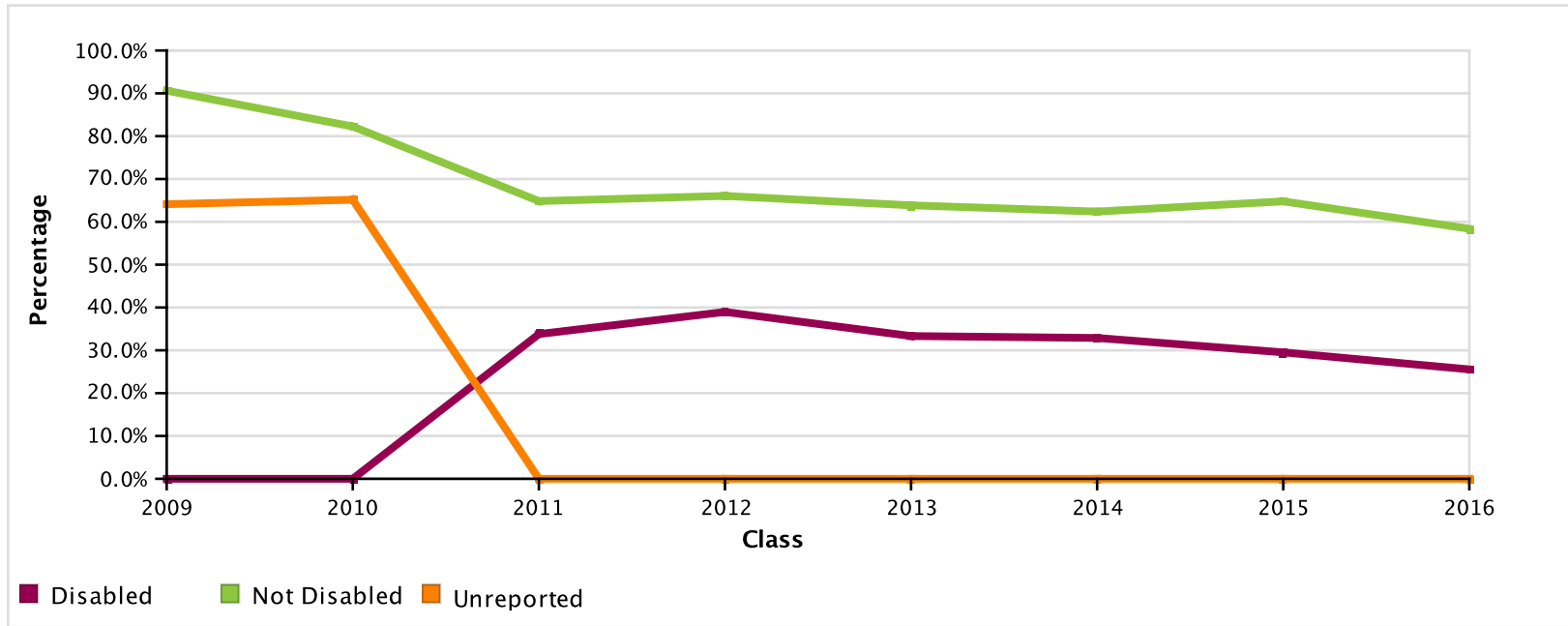
Page 17 of 31

NATIONAL STUDENT  
CLEARINGHOUSE

©2012 National Student Clearinghouse. All rights reserved

# StudentTracker Demographics Report

Enrollment Any Time During the First Two Years After High School by Disability  
Effective as of : April 6, 2017



	2009	2010	2011	2012	2013	2014	2015	2016
Total Number of Students in Class	6452	7047	7209	7208	7695	7350	7424	7461

<b>Disabled</b>	# of students in cohort	0	0	654	616	594	596	559	548
	# of students meeting outcome	*	*	221	240	198	196	165	140
	% of students meeting outcome	*	*	33.8%	39.0%	33.3%	32.9%	29.5%	25.5%
<b>Not Disabled</b>	# of students in cohort	64	62	6,555	6,592	7,101	6,754	6,865	6,913
	# of students meeting outcome	58	51	4,250	4,354	4,534	4,214	4,447	4,036
	% of students meeting outcome	90.6%	82.3%	64.8%	66.0%	63.9%	62.4%	64.8%	58.4%
<b>Unreported</b>	# of students in cohort	6,388	6,985	0	0	0	0	0	0
	# of students meeting outcome	4,096	4,551	*	*	*	*	*	*
	% of students meeting outcome	64.1%	65.2%	*	*	*	*	*	*

\* To protect student privacy, small cell values have been masked for subgroups containing fewer than 10 students; these are represented with a star (\*). Because of this, the corresponding point on the graph should be disregarded. Also, if the total number of students in all subgroups for a class is less than 10, then the entire class is suppressed.

DALLAS INDEPENDENT SCHOOL DISTRICT

Report Run Date: 04/11/2017 08:48 PM

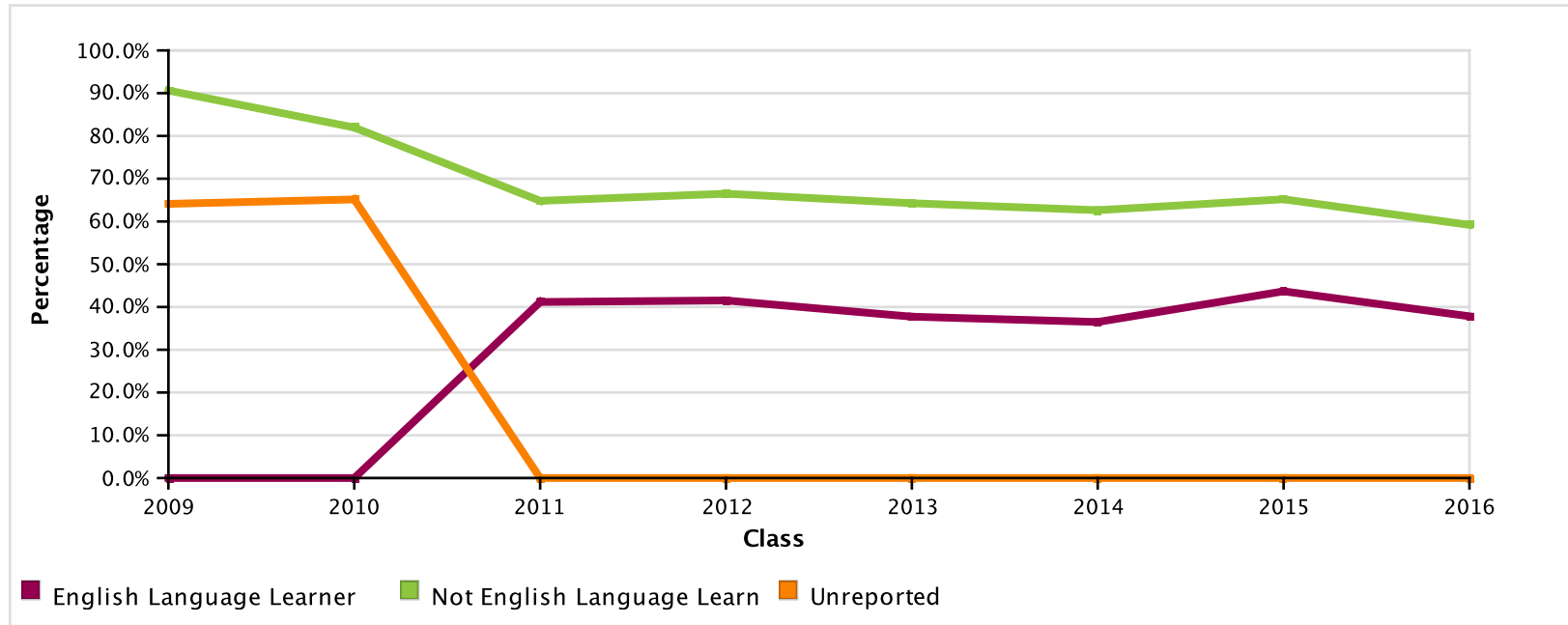
Page 18 of 31

**NATIONAL STUDENT  
CLEARINGHOUSE**

©2012 National Student Clearinghouse. All rights reserved

# StudentTracker Demographics Report

Enrollment Any Time During the First Two Years After High School by English Language Learner  
Effective as of : April 6, 2017



	2009	2010	2011	2012	2013	2014	2015	2016
Total Number of Students in Class	6452	7047	7209	7208	7695	7350	7424	7461

<b>English Language Learner</b>	# of students in cohort	0	1	855	797	803	740	1,058	1,126
	# of students meeting outcome	*	*	352	331	303	270	462	426
	% of students meeting outcome	*	*	41.2%	41.5%	37.7%	36.5%	43.7%	37.8%
<b>Not English Language Learner</b>	# of students in cohort	64	61	6,354	6,411	6,892	6,610	6,366	6,335
	# of students meeting outcome	58	50	4,119	4,263	4,429	4,140	4,150	3,750
	% of students meeting outcome	90.6%	82.0%	64.8%	66.5%	64.3%	62.6%	65.2%	59.2%
<b>Unreported</b>	# of students in cohort	6,388	6,985	0	0	0	0	0	0
	# of students meeting outcome	4,096	4,551	*	*	*	*	*	*
	% of students meeting outcome	64.1%	65.2%	*	*	*	*	*	*

\* To protect student privacy, small cell values have been masked for subgroups containing fewer than 10 students; these are represented with a star (\*). Because of this, the corresponding point on the graph should be disregarded. Also, if the total number of students in all subgroups for a class is less than 10, then the entire class is suppressed.

DALLAS INDEPENDENT SCHOOL DISTRICT

Report Run Date: 04/11/2017 08:48 PM

Page 19 of 31

NATIONAL STUDENT  
CLEARINGHOUSE

©2012 National Student Clearinghouse. All rights reserved

# StudentTracker Demographics Report

Enrollment during First Year After High School Who Returned for a Second Year by Gender  
Effective as of : April 6, 2017



	2009	2010	2011	2012	2013	2014
Number of Students Enrolled 1st Year	3743	4214	4045	4174	4323	3974

<b>Female</b>	# of students in cohort	48	38	2,259	2,288	2,410	2,271
	# of students meeting outcome	46	32	1,799	1,781	1,863	1,829
	% of students meeting outcome	95.8%	84.2%	79.6%	77.8%	77.3%	80.5%
<b>Male</b>	# of students in cohort	7	8	1,786	1,886	1,913	1,703
	# of students meeting outcome	*	*	1,317	1,388	1,316	1,246
	% of students meeting outcome	*	*	73.7%	73.6%	68.8%	73.2%
<b>Unreported</b>	# of students in cohort	3,688	4,168	0	0	0	0
	# of students meeting outcome	2,928	3,151	*	*	*	*
	% of students meeting outcome	79.4%	75.6%	*	*	*	*

\* To protect student privacy, small cell values have been masked for subgroups containing fewer than 10 students; these are represented with a star (\*). Because of this, the corresponding point on the graph should be disregarded. Also, if the total number of students in all subgroups for a class is less than 10, then the entire class is suppressed.

DALLAS INDEPENDENT SCHOOL DISTRICT

Report Run Date: 04/11/2017 08:48 PM

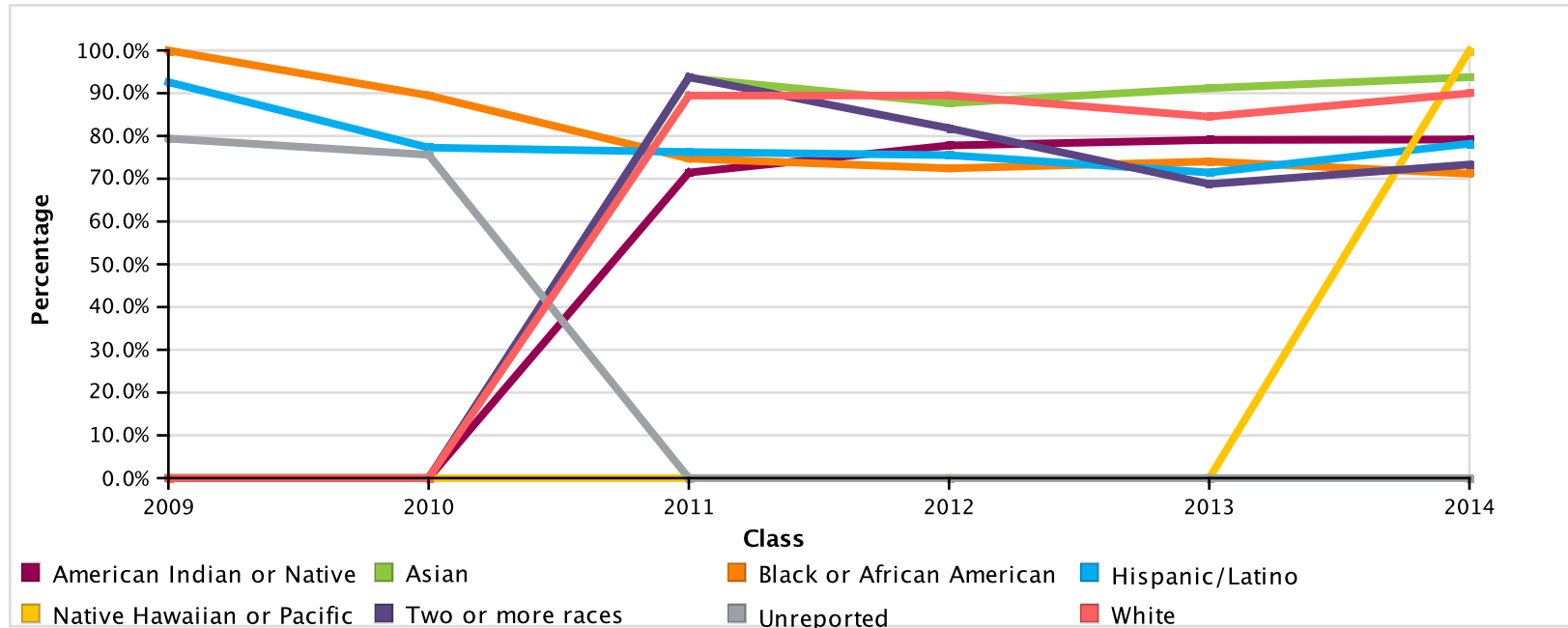
Page 20 of 31

NATIONAL STUDENT  
CLEARINGHOUSE

©2012 National Student Clearinghouse. All rights reserved

# StudentTracker Demographics Report

Enrollment during First Year After High School Who Returned for a Second Year by Race/Ethnicity  
Effective as of : April 6, 2017



	2009	2010	2011	2012	2013	2014
Number of Students Enrolled 1st Year	3743	4214	4045	4174	4323	3974

<b>American Indian or Native Alaskan</b>	# of students in cohort	0	0	42	45	43	24
	# of students meeting outcome	*	*	30	35	34	19
	% of students meeting outcome	*	*	71.4%	77.8%	79.1%	79.2%
<b>Asian</b>	# of students in cohort	0	1	62	73	68	80
	# of students meeting outcome	*	*	58	64	62	75
	% of students meeting outcome	*	*	93.5%	87.7%	91.2%	93.8%
<b>Black or African American</b>	# of students in cohort	26	19	1,329	1,284	1,205	1,121
	# of students meeting outcome	26	17	993	930	892	798
	% of students meeting outcome	100.0%	89.5%	74.7%	72.4%	74.0%	71.2%

DALLAS INDEPENDENT SCHOOL DISTRICT

Report Run Date: 04/11/2017 08:48 PM

Page 21 of 31

NATIONAL STUDENT  
CLEARINGHOUSE

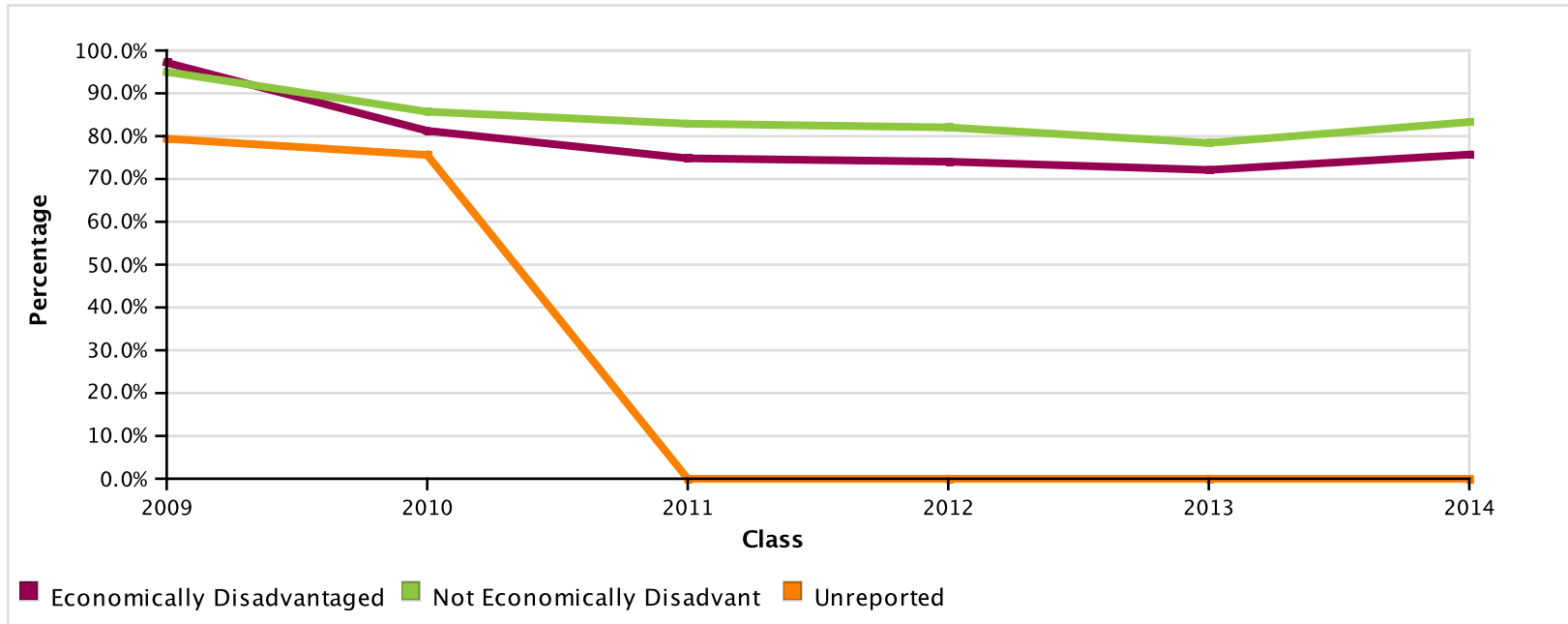
©2012 National Student Clearinghouse. All rights reserved

<b>Hispanic/Latino</b>	# of students in cohort	27	22	2,286	2,434	2,665	2,454
	# of students meeting outcome	25	17	1,743	1,838	1,904	1,919
	% of students meeting outcome	92.6%	77.3%	76.2%	75.5%	71.4%	78.2%
<b>Two or more races</b>	# of students in cohort	0	0	16	11	16	15
	# of students meeting outcome	*	*	15	9	11	11
	% of students meeting outcome	*	*	93.8%	81.8%	68.8%	73.3%
<b>Native Hawaiian or Pacific Islander</b>	# of students in cohort	0	0	7	4	3	11
	# of students meeting outcome	*	*	*	*	*	11
	% of students meeting outcome	*	*	*	*	*	100.0%
<b>Unreported</b>	# of students in cohort	3,688	4,168	0	0	0	0
	# of students meeting outcome	2,928	3,151	*	*	*	*
	% of students meeting outcome	79.4%	75.6%	*	*	*	*
<b>White</b>	# of students in cohort	2	4	303	323	323	269
	# of students meeting outcome	*	*	271	289	273	242
	% of students meeting outcome	*	*	89.4%	89.5%	84.5%	90.0%

\* To protect student privacy, small cell values have been masked for subgroups containing fewer than 10 students; these are represented with a star (\*). Because of this, the corresponding point on the graph should be disregarded. Also, if the total number of students in all subgroups for a class is less than 10, then the entire class is suppressed.

# StudentTracker Demographics Report

Enrollment during First Year After High School Who Returned for a Second Year by Economic Disadvantage  
Effective as of : April 6, 2017



	2009	2010	2011	2012	2013	2014
Number of Students Enrolled 1st Year	3743	4214	4045	4174	4323	3974

<b>Economically Disadvantaged</b>	# of students in cohort	35	32	2,939	3,194	3,346	3,094
	# of students meeting outcome	34	26	2,199	2,365	2,413	2,342
	% of students meeting outcome	97.1%	81.2%	74.8%	74.0%	72.1%	75.7%
<b>Not Economically Disadvantaged</b>	# of students in cohort	20	14	1,106	980	977	880
	# of students meeting outcome	19	12	917	804	766	733
	% of students meeting outcome	95.0%	85.7%	82.9%	82.0%	78.4%	83.3%
<b>Unreported</b>	# of students in cohort	3,688	4,168	0	0	0	0
	# of students meeting outcome	2,928	3,151	*	*	*	*
	% of students meeting outcome	79.4%	75.6%	*	*	*	*

\* To protect student privacy, small cell values have been masked for subgroups containing fewer than 10 students; these are represented with a star (\*). Because of this, the corresponding point on the graph should be disregarded. Also, if the total number of students in all subgroups for a class is less than 10, then the entire class is suppressed.

DALLAS INDEPENDENT SCHOOL DISTRICT

Report Run Date: 04/11/2017 08:48 PM

Page 23 of 31

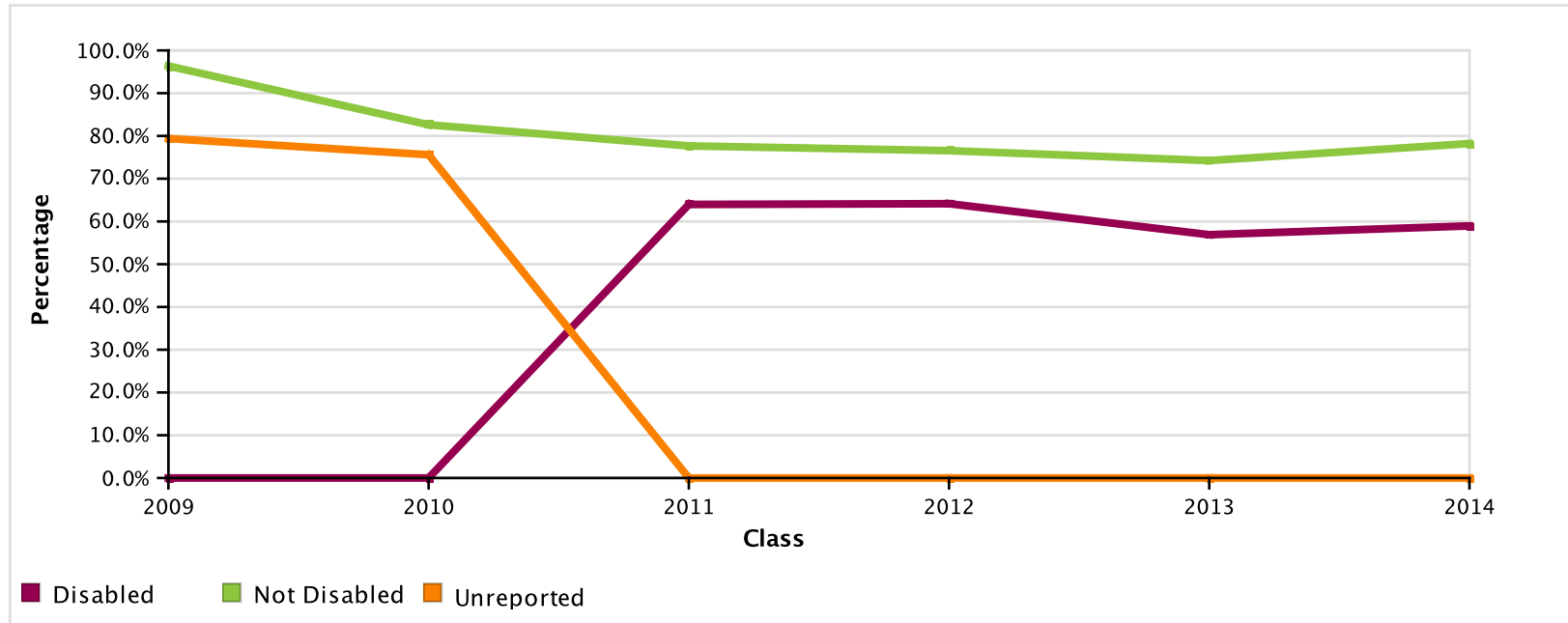
NATIONAL STUDENT  
CLEARINGHOUSE

©2012 National Student Clearinghouse. All rights reserved

# StudentTracker Demographics Report

## Enrollment during First Year After High School Who Returned for a Second Year by Disability

Effective as of : April 6, 2017



	2009	2010	2011	2012	2013	2014
Number of Students Enrolled 1st Year	3743	4214	4045	4174	4323	3974

<b>Disabled</b>	# of students in cohort	0	0	186	212	174	173
	# of students meeting outcome	*	*	119	136	99	102
	% of students meeting outcome	*	*	64.0%	64.2%	56.9%	59.0%
<b>Not Disabled</b>	# of students in cohort	55	46	3,859	3,962	4,149	3,801
	# of students meeting outcome	53	38	2,997	3,033	3,080	2,973
	% of students meeting outcome	96.4%	82.6%	77.7%	76.6%	74.2%	78.2%
<b>Unreported</b>	# of students in cohort	3,688	4,168	0	0	0	0
	# of students meeting outcome	2,928	3,151	*	*	*	*
	% of students meeting outcome	79.4%	75.6%	*	*	*	*

\* To protect student privacy, small cell values have been masked for subgroups containing fewer than 10 students; these are represented with a star (\*). Because of this, the corresponding point on the graph should be disregarded. Also, if the total number of students in all subgroups for a class is less than 10, then the entire class is suppressed.

DALLAS INDEPENDENT SCHOOL DISTRICT

Report Run Date: 04/11/2017 08:48 PM

Page 24 of 31

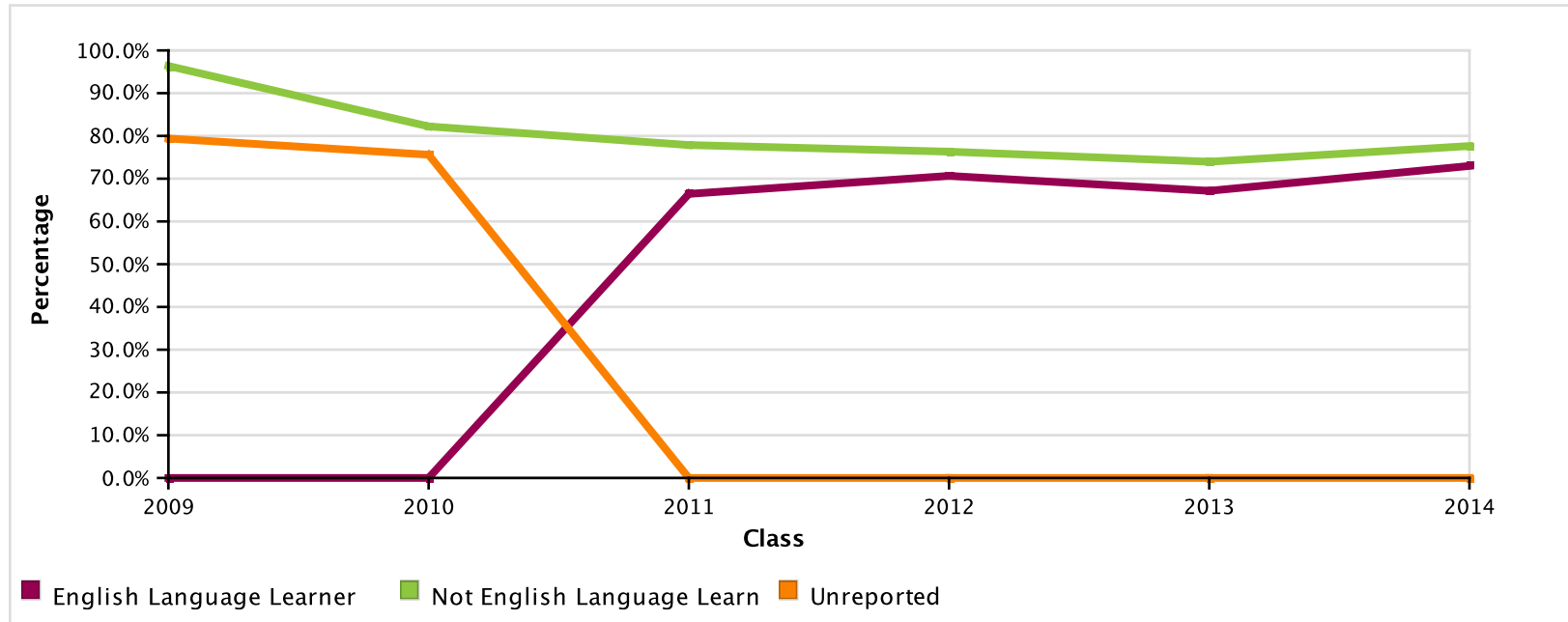
**NATIONAL STUDENT  
CLEARINGHOUSE**

©2012 National Student Clearinghouse. All rights reserved



# StudentTracker Demographics Report

Enrollment during First Year After High School Who Returned for a Second Year by English Language Learner  
Effective as of : April 6, 2017



	2009	2010	2011	2012	2013	2014
Number of Students Enrolled 1st Year	3743	4214	4045	4174	4323	3974

<b>English Language Learner</b>	# of students in cohort	0	1	295	293	271	222
	# of students meeting outcome	*	*	196	207	182	162
	% of students meeting outcome	*	*	66.4%	70.6%	67.2%	73.0%
<b>Not English Language Learner</b>	# of students in cohort	55	45	3,750	3,881	4,052	3,752
	# of students meeting outcome	53	37	2,920	2,962	2,997	2,913
	% of students meeting outcome	96.4%	82.2%	77.9%	76.3%	74.0%	77.6%
<b>Unreported</b>	# of students in cohort	3,688	4,168	0	0	0	0
	# of students meeting outcome	2,928	3,151	*	*	*	*
	% of students meeting outcome	79.4%	75.6%	*	*	*	*

\* To protect student privacy, small cell values have been masked for subgroups containing fewer than 10 students; these are represented with a star (\*). Because of this, the corresponding point on the graph should be disregarded. Also, if the total number of students in all subgroups for a class is less than 10, then the entire class is suppressed.

DALLAS INDEPENDENT SCHOOL DISTRICT

Report Run Date: 04/11/2017 08:48 PM

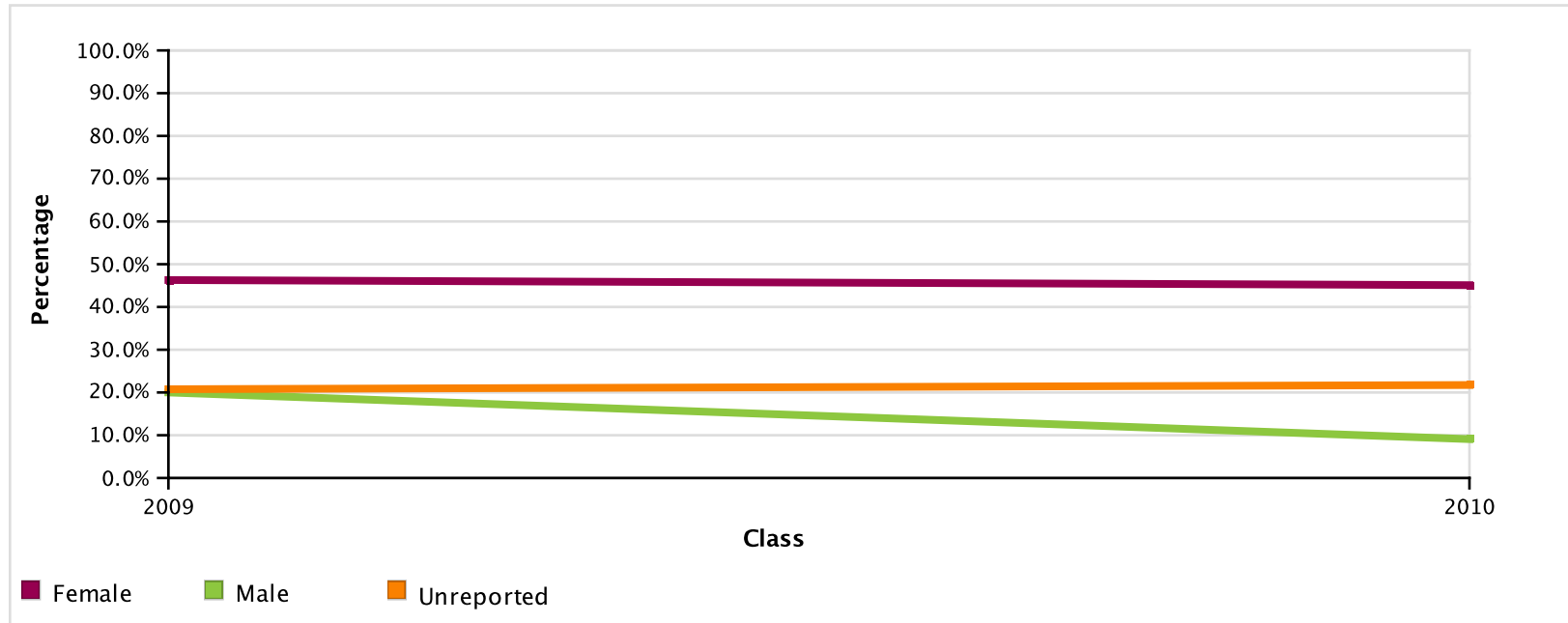
Page 25 of 31

NATIONAL STUDENT  
CLEARINGHOUSE

©2012 National Student Clearinghouse. All rights reserved

# StudentTracker Demographics Report

Students Who Have Completed a Degree Within Six Years by Gender  
Effective as of : April 6, 2017



	2009	2010
Total Number of Students in Class	6452	7047

<b>Female</b>	# of students in cohort	54	51
	# of students meeting outcome	25	23
	% of students meeting outcome	46.3%	45.1%
<b>Male</b>	# of students in cohort	10	11
	# of students meeting outcome	2	1
	% of students meeting outcome	20.0%	9.1%
<b>Unreported</b>	# of students in cohort	6,388	6,985
	# of students meeting outcome	1,326	1,519
	% of students meeting outcome	20.8%	21.7%

\* To protect student privacy, small cell values have been masked for subgroups containing fewer than 10 students; these are represented with a star (\*). Because of this, the corresponding point on the graph should be disregarded. Also, if the total number of students in all subgroups for a class is less than 10, then the entire class is suppressed.

DALLAS INDEPENDENT SCHOOL DISTRICT

Report Run Date: 04/11/2017 08:48 PM

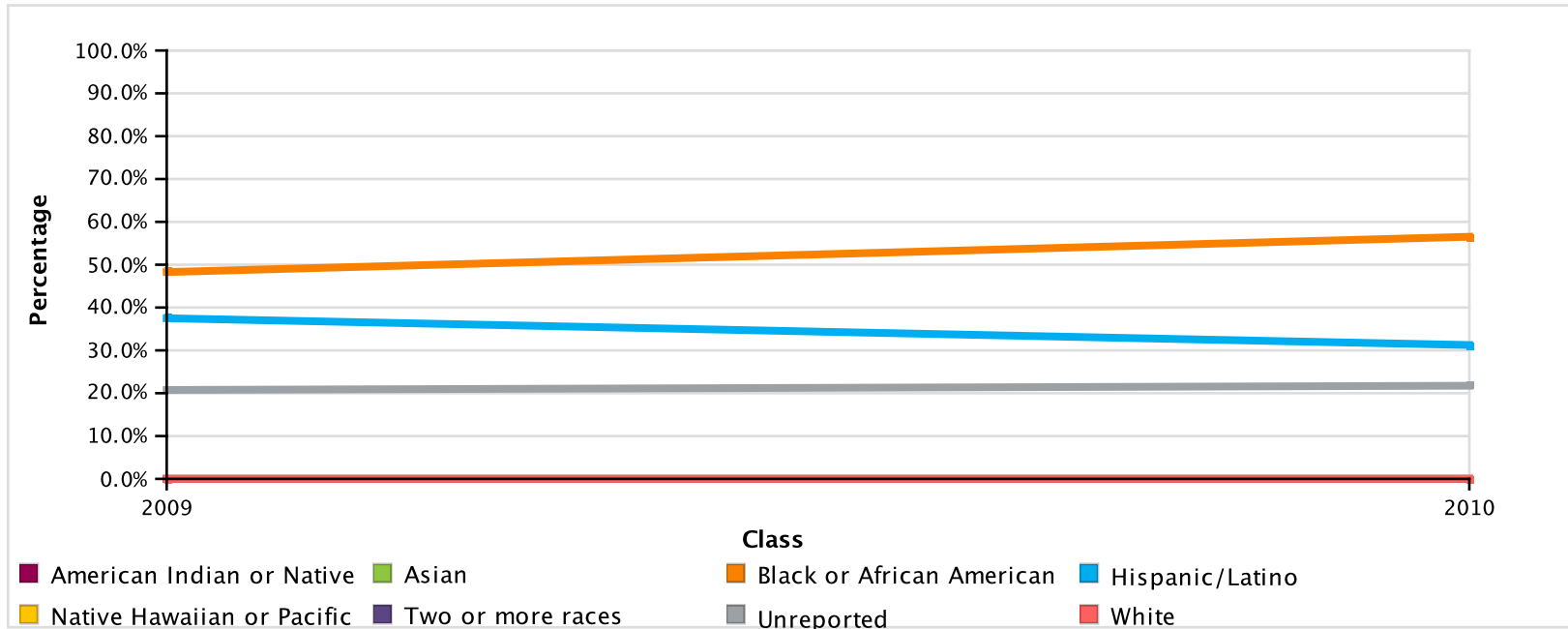
Page 26 of 31

**NATIONAL STUDENT  
CLEARINGHOUSE**

©2012 National Student Clearinghouse. All rights reserved

# StudentTracker Demographics Report

Students Who Have Completed a Degree Within Six Years by Race/Ethnicity  
Effective as of : April 6, 2017



	2009	2010
Total Number of Students in Class	6452	7047

Race/Ethnicity	Metric	2009	2010
American Indian or Native Alaskan	# of students in cohort	0	1
	# of students meeting outcome	*	*
	% of students meeting outcome	*	*
Asian	# of students in cohort	0	1
	# of students meeting outcome	*	*
	% of students meeting outcome	*	*
Black or African American	# of students in cohort	29	23
	# of students meeting outcome	14	13
	% of students meeting outcome	48.3%	56.5%

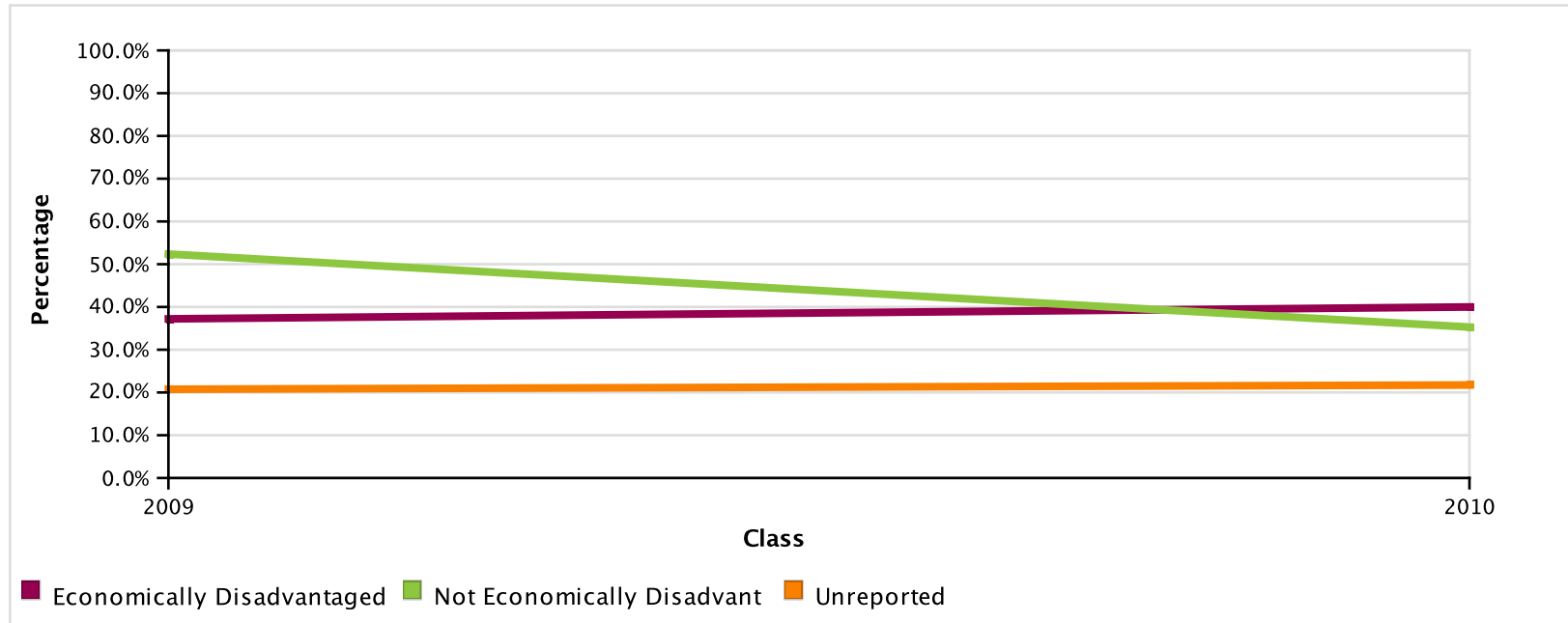
<b>Hispanic/Latino</b>	# of students in cohort	32	32
	# of students meeting outcome	12	10
	% of students meeting outcome	37.5%	31.2%
<b>Two or more races</b>	# of students in cohort	0	0
	# of students meeting outcome	*	*
	% of students meeting outcome	*	*
<b>Native Hawaiian or Pacific Islander</b>	# of students in cohort	0	0
	# of students meeting outcome	*	*
	% of students meeting outcome	*	*
<b>Unreported</b>	# of students in cohort	6,388	6,985
	# of students meeting outcome	1,326	1,519
	% of students meeting outcome	20.8%	21.7%
<b>White</b>	# of students in cohort	3	5
	# of students meeting outcome	*	*
	% of students meeting outcome	*	*

\* To protect student privacy, small cell values have been masked for subgroups containing fewer than 10 students; these are represented with a star (\*). Because of this, the corresponding point on the graph should be disregarded. Also, if the total number of students in all subgroups for a class is less than 10, then the entire class is suppressed.

# StudentTracker Demographics Report

## Students Who Have Completed a Degree Within Six Years by Economic Disadvantage

Effective as of : April 6, 2017



	2009	2010
Total Number of Students in Class	6452	7047

<b>Economically Disadvantaged</b>	# of students in cohort	43	45
	# of students meeting outcome	16	18
	% of students meeting outcome	37.2%	40.0%
<b>Not Economically Disadvantaged</b>	# of students in cohort	21	17
	# of students meeting outcome	11	6
	% of students meeting outcome	52.4%	35.3%
<b>Unreported</b>	# of students in cohort	6,388	6,985
	# of students meeting outcome	1,326	1,519
	% of students meeting outcome	20.8%	21.7%

\* To protect student privacy, small cell values have been masked for subgroups containing fewer than 10 students; these are represented with a star (\*). Because of this, the corresponding point on the graph should be disregarded. Also, if the total number of students in all subgroups for a class is less than 10, then the entire class is suppressed.

DALLAS INDEPENDENT SCHOOL DISTRICT

Report Run Date: 04/11/2017 08:48 PM

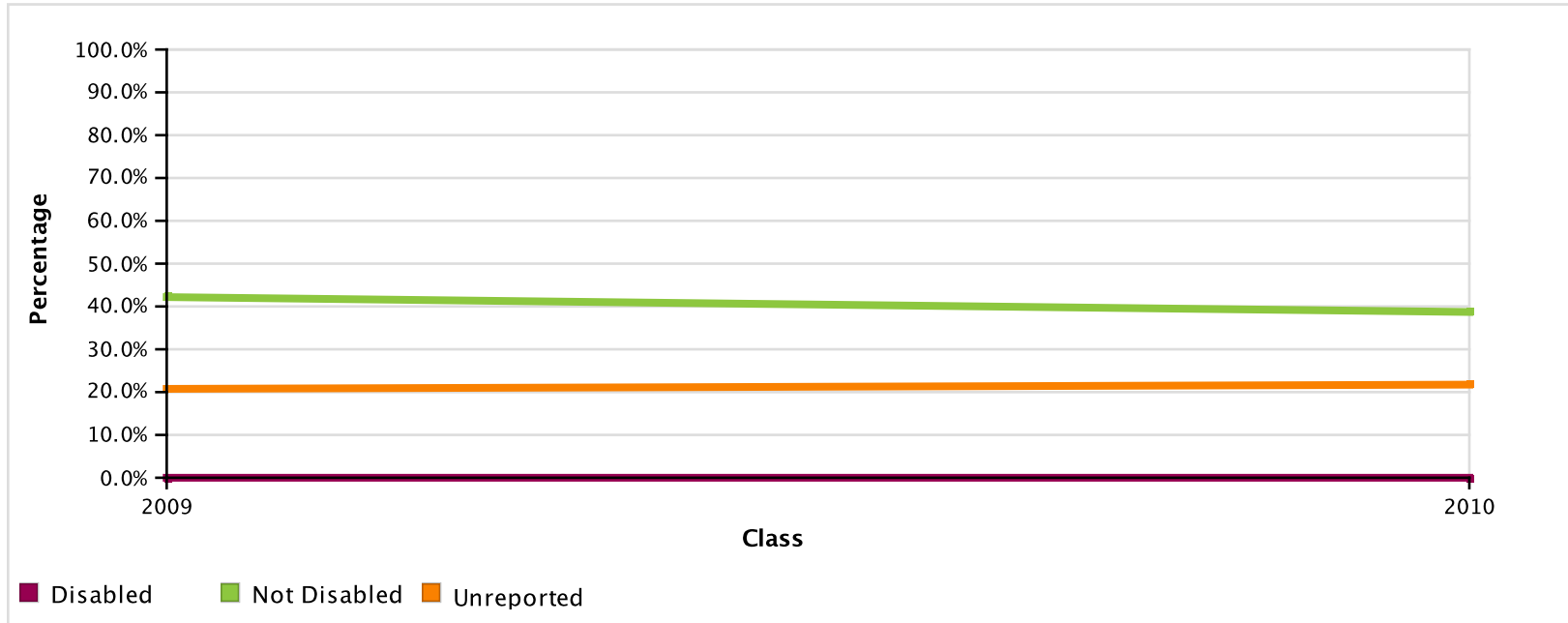
Page 29 of 31

**NATIONAL STUDENT  
CLEARINGHOUSE**

©2012 National Student Clearinghouse. All rights reserved

# StudentTracker Demographics Report

Students Who Have Completed a Degree Within Six Years by Disability  
Effective as of : April 6, 2017



	2009	2010
Total Number of Students in Class	6452	7047

<b>Disabled</b>	# of students in cohort	0	0
	# of students meeting outcome	*	*
	% of students meeting outcome	*	*
<b>Not Disabled</b>	# of students in cohort	64	62
	# of students meeting outcome	27	24
	% of students meeting outcome	42.2%	38.7%
<b>Unreported</b>	# of students in cohort	6,388	6,985
	# of students meeting outcome	1,326	1,519
	% of students meeting outcome	20.8%	21.7%

\* To protect student privacy, small cell values have been masked for subgroups containing fewer than 10 students; these are represented with a star (\*). Because of this, the corresponding point on the graph should be disregarded. Also, if the total number of students in all subgroups for a class is less than 10, then the entire class is suppressed.

DALLAS INDEPENDENT SCHOOL DISTRICT

Report Run Date: 04/11/2017 08:48 PM

Page 30 of 31

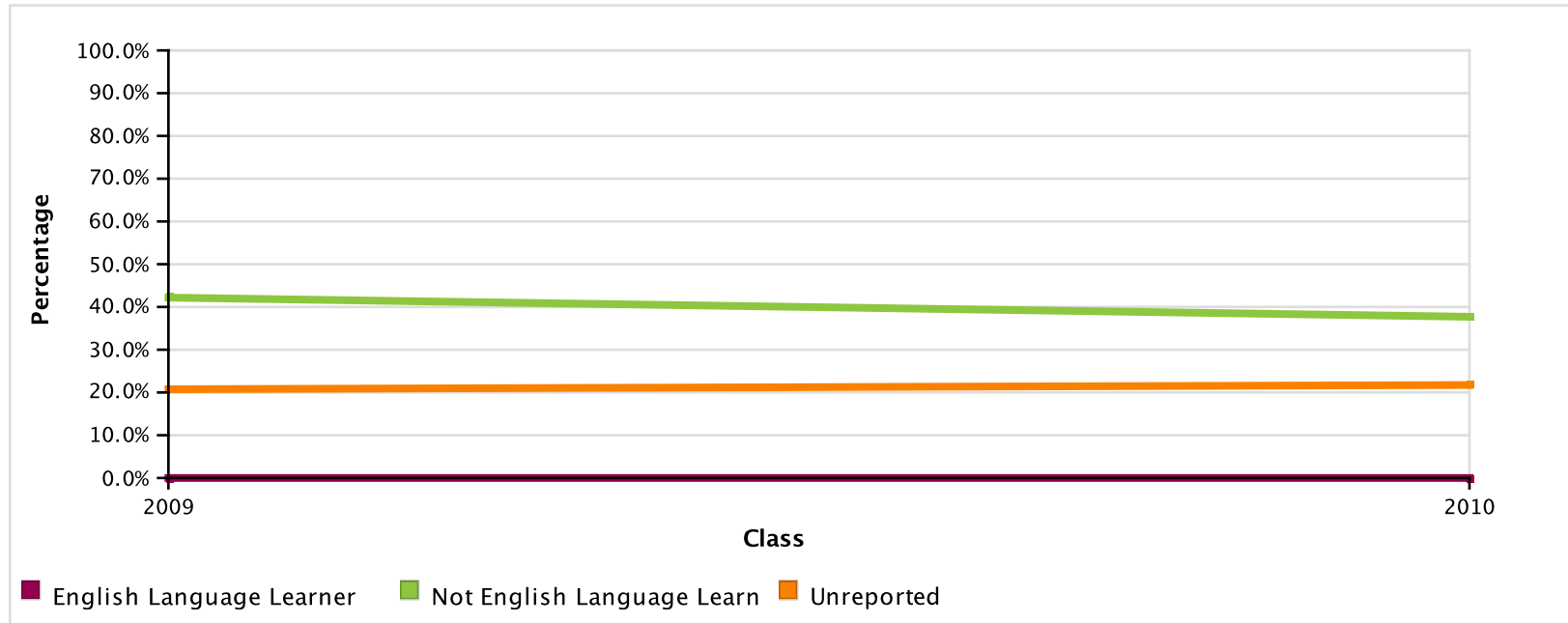
**NATIONAL STUDENT  
CLEARINGHOUSE**

©2012 National Student Clearinghouse. All rights reserved

# StudentTracker Demographics Report

## Students Who Have Completed a Degree Within Six Years by English Language Learner

Effective as of : April 6, 2017



	2009	2010
Total Number of Students in Class	6452	7047

<b>English Language Learner</b>	# of students in cohort	0	1
	# of students meeting outcome	*	*
	% of students meeting outcome	*	*
<b>Not English Language Learner</b>	# of students in cohort	64	61
	# of students meeting outcome	27	23
	% of students meeting outcome	42.2%	37.7%
<b>Unreported</b>	# of students in cohort	6,388	6,985
	# of students meeting outcome	1,326	1,519
	% of students meeting outcome	20.8%	21.7%

\* To protect student privacy, small cell values have been masked for subgroups containing fewer than 10 students; these are represented with a star (\*). Because of this, the corresponding point on the graph should be disregarded. Also, if the total number of students in all subgroups for a class is less than 10, then the entire class is suppressed.

DALLAS INDEPENDENT SCHOOL DISTRICT

Report Run Date: 04/11/2017 08:48 PM

Page 31 of 31

**NATIONAL STUDENT  
CLEARINGHOUSE**

©2012 National Student Clearinghouse. All rights reserved