

DATA PACKET

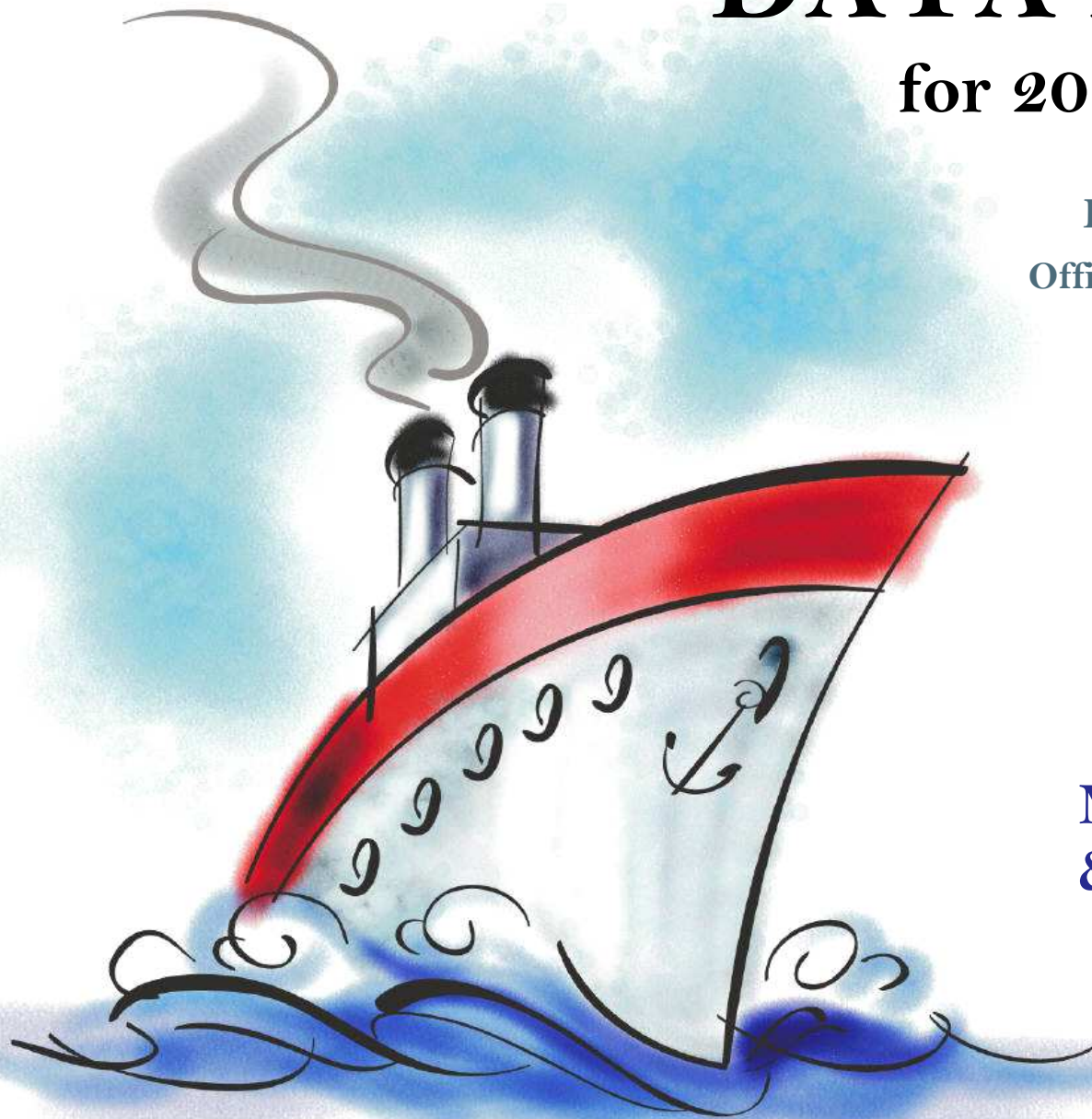
for 2014-15 planning

Evaluation & Assessment
Office of Institutional Research
<http://mydata.dallasisd.org>
OIR@dallasisd.org

August 1, 2014

School Number 830

**J.P. STARKS
MATH, SCIENCE,
& TECHNOLOGY
VANGUARD**



Dallas Independent School District

2. Contents Table of Contents

STUDENTS AND STAFF

5. Summary Summary of Student and Teacher Statistics

7. Enroll (2) Enrollment Statistics by Select Student Group

STAAR (English)

9. Reading (3-8) STAAR 3-8 Reading in English

17. Math (3-8) STAAR 3-8 Mathematics in English

ENGLISH PROFICIENCY

25. TELPAS Texas English Language Proficiency Assessment System

LOCAL ASSESSMENT

26. ACP Assessments of Course Performance

3. Notes Notes and Data Descriptions

6. Enroll (1) Enrollment Statistics by Ethnicity

8. Attendance Student Attendance Statistics

13. Writing (3-8) STAAR 3-8 Writing in English

21. Science (3-8) STAAR 3-8 Science in English

2013-14 SCHOOL SUMMARY

- Student percentages are computed as the percentage of total student enrollment.
- Additional statistics are available in ENROLLMENT and TEACHER reports.
- Race/ethnic categories are based on the newest federal standards for ethnicity and race reporting, though some categories have been combined because of small group sizes. Students reporting their ethnicity as “Hispanic” are not counted in any race category.
- “Economically disadvantaged” students are those who qualify for free or reduced-price lunch through the federal government's program.
- MAGNET PROGRAMS: Teacher statistics are not available for magnets, academies, or vanguards. See statistics for the whole campus.

ENROLLMENT

- Statistics are based on the school's enrollment at the end of the fifth six-weeks grading period.
- “Economically disadvantaged” students are those receiving free or reduced-price lunches.
- “New” students were new to the district in 2013-14. They are counted as new if not enrolled in a district campus before the last day of the 2012-13 school year.
- The “retention rate” is the percentage of students in the same grade at the end of the fifth six-weeks grading period for both 2012-13 and 2013-14.

ATTENDANCE

- Statistics are based on student attendance through the end of the sixth six-weeks grading period (the end of the school year).
- “Average daily membership” is the total number of school days students were ENROLLED divided by the number of school days in the year.
- The “average daily attendance” number (N) is the total number of school days students were IN ATTENDANCE divided by the number of school days in the year. The “average daily attendance” percentage (%) is the average attendance rate. For each student, the number of days attended is divided by the number of days enrolled. This rate is then averaged across students.
- The number (N) of “yearly transactions” is the total number of transfer and withdrawal transactions in the school year. The percentage (%) is the number of transactions divided by “average daily membership,” which gives (on average) the percentage of the membership associated with a transaction.
- “Continuously enrolled” students are enrolled and in attendance for a minimum number of instructional days in at least one course at the school between the beginning of the school year and the first day of the main STAAR testing period. The minimum number varies depending on the school year's calendar, but is typically around 130 days.
- The “stability rate” is the number of continuously enrolled students divided by “average daily membership.”

STAAR, STAAR L, and STAAR M

- Cells marked with an asterisk (*) indicate five or fewer students were tested. Blank cells indicate no students were tested.
- Student group assignments are from the district's Public Education Information Management System (PEIMS) submission to the TEA.
- STAAR statistics are based on results from standard STAAR only. STAAR L and STAAR M statistics are computed separately, following TEA reporting practice.
- “Percentage Satisfactory” is the percentage of students achieving Level 2 (Satisfactory) or Level 3 (Advanced).
- Statistics by reporting category are averages for all students (across student groups and genders).
- An “average percentage correct” is computed as follows: for each student, divide the number of items correctly answered by the total number of items in the test section, then average the resulting percentages across all students. For short answers on EOC English tests, an “average rating” is presented; STAAR EOC short answers are rated on a scale of 0 to 3. For written compositions on writing tests, “average score points” is presented. Additional details provided in report footnotes.
- Reading and mathematics statistics for SSI grades 5 and 8 are based on scores cumulative through the second administration.

TELPAS

- Students are counted as having tested if any one of the four domains is rated. Because a TELPAS composite rating is not assigned to a student unless all four domains are rated, the number of TELPAS composite ratings may be smaller than the number tested.
- If a student's composite rating did not increase at least one level from 2013 to 2014, the TEA did not report the 2013 composite rating.
- If a student is rated as advanced high in 2014, the TEA does not differentiate between the advanced and advanced high levels from 2013.

ACP

- Cells marked with an asterisk (*) indicate five or fewer students were tested. Blank cells indicate no students were tested.
- The ACPs are semester exams administered in grades K-12. Not all courses have ACPs. In MIDDLE and HIGH school, ACP results account for a portion of students' final semester grades (10% and 15% respectively). “Average course mark (no ACP)” is computed from semester grades before factoring in ACP scores. In ELEMENTARY school, ACP results account for 5% of students' semester grades for core courses; course-grade statistics are not reported in data packets for elementary grades.
- Raw scores on the ACPs (percentage of items correct) are scaled each year to maintain similar annual passing rates for the district.
- A scale score of at least 70 percent is required to pass an ACP. A course mark of at least 70 percent is required to pass a course.
- Statistics are computed separately for Semester 1 and Semester 2 tests; time of administration during the school year is not relevant. Results from tests written for different school years are not combined.

STUDENT ENROLLMENT

Grade	Enrollment
4	17
5	29
ALL	46

STUDENT AND TEACHER RACE/ETHNICITY

Ethnicity/Race	Students		Teachers*	
	Number	Percent	Number	Percent
Black/African American	17	37.0		
American Indian/Alaska Native	0	0.0		
Asian/Hawaiian/Pacific Islander	0	0.0		
Hispanic	27	58.7		
White	1	2.2		
Multiple	1	2.2		
Other* (teachers only)	—	—		
Not reported (students only)	0	0.0		

*Teacher statistics not available separately for magnets, academies, or vanguards.

SELECT STUDENT GROUP ENROLLMENT

Group	Number	Percent
At-Risk	20	43.5
Economically disadvantaged	38	82.6
Limited English proficient (LEP)	17	37.0
Special education	0	0.0
Talented and Gifted (TAG)	32	69.6

Grade	Year	Enrollment	African American		American Indian		Asian		Hispanic		White		Multiple category	
			N	%	N	%	N	%	N	%	N	%	N	%
4	2012	21	8	38.1	0	0.0	0	0.0	13	61.9	0	0.0	0	0.0
	2013	29	11	37.9	0	0.0	0	0.0	17	58.6	1	3.4	0	0.0
	2014	17	6	35.3	0	0.0	0	0.0	11	64.7	0	0.0	0	0.0
5	2012	25	10	40.0	0	0.0	0	0.0	15	60.0	0	0.0	0	0.0
	2013	39	15	38.5	0	0.0	0	0.0	23	59.0	1	2.6	0	0.0
	2014	29	11	37.9	0	0.0	0	0.0	16	55.2	1	3.4	1	3.4
4-6	2012	46	18	39.1	0	0.0	0	0.0	28	60.9	0	0.0	0	0.0
	2013	68	26	38.2	0	0.0	0	0.0	40	58.8	2	2.9	0	0.0
	2014	46	17	37.0	0	0.0	0	0.0	27	58.7	1	2.2	1	2.2

Grade	Year	Enrollment	Economically Disadvantaged		LEP		Special Education		At Risk		TAG		New (to District)		Gender		Retention Rate (%)
			N	%	N	%	N	%	N	%	N	%	N	%	% Male	% Female	
4	2012	21	16	76.2	7	33.3	0	0.0	7	33.3	16	76.2	0	0.0	76.2	23.8	0.0
	2013	29	24	82.8	9	31.0	1	3.4	13	44.8	19	65.5	2	6.9	62.1	37.9	0.0
	2014	17	14	82.4	7	41.2	0	0.0	8	47.1	12	70.6	0	0.0	41.2	58.8	0.0
5	2012	25	21	84.0	7	28.0	1	4.0	9	36.0	16	64.0	1	4.0	52.0	48.0	0.0
	2013	39	31	79.5	10	25.6	0	0.0	14	35.9	28	71.8	1	2.6	66.7	33.3	0.0
	2014	29	24	82.8	10	34.5	0	0.0	12	41.4	20	69.0	0	0.0	65.5	34.5	0.0
4-6	2012	46	37	80.4	14	30.4	1	2.2	16	34.8	32	69.6	1	2.2	63.0	37.0	0.0
	2013	68	55	80.9	19	27.9	1	1.5	27	39.7	47	69.1	3	4.4	64.7	35.3	0.0
	2014	46	38	82.6	17	37.0	0	0.0	20	43.5	32	69.6	0	0.0	56.5	43.5	0.0

Grade	Year	Average Daily Membership		Average Daily Attendance				Yearly Transactions			Continuously Enrolled		Stability Rate	
		N	District	N	%	District N	District %	N	%	District %	N	District	%	District
4	2012	21	12,493	21	98.9	12,139	97.2	0	0.0	16.6	21	11,218	100.0	89.8
	2013	29	12,406	29	98.5	12,029	97.0	0	0.0	16.5	29	11,339	100.0	91.4
	2014	17	12,543	17	98.4	12,180	97.1	0	0.0	16.3	17	11,075	100.0	88.3
5	2012	25	12,562	25	99.1	12,220	97.3	0	0.0	5.3	25	11,364	100.0	90.5
	2013	39	12,053	39	98.7	11,696	97.0	0	0.0	6.2	39	11,075	100.0	91.9
	2014	29	12,130	29	98.5	11,795	97.2	0	0.0	5.4	29	10,790	100.0	89.0
4-6	2012	46	35,738	45	99.0	34,675	97.0	0	0.0	12.9	46	32,002	100.0	89.5
	2013	68	35,921	67	98.6	34,787	96.8	0	0.0	14.5	68	32,734	100.0	91.1
	2014	46	35,481	45	98.5	34,387	96.9	0	0.0	13.7	46	31,419	100.0	88.6

PERCENTAGE SATISFACTORY (Levels 2 or 3)

Grade	Year	White	African Amer	Hispanic	Econ Disadv	Special Educ	LEP	At Risk	Migrant	Male	Female	All	District	Number Tested (All Students)
4	2012		100.0	100.0	100.0		100.0	100.0		100.0	*	100.0	64.3	21
	2013	*	100.0	94.1	95.8	*	100.0	100.0		94.4	100.0	96.6	62.3	29
	2014		100.0	100.0	100.0		100.0	100.0		100.0	100.0	100.0	59.4	17
5	2012		100.0	93.3	95.0	*	88.9	88.9		100.0	91.7	96.0	68.0	25
	2013	*	100.0	100.0	100.0		100.0	100.0		100.0	100.0	100.0	81.5	39
	2014	*	100.0	100.0	100.0	*	100.0	100.0		100.0	100.0	100.0	78.5	29
3-5	2012		100.0	96.4	97.1	*	93.8	93.8		100.0	94.1	97.8	65.5	46
	2013	*	100.0	97.5	98.2	*	100.0	100.0		97.7	100.0	98.5	71.1	68
	2014	*	100.0	100.0	100.0	*	100.0	100.0		100.0	100.0	100.0	66.7	46

NUMBER TESTED IN GRADES 3-5													
2012		18	28	35	1	16	16		29	17	46	22,173	
2013	2	26	40	55	1	22	23		43	25	68	21,619	
2014	1	17	27	36	1	17	19		26	20	46	21,304	

NUMBER UNSATISFACTORY (Level 1)

Grade	Year	White	African Amer	Hispanic	Econ Disadv	Special Educ	LEP	At Risk	Migrant	Male	Female	All	District	Number Tested (All Students)
4	2012		0	0	0		0	0		0	*	0	2,529	21
	2013	*	0	1	1	*	0	0		1	0	1	2,581	29
	2014		0	0	0		0	0		0	0	0	2,858	17
5	2012		0	1	1	*	1	1		0	1	1	2,665	25
	2013	*	0	0	0		0	0		0	0	0	1,484	39
	2014	*	0	0	0	*	0	0		0	0	0	1,582	29
3-5	2012		0	1	1	*	1	1		0	1	1	7,660	46
	2013	*	0	1	1	*	0	0		1	0	1	6,246	68
	2014	*	0	0	0	*	0	0		0	0	0	7,089	46

NUMBER TESTED IN GRADES 3-5													
2012		18	28	35	1	16	16		29	17	46	22,173	
2013	2	26	40	55	1	22	23		43	25	68	21,619	
2014	1	17	27	36	1	17	19		26	20	46	21,304	

PERCENTAGE ADVANCED (Level 3)

Grade	Year	White	African Amer	Hispanic	Econ Disadv	Special Educ	LEP	At Risk	Migrant	Male	Female	All	District	Number Tested (All Students)
4	2012		37.5	69.2	66.7		85.7	85.7		56.3	*	57.1	11.2	21
	2013	*	54.5	58.8	54.2	*	44.4	44.4		61.1	54.5	58.6	13.5	29
	2014		16.7	54.5	38.5		57.1	50.0		42.9	40.0	41.2	12.0	17
5	2012		70.0	46.7	45.0	*	33.3	33.3		53.8	58.3	56.0	11.1	25
	2013	*	53.3	47.8	48.4		53.8	50.0		60.0	28.6	48.7	13.3	39
	2014	*	36.4	43.8	39.1	*	30.0	27.3		47.4	40.0	44.8	11.5	29
3-5	2012		55.6	57.1	54.3	*	56.3	56.3		55.2	58.8	56.5	11.6	46
	2013	*	53.8	52.5	50.9	*	50.0	47.8		60.5	40.0	52.9	13.5	68
	2014	*	29.4	48.1	38.9	*	41.2	36.8		46.2	40.0	43.5	11.1	46

NUMBER TESTED IN GRADE 3-5													
2012		18	28	35	1	16	16		29	17	46	22,173	
2013	2	26	40	55	1	22	23		43	25	68	21,619	
2014	1	17	27	36	1	17	19		26	20	46	21,304	

AVERAGE PERCENTAGE OF ITEMS CORRECT BY REPORTING CATEGORY

Grade	Year	REPORTING CATEGORY		
		1. Understanding Across Genres (GR 3-5) 1. Understanding/Analysis Across Genres (GR 6-8)	2. Understanding/Analysis of Literary Texts	3. Understanding/Analysis of Informational Texts
4	2012	89.0	79.9	83.3
	2013	83.1	83.9	83.0
	2014	79.4	83.0	80.9
5	2012	85.6	81.1	90.8
	2013	82.8	86.5	82.7
	2014	84.5	79.5	85.8
3-5	2012	87.2	80.5	87.4
	2013	82.9	85.4	82.8
	2014	82.6	80.8	84.0

PERCENTAGE SATISFACTORY (Levels 2 or 3)

Grade	Year	White	African Amer	Hispanic	Econ Disadv	Special Educ	LEP	At Risk	Migrant	Male	Female	All	District	Number Tested (All Students)
4	2012		100.0	100.0	100.0		100.0	100.0		100.0	*	100.0	60.6	21
	2013	*	100.0	100.0	100.0	*	100.0	100.0		100.0	100.0	100.0	63.9	29
	2014		100.0	100.0	100.0		100.0	100.0		100.0	100.0	100.0	61.9	17

NUMBER TESTED IN GRADE 4													
2012		8	13	15		7	7		16	5	21	7,039	
2013	1	11	17	24	1	9	9		18	11	29	6,771	
2014		6	11	13		7	8		7	10	17	7,022	

NUMBER UNSATISFACTORY (Level 1)

Grade	Year	White	African Amer	Hispanic	Econ Disadv	Special Educ	LEP	At Risk	Migrant	Male	Female	All	District	Number Tested (All Students)
4	2012		0	0	0		0	0		0	*	0	2,772	21
	2013	*	0	0	0	*	0	0		0	0	0	2,442	29
	2014		0	0	0		0	0		0	0	0	2,675	17

NUMBER TESTED IN GRADE 4													
2012		8	13	15		7	7		16	5	21	7,039	
2013	1	11	17	24	1	9	9		18	11	29	6,771	
2014		6	11	13		7	8		7	10	17	7,022	

PERCENTAGE ADVANCED (Level 3)

Grade	Year	White	African Amer	Hispanic	Econ Disadv	Special Educ	LEP	At Risk	Migrant	Male	Female	All	District	Number Tested (All Students)
4	2012		37.5	23.1	20.0		42.9	42.9		37.5	*	28.6	5.1	21
	2013	*	18.2	29.4	20.8	*	22.2	22.2		33.3	18.2	27.6	4.7	29
	2014		0.0	18.2	7.7		14.3	12.5		0.0	20.0	11.8	3.7	17

NUMBER TESTED IN GRADE 4													
2012		8	13	15		7	7		16	5	21	7,039	
2013	1	11	17	24	1	9	9		18	11	29	6,771	
2014		6	11	13		7	8		7	10	17	7,022	

AVERAGE PERCENTAGE OF ITEMS CORRECT BY REPORTING CATEGORY

Grade	Year	REPORTING CATEGORY			
		1. Composition ¹ GR 4: Personal Narrative GR 7: Expository	1. Composition ¹ GR 4: Expository GR 7: Personal Narrative	2. Revision	3. Editing
4	2012	2.7	2.7	83.6	76.9
	2013	5.8	4.7	78.2	84.8
	2014	5.6	5.8	81.7	77.7

¹Average score points (range 0-8). A STAAR composition is rated twice on a scale of 1 to 4, and the ratings are summed to determine score points for the composition. Score point scale: 0=Non-scorable; 2=Very Limited; 3=between Very Limited and Basic; 4=Basic; 5=between Basic and Satisfactory; 6=Satisfactory; 7=between Satisfactory and Accomplished; 8=Accomplished

PERCENTAGE SATISFACTORY (Levels 2 or 3)

Grade	Year	White	African Amer	Hispanic	Econ Disadv	Special Educ	LEP	At Risk	Migrant	Male	Female	All	District	Number Tested (All Students)
4	2012		100.0	100.0	100.0		100.0	100.0		100.0	*	100.0	53.0	21
	2013	*	100.0	94.1	95.8	*	100.0	100.0		94.4	100.0	96.6	57.5	29
	2014		83.3	100.0	92.3		100.0	100.0		85.7	100.0	94.1	59.0	17
5	2012		100.0	100.0	100.0	*	100.0	100.0		100.0	100.0	100.0	64.1	25
	2013	*	100.0	100.0	100.0		100.0	100.0		100.0	100.0	100.0	81.7	39
	2014	*	100.0	100.0	100.0	*	100.0	100.0		100.0	100.0	100.0	81.4	29
3-5	2012		100.0	100.0	100.0	*	100.0	100.0		100.0	100.0	100.0	57.5	46
	2013	*	100.0	97.5	98.2	*	100.0	100.0		97.7	100.0	98.5	65.3	68
	2014	*	94.1	100.0	97.2	*	100.0	100.0		96.2	100.0	97.8	66.3	46

NUMBER TESTED IN GRADES 3-5													
2012		18	28	35	1	16	23		29	17	46	35,372	
2013	2	26	40	55	1	22	23		43	25	68	34,686	
2014	1	17	27	36	1	17	19		26	20	46	35,222	

NUMBER UNSATISFACTORY (Level 1)

Grade	Year	White	African Amer	Hispanic	Econ Disadv	Special Educ	LEP	At Risk	Migrant	Male	Female	All	District	Number Tested (All Students)
4	2012		0	0	0		0	0		0	*	0	5,511	21
	2013	*	0	1	1	*	0	0		1	0	1	4,919	29
	2014		1	0	1		0	0		1	0	1	4,803	17
5	2012		0	0	0	*	0	0		0	0	0	4,228	25
	2013	*	0	0	0		0	0		0	0	0	2,035	39
	2014	*	0	0	0	*	0	0		0	0	0	2,088	29
3-5	2012		0	0	0	*	0	0		0	0	0	15,026	46
	2013	*	0	1	1	*	0	0		1	0	1	12,040	68
	2014	*	1	0	1	*	0	0		1	0	1	11,879	46

NUMBER TESTED IN GRADES 3-5													
2012		18	28	35	1	16	23		29	17	46	35,372	
2013	2	26	40	55	1	22	23		43	25	68	34,686	
2014	1	17	27	36	1	17	19		26	20	46	35,222	

PERCENTAGE ADVANCED (Level 3)

Grade	Year	White	African Amer	Hispanic	Econ Disadv	Special Educ	LEP	At Risk	Migrant	Male	Female	All	District	Number Tested (All Students)
4	2012		12.5	69.2	53.3		85.7	85.7		50.0	*	47.6	6.1	21
	2013	*	18.2	47.1	33.3	*	55.6	55.6		33.3	45.5	37.9	9.5	29
	2014		0.0	63.6	53.8		71.4	62.5		57.1	30.0	41.2	14.0	17
5	2012		70.0	53.3	50.0	*	44.4	44.4		53.8	66.7	60.0	10.4	25
	2013	*	33.3	69.6	58.1		84.6	78.6		64.0	35.7	53.8	12.8	39
	2014	*	36.4	56.3	52.2	*	70.0	63.6		57.9	40.0	51.7	15.7	29
3-5	2012		44.4	60.7	51.4	*	62.5	62.5		51.7	58.8	54.3	8.1	46
	2013	*	26.9	60.0	47.3	*	72.7	69.6		51.2	40.0	47.1	10.4	68
	2014	*	23.5	59.3	52.8	*	70.6	63.2		57.7	35.0	47.8	13.3	46

NUMBER TESTED IN GRADE 3-5													
2012		18	28	35	1	16	16		29	17	46	35,372	
2013	2	26	40	55	1	22	23		43	25	68	34,686	
2014	1	17	27	36	1	17	19		26	20	46	35,222	

AVERAGE PERCENTAGE OF ITEMS CORRECT BY REPORTING CATEGORY

Grade	Year	REPORTING CATEGORY				
		1. Numbers, Operations, and Quantitative Reasoning	2. Patterns, Relationships, and Algebraic Reasoning	3. Geometry and Spatial Reasoning	4. Measurement	5. Probability and Statistics
4	2012	88.0	82.5	85.7	82.7	87.6
	2013	85.8	78.7	85.9	85.8	77.9
	2014	81.3	87.3	84.3	81.6	81.2
5	2012	86.9	84.0	90.9	90.5	88.0
	2013	89.9	85.9	87.9	83.7	90.0
	2014	88.7	82.2	83.3	84.5	80.9
3-5	2012	87.4	83.3	88.5	87.0	87.8
	2013	88.1	82.8	87.1	84.6	84.8
	2014	86.0	84.1	83.6	83.4	81.0

PERCENTAGE SATISFACTORY (Levels 2 or 3)

Grade	Year	White	African Amer	Hispanic	Econ Disadv	Special Educ	LEP	At Risk	Migrant	Male	Female	All	District	Number Tested (All Students)
5	2012		100.0	93.3	95.0	*	88.9	88.9		100.0	91.7	96.0	58.2	25
	2013	*	100.0	100.0	100.0		100.0	100.0		100.0	100.0	100.0	65.1	39
	2014	*	100.0	93.8	95.7	*	100.0	90.9		94.7	100.0	96.6	61.3	29

NUMBER TESTED IN GRADE 5													
2012		10	15	20	1	9	9		13	12	25	10,697	
2013	1	15	23	31		13	14		25	14	39	10,180	
2014	1	11	16	23	1	10	11		19	10	29	9,073	

NUMBER UNSATISFACTORY (Level 1)

Grade	Year	White	African Amer	Hispanic	Econ Disadv	Special Educ	LEP	At Risk	Migrant	Male	Female	All	District	Number Tested (All Students)
5	2012		0	1	1	*	1	1		0	1	1	4476	25
	2013	*	0	0	0		0	0		0	0	0	3551	39
	2014	*	0	1	1	*	0	1		1	0	1	3511	29

NUMBER TESTED IN GRADE 5													
2012		10	15	20	1	9	9		13	12	25	10,697	
2013	1	15	23	31		13	14		25	14	39	10,180	
2014	1	11	16	23	1	10	11		19	10	29	9,073	

PERCENTAGE ADVANCED (Level 3)

Grade	Year	White	African Amer	Hispanic	Econ Disadv	Special Educ	LEP	At Risk	Migrant	Male	Female	All	District	Number Tested (All Students)
5	2012		60.0	33.3	30.0	*	22.2	22.2		46.2	41.7	44.0	6.5	25
	2013	*	13.3	21.7	16.1		38.5	35.7		24.0	7.1	17.9	6.6	39
	2014	*	9.1	25.0	17.4	*	20.0	18.2		26.3	10.0	20.7	5.3	29

NUMBER TESTED IN GRADE 5													
2012		10	15	20	1	9	9		13	12	25	10,697	
2013	1	15	23	31		13	14		25	14	39	10,180	
2014	1	11	16	23	1	10	11		19	10	29	9,073	

AVERAGE PERCENTAGE OF ITEMS CORRECT BY REPORTING CATEGORY


Grade	Year	REPORTING CATEGORY			
		1. Matter and Energy	2. Force, Motion, and Energy	3. Earth and Space	4. Organisms and Environments
5	2012	89.0	95.2	84.7	87.4
	2013	89.1	91.0	77.1	79.1
	2014	81.0	81.4	82.5	80.3

PERFORMANCE IN 2014

Grade 2013-14 (N Rated)	Domain:	Listening		Speaking		Writing		Reading		Composite	
	2014 Level	N	%	N	%	N	%	N	%	N	%
4 (7)	Beginning	0	0.0	0	0.0	0	0.0	0	0.0	0	0.0
	Intermediate	1	14.3	0	0.0	1	14.3	0	0.0	0	0.0
	Advanced	2	28.6	4	57.1	3	42.9	1	14.3	1	14.3
	Advanced High	4	57.1	3	42.9	3	42.9	6	85.7	6	85.7
5 (10)	Beginning	0	0.0	0	0.0	0	0.0	0	0.0	0	0.0
	Intermediate	1	10.0	2	20.0	0	0.0	0	0.0	0	0.0
	Advanced	6	60.0	5	50.0	7	70.0	0	0.0	2	20.0
	Advanced High	3	30.0	3	30.0	3	30.0	10	100.0	8	80.0
ALL (17)	Beginning	0	0.0	0	0.0	0	0.0	0	0.0	0	0.0
	Intermediate	2	11.8	2	11.8	1	5.9	0	0.0	0	0.0
	Advanced	8	47.1	9	52.9	10	58.8	1	5.9	3	17.6
	Advanced High	7	41.2	6	35.3	6	35.3	16	94.1	14	82.4

**PROGRESSION FROM
2013 TO 2014**

Number Rated Both Years N (%) Progressed	2014 Level	2013 Level			
		Beg	Int	Adv	Adv High
7 6 (85.7%)	Beginning	0			
	Intermediate	0	0		
	Advanced	0	0	1	
	Advanced High	0	0	6	
10 8 (80.0%)	Beginning	0			
	Intermediate	0	0		
	Advanced	0	0	2	
	Advanced High	0	0	8	
17 14 (82.4%)	Beginning	0			
	Intermediate	0	0		
	Advanced	0	0	3	
	Advanced High	0	0	14	

 Indicates students who progressed at least one level from 2013 to 2014.

SEMESTER 1 TESTS

Number Tested	Averages				% Passing		District % Passing	
	% Items Correct	Scale Score	Course Mark	Course Mark (no ACP)	ACP	Course	ACP	Course

GRADE 4 ART

17	76.7	88.0	95.0		100.0	100.0	77.4	99.9
----	------	------	------	--	-------	-------	------	------

GRADE 4 LANGUAGE ARTS

17	73.4	82.3	91.2		88.2	100.0	57.7	91.1
----	------	------	------	--	------	-------	------	------

GRADE 4 MATHEMATICS

17	70.0	83.6	89.5		100.0	100.0	55.0	89.0
----	------	------	------	--	-------	-------	------	------

GRADE 4 READING

17	67.5	78.4	90.9		100.0	100.0	54.2	89.7
----	------	------	------	--	-------	-------	------	------

GRADE 4 SCIENCE

17	64.7	76.5	90.6		76.5	100.0	52.1	96.4
----	------	------	------	--	------	-------	------	------

GRADE 4 SOCIAL STUDIES

17	77.9	87.0	92.4		100.0	100.0	37.8	95.9
----	------	------	------	--	-------	-------	------	------

GRADE 5 LANGUAGE ARTS

25	93.7	93.7	88.1		100.0	100.0	77.2	93.6
----	------	------	------	--	-------	-------	------	------

GRADE 5 MATHEMATICS

25	63.9	80.3	89.8		92.0	100.0	53.7	89.2
----	------	------	------	--	------	-------	------	------

GRADE 5 MUSIC

23		84.3	95.0		100.0	100.0	66.5	99.9
----	--	------	------	--	-------	-------	------	------

GRADE 5 READING

25	86.1	86.1	83.6		100.0	100.0	62.9	90.8
----	------	------	------	--	-------	-------	------	------

GRADE 5 SCIENCE

25	66.2	77.5	92.0		84.0	100.0	50.8	94.3
----	------	------	------	--	------	-------	------	------

SEMESTER 2 TESTS

Number Tested	Averages				% Passing		District % Passing	
	% Items Correct	Scale Score	Course Mark	Course Mark (no ACP)	ACP	Course	ACP	Course

GRADE 4 ART

17		77.8	95.0		94.1	100.0	50.6	99.9
----	--	------	------	--	------	-------	------	------

GRADE 4 LANGUAGE ARTS

17	89.4	90.6	91.4		100.0	100.0	63.8	88.7
----	------	------	------	--	-------	-------	------	------

GRADE 4 MATHEMATICS

17	75.7	84.5	89.2		100.0	100.0	62.3	88.7
----	------	------	------	--	-------	-------	------	------

GRADE 4 READING

17	86.9	88.5	91.9		100.0	100.0	58.4	87.3
----	------	------	------	--	-------	-------	------	------

GRADE 4 SCIENCE

17	90.7	93.7	94.7		100.0	100.0	56.9	94.9
----	------	------	------	--	-------	-------	------	------

GRADE 4 SOCIAL STUDIES

17	78.9	87.8	93.5		100.0	100.0	38.7	94.8
----	------	------	------	--	-------	-------	------	------

GRADE 5 LANGUAGE ARTS

29	83.6	85.5	86.2		100.0	100.0	69.6	94.1
----	------	------	------	--	-------	-------	------	------

GRADE 5 MATHEMATICS

29	74.2	85.1	89.3		93.1	100.0	59.7	90.2
----	------	------	------	--	------	-------	------	------

GRADE 5 MUSIC

29		75.8	95.6		82.8	100.0	73.2	99.7
----	--	------	------	--	------	-------	------	------

GRADE 5 READING

29	82.5	87.2	85.3		100.0	100.0	63.1	90.0
----	------	------	------	--	-------	-------	------	------

GRADE 5 SCIENCE

29	86.9	88.5	90.7		93.1	100.0	63.6	93.2
----	------	------	------	--	------	-------	------	------

SEMESTER 1 TESTS

Number Tested	Averages				% Passing		District % Passing	
	% Items Correct	Scale Score	Course Mark	Course Mark (no ACP)	ACP	Course	ACP	Course

GRADE 5 SOCIAL STUDIES

25	60.4	79.9	84.2		96.0	100.0	48.2	97.0
----	------	------	------	--	------	-------	------	------

SEMESTER 2 TESTS

Number Tested	Averages				% Passing		District % Passing	
	% Items Correct	Scale Score	Course Mark	Course Mark (no ACP)	ACP	Course	ACP	Course

GRADE 5 SOCIAL STUDIES

29	77.4	86.7	85.6		96.6	100.0	53.5	96.0
----	------	------	------	--	------	-------	------	------