

# DATA PACKET

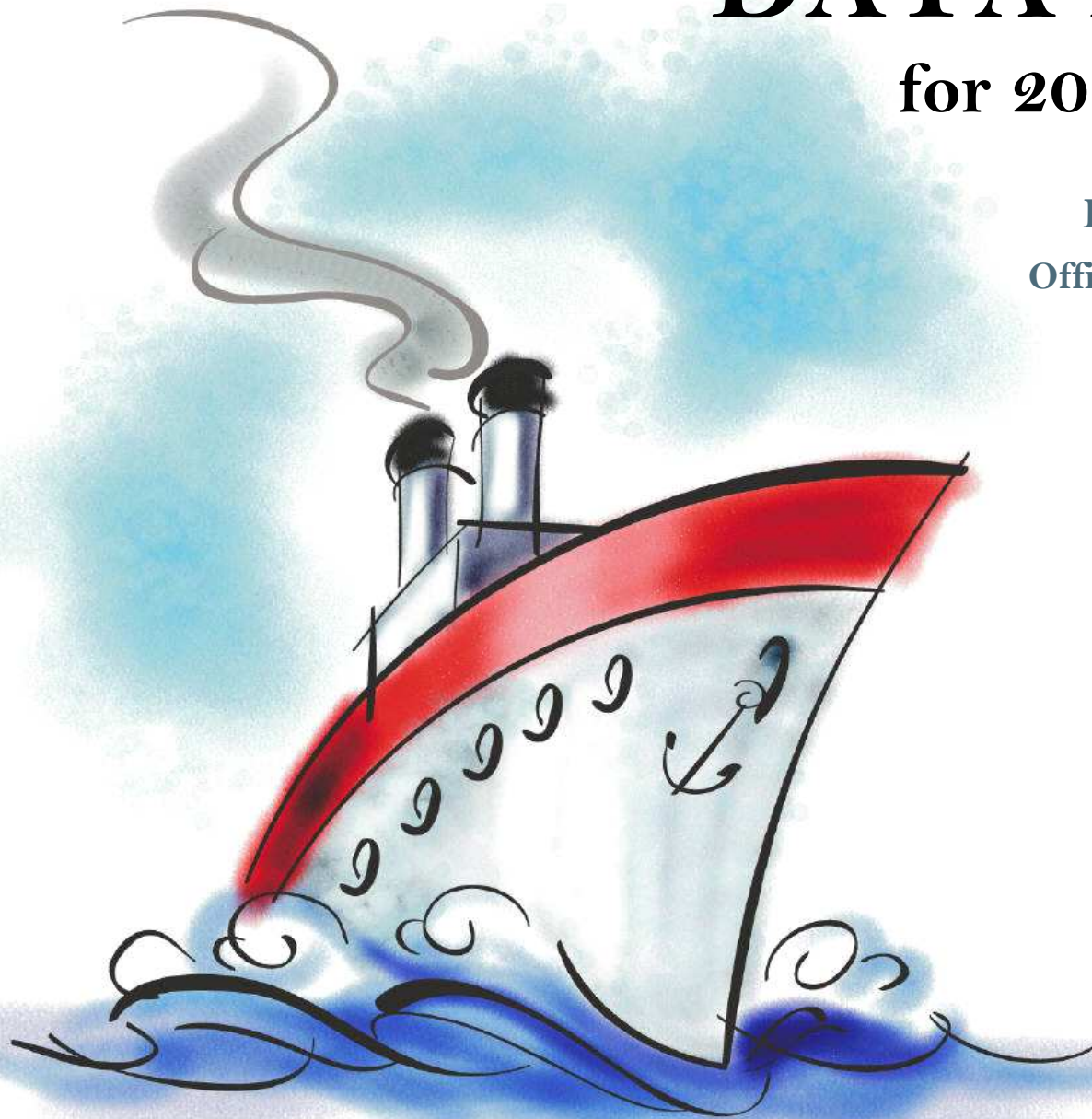
for 2014-15 planning

Evaluation & Assessment  
Office of Institutional Research  
<http://mydata.dallasisd.org>  
[OIR@dallasisd.org](mailto:OIR@dallasisd.org)

July 31, 2014

School Number 212

**HARRY STONE  
MONTESSORI  
VANGUARD**



Dallas Independent School District

2. Contents ..... Table of Contents

**STUDENTS AND STAFF**

6. Summary ..... Summary of Student and Teacher Statistics

8. Enroll (2) ..... Enrollment Statistics by Select Student Group

10. Teachers ..... Teacher Statistics

**STAAR (English)**

11. Reading (3-8) .... STAAR 3-8 Reading in English

19. Math (3-8) ..... STAAR 3-8 Mathematics in English

**ITBS/LOGRAMOS**

27. Compliance ..... SCE Compliance for At-Risk Students

30. Math ..... ITBS Mathematics Subtests

**ENGLISH PROFICIENCY**

34. TELPAS ..... Texas English Language Proficiency Assessment System

**LOCAL ASSESSMENT**

35. ACP ..... Assessments of Course Performance

3. Notes ..... Notes and Data Descriptions

7. Enroll (1) ..... Enrollment Statistics by Ethnicity

9. Attendance ..... Student Attendance Statistics

15. Writing (3-8) ..... STAAR 3-8 Writing in English

23. Science (3-8) ..... STAAR 3-8 Science in English

28. Reading ..... ITBS Reading Subtests

## **2013-14 SCHOOL SUMMARY**

- Student percentages are computed as the percentage of total student enrollment.
- Additional statistics are available in ENROLLMENT and TEACHER reports.
- Race/ethnic categories are based on the newest federal standards for ethnicity and race reporting, though some categories have been combined because of small group sizes. Students reporting their ethnicity as “Hispanic” are not counted in any race category.
- “Economically disadvantaged” students are those who qualify for free or reduced-price lunch through the federal government's program.
- Teacher demographics and assignments are from the district's Public Education Information Management System (PEIMS) submission to the TEA.

## **ENROLLMENT**

- Statistics are based on the school's enrollment at the end of the fifth six-weeks grading period.
- “Economically disadvantaged” students are those receiving free or reduced-price lunches.
- “New” students were new to the district in 2013-14. They are counted as new if not enrolled in a district campus before the last day of the 2012-13 school year.
- The “retention rate” is the percentage of students in the same grade at the end of the fifth six-weeks grading period for both 2012-13 and 2013-14.

## **ATTENDANCE**

- Statistics are based on student attendance through the end of the sixth six-weeks grading period (the end of the school year).
- “Average daily membership” is the total number of school days students were ENROLLED divided by the number of school days in the year.
- The “average daily attendance” number (N) is the total number of school days students were IN ATTENDANCE divided by the number of school days in the year. The “average daily attendance” percentage (%) is the average attendance rate. For each student, the number of days attended is divided by the number of days enrolled. This rate is then averaged across students.
- The number (N) of “yearly transactions” is the total number of transfer and withdrawal transactions in the school year. The percentage (%) is the number of transactions divided by “average daily membership,” which gives (on average) the percentage of the membership associated with a transaction.
- “Continuously enrolled” students are enrolled and in attendance for a minimum number of instructional days in at least one course at the school between the beginning of the school year and the first day of the main STAAR testing period. The minimum number varies depending on the school year's calendar, but is typically around 130 days.
- The “stability rate” is the number of continuously enrolled students divided by “average daily membership.”

## **TEACHERS**

- Teacher demographics and assignments are from the district's Public Education Information Management System (PEIMS) submission to the TEA.
- Teacher absences counted towards the average DO NOT include vacation days (coded as VAC in personnel database).
- Retention rate for a school year is computed with numerator “# of teachers assigned to the school both that year and the year prior” and denominator “# of teachers assigned to the school for the prior year.” That is, the retention rate is the percentage of the prior year's teachers who continued at the school.

### **STAAR, STAAR L, and STAAR M**

- Cells marked with an asterisk (\*) indicate five or fewer students were tested. Blank cells indicate no students were tested.
- Student group assignments are from the district's Public Education Information Management System (PEIMS) submission to the TEA.
- STAAR statistics are based on results from standard STAAR only. STAAR L and STAAR M statistics are computed separately, following TEA reporting practice.
- “Percentage Satisfactory” is the percentage of students achieving Level 2 (Satisfactory) or Level 3 (Advanced).
- Statistics by reporting category are averages for all students (across student groups and genders).
- An “average percentage correct” is computed as follows: for each student, divide the number of items correctly answered by the total number of items in the test section, then average the resulting percentages across all students. For short answers on EOC English tests, an “average rating” is presented; STAAR EOC short answers are rated on a scale of 0 to 3. For written compositions on writing tests, “average score points” is presented. Additional details provided in report footnotes.
- Reading and mathematics statistics for SSI grades 5 and 8 are based on scores cumulative through the second administration.

### **SCE COMPLIANCE and ITBS / ITED / LOGRAMOS**

- Cells marked with an asterisk (\*) indicate five or fewer students were tested. Blank cells indicate no students were tested.
- Student group assignments are based on demographic data in the Dallas ISD student database.
- Kindergarten ITBS reading statistics are based on the Reading Profile Total summary score. All other grades' ITBS reading statistics, and Logramos reading statistics for all grades, are based on the Reading Total summary score. (Reading Total values not available with use of the ITBS form administered in kindergarten.) “Number tested” statistics include kindergarten.
- Kindergarten ITBS mathematics statistics are based on the Mathematics subtest score. All other grades' statistics are based on the Mathematics Total summary score. (Mathematics Total values not available with use of the ITBS form administered in kindergarten.) “Number tested” statistics include kindergarten.
- Mathematics Total summary scores are combinations of the Mathematics Concepts, Problems, and Computation subtest results. For schools that did not administer Mathematics Concepts or Mathematics Problems subtests, Mathematics Computation statistics are provided separately.

### **TELPAS**

- Students are counted as having tested if any one of the four domains is rated. Because a TELPAS composite rating is not assigned to a student unless all four domains are rated, the number of TELPAS composite ratings may be smaller than the number tested.
- If a student's composite rating did not increase at least one level from 2013 to 2014, the TEA did not report the 2013 composite rating.
- If a student is rated as advanced high in 2014, the TEA does not differentiate between the advanced and advanced high levels from 2013.

**ACP**

- Cells marked with an asterisk (\*) indicate five or fewer students were tested. Blank cells indicate no students were tested.
- The ACPs are semester exams administered in grades K-12. Not all courses have ACPs. In MIDDLE and HIGH school, ACP results account for a portion of students' final semester grades (10% and 15% respectively). "Average course mark (no ACP)" is computed from semester grades before factoring in ACP scores. In ELEMENTARY school, ACP results account for 5% of students' semester grades for core courses; course-grade statistics are not reported in data packets for elementary grades.
- Raw scores on the ACPs (percentage of items correct) are scaled each year to maintain similar annual passing rates for the district.
- A scale score of at least 70 percent is required to pass an ACP. A course mark of at least 70 percent is required to pass a course.
- Statistics are computed separately for Semester 1 and Semester 2 tests; time of administration during the school year is not relevant. Results from tests written for different school years are not combined.

**STUDENT ENROLLMENT**

Grade	Enrollment
PK	45
KN	47
1	47
2	53
3	51
4	46
5	45
ALL	334

**STUDENT AND TEACHER RACE/ETHNICITY**

Ethnicity/Race	Students		Teachers	
	Number	Percent	Number	Percent
Black/African American	162	48.5	7	35.0
American Indian/Alaska Native	3	0.9	*	*
Asian/Hawaiian/Pacific Islander	2	0.6	*	*
Hispanic	134	40.1	1	5.0
White	30	9.0	10	50.0
Multiple	3	0.9	1	5.0
Other* (teachers only)	—	—	1	5.0
Not reported (students only)	0	0.0	—	—

\*For teachers, "Other" category includes American Indian/Alaska Native and Asian/Hawaiian/Pacific Islander.

**SELECT STUDENT GROUP ENROLLMENT**

Group	Number	Percent
At-Risk	101	30.2
Economically disadvantaged	191	57.2
Limited English proficient (LEP)	40	12.0
Special education	4	1.2
Talented and Gifted (TAG)	68	20.4

Grade	Year	Enrollment	African American		American Indian		Asian		Hispanic		White		Multiple category	
			N	%	N	%	N	%	N	%	N	%	N	%
PK	2012	44	18	40.9	0	0.0	0	0.0	19	43.2	7	15.9	0	0.0
	2013	45	22	48.9	0	0.0	0	0.0	17	37.8	4	8.9	2	4.4
	2014	45	19	42.2	0	0.0	1	2.2	19	42.2	6	13.3	0	0.0
KN	2012	43	23	53.5	2	4.7	1	2.3	15	34.9	2	4.7	0	0.0
	2013	46	20	43.5	0	0.0	0	0.0	19	41.3	7	15.2	0	0.0
	2014	47	25	53.2	0	0.0	0	0.0	16	34.0	4	8.5	2	4.3
1	2012	48	23	47.9	1	2.1	0	0.0	18	37.5	6	12.5	0	0.0
	2013	53	30	56.6	2	3.8	1	1.9	17	32.1	3	5.7	0	0.0
	2014	47	22	46.8	0	0.0	0	0.0	21	44.7	4	8.5	0	0.0
2	2012	42	21	50.0	0	0.0	0	0.0	13	31.0	7	16.7	1	2.4
	2013	50	24	48.0	1	2.0	0	0.0	20	40.0	5	10.0	0	0.0
	2014	53	30	56.6	2	3.8	1	1.9	17	32.1	3	5.7	0	0.0
3	2012	48	24	50.0	0	0.0	0	0.0	21	43.8	3	6.3	0	0.0
	2013	47	24	51.1	0	0.0	0	0.0	14	29.8	8	17.0	1	2.1
	2014	51	24	47.1	1	2.0	0	0.0	21	41.2	5	9.8	0	0.0
4	2012	47	23	48.9	0	0.0	0	0.0	16	34.0	6	12.8	2	4.3
	2013	47	22	46.8	0	0.0	0	0.0	24	51.1	1	2.1	0	0.0
	2014	46	21	45.7	0	0.0	0	0.0	17	37.0	7	15.2	1	2.2
5	2012	48	21	43.8	0	0.0	0	0.0	20	41.7	5	10.4	2	4.2
	2013	48	21	43.8	0	0.0	0	0.0	19	39.6	6	12.5	2	4.2
	2014	45	21	46.7	0	0.0	0	0.0	23	51.1	1	2.2	0	0.0
PK-6	2012	368	173	47.0	3	0.8	1	0.3	147	39.9	39	10.6	5	1.4
	2013	382	183	47.9	3	0.8	1	0.3	151	39.5	37	9.7	7	1.8
	2014	334	162	48.5	3	0.9	2	0.6	134	40.1	30	9.0	3	0.9

Grade	Year	Enrollment	Economically Disadvantaged		LEP		Special Education		At Risk		TAG		New (to District)		Gender		Retention Rate (%)
			N	%	N	%	N	%	N	%	N	%	N	%	% Male	% Female	
PK	2012	44	21	47.7	6	13.6	0	0.0	6	13.6	0	0.0	43	97.7	25.0	75.0	2.3
	2013	45	18	40.0	4	8.9	1	2.2	4	8.9	0	0.0	44	97.8	46.7	53.3	0.0
	2014	45	27	60.0	3	6.7	0	0.0	3	6.7	0	0.0	45	100.0	40.0	60.0	0.0
KN	2012	43	23	53.5	3	7.0	0	0.0	3	7.0	3	7.0	3	7.0	39.5	60.5	0.0
	2013	46	21	45.7	6	13.0	0	0.0	6	13.0	4	8.7	3	6.5	26.1	73.9	0.0
	2014	47	28	59.6	4	8.5	0	0.0	4	8.5	0	0.0	4	8.5	51.1	48.9	0.0
1	2012	48	18	37.5	3	6.3	0	0.0	3	6.3	9	18.8	3	6.3	47.9	52.1	0.0
	2013	53	26	49.1	6	11.3	0	0.0	6	11.3	6	11.3	4	7.5	41.5	58.5	0.0
	2014	47	26	55.3	6	12.8	0	0.0	6	12.8	13	27.7	5	10.6	25.5	74.5	0.0
2	2012	42	17	40.5	4	9.5	1	2.4	16	38.1	7	16.7	0	0.0	47.6	52.4	0.0
	2013	50	23	46.0	5	10.0	0	0.0	13	26.0	9	18.0	1	2.0	46.0	54.0	0.0
	2014	53	29	54.7	6	11.3	0	0.0	24	45.3	9	17.0	0	0.0	41.5	58.5	0.0
3	2012	48	33	68.8	6	12.5	2	4.2	26	54.2	17	35.4	2	4.2	52.1	47.9	0.0
	2013	47	23	48.9	4	8.5	2	4.3	17	36.2	13	27.7	4	8.5	40.4	59.6	0.0
	2014	51	28	54.9	5	9.8	1	2.0	16	31.4	13	25.5	0	0.0	45.1	54.9	0.0
4	2012	47	21	44.7	4	8.5	0	0.0	16	34.0	16	34.0	1	2.1	48.9	51.1	0.0
	2013	47	27	57.4	9	19.1	1	2.1	26	55.3	21	44.7	0	0.0	42.6	57.4	0.0
	2014	46	24	52.2	7	15.2	2	4.3	21	45.7	13	28.3	0	0.0	43.5	56.5	0.0
5	2012	48	24	50.0	7	14.6	1	2.1	14	29.2	23	47.9	2	4.2	43.8	56.3	0.0
	2013	48	22	45.8	6	12.5	0	0.0	17	35.4	18	37.5	0	0.0	50.0	50.0	0.0
	2014	45	29	64.4	9	20.0	1	2.2	27	60.0	20	44.4	1	2.2	44.4	55.6	0.0
PK-6	2012	368	187	50.8	41	11.1	4	1.1	97	26.4	106	28.8	55	14.9	42.4	57.6	0.3
	2013	382	188	49.2	44	11.5	5	1.3	105	27.5	93	24.3	57	14.9	41.6	58.4	0.0
	2014	334	191	57.2	40	12.0	4	1.2	101	30.2	68	20.4	55	16.5	41.6	58.4	0.0



Grade	Year	Average Daily Membership		Average Daily Attendance				Yearly Transactions			Continuously Enrolled		Stability Rate	
		N	District	N	%	District N	District %	N	%	District %	N	District	%	District
KN	2012	43	13,633	42	98.8	13,086	96.0	1	2.3	19.9	43	11,731	100.0	86.0
	2013	46	14,067	45	98.0	13,411	95.3	3	6.5	20.0	46	12,178	100.0	86.6
	2014	47	13,618	46	97.7	13,058	95.9	0	0.0	19.8	47	11,271	100.0	82.8
1	2012	49	14,026	48	98.3	13,533	96.5	1	2.0	18.3	49	12,292	100.0	87.6
	2013	53	14,140	52	97.7	13,578	96.0	8	15.0	18.7	52	12,528	97.4	88.6
	2014	48	14,262	47	98.2	13,732	96.3	0	0.0	19.2	47	12,149	98.6	85.2
2	2012	42	13,338	41	98.0	12,932	97.0	0	0.0	16.8	42	11,883	100.0	89.1
	2013	50	13,555	49	98.0	13,077	96.5	2	4.0	17.1	50	12,206	100.0	90.0
	2014	53	13,652	52	98.3	13,209	96.8	0	0.0	17.0	52	11,868	98.1	86.9
3	2012	48	12,874	47	97.9	12,508	97.2	1	2.1	15.5	48	11,592	99.7	90.0
	2013	48	12,879	47	97.5	12,466	96.8	0	0.0	15.9	47	11,710	98.5	90.9
	2014	51	13,159	50	98.2	12,763	97.0	0	0.0	17.3	51	11,491	100.0	87.3
4	2012	47	12,493	47	98.6	12,139	97.2	1	2.1	16.6	47	11,218	99.6	89.8
	2013	47	12,406	47	98.9	12,029	97.0	2	4.3	16.5	47	11,339	100.0	91.4
	2014	47	12,543	46	98.0	12,180	97.1	0	0.0	16.3	46	11,075	98.6	88.3
5	2012	48	12,562	47	98.9	12,220	97.3	0	0.0	5.3	48	11,364	100.0	90.5
	2013	48	12,053	48	99.0	11,696	97.0	1	2.1	6.2	48	11,075	100.0	91.9
	2014	45	12,130	44	98.7	11,795	97.2	0	0.0	5.4	45	10,790	100.0	89.0
KN-6	2012	324	89,609	319	98.5	86,734	96.8	4	1.2	15.8	325	79,500	100.0	88.7
	2013	338	90,563	332	98.3	87,318	96.4	16	4.7	16.6	336	81,356	99.3	89.8
	2014	290	90,172	285	98.2	87,148	96.6	0	0.0	16.5	288	78,198	99.2	86.7

**Teachers: 20**

**DISTRIBUTIONS**

Ethnicity/Race	Number	Percentage
African American	7	35.0
Hispanic	1	5.0
White	10	50.0
Multiple	1	5.0
Other	1	5.0

Gender	Number	Percentage
Female	18	90.0
Male	2	10.0

**ATTENDANCE / RETENTION**

	Average Absences	Retention Rate
<b>2011-12</b>	7.0	—
<b>2012-13</b>	8.3	84.0
<b>2013-14</b>	6.4	70.8

**YEARS EXPERIENCE**

Years	Number	Percentage
Beginning (0)	2	10.0
1	2	10.0
2	0	0.0
3	1	5.0
4	1	5.0
5	0	0.0
1-3	3	15.0
More than 3	15	75.0
1 - 5	4	20.0
6 - 10	1	5.0
11 - 20	5	25.0
More than 20	8	40.0

NOTE: Absence statistics for 2008-09 and 2009-10 include all teachers at both middle and elementary schools.

**PERCENTAGE SATISFACTORY (Levels 2 or 3)**

Grade	Year	White	African Amer	Hispanic	Econ Disadv	Special Educ	LEP	At Risk	Migrant	Male	Female	All	District	Number Tested (All Students)
3	2012	*	91.7	90.5	86.7	*	83.3	83.3		92.0	91.3	91.7	63.6	48
	2013	100.0	79.2	92.9	82.6	*	*	61.5		84.2	89.3	87.2	67.8	47
	2014	*	79.2	85.7	87.9		*	46.7		87.0	82.1	84.3	61.7	51
4	2012	100.0	87.0	87.5	84.2		*	66.7		95.7	83.3	89.4	64.3	47
	2013	*	77.3	86.4	83.3	*	83.3	75.0		75.0	88.0	82.2	62.3	45
	2014	100.0	85.7	94.1	91.7	*	100.0	76.5		89.5	92.6	91.3	59.4	46
5	2012	*	81.0	70.0	75.0		57.1	36.4		71.4	81.5	77.1	68.0	48
	2013	100.0	100.0	94.7	100.0		*	100.0		100.0	95.8	97.9	81.5	48
	2014	*	100.0	100.0	100.0		100.0	100.0		100.0	100.0	100.0	78.5	44
6	2012	*	90.0	96.0	100.0		100.0	90.9		93.8	93.8	93.8	63.5	48
	2013	*	90.0	81.0	85.7	*		44.4		88.9	85.7	87.0	57.7	46
	2014												63.1	0
3-6	2012	94.1	87.5	86.6	87.1	*	80.0	71.7		88.2	87.7	88.0	64.8	191
	2013	100.0	86.2	88.2	87.6	*	92.9	68.4		87.7	89.5	88.7	66.7	186
	2014	100.0	87.9	93.3	92.9	*	90.0	77.8		91.9	91.1	91.5	65.6	141

NUMBER TESTED IN GRADES 3-6													
2012	17	88	82	101	2	25	46			85	106	191	32,232
2013	18	87	76	97	4	14	38			81	105	186	32,303
2014	13	66	60	85	2	20	54			62	79	141	31,282

**NUMBER UNSATISFACTORY (Level 1)**

Grade	Year	White	African Amer	Hispanic	Econ Disadv	Special Educ	LEP	At Risk	Migrant	Male	Female	All	District	Number Tested (All Students)
3	2012	*	2	2	4	*	1	3		2	2	4	2,466	48
	2013	0	5	1	4	*	*	5		3	3	6	2,181	47
	2014	*	5	3	4		*	8		3	5	8	2,649	51
4	2012	0	3	2	3		*	2		1	4	5	2,529	47
	2013	*	5	3	4	*	1	2		5	3	8	2,581	45
	2014	0	3	1	2	*	0	4		2	2	4	2,858	46
5	2012	*	4	6	6		3	7		6	5	11	2,665	48
	2013	0	0	1	0		*	0		0	1	1	1,484	48
	2014	*	0	0	0		0	0		0	0	0	1,582	44
6	2012	*	2	1	0		0	1		1	2	3	3,673	48
	2013	*	2	4	4	*		5		2	4	6	4,523	46
	2014												3,679	0
3-6	2012	1	11	11	13	*	5	13		10	13	23	11,333	191
	2013	0	12	9	12	*	1	12		10	11	21	10,769	186
	2014	0	8	4	6	*	2	12		5	7	12	10,768	141

NUMBER TESTED IN GRADES 3-6													
2012	17	88	82	101	2	25	46			85	106	191	32,232
2013	18	87	76	97	4	14	38			81	105	186	32,303
2014	13	66	60	85	2	20	54			62	79	141	31,282

PERCENTAGE ADVANCED (Level 3)

Grade	Year	White	African Amer	Hispanic	Econ Disadv	Special Educ	LEP	At Risk	Migrant	Male	Female	All	District	Number Tested (All Students)
3	2012	*	25.0	9.5	13.3	*	0.0	0.0		28.0	17.4	22.9	12.6	48
	2013	50.0	20.8	28.6	17.4	*	*	7.7		26.3	32.1	29.8	13.6	47
	2014	*	20.8	28.6	24.2		*	6.7		21.7	32.1	27.5	9.6	51
4	2012	33.3	13.0	12.5	10.5		*	0.0		26.1	8.3	17.0	11.2	47
	2013	*	18.2	36.4	29.2	*	66.7	50.0		35.0	24.0	28.9	13.5	45
	2014	57.1	33.3	23.5	33.3	*	14.3	17.6		36.8	33.3	34.8	12.0	46
5	2012	*	9.5	10.0	12.5		0.0	0.0		9.5	11.1	10.4	11.1	48
	2013	66.7	33.3	21.1	27.3		*	12.5		37.5	29.2	33.3	13.3	48
	2014	*	9.5	36.4	21.4		37.5	13.6		25.0	25.0	25.0	11.5	44
6	2012	*	30.0	16.0	21.4		12.5	9.1		18.8	25.0	22.9	8.3	48
	2013	*	15.0	19.0	14.3	*		0.0		27.8	10.7	17.4	11.3	46
	2014												7.1	0
3-6	2012	41.2	19.3	12.2	14.9	*	4.0	2.2		21.2	16.0	18.3	10.5	191
	2013	50.0	21.8	26.3	21.6	*	35.7	15.8		32.1	23.8	27.4	12.7	186
	2014	53.8	21.2	30.0	25.9	*	25.0	13.0		27.4	30.4	29.1	9.8	141

NUMBER TESTED IN GRADE 3-6													
2012	17	88	82	101	2	25	46			85	106	191	32,232
2013	18	87	76	97	4	14	38			81	105	186	32,303
2014	13	66	60	85	2	20	54			62	79	141	31,282

## AVERAGE PERCENTAGE OF ITEMS CORRECT BY REPORTING CATEGORY

Grade	Year	REPORTING CATEGORY		
		1. Understanding Across Genres (GR 3-5) 1. Understanding/Analysis Across Genres (GR 6-8)	2. Understanding/Analysis of Literary Texts	3. Understanding/Analysis of Informational Texts
3	2012	78.5	65.3	74.0
	2013	79.8	72.0	71.4
	2014	80.1	74.0	68.1
4	2012	73.0	72.8	68.8
	2013	81.8	70.5	72.2
	2014	78.3	79.7	72.3
5	2012	73.1	65.7	70.0
	2013	80.0	81.7	76.5
	2014	78.2	78.5	75.7
6	2012	84.8	74.3	75.3
	2013	78.7	76.0	67.6
	2014			
3-6	2012	77.4	69.5	72.0
	2013	80.1	75.1	72.0
	2014	78.9	77.2	71.8

**PERCENTAGE SATISFACTORY (Levels 2 or 3)**

Grade	Year	White	African Amer	Hispanic	Econ Disadv	Special Educ	LEP	At Risk	Migrant	Male	Female	All	District	Number Tested (All Students)
4	2012	100.0	95.7	68.8	78.9		*	50.0		95.7	79.2	87.2	60.6	47
	2013	*	63.6	70.8	73.1	*	83.3	66.7		59.1	76.0	68.1	63.9	47
	2014	71.4	90.5	88.2	87.5	*	100.0	76.5		78.9	92.6	87.0	61.9	46

NUMBER TESTED IN GRADE 4													
2012	6	23	16	19		4	6		23	24	47	7,039	
2013	1	22	24	26	2	6	9		22	25	47	6,771	
2014	7	21	17	24	2	7	17		19	27	46	7,022	

**NUMBER UNSATISFACTORY (Level 1)**

Grade	Year	White	African Amer	Hispanic	Econ Disadv	Special Educ	LEP	At Risk	Migrant	Male	Female	All	District	Number Tested (All Students)
4	2012	0	1	5	4		*	3		1	5	6	2,772	47
	2013	*	8	7	7	*	1	3		9	6	15	2,442	47
	2014	2	2	2	3	*	0	4		4	2	6	2,675	46

NUMBER TESTED IN GRADE 4													
2012	6	23	16	19		4	6		23	24	47	7,039	
2013	1	22	24	26	2	6	9		22	25	47	6,771	
2014	7	21	17	24	2	7	17		19	27	46	7,022	



**PERCENTAGE ADVANCED (Level 3)**

Grade	Year	White	African Amer	Hispanic	Econ Disadv	Special Educ	LEP	At Risk	Migrant	Male	Female	All	District	Number Tested (All Students)
4	2012	33.3	0.0	0.0	0.0		*	0.0		4.3	4.2	4.3	5.1	47
	2013	*	4.5	4.2	0.0	*	0.0	0.0		13.6	0.0	6.4	4.7	47
	2014	0.0	4.8	5.9	4.2	*	0.0	0.0		5.3	3.7	4.3	3.7	46

NUMBER TESTED IN GRADE 4													
2012	6	23	16	19		4	6		23	24	47	7,039	
2013	1	22	24	26	2	6	9		22	25	47	6,771	
2014	7	21	17	24	2	7	17		19	27	46	7,022	

**AVERAGE PERCENTAGE OF ITEMS CORRECT BY REPORTING CATEGORY**

Grade	Year	REPORTING CATEGORY			
		1. Composition <sup>1</sup> GR 4: Personal Narrative GR 7: Expository	1. Composition <sup>1</sup> GR 4: Expository GR 7: Personal Narrative	2. Revision	3. Editing
4	2012	2.4	2.1	74.7	65.3
	2013	4.3	3.9	59.3	66.1
	2014	4.9	4.3	77.1	65.9

<sup>1</sup>Average score points (range 0-8). A STAAR composition is rated twice on a scale of 1 to 4, and the ratings are summed to determine score points for the composition. Score point scale: 0=Non-scorable; 2=Very Limited; 3=between Very Limited and Basic; 4=Basic; 5=between Basic and Satisfactory; 6=Satisfactory; 7=between Satisfactory and Accomplished; 8=Accomplished

**PERCENTAGE SATISFACTORY (Levels 2 or 3)**

Grade	Year	White	African Amer	Hispanic	Econ Disadv	Special Educ	LEP	At Risk	Migrant	Male	Female	All	District	Number Tested (All Students)
3	2012	*	58.3	61.9	56.7	*	66.7	44.4		56.0	69.6	62.5	55.4	48
	2013	87.5	62.5	78.6	69.6	*	*	30.8		73.7	71.4	72.3	57.5	47
	2014	*	79.2	71.4	81.8		*	40.0		82.6	75.0	78.4	59.3	51
4	2012	83.3	47.8	56.3	52.6		*	16.7		65.2	45.8	55.3	53.0	47
	2013	*	68.2	65.2	72.0	*	83.3	75.0		61.9	72.0	67.4	57.5	46
	2014	85.7	66.7	76.5	75.0	*	85.7	47.1		78.9	70.4	73.9	59.0	46
5	2012	*	76.2	80.0	75.0		71.4	54.5		66.7	85.2	77.1	64.1	48
	2013	100.0	95.2	94.7	95.5		*	87.5		95.8	95.8	95.8	81.7	48
	2014	*	90.5	95.5	89.3		87.5	86.4		90.0	95.8	93.2	81.4	44
6	2012	*	90.0	96.0	92.9		87.5	81.8		100.0	90.6	93.8	66.4	48
	2013	*	85.0	76.2	82.1	*		33.3		72.2	89.3	82.6	60.6	46
	2014												64.3	0
3-6	2012	82.4	67.0	75.6	70.3	*	68.0	52.2		69.4	74.5	72.3	59.5	191
	2013	94.4	77.0	77.9	79.6	*	85.7	52.6		76.8	81.9	79.7	64.2	187
	2014	92.3	78.8	81.7	82.4	*	80.0	61.1		83.9	79.7	81.6	65.9	141

NUMBER TESTED IN GRADES 3-6													
2012	17	88	82	101	2	25	38			85	106	191	45,265
2013	18	87	77	98	4	14	38			82	105	187	45,167
2014	13	66	60	85	2	20	54			62	79	141	44,976

**NUMBER UNSATISFACTORY (Level 1)**

Grade	Year	White	African Amer	Hispanic	Econ Disadv	Special Educ	LEP	At Risk	Migrant	Male	Female	All	District	Number Tested (All Students)
3	2012	*	10	8	13	*	2	10		11	7	18	5,287	48
	2013	1	9	3	7	*	*	9		5	8	13	5,086	47
	2014	*	5	6	6		*	9		4	7	11	4,988	51
4	2012	1	12	7	9		*	5		8	13	21	5,511	47
	2013	*	7	8	7	*	1	2		8	7	15	4,919	46
	2014	1	7	4	6	*	1	9		4	8	12	4,803	46
5	2012	*	5	4	6		2	5		7	4	11	4,228	48
	2013	0	1	1	1		*	1		1	1	2	2,035	48
	2014	*	2	1	3		1	3		2	1	3	2,088	44
6	2012	*	2	1	2		1	2		0	3	3	3,327	48
	2013	*	3	5	5	*		6		5	3	8	4,133	46
	2014												3,478	0
3-6	2012	3	29	20	30	*	8	22		26	27	53	18,353	191
	2013	1	20	17	20	*	2	18		19	19	38	16,173	187
	2014	1	14	11	15	*	4	21		10	16	26	15,357	141

NUMBER TESTED IN GRADES 3-6													
2012	17	88	82	101	2	25	38			85	106	191	45,265
2013	18	87	77	98	4	14	38			82	105	187	45,167
2014	13	66	60	85	2	20	54			62	79	141	44,976

**PERCENTAGE ADVANCED (Level 3)**

Grade	Year	White	African Amer	Hispanic	Econ Disadv	Special Educ	LEP	At Risk	Migrant	Male	Female	All	District	Number Tested (All Students)
3	2012	*	4.2	4.8	3.3	*	0.0	0.0		8.0	4.3	6.3	7.9	48
	2013	0.0	12.5	7.1	4.3	*	*	0.0		5.3	10.7	8.5	9.1	47
	2014	*	4.2	0.0	3.0		*	0.0		4.3	0.0	2.0	10.4	51
4	2012	0.0	0.0	6.3	5.3		*	0.0		4.3	0.0	2.1	6.1	47
	2013	*	0.0	4.3	4.0	*	0.0	0.0		9.5	0.0	4.3	9.5	46
	2014	0.0	9.5	5.9	8.3	*	0.0	0.0		10.5	7.4	8.7	14.0	46
5	2012	*	9.5	20.0	12.5		0.0	0.0		14.3	11.1	12.5	10.4	48
	2013	33.3	14.3	21.1	22.7		*	25.0		33.3	8.3	20.8	12.8	48
	2014	*	14.3	22.7	14.3		25.0	9.1		25.0	16.7	20.5	15.7	44
6	2012	*	25.0	20.0	17.9		37.5	27.3		25.0	21.9	22.9	9.8	48
	2013	*	25.0	28.6	28.6	*		11.1		38.9	14.3	23.9	8.5	46
	2014												9.6	0
3-6	2012	11.8	9.1	13.4	9.9	*	12.0	6.5		11.8	10.4	11.0	8.5	191
	2013	16.7	12.6	15.6	15.3	*	14.3	7.9		22.0	8.6	14.4	10.0	187
	2014	7.7	9.1	10.0	8.2	*	10.0	3.7		12.9	7.6	9.9	12.5	141

NUMBER TESTED IN GRADE 3-6													
2012	17	88	82	101	2	25	46			85	106	191	45,265
2013	18	87	77	98	4	14	38			82	105	187	45,167
2014	13	66	60	85	2	20	54			62	79	141	44,976

**AVERAGE PERCENTAGE OF ITEMS CORRECT BY REPORTING CATEGORY**

Grade	Year	REPORTING CATEGORY				
		1. Numbers, Operations, and Quantitative Reasoning	2. Patterns, Relationships, and Algebraic Reasoning	3. Geometry and Spatial Reasoning	4. Measurement	5. Probability and Statistics
3	2012	65.1	66.1	63.9	61.2	49.7
	2013	68.1	67.6	67.6	72.9	63.1
	2014	74.4	70.8	60.6	69.4	63.7
4	2012	62.8	65.6	61.2	55.1	60.0
	2013	63.8	68.8	65.0	64.9	64.3
	2014	68.3	68.8	70.7	69.3	76.5
5	2012	64.5	63.2	66.1	61.5	64.6
	2013	73.1	75.0	71.1	68.8	77.5
	2014	74.9	72.0	72.7	69.3	70.0
6	2012	64.2	76.7	67.2	61.5	72.9
	2013	70.2	68.8	68.5	58.2	66.3
	2014					
3-6	2012	64.2	67.9	64.6	59.8	61.8
	2013	68.9	70.1	68.1	66.2	67.9
	2014	72.5	70.5	67.7	69.3	69.9

**PERCENTAGE SATISFACTORY (Levels 2 or 3)**

Grade	Year	White	African Amer	Hispanic	Econ Disadv	Special Educ	LEP	At Risk	Migrant	Male	Female	All	District	Number Tested (All Students)
5	2012	*	81.0	75.0	75.0		57.1	45.5		85.7	77.8	81.3	58.2	48
	2013	100.0	81.0	68.4	72.7		*	50.0		87.5	70.8	79.2	65.1	48
	2014	*	57.1	65.2	58.6	*	55.6	43.5		71.4	54.2	62.2	61.3	45

NUMBER TESTED IN GRADE 5													
2012	5	21	20	24		7	11		21	27	48	10,697	
2013	6	21	19	22		4	8		24	24	48	10,180	
2014	1	21	23	29	1	9	23		21	24	45	9,073	

**NUMBER UNSATISFACTORY (Level 1)**

Grade	Year	White	African Amer	Hispanic	Econ Disadv	Special Educ	LEP	At Risk	Migrant	Male	Female	All	District	Number Tested (All Students)
5	2012	*	4	5	6		3	6		3	6	9	4476	48
	2013	0	4	6	6		*	4		3	7	10	3551	48
	2014	*	9	8	12	*	4	13		6	11	17	3511	45

NUMBER TESTED IN GRADE 5													
2012	5	21	20	24		7	11		21	27	48	10,697	
2013	6	21	19	22		4	8		24	24	48	10,180	
2014	1	21	23	29	1	9	23		21	24	45	9,073	



**PERCENTAGE ADVANCED (Level 3)**

Grade	Year	White	African Amer	Hispanic	Econ Disadv	Special Educ	LEP	At Risk	Migrant	Male	Female	All	District	Number Tested (All Students)
5	2012	*	9.5	35.0	20.8		28.6	18.2		33.3	14.8	22.9	6.5	48
	2013	50.0	14.3	10.5	13.6		*	0.0		20.8	12.5	16.7	6.6	48
	2014	*	0.0	4.3	3.4	*	0.0	0.0		4.8	0.0	2.2	5.3	45

NUMBER TESTED IN GRADE 5													
2012	5	21	20	24		7	11		21	27	48	10,697	
2013	6	21	19	22		4	8		24	24	48	10,180	
2014	1	21	23	29	1	9	23		21	24	45	9,073	

## AVERAGE PERCENTAGE OF ITEMS CORRECT BY REPORTING CATEGORY

Grade	Year	REPORTING CATEGORY			
		1. Matter and Energy	2. Force, Motion, and Energy	3. Earth and Space	4. Organisms and Environments
5	2012	84.6	80.6	80.4	75.1
	2013	79.2	77.9	67.5	65.0
	2014	64.4	66.2	60.4	66.5

PERCENTAGE AT OR ABOVE THE 40th PERCENTILE on the ITBS

Grade	Year	READING TOTAL (**READING PROFILE TOTAL)				
		At Risk	Not At Risk	All	District	Number Tested (All Students)
K**	2012	66.7	85.0	83.7	62.2	43
	2013	83.3	95.0	93.5	60.8	46
	2014	25.0	88.1	82.6	60.7	46
1	2012	66.7	88.9	87.5	55.4	48
	2013	60.0	76.1	74.5	55.0	51
	2014	50.0	85.0	80.4	47.2	46
2	2012	62.5	100.0	85.7	49.8	42
	2013	38.5	94.6	80.0	50.2	50
	2014	41.7	93.1	69.8	44.4	53
K-2	2012	63.6	90.1	85.7	55.8	90
	2013	60.0	89.6	85.0	56.7	147
	2014	39.5	88.2	78.5	53.1	145
# Tested (GR K-2)	2012	22	111	133	21,034	
	2013	30	163	193	28,878	
	2014	38	153	191	28,063	

Grade	Year	MATHEMATICS TOTAL (**MATHEMATICS)				
		At Risk	Not At Risk	All	District	Number Tested (All Students)
K**	2012	*	87.5	88.4	55.1	43
	2013	66.7	90.0	87.0	55.1	46
	2014	*	81.4	76.6	55.0	47
1	2012	*	84.4	83.3	50.7	48
	2013	50.0	66.0	64.2	52.0	53
	2014	50.0	60.0	58.7	46.0	46
2	2012	56.3	92.3	78.6	57.9	42
	2013	61.5	97.3	88.0	56.2	50
	2014	39.1	93.1	69.2	52.0	52
K-2	2012	63.6	87.4	83.5	54.5	133
	2013	60.0	83.1	79.2	54.4	149
	2014	39.4	76.8	68.3	51.0	145
# Tested (GR K-2)	2012	22	111	133	40,477	
	2013	25	124	149	40,966	
	2014	33	112	145	40,233	

## PERCENTAGE AT OR ABOVE THE 40th PERCENTILE

Grade	Year	White	African Amer	Hispanic	Econ Disadv	Special Educ	LEP	At Risk	Migrant	Male	Female	All	District	Number Tested (All Students)
K**	2012	*	82.6	86.7	94.7		*	*		76.5	88.5	83.7	62.2	43
	2013	100.0	95.0	89.5	90.5		83.3	83.3		100.0	91.2	93.5	60.8	46
	2014	*	83.3	75.0	71.4	*	*	*		83.3	81.8	82.6	60.7	46
1	2012	100.0	82.6	88.9	94.1		*	*		87.0	88.0	87.5	55.4	48
	2013	*	72.4	75.0	72.0		*	*		75.0	74.2	74.5	55.0	51
	2014	*	85.7	76.2	76.0		50.0	50.0		91.7	76.5	80.4	47.2	46
2	2012	100.0	85.7	76.9	73.3	*	*	62.5		80.0	90.9	85.7	49.8	42
	2013	*	70.8	85.0	78.3		*	38.5		82.6	77.8	80.0	50.2	50
	2014	*	70.0	70.6	72.4		33.3	41.7		72.7	67.7	69.8	44.4	53
1-2	2012	100.0	84.1	83.9	84.4	*	71.4	63.2		83.7	89.4	86.7	52.7	90
	2013	100.0	78.1	83.6	79.7		68.8	54.2		83.6	81.5	82.3	55.4	147
	2014	81.8	78.7	74.1	73.2	*	37.5	41.2		81.0	74.7	77.2	50.6	145
# Tested (GR K-2)	2012	13	44	31	32	1	7	19		43	47	90	14,095	
	2013	15	73	55	69		16	24		55	92	147	21,640	
	2014	11	75	54	82	1	16	34		58	87	145	21,214	

\*\*Kindergarten subscore is Reading Profile Total; no Reading Total subscore available.

## NUMBER AT OR ABOVE THE 80th PERCENTILE

Grade	Year	White	African Amer	Hispanic	Econ Disadv	Special Educ	LEP	At Risk	Migrant	Male	Female	All	District	Number Tested (All Students)
K**	2012	*	15	8	13		*	*		9	17	26	2,027	43
	2013	6	11	10	10		0	0		6	21	27	2,108	46
	2014	*	14	6	11	*	*	*		14	9	23	1,938	46
1	2012	6	14	9	10		*	*		15	15	30	1,963	48
	2013	*	13	11	13		*	*		11	16	27	2,017	51
	2014	*	14	11	12		1	1		7	21	28	1,561	46
2	2012	4	5	6	4	*	*	4		6	10	16	1,017	42
	2013	*	7	4	4		*	1		9	7	16	1,045	50
	2014	*	8	6	10		1	2		10	7	17	950	53
1-2	2012	10	19	15	14	*	1	4		21	25	46	2,981	90
	2013	11	31	25	27		3	3		26	44	70	5,171	147
	2014	7	36	23	33	*	2	3		31	37	68	4,449	145
# Tested (GR K-2)	2012	13	44	31	32	1	7	19		43	47	90	14,095	
	2013	15	73	55	69		16	24		55	92	147	21,640	
	2014	11	75	54	82	1	16	34		58	87	145	21,214	

\*\*Kindergarten subscore is Reading Profile Total; no Reading Total subscore available.

## PERCENTAGE AT OR ABOVE THE 40th PERCENTILE

Grade	Year	White	African Amer	Hispanic	Econ Disadv	Special Educ	LEP	At Risk	Migrant	Male	Female	All	District	Number Tested (All Students)
K**	2012	*	87.0	86.7	94.7		*	*		88.2	88.5	88.4	55.1	43
	2013	100.0	85.0	84.2	76.2		66.7	66.7		100.0	82.4	87.0	55.1	46
	2014	*	80.0	68.8	71.4	*	*	*		83.3	69.6	76.6	55.0	47
1	2012	100.0	73.9	88.9	88.2		*	*		87.0	80.0	83.3	50.7	48
	2013	*	66.7	58.8	61.5		50.0	50.0		63.6	64.5	64.2	52.0	53
	2014	*	68.2	45.0	57.7		50.0	50.0		66.7	55.9	58.7	46.0	46
2	2012	100.0	61.9	92.3	80.0	*	*	56.3		85.0	72.7	78.6	57.9	42
	2013	*	83.3	90.0	91.3		*	61.5		91.3	85.2	88.0	56.2	50
	2014	*	63.3	75.0	71.4		*	39.1		77.3	63.3	69.2	52.0	52
K-2	2012	100.0	74.6	89.1	88.2	*	90.0	63.6		86.7	80.8	83.5	54.5	133
	2013	93.3	77.0	78.6	75.7		64.7	60.0		82.5	77.2	79.2	54.4	149
	2014	81.8	70.1	61.5	67.1	*	46.7	39.4		77.6	62.1	68.3	51.0	145
# Tested (GR K-2)	2012	15	67	46	51	1	10	22		60	73	133	40,477	
	2013	15	74	56	70		17	25		57	92	149	40,966	
	2014	11	77	52	82	1	15	33		58	87	145	40,233	

\*\*Kindergarten test is Mathematics; no Mathematics Total score available.

## NUMBER AT OR ABOVE THE 80th PERCENTILE

Grade	Year	White	African Amer	Hispanic	Econ Disadv	Special Educ	LEP	At Risk	Migrant	Male	Female	All	District	Number Tested (All Students)
K**	2012	*	12	5	11		*	*		8	13	21	2,472	43
	2013	6	11	6	7		0	0		4	19	23	2,594	46
	2014	*	13	6	11	*	*	*		14	8	22	2,598	47
1	2012	5	9	4	4		*	*		11	8	19	2,473	48
	2013	*	5	7	8		2	2		4	10	14	2,609	53
	2014	*	7	1	5		0	0		4	7	11	2,166	46
2	2012	3	9	5	7	*	*	2		9	8	17	2,843	42
	2013	*	9	7	9		*	3		13	9	22	2,626	50
	2014	*	7	5	7		*	1		7	7	14	2,408	52
K-2	2012	10	30	14	22	*	2	3		28	29	57	7,788	133
	2013	12	25	20	24		5	5		21	38	59	7,829	149
	2014	8	27	12	23	*	0	1		25	22	47	7,172	145
# Tested (GR K-2)	2012	15	67	46	51	1	10	22		60	73	133	40,477	
	2013	15	74	56	70		17	25		57	92	149	40,966	
	2014	11	77	52	82	1	15	33		58	87	145	40,233	

\*\*Kindergarten test is Mathematics; no Mathematics Total score available.

## PERCENTAGE AT OR ABOVE THE 40th PERCENTILE

Grade	Year	White	African Amer	Hispanic	Econ Disadv	Special Educ	LEP	At Risk	Migrant	Male	Female	All	District	Number Tested (All Students)
1	2012	100.0	78.3	83.3	76.5		*	*		87.0	80.0	83.3	62.5	48
	2013	*	63.3	70.6	65.4		50.0	50.0		77.3	61.3	67.9	63.6	53
	2014	*	81.8	45.0	61.5		66.7	66.7		75.0	61.8	65.2	58.6	46
2	2012	57.1	61.9	92.3	80.0	*	*	50.0		75.0	68.2	71.4	63.6	42
	2013	*	75.0	65.0	73.9		*	61.5		73.9	70.4	72.0	60.6	50
	2014	*	63.3	70.6	72.4		50.0	50.0		68.2	71.0	69.8	59.2	53
1-2	2012	76.9	70.5	87.1	78.1	*	85.7	52.6		81.4	74.5	77.8	63.0	90
	2013	75.0	68.5	67.6	69.4		72.7	57.9		75.6	65.5	69.9	62.1	103
	2014	85.7	71.2	56.8	67.3		58.3	53.3		70.6	66.2	67.7	58.9	99
# Tested (GR 1-2)	2012	13	44	31	32	1	7	19		43	47	90	26,880	
	2013	8	54	37	49		11	19		45	58	103	27,003	
	2014	7	52	37	55		12	30		34	65	99	26,955	



## NUMBER AT OR ABOVE THE 80th PERCENTILE

Grade	Year	White	African Amer	Hispanic	Econ Disadv	Special Educ	LEP	At Risk	Migrant	Male	Female	All	District	Number Tested (All Students)
1	2012	6	13	8	7		*	*		16	11	27	4,060	48
	2013	*	10	8	9		2	2		5	14	19	4,150	53
	2014	*	11	2	7		1	1		5	10	15	3,708	46
2	2012	1	6	5	5	*	*	2		6	6	12	3,820	42
	2013	*	8	4	6		*	2		6	8	14	3,436	50
	2014	*	8	2	5		0	2		4	7	11	3,288	53
1-2	2012	7	19	13	12	*	3	4		22	17	39	7,880	90
	2013	2	18	12	15		3	4		11	22	33	7,586	103
	2014	3	19	4	12		1	3		9	17	26	6,996	99
# Tested (GR 1-2)	2012	13	44	31	32	1	7	19		43	47	90	26,880	
	2013	8	54	37	49		11	19		45	58	103	27,003	
	2014	7	52	37	55		12	30		34	65	99	26,955	

**PERFORMANCE IN 2014**

Grade 2013-14 (N Rated)	Domain:	Listening		Speaking		Writing		Reading		Composite	
	2014 Level	N	%	N	%	N	%	N	%	N	%
1 (6)	Beginning	1	16.7	1	16.7	2	33.3	2	33.3	2	33.3
	Intermediate	2	33.3	1	16.7	0	0.0	0	0.0	0	0.0
	Advanced	2	33.3	2	33.3	3	50.0	2	33.3	2	33.3
	Advanced High	1	16.7	2	33.3	1	16.7	2	33.3	2	33.3
2 (6)	Beginning	0	0.0	0	0.0	3	50.0	0	0.0	0	0.0
	Intermediate	2	33.3	3	50.0	1	16.7	4	66.7	4	66.7
	Advanced	2	33.3	2	33.3	1	16.7	0	0.0	0	0.0
	Advanced High	2	33.3	1	16.7	1	16.7	2	33.3	2	33.3
4 (7)	Beginning	0	0.0	0	0.0	0	0.0	0	0.0	0	0.0
	Intermediate	0	0.0	0	0.0	0	0.0	0	0.0	0	0.0
	Advanced	1	14.3	1	14.3	2	28.6	2	28.6	1	14.3
	Advanced High	6	85.7	6	85.7	5	71.4	5	71.4	6	85.7
5 (9)	Beginning	0	0.0	0	0.0	0	0.0	0	0.0	0	0.0
	Intermediate	0	0.0	0	0.0	0	0.0	0	0.0	0	0.0
	Advanced	3	33.3	3	33.3	5	55.6	0	0.0	0	0.0
	Advanced High	6	66.7	6	66.7	4	44.4	8	100.0	8	100.0
ALL (37)	Beginning	1	2.7	1	2.7	5	13.5	2	5.6	2	5.6
	Intermediate	6	16.2	6	16.2	4	10.8	8	22.2	7	19.4
	Advanced	13	35.1	12	32.4	16	43.2	6	16.7	6	16.7
	Advanced High	17	45.9	18	48.6	12	32.4	20	55.6	21	58.3

**PROGRESSION FROM  
2013 TO 2014**

Number Rated Both Years N (%) Progressed	2014 Level	2013 Level			
		Beg	Int	Adv	Adv High
6 2 (33.3%)	Beginning	2			
	Intermediate	0	0		
	Advanced	0	0	2	
	Advanced High	0	0	2	
6 2 (33.3%)	Beginning	0			
	Intermediate	0	4		
	Advanced	0	0	0	
	Advanced High	0	0	2	
7 6 (85.7%)	Beginning	0			
	Intermediate	0	0		
	Advanced	0	0	1	
	Advanced High	0	0	6	
8 8 (100.0%)	Beginning	0			
	Intermediate	0	0		
	Advanced	0	0	0	
	Advanced High	0	0	8	
32 22 (68.8%)	Beginning	2			
	Intermediate	0	5		
	Advanced	0	1	3	
	Advanced High	0	0	21	

■ Indicates students who progressed at least one level from 2013 to 2014.

**SEMESTER 1 TESTS**

Number Tested	Averages				% Passing		District % Passing	
	% Items Correct	Scale Score	Course Mark	Course Mark (no ACP)	ACP	Course	ACP	Course

**GRADE 1 ART**

18	80.4	86.9			94.4		84.8	
----	------	------	--	--	------	--	------	--

**GRADE 1 MATHEMATICS**

49	87.8	89.2			100.0		88.8	
----	------	------	--	--	-------	--	------	--

**GRADE 1 READING**

49	95.9	96.3			100.0		95.2	
----	------	------	--	--	-------	--	------	--

**GRADE 2 MATHEMATICS**

53	63.7	79.1	90.3		81.1	100.0	80.4	91.8
----	------	------	------	--	------	-------	------	------

**GRADE 2 MUSIC**

26		82.8	95.1		96.2	100.0	64.3	100.0
----	--	------	------	--	------	-------	------	-------

**GRADE 2 READING**

53	68.6	84.0	89.1		88.7	98.1	73.6	87.7
----	------	------	------	--	------	------	------	------

**GRADE 3 LANGUAGE ARTS**

51	61.8	78.0	91.5		78.4	100.0	57.8	91.7
----	------	------	------	--	------	-------	------	------

**GRADE 3 MATHEMATICS**

51	58.7	76.2	88.2		76.5	98.0	51.5	88.5
----	------	------	------	--	------	------	------	------

**GRADE 3 PHYSICAL EDUCATION**

50		87.3	100.0		96.0	100.0	81.1	100.0
----	--	------	-------	--	------	-------	------	-------

**GRADE 3 READING**

51	68.9	79.7	88.8		76.5	98.0	55.3	87.8
----	------	------	------	--	------	------	------	------

**GRADE 3 SCIENCE**

51	53.4	68.9	92.2		54.9	100.0	53.2	96.7
----	------	------	------	--	------	-------	------	------

**SEMESTER 2 TESTS**

Number Tested	Averages				% Passing		District % Passing	
	% Items Correct	Scale Score	Course Mark	Course Mark (no ACP)	ACP	Course	ACP	Course

**GRADE 1 ART**

22		82.6			100.0		85.0	
----	--	------	--	--	-------	--	------	--

**GRADE 1 MATHEMATICS**

39	85.6	86.5			92.3		87.1	
----	------	------	--	--	------	--	------	--

**GRADE 1 READING**

39	88.9	92.1			100.0		79.6	
----	------	------	--	--	-------	--	------	--

**GRADE 2 MATHEMATICS**

44	62.9	77.7	89.2		84.1	100.0	75.6	91.8
----	------	------	------	--	------	-------	------	------

**GRADE 2 MUSIC**

--	--	--	--	--	--	--	--	--

**GRADE 2 READING**

46	70.2	80.1	88.5		80.4	100.0	65.3	86.6
----	------	------	------	--	------	-------	------	------

**GRADE 3 LANGUAGE ARTS**

51	78.0	83.0	89.5		88.2	98.0	63.0	90.0
----	------	------	------	--	------	------	------	------

**GRADE 3 MATHEMATICS**

51	60.7	74.9	87.4		70.6	98.0	55.5	87.5
----	------	------	------	--	------	------	------	------

**GRADE 3 PHYSICAL EDUCATION**

48		90.6	100.0		100.0	100.0	93.6	100.0
----	--	------	-------	--	-------	-------	------	-------

**GRADE 3 READING**

51	71.3	80.9	87.6		78.4	98.0	56.4	86.4
----	------	------	------	--	------	------	------	------

**GRADE 3 SCIENCE**

51	60.2	73.5	89.3		62.7	98.0	56.3	95.5
----	------	------	------	--	------	------	------	------

**SEMESTER 1 TESTS**

Number Tested	Averages				% Passing		District % Passing	
	% Items Correct	Scale Score	Course Mark	Course Mark (no ACP)	ACP	Course	ACP	Course

**GRADE 3 SOCIAL STUDIES**

51	65.9	75.1	92.1		68.6	100.0	61.3	96.1
----	------	------	------	--	------	-------	------	------

**GRADE 4 ART**

24	64.8	81.8	97.8		100.0	100.0	77.4	99.9
----	------	------	------	--	-------	-------	------	------

**GRADE 4 LANGUAGE ARTS**

47	65.0	76.7	86.5		80.9	100.0	57.7	91.1
----	------	------	------	--	------	-------	------	------

**GRADE 4 MATHEMATICS**

47	57.2	76.7	87.4		76.6	100.0	55.0	89.0
----	------	------	------	--	------	-------	------	------

**GRADE 4 READING**

47	67.2	78.1	85.9		89.4	97.3	54.2	89.7
----	------	------	------	--	------	------	------	------

**GRADE 4 SCIENCE**

47	62.6	75.0	88.8		68.1	100.0	52.1	96.4
----	------	------	------	--	------	-------	------	------

**GRADE 4 SOCIAL STUDIES**

47	56.8	74.6	85.9		72.3	95.3	37.8	95.9
----	------	------	------	--	------	------	------	------

**GRADE 5 LANGUAGE ARTS**

44	90.8	90.8	90.9		97.7	100.0	77.2	93.6
----	------	------	------	--	------	-------	------	------

**GRADE 5 MATHEMATICS**

44	54.7	75.3	88.5		75.0	100.0	53.7	89.2
----	------	------	------	--	------	-------	------	------

**GRADE 5 MUSIC**

21		87.8	95.4		95.2	100.0	66.5	99.9
----	--	------	------	--	------	-------	------	------

**GRADE 5 READING**

44	84.2	84.2	88.3		90.9	96.9	62.9	90.8
----	------	------	------	--	------	------	------	------

**SEMESTER 2 TESTS**

Number Tested	Averages				% Passing		District % Passing	
	% Items Correct	Scale Score	Course Mark	Course Mark (no ACP)	ACP	Course	ACP	Course

**GRADE 3 SOCIAL STUDIES**

51	67.4	71.2	89.7		58.8	100.0	50.2	94.5
----	------	------	------	--	------	-------	------	------

**GRADE 4 ART**

22		84.7	96.5		90.9	100.0	50.6	99.9
----	--	------	------	--	------	-------	------	------

**GRADE 4 LANGUAGE ARTS**

46	78.0	80.5	87.0		91.3	95.7	63.8	88.7
----	------	------	------	--	------	------	------	------

**GRADE 4 MATHEMATICS**

46	62.5	76.0	85.9		71.7	97.8	62.3	88.7
----	------	------	------	--	------	------	------	------

**GRADE 4 READING**

46	81.5	83.7	85.3		91.3	97.7	58.4	87.3
----	------	------	------	--	------	------	------	------

**GRADE 4 SCIENCE**

46	67.2	77.6	87.2		73.9	100.0	56.9	94.9
----	------	------	------	--	------	-------	------	------

**GRADE 4 SOCIAL STUDIES**

46	49.7	71.0	86.0		60.9	95.7	38.7	94.8
----	------	------	------	--	------	------	------	------

**GRADE 5 LANGUAGE ARTS**

44	80.0	82.4	89.0		95.5	100.0	69.6	94.1
----	------	------	------	--	------	-------	------	------

**GRADE 5 MATHEMATICS**

44	57.8	75.7	88.3		68.2	100.0	59.7	90.2
----	------	------	------	--	------	-------	------	------

**GRADE 5 MUSIC**

21		93.4	96.4		100.0	100.0	73.2	99.7
----	--	------	------	--	-------	-------	------	------

**GRADE 5 READING**

44	72.6	80.0	88.6		88.6	100.0	63.1	90.0
----	------	------	------	--	------	-------	------	------

**SEMESTER 1 TESTS**

Number Tested	Averages				% Passing		District % Passing	
	% Items Correct	Scale Score	Course Mark	Course Mark (no ACP)	ACP	Course	ACP	Course

**GRADE 5 SCIENCE**

44	48.4	65.6	89.4		31.8	100.0	50.8	94.3
----	------	------	------	--	------	-------	------	------

**GRADE 5 SOCIAL STUDIES**

43	41.5	70.2	86.9		51.2	100.0	48.2	97.0
----	------	------	------	--	------	-------	------	------

**KINDERGARTEN MATHEMATICS**

47	82.8	87.7			89.4		87.6	
----	------	------	--	--	------	--	------	--

**KINDERGARTEN PHYSICAL EDUCATION**

47		99.1			100.0		83.6	
----	--	------	--	--	-------	--	------	--

**KINDERGARTEN READING**

47	90.7	92.1			100.0		90.2	
----	------	------	--	--	-------	--	------	--

**SEMESTER 2 TESTS**

Number Tested	Averages				% Passing		District % Passing	
	% Items Correct	Scale Score	Course Mark	Course Mark (no ACP)	ACP	Course	ACP	Course

**GRADE 5 SCIENCE**

43	73.5	76.6	89.4		76.7	100.0	63.6	93.2
----	------	------	------	--	------	-------	------	------

**GRADE 5 SOCIAL STUDIES**

44	59.0	75.9	86.3		72.7	97.7	53.5	96.0
----	------	------	------	--	------	------	------	------

**KINDERGARTEN MATHEMATICS**

47	71.5	81.0			74.5		82.0	
----	------	------	--	--	------	--	------	--

**KINDERGARTEN PHYSICAL EDUCATION**

47		99.7			100.0		94.5	
----	--	------	--	--	-------	--	------	--

**KINDERGARTEN READING**

47	96.7	96.7			100.0		93.2	
----	------	------	--	--	-------	--	------	--