

NATIONAL STUDENT CLEARINGHOUSE[®]

StudentTracker[®] for High Schools Aggregate Report

Prepared for
DALLAS INDEPENDENT SCHOOL DISTRICT
NCES Code: 4816230

DALLAS INDEPENDENT SCHOOL DISTRICT

Report Run Date: 08/22/2018 04:35 AM

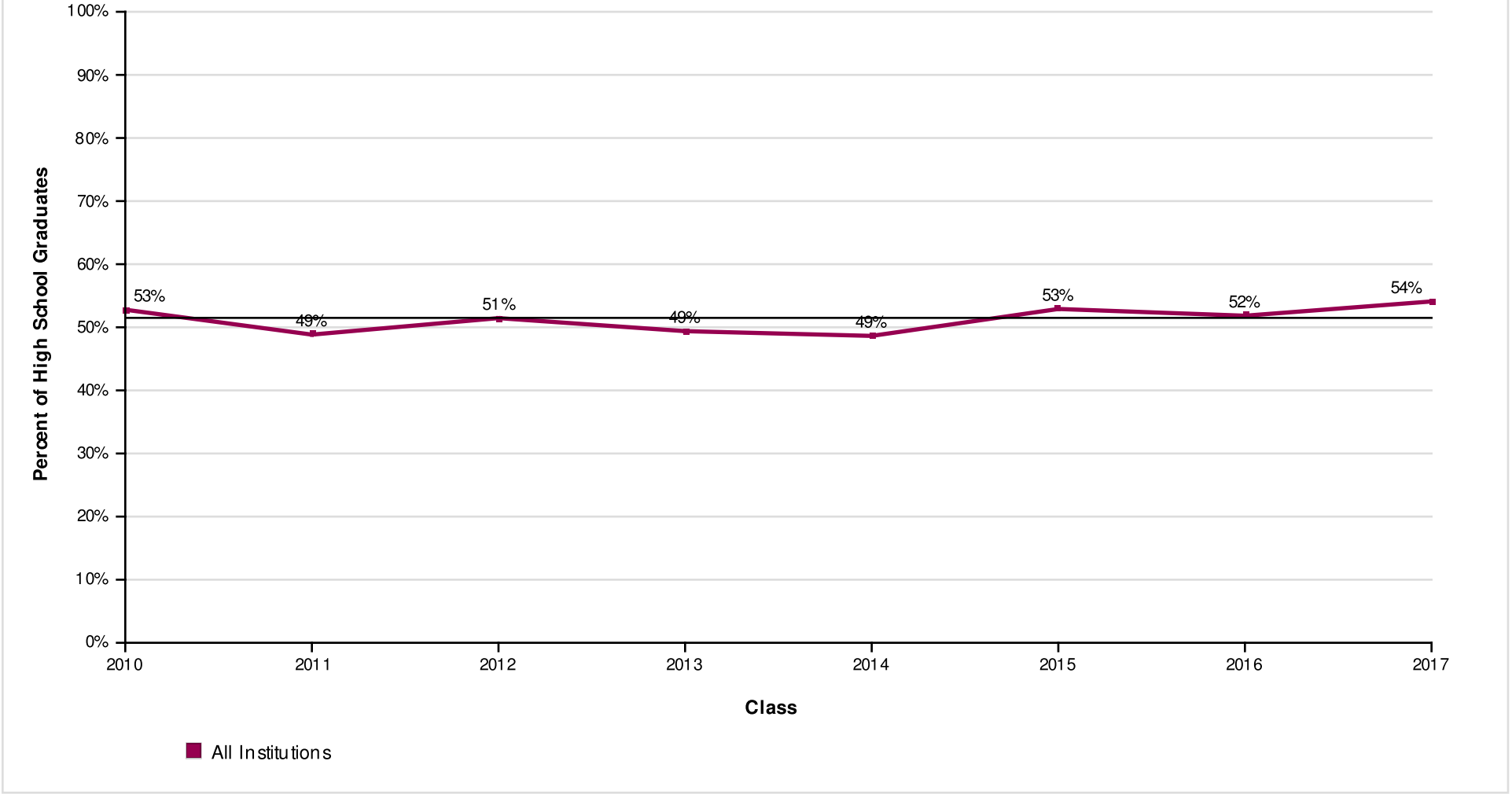
Page 1 of 47

NATIONAL STUDENT
CLEARINGHOUSE[®]

©2012 National Student Clearinghouse. All rights reserved.

Percent of Students Enrolled in College the Fall Immediately After High School

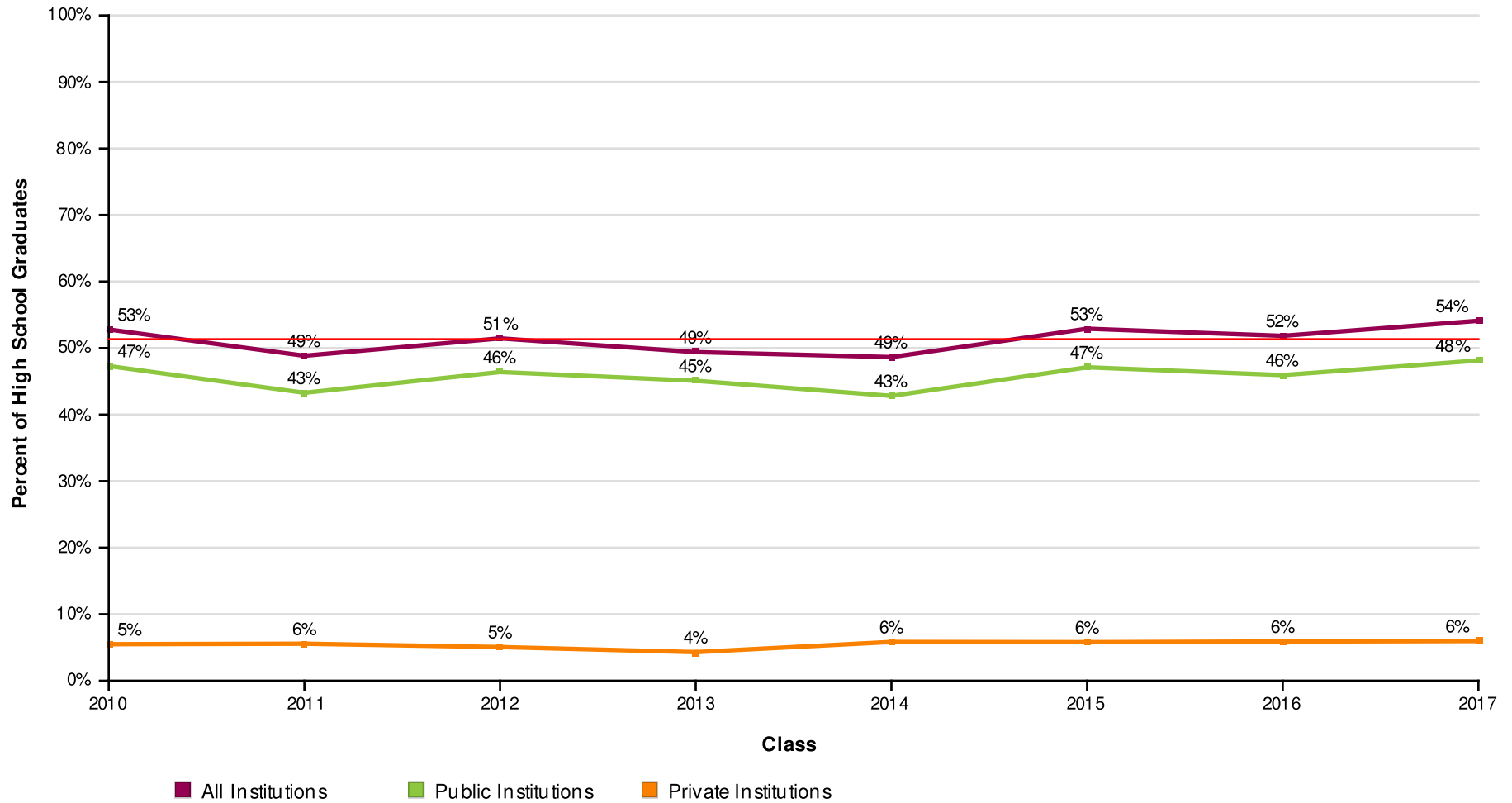
Effective Date = August 16, 2018



AVG = 51%

Percent of Students Enrolled in College the Fall Immediately After High School by Institutional Type

Effective Date = August 16, 2018



AVG = 51%

DALLAS INDEPENDENT SCHOOL DISTRICT

Report Run Date: 08/22/2018 04:35 AM

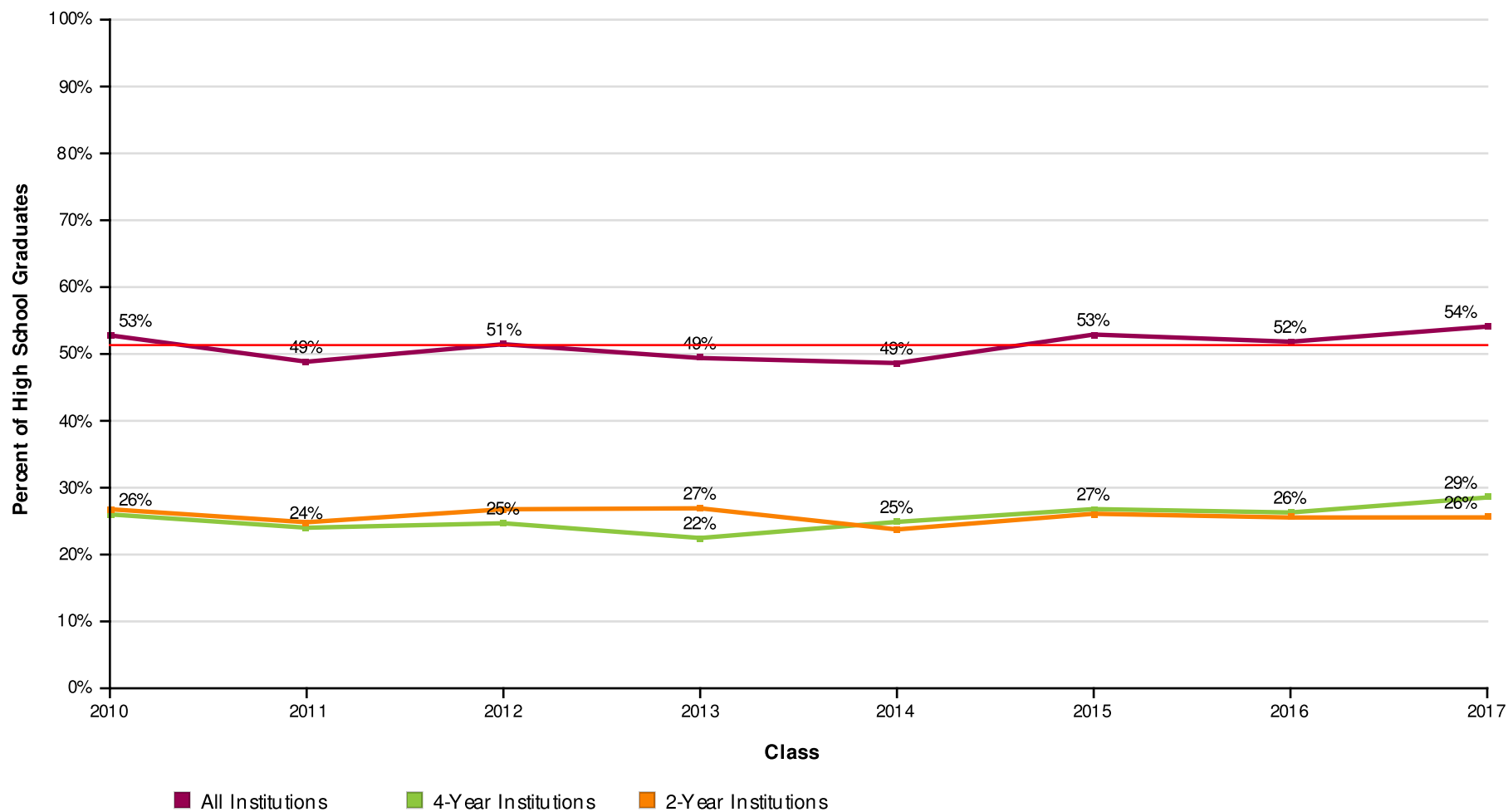
Page 3 of 47

**NATIONAL STUDENT
CLEARINGHOUSE**

©2012 National Student Clearinghouse. All rights reserved.

Percent of Students Enrolled in College the Fall Immediately After High School by Institutional Level

Effective Date = August 16, 2018



DALLAS INDEPENDENT SCHOOL DISTRICT

Report Run Date: 08/22/2018 04:35 AM

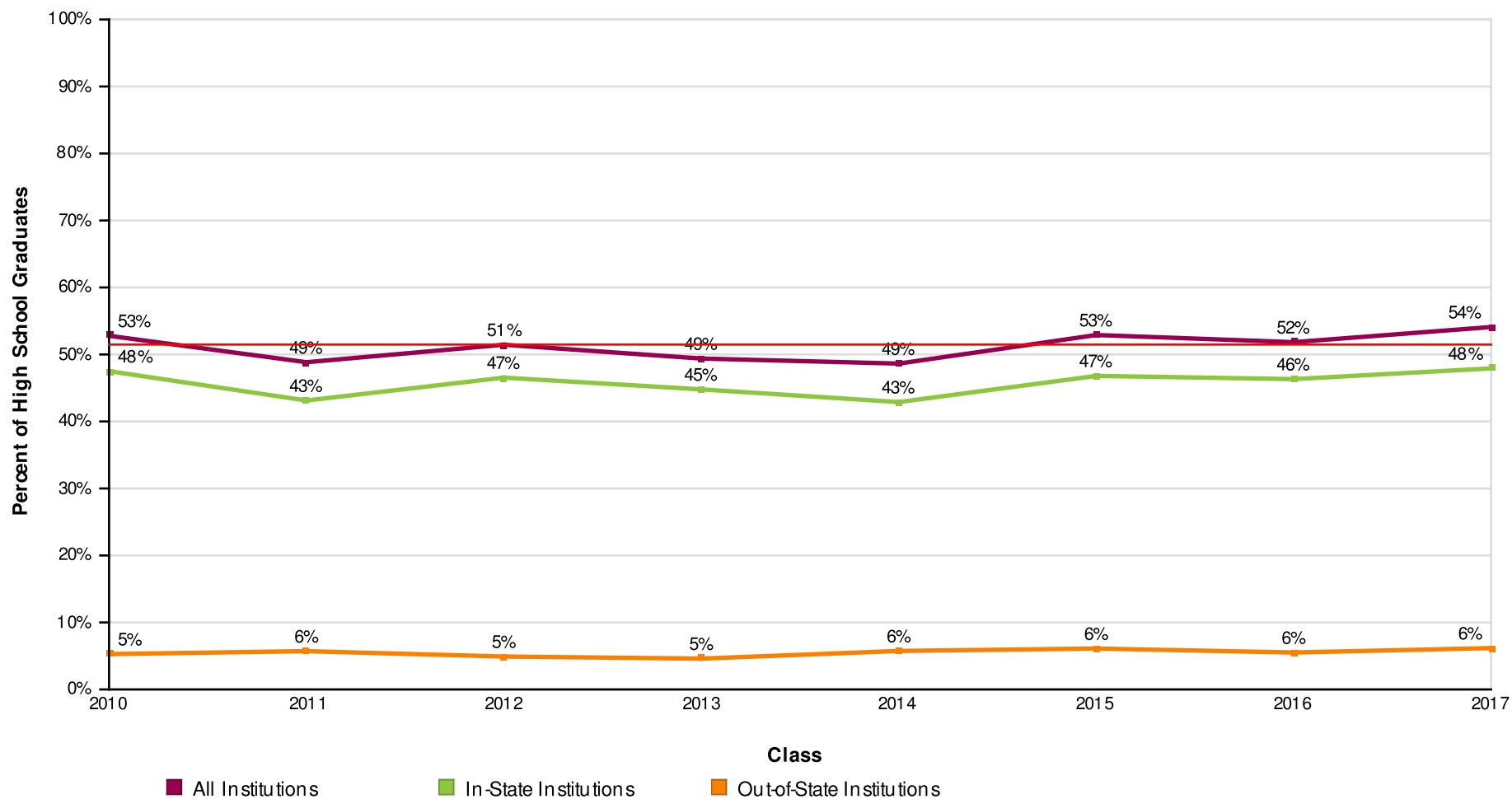
Page 4 of 47

**NATIONAL STUDENT
CLEARINGHOUSE®**

©2012 National Student Clearinghouse. All rights reserved.

Percent of Students Enrolled in College the Fall Immediately After High School by Institutional Location

Effective Date = August 16, 2018



AVG = 51%

DALLAS INDEPENDENT SCHOOL DISTRICT

Report Run Date: 08/22/2018 04:35 AM

Page 5 of 47

**NATIONAL STUDENT
CLEARINGHOUSE**

©2012 National Student Clearinghouse. All rights reserved.

Count of Students Enrolled in College the Fall Immediately After High School

Effective Date = August 16, 2018

Class of	2010	2011	2012	2013	2014	2015	2016	2017
Total in the Class	7,047	7,209	7,208	7,694	7,346	7,421	7,767	7,677
Total Enrolled	3,720	3,521	3,709	3,800	3,573	3,926	4,026	4,153
Total in Public	3,333	3,120	3,344	3,469	3,145	3,496	3,568	3,695
Total in Private	387	401	365	331	428	430	458	458
Total in 4-Year	1,833	1,731	1,779	1,729	1,828	1,989	2,042	2,191
Total in 2-Year	1,887	1,790	1,930	2,071	1,745	1,937	1,984	1,962
Total In-State	3,348	3,109	3,355	3,446	3,151	3,473	3,598	3,679
Total Out-of-State	372	412	354	354	422	453	428	474

DALLAS INDEPENDENT SCHOOL DISTRICT

Report Run Date: 08/22/2018 04:35 AM

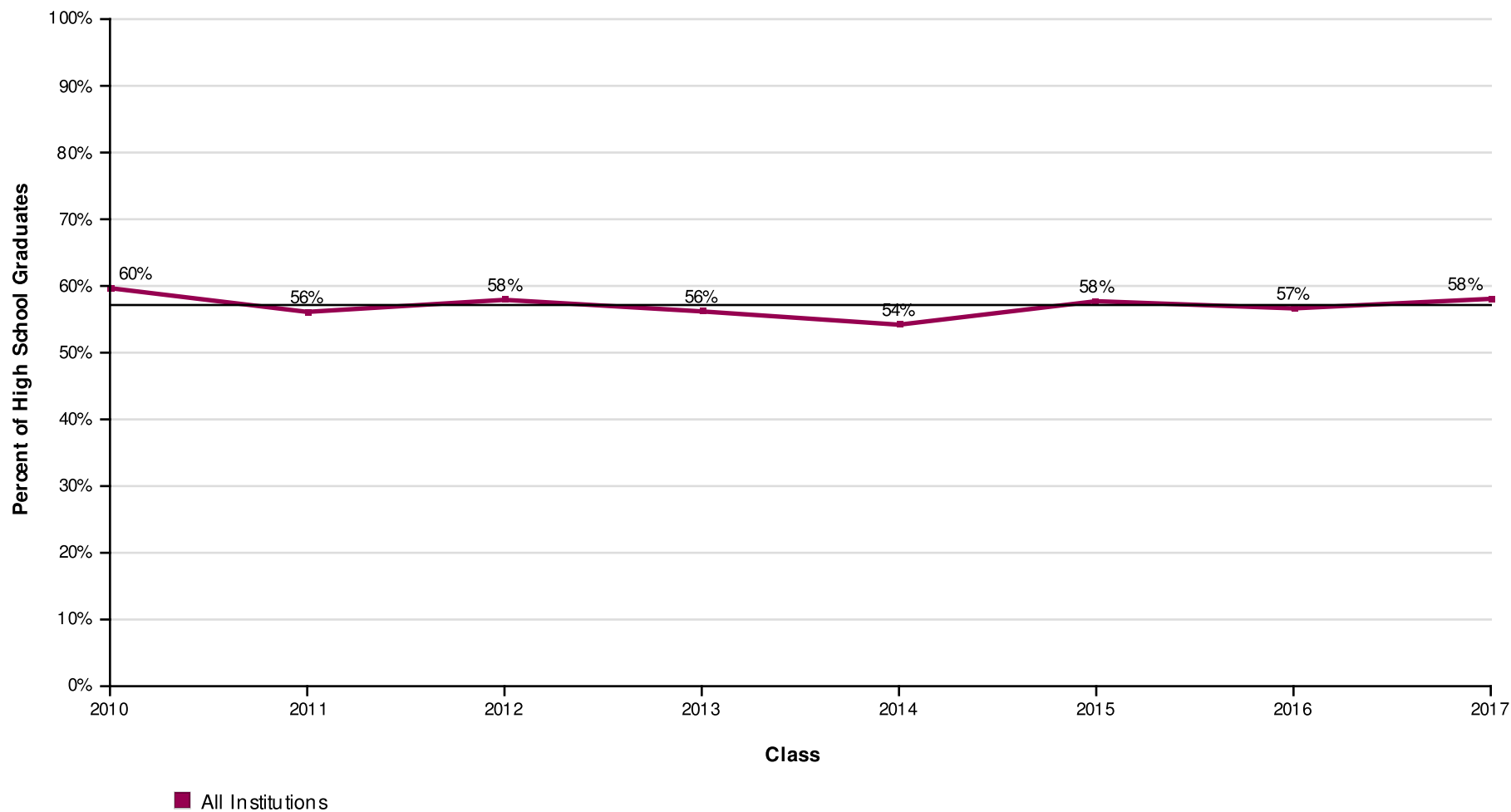
Page 6 of 47

**NATIONAL STUDENT
CLEARINGHOUSE**

©2012 National Student Clearinghouse. All rights reserved.

Percent of Students Enrolled in College at Any Time During the First Year After High School

Effective Date = August 16, 2018



AVG = 57%

DALLAS INDEPENDENT SCHOOL DISTRICT

Report Run Date: 08/22/2018 04:35 AM

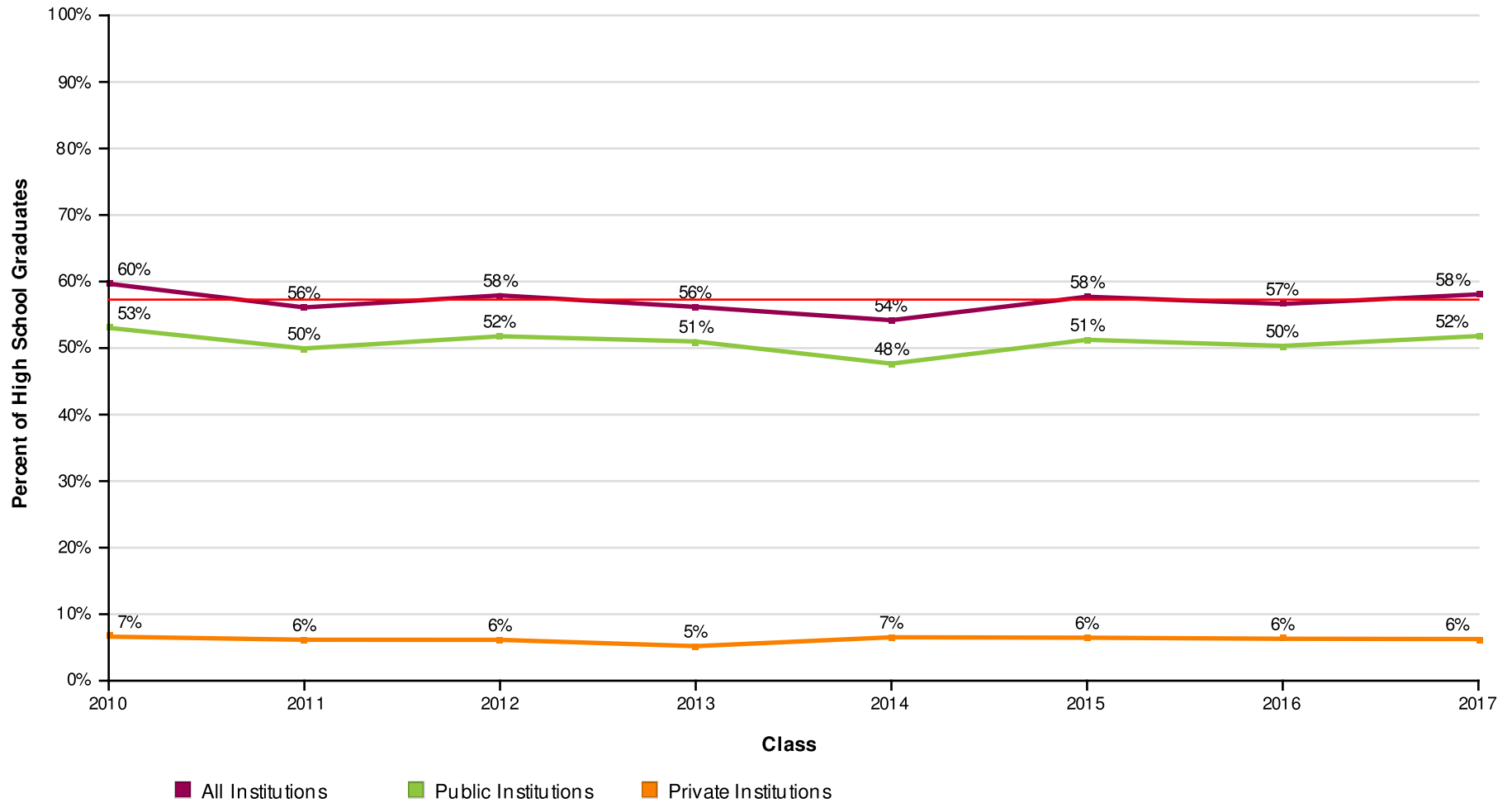
Page 7 of 47

**NATIONAL STUDENT
CLEARINGHOUSE**

©2012 National Student Clearinghouse. All rights reserved.

Percent of Students Enrolled in College at Any Time During the First Year After High School by Institutional Type

Effective Date = August 16, 2018



AVG = 57%

DALLAS INDEPENDENT SCHOOL DISTRICT

Report Run Date: 08/22/2018 04:35 AM

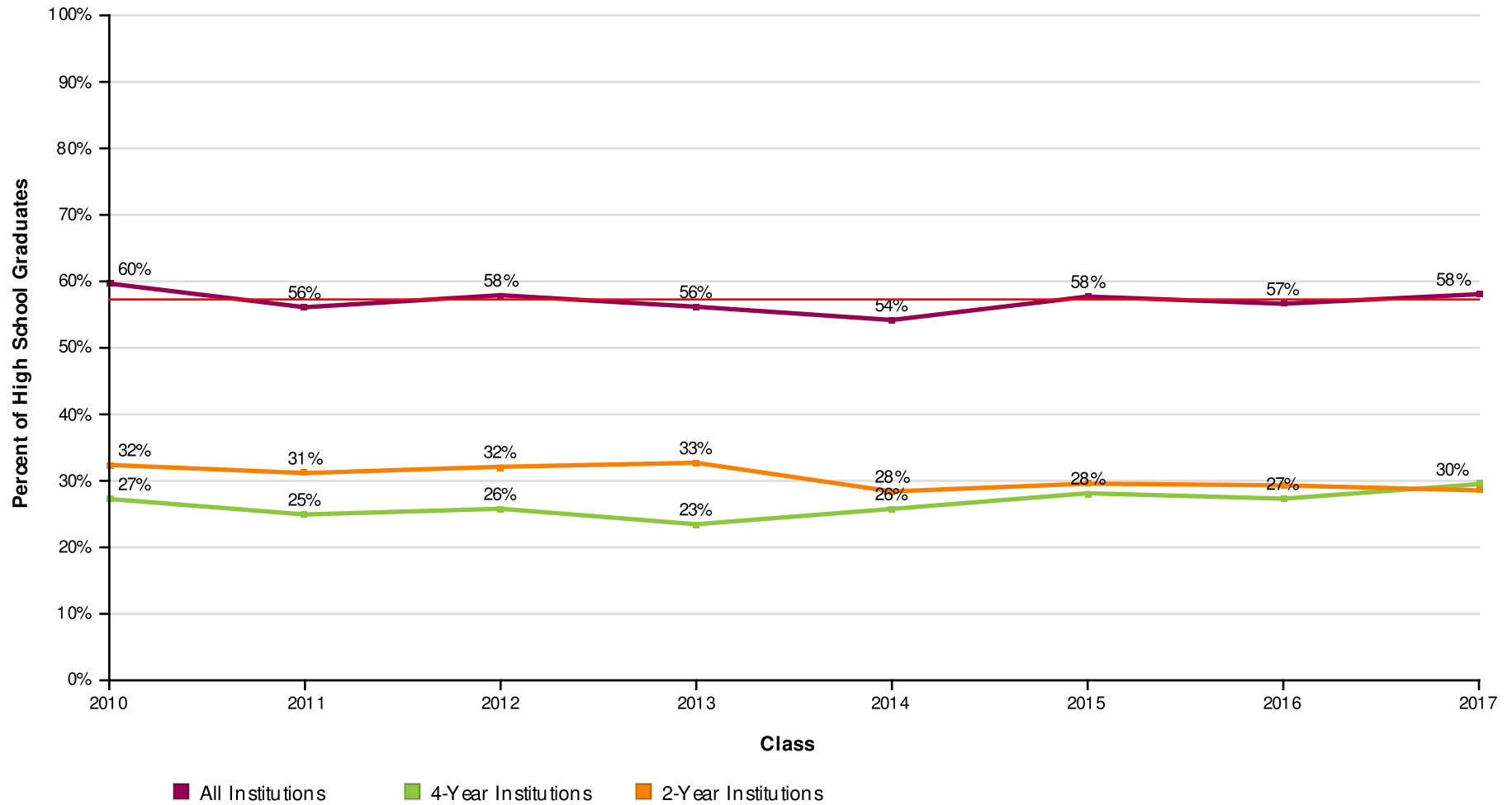
Page 8 of 47

**NATIONAL STUDENT
CLEARINGHOUSE**

©2012 National Student Clearinghouse. All rights reserved.

Percent of Students Enrolled in College at Any Time During the First Year After High School by Institutional Level

Effective Date = August 16, 2018



AVG = 57%

DALLAS INDEPENDENT SCHOOL DISTRICT

Report Run Date: 08/22/2018 04:35 AM

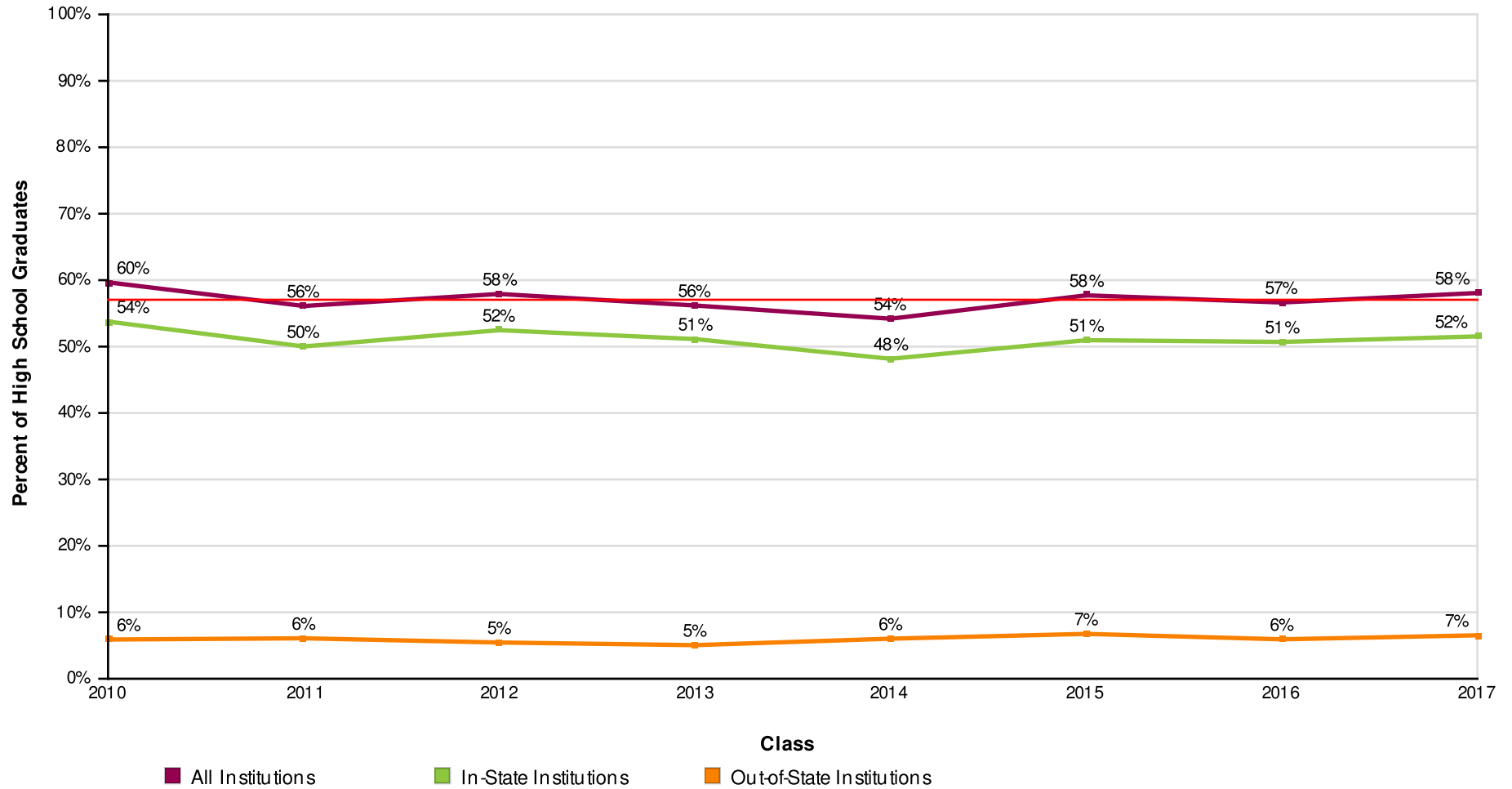
Page 9 of 47

NATIONAL STUDENT
CLEARINGHOUSE

©2012 National Student Clearinghouse. All rights reserved.

Percent of Students Enrolled in College at Any Time During the First Year After High School by Institutional Location

Effective Date = August 16, 2018



AVG = 57%

DALLAS INDEPENDENT SCHOOL DISTRICT

Report Run Date: 08/22/2018 04:35 AM

Page 10 of 47

NATIONAL STUDENT
CLEARINGHOUSE

©2012 National Student Clearinghouse. All rights reserved.

Count of Students Enrolled in College at Any Time During the First Year After High School

Effective Date = August 16, 2018

Class of	2010	2011	2012	2013	2014	2015	2016	2017
Total in the Class	7,047	7,209	7,208	7,694	7,346	7,421	7,767	7,677
Total Enrolled	4,205	4,045	4,175	4,323	3,981	4,283	4,399	4,458
Total in Public	3,738	3,601	3,732	3,923	3,501	3,803	3,909	3,977
Total in Private	467	444	443	400	480	480	490	481
Total in 4-Year	1,922	1,798	1,860	1,806	1,894	2,088	2,122	2,265
Total in 2-Year	2,283	2,247	2,315	2,517	2,087	2,195	2,277	2,193
Total In-State	3,789	3,606	3,782	3,934	3,538	3,782	3,938	3,956
Total Out-Of-State	416	439	393	389	443	501	461	502

DALLAS INDEPENDENT SCHOOL DISTRICT

Report Run Date: 08/22/2018 04:35 AM

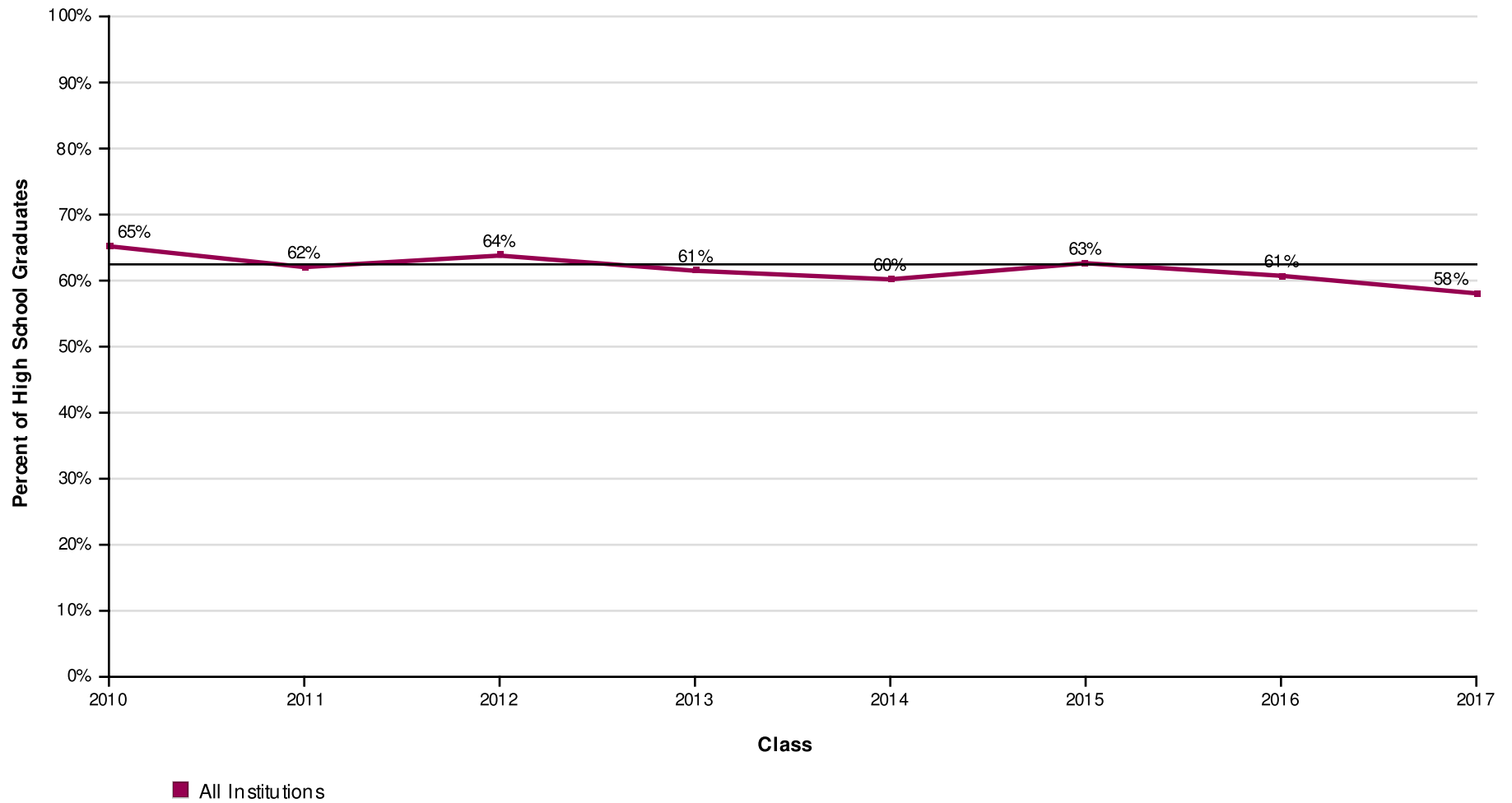
Page 11 of 47

**NATIONAL STUDENT
CLEARINGHOUSE**

©2012 National Student Clearinghouse. All rights reserved.

Percent of Students Enrolled in College at Any Time During the First Two Years After High School

Effective Date = August 16, 2018



AVG = 62%

DALLAS INDEPENDENT SCHOOL DISTRICT

Report Run Date: 08/22/2018 04:35 AM

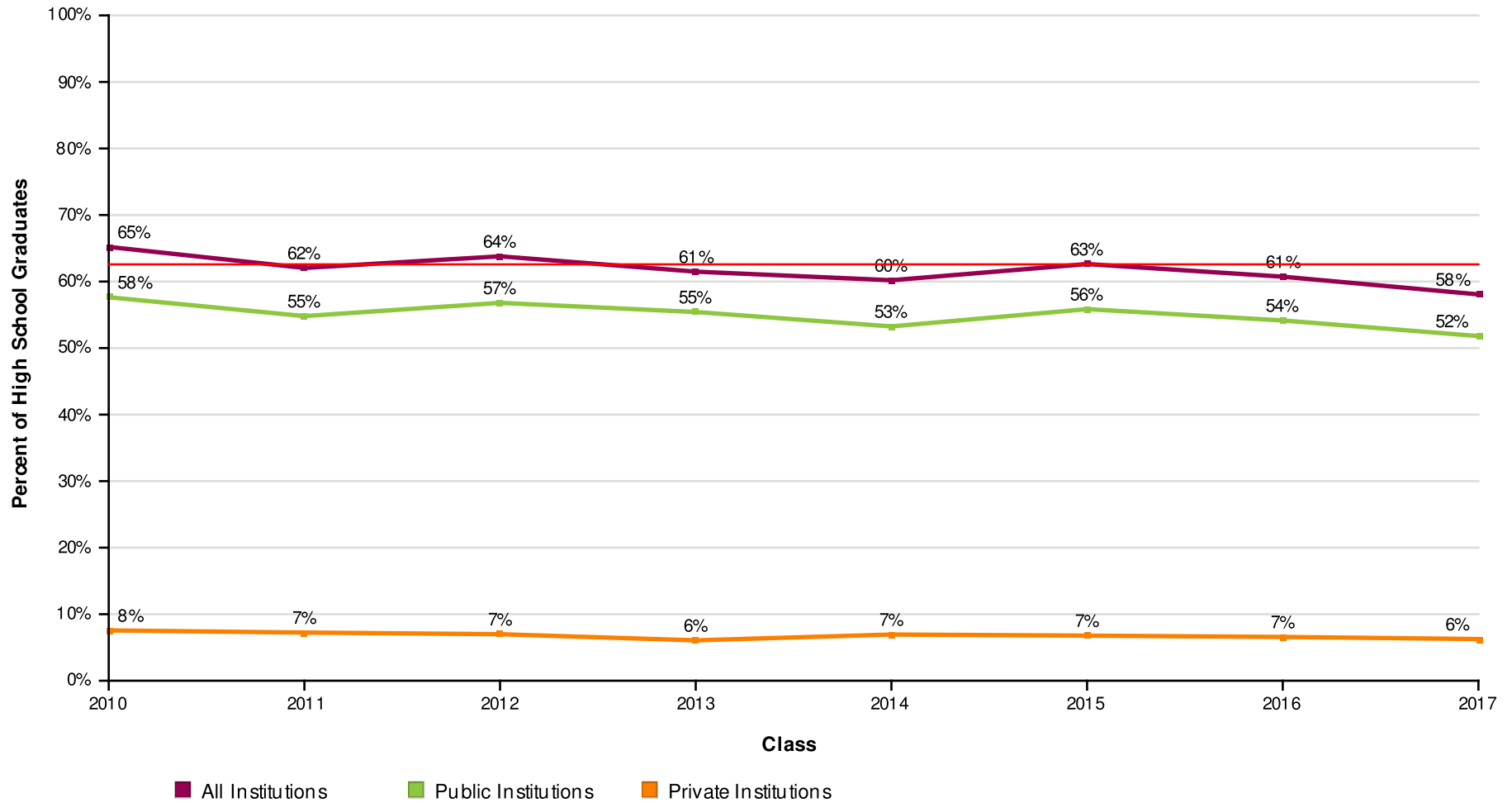
Page 12 of 47

**NATIONAL STUDENT
CLEARINGHOUSE**

©2012 National Student Clearinghouse. All rights reserved.

Percent of Students Enrolled in College at Any Time During the First Two Years After High School by Institutional Type

Effective Date = August 16, 2018



AVG = 62%

DALLAS INDEPENDENT SCHOOL DISTRICT

Report Run Date: 08/22/2018 04:35 AM

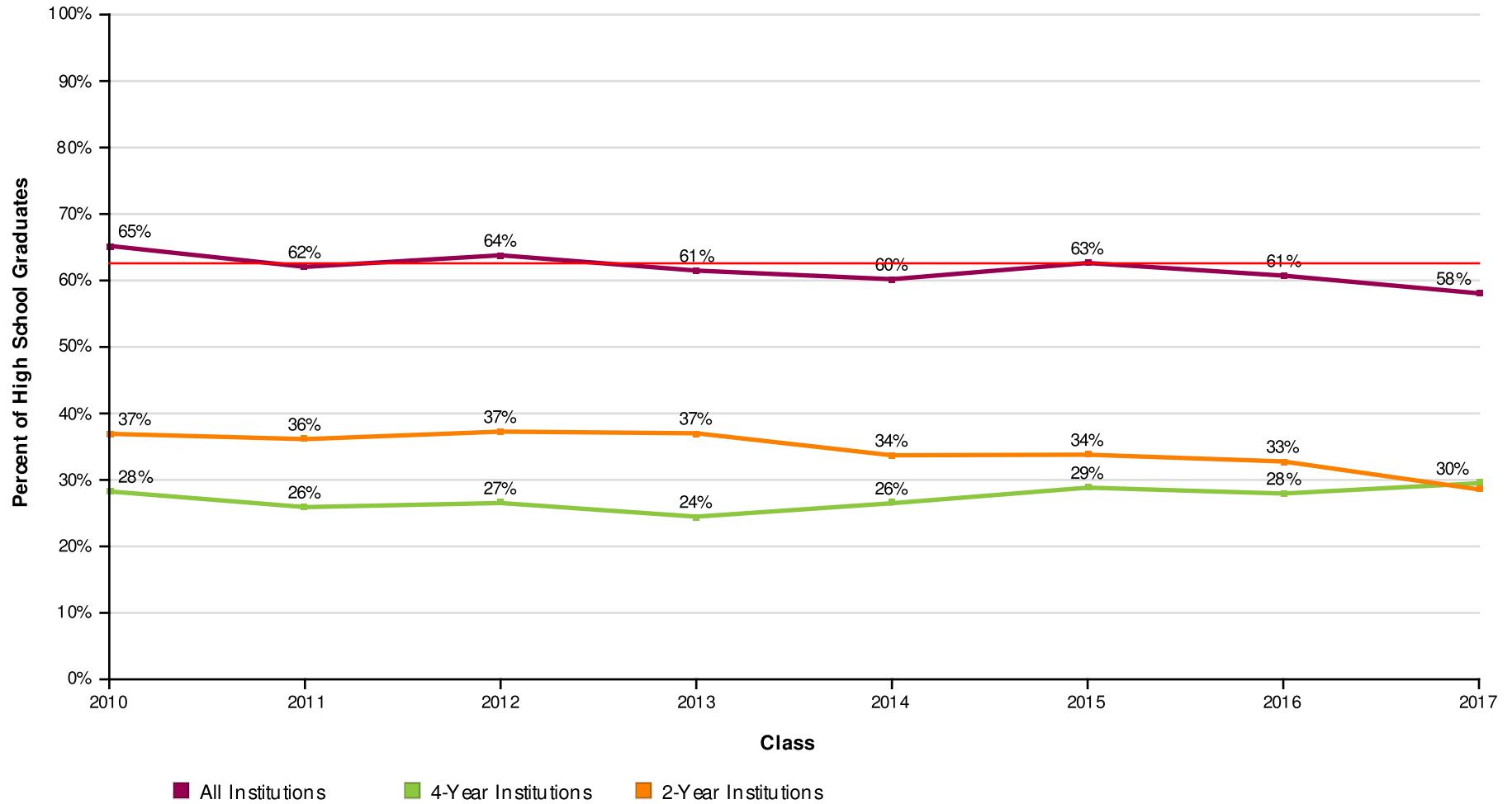
Page 13 of 47

NATIONAL STUDENT
CLEARINGHOUSE

©2012 National Student Clearinghouse. All rights reserved.

Percent of Students Enrolled in College at Any Time During the First Two Years After High School by Institutional Level

Effective Date = August 16, 2018



AVG = 62%

DALLAS INDEPENDENT SCHOOL DISTRICT

Report Run Date: 08/22/2018 04:35 AM

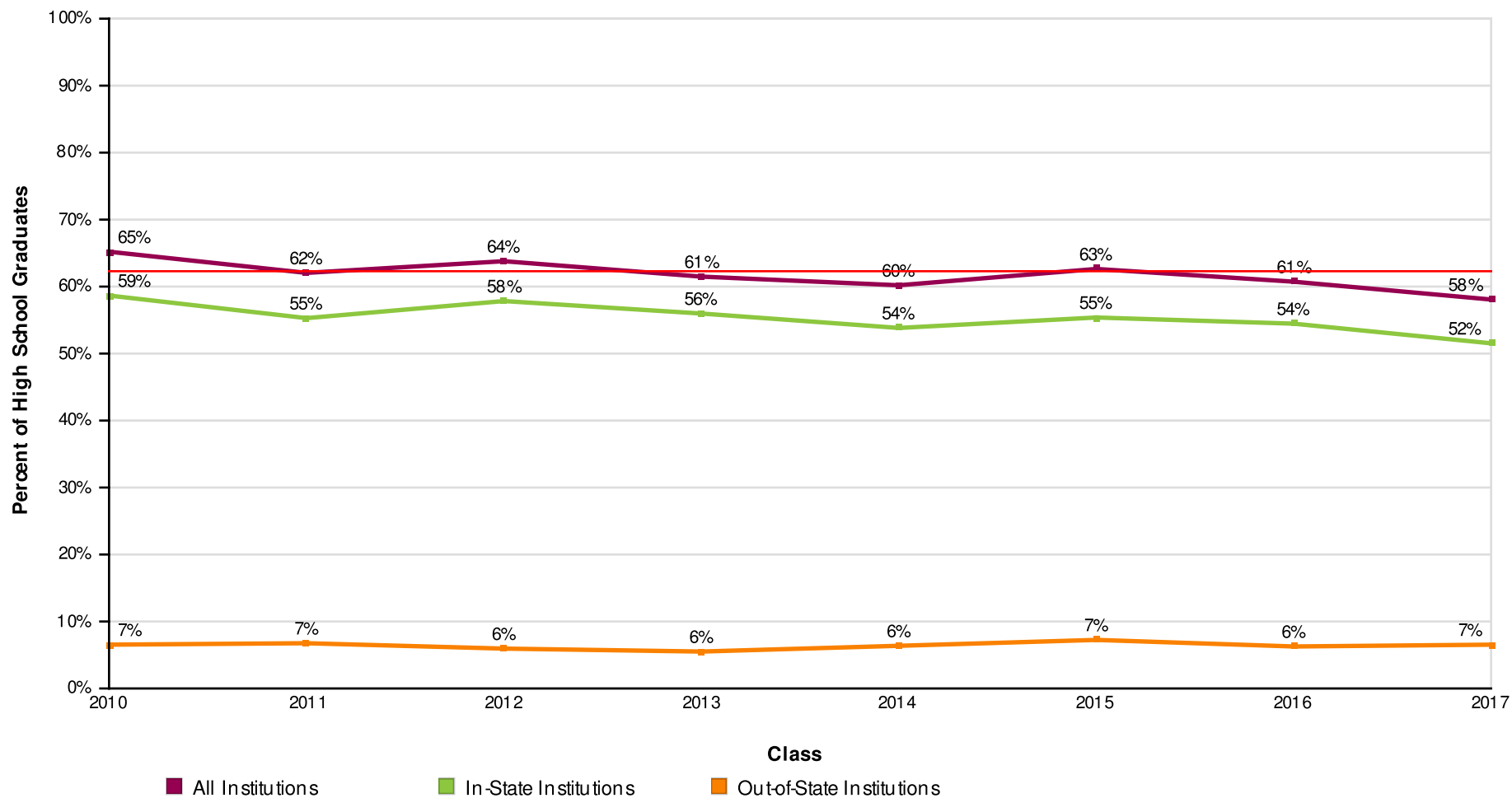
Page 14 of 47

NATIONAL STUDENT
CLEARINGHOUSE

©2012 National Student Clearinghouse. All rights reserved.

Percent of Students Enrolled in College at Any Time During the First Two Years After High School by Institutional Location

Effective Date = August 16, 2018



AVG = 62%

DALLAS INDEPENDENT SCHOOL DISTRICT

Report Run Date: 08/22/2018 04:35 AM

Page 15 of 47

NATIONAL STUDENT
CLEARINGHOUSE

©2012 National Student Clearinghouse. All rights reserved.

Count of Students Enrolled in College at Any Time During the First Two Years After High School

Effective Date = August 16, 2018

Class of	2010	2011	2012	2013	2014	2015	2016	2017
Total in the Class	7,047	7,209	7,208	7,694	7,346	7,421	7,767	7,677
Total Enrolled	4,595	4,473	4,598	4,731	4,422	4,648	4,717	4,458
Total in Public	4,062	3,951	4,094	4,264	3,912	4,145	4,206	3,977
Total in Private	533	522	504	467	510	503	511	481
Total in 4-Year	1,992	1,868	1,912	1,883	1,946	2,140	2,171	2,265
Total in 2-Year	2,603	2,605	2,686	2,848	2,476	2,508	2,546	2,193
Total In-State	4,134	3,986	4,169	4,307	3,954	4,110	4,230	3,956
Total Out-of-State	461	487	429	424	468	538	487	502

DALLAS INDEPENDENT SCHOOL DISTRICT

Report Run Date: 08/22/2018 04:35 AM

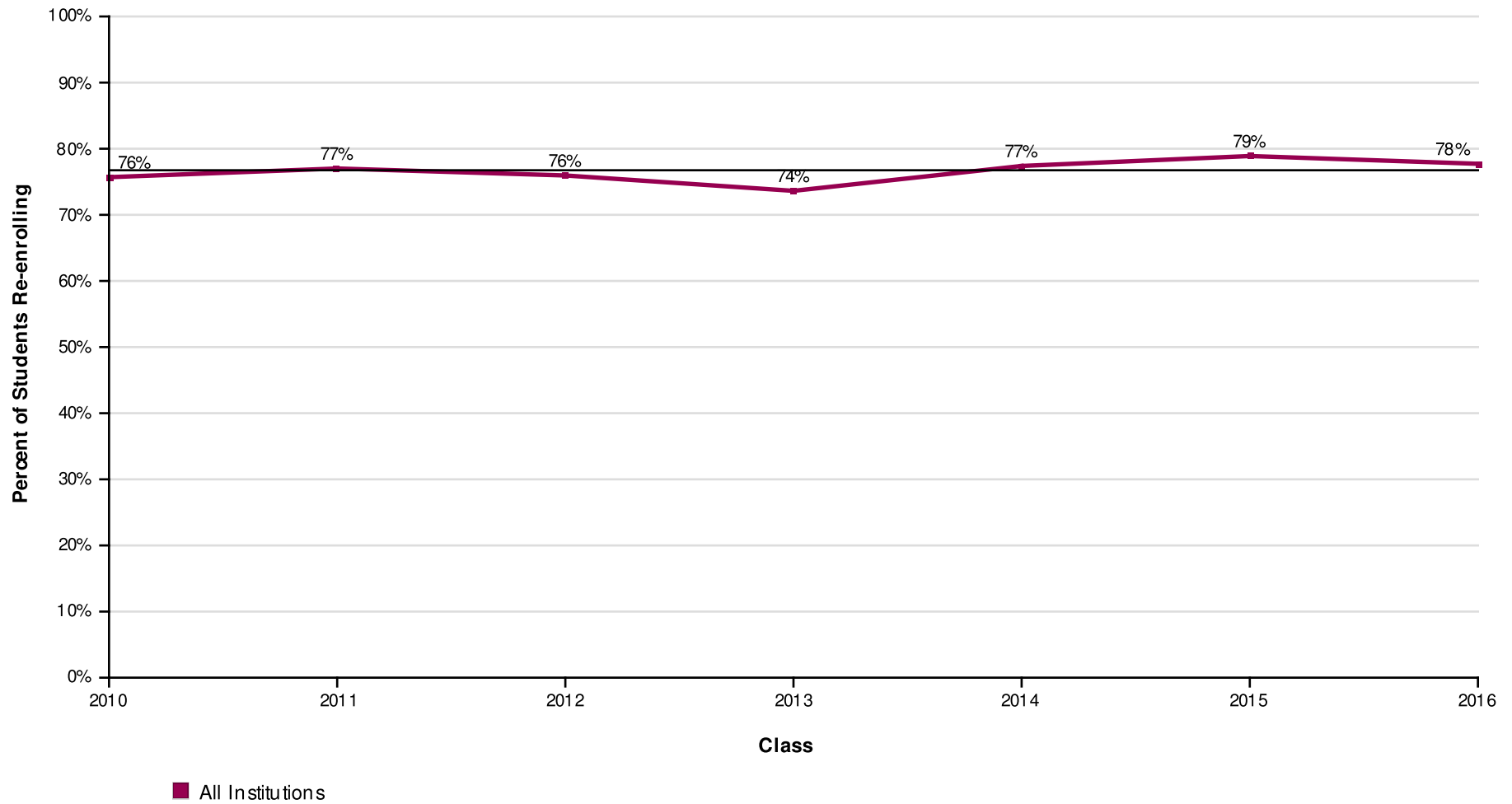
Page 16 of 47

**NATIONAL STUDENT
CLEARINGHOUSE**

©2012 National Student Clearinghouse. All rights reserved.

Percent of Students Enrolled in College the First Year After High School Who Returned for a Second Year (Freshman to Sophomore Persistence)

Effective Date = August 16, 2018



AVG = 77%

DALLAS INDEPENDENT SCHOOL DISTRICT

Report Run Date: 08/22/2018 04:35 AM

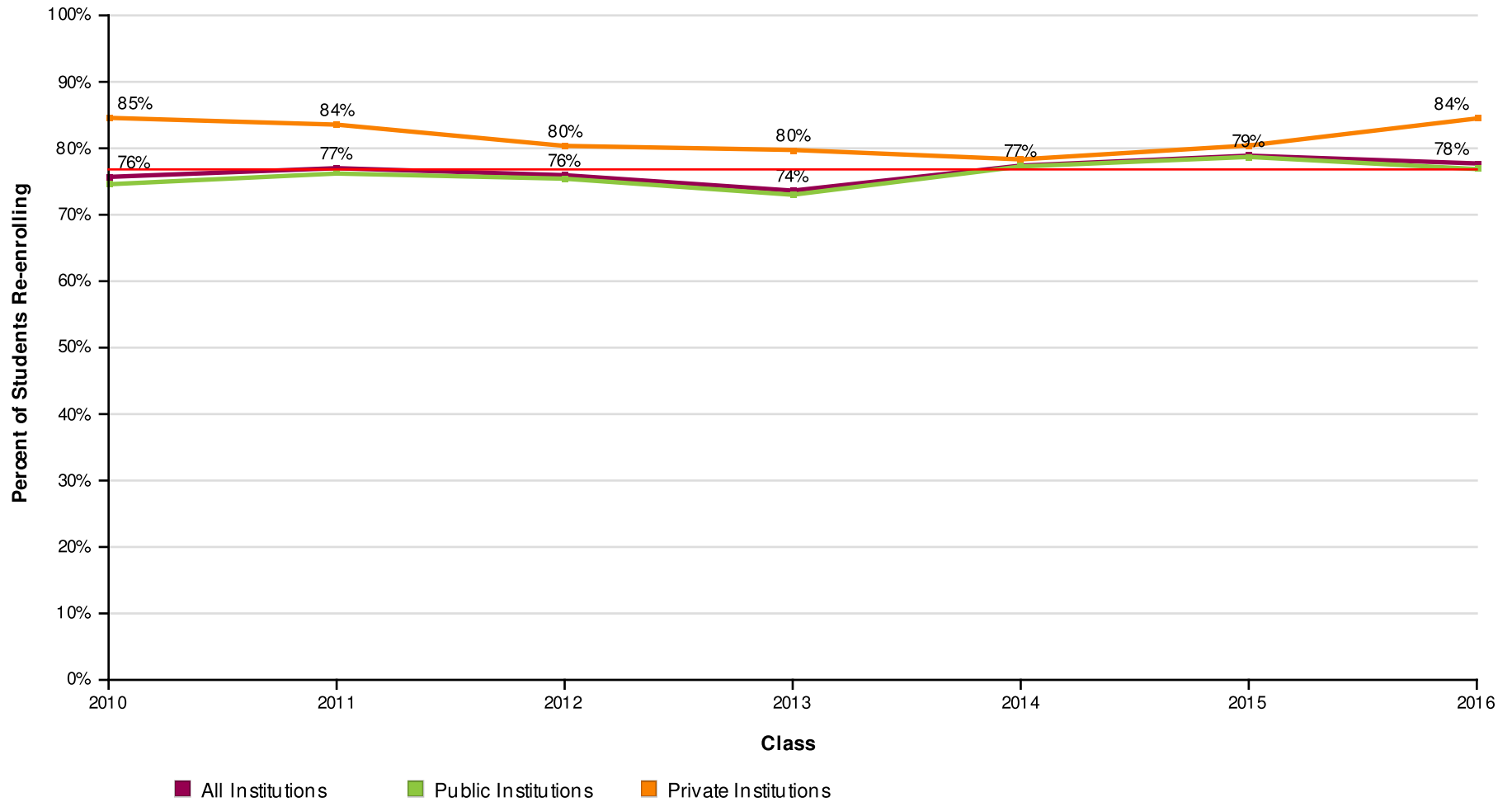
Page 17 of 47

**NATIONAL STUDENT
CLEARINGHOUSE**

©2012 National Student Clearinghouse. All rights reserved.

Percent of Students Enrolled in College the First Year After High School Who Returned for a Second Year (Freshman to Sophomore Persistence) by Institutional Type

Effective Date = August 16, 2018



AVG = 77%

DALLAS INDEPENDENT SCHOOL DISTRICT

Report Run Date: 08/22/2018 04:35 AM

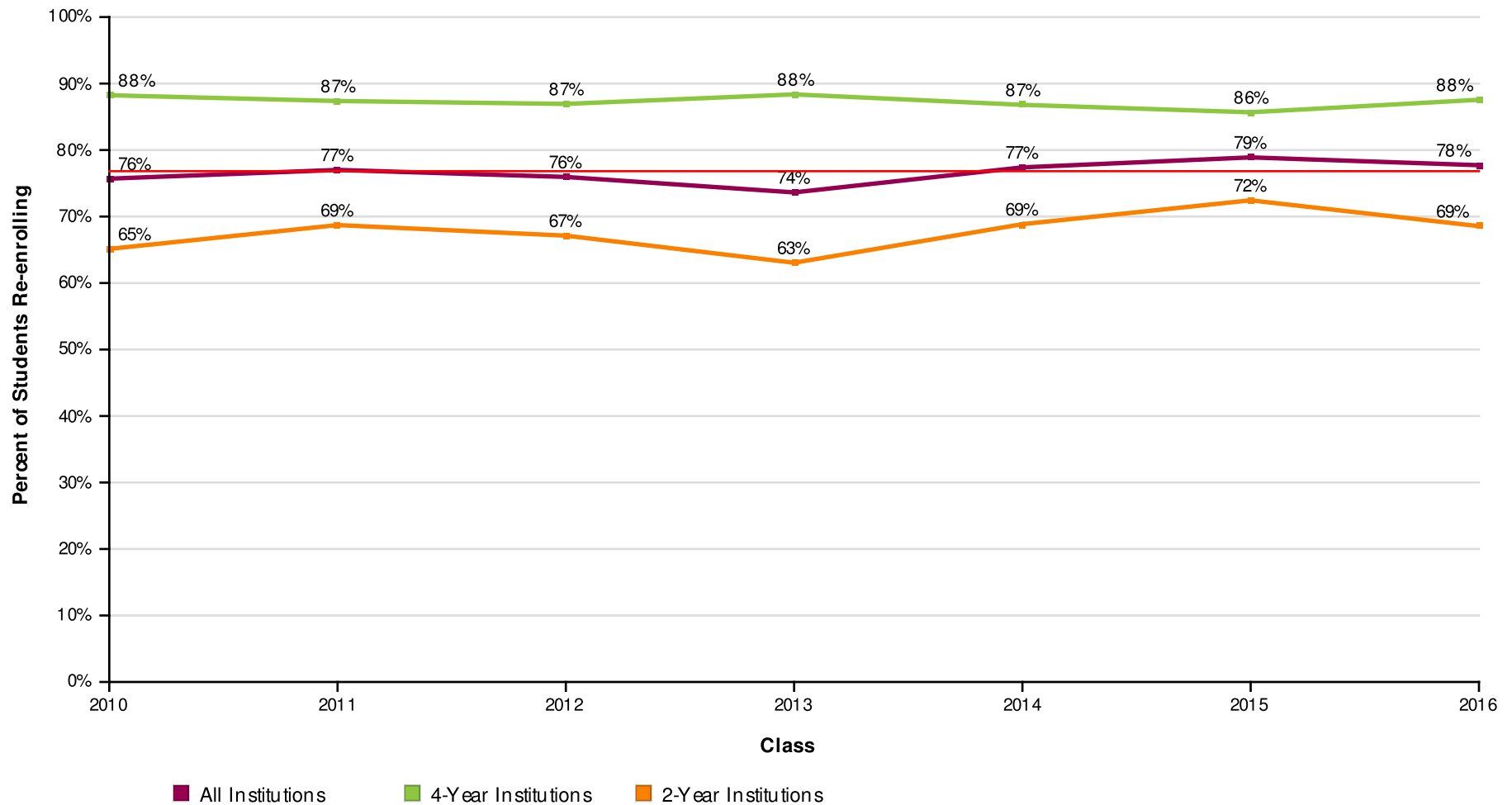
Page 18 of 47

NATIONAL STUDENT
CLEARINGHOUSE

©2012 National Student Clearinghouse. All rights reserved.

Percent of Students Enrolled in College the First Year After High School Who Returned for a Second Year (Freshman to Sophomore Persistence) by Institutional Level

Effective Date = August 16, 2018



AVG = 77%

DALLAS INDEPENDENT SCHOOL DISTRICT

Report Run Date: 08/22/2018 04:35 AM

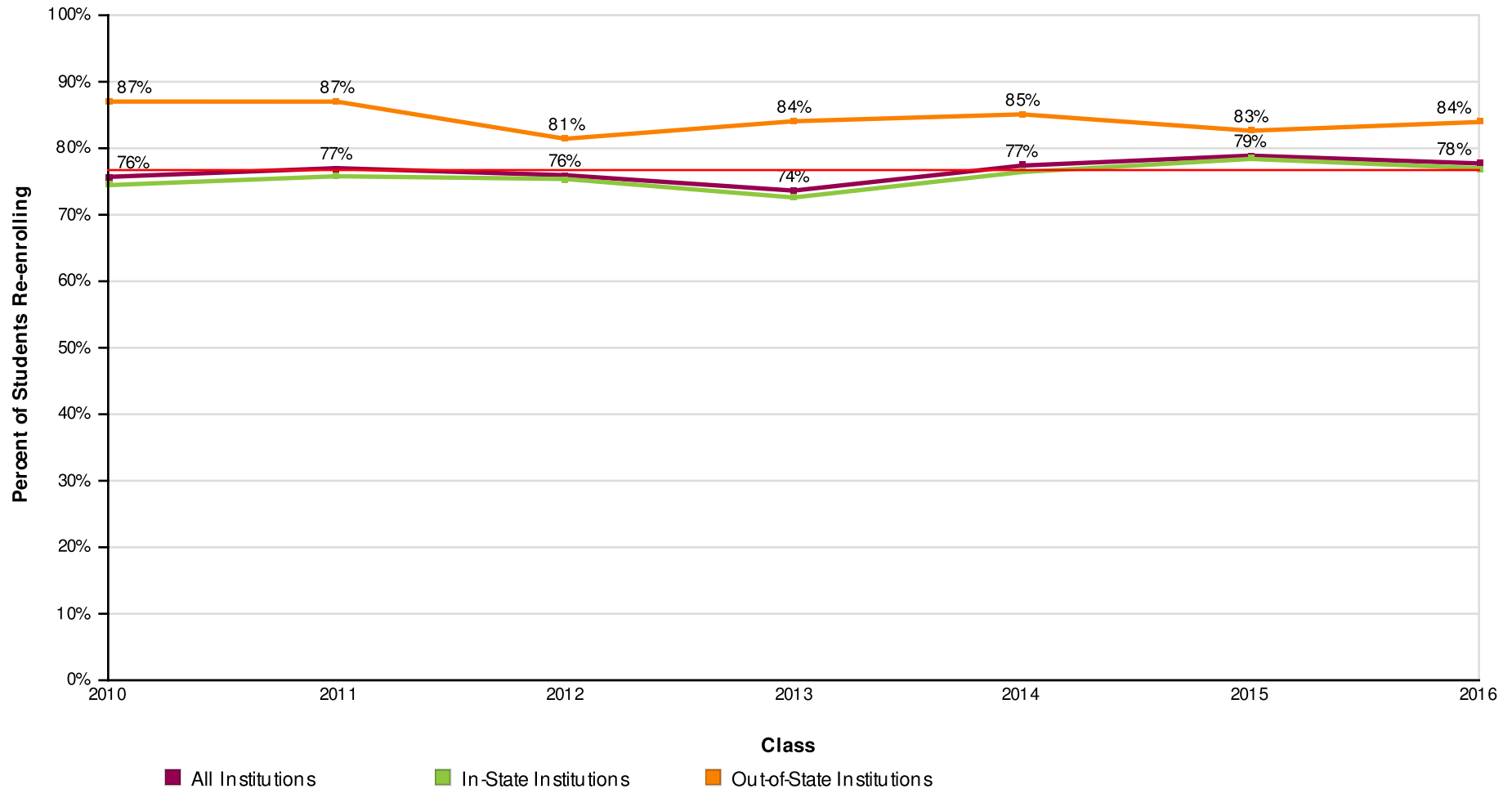
Page 19 of 47

NATIONAL STUDENT
CLEARINGHOUSE

©2012 National Student Clearinghouse. All rights reserved.

Percent of Students Enrolled in College the First Year After High School Who Returned for a Second Year (Freshman to Sophomore Persistence) by Institutional Location

Effective Date = August 16, 2018



AVG = 77%

DALLAS INDEPENDENT SCHOOL DISTRICT

Report Run Date: 08/22/2018 04:35 AM

Page 20 of 47

NATIONAL STUDENT
CLEARINGHOUSE

©2012 National Student Clearinghouse. All rights reserved.

**Count of Students Enrolled in College the First Year After High School Who Returned
for a Second Year (Freshman to Sophomore Persistence)**

Effective Date = August 16, 2018

Class of	2010	2011	2012	2013	2014	2015	2016
Total in the Class	7,047	7,209	7,208	7,694	7,346	7,421	7,767
Enrolled Anywhere 1st Year	4,205	4,045	4,175	4,323	3,981	4,283	4,399
Enrolled Anywhere 2nd Year	3,183	3,115	3,171	3,183	3,081	3,379	3,419
In Public 1st Year	3,738	3,601	3,732	3,923	3,501	3,803	3,909
Enrolled Anywhere 2nd Year	2,788	2,744	2,815	2,864	2,705	2,993	3,005
In Private 1st Year	467	444	443	400	480	480	490
Enrolled Anywhere 2nd Year	395	371	356	319	376	386	414
In 4-Year 1st Year	1,922	1,798	1,860	1,806	1,894	2,088	2,122
Enrolled Anywhere 2nd Year	1,696	1,571	1,617	1,596	1,644	1,789	1,858
In 2-Year 1st Year	2,283	2,247	2,315	2,517	2,087	2,195	2,277
Enrolled Anywhere 2nd Year	1,487	1,544	1,554	1,587	1,437	1,590	1,561
In-State 1st Year	3,789	3,606	3,782	3,934	3,538	3,782	3,938
Enrolled Anywhere 2nd Year	2,821	2,733	2,851	2,856	2,704	2,965	3,032
Out-of-State 1st Year	416	439	393	389	443	501	461
Enrolled Anywhere 2nd Year	362	382	320	327	377	414	387

DALLAS INDEPENDENT SCHOOL DISTRICT

Report Run Date: 08/22/2018 04:35 AM

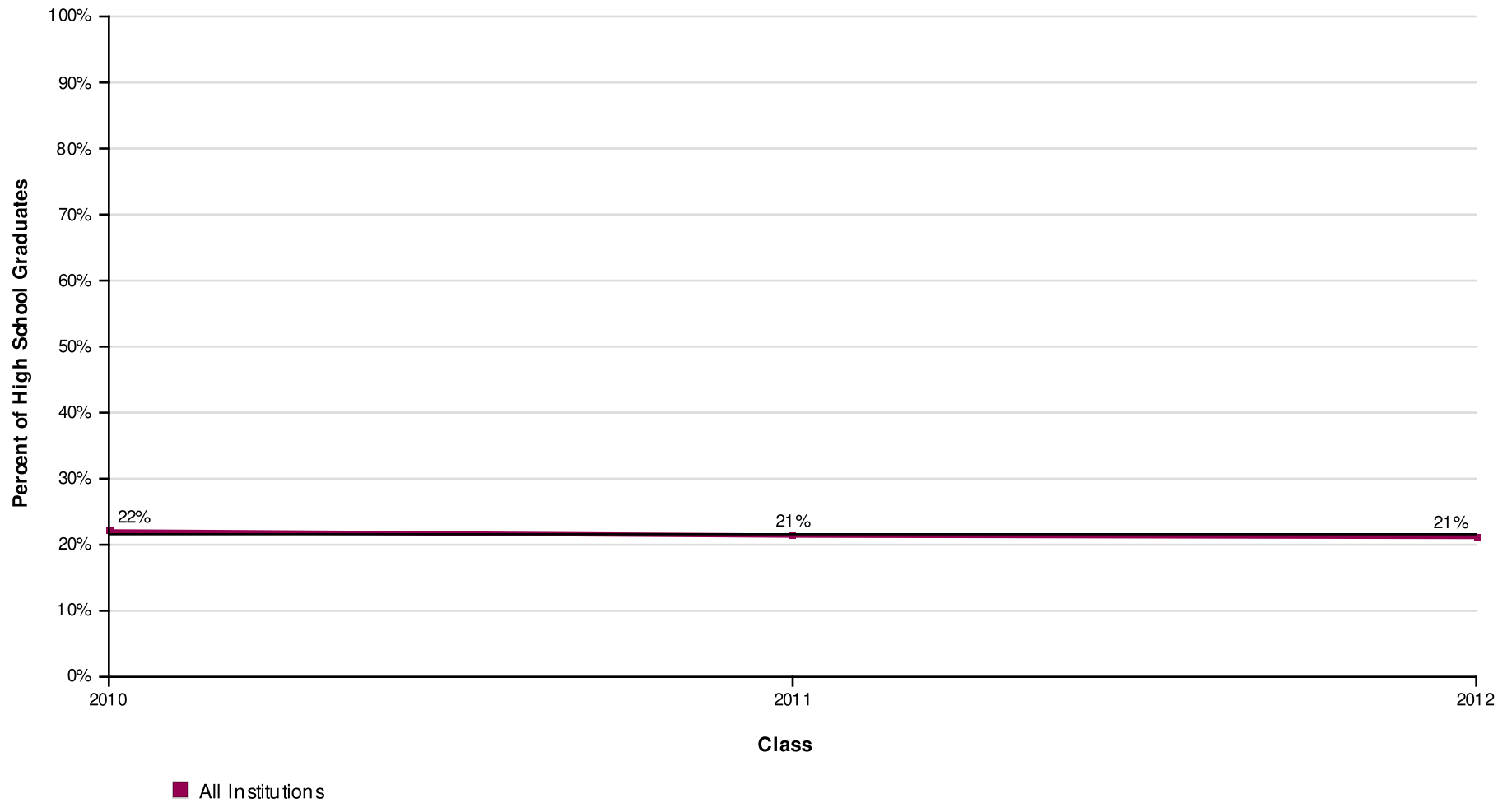
Page 21 of 47

**NATIONAL STUDENT
CLEARINGHOUSE**

©2012 National Student Clearinghouse. All rights reserved.

Percent of High School Class Who Completed a Degree Within Six Years

Effective Date = August 16, 2018



AVG = 22%

DALLAS INDEPENDENT SCHOOL DISTRICT

Report Run Date: 08/22/2018 04:35 AM

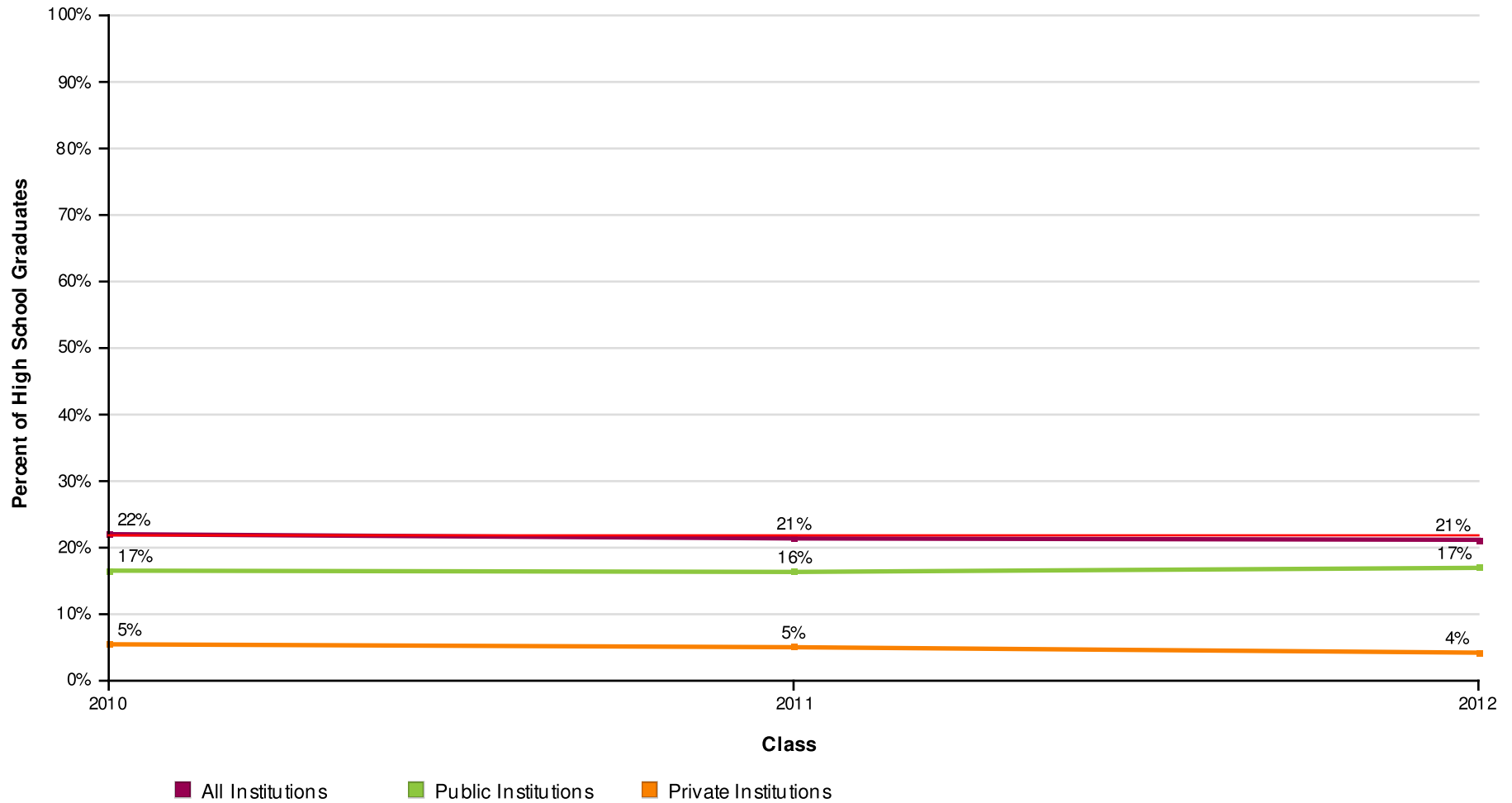
Page 22 of 47

**NATIONAL STUDENT
CLEARINGHOUSE**

©2012 National Student Clearinghouse. All rights reserved.

Percent of High School Class Who Completed a Degree Within Six Years by Institutional Type

Effective Date = August 16, 2018



AVG = 22%

DALLAS INDEPENDENT SCHOOL DISTRICT

Report Run Date: 08/22/2018 04:35 AM

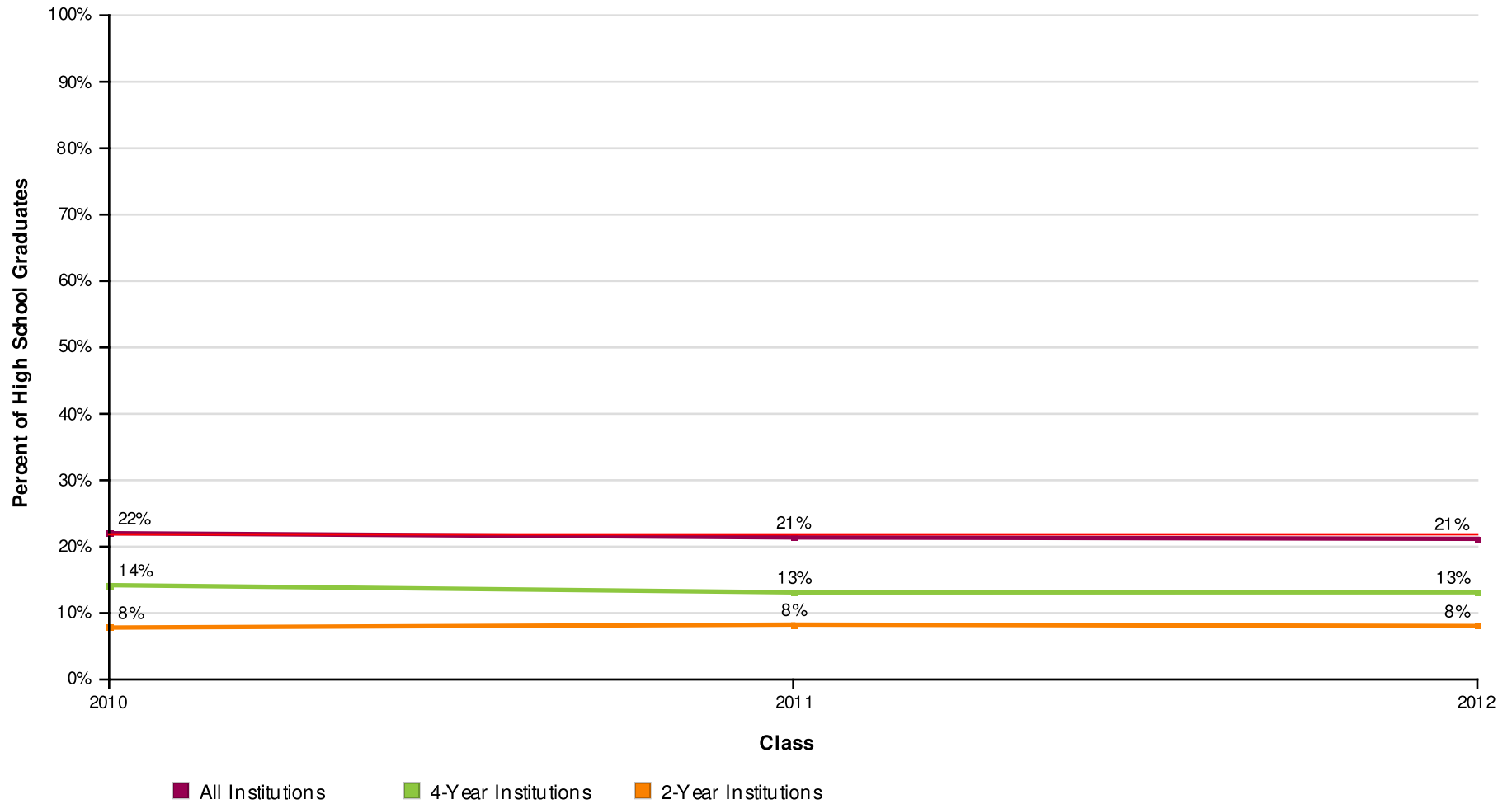
Page 23 of 47

**NATIONAL STUDENT
CLEARINGHOUSE**

©2012 National Student Clearinghouse. All rights reserved.

Percent of High School Class Who Completed a Degree Within Six Years by Institutional Level

Effective Date = August 16, 2018



AVG = 22%

DALLAS INDEPENDENT SCHOOL DISTRICT

Report Run Date: 08/22/2018 04:35 AM

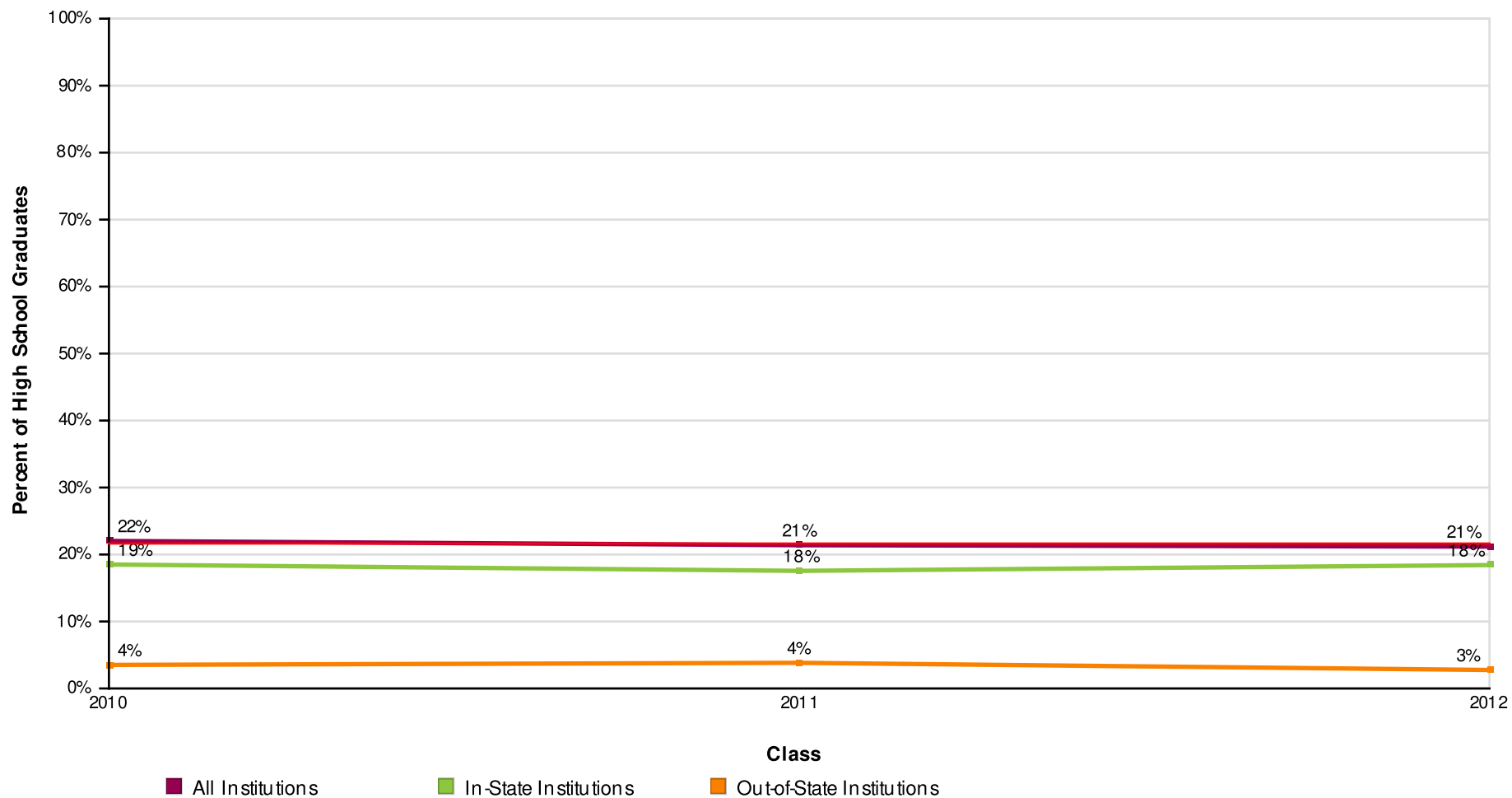
Page 24 of 47

**NATIONAL STUDENT
CLEARINGHOUSE**

©2012 National Student Clearinghouse. All rights reserved.

Percent of High School Class Who Completed a Degree Within Six Years by Institutional Location

Effective Date = August 16, 2018



AVG = 22%

DALLAS INDEPENDENT SCHOOL DISTRICT

Report Run Date: 08/22/2018 04:35 AM

Page 25 of 47

NATIONAL STUDENT
CLEARINGHOUSE

©2012 National Student Clearinghouse. All rights reserved.

Count of High School Graduates with a College Degree

Effective Date = August 16, 2018

Class of	2010	2011	2012
Total in the Class	7,047	7,209	7,208
Total With a Degree	1,552	1,542	1,527
Total from Public	1,166	1,179	1,223
Total from Private	386	363	304
Total from 4-Year	1,001	946	947
Total from 2-Year	551	596	580
Total In-State	1,304	1,266	1,328
Total Out-Of-State	248	276	199

DALLAS INDEPENDENT SCHOOL DISTRICT

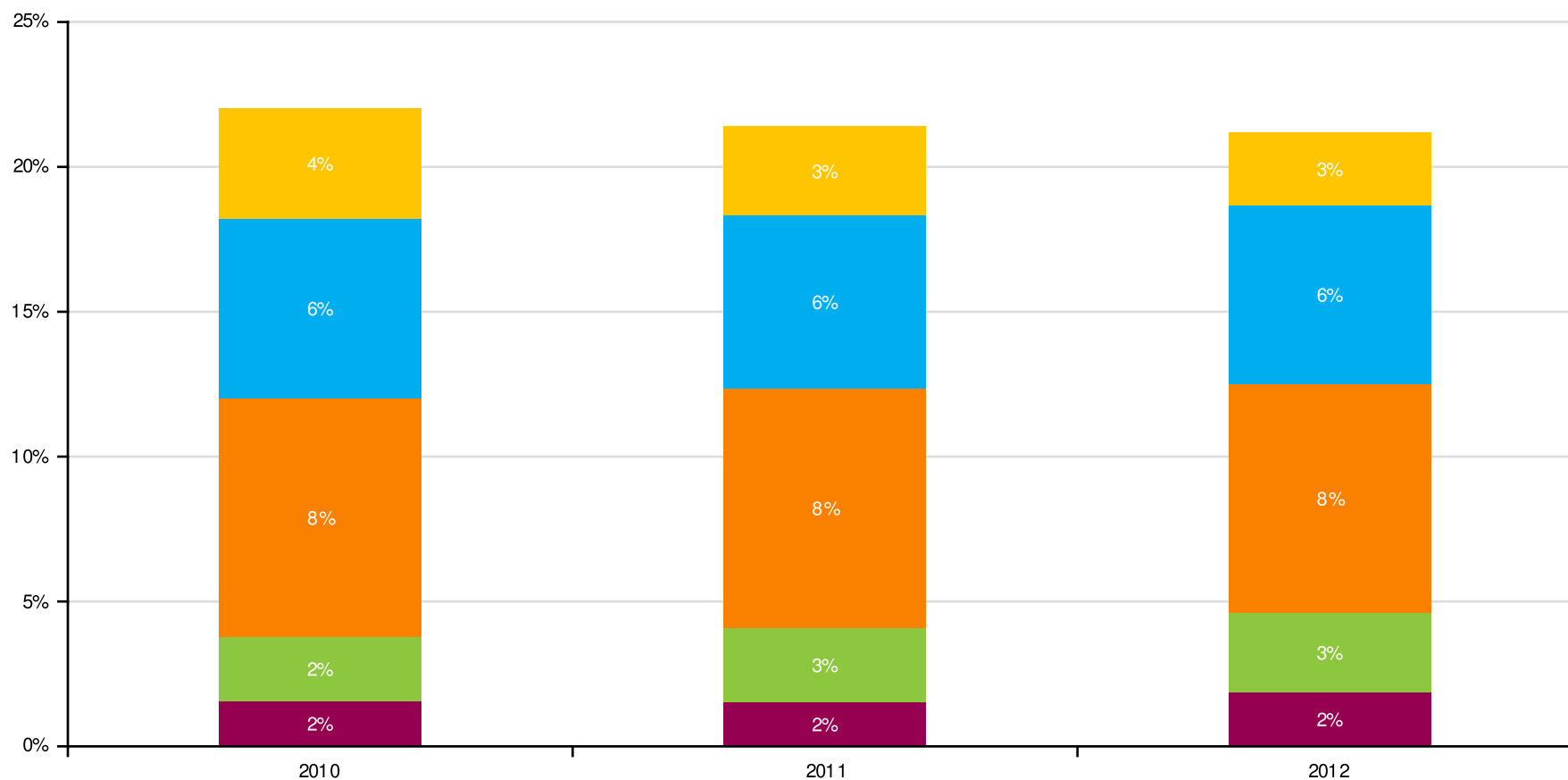
Report Run Date: 08/22/2018 04:35 AM

Page 26 of 47

**NATIONAL STUDENT
CLEARINGHOUSE**

©2012 National Student Clearinghouse. All rights reserved.

Time to College Graduation Within Six Years (Associate's, Bachelor's and Higher)



■ Graduated in 2 Years or Less
 ■ Graduated in 3 Years
 ■ Graduated in 4 Years
 ■ Graduated in 5 Years
 ■ Graduated in 6 Years

DALLAS INDEPENDENT SCHOOL DISTRICT

Report Run Date: 08/22/2018 04:35 AM

Page 27 of 47

**NATIONAL STUDENT
CLEARINGHOUSE**

©2012 National Student Clearinghouse. All rights reserved.

Count of Time to College Graduation within Six Years

Class of	2010	2011	2012
Total In the Class	7,047	7,209	7,208
Graduated in 2 Years or Less	111	110	135
Graduated in 3 Years	155	185	197
Graduated in 4 Years	581	596	570
Graduated in 5 Years	437	430	444
Graduated in 6 Years	268	221	181

DALLAS INDEPENDENT SCHOOL DISTRICT

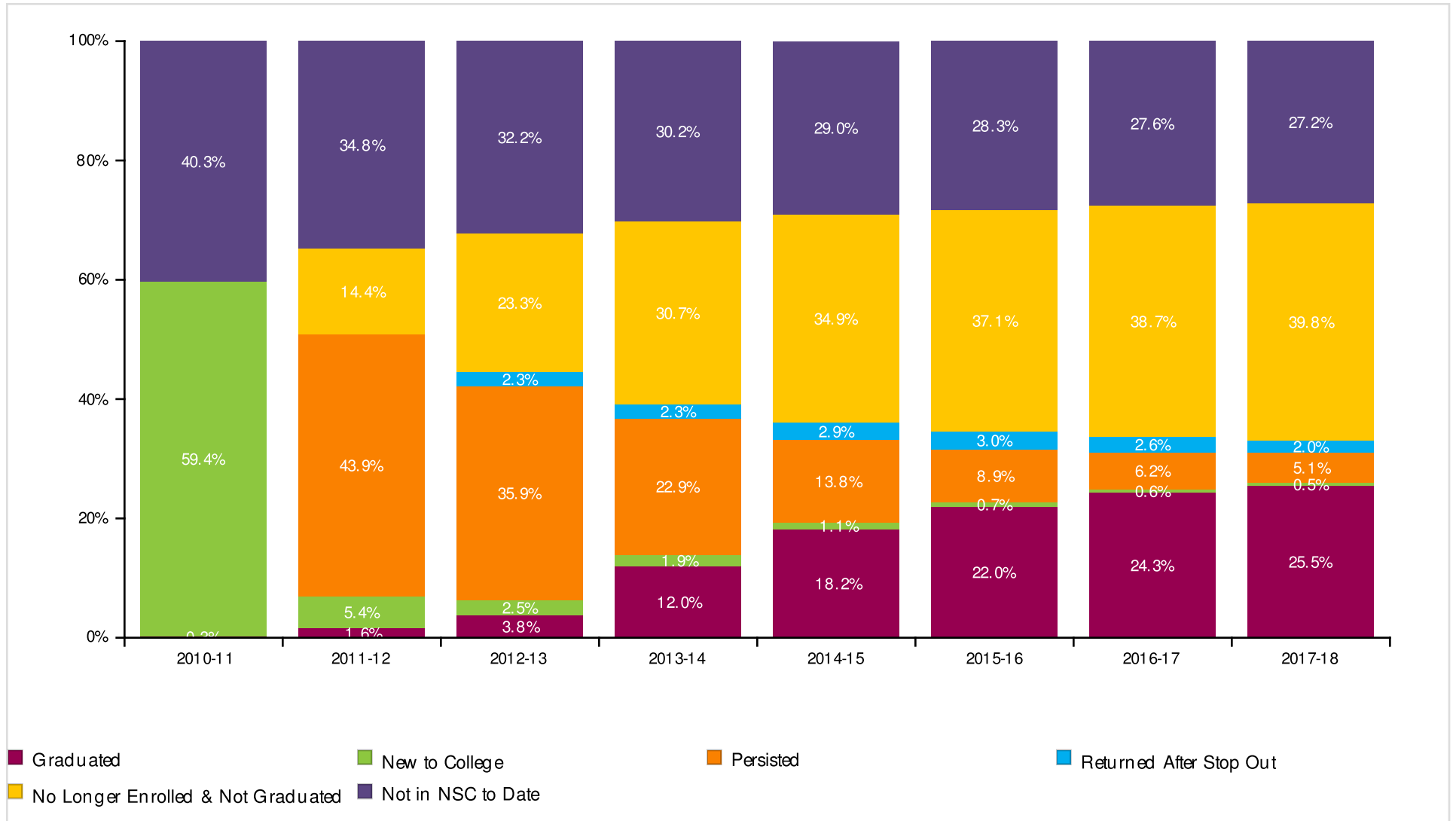
Report Run Date: 08/22/2018 04:35 AM

Page 28 of 47

**NATIONAL STUDENT
CLEARINGHOUSE**

©2012 National Student Clearinghouse. All rights reserved.

Class of 2010 Postsecondary Enrollment and Progress



DALLAS INDEPENDENT SCHOOL DISTRICT

Report Run Date: 08/22/2018 04:35 AM

Page 29 of 47

**NATIONAL STUDENT
CLEARINGHOUSE**

©2012 National Student Clearinghouse. All rights reserved.

Count of Class 2010 Postsecondary Enrollment and Progress

Total in the Class: 7,047

Academic Years	2010-11	2011-12	2012-13	2013-14	2014-15	2015-16	2016-17	2017-18
New to College	4184	378	177	134	75	50	45	33
Persisted	0	3094	2529	1611	975	627	439	358
Returned After Stop Out	0	0	163	163	205	210	180	143
No Longer Enrolled & Not Graduated	0	1012	1641	2165	2462	2614	2724	2805
Graduated	21	111	266	847	1284	1552	1712	1794
Not in NSC to Date	2842	2452	2271	2127	2046	1994	1947	1914

DALLAS INDEPENDENT SCHOOL DISTRICT

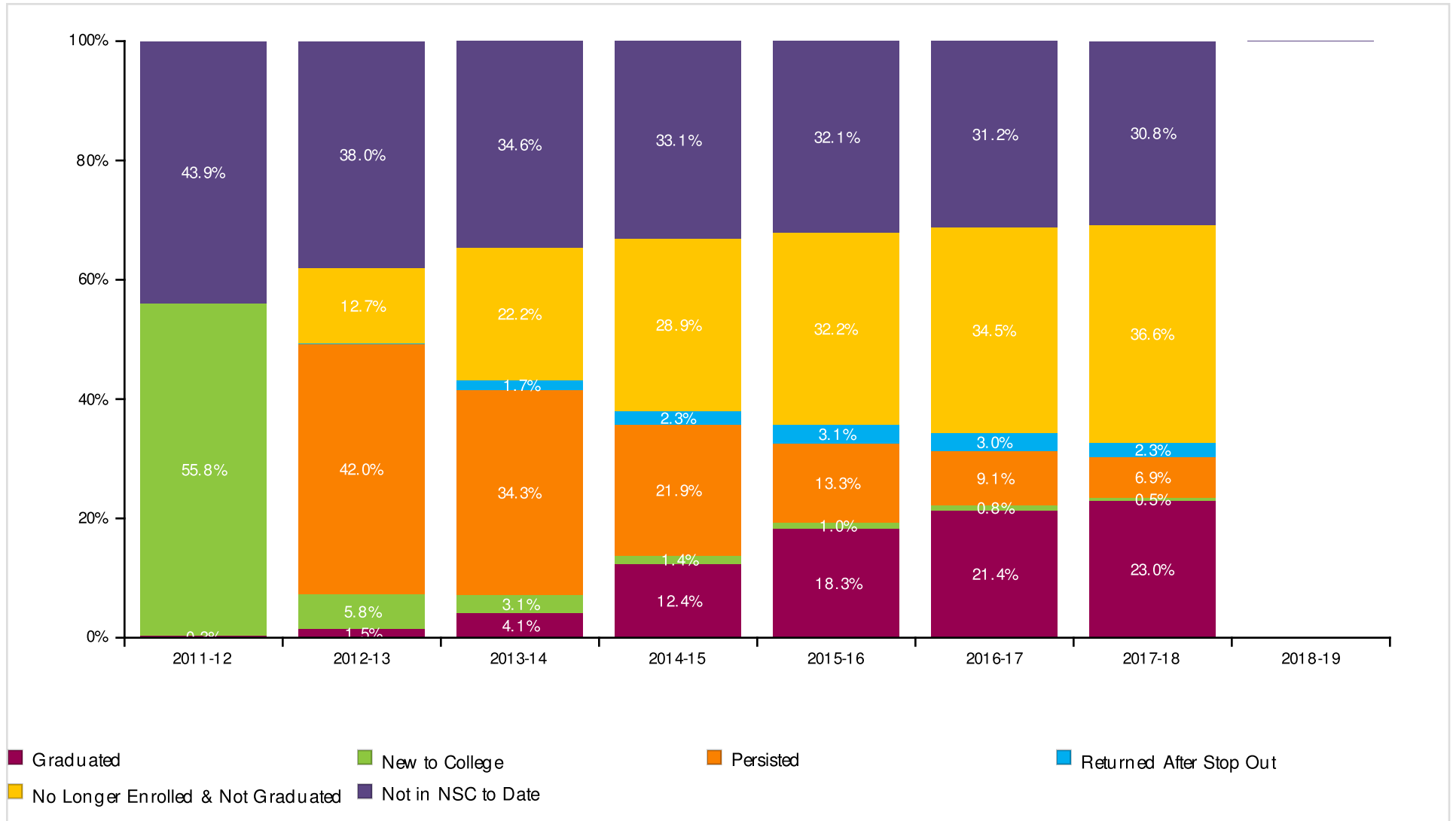
Report Run Date: 08/22/2018 04:35 AM

Page 30 of 47

**NATIONAL STUDENT
CLEARINGHOUSE**

©2012 National Student Clearinghouse. All rights reserved.

Class of 2011 Postsecondary Enrollment and Progress



DALLAS INDEPENDENT SCHOOL DISTRICT

Report Run Date: 08/22/2018 04:35 AM

Page 31 of 47

**NATIONAL STUDENT
CLEARINGHOUSE**

©2012 National Student Clearinghouse. All rights reserved.

Count of Class 2011 Postsecondary Enrollment and Progress

Total in the Class: 7,209

Academic Years	2011-12	2012-13	2013-14	2014-15	2015-16	2016-17	2017-18	2018-19
New to College	4023	417	221	103	72	61	33	0
Persisted	0	3029	2474	1582	958	654	499	0
Returned After Stop Out	0	0	125	165	225	218	163	0
No Longer Enrolled & Not Graduated	0	917	1597	2082	2322	2484	2641	0
Graduated	22	110	295	891	1321	1542	1656	0
Not in NSC to Date	3164	2736	2497	2386	2311	2250	2217	0

DALLAS INDEPENDENT SCHOOL DISTRICT

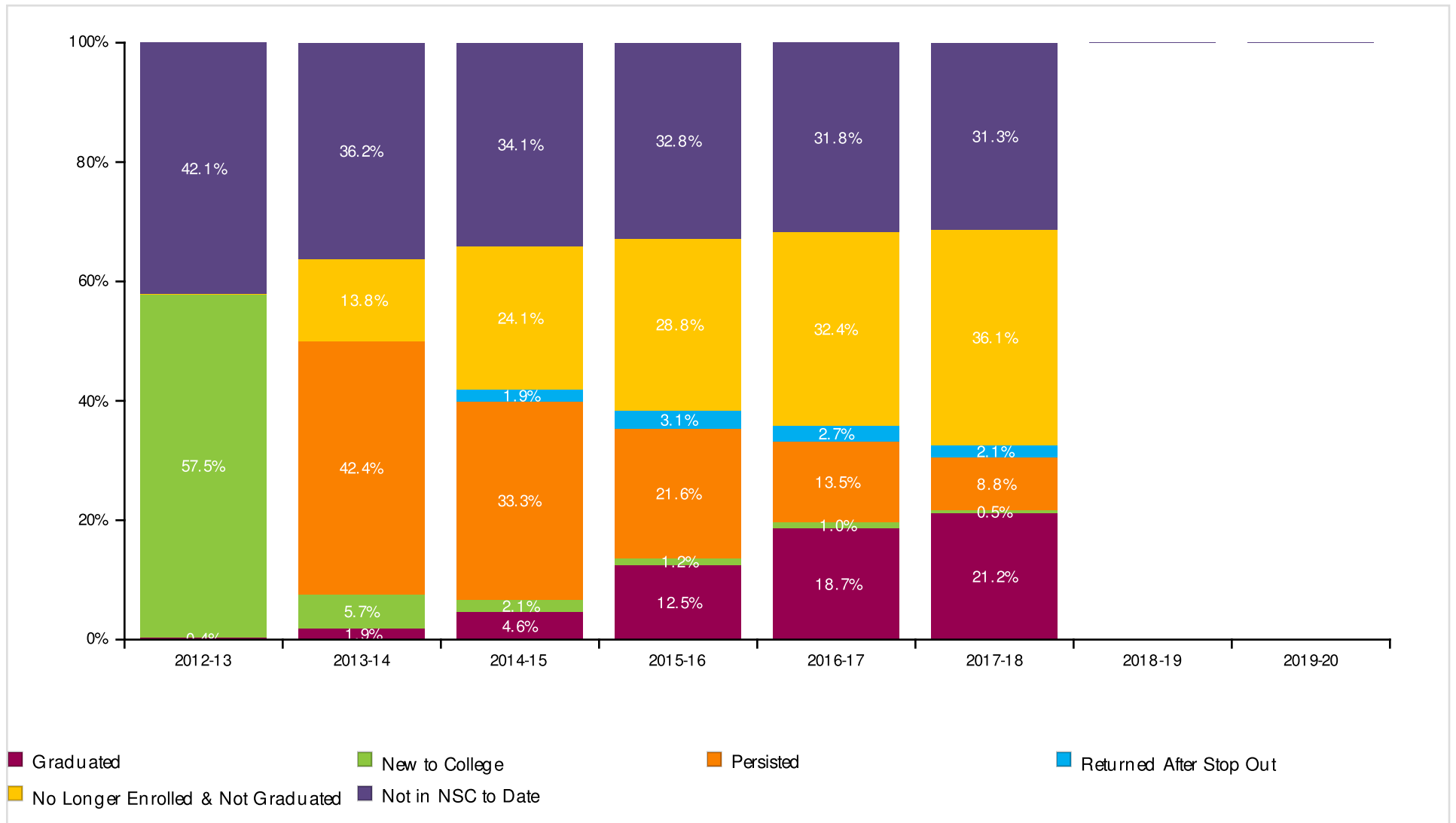
Report Run Date: 08/22/2018 04:35 AM

Page 32 of 47

**NATIONAL STUDENT
CLEARINGHOUSE**

©2012 National Student Clearinghouse. All rights reserved.

Class of 2012 Postsecondary Enrollment and Progress



DALLAS INDEPENDENT SCHOOL DISTRICT

Report Run Date: 08/22/2018 04:35 AM

Page 33 of 47

**NATIONAL STUDENT
CLEARINGHOUSE**

©2012 National Student Clearinghouse. All rights reserved.

Count of Class 2012 Postsecondary Enrollment and Progress

Total in the Class: 7,208

Academic Years	2012-13	2013-14	2014-15	2015-16	2016-17	2017-18	2018-19	2019-20
New to College	4146	412	150	85	73	37	0	0
Persisted	0	3059	2399	1554	970	635	0	0
Returned After Stop Out	0	0	135	225	192	152	0	0
No Longer Enrolled & Not Graduated	0	992	1735	2076	2336	2604	0	0
Graduated	29	135	332	902	1346	1527	0	0
Not in NSC to Date	3033	2610	2457	2366	2291	2253	0	0

DALLAS INDEPENDENT SCHOOL DISTRICT

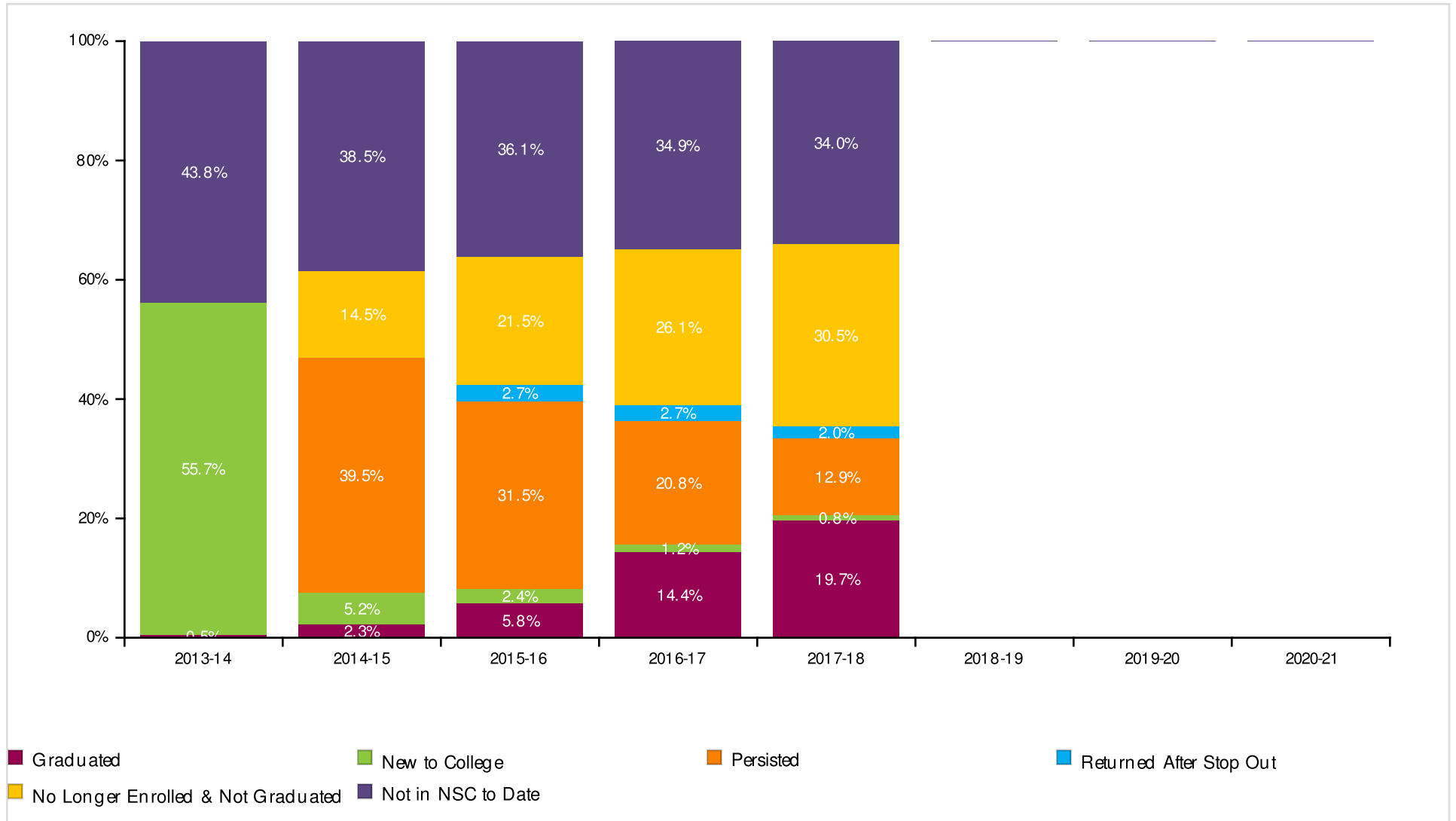
Report Run Date: 08/22/2018 04:35 AM

Page 34 of 47

**NATIONAL STUDENT
CLEARINGHOUSE**

©2012 National Student Clearinghouse. All rights reserved.

Class of 2013 Postsecondary Enrollment and Progress



DALLAS INDEPENDENT SCHOOL DISTRICT

Report Run Date: 08/22/2018 04:35 AM

Page 35 of 47

**NATIONAL STUDENT
CLEARINGHOUSE**

©2012 National Student Clearinghouse. All rights reserved.

Count of Class 2013 Postsecondary Enrollment and Progress

Total in the Class: 7,694

Academic Years	2013-14	2014-15	2015-16	2016-17	2017-18	2018-19	2019-20	2020-21
New to College	4288	403	182	89	65	0	0	0
Persisted	0	3036	2426	1599	993	0	0	0
Returned After Stop Out	0	0	210	206	152	0	0	0
No Longer Enrolled & Not Graduated	0	1116	1654	2007	2347	0	0	0
Graduated	35	176	445	1109	1518	0	0	0
Not in NSC to Date	3371	2963	2777	2684	2619	0	0	0

DALLAS INDEPENDENT SCHOOL DISTRICT

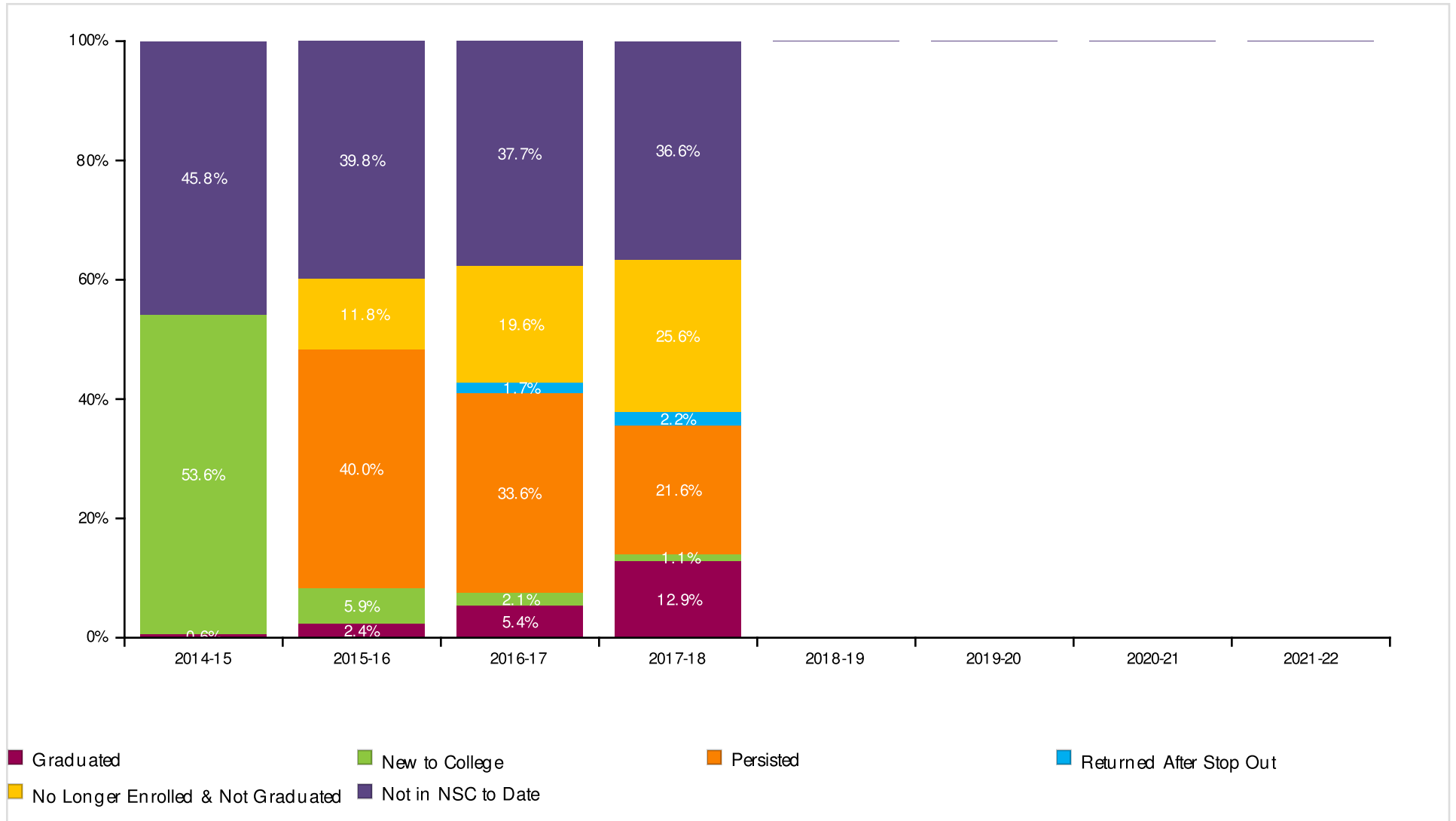
Report Run Date: 08/22/2018 04:35 AM

Page 36 of 47

**NATIONAL STUDENT
CLEARINGHOUSE**

©2012 National Student Clearinghouse. All rights reserved.

Class of 2014 Postsecondary Enrollment and Progress



DALLAS INDEPENDENT SCHOOL DISTRICT

Report Run Date: 08/22/2018 04:35 AM

Page 37 of 47

**NATIONAL STUDENT
CLEARINGHOUSE**

©2012 National Student Clearinghouse. All rights reserved.

Count of Class 2014 Postsecondary Enrollment and Progress

Total in the Class: 7,346

Academic Years	2014-15	2015-16	2016-17	2017-18	2018-19	2019-20	2020-21	2021-22
New to College	3934	436	152	81	0	0	0	0
Persisted	0	2940	2465	1584	0	0	0	0
Returned After Stop Out	0	0	124	165	0	0	0	0
No Longer Enrolled & Not Graduated	0	870	1438	1877	0	0	0	0
Graduated	47	176	396	949	0	0	0	0
Not in NSC to Date	3365	2924	2771	2690	0	0	0	0

DALLAS INDEPENDENT SCHOOL DISTRICT

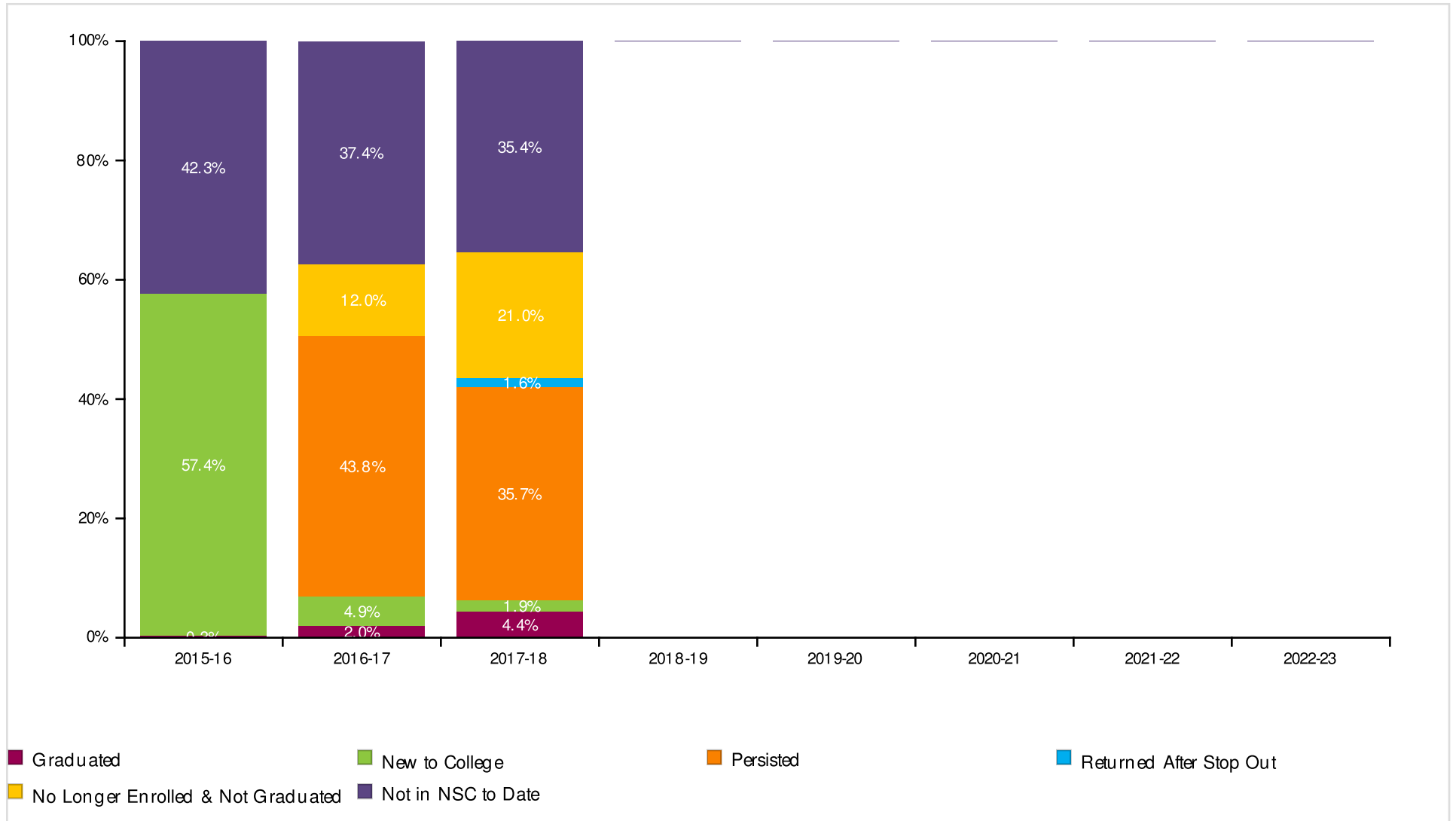
Report Run Date: 08/22/2018 04:35 AM

Page 38 of 47

**NATIONAL STUDENT
CLEARINGHOUSE**

©2012 National Student Clearinghouse. All rights reserved.

Class of 2015 Postsecondary Enrollment and Progress



DALLAS INDEPENDENT SCHOOL DISTRICT

Report Run Date: 08/22/2018 04:35 AM

Page 39 of 47

**NATIONAL STUDENT
CLEARINGHOUSE**

©2012 National Student Clearinghouse. All rights reserved.

Count of Class 2015 Postsecondary Enrollment and Progress

Total in the Class: 7,421

Academic Years	2015-16	2016-17	2017-18	2018-19	2019-20	2020-21	2021-22	2022-23
New to College	4258	362	143	0	0	0	0	0
Persisted	0	3247	2647	0	0	0	0	0
Returned After Stop Out	0	0	121	0	0	0	0	0
No Longer Enrolled & Not Graduated	0	892	1557	0	0	0	0	0
Graduated	25	147	323	0	0	0	0	0
Not in NSC to Date	3138	2773	2630	0	0	0	0	0

DALLAS INDEPENDENT SCHOOL DISTRICT

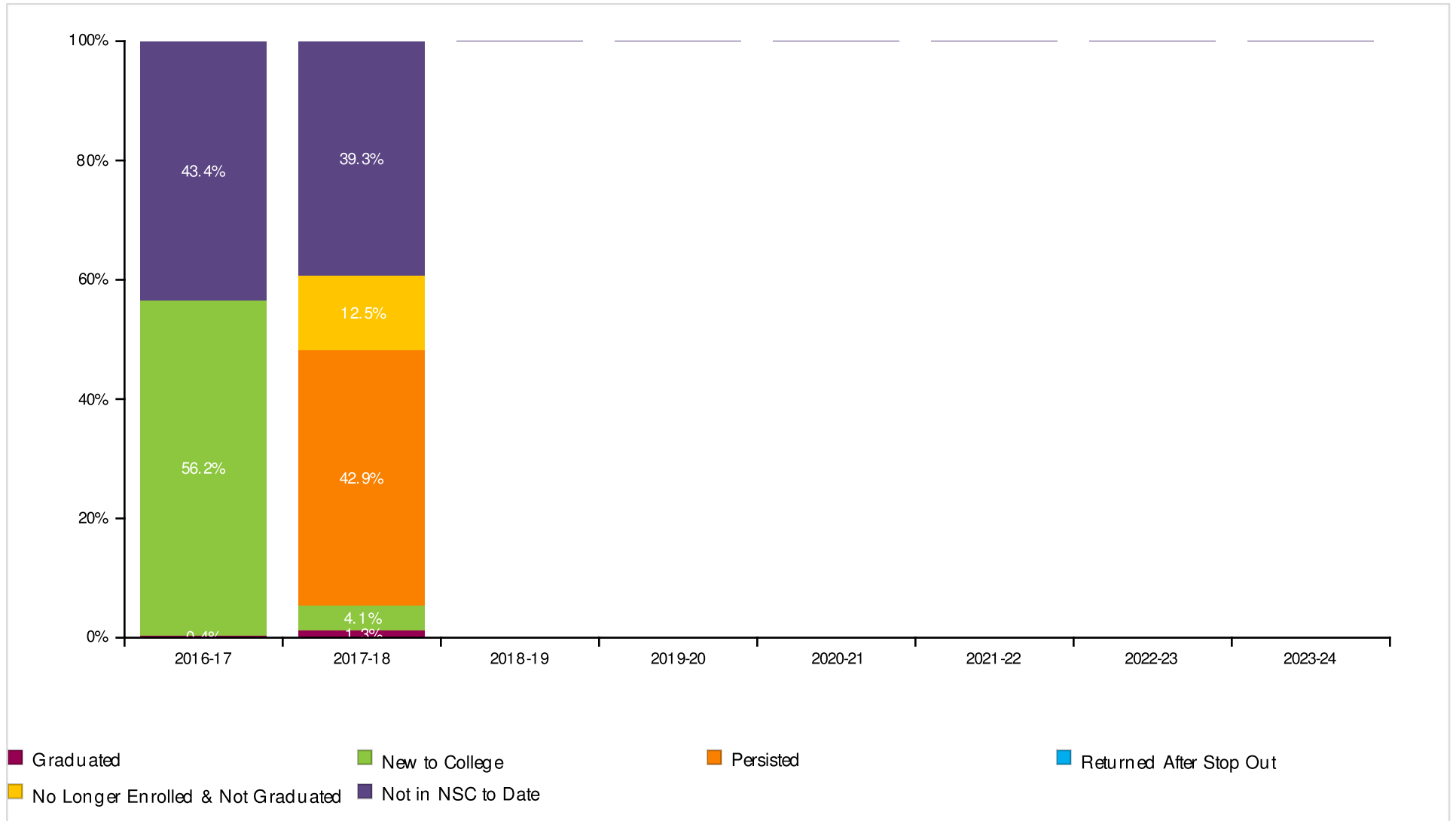
Report Run Date: 08/22/2018 04:35 AM

Page 40 of 47

**NATIONAL STUDENT
CLEARINGHOUSE**

©2012 National Student Clearinghouse. All rights reserved.

Class of 2016 Postsecondary Enrollment and Progress



DALLAS INDEPENDENT SCHOOL DISTRICT

Report Run Date: 08/22/2018 04:35 AM

Page 41 of 47

**NATIONAL STUDENT
CLEARINGHOUSE**

©2012 National Student Clearinghouse. All rights reserved.

Count of Class 2016 Postsecondary Enrollment and Progress

Total in the Class: 7,767

Academic Years	2016-17	2017-18	2018-19	2019-20	2020-21	2021-22	2022-23	2023-24
New to College	4365	317	0	0	0	0	0	0
Persisted	0	3331	0	0	0	0	0	0
Returned After Stop Out	0	0	0	0	0	0	0	0
No Longer Enrolled & Not Graduated	0	969	0	0	0	0	0	0
Graduated	34	100	0	0	0	0	0	0
Not in NSC to Date	3368	3050	0	0	0	0	0	0

DALLAS INDEPENDENT SCHOOL DISTRICT

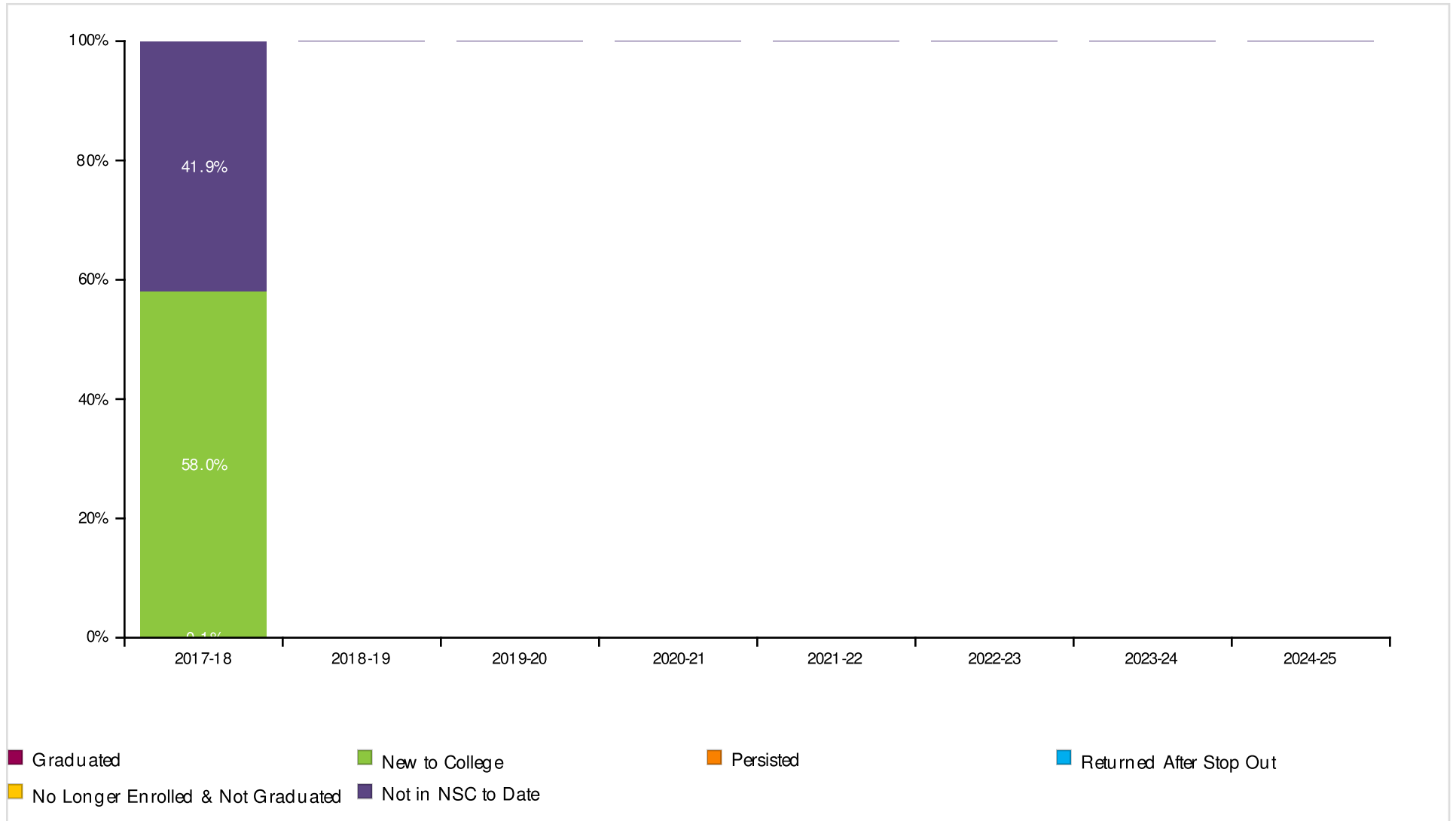
Report Run Date: 08/22/2018 04:35 AM

Page 42 of 47

**NATIONAL STUDENT
CLEARINGHOUSE**

©2012 National Student Clearinghouse. All rights reserved.

Class of 2017 Postsecondary Enrollment and Progress



DALLAS INDEPENDENT SCHOOL DISTRICT

Report Run Date: 08/22/2018 04:35 AM

Page 43 of 47

**NATIONAL STUDENT
CLEARINGHOUSE**

©2012 National Student Clearinghouse. All rights reserved.

Count of Class 2017 Postsecondary Enrollment and Progress

Total in the Class: 7,677

Academic Years	2017-18	2018-19	2019-20	2020-21	2021-22	2022-23	2023-24	2024-25
New to College	4449	0	0	0	0	0	0	0
Persisted	0	0	0	0	0	0	0	0
Returned After Stop Out	0	0	0	0	0	0	0	0
No Longer Enrolled & Not Graduated	0	0	0	0	0	0	0	0
Graduated	9	0	0	0	0	0	0	0
Not in NSC to Date	3219	0	0	0	0	0	0	0

DALLAS INDEPENDENT SCHOOL DISTRICT

Report Run Date: 08/22/2018 04:35 AM

Page 44 of 47

**NATIONAL STUDENT
CLEARINGHOUSE**

©2012 National Student Clearinghouse. All rights reserved.

**Most Common Institutions of Enrollment in the Fall Immediately following High School Graduation
for All Classes by Number of Students**

Name	Rank	State	Level	Type	Total
MOUNTAIN VIEW COLLEGE-DALLAS CC DISTRICT	1	TX	2-year	Public	3,347
EASTFIELD COLLEGE-DALLAS CC DISTRICT	2	TX	2-year	Public	3,270
EL CENTRO COLLEGE-DALLAS CC DISTRICT	3	TX	2-year	Public	2,912
BROOKHAVEN COLLEGE-DALLAS CC DISTRICT	4	TX	2-year	Public	1,728
UNIVERSITY OF NORTH TEXAS	5	TX	4-year	Public	1,570
RICHLAND COLLEGE-DALLAS CC DISTRICT	6	TX	2-year	Public	1,321
UNIVERSITY OF TEXAS ARLINGTON	7	TX	4-year	Public	1,255
TEXAS WOMAN'S UNIVERSITY	8	TX	4-year	Public	1,178
UNIVERSITY OF TEXAS AT AUSTIN	9	TX	4-year	Public	872
TEXAS A&M UNIVERSITY	10	TX	4-year	Public	801
TEXAS A&M UNIVERSITY - COMMERCE	11	TX	4-year	Public	744
CEDAR VALLEY COLLEGE-DALLAS CC DISTRICT	12	TX	2-year	Public	720
UNIVERSITY OF TEXAS AT DALLAS	13	TX	4-year	Public	695
PRAIRIE VIEW A&M UNIVERSITY	14	TX	4-year	Public	644
TEXAS SOUTHERN UNIVERSITY	15	TX	4-year	Public	408
STEPHEN F. AUSTIN STATE UNIVERSITY	16	TX	4-year	Public	401
UNIVERSITY OF NORTH TEXAS AT DALLAS	17	TX	4-year	Public	390
TYLER JUNIOR COLLEGE	18	TX	2-year	Public	315
NAVARRO COLLEGE	19	TX	2-year	Public	307
TEXAS STATE UNIVERSITY - SAN MARCOS	20	TX	4-year	Public	303
TEXAS TECH UNIVERSITY, LUBBOCK	21	TX	4-year	Public	295
SAM HOUSTON STATE UNIVERSITY	22	TX	4-year	Public	289
SOUTHERN METHODIST UNIVERSITY	23	TX	4-year	Private	231
NORTH LAKE COLLEGE-DALLAS CC DISTRICT	24	TX	2-year	Public	222
UNIVERSITY OF HOUSTON	25	TX	4-year	Public	171

DALLAS INDEPENDENT SCHOOL DISTRICT

Report Run Date: 08/22/2018 04:35 AM

Page 45 of 47

**NATIONAL STUDENT
CLEARINGHOUSE**

©2012 National Student Clearinghouse. All rights reserved.

Appendix

Graphs (in order of appearance)	Description
Percent of Students Enrolled in College the Fall Immediately Following Graduation From High School (pp. 2-5)	Percentage of high school students who enrolled in a two- or four- year postsecondary institution in the fall semester immediately following graduation. The fall semester immediately following graduation is defined as any college enrollment between August 15 and October 31. The student must have an active enrollment between these dates. Shown only for classes which have completed a fall semester.
Percent of Students Enrolled in College at Any Time During the First Year After High School (pp. 7-10)	Percentage of high school students who enrolled in a two- or four-year postsecondary institution in the academic year immediately following graduation. The first year after high school includes any college enrollment where a student had active enrollment between August 15 of the graduation calendar year and August 14 of the following calendar year.*
Percent of Students Enrolled in College at Any Time During the First Two Years After High School (pp. 12-15)	Percentage of high school students who enrolled in a two- or four-year postsecondary institution in the academic year immediately following graduation. The two years after high school includes any college where the student had active enrollment between August 15 of the graduation calendar year and August 14 of the following two calendar years.*
Percent of Students Enrolled in College the First year After High School Who Returned for a Second Year (pp. 17-20)	Percentage of students who remained enrolled (persisted) in postsecondary education from the first year to the second year. Note: The graphs show the percentage of students who remained enrolled at any postsecondary institution, not retention at the same institution. Shown only for classes which have completed the first two years after high school.
Percent of High School Class with a College Degree Within Six Years (pp. 22-25)	The six-year degree completion rate at two- and four- year institutions. Shown only for classes where six academic years have passed since high school graduation. When a student has a degree with an award date that is more than 6 years after high school year, it will not be counted in this report; it will be reported in the student-level Detail Report. Only associate's, bachelor's, and advanced degrees are counted in these rates. Certificates are not included in these counts but will be included in the student-level Detail Report.
Time to College Graduation Within Six Years (p. 27)	This graph shows the time to first degree broken down by the number of academic years since the students graduated from high school.
Class of XXXX Postsecondary Enrollment and Progress (each class year is on its own page)	<p>Progress of a single class of students (cohort) through postsecondary education up to eight years after high school graduation. Each segment of the bar chart corresponds to one of the following definitions:</p> <p>GRADUATED: Student has completed an associate's, bachelor's or higher degree (certificates are not included). Once a student is counted as a graduate, s/he is not counted again elsewhere in the report. A Graduated Record is reported before all other possible categories (e.g. New to College, Persisted, etc.)</p> <p>NEW TO COLLEGE: First year that the student was found in the Clearinghouse database.</p> <p>PERSISTED: Student was enrolled during the previous year and continues to be enrolled in the current year. The graphs show the student's continued enrollment at any postsecondary institution, not retention at the same institution.</p> <p>RETURNED AFTER STOP OUT: Student was enrolled, did not appear in postsecondary education the following year, and reappeared in a year thereafter.</p> <p>NO LONGER ENROLLED & NOT GRADUATED: Student was enrolled in postsecondary education, is not currently enrolled and there is no record of completion.</p> <p>NOT IN NSC TO DATE: Student was not found in the Clearinghouse database.**</p>
Most Common Institutions of Enrollment in the Fall Immediately Following Graduation from High School for All Classes - by Number of Students	A comprehensive list of the top 25 most frequently attended postsecondary institutions your students attended in the first fall following high school graduation.

Term	Definition
Effective Date	Set by Clearinghouse's Research Center three times per year- Fall, Spring and Summer. The date will be noted in the Report File Name and within the StudentTracker application. The date is established to ensure that your StudentTracker reports provide the most comprehensive enrollment and degree data provided by the colleges and universities for a given period, and that all secondary education institutions are matched against the same set of post-secondary data. Reports generated in between effective dates will be processed against the most recent effective date; no new data will be reported.
High School Class (labeled by graduation year)	Includes all students who graduated high school between September 1 of the previous year and August 31 of the graduation year. Also referred to as a cohort. Defined as any collegiate enrollment that occurs between August 15 of one year and August 14 of the following year.
Academic Year	Indicates the level of degree predominantly offered by the institution (i.e. two-year or four-year).
Institutional Level	Indicates whether the institution is controlled publically or by a private entity.
Institutional Type	Indicates if an institution is in-state or out-of-state based on the comparison between the states where the institution and the high school are located.
Institutional Location	A packet of reports for many of the same outcomes described above but stratified by the Demographic data elements you provided in your Diploma or Request file, if any. The Demographic data elements are: Gender, Ethnicity, Economic Disadvantage indicator, Disability indicator, English Language Learner.
Demographic Packet	A packet of reports for many of the same outcomes described above but stratified by the Academic data elements you provided in your Diploma or Request file, if any. The Academic data elements are: Math Assessment 8th grade and high school, English Assessment 8th grade and high school, Dual Enrollment indicator and Number of Semesters of Math completed.
Academic Packet	

*Revised in Spring 2016 to display the recent high school class even though the full time period has not elapsed

**Institutions that participate in the Clearinghouse represent more than 98% of the nation's two- and four- year postsecondary enrollment. Students who are enrolled in postsecondary institutions that do not participate in the Clearinghouse are not in the Clearinghouse database.