

NATIONAL STUDENT CLEARINGHOUSE[®]

StudentTracker[®] for High Schools Aggregate Report

Prepared for
DALLAS INDEPENDENT SCHOOL DISTRICT
NCES Code: 4816230

DALLAS INDEPENDENT SCHOOL DISTRICT

Report Run Date: 04/11/2017 08:47 PM

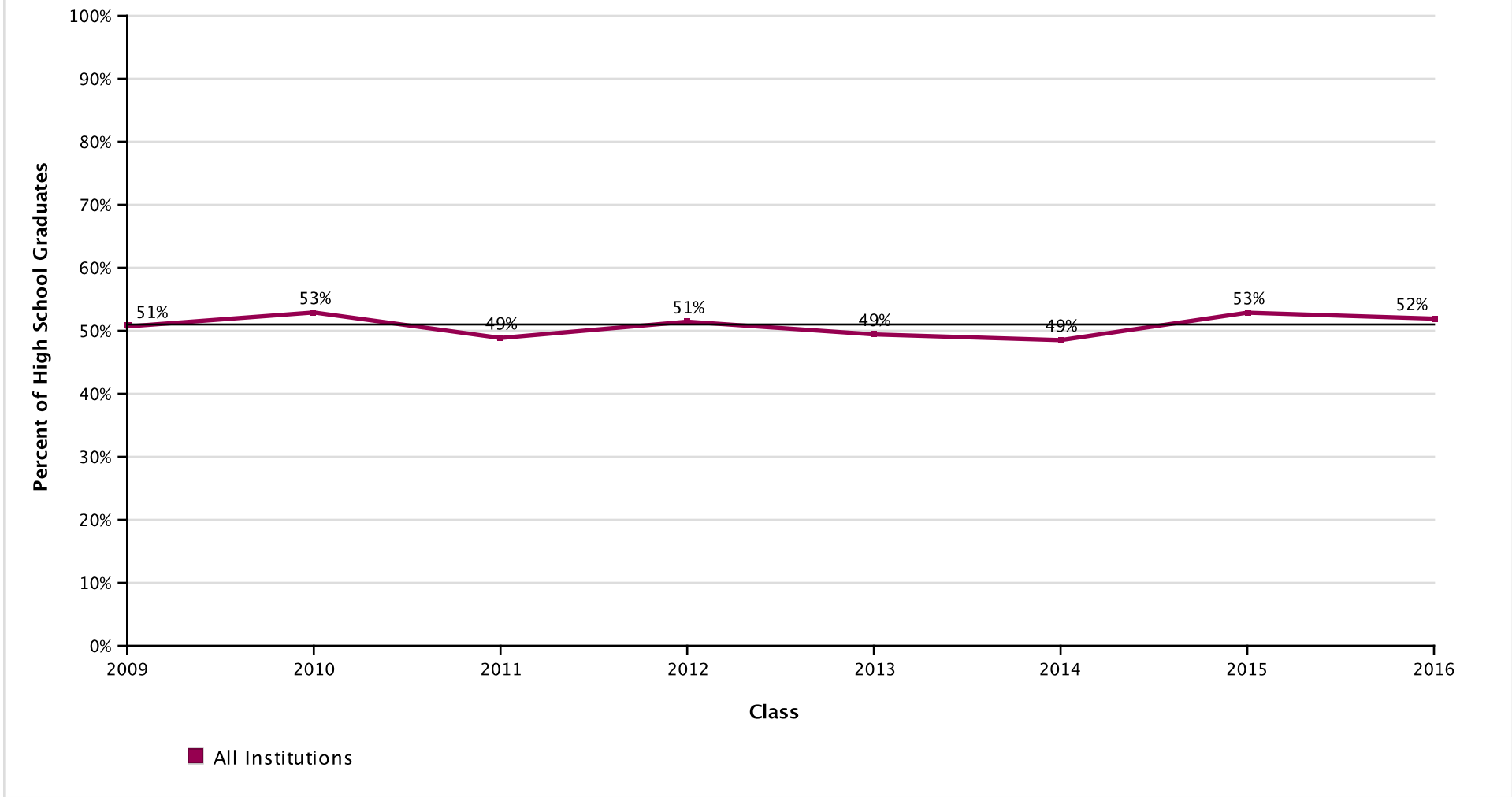
Page 1 of 45

NATIONAL STUDENT
CLEARINGHOUSE[®]

©2012 National Student Clearinghouse. All rights reserved.

Percent of Students Enrolled in College the Fall Immediately After High School

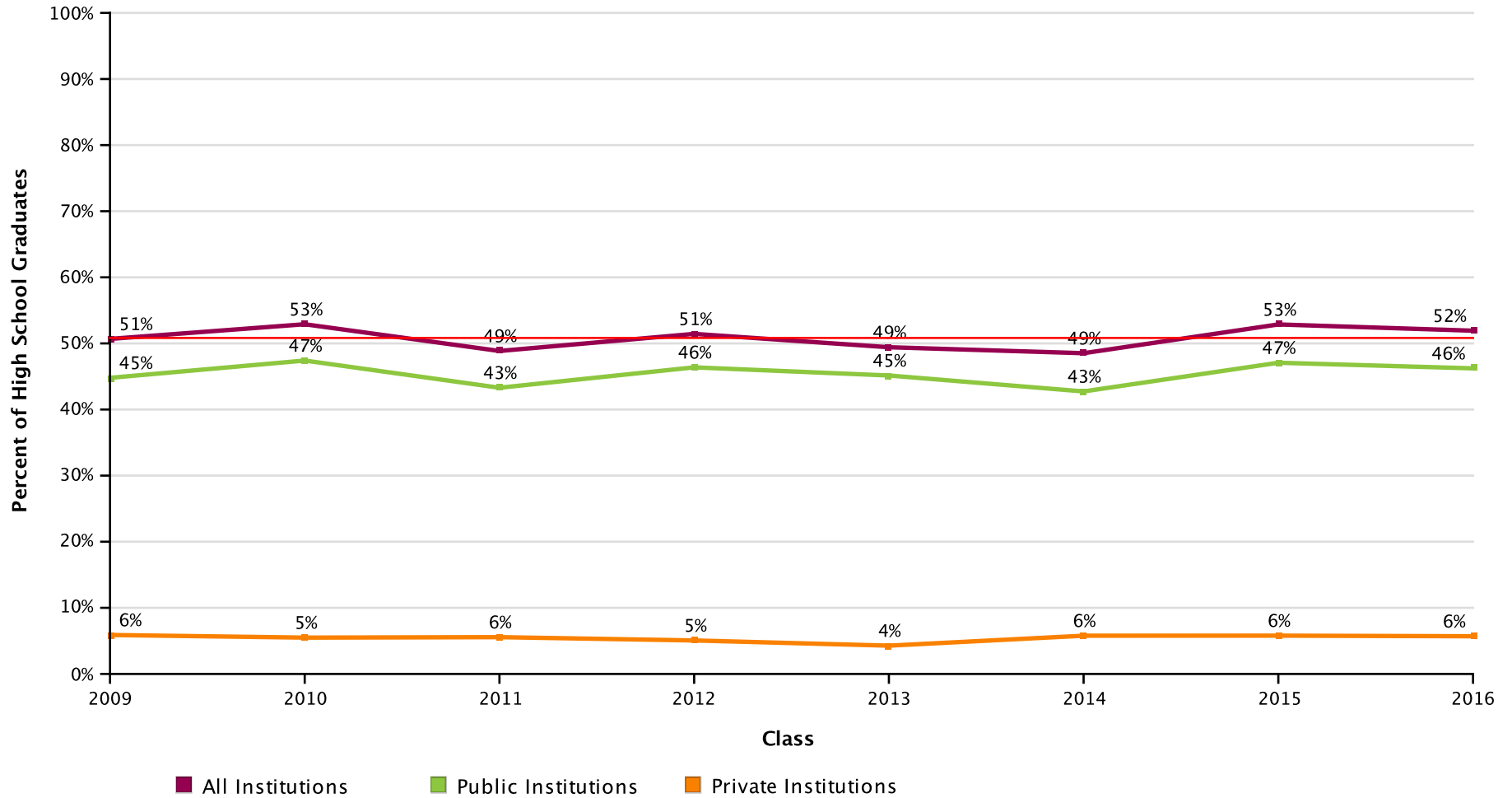
Effective Date = April 6, 2017



AVG = 51%

Percent of Students Enrolled in College the Fall Immediately After High School by Institutional Type

Effective Date = April 6, 2017



AVG = 51%

DALLAS INDEPENDENT SCHOOL DISTRICT

Report Run Date: 04/11/2017 08:47 PM

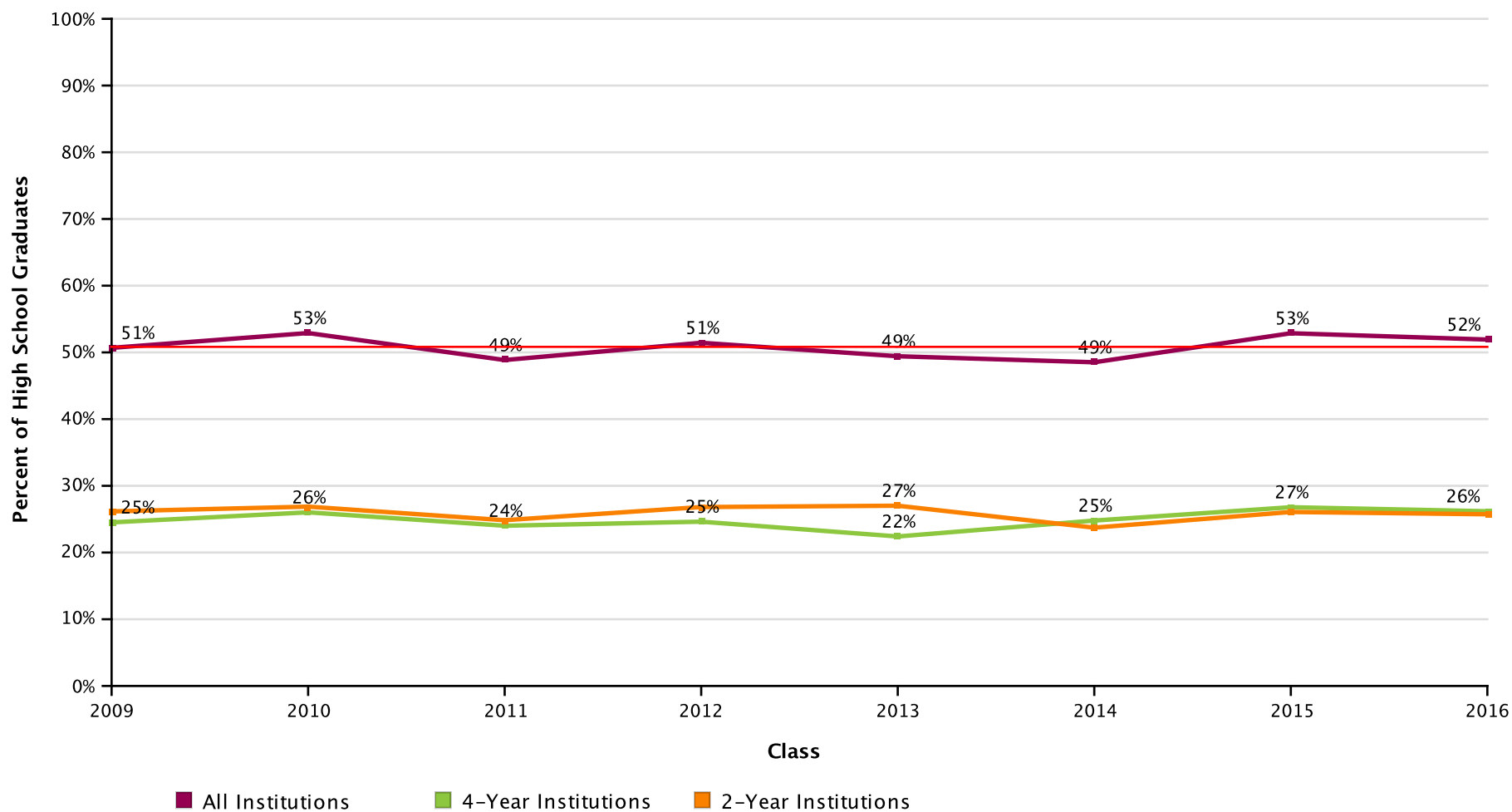
Page 3 of 45

NATIONAL STUDENT
CLEARINGHOUSE®

©2012 National Student Clearinghouse. All rights reserved.

Percent of Students Enrolled in College the Fall Immediately After High School by Institutional Level

Effective Date = April 6, 2017



AVG = 51%

DALLAS INDEPENDENT SCHOOL DISTRICT

Report Run Date: 04/11/2017 08:47 PM

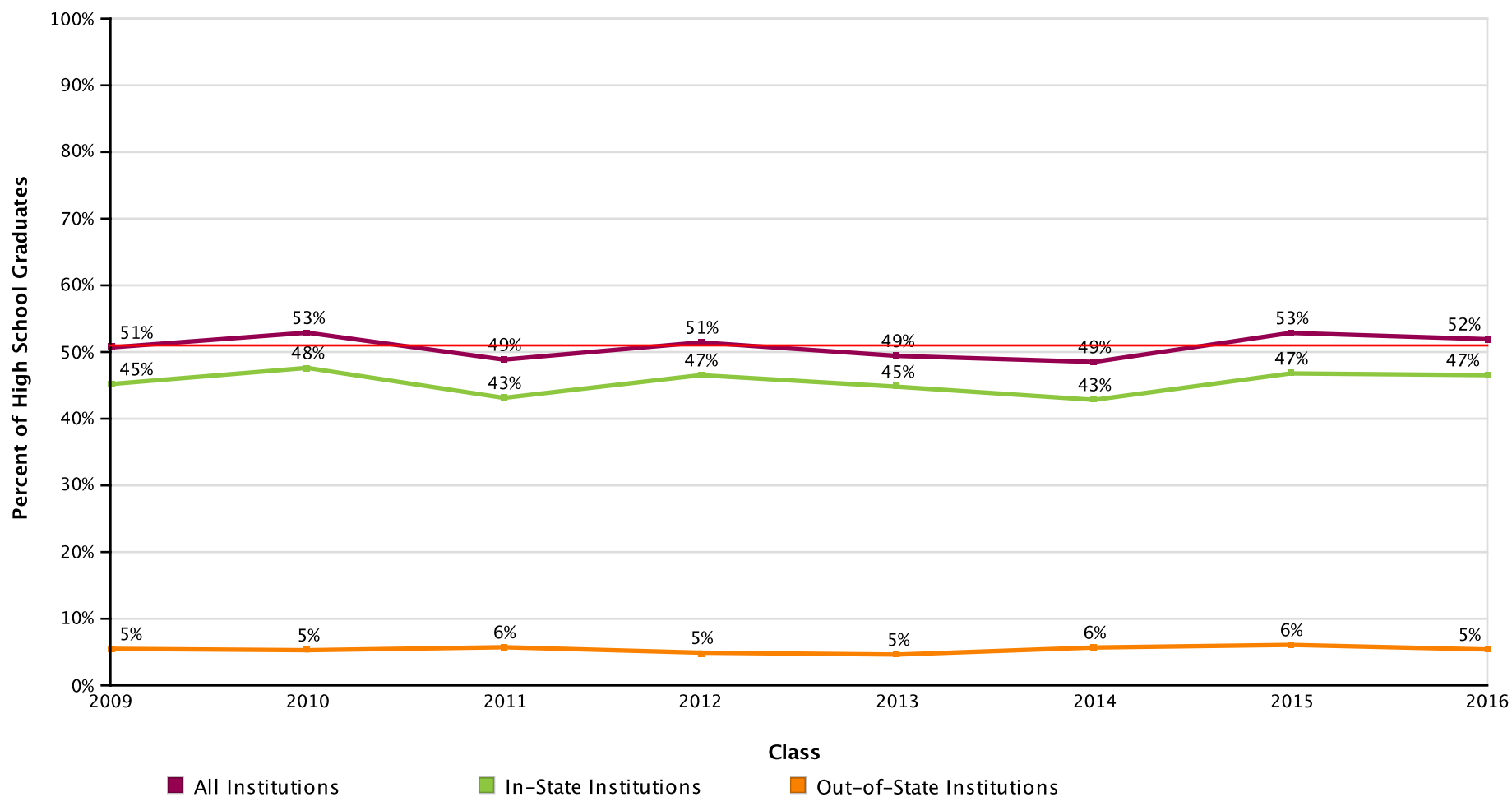
Page 4 of 45

NATIONAL STUDENT
CLEARINGHOUSE

©2012 National Student Clearinghouse. All rights reserved.

Percent of Students Enrolled in College the Fall Immediately After High School by Institutional Location

Effective Date = April 6, 2017



AVG = 51%

DALLAS INDEPENDENT SCHOOL DISTRICT

Report Run Date: 04/11/2017 08:47 PM

Page 5 of 45

NATIONAL STUDENT
CLEARINGHOUSE

©2012 National Student Clearinghouse. All rights reserved.

Count of Students Enrolled in College the Fall Immediately After High School

Effective Date = April 6, 2017

Class of	2009	2010	2011	2012	2013	2014	2015	2016
Total in the Class	6,452	7,047	7,209	7,208	7,695	7,350	7,424	7,461
Total Enrolled	3,270	3,728	3,522	3,708	3,803	3,566	3,925	3,874
Total in Public	2,890	3,341	3,121	3,343	3,474	3,141	3,495	3,449
Total in Private	380	387	401	365	329	425	430	425
Total in 4-Year	1,582	1,834	1,731	1,775	1,724	1,822	1,989	1,954
Total in 2-Year	1,688	1,894	1,791	1,933	2,079	1,744	1,936	1,920
Total In-State	2,916	3,356	3,109	3,354	3,447	3,148	3,474	3,472
Total Out-of-State	354	372	413	354	356	418	451	402

DALLAS INDEPENDENT SCHOOL DISTRICT

Report Run Date: 04/11/2017 08:47 PM

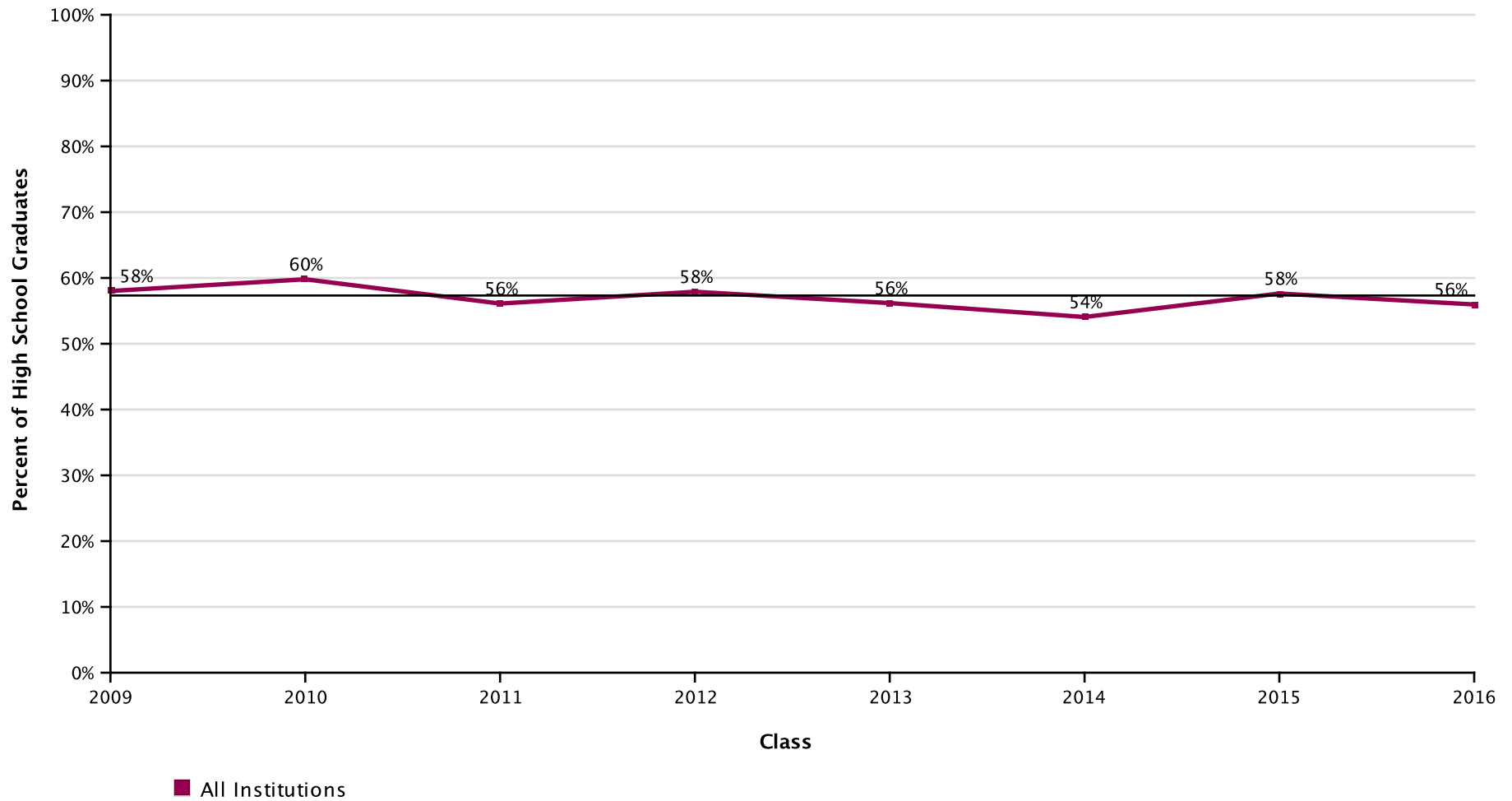
Page 6 of 45

**NATIONAL STUDENT
CLEARINGHOUSE**

©2012 National Student Clearinghouse. All rights reserved.

Percent of Students Enrolled in College at Any Time During the First Year After High School

Effective Date = April 6, 2017



AVG = 57%

DALLAS INDEPENDENT SCHOOL DISTRICT

Report Run Date: 04/11/2017 08:47 PM

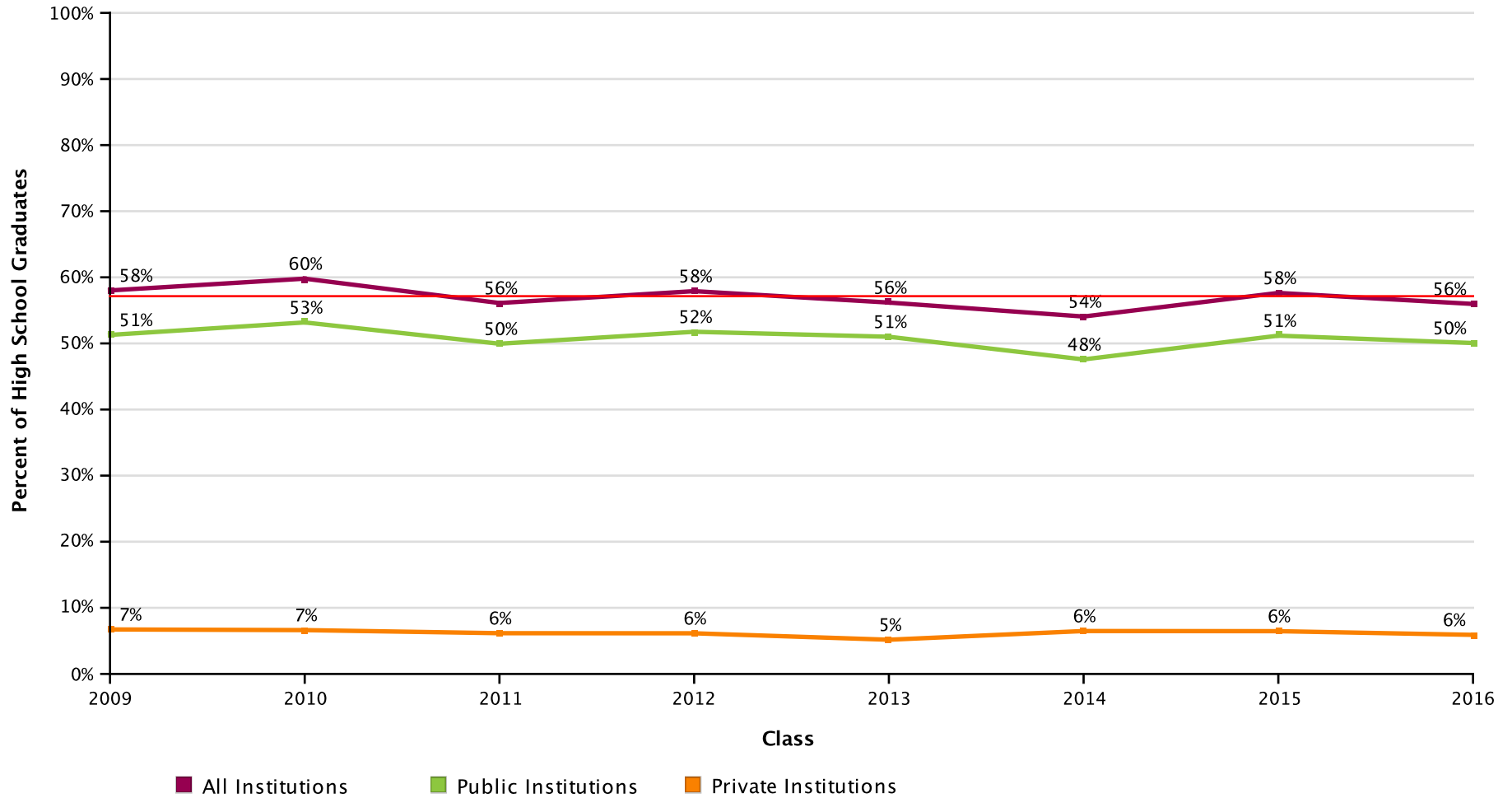
Page 7 of 45

**NATIONAL STUDENT
CLEARINGHOUSE**

©2012 National Student Clearinghouse. All rights reserved.

Percent of Students Enrolled in College at Any Time During the First Year After High School by Institutional Type

Effective Date = April 6, 2017



AVG = 57%

DALLAS INDEPENDENT SCHOOL DISTRICT

Report Run Date: 04/11/2017 08:47 PM

Page 8 of 45

NATIONAL STUDENT
CLEARINGHOUSE®

©2012 National Student Clearinghouse. All rights reserved.

Percent of Students Enrolled in College at Any Time During the First Year After High School by Institutional Level

Effective Date = April 6, 2017



AVG = 57%

DALLAS INDEPENDENT SCHOOL DISTRICT

Report Run Date: 04/11/2017 08:47 PM

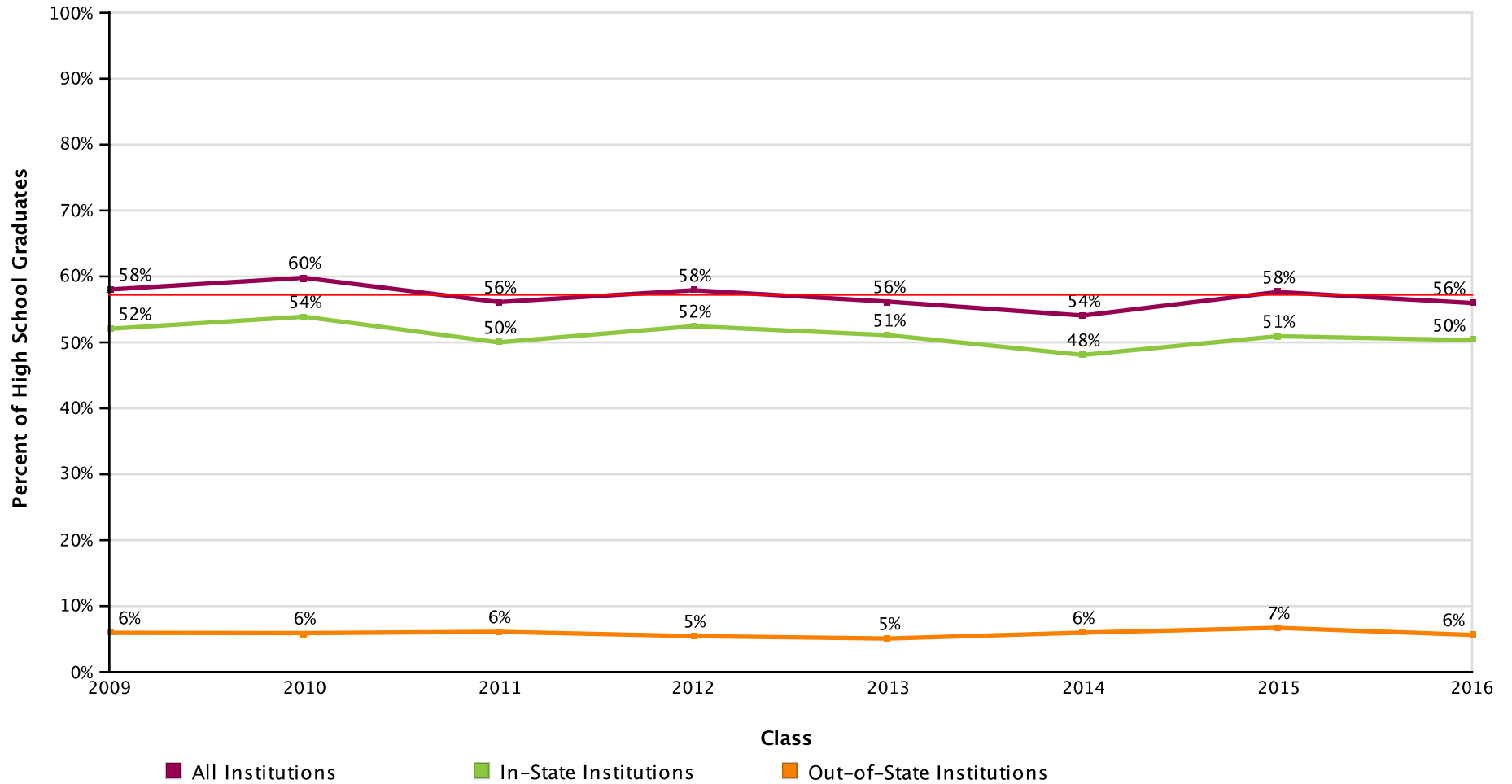
Page 9 of 45

NATIONAL STUDENT
CLEARINGHOUSE

©2012 National Student Clearinghouse. All rights reserved.

Percent of Students Enrolled in College at Any Time During the First Year After High School by Institutional Location

Effective Date = April 6, 2017



AVG = 57%

DALLAS INDEPENDENT SCHOOL DISTRICT

Report Run Date: 04/11/2017 08:47 PM

Page 10 of 45

NATIONAL STUDENT
CLEARINGHOUSE

©2012 National Student Clearinghouse. All rights reserved.

Count of Students Enrolled in College at Any Time During the First Year After High School

Effective Date = April 6, 2017

Class of	2009	2010	2011	2012	2013	2014	2015	2016
Total in the Class	6,452	7,047	7,209	7,208	7,695	7,350	7,424	7,461
Total Enrolled	3,743	4,214	4,045	4,174	4,323	3,974	4,279	4,176
Total in Public	3,309	3,747	3,601	3,731	3,925	3,497	3,799	3,735
Total in Private	434	467	444	443	398	477	480	441
Total in 4-Year	1,681	1,923	1,798	1,856	1,801	1,888	2,087	2,009
Total in 2-Year	2,062	2,291	2,247	2,318	2,522	2,086	2,192	2,167
Total In-State	3,359	3,798	3,605	3,781	3,932	3,535	3,781	3,756
Total Out-Of-State	384	416	440	393	391	439	498	420

DALLAS INDEPENDENT SCHOOL DISTRICT

Report Run Date: 04/11/2017 08:47 PM

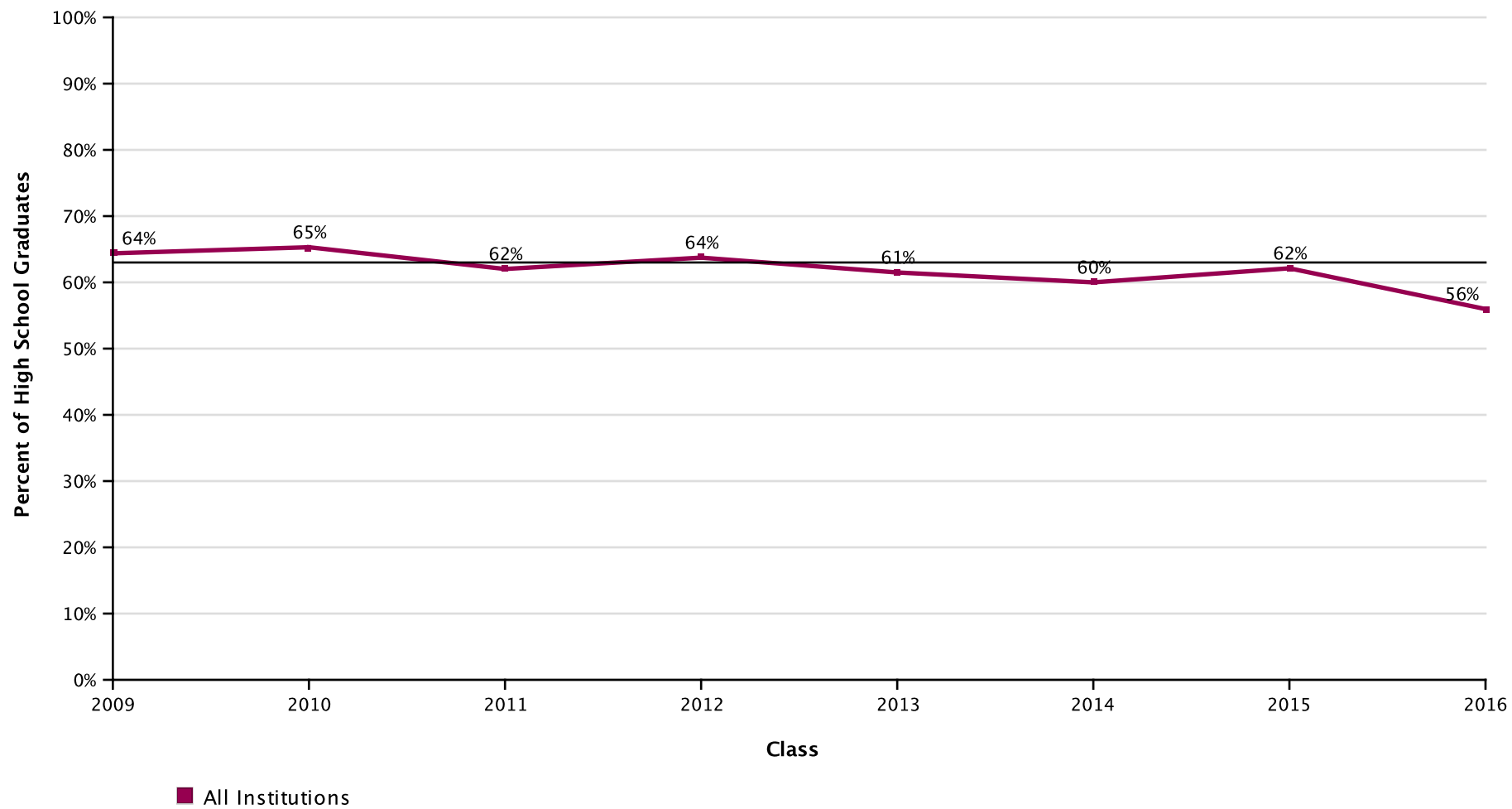
Page 11 of 45

**NATIONAL STUDENT
CLEARINGHOUSE**

©2012 National Student Clearinghouse. All rights reserved.

Percent of Students Enrolled in College at Any Time During the First Two Years After High School

Effective Date = April 6, 2017



AVG = 63%

DALLAS INDEPENDENT SCHOOL DISTRICT

Report Run Date: 04/11/2017 08:47 PM

Page 12 of 45

NATIONAL STUDENT
CLEARINGHOUSE

©2012 National Student Clearinghouse. All rights reserved.

Percent of Students Enrolled in College at Any Time During the First Two Years After High School by Institutional Type

Effective Date = April 6, 2017



AVG = 63%

DALLAS INDEPENDENT SCHOOL DISTRICT

Report Run Date: 04/11/2017 08:47 PM

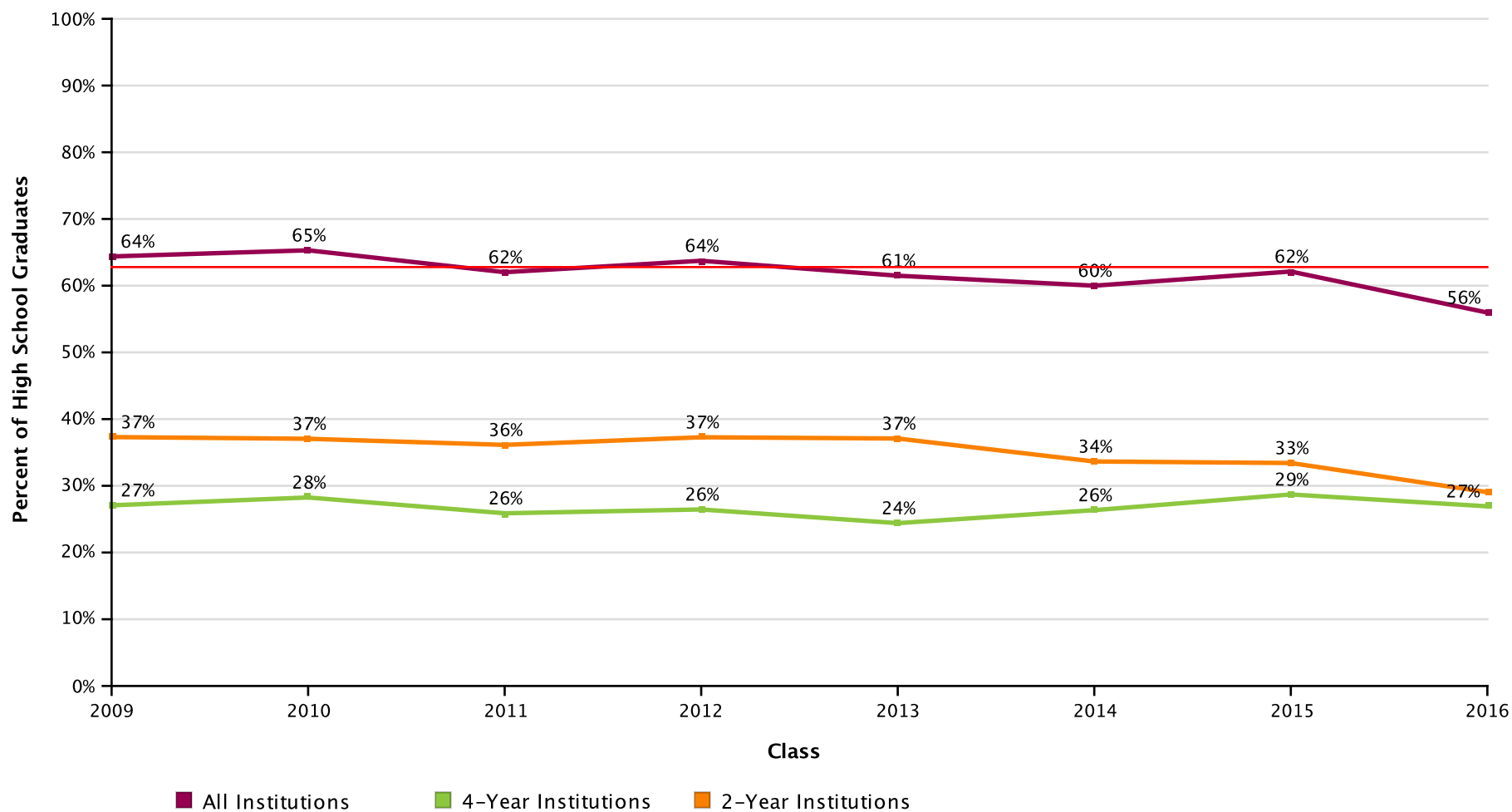
Page 13 of 45

NATIONAL STUDENT
CLEARINGHOUSE

©2012 National Student Clearinghouse. All rights reserved.

Percent of Students Enrolled in College at Any Time During the First Two Years After High School by Institutional Level

Effective Date = April 6, 2017



AVG = 63%

DALLAS INDEPENDENT SCHOOL DISTRICT

Report Run Date: 04/11/2017 08:47 PM

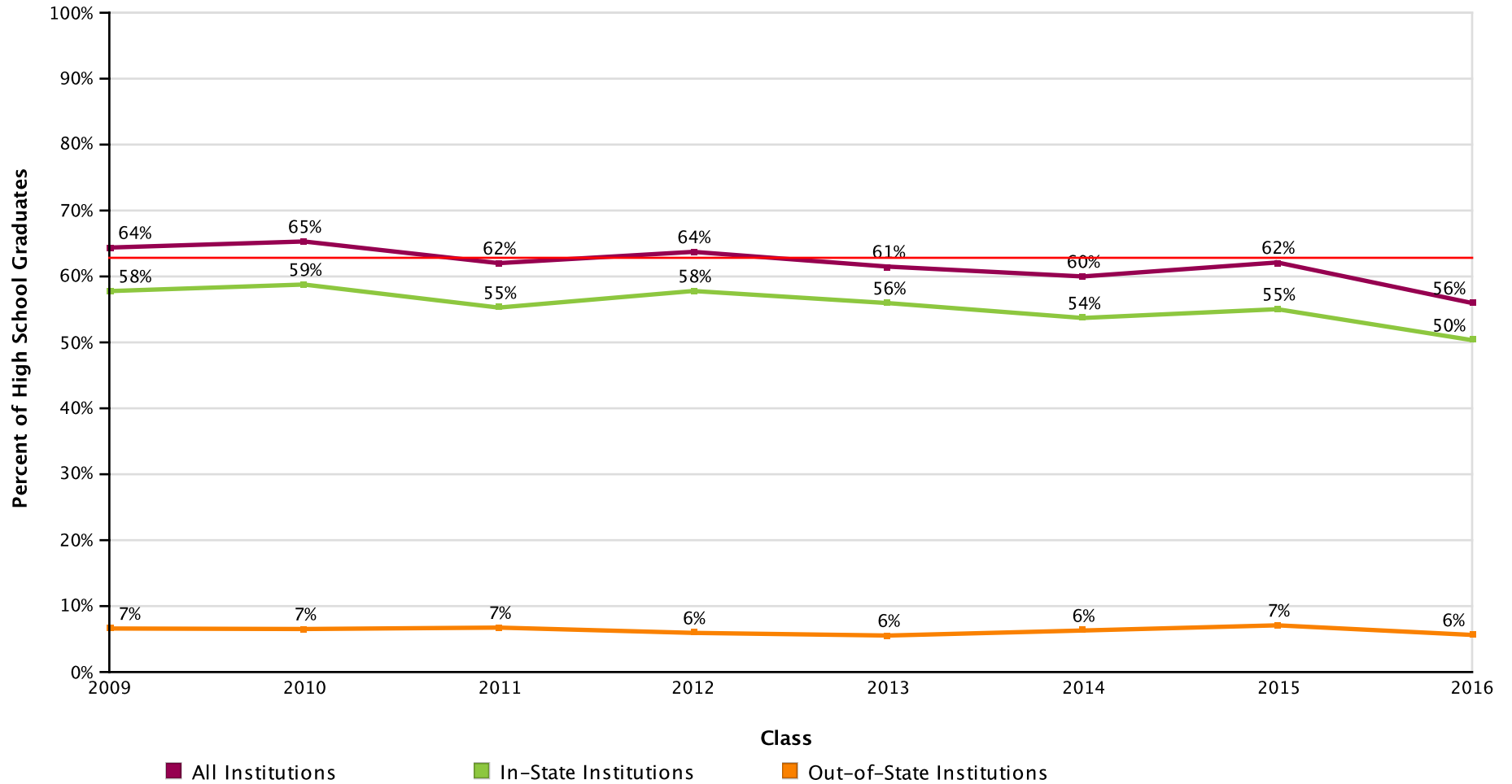
Page 14 of 45

NATIONAL STUDENT
CLEARINGHOUSE

©2012 National Student Clearinghouse. All rights reserved.

Percent of Students Enrolled in College at Any Time During the First Two Years After High School by Institutional Location

Effective Date = April 6, 2017



AVG = 63%

DALLAS INDEPENDENT SCHOOL DISTRICT

Report Run Date: 04/11/2017 08:47 PM

Page 15 of 45

NATIONAL STUDENT
CLEARINGHOUSE

©2012 National Student Clearinghouse. All rights reserved.

Count of Students Enrolled in College at Any Time During the First Two Years After High School

Effective Date = April 6, 2017

Class of	2009	2010	2011	2012	2013	2014	2015	2016
Total in the Class	6,452	7,047	7,209	7,208	7,695	7,350	7,424	7,461
Total Enrolled	4,154	4,602	4,471	4,594	4,732	4,410	4,612	4,176
Total in Public	3,647	4,070	3,952	4,091	4,267	3,905	4,115	3,735
Total in Private	507	532	519	503	465	505	497	441
Total in 4-Year	1,747	1,991	1,866	1,907	1,878	1,937	2,131	2,009
Total in 2-Year	2,407	2,611	2,605	2,687	2,854	2,473	2,481	2,167
Total In-State	3,728	4,142	3,985	4,166	4,306	3,947	4,086	3,756
Total Out-of-State	426	460	486	428	426	463	526	420

DALLAS INDEPENDENT SCHOOL DISTRICT

Report Run Date: 04/11/2017 08:47 PM

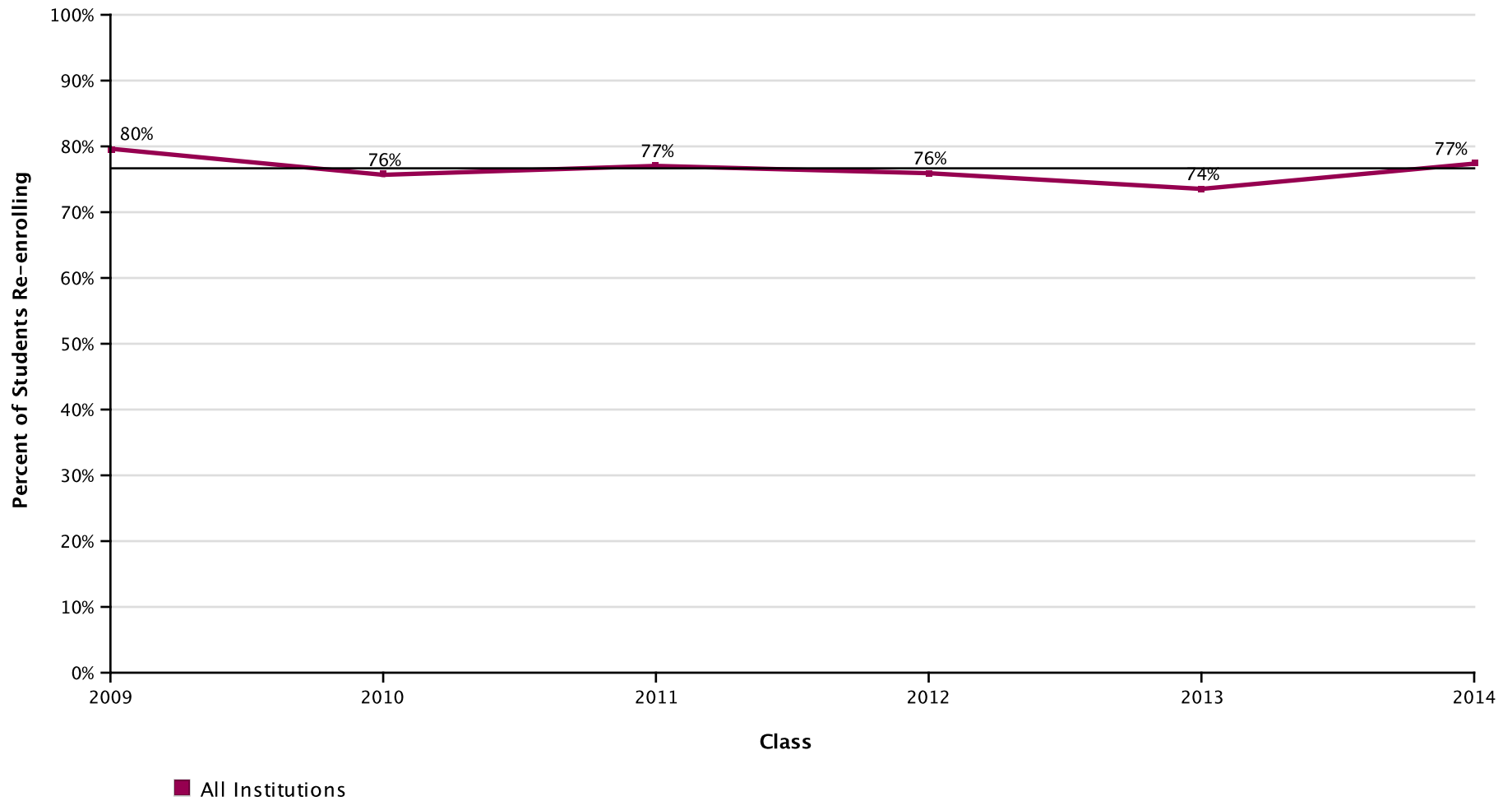
Page 16 of 45

**NATIONAL STUDENT
CLEARINGHOUSE**

©2012 National Student Clearinghouse. All rights reserved.

Percent of Students Enrolled in College the First Year After High School Who Returned for a Second Year (Freshman to Sophomore Persistence)

Effective Date = April 6, 2017



AVG = 76%

DALLAS INDEPENDENT SCHOOL DISTRICT

Report Run Date: 04/11/2017 08:47 PM

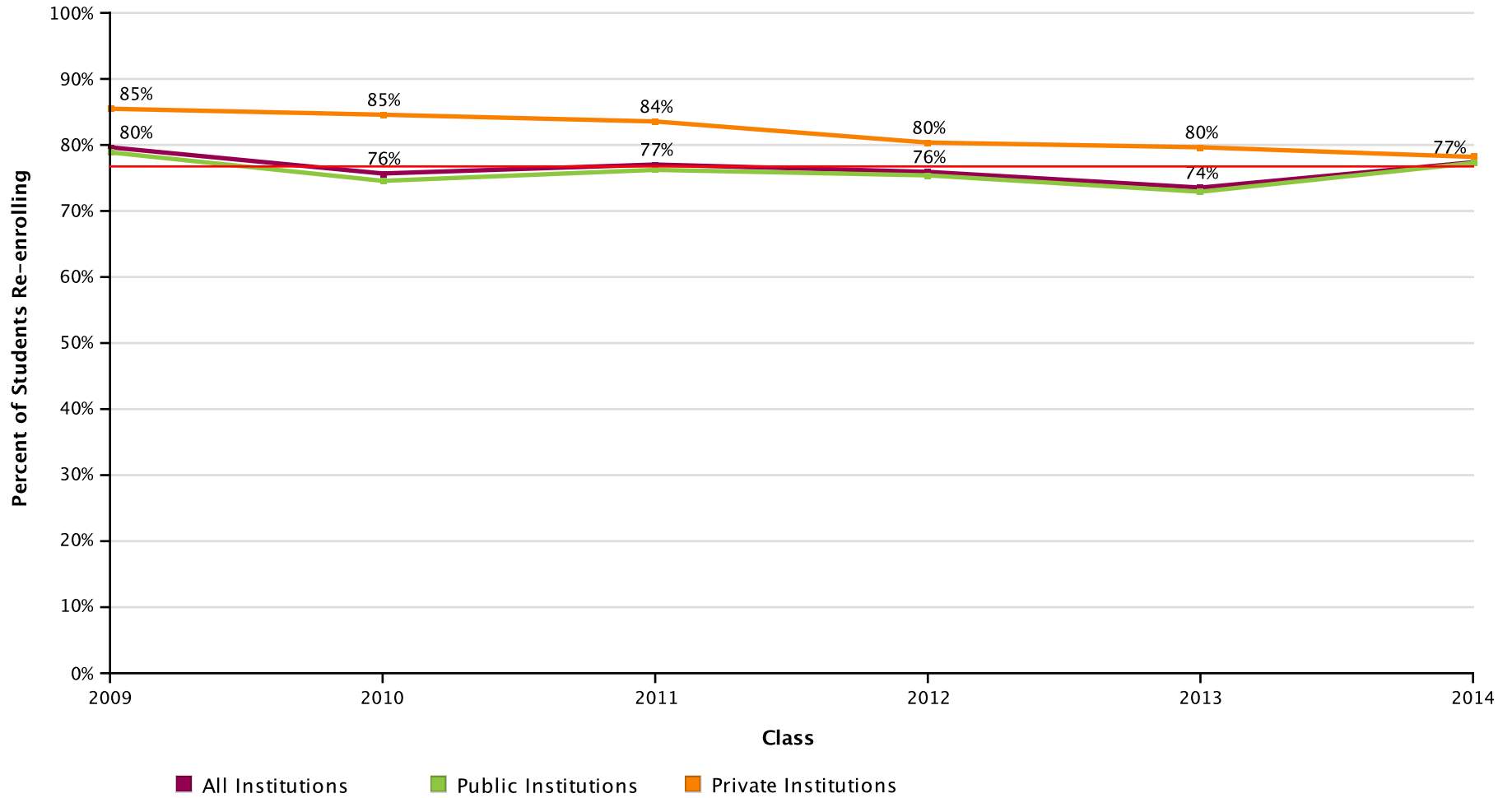
Page 17 of 45

NATIONAL STUDENT
CLEARINGHOUSE

©2012 National Student Clearinghouse. All rights reserved.

Percent of Students Enrolled in College the First Year After High School Who Returned for a Second Year (Freshman to Sophomore Persistence) by Institutional Type

Effective Date = April 6, 2017



AVG = 76%

DALLAS INDEPENDENT SCHOOL DISTRICT

Report Run Date: 04/11/2017 08:47 PM

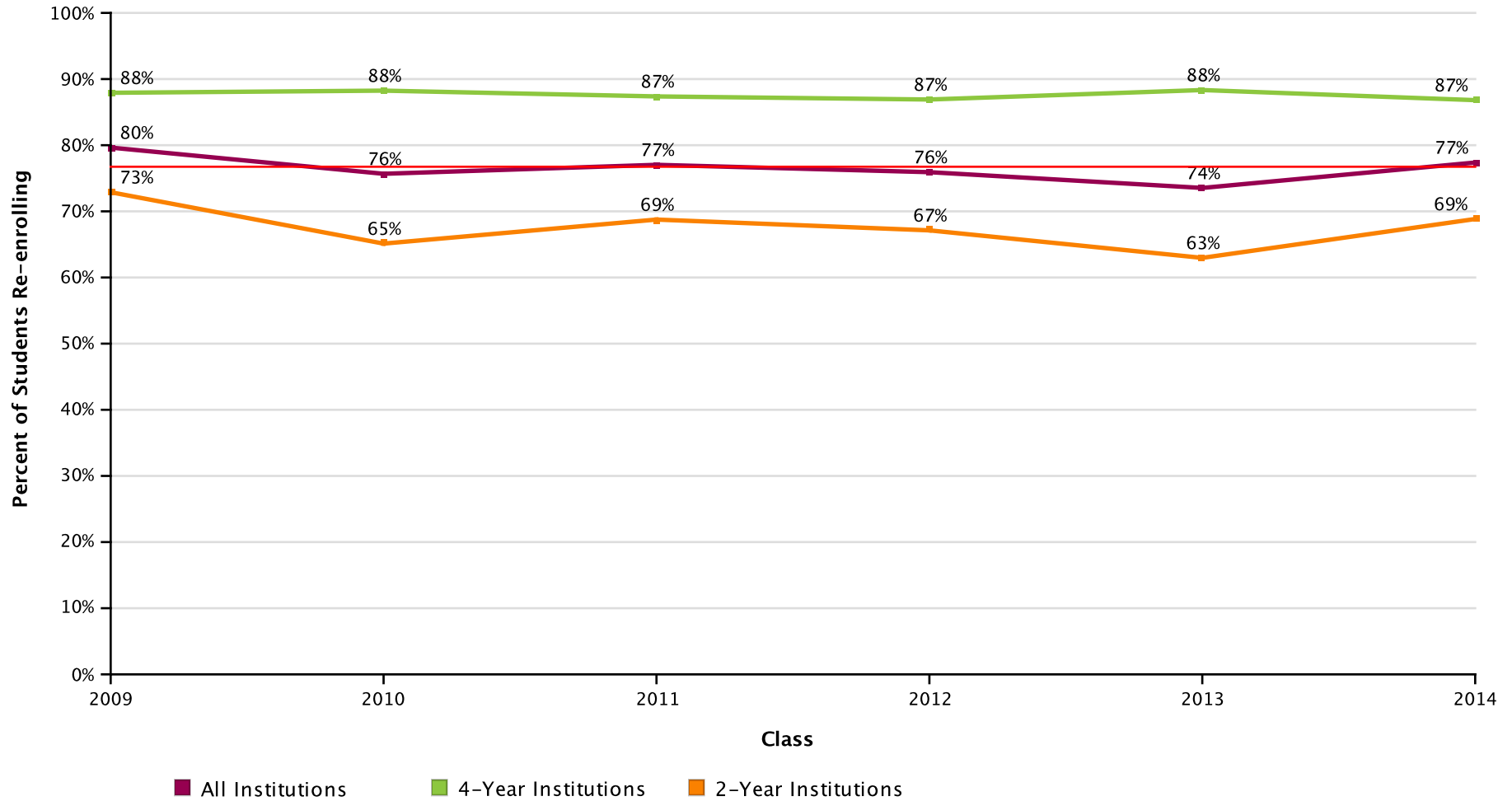
Page 18 of 45

NATIONAL STUDENT
CLEARINGHOUSE

©2012 National Student Clearinghouse. All rights reserved.

Percent of Students Enrolled in College the First Year After High School Who Returned for a Second Year (Freshman to Sophomore Persistence) by Institutional Level

Effective Date = April 6, 2017



DALLAS INDEPENDENT SCHOOL DISTRICT

Report Run Date: 04/11/2017 08:47 PM

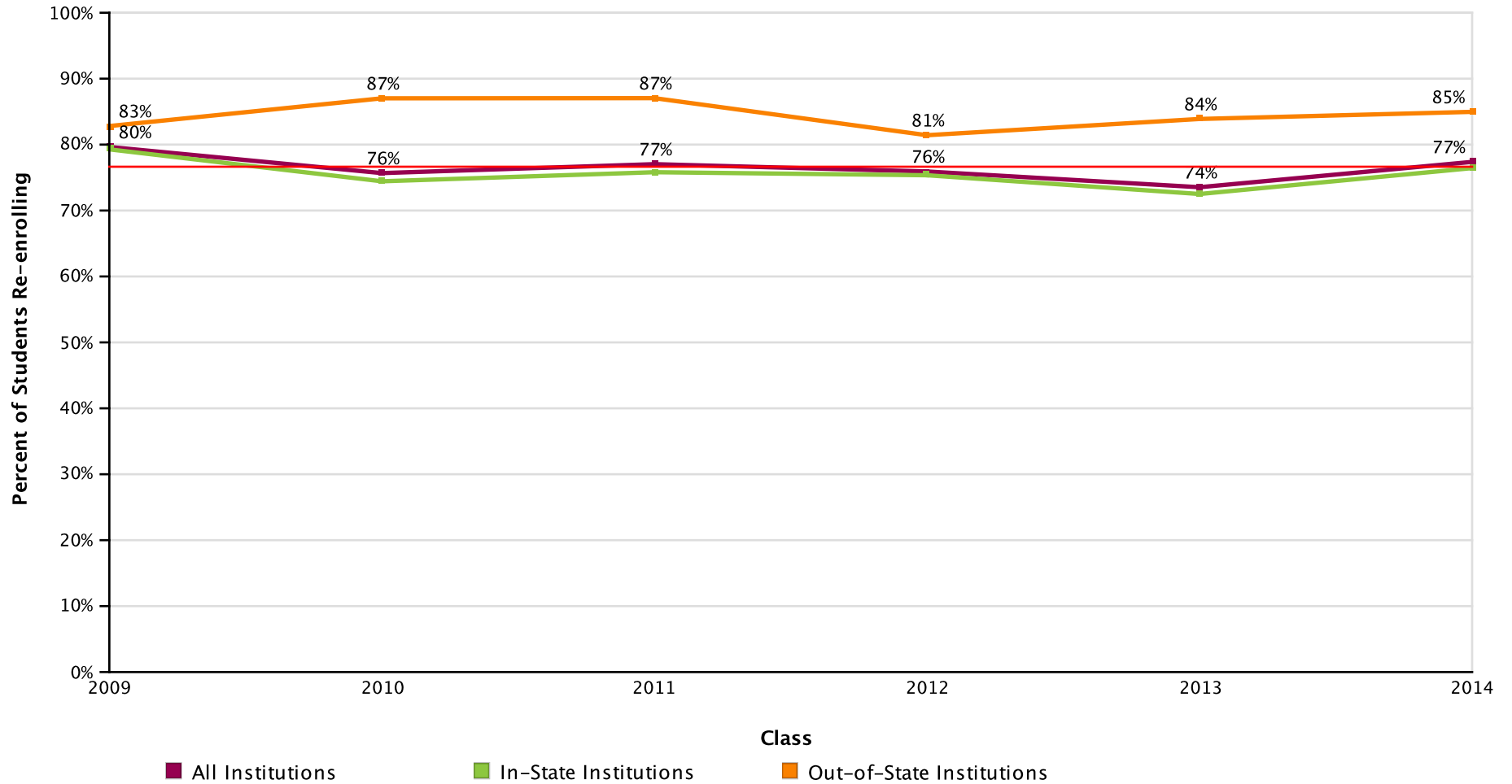
Page 19 of 45

**NATIONAL STUDENT
CLEARINGHOUSE**

©2012 National Student Clearinghouse. All rights reserved.

Percent of Students Enrolled in College the First Year After High School Who Returned for a Second Year (Freshman to Sophomore Persistence) by Institutional Location

Effective Date = April 6, 2017



AVG = 76%

DALLAS INDEPENDENT SCHOOL DISTRICT

Report Run Date: 04/11/2017 08:47 PM

Page 20 of 45

NATIONAL STUDENT
CLEARINGHOUSE

©2012 National Student Clearinghouse. All rights reserved.

**Count of Students Enrolled in College the First Year After High School Who Returned
for a Second Year (Freshman to Sophomore Persistence)**

Effective Date = April 6, 2017

Class of	2009	2010	2011	2012	2013	2014
Total in the Class	6,452	7,047	7,209	7,208	7,695	7,350
Enrolled Anywhere 1st Year	3,743	4,214	4,045	4,174	4,323	3,974
Enrolled Anywhere 2nd Year	2,981	3,189	3,116	3,169	3,179	3,075
In Public 1st Year	3,309	3,747	3,601	3,731	3,925	3,497
Enrolled Anywhere 2nd Year	2,610	2,794	2,745	2,813	2,862	2,702
In Private 1st Year	434	467	444	443	398	477
Enrolled Anywhere 2nd Year	371	395	371	356	317	373
In 4-Year 1st Year	1,681	1,923	1,798	1,856	1,801	1,888
Enrolled Anywhere 2nd Year	1,478	1,697	1,571	1,613	1,591	1,639
In 2-Year 1st Year	2,062	2,291	2,247	2,318	2,522	2,086
Enrolled Anywhere 2nd Year	1,503	1,492	1,545	1,556	1,588	1,436
In-State 1st Year	3,359	3,798	3,605	3,781	3,932	3,535
Enrolled Anywhere 2nd Year	2,663	2,827	2,733	2,849	2,851	2,702
Out-of-State 1st Year	384	416	440	393	391	439
Enrolled Anywhere 2nd Year	318	362	383	320	328	373

DALLAS INDEPENDENT SCHOOL DISTRICT

Report Run Date: 04/11/2017 08:47 PM

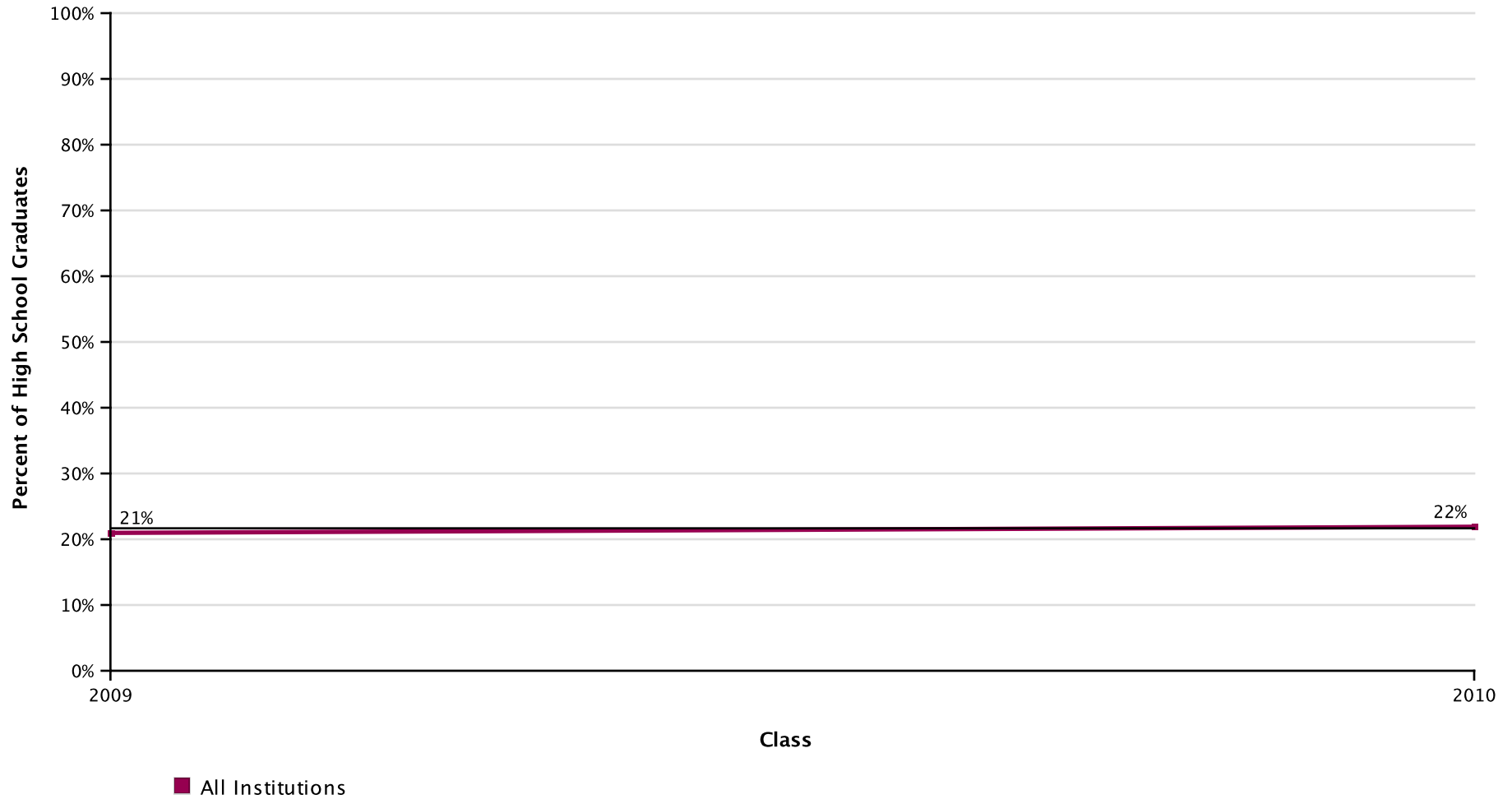
Page 21 of 45

**NATIONAL STUDENT
CLEARINGHOUSE**

©2012 National Student Clearinghouse. All rights reserved.

Percent of High School Class Who Completed a Degree Within Six Years

Effective Date = April 6, 2017



AVG = 21%

DALLAS INDEPENDENT SCHOOL DISTRICT

Report Run Date: 04/11/2017 08:47 PM

Page 22 of 45

**NATIONAL STUDENT
CLEARINGHOUSE**

©2012 National Student Clearinghouse. All rights reserved.

Percent of High School Class Who Completed a Degree Within Six Years by Institutional Type

Effective Date = April 6, 2017



AVG = 21%

DALLAS INDEPENDENT SCHOOL DISTRICT

Report Run Date: 04/11/2017 08:47 PM

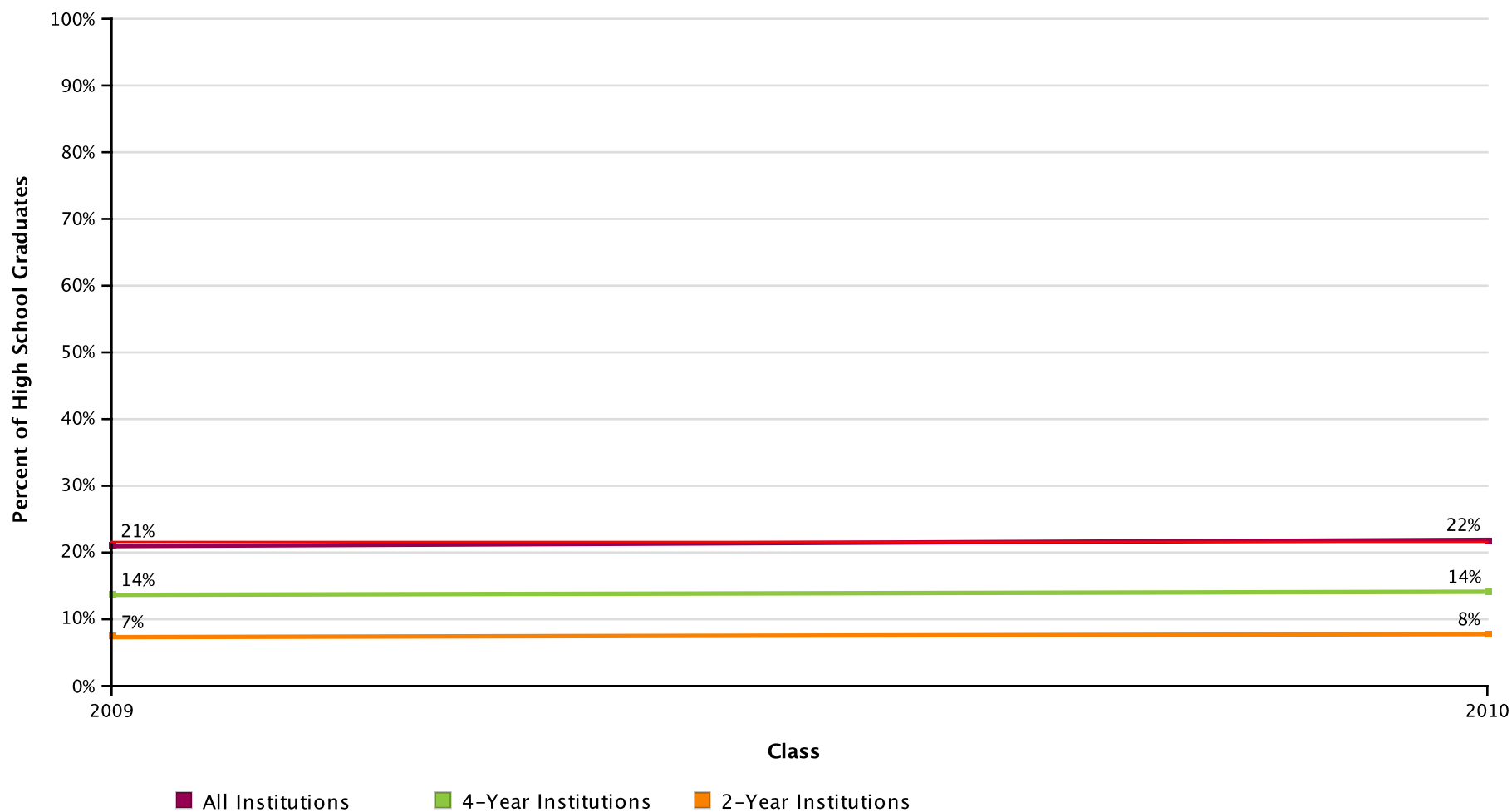
Page 23 of 45

NATIONAL STUDENT
CLEARINGHOUSE

©2012 National Student Clearinghouse. All rights reserved.

Percent of High School Class Who Completed a Degree Within Six Years by Institutional Level

Effective Date = April 6, 2017



AVG = 21%

DALLAS INDEPENDENT SCHOOL DISTRICT

Report Run Date: 04/11/2017 08:47 PM

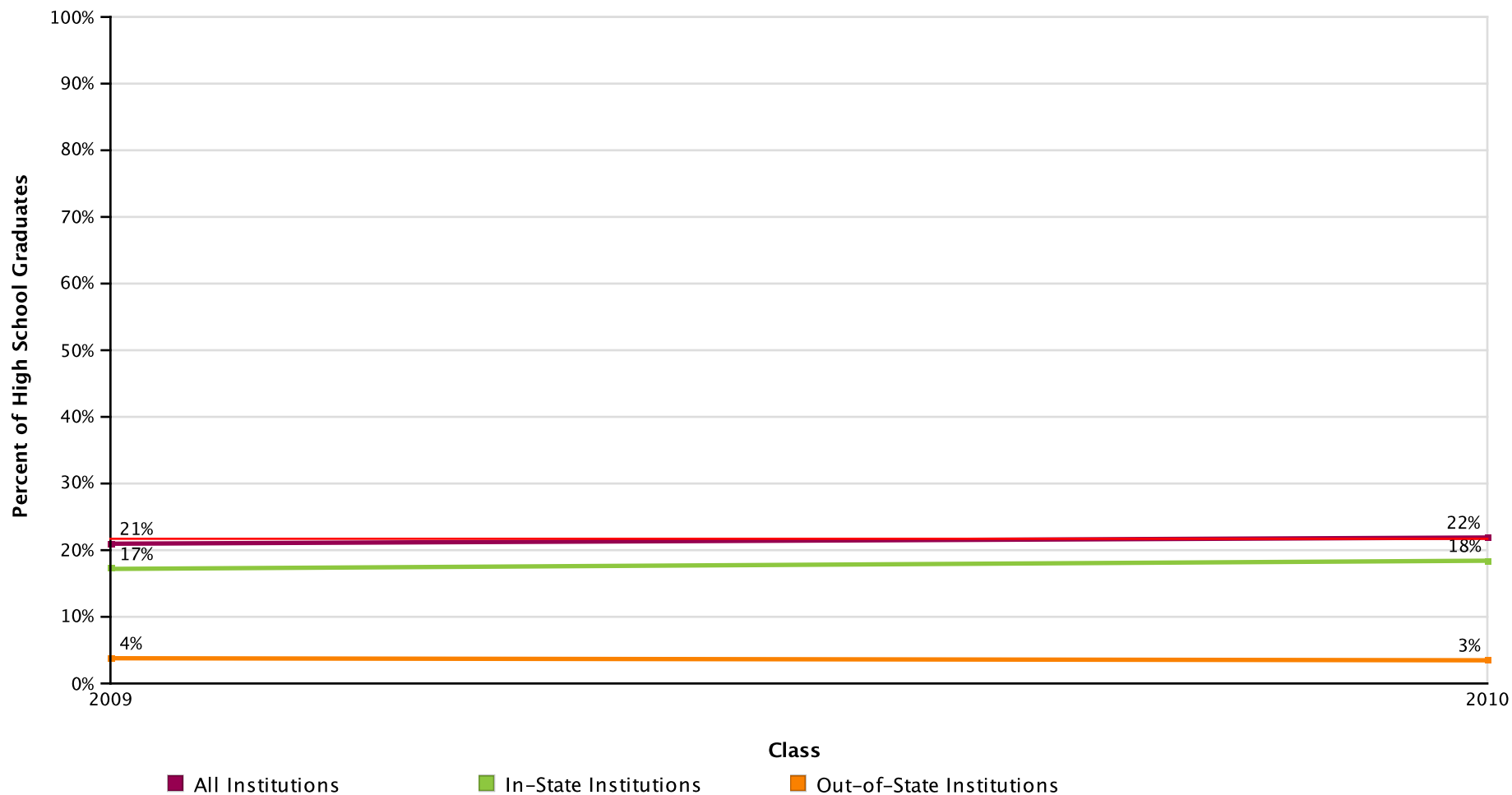
Page 24 of 45

**NATIONAL STUDENT
CLEARINGHOUSE**

©2012 National Student Clearinghouse. All rights reserved.

Percent of High School Class Who Completed a Degree Within Six Years by Institutional Location

Effective Date = April 6, 2017



AVG = 21%

DALLAS INDEPENDENT SCHOOL DISTRICT

Report Run Date: 04/11/2017 08:47 PM

Page 25 of 45

**NATIONAL STUDENT
CLEARINGHOUSE**

©2012 National Student Clearinghouse. All rights reserved.

Count of High School Graduates with a College Degree

Effective Date = April 6, 2017

Class of	2009	2010
Total in the Class	6,452	7,047
Total With a Degree	1,353	1,543
Total from Public	1,025	1,162
Total from Private	328	381
Total from 4-Year	881	995
Total from 2-Year	472	548
Total In-State	1,109	1,298
Total Out-Of-State	244	245

DALLAS INDEPENDENT SCHOOL DISTRICT

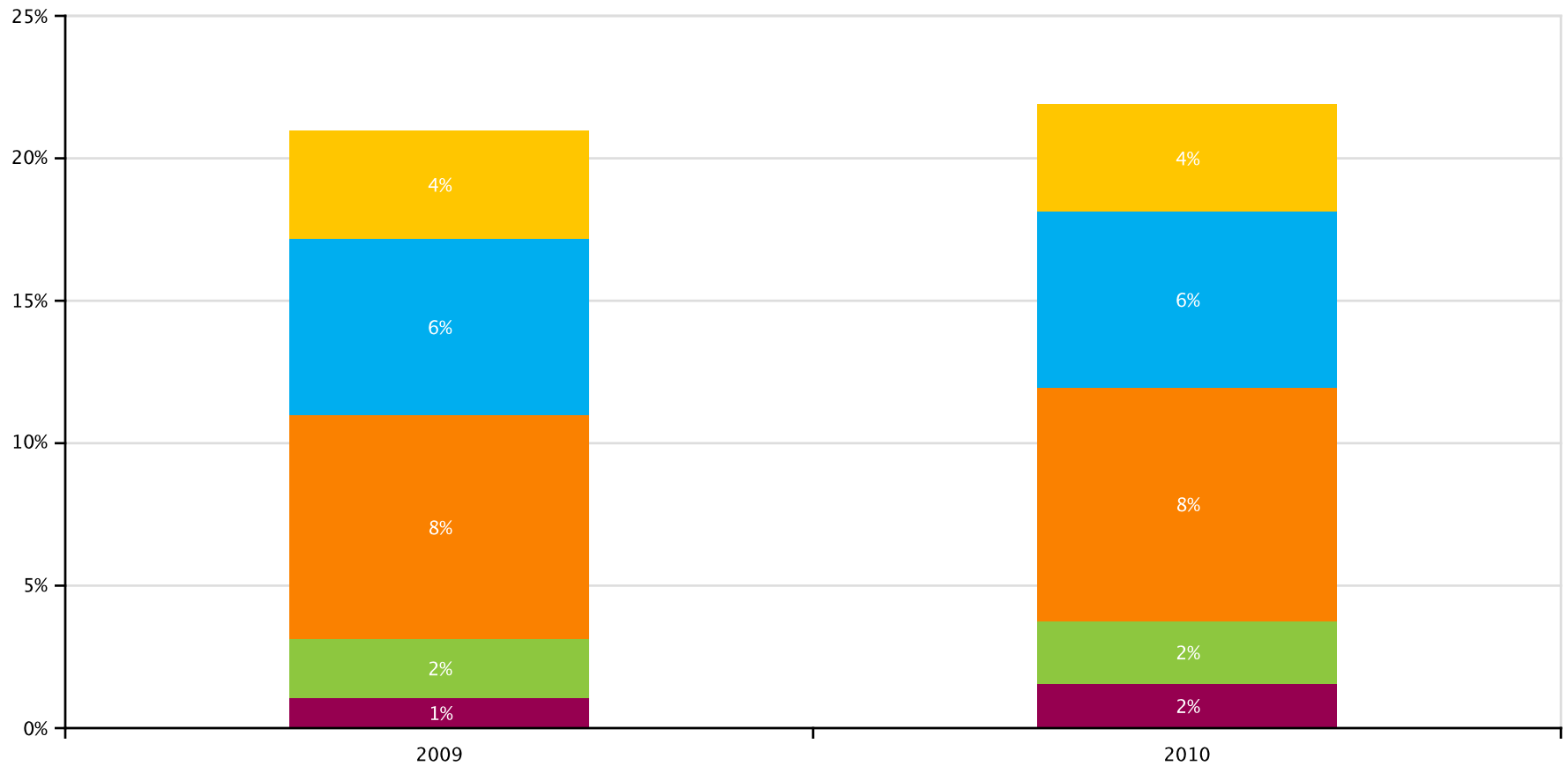
Report Run Date: 04/11/2017 08:47 PM

Page 26 of 45

**NATIONAL STUDENT
CLEARINGHOUSE**

©2012 National Student Clearinghouse. All rights reserved.

Time to College Graduation Within Six Years (Associate's, Bachelor's and Higher)



Graduated in 2 Years or Less Graduated in 3 Years Graduated in 4 Years Graduated in 5 Years
Graduated in 6 Years

DALLAS INDEPENDENT SCHOOL DISTRICT

Report Run Date: 04/11/2017 08:47 PM

Page 27 of 45

**NATIONAL STUDENT
CLEARINGHOUSE**

©2012 National Student Clearinghouse. All rights reserved.

Count of Time to College Graduation within Six Years

Class of	2009	2010
Total In the Class	6,452	7,047
Graduated in 2 Years or Less	69	110
Graduated in 3 Years	133	155
Graduated in 4 Years	506	578
Graduated in 5 Years	401	434
Graduated in 6 Years	244	266

DALLAS INDEPENDENT SCHOOL DISTRICT

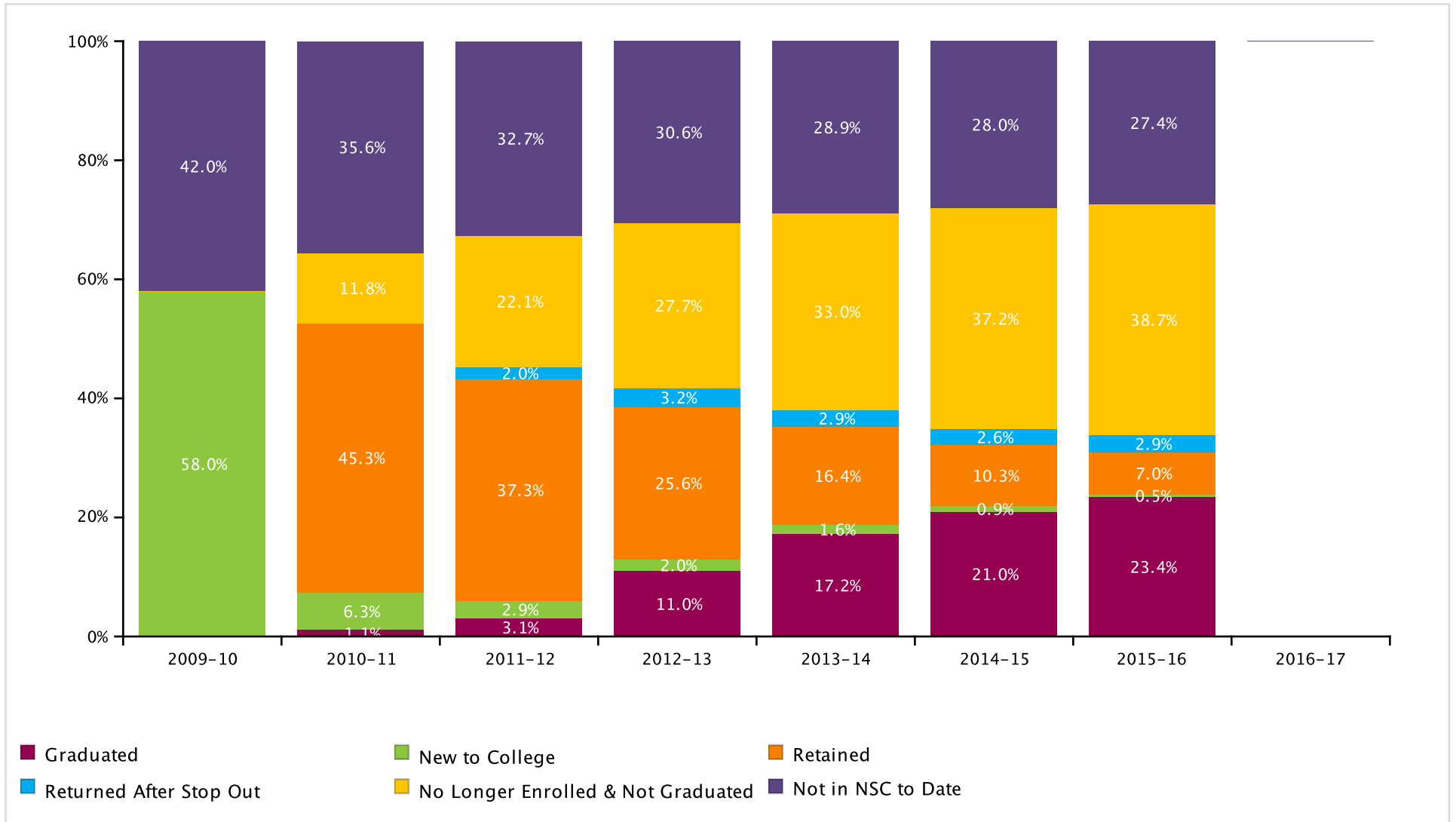
Report Run Date: 04/11/2017 08:47 PM

Page 28 of 45

**NATIONAL STUDENT
CLEARINGHOUSE**

©2012 National Student Clearinghouse. All rights reserved.

Class of 2009 Postsecondary Enrollment and Progress



DALLAS INDEPENDENT SCHOOL DISTRICT

Report Run Date: 04/11/2017 08:47 PM

Page 29 of 45

**NATIONAL STUDENT
CLEARINGHOUSE**

©2012 National Student Clearinghouse. All rights reserved.

Count of Class 2009 Postsecondary Enrollment and Progress

Total in the Class: 6,452

Academic Years	2009-10	2010-11	2011-12	2012-13	2013-14	2014-15	2015-16	2016-17
New to College	3740	404	184	126	102	60	33	0
Retained	0	2920	2404	1650	1055	667	453	0
Returned After Stop Out	0	0	130	208	187	166	188	0
No Longer Enrolled & Not Graduated	0	761	1424	1784	2132	2402	2500	0
Graduated	3	69	202	708	1109	1353	1509	0
Not in NSC to Date	2709	2298	2108	1976	1867	1804	1769	0

DALLAS INDEPENDENT SCHOOL DISTRICT

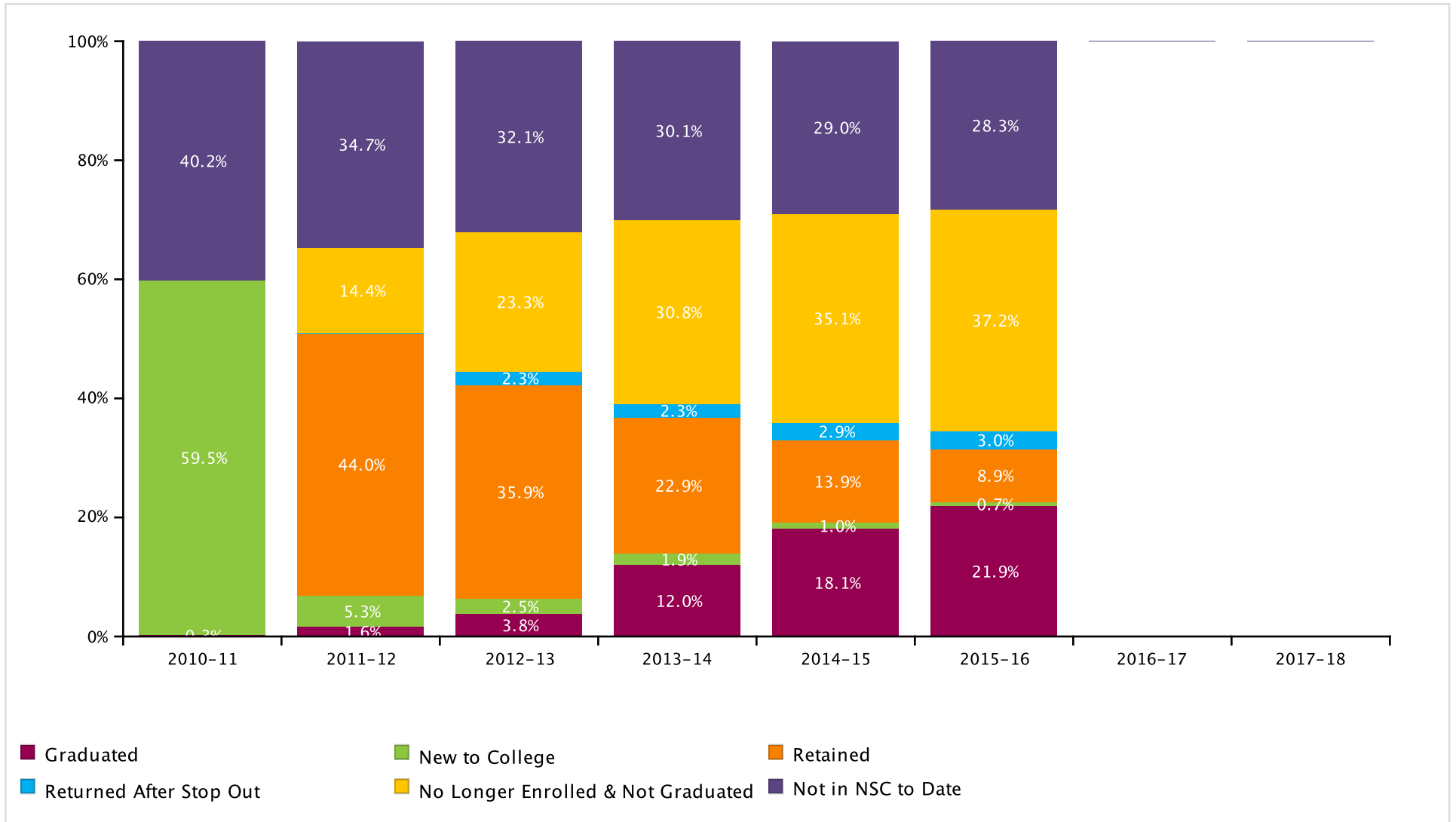
Report Run Date: 04/11/2017 08:47 PM

Page 30 of 45

**NATIONAL STUDENT
CLEARINGHOUSE**

©2012 National Student Clearinghouse. All rights reserved.

Class of 2010 Postsecondary Enrollment and Progress



DALLAS INDEPENDENT SCHOOL DISTRICT

Report Run Date: 04/11/2017 08:47 PM

Page 31 of 45

**NATIONAL STUDENT
CLEARINGHOUSE**

©2012 National Student Clearinghouse. All rights reserved.

Count of Class 2010 Postsecondary Enrollment and Progress

Total in the Class: 7,047

Academic Years	2010-11	2011-12	2012-13	2013-14	2014-15	2015-16	2016-17	2017-18
New to College	4193	377	176	132	73	51	0	0
Retained	0	3100	2532	1614	977	628	0	0
Returned After Stop Out	0	0	164	164	205	210	0	0
No Longer Enrolled & Not Graduated	0	1015	1645	2171	2470	2623	0	0
Graduated	21	110	265	843	1277	1543	0	0
Not in NSC to Date	2833	2445	2265	2123	2045	1992	0	0

DALLAS INDEPENDENT SCHOOL DISTRICT

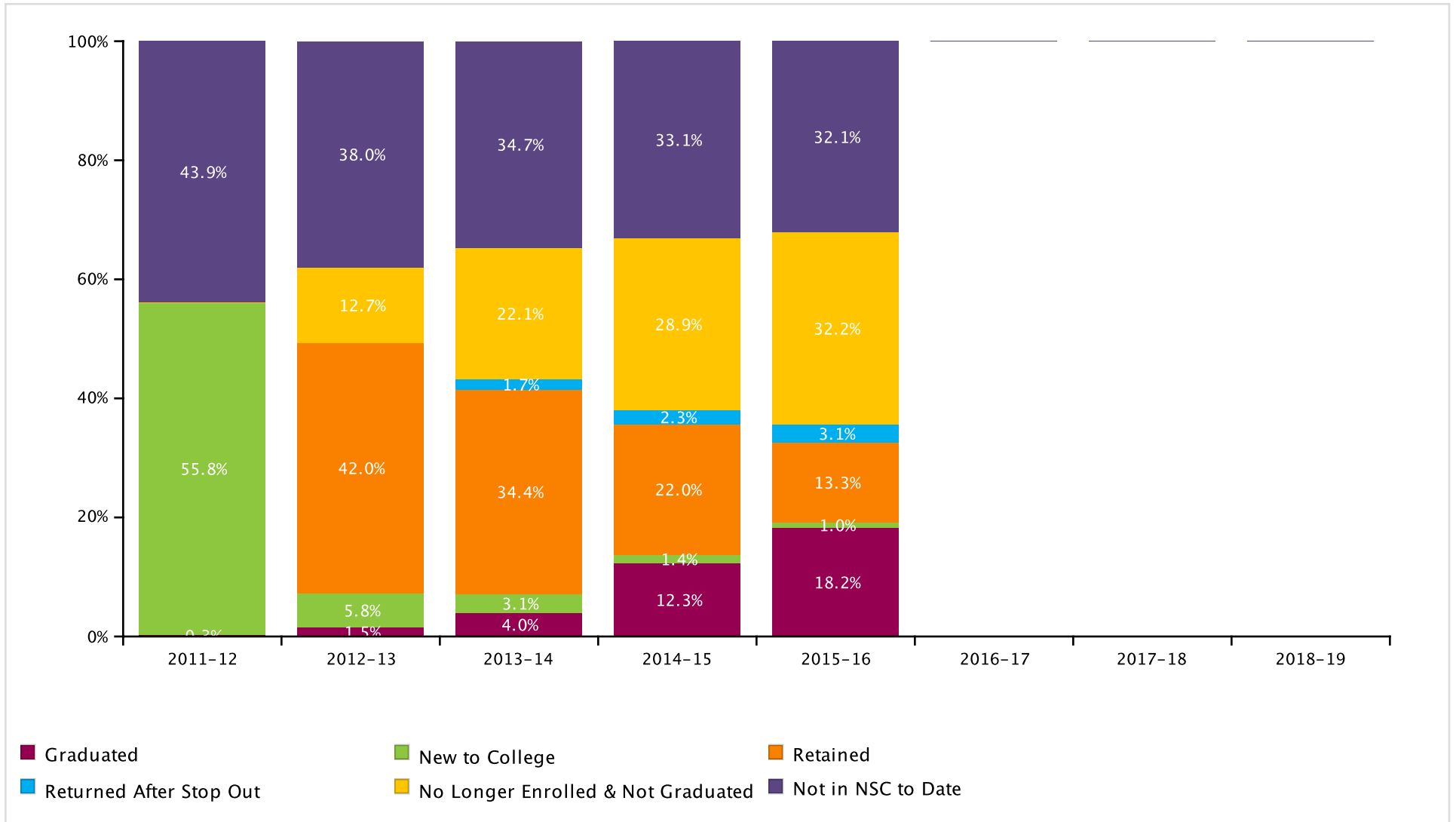
Report Run Date: 04/11/2017 08:47 PM

Page 32 of 45

**NATIONAL STUDENT
CLEARINGHOUSE**

©2012 National Student Clearinghouse. All rights reserved.

Class of 2011 Postsecondary Enrollment and Progress



DALLAS INDEPENDENT SCHOOL DISTRICT

Report Run Date: 04/11/2017 08:47 PM

Page 33 of 45

**NATIONAL STUDENT
CLEARINGHOUSE**

©2012 National Student Clearinghouse. All rights reserved.

Count of Class 2011 Postsecondary Enrollment and Progress

Total in the Class: 7,209

Academic Years	2011-12	2012-13	2013-14	2014-15	2015-16	2016-17	2017-18	2018-19
New to College	4023	416	220	103	71	0	0	0
Retained	0	3030	2478	1584	961	0	0	0
Returned After Stop Out	0	0	124	164	224	0	0	0
No Longer Enrolled & Not Graduated	0	916	1596	2082	2323	0	0	0
Graduated	22	109	291	887	1315	0	0	0
Not in NSC to Date	3164	2738	2500	2389	2315	0	0	0

DALLAS INDEPENDENT SCHOOL DISTRICT

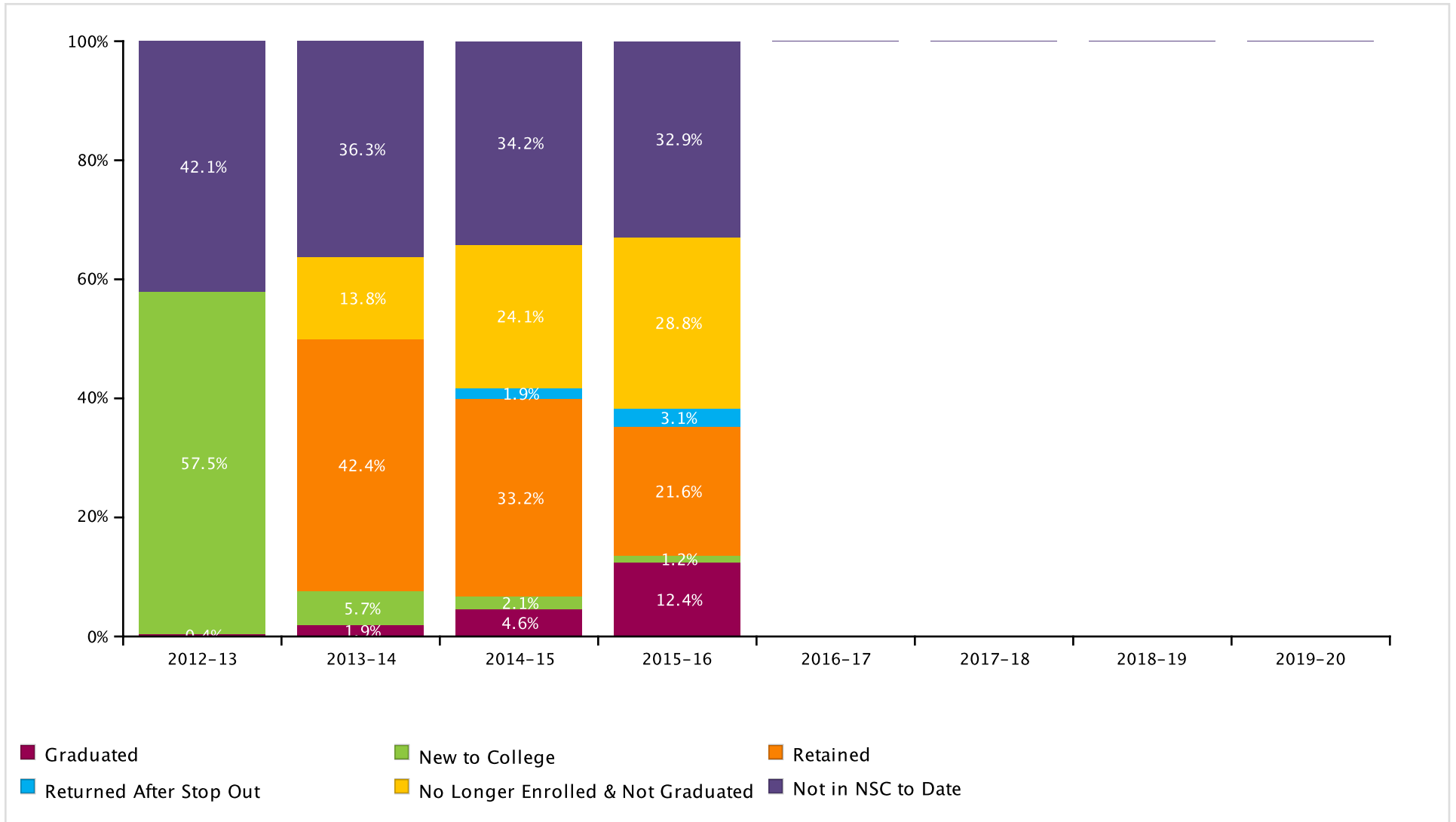
Report Run Date: 04/11/2017 08:47 PM

Page 34 of 45

**NATIONAL STUDENT
CLEARINGHOUSE**

©2012 National Student Clearinghouse. All rights reserved.

Class of 2012 Postsecondary Enrollment and Progress



DALLAS INDEPENDENT SCHOOL DISTRICT

Report Run Date: 04/11/2017 08:47 PM

Page 35 of 45

**NATIONAL STUDENT
CLEARINGHOUSE**

©2012 National Student Clearinghouse. All rights reserved.

Count of Class 2012 Postsecondary Enrollment and Progress

Total in the Class: 7,208

Academic Years	2012-13	2013-14	2014-15	2015-16	2016-17	2017-18	2018-19	2019-20
New to College	4145	409	149	84	0	0	0	0
Retained	0	3057	2394	1554	0	0	0	0
Returned After Stop Out	0	0	135	225	0	0	0	0
No Longer Enrolled & Not Graduated	0	993	1736	2077	0	0	0	0
Graduated	29	135	332	896	0	0	0	0
Not in NSC to Date	3034	2614	2462	2372	0	0	0	0

DALLAS INDEPENDENT SCHOOL DISTRICT

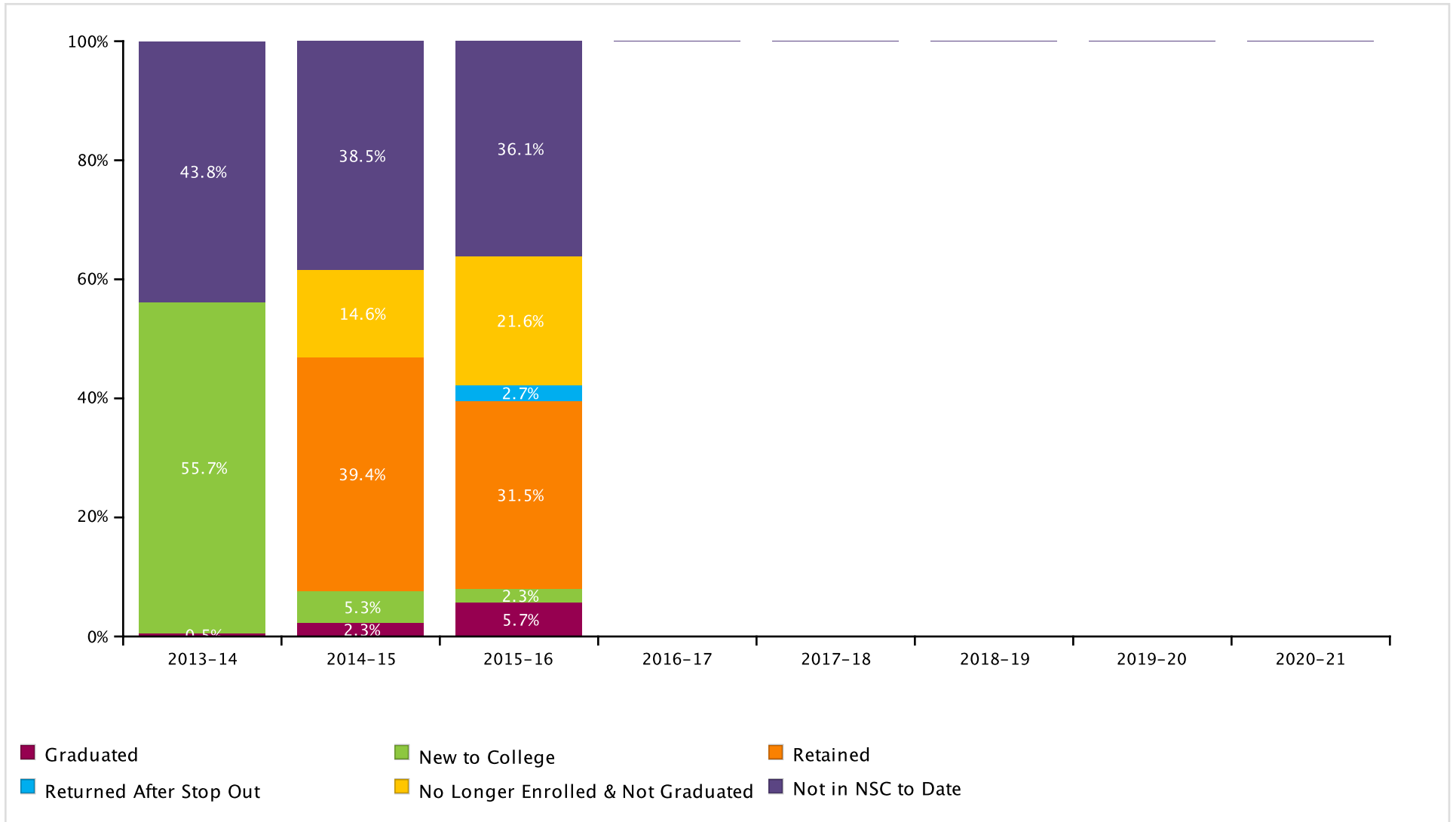
Report Run Date: 04/11/2017 08:47 PM

Page 36 of 45

**NATIONAL STUDENT
CLEARINGHOUSE**

©2012 National Student Clearinghouse. All rights reserved.

Class of 2013 Postsecondary Enrollment and Progress



DALLAS INDEPENDENT SCHOOL DISTRICT

Report Run Date: 04/11/2017 08:47 PM

Page 37 of 45

**NATIONAL STUDENT
CLEARINGHOUSE**

©2012 National Student Clearinghouse. All rights reserved.

Count of Class 2013 Postsecondary Enrollment and Progress

Total in the Class: 7,695

Academic Years	2013-14	2014-15	2015-16	2016-17	2017-18	2018-19	2019-20	2020-21
New to College	4288	404	180	0	0	0	0	0
Retained	0	3032	2424	0	0	0	0	0
Returned After Stop Out	0	0	209	0	0	0	0	0
No Longer Enrolled & Not Graduated	0	1120	1660	0	0	0	0	0
Graduated	35	176	442	0	0	0	0	0
Not in NSC to Date	3372	2963	2780	0	0	0	0	0

DALLAS INDEPENDENT SCHOOL DISTRICT

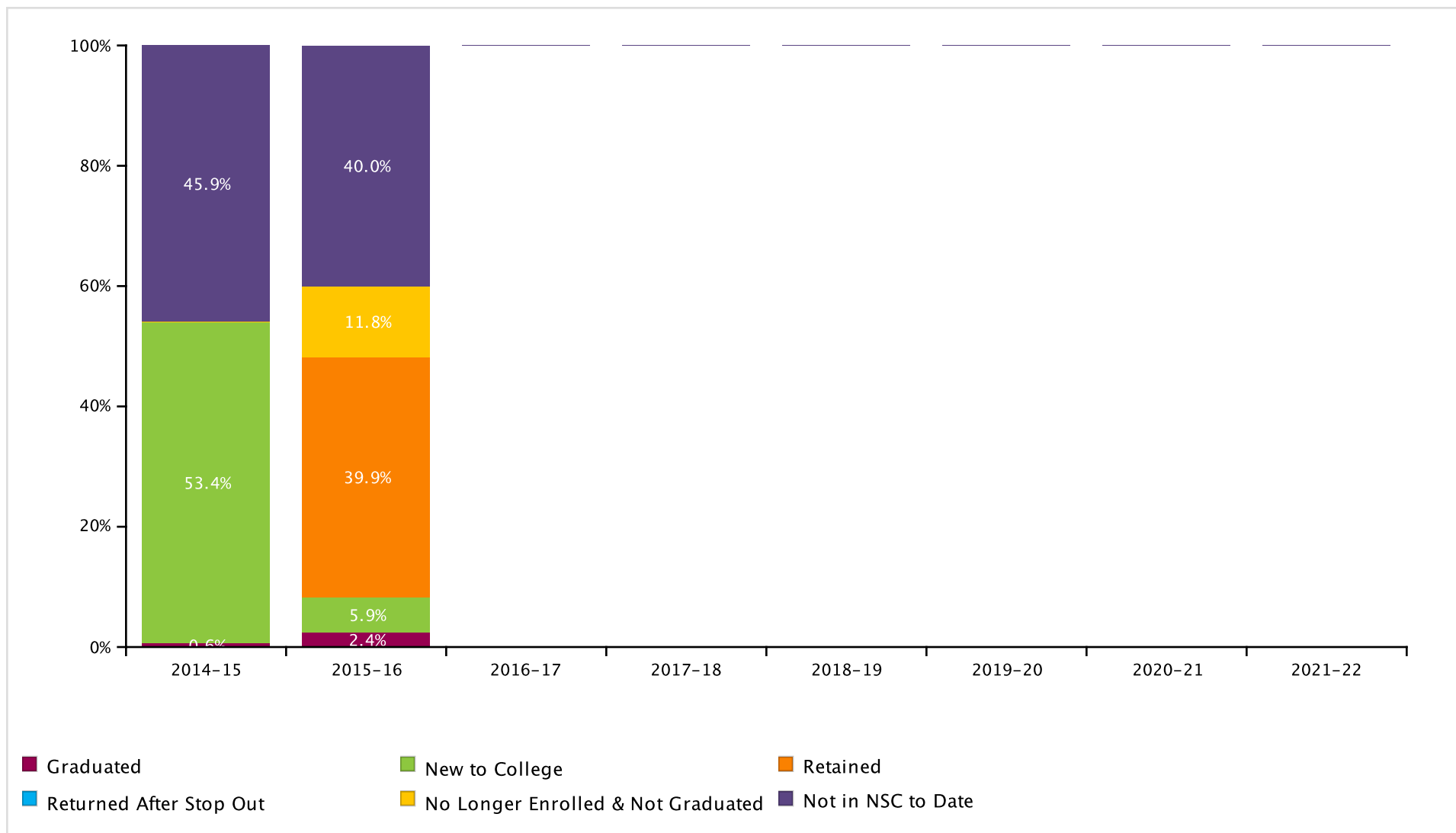
Report Run Date: 04/11/2017 08:47 PM

Page 38 of 45

**NATIONAL STUDENT
CLEARINGHOUSE**

©2012 National Student Clearinghouse. All rights reserved.

Class of 2014 Postsecondary Enrollment and Progress



DALLAS INDEPENDENT SCHOOL DISTRICT

Report Run Date: 04/11/2017 08:47 PM

Page 39 of 45

**NATIONAL STUDENT
CLEARINGHOUSE**

©2012 National Student Clearinghouse. All rights reserved.

Count of Class 2014 Postsecondary Enrollment and Progress

Total in the Class: 7,350

Academic Years	2014-15	2015-16	2016-17	2017-18	2018-19	2019-20	2020-21	2021-22
New to College	3928	431	0	0	0	0	0	0
Retained	0	2935	0	0	0	0	0	0
Returned After Stop Out	0	0	0	0	0	0	0	0
No Longer Enrolled & Not Graduated	0	869	0	0	0	0	0	0
Graduated	46	175	0	0	0	0	0	0
Not in NSC to Date	3376	2940	0	0	0	0	0	0

DALLAS INDEPENDENT SCHOOL DISTRICT

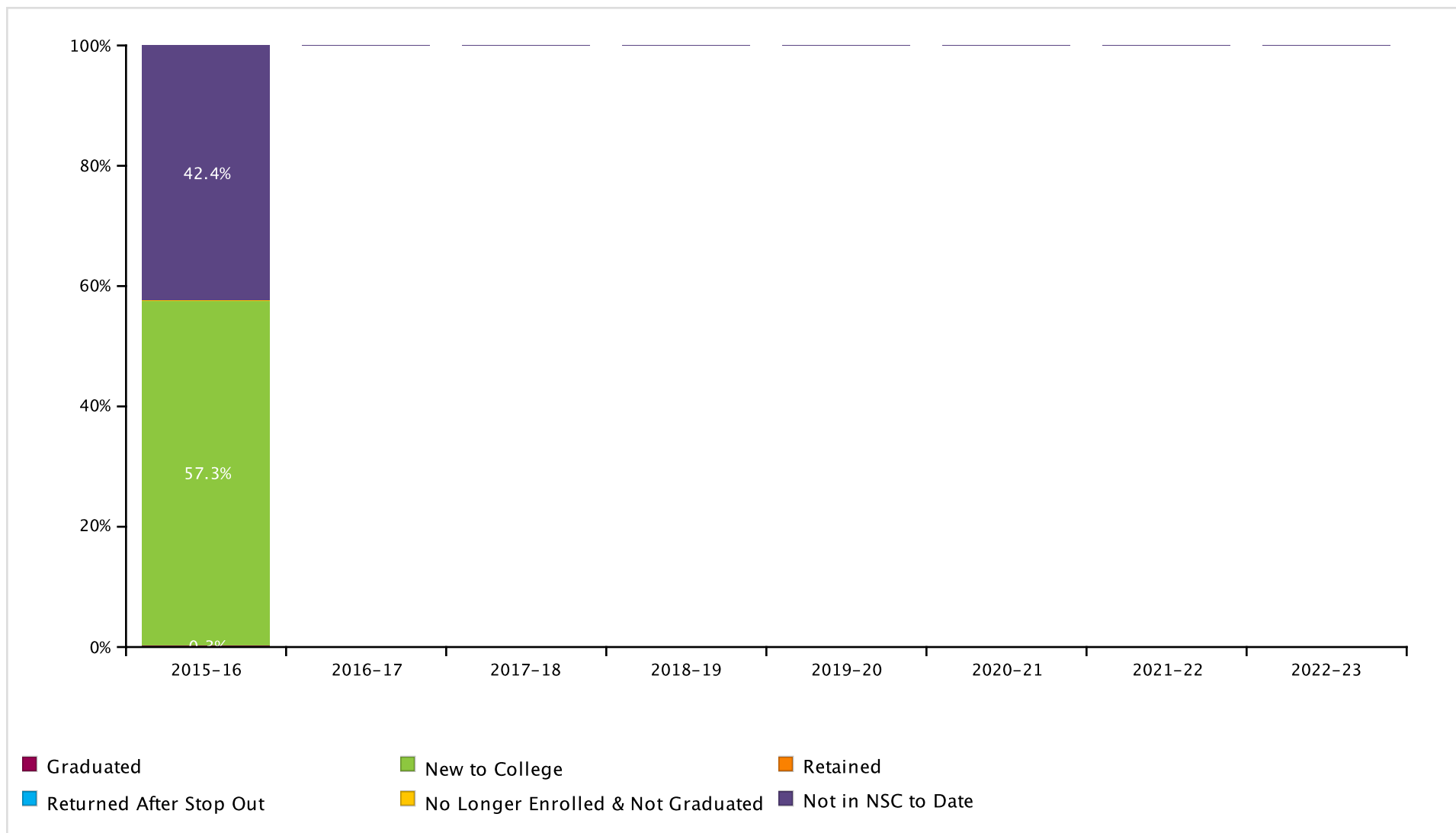
Report Run Date: 04/11/2017 08:47 PM

Page 40 of 45

**NATIONAL STUDENT
CLEARINGHOUSE**

©2012 National Student Clearinghouse. All rights reserved.

Class of 2015 Postsecondary Enrollment and Progress



DALLAS INDEPENDENT SCHOOL DISTRICT

Report Run Date: 04/11/2017 08:47 PM

Page 41 of 45

**NATIONAL STUDENT
CLEARINGHOUSE**

©2012 National Student Clearinghouse. All rights reserved.

Count of Class 2015 Postsecondary Enrollment and Progress

Total in the Class: 7,424

Academic Years	2015-16	2016-17	2017-18	2018-19	2019-20	2020-21	2021-22	2022-23
New to College	4254	0	0	0	0	0	0	0
Retained	0	0	0	0	0	0	0	0
Returned After Stop Out	0	0	0	0	0	0	0	0
No Longer Enrolled & Not Graduated	0	0	0	0	0	0	0	0
Graduated	25	0	0	0	0	0	0	0
Not in NSC to Date	3145	0	0	0	0	0	0	0

DALLAS INDEPENDENT SCHOOL DISTRICT

Report Run Date: 04/11/2017 08:47 PM

Page 42 of 45

**NATIONAL STUDENT
CLEARINGHOUSE**

©2012 National Student Clearinghouse. All rights reserved.

**Most Common Institutions of Enrollment in the Fall Immediately following High School Graduation
for All Classes by Number of Students**

Name	Rank	State	Level	Type	Total
MOUNTAIN VIEW COLLEGE-DALLAS CC DISTRICT	1	TX	2-year	Public	3,246
EASTFIELD COLLEGE-DALLAS CC DISTRICT	2	TX	2-year	Public	3,097
EL CENTRO COLLEGE-DALLAS CC DISTRICT	3	TX	2-year	Public	2,920
BROOKHAVEN COLLEGE-DALLAS CC DISTRICT	4	TX	2-year	Public	1,639
UNIVERSITY OF NORTH TEXAS	5	TX	4-year	Public	1,479
RICHLAND COLLEGE-DALLAS CC DISTRICT	6	TX	2-year	Public	1,296
UNIVERSITY OF TEXAS ARLINGTON	7	TX	4-year	Public	1,248
TEXAS WOMAN'S UNIVERSITY	8	TX	4-year	Public	1,109
UNIVERSITY OF TEXAS AT AUSTIN	9	TX	4-year	Public	892
CEDAR VALLEY COLLEGE-DALLAS CC DISTRICT	10	TX	2-year	Public	737
TEXAS A&M UNIVERSITY	11	TX	4-year	Public	728
TEXAS A&M UNIVERSITY - COMMERCE	12	TX	4-year	Public	709
UNIVERSITY OF TEXAS AT DALLAS	13	TX	4-year	Public	637
PRAIRIE VIEW A&M UNIVERSITY	14	TX	4-year	Public	630
STEPHEN F. AUSTIN STATE UNIVERSITY	15	TX	4-year	Public	480
TEXAS SOUTHERN UNIVERSITY	16	TX	4-year	Public	346
TYLER JUNIOR COLLEGE	17	TX	2-year	Public	335
NAVARRO COLLEGE	18	TX	2-year	Public	312
TEXAS STATE UNIVERSITY - SAN MARCOS	19	TX	4-year	Public	276
TEXAS TECH UNIVERSITY, LUBBOCK	20	TX	4-year	Public	274
SAM HOUSTON STATE UNIVERSITY	21	TX	4-year	Public	273
SOUTHERN METHODIST UNIVERSITY	22	TX	4-year	Private	246
UNIVERSITY OF NORTH TEXAS AT DALLAS	23	TX	4-year	Public	240
NORTH LAKE COLLEGE-DALLAS CC DISTRICT	24	TX	2-year	Public	237
UNIVERSITY OF HOUSTON	25	TX	4-year	Public	192

DALLAS INDEPENDENT SCHOOL DISTRICT

Report Run Date: 04/11/2017 08:47 PM

Page 43 of 45

**NATIONAL STUDENT
CLEARINGHOUSE**

©2012 National Student Clearinghouse. All rights reserved.

Appendix

Graphs (in order of appearance)	Description
Percent of Students Enrolled in College the Fall Immediately Following Graduation From High School (pp. 2-5)	Percentage of high school students who enrolled in a two- or four- year postsecondary institution in the fall semester immediately following graduation. The fall semester immediately following graduation is defined as any enrollment that occurs between August 15 and October 31. Shown only for classes which have completed a fall semester.
Percent of Students Enrolled in College at Any Time During the First Year After High School (pp. 7-10)	Percentage of high school students who enrolled in a two- or four-year postsecondary institution in the academic year immediately following graduation. The first year after high school includes any enrollment that occurs between August 15 of the graduation year and August 14 of the following year . Shown only for classes which have completed the first year after high school.
Percent of Students Enrolled in College at Any Time During the First Two Years After High School (pp. 12-15)	Percentage of high school students who enrolled in a two- or four-year postsecondary institution in the academic year immediately following graduation. The first two years after high school includes any enrollment that occurs between August 15 of the graduation year and August 14 of the second year .Shown only for classes which have completed the first two years after high school.
Percent of Students Enrolled in College the First year After High School Who Returned for a Second Year (pp. 17-20)	Percentage of students who remained enrolled in postsecondary education from the first year to the second year. Note: The graphs show the percentage of students who remained enrolled at any postsecondary institution, not retention at the same institution. Shown only for classes which have completed the first two years after high school.
Percent of High School Class with a College Degree Within Six Years (pp. 22-25)	The six-year degree completion at two- and four- year institutions. Shown only for classes which have completed the six years after high school. Only associate's, bachelor's, and advanced degrees are counted in these rates. Certificates are not included.
Time to College Graduation Within Six Years (p. 27)	This graph shows the time to first degree broken down by the number of academic years since the students graduated from high school.
Class of XXXX Postsecondary Enrollment and Progress (each class year is on its own page)	<p>Progress of a single class of students through postsecondary education. Each segment of the bar chart corresponds to one of the following definitions:</p> <p>GRADUATED: Student has completed an associate's, bachelor's or higher degree (certificates are not included). Once a student is counted as a graduate, he or she is not counted again elsewhere in the report. A graduated record is reported before all other possible categories (e.g. New to College, Retained, etc.)</p> <p>NEW TO COLLEGE: First year that the student was found in the Clearinghouse database.</p> <p>RETAINED: Student was enrolled during the previous year and continues to be enrolled in the current year. The graphs show the student's continued enrollment at any postsecondary institution, not retention at the same institution.</p> <p>RETURNED AFTER STOP OUT: Student was enrolled, did not appear in postsecondary education the following year, and reappeared in a year thereafter.</p> <p>NO LONGER ENROLLED & NOT GRADUATED: Student was enrolled in postsecondary education, but currently is not and there is no record of completion.</p> <p>NOT IN NSC TO DATE: Student was not found in the Clearinghouse database. (Note: Institutions that participate in the Clearinghouse represent more than 93% of the nation's two- and four- year postsecondary enrollment. Students who are enrolled in postsecondary institutions that do not participate in the Clearinghouse are not in the Clearinghouse database.</p>
Most Common Institutions of Enrollment in the Fall Immediately Following Graduation from High School for All Classes by Number of Students	List of the postsecondary institutions where students are most likely to enroll first after they graduate high school.

Term	Definition
High School Class (labeled by graduation year)	Includes all students who graduated high school between September 1 of the previous year and August 31 of the graduation year.
Academic Year	Defined as any collegiate enrollment that occurs between August 15 of one year and August 14 of the following year.
Institutional Level	Indicates the level of degree predominantly offered by the institution (i.e. two-year or four-year).
Institutional Type	Indicates whether the institution is controlled publically or by a private entity.
Institutional Location	Indicates if an institution is in-state or out-of-state based on the comparison between the states where the institution and the high school are located.