

DATA PACKET

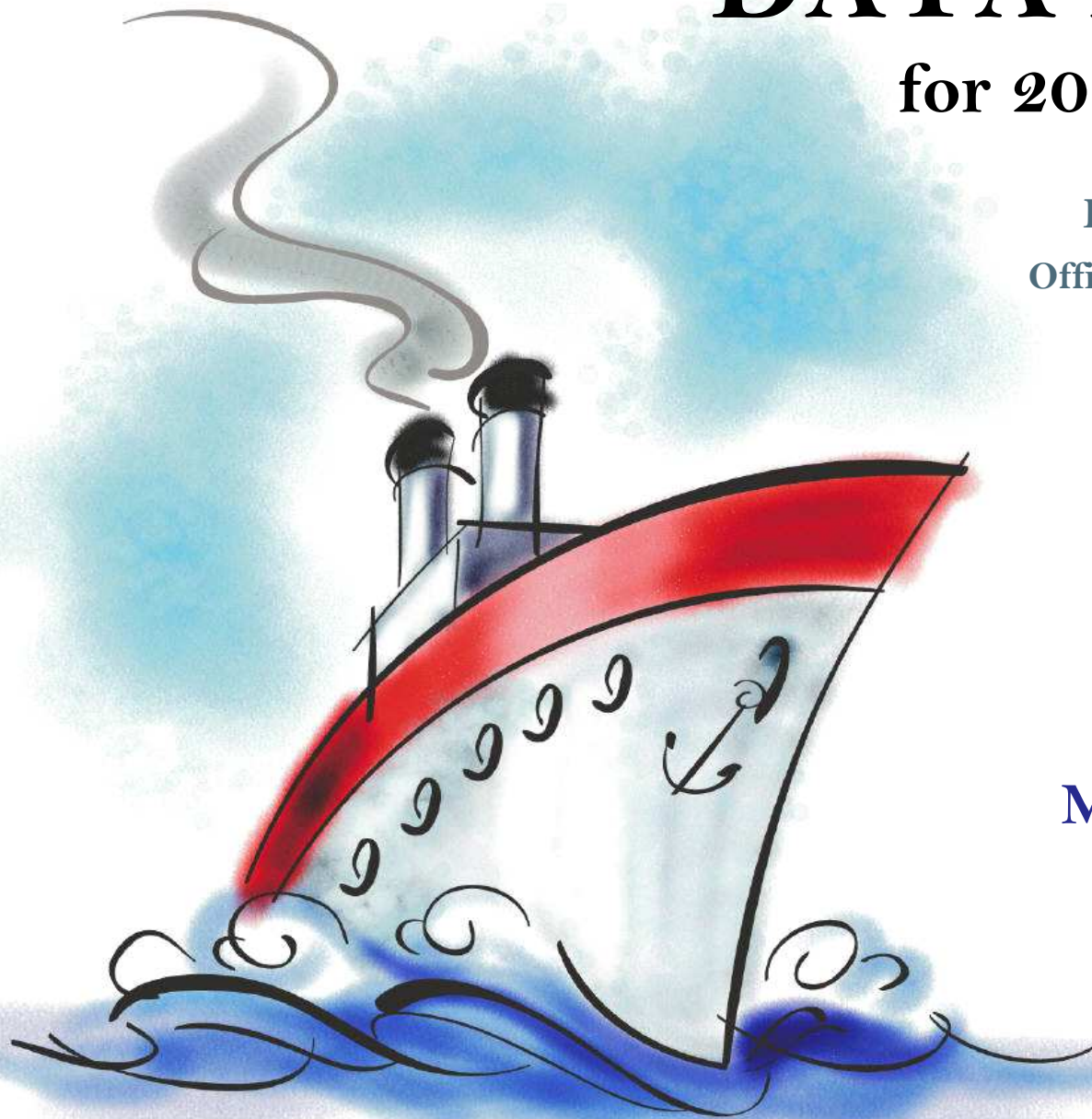
for 2014-15 planning

Evaluation & Assessment
Office of Institutional Research
<http://mydata.dallasisd.org>
OIR@dallasisd.org

September 5, 2014

School Number 83

**SAM TASBY
MIDDLE SCHOOL**



Dallas Independent School District

2. Contents Table of Contents

STUDENTS AND STAFF

- 5. Summary Summary of Student and Teacher Statistics
- 7. Enroll (2) Enrollment Statistics by Select Student Group
- 9. Teachers Teacher Statistics

STAAR (English)

- 10. Reading (3-8) STAAR 3-8 Reading in English
- 18. Math (3-8) STAAR 3-8 Mathematics in English
- 26. Science (3-8) STAAR 3-8 Science in English

STAAR L

- 34. Math (3-8) STAAR L 3-8 Mathematics
- 42. SS (3-8) STAAR L 3-8 Social Studies

STAAR M

- 46. Reading (3-8) STAAR M 3-8 Reading
- 54. Math (3-8) STAAR M 3-8 Mathematics
- 62. SS (3-8) STAAR M 3-8 Social Studies

ENGLISH PROFICIENCY

- 66. WMLS Woodcock-Muñoz Language Survey

LOCAL ASSESSMENT

- 68. ACP Assessments of Course Performance

3. Notes Notes and Data Descriptions

- 6. Enroll (1) Enrollment Statistics by Ethnicity
- 8. Attendance Student Attendance Statistics

- 14. Writing (3-8) STAAR 3-8 Writing in English
- 22. Math (EOC) STAAR EOC Mathematics
- 30. SS (3-8) STAAR 3-8 Social Studies in English

38. Science (3-8) STAAR L 3-8 Science

- 50. Writing (3-8) STAAR M 3-8 Writing
- 58. Science (3-8) STAAR M 3-8 Science

67. TELPAS Texas English Language Proficiency Assessment System

2013-14 SCHOOL SUMMARY

- Student percentages are computed as the percentage of total student enrollment.
- Additional statistics are available in ENROLLMENT and TEACHER reports.
- Race/ethnic categories are based on the newest federal standards for ethnicity and race reporting, though some categories have been combined because of small group sizes. Students reporting their ethnicity as “Hispanic” are not counted in any race category.
- “Economically disadvantaged” students are those who qualify for free or reduced-price lunch through the federal government's program.
- Teacher demographics and assignments are from the district's Public Education Information Management System (PEIMS) submission to the TEA.

ENROLLMENT

- Statistics are based on the school's enrollment at the end of the fifth six-weeks grading period.
- “Economically disadvantaged” students are those receiving free or reduced-price lunches.
- “New” students were new to the district in 2013-14. They are counted as new if not enrolled in a district campus before the last day of the 2012-13 school year.
- The “retention rate” is the percentage of students in the same grade at the end of the fifth six-weeks grading period for both 2012-13 and 2013-14.

ATTENDANCE

- Statistics are based on student attendance through the end of the sixth six-weeks grading period (the end of the school year).
- “Average daily membership” is the total number of school days students were ENROLLED divided by the number of school days in the year.
- The “average daily attendance” number (N) is the total number of school days students were IN ATTENDANCE divided by the number of school days in the year. The “average daily attendance” percentage (%) is the average attendance rate. For each student, the number of days attended is divided by the number of days enrolled. This rate is then averaged across students.
- The number (N) of “yearly transactions” is the total number of transfer and withdrawal transactions in the school year. The percentage (%) is the number of transactions divided by “average daily membership,” which gives (on average) the percentage of the membership associated with a transaction.
- “Continuously enrolled” students are enrolled and in attendance for a minimum number of instructional days in at least one course at the school between the beginning of the school year and the first day of the main STAAR testing period. The minimum number varies depending on the school year's calendar, but is typically around 130 days.
- The “stability rate” is the number of continuously enrolled students divided by “average daily membership.”

TEACHERS

- Teacher demographics and assignments are from the district's Public Education Information Management System (PEIMS) submission to the TEA.
- Teacher absences counted towards the average DO NOT include vacation days (coded as VAC in personnel database).
- Retention rate for a school year is computed with numerator “# of teachers assigned to the school both that year and the year prior” and denominator “# of teachers assigned to the school for the prior year.” That is, the retention rate is the percentage of the prior year's teachers who continued at the school.

STAAR, STAAR L, and STAAR M

- Cells marked with an asterisk (*) indicate five or fewer students were tested. Blank cells indicate no students were tested.
- Student group assignments are from the district's Public Education Information Management System (PEIMS) submission to the TEA.
- STAAR statistics are based on results from standard STAAR only. STAAR L and STAAR M statistics are computed separately, following TEA reporting practice.
- “Percentage Satisfactory” is the percentage of students achieving Level 2 (Satisfactory) or Level 3 (Advanced).
- Statistics by reporting category are averages for all students (across student groups and genders).
- An “average percentage correct” is computed as follows: for each student, divide the number of items correctly answered by the total number of items in the test section, then average the resulting percentages across all students. For short answers on EOC English tests, an “average rating” is presented; STAAR EOC short answers are rated on a scale of 0 to 3. For written compositions on writing tests, “average score points” is presented. Additional details provided in report footnotes.
- Reading and mathematics statistics for SSI grades 5 and 8 are based on scores cumulative through the second administration.

TELPAS

- Students are counted as having tested if any one of the four domains is rated. Because a TELPAS composite rating is not assigned to a student unless all four domains are rated, the number of TELPAS composite ratings may be smaller than the number tested.
- If a student's composite rating did not increase at least one level from 2013 to 2014, the TEA did not report the 2013 composite rating.
- If a student is rated as advanced high in 2014, the TEA does not differentiate between the advanced and advanced high levels from 2013.

ACP

- Cells marked with an asterisk (*) indicate five or fewer students were tested. Blank cells indicate no students were tested.
- The ACPs are semester exams administered in grades K-12. Not all courses have ACPs. In MIDDLE and HIGH school, ACP results account for a portion of students' final semester grades (10% and 15% respectively). “Average course mark (no ACP)” is computed from semester grades before factoring in ACP scores. In ELEMENTARY school, ACP results account for 5% of students' semester grades for core courses; course-grade statistics are not reported in data packets for elementary grades.
- Raw scores on the ACPs (percentage of items correct) are scaled each year to maintain similar annual passing rates for the district.
- A scale score of at least 70 percent is required to pass an ACP. A course mark of at least 70 percent is required to pass a course.
- Statistics are computed separately for Semester 1 and Semester 2 tests; time of administration during the school year is not relevant. Results from tests written for different school years are not combined.

STUDENT ENROLLMENT

Grade	Enrollment
6	287
7	286
8	264
ALL	837

STUDENT AND TEACHER RACE/ETHNICITY

Ethnicity/Race	Students		Teachers	
	Number	Percent	Number	Percent
Black/African American	143	17.1	24	43.6
American Indian/Alaska Native	2	0.2	*	*
Asian/Hawaiian/Pacific Islander	149	17.8	*	*
Hispanic	511	61.1	5	9.1
White	30	3.6	23	41.8
Multiple	2	0.2	0	0.0
Other* (teachers only)	—	—	3	5.5
Not reported (students only)	0	0.0	—	—

*For teachers, "Other" category includes American Indian/Alaska Native and Asian/Hawaiian/Pacific Islander.

SELECT STUDENT GROUP ENROLLMENT

Group	Number	Percent
At-Risk	772	92.2
Economically disadvantaged	797	95.2
Limited English proficient (LEP)	604	72.2
Special education	82	9.8
Talented and Gifted (TAG)	50	6.0

Grade	Year	Enrollment	African American		American Indian		Asian		Hispanic		White		Multiple category	
			N	%	N	%	N	%	N	%	N	%	N	%
6	2012	266	44	16.5	2	0.8	38	14.3	171	64.3	9	3.4	1	0.4
	2013	313	60	19.2	2	0.6	43	13.7	200	63.9	8	2.6	0	0.0
	2014	287	37	12.9	0	0.0	58	20.2	179	62.4	13	4.5	0	0.0
7	2012	281	49	17.4	1	0.4	44	15.7	183	65.1	3	1.1	0	0.0
	2013	276	51	18.5	0	0.0	43	15.6	173	62.7	8	2.9	1	0.4
	2014	286	57	19.9	1	0.3	40	14.0	182	63.6	5	1.7	1	0.3
8	2012	269	40	14.9	4	1.5	48	17.8	171	63.6	5	1.9	1	0.4
	2013	256	38	14.8	1	0.4	45	17.6	167	65.2	3	1.2	0	0.0
	2014	264	49	18.6	1	0.4	51	19.3	150	56.8	12	4.5	1	0.4
6-8	2012	816	133	16.3	7	0.9	130	15.9	525	64.3	17	2.1	2	0.2
	2013	845	149	17.6	3	0.4	131	15.5	540	63.9	19	2.2	1	0.1
	2014	837	143	17.1	2	0.2	149	17.8	511	61.1	30	3.6	2	0.2

Grade	Year	Enrollment	Economically Disadvantaged		LEP		Special Education		At Risk		TAG		New (to District)		Gender		Retention Rate (%)
			N	%	N	%	N	%	N	%	N	%	N	%	% Male	% Female	
6	2012	266	265	99.6	199	74.8	24	9.0	226	85.0	39	14.7	33	12.4	52.6	47.4	1.9
	2013	313	309	98.7	218	69.6	25	8.0	258	82.4	29	9.3	43	13.7	55.3	44.7	2.6
	2014	287	271	94.4	239	83.3	34	11.8	269	93.7	21	7.3	39	13.6	55.7	44.3	7.0
7	2012	281	270	96.1	169	60.1	23	8.2	224	79.7	13	4.6	38	13.5	52.7	47.3	1.4
	2013	276	270	97.8	212	76.8	24	8.7	234	84.8	21	7.6	35	12.7	52.9	47.1	4.3
	2014	286	278	97.2	190	66.4	25	8.7	261	91.3	14	4.9	33	11.5	50.3	49.7	3.1
8	2012	269	262	97.4	168	62.5	30	11.2	211	78.4	25	9.3	36	13.4	50.6	49.4	3.7
	2013	256	245	95.7	152	59.4	23	9.0	211	82.4	17	6.6	33	12.9	49.6	50.4	2.3
	2014	264	248	93.9	175	66.3	23	8.7	242	91.7	15	5.7	44	16.7	52.7	47.3	2.3
6-8	2012	816	797	97.7	536	65.7	77	9.4	661	81.0	77	9.4	107	13.1	52.0	48.0	2.3
	2013	845	824	97.5	582	68.9	72	8.5	703	83.2	67	7.9	111	13.1	52.8	47.2	3.1
	2014	837	797	95.2	604	72.2	82	9.8	772	92.2	50	6.0	116	13.9	52.9	47.1	4.2

Grade	Year	Average Daily Membership		Average Daily Attendance				Yearly Transactions			Continuously Enrolled		Stability Rate	
		N	District	N	%	District N	District %	N	%	District %	N	District	%	District
6	2012	265	10,683	257	96.7	10,315	96.6	46	17.3	17.6	233	9,420	87.8	88.2
	2013	310	11,463	300	96.6	11,062	96.5	52	16.8	21.1	284	10,320	91.5	90.0
	2014	286	10,808	277	96.7	10,413	96.3	63	22.0	20.0	256	9,554	89.4	88.4
7	2012	282	10,204	269	95.3	9,727	95.3	53	18.8	23.8	242	8,576	85.9	84.0
	2013	271	10,542	260	96.1	10,116	96.0	63	23.2	24.5	234	9,357	86.3	88.8
	2014	289	11,195	279	96.6	10,729	95.8	48	16.6	22.1	259	9,852	89.7	88.0
8	2012	271	10,369	261	96.4	9,838	94.9	38	14.0	15.5	238	8,711	87.8	84.0
	2013	249	9,955	238	95.2	9,486	95.3	21	8.4	17.6	221	8,664	88.6	87.0
	2014	265	10,449	255	96.1	9,970	95.4	21	7.9	13.1	229	9,097	86.3	87.1
6-8	2012	818	31,256	786	96.1	29,880	95.6	137	16.7	18.9	713	26,707	87.1	85.4
	2013	831	31,960	798	96.0	30,665	96.0	136	16.4	21.1	739	28,341	89.0	88.7
	2014	841	32,451	811	96.5	31,112	95.9	132	15.7	18.5	744	28,503	88.5	87.8

Teachers: 55

DISTRIBUTIONS

Ethnicity/Race	Number	Percentage
African American	24	43.6
Hispanic	5	9.1
White	23	41.8
Multiple	0	0.0
Other	3	5.5

Gender	Number	Percentage
Female	34	61.8
Male	21	38.2

ATTENDANCE / RETENTION

	Average Absences	Retention Rate
2011-12	6.9	—
2012-13	8.0	72.9
2013-14	6.9	77.8

YEARS EXPERIENCE

Years	Number	Percentage
Beginning (0)	4	7.3
1	6	10.9
2	2	3.6
3	3	5.5
4	0	0.0
5	3	5.5
1-3	11	20.0
More than 3	40	72.7
1 - 5	14	25.5
6 - 10	17	30.9
11 - 20	16	29.1
More than 20	4	7.3

PERCENTAGE SATISFACTORY (Levels 2 or 3)

Grade	Year	White	African Amer	Hispanic	Econ Disadv	Special Educ	LEP	At Risk	Migrant	Male	Female	All	District	Number Tested (All Students)
6	2012	85.7	62.9	56.1	50.8	*	44.4	42.6		45.1	56.3	50.8	63.5	248
	2013	66.7	60.0	46.5	46.8	*	38.7	37.9		41.0	54.2	46.7	57.7	274
	2014	71.4	54.8	59.3	55.4	37.5	51.9	53.1		47.9	60.7	53.6	63.1	252
7	2012	*	61.1	54.0	47.6	*	23.8	35.4		51.5	42.7	47.3	67.5	258
	2013	50.0	63.6	54.7	50.6	*	43.4	44.9		44.1	57.6	51.0	67.3	243
	2014	*	58.0	48.2	48.3	*	34.1	40.1		43.8	54.0	48.8	60.5	254
8	2012	*	55.9	62.6	49.4	28.6	30.6	41.5		50.4	51.2	50.8	71.3	244
	2013	*	72.7	69.8	62.2	*	44.6	53.8		67.2	58.3	62.7	82.7	236
	2014	70.0	82.6	77.7	70.6	100.0	54.8	64.6	*	68.5	71.8	70.1	81.5	241
6-8	2012	64.3	60.0	57.4	49.2	42.9	33.6	39.8		49.1	50.1	49.6	67.4	750
	2013	50.0	64.6	56.4	52.8	41.7	41.9	45.2		49.7	56.7	53.1	68.6	753
	2014	75.0	66.1	60.8	57.8	57.9	47.1	52.3	*	53.0	62.0	57.3	68.2	747

NUMBER TESTED IN GRADES 6-8													
2012	14	105	493	727	14	494	550			375	375	750	29,211
2013	14	127	505	731	12	508	586			390	363	753	29,692
2014	20	127	467	690	19	518	623	2		394	353	747	30,015

NUMBER UNSATISFACTORY (Level 1)

Grade	Year	White	African Amer	Hispanic	Econ Disadv	Special Educ	LEP	At Risk	Migrant	Male	Female	All	District	Number Tested (All Students)
6	2012	1	13	72	122	*	104	109		67	55	122	3,673	248
	2013	2	20	100	143	*	119	128		92	54	146	4,523	274
	2014	2	14	66	103	5	100	105		73	44	117	3,679	252
7	2012	*	14	80	129	*	122	122		65	71	136	3,070	258
	2013	3	16	72	117	*	99	109		66	53	119	3,215	243
	2014	*	21	86	123	*	108	124		73	57	130	4,075	254
8	2012	*	15	58	118	5	102	100		59	61	120	2,786	244
	2013	*	9	48	85	*	77	84		38	50	88	1,586	236
	2014	3	8	31	65	0	66	68	*	39	33	72	1,797	241
6-8	2012	5	42	210	369	8	328	331		191	187	378	9,529	750
	2013	7	45	220	345	7	295	321		196	157	353	9,324	753
	2014	5	43	183	291	8	274	297	*	185	134	319	9,551	747

NUMBER TESTED IN GRADES 6-8													
2012	14	105	493	727	14	494	550			375	375	750	29,211
2013	14	127	505	731	12	508	586			390	363	753	29,692
2014	20	127	467	690	19	518	623	2		394	353	747	30,015

PERCENTAGE ADVANCED (Level 3)

Grade	Year	White	African Amer	Hispanic	Econ Disadv	Special Educ	LEP	At Risk	Migrant	Male	Female	All	District	Number Tested (All Students)
6	2012	0.0	8.6	5.5	5.2	*	4.3	4.2		5.7	4.8	5.2	8.3	248
	2013	50.0	8.0	4.8	6.3	*	2.1	1.9		4.5	8.5	6.2	11.3	274
	2014	0.0	6.5	3.1	2.6	0.0	1.9	1.8		0.7	5.4	2.8	7.1	252
7	2012	*	8.3	4.0	4.1	*	0.0	1.1		3.7	4.0	3.9	10.3	258
	2013	0.0	9.1	4.4	4.6	*	3.4	3.5		2.5	7.2	4.9	8.7	243
	2014	*	6.0	6.0	4.6	*	1.8	1.9		6.9	3.2	5.1	10.0	254
8	2012	*	5.9	3.9	3.0	0.0	0.0	1.2		3.4	3.2	3.3	9.9	244
	2013	*	15.2	8.8	8.4	*	1.4	3.3		10.3	5.8	8.1	15.5	236
	2014	10.0	2.2	7.9	6.3	0.0	2.7	2.6	*	4.0	7.7	5.8	13.1	241
6-8	2012	0.0	7.6	4.5	4.1	0.0	1.6	2.2		4.3	4.0	4.1	9.5	750
	2013	21.4	10.2	5.9	6.4	0.0	2.4	2.9		5.6	7.2	6.4	11.7	753
	2014	5.0	4.7	5.6	4.5	0.0	2.1	2.1	*	3.8	5.4	4.6	10.1	747

NUMBER TESTED IN GRADE 6-8													
2012	14	105	493	727	14	494	550			375	375	750	29,211
2013	14	127	505	731	12	508	586			390	363	753	29,692
2014	20	127	467	690	19	518	623	2		394	353	747	30,015

AVERAGE PERCENTAGE OF ITEMS CORRECT BY REPORTING CATEGORY

Grade	Year	REPORTING CATEGORY		
		1. Understanding Across Genres (GR 3-5) 1. Understanding/Analysis Across Genres (GR 6-8)	2. Understanding/Analysis of Literary Texts	3. Understanding/Analysis of Informational Texts
6	2012	62.1	54.4	49.8
	2013	56.2	54.7	51.7
	2014	56.4	51.3	52.4
7	2012	58.1	49.3	50.4
	2013	53.3	50.0	59.4
	2014	56.1	50.7	48.9
8	2012	54.5	49.1	51.6
	2013	59.4	58.9	52.7
	2014	61.6	57.0	55.6
6-8	2012	58.2	50.9	50.6
	2013	56.3	54.5	54.5
	2014	58.0	52.9	52.3

PERCENTAGE SATISFACTORY (Levels 2 or 3)

Grade	Year	White	African Amer	Hispanic	Econ Disadv	Special Educ	LEP	At Risk	Migrant	Male	Female	All	District	Number Tested (All Students)
7	2012	*	48.6	50.0	41.6	*	20.8	29.8		45.5	36.9	41.4	59.2	256
	2013	50.0	68.9	54.4	51.2	*	45.2	46.5		39.3	63.7	51.6	57.1	246
	2014	*	54.9	54.0	49.4	*	34.0	41.0		44.2	55.7	49.8	54.6	251

NUMBER TESTED IN GRADE 7													
2012	2	35	174	245	2	159	188		134	122	256	9,456	
2013	6	45	158	240	3	177	198		122	124	246	9,785	
2014	3	51	163	235	3	162	205		129	122	251	10,339	

NUMBER UNSATISFACTORY (Level 1)

Grade	Year	White	African Amer	Hispanic	Econ Disadv	Special Educ	LEP	At Risk	Migrant	Male	Female	All	District	Number Tested (All Students)
7	2012	*	18	87	143	*	126	132		73	77	150	3,859	256
	2013	3	14	72	117	*	97	106		74	45	119	4,198	246
	2014	*	23	75	119	*	107	121		72	54	126	4,690	251

NUMBER TESTED IN GRADE 7													
2012	2	35	174	245	2	159	188		134	122	256	9,456	
2013	6	45	158	240	3	177	198		122	124	246	9,785	
2014	3	51	163	235	3	162	205		129	122	251	10,339	

PERCENTAGE ADVANCED (Level 3)

Grade	Year	White	African Amer	Hispanic	Econ Disadv	Special Educ	LEP	At Risk	Migrant	Male	Female	All	District	Number Tested (All Students)
7	2012	*	0.0	0.0	0.0	*	0.0	0.0		0.0	0.0	0.0	3.4	256
	2013	0.0	0.0	0.6	0.4	*	0.0	0.5		0.0	0.8	0.4	1.5	246
	2014	*	0.0	0.6	0.9	*	0.0	0.5		0.0	1.6	0.8	3.0	251

NUMBER TESTED IN GRADE 7													
2012	2	35	174	245	2	159	188		134	122	256	9,456	
2013	6	45	158	240	3	177	198		122	124	246	9,785	
2014	3	51	163	235	3	162	205		129	122	251	10,339	

AVERAGE PERCENTAGE OF ITEMS CORRECT BY REPORTING CATEGORY

Grade	Year	REPORTING CATEGORY			
		1. Composition ¹ GR 4: Personal Narrative GR 7: Expository	1. Composition ¹ GR 4: Expository GR 7: Personal Narrative	2. Revision	3. Editing
7	2012	1.6	1.9	53.3	50.6
	2013	3.8	4.3	56.5	57.7
	2014	3.9	4.4	57.2	52.5

¹Average score points (range 0-8). A STAAR composition is rated twice on a scale of 1 to 4, and the ratings are summed to determine score points for the composition. Score point scale: 0=Non-scorable; 2=Very Limited; 3=between Very Limited and Basic; 4=Basic; 5=between Basic and Satisfactory; 6=Satisfactory; 7=between Satisfactory and Accomplished; 8=Accomplished

PERCENTAGE SATISFACTORY (Levels 2 or 3)

Grade	Year	White	African Amer	Hispanic	Econ Disadv	Special Educ	LEP	At Risk	Migrant	Male	Female	All	District	Number Tested (All Students)
6	2012	100.0	51.4	66.5	65.4	50.0	65.1	62.1		66.7	64.2	65.4	66.4	208
	2013	*	57.4	61.3	60.1	*	55.8	52.4		58.2	61.8	59.8	60.6	251
	2014	*	73.1	63.5	65.4	*	63.5	63.9		56.6	74.3	64.6	64.3	223
7	2012		51.7	54.8	56.0	*	37.5	44.0		61.8	46.7	55.0	59.9	202
	2013	*	39.5	57.8	52.7	*	52.8	50.8		50.0	55.1	52.7	59.9	226
	2014	*	56.1	61.1	61.9	*	57.3	58.3		63.8	60.4	62.2	55.1	222
8	2012	*	36.0	50.0	47.7	16.7	46.5	40.0		55.0	42.7	48.1	51.9	135
	2013		67.9	74.4	70.2	*	65.4	67.6		81.5	60.2	70.1	74.0	174
	2014	*	78.9	78.3	77.6	*	72.5	75.7		84.1	71.4	77.7	73.2	179
6-8	2012	85.7	47.2	57.9	57.6	37.5	52.0	50.0		62.1	52.4	57.2	60.3	545
	2013	70.0	53.4	63.6	60.2	45.5	57.0	56.1		61.2	58.9	60.1	63.7	651
	2014	92.3	68.6	66.5	67.7	42.9	63.8	65.3		66.6	68.5	67.5	63.3	624

NUMBER TESTED IN GRADES 6-8													
2012	7	89	435	531	16	321	512		272	273	545	26,044	
2013	10	118	456	636	11	435	512		330	321	651	26,676	
2014	13	105	436	585	14	414	525		326	298	624	27,304	

NUMBER UNSATISFACTORY (Level 1)

Grade	Year	White	African Amer	Hispanic	Econ Disadv	Special Educ	LEP	At Risk	Migrant	Male	Female	All	District	Number Tested (All Students)
6	2012	0	17	54	72	3	51	58		34	38	72	3,327	208
	2013	*	20	70	99	*	76	88		59	42	101	4,133	251
	2014	*	7	58	71	*	66	73		53	26	79	3,478	223
7	2012		14	76	85	*	65	79		42	49	91	3,705	202
	2013	*	26	65	104	*	75	91		54	53	107	3,851	226
	2014	*	18	63	80	*	56	73		42	42	84	4,536	222
8	2012	*	16	53	68	5	38	60		27	43	70	3,319	135
	2013		9	31	50	*	36	46		15	37	52	1,709	174
	2014	*	8	25	38	*	28	36		14	26	40	2,001	179
6-8	2012	1	47	183	225	10	154	197		103	130	233	10,351	545
	2013	3	55	166	253	6	187	225		128	132	260	9,693	651
	2014	1	33	146	189	8	150	182		109	94	203	10,015	624

NUMBER TESTED IN GRADES 6-8													
2012	7	89	435	531	16	321	512			272	273	545	26,044
2013	10	118	456	636	11	435	512			330	321	651	26,676
2014	13	105	436	585	14	414	525			326	298	624	27,304

PERCENTAGE ADVANCED (Level 3)

Grade	Year	White	African Amer	Hispanic	Econ Disadv	Special Educ	LEP	At Risk	Migrant	Male	Female	All	District	Number Tested (All Students)
6	2012	16.7	5.7	6.2	6.3	0.0	5.5	4.6		5.9	6.6	6.3	9.8	208
	2013	*	2.1	8.8	8.1	*	5.2	3.8		8.5	7.3	8.0	8.5	251
	2014	*	11.5	8.8	8.8	*	8.8	8.4		8.2	10.9	9.4	9.6	223
7	2012		3.4	1.8	2.1	*	0.0	0.7		2.7	1.1	2.0	6.3	202
	2013	*	0.0	1.9	1.4	*	1.3	1.1		0.9	1.7	1.3	4.8	226
	2014	*	0.0	5.6	6.2	*	4.6	4.6		6.0	5.7	5.9	6.7	222
8	2012	*	0.0	0.0	0.0	0.0	0.0	0.0		0.0	0.0	0.0	0.4	135
	2013		0.0	1.7	1.2	*	0.0	0.0		2.5	0.0	1.1	0.9	174
	2014	*	2.6	0.0	0.6	*	0.0	0.0		1.1	0.0	0.6	1.0	179
6-8	2012	14.3	3.4	3.0	3.2	0.0	2.5	2.0		3.3	2.9	3.1	6.1	545
	2013	10.0	0.8	4.6	3.9	0.0	2.5	1.8		4.5	3.1	3.8	5.3	651
	2014	7.7	3.8	5.3	5.5	0.0	5.3	4.8		5.5	5.7	5.6	6.2	624

NUMBER TESTED IN GRADE 6-8													
2012	7	89	435	531	16	321	394		272	273	545	26,044	
2013	10	118	456	636	11	435	512		330	321	651	26,676	
2014	13	105	436	585	14	414	525		326	298	624	27,304	

AVERAGE PERCENTAGE OF ITEMS CORRECT BY REPORTING CATEGORY

Grade	Year	REPORTING CATEGORY				
		1. Numbers, Operations, and Quantitative Reasoning	2. Patterns, Relationships, and Algebraic Reasoning	3. Geometry and Spatial Reasoning	4. Measurement	5. Probability and Statistics
6	2012	45.6	56.3	50.6	45.9	47.7
	2013	50.7	53.3	49.0	40.7	51.6
	2014	55.4	51.8	55.8	52.2	54.3
7	2012	48.9	47.8	50.7	37.0	47.7
	2013	43.3	50.5	51.8	37.2	37.3
	2014	56.6	51.7	46.9	44.4	53.1
8	2012	43.6	38.9	34.4	37.2	37.6
	2013	49.5	48.4	44.5	48.8	41.0
	2014	50.3	50.6	52.4	43.0	55.0
6-8	2012	46.3	48.8	46.6	40.5	45.2
	2013	47.8	51.0	48.8	41.7	43.8
	2014	54.4	51.4	51.7	46.8	54.1

PERCENTAGE SATISFACTORY (Levels 2 or 3)

Test	Year	White	African Amer	Hispanic	Econ Disadv	Special Educ	LEP	At Risk	Migrant	Male	Female	All	District
ALGEBRA I (GRADE 8)	2012	*	*	94.7	93.0		93.8	87.5		92.3	90.5	91.5	94.1
	2013		*	100.0	100.0	*	100.0	100.0		100.0	100.0	100.0	95.4
	2014	*	*	100.0	100.0	*	*	*		100.0	100.0	100.0	97.2
Tests Taken	2012	2	4	38	43		16	13		26	21	47	2,554
	2013		3	27	30	1	8	13		19	14	33	2,474
	2014	1	5	14	19	1	2	5		8	13	21	2,117

NUMBER UNSATISFACTORY (Level 1)

Test	Year	White	African Amer	Hispanic	Econ Disadv	Special Educ	LEP	At Risk	Migrant	Male	Female	All	District
ALGEBRA I (GRADE 8)	2012	*	*	2	3		1	3		2	2	4	151
	2013		*	0	0	*	0	0		0	0	0	115
	2014	*	*	0	0	*	*	*		0	0	0	60
Tests Taken	2012	2	4	38	43		16	13		26	21	47	2,554
	2013		3	27	30	1	8	13		19	14	33	2,474
	2014	1	5	14	19	1	2	5		8	13	21	2,117

PERCENTAGE ADVANCED (Level 3)

Test	Year	White	African Amer	Hispanic	Econ Disadv	Special Educ	LEP	At Risk	Migrant	Male	Female	All	District
ALGEBRA I (GRADE 8)	2012	*	*	18.4	23.3		18.8	16.7		15.4	28.6	21.3	19.0
	2013		*	14.8	16.7	*	0.0	7.7		21.1	7.1	15.2	24.2
	2014	*	*	28.6	26.3	*	*	*		25.0	23.1	23.8	28.8
Tests Taken	2012	2	4	38	43		16	24		26	21	47	2,554
	2013		3	27	30	1	8	13		19	14	33	2,474
	2014	1	5	14	19	1	2	5		8	13	21	2,117

AVERAGE PERCENTAGE OF ITEMS CORRECT BY REPORTING CATEGORY

ALGEBRA I (GRADE 8)	1. Functional Relationships	2. Properties and Attributes of Functions	3. Linear Functions	4. Linear Equations and Inequalities	5. Quadratic and Other Nonlinear Functions
2012	69.1	61.7	60.3	56.6	67.4
2013	66.3	64.9	69.9	65.5	65.3
2014	73.2	64.7	67.3	72.4	64.6

PERCENTAGE SATISFACTORY (Levels 2 or 3)

Grade	Year	White	African Amer	Hispanic	Econ Disadv	Special Educ	LEP	At Risk	Migrant	Male	Female	All	District	Number Tested (All Students)
8	2012	*	37.0	41.1	39.6	*	29.6	28.6		50.0	33.7	41.5	54.0	176
	2013		65.4	59.2	53.1	*	37.5	45.0		68.4	41.9	54.5	65.8	200
	2014	66.7	59.5	59.1	58.7	42.9	43.8	49.7	*	67.0	50.5	58.4	61.9	202

NUMBER TESTED IN GRADE 8													
2012	3	27	141	169	4	81	119		84	92	176	9,431	
2013		26	147	192	4	112	151		95	105	200	8,998	
2014	6	42	132	184	7	105	153	1	97	105	202	9,466	

NUMBER UNSATISFACTORY (Level 1)

Grade	Year	White	African Amer	Hispanic	Econ Disadv	Special Educ	LEP	At Risk	Migrant	Male	Female	All	District	Number Tested (All Students)
8	2012	*	17	83	102	*	57	85		42	61	103	4335	176
	2013		9	60	90	*	70	83		30	61	91	3074	200
	2014	2	17	54	76	4	59	77	*	32	52	84	3605	202

NUMBER TESTED IN GRADE 8													
2012	3	27	141	169	4	81	119		84	92	176	9,431	
2013		26	147	192	4	112	151		95	105	200	8,998	
2014	6	42	132	184	7	105	153	1	97	105	202	9,466	

PERCENTAGE ADVANCED (Level 3)

Grade	Year	White	African Amer	Hispanic	Econ Disadv	Special Educ	LEP	At Risk	Migrant	Male	Female	All	District	Number Tested (All Students)
8	2012	*	3.7	0.0	0.6	*	0.0	0.0		0.0	1.1	0.6	4.2	176
	2013		7.7	3.4	3.6	*	0.9	2.0		6.3	1.0	3.5	7.1	200
	2014	16.7	4.8	7.6	6.5	14.3	2.9	3.9	*	9.3	4.8	6.9	11.3	202

NUMBER TESTED IN GRADE 8													
2012	3	27	141	169	4	81	119		84	92	176	9,431	
2013		26	147	192	4	112	151		95	105	200	8,998	
2014	6	42	132	184	7	105	153	1	97	105	202	9,466	

AVERAGE PERCENTAGE OF ITEMS CORRECT BY REPORTING CATEGORY

Grade	Year	REPORTING CATEGORY			
		1. Matter and Energy	2. Force, Motion, and Energy	3. Earth and Space	4. Organisms and Environments
8	2012	46.4	53.5	49.2	54.7
	2013	58.7	54.3	48.3	52.4
	2014	60.3	59.5	53.7	61.7

PERCENTAGE SATISFACTORY (Levels 2 or 3)

Grade	Year	White	African Amer	Hispanic	Econ Disadv	Special Educ	LEP	At Risk	Migrant	Male	Female	All	District	Number Tested (All Students)
8	2012	*	65.4	45.1	45.6	*	29.3	34.5		52.4	43.5	47.7	52.5	176
	2013		57.1	51.7	48.2	*	31.9	39.1		58.2	39.8	48.5	59.3	206
	2014	66.7	54.8	55.7	57.4	28.6	46.7	47.4	*	64.6	47.6	55.7	53.5	201

NUMBER TESTED IN GRADE 8													
2012	3	26	142	169	5	82	119		84	92	176	9,392	
2013		28	147	197	5	116	156		98	108	206	8,991	
2014	6	42	131	183	7	105	152	1	96	105	201	9,464	

NUMBER UNSATISFACTORY (Level 1)

Grade	Year	White	African Amer	Hispanic	Econ Disadv	Special Educ	LEP	At Risk	Migrant	Male	Female	All	District	Number Tested (All Students)
8	2012	*	9	78	92	*	58	78		40	52	92	4462	176
	2013		12	71	102	*	79	95		41	65	106	3656	206
	2014	2	19	58	78	5	56	80	*	34	55	89	4402	201

NUMBER TESTED IN GRADE8													
2012	3	26	142	169	5	82	119		84	92	176	9,392	
2013		28	147	197	5	116	156		98	108	206	8,991	
2014	6	42	131	183	7	105	152	1	96	105	201	9,464	

PERCENTAGE ADVANCED (Level 3)

Grade	Year	White	African Amer	Hispanic	Econ Disadv	Special Educ	LEP	At Risk	Migrant	Male	Female	All	District	Number Tested (All Students)
8	2012	*	11.5	4.2	4.7	*	0.0	0.8		7.1	3.3	5.1	7.1	176
	2013		10.7	3.4	4.1	*	0.9	2.6		6.1	1.9	3.9	8.8	206
	2014	0.0	9.5	7.6	6.0	0.0	3.8	3.9	*	9.4	4.8	7.0	7.3	201

NUMBER TESTED IN GRADE 8													
2012	3	26	142	169	5	82	119		84	92	176	9,392	
2013		28	147	197	5	116	156		98	108	206	8,991	
2014	6	42	131	183	7	105	152	1	96	105	201	9,464	

AVERAGE PERCENTAGE OF ITEMS CORRECT BY REPORTING CATEGORY

Grade	Year	REPORTING CATEGORY			
		1. History	2. Geography and Culture	3. Government and Citizenship	4. Economics, Science, Technology, and Society
8	2012	47.7	51.0	48.7	45.7
	2013	54.0	55.6	45.1	45.8
	2014	55.0	42.1	55.2	60.2

PERCENTAGE SATISFACTORY (Levels 2 or 3)

Grade	Year	White	African Amer	Hispanic	Econ Disadv	Special Educ	LEP	At Risk	Migrant	Male	Female	All	District	Number Tested (All Students)
6	2012	*	*	*	19.0		19.0	20.5		22.7	15.0	19.0	22.8	42
	2013		*	50.0	36.8		33.3	36.8		28.6	42.9	33.3	30.6	21
	2014	*	*	*	20.0	*	18.5	21.7		12.5	27.3	18.5	29.0	27
7	2012	*	0.0	0.0	12.7		12.3	12.2		11.5	12.9	12.3	16.9	57
	2013	*		28.6	11.8		11.1	14.3		10.0	12.5	11.1	24.3	18
	2014		10.0	*	23.3		21.9	21.9		14.3	27.8	21.9	24.8	32
8	2012	*	*	0.0	0.0		0.0	0.0		0.0	0.0	0.0	0.0	63
	2013	*	*	0.0	15.4		14.3	15.4		0.0	30.8	14.3	25.5	28
	2014	*	*	50.0	31.3		34.1	35.9	*	28.6	46.2	34.1	33.2	41
6-8	2012	*	0.0	8.7	9.4		9.3	10.4		9.8	8.8	9.3	12.7	162
	2013	*	*	21.7	21.0		19.4	22.0		12.8	28.6	19.4	26.8	67
	2014	*	23.5	37.5	25.3	*	26.0	27.7	*	20.7	33.3	26.0	29.1	100

NUMBER TESTED IN GRADES 6-8													
2012	5	12	23	159		162	135		82	80	162	620	
2013	3	3	23	62		67	59		39	28	67	634	
2014	5	17	16	87	1	100	94	1	58	42	100	722	

NUMBER UNSATISFACTORY (Level 1)

Grade	Year	White	African Amer	Hispanic	Econ Disadv	Special Educ	LEP	At Risk	Migrant	Male	Female	All	District	Number Tested (All Students)
6	2012	*	*	*	34		34	31		17	17	34	146	42
	2013		*	3	12		14	12		10	4	14	150	21
	2014	*	*	*	20	*	22	18		14	8	22	171	27
7	2012	*	6	8	48		50	43		23	27	50	177	57
	2013	*		5	15		16	12		9	7	16	162	18
	2014		9	*	23		25	25		12	13	25	176	32
8	2012	*	*	11	62		63	47		34	29	63	218	63
	2013	*	*	10	22		24	22		15	9	24	152	28
	2014	*	*	5	22		27	25	*	20	7	27	165	41
6-8	2012	*	12	21	144		147	121		74	73	147	541	162
	2013	*	*	18	49		54	46		34	20	54	464	67
	2014	*	13	10	65	*	74	68	*	46	28	74	512	100

NUMBER TESTED IN GRADES 6-8													
2012	5	12	23	159		162	135		82	80	162	620	
2013	3	3	23	62		67	59		39	28	67	634	
2014	5	17	16	87	1	100	94	1	58	42	100	722	

PERCENTAGE ADVANCED (Level 3)

Grade	Year	White	African Amer	Hispanic	Econ Disadv	Special Educ	LEP	At Risk	Migrant	Male	Female	All	District	Number Tested (All Students)
6	2012	*	*	*	2.4		2.4	2.6		0.0	5.0	2.4	1.1	42
	2013		*	0.0	5.3		4.8	5.3		7.1	0.0	4.8	2.3	21
	2014	*	*	*	0.0	*	0.0	0.0		0.0	0.0	0.0	3.3	27
7	2012	*	0.0	0.0	0.0		0.0	0.0		0.0	0.0	0.0	0.0	57
	2013	*		0.0	0.0		0.0	0.0		0.0	0.0	0.0	0.9	18
	2014		0.0	*	0.0		0.0	0.0		0.0	0.0	0.0	0.0	32
8	2012	*	*	0.0	0.0		0.0	0.0		0.0	0.0	0.0	0.0	63
	2013	*	*	0.0	0.0		0.0	0.0		0.0	0.0	0.0	0.0	28
	2014	*	*	0.0	0.0		0.0	0.0	*	0.0	0.0	0.0	0.4	41
6-8	2012	*	0.0	0.0	0.6		0.6	0.7		0.0	1.3	0.6	0.3	162
	2013	*	*	0.0	1.6		1.5	1.7		2.6	0.0	1.5	1.1	67
	2014	*	0.0	0.0	0.0	*	0.0	0.0	*	0.0	0.0	0.0	1.2	100

NUMBER TESTED IN GRADE 6-8													
2012	5	12	23	159		162	135		82	80	162	620	
2013	3	3	23	62		67	59		39	28	67	634	
2014	5	17	16	87	1	100	94	1	58	42	100	722	

AVERAGE PERCENTAGE OF ITEMS CORRECT BY REPORTING CATEGORY

Grade	Year	REPORTING CATEGORY				
		1. Numbers, Operations, and Quantitative Reasoning	2. Patterns, Relationships, and Algebraic Reasoning	3. Geometry and Spatial Reasoning	4. Measurement	5. Probability and Statistics
6	2012	25.6	31.2	29.2	32.4	26.8
	2013	41.4	43.7	50.0	41.1	31.0
	2014	27.5	36.4	39.4	30.6	27.8
7	2012	24.3	32.1	33.3	31.6	31.6
	2013	31.2	27.4	31.1	19.4	31.1
	2014	26.0	32.9	34.1	27.3	30.3
8	2012	33.8	27.0	24.8	31.6	21.0
	2013	37.0	31.6	23.2	30.8	27.1
	2014	40.4	36.2	33.5	40.2	30.7
6-8	2012	28.3	29.9	28.9	31.8	26.2
	2013	36.8	34.2	33.7	31.0	29.4
	2014	32.3	35.2	35.3	33.5	29.8

PERCENTAGE SATISFACTORY (Levels 2 or 3)

Grade	Year	White	African Amer	Hispanic	Econ Disadv	Special Educ	LEP	At Risk	Migrant	Male	Female	All	District	Number Tested (All Students)
8	2012	*	0.0	0.0	6.3		6.3	6.0		5.7	6.9	6.3	14.2	64
	2013	*	*	0.0	17.4		16.7	17.4		7.1	30.0	16.7	13.3	24
	2014	*	*	40.0	25.0		24.4	25.6		17.9	38.5	24.4	17.0	41

NUMBER TESTED IN GRADE 8													
2012	2	6	10	63		64	50		35	29	64	226	
2013	1	1	9	23		24	23		14	10	24	210	
2014	4	3	10	32		41	39		28	13	41	277	

NUMBER UNSATISFACTORY (Level 1)

Grade	Year	White	African Amer	Hispanic	Econ Disadv	Special Educ	LEP	At Risk	Migrant	Male	Female	All	District	Number Tested (All Students)
8	2012	*	6	10	59		60	47		33	27	60	194	64
	2013	*	*	9	19		20	19		13	7	20	182	24
	2014	*	*	6	24		31	29		23	8	31	230	41

NUMBER TESTED IN GRADE 8													
2012	2	6	10	63		64	50		35	29	64	226	
2013	1	1	9	23		24	23		14	10	24	210	
2014	4	3	10	32		41	39		28	13	41	277	

PERCENTAGE ADVANCED (Level 3)

Grade	Year	White	African Amer	Hispanic	Econ Disadv	Special Educ	LEP	At Risk	Migrant	Male	Female	All	District	Number Tested (All Students)
8	2012	*	0.0	0.0	0.0		0.0	0.0		0.0	0.0	0.0	0.0	64
	2013	*	*	0.0	0.0		0.0	0.0		0.0	0.0	0.0	0.0	24
	2014	*	*	0.0	0.0		0.0	0.0		0.0	0.0	0.0	0.0	41

NUMBER TESTED IN GRADE 8													
2012	2	6	10	63		64	50		35	29	64	226	
2013	1	1	9	23		24	23		14	10	24	210	
2014	4	3	10	32		41	39		28	13	41	277	

AVERAGE PERCENTAGE OF ITEMS CORRECT BY REPORTING CATEGORY

Grade	Year	REPORTING CATEGORY			
		1. Matter and Energy	2. Force, Motion, and Energy	3. Earth and Space	4. Organisms and Environments
8	2012	33.1	31.8	33.5	35.5
	2013	36.6	39.2	40.2	38.1
	2014	44.6	37.8	49.3	40.9

PERCENTAGE SATISFACTORY (Levels 2 or 3)

Grade	Year	White	African Amer	Hispanic	Econ Disadv	Special Educ	LEP	At Risk	Migrant	Male	Female	All	District	Number Tested (All Students)
8	2012	*	16.7	10.0	12.7		12.5	12.0		17.1	6.9	12.5	11.1	64
	2013	*	*	0.0	16.7		15.8	16.7		8.3	28.6	15.8	18.6	19
	2014	*	*	20.0	18.8		26.8	28.2		21.4	38.5	26.8	11.0	41

NUMBER TESTED IN GRADE 8													
2012	2	6	10	63		64	50		35	29	64	226	
2013	1	1	9	18		19	18		12	7	19	204	
2014	4	3	10	32		41	39		28	13	41	272	

NUMBER UNSATISFACTORY (Level 1)

Grade	Year	White	African Amer	Hispanic	Econ Disadv	Special Educ	LEP	At Risk	Migrant	Male	Female	All	District	Number Tested (All Students)
8	2012	*	5	9	55		56	44		29	27	56	201	64
	2013	*	*	9	15		16	15		11	5	16	166	19
	2014	*	*	8	26		30	28		22	8	30	242	41

NUMBER TESTED IN GRADE8													
2012	2	6	10	63		64	50		35	29	64	226	
2013	1	1	9	18		19	18		12	7	19	204	
2014	4	3	10	32		41	39		28	13	41	272	

PERCENTAGE ADVANCED (Level 3)

Grade	Year	White	African Amer	Hispanic	Econ Disadv	Special Educ	LEP	At Risk	Migrant	Male	Female	All	District	Number Tested (All Students)
8	2012	*	0.0	0.0	0.0		0.0	0.0		0.0	0.0	0.0	0.0	64
	2013	*	*	0.0	0.0		0.0	0.0		0.0	0.0	0.0	1.0	19
	2014	*	*	0.0	0.0		0.0	0.0		0.0	0.0	0.0	0.4	41

NUMBER TESTED IN GRADE 8													
2012	2	6	10	63		64	50		35	29	64	226	
2013	1	1	9	18		19	18		12	7	19	204	
2014	4	3	10	32		41	39		28	13	41	272	

AVERAGE PERCENTAGE OF ITEMS CORRECT BY REPORTING CATEGORY

Grade	Year	REPORTING CATEGORY			
		1. History	2. Geography and Culture	3. Government and Citizenship	4. Economics, Science, Technology, and Society
8	2012	30.6	35.2	33.9	32.2
	2013	30.0	35.5	28.5	25.7
	2014	37.3	40.9	41.1	37.5

PERCENTAGE SATISFACTORY (Levels 2 or 3)

Grade	Year	White	African Amer	Hispanic	Econ Disadv	Special Educ	LEP	At Risk	Migrant	Male	Female	All	District	Number Tested (All Students)
6	2012		85.7	60.0	70.6	72.2	58.3	70.6		68.8	*	72.2	65.5	18
	2013		83.3	66.7	73.3	73.3	66.7	73.3		75.0	71.4	73.3	55.9	15
	2014		*	25.0	35.0	33.3	20.0	18.8		38.5	25.0	33.3	51.6	21
7	2012	*	62.5	37.5	50.0	52.9	44.4	52.9		40.0	71.4	52.9	57.3	17
	2013		*	81.8	62.5	64.7	80.0	64.3		64.3	*	64.7	61.0	17
	2014	*	*	77.8	75.0	76.9	88.9	83.3		*	62.5	76.9	55.4	13
8	2012		*	75.0	77.3	78.3	76.5	78.9		72.2	*	78.3	58.0	23
	2013	*	66.7	50.0	57.1	60.0	42.9	53.8		33.3	77.8	60.0	74.5	15
	2014		*	87.5	90.0	83.3	88.9	90.9		90.0	*	83.3	75.0	12
6-8	2012	*	80.0	61.8	67.3	69.0	63.2	67.9		63.6	85.7	69.0	60.3	58
	2013	*	64.7	67.9	64.4	66.0	65.4	64.3		60.7	73.7	66.0	63.6	47
	2014	*	70.0	54.5	59.5	58.7	57.6	59.0		67.9	44.4	58.7	60.0	46

NUMBER TESTED IN GRADES 6-8													
2012	1	20	34	55	58	38	53			44	14	58	1,571
2013	1	17	28	45	47	26	42			28	19	47	1,687
2014	1	10	33	42	46	33	39			28	18	46	1,689

NUMBER UNSATISFACTORY (Level 1)

Grade	Year	White	African Amer	Hispanic	Econ Disadv	Special Educ	LEP	At Risk	Migrant	Male	Female	All	District	Number Tested (All Students)
6	2012		1	4	5	5	5	5		5	*	5	181	18
	2013		1	3	4	4	3	4		2	2	4	270	15
	2014		*	12	13	14	12	13		8	6	14	281	21
7	2012	*	3	5	8	8	5	8		6	2	8	244	17
	2013		*	2	6	6	2	5		5	*	6	202	17
	2014	*	*	2	3	3	1	2		*	3	3	266	13
8	2012		*	4	5	5	4	4		5	*	5	199	23
	2013	*	2	4	6	6	4	6		4	2	6	142	15
	2014		*	1	1	2	1	1		1	*	2	128	12
6-8	2012	*	4	13	18	18	14	17		16	2	18	624	58
	2013	*	6	9	16	16	9	15		11	5	16	614	47
	2014	*	3	15	17	19	14	16		9	10	19	675	46

NUMBER TESTED IN GRADES 6-8													
2012	1	20	34	55	58	38	53		44	14	58	1,571	
2013	1	17	28	45	47	26	42		28	19	47	1,687	
2014	1	10	33	42	46	33	39		28	18	46	1,689	

PERCENTAGE ADVANCED (Level 3)

Grade	Year	White	African Amer	Hispanic	Econ Disadv	Special Educ	LEP	At Risk	Migrant	Male	Female	All	District	Number Tested (All Students)
6	2012		28.6	0.0	11.8	11.1	0.0	5.9		6.3	*	11.1	3.6	18
	2013		16.7	11.1	13.3	13.3	11.1	13.3		25.0	0.0	13.3	3.1	15
	2014		*	0.0	0.0	0.0	0.0	0.0		0.0	0.0	0.0	2.9	21
7	2012	*	0.0	12.5	6.3	5.9	11.1	5.9		10.0	0.0	5.9	1.0	17
	2013		*	9.1	6.3	5.9	10.0	7.1		7.1	*	5.9	3.5	17
	2014	*	*	0.0	8.3	7.7	0.0	8.3		*	0.0	7.7	3.9	13
8	2012		*	0.0	0.0	0.0	0.0	0.0		0.0	*	0.0	1.1	23
	2013	*	0.0	0.0	0.0	0.0	0.0	0.0		0.0	0.0	0.0	2.5	15
	2014		*	0.0	0.0	0.0	0.0	0.0		0.0	*	0.0	2.9	12
6-8	2012	*	10.0	2.9	5.5	5.2	2.6	3.8		4.5	7.1	5.2	1.9	58
	2013	*	5.9	7.1	6.7	6.4	7.7	7.1		10.7	0.0	6.4	3.0	47
	2014	*	10.0	0.0	2.4	2.2	0.0	2.6		3.6	0.0	2.2	3.3	46

NUMBER TESTED IN GRADE 6-8													
2012	1	20	34	55	58	38	53			44	14	58	1,571
2013	1	17	28	45	47	26	42			28	19	47	1,687
2014	1	10	33	42	46	33	39			28	18	46	1,689

AVERAGE PERCENTAGE OF ITEMS CORRECT BY REPORTING CATEGORY

Grade	Year	REPORTING CATEGORY		
		1. Understanding Across Genres (GR 3-5) 1. Understanding/Analysis Across Genres (GR 6-8)	2. Understanding/Analysis of Literary Texts	3. Understanding/Analysis of Informational Texts
6	2012	43.1	62.2	45.2
	2013	55.0	57.1	57.1
	2014	41.7	47.9	48.6
7	2012	55.1	45.3	41.6
	2013	52.9	55.4	54.9
	2014	63.5	53.8	48.2
8	2012	57.1	52.4	58.7
	2013	60.0	56.3	46.3
	2014	70.8	58.8	60.4
6-8	2012	52.2	53.4	49.5
	2013	55.9	56.2	52.9
	2014	55.4	52.4	51.6

PERCENTAGE SATISFACTORY (Levels 2 or 3)

Grade	Year	White	African Amer	Hispanic	Econ Disadv	Special Educ	LEP	At Risk	Migrant	Male	Female	All	District	Number Tested (All Students)
7	2012	*	50.0	62.5	52.9	57.9	60.0	57.9		36.4	87.5	57.9	56.7	19
	2013		*	81.8	68.8	70.6	90.0	71.4		64.3	*	70.6	63.7	17
	2014	*	*	54.5	64.3	66.7	63.6	71.4		71.4	62.5	66.7	62.9	15

NUMBER TESTED IN GRADE 7													
2012	1	10	8	17	19	10	19		11	8	19	586	
2013		5	11	16	17	10	14		14	3	17	509	
2014	1	3	11	14	15	11	14		7	8	15	599	

NUMBER UNSATISFACTORY (Level 1)

Grade	Year	White	African Amer	Hispanic	Econ Disadv	Special Educ	LEP	At Risk	Migrant	Male	Female	All	District	Number Tested (All Students)
7	2012	*	5	3	8	8	4	8		7	1	8	254	19
	2013		*	2	5	5	1	4		5	*	5	185	17
	2014	*	*	5	5	5	4	4		2	3	5	222	15

NUMBER TESTED IN GRADE 7													
2012	1	10	8	17	19	10	19		11	8	19	586	
2013		5	11	16	17	10	14		14	3	17	509	
2014	1	3	11	14	15	11	14		7	8	15	599	

PERCENTAGE ADVANCED (Level 3)

Grade	Year	White	African Amer	Hispanic	Econ Disadv	Special Educ	LEP	At Risk	Migrant	Male	Female	All	District	Number Tested (All Students)
7	2012	*	10.0	0.0	11.8	10.5	10.0	10.5		0.0	25.0	10.5	2.7	19
	2013		*	9.1	6.3	5.9	10.0	7.1		0.0	*	5.9	6.3	17
	2014	*	*	0.0	0.0	0.0	0.0	0.0		0.0	0.0	0.0	6.3	15

NUMBER TESTED IN GRADE 7													
2012	1	10	8	17	19	10	19		11	8	19	586	
2013		5	11	16	17	10	14		14	3	17	509	
2014	1	3	11	14	15	11	14		7	8	15	599	

AVERAGE PERCENTAGE OF ITEMS CORRECT BY REPORTING CATEGORY

Grade	Year	REPORTING CATEGORY		
		1. Composition ¹ GR 4: Personal Narrative GR 7: Expository	2. Revision	3. Editing
7	2012	0.8	50.2	54.6
	2013	2.4	56.6	52.0
	2014	3.3	45.6	53.3

¹Average score points (range 0-6). A STAAR M composition is rated twice on a scale of 0 to 3, and the ratings are summed to determine score points for the composition. Score point scale: 0=Non-scorable; 2=Very Limited; 3=between Very Limited and Basic; 4=Basic; 5=between Basic and Satisfactory; 6=Satisfactory

PERCENTAGE SATISFACTORY (Levels 2 or 3)

Grade	Year	White	African Amer	Hispanic	Econ Disadv	Special Educ	LEP	At Risk	Migrant	Male	Female	All	District	Number Tested (All Students)
6	2012		33.3	44.4	40.0	43.8	45.5	46.7		42.9	*	43.8	46.2	16
	2013	*	71.4	44.4	58.8	58.8	50.0	58.8		55.6	62.5	58.8	54.3	17
	2014	*	*	68.8	57.1	60.9	66.7	66.7		53.3	75.0	60.9	52.0	23
7	2012	*	66.7	50.0	57.1	62.5	62.5	62.5		37.5	87.5	62.5	50.5	16
	2013		*	55.6	46.7	46.7	62.5	41.7		46.2	*	46.7	49.4	15
	2014	*	*	36.4	36.4	50.0	45.5	53.8		66.7	37.5	50.0	48.8	14
8	2012		*	75.0	57.1	54.5	62.5	57.9		43.8	83.3	54.5	46.2	22
	2013	*	100.0	62.5	78.6	80.0	57.1	76.9		50.0	100.0	80.0	71.4	15
	2014		*	100.0	100.0	100.0	100.0	100.0		100.0	*	100.0	71.0	12
6-8	2012	*	42.1	61.3	52.0	53.7	57.1	56.0		42.1	81.3	53.7	47.7	54
	2013	*	66.7	53.8	60.9	61.7	56.0	59.5		50.0	78.9	61.7	58.5	47
	2014	*	70.0	65.7	62.8	67.3	68.6	71.8		71.0	61.1	67.3	56.7	49

NUMBER TESTED IN GRADES 6-8													
2012	1	19	31	50	54	35	50			38	16	54	1,554
2013	2	18	26	46	47	25	42			28	19	47	1,659
2014	2	10	35	43	49	35	39			31	18	49	1,684

NUMBER UNSATISFACTORY (Level 1)

Grade	Year	White	African Amer	Hispanic	Econ Disadv	Special Educ	LEP	At Risk	Migrant	Male	Female	All	District	Number Tested (All Students)
6	2012		4	5	9	9	6	8		8	*	9	276	16
	2013	*	2	5	7	7	5	7		4	3	7	272	17
	2014	*	*	5	9	9	5	5		7	2	9	271	23
7	2012	*	3	3	6	6	3	6		5	1	6	276	16
	2013		*	4	8	8	3	7		7	*	8	257	15
	2014	*	*	7	7	7	6	6		2	5	7	310	14
8	2012		*	4	9	10	6	8		9	1	10	260	22
	2013	*	0	3	3	3	3	3		3	0	3	159	15
	2014		*	0	0	0	0	0		0	*	0	149	12
6-8	2012	*	11	12	24	25	15	22		22	3	25	812	54
	2013	*	6	12	18	18	11	17		14	4	18	688	47
	2014	*	3	12	16	16	11	11		9	7	16	730	49

NUMBER TESTED IN GRADES 6-8													
2012	1	19	31	50	54	35	50			38	16	54	1,554
2013	2	18	26	46	47	25	42			28	19	47	1,659
2014	2	10	35	43	49	35	39			31	18	49	1,684

PERCENTAGE ADVANCED (Level 3)

Grade	Year	White	African Amer	Hispanic	Econ Disadv	Special Educ	LEP	At Risk	Migrant	Male	Female	All	District	Number Tested (All Students)
6	2012		0.0	0.0	0.0	0.0	0.0	0.0		0.0	*	0.0	5.5	16
	2013	*	14.3	0.0	5.9	5.9	0.0	5.9		11.1	0.0	5.9	4.9	17
	2014	*	*	6.3	4.8	8.7	6.7	6.7		6.7	12.5	8.7	3.4	23
7	2012	*	0.0	0.0	0.0	0.0	0.0	0.0		0.0	0.0	0.0	1.1	16
	2013		*	0.0	0.0	0.0	0.0	0.0		0.0	*	0.0	3.0	15
	2014	*	*	0.0	0.0	0.0	0.0	0.0		0.0	0.0	0.0	2.3	14
8	2012		*	12.5	9.5	9.1	12.5	10.5		0.0	33.3	9.1	1.2	22
	2013	*	0.0	0.0	0.0	0.0	0.0	0.0		0.0	0.0	0.0	2.2	15
	2014		*	0.0	0.0	0.0	0.0	0.0		0.0	*	0.0	1.9	12
6-8	2012	*	0.0	6.5	4.0	3.7	5.7	4.0		0.0	12.5	3.7	2.6	54
	2013	*	5.6	0.0	2.2	2.1	0.0	2.4		3.6	0.0	2.1	3.4	47
	2014	*	10.0	2.9	2.3	4.1	2.9	2.6		3.2	5.6	4.1	2.6	49

NUMBER TESTED IN GRADE 6-8													
2012	1	19	31	50	54	35	50			38	16	54	1,554
2013	2	18	26	46	47	25	42			28	19	47	1,659
2014	2	10	35	43	49	35	39			31	18	49	1,684

AVERAGE PERCENTAGE OF ITEMS CORRECT BY REPORTING CATEGORY

Grade	Year	REPORTING CATEGORY				
		1. Numbers, Operations, and Quantitative Reasoning	2. Patterns, Relationships, and Algebraic Reasoning	3. Geometry and Spatial Reasoning	4. Measurement	5. Probability and Statistics
6	2012	42.0	40.0	44.8	32.3	38.5
	2013	47.5	52.9	51.0	30.4	67.6
	2014	44.1	51.3	52.9	41.3	60.9
7	2012	39.8	37.5	36.7	46.9	43.8
	2013	33.3	42.0	48.3	37.8	42.5
	2014	39.6	45.7	53.6	34.5	46.4
8	2012	40.0	54.1	40.9	42.7	47.2
	2013	42.0	50.3	43.3	40.0	52.5
	2014	45.0	49.2	43.1	51.7	62.5
6-8	2012	40.5	45.0	40.8	40.9	43.6
	2013	41.2	48.6	47.7	35.8	54.8
	2014	43.0	49.2	50.7	41.9	57.1

PERCENTAGE SATISFACTORY (Levels 2 or 3)

Grade	Year	White	African Amer	Hispanic	Econ Disadv	Special Educ	LEP	At Risk	Migrant	Male	Female	All	District	Number Tested (All Students)
8	2012		*	66.7	62.5	60.0	63.2	59.1		47.1	87.5	60.0	58.2	25
	2013	*	83.3	42.9	53.8	57.1	16.7	50.0		*	66.7	57.1	59.3	14
	2014		*	75.0	75.0	81.8	75.0	80.0		77.8	*	81.8	63.5	11

NUMBER TESTED IN GRADE 8													
2012		5	18	24	25	19	22		17	8	25	457	
2013	1	6	7	13	14	6	12		5	9	14	526	
2014		3	8	8	11	8	10		9	2	11	474	

NUMBER UNSATISFACTORY (Level 1)

Grade	Year	White	African Amer	Hispanic	Econ Disadv	Special Educ	LEP	At Risk	Migrant	Male	Female	All	District	Number Tested (All Students)
8	2012		*	6	9	10	7	9		9	1	10	191	25
	2013	*	1	4	6	6	5	6		*	3	6	214	14
	2014		*	2	2	2	2	2		2	*	2	173	11

NUMBER TESTED IN GRADE 8													
2012		5	18	24	25	19	22		17	8	25	457	
2013	1	6	7	13	14	6	12		5	9	14	526	
2014		3	8	8	11	8	10		9	2	11	474	

PERCENTAGE ADVANCED (Level 3)

Grade	Year	White	African Amer	Hispanic	Econ Disadv	Special Educ	LEP	At Risk	Migrant	Male	Female	All	District	Number Tested (All Students)
8	2012		*	5.6	4.2	4.0	0.0	0.0		5.9	0.0	4.0	0.4	25
	2013	*	0.0	0.0	0.0	0.0	0.0	0.0		*	0.0	0.0	2.5	14
	2014		*	12.5	12.5	9.1	12.5	10.0		11.1	*	9.1	3.8	11

NUMBER TESTED IN GRADE 8													
2012		5	18	24	25	19	22		17	8	25	457	
2013	1	6	7	13	14	6	12		5	9	14	526	
2014		3	8	8	11	8	10		9	2	11	474	

AVERAGE PERCENTAGE OF ITEMS CORRECT BY REPORTING CATEGORY

Grade	Year	REPORTING CATEGORY			
		1. Matter and Energy	2. Force, Motion, and Energy	3. Earth and Space	4. Organisms and Environments
8	2012	60.0	64.8	54.5	48.0
	2013	53.2	60.0	53.9	56.5
	2014	66.1	68.2	68.6	62.8

PERCENTAGE SATISFACTORY (Levels 2 or 3)

Grade	Year	White	African Amer	Hispanic	Econ Disadv	Special Educ	LEP	At Risk	Migrant	Male	Female	All	District	Number Tested (All Students)
8	2012		*	70.6	65.2	62.5	66.7	61.9		47.1	100.0	62.5	52.3	24
	2013	*	66.7	42.9	53.8	57.1	33.3	50.0		*	77.8	57.1	59.5	14
	2014		*	87.5	87.5	90.9	87.5	90.0		100.0	*	90.9	59.3	11

NUMBER TESTED IN GRADE 8													
2012		5	17	23	24	18	21		17	7	24	451	
2013	1	6	7	13	14	6	12		5	9	14	516	
2014		3	8	8	11	8	10		9	2	11	479	

NUMBER UNSATISFACTORY (Level 1)

Grade	Year	White	African Amer	Hispanic	Econ Disadv	Special Educ	LEP	At Risk	Migrant	Male	Female	All	District	Number Tested (All Students)
8	2012		*	5	8	9	6	8		9	0	9	215	24
	2013	*	2	4	6	6	4	6		*	2	6	209	14
	2014		*	1	1	1	1	1		0	*	1	195	11

NUMBER TESTED IN GRADE8													
2012		5	17	23	24	18	21		17	7	24	451	
2013	1	6	7	13	14	6	12		5	9	14	516	
2014		3	8	8	11	8	10		9	2	11	479	

PERCENTAGE ADVANCED (Level 3)

Grade	Year	White	African Amer	Hispanic	Econ Disadv	Special Educ	LEP	At Risk	Migrant	Male	Female	All	District	Number Tested (All Students)
8	2012		*	17.6	13.0	12.5	11.1	9.5		11.8	14.3	12.5	2.9	24
	2013	*	0.0	0.0	0.0	0.0	0.0	0.0		*	0.0	0.0	1.9	14
	2014		*	0.0	0.0	0.0	0.0	0.0		0.0	*	0.0	3.5	11

NUMBER TESTED IN GRADE 8													
2012		5	17	23	24	18	21		17	7	24	451	
2013	1	6	7	13	14	6	12		5	9	14	516	
2014		3	8	8	11	8	10		9	2	11	479	

AVERAGE PERCENTAGE OF ITEMS CORRECT BY REPORTING CATEGORY

Grade	Year	REPORTING CATEGORY			
		1. History	2. Geography and Culture	3. Government and Citizenship	4. Economics, Science, Technology, and Society
8	2012	49.7	54.6	59.6	56.9
	2013	45.5	50.0	42.9	64.3
	2014	55.7	67.3	57.3	71.2

PERCENTAGE DEMONSTRATING IMPROVEMENT

Grade	Level 1 in 2013		Level 2 in 2013		Level 3 in 2013		Levels 1-3 in 2013	
	Number Tested Both Years	Percentage Improved in 2014	Number Tested Both Years	Percentage Improved in 2014	Number Tested Both Years	Percentage Improved in 2014	Number Tested Both Years	Percentage Improved in 2014
6	31	35.5	34	55.9	0		65	46.2
7	31	38.7	20	55.0	0		51	45.1
8	24	29.2	31	35.5	0		55	32.7
ALL	86	34.9	85	48.2	0		171	41.5

PERFORMANCE IN 2014

Grade 2013-14 (N Rated)	Domain:	Listening		Speaking		Writing		Reading		Composite	
	2014 Level	N	%	N	%	N	%	N	%	N	%
6 (238)	Beginning	23	9.8	26	11.1	35	15.0	48	20.4	29	12.6
	Intermediate	29	12.4	45	19.2	66	28.3	73	31.1	64	27.8
	Advanced	87	37.2	97	41.5	75	32.2	83	35.3	93	40.4
	Advanced High	95	40.6	66	28.2	57	24.5	31	13.2	44	19.1
7 (184)	Beginning	8	4.4	15	8.2	18	10.1	29	15.8	15	8.4
	Intermediate	28	15.4	37	20.3	47	26.3	58	31.5	48	26.8
	Advanced	74	40.7	73	40.1	65	36.3	67	36.4	72	40.2
	Advanced High	72	39.6	57	31.3	49	27.4	30	16.3	44	24.6
8 (163)	Beginning	19	11.7	19	11.7	21	13.0	15	9.2	12	7.5
	Intermediate	21	12.9	24	14.7	49	30.4	55	33.7	38	23.6
	Advanced	74	45.4	74	45.4	44	27.3	62	38.0	71	44.1
	Advanced High	49	30.1	46	28.2	47	29.2	31	19.0	40	24.8
ALL (585)	Beginning	50	8.6	60	10.4	74	12.9	92	15.8	56	9.8
	Intermediate	78	13.5	106	18.3	162	28.3	186	32.0	150	26.3
	Advanced	235	40.6	244	42.1	184	32.1	212	36.4	236	41.4
	Advanced High	216	37.3	169	29.2	153	26.7	92	15.8	128	22.5

**PROGRESSION FROM
2013 TO 2014**

Number Rated Both Years N (%) Progressed	2014 Level	2013 Level			
		Beg	Int	Adv	Adv High
194 64 (33.0%)	Beginning	18			
	Intermediate	9	42		
	Advanced	2	10	70	
	Advanced High	0	0	43	
154 55 (35.7%)	Beginning	8			
	Intermediate	4	34		
	Advanced	0	12	57	
	Advanced High	0	1	38	
129 43 (33.3%)	Beginning	3			
	Intermediate	4	26		
	Advanced	0	5	57	
	Advanced High	0	3	31	
477 162 (34.0%)	Beginning	29			
	Intermediate	17	102		
	Advanced	2	27	184	
	Advanced High	0	4	112	

■ Indicates students who progressed at least one level from 2013 to 2014.

SEMESTER 1 TESTS

Number Tested	Averages				% Passing		District % Passing	
	% Items Correct	Scale Score	Course Mark	Course Mark (no ACP)	ACP	Course	ACP	Course

ALGEBRA I PRE-AP

22	65.8	77.2	78.9	79.1	77.3	95.2	65.2	96.3
----	------	------	------	------	------	------	------	------

BEGINNING LANGUAGE ARTS 6 FOR ESL

23	39.9	70.0	80.7	81.9	43.5	100.0	45.0	94.8
----	------	------	------	------	------	-------	------	------

BEGINNING LANGUAGE ARTS 7 FOR ESL

19	32.9	68.5	77.7	78.7	36.8	100.0	39.3	97.6
----	------	------	------	------	------	-------	------	------

BEGINNING LANGUAGE ARTS 8 FOR ESL

17	38.9	69.9	76.6	77.3	41.2	100.0	40.7	96.3
----	------	------	------	------	------	-------	------	------

BEGINNING READING 6 FOR ESL

17	40.4	68.6	78.2	79.3	47.1	94.1	42.9	90.9
----	------	------	------	------	------	------	------	------

INTERMEDIATE LANGUAGE ARTS 6 FOR ESL

11	36.4	57.6	79.9	82.4	18.2	100.0	47.4	92.1
----	------	------	------	------	------	-------	------	------

INTERMEDIATE LANGUAGE ARTS 7 FOR ESL

13	45.7	72.9	82.1	83.1	61.5	91.7	59.0	91.4
----	------	------	------	------	------	------	------	------

INTERMEDIATE LANGUAGE ARTS 8 FOR ESL

20	36.2	65.8	78.7	80.1	25.0	90.0	40.0	93.7
----	------	------	------	------	------	------	------	------

INTERMEDIATE READING 6 FOR ESL

19	32.3	61.7	77.5	79.3	10.5	84.2	54.7	94.9
----	------	------	------	------	------	------	------	------

LANGUAGE ARTS 6

217	44.9	66.9	75.8	76.7	38.2	77.1	51.1	88.5
-----	------	------	------	------	------	------	------	------

LANGUAGE ARTS 6 PRE-AP

13	71.2	78.4	82.1	82.5	92.3	100.0	79.1	98.0
----	------	------	------	------	------	-------	------	------

SEMESTER 2 TESTS

Number Tested	Averages				% Passing		District % Passing	
	% Items Correct	Scale Score	Course Mark	Course Mark (no ACP)	ACP	Course	ACP	Course

ALGEBRA I PRE-AP

--	--	--	--	--	--	--	--	--

BEGINNING LANGUAGE ARTS 6 FOR ESL

28	35.4	67.2	81.4	83.0	32.1	96.3	34.2	96.4
----	------	------	------	------	------	------	------	------

BEGINNING LANGUAGE ARTS 7 FOR ESL

23	34.2	67.1	76.8	77.8	26.1	87.0	45.1	95.5
----	------	------	------	------	------	------	------	------

BEGINNING LANGUAGE ARTS 8 FOR ESL

22	48.3	73.7	81.6	82.5	59.1	100.0	49.6	92.7
----	------	------	------	------	------	-------	------	------

BEGINNING READING 6 FOR ESL

30	37.5	68.2	79.5	80.8	50.0	93.3	44.4	96.6
----	------	------	------	------	------	------	------	------

INTERMEDIATE LANGUAGE ARTS 6 FOR ESL

15	46.2	64.1	82.5	84.6	40.0	100.0	58.3	94.3
----	------	------	------	------	------	-------	------	------

INTERMEDIATE LANGUAGE ARTS 7 FOR ESL

12	60.8	75.0	83.7	84.6	66.7	100.0	62.9	94.2
----	------	------	------	------	------	-------	------	------

INTERMEDIATE LANGUAGE ARTS 8 FOR ESL

17	47.1	71.6	82.2	83.4	52.9	100.0	61.5	96.7
----	------	------	------	------	------	-------	------	------

INTERMEDIATE READING 6 FOR ESL

15	46.9	54.5	81.0	84.0	26.7	92.9	56.2	91.4
----	------	------	------	------	------	------	------	------

LANGUAGE ARTS 6

199	50.0	69.4	76.4	77.2	52.8	83.4	56.8	85.3
-----	------	------	------	------	------	------	------	------

LANGUAGE ARTS 6 PRE-AP

14	56.8	72.4	81.6	82.6	71.4	100.0	64.3	96.1
----	------	------	------	------	------	-------	------	------

SEMESTER 1 TESTS

Number Tested	Averages				% Passing		District % Passing	
	% Items Correct	Scale Score	Course Mark	Course Mark (no ACP)	ACP	Course	ACP	Course

LANGUAGE ARTS 7

216	44.2	70.1	75.5	76.1	52.8	81.2	52.3	86.0
-----	------	------	------	------	------	------	------	------

LANGUAGE ARTS 7 PRE-AP

20	66.5	77.6	84.9	85.6	85.0	100.0	72.1	96.8
----	------	------	------	------	------	-------	------	------

LANGUAGE ARTS 8

182	54.1	70.1	80.5	81.6	51.6	87.2	56.7	87.7
-----	------	------	------	------	------	------	------	------

LANGUAGE ARTS 8 PRE-AP

27	64.8	74.3	85.4	86.5	70.4	100.0	76.4	97.3
----	------	------	------	------	------	-------	------	------

MATHEMATICS 6

246	35.8	70.4	77.5	78.3	43.9	87.6	45.6	86.2
-----	------	------	------	------	------	------	------	------

MATHEMATICS 6 PRE-AP

19	50.8	72.7	74.0	74.0	73.7	82.4	65.8	97.0
----	------	------	------	------	------	------	------	------

MATHEMATICS 7

244	44.8	73.3	79.4	80.0	63.5	90.1	49.3	84.8
-----	------	------	------	------	------	------	------	------

MATHEMATICS 7 PRE-AP

24	71.0	76.5	87.1	88.3	79.2	100.0	64.9	96.0
----	------	------	------	------	------	-------	------	------

MATHEMATICS 8

225	52.1	69.5	77.2	78.1	51.6	91.9	51.9	84.5
-----	------	------	------	------	------	------	------	------

MS BAND: LISTENING AND MUSIC ELEMENTS

45	71.8	91.5	93.7	66.7	100.0	63.8	98.2
----	------	------	------	------	-------	------	------

MS HEALTH EDUCATION

103	62.2	76.3	85.9	87.0	75.7	99.0	70.0	92.0
-----	------	------	------	------	------	------	------	------

SEMESTER 2 TESTS

Number Tested	Averages				% Passing		District % Passing	
	% Items Correct	Scale Score	Course Mark	Course Mark (no ACP)	ACP	Course	ACP	Course

LANGUAGE ARTS 7

208	58.5	71.7	78.0	78.7	60.1	88.7	59.3	82.9
-----	------	------	------	------	------	------	------	------

LANGUAGE ARTS 7 PRE-AP

--	--	--	--	--	--	--	--	--

LANGUAGE ARTS 8

167	66.2	76.4	82.5	83.2	80.8	86.3	72.6	85.9
-----	------	------	------	------	------	------	------	------

LANGUAGE ARTS 8 PRE-AP

24	64.5	76.3	88.5	89.9	83.3	100.0	75.8	96.8
----	------	------	------	------	------	-------	------	------

MATHEMATICS 6

234	39.2	69.1	77.1	78.0	44.4	82.7	42.2	81.1
-----	------	------	------	------	------	------	------	------

MATHEMATICS 6 PRE-AP

18	66.5	77.1	78.4	78.5	72.2	94.4	72.1	95.6
----	------	------	------	------	------	------	------	------

MATHEMATICS 7

239	50.9	72.7	79.2	79.9	59.4	87.2	50.1	79.6
-----	------	------	------	------	------	------	------	------

MATHEMATICS 7 PRE-AP

23	71.6	79.2	90.7	92.0	91.3	100.0	70.9	96.1
----	------	------	------	------	------	-------	------	------

MATHEMATICS 8

222	48.9	69.3	79.1	80.2	54.1	91.4	51.9	85.4
-----	------	------	------	------	------	------	------	------

MS BAND: LISTENING AND MUSIC ELEMENTS

46	79.1	92.5	94.0	82.6	100.0	85.6	96.7
----	------	------	------	------	-------	------	------

MS HEALTH EDUCATION

126	62.4	77.0	86.9	88.0	77.8	97.6	73.6	89.8
-----	------	------	------	------	------	------	------	------

SEMESTER 1 TESTS

Number Tested	Averages				% Passing		District % Passing	
	% Items Correct	Scale Score	Course Mark	Course Mark (no ACP)	ACP	Course	ACP	Course

PHYSICAL EDUCATION 6

267	72.4	94.1	96.5	64.8	100.0	74.0	99.1
-----	------	------	------	------	-------	------	------

PHYSICAL EDUCATION 7 & 8

259	81.9	90.6	91.6	81.9	100.0	83.6	98.3
-----	------	------	------	------	-------	------	------

READING 6

229	50.2	64.4	74.4	75.5	38.9	69.6	56.3	90.6
-----	------	------	------	------	------	------	------	------

READING 7

138	54.8	72.9	78.0	78.6	68.8	83.8	57.9	89.8
-----	------	------	------	------	------	------	------	------

READING 8

142	61.8	69.8	80.3	81.4	60.6	84.7	63.6	88.7
-----	------	------	------	------	------	------	------	------

READING MASTERY 7

91	41.3	64.8	72.0	72.7	26.4	70.3	50.3	84.6
----	------	------	------	------	------	------	------	------

READING MASTERY 8

62	54.6	70.4	76.5	77.1	62.9	83.9	63.1	85.0
----	------	------	------	------	------	------	------	------

SCIENCE 6

269	43.0	65.8	80.3	81.9	34.9	88.2	59.9	91.6
-----	------	------	------	------	------	------	------	------

SCIENCE 7

268	48.2	68.3	75.8	76.7	44.4	79.4	51.0	85.7
-----	------	------	------	------	------	------	------	------

SCIENCE 8 & SCIENCE 8 PRE-AP

247	55.7	70.5	80.0	81.0	56.7	88.8	64.6	90.4
-----	------	------	------	------	------	------	------	------

SOCIAL STUDIES 6

266	43.1	64.4	78.7	80.3	31.6	88.3	42.8	90.4
-----	------	------	------	------	------	------	------	------

SEMESTER 2 TESTS

Number Tested	Averages				% Passing		District % Passing	
	% Items Correct	Scale Score	Course Mark	Course Mark (no ACP)	ACP	Course	ACP	Course

PHYSICAL EDUCATION 6

256	79.4	97.4	99.4	86.7	100.0	82.8	99.0
-----	------	------	------	------	-------	------	------

PHYSICAL EDUCATION 7 & 8

237	86.8	91.1	91.6	89.0	100.0	88.6	97.2
-----	------	------	------	------	-------	------	------

READING 6

212	46.2	67.1	75.5	76.4	41.5	80.7	55.7	86.3
-----	------	------	------	------	------	------	------	------

READING 7

156	60.5	72.4	79.1	79.8	64.1	81.8	65.6	85.6
-----	------	------	------	------	------	------	------	------

READING 8

130	68.5	76.4	82.5	83.2	78.5	86.8	74.8	87.8
-----	------	------	------	------	------	------	------	------

READING MASTERY 7

49	49.7	69.2	74.7	75.2	46.9	85.1	59.4	81.4
----	------	------	------	------	------	------	------	------

READING MASTERY 8

61	60.9	73.9	81.6	82.4	70.5	91.7	71.7	85.4
----	------	------	------	------	------	------	------	------

SCIENCE 6

262	44.2	64.4	78.5	80.1	26.7	85.0	57.7	87.5
-----	------	------	------	------	------	------	------	------

SCIENCE 7

261	56.3	73.3	76.3	76.6	64.0	78.6	71.7	85.1
-----	------	------	------	------	------	------	------	------

SCIENCE 8 & SCIENCE 8 PRE-AP

244	56.6	69.7	80.1	81.2	57.0	87.2	64.5	88.8
-----	------	------	------	------	------	------	------	------

SOCIAL STUDIES 6

264	50.9	67.3	77.0	78.1	43.9	80.5	56.1	86.5
-----	------	------	------	------	------	------	------	------

SEMESTER 1 TESTS

Number Tested	Averages				% Passing		District % Passing	
	% Items Correct	Scale Score	Course Mark	Course Mark (no ACP)	ACP	Course	ACP	Course

TECHNOLOGY APPLICATIONS

131	53.8	72.3	83.6	84.9	58.0	100.0	60.4	93.7
-----	------	------	------	------	------	-------	------	------

TEXAS STUDIES 7

268	46.9	70.5	79.5	80.5	49.3	86.9	49.3	87.3
-----	------	------	------	------	------	------	------	------

U.S. STUDIES 8

228	44.6	68.0	76.2	77.2	38.2	87.1	50.5	85.9
-----	------	------	------	------	------	------	------	------

U.S. STUDIES 8 PRE-AP

19	65.3	74.0	84.7	85.9	68.4	100.0	70.3	97.8
----	------	------	------	------	------	-------	------	------

SEMESTER 2 TESTS

Number Tested	Averages				% Passing		District % Passing	
	% Items Correct	Scale Score	Course Mark	Course Mark (no ACP)	ACP	Course	ACP	Course

TECHNOLOGY APPLICATIONS

117	58.5	74.6	84.0	84.9	66.7	99.0	65.5	89.7
-----	------	------	------	------	------	------	------	------

TEXAS STUDIES 7

265	48.2	72.2	80.0	80.9	57.7	86.2	59.9	84.9
-----	------	------	------	------	------	------	------	------

U.S. STUDIES 8

225	51.6	67.7	78.2	79.4	45.8	85.7	54.3	84.4
-----	------	------	------	------	------	------	------	------

U.S. STUDIES 8 PRE-AP

18	69.7	73.2	84.9	86.2	66.7	94.4	69.5	95.0
----	------	------	------	------	------	------	------	------