

DATA PACKET

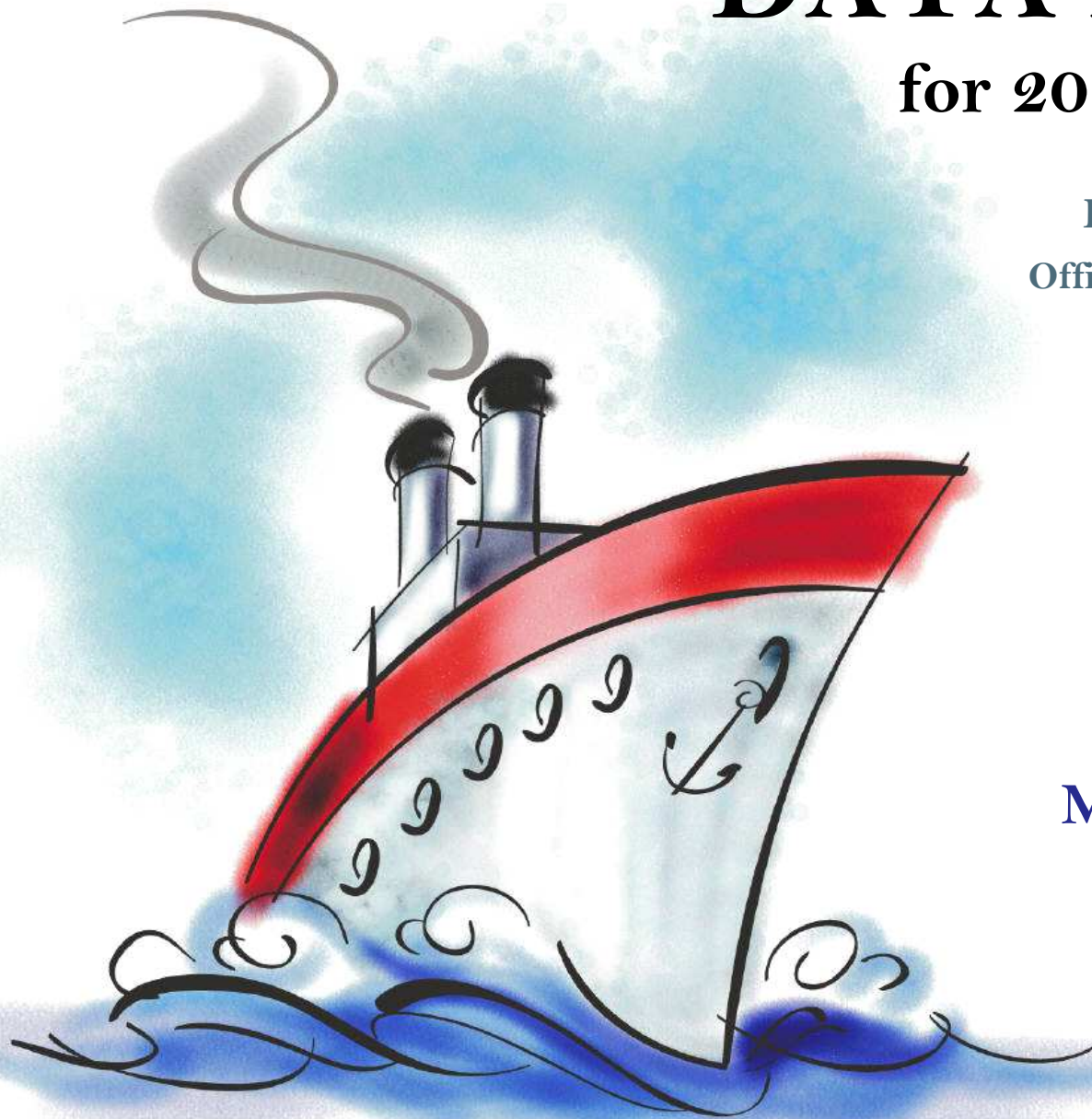
for 2014-15 planning

Evaluation & Assessment
Office of Institutional Research
<http://mydata.dallasisd.org>
OIR@dallasisd.org

September 5, 2014

School Number 45

**E.B. COMSTOCK
MIDDLE SCHOOL**



Dallas Independent School District

2. Contents Table of Contents

STUDENTS AND STAFF

- 5. Summary Summary of Student and Teacher Statistics
- 7. Enroll (2) Enrollment Statistics by Select Student Group
- 9. Teachers Teacher Statistics

STAAR (English)

- 10. Reading (3-8) STAAR 3-8 Reading in English
- 18. Math (3-8) STAAR 3-8 Mathematics in English
- 26. Science (3-8) STAAR 3-8 Science in English

STAAR L

- 34. Math (3-8) STAAR L 3-8 Mathematics

STAAR M

- 42. Reading (3-8) STAAR M 3-8 Reading
- 50. Math (3-8) STAAR M 3-8 Mathematics
- 58. SS (3-8) STAAR M 3-8 Social Studies

ENGLISH PROFICIENCY

- 62. WMLS Woodcock-Muñoz Language Survey

LOCAL ASSESSMENT

- 64. ACP Assessments of Course Performance

3. Notes Notes and Data Descriptions

- 6. Enroll (1) Enrollment Statistics by Ethnicity
- 8. Attendance Student Attendance Statistics

- 14. Writing (3-8) STAAR 3-8 Writing in English
- 22. Math (EOC) STAAR EOC Mathematics
- 30. SS (3-8) STAAR 3-8 Social Studies in English

38. Science (3-8) STAAR L 3-8 Science

- 46. Writing (3-8) STAAR M 3-8 Writing
- 54. Science (3-8) STAAR M 3-8 Science

63. TELPAS Texas English Language Proficiency Assessment System

2013-14 SCHOOL SUMMARY

- Student percentages are computed as the percentage of total student enrollment.
- Additional statistics are available in ENROLLMENT and TEACHER reports.
- Race/ethnic categories are based on the newest federal standards for ethnicity and race reporting, though some categories have been combined because of small group sizes. Students reporting their ethnicity as “Hispanic” are not counted in any race category.
- “Economically disadvantaged” students are those who qualify for free or reduced-price lunch through the federal government's program.
- Teacher demographics and assignments are from the district's Public Education Information Management System (PEIMS) submission to the TEA.

ENROLLMENT

- Statistics are based on the school's enrollment at the end of the fifth six-weeks grading period.
- “Economically disadvantaged” students are those receiving free or reduced-price lunches.
- “New” students were new to the district in 2013-14. They are counted as new if not enrolled in a district campus before the last day of the 2012-13 school year.
- The “retention rate” is the percentage of students in the same grade at the end of the fifth six-weeks grading period for both 2012-13 and 2013-14.

ATTENDANCE

- Statistics are based on student attendance through the end of the sixth six-weeks grading period (the end of the school year).
- “Average daily membership” is the total number of school days students were ENROLLED divided by the number of school days in the year.
- The “average daily attendance” number (N) is the total number of school days students were IN ATTENDANCE divided by the number of school days in the year. The “average daily attendance” percentage (%) is the average attendance rate. For each student, the number of days attended is divided by the number of days enrolled. This rate is then averaged across students.
- The number (N) of “yearly transactions” is the total number of transfer and withdrawal transactions in the school year. The percentage (%) is the number of transactions divided by “average daily membership,” which gives (on average) the percentage of the membership associated with a transaction.
- “Continuously enrolled” students are enrolled and in attendance for a minimum number of instructional days in at least one course at the school between the beginning of the school year and the first day of the main STAAR testing period. The minimum number varies depending on the school year's calendar, but is typically around 130 days.
- The “stability rate” is the number of continuously enrolled students divided by “average daily membership.”

TEACHERS

- Teacher demographics and assignments are from the district's Public Education Information Management System (PEIMS) submission to the TEA.
- Teacher absences counted towards the average DO NOT include vacation days (coded as VAC in personnel database).
- Retention rate for a school year is computed with numerator “# of teachers assigned to the school both that year and the year prior” and denominator “# of teachers assigned to the school for the prior year.” That is, the retention rate is the percentage of the prior year's teachers who continued at the school.

STAAR, STAAR L, and STAAR M

- Cells marked with an asterisk (*) indicate five or fewer students were tested. Blank cells indicate no students were tested.
- Student group assignments are from the district's Public Education Information Management System (PEIMS) submission to the TEA.
- STAAR statistics are based on results from standard STAAR only. STAAR L and STAAR M statistics are computed separately, following TEA reporting practice.
- “Percentage Satisfactory” is the percentage of students achieving Level 2 (Satisfactory) or Level 3 (Advanced).
- Statistics by reporting category are averages for all students (across student groups and genders).
- An “average percentage correct” is computed as follows: for each student, divide the number of items correctly answered by the total number of items in the test section, then average the resulting percentages across all students. For short answers on EOC English tests, an “average rating” is presented; STAAR EOC short answers are rated on a scale of 0 to 3. For written compositions on writing tests, “average score points” is presented. Additional details provided in report footnotes.
- Reading and mathematics statistics for SSI grades 5 and 8 are based on scores cumulative through the second administration.

TELPAS

- Students are counted as having tested if any one of the four domains is rated. Because a TELPAS composite rating is not assigned to a student unless all four domains are rated, the number of TELPAS composite ratings may be smaller than the number tested.
- If a student's composite rating did not increase at least one level from 2013 to 2014, the TEA did not report the 2013 composite rating.
- If a student is rated as advanced high in 2014, the TEA does not differentiate between the advanced and advanced high levels from 2013.

ACP

- Cells marked with an asterisk (*) indicate five or fewer students were tested. Blank cells indicate no students were tested.
- The ACPs are semester exams administered in grades K-12. Not all courses have ACPs. In MIDDLE and HIGH school, ACP results account for a portion of students' final semester grades (10% and 15% respectively). “Average course mark (no ACP)” is computed from semester grades before factoring in ACP scores. In ELEMENTARY school, ACP results account for 5% of students' semester grades for core courses; course-grade statistics are not reported in data packets for elementary grades.
- Raw scores on the ACPs (percentage of items correct) are scaled each year to maintain similar annual passing rates for the district.
- A scale score of at least 70 percent is required to pass an ACP. A course mark of at least 70 percent is required to pass a course.
- Statistics are computed separately for Semester 1 and Semester 2 tests; time of administration during the school year is not relevant. Results from tests written for different school years are not combined.

STUDENT ENROLLMENT

Grade	Enrollment
6	306
7	306
8	288
ALL	900

STUDENT AND TEACHER RACE/ETHNICITY

Ethnicity/Race	Students		Teachers	
	Number	Percent	Number	Percent
Black/African American	269	29.9	36	72.0
American Indian/Alaska Native	2	0.2	*	*
Asian/Hawaiian/Pacific Islander	0	0.0	*	*
Hispanic	624	69.3	2	4.0
White	2	0.2	7	14.0
Multiple	3	0.3	2	4.0
Other* (teachers only)	—	—	3	6.0
Not reported (students only)	0	0.0	—	—

*For teachers, "Other" category includes American Indian/Alaska Native and Asian/Hawaiian/Pacific Islander.

SELECT STUDENT GROUP ENROLLMENT

Group	Number	Percent
At-Risk	807	89.7
Economically disadvantaged	860	95.6
Limited English proficient (LEP)	353	39.2
Special education	105	11.7
Talented and Gifted (TAG)	92	10.2

Grade	Year	Enrollment	African American		American Indian		Asian		Hispanic		White		Multiple category	
			N	%	N	%	N	%	N	%	N	%	N	%
6	2012													
	2013	316	99	31.3	2	0.6	0	0.0	214	67.7	1	0.3	0	0.0
	2014	306	101	33.0	0	0.0	0	0.0	203	66.3	1	0.3	1	0.3
7	2012	555	126	22.7	1	0.2	0	0.0	414	74.6	13	2.3	1	0.2
	2013	271	83	30.6	0	0.0	0	0.0	187	69.0	0	0.0	1	0.4
	2014	306	87	28.4	1	0.3	0	0.0	217	70.9	1	0.3	0	0.0
8	2012	600	133	22.2	3	0.5	0	0.0	449	74.8	13	2.2	2	0.3
	2013	253	62	24.5	1	0.4	0	0.0	187	73.9	2	0.8	1	0.4
	2014	288	81	28.1	1	0.3	0	0.0	204	70.8	0	0.0	2	0.7
6-8	2012	1,155	259	22.4	4	0.3	0	0.0	863	74.7	26	2.3	3	0.3
	2013	840	244	29.0	3	0.4	0	0.0	588	70.0	3	0.4	2	0.2
	2014	900	269	29.9	2	0.2	0	0.0	624	69.3	2	0.2	3	0.3

Grade	Year	Enrollment	Economically Disadvantaged		LEP		Special Education		At Risk		TAG		New (to District)		Gender		Retention Rate (%)
			N	%	N	%	N	%	N	%	N	%	N	%	% Male	% Female	
6	2012																
	2013	316	308	97.5	124	39.2	41	13.0	270	85.4	40	12.7	23	7.3	58.2	41.8	0.3
	2014	306	294	96.1	135	44.1	38	12.4	270	88.2	41	13.4	24	7.8	48.0	52.0	3.3
7	2012	555	538	96.9	233	42.0	64	11.5	429	77.3	21	3.8	54	9.7	55.3	44.7	0.9
	2013	271	267	98.5	79	29.2	28	10.3	220	81.2	28	10.3	24	8.9	55.0	45.0	3.3
	2014	306	292	95.4	130	42.5	39	12.7	279	91.2	23	7.5	22	7.2	56.9	43.1	1.6
8	2012	600	571	95.2	197	32.8	53	8.8	436	72.7	60	10.0	40	6.7	50.8	49.2	1.8
	2013	253	241	95.3	85	33.6	27	10.7	206	81.4	26	10.3	13	5.1	54.5	45.5	1.2
	2014	288	274	95.1	88	30.6	28	9.7	258	89.6	28	9.7	21	7.3	54.2	45.8	5.6
6-8	2012	1,155	1,109	96.0	430	37.2	117	10.1	865	74.9	81	7.0	94	8.1	53.0	47.0	1.4
	2013	840	816	97.1	288	34.3	96	11.4	696	82.9	94	11.2	60	7.1	56.1	43.9	1.5
	2014	900	860	95.6	353	39.2	105	11.7	807	89.7	92	10.2	67	7.4	53.0	47.0	3.4

Grade	Year	Average Daily Membership		Average Daily Attendance				Yearly Transactions			Continuously Enrolled		Stability Rate	
		N	District	N	%	District N	District %	N	%	District %	N	District	%	District
6	2012		10,683			10,315	96.6			17.6		9,420		88.2
	2013	315	11,463	303	96.1	11,062	96.5	78	24.8	21.1	276	10,320	87.6	90.0
	2014	316	10,808	304	96.4	10,413	96.3	73	23.1	20.0	269	9,554	85.3	88.4
7	2012	561	10,204	527	93.9	9,727	95.3	111	19.8	23.8	437	8,576	77.9	84.0
	2013	265	10,542	254	95.8	10,116	96.0	77	29.0	24.5	239	9,357	90.1	88.8
	2014	299	11,195	284	94.9	10,729	95.8	81	27.1	22.1	250	9,852	83.5	88.0
8	2012	588	10,369	555	94.4	9,838	94.9	68	11.6	15.5	494	8,711	83.9	84.0
	2013	259	9,955	245	94.4	9,486	95.3	68	26.2	17.6	209	8,664	80.6	87.0
	2014	287	10,449	272	94.7	9,970	95.4	52	18.1	13.1	234	9,097	81.5	87.1
6-8	2012	1,149	31,256	1,082	94.2	29,880	95.6	179	15.6	18.9	931	26,707	81.0	85.4
	2013	840	31,960	802	95.5	30,665	96.0	223	26.6	21.1	724	28,341	86.2	88.7
	2014	902	32,451	860	95.3	31,112	95.9	206	22.8	18.5	753	28,503	83.5	87.8

Teachers: 50

DISTRIBUTIONS

Ethnicity/Race	Number	Percentage
African American	36	72.0
Hispanic	2	4.0
White	7	14.0
Multiple	2	4.0
Other	3	6.0

Gender	Number	Percentage
Female	27	54.0
Male	23	46.0

ATTENDANCE / RETENTION

	Average Absences	Retention Rate
2011-12	7.2	—
2012-13	12.7	50.0
2013-14	7.8	63.6

YEARS EXPERIENCE

Years	Number	Percentage
Beginning (0)	12	24.0
1	1	2.0
2	1	2.0
3	3	6.0
4	2	4.0
5	4	8.0
1-3	5	10.0
More than 3	33	66.0
1 - 5	11	22.0
6 - 10	10	20.0
11 - 20	10	20.0
More than 20	7	14.0

PERCENTAGE SATISFACTORY (Levels 2 or 3)

Grade	Year	White	African Amer	Hispanic	Econ Disadv	Special Educ	LEP	At Risk	Migrant	Male	Female	All	District	Number Tested (All Students)
6	2012												63.5	0
	2013		37.7	52.0	46.3	*	45.8	38.5		49.7	45.2	47.7	57.7	279
	2014	*	48.8	69.8	65.5	0.0	66.4	58.5	*	58.0	68.8	63.6	63.1	275
7	2012	50.0	53.8	61.5	59.7	27.3	48.4	46.7		56.7	62.8	59.4	67.5	493
	2013		56.7	62.1	60.0		59.8	49.0	*	64.1	56.5	60.6	67.3	236
	2014		43.3	59.6	52.1		52.2	46.8		60.4	48.7	55.2	60.5	261
8	2012	75.0	66.4	70.7	70.1	30.8	55.9	56.6		66.1	73.5	69.8	71.3	549
	2013	*	66.7	83.4	79.1	*	73.8	72.4	*	80.2	79.4	79.8	82.7	233
	2014	*	79.1	78.5	80.4		63.3	73.1		75.5	83.2	79.1	81.5	258
6-8	2012	66.7	60.3	66.4	65.1	29.2	52.0	52.0		61.4	68.7	64.9	67.4	1,042
	2013	*	51.8	65.2	60.7	*	57.4	52.2	*	63.6	59.6	61.8	68.6	748
	2014	*	56.5	69.2	66.2	0.0	60.6	59.2	*	64.7	67.1	65.9	68.2	794

NUMBER TESTED IN GRADES 6-8													
2012	18	219	791	975	24	369	641		544	498	1,042	29,211	
2013	1	191	549	718	5	343	492	2	409	339	748	29,692	
2014	2	214	571	702	9	320	601	1	414	380	794	30,015	

NUMBER UNSATISFACTORY (Level 1)

Grade	Year	White	African Amer	Hispanic	Econ Disadv	Special Educ	LEP	At Risk	Migrant	Male	Female	All	District	Number Tested (All Students)
6	2012												3,673	0
	2013		48	96	144	*	77	115		78	68	146	4,523	279
	2014	*	41	58	88	9	43	85	*	55	45	100	3,679	275
7	2012	3	49	144	187	8	99	161		117	83	200	3,070	493
	2013		26	66	92		47	78	*	46	47	93	3,215	236
	2014		38	78	104		54	108		57	60	117	4,075	261
8	2012	3	38	122	153	9	78	147		93	73	166	2,786	549
	2013	*	18	29	46	*	22	42	*	25	22	47	1,586	233
	2014	*	14	40	45		29	52		34	20	54	1,797	258
6-8	2012	6	87	266	340	17	177	308		210	156	366	9,529	1,042
	2013	*	92	191	282	*	146	235	*	149	137	286	9,324	748
	2014	*	93	176	237	9	126	245	*	146	125	271	9,551	794

NUMBER TESTED IN GRADES 6-8													
2012	18	219	791	975	24	369	641			544	498	1,042	29,211
2013	1	191	549	718	5	343	492	2		409	339	748	29,692
2014	2	214	571	702	9	320	601	1		414	380	794	30,015

PERCENTAGE ADVANCED (Level 3)

Grade	Year	White	African Amer	Hispanic	Econ Disadv	Special Educ	LEP	At Risk	Migrant	Male	Female	All	District	Number Tested (All Students)
6	2012												8.3	0
	2013		1.3	7.0	5.6	*	4.9	3.2		6.5	4.0	5.4	11.3	279
	2014	*	1.3	2.1	1.6	0.0	2.3	1.5	*	1.5	2.1	1.8	7.1	275
7	2012	16.7	1.9	3.5	3.2	0.0	1.0	2.0		3.3	3.1	3.2	10.3	493
	2013		1.7	2.9	2.6		0.9	0.0	*	2.3	2.8	2.5	8.7	236
	2014		0.0	5.7	4.1		0.0	0.5		5.6	2.6	4.2	10.0	261
8	2012	0.0	2.7	5.5	5.1	0.0	1.7	2.1		5.5	4.0	4.7	9.9	549
	2013	*	3.7	11.4	9.1	*	6.0	4.6	*	7.9	11.2	9.4	15.5	233
	2014	*	6.0	4.3	4.8		0.0	0.5		4.3	5.0	4.7	13.1	258
6-8	2012	5.6	2.3	4.6	4.2	0.0	1.4	2.0		4.4	3.6	4.0	9.5	1,042
	2013	*	2.1	7.1	5.7	*	3.8	2.6	*	5.6	5.9	5.7	11.7	748
	2014	*	2.3	4.0	3.4	0.0	0.9	0.8	*	3.9	3.2	3.5	10.1	794

NUMBER TESTED IN GRADE 6-8													
2012	18	219	791	975	24	369	641		544	498	1,042	29,211	
2013	1	191	549	718	5	343	492	2	409	339	748	29,692	
2014	2	214	571	702	9	320	601	1	414	380	794	30,015	

AVERAGE PERCENTAGE OF ITEMS CORRECT BY REPORTING CATEGORY

Grade	Year	REPORTING CATEGORY		
		1. Understanding Across Genres (GR 3-5) 1. Understanding/Analysis Across Genres (GR 6-8)	2. Understanding/Analysis of Literary Texts	3. Understanding/Analysis of Informational Texts
6	2012			
	2013	60.5	55.4	54.0
	2014	59.1	56.8	56.8
7	2012	61.4	54.6	56.1
	2013	53.9	52.1	63.4
	2014	58.7	53.6	52.5
8	2012	64.0	58.2	59.5
	2013	69.3	67.1	60.7
	2014	62.5	58.8	59.1
6-8	2012	62.8	56.5	57.9
	2013	61.1	58.0	59.0
	2014	60.1	56.4	56.1

PERCENTAGE SATISFACTORY (Levels 2 or 3)

Grade	Year	White	African Amer	Hispanic	Econ Disadv	Special Educ	LEP	At Risk	Migrant	Male	Female	All	District	Number Tested (All Students)
7	2012	42.9	44.4	48.9	47.9	22.2	33.7	31.7		38.0	58.2	47.1	59.2	499
	2013		50.8	47.4	48.2	*	39.3	38.2	*	40.5	57.0	48.1	57.1	233
	2014		33.3	46.7	44.4		31.6	32.7		44.1	41.9	43.1	54.6	262

NUMBER TESTED IN GRADE 7													
2012	7	108	376	470	9	190	303		274	225	499	9,456	
2013		61	171	228	2	117	152	1	126	107	233	9,785	
2014		66	195	216		114	202		145	117	262	10,339	

NUMBER UNSATISFACTORY (Level 1)

Grade	Year	White	African Amer	Hispanic	Econ Disadv	Special Educ	LEP	At Risk	Migrant	Male	Female	All	District	Number Tested (All Students)
7	2012	4	60	192	245	7	126	207		170	94	264	3,859	499
	2013		30	90	118	*	71	94	*	75	46	121	4,198	233
	2014		44	104	120		78	136		81	68	149	4,690	262

NUMBER TESTED IN GRADE 7													
2012	7	108	376	470	9	190	303		274	225	499	9,456	
2013		61	171	228	2	117	152	1	126	107	233	9,785	
2014		66	195	216		114	202		145	117	262	10,339	

PERCENTAGE ADVANCED (Level 3)

Grade	Year	White	African Amer	Hispanic	Econ Disadv	Special Educ	LEP	At Risk	Migrant	Male	Female	All	District	Number Tested (All Students)
7	2012	0.0	0.0	0.0	0.0	0.0	0.0	0.0		0.0	0.0	0.0	3.4	499
	2013		0.0	0.0	0.0	*	0.0	0.0	*	0.0	0.0	0.0	1.5	233
	2014		0.0	0.0	0.0		0.0	0.0		0.0	0.0	0.0	3.0	262

NUMBER TESTED IN GRADE 7													
2012	7	108	376	470	9	190	303		274	225	499	9,456	
2013		61	171	228	2	117	152	1	126	107	233	9,785	
2014		66	195	216		114	202		145	117	262	10,339	

AVERAGE PERCENTAGE OF ITEMS CORRECT BY REPORTING CATEGORY

Grade	Year	REPORTING CATEGORY			
		1. Composition ¹ GR 4: Personal Narrative GR 7: Expository	1. Composition ¹ GR 4: Expository GR 7: Personal Narrative	2. Revision	3. Editing
7	2012	1.7	2.1	61.8	52.7
	2013	3.9	4.5	56.9	52.6
	2014	3.5	4.5	54.3	48.6

¹Average score points (range 0-8). A STAAR composition is rated twice on a scale of 1 to 4, and the ratings are summed to determine score points for the composition. Score point scale: 0=Non-scorable; 2=Very Limited; 3=between Very Limited and Basic; 4=Basic; 5=between Basic and Satisfactory; 6=Satisfactory; 7=between Satisfactory and Accomplished; 8=Accomplished

PERCENTAGE SATISFACTORY (Levels 2 or 3)

Grade	Year	White	African Amer	Hispanic	Econ Disadv	Special Educ	LEP	At Risk	Migrant	Male	Female	All	District	Number Tested (All Students)
6	2012												66.4	0
	2013		32.5	57.5	50.4	*	53.3	45.0		50.7	50.0	50.4	60.6	272
	2014	*	43.8	70.5	63.2	33.3	68.3	58.1	*	58.1	66.7	62.6	64.3	273
7	2012	87.5	47.1	63.9	61.2	41.7	55.7	50.0		61.8	59.1	60.6	59.9	487
	2013		55.0	60.4	58.2		60.7	48.6	*	62.1	56.1	59.3	59.9	231
	2014		37.3	60.3	53.1		55.0	45.7		54.5	53.5	54.1	55.1	257
8	2012	77.8	41.8	51.8	50.0	11.1	47.2	41.1		50.0	50.0	50.0	51.9	410
	2013	*	51.1	81.7	74.5	*	80.5	67.2	*	77.3	71.3	74.5	74.0	204
	2014	*	65.6	78.0	76.8		76.7	70.8		73.8	75.9	74.8	73.2	238
6-8	2012	82.4	44.6	58.5	56.1	28.6	52.0	45.6		56.5	54.8	55.7	60.3	897
	2013	*	44.6	65.6	59.8	*	62.3	52.7	*	62.0	58.2	60.3	63.7	707
	2014	*	48.1	69.4	64.3	33.3	65.6	57.9	*	61.9	65.3	63.5	63.3	768

NUMBER TESTED IN GRADES 6-8													
2012	17	202	667	841	21	329	465			483	414	897	26,044
2013	1	184	515	677	5	324	465	2		384	323	707	26,676
2014	2	208	552	677	9	308	587	1		402	366	768	27,304

NUMBER UNSATISFACTORY (Level 1)

Grade	Year	White	African Amer	Hispanic	Econ Disadv	Special Educ	LEP	At Risk	Migrant	Male	Female	All	District	Number Tested (All Students)
6	2012							0					3,327	0
	2013		52	82	129	*	63	99		74	61	135	4,133	272
	2014	*	45	56	93	6	40	85	*	54	48	102	3,478	273
7	2012	1	55	133	178	7	82	149		102	90	192	3,705	487
	2013		27	67	94		44	76	*	47	47	94	3,851	231
	2014		42	75	100		49	108		65	53	118	4,536	257
8	2012	2	57	144	191	8	76	169		108	97	205	3,319	410
	2013	*	23	28	49	*	15	45	*	25	27	52	1,709	204
	2014	*	21	38	49		17	54		34	26	60	2,001	238
6-8	2012	3	112	277	369	15	158	318		210	187	397	10,351	897
	2013	*	102	177	272	*	122	220	*	146	135	281	9,693	707
	2014	*	108	169	242	6	106	247	*	153	127	280	10,015	768

NUMBER TESTED IN GRADES 6-8													
2012	17	202	667	841	21	329	465			483	414	897	26,044
2013	1	184	515	677	5	324	465	2		384	323	707	26,676
2014	2	208	552	677	9	308	587	1		402	366	768	27,304

PERCENTAGE ADVANCED (Level 3)

Grade	Year	White	African Amer	Hispanic	Econ Disadv	Special Educ	LEP	At Risk	Migrant	Male	Female	All	District	Number Tested (All Students)
6	2012												9.8	0
	2013		0.0	3.6	2.7	*	2.2	1.1		4.0	0.8	2.6	8.5	272
	2014	*	0.0	4.7	3.6	0.0	4.0	2.5	*	2.3	4.2	3.3	9.6	273
7	2012	0.0	0.0	2.4	1.7	0.0	1.1	0.3		3.0	0.5	1.8	6.3	487
	2013		1.7	1.2	1.3		0.0	0.0	*	2.4	0.0	1.3	4.8	231
	2014		0.0	5.3	4.2		4.6	2.5		4.2	3.5	3.9	6.7	257
8	2012	0.0	0.0	0.0	0.3	0.0	0.0	0.0		0.5	0.0	0.2	0.4	410
	2013	*	0.0	0.7	0.5	*	1.3	0.7	*	0.9	0.0	0.5	0.9	204
	2014	*	0.0	1.7	1.4		0.0	0.0		1.5	0.9	1.3	1.0	238
6-8	2012	0.0	0.0	1.3	1.1	0.0	0.6	0.2		1.9	0.2	1.1	6.1	897
	2013	*	0.5	1.9	1.6	*	1.2	0.6	*	2.6	0.3	1.6	5.3	707
	2014	*	0.0	4.0	3.1	0.0	3.2	1.7	*	2.7	3.0	2.9	6.2	768

NUMBER TESTED IN GRADE 6-8													
2012	17	202	667	841	21	329	585			483	414	897	26,044
2013	1	184	515	677	5	324	465	2		384	323	707	26,676
2014	2	208	552	677	9	308	587	1		402	366	768	27,304

AVERAGE PERCENTAGE OF ITEMS CORRECT BY REPORTING CATEGORY

Grade	Year	REPORTING CATEGORY				
		1. Numbers, Operations, and Quantitative Reasoning	2. Patterns, Relationships, and Algebraic Reasoning	3. Geometry and Spatial Reasoning	4. Measurement	5. Probability and Statistics
6	2012					
	2013	48.6	49.7	44.2	36.7	42.0
	2014	52.5	49.6	49.9	48.0	52.4
7	2012	49.4	50.5	52.7	41.5	45.2
	2013	45.8	55.4	50.5	39.4	40.6
	2014	55.1	48.6	48.0	41.5	49.0
8	2012	46.7	42.5	36.1	36.6	38.6
	2013	52.4	55.8	43.1	43.4	42.8
	2014	46.5	48.7	42.4	41.9	55.4
6-8	2012	48.2	46.8	45.1	39.3	42.2
	2013	48.8	53.3	45.9	39.5	41.8
	2014	51.5	49.0	46.9	43.9	52.2

PERCENTAGE SATISFACTORY (Levels 2 or 3)

Test	Year	White	African Amer	Hispanic	Econ Disadv	Special Educ	LEP	At Risk	Migrant	Male	Female	All	District
ALGEBRA I (GRADE 8)	2012	*	86.7	86.5	86.2	*	80.0	82.6		84.9	87.2	86.3	94.1
	2013		*	95.0	95.2		*	87.5		100.0	90.9	95.5	95.4
	2014		100.0	100.0	100.0		*	*		100.0	100.0	100.0	97.2
Tests Taken	2012	3	15	111	123	2	30	8		53	78	131	2,554
	2013		2	20	21		5	8		11	11	22	2,474
	2014		6	9	14		1	3		9	7	16	2,117

NUMBER UNSATISFACTORY (Level 1)

Test	Year	White	African Amer	Hispanic	Econ Disadv	Special Educ	LEP	At Risk	Migrant	Male	Female	All	District
ALGEBRA I (GRADE 8)	2012	*	2	15	17	*	6	8		8	10	18	151
	2013		*	1	1		*	1		0	1	1	115
	2014		0	0	0		*	*		0	0	0	60
Tests Taken	2012	3	15	111	123	2	30	8		53	78	131	2,554
	2013		2	20	21		5	8		11	11	22	2,474
	2014		6	9	14		1	3		9	7	16	2,117

PERCENTAGE ADVANCED (Level 3)

Test	Year	White	African Amer	Hispanic	Econ Disadv	Special Educ	LEP	At Risk	Migrant	Male	Female	All	District
ALGEBRA I (GRADE 8)	2012	*	0.0	3.6	3.3	*	3.3	2.2		1.9	3.8	3.1	19.0
	2013		*	5.0	0.0		*	0.0		9.1	0.0	4.5	24.2
	2014		0.0	11.1	7.1		*	*		11.1	0.0	6.3	28.8
Tests Taken	2012	3	15	111	123	2	30	46		53	78	131	2,554
	2013		2	20	21		5	8		11	11	22	2,474
	2014		6	9	14		1	3		9	7	16	2,117

AVERAGE PERCENTAGE OF ITEMS CORRECT BY REPORTING CATEGORY

ALGEBRA I (GRADE 8)	1. Functional Relationships	2. Properties and Attributes of Functions	3. Linear Functions	4. Linear Equations and Inequalities	5. Quadratic and Other Nonlinear Functions
2012	58.9	50.3	52.1	48.7	46.4
2013	72.2	55.7	76.7	61.8	46.0
2014	66.4	64.6	62.1	60.0	55.6

PERCENTAGE SATISFACTORY (Levels 2 or 3)

Grade	Year	White	African Amer	Hispanic	Econ Disadv	Special Educ	LEP	At Risk	Migrant	Male	Female	All	District	Number Tested (All Students)
8	2012	58.3	37.4	48.4	46.5	23.5	35.6	34.6		49.6	43.8	46.6	54.0	551
	2013	*	49.0	63.8	59.8	*	60.2	50.7	*	65.0	56.3	61.1	65.8	226
	2014		36.8	42.5	40.9	*	31.5	28.6		43.5	38.6	41.3	61.9	252

NUMBER TESTED IN GRADE 8													
2012	12	115	419	512	17	174	338		270	281	551	9,431	
2013	1	49	174	214	2	83	146	1	123	103	226	8,998	
2014		68	181	208	1	73	189		138	114	252	9,466	

NUMBER UNSATISFACTORY (Level 1)

Grade	Year	White	African Amer	Hispanic	Econ Disadv	Special Educ	LEP	At Risk	Migrant	Male	Female	All	District	Number Tested (All Students)
8	2012	5	72	216	274	13	112	221		136	158	294	4335	551
	2013	*	25	63	86	*	33	72	*	43	45	88	3074	226
	2014		43	104	123	*	50	135		78	70	148	3605	252

NUMBER TESTED IN GRADE 8													
2012	12	115	419	512	17	174	338		270	281	551	9,431	
2013	1	49	174	214	2	83	146	1	123	103	226	8,998	
2014		68	181	208	1	73	189		138	114	252	9,466	

PERCENTAGE ADVANCED (Level 3)

Grade	Year	White	African Amer	Hispanic	Econ Disadv	Special Educ	LEP	At Risk	Migrant	Male	Female	All	District	Number Tested (All Students)
8	2012	0.0	0.0	3.1	2.5	0.0	2.3	1.8		4.1	0.7	2.4	4.2	551
	2013	*	0.0	2.9	1.9	*	2.4	1.4	*	3.3	1.0	2.2	7.1	226
	2014		1.5	2.2	1.9	*	0.0	0.5		3.6	0.0	2.0	11.3	252

NUMBER TESTED IN GRADE 8													
2012	12	115	419	512	17	174	338		270	281	551	9,431	
2013	1	49	174	214	2	83	146	1	123	103	226	8,998	
2014		68	181	208	1	73	189		138	114	252	9,466	

AVERAGE PERCENTAGE OF ITEMS CORRECT BY REPORTING CATEGORY

Grade	Year	REPORTING CATEGORY			
		1. Matter and Energy	2. Force, Motion, and Energy	3. Earth and Space	4. Organisms and Environments
8	2012	51.3	52.7	51.1	53.4
	2013	59.2	55.5	51.3	55.8
	2014	45.5	49.7	48.1	59.6

PERCENTAGE SATISFACTORY (Levels 2 or 3)

Grade	Year	White	African Amer	Hispanic	Econ Disadv	Special Educ	LEP	At Risk	Migrant	Male	Female	All	District	Number Tested (All Students)
8	2012	58.3	37.1	41.7	42.0	17.6	24.7	26.5		45.4	36.9	41.1	52.5	550
	2013	*	75.5	81.3	79.6	*	80.7	73.6	*	81.5	78.8	80.3	59.3	228
	2014		51.5	37.4	39.7	*	20.3	27.9		43.2	38.6	41.1	53.5	253

NUMBER TESTED IN GRADE 8													
2012	12	116	417	512	17	174	336		271	279	550	9,392	
2013	1	49	176	216	2	83	148	1	124	104	228	8,991	
2014		68	182	209	1	74	190		139	114	253	9,464	

NUMBER UNSATISFACTORY (Level 1)

Grade	Year	White	African Amer	Hispanic	Econ Disadv	Special Educ	LEP	At Risk	Migrant	Male	Female	All	District	Number Tested (All Students)
8	2012	5	73	243	297	14	131	247		148	176	324	4462	550
	2013	*	12	33	44	*	16	39	*	23	22	45	3656	228
	2014		33	114	126	*	59	137		79	70	149	4402	253

NUMBER TESTED IN GRADE8													
2012	12	116	417	512	17	174	336		271	279	550	9,392	
2013	1	49	176	216	2	83	148	1	124	104	228	8,991	
2014		68	182	209	1	74	190		139	114	253	9,464	

PERCENTAGE ADVANCED (Level 3)

Grade	Year	White	African Amer	Hispanic	Econ Disadv	Special Educ	LEP	At Risk	Migrant	Male	Female	All	District	Number Tested (All Students)
8	2012	0.0	3.4	2.9	3.1	0.0	0.6	0.9		3.7	2.2	2.9	7.1	550
	2013	*	14.3	6.8	7.4	*	3.6	7.4	*	11.3	4.8	8.3	8.8	228
	2014		2.9	2.2	2.4	*	0.0	0.0		2.9	1.8	2.4	7.3	253

NUMBER TESTED IN GRADE 8													
2012	12	116	417	512	17	174	336		271	279	550	9,392	
2013	1	49	176	216	2	83	148	1	124	104	228	8,991	
2014		68	182	209	1	74	190		139	114	253	9,464	

AVERAGE PERCENTAGE OF ITEMS CORRECT BY REPORTING CATEGORY

Grade	Year	REPORTING CATEGORY			
		1. History	2. Geography and Culture	3. Government and Citizenship	4. Economics, Science, Technology, and Society
8	2012	45.2	48.9	44.3	42.4
	2013	63.7	69.5	55.1	48.9
	2014	48.9	41.9	45.0	49.5

PERCENTAGE SATISFACTORY (Levels 2 or 3)

Grade	Year	White	African Amer	Hispanic	Econ Disadv	Special Educ	LEP	At Risk	Migrant	Male	Female	All	District	Number Tested (All Students)
6	2012												22.8	0
	2013			28.6	28.6		28.6	*		33.3	*	28.6	30.6	7
	2014			*	*		*	*		*		*	29.0	2
7	2012			10.0	11.1		10.0	*		*	*	10.0	16.9	10
	2013			*	*		*	*		*	*	*	24.3	5
	2014			*	*		*	*		*	*	*	24.8	5
8	2012			*	*		*	*		*	*	*	0.0	4
	2013			*	*		*	*			*	*	25.5	1
	2014			*	*		*	*			*	*	33.2	5
6-8	2012			7.7	8.3		7.1	12.5		0.0	16.7	7.1	12.7	14
	2013			15.4	15.4		15.4	18.2		20.0	*	15.4	26.8	13
	2014			58.3	58.3		58.3	58.3		*	62.5	58.3	29.1	12

NUMBER TESTED IN GRADES 6-8													
2012			13	12			14	8		8	6	14	620
2013			13	13			13	11		10	3	13	634
2014			12	12			12	12		4	8	12	722

NUMBER UNSATISFACTORY (Level 1)

Grade	Year	White	African Amer	Hispanic	Econ Disadv	Special Educ	LEP	At Risk	Migrant	Male	Female	All	District	Number Tested (All Students)
6	2012												146	0
	2013			5	5		5	*		4	*	5	150	7
	2014			*	*		*	*		*		*	171	2
7	2012			9	8		9	*		*	*	9	177	10
	2013			*	*		*	*		*	*	*	162	5
	2014			*	*		*	*		*	*	*	176	5
8	2012			*	*		*	*		*	*	*	218	4
	2013			*	*		*	*			*	*	152	1
	2014			*	*		*	*			*	*	165	5
6-8	2012			12	11		13	7		8	5	13	541	14
	2013			11	11		11	9		8	*	11	464	13
	2014			5	5		5	5		*	3	5	512	12

NUMBER TESTED IN GRADES 6-8													
2012			13	12			14	8		8	6	14	620
2013			13	13			13	11		10	3	13	634
2014			12	12			12	12		4	8	12	722

PERCENTAGE ADVANCED (Level 3)

Grade	Year	White	African Amer	Hispanic	Econ Disadv	Special Educ	LEP	At Risk	Migrant	Male	Female	All	District	Number Tested (All Students)
6	2012												1.1	0
	2013			0.0	0.0		0.0	*		0.0	*	0.0	2.3	7
	2014			*	*		*	*		*		*	3.3	2
7	2012			0.0	0.0		0.0	*		*	*	0.0	0.0	10
	2013			*	*		*	*		*	*	*	0.9	5
	2014			*	*		*	*		*	*	*	0.0	5
8	2012			*	*		*	*		*	*	*	0.0	4
	2013			*	*		*	*			*	*	0.0	1
	2014			*	*		*	*			*	*	0.4	5
6-8	2012			0.0	0.0		0.0	0.0		0.0	0.0	0.0	0.3	14
	2013			0.0	0.0		0.0	0.0		0.0	*	0.0	1.1	13
	2014			0.0	0.0		0.0	0.0		*	0.0	0.0	1.2	12

NUMBER TESTED IN GRADE 6-8													
2012			13	12			14	8		8	6	14	620
2013			13	13			13	11		10	3	13	634
2014			12	12			12	12		4	8	12	722

AVERAGE PERCENTAGE OF ITEMS CORRECT BY REPORTING CATEGORY

Grade	Year	REPORTING CATEGORY				
		1. Numbers, Operations, and Quantitative Reasoning	2. Patterns, Relationships, and Algebraic Reasoning	3. Geometry and Spatial Reasoning	4. Measurement	5. Probability and Statistics
6	2012					
	2013	32.1	36.9	33.9	33.9	33.9
	2014	*	*	*	*	*
7	2012	34.6	35.4	33.0	30.0	40.0
	2013	*	*	*	*	*
	2014	*	*	*	*	*
8	2012	*	*	*	*	*
	2013	*	*	*	*	*
	2014	*	*	*	*	*
6-8	2012	39.0	38.0	30.7	29.1	33.6
	2013	27.0	32.2	37.9	30.0	27.5
	2014	42.9	48.3	32.1	41.9	36.5

PERCENTAGE SATISFACTORY (Levels 2 or 3)

Grade	Year	White	African Amer	Hispanic	Econ Disadv	Special Educ	LEP	At Risk	Migrant	Male	Female	All	District	Number Tested (All Students)
8	2012			*	*		*	*		*	*	*	14.2	4
	2013			*	*		*	*			*	*	13.3	1
	2014			16.7	16.7		16.7	16.7		*	*	16.7	17.0	6

NUMBER TESTED IN GRADE 8													
2012			3	4		4	3		3	1	4	226	
2013			1	1		1	1			1	1	210	
2014			6	6		6	6		1	5	6	277	

NUMBER UNSATISFACTORY (Level 1)

Grade	Year	White	African Amer	Hispanic	Econ Disadv	Special Educ	LEP	At Risk	Migrant	Male	Female	All	District	Number Tested (All Students)
8	2012			*	*		*	*		*	*	*	194	4
	2013			*	*		*	*			*	*	182	1
	2014			5	5		5	5		*	*	5	230	6

NUMBER TESTED IN GRADE 8													
2012			3	4		4	3		3	1	4	226	
2013			1	1		1	1			1	1	210	
2014			6	6		6	6		1	5	6	277	

PERCENTAGE ADVANCED (Level 3)

Grade	Year	White	African Amer	Hispanic	Econ Disadv	Special Educ	LEP	At Risk	Migrant	Male	Female	All	District	Number Tested (All Students)
8	2012			*	*		*	*		*	*	*	0.0	4
	2013			*	*		*	*			*	*	0.0	1
	2014			0.0	0.0		0.0	0.0		*	*	0.0	0.0	6

NUMBER TESTED IN GRADE 8													
2012			3	4		4	3		3	1	4	226	
2013			1	1		1	1			1	1	210	
2014			6	6		6	6		1	5	6	277	

AVERAGE PERCENTAGE OF ITEMS CORRECT BY REPORTING CATEGORY

Grade	Year	REPORTING CATEGORY			
		1. Matter and Energy	2. Force, Motion, and Energy	3. Earth and Space	4. Organisms and Environments
8	2012	*	*	*	*
	2013	*	*	*	*
	2014	38.1	55.6	52.4	47.6

PERCENTAGE SATISFACTORY (Levels 2 or 3)

Grade	Year	White	African Amer	Hispanic	Econ Disadv	Special Educ	LEP	At Risk	Migrant	Male	Female	All	District	Number Tested (All Students)
6	2012												65.5	0
	2013	*	58.8	81.8	70.0	70.0	71.4	61.9		69.6	71.4	70.0	55.9	30
	2014		62.5	55.6	56.5	60.0	71.4	55.6		62.5	55.6	60.0	51.6	25
7	2012	*	58.8	67.9	64.6	63.3	71.4	61.4		56.7	73.7	63.3	57.3	49
	2013		81.3	66.7	76.0	76.0	*	72.7		70.6	87.5	76.0	61.0	25
	2014	*	73.3	68.8	71.9	72.7	83.3	72.4		72.7	72.7	72.7	55.4	33
8	2012	*	72.2	54.5	59.0	61.9	66.7	63.2		61.5	62.5	61.9	58.0	42
	2013	*	90.0	100.0	95.7	96.2	100.0	95.8		94.1	100.0	96.2	74.5	26
	2014		100.0	87.5	95.0	95.2	*	94.4		92.3	100.0	95.2	75.0	21
6-8	2012	50.0	65.7	62.0	62.1	62.6	69.4	62.2		58.9	68.6	62.6	60.3	91
	2013	*	74.4	85.7	79.5	80.2	87.0	77.6		77.2	87.5	80.2	63.6	81
	2014	*	76.7	69.7	73.3	74.7	81.8	73.8		74.5	75.0	74.7	60.0	79

NUMBER TESTED IN GRADES 6-8													
2012	6	35	50	87	91	36	82			56	35	91	1,571
2013	2	43	35	78	81	23	67			57	24	81	1,687
2014	1	43	33	75	79	22	65			51	28	79	1,689

NUMBER UNSATISFACTORY (Level 1)

Grade	Year	White	African Amer	Hispanic	Econ Disadv	Special Educ	LEP	At Risk	Migrant	Male	Female	All	District	Number Tested (All Students)
6	2012												181	0
	2013	*	7	2	9	9	2	8		7	2	9	270	30
	2014		6	4	10	10	2	8		6	4	10	281	25
7	2012	*	7	9	17	18	6	17		13	5	18	244	49
	2013		3	3	6	6	*	6		5	1	6	202	25
	2014	*	4	5	9	9	2	8		6	3	9	266	33
8	2012	*	5	10	16	16	5	14		10	6	16	199	42
	2013	*	1	0	1	1	0	1		1	0	1	142	26
	2014		0	1	1	1	*	1		1	0	1	128	21
6-8	2012	3	12	19	33	34	11	31		23	11	34	624	91
	2013	*	11	5	16	16	3	15		13	3	16	614	81
	2014	*	10	10	20	20	4	17		13	7	20	675	79

NUMBER TESTED IN GRADES 6-8													
2012	6	35	50	87	91	36	82		56	35	91	1,571	
2013	2	43	35	78	81	23	67		57	24	81	1,687	
2014	1	43	33	75	79	22	65		51	28	79	1,689	

PERCENTAGE ADVANCED (Level 3)

Grade	Year	White	African Amer	Hispanic	Econ Disadv	Special Educ	LEP	At Risk	Migrant	Male	Female	All	District	Number Tested (All Students)
6	2012												3.6	0
	2013	*	11.8	9.1	10.0	10.0	14.3	9.5		13.0	0.0	10.0	3.1	30
	2014		0.0	0.0	0.0	0.0	0.0	0.0		0.0	0.0	0.0	2.9	25
7	2012	*	0.0	0.0	0.0	0.0	0.0	0.0		0.0	0.0	0.0	1.0	49
	2013		6.3	11.1	8.0	8.0	*	9.1		11.8	0.0	8.0	3.5	25
	2014	*	6.7	6.3	6.3	6.1	8.3	3.4		9.1	0.0	6.1	3.9	33
8	2012	*	5.6	0.0	2.6	2.4	0.0	2.6		0.0	6.3	2.4	1.1	42
	2013	*	0.0	6.7	8.7	7.7	9.1	8.3		11.8	0.0	7.7	2.5	26
	2014		0.0	12.5	5.0	4.8	*	5.6		0.0	12.5	4.8	2.9	21
6-8	2012	0.0	2.9	0.0	1.1	1.1	0.0	1.2		0.0	2.9	1.1	1.9	91
	2013	*	7.0	8.6	9.0	8.6	8.7	9.0		12.3	0.0	8.6	3.0	81
	2014	*	2.3	6.1	4.0	3.8	4.5	3.1		3.9	3.6	3.8	3.3	79

NUMBER TESTED IN GRADE 6-8													
2012	6	35	50	87	91	36	82		56	35	91	1,571	
2013	2	43	35	78	81	23	67		57	24	81	1,687	
2014	1	43	33	75	79	22	65		51	28	79	1,689	

AVERAGE PERCENTAGE OF ITEMS CORRECT BY REPORTING CATEGORY

Grade	Year	REPORTING CATEGORY		
		1. Understanding Across Genres (GR 3-5) 1. Understanding/Analysis Across Genres (GR 6-8)	2. Understanding/Analysis of Literary Texts	3. Understanding/Analysis of Informational Texts
6	2012			
	2013	55.8	58.8	60.7
	2014	45.5	51.8	59.1
7	2012	52.8	52.1	40.0
	2013	68.0	71.3	53.6
	2014	66.7	64.3	50.1
8	2012	61.0	53.3	48.4
	2013	84.6	71.2	74.5
	2014	75.6	73.3	63.7
6-8	2012	56.6	52.7	43.9
	2013	68.8	66.6	62.9
	2014	62.3	62.7	56.6

PERCENTAGE SATISFACTORY (Levels 2 or 3)

Grade	Year	White	African Amer	Hispanic	Econ Disadv	Special Educ	LEP	At Risk	Migrant	Male	Female	All	District	Number Tested (All Students)
7	2012	*	55.6	73.3	66.0	67.3	75.0	66.7		58.6	78.3	67.3	56.7	52
	2013		78.6	77.8	78.3	78.3	*	76.2		73.3	87.5	78.3	63.7	23
	2014	*	93.8	75.0	84.8	85.3	83.3	82.8		78.3	100.0	85.3	62.9	34

NUMBER TESTED IN GRADE 7													
2012	4	18	30	50	52	24	48		29	23	52	586	
2013		14	9	23	23	5	21		15	8	23	509	
2014	1	16	16	33	34	12	29		23	11	34	599	

NUMBER UNSATISFACTORY (Level 1)

Grade	Year	White	African Amer	Hispanic	Econ Disadv	Special Educ	LEP	At Risk	Migrant	Male	Female	All	District	Number Tested (All Students)
7	2012	*	8	8	17	17	6	16		12	5	17	254	52
	2013		3	2	5	5	*	5		4	1	5	185	23
	2014	*	1	4	5	5	2	5		5	0	5	222	34

NUMBER TESTED IN GRADE 7													
2012	4	18	30	50	52	24	48		29	23	52	586	
2013		14	9	23	23	5	21		15	8	23	509	
2014	1	16	16	33	34	12	29		23	11	34	599	

PERCENTAGE ADVANCED (Level 3)

Grade	Year	White	African Amer	Hispanic	Econ Disadv	Special Educ	LEP	At Risk	Migrant	Male	Female	All	District	Number Tested (All Students)
7	2012	*	0.0	3.3	2.0	1.9	4.2	2.1		0.0	4.3	1.9	2.7	52
	2013		0.0	22.2	8.7	8.7	*	9.5		13.3	0.0	8.7	6.3	23
	2014	*	18.8	12.5	15.2	14.7	8.3	13.8		13.0	18.2	14.7	6.3	34

NUMBER TESTED IN GRADE 7													
2012	4	18	30	50	52	24	48		29	23	52	586	
2013		14	9	23	23	5	21		15	8	23	509	
2014	1	16	16	33	34	12	29		23	11	34	599	

AVERAGE PERCENTAGE OF ITEMS CORRECT BY REPORTING CATEGORY

Grade	Year	REPORTING CATEGORY		
		1. Composition ¹ GR 4: Personal Narrative GR 7: Expository	2. Revision	3. Editing
7	2012	1.3	53.1	51.3
	2013	2.7	62.2	53.5
	2014	3.0	68.3	54.6

¹Average score points (range 0-6). A STAAR M composition is rated twice on a scale of 0 to 3, and the ratings are summed to determine score points for the composition. Score point scale: 0=Non-scorable; 2=Very Limited; 3=between Very Limited and Basic; 4=Basic; 5=between Basic and Satisfactory; 6=Satisfactory

PERCENTAGE SATISFACTORY (Levels 2 or 3)

Grade	Year	White	African Amer	Hispanic	Econ Disadv	Special Educ	LEP	At Risk	Migrant	Male	Female	All	District	Number Tested (All Students)
6	2012												46.2	0
	2013	*	70.6	63.6	66.7	66.7	71.4	61.9		69.6	57.1	66.7	54.3	30
	2014		93.8	88.9	91.3	92.0	100.0	88.9		87.5	100.0	92.0	52.0	25
7	2012	*	52.6	51.9	50.0	51.0	52.6	50.0		51.6	50.0	51.0	50.5	49
	2013		68.8	62.5	66.7	66.7	*	61.9		56.3	87.5	66.7	49.4	24
	2014	*	73.3	81.3	78.1	78.8	91.7	75.9		77.3	81.8	78.8	48.8	33
8	2012	*	42.1	39.1	36.6	38.6	26.7	32.5		39.3	37.5	38.6	46.2	44
	2013	*	100.0	93.3	95.7	96.2	90.9	95.8		100.0	88.9	96.2	71.4	26
	2014		84.6	62.5	76.2	77.3	*	72.2		78.6	75.0	77.3	71.0	22
6-8	2012	*	47.4	46.0	43.8	45.2	41.2	41.7		45.8	44.1	45.2	47.7	93
	2013	*	76.7	76.5	75.3	76.3	78.3	74.2		75.0	79.2	76.3	58.5	80
	2014	*	84.1	78.8	81.6	82.5	90.9	78.5		80.8	85.7	82.5	56.7	80

NUMBER TESTED IN GRADES 6-8													
2012	5	38	50	89	93	34	84		59	34	93	1,554	
2013	2	43	34	77	80	23	66		56	24	80	1,659	
2014	1	44	33	76	80	22	65		52	28	80	1,684	

NUMBER UNSATISFACTORY (Level 1)

Grade	Year	White	African Amer	Hispanic	Econ Disadv	Special Educ	LEP	At Risk	Migrant	Male	Female	All	District	Number Tested (All Students)
6	2012												276	0
	2013	*	5	4	10	10	2	8		7	3	10	272	30
	2014		1	1	2	2	0	2		2	0	2	271	25
7	2012	*	9	13	24	24	9	22		15	9	24	276	49
	2013		5	3	8	8	*	8		7	1	8	257	24
	2014	*	4	3	7	7	1	7		5	2	7	310	33
8	2012	*	11	14	26	27	11	27		17	10	27	260	44
	2013	*	0	1	1	1	1	1		0	1	1	159	26
	2014		2	3	5	5	*	5		3	2	5	149	22
6-8	2012	*	20	27	50	51	20	49		32	19	51	812	93
	2013	*	10	8	19	19	5	17		14	5	19	688	80
	2014	*	7	7	14	14	2	14		10	4	14	730	80

NUMBER TESTED IN GRADES 6-8													
2012	5	38	50	89	93	34	84		59	34	93	1,554	
2013	2	43	34	77	80	23	66		56	24	80	1,659	
2014	1	44	33	76	80	22	65		52	28	80	1,684	

PERCENTAGE ADVANCED (Level 3)

Grade	Year	White	African Amer	Hispanic	Econ Disadv	Special Educ	LEP	At Risk	Migrant	Male	Female	All	District	Number Tested (All Students)
6	2012												5.5	0
	2013	*	11.8	9.1	10.0	10.0	14.3	9.5		13.0	0.0	10.0	4.9	30
	2014		0.0	22.2	8.7	8.0	28.6	11.1		12.5	0.0	8.0	3.4	25
7	2012	*	0.0	7.4	4.2	4.1	10.5	4.5		3.2	5.6	4.1	1.1	49
	2013		12.5	12.5	12.5	12.5	*	9.5		12.5	12.5	12.5	3.0	24
	2014	*	6.7	0.0	3.1	3.0	0.0	0.0		4.5	0.0	3.0	2.3	33
8	2012	*	0.0	0.0	0.0	0.0	0.0	0.0		0.0	0.0	0.0	1.2	44
	2013	*	10.0	0.0	8.7	7.7	0.0	8.3		11.8	0.0	7.7	2.2	26
	2014		7.7	0.0	4.8	4.5	*	0.0		7.1	0.0	4.5	1.9	22
6-8	2012	*	0.0	4.0	2.2	2.2	5.9	2.4		1.7	2.9	2.2	2.6	93
	2013	*	11.6	5.9	10.4	10.0	4.3	9.1		12.5	4.2	10.0	3.4	80
	2014	*	4.5	6.1	5.3	5.0	9.1	3.1		7.7	0.0	5.0	2.6	80

NUMBER TESTED IN GRADE 6-8													
2012	5	38	50	89	93	34	84		59	34	93	1,554	
2013	2	43	34	77	80	23	66		56	24	80	1,659	
2014	1	44	33	76	80	22	65		52	28	80	1,684	

AVERAGE PERCENTAGE OF ITEMS CORRECT BY REPORTING CATEGORY

Grade	Year	REPORTING CATEGORY				
		1. Numbers, Operations, and Quantitative Reasoning	2. Patterns, Relationships, and Algebraic Reasoning	3. Geometry and Spatial Reasoning	4. Measurement	5. Probability and Statistics
6	2012					
	2013	55.5	53.7	63.9	40.0	58.9
	2014	52.0	54.8	58.7	46.0	66.0
7	2012	36.4	40.8	44.1	32.3	42.6
	2013	57.2	62.5	63.5	56.2	50.0
	2014	47.1	51.8	54.9	42.9	47.0
8	2012	36.8	43.0	36.0	32.7	40.1
	2013	54.6	72.4	52.6	60.8	65.9
	2014	51.4	56.6	47.7	44.5	58.0
6-8	2012	36.6	41.8	40.3	32.5	41.4
	2013	55.7	62.4	60.1	51.6	58.5
	2014	49.8	54.1	54.1	44.3	55.9

PERCENTAGE SATISFACTORY (Levels 2 or 3)

Grade	Year	White	African Amer	Hispanic	Econ Disadv	Special Educ	LEP	At Risk	Migrant	Male	Female	All	District	Number Tested (All Students)
8	2012		46.7	50.0	45.7	47.4	53.3	47.1		50.0	41.7	47.4	58.2	38
	2013	*	90.0	69.2	77.3	79.2	70.0	81.8		81.3	75.0	79.2	59.3	24
	2014		84.6	55.6	75.0	73.9	*	68.4		71.4	77.8	73.9	63.5	23

NUMBER TESTED IN GRADE 8													
2012		15	22	35	38	15	34		26	12	38	457	
2013	1	10	13	22	24	10	22		16	8	24	526	
2014		13	9	20	23	3	19		14	9	23	474	

NUMBER UNSATISFACTORY (Level 1)

Grade	Year	White	African Amer	Hispanic	Econ Disadv	Special Educ	LEP	At Risk	Migrant	Male	Female	All	District	Number Tested (All Students)
8	2012		8	11	19	20	7	18		13	7	20	191	38
	2013	*	1	4	5	5	3	4		3	2	5	214	24
	2014		2	4	5	6	*	6		4	2	6	173	23

NUMBER TESTED IN GRADE 8													
2012		15	22	35	38	15	34		26	12	38	457	
2013	1	10	13	22	24	10	22		16	8	24	526	
2014		13	9	20	23	3	19		14	9	23	474	

PERCENTAGE ADVANCED (Level 3)

Grade	Year	White	African Amer	Hispanic	Econ Disadv	Special Educ	LEP	At Risk	Migrant	Male	Female	All	District	Number Tested (All Students)
8	2012	*	0.0	0.0	0.0	0.0	0.0	0.0		0.0	0.0	0.0	0.4	38
	2013	*	10.0	0.0	4.5	4.2	0.0	0.0		0.0	12.5	4.2	2.5	24
	2014		15.4	22.2	20.0	17.4	*	10.5		14.3	22.2	17.4	3.8	23

NUMBER TESTED IN GRADE 8													
2012	1	15	22	35	38	15	34		26	12	38	457	
2013	1	10	13	22	24	10	22		16	8	24	526	
2014		13	9	20	23	3	19		14	9	23	474	

AVERAGE PERCENTAGE OF ITEMS CORRECT BY REPORTING CATEGORY

Grade	Year	REPORTING CATEGORY			
		1. Matter and Energy	2. Force, Motion, and Energy	3. Earth and Space	4. Organisms and Environments
8	2012	53.8	51.8	51.4	40.2
	2013	68.6	80.8	61.7	61.7
	2014	64.4	77.0	62.1	67.2

PERCENTAGE SATISFACTORY (Levels 2 or 3)

Grade	Year	White	African Amer	Hispanic	Econ Disadv	Special Educ	LEP	At Risk	Migrant	Male	Female	All	District	Number Tested (All Students)
8	2012	*	53.8	27.3	33.3	36.1	28.6	34.4		37.5	33.3	36.1	52.3	36
	2013	*	90.0	84.6	86.4	87.5	90.0	86.4		93.8	75.0	87.5	59.5	24
	2014		76.9	88.9	80.0	82.6	*	78.9		85.7	77.8	82.6	59.3	23

NUMBER TESTED IN GRADE 8													
2012	1	13	22	33	36	14	32		24	12	36	451	
2013	1	10	13	22	24	10	22		16	8	24	516	
2014		13	9	20	23	3	19		14	9	23	479	

NUMBER UNSATISFACTORY (Level 1)

Grade	Year	White	African Amer	Hispanic	Econ Disadv	Special Educ	LEP	At Risk	Migrant	Male	Female	All	District	Number Tested (All Students)
8	2012	*	6	16	22	23	10	21		15	8	23	215	36
	2013	*	1	2	3	3	1	3		1	2	3	209	24
	2014		3	1	4	4	*	4		2	2	4	195	23

NUMBER TESTED IN GRADE8													
2012	1	13	22	33	36	14	32		24	12	36	451	
2013	1	10	13	22	24	10	22		16	8	24	516	
2014		13	9	20	23	3	19		14	9	23	479	

PERCENTAGE ADVANCED (Level 3)

Grade	Year	White	African Amer	Hispanic	Econ Disadv	Special Educ	LEP	At Risk	Migrant	Male	Female	All	District	Number Tested (All Students)
8	2012	*	7.7	0.0	0.0	2.8	0.0	3.1		4.2	0.0	2.8	2.9	36
	2013	*	10.0	0.0	4.5	4.2	0.0	0.0		0.0	12.5	4.2	1.9	24
	2014		7.7	33.3	20.0	17.4	*	15.8		14.3	22.2	17.4	3.5	23

NUMBER TESTED IN GRADE 8													
2012	1	13	22	33	36	14	32		24	12	36	451	
2013	1	10	13	22	24	10	22		16	8	24	516	
2014		13	9	20	23	3	19		14	9	23	479	

AVERAGE PERCENTAGE OF ITEMS CORRECT BY REPORTING CATEGORY

Grade	Year	REPORTING CATEGORY			
		1. History	2. Geography and Culture	3. Government and Citizenship	4. Economics, Science, Technology, and Society
8	2012	43.4	47.2	47.5	47.2
	2013	56.8	62.5	52.1	73.6
	2014	60.1	71.3	67.0	68.8

PERCENTAGE DEMONSTRATING IMPROVEMENT


Grade	Level 1 in 2013		Level 2 in 2013		Level 3 in 2013		Levels 1-3 in 2013	
	Number Tested Both Years	Percentage Improved in 2014	Number Tested Both Years	Percentage Improved in 2014	Number Tested Both Years	Percentage Improved in 2014	Number Tested Both Years	Percentage Improved in 2014
6	3	*	12	41.7	0		15	46.7
7	6	33.3	14	35.7	0		20	35.0
8	6	50.0	10	50.0	0		16	50.0
ALL	15	46.7	36	41.7	0		51	43.1

PERFORMANCE IN 2014

Grade 2013-14 (N Rated)	Domain:	Listening		Speaking		Writing		Reading		Composite	
	2014 Level	N	%	N	%	N	%	N	%	N	%
6 (136)	Beginning	1	0.7	1	0.7	1	0.7	9	6.7	1	0.8
	Intermediate	1	0.7	1	0.7	14	10.4	54	40.0	14	10.5
	Advanced	25	18.7	51	38.1	82	61.2	47	34.8	78	58.6
	Advanced High	107	79.9	81	60.4	37	27.6	25	18.5	40	30.1
7 (125)	Beginning	1	0.8	1	0.8	1	0.8	7	5.8	1	0.8
	Intermediate	1	0.8	1	0.8	4	3.2	31	25.8	7	5.9
	Advanced	10	8.1	15	12.1	39	31.5	55	45.8	45	37.8
	Advanced High	112	90.3	107	86.3	80	64.5	27	22.5	66	55.5
8 (81)	Beginning	0	0.0	0	0.0	0	0.0	5	6.5	0	0.0
	Intermediate	4	4.9	4	4.9	3	3.7	21	27.3	6	7.8
	Advanced	3	3.7	8	9.9	37	45.7	43	55.8	40	51.9
	Advanced High	74	91.4	69	85.2	41	50.6	8	10.4	31	40.3
ALL (342)	Beginning	2	0.6	2	0.6	2	0.6	21	6.3	2	0.6
	Intermediate	6	1.8	6	1.8	21	6.2	106	31.9	27	8.2
	Advanced	38	11.2	74	21.8	158	46.6	145	43.7	163	49.5
	Advanced High	293	86.4	257	75.8	158	46.6	60	18.1	137	41.6

**PROGRESSION FROM
2013 TO 2014**

Number Rated Both Years N (%) Progressed	2014 Level	2013 Level			
		Beg	Int	Adv	Adv High
126 46 (36.5%)	Beginning	0			
	Intermediate	1	12		
	Advanced	1	7	68	
	Advanced High	0	1	36	
102 72 (70.6%)	Beginning	0			
	Intermediate	0	7		
	Advanced	2	12	23	
	Advanced High	0	2	56	
68 37 (54.4%)	Beginning	0			
	Intermediate	0	4		
	Advanced	0	9	27	
	Advanced High	0	1	27	
296 155 (52.4%)	Beginning	0			
	Intermediate	1	23		
	Advanced	3	28	118	
	Advanced High	0	4	119	

 Indicates students who progressed at least one level from 2013 to 2014.

SEMESTER 1 TESTS

Number Tested	Averages				% Passing		District % Passing	
	% Items Correct	Scale Score	Course Mark	Course Mark (no ACP)	ACP	Course	ACP	Course

ALGEBRA I PRE-AP

16	49.6	66.4	83.8	85.7	31.3	100.0	65.2	96.3
----	------	------	------	------	------	-------	------	------

BEGINNING LANGUAGE ARTS 6 FOR ESL

4	*	*	*	*	*	*	45.0	*
---	---	---	---	---	---	---	------	---

BEGINNING LANGUAGE ARTS 7 FOR ESL

4	*	*	*	*	*	*	39.3	*
---	---	---	---	---	---	---	------	---

BEGINNING LANGUAGE ARTS 8 FOR ESL

2	*	*	*	*	*	*	40.7	*
---	---	---	---	---	---	---	------	---

BEGINNING READING 6 FOR ESL

4	*	*	*	*	*	*	42.9	*
---	---	---	---	---	---	---	------	---

INTERMEDIATE LANGUAGE ARTS 7 FOR ESL

3	*	*	*	*	*	*	59.0	*
---	---	---	---	---	---	---	------	---

INTERMEDIATE LANGUAGE ARTS 8 FOR ESL

3	*	*	*	*	*	*	40.0	*
---	---	---	---	---	---	---	------	---

LANGUAGE ARTS 6

245	51.0	70.6	80.6	81.6	54.3	95.4	51.1	88.5
-----	------	------	------	------	------	------	------	------

LANGUAGE ARTS 6 PRE-AP

40	61.8	71.4	89.3	91.3	70.0	100.0	79.1	98.0
----	------	------	------	------	------	-------	------	------

LANGUAGE ARTS 7

216	44.0	70.0	79.4	80.5	51.9	96.6	52.3	86.0
-----	------	------	------	------	------	------	------	------

LANGUAGE ARTS 7 PRE-AP

29	59.4	72.9	84.6	85.9	72.4	100.0	72.1	96.8
----	------	------	------	------	------	-------	------	------

SEMESTER 2 TESTS

Number Tested	Averages				% Passing		District % Passing	
	% Items Correct	Scale Score	Course Mark	Course Mark (no ACP)	ACP	Course	ACP	Course

ALGEBRA I PRE-AP

--	--	--	--	--	--	--	--	--

BEGINNING LANGUAGE ARTS 6 FOR ESL

4	*	*	*	*	*	*	34.2	*
---	---	---	---	---	---	---	------	---

BEGINNING LANGUAGE ARTS 7 FOR ESL

8	39.2	69.6	83.3	84.1	25.0	100.0	45.1	95.5
---	------	------	------	------	------	-------	------	------

BEGINNING LANGUAGE ARTS 8 FOR ESL

4	*	*	*	*	*	*	49.6	*
---	---	---	---	---	---	---	------	---

BEGINNING READING 6 FOR ESL

3	*	*	*	*	*	*	44.4	*
---	---	---	---	---	---	---	------	---

INTERMEDIATE LANGUAGE ARTS 7 FOR ESL

4	*	*	*	*	*	*	62.9	*
---	---	---	---	---	---	---	------	---

INTERMEDIATE LANGUAGE ARTS 8 FOR ESL

3	*	*	*	*	*	*	61.5	*
---	---	---	---	---	---	---	------	---

LANGUAGE ARTS 6

229	51.4	70.2	81.5	82.7	55.5	98.2	56.8	85.3
-----	------	------	------	------	------	------	------	------

LANGUAGE ARTS 6 PRE-AP

38	54.7	71.1	87.5	89.3	65.8	100.0	64.3	96.1
----	------	------	------	------	------	-------	------	------

LANGUAGE ARTS 7

213	57.7	71.2	81.8	82.9	58.7	99.5	59.3	82.9
-----	------	------	------	------	------	------	------	------

LANGUAGE ARTS 7 PRE-AP

34	61.7	69.8	85.4	87.0	61.8	100.0	79.1	96.0
----	------	------	------	------	------	-------	------	------

SEMESTER 1 TESTS

Number Tested	Averages				% Passing		District % Passing	
	% Items Correct	Scale Score	Course Mark	Course Mark (no ACP)	ACP	Course	ACP	Course

LANGUAGE ARTS 8

199	48.9	66.7	78.8	80.1	43.7	90.3	56.7	87.7
-----	------	------	------	------	------	------	------	------

LANGUAGE ARTS 8 PRE-AP

54	59.2	70.1	83.5	84.9	63.0	98.1	76.4	97.3
----	------	------	------	------	------	------	------	------

MATHEMATICS 6

253	38.2	71.5	75.2	75.6	51.8	75.8	45.6	86.2
-----	------	------	------	------	------	------	------	------

MATHEMATICS 6 PRE-AP

33	39.9	66.6	80.8	82.4	30.3	87.5	65.8	97.0
----	------	------	------	------	------	------	------	------

MATHEMATICS 7

251	46.8	74.2	79.6	80.1	66.5	95.9	49.3	84.8
-----	------	------	------	------	------	------	------	------

MATHEMATICS 8

244	51.1	68.8	76.9	77.9	46.7	81.1	51.9	84.5
-----	------	------	------	------	------	------	------	------

MS HEALTH EDUCATION

142	60.3	75.2	80.8	81.3	76.8	90.4	70.0	92.0
-----	------	------	------	------	------	------	------	------

PHYSICAL EDUCATION 6

283	71.8	84.0	85.4	57.2	98.2	74.0	99.1	
-----	------	------	------	------	------	------	------	--

PHYSICAL EDUCATION 7 & 8

224	76.5	78.2	78.3	76.8	96.9	83.6	98.3	
-----	------	------	------	------	------	------	------	--

READING 6

286	58.3	70.2	76.7	77.4	59.4	86.4	56.3	90.6
-----	------	------	------	------	------	------	------	------

READING MASTERY 7

114	47.4	68.4	77.2	78.1	45.6	95.5	50.3	84.6
-----	------	------	------	------	------	------	------	------

SEMESTER 2 TESTS

Number Tested	Averages				% Passing		District % Passing	
	% Items Correct	Scale Score	Course Mark	Course Mark (no ACP)	ACP	Course	ACP	Course

LANGUAGE ARTS 8

187	59.2	71.6	77.7	78.4	65.2	93.0	72.6	85.9
-----	------	------	------	------	------	------	------	------

LANGUAGE ARTS 8 PRE-AP

56	55.1	70.1	83.7	85.1	53.6	100.0	75.8	96.8
----	------	------	------	------	------	-------	------	------

MATHEMATICS 6

243	42.8	70.9	77.0	77.7	53.5	81.9	42.2	81.1
-----	------	------	------	------	------	------	------	------

MATHEMATICS 6 PRE-AP

28	51.8	67.1	81.3	82.9	39.3	96.4	72.1	95.6
----	------	------	------	------	------	------	------	------

MATHEMATICS 7

254	55.8	75.4	78.9	79.2	67.7	90.5	50.1	79.6
-----	------	------	------	------	------	------	------	------

MATHEMATICS 8

231	47.7	68.6	78.8	79.9	43.7	93.8	51.9	85.4
-----	------	------	------	------	------	------	------	------

MS HEALTH EDUCATION

144	62.8	77.3	82.0	82.5	79.9	85.7	73.6	89.8
-----	------	------	------	------	------	------	------	------

PHYSICAL EDUCATION 6

286	73.0	86.4	87.9	66.1	100.0	82.8	99.0	
-----	------	------	------	------	-------	------	------	--

PHYSICAL EDUCATION 7 & 8

233	73.2	83.7	84.9	68.7	98.3	88.6	97.2	
-----	------	------	------	------	------	------	------	--

READING 6

270	49.6	69.1	78.4	79.4	50.0	93.9	55.7	86.3
-----	------	------	------	------	------	------	------	------

READING MASTERY 7

117	50.8	69.9	74.7	75.1	49.6	86.0	59.4	81.4
-----	------	------	------	------	------	------	------	------

SEMESTER 1 TESTS

Number Tested	Averages				% Passing		District % Passing	
	% Items Correct	Scale Score	Course Mark	Course Mark (no ACP)	ACP	Course	ACP	Course

READING MASTERY 8

150	56.3	71.5	75.6	76.0	62.7	82.3	63.1	85.0
-----	------	------	------	------	------	------	------	------

SCIENCE 6

289	50.7	70.4	79.3	80.3	55.7	98.2	59.9	91.6
-----	------	------	------	------	------	------	------	------

SCIENCE 7

231	44.9	66.3	77.1	78.3	35.1	88.9	51.0	85.7
-----	------	------	------	------	------	------	------	------

SCIENCE 7 PRE-AP

20	50.1	64.4	84.2	86.4	25.0	100.0	75.2	97.8
----	------	------	------	------	------	-------	------	------

SCIENCE 8 & SCIENCE 8 PRE-AP

258	48.5	65.7	76.1	77.2	36.8	93.7	64.6	90.4
-----	------	------	------	------	------	------	------	------

SOCIAL STUDIES 6

288	47.1	66.9	78.9	80.3	39.2	96.8	42.8	90.4
-----	------	------	------	------	------	------	------	------

TECHNOLOGY APPLICATIONS

157	41.4	64.8	87.8	90.4	26.8	98.1	60.4	93.7
-----	------	------	------	------	------	------	------	------

TEXAS STUDIES 7

229	46.2	70.1	77.5	78.2	45.4	90.0	49.3	87.3
-----	------	------	------	------	------	------	------	------

TEXAS STUDIES 7 PRE-AP

26	62.4	71.8	84.3	85.7	53.8	100.0	68.1	97.3
----	------	------	------	------	------	-------	------	------

U.S. STUDIES 8

199	46.8	69.3	74.4	74.9	45.2	83.6	50.5	85.9
-----	------	------	------	------	------	------	------	------

U.S. STUDIES 8 PRE-AP

59	60.0	70.0	81.4	82.6	50.8	100.0	70.3	97.8
----	------	------	------	------	------	-------	------	------

SEMESTER 2 TESTS

Number Tested	Averages				% Passing		District % Passing	
	% Items Correct	Scale Score	Course Mark	Course Mark (no ACP)	ACP	Course	ACP	Course

READING MASTERY 8

137	60.2	73.5	73.5	73.5	73.0	76.7	71.7	85.4
-----	------	------	------	------	------	------	------	------

SCIENCE 6

268	56.2	72.1	79.2	80.0	61.6	94.4	57.7	87.5
-----	------	------	------	------	------	------	------	------

SCIENCE 7

224	58.7	74.7	79.5	79.9	67.9	89.8	71.7	85.1
-----	------	------	------	------	------	------	------	------

SCIENCE 7 PRE-AP

24	67.6	75.1	88.9	90.4	75.0	100.0	81.2	96.9
----	------	------	------	------	------	-------	------	------

SCIENCE 8 & SCIENCE 8 PRE-AP

242	56.5	69.6	75.6	76.3	54.5	76.5	64.5	88.8
-----	------	------	------	------	------	------	------	------

SOCIAL STUDIES 6

267	53.5	69.0	80.4	81.6	50.9	91.3	56.1	86.5
-----	------	------	------	------	------	------	------	------

TECHNOLOGY APPLICATIONS

136	43.0	65.1	85.2	87.3	28.7	95.2	65.5	89.7
-----	------	------	------	------	------	------	------	------

TEXAS STUDIES 7

217	47.9	72.1	80.8	81.7	56.7	94.1	59.9	84.9
-----	------	------	------	------	------	------	------	------

TEXAS STUDIES 7 PRE-AP

31	63.4	74.5	87.1	88.4	61.3	100.0	79.0	95.9
----	------	------	------	------	------	-------	------	------

U.S. STUDIES 8

179	59.9	73.2	74.7	74.9	71.5	79.7	54.3	84.4
-----	------	------	------	------	------	------	------	------

U.S. STUDIES 8 PRE-AP

63	70.7	74.2	83.9	84.9	69.8	100.0	69.5	95.0
----	------	------	------	------	------	-------	------	------