

# DATA PACKET

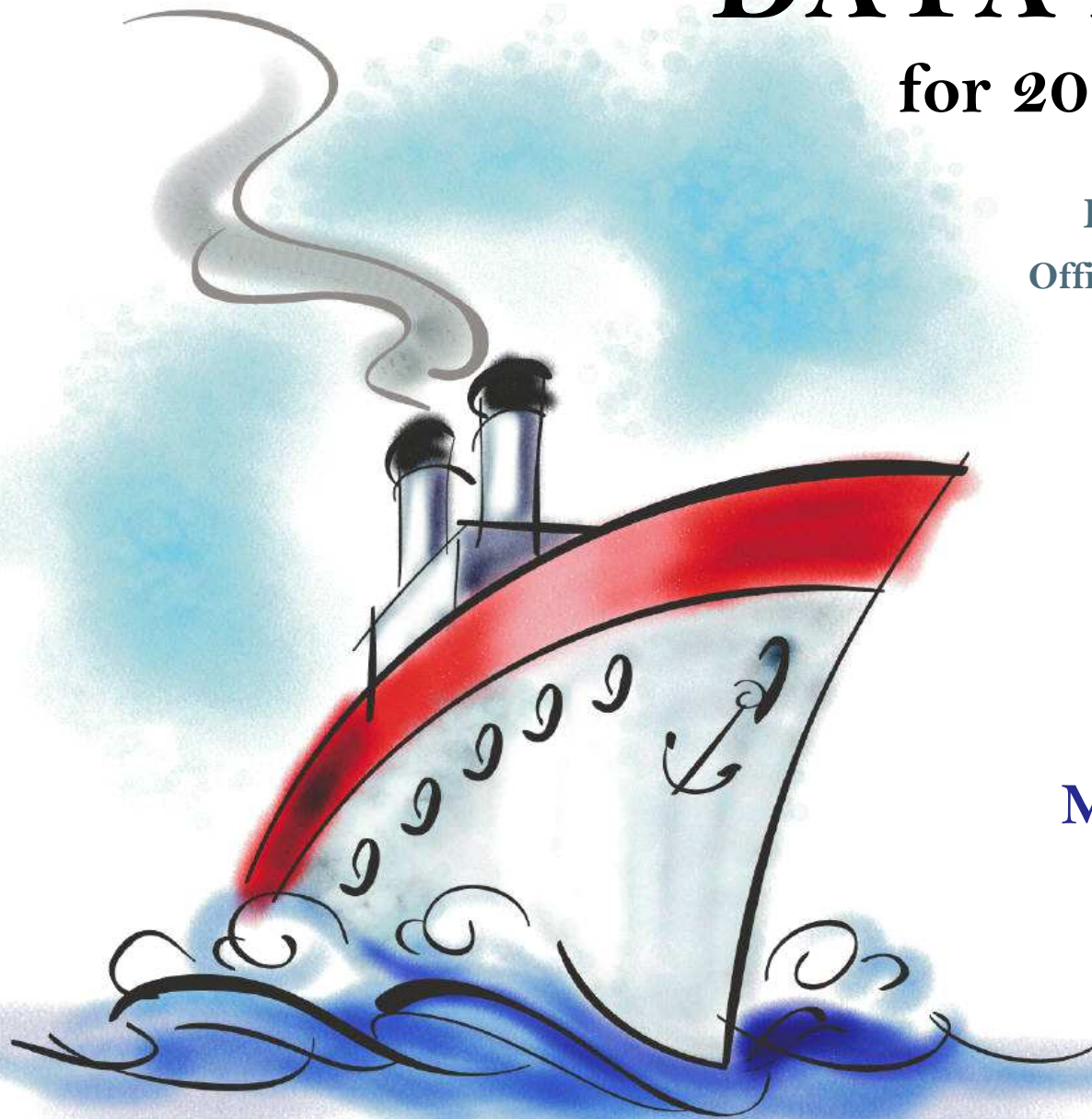
for 2014-15 planning

Evaluation & Assessment  
Office of Institutional Research  
<http://mydata.dallasisd.org>  
[OIR@dallasisd.org](mailto:OIR@dallasisd.org)

September 5, 2014

School Number 43

**T.W. BROWNE  
MIDDLE SCHOOL**



Dallas Independent School District

2. Contents ..... Table of Contents

**STUDENTS AND STAFF**

- 5. Summary ..... Summary of Student and Teacher Statistics
- 7. Enroll (2) ..... Enrollment Statistics by Select Student Group
- 9. Teachers ..... Teacher Statistics

**STAAR (English)**

- 10. Reading (3-8) .... STAAR 3-8 Reading in English
- 18. Math (3-8) ..... STAAR 3-8 Mathematics in English
- 26. Science (3-8) ..... STAAR 3-8 Science in English

**STAAR L**

- 34. Math (3-8) ..... STAAR L 3-8 Mathematics

**STAAR M**

- 38. Reading (3-8) .... STAAR M 3-8 Reading
- 46. Math (3-8) ..... STAAR M 3-8 Mathematics
- 54. SS (3-8) ..... STAAR M 3-8 Social Studies

**ENGLISH PROFICIENCY**

- 58. WMLS ..... Woodcock-Muñoz Language Survey

**LOCAL ASSESSMENT**

- 60. ACP ..... Assessments of Course Performance

3. Notes ..... Notes and Data Descriptions

- 6. Enroll (1) ..... Enrollment Statistics by Ethnicity
- 8. Attendance ..... Student Attendance Statistics

- 14. Writing (3-8) ..... STAAR 3-8 Writing in English
- 22. Math (EOC) ..... STAAR EOC Mathematics
- 30. SS (3-8) ..... STAAR 3-8 Social Studies in English

- 42. Writing (3-8) ..... STAAR M 3-8 Writing
- 50. Science (3-8) ..... STAAR M 3-8 Science

- 59. TELPAS ..... Texas English Language Proficiency Assessment System

## **2013-14 SCHOOL SUMMARY**

- Student percentages are computed as the percentage of total student enrollment.
- Additional statistics are available in ENROLLMENT and TEACHER reports.
- Race/ethnic categories are based on the newest federal standards for ethnicity and race reporting, though some categories have been combined because of small group sizes. Students reporting their ethnicity as “Hispanic” are not counted in any race category.
- “Economically disadvantaged” students are those who qualify for free or reduced-price lunch through the federal government's program.
- Teacher demographics and assignments are from the district's Public Education Information Management System (PEIMS) submission to the TEA.

## **ENROLLMENT**

- Statistics are based on the school's enrollment at the end of the fifth six-weeks grading period.
- “Economically disadvantaged” students are those receiving free or reduced-price lunches.
- “New” students were new to the district in 2013-14. They are counted as new if not enrolled in a district campus before the last day of the 2012-13 school year.
- The “retention rate” is the percentage of students in the same grade at the end of the fifth six-weeks grading period for both 2012-13 and 2013-14.

## **ATTENDANCE**

- Statistics are based on student attendance through the end of the sixth six-weeks grading period (the end of the school year).
- “Average daily membership” is the total number of school days students were ENROLLED divided by the number of school days in the year.
- The “average daily attendance” number (N) is the total number of school days students were IN ATTENDANCE divided by the number of school days in the year. The “average daily attendance” percentage (%) is the average attendance rate. For each student, the number of days attended is divided by the number of days enrolled. This rate is then averaged across students.
- The number (N) of “yearly transactions” is the total number of transfer and withdrawal transactions in the school year. The percentage (%) is the number of transactions divided by “average daily membership,” which gives (on average) the percentage of the membership associated with a transaction.
- “Continuously enrolled” students are enrolled and in attendance for a minimum number of instructional days in at least one course at the school between the beginning of the school year and the first day of the main STAAR testing period. The minimum number varies depending on the school year's calendar, but is typically around 130 days.
- The “stability rate” is the number of continuously enrolled students divided by “average daily membership.”

## **TEACHERS**

- Teacher demographics and assignments are from the district's Public Education Information Management System (PEIMS) submission to the TEA.
- Teacher absences counted towards the average DO NOT include vacation days (coded as VAC in personnel database).
- Retention rate for a school year is computed with numerator “# of teachers assigned to the school both that year and the year prior” and denominator “# of teachers assigned to the school for the prior year.” That is, the retention rate is the percentage of the prior year's teachers who continued at the school.

### **STAAR, STAAR L, and STAAR M**

- Cells marked with an asterisk (\*) indicate five or fewer students were tested. Blank cells indicate no students were tested.
- Student group assignments are from the district's Public Education Information Management System (PEIMS) submission to the TEA.
- STAAR statistics are based on results from standard STAAR only. STAAR L and STAAR M statistics are computed separately, following TEA reporting practice.
- “Percentage Satisfactory” is the percentage of students achieving Level 2 (Satisfactory) or Level 3 (Advanced).
- Statistics by reporting category are averages for all students (across student groups and genders).
- An “average percentage correct” is computed as follows: for each student, divide the number of items correctly answered by the total number of items in the test section, then average the resulting percentages across all students. For short answers on EOC English tests, an “average rating” is presented; STAAR EOC short answers are rated on a scale of 0 to 3. For written compositions on writing tests, “average score points” is presented. Additional details provided in report footnotes.
- Reading and mathematics statistics for SSI grades 5 and 8 are based on scores cumulative through the second administration.

### **TELPAS**

- Students are counted as having tested if any one of the four domains is rated. Because a TELPAS composite rating is not assigned to a student unless all four domains are rated, the number of TELPAS composite ratings may be smaller than the number tested.
- If a student's composite rating did not increase at least one level from 2013 to 2014, the TEA did not report the 2013 composite rating.
- If a student is rated as advanced high in 2014, the TEA does not differentiate between the advanced and advanced high levels from 2013.

### **ACP**

- Cells marked with an asterisk (\*) indicate five or fewer students were tested. Blank cells indicate no students were tested.
- The ACPs are semester exams administered in grades K-12. Not all courses have ACPs. In MIDDLE and HIGH school, ACP results account for a portion of students' final semester grades (10% and 15% respectively). “Average course mark (no ACP)” is computed from semester grades before factoring in ACP scores. In ELEMENTARY school, ACP results account for 5% of students' semester grades for core courses; course-grade statistics are not reported in data packets for elementary grades.
- Raw scores on the ACPs (percentage of items correct) are scaled each year to maintain similar annual passing rates for the district.
- A scale score of at least 70 percent is required to pass an ACP. A course mark of at least 70 percent is required to pass a course.
- Statistics are computed separately for Semester 1 and Semester 2 tests; time of administration during the school year is not relevant. Results from tests written for different school years are not combined.

**STUDENT ENROLLMENT**

Grade	Enrollment
6	322
7	321
8	321
ALL	964

**STUDENT AND TEACHER RACE/ETHNICITY**

Ethnicity/Race	Students		Teachers	
	Number	Percent	Number	Percent
Black/African American	533	55.3	43	64.2
American Indian/Alaska Native	2	0.2	*	*
Asian/Hawaiian/Pacific Islander	1	0.1	*	*
Hispanic	417	43.3	5	7.5
White	7	0.7	17	25.4
Multiple	3	0.3	2	3.0
Other* (teachers only)	—	—	0	0.0
Not reported (students only)	0	0.0	—	—

\*For teachers, "Other" category includes American Indian/Alaska Native and Asian/Hawaiian/Pacific Islander.

**SELECT STUDENT GROUP ENROLLMENT**

Group	Number	Percent
At-Risk	806	83.6
Economically disadvantaged	920	95.4
Limited English proficient (LEP)	247	25.6
Special education	109	11.3
Talented and Gifted (TAG)	79	8.2

Grade	Year	Enrollment	African American		American Indian		Asian		Hispanic		White		Multiple category	
			N	%	N	%	N	%	N	%	N	%	N	%
6	2012													
	2013	348	190	54.6	1	0.3	0	0.0	155	44.5	2	0.6	0	0.0
	2014	322	188	58.4	1	0.3	1	0.3	128	39.8	2	0.6	2	0.6
7	2012	370	106	28.6	0	0.0	2	0.5	259	70.0	1	0.3	1	0.3
	2013	320	158	49.4	2	0.6	0	0.0	155	48.4	3	0.9	1	0.3
	2014	321	176	54.8	0	0.0	0	0.0	143	44.5	2	0.6	0	0.0
8	2012	419	123	29.4	1	0.2	2	0.5	287	68.5	2	0.5	3	0.7
	2013	279	141	50.5	0	0.0	1	0.4	133	47.7	3	1.1	0	0.0
	2014	321	169	52.6	1	0.3	0	0.0	146	45.5	3	0.9	1	0.3
6-8	2012	789	229	29.0	1	0.1	4	0.5	546	69.2	3	0.4	4	0.5
	2013	947	489	51.6	3	0.3	1	0.1	443	46.8	8	0.8	1	0.1
	2014	964	533	55.3	2	0.2	1	0.1	417	43.3	7	0.7	3	0.3

Grade	Year	Enrollment	Economically Disadvantaged		LEP		Special Education		At Risk		TAG		New (to District)		Gender		Retention Rate (%)
			N	%	N	%	N	%	N	%	N	%	N	%	% Male	% Female	
6	2012																
	2013	348	335	96.3	103	29.6	41	11.8	266	76.4	35	10.1	33	9.5	54.9	45.1	3.2
	2014	322	312	96.9	91	28.3	27	8.4	261	81.1	29	9.0	38	11.8	58.7	41.3	2.5
7	2012	370	338	91.4	104	28.1	32	8.6	241	65.1	34	9.2	41	11.1	55.1	44.9	1.6
	2013	320	301	94.1	57	17.8	44	13.8	205	64.1	30	9.4	39	12.2	54.1	45.9	4.7
	2014	321	307	95.6	99	30.8	36	11.2	277	86.3	27	8.4	36	11.2	50.2	49.8	2.5
8	2012	419	379	90.5	97	23.2	45	10.7	281	67.1	29	6.9	50	11.9	50.4	49.6	2.6
	2013	279	259	92.8	46	16.5	31	11.1	176	63.1	25	9.0	36	12.9	51.3	48.7	2.5
	2014	321	301	93.8	57	17.8	46	14.3	268	83.5	23	7.2	44	13.7	53.3	46.7	2.8
6-8	2012	789	717	90.9	201	25.5	77	9.8	522	66.2	63	8.0	91	11.5	52.6	47.4	2.2
	2013	947	895	94.5	206	21.8	116	12.2	647	68.3	90	9.5	108	11.4	53.5	46.5	3.5
	2014	964	920	95.4	247	25.6	109	11.3	806	83.6	79	8.2	118	12.2	54.0	46.0	2.6

Grade	Year	Average Daily Membership		Average Daily Attendance				Yearly Transactions			Continuously Enrolled		Stability Rate	
		N	District	N	%	District N	District %	N	%	District %	N	District	%	District
6	2012		10,683			10,315	96.6			17.6		9,420		88.2
	2013	351	11,463	336	95.6	11,062	96.5	120	34.2	21.1	292	10,320	83.2	90.0
	2014	323	10,808	310	95.7	10,413	96.3	102	31.5	20.0	261	9,554	80.7	88.4
7	2012	370	10,204	353	95.4	9,727	95.3	86	23.3	23.8	308	8,576	83.3	84.0
	2013	318	10,542	303	95.1	10,116	96.0	159	50.0	24.5	252	9,357	79.2	88.8
	2014	323	11,195	307	95.2	10,729	95.8	116	35.9	22.1	254	9,852	78.7	88.0
8	2012	410	10,369	390	95.0	9,838	94.9	44	10.7	15.5	333	8,711	81.2	84.0
	2013	284	9,955	271	95.4	9,486	95.3	94	33.1	17.6	231	8,664	81.4	87.0
	2014	324	10,449	307	94.8	9,970	95.4	53	16.4	13.1	252	9,097	77.9	87.1
6-8	2012	780	31,256	742	95.2	29,880	95.6	130	16.7	18.9	641	26,707	82.2	85.4
	2013	953	31,960	909	95.4	30,665	96.0	373	39.1	21.1	775	28,341	81.3	88.7
	2014	970	32,451	924	95.2	31,112	95.9	271	27.9	18.5	767	28,503	79.1	87.8



Teachers: 67

**DISTRIBUTIONS**

Ethnicity/Race	Number	Percentage
African American	43	64.2
Hispanic	5	7.5
White	17	25.4
Multiple	2	3.0
Other	0	0.0

Gender	Number	Percentage
Female	47	70.1
Male	20	29.9

**ATTENDANCE / RETENTION**

	Average Absences	Retention Rate
2011-12	6.6	—
2012-13	6.5	44.7
2013-14	8.3	63.3

**YEARS EXPERIENCE**

Years	Number	Percentage
Beginning (0)	12	17.9
1	7	10.4
2	4	6.0
3	5	7.5
4	2	3.0
5	1	1.5
1-3	16	23.9
More than 3	39	58.2
1 - 5	19	28.4
6 - 10	13	19.4
11 - 20	14	20.9
More than 20	9	13.4

**PERCENTAGE SATISFACTORY (Levels 2 or 3)**

Grade	Year	White	African Amer	Hispanic	Econ Disadv	Special Educ	LEP	At Risk	Migrant	Male	Female	All	District	Number Tested (All Students)
6	2012												63.5	0
	2013	*	39.0	44.3	41.9	0.0	33.7	28.9		40.0	44.0	41.8	57.7	325
	2014	*	40.2	49.2	45.1	*	45.1	31.4		40.4	48.8	43.9	63.1	294
7	2012	*	51.0	58.7	56.6	25.0	34.9	44.0		54.4	60.0	56.9	67.5	360
	2013	*	57.1	65.7	60.9	20.0	57.6	45.2		58.5	63.2	60.7	67.3	295
	2014	*	33.1	38.3	35.0	9.1	27.6	28.3		33.1	38.2	35.7	60.5	300
8	2012	*	60.0	60.9	61.8	9.1	31.1	44.2		60.8	61.7	61.2	71.3	405
	2013	*	67.4	73.8	71.8	46.2	43.2	56.9		70.2	71.2	70.7	82.7	273
	2014	*	70.7	76.2	71.8	41.2	59.2	68.0		71.2	74.1	72.6	81.5	292
6-8	2012	*	55.8	59.8	59.4	15.8	33.2	44.1		57.6	60.9	59.2	67.4	765
	2013		75.0	53.2	60.6	57.1	22.5	42.5		55.2	58.9	56.9	68.6	893
	2014		42.9	47.8	54.2	50.3	25.8	40.6		48.1	53.4	50.6	68.2	886

NUMBER TESTED IN GRADES 6-8													
2012	3	215	535	677	57	196	449			399	366	765	29,211
2013	8	451	419	829	40	207	489			475	418	893	29,692
2014	7	483	389	827	31	229	675			472	414	886	30,015

**NUMBER UNSATISFACTORY (Level 1)**

Grade	Year	White	African Amer	Hispanic	Econ Disadv	Special Educ	LEP	At Risk	Migrant	Male	Female	All	District	Number Tested (All Students)
6	2012												3,673	0
	2013	*	105	83	180	12	69	135		105	84	189	4,523	325
	2014	*	101	60	156	*	45	142		102	63	165	3,679	294
7	2012	*	49	105	138	18	69	117		89	66	155	3,070	360
	2013	*	63	48	107	12	25	80		66	50	116	3,215	295
	2014	*	105	87	180	10	71	170		99	94	193	4,075	300
8	2012	*	46	110	137	30	62	134		80	77	157	2,786	405
	2013	*	43	34	69	7	25	66		42	38	80	1,586	273
	2014	*	46	31	75	10	20	74		44	36	80	1,797	292
6-8	2012	*	95	215	275	48	131	251		169	143	312	9,529	765
	2013	2	211	165	356	31	119	281		213	172	385	9,324	893
	2014	4	252	178	411	23	136	386		245	193	438	9,551	886

NUMBER TESTED IN GRADES 6-8													
2012	3	215	535	677	57	196	449			399	366	765	29,211
2013	8	451	419	829	40	207	489			475	418	893	29,692
2014	7	483	389	827	31	229	675			472	414	886	30,015

PERCENTAGE ADVANCED (Level 3)

Grade	Year	White	African Amer	Hispanic	Econ Disadv	Special Educ	LEP	At Risk	Migrant	Male	Female	All	District	Number Tested (All Students)
6	2012												8.3	0
	2013	*	5.8	3.4	3.9	0.0	1.0	1.1		5.1	4.0	4.6	11.3	325
	2014	*	1.8	0.0	1.1	*	0.0	0.0		0.0	2.4	1.0	7.1	294
7	2012	*	1.0	5.5	4.7	0.0	0.9	1.4		2.1	7.3	4.4	10.3	360
	2013	*	2.7	1.4	1.8	0.0	0.0	1.4		1.3	2.9	2.0	8.7	295
	2014	*	2.5	2.1	2.2	0.0	0.0	0.0		1.4	3.3	2.3	10.0	300
8	2012	*	9.6	6.0	6.7	0.0	0.0	2.1		6.4	8.0	7.2	9.9	405
	2013	*	1.5	3.8	2.0	0.0	2.3	0.7		1.4	4.5	2.9	15.5	273
	2014	*	2.5	6.9	4.5	0.0	0.0	2.6		3.9	5.0	4.5	13.1	292
6-8	2012	*	5.6	5.8	5.8	0.0	0.5	1.8		4.3	7.7	5.9	9.5	765
	2013	12.5	3.5	2.9	2.7	0.0	1.0	1.0		2.7	3.8	3.2	11.7	893
	2014	0.0	2.3	3.1	2.5	0.0	0.0	0.9		1.7	3.6	2.6	10.1	886

NUMBER TESTED IN GRADE 6-8													
2012	3	215	535	677	57	196	449		399	366	765	29,211	
2013	8	451	419	829	40	207	489		475	418	893	29,692	
2014	7	483	389	827	31	229	675		472	414	886	30,015	

## AVERAGE PERCENTAGE OF ITEMS CORRECT BY REPORTING CATEGORY

Grade	Year	REPORTING CATEGORY		
		1. Understanding Across Genres (GR 3-5) 1. Understanding/Analysis Across Genres (GR 6-8)	2. Understanding/Analysis of Literary Texts	3. Understanding/Analysis of Informational Texts
6	2012			
	2013	54.6	53.9	51.0
	2014	50.4	49.4	50.3
7	2012	63.2	53.9	55.6
	2013	54.3	53.1	60.1
	2014	48.8	46.4	44.9
8	2012	60.7	54.9	57.0
	2013	63.4	61.8	54.5
	2014	62.3	59.9	56.6
6-8	2012	61.9	54.5	56.4
	2013	57.2	56.1	55.1
	2014	53.8	51.8	50.5

**PERCENTAGE SATISFACTORY (Levels 2 or 3)**

Grade	Year	White	African Amer	Hispanic	Econ Disadv	Special Educ	LEP	At Risk	Migrant	Male	Female	All	District	Number Tested (All Students)
7	2012	*	42.7	47.2	46.4	16.7	21.3	29.6		41.8	52.7	46.8	59.2	363
	2013	*	34.7	36.4	35.3	0.0	22.0	16.8		31.7	38.8	34.9	57.1	295
	2014	*	37.1	38.7	36.7	28.6	24.5	28.9		33.1	42.8	38.1	54.6	294

NUMBER TESTED IN GRADE 7													
2012	1	103	254	321	24	108	213		196	167	363	9,456	
2013	3	147	140	275	17	59	143		161	134	295	9,785	
2014	1	151	142	275	7	98	235		142	152	294	10,339	

**NUMBER UNSATISFACTORY (Level 1)**

Grade	Year	White	African Amer	Hispanic	Econ Disadv	Special Educ	LEP	At Risk	Migrant	Male	Female	All	District	Number Tested (All Students)
7	2012	*	59	134	172	20	85	150		114	79	193	3,859	363
	2013	*	96	89	178	17	46	119		110	82	192	4,198	295
	2014	*	95	87	174	5	74	167		95	87	182	4,690	294

NUMBER TESTED IN GRADE 7													
2012	1	103	254	321	24	108	213		196	167	363	9,456	
2013	3	147	140	275	17	59	143		161	134	295	9,785	
2014	1	151	142	275	7	98	235		142	152	294	10,339	

PERCENTAGE ADVANCED (Level 3)

Grade	Year	White	African Amer	Hispanic	Econ Disadv	Special Educ	LEP	At Risk	Migrant	Male	Female	All	District	Number Tested (All Students)
7	2012	*	1.9	0.0	0.3	0.0	0.0	0.0		0.0	1.2	0.6	3.4	363
	2013	*	0.7	0.0	0.4	0.0	0.0	0.0		0.0	0.7	0.3	1.5	295
	2014	*	0.7	0.7	0.7	0.0	0.0	0.0		0.0	1.3	0.7	3.0	294

NUMBER TESTED IN GRADE 7													
2012	1	103	254	321	24	108	213		196	167	363	9,456	
2013	3	147	140	275	17	59	143		161	134	295	9,785	
2014	1	151	142	275	7	98	235		142	152	294	10,339	



**AVERAGE PERCENTAGE OF ITEMS CORRECT BY REPORTING CATEGORY**

Grade	Year	REPORTING CATEGORY			
		1. Composition <sup>1</sup> GR 4: Personal Narrative GR 7: Expository	1. Composition <sup>1</sup> GR 4: Expository GR 7: Personal Narrative	2. Revision	3. Editing
7	2012	1.7	2.1	60.1	52.4
	2013	3.5	4.0	56.0	49.4
	2014	3.6	4.1	53.6	47.5

<sup>1</sup>Average score points (range 0-8). A STAAR composition is rated twice on a scale of 1 to 4, and the ratings are summed to determine score points for the composition. Score point scale: 0=Non-scorable; 2=Very Limited; 3=between Very Limited and Basic; 4=Basic; 5=between Basic and Satisfactory; 6=Satisfactory; 7=between Satisfactory and Accomplished; 8=Accomplished

**PERCENTAGE SATISFACTORY (Levels 2 or 3)**

Grade	Year	White	African Amer	Hispanic	Econ Disadv	Special Educ	LEP	At Risk	Migrant	Male	Female	All	District	Number Tested (All Students)
6	2012												66.4	0
	2013	*	34.3	39.5	35.9	8.3	31.4	23.3		34.1	38.7	36.2	60.6	323
	2014	*	37.7	49.1	42.8	*	52.0	36.3		43.6	41.3	42.7	64.3	286
7	2012	*	37.0	51.6	48.7	9.1	37.8	32.0		46.6	49.7	48.0	59.9	352
	2013	*	36.1	46.4	40.2	0.0	41.8	24.5		43.6	38.2	41.1	59.9	292
	2014	*	21.2	34.6	26.9	0.0	21.8	19.6		23.4	30.6	27.1	55.1	288
8	2012	*	34.0	52.6	47.2	15.6	33.7	34.7		48.3	47.1	47.7	51.9	331
	2013	*	37.4	45.4	41.6	50.0	48.5	32.8		47.0	35.6	41.7	74.0	216
	2014	*	37.1	59.0	47.2	20.0	59.0	44.0		52.0	40.9	46.8	73.2	237
6-8	2012	*	35.5	52.1	48.0	13.0	35.9	33.4		47.4	48.4	47.9	60.3	683
	2013		33.3	35.7	43.5	38.9	17.9	37.4		40.8	37.7	39.4	63.7	831
	2014		33.3	31.9	46.5	38.4	14.3	40.3		39.5	37.0	38.3	63.3	811

NUMBER TESTED IN GRADES 6-8													
2012	2	197	474	611	54	181	469			363	320	683	26,044
2013	6	434	382	777	39	190	469			444	387	831	26,676
2014	6	455	342	760	28	201	633			433	378	811	27,304

**NUMBER UNSATISFACTORY (Level 1)**

Grade	Year	White	African Amer	Hispanic	Econ Disadv	Special Educ	LEP	At Risk	Migrant	Male	Female	All	District	Number Tested (All Students)
6	2012							0					3,327	0
	2013	*	113	89	198	11	70	145		114	92	206	4,133	323
	2014	*	104	57	159	*	36	128		93	71	164	3,478	286
7	2012	*	63	119	160	20	61	140		101	82	183	3,705	352
	2013	*	94	74	162	15	32	108		88	84	172	3,851	292
	2014	*	123	85	196	9	68	181		108	102	210	4,536	288
8	2012	*	64	108	158	27	55	143		90	83	173	3,319	331
	2013	*	72	53	115	6	17	92		61	65	126	1,709	216
	2014	*	83	41	113	12	16	116		61	65	126	2,001	237
6-8	2012	*	127	227	318	47	116	283		191	165	356	10,351	683
	2013	4	279	216	475	32	119	345		263	241	504	9,693	831
	2014	4	310	183	468	24	120	425		262	238	500	10,015	811

NUMBER TESTED IN GRADES 6-8													
2012	2	197	474	611	54	181	469		363	320	683	26,044	
2013	6	434	382	777	39	190	469		444	387	831	26,676	
2014	6	455	342	760	28	201	633		433	378	811	27,304	

PERCENTAGE ADVANCED (Level 3)

Grade	Year	White	African Amer	Hispanic	Econ Disadv	Special Educ	LEP	At Risk	Migrant	Male	Female	All	District	Number Tested (All Students)
6	2012												9.8	0
	2013	*	0.6	1.4	0.6	0.0	1.0	0.5		1.2	0.7	0.9	8.5	323
	2014	*	1.8	0.0	1.1	*	0.0	0.0		0.6	1.7	1.0	9.6	286
7	2012	*	0.0	2.0	1.9	0.0	0.0	0.0		1.6	1.8	1.7	6.3	352
	2013	*	0.0	0.0	0.0	0.0	0.0	0.0		0.0	0.0	0.0	4.8	292
	2014	*	0.0	0.8	0.4	0.0	0.0	0.0		0.0	0.7	0.3	6.7	288
8	2012	*	0.0	0.4	0.3	0.0	0.0	0.0		0.6	0.0	0.3	0.4	331
	2013	*	0.0	0.0	0.0	0.0	0.0	0.0		0.0	0.0	0.0	0.9	216
	2014	*	0.0	0.0	0.0	0.0	0.0	0.0		0.0	0.0	0.0	1.0	237
6-8	2012	*	0.0	1.3	1.1	0.0	0.0	0.0		1.1	0.9	1.0	6.1	683
	2013	0.0	0.2	0.5	0.3	0.0	0.5	0.2		0.5	0.3	0.4	5.3	831
	2014	0.0	0.7	0.3	0.5	0.0	0.0	0.0		0.2	0.8	0.5	6.2	811

NUMBER TESTED IN GRADE 6-8													
2012	2	197	474	611	54	181	425			363	320	683	26,044
2013	6	434	382	777	39	190	469			444	387	831	26,676
2014	6	455	342	760	28	201	633			433	378	811	27,304

## AVERAGE PERCENTAGE OF ITEMS CORRECT BY REPORTING CATEGORY

Grade	Year	REPORTING CATEGORY				
		1. Numbers, Operations, and Quantitative Reasoning	2. Patterns, Relationships, and Algebraic Reasoning	3. Geometry and Spatial Reasoning	4. Measurement	5. Probability and Statistics
6	2012					
	2013	41.5	44.4	34.9	30.8	40.1
	2014	44.0	37.8	41.3	35.6	42.8
7	2012	42.9	45.8	45.8	35.2	42.5
	2013	38.0	44.3	46.6	28.2	37.8
	2014	43.5	37.7	34.9	33.4	36.9
8	2012	45.2	39.6	36.8	37.1	41.9
	2013	38.6	41.3	37.7	35.3	34.7
	2014	38.4	39.8	34.1	34.2	45.7
6-8	2012	44.0	42.8	41.4	36.1	42.2
	2013	39.5	43.6	39.7	31.1	37.9
	2014	42.2	38.3	36.9	34.4	41.6

## PERCENTAGE SATISFACTORY (Levels 2 or 3)

Test	Year	White	African Amer	Hispanic	Econ Disadv	Special Educ	LEP	At Risk	Migrant	Male	Female	All	District
<b>ALGEBRA I (GRADE 8)</b>	<b>2012</b>	*	93.8	94.0	94.6		*	88.9		96.4	92.7	94.2	94.1
	<b>2013</b>	*	86.4	58.6	72.3	*	*	53.8		52.4	84.8	72.2	95.4
	<b>2014</b>	*	69.6	92.9	80.4		*	77.8		72.0	92.6	82.7	97.2
Tests Taken	<b>2012</b>	1	16	50	56		3	13		28	41	69	2,554
	<b>2013</b>	1	22	29	47	1	5	13		21	33	54	2,474
	<b>2014</b>	1	23	28	46		5	18		25	27	52	2,117

## NUMBER UNSATISFACTORY (Level 1)

Test	Year	White	African Amer	Hispanic	Econ Disadv	Special Educ	LEP	At Risk	Migrant	Male	Female	All	District
<b>ALGEBRA I (GRADE 8)</b>	<b>2012</b>	*	1	3	3		*	2		1	3	4	151
	<b>2013</b>	*	3	12	13	*	*	6		10	5	15	115
	<b>2014</b>	*	7	2	9		*	4		7	2	9	60
Tests Taken	<b>2012</b>	1	16	50	56		3	13		28	41	69	2,554
	<b>2013</b>	1	22	29	47	1	5	13		21	33	54	2,474
	<b>2014</b>	1	23	28	46		5	18		25	27	52	2,117

## PERCENTAGE ADVANCED (Level 3)

Test	Year	White	African Amer	Hispanic	Econ Disadv	Special Educ	LEP	At Risk	Migrant	Male	Female	All	District
<b>ALGEBRA I (GRADE 8)</b>	<b>2012</b>	*	12.5	16.0	16.1		*	0.0		17.9	12.2	14.5	19.0
	<b>2013</b>	*	4.5	3.4	4.3	*	*	0.0		4.8	3.0	3.7	24.2
	<b>2014</b>	*	0.0	0.0	0.0		*	0.0		0.0	0.0	0.0	28.8
Tests Taken	<b>2012</b>	1	16	50	56		3	18		28	41	69	2,554
	<b>2013</b>	1	22	29	47	1	5	13		21	33	54	2,474
	<b>2014</b>	1	23	28	46		5	18		25	27	52	2,117



## AVERAGE PERCENTAGE OF ITEMS CORRECT BY REPORTING CATEGORY

<b>ALGEBRA I (GRADE 8)</b>	1. Functional Relationships	2. Properties and Attributes of Functions	3. Linear Functions	4. Linear Equations and Inequalities	5. Quadratic and Other Nonlinear Functions
<b>2012</b>	60.3	58.9	60.7	50.6	61.7
<b>2013</b>	53.0	43.7	50.2	54.4	45.9
<b>2014</b>	44.0	42.1	49.4	55.2	46.6

**PERCENTAGE SATISFACTORY (Levels 2 or 3)**

Grade	Year	White	African Amer	Hispanic	Econ Disadv	Special Educ	LEP	At Risk	Migrant	Male	Female	All	District	Number Tested (All Students)
8	2012	*	30.2	33.3	33.1	0.0	10.7	18.5		36.0	30.8	33.4	54.0	401
	2013	*	41.0	53.6	47.2	25.0	44.7	33.8		52.9	41.9	47.4	65.8	274
	2014	*	27.7	43.4	33.9	9.5	33.3	27.5		39.2	30.0	34.7	61.9	288

NUMBER TESTED IN GRADE 8													
2012	2	116	276	359	34	84	238		200	201	401	9,431	
2013	3	144	125	246	16	38	151		138	136	274	8,998	
2014	2	155	129	257	21	45	222		148	140	288	9,466	

**NUMBER UNSATISFACTORY (Level 1)**

Grade	Year	White	African Amer	Hispanic	Econ Disadv	Special Educ	LEP	At Risk	Migrant	Male	Female	All	District	Number Tested (All Students)
8	2012	*	81	184	240	34	75	194		128	139	267	4335	401
	2013	*	85	58	130	12	21	100		65	79	144	3074	274
	2014	*	112	73	170	19	30	161		90	98	188	3605	288

NUMBER TESTED IN GRADE 8													
2012	2	116	276	359	34	84	238		200	201	401	9,431	
2013	3	144	125	246	16	38	151		138	136	274	8,998	
2014	2	155	129	257	21	45	222		148	140	288	9,466	

**PERCENTAGE ADVANCED (Level 3)**

Grade	Year	White	African Amer	Hispanic	Econ Disadv	Special Educ	LEP	At Risk	Migrant	Male	Female	All	District	Number Tested (All Students)
8	2012	*	1.7	1.1	1.1	0.0	0.0	0.0		1.0	1.5	1.2	4.2	401
	2013	*	0.7	3.2	1.2	0.0	0.0	0.0		2.9	0.7	1.8	7.1	274
	2014	*	0.6	2.3	1.2	0.0	0.0	0.0		2.7	0.0	1.4	11.3	288

NUMBER TESTED IN GRADE 8													
2012	2	116	276	359	34	84	238		200	201	401	9,431	
2013	3	144	125	246	16	38	151		138	136	274	8,998	
2014	2	155	129	257	21	45	222		148	140	288	9,466	

## AVERAGE PERCENTAGE OF ITEMS CORRECT BY REPORTING CATEGORY

Grade	Year	REPORTING CATEGORY			
		1. Matter and Energy	2. Force, Motion, and Energy	3. Earth and Space	4. Organisms and Environments
8	2012	45.6	49.8	45.4	50.4
	2013	57.4	48.7	47.2	53.7
	2014	44.8	46.5	42.5	60.0

**PERCENTAGE SATISFACTORY (Levels 2 or 3)**

Grade	Year	White	African Amer	Hispanic	Econ Disadv	Special Educ	LEP	At Risk	Migrant	Male	Female	All	District	Number Tested (All Students)
8	2012	*	28.2	38.9	36.8	12.1	22.9	22.7		42.8	29.5	36.2	52.5	401
	2013	*	31.5	38.4	34.8	6.3	21.1	16.4		37.5	33.8	35.7	59.3	272
	2014	*	17.9	37.5	26.7	15.8	29.5	24.0		30.9	22.3	26.7	53.5	288

NUMBER TESTED IN GRADE 8													
2012	2	117	275	359	33	83	238		201	200	401	9,392	
2013	2	143	125	244	16	38	152		136	136	272	8,991	
2014	2	156	128	258	19	44	221		149	139	288	9,464	

## NUMBER UNSATISFACTORY (Level 1)

Grade	Year	White	African Amer	Hispanic	Econ Disadv	Special Educ	LEP	At Risk	Migrant	Male	Female	All	District	Number Tested (All Students)
8	2012	*	84	168	227	29	64	184		115	141	256	4462	401
	2013	*	98	77	159	15	30	127		85	90	175	3656	272
	2014	*	128	80	189	16	31	168		103	108	211	4402	288

NUMBER TESTED IN GRADE8													
2012	2	117	275	359	33	83	238		201	200	401	9,392	
2013	2	143	125	244	16	38	152		136	136	272	8,991	
2014	2	156	128	258	19	44	221		149	139	288	9,464	

**PERCENTAGE ADVANCED (Level 3)**

Grade	Year	White	African Amer	Hispanic	Econ Disadv	Special Educ	LEP	At Risk	Migrant	Male	Female	All	District	Number Tested (All Students)
8	2012	*	0.9	2.5	2.5	0.0	0.0	0.8		2.0	3.0	2.5	7.1	401
	2013	*	2.1	1.6	1.2	0.0	0.0	0.0		2.9	1.5	2.2	8.8	272
	2014	*	0.6	0.0	0.4	0.0	0.0	0.0		0.7	0.0	0.3	7.3	288

NUMBER TESTED IN GRADE 8													
2012	2	117	275	359	33	83	238		201	200	401	9,392	
2013	2	143	125	244	16	38	152		136	136	272	8,991	
2014	2	156	128	258	19	44	221		149	139	288	9,464	



## AVERAGE PERCENTAGE OF ITEMS CORRECT BY REPORTING CATEGORY

Grade	Year	REPORTING CATEGORY			
		1. History	2. Geography and Culture	3. Government and Citizenship	4. Economics, Science, Technology, and Society
8	2012	43.2	45.5	44.2	39.3
	2013	49.3	47.8	38.7	39.6
	2014	43.7	35.2	40.8	42.9

**PERCENTAGE SATISFACTORY (Levels 2 or 3)**

Grade	Year	White	African Amer	Hispanic	Econ Disadv	Special Educ	LEP	At Risk	Migrant	Male	Female	All	District	Number Tested (All Students)
6	2012												22.8	0
	2013			*	*		*	*		*		*	30.6	2
	2014			22.2	33.3		22.2	22.2		*	*	22.2	29.0	9
7	2012			0.0	0.0		0.0	*		0.0	*	0.0	16.9	9
	2013	*		*	*		*	*		*		*	24.3	4
	2014			9.1	0.0		9.1	9.1		14.3	*	9.1	24.8	11
8	2012			*	*		*	*		*	*	*	0.0	4
	2013			*	0.0		0.0	0.0		*	*	0.0	25.5	6
	2014	*		*	*		*	*		*	*	*	33.2	4
6-8	2012			0.0	0.0		0.0	0.0		0.0	*	0.0	12.7	13
	2013	*		10.0	9.1		8.3	11.1		10.0	*	8.3	26.8	12
	2014	*		21.7	27.8		25.0	25.0		33.3	11.1	25.0	29.1	24

NUMBER TESTED IN GRADES 6-8													
2012			13	10		13	8		9	4	13	620	
2013	1		10	11		12	9		10	2	12	634	
2014	1		23	18		24	24		15	9	24	722	

**NUMBER UNSATISFACTORY (Level 1)**

Grade	Year	White	African Amer	Hispanic	Econ Disadv	Special Educ	LEP	At Risk	Migrant	Male	Female	All	District	Number Tested (All Students)
6	2012												146	0
	2013			*	*		*	*		*		*	150	2
	2014			7	4		7	7		*	*	7	171	9
7	2012			9	7		9	*		7	*	9	177	9
	2013	*		*	*		*	*		*		*	162	4
	2014			10	8		10	10		6	*	10	176	11
8	2012			*	*		*	*		*	*	*	218	4
	2013			*	6		6	6		*	*	6	152	6
	2014	*		*	*		*	*		*	*	*	165	4
6-8	2012			13	10		13	8		9	*	13	541	13
	2013	*		9	10		11	8		9	*	11	464	12
	2014	*		18	13		18	18		10	8	18	512	24

NUMBER TESTED IN GRADES 6-8													
2012			13	10		13	8		9	4	13	620	
2013	1		10	11		12	9		10	2	12	634	
2014	1		23	18		24	24		15	9	24	722	

PERCENTAGE ADVANCED (Level 3)

Grade	Year	White	African Amer	Hispanic	Econ Disadv	Special Educ	LEP	At Risk	Migrant	Male	Female	All	District	Number Tested (All Students)
6	2012												1.1	0
	2013			*	*		*	*		*		*	2.3	2
	2014			0.0	0.0		0.0	0.0		*	*	0.0	3.3	9
7	2012			0.0	0.0		0.0	*		0.0	*	0.0	0.0	9
	2013	*		*	*		*	*		*		*	0.9	4
	2014			0.0	0.0		0.0	0.0		0.0	*	0.0	0.0	11
8	2012			*	*		*	*		*	*	*	0.0	4
	2013			*	0.0		0.0	0.0		*	*	0.0	0.0	6
	2014	*		*	*		*	*		*	*	*	0.4	4
6-8	2012			0.0	0.0		0.0	0.0		0.0	*	0.0	0.3	13
	2013	*		0.0	0.0		0.0	0.0		0.0	*	0.0	1.1	12
	2014	*		0.0	0.0		0.0	0.0		0.0	0.0	0.0	1.2	24

NUMBER TESTED IN GRADE 6-8													
2012			13	10		13	8		9	4	13	620	
2013	1		10	11		12	9		10	2	12	634	
2014	1		23	18		24	24		15	9	24	722	

## AVERAGE PERCENTAGE OF ITEMS CORRECT BY REPORTING CATEGORY

Grade	Year	REPORTING CATEGORY				
		1. Numbers, Operations, and Quantitative Reasoning	2. Patterns, Relationships, and Algebraic Reasoning	3. Geometry and Spatial Reasoning	4. Measurement	5. Probability and Statistics
6	2012					
	2013	*	*	*	*	*
	2014	34.0	26.9	37.5	34.7	26.4
7	2012	16.2	19.7	28.9	23.6	24.4
	2013	*	*	*	*	*
	2014	30.8	30.1	30.9	35.2	32.7
8	2012	*	*	*	*	*
	2013	27.3	20.2	20.8	32.1	30.0
	2014	*	*	*	*	*
6-8	2012	21.7	21.9	25.8	27.6	22.3
	2013	32.3	30.5	31.7	35.8	28.8
	2014	32.5	29.8	35.5	38.8	31.1

**PERCENTAGE SATISFACTORY (Levels 2 or 3)**

Grade	Year	White	African Amer	Hispanic	Econ Disadv	Special Educ	LEP	At Risk	Migrant	Male	Female	All	District	Number Tested (All Students)
6	2012												65.5	0
	2013		36.0	33.3	36.7	35.5	*	37.0		38.1	30.0	35.5	55.9	31
	2014		40.0	42.9	38.1	40.9	50.0	38.1		41.2	*	40.9	51.6	22
7	2012		*	42.9	25.0	25.0	*	27.3		27.3	*	25.0	57.3	12
	2013		42.1	46.2	40.6	41.2	40.0	38.7		52.2	18.2	41.2	61.0	34
	2014		52.6	*	40.9	43.5	*	40.9		53.8	30.0	43.5	55.4	23
8	2012		*	0.0	9.1	9.1	0.0	10.0		16.7	*	9.1	58.0	11
	2013		58.3	71.4	63.2	63.2	*	61.1		50.0	85.7	63.2	74.5	19
	2014		72.7	64.3	70.0	67.6	55.6	64.5		76.0	50.0	67.6	75.0	37
6-8	2012		11.1	23.1	17.4	17.4	9.1	19.0		23.5	0.0	17.4	60.3	23
	2013		42.9	50.0	44.4	44.0	45.0	43.4		46.4	39.3	44.0	63.6	84
	2014		57.1	48.0	52.1	53.7	42.1	50.0		60.0	40.7	53.7	60.0	82

NUMBER TESTED IN GRADES 6-8													
2012		9	13	23	23	11	21		17	6	23	1,571	
2013		56	26	81	84	20	76		56	28	84	1,687	
2014		56	25	73	82	19	74		55	27	82	1,689	

**NUMBER UNSATISFACTORY (Level 1)**

Grade	Year	White	African Amer	Hispanic	Econ Disadv	Special Educ	LEP	At Risk	Migrant	Male	Female	All	District	Number Tested (All Students)
6	2012												181	0
	2013		16	4	19	20	*	17		13	7	20	270	31
	2014		9	4	13	13	3	13		10	*	13	281	22
7	2012		*	4	9	9	*	8		8	*	9	244	12
	2013		11	7	19	20	6	19		11	9	20	202	34
	2014		9	*	13	13	*	13		6	7	13	266	23
8	2012		*	6	10	10	6	9		5	*	10	199	11
	2013		5	2	7	7	*	7		6	1	7	142	19
	2014		6	5	9	12	4	11		6	6	12	128	37
6-8	2012		8	10	19	19	10	17		13	6	19	624	23
	2013		32	13	45	47	11	43		30	17	47	614	84
	2014		24	13	35	38	11	37		22	16	38	675	82

NUMBER TESTED IN GRADES 6-8													
2012		9	13	23	23	11	21			17	6	23	1,571
2013		56	26	81	84	20	76			56	28	84	1,687
2014		56	25	73	82	19	74			55	27	82	1,689

PERCENTAGE ADVANCED (Level 3)

Grade	Year	White	African Amer	Hispanic	Econ Disadv	Special Educ	LEP	At Risk	Migrant	Male	Female	All	District	Number Tested (All Students)
6	2012												3.6	0
	2013		0.0	0.0	0.0	0.0	*	0.0		0.0	0.0	0.0	3.1	31
	2014		0.0	0.0	0.0	0.0	0.0	0.0		0.0	*	0.0	2.9	22
7	2012		*	0.0	0.0	0.0	*	0.0		0.0	*	0.0	1.0	12
	2013		0.0	0.0	0.0	0.0	0.0	0.0		0.0	0.0	0.0	3.5	34
	2014		5.3	*	4.5	4.3	*	4.5		7.7	0.0	4.3	3.9	23
8	2012		*	0.0	0.0	0.0	0.0	0.0		0.0	*	0.0	1.1	11
	2013		0.0	14.3	5.3	5.3	*	5.6		0.0	14.3	5.3	2.5	19
	2014		0.0	0.0	0.0	0.0	0.0	0.0		0.0	0.0	0.0	2.9	37
6-8	2012		0.0	0.0	0.0	0.0	0.0	0.0		0.0	0.0	0.0	1.9	23
	2013		0.0	3.8	1.2	1.2	5.0	1.3		0.0	3.6	1.2	3.0	84
	2014		1.8	0.0	1.4	1.2	0.0	1.4		1.8	0.0	1.2	3.3	82

NUMBER TESTED IN GRADE 6-8													
2012		9	13	23	23	11	21			17	6	23	1,571
2013		56	26	81	84	20	76			56	28	84	1,687
2014		56	25	73	82	19	74			55	27	82	1,689



## AVERAGE PERCENTAGE OF ITEMS CORRECT BY REPORTING CATEGORY

Grade	Year	REPORTING CATEGORY		
		1. Understanding Across Genres (GR 3-5) 1. Understanding/Analysis Across Genres (GR 6-8)	2. Understanding/Analysis of Literary Texts	3. Understanding/Analysis of Informational Texts
6	2012			
	2013	45.6	46.8	47.9
	2014	47.7	50.9	45.8
7	2012	44.8	40.2	39.4
	2013	45.6	45.8	41.0
	2014	44.6	51.2	46.7
8	2012	30.7	40.9	34.1
	2013	61.8	56.4	51.3
	2014	62.5	58.1	47.6
6-8	2012	38.0	40.5	36.9
	2013	49.3	48.6	45.9
	2014	53.5	54.2	46.9

**PERCENTAGE SATISFACTORY (Levels 2 or 3)**

Grade	Year	White	African Amer	Hispanic	Econ Disadv	Special Educ	LEP	At Risk	Migrant	Male	Female	All	District	Number Tested (All Students)
7	2012		*	57.1	41.7	41.7	*	45.5		45.5	*	41.7	56.7	12
	2013		44.4	18.2	34.5	35.5	22.2	34.5		35.0	36.4	35.5	63.7	31
	2014		64.7	*	52.6	52.4	*	50.0		53.8	50.0	52.4	62.9	21

NUMBER TESTED IN GRADE 7													
2012		5	7	12	12	5	11		11	1	12	586	
2013		18	11	29	31	9	29		20	11	31	509	
2014		17	4	19	21	4	18		13	8	21	599	

**NUMBER UNSATISFACTORY (Level 1)**

Grade	Year	White	African Amer	Hispanic	Econ Disadv	Special Educ	LEP	At Risk	Migrant	Male	Female	All	District	Number Tested (All Students)
7	2012		*	3	7	7	*	6		6	*	7	254	12
	2013		10	9	19	20	7	19		13	7	20	185	31
	2014		6	*	9	10	*	9		6	4	10	222	21

NUMBER TESTED IN GRADE 7													
2012		5	7	12	12	5	11		11	1	12	586	
2013		18	11	29	31	9	29		20	11	31	509	
2014		17	4	19	21	4	18		13	8	21	599	

**PERCENTAGE ADVANCED (Level 3)**

Grade	Year	White	African Amer	Hispanic	Econ Disadv	Special Educ	LEP	At Risk	Migrant	Male	Female	All	District	Number Tested (All Students)
7	2012		*	0.0	0.0	0.0	*	0.0		0.0	*	0.0	2.7	12
	2013		0.0	0.0	0.0	0.0	0.0	0.0		0.0	0.0	0.0	6.3	31
	2014		11.8	*	10.5	9.5	*	11.1		15.4	0.0	9.5	6.3	21

NUMBER TESTED IN GRADE 7													
2012		5	7	12	12	5	11		11	1	12	586	
2013		18	11	29	31	9	29		20	11	31	509	
2014		17	4	19	21	4	18		13	8	21	599	

## AVERAGE PERCENTAGE OF ITEMS CORRECT BY REPORTING CATEGORY

Grade	Year	REPORTING CATEGORY		
		1. Composition <sup>1</sup> GR 4: Personal Narrative GR 7: Expository	2. Revision	3. Editing
7	2012	0.9	37.8	44.3
	2013	1.6	45.9	45.0
	2014	2.2	53.1	42.1

<sup>1</sup>Average score points (range 0-6). A STAAR M composition is rated twice on a scale of 0 to 3, and the ratings are summed to determine score points for the composition. Score point scale: 0=Non-scorable; 2=Very Limited; 3=between Very Limited and Basic; 4=Basic; 5=between Basic and Satisfactory; 6=Satisfactory

**PERCENTAGE SATISFACTORY (Levels 2 or 3)**

Grade	Year	White	African Amer	Hispanic	Econ Disadv	Special Educ	LEP	At Risk	Migrant	Male	Female	All	District	Number Tested (All Students)
6	2012												46.2	0
	2013		32.0	66.7	40.0	38.7	*	40.7		52.4	10.0	38.7	54.3	31
	2014		28.6	71.4	45.0	42.9	66.7	45.0		37.5	*	42.9	52.0	21
7	2012		*	50.0	27.3	27.3	*	33.3		22.2	*	27.3	50.5	11
	2013		20.0	33.3	21.9	23.5	40.0	25.0		9.1	50.0	23.5	49.4	34
	2014		30.0	*	29.2	32.0	*	33.3		50.0	9.1	32.0	48.8	25
8	2012		33.3	16.7	30.8	30.8	16.7	25.0		57.1	0.0	30.8	46.2	13
	2013		50.0	42.9	47.4	47.4	*	44.4		41.7	57.1	47.4	71.4	19
	2014		45.5	50.0	50.0	48.6	55.6	51.5		48.0	50.0	48.6	71.0	37
6-8	2012		18.2	33.3	29.2	29.2	40.0	28.6		37.5	12.5	29.2	47.7	24
	2013		31.6	44.0	34.6	34.5	50.0	35.1		32.7	37.9	34.5	58.5	84
	2014		35.7	53.8	41.9	42.2	55.0	44.2		45.5	35.7	42.2	56.7	83

NUMBER TESTED IN GRADES 6-8													
2012		11	12	24	24	10	21		16	8	24	1,554	
2013		57	25	81	84	20	77		55	29	84	1,659	
2014		56	26	74	83	20	77		55	28	83	1,684	

**NUMBER UNSATISFACTORY (Level 1)**

Grade	Year	White	African Amer	Hispanic	Econ Disadv	Special Educ	LEP	At Risk	Migrant	Male	Female	All	District	Number Tested (All Students)
6	2012												276	0
	2013		17	2	18	19	*	16		10	9	19	272	31
	2014		10	2	11	12	2	11		10	*	12	271	21
7	2012		*	3	8	8	*	6		7	*	8	276	11
	2013		16	8	25	26	6	24		20	6	26	257	34
	2014		14	*	17	17	*	16		7	10	17	310	25
8	2012		4	5	9	9	5	9		3	6	9	260	13
	2013		6	4	10	10	*	10		7	3	10	159	19
	2014		12	7	15	19	4	16		13	6	19	149	37
6-8	2012		9	8	17	17	6	15		10	7	17	812	24
	2013		39	14	53	55	10	50		37	18	55	688	84
	2014		36	12	43	48	9	43		30	18	48	730	83

NUMBER TESTED IN GRADES 6-8													
2012		11	12	24	24	10	21		16	8	24	1,554	
2013		57	25	81	84	20	77		55	29	84	1,659	
2014		56	26	74	83	20	77		55	28	83	1,684	

PERCENTAGE ADVANCED (Level 3)

Grade	Year	White	African Amer	Hispanic	Econ Disadv	Special Educ	LEP	At Risk	Migrant	Male	Female	All	District	Number Tested (All Students)
6	2012												5.5	0
	2013		0.0	0.0	0.0	0.0	*	0.0		0.0	0.0	0.0	4.9	31
	2014		0.0	0.0	0.0	0.0	0.0	0.0		0.0	*	0.0	3.4	21
7	2012		*	0.0	0.0	0.0	*	0.0		0.0	*	0.0	1.1	11
	2013		0.0	0.0	0.0	0.0	0.0	0.0		0.0	0.0	0.0	3.0	34
	2014		0.0	*	0.0	0.0	*	0.0		0.0	0.0	0.0	2.3	25
8	2012		0.0	0.0	0.0	0.0	0.0	0.0		0.0	0.0	0.0	1.2	13
	2013		0.0	0.0	0.0	0.0	*	0.0		0.0	0.0	0.0	2.2	19
	2014		0.0	7.1	0.0	2.7	11.1	3.0		4.0	0.0	2.7	1.9	37
6-8	2012		0.0	0.0	0.0	0.0	0.0	0.0		0.0	0.0	0.0	2.6	24
	2013		0.0	0.0	0.0	0.0	0.0	0.0		0.0	0.0	0.0	3.4	84
	2014		0.0	3.8	0.0	1.2	5.0	1.3		1.8	0.0	1.2	2.6	83

NUMBER TESTED IN GRADE 6-8													
2012		11	12	24	24	10	21			16	8	24	1,554
2013		57	25	81	84	20	77			55	29	84	1,659
2014		56	26	74	83	20	77			55	28	83	1,684



## AVERAGE PERCENTAGE OF ITEMS CORRECT BY REPORTING CATEGORY

Grade	Year	REPORTING CATEGORY				
		1. Numbers, Operations, and Quantitative Reasoning	2. Patterns, Relationships, and Algebraic Reasoning	3. Geometry and Spatial Reasoning	4. Measurement	5. Probability and Statistics
6	2012					
	2013	41.9	40.3	45.2	37.1	49.5
	2014	49.0	43.3	50.8	30.2	54.8
7	2012	27.3	27.3	31.8	28.8	37.5
	2013	35.8	37.1	42.6	32.8	40.1
	2014	40.4	38.4	44.0	46.7	35.5
8	2012	30.8	35.7	34.6	41.5	31.7
	2013	42.1	41.6	35.1	41.6	44.1
	2014	41.9	49.9	38.3	41.4	51.4
6-8	2012	29.2	31.8	33.3	35.7	34.4
	2013	39.5	39.3	41.9	36.4	44.4
	2014	43.2	44.8	43.2	40.1	47.4

**PERCENTAGE SATISFACTORY (Levels 2 or 3)**

Grade	Year	White	African Amer	Hispanic	Econ Disadv	Special Educ	LEP	At Risk	Migrant	Male	Female	All	District	Number Tested (All Students)
8	2012		*	16.7	27.3	27.3	16.7	30.0		33.3	*	27.3	58.2	11
	2013		63.6	57.1	61.1	61.1	*	58.8		45.5	85.7	61.1	59.3	18
	2014		40.0	41.7	38.1	39.3	42.9	33.3		45.0	25.0	39.3	63.5	28

NUMBER TESTED IN GRADE 8													
2012		4	6	11	11	6	10		6	5	11	457	
2013		11	7	18	18	5	17		11	7	18	526	
2014		15	12	21	28	7	24		20	8	28	474	

**NUMBER UNSATISFACTORY (Level 1)**

Grade	Year	White	African Amer	Hispanic	Econ Disadv	Special Educ	LEP	At Risk	Migrant	Male	Female	All	District	Number Tested (All Students)
8	2012		*	5	8	8	5	7		4	*	8	191	11
	2013		4	3	7	7	*	7		6	1	7	214	18
	2014		9	7	13	17	4	16		11	6	17	173	28

NUMBER TESTED IN GRADE 8													
2012		4	6	11	11	6	10		6	5	11	457	
2013		11	7	18	18	5	17		11	7	18	526	
2014		15	12	21	28	7	24		20	8	28	474	

**PERCENTAGE ADVANCED (Level 3)**

Grade	Year	White	African Amer	Hispanic	Econ Disadv	Special Educ	LEP	At Risk	Migrant	Male	Female	All	District	Number Tested (All Students)
8	2012		*	0.0	0.0	0.0	0.0	0.0		0.0	*	0.0	0.4	11
	2013		0.0	0.0	0.0	0.0	*	0.0		0.0	0.0	0.0	2.5	18
	2014		0.0	0.0	0.0	0.0	0.0	0.0		0.0	0.0	0.0	3.8	28

NUMBER TESTED IN GRADE 8													
2012		4	6	11	11	6	10		6	5	11	457	
2013		11	7	18	18	5	17		11	7	18	526	
2014		15	12	21	28	7	24		20	8	28	474	

## AVERAGE PERCENTAGE OF ITEMS CORRECT BY REPORTING CATEGORY

Grade	Year	REPORTING CATEGORY			
		1. Matter and Energy	2. Force, Motion, and Energy	3. Earth and Space	4. Organisms and Environments
8	2012	57.0	49.1	36.4	34.7
	2013	61.1	66.7	50.0	51.0
	2014	51.9	53.9	53.6	47.4

**PERCENTAGE SATISFACTORY (Levels 2 or 3)**

Grade	Year	White	African Amer	Hispanic	Econ Disadv	Special Educ	LEP	At Risk	Migrant	Male	Female	All	District	Number Tested (All Students)
8	2012		*	0.0	18.2	18.2	0.0	20.0		33.3	*	18.2	52.3	11
	2013		40.0	42.9	41.2	41.2	*	37.5		27.3	66.7	41.2	59.5	17
	2014		43.8	15.4	22.7	30.0	12.5	23.1		38.1	11.1	30.0	59.3	30

NUMBER TESTED IN GRADE 8													
2012		4	6	11	11	6	10		6	5	11	451	
2013		10	7	17	17	5	16		11	6	17	516	
2014		16	13	22	30	8	26		21	9	30	479	

**NUMBER UNSATISFACTORY (Level 1)**

Grade	Year	White	African Amer	Hispanic	Econ Disadv	Special Educ	LEP	At Risk	Migrant	Male	Female	All	District	Number Tested (All Students)
8	2012		*	6	9	9	6	8		4	*	9	215	11
	2013		6	4	10	10	*	10		8	2	10	209	17
	2014		9	11	17	21	7	20		13	8	21	195	30

NUMBER TESTED IN GRADE8													
2012		4	6	11	11	6	10		6	5	11	451	
2013		10	7	17	17	5	16		11	6	17	516	
2014		16	13	22	30	8	26		21	9	30	479	

**PERCENTAGE ADVANCED (Level 3)**

Grade	Year	White	African Amer	Hispanic	Econ Disadv	Special Educ	LEP	At Risk	Migrant	Male	Female	All	District	Number Tested (All Students)
8	2012		*	0.0	0.0	0.0	0.0	0.0		0.0	*	0.0	2.9	11
	2013		0.0	0.0	0.0	0.0	*	0.0		0.0	0.0	0.0	1.9	17
	2014		0.0	0.0	0.0	0.0	0.0	0.0		0.0	0.0	0.0	3.5	30

NUMBER TESTED IN GRADE 8													
2012		4	6	11	11	6	10		6	5	11	451	
2013		10	7	17	17	5	16		11	6	17	516	
2014		16	13	22	30	8	26		21	9	30	479	



## AVERAGE PERCENTAGE OF ITEMS CORRECT BY REPORTING CATEGORY

Grade	Year	REPORTING CATEGORY			
		1. History	2. Geography and Culture	3. Government and Citizenship	4. Economics, Science, Technology, and Society
8	2012	43.8	46.4	38.2	40.9
	2013	43.4	54.1	43.5	57.8
	2014	41.0	47.0	44.0	51.1

## PERCENTAGE DEMONSTRATING IMPROVEMENT


Grade	Level 1 in 2013		Level 2 in 2013		Level 3 in 2013		Levels 1-3 in 2013	
	Number Tested Both Years	Percentage Improved in 2014	Number Tested Both Years	Percentage Improved in 2014	Number Tested Both Years	Percentage Improved in 2014	Number Tested Both Years	Percentage Improved in 2014
6	5	*	1	*	0		6	50.0
7	4	*	4	*	0		8	25.0
8	0		7	14.3	0		7	14.3
ALL	9	33.3	12	25.0	0		21	28.6

**PERFORMANCE IN 2014**

Grade 2013-14 (N Rated)	Domain:	Listening		Speaking		Writing		Reading		Composite	
	2014 Level	N	%	N	%	N	%	N	%	N	%
6 (87)	Beginning	7	8.0	9	10.3	13	15.1	15	17.6	9	10.7
	Intermediate	30	34.5	32	36.8	38	44.2	24	28.2	23	27.4
	Advanced	26	29.9	29	33.3	23	26.7	34	40.0	42	50.0
	Advanced High	24	27.6	17	19.5	12	14.0	12	14.1	10	11.9
7 (98)	Beginning	1	1.0	1	1.0	2	2.1	12	12.4	2	2.1
	Intermediate	14	14.3	14	14.3	19	19.8	28	28.9	16	16.7
	Advanced	34	34.7	38	38.8	22	22.9	43	44.3	49	51.0
	Advanced High	49	50.0	45	45.9	53	55.2	14	14.4	29	30.2
8 (55)	Beginning	0	0.0	0	0.0	1	1.9	5	9.4	1	1.9
	Intermediate	13	23.6	14	25.5	13	24.1	12	22.6	10	19.2
	Advanced	25	45.5	24	43.6	28	51.9	28	52.8	26	50.0
	Advanced High	17	30.9	17	30.9	12	22.2	8	15.1	15	28.8
ALL (240)	Beginning	8	3.3	10	4.2	16	6.8	32	13.6	12	5.2
	Intermediate	57	23.8	60	25.0	70	29.7	64	27.2	49	21.1
	Advanced	85	35.4	91	37.9	73	30.9	105	44.7	117	50.4
	Advanced High	90	37.5	79	32.9	77	32.6	34	14.5	54	23.3

**PROGRESSION FROM  
2013 TO 2014**

Number Rated Both Years N (%) Progressed	2014 Level	2013 Level			
		Beg	Int	Adv	Adv High
76 10 (13.2%)	Beginning	5			
	Intermediate	0	21		
	Advanced	0	1	40	
	Advanced High	0	0	9	
83 45 (54.2%)	Beginning	2			
	Intermediate	3	8		
	Advanced	1	13	28	
	Advanced High	0	2	26	
45 16 (35.6%)	Beginning	0			
	Intermediate	1	7		
	Advanced	0	2	22	
	Advanced High	0	0	13	
204 71 (34.8%)	Beginning	7			
	Intermediate	4	36		
	Advanced	1	16	90	
	Advanced High	0	2	48	

 Indicates students who progressed at least one level from 2013 to 2014.

**SEMESTER 1 TESTS**

Number Tested	Averages				% Passing		District % Passing	
	% Items Correct	Scale Score	Course Mark	Course Mark (no ACP)	ACP	Course	ACP	Course

**ALGEBRA I PRE-AP**

57	45.1	63.4	80.6	82.5	28.1	100.0	65.2	96.3
----	------	------	------	------	------	-------	------	------

**ART 7**

53	52.8	68.6	83.7	85.4	56.6	90.6	76.4	97.8
----	------	------	------	------	------	------	------	------

**BEGINNING LANGUAGE ARTS 6 FOR ESL**

9	33.3	66.7	79.9	81.4	33.3	100.0	45.0	94.8
---	------	------	------	------	------	-------	------	------

**BEGINNING LANGUAGE ARTS 7 FOR ESL**

5	*	*	*	*	*	*	39.3	*
---	---	---	---	---	---	---	------	---

**BEGINNING LANGUAGE ARTS 8 FOR ESL**

1	*	*	*	*	*	*	40.7	*
---	---	---	---	---	---	---	------	---

**BEGINNING READING 6 FOR ESL**

--	--	--	--	--	--	--	--	--

**INTERMEDIATE LANGUAGE ARTS 7 FOR ESL**

2	*	*	*	*	*	*	59.0	*
---	---	---	---	---	---	---	------	---

**INTERMEDIATE LANGUAGE ARTS 8 FOR ESL**

4	*	*	*	*	*	*	40.0	*
---	---	---	---	---	---	---	------	---

**INTERMEDIATE READING 6 FOR ESL**

11	34.2	62.8	80.7	82.7	9.1	100.0	54.7	94.9
----	------	------	------	------	-----	-------	------	------

**LANGUAGE ARTS 6**

258	46.6	68.0	79.1	80.3	43.0	89.9	51.1	88.5
-----	------	------	------	------	------	------	------	------

**LANGUAGE ARTS 6 PRE-AP**

39	61.2	70.9	84.3	85.7	64.1	94.9	79.1	98.0
----	------	------	------	------	------	------	------	------

**SEMESTER 2 TESTS**

Number Tested	Averages				% Passing		District % Passing	
	% Items Correct	Scale Score	Course Mark	Course Mark (no ACP)	ACP	Course	ACP	Course

**ALGEBRA I PRE-AP**

--	--	--	--	--	--	--	--	--

**ART 7**

47		69.1	87.0	89.0	57.4	93.6	71.9	95.8
----	--	------	------	------	------	------	------	------

**BEGINNING LANGUAGE ARTS 6 FOR ESL**

7	26.5	62.6	80.6	82.6	0.0	100.0	34.2	96.4
---	------	------	------	------	-----	-------	------	------

**BEGINNING LANGUAGE ARTS 7 FOR ESL**

8	35.8	67.9	80.4	81.8	25.0	100.0	45.1	95.5
---	------	------	------	------	------	-------	------	------

**BEGINNING LANGUAGE ARTS 8 FOR ESL**

--	--	--	--	--	--	--	--	--

**BEGINNING READING 6 FOR ESL**

10	35.6	67.2	82.3	84.0	20.0	100.0	44.4	96.6
----	------	------	------	------	------	-------	------	------

**INTERMEDIATE LANGUAGE ARTS 7 FOR ESL**

2	*	*	*	*	*	*	62.9	*
---	---	---	---	---	---	---	------	---

**INTERMEDIATE LANGUAGE ARTS 8 FOR ESL**

3	*	*	*	*	*	*	61.5	*
---	---	---	---	---	---	---	------	---

**INTERMEDIATE READING 6 FOR ESL**

1	*	*	*	*	*	*	56.2	*
---	---	---	---	---	---	---	------	---

**LANGUAGE ARTS 6**

253	47.4	67.8	78.4	79.6	45.1	85.8	56.8	85.3
-----	------	------	------	------	------	------	------	------

**LANGUAGE ARTS 6 PRE-AP**

32	51.7	69.2	83.9	85.5	50.0	93.8	64.3	96.1
----	------	------	------	------	------	------	------	------

**SEMESTER 1 TESTS**

Number Tested	Averages				% Passing		District % Passing	
	% Items Correct	Scale Score	Course Mark	Course Mark (no ACP)	ACP	Course	ACP	Course

**LANGUAGE ARTS 7**

264	39.9	67.8	77.0	78.0	39.8	87.0	52.3	86.0
-----	------	------	------	------	------	------	------	------

**LANGUAGE ARTS 7 PRE-AP**

53	53.1	68.7	82.4	83.9	43.4	94.3	72.1	96.8
----	------	------	------	------	------	------	------	------

**LANGUAGE ARTS 8**

222	52.5	69.0	76.5	77.3	47.7	86.9	56.7	87.7
-----	------	------	------	------	------	------	------	------

**LANGUAGE ARTS 8 PRE-AP**

63	61.3	71.7	82.9	84.1	68.3	96.8	76.4	97.3
----	------	------	------	------	------	------	------	------

**MATHEMATICS 6**

268	28.7	67.1	78.1	79.3	28.0	86.2	45.6	86.2
-----	------	------	------	------	------	------	------	------

**MATHEMATICS 6 PRE-AP**

39	37.8	65.4	84.0	86.0	28.2	100.0	65.8	97.0
----	------	------	------	------	------	-------	------	------

**MATHEMATICS 7**

266	29.9	66.1	72.0	72.7	25.9	81.6	49.3	84.8
-----	------	------	------	------	------	------	------	------

**MATHEMATICS 7 PRE-AP**

54	51.4	60.6	77.2	79.0	24.1	90.7	64.9	96.0
----	------	------	------	------	------	------	------	------

**MATHEMATICS 8**

241	42.3	63.2	76.0	77.4	26.1	88.8	51.9	84.5
-----	------	------	------	------	------	------	------	------

**MS BAND: LISTENING AND MUSIC ELEMENTS**

32	63.4	95.8	99.3	34.4	100.0	63.8	98.2
----	------	------	------	------	-------	------	------

**MS HEALTH EDUCATION**

117	51.2	69.5	74.0	74.5	52.1	76.9	70.0	92.0
-----	------	------	------	------	------	------	------	------

**SEMESTER 2 TESTS**

Number Tested	Averages				% Passing		District % Passing	
	% Items Correct	Scale Score	Course Mark	Course Mark (no ACP)	ACP	Course	ACP	Course

**LANGUAGE ARTS 7**

226	52.4	67.5	76.2	77.2	48.2	83.6	59.3	82.9
-----	------	------	------	------	------	------	------	------

**LANGUAGE ARTS 7 PRE-AP**

54	58.8	67.4	82.0	83.6	42.6	94.4	79.1	96.0
----	------	------	------	------	------	------	------	------

**LANGUAGE ARTS 8**

217	60.3	72.3	76.5	76.9	65.9	81.6	72.6	85.9
-----	------	------	------	------	------	------	------	------

**LANGUAGE ARTS 8 PRE-AP**

60	53.5	69.0	81.1	82.4	48.3	88.3	75.8	96.8
----	------	------	------	------	------	------	------	------

**MATHEMATICS 6**

254	32.6	65.7	75.3	76.3	23.6	77.2	42.2	81.1
-----	------	------	------	------	------	------	------	------

**MATHEMATICS 6 PRE-AP**

32	48.9	65.1	84.6	86.8	34.4	100.0	72.1	95.6
----	------	------	------	------	------	-------	------	------

**MATHEMATICS 7**

230	38.8	66.0	70.7	71.3	29.6	68.3	50.1	79.6
-----	------	------	------	------	------	------	------	------

**MATHEMATICS 7 PRE-AP**

55	50.0	63.4	76.8	78.3	25.5	80.0	70.9	96.1
----	------	------	------	------	------	------	------	------

**MATHEMATICS 8**

226	40.8	64.5	75.7	77.0	26.5	81.4	51.9	85.4
-----	------	------	------	------	------	------	------	------

**MS BAND: LISTENING AND MUSIC ELEMENTS**

25	78.4	97.6	99.7	84.0	100.0	85.6	96.7
----	------	------	------	------	-------	------	------

**MS HEALTH EDUCATION**

124	55.3	72.7	74.7	74.9	65.3	74.2	73.6	89.8
-----	------	------	------	------	------	------	------	------

**SEMESTER 1 TESTS**

Number Tested	Averages				% Passing		District % Passing	
	% Items Correct	Scale Score	Course Mark	Course Mark (no ACP)	ACP	Course	ACP	Course

**PHYSICAL EDUCATION 6**

274	81.5	100.0	105.8	86.5	100.0	74.0	99.1
-----	------	-------	-------	------	-------	------	------

**PHYSICAL EDUCATION 7 & 8**

315	76.0	86.0	88.6	72.4	100.0	83.6	98.3
-----	------	------	------	------	-------	------	------

**READING 6**

299	51.7	65.5	75.4	76.5	43.1	81.9	56.3	90.6
-----	------	------	------	------	------	------	------	------

**READING MASTERY 7**

235	48.1	68.8	75.4	76.1	48.5	81.3	50.3	84.6
-----	------	------	------	------	------	------	------	------

**READING MASTERY 8**

217	58.1	72.7	78.7	79.4	65.9	88.5	63.1	85.0
-----	------	------	------	------	------	------	------	------

**SCIENCE 6**

253	45.5	67.3	78.5	79.7	39.9	89.6	59.9	91.6
-----	------	------	------	------	------	------	------	------

**SCIENCE 6 PRE-AP**

39	50.9	63.1	83.3	85.5	35.9	94.9	75.7	99.0
----	------	------	------	------	------	------	------	------

**SCIENCE 7**

271	42.0	64.5	78.2	79.7	29.9	91.5	51.0	85.7
-----	------	------	------	------	------	------	------	------

**SCIENCE 7 PRE-AP**

51	50.4	64.6	83.6	85.7	25.5	96.1	75.2	97.8
----	------	------	------	------	------	------	------	------

**SCIENCE 8 & SCIENCE 8 PRE-AP**

300	46.6	64.4	75.7	76.9	33.0	81.7	64.6	90.4
-----	------	------	------	------	------	------	------	------

**SOCIAL STUDIES 6**

314	40.2	62.6	78.4	80.1	19.7	90.8	42.8	90.4
-----	------	------	------	------	------	------	------	------

**SEMESTER 2 TESTS**

Number Tested	Averages				% Passing		District % Passing	
	% Items Correct	Scale Score	Course Mark	Course Mark (no ACP)	ACP	Course	ACP	Course

**PHYSICAL EDUCATION 6**

266	81.8	91.5	92.5	88.7	100.0	82.8	99.0
-----	------	------	------	------	-------	------	------

**PHYSICAL EDUCATION 7 & 8**

256	78.2	79.2	79.3	77.3	87.9	88.6	97.2
-----	------	------	------	------	------	------	------

**READING 6**

288	45.6	66.7	70.9	71.3	38.9	60.1	55.7	86.3
-----	------	------	------	------	------	------	------	------

**READING MASTERY 7**

185	50.1	69.5	73.4	73.8	53.5	70.8	59.4	81.4
-----	------	------	------	------	------	------	------	------

**READING MASTERY 8**

211	63.8	75.8	82.3	83.0	73.5	91.9	71.7	85.4
-----	------	------	------	------	------	------	------	------

**SCIENCE 6**

263	51.1	68.8	76.7	77.6	51.0	84.0	57.7	87.5
-----	------	------	------	------	------	------	------	------

**SCIENCE 6 PRE-AP**

31	58.3	68.7	82.1	83.6	45.2	100.0	83.1	99.0
----	------	------	------	------	------	-------	------	------

**SCIENCE 7**

243	52.0	70.6	79.2	80.1	54.3	92.2	71.7	85.1
-----	------	------	------	------	------	------	------	------

**SCIENCE 7 PRE-AP**

51	55.9	66.1	83.5	85.5	41.2	96.1	81.2	96.9
----	------	------	------	------	------	------	------	------

**SCIENCE 8 & SCIENCE 8 PRE-AP**

282	50.3	65.3	76.2	77.4	36.5	79.4	64.5	88.8
-----	------	------	------	------	------	------	------	------

**SOCIAL STUDIES 6**

295	44.5	63.0	74.8	76.1	30.2	73.2	56.1	86.5
-----	------	------	------	------	------	------	------	------

**SEMESTER 1 TESTS**

Number Tested	Averages				% Passing		District % Passing	
	% Items Correct	Scale Score	Course Mark	Course Mark (no ACP)	ACP	Course	ACP	Course

**TECHNOLOGY APPLICATIONS**

141	41.6	65.0	79.9	81.6	27.7	95.0	60.4	93.7
-----	------	------	------	------	------	------	------	------

**TEXAS STUDIES 7**

269	39.6	66.5	74.0	74.8	31.2	78.4	49.3	87.3
-----	------	------	------	------	------	------	------	------

**TEXAS STUDIES 7 PRE-AP**

47	55.8	66.9	80.0	81.4	36.2	87.2	68.1	97.3
----	------	------	------	------	------	------	------	------

**U.S. STUDIES 8**

238	37.5	63.9	74.5	75.6	19.7	78.2	50.5	85.9
-----	------	------	------	------	------	------	------	------

**U.S. STUDIES 8 PRE-AP**

58	53.8	65.4	83.7	85.7	32.8	96.6	70.3	97.8
----	------	------	------	------	------	------	------	------

**SEMESTER 2 TESTS**

Number Tested	Averages				% Passing		District % Passing	
	% Items Correct	Scale Score	Course Mark	Course Mark (no ACP)	ACP	Course	ACP	Course

**TECHNOLOGY APPLICATIONS**

122	50.1	69.5	77.7	78.6	44.3	83.6	65.5	89.7
-----	------	------	------	------	------	------	------	------

**TEXAS STUDIES 7**

242	37.1	66.3	75.5	76.5	28.1	86.8	59.9	84.9
-----	------	------	------	------	------	------	------	------

**TEXAS STUDIES 7 PRE-AP**

52	55.6	69.0	80.1	81.3	48.1	88.5	79.0	95.9
----	------	------	------	------	------	------	------	------

**U.S. STUDIES 8**

228	45.0	63.3	72.2	73.1	30.3	61.4	54.3	84.4
-----	------	------	------	------	------	------	------	------

**U.S. STUDIES 8 PRE-AP**

54	53.5	58.9	79.3	81.6	27.8	81.5	69.5	95.0
----	------	------	------	------	------	------	------	------