

DATA PACKET

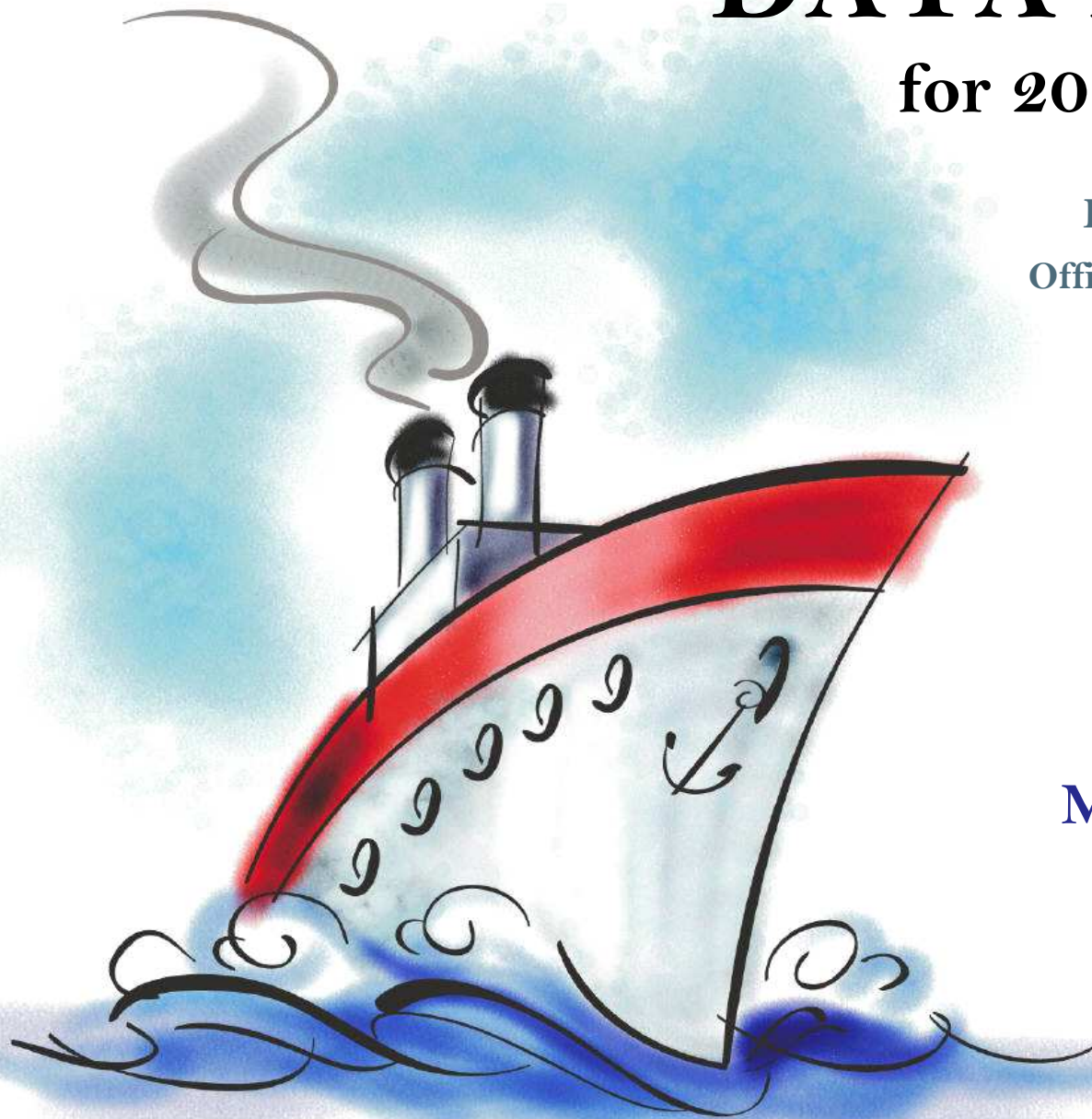
for 2014-15 planning

Evaluation & Assessment
Office of Institutional Research
<http://mydata.dallasisd.org>
OIR@dallasisd.org

September 5, 2014

School Number 352

**BALCH SPRINGS
MIDDLE SCHOOL**



Dallas Independent School District

2. Contents Table of Contents

STUDENTS AND STAFF

- 5. Summary Summary of Student and Teacher Statistics
- 7. Enroll (2) Enrollment Statistics by Select Student Group
- 9. Teachers Teacher Statistics

STAAR (English)

- 10. Reading (3-8) STAAR 3-8 Reading in English
- 18. Math (3-8) STAAR 3-8 Mathematics in English
- 26. Science (3-8) STAAR 3-8 Science in English

STAAR L

- 34. Math (3-8) STAAR L 3-8 Mathematics

STAAR M

- 38. Reading (3-8) STAAR M 3-8 Reading
- 46. Math (3-8) STAAR M 3-8 Mathematics
- 54. SS (3-8) STAAR M 3-8 Social Studies

ENGLISH PROFICIENCY

- 58. WMLS Woodcock-Muñoz Language Survey

LOCAL ASSESSMENT

- 60. ACP Assessments of Course Performance

3. Notes Notes and Data Descriptions

- 6. Enroll (1) Enrollment Statistics by Ethnicity
- 8. Attendance Student Attendance Statistics

- 14. Writing (3-8) STAAR 3-8 Writing in English
- 22. Math (EOC) STAAR EOC Mathematics
- 30. SS (3-8) STAAR 3-8 Social Studies in English

- 42. Writing (3-8) STAAR M 3-8 Writing
- 50. Science (3-8) STAAR M 3-8 Science

59. TELPAS Texas English Language Proficiency Assessment System

2013-14 SCHOOL SUMMARY

- Student percentages are computed as the percentage of total student enrollment.
- Additional statistics are available in ENROLLMENT and TEACHER reports.
- Race/ethnic categories are based on the newest federal standards for ethnicity and race reporting, though some categories have been combined because of small group sizes. Students reporting their ethnicity as “Hispanic” are not counted in any race category.
- “Economically disadvantaged” students are those who qualify for free or reduced-price lunch through the federal government's program.
- Teacher demographics and assignments are from the district's Public Education Information Management System (PEIMS) submission to the TEA.

ENROLLMENT

- Statistics are based on the school's enrollment at the end of the fifth six-weeks grading period.
- “Economically disadvantaged” students are those receiving free or reduced-price lunches.
- “New” students were new to the district in 2013-14. They are counted as new if not enrolled in a district campus before the last day of the 2012-13 school year.
- The “retention rate” is the percentage of students in the same grade at the end of the fifth six-weeks grading period for both 2012-13 and 2013-14.

ATTENDANCE

- Statistics are based on student attendance through the end of the sixth six-weeks grading period (the end of the school year).
- “Average daily membership” is the total number of school days students were ENROLLED divided by the number of school days in the year.
- The “average daily attendance” number (N) is the total number of school days students were IN ATTENDANCE divided by the number of school days in the year. The “average daily attendance” percentage (%) is the average attendance rate. For each student, the number of days attended is divided by the number of days enrolled. This rate is then averaged across students.
- The number (N) of “yearly transactions” is the total number of transfer and withdrawal transactions in the school year. The percentage (%) is the number of transactions divided by “average daily membership,” which gives (on average) the percentage of the membership associated with a transaction.
- “Continuously enrolled” students are enrolled and in attendance for a minimum number of instructional days in at least one course at the school between the beginning of the school year and the first day of the main STAAR testing period. The minimum number varies depending on the school year's calendar, but is typically around 130 days.
- The “stability rate” is the number of continuously enrolled students divided by “average daily membership.”

TEACHERS

- Teacher demographics and assignments are from the district's Public Education Information Management System (PEIMS) submission to the TEA.
- Teacher absences counted towards the average DO NOT include vacation days (coded as VAC in personnel database).
- Retention rate for a school year is computed with numerator “# of teachers assigned to the school both that year and the year prior” and denominator “# of teachers assigned to the school for the prior year.” That is, the retention rate is the percentage of the prior year's teachers who continued at the school.

STAAR, STAAR L, and STAAR M

- Cells marked with an asterisk (*) indicate five or fewer students were tested. Blank cells indicate no students were tested.
- Student group assignments are from the district's Public Education Information Management System (PEIMS) submission to the TEA.
- STAAR statistics are based on results from standard STAAR only. STAAR L and STAAR M statistics are computed separately, following TEA reporting practice.
- “Percentage Satisfactory” is the percentage of students achieving Level 2 (Satisfactory) or Level 3 (Advanced).
- Statistics by reporting category are averages for all students (across student groups and genders).
- An “average percentage correct” is computed as follows: for each student, divide the number of items correctly answered by the total number of items in the test section, then average the resulting percentages across all students. For short answers on EOC English tests, an “average rating” is presented; STAAR EOC short answers are rated on a scale of 0 to 3. For written compositions on writing tests, “average score points” is presented. Additional details provided in report footnotes.
- Reading and mathematics statistics for SSI grades 5 and 8 are based on scores cumulative through the second administration.

TELPAS

- Students are counted as having tested if any one of the four domains is rated. Because a TELPAS composite rating is not assigned to a student unless all four domains are rated, the number of TELPAS composite ratings may be smaller than the number tested.
- If a student's composite rating did not increase at least one level from 2013 to 2014, the TEA did not report the 2013 composite rating.
- If a student is rated as advanced high in 2014, the TEA does not differentiate between the advanced and advanced high levels from 2013.

ACP

- Cells marked with an asterisk (*) indicate five or fewer students were tested. Blank cells indicate no students were tested.
- The ACPs are semester exams administered in grades K-12. Not all courses have ACPs. In MIDDLE and HIGH school, ACP results account for a portion of students' final semester grades (10% and 15% respectively). “Average course mark (no ACP)” is computed from semester grades before factoring in ACP scores. In ELEMENTARY school, ACP results account for 5% of students' semester grades for core courses; course-grade statistics are not reported in data packets for elementary grades.
- Raw scores on the ACPs (percentage of items correct) are scaled each year to maintain similar annual passing rates for the district.
- A scale score of at least 70 percent is required to pass an ACP. A course mark of at least 70 percent is required to pass a course.
- Statistics are computed separately for Semester 1 and Semester 2 tests; time of administration during the school year is not relevant. Results from tests written for different school years are not combined.

STUDENT ENROLLMENT

Grade	Enrollment
6	492
7	501
8	433
ALL	1,426

STUDENT AND TEACHER RACE/ETHNICITY

Ethnicity/Race	Students		Teachers	
	Number	Percent	Number	Percent
Black/African American	250	17.5	25	31.6
American Indian/Alaska Native	1	0.1	*	*
Asian/Hawaiian/Pacific Islander	0	0.0	*	*
Hispanic	1,138	79.8	17	21.5
White	28	2.0	30	38.0
Multiple	9	0.6	3	3.8
Other* (teachers only)	—	—	4	5.1
Not reported (students only)	0	0.0	—	—

*For teachers, "Other" category includes American Indian/Alaska Native and Asian/Hawaiian/Pacific Islander.

SELECT STUDENT GROUP ENROLLMENT

Group	Number	Percent
At-Risk	1,272	89.2
Economically disadvantaged	1,335	93.6
Limited English proficient (LEP)	647	45.4
Special education	161	11.3
Talented and Gifted (TAG)	155	10.9

Grade	Year	Enrollment	African American		American Indian		Asian		Hispanic		White		Multiple category	
			N	%	N	%	N	%	N	%	N	%	N	%
6	2012													
	2013	527	87	16.5	0	0.0	0	0.0	426	80.8	10	1.9	4	0.8
	2014	492	84	17.1	0	0.0	0	0.0	396	80.5	9	1.8	3	0.6
7	2012													
	2013	436	76	17.4	1	0.2	0	0.0	344	78.9	15	3.4	0	0.0
	2014	501	83	16.6	0	0.0	0	0.0	404	80.6	8	1.6	6	1.2
8	2012													
	2013	301	62	20.6	0	0.0	0	0.0	226	75.1	11	3.7	2	0.7
	2014	433	83	19.2	1	0.2	0	0.0	338	78.1	11	2.5	0	0.0
6-8	2012													
	2013	1,264	225	17.8	1	0.1	0	0.0	996	78.8	36	2.8	6	0.5
	2014	1,426	250	17.5	1	0.1	0	0.0	1,138	79.8	28	2.0	9	0.6

Grade	Year	Enrollment	Economically Disadvantaged		LEP		Special Education		At Risk		TAG		New (to District)		Gender		Retention Rate (%)
			N	%	N	%	N	%	N	%	N	%	N	%	% Male	% Female	
6	2012																
	2013	527	506	96.0	252	47.8	54	10.2	431	81.8	76	14.4	50	9.5	51.4	48.6	0.6
	2014	492	461	93.7	268	54.5	58	11.8	445	90.4	67	13.6	38	7.7	53.9	46.1	2.0
7	2012																
	2013	436	413	94.7	190	43.6	45	10.3	347	79.6	48	11.0	29	6.7	55.3	44.7	1.4
	2014	501	468	93.4	223	44.5	46	9.2	441	88.0	49	9.8	41	8.2	49.7	50.3	1.6
8	2012																
	2013	301	283	94.0	99	32.9	42	14.0	223	74.1	26	8.6	40	13.3	56.8	43.2	3.0
	2014	433	406	93.8	156	36.0	57	13.2	386	89.1	39	9.0	30	6.9	56.6	43.4	1.2
6-8	2012																
	2013	1,264	1,202	95.1	541	42.8	141	11.2	1,001	79.2	150	11.9	119	9.4	54.0	46.0	1.4
	2014	1,426	1,335	93.6	647	45.4	161	11.3	1,272	89.2	155	10.9	109	7.6	53.2	46.8	1.6

Grade	Year	Average Daily Membership		Average Daily Attendance				Yearly Transactions			Continuously Enrolled		Stability Rate	
		N	District	N	%	District N	District %	N	%	District %	N	District	%	District
6	2012		10,683			10,315	96.6			17.6		9,420		88.2
	2013	525	11,463	506	96.4	11,062	96.5	77	14.7	21.1	478	10,320	91.0	90.0
	2014	488	10,808	473	96.9	10,413	96.3	66	13.5	20.0	441	9,554	90.3	88.4
7	2012		10,204			9,727	95.3			23.8		8,576		84.0
	2013	433	10,542	416	95.9	10,116	96.0	77	17.8	24.5	386	9,357	89.1	88.8
	2014	493	11,195	476	96.5	10,729	95.8	90	18.2	22.1	443	9,852	89.8	88.0
8	2012		10,369			9,838	94.9			15.5		8,711		84.0
	2013	307	9,955	291	94.8	9,486	95.3	65	21.1	17.6	254	8,664	82.6	87.0
	2014	425	10,449	406	95.4	9,970	95.4	29	6.8	13.1	375	9,097	88.2	87.1
6-8	2012		31,256			29,880	95.6			18.9		26,707		85.4
	2013	1,266	31,960	1,213	95.8	30,665	96.0	219	17.3	21.1	1,118	28,341	88.3	88.7
	2014	1,407	32,451	1,355	96.3	31,112	95.9	185	13.2	18.5	1,259	28,503	89.5	87.8

Teachers: 79

DISTRIBUTIONS

Ethnicity/Race	Number	Percentage
African American	25	31.6
Hispanic	17	21.5
White	30	38.0
Multiple	3	3.8
Other	4	5.1

Gender	Number	Percentage
Female	49	62.0
Male	30	38.0

ATTENDANCE / RETENTION

	Average Absences	Retention Rate
2011-12		—
2012-13	6.1	0.0
2013-14	9.2	72.6

YEARS EXPERIENCE

Years	Number	Percentage
Beginning (0)	18	22.8
1	21	26.6
2	1	1.3
3	3	3.8
4	2	2.5
5	3	3.8
1-3	25	31.6
More than 3	36	45.6
1 - 5	30	38.0
6 - 10	9	11.4
11 - 20	16	20.3
More than 20	6	7.6

PERCENTAGE SATISFACTORY (Levels 2 or 3)

Grade	Year	White	African Amer	Hispanic	Econ Disadv	Special Educ	LEP	At Risk	Migrant	Male	Female	All	District	Number Tested (All Students)
6	2012												63.5	0
	2013	20.0	49.3	45.1	44.8	40.0	36.9	30.9		43.3	47.0	45.2	57.7	487
	2014	55.6	47.9	63.4	60.2	22.2	56.1	53.4		56.6	65.2	60.5	63.1	446
7	2012												67.5	0
	2013	61.5	63.6	59.8	60.3	0.0	54.0	46.9		55.8	65.8	60.3	67.3	401
	2014	60.0	50.0	56.1	56.4	31.3	38.3	44.7		54.5	55.6	55.1	60.5	470
8	2012												71.3	0
	2013	37.5	72.9	81.0	77.9	56.3	66.7	63.9		73.7	83.2	77.9	82.7	281
	2014	66.7	76.6	81.9	82.0	47.1	68.1	75.4		78.7	83.2	80.7	81.5	389
6-8	2012												67.4	0
	2013	41.9	61.0	58.3	58.0	34.2	47.7	43.9		55.5	61.3	58.3	68.6	1,169
	2014	60.7	57.3	66.3	65.6	33.3	52.8	56.6		62.8	66.6	64.6	68.2	1,305

NUMBER TESTED IN GRADES 6-8														
2012														29,211
2013	31	200	931	1,102	38	587	718			613	556	1,169		29,692
2014	28	211	1,056	1,172	51	593	1,003			689	616	1,305		30,015

NUMBER UNSATISFACTORY (Level 1)

Grade	Year	White	African Amer	Hispanic	Econ Disadv	Special Educ	LEP	At Risk	Migrant	Male	Female	All	District	Number Tested (All Students)
6	2012												3,673	0
	2013	8	38	219	255	6	176	210		136	131	267	4,523	487
	2014	4	37	133	160	14	108	165		105	71	176	3,679	446
7	2012												3,070	0
	2013	5	24	129	150	12	103	136		96	63	159	3,215	401
	2014	4	38	166	178	11	127	199		105	106	211	4,075	470
8	2012												2,786	0
	2013	5	16	40	58	7	28	57		41	21	62	1,586	281
	2014	3	15	57	65	9	45	71		46	29	75	1,797	389
6-8	2012												9,529	0
	2013	18	78	388	463	25	307	403		273	215	488	9,324	1,169
	2014	11	90	356	403	34	280	435		256	206	462	9,551	1,305

NUMBER TESTED IN GRADES 6-8														
2012														29,211
2013	31	200	931	1,102	38	587	718			613	556	1,169		29,692
2014	28	211	1,056	1,172	51	593	1,003			689	616	1,305		30,015

PERCENTAGE ADVANCED (Level 3)

Grade	Year	White	African Amer	Hispanic	Econ Disadv	Special Educ	LEP	At Risk	Migrant	Male	Female	All	District	Number Tested (All Students)
6	2012												8.3	0
	2013	0.0	4.0	4.0	4.1	0.0	2.5	1.3		5.4	2.4	3.9	11.3	487
	2014	11.1	0.0	4.4	4.0	0.0	2.4	2.8		2.9	4.9	3.8	7.1	446
7	2012												10.3	0
	2013	7.7	6.1	3.1	4.0	0.0	1.8	1.2		1.4	6.5	3.7	8.7	401
	2014	0.0	3.9	6.1	6.1	0.0	0.5	0.6		8.2	2.9	5.5	10.0	470
8	2012												9.9	0
	2013	0.0	3.4	7.1	6.1	0.0	1.2	2.5		7.1	4.8	6.0	15.5	281
	2014	11.1	6.3	10.5	10.2	0.0	1.4	2.4		5.6	15.0	9.8	13.1	389
6-8	2012												9.5	0
	2013	3.2	4.5	4.4	4.5	0.0	2.0	1.5		4.4	4.3	4.4	11.7	1,169
	2014	7.1	3.3	6.8	6.7	0.0	1.5	1.9		5.5	7.0	6.2	10.1	1,305

NUMBER TESTED IN GRADE 6-8														
2012														29,211
2013	31	200	931	1,102	38	587	718			613	556	1,169		29,692
2014	28	211	1,056	1,172	51	593	1,003			689	616	1,305		30,015

AVERAGE PERCENTAGE OF ITEMS CORRECT BY REPORTING CATEGORY

Grade	Year	REPORTING CATEGORY		
		1. Understanding Across Genres (GR 3-5) 1. Understanding/Analysis Across Genres (GR 6-8)	2. Understanding/Analysis of Literary Texts	3. Understanding/Analysis of Informational Texts
6	2012			
	2013	57.0	53.8	51.6
	2014	58.5	54.2	56.5
7	2012			
	2013	56.0	53.8	61.8
	2014	57.6	53.9	51.6
8	2012			
	2013	63.5	64.3	57.7
	2014	68.2	62.9	61.3
6-8	2012			
	2013	58.2	56.4	56.6
	2014	61.0	56.7	56.2

PERCENTAGE SATISFACTORY (Levels 2 or 3)

Grade	Year	White	African Amer	Hispanic	Econ Disadv	Special Educ	LEP	At Risk	Migrant	Male	Female	All	District	Number Tested (All Students)
7	2012												59.2	0
	2013	46.2	49.2	42.9	43.4	7.7	37.3	27.3		34.4	55.2	43.9	57.1	401
	2014	40.0	49.4	54.2	54.4	25.0	35.7	42.6		49.1	56.8	53.1	54.6	471

NUMBER TESTED IN GRADE 7														
2012														9,456
2013	13	65	322	378	13	225	256			218	183	401		9,785
2014	10	77	378	410	16	207	359			230	241	471		10,339

NUMBER UNSATISFACTORY (Level 1)

Grade	Year	White	African Amer	Hispanic	Econ Disadv	Special Educ	LEP	At Risk	Migrant	Male	Female	All	District	Number Tested (All Students)
7	2012												3,859	0
	2013	7	33	184	214	12	141	186		143	82	225	4,198	401
	2014	6	39	173	187	12	133	206		117	104	221	4,690	471

NUMBER TESTED IN GRADE 7														
2012														9,456
2013	13	65	322	378	13	225	256			218	183	401		9,785
2014	10	77	378	410	16	207	359			230	241	471		10,339

PERCENTAGE ADVANCED (Level 3)

Grade	Year	White	African Amer	Hispanic	Econ Disadv	Special Educ	LEP	At Risk	Migrant	Male	Female	All	District	Number Tested (All Students)
7	2012												3.4	0
	2013	0.0	0.0	0.0	0.0	0.0	0.0	0.0		0.0	0.0	0.0	1.5	401
	2014	0.0	0.0	0.5	0.5	0.0	0.0	0.0		0.4	0.4	0.4	3.0	471

NUMBER TESTED IN GRADE 7														
2012														9,456
2013	13	65	322	378	13	225	256			218	183	401		9,785
2014	10	77	378	410	16	207	359			230	241	471		10,339

AVERAGE PERCENTAGE OF ITEMS CORRECT BY REPORTING CATEGORY

Grade	Year	REPORTING CATEGORY			
		1. Composition ¹ GR 4: Personal Narrative GR 7: Expository	1. Composition ¹ GR 4: Expository GR 7: Personal Narrative	2. Revision	3. Editing
7	2012				
	2013	3.7	4.1	59.6	54.7
	2014	3.9	4.5	58.8	52.6

¹Average score points (range 0-8). A STAAR composition is rated twice on a scale of 1 to 4, and the ratings are summed to determine score points for the composition. Score point scale: 0=Non-scorable; 2=Very Limited; 3=between Very Limited and Basic; 4=Basic; 5=between Basic and Satisfactory; 6=Satisfactory; 7=between Satisfactory and Accomplished; 8=Accomplished

PERCENTAGE SATISFACTORY (Levels 2 or 3)

Grade	Year	White	African Amer	Hispanic	Econ Disadv	Special Educ	LEP	At Risk	Migrant	Male	Female	All	District	Number Tested (All Students)
6	2012												66.4	0
	2013	44.4	33.8	52.6	49.7	33.3	48.7	37.1		49.8	49.0	49.4	60.6	476
	2014	33.3	50.7	68.0	64.3	29.2	62.8	58.4		61.2	68.5	64.5	64.3	445
7	2012												59.9	0
	2013	35.7	43.3	51.1	49.2	28.6	46.3	35.2		50.5	47.5	49.1	59.9	395
	2014	40.0	31.5	51.6	49.5	23.1	38.8	38.1		49.6	46.4	47.9	55.1	459
8	2012												51.9	0
	2013	62.5	50.0	74.5	69.0	40.0	66.7	55.6		64.1	73.5	68.3	74.0	259
	2014	71.4	59.3	76.8	76.0	56.3	69.4	69.7		77.0	69.6	73.7	73.2	339
6-8	2012												60.3	0
	2013	45.2	41.6	56.8	53.9	34.1	50.3	40.5		53.4	53.8	53.6	63.7	1,130
	2014	46.2	46.3	64.3	62.2	35.8	56.0	54.3		61.8	59.9	60.9	63.3	1,243

NUMBER TESTED IN GRADES 6-8														
2012								697						26,044
2013	31	197	895	1,067	41	563	697			595	535	1,130		26,676
2014	26	203	1,004	1,109	53	577	976			657	586	1,243		27,304

NUMBER UNSATISFACTORY (Level 1)

Grade	Year	White	African Amer	Hispanic	Econ Disadv	Special Educ	LEP	At Risk	Migrant	Male	Female	All	District	Number Tested (All Students)
6	2012							0					3,327	0
	2013	5	49	185	228	8	137	185		119	122	241	4,133	476
	2014	6	35	116	144	17	90	147		94	64	158	3,478	445
7	2012							0					3,705	0
	2013	9	38	153	189	10	117	162		107	94	201	3,851	395
	2014	6	50	179	201	10	123	216		113	126	239	4,536	459
8	2012							0					3,319	0
	2013	3	28	49	75	9	26	68		51	31	82	1,709	259
	2014	2	24	63	74	7	41	83		44	45	89	2,001	339
6-8	2012							0					10,351	0
	2013	17	115	387	492	27	280	415		277	247	524	9,693	1,130
	2014	14	109	358	419	34	254	446		251	235	486	10,015	1,243

NUMBER TESTED IN GRADES 6-8														
2012								697						26,044
2013	31	197	895	1,067	41	563	697			595	535	1,130		26,676
2014	26	203	1,004	1,109	53	577	976			657	586	1,243		27,304

PERCENTAGE ADVANCED (Level 3)

Grade	Year	White	African Amer	Hispanic	Econ Disadv	Special Educ	LEP	At Risk	Migrant	Male	Female	All	District	Number Tested (All Students)
6	2012												9.8	0
	2013	0.0	0.0	5.1	4.4	0.0	3.0	1.0		5.5	2.9	4.2	8.5	476
	2014	11.1	4.2	7.2	7.2	0.0	3.3	3.1		7.0	6.4	6.7	9.6	445
7	2012												6.3	0
	2013	0.0	1.5	1.3	1.3	0.0	1.4	0.4		1.4	1.1	1.3	4.8	395
	2014	0.0	0.0	3.8	3.3	0.0	0.5	0.3		3.6	2.6	3.1	6.7	459
8	2012												0.4	0
	2013	0.0	1.8	0.0	0.4	0.0	0.0	0.7		0.0	0.9	0.4	0.9	259
	2014	0.0	0.0	0.7	0.6	0.0	0.0	0.0		1.0	0.0	0.6	1.0	339
6-8	2012												6.1	0
	2013	0.0	1.0	2.7	2.4	0.0	2.0	0.7		2.7	1.9	2.3	5.3	1,130
	2014	3.8	1.5	4.2	4.0	0.0	1.6	1.2		4.1	3.2	3.7	6.2	1,243

NUMBER TESTED IN GRADE 6-8														
2012														26,044
2013	31	197	895	1,067	41	563	697			595	535	1,130		26,676
2014	26	203	1,004	1,109	53	577	976			657	586	1,243		27,304

AVERAGE PERCENTAGE OF ITEMS CORRECT BY REPORTING CATEGORY

Grade	Year	REPORTING CATEGORY				
		1. Numbers, Operations, and Quantitative Reasoning	2. Patterns, Relationships, and Algebraic Reasoning	3. Geometry and Spatial Reasoning	4. Measurement	5. Probability and Statistics
6	2012					
	2013	47.0	49.9	42.6	37.6	43.5
	2014	55.1	50.4	54.6	49.0	49.7
7	2012					
	2013	42.8	49.6	50.7	32.5	38.3
	2014	52.7	44.8	43.4	37.0	46.8
8	2012					
	2013	49.9	50.6	40.6	39.4	43.3
	2014	48.3	47.3	45.0	39.8	55.5
6-8	2012					
	2013	46.2	49.9	45.0	36.2	41.6
	2014	52.4	47.5	47.9	42.1	50.2

PERCENTAGE SATISFACTORY (Levels 2 or 3)

Test	Year	White	African Amer	Hispanic	Econ Disadv	Special Educ	LEP	At Risk	Migrant	Male	Female	All	District
ALGEBRA I (GRADE 8)	2012							*					94.1
	2013		*	94.1	93.8		*	*		91.7	100.0	94.4	95.4
	2014	*	*	97.6	100.0		*	90.9		95.7	100.0	97.9	97.2
Tests Taken	2012							3					2,554
	2013		1	17	16		2	3		12	6	18	2,474
	2014	1	5	41	42		4	11		23	24	47	2,117

NUMBER UNSATISFACTORY (Level 1)

Test	Year	White	African Amer	Hispanic	Econ Disadv	Special Educ	LEP	At Risk	Migrant	Male	Female	All	District
ALGEBRA I (GRADE 8)	2012							*					151
	2013		*	1	1		*	*		1	0	1	115
	2014	*	*	1	0		*	1		1	0	1	60
Tests Taken	2012							3					2,554
	2013		1	17	16		2	3		12	6	18	2,474
	2014	1	5	41	42		4	11		23	24	47	2,117

PERCENTAGE ADVANCED (Level 3)

Test	Year	White	African Amer	Hispanic	Econ Disadv	Special Educ	LEP	At Risk	Migrant	Male	Female	All	District
ALGEBRA I (GRADE 8)	2012												19.0
	2013		*	5.9	0.0		*	*		8.3	0.0	5.6	24.2
	2014	*	*	29.3	28.6		*	0.0		17.4	33.3	25.5	28.8
Tests Taken	2012												2,554
	2013		1	17	16		2	3		12	6	18	2,474
	2014	1	5	41	42		4	11		23	24	47	2,117

AVERAGE PERCENTAGE OF ITEMS CORRECT BY REPORTING CATEGORY

ALGEBRA I (GRADE 8)	1. Functional Relationships	2. Properties and Attributes of Functions	3. Linear Functions	4. Linear Equations and Inequalities	5. Quadratic and Other Nonlinear Functions
2012					
2013	63.2	51.9	63.3	57.2	46.3
2014	67.8	69.0	67.5	69.8	63.8

PERCENTAGE SATISFACTORY (Levels 2 or 3)

Grade	Year	White	African Amer	Hispanic	Econ Disadv	Special Educ	LEP	At Risk	Migrant	Male	Female	All	District	Number Tested (All Students)
8	2012												54.0	
	2013	40.0	31.7	51.0	46.6	31.8	30.5	28.9		47.8	45.1	46.6	65.8	281
	2014	66.7	57.1	61.1	61.9	20.0	38.8	49.5		63.7	56.6	60.5	61.9	387

NUMBER TESTED IN GRADE 8														
2012														9,431
2013	10	60	210	264	22	82	159			159	122	281		8,998
2014	9	63	314	331	20	139	287			212	175	387		9,466

NUMBER UNSATISFACTORY (Level 1)

Grade	Year	White	African Amer	Hispanic	Econ Disadv	Special Educ	LEP	At Risk	Migrant	Male	Female	All	District	Number Tested (All Students)
8	2012												4335	
	2013	6	41	103	141	15	57	113		83	67	150	3074	281
	2014	3	27	122	126	16	85	145		77	76	153	3605	387

NUMBER TESTED IN GRADE 8														
2012														9,431
2013	10	60	210	264	22	82	159			159	122	281		8,998
2014	9	63	314	331	20	139	287			212	175	387		9,466

PERCENTAGE ADVANCED (Level 3)

Grade	Year	White	African Amer	Hispanic	Econ Disadv	Special Educ	LEP	At Risk	Migrant	Male	Female	All	District	Number Tested (All Students)
8	2012												4.2	
	2013	0.0	0.0	1.9	1.5	0.0	1.2	1.3		2.5	0.0	1.4	7.1	281
	2014	0.0	3.2	8.6	8.5	0.0	2.2	1.7		7.5	7.4	7.5	11.3	387

NUMBER TESTED IN GRADE 8														
2012														9,431
2013	10	60	210	264	22	82	159			159	122	281		8,998
2014	9	63	314	331	20	139	287			212	175	387		9,466

AVERAGE PERCENTAGE OF ITEMS CORRECT BY REPORTING CATEGORY

Grade	Year	REPORTING CATEGORY			
		1. Matter and Energy	2. Force, Motion, and Energy	3. Earth and Space	4. Organisms and Environments
8	2012				
	2013	49.8	51.8	47.5	50.8
	2014	60.1	59.0	53.2	68.7

PERCENTAGE SATISFACTORY (Levels 2 or 3)

Grade	Year	White	African Amer	Hispanic	Econ Disadv	Special Educ	LEP	At Risk	Migrant	Male	Female	All	District	Number Tested (All Students)
8	2012												52.5	0
	2013	10.0	35.6	47.1	43.3	31.8	33.3	32.1		46.8	39.3	43.5	59.3	278
	2014	55.6	50.0	49.5	50.8	23.8	28.8	37.4		52.1	46.6	49.6	53.5	387

NUMBER TESTED IN GRADE 8														
2012														9,392
2013	10	59	208	261	22	81	156			156	122	278		8,991
2014	9	64	313	331	21	139	286			213	174	387		9,464

NUMBER UNSATISFACTORY (Level 1)

Grade	Year	White	African Amer	Hispanic	Econ Disadv	Special Educ	LEP	At Risk	Migrant	Male	Female	All	District	Number Tested (All Students)
8	2012												4462	0
	2013	9	38	110	148	15	54	106		83	74	157	3656	278
	2014	4	32	158	163	16	99	179		102	93	195	4402	387

NUMBER TESTED IN GRADE8														
2012														9,392
2013	10	59	208	261	22	81	156			156	122	278		8,991
2014	9	64	313	331	21	139	286			213	174	387		9,464

PERCENTAGE ADVANCED (Level 3)

Grade	Year	White	African Amer	Hispanic	Econ Disadv	Special Educ	LEP	At Risk	Migrant	Male	Female	All	District	Number Tested (All Students)
8	2012												7.1	0
	2013	0.0	1.7	2.4	1.9	0.0	2.5	1.3		3.8	0.0	2.2	8.8	278
	2014	11.1	3.1	3.8	4.5	0.0	0.0	0.3		1.9	6.3	3.9	7.3	387

NUMBER TESTED IN GRADE 8														
2012														9,392
2013	10	59	208	261	22	81	156			156	122	278		8,991
2014	9	64	313	331	21	139	286			213	174	387		9,464

AVERAGE PERCENTAGE OF ITEMS CORRECT BY REPORTING CATEGORY

Grade	Year	REPORTING CATEGORY			
		1. History	2. Geography and Culture	3. Government and Citizenship	4. Economics, Science, Technology, and Society
8	2012				
	2013	51.7	51.3	40.8	42.9
	2014	53.7	42.8	51.5	53.7

PERCENTAGE SATISFACTORY (Levels 2 or 3)

Grade	Year	White	African Amer	Hispanic	Econ Disadv	Special Educ	LEP	At Risk	Migrant	Male	Female	All	District	Number Tested (All Students)
6	2012												22.8	0
	2013	*		37.5	33.3		33.3	28.6		*	*	33.3	30.6	9
	2014			16.7	*		16.7	16.7		*	*	16.7	29.0	6
7	2012												16.9	0
	2013			12.5	12.5		12.5	12.5		*	*	12.5	24.3	8
	2014			*	*		*	*		*	*	*	24.8	5
8	2012												0.0	0
	2013			*	*		*	*		*	*	*	25.5	3
	2014			*	*		*	*		*	*	*	33.2	3
6-8	2012												12.7	0
	2013	*		21.1	20.0		20.0	16.7		22.2	18.2	20.0	26.8	20
	2014			7.1	0.0		7.1	7.7		16.7	0.0	7.1	29.1	14

NUMBER TESTED IN GRADES 6-8														
2012														620
2013	1		19	20			20	18		9	11	20		634
2014			14	11			14	13		6	8	14		722

NUMBER UNSATISFACTORY (Level 1)

Grade	Year	White	African Amer	Hispanic	Econ Disadv	Special Educ	LEP	At Risk	Migrant	Male	Female	All	District	Number Tested (All Students)
6	2012												146	0
	2013	*		5	6		6	5		*	*	6	150	9
	2014			5	*		5	5		*	*	5	171	6
7	2012												177	0
	2013			7	7		7	7		*	*	7	162	8
	2014			*	*		*	*		*	*	*	176	5
8	2012												218	0
	2013			*	*		*	*		*	*	*	152	3
	2014			*	*		*	*		*	*	*	165	3
6-8	2012												541	0
	2013	*		15	16		16	15		7	9	16	464	20
	2014			13	11		13	12		5	8	13	512	14

NUMBER TESTED IN GRADES 6-8														
2012														620
2013	1		19	20			20	18		9	11	20		634
2014			14	11			14	13		6	8	14		722

PERCENTAGE ADVANCED (Level 3)

Grade	Year	White	African Amer	Hispanic	Econ Disadv	Special Educ	LEP	At Risk	Migrant	Male	Female	All	District	Number Tested (All Students)
6	2012												1.1	0
	2013	*		0.0	0.0		0.0	0.0		*	*	0.0	2.3	9
	2014			0.0	*		0.0	0.0		*	*	0.0	3.3	6
7	2012												0.0	0
	2013			0.0	0.0		0.0	0.0		*	*	0.0	0.9	8
	2014			*	*		*	*		*	*	*	0.0	5
8	2012												0.0	0
	2013			*	*		*	*		*	*	*	0.0	3
	2014			*	*		*	*		*	*	*	0.4	3
6-8	2012												0.3	0
	2013	*		0.0	0.0		0.0	0.0		0.0	0.0	0.0	1.1	20
	2014			0.0	0.0		0.0	0.0		0.0	0.0	0.0	1.2	14

NUMBER TESTED IN GRADE 6-8														
2012														620
2013	1		19	20			20	18		9	11	20		634
2014			14	11			14	13		6	8	14		722

AVERAGE PERCENTAGE OF ITEMS CORRECT BY REPORTING CATEGORY

Grade	Year	REPORTING CATEGORY				
		1. Numbers, Operations, and Quantitative Reasoning	2. Patterns, Relationships, and Algebraic Reasoning	3. Geometry and Spatial Reasoning	4. Measurement	5. Probability and Statistics
6	2012					
	2013	36.1	43.5	30.6	47.2	34.7
	2014	32.3	25.0	25.0	35.4	27.1
7	2012					
	2013	26.0	33.7	30.0	25.0	36.3
	2014	*	*	*	*	*
8	2012					
	2013	*	*	*	*	*
	2014	*	*	*	*	*
6-8	2012					
	2013	28.9	34.1	28.3	35.9	32.6
	2014	30.5	25.1	29.1	26.9	24.5

PERCENTAGE SATISFACTORY (Levels 2 or 3)

Grade	Year	White	African Amer	Hispanic	Econ Disadv	Special Educ	LEP	At Risk	Migrant	Male	Female	All	District	Number Tested (All Students)
6	2012												65.5	0
	2013		57.1	72.2	65.6	65.6	77.8	71.4		66.7	62.5	65.6	55.9	32
	2014		41.7	60.7	57.1	55.0	60.0	54.1		40.9	72.2	55.0	51.6	40
7	2012												57.3	0
	2013	*	66.7	76.5	70.0	71.0	75.0	72.0		71.4	70.0	71.0	61.0	31
	2014	*	42.9	69.2	61.1	61.9	62.5	57.9		66.7	50.0	61.9	55.4	21
8	2012												58.0	0
	2013	*	60.0	60.0	64.3	62.1	63.6	63.0		63.6	57.1	62.1	74.5	29
	2014	*	70.6	75.0	71.0	68.6	72.7	66.7		67.9	71.4	68.6	75.0	35
6-8	2012												60.3	0
	2013	66.7	61.1	70.0	66.7	66.3	71.9	68.5		67.2	64.0	66.3	63.6	92
	2014	*	55.6	66.7	63.1	61.5	64.1	59.6		58.5	67.7	61.5	60.0	96

NUMBER TESTED IN GRADES 6-8														
2012														1,571
2013	6	36	50	90	92	32	73			67	25	92		1,687
2014	3	36	57	84	96	39	89			65	31	96		1,689

NUMBER UNSATISFACTORY (Level 1)

Grade	Year	White	African Amer	Hispanic	Econ Disadv	Special Educ	LEP	At Risk	Migrant	Male	Female	All	District	Number Tested (All Students)
6	2012												181	0
	2013		6	5	11	11	2	6		8	3	11	270	32
	2014		7	11	15	18	8	17		13	5	18	281	40
7	2012												244	0
	2013	*	4	4	9	9	3	7		6	3	9	202	31
	2014	*	4	4	7	8	3	8		5	3	8	266	21
8	2012												199	0
	2013	*	4	6	10	11	4	10		8	3	11	142	29
	2014	*	5	4	9	11	3	11		9	2	11	128	35
6-8	2012												624	0
	2013	2	14	15	30	31	9	23		22	9	31	614	92
	2014	*	16	19	31	37	14	36		27	10	37	675	96

NUMBER TESTED IN GRADES 6-8														
2012														1,571
2013	6	36	50	90	92	32	73			67	25	92		1,687
2014	3	36	57	84	96	39	89			65	31	96		1,689

PERCENTAGE ADVANCED (Level 3)

Grade	Year	White	African Amer	Hispanic	Econ Disadv	Special Educ	LEP	At Risk	Migrant	Male	Female	All	District	Number Tested (All Students)
6	2012												3.6	0
	2013		7.1	0.0	3.1	3.1	0.0	0.0		0.0	12.5	3.1	3.1	32
	2014		0.0	0.0	0.0	0.0	0.0	0.0		0.0	0.0	0.0	2.9	40
7	2012												1.0	0
	2013	*	0.0	5.9	3.3	3.2	8.3	4.0		4.8	0.0	3.2	3.5	31
	2014	*	0.0	0.0	5.6	4.8	0.0	5.3		0.0	16.7	4.8	3.9	21
8	2012												1.1	0
	2013	*	0.0	26.7	14.3	13.8	27.3	14.8		18.2	0.0	13.8	2.5	29
	2014	*	5.9	0.0	3.2	2.9	0.0	3.0		3.6	0.0	2.9	2.9	35
6-8	2012												1.9	0
	2013	0.0	2.8	10.0	6.7	6.5	12.5	6.8		7.5	4.0	6.5	3.0	92
	2014	*	2.8	0.0	2.4	2.1	0.0	2.2		1.5	3.2	2.1	3.3	96

NUMBER TESTED IN GRADE 6-8														
2012														1,571
2013	6	36	50	90	92	32	73			67	25	92		1,687
2014	3	36	57	84	96	39	89			65	31	96		1,689

AVERAGE PERCENTAGE OF ITEMS CORRECT BY REPORTING CATEGORY

Grade	Year	REPORTING CATEGORY		
		1. Understanding Across Genres (GR 3-5) 1. Understanding/Analysis Across Genres (GR 6-8)	2. Understanding/Analysis of Literary Texts	3. Understanding/Analysis of Informational Texts
6	2012			
	2013	48.4	52.5	55.6
	2014	45.0	52.3	51.2
7	2012			
	2013	56.5	62.6	52.0
	2014	55.4	57.4	48.3
8	2012			
	2013	63.8	60.7	58.0
	2014	62.9	58.9	53.8
6-8	2012			
	2013	56.0	58.5	55.1
	2014	53.8	55.8	51.5

PERCENTAGE SATISFACTORY (Levels 2 or 3)

Grade	Year	White	African Amer	Hispanic	Econ Disadv	Special Educ	LEP	At Risk	Migrant	Male	Female	All	District	Number Tested (All Students)
7	2012												56.7	0
	2013	*	58.3	68.4	62.5	63.6	69.2	59.3		68.2	54.5	63.6	63.7	33
	2014	*	42.9	71.4	66.7	63.6	50.0	60.0		68.8	50.0	63.6	62.9	22

NUMBER TESTED IN GRADE 7														
2012														586
2013	2	12	19	32	33	13	27			22	11	33		509
2014	1	7	14	18	22	6	20			16	6	22		599

NUMBER UNSATISFACTORY (Level 1)

Grade	Year	White	African Amer	Hispanic	Econ Disadv	Special Educ	LEP	At Risk	Migrant	Male	Female	All	District	Number Tested (All Students)
7	2012												254	0
	2013	*	5	6	12	12	4	11		7	5	12	185	33
	2014	*	4	4	6	8	3	8		5	3	8	222	22

NUMBER TESTED IN GRADE 7														
2012														586
2013	2	12	19	32	33	13	27			22	11	33		509
2014	1	7	14	18	22	6	20			16	6	22		599

PERCENTAGE ADVANCED (Level 3)

Grade	Year	White	African Amer	Hispanic	Econ Disadv	Special Educ	LEP	At Risk	Migrant	Male	Female	All	District	Number Tested (All Students)
7	2012												2.7	0
	2013	*	16.7	15.8	15.6	15.2	23.1	14.8		18.2	9.1	15.2	6.3	33
	2014	*	0.0	7.1	11.1	9.1	0.0	10.0		6.3	16.7	9.1	6.3	22

NUMBER TESTED IN GRADE 7														
2012														586
2013	2	12	19	32	33	13	27			22	11	33		509
2014	1	7	14	18	22	6	20			16	6	22		599

AVERAGE PERCENTAGE OF ITEMS CORRECT BY REPORTING CATEGORY

Grade	Year	REPORTING CATEGORY		
		1. Composition ¹ GR 4: Personal Narrative GR 7: Expository	2. Revision	3. Editing
7	2012			
	2013	2.6	59.0	56.0
	2014	2.3	59.1	50.0

¹Average score points (range 0-6). A STAAR M composition is rated twice on a scale of 0 to 3, and the ratings are summed to determine score points for the composition. Score point scale: 0=Non-scorable; 2=Very Limited; 3=between Very Limited and Basic; 4=Basic; 5=between Basic and Satisfactory; 6=Satisfactory

PERCENTAGE SATISFACTORY (Levels 2 or 3)

Grade	Year	White	African Amer	Hispanic	Econ Disadv	Special Educ	LEP	At Risk	Migrant	Male	Female	All	District	Number Tested (All Students)
6	2012												46.2	0
	2013		33.3	53.3	41.4	43.3	75.0	50.0		36.4	62.5	43.3	54.3	30
	2014		33.3	57.1	42.9	48.5	50.0	46.7		35.3	62.5	48.5	52.0	33
7	2012												50.5	0
	2013	*	18.2	70.6	46.4	48.3	72.7	54.2		63.2	20.0	48.3	49.4	29
	2014	*	37.5	50.0	50.0	48.0	42.9	47.8		57.9	16.7	48.0	48.8	25
8	2012												46.2	0
	2013	*	90.0	80.0	85.7	86.2	72.7	85.2		90.9	71.4	86.2	71.4	29
	2014	*	72.2	86.7	76.5	77.8	81.8	78.8		82.1	62.5	77.8	71.0	36
6-8	2012												47.7	0
	2013	*	44.4	68.1	57.6	59.1	73.3	64.8		63.5	48.0	59.1	58.5	88
	2014	*	52.6	63.5	58.3	59.6	58.8	59.3		62.5	53.3	59.6	56.7	94

NUMBER TESTED IN GRADES 6-8														
2012														1,554
2013	5	36	47	85	88	30	71			63	25	88		1,659
2014	4	38	52	84	94	34	86			64	30	94		1,684

NUMBER UNSATISFACTORY (Level 1)

Grade	Year	White	African Amer	Hispanic	Econ Disadv	Special Educ	LEP	At Risk	Migrant	Male	Female	All	District	Number Tested (All Students)
6	2012												276	0
	2013		10	7	17	17	2	10		14	3	17	272	30
	2014		8	9	16	17	8	16		11	6	17	271	33
7	2012												276	0
	2013	*	9	5	15	15	3	11		7	8	15	257	29
	2014	*	5	8	11	13	4	12		8	5	13	310	25
8	2012												260	0
	2013	*	1	3	4	4	3	4		2	2	4	159	29
	2014	*	5	2	8	8	2	7		5	3	8	149	36
6-8	2012												812	0
	2013	*	20	15	36	36	8	25		23	13	36	688	88
	2014	*	18	19	35	38	14	35		24	14	38	730	94

NUMBER TESTED IN GRADES 6-8														
2012														1,554
2013	5	36	47	85	88	30	71			63	25	88		1,659
2014	4	38	52	84	94	34	86			64	30	94		1,684

PERCENTAGE ADVANCED (Level 3)

Grade	Year	White	African Amer	Hispanic	Econ Disadv	Special Educ	LEP	At Risk	Migrant	Male	Female	All	District	Number Tested (All Students)
6	2012												5.5	0
	2013		0.0	0.0	0.0	0.0	0.0	0.0		0.0	0.0	0.0	4.9	30
	2014		0.0	0.0	0.0	0.0	0.0	0.0		0.0	0.0	0.0	3.4	33
7	2012												1.1	0
	2013	*	0.0	17.6	7.1	10.3	18.2	12.5		15.8	0.0	10.3	3.0	29
	2014	*	0.0	0.0	0.0	0.0	0.0	0.0		0.0	0.0	0.0	2.3	25
8	2012												1.2	0
	2013	*	0.0	0.0	0.0	0.0	0.0	0.0		0.0	0.0	0.0	2.2	29
	2014	*	0.0	0.0	2.9	2.8	0.0	3.0		3.6	0.0	2.8	1.9	36
6-8	2012												2.6	0
	2013	*	0.0	6.4	2.4	3.4	6.7	4.2		4.8	0.0	3.4	3.4	88
	2014	*	0.0	0.0	1.2	1.1	0.0	1.2		1.6	0.0	1.1	2.6	94

NUMBER TESTED IN GRADE 6-8														
2012														1,554
2013	5	36	47	85	88	30	71			63	25	88		1,659
2014	4	38	52	84	94	34	86			64	30	94		1,684

AVERAGE PERCENTAGE OF ITEMS CORRECT BY REPORTING CATEGORY

Grade	Year	REPORTING CATEGORY				
		1. Numbers, Operations, and Quantitative Reasoning	2. Patterns, Relationships, and Algebraic Reasoning	3. Geometry and Spatial Reasoning	4. Measurement	5. Probability and Statistics
6	2012					
	2013	42.4	41.0	57.8	33.3	48.9
	2014	47.8	44.8	52.0	30.3	59.1
7	2012					
	2013	44.5	48.6	57.3	38.5	44.4
	2014	44.4	46.8	54.0	37.3	42.5
8	2012					
	2013	43.8	52.7	46.0	39.3	53.0
	2014	51.1	53.0	44.4	40.6	56.9
6-8	2012					
	2013	43.5	47.4	53.7	37.0	48.8
	2014	48.2	48.5	49.6	36.1	53.9

PERCENTAGE SATISFACTORY (Levels 2 or 3)

Grade	Year	White	African Amer	Hispanic	Econ Disadv	Special Educ	LEP	At Risk	Migrant	Male	Female	All	District	Number Tested (All Students)
8	2012	*											58.2	
	2013	*	66.7	54.5	61.9	59.1	50.0	59.1		60.0	57.1	59.1	59.3	22
	2014	*	56.3	61.5	53.6	54.8	60.0	53.6		55.6	*	54.8	63.5	31

NUMBER TESTED IN GRADE 8														
2012	2													457
2013	2	9	11	21	22	8	22			15	7	22		526
2014	2	16	13	28	31	10	28			27	4	31		474

NUMBER UNSATISFACTORY (Level 1)

Grade	Year	White	African Amer	Hispanic	Econ Disadv	Special Educ	LEP	At Risk	Migrant	Male	Female	All	District	Number Tested (All Students)
8	2012	*											191	
	2013	*	3	5	8	9	4	9		6	3	9	214	22
	2014	*	7	5	13	14	4	13		12	*	14	173	31

NUMBER TESTED IN GRADE 8														
2012	2													457
2013	2	9	11	21	22	8	22			15	7	22		526
2014	2	16	13	28	31	10	28			27	4	31		474

PERCENTAGE ADVANCED (Level 3)

Grade	Year	White	African Amer	Hispanic	Econ Disadv	Special Educ	LEP	At Risk	Migrant	Male	Female	All	District	Number Tested (All Students)
8	2012												0.4	
	2013	*	0.0	0.0	0.0	0.0	0.0	0.0		0.0	0.0	0.0	2.5	22
	2014	*	6.3	0.0	0.0	3.2	0.0	0.0		3.7	*	3.2	3.8	31

NUMBER TESTED IN GRADE 8														
2012														457
2013	2	9	11	21	22	8	22			15	7	22		526
2014	2	16	13	28	31	10	28			27	4	31		474

AVERAGE PERCENTAGE OF ITEMS CORRECT BY REPORTING CATEGORY

Grade	Year	REPORTING CATEGORY			
		1. Matter and Energy	2. Force, Motion, and Energy	3. Earth and Space	4. Organisms and Environments
8	2012				
	2013	54.5	63.6	61.6	58.7
	2014	54.8	62.3	51.3	55.1

PERCENTAGE SATISFACTORY (Levels 2 or 3)

Grade	Year	White	African Amer	Hispanic	Econ Disadv	Special Educ	LEP	At Risk	Migrant	Male	Female	All	District	Number Tested (All Students)
8	2012												52.3	0
	2013	*	50.0	45.5	50.0	52.4	62.5	52.4		57.1	42.9	52.4	59.5	21
	2014	*	53.3	57.1	53.6	51.6	60.0	50.0		51.9	*	51.6	59.3	31

NUMBER TESTED IN GRADE 8														
2012														451
2013	2	8	11	20	21	8	21			14	7	21		516
2014	2	15	14	28	31	10	28			27	4	31		479

NUMBER UNSATISFACTORY (Level 1)

Grade	Year	White	African Amer	Hispanic	Econ Disadv	Special Educ	LEP	At Risk	Migrant	Male	Female	All	District	Number Tested (All Students)
8	2012												215	0
	2013	*	4	6	10	10	3	10		6	4	10	209	21
	2014	*	7	6	13	15	4	14		13	*	15	195	31

NUMBER TESTED IN GRADE8														
2012														451
2013	2	8	11	20	21	8	21			14	7	21		516
2014	2	15	14	28	31	10	28			27	4	31		479

PERCENTAGE ADVANCED (Level 3)

Grade	Year	White	African Amer	Hispanic	Econ Disadv	Special Educ	LEP	At Risk	Migrant	Male	Female	All	District	Number Tested (All Students)
8	2012												2.9	0
	2013	*	0.0	0.0	0.0	0.0	0.0	0.0		0.0	0.0	0.0	1.9	21
	2014	*	6.7	0.0	0.0	3.2	0.0	0.0		3.7	*	3.2	3.5	31

NUMBER TESTED IN GRADE 8														
2012														451
2013	2	8	11	20	21	8	21			14	7	21		516
2014	2	15	14	28	31	10	28			27	4	31		479

AVERAGE PERCENTAGE OF ITEMS CORRECT BY REPORTING CATEGORY

Grade	Year	REPORTING CATEGORY			
		1. History	2. Geography and Culture	3. Government and Citizenship	4. Economics, Science, Technology, and Society
8	2012				
	2013	49.7	51.4	43.3	61.9
	2014	46.6	57.1	47.7	57.5

PERCENTAGE DEMONSTRATING IMPROVEMENT


Grade	Level 1 in 2013		Level 2 in 2013		Level 3 in 2013		Levels 1-3 in 2013	
	Number Tested Both Years	Percentage Improved in 2014	Number Tested Both Years	Percentage Improved in 2014	Number Tested Both Years	Percentage Improved in 2014	Number Tested Both Years	Percentage Improved in 2014
6	14	64.3	27	48.1	0		41	53.7
7	13	38.5	22	36.4	0		35	37.1
8	11	36.4	12	41.7	0		23	39.1
ALL	38	47.4	61	42.6	0		99	44.4

PERFORMANCE IN 2014

Grade 2013-14 (N Rated)	Domain:	Listening		Speaking		Writing		Reading		Composite	
	2014 Level	N	%	N	%	N	%	N	%	N	%
6 (267)	Beginning	9	3.4	11	4.1	23	8.6	34	12.8	14	5.3
	Intermediate	62	23.2	61	22.8	92	34.5	101	38.0	76	28.6
	Advanced	115	43.1	112	41.9	82	30.7	100	37.6	129	48.5
	Advanced High	81	30.3	83	31.1	70	26.2	31	11.7	47	17.7
7 (211)	Beginning	2	0.9	1	0.5	4	1.9	18	8.6	2	1.0
	Intermediate	15	7.1	29	13.7	43	20.4	73	34.8	42	20.0
	Advanced	108	51.2	114	54.0	96	45.5	88	41.9	105	50.0
	Advanced High	86	40.8	67	31.8	68	32.2	31	14.8	61	29.0
8 (149)	Beginning	3	2.0	4	2.7	2	1.3	7	4.7	1	0.7
	Intermediate	14	9.4	7	4.7	17	11.4	38	25.7	15	10.1
	Advanced	40	26.8	52	34.9	56	37.6	90	60.8	85	57.4
	Advanced High	92	61.7	86	57.7	74	49.7	13	8.8	47	31.8
ALL (627)	Beginning	14	2.2	16	2.6	29	4.6	59	9.5	17	2.7
	Intermediate	91	14.5	97	15.5	152	24.2	212	34.0	133	21.3
	Advanced	263	41.9	278	44.3	234	37.3	278	44.6	319	51.1
	Advanced High	259	41.3	236	37.6	212	33.8	75	12.0	155	24.8

**PROGRESSION FROM
2013 TO 2014**

Number Rated Both Years N (%) Progressed	2014 Level	2013 Level			
		Beg	Int	Adv	Adv High
251 65 (25.9%)	Beginning	10			
	Intermediate	6	63		
	Advanced	2	10	113	
	Advanced High	0	0	47	
196 77 (39.3%)	Beginning	2			
	Intermediate	2	35		
	Advanced	0	19	82	
	Advanced High	0	4	52	
139 64 (46.0%)	Beginning	0			
	Intermediate	2	11		
	Advanced	1	16	64	
	Advanced High	1	2	42	
586 206 (35.2%)	Beginning	12			
	Intermediate	10	109		
	Advanced	3	45	259	
	Advanced High	1	6	141	

 Indicates students who progressed at least one level from 2013 to 2014.

SEMESTER 1 TESTS

Number Tested	Averages				% Passing		District % Passing	
	% Items Correct	Scale Score	Course Mark	Course Mark (no ACP)	ACP	Course	ACP	Course

SPANISH FOR NATIVE SPEAKERS I

23	40.0	60.0	77.7	79.7	4.3	100.0	64.4	89.8
----	------	------	------	------	-----	-------	------	------

SPANISH FOR NATIVE SPEAKERS II

35	43.1	62.1	83.9	86.3	20.0	100.0	62.7	94.3
----	------	------	------	------	------	-------	------	------

SPANISH I

69	66.5	77.7	82.9	83.5	66.7	88.1	71.3	91.2
----	------	------	------	------	------	------	------	------

ALGEBRA I PRE-AP

45	55.6	70.4	85.6	87.3	57.8	97.8	65.2	96.3
----	------	------	------	------	------	------	------	------

ART 7

152	59.0	72.7	88.2	90.0	66.4	100.0	76.4	97.8
-----	------	------	------	------	------	-------	------	------

BEGINNING LANGUAGE ARTS 6 FOR ESL

1	*	*			*		45.0	*
---	---	---	--	--	---	--	------	---

BEGINNING LANGUAGE ARTS 8 FOR ESL

3	*	*	*	*	*	*	40.7	*
---	---	---	---	---	---	---	------	---

BEGINNING READING 6 FOR ESL

--	--	--	--	--	--	--	--	--

INTERMEDIATE LANGUAGE ARTS 6 FOR ESL

5	*	*	*	*	*	*	47.4	*
---	---	---	---	---	---	---	------	---

INTERMEDIATE LANGUAGE ARTS 7 FOR ESL

2	*	*	*	*	*	*	59.0	*
---	---	---	---	---	---	---	------	---

INTERMEDIATE READING 6 FOR ESL

4	*	*	*	*	*	*	54.7	*
---	---	---	---	---	---	---	------	---

SEMESTER 2 TESTS

Number Tested	Averages				% Passing		District % Passing	
	% Items Correct	Scale Score	Course Mark	Course Mark (no ACP)	ACP	Course	ACP	Course

SPANISH FOR NATIVE SPEAKERS I

22	42.1	61.4	76.9	78.6	18.2	95.5	68.1	84.6
----	------	------	------	------	------	------	------	------

SPANISH FOR NATIVE SPEAKERS II

35	51.4	67.6	80.9	82.4	40.0	97.1	69.8	88.6
----	------	------	------	------	------	------	------	------

SPANISH I

68	70.2	80.1	81.5	81.7	64.7	89.7	72.9	84.3
----	------	------	------	------	------	------	------	------

ALGEBRA I PRE-AP

--	--	--	--	--	--	--	--	--

ART 7

118	73.0	71.5	87.6	89.3	64.4	99.1	71.9	95.8
-----	------	------	------	------	------	------	------	------

BEGINNING LANGUAGE ARTS 6 FOR ESL

--	--	--	--	--	--	--	--	--

BEGINNING LANGUAGE ARTS 8 FOR ESL

4	*	*	*	*	*	*	49.6	*
---	---	---	---	---	---	---	------	---

BEGINNING READING 6 FOR ESL

1	*	*	*	*	*	*	44.4	*
---	---	---	---	---	---	---	------	---

INTERMEDIATE LANGUAGE ARTS 6 FOR ESL

8	45.8	63.9	73.3	74.3	25.0	100.0	58.3	94.3
---	------	------	------	------	------	-------	------	------

INTERMEDIATE LANGUAGE ARTS 7 FOR ESL

11	46.1	65.6	75.0	76.0	36.4	72.7	62.9	94.2
----	------	------	------	------	------	------	------	------

INTERMEDIATE READING 6 FOR ESL

--	--	--	--	--	--	--	--	--

SEMESTER 1 TESTS

Number Tested	Averages				% Passing		District % Passing	
	% Items Correct	Scale Score	Course Mark	Course Mark (no ACP)	ACP	Course	ACP	Course

LANGUAGE ARTS 6

365	47.4	68.5	74.1	74.7	45.8	79.6	51.1	88.5
-----	------	------	------	------	------	------	------	------

LANGUAGE ARTS 6 PRE-AP

75	62.9	72.2	82.3	83.4	77.3	97.3	79.1	98.0
----	------	------	------	------	------	------	------	------

LANGUAGE ARTS 7

401	44.6	70.3	77.0	77.8	52.6	90.2	52.3	86.0
-----	------	------	------	------	------	------	------	------

LANGUAGE ARTS 7 PRE-AP

55	61.0	74.0	85.5	86.8	69.1	100.0	72.1	96.8
----	------	------	------	------	------	-------	------	------

LANGUAGE ARTS 8

340	55.5	71.0	78.6	79.4	59.7	94.6	56.7	87.7
-----	------	------	------	------	------	------	------	------

LANGUAGE ARTS 8 PRE-AP

33	69.0	77.3	87.6	88.7	81.8	97.0	76.4	97.3
----	------	------	------	------	------	------	------	------

MATHEMATICS 6

372	37.1	70.9	77.1	77.8	50.0	80.5	45.6	86.2
-----	------	------	------	------	------	------	------	------

MATHEMATICS 6 PRE-AP

76	51.2	72.9	83.4	84.6	67.1	97.3	65.8	97.0
----	------	------	------	------	------	------	------	------

MATHEMATICS 7

409	39.4	70.7	76.6	77.3	54.5	87.1	49.3	84.8
-----	------	------	------	------	------	------	------	------

MATHEMATICS 7 PRE-AP

42	69.9	75.6	87.8	89.1	71.4	100.0	64.9	96.0
----	------	------	------	------	------	-------	------	------

MATHEMATICS 8

329	49.1	67.5	80.4	81.8	41.9	97.9	51.9	84.5
-----	------	------	------	------	------	------	------	------

SEMESTER 2 TESTS

Number Tested	Averages				% Passing		District % Passing	
	% Items Correct	Scale Score	Course Mark	Course Mark (no ACP)	ACP	Course	ACP	Course

LANGUAGE ARTS 6

360	51.6	70.4	78.0	78.9	55.6	92.1	56.8	85.3
-----	------	------	------	------	------	------	------	------

LANGUAGE ARTS 6 PRE-AP

79	50.9	68.6	85.7	87.6	48.1	100.0	64.3	96.1
----	------	------	------	------	------	-------	------	------

LANGUAGE ARTS 7

401	58.5	71.7	74.8	75.2	62.3	82.3	59.3	82.9
-----	------	------	------	------	------	------	------	------

LANGUAGE ARTS 7 PRE-AP

52	68.8	75.3	84.9	86.0	75.0	100.0	79.1	96.0
----	------	------	------	------	------	-------	------	------

LANGUAGE ARTS 8

335	62.9	74.1	79.8	80.4	74.3	91.4	72.6	85.9
-----	------	------	------	------	------	------	------	------

LANGUAGE ARTS 8 PRE-AP

36	64.3	76.2	88.9	90.3	83.3	100.0	75.8	96.8
----	------	------	------	------	------	-------	------	------

MATHEMATICS 6

370	40.5	69.8	75.2	75.8	46.8	75.5	42.2	81.1
-----	------	------	------	------	------	------	------	------

MATHEMATICS 6 PRE-AP

76	63.6	75.1	83.4	84.3	68.4	97.3	72.1	95.6
----	------	------	------	------	------	------	------	------

MATHEMATICS 7

420	47.0	70.6	75.7	76.3	54.0	77.6	50.1	79.6
-----	------	------	------	------	------	------	------	------

MATHEMATICS 7 PRE-AP

41	63.3	73.1	86.6	88.0	61.0	100.0	70.9	96.1
----	------	------	------	------	------	-------	------	------

MATHEMATICS 8

322	54.6	72.7	79.5	80.3	67.7	96.8	51.9	85.4
-----	------	------	------	------	------	------	------	------

SEMESTER 1 TESTS

Number Tested	Averages				% Passing		District % Passing	
	% Items Correct	Scale Score	Course Mark	Course Mark (no ACP)	ACP	Course	ACP	Course

MS BAND: LISTENING AND MUSIC ELEMENTS

78	74.4	88.5	90.0	76.9	97.2	63.8	98.2
----	------	------	------	------	------	------	------

MS HEALTH EDUCATION

159	55.5	72.2	81.9	83.0	64.2	94.2	70.0	92.0
-----	------	------	------	------	------	------	------	------

PHYSICAL EDUCATION 6

322	76.0	94.4	96.4	74.8	100.0	74.0	99.1
-----	------	------	------	------	-------	------	------

PHYSICAL EDUCATION 7 & 8

139	81.5	94.6	96.0	87.8	100.0	83.6	98.3
-----	------	------	------	------	-------	------	------

READING 6

439	55.4	68.1	76.8	77.7	51.0	87.7	56.3	90.6
-----	------	------	------	------	------	------	------	------

READING MASTERY 7

9	46.9	68.2	74.3	75.0	66.7	100.0	50.3	84.6
---	------	------	------	------	------	-------	------	------

READING MASTERY 8

53	49.5	67.1	72.5	73.1	45.3	76.9	63.1	85.0
----	------	------	------	------	------	------	------	------

SCIENCE 6

448	61.2	76.7	82.3	82.9	72.1	97.3	59.9	91.6
-----	------	------	------	------	------	------	------	------

SCIENCE 7

403	47.5	67.9	79.0	80.2	42.9	91.1	51.0	85.7
-----	------	------	------	------	------	------	------	------

SCIENCE 7 PRE-AP

57	61.7	72.7	85.8	87.3	61.4	98.2	75.2	97.8
----	------	------	------	------	------	------	------	------

SCIENCE 8 & SCIENCE 8 PRE-AP

372	53.4	68.9	77.9	78.8	50.5	93.2	64.6	90.4
-----	------	------	------	------	------	------	------	------

SEMESTER 2 TESTS

Number Tested	Averages				% Passing		District % Passing	
	% Items Correct	Scale Score	Course Mark	Course Mark (no ACP)	ACP	Course	ACP	Course

MS BAND: LISTENING AND MUSIC ELEMENTS

78	78.2	88.9	90.1	82.1	96.2	85.6	96.7
----	------	------	------	------	------	------	------

MS HEALTH EDUCATION

145	61.4	76.3	84.6	85.4	71.0	94.9	73.6	89.8
-----	------	------	------	------	------	------	------	------

PHYSICAL EDUCATION 6

338	78.0	91.9	93.5	88.5	100.0	82.8	99.0
-----	------	------	------	------	-------	------	------

PHYSICAL EDUCATION 7 & 8

183	79.9	96.7	98.5	85.8	99.4	88.6	97.2
-----	------	------	------	------	------	------	------

READING 6

438	50.1	69.4	78.4	79.4	50.7	90.7	55.7	86.3
-----	------	------	------	------	------	------	------	------

READING MASTERY 7

26	47.7	68.0	72.5	72.9	50.0	79.2	59.4	81.4
----	------	------	------	------	------	------	------	------

READING MASTERY 8

92	60.0	73.3	75.7	76.0	73.9	88.5	71.7	85.4
----	------	------	------	------	------	------	------	------

SCIENCE 6

448	67.4	79.2	82.3	82.7	80.4	89.7	57.7	87.5
-----	------	------	------	------	------	------	------	------

SCIENCE 7

405	66.1	79.3	80.6	80.7	81.7	90.6	71.7	85.1
-----	------	------	------	------	------	------	------	------

SCIENCE 7 PRE-AP

55	72.7	79.0	86.6	87.4	83.6	94.4	81.2	96.9
----	------	------	------	------	------	------	------	------

SCIENCE 8 & SCIENCE 8 PRE-AP

376	60.6	72.5	82.0	83.0	65.7	97.8	64.5	88.8
-----	------	------	------	------	------	------	------	------

SEMESTER 1 TESTS

Number Tested	Averages				% Passing		District % Passing	
	% Items Correct	Scale Score	Course Mark	Course Mark (no ACP)	ACP	Course	ACP	Course

SOCIAL STUDIES 6

429	46.7	66.7	78.5	79.8	38.7	94.9	42.8	90.4
-----	------	------	------	------	------	------	------	------

SOCIAL STUDIES 6 PRE-AP

15	57.3	67.1	85.7	87.8	53.3	100.0	83.5	99.2
----	------	------	------	------	------	-------	------	------

TECHNOLOGY APPLICATIONS

235	53.8	72.3	83.5	84.7	56.6	88.7	60.4	93.7
-----	------	------	------	------	------	------	------	------

TEXAS STUDIES 7

366	46.0	70.0	77.4	78.3	46.7	86.5	49.3	87.3
-----	------	------	------	------	------	------	------	------

TEXAS STUDIES 7 PRE-AP

63	57.0	67.8	79.4	80.7	38.1	96.8	68.1	97.3
----	------	------	------	------	------	------	------	------

U.S. STUDIES 8

315	49.6	70.9	76.6	77.3	49.8	83.3	50.5	85.9
-----	------	------	------	------	------	------	------	------

U.S. STUDIES 8 PRE-AP

31	67.3	75.5	85.6	86.7	77.4	100.0	70.3	97.8
----	------	------	------	------	------	-------	------	------

SEMESTER 2 TESTS

Number Tested	Averages				% Passing		District % Passing	
	% Items Correct	Scale Score	Course Mark	Course Mark (no ACP)	ACP	Course	ACP	Course

SOCIAL STUDIES 6

429	60.8	73.9	81.4	82.2	66.2	96.9	56.1	86.5
-----	------	------	------	------	------	------	------	------

SOCIAL STUDIES 6 PRE-AP

17	71.8	71.8	84.6	86.0	64.7	100.0	86.4	98.1
----	------	------	------	------	------	-------	------	------

TECHNOLOGY APPLICATIONS

253	58.5	74.6	83.7	84.7	70.8	93.4	65.5	89.7
-----	------	------	------	------	------	------	------	------

TEXAS STUDIES 7

372	48.6	72.5	77.5	78.1	61.8	80.2	59.9	84.9
-----	------	------	------	------	------	------	------	------

TEXAS STUDIES 7 PRE-AP

87	65.2	75.8	84.3	85.2	73.6	92.0	79.0	95.9
----	------	------	------	------	------	------	------	------

U.S. STUDIES 8

314	58.1	72.1	78.7	79.4	60.5	90.4	54.3	84.4
-----	------	------	------	------	------	------	------	------

U.S. STUDIES 8 PRE-AP

47	72.4	75.6	87.2	88.4	68.1	100.0	69.5	95.0
----	------	------	------	------	------	-------	------	------