

# DATA PACKET

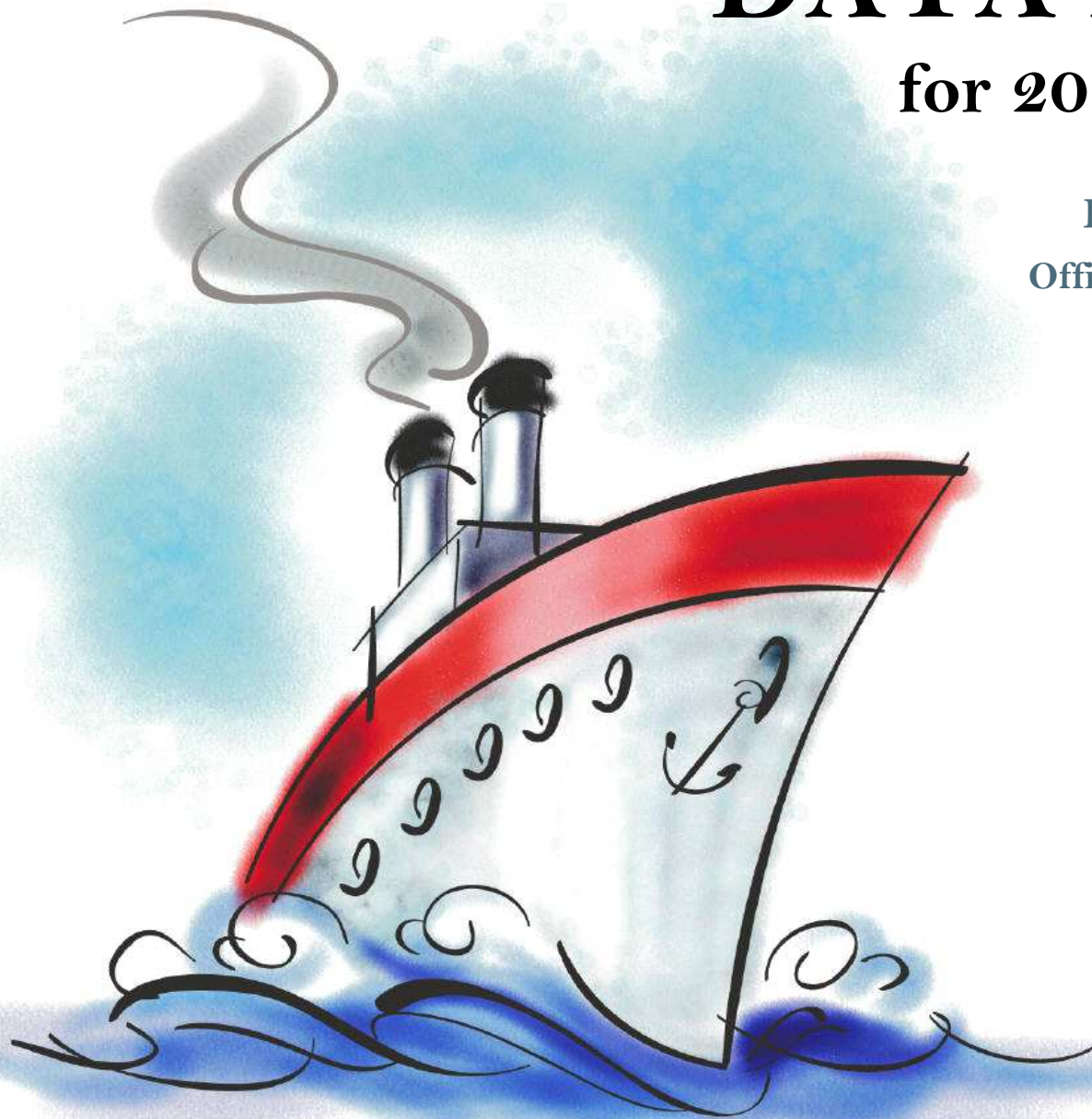
for 2014-15 planning

Evaluation & Assessment  
Office of Institutional Research  
<http://mydata.dallasisd.org>  
[OIR@dallasisd.org](mailto:OIR@dallasisd.org)

September 5, 2014

School Number 24

**NORTH DALLAS  
HIGH SCHOOL**



Dallas Independent School District

2. Contents ..... Table of Contents

**STUDENTS AND STAFF**

- 6. Summary ..... Summary of Student and Teacher Statistics
- 8. Enroll (2) ..... Enrollment Statistics by Select Student Group
- 10. Teachers ..... Teacher Statistics

**STAAR (English)**

- 11. Reading (EOC) .. STAAR EOC Reading
- 19. Science (EOC) ... STAAR EOC Science

**STAAR L**

- 27. Math (EOC) ..... STAAR L EOC Mathematics

**STAAR M**

- 35. Reading (EOC) .. STAAR M EOC Reading
- 43. Science (EOC) ... STAAR M EOC Science

**ENGLISH PROFICIENCY**

- 51. WMLS ..... Woodcock-Muñoz Language Survey

**COLLEGE READINESS**

- 53. SAT/ACT ..... SAT/ACT Average Scores for Seniors
- 55. AP ..... Advanced Placement (AP) Exams

**LOCAL ASSESSMENT**

- 56. ACP ..... Assessments of Course Performance

3. Notes ..... Notes and Data Descriptions

- 7. Enroll (1) ..... Enrollment Statistics by Ethnicity
- 9. Attendance ..... Student Attendance Statistics

- 15. Math (EOC) ..... STAAR EOC Mathematics
- 23. SS (EOC) ..... STAAR EOC Social Studies

31. Science (EOC) ... STAAR L EOC Science

- 39. Math (EOC) ..... STAAR M EOC Mathematics
- 47. SS (EOC) ..... STAAR M EOC Social Studies

52. TELPAS ..... Texas English Language Proficiency Assessment System

54. PSAT ..... PSAT Average Scores

## **2013-14 SCHOOL SUMMARY**

- Student percentages are computed as the percentage of total student enrollment.
- Additional statistics are available in ENROLLMENT and TEACHER reports.
- Race/ethnic categories are based on the newest federal standards for ethnicity and race reporting, though some categories have been combined because of small group sizes. Students reporting their ethnicity as “Hispanic” are not counted in any race category.
- “Economically disadvantaged” students are those who qualify for free or reduced-price lunch through the federal government's program.
- Teacher demographics and assignments are from the district's Public Education Information Management System (PEIMS) submission to the TEA.

## **ENROLLMENT**

- Statistics are based on the school's enrollment at the end of the fifth six-weeks grading period.
- “Economically disadvantaged” students are those receiving free or reduced-price lunches.
- “New” students were new to the district in 2013-14. They are counted as new if not enrolled in a district campus before the last day of the 2012-13 school year.
- The “retention rate” is the percentage of students in the same grade at the end of the fifth six-weeks grading period for both 2012-13 and 2013-14.

## **ATTENDANCE**

- Statistics are based on student attendance through the end of the sixth six-weeks grading period (the end of the school year).
- “Average daily membership” is the total number of school days students were ENROLLED divided by the number of school days in the year.
- The “average daily attendance” number (N) is the total number of school days students were IN ATTENDANCE divided by the number of school days in the year. The “average daily attendance” percentage (%) is the average attendance rate. For each student, the number of days attended is divided by the number of days enrolled. This rate is then averaged across students.
- The number (N) of “yearly transactions” is the total number of transfer and withdrawal transactions in the school year. The percentage (%) is the number of transactions divided by “average daily membership,” which gives (on average) the percentage of the membership associated with a transaction.
- “Continuously enrolled” students are enrolled and in attendance for a minimum number of instructional days in at least one course at the school between the beginning of the school year and the first day of the main STAAR testing period. The minimum number varies depending on the school year's calendar, but is typically around 130 days.
- The “stability rate” is the number of continuously enrolled students divided by “average daily membership.”

## **TEACHERS**

- Teacher demographics and assignments are from the district's Public Education Information Management System (PEIMS) submission to the TEA.
- Teacher absences counted towards the average DO NOT include vacation days (coded as VAC in personnel database).
- Retention rate for a school year is computed with numerator “# of teachers assigned to the school both that year and the year prior” and denominator “# of teachers assigned to the school for the prior year.” That is, the retention rate is the percentage of the prior year's teachers who continued at the school.

### **STAAR, STAAR L, and STAAR M**

- Cells marked with an asterisk (\*) indicate five or fewer students were tested. Blank cells indicate no students were tested.
- Student group assignments are from the district's Public Education Information Management System (PEIMS) submission to the TEA.
- STAAR statistics are based on results from standard STAAR only. STAAR L and STAAR M statistics are computed separately, following TEA reporting practice.
- “Percentage Satisfactory” is the percentage of students achieving Level 2 (Satisfactory) or Level 3 (Advanced).
- Statistics by reporting category are averages for all students (across student groups and genders).
- An “average percentage correct” is computed as follows: for each student, divide the number of items correctly answered by the total number of items in the test section, then average the resulting percentages across all students. For short answers on EOC English tests, an “average rating” is presented; STAAR EOC short answers are rated on a scale of 0 to 3. For written compositions on writing tests, “average score points” is presented. Additional details provided in report footnotes.
- EOC statistics are based on first administration scores from the fall and spring administrations.
- Beginning in 2014, EOC Reading and EOC Writing tests were replaced with EOC English tests.

### **TELPAS**

- Students are counted as having tested if any one of the four domains is rated. Because a TELPAS composite rating is not assigned to a student unless all four domains are rated, the number of TELPAS composite ratings may be smaller than the number tested.
- If a student's composite rating did not increase at least one level from 2013 to 2014, the TEA did not report the 2013 composite rating.
- If a student is rated as advanced high in 2014, the TEA does not differentiate between the advanced and advanced high levels from 2013.

## **COLLEGE READINESS**

- Cells marked with an asterisk (\*) indicate five or fewer students were tested. Blank cells indicate no students were tested.
- For SAT and ACT, “Percent Tested” is computed with “Number Tested” as numerator and, as denominator, Grade 12 “Enrollment” as reported in Enrollment (1) and Enrollment (2) reports. For PSAT, the denominator for “Percent Tested” is grade-level enrollment as reported in Enrollment reports.
- Score summaries for SAT and ACT contain all scores available for the school year at the time of publication.
- The SAT and ACT are administered throughout the school year by The College Board and ACT, Inc. A student takes the SAT or ACT at the time and location of her choice, and she may take either test multiple times. If a student has results from multiple administrations, only the latest is used.
- SAT scores range from 200 to 800. ACT scores range from 0 to 36.
- SAT College and Career Readiness Benchmarks are the same for each subject (critical reading, mathematics, and writing): 500. The SAT benchmark indicates a 65 percent likelihood of achieving a B- average or higher during the first year of college. ACT's College Readiness Benchmarks are the minimum scores that indicate a 50 percent chance of earning a B or better (and 75 percent chance of earning a C or better) in the corresponding college course. The ACT benchmarks are available for four subject-area tests. They are English: 18, reading: 21, mathematics: 22, and science: 24.
- PSAT scores range from 20 to 80. PSAT is administered once each year in October. District students taking PSAT are tested at their schools. Statistics for a grade level are based on all students in that grade level in the fall with a PSAT score for that year. (Students' scores will be used in multiple statistics if they took the PSAT in multiple years.)
- PSAT/NMSQT College and Career Readiness Benchmarks are the scores associated with a 65 percent likelihood of achieving a B- first-year college GPA. The College Board has determined PSAT benchmark scores separately for grades 10 and 11 in each subject. For grade 10, the benchmarks are critical reading: 42, mathematics: 44, writing: 42. For grade 11, the benchmarks are critical reading: 45, mathematics: 47, writing: 45. There are no benchmarks for grade 9.
- AP scores range from 1 to 5; a minimum of 3 is needed to pass.

## **ACP**

- Cells marked with an asterisk (\*) indicate five or fewer students were tested. Blank cells indicate no students were tested.
- The ACPs are semester exams administered in grades K-12. Not all courses have ACPs. In MIDDLE and HIGH school, ACP results account for a portion of students' final semester grades (10% and 15% respectively). “Average course mark (no ACP)” is computed from semester grades before factoring in ACP scores. In ELEMENTARY school, ACP results account for 5% of students' semester grades for core courses; course-grade statistics are not reported in data packets for elementary grades.
- Raw scores on the ACPs (percentage of items correct) are scaled each year to maintain similar annual passing rates for the district.
- A scale score of at least 70 percent is required to pass an ACP. A course mark of at least 70 percent is required to pass a course.
- Statistics are computed separately for Semester 1 and Semester 2 tests; time of administration during the school year is not relevant. Results from tests written for different school years are not combined.

**STUDENT ENROLLMENT**

Grade	Enrollment
9	342
10	342
11	251
12	264
ALL	1,199

**STUDENT AND TEACHER RACE/ETHNICITY**

Ethnicity/Race	Students		Teachers	
	Number	Percent	Number	Percent
Black/African American	190	15.8	35	35.4
American Indian/Alaska Native	6	0.5	*	*
Asian/Hawaiian/Pacific Islander	46	3.8	*	*
Hispanic	930	77.6	16	16.2
White	24	2.0	38	38.4
Multiple	3	0.3	1	1.0
Other* (teachers only)	—	—	9	9.1
Not reported (students only)	0	0.0	—	—

\*For teachers, "Other" category includes American Indian/Alaska Native and Asian/Hawaiian/Pacific Islander.

**SELECT STUDENT GROUP ENROLLMENT**

Group	Number	Percent
At-Risk	1,027	85.7
Economically disadvantaged	1,016	84.7
Limited English proficient (LEP)	318	26.5
Special education	129	10.8
Talented and Gifted (TAG)	128	10.7

Grade	Year	Enrollment	African American		American Indian		Asian		Hispanic		White		Multiple category	
			N	%	N	%	N	%	N	%	N	%	N	%
9	2012	363	59	16.3	2	0.6	16	4.4	279	76.9	6	1.7	1	0.3
	2013	400	63	15.8	2	0.5	15	3.8	311	77.8	6	1.5	3	0.8
	2014	342	66	19.3	1	0.3	10	2.9	257	75.1	8	2.3	0	0.0
10	2012	297	32	10.8	2	0.7	9	3.0	248	83.5	5	1.7	1	0.3
	2013	281	43	15.3	2	0.7	14	5.0	215	76.5	7	2.5	0	0.0
	2014	342	51	14.9	2	0.6	11	3.2	271	79.2	5	1.5	2	0.6
11	2012	314	39	12.4	3	1.0	16	5.1	248	79.0	8	2.5	0	0.0
	2013	275	29	10.5	4	1.5	10	3.6	226	82.2	4	1.5	2	0.7
	2014	251	39	15.5	1	0.4	15	6.0	191	76.1	5	2.0	0	0.0
12	2012	274	35	12.8	1	0.4	12	4.4	222	81.0	4	1.5	0	0.0
	2013	310	43	13.9	2	0.6	13	4.2	247	79.7	5	1.6	0	0.0
	2014	264	34	12.9	2	0.8	10	3.8	211	79.9	6	2.3	1	0.4
9-12	2012	1,248	165	13.2	8	0.6	53	4.2	997	79.9	23	1.8	2	0.2
	2013	1,266	178	14.1	10	0.8	52	4.1	999	78.9	22	1.7	5	0.4
	2014	1,199	190	15.8	6	0.5	46	3.8	930	77.6	24	2.0	3	0.3

Grade	Year	Enrollment	Economically Disadvantaged		LEP		Special Education		At Risk		TAG		New (to District)		Gender		Retention Rate (%)
			N	%	N	%	N	%	N	%	N	%	N	%	% Male	% Female	
9	2012	363	338	93.1	118	32.5	33	9.1	284	78.2	20	5.5	61	16.8	53.4	46.6	7.2
	2013	400	365	91.3	112	28.0	38	9.5	308	77.0	30	7.5	44	11.0	50.8	49.3	6.3
	2014	342	293	85.7	105	30.7	40	11.7	291	85.1	43	12.6	47	13.7	56.7	43.3	3.5
10	2012	297	256	86.2	97	32.7	38	12.8	232	78.1	22	7.4	25	8.4	50.5	49.5	2.4
	2013	281	258	91.8	78	27.8	25	8.9	220	78.3	16	5.7	24	8.5	49.8	50.2	1.8
	2014	342	291	85.1	93	27.2	31	9.1	296	86.5	39	11.4	10	2.9	48.8	51.2	3.8
11	2012	314	260	82.8	87	27.7	29	9.2	249	79.3	31	9.9	24	7.6	47.8	52.2	1.6
	2013	275	234	85.1	58	21.1	30	10.9	225	81.8	21	7.6	13	4.7	54.2	45.8	1.8
	2014	251	216	86.1	65	25.9	20	8.0	214	85.3	21	8.4	16	6.4	47.0	53.0	2.8
12	2012	274	226	82.5	64	23.4	28	10.2	223	81.4	20	7.3	12	4.4	52.6	47.4	3.6
	2013	310	266	85.8	84	27.1	32	10.3	254	81.9	27	8.7	11	3.5	48.4	51.6	6.5
	2014	264	216	81.8	55	20.8	38	14.4	226	85.6	25	9.5	10	3.8	51.9	48.1	8.7
9-12	2012	1,248	1,080	86.5	366	29.3	128	10.3	988	79.2	93	7.5	122	9.8	51.1	48.9	3.8
	2013	1,266	1,123	88.7	332	26.2	125	9.9	1,007	79.5	94	7.4	92	7.3	50.7	49.3	4.3
	2014	1,199	1,016	84.7	318	26.5	129	10.8	1,027	85.7	128	10.7	83	6.9	51.4	48.6	4.6



Grade	Year	Average Daily Membership		Average Daily Attendance				Yearly Transactions			Continuously Enrolled		Stability Rate	
		N	District	N	%	District N	District %	N	%	District %	N	District	%	District
9	2012	364	10,922	340	93.5	10,196	93.3	92	25.3	27.8	289	8,726	79.5	79.9
	2013	411	11,153	389	94.5	10,499	94.1	90	21.9	28.3	345	9,388	83.9	84.2
	2014	351	10,850	328	93.4	10,242	94.4	93	26.5	28.4	279	9,091	79.6	83.8
10	2012	306	9,007	288	93.9	8,431	93.6	58	18.9	20.6	251	7,332	81.9	81.4
	2013	282	9,331	265	94.0	8,812	94.4	56	19.9	20.5	243	8,042	86.3	86.2
	2014	350	9,898	331	94.6	9,367	94.6	56	16.0	20.3	307	8,628	87.7	87.2
11	2012	321	8,913	298	92.8	8,306	93.2	47	14.6	15.9	261	7,319	81.3	82.1
	2013	289	8,457	270	93.5	7,949	94.0	29	10.0	18.9	244	7,295	84.4	86.3
	2014	264	8,467	248	93.9	8,005	94.5	37	14.0	18.1	231	7,476	87.4	88.3
12	2012	287	8,178	249	87.0	7,571	92.6	43	15.0	12.6	189	6,742	65.9	82.4
	2013	316	8,199	292	92.6	7,661	93.4	21	6.6	14.9	278	7,269	88.0	88.7
	2014	262	7,886	244	93.2	7,407	93.9	27	10.3	15.2	215	7,027	82.1	89.1
9-12	2012	1,278	37,021	1,175	92.0	34,504	93.2	240	18.8	19.8	990	30,119	77.5	81.4
	2013	1,298	37,140	1,216	93.7	34,922	94.0	196	15.1	21.2	1,110	31,994	85.5	86.1
	2014	1,227	37,101	1,151	93.8	35,021	94.4	213	17.4	21.1	1,032	32,222	84.1	86.8

**Teachers: 99**

**DISTRIBUTIONS**

Ethnicity/Race	Number	Percentage
African American	35	35.4
Hispanic	16	16.2
White	38	38.4
Multiple	1	1.0
Other	9	9.1

Gender	Number	Percentage
Female	54	54.5
Male	45	45.5

**ATTENDANCE / RETENTION**

	Average Absences	Retention Rate
2011-12	7.5	—
2012-13	7.0	65.0
2013-14	9.0	71.4

**YEARS EXPERIENCE**

Years	Number	Percentage
Beginning (0)	7	7.1
1	8	8.1
2	2	2.0
3	5	5.1
4	5	5.1
5	10	10.1
1-3	15	15.2
More than 3	77	77.8
1 - 5	30	30.3
6 - 10	19	19.2
11 - 20	23	23.2
More than 20	20	20.2

## PERCENTAGE SATISFACTORY (Levels 2 and 3)

Test	Year	White	African Amer	Hispanic	Econ Disadv	Special Educ	LEP	At Risk	Migrant	Male	Female	All	District
ENGLISH I	2012												
	2013												
	2014	37.5	38.5	38.5	38.3	8.6	18.6	31.6		34.4	45.9	39.6	50.9
Tests Taken	2012												
	2013												
	2014	8	91	382	423	35	172	399		276	222	498	13,789
ENGLISH II	2012												
	2013												
	2014	*	41.9	49.5	48.1	13.3	27.7	39.4		38.8	58.7	49.3	54.8
Tests Taken	2012												
	2013												
	2014	3	62	299	322	15	101	282		178	201	379	10,943

## NUMBER UNSATISFACTORY (Level 1)

Test	Year	White	African Amer	Hispanic	Econ Disadv	Special Educ	LEP	At Risk	Migrant	Male	Female	All	District
ENGLISH I	2012												
	2013												
	2014	5	56	235	261	32	140	273		181	120	301	6,774
Tests Taken	2012												
	2013												
	2014	8	91	382	423	35	172	399		276	222	498	13,789
ENGLISH II	2012												
	2013												
	2014	*	36	151	167	13	73	171		109	83	192	4,948
Tests Taken	2012												
	2013												
	2014	3	62	299	322	15	101	282		178	201	379	10,943

## PERCENTAGE ADVANCED (Level 3)

Test	Year	White	African Amer	Hispanic	Econ Disadv	Special Educ	LEP	At Risk	Migrant	Male	Female	All	District
ENGLISH I	2012												
	2013												
	2014	12.5	0.0	0.5	1.2	0.0	0.0	0.3		1.1	0.9	1.0	3.2
Tests Taken	2012												
	2013												
	2014	8	91	382	423	35	172	399		276	222	498	13,789
ENGLISH II	2012												
	2013												
	2014	*	1.6	0.0	0.0	0.0	0.0	0.0		0.0	1.0	0.5	2.7
Tests Taken	2012												
	2013												
	2014	3	62	299	322	15	101	282		178	201	379	10,943

## AVERAGE PERCENTAGE OF ITEMS CORRECT BY REPORTING CATEGORY

ENGLISH I	1. Understanding & Analysis Across Genres	1. Average Rating Short Answer #1 <sup>1</sup>	1. Average Rating Short Answer #2 <sup>1</sup>	2. Understanding & Analysis of Literary Texts	3. Understanding & Analysis of Informational Texts	4. Expository Composition <sup>2</sup>	5. Revision	6. Editing
2012								
2013								
2014	59.1	1.0	1.1	50.1	52.8	3.8	60.0	48.8

ENGLISH II	1. Understanding & Analysis Across Genres	1. Average Rating Short Answer #1 <sup>1</sup>	1. Average Rating Short Answer #2 <sup>1</sup>	2. Understanding & Analysis of Literary Texts	3. Understanding & Analysis of Informational Texts	4. Persuasive Composition <sup>2</sup>	5. Revision	6. Editing
2012								
2013								
2014	72.4	1.0	1.3	49.3	60.7	4.1	60.7	64.4

<sup>1</sup>Short answer rating scale: 0=Insufficient; 1=Partially Sufficient; 2=Sufficient; 3=Exemplary

<sup>2</sup>Average score points (0-8). A composition is rated twice on a scale of 1 to 4, and the ratings are summed to determine score points for the composition. Score point scale: 0=Nonscorable; 2=Very Limited; 3=between Very Limited and Basic; 4=Basic; 5=between Basic and Satisfactory; 6=Satisfactory; 7=between Satisfactory and Accomplished; 8=Accomplished

## PERCENTAGE SATISFACTORY (Levels 2 or 3)

Test	Year	White	African Amer	Hispanic	Econ Disadv	Special Educ	LEP	At Risk	Migrant	Male	Female	All	District
<b>ALGEBRA I</b>	<b>2012</b>	*	51.5	72.2	68.5	31.3	65.8	63.6		66.9	69.7	68.2	74.7
	<b>2013</b>	*	47.8	73.8	69.0	60.0	56.9	63.4		65.6	72.8	69.3	72.5
	<b>2014</b>	*	60.0	69.0	69.5	50.0	69.6	66.2		68.7	66.9	67.9	78.0
Tests Taken	<b>2012</b>	3	33	187	213	16	73	186		124	109	233	8,795
	<b>2013</b>	4	46	206	242	10	65	186		128	136	264	9,251
	<b>2014</b>	5	65	200	239	24	79	204		150	127	277	9,524

## NUMBER UNSATISFACTORY (Level 1)

Test	Year	White	African Amer	Hispanic	Econ Disadv	Special Educ	LEP	At Risk	Migrant	Male	Female	All	District
<b>ALGEBRA I</b>	<b>2012</b>	*	16	52	67	11	25	63		41	33	74	2,226
	<b>2013</b>	*	24	54	75	4	28	68		44	37	81	2,540
	<b>2014</b>	*	26	62	73	12	24	69		47	42	89	2,099
Tests Taken	<b>2012</b>	3	33	187	213	16	73	186		124	109	233	8,795
	<b>2013</b>	4	46	206	242	10	65	186		128	136	264	9,251
	<b>2014</b>	5	65	200	239	24	79	204		150	127	277	9,524



## PERCENTAGE ADVANCED (Level 3)

Test	Year	White	African Amer	Hispanic	Econ Disadv	Special Educ	LEP	At Risk	Migrant	Male	Female	All	District
<b>ALGEBRA I</b>	<b>2012</b>	*	0.0	0.5	0.5	0.0	0.0	0.0		0.8	0.0	0.4	7.0
	<b>2013</b>	*	0.0	2.4	2.1	0.0	1.5	1.1		2.3	1.5	1.9	8.6
	<b>2014</b>	*	1.5	2.5	2.5	0.0	3.8	2.5		2.7	2.4	2.5	9.9
Tests Taken	<b>2012</b>	3	33	187	213	16	73	173		124	109	233	8,795
	<b>2013</b>	4	46	206	242	10	65	186		128	136	264	9,251
	<b>2014</b>	5	65	200	239	24	79	204		150	127	277	9,524

## AVERAGE PERCENTAGE OF ITEMS CORRECT BY REPORTING CATEGORY

<b>ALGEBRA I</b>	1. Functional Relationships	2. Properties and Attributes of Functions	3. Linear Functions	4. Linear Equations and Inequalities	5. Quadratic and Other Nonlinear Functions
<b>2012</b>	46.7	42.4	43.5	38.5	45.0
<b>2013</b>	46.3	41.0	43.3	49.4	44.3
<b>2014</b>	45.0	42.6	48.8	43.2	43.0

## PERCENTAGE SATISFACTORY (Levels 2 and 3)

Test	Year	White	African Amer	Hispanic	Econ Disadv	Special Educ	LEP	At Risk	Migrant	Male	Female	All	District
<b>BIOLOGY</b>	<b>2012</b>	*	73.8	85.1	84.6	56.3	75.3	77.6		82.9	84.9	83.9	82.9
	<b>2013</b>	*	81.6	86.0	85.0	75.0	72.2	79.5		81.5	90.0	85.9	84.4
	<b>2014</b>	100.0	92.3	85.1	88.1	72.0	79.3	87.1		83.1	92.9	87.4	89.8
Tests Taken	<b>2012</b>	4	42	228	266	16	81	192		146	146	292	8,881
	<b>2013</b>	5	49	257	301	12	72	205		157	170	327	9,374
	<b>2014</b>	6	65	235	270	25	82	224		177	140	317	9,672

## NUMBER UNSATISFACTORY (Level 1)

Test	Year	White	African Amer	Hispanic	Econ Disadv	Special Educ	LEP	At Risk	Migrant	Male	Female	All	District
<b>BIOLOGY</b>	<b>2012</b>	*	11	34	41	7	20	43		25	22	47	1,522
	<b>2013</b>	*	9	36	45	3	20	42		29	17	46	1,467
	<b>2014</b>	0	5	35	32	7	17	29		30	10	40	987
Tests Taken	<b>2012</b>	4	42	228	266	16	81	192		146	146	292	8,881
	<b>2013</b>	5	49	257	301	12	72	205		157	170	327	9,374
	<b>2014</b>	6	65	235	270	25	82	224		177	140	317	9,672

## PERCENTAGE ADVANCED (Level 3)

Test	Year	White	African Amer	Hispanic	Econ Disadv	Special Educ	LEP	At Risk	Migrant	Male	Female	All	District
<b>BIOLOGY</b>	<b>2012</b>	*	0.0	1.8	1.5	0.0	0.0	1.0		2.1	1.4	1.7	4.8
	<b>2013</b>	*	2.0	3.1	3.3	0.0	2.8	1.5		3.2	2.9	3.1	7.5
	<b>2014</b>	16.7	0.0	3.0	3.0	0.0	1.2	1.8		3.4	2.9	3.2	7.5
Tests Taken	<b>2012</b>	4	42	228	266	16	81	192		146	146	292	8,881
	<b>2013</b>	5	49	257	301	12	72	205		157	170	327	9,374
	<b>2014</b>	6	65	235	270	25	82	224		177	140	317	9,672

## AVERAGE PERCENTAGE OF ITEMS CORRECT BY REPORTING CATEGORY

<b>BIOLOGY</b>	1. Cell Structure and Function	2. Mechanisms of Genetics	3. Biological Evolution and Classification	4. Biological Processes and Systems	5. Interdependence within Environmental Systems
<b>2012</b>	47.3	46.8	54.7	47.1	51.4
<b>2013</b>	55.0	48.9	56.3	54.1	57.0
<b>2014</b>	47.7	55.7	59.7	58.2	47.4

## PERCENTAGE SATISFACTORY (Levels 2 or 3)

Test	Year	White	African Amer	Hispanic	Econ Disadv	Special Educ	LEP	At Risk	Migrant	Male	Female	All	District
U.S. HISTORY	2012												*
	2013												90.2
	2014	*	85.3	86.7	87.2	60.0	82.0	84.9		86.5	88.2	87.4	92.0
Tests Taken	2012												4
	2013												51
	2014	3	34	181	195	10	50	159		111	119	230	7,801

## NUMBER UNSATISFACTORY (Level 1)

Test	Year	White	African Amer	Hispanic	Econ Disadv	Special Educ	LEP	At Risk	Migrant	Male	Female	All	District
U.S. HISTORY	2012												*
	2013												5
	2014	*	5	24	25	4	9	24		15	14	29	625
Tests Taken	2012												4
	2013												51
	2014	3	34	181	195	10	50	159		111	119	230	7,801



## PERCENTAGE ADVANCED (Level 3)

Test	Year	White	African Amer	Hispanic	Econ Disadv	Special Educ	LEP	At Risk	Migrant	Male	Female	All	District
U.S. HISTORY	2012												*
	2013												2.0
	2014	*	2.9	0.6	1.5	0.0	0.0	0.0		0.9	2.5	1.7	10.3
Tests Taken	2012												4
	2013												51
	2014	3	34	181	195	10	50	159		111	119	230	7,801

## AVERAGE PERCENTAGE OF ITEMS CORRECT BY REPORTING CATEGORY

U.S. HISTORY	1. History	2. Geography and Culture	3. Government and Citizenship	4. Economics, Science, Technology, and Society
2012				
2013				
2014	50.6	60.3	55.8	61.5

## PERCENTAGE SATISFACTORY (Levels 2 and 3)

Test	Year	White	African Amer	Hispanic	Econ Disadv	Special Educ	LEP	At Risk	Migrant	Male	Female	All	District
<b>ALGEBRA I</b>	<b>2012</b>												42.9
	<b>2013</b>			61.5	64.3		66.7	66.7		66.7	*	66.7	51.2
	<b>2014</b>	*	*	78.9	83.3		76.2	76.2		80.0	72.7	76.2	42.9
Tests Taken	<b>2012</b>												282
	<b>2013</b>			13	14		15	15		12	3	15	320
	<b>2014</b>	1	1	19	18		21	21		10	11	21	471

## NUMBER UNSATISFACTORY (Level 1)

Test	Year	White	African Amer	Hispanic	Econ Disadv	Special Educ	LEP	At Risk	Migrant	Male	Female	All	District
<b>ALGEBRA I</b>	<b>2012</b>												161
	<b>2013</b>			5	5		5	5		4	*	5	156
	<b>2014</b>	*	*	4	3		5	5		2	3	5	269
Tests Taken	<b>2012</b>												282
	<b>2013</b>			13	14		15	15		12	3	15	320
	<b>2014</b>	1	1	19	18		21	21		10	11	21	471

## PERCENTAGE ADVANCED (Level 3)

Test	Year	White	African Amer	Hispanic	Econ Disadv	Special Educ	LEP	At Risk	Migrant	Male	Female	All	District
<b>ALGEBRA I</b>	<b>2012</b>												2.5
	<b>2013</b>			7.7	7.1		6.7	6.7		8.3	*	6.7	4.1
	<b>2014</b>	*	*	0.0	0.0		0.0	0.0		0.0	0.0	0.0	2.3
Tests Taken	<b>2012</b>												282
	<b>2013</b>			13	14		15	15		12	3	15	320
	<b>2014</b>	1	1	19	18		21	21		10	11	21	471

## AVERAGE PERCENTAGE OF ITEMS CORRECT BY REPORTING CATEGORY

<b>ALGEBRA I</b>	1. Functional Relationships	2. Properties and Attributes of Functions	3. Linear Functions	4. Linear Equations and Inequalities	5. Quadratic and Other Nonlinear Functions
<b>2012</b>					
<b>2013</b>	48.3	47.8	45.3	28.0	39.3
<b>2014</b>	66.7	50.4	50.5	41.4	45.0

## PERCENTAGE SATISFACTORY (Levels 2 and 3)

Test	Year	White	African Amer	Hispanic	Econ Disadv	Special Educ	LEP	At Risk	Migrant	Male	Female	All	District
<b>BIOLOGY</b>	<b>2012</b>												25.5
	<b>2013</b>			57.1	60.0		62.5	62.5		53.8	*	62.5	49.0
	<b>2014</b>	*		55.6	56.3		57.9	57.9		40.0	77.8	57.9	42.6
Tests Taken	<b>2012</b>												200
	<b>2013</b>			14	15		16	16		13	3	16	259
	<b>2014</b>	1		18	16		19	19		10	9	19	404

## NUMBER UNSATISFACTORY (Level 1)

Test	Year	White	African Amer	Hispanic	Econ Disadv	Special Educ	LEP	At Risk	Migrant	Male	Female	All	District
<b>BIOLOGY</b>	<b>2012</b>												149
	<b>2013</b>			6	6		6	6		6	*	6	132
	<b>2014</b>	*		8	7		8	8		6	2	8	232
Tests Taken	<b>2012</b>												200
	<b>2013</b>			14	15		16	16		13	3	16	259
	<b>2014</b>	1		18	16		19	19		10	9	19	404



## PERCENTAGE ADVANCED (Level 3)

Test	Year	White	African Amer	Hispanic	Econ Disadv	Special Educ	LEP	At Risk	Migrant	Male	Female	All	District
<b>BIOLOGY</b>	<b>2012</b>												0.0
	<b>2013</b>			0.0	0.0		0.0	0.0		0.0	*	0.0	0.0
	<b>2014</b>	*		0.0	0.0		0.0	0.0		0.0	0.0	0.0	0.2
Tests Taken	<b>2012</b>												200
	<b>2013</b>			14	15		16	16		13	3	16	259
	<b>2014</b>	1		18	16		19	19		10	9	19	404

## AVERAGE PERCENTAGE OF ITEMS CORRECT BY REPORTING CATEGORY

<b>BIOLOGY</b>	1. Cell Structure and Function	2. Mechanisms of Genetics	3. Biological Evolution and Classification	4. Biological Processes and Systems	5. Interdependence within Environmental Systems
<b>2012</b>					
<b>2013</b>	44.9	40.9	44.4	41.5	34.1
<b>2014</b>	38.3	38.8	46.8	35.9	44.0

## PERCENTAGE SATISFACTORY (Levels 2 and 3)

Test	Year	White	African Amer	Hispanic	Econ Disadv	Special Educ	LEP	At Risk	Migrant	Male	Female	All	District
ENGLISH I	2012												
	2013												
	2014	*	66.7	80.0	68.8	70.6	75.0	66.7		60.0	85.7	70.6	50.6
Tests Taken	2012												
	2013												
	2014	1	6	10	16	17	8	15		10	7	17	405
ENGLISH II	2012												
	2013												
	2014	*	*	42.9	58.3	43.8	42.9	46.2		36.4	*	43.8	65.3
Tests Taken	2012												
	2013												
	2014	1	5	7	12	16	7	13		11	5	16	340

## NUMBER UNSATISFACTORY (Level 1)

Test	Year	White	African Amer	Hispanic	Econ Disadv	Special Educ	LEP	At Risk	Migrant	Male	Female	All	District
ENGLISH I	2012												
	2013												
	2014	*	2	2	5	5	2	5		4	1	5	200
Tests Taken	2012												
	2013												
	2014	1	6	10	16	17	8	15		10	7	17	405
ENGLISH II	2012												
	2013												
	2014	*	*	4	5	9	4	7		7	*	9	118
Tests Taken	2012												
	2013												
	2014	1	5	7	12	16	7	13		11	5	16	340

## PERCENTAGE ADVANCED (Level 3)

Test	Year	White	African Amer	Hispanic	Econ Disadv	Special Educ	LEP	At Risk	Migrant	Male	Female	All	District
ENGLISH I	2012												
	2013												
	2014	*	0.0	0.0	0.0	0.0	0.0	0.0		0.0	0.0	0.0	3.5
Tests Taken	2012												
	2013												
	2014	1	6	10	16	17	8	15		10	7	17	405
ENGLISH II	2012												
	2013												
	2014	*	*	0.0	8.3	6.3	0.0	7.7		9.1	*	6.3	12.6
Tests Taken	2012												
	2013												
	2014	1	5	7	12	16	7	13		11	5	16	340

## AVERAGE PERCENTAGE OF ITEMS CORRECT BY REPORTING CATEGORY

ENGLISH I	1. Understanding & Analysis Across Genres	2. Understanding & Analysis of Literary Texts	3. Understanding & Analysis of Informational Texts	4. Literary Composition <sup>1</sup>	5. Revision	6. Editing
2012						
2013						
2014	61.8	56.9	55.6	3.2	55.6	59.5

ENGLISH II	1. Understanding & Analysis Across Genres	2. Understanding & Analysis of Literary Texts	3. Understanding & Analysis of Informational Texts	4. Expository Composition <sup>1</sup>	5. Revision	6. Editing
2012						
2013						
2014	51.6	45.8	45.8	2.6	41.7	50.7

<sup>1</sup>Average score points (range 0-6). A STAAR M composition is rated twice on a scale of 0 to 3, and the ratings are summed to determine score points for the composition. Score point scale: 0=Non-scorable; 2=Very Limited; 3=between Very Limited and Basic; 4=Basic; 5=between Basic and Satisfactory; 6=Satisfactory

## PERCENTAGE SATISFACTORY (Levels 2 and 3)

Test	Year	White	African Amer	Hispanic	Econ Disadv	Special Educ	LEP	At Risk	Migrant	Male	Female	All	District
<b>ALGEBRA I</b>	<b>2012</b>	*	*	*	14.3	14.3		14.3		0.0	*	14.3	32.5
	<b>2013</b>		57.1	33.3	57.1	47.1	42.9	50.0		45.5	50.0	47.1	36.9
	<b>2014</b>	*	*	45.5	43.8	41.2	50.0	42.9		45.5	33.3	41.2	46.1
Tests Taken	<b>2012</b>	1	4	2	7	7		7		6	1	7	280
	<b>2013</b>		7	9	14	17	7	16		11	6	17	339
	<b>2014</b>	2	4	11	16	17	8	14		11	6	17	360

## NUMBER UNSATISFACTORY (Level 1)

Test	Year	White	African Amer	Hispanic	Econ Disadv	Special Educ	LEP	At Risk	Migrant	Male	Female	All	District
<b>ALGEBRA I</b>	<b>2012</b>	*	*	*	6	6		6		6	*	6	189
	<b>2013</b>		3	6	6	9	4	8		6	3	9	214
	<b>2014</b>	*	*	6	9	10	4	8		6	4	10	194
Tests Taken	<b>2012</b>	1	4	2	7	7		7		6	1	7	280
	<b>2013</b>		7	9	14	17	7	16		11	6	17	339
	<b>2014</b>	2	4	11	16	17	8	14		11	6	17	360



## PERCENTAGE ADVANCED (Level 3)

Test	Year	White	African Amer	Hispanic	Econ Disadv	Special Educ	LEP	At Risk	Migrant	Male	Female	All	District
<b>ALGEBRA I</b>	<b>2012</b>	*	*	*	0.0	0.0		0.0		0.0	*	0.0	0.4
	<b>2013</b>		0.0	0.0	0.0	0.0	0.0	0.0		0.0	0.0	0.0	0.0
	<b>2014</b>	*	*	0.0	0.0	0.0	0.0	0.0		0.0	0.0	0.0	1.4
Tests Taken	<b>2012</b>	1	4	2	7	7		7		6	1	7	280
	<b>2013</b>		7	9	14	17	7	16		11	6	17	339
	<b>2014</b>	2	4	11	16	17	8	14		11	6	17	360

## AVERAGE PERCENTAGE OF ITEMS CORRECT BY REPORTING CATEGORY

ALGEBRA I	1. Functional Relationships	2. Properties and Attributes of Functions	3. Linear Functions	4. Linear Equations and Inequalities	5. Quadratic and Other Nonlinear Functions
2012	33.3	35.7	40.5	41.1	26.5
2013	40.2	42.9	44.1	41.9	47.9
2014	46.1	37.1	40.2	33.8	38.7

## PERCENTAGE SATISFACTORY (Levels 2 and 3)

Test	Year	White	African Amer	Hispanic	Econ Disadv	Special Educ	LEP	At Risk	Migrant	Male	Female	All	District
<b>BIOLOGY</b>	<b>2012</b>	*	*	*	42.9	42.9		42.9		50.0	*	42.9	31.7
	<b>2013</b>		*	33.3	53.8	60.0	42.9	60.0		33.3	100.0	60.0	42.6
	<b>2014</b>	*	*	44.4	40.0	47.1	42.9	46.7		41.7	*	47.1	46.6
Tests Taken	<b>2012</b>	2	4	2	7	7		7		6	1	7	262
	<b>2013</b>		5	9	13	15	7	15		9	6	15	331
	<b>2014</b>	2	5	9	15	17	7	15		12	5	17	350

## NUMBER UNSATISFACTORY (Level 1)

Test	Year	White	African Amer	Hispanic	Econ Disadv	Special Educ	LEP	At Risk	Migrant	Male	Female	All	District
<b>BIOLOGY</b>	<b>2012</b>	*	*	*	4	4		4		3	*	4	179
	<b>2013</b>		*	6	6	6	4	6		6	0	6	190
	<b>2014</b>	*	*	5	9	9	4	8		7	*	9	187
Tests Taken	<b>2012</b>	2	4	2	7	7		7		6	1	7	262
	<b>2013</b>		5	9	13	15	7	15		9	6	15	331
	<b>2014</b>	2	5	9	15	17	7	15		12	5	17	350

## PERCENTAGE ADVANCED (Level 3)

Test	Year	White	African Amer	Hispanic	Econ Disadv	Special Educ	LEP	At Risk	Migrant	Male	Female	All	District
<b>BIOLOGY</b>	<b>2012</b>	*	*	*	0.0	0.0		0.0		0.0	*	0.0	0.0
	<b>2013</b>		*	0.0	0.0	0.0	0.0	0.0		0.0	0.0	0.0	0.0
	<b>2014</b>	*	*	0.0	0.0	0.0	0.0	0.0		0.0	*	0.0	1.1
Tests Taken	<b>2012</b>	1	4	2	7	7		7		6	1	7	262
	<b>2013</b>		5	9	13	15	7	15		9	6	15	331
	<b>2014</b>	2	5	9	15	17	7	15		12	5	17	350

## AVERAGE PERCENTAGE OF ITEMS CORRECT BY REPORTING CATEGORY

<b>BIOLOGY</b>	1. Cell Structure and Function	2. Mechanisms of Genetics	3. Biological Evolution and Classification	4. Biological Processes and Systems	5. Interdependence within Environmental Systems
<b>2012</b>	46.0	51.8	51.8	49.2	39.7
<b>2013</b>	48.9	51.7	52.5	51.1	43.0
<b>2014</b>	37.9	49.3	51.5	47.7	47.1

## PERCENTAGE SATISFACTORY (Levels 2 and 3)

Test	Year	White	African Amer	Hispanic	Econ Disadv	Special Educ	LEP	At Risk	Migrant	Male	Female	All	District
U.S. HISTORY	2012												
	2013												
	2014	*	*	*	0.0	0.0	*	*		*	*	0.0	0.0
Tests Taken	2012												
	2013												
	2014	1	2	3	8	8	1	5		4	4	8	226

## NUMBER UNSATISFACTORY (Level 1)

Test	Year	White	African Amer	Hispanic	Econ Disadv	Special Educ	LEP	At Risk	Migrant	Male	Female	All	District
U.S. HISTORY	2012												
	2013												
	2014	*	*	*	8	8	*	*		*	*	8	226
Tests Taken	2012												
	2013												
	2014	1	2	3	8	8	1	5		4	4	8	226



## PERCENTAGE ADVANCED (Level 3)

Test	Year	White	African Amer	Hispanic	Econ Disadv	Special Educ	LEP	At Risk	Migrant	Male	Female	All	District
U.S. HISTORY	2012												
	2013												
	2014	*	*	*	0.0	0.0	*	*		*	*	0.0	0.0
Tests Taken	2012												
	2013												
	2014	1	2	3	8	8	1	5		4	4	8	226

## AVERAGE PERCENTAGE OF ITEMS CORRECT BY REPORTING CATEGORY

U.S. HISTORY	1. History	2. Geography and Culture	3. Government and Citizenship	4. Economics, Science, Technology, and Society
2012				
2013				
2014	46.9	38.9	51.6	41.3

## PERCENTAGE DEMONSTRATING IMPROVEMENT

Grade	Level 1 in 2013		Level 2 in 2013		Level 3 in 2013		Levels 1-3 in 2013	
	Number Tested Both Years	Percentage Improved in 2014	Number Tested Both Years	Percentage Improved in 2014	Number Tested Both Years	Percentage Improved in 2014	Number Tested Both Years	Percentage Improved in 2014
9	20	45.0	12	66.7	0		32	53.1
10	12	58.3	15	46.7	0		27	51.9
11	3	*	9	22.2	0		12	25.0
12	4	*	15	40.0	0		19	47.4
ALL	39	51.3	51	45.1	0		90	47.8

**PERFORMANCE IN 2014**

Grade 2013-14  (N Rated)	Domain:	Listening		Speaking		Writing		Reading		Composite	
	2014 Level	N	%	N	%	N	%	N	%	N	%
9  (102)	Beginning	7	6.9	8	7.8	8	7.8	13	13.0	6	6.0
	Intermediate	24	23.5	26	25.5	31	30.4	34	34.0	26	26.0
	Advanced	39	38.2	37	36.3	47	46.1	43	43.0	50	50.0
	Advanced High	32	31.4	31	30.4	16	15.7	10	10.0	18	18.0
10  (92)	Beginning	1	1.1	2	2.2	1	1.1	12	13.8	2	2.3
	Intermediate	5	5.5	9	9.9	10	11.0	21	24.1	12	14.0
	Advanced	14	15.4	17	18.7	32	35.2	45	51.7	34	39.5
	Advanced High	71	78.0	63	69.2	48	52.7	9	10.3	38	44.2
11  (65)	Beginning	0	0.0	0	0.0	1	1.5	7	11.1	1	1.6
	Intermediate	2	3.1	5	7.7	6	9.2	13	20.6	4	6.3
	Advanced	9	13.8	9	13.8	13	20.0	30	47.6	25	39.7
	Advanced High	54	83.1	51	78.5	45	69.2	13	20.6	33	52.4
12  (50)	Beginning	0	0.0	0	0.0	0	0.0	4	8.2	0	0.0
	Intermediate	2	4.1	4	8.2	10	20.4	21	42.9	9	18.8
	Advanced	11	22.4	14	28.6	15	30.6	18	36.7	22	45.8
	Advanced High	36	73.5	31	63.3	24	49.0	6	12.2	17	35.4
ALL  (309)	Beginning	8	2.6	10	3.3	10	3.3	36	12.0	9	3.0
	Intermediate	33	10.7	44	14.3	57	18.6	89	29.8	51	17.2
	Advanced	73	23.8	77	25.1	107	34.9	136	45.5	131	44.1
	Advanced High	193	62.9	176	57.3	133	43.3	38	12.7	106	35.7

**PROGRESSION FROM  
2013 TO 2014**

Number Rated Both Years  N (%) Progressed	2014 Level	2013 Level			
		Beg	Int	Adv	Adv High
81  24 (29.6%)	Beginning	3			
	Intermediate	3	17		
	Advanced	0	5	37	
	Advanced High	0	1	15	
74  39 (52.7%)	Beginning	1			
	Intermediate	0	10		
	Advanced	1	4	24	
	Advanced High	0	0	34	
58  37 (63.8%)	Beginning	0			
	Intermediate	0	4		
	Advanced	1	5	17	
	Advanced High	0	0	31	
41  20 (48.8%)	Beginning	0			
	Intermediate	1	7		
	Advanced	0	7	14	
	Advanced High	0	0	12	
254  120 (47.2%)	Beginning	4			
	Intermediate	4	38		
	Advanced	2	21	92	
	Advanced High	0	1	92	

■ Indicates students who progressed at least one level from 2013 to 2014.

Test	Subtest	Year	Percent Tested		All Students			African American			Hispanic			White			District		
			%	Dist %	N	Mean	% at BMRK*	N	Mean	% at BMRK*	N	Mean	% at BMRK*	N	Mean	% at BMRK*	N	Mean	% at BMRK*
SAT	Critical Reading	2011-12	38.7	55.7	106	391	6.6	19	394	0.0	78	395	7.7	1	*	*	4,495	416	18.8
		2012-13	42.3	55.4	131	389	7.6	15	349	0.0	105	386	6.7	1	*	*	4,644	416	19.5
		2013-14	46.6	53.1	123	360	4.1	8	329	0.0	104	359	3.8	1	*	*	4,203	418	20.7
	Mathematics	2011-12	38.7	55.7	106	452	29.2	19	441	26.3	78	448	28.2	1	*	*	4,495	446	29.8
		2012-13	42.3	55.4	131	441	26.0	15	384	20.0	105	441	23.8	1	*	*	4,644	445	29.0
		2013-14	46.6	53.1	123	403	9.8	8	384	0.0	104	402	9.6	1	*	*	4,203	440	27.4
	Writing	2011-12	38.7	55.7	106	383	5.7	19	382	0.0	78	385	6.4	1	*	*	4,495	408	15.9
		2012-13	42.3	55.4	131	375	4.6	15	327	0.0	105	380	4.8	1	*	*	4,644	406	16.1
		2013-14	46.6	53.1	123	366	3.3	8	346	0.0	104	367	2.9	1	*	*	4,203	411	16.9
ACT	English	2011-12	24.8	37.1	68	13	13.2	12	13	8.3	54	13	13.0	1	*	*	2,995	15	33.3
		2012-13	25.2	29.3	78	13	14.1	9	12	11.1	63	13	9.5	1	*	*	2,454	16	34.0
		2013-14	37.9	42.0	100	12	12.0	3	*	*	89	12	11.2	1	*	*	3,324	15	29.3
	Mathematics	2011-12	24.8	37.1	68	18	16.2	12	17	16.7	54	18	16.7	1	*	*	2,995	18	22.7
		2012-13	25.2	29.3	78	18	20.5	9	17	11.1	63	18	19.0	1	*	*	2,454	19	24.4
		2013-14	37.9	42.0	100	17	13.0	3	*	*	89	17	11.2	1	*	*	3,324	18	21.8
	Reading	2011-12	24.8	37.1	68	16	11.8	12	16	8.3	54	16	13.0	1	*	*	2,995	17	23.7
		2012-13	25.2	29.3	78	15	15.4	9	15	11.1	63	15	12.7	1	*	*	2,454	17	26.5
		2013-14	37.9	42.0	100	15	11.0	3	*	*	89	15	9.0	1	*	*	3,324	17	23.8
	Science	2011-12	24.8	37.1	68	16	0.0	12	15	0.0	54	16	0.0	1	*	*	2,995	18	10.8
		2012-13	25.2	29.3	78	16	12.8	9	17	11.1	63	16	11.1	1	*	*	2,454	18	12.7
		2013-14	37.9	42.0	100	16	4.0	3	*	*	89	16	4.5	1	*	*	3,324	18	8.7
	Composite	2011-12	24.8	37.1	68	16	-	12	16	-	54	16	-	1	*	-	2,995	17	-
		2012-13	25.2	29.3	78	16	-	9	16	-	63	15	-	1	*	-	2,454	18	-
		2013-14	37.9	42.0	100	15	-	3	*	-	89	15	-	1	*	-	3,324	17	-

\*See the NOTES report for information about college-readiness benchmarks set by The College Board (SAT) and ACT, Inc.

Grade	Subtest	Year	All			African American			Hispanic			White			Other			District		
			N	Mean	% at BMRK*	N	Mean	% at BMRK*	N	Mean	% at BMRK*	N	Mean	% at BMRK*	N	Mean	% at BMRK*	N	Mean	% at BMRK*
9	Critical Reading	2011	314	32		51	32		242	31		4	*		16	36		1,979	39	
		2012	375	33		58	32		292	33		4	*		19	33		1,924	39	
		2013	341	32		64	31		259	32		8	33		10	39		1,788	39	
	Mathematics	2011	314	34		51	33		242	34		4	*		16	34		1,979	40	
		2012	375	33		58	30		292	33		4	*		19	36		1,924	40	
		2013	341	33		64	32		259	33		8	35		10	41		1,788	40	
	Writing	2011	314	32		51	32		242	32		4	*		16	33		1,979	39	
		2012	375	33		58	31		292	33		4	*		19	33		1,924	39	
		2013	341	32		64	31		259	32		8	35		10	36		1,788	39	
10	Critical Reading	2011	303	32	11.2	30	32	10.0	253	32	9.1	6	38	50.0	13	39	38.5	7,988	36	25.4
		2012	277	35	13.4	46	36	19.6	211	35	11.8	5	*	*	15	36	6.7	8,427	37	23.1
		2013	324	34	12.0	45	32	4.4	259	35	12.4	6	38	33.3	13	36	23.1	8,854	36	23.3
	Mathematics	2011	303	35	10.9	30	34	6.7	253	35	10.7	6	39	33.3	13	38	15.4	7,988	38	24.5
		2012	277	35	9.0	46	33	6.5	211	35	10.0	5	*	*	15	35	6.7	8,427	38	24.5
		2013	324	34	5.9	45	33	4.4	259	34	5.0	6	37	0.0	13	38	30.8	8,854	37	19.6
	Writing	2011	303	33	10.2	30	33	6.7	253	32	9.9	6	37	33.3	13	35	15.4	7,988	36	22.7
		2012	277	34	12.3	46	33	13.0	211	35	11.4	5	*	*	15	35	20.0	8,427	37	23.7
		2013	324	33	12.3	45	31	6.7	259	33	12.7	6	36	16.7	13	36	23.1	8,854	36	21.0
11	Critical Reading	2011	280	34	10.7	35	33	11.4	226	34	8.4	5	*	*	14	41	35.7	3,980	41	33.2
		2012	255	37	8.2	24	34	0.0	213	36	8.5	5	*	*	12	42	8.3	4,007	41	27.4
		2013	247	36	12.6	35	38	22.9	188	35	9.0	8	39	37.5	16	37	18.8	3,787	42	32.8
	Mathematics	2011	280	39	17.9	35	36	17.1	226	39	16.4	5	*	*	14	47	42.9	3,980	43	38.0
		2012	255	37	11.4	24	34	4.2	213	37	12.2	5	*	*	12	40	8.3	4,007	43	33.0
		2013	247	39	11.7	35	37	8.6	188	39	12.2	8	39	12.5	16	42	12.5	3,787	44	33.1
	Writing	2011	280	34	5.7	35	33	2.9	226	34	5.3	5	*	*	14	37	14.3	3,980	40	28.7
		2012	255	35	12.9	24	34	8.3	213	35	12.7	5	*	*	12	38	8.3	4,007	41	33.0
		2013	247	35	10.5	35	35	14.3	188	35	8.5	8	39	50.0	16	33	6.3	3,787	41	32.5

\*See the NOTES report for information about college readiness benchmarks set by The College Board for PSAT

Exams Taken		Average Score		Exams Passed		
N	Dist	Score	Dist	N	%	Dist

**ALL EXAMS**

<b>433</b>	18,984	<b>1.4</b>	1.9	<b>51</b>	<b>11.8</b>	25.1
------------	--------	------------	-----	-----------	-------------	------

**Calculus BC**

<b>2</b>	248	*	3.4	*	*	69.8
----------	-----	---	-----	---	---	------

**English Language & Composition**

<b>57</b>	3,194	<b>1.6</b>	1.8	<b>6</b>	<b>10.5</b>	18.1
-----------	-------	------------	-----	----------	-------------	------

**European History**

<b>16</b>	164	<b>1.0</b>	1.5	<b>0</b>	<b>0.0</b>	18.3
-----------	-----	------------	-----	----------	------------	------

**Human Geography**

<b>18</b>	753	<b>1.1</b>	2.0	<b>1</b>	<b>5.6</b>	32.8
-----------	-----	------------	-----	----------	------------	------

**Spanish Literature**

<b>16</b>	133	<b>2.2</b>	2.7	<b>6</b>	<b>37.5</b>	57.9
-----------	-----	------------	-----	----------	-------------	------

**World History**

<b>18</b>	1,023	<b>1.3</b>	1.8	<b>1</b>	<b>5.6</b>	18.8
-----------	-------	------------	-----	----------	------------	------

Exams Taken		Mean Score		Passed		
School	Dist	School	Dist	N	%	Dist

**Biology**

<b>8</b>	738	<b>1.8</b>	1.9	<b>0</b>	<b>0.0</b>	23.4
----------	-----	------------	-----	----------	------------	------

**Chemistry**

<b>13</b>	388	<b>1.0</b>	2.0	<b>0</b>	<b>0.0</b>	32.0
-----------	-----	------------	-----	----------	------------	------

**English Literature & Composition**

<b>53</b>	2,374	<b>1.3</b>	1.8	<b>2</b>	<b>3.8</b>	18.0
-----------	-------	------------	-----	----------	------------	------

**French Language & Culture**

<b>3</b>	27	*	2.6	*	*	48.1
----------	----	---	-----	---	---	------

**Physics C: Mechanics**

<b>10</b>	198	<b>1.2</b>	2.5	<b>1</b>	<b>10.0</b>	44.4
-----------	-----	------------	-----	----------	-------------	------

**Statistics**

<b>13</b>	502	<b>1.0</b>	2.1	<b>0</b>	<b>0.0</b>	33.5
-----------	-----	------------	-----	----------	------------	------

Exams Taken		Mean Score		Passed		
School	Dist	School	Dist	N	%	Dist

**Calculus AB**

<b>12</b>	960	<b>2.1</b>	2.5	<b>5</b>	<b>41.7</b>	45.7
-----------	-----	------------	-----	----------	-------------	------

**Economics: Macroeconomics**

<b>36</b>	755	<b>1.4</b>	1.4	<b>3</b>	<b>8.3</b>	12.5
-----------	-----	------------	-----	----------	------------	------

**Environmental Science**

<b>32</b>	986	<b>1.3</b>	1.7	<b>3</b>	<b>9.4</b>	19.8
-----------	-----	------------	-----	----------	------------	------

**Government & Politics: United States**

<b>40</b>	1,420	<b>1.1</b>	1.3	<b>1</b>	<b>2.5</b>	7.0
-----------	-------	------------	-----	----------	------------	-----

**Spanish Language**

<b>21</b>	831	<b>3.3</b>	3.5	<b>18</b>	<b>85.7</b>	87.5
-----------	-----	------------	-----	-----------	-------------	------

**United States History**

<b>65</b>	2,570	<b>1.1</b>	1.5	<b>2</b>	<b>3.1</b>	12.6
-----------	-------	------------	-----	----------	------------	------

**SEMESTER 1 TESTS**

Number Tested	Averages				% Passing		District % Passing	
	% Items Correct	Scale Score	Course Mark	Course Mark (no ACP)	ACP	Course	ACP	Course

**ALGEBRA I**

293	36.2	67.6	76.2	77.6	34.8	80.7	41.1	81.4
-----	------	------	------	------	------	------	------	------

**ALGEBRA II**

165	36.5	68.2	74.8	75.9	37.6	81.3	47.9	86.0
-----	------	------	------	------	------	------	------	------

**ALGEBRA II PRE-AP**

88	42.4	70.7	79.7	81.2	54.5	87.4	55.3	89.4
----	------	------	------	------	------	------	------	------

**ART I**

202	68.5	76.4	80.1	80.7	75.2	84.3	79.1	94.8
-----	------	------	------	------	------	------	------	------

**BIOLOGY**

300	43.2	68.5	77.6	79.2	48.3	90.4	61.9	82.5
-----	------	------	------	------	------	------	------	------

**BIOLOGY PRE-AP**

25	49.8	66.5	84.3	87.4	32.0	100.0	71.3	90.4
----	------	------	------	------	------	-------	------	------

**CHEMISTRY**

267	34.3	68.7	75.3	76.5	47.6	85.2	49.7	83.5
-----	------	------	------	------	------	------	------	------

**CHEMISTRY PRE-AP**

73	38.5	67.6	81.1	83.5	31.5	95.9	64.2	93.3
----	------	------	------	------	------	------	------	------

**ECONOMICS**

94	55.1	70.0	83.5	85.9	52.1	98.9	69.6	95.1
----	------	------	------	------	------	------	------	------

**ENGLISH I**

286	46.7	67.4	75.9	77.4	40.2	82.5	50.7	84.8
-----	------	------	------	------	------	------	------	------

**ENGLISH I FOR ESL**

24	55.3	74.7	83.5	85.0	66.7	87.5	54.2	88.3
----	------	------	------	------	------	------	------	------

**SEMESTER 2 TESTS**

Number Tested	Averages				% Passing		District % Passing	
	% Items Correct	Scale Score	Course Mark	Course Mark (no ACP)	ACP	Course	ACP	Course

**ALGEBRA I**

--	--	--	--	--	--	--	--	--

**ALGEBRA II**

145	42.5	70.2	75.1	76.0	59.3	86.9	55.9	84.7
-----	------	------	------	------	------	------	------	------

**ALGEBRA II PRE-AP**

34	55.7	74.4	82.9	84.4	58.8	97.1	69.3	87.2
----	------	------	------	------	------	------	------	------

**ART I**

163	61.6	70.7	80.1	81.7	58.9	90.0	75.5	93.6
-----	------	------	------	------	------	------	------	------

**BIOLOGY**

--	--	--	--	--	--	--	--	--

**BIOLOGY PRE-AP**

--	--	--	--	--	--	--	--	--

**CHEMISTRY**

229	48.6	69.2	75.6	76.7	49.3	82.8	59.3	78.5
-----	------	------	------	------	------	------	------	------

**CHEMISTRY PRE-AP**

71	51.3	67.5	78.7	80.7	43.7	76.1	68.3	91.1
----	------	------	------	------	------	------	------	------

**ECONOMICS**

25	48.8	68.0	81.2	83.6	48.0	100.0	57.3	96.6
----	------	------	------	------	------	-------	------	------

**ENGLISH I**

242	54.0	68.6	74.4	75.4	46.7	75.1	58.2	81.7
-----	------	------	------	------	------	------	------	------

**ENGLISH I FOR ESL**

13	74.1	85.1	87.7	88.1	92.3	100.0	62.6	91.7
----	------	------	------	------	------	-------	------	------



**SEMESTER 1 TESTS**

Number Tested	Averages				% Passing		District % Passing	
	% Items Correct	Scale Score	Course Mark	Course Mark (no ACP)	ACP	Course	ACP	Course

**ENGLISH I PRE-AP**

39	57.9	73.1	81.0	82.3	64.1	94.7	71.2	92.1
----	------	------	------	------	------	------	------	------

**ENGLISH II**

261	56.5	71.0	78.4	79.6	61.7	86.5	59.6	83.5
-----	------	------	------	------	------	------	------	------

**ENGLISH II FOR ESL**

--	--	--	--	--	--	--	--	--

**ENGLISH II PRE-AP**

59	53.7	72.7	87.1	89.7	67.8	96.6	73.6	91.4
----	------	------	------	------	------	------	------	------

**ENGLISH III**

188	56.0	68.6	75.0	76.2	53.7	75.6	55.7	89.1
-----	------	------	------	------	------	------	------	------

**ENGLISH IV**

165	57.7	71.8	79.9	81.4	62.4	95.0	67.9	91.6
-----	------	------	------	------	------	------	------	------

**ENVIRONMENTAL SYSTEMS**

137	64.5	74.6	86.4	88.5	72.3	97.0	75.5	97.3
-----	------	------	------	------	------	------	------	------

**FRENCH II**

71	45.6	68.6	78.3	80.0	38.0	80.3	61.5	87.9
----	------	------	------	------	------	------	------	------

**GEOMETRY**

260	47.8	72.0	76.8	77.6	61.9	87.9	61.9	83.3
-----	------	------	------	------	------	------	------	------

**GEOMETRY PRE-AP**

55	58.5	73.5	76.3	76.8	70.9	81.8	64.6	89.6
----	------	------	------	------	------	------	------	------

**GOVERNMENT**

87	45.3	65.1	79.4	81.9	29.9	98.8	58.9	94.1
----	------	------	------	------	------	------	------	------

**SEMESTER 2 TESTS**

Number Tested	Averages				% Passing		District % Passing	
	% Items Correct	Scale Score	Course Mark	Course Mark (no ACP)	ACP	Course	ACP	Course

**ENGLISH I PRE-AP**

38	59.8	74.3	81.1	82.3	57.9	92.1	78.6	93.9
----	------	------	------	------	------	------	------	------

**ENGLISH II**

241	58.0	70.7	76.5	77.5	58.9	79.4	61.3	80.9
-----	------	------	------	------	------	------	------	------

**ENGLISH II FOR ESL**

14	68.6	80.4	82.6	83.0	92.9	92.9	62.3	87.4
----	------	------	------	------	------	------	------	------

**ENGLISH II PRE-AP**

53	56.8	71.8	83.1	85.1	64.2	98.1	72.2	89.9
----	------	------	------	------	------	------	------	------

**ENGLISH III**

161	61.6	68.0	74.5	75.6	50.9	72.7	52.9	82.6
-----	------	------	------	------	------	------	------	------

**ENGLISH IV**

--	--	--	--	--	--	--	--	--

**ENVIRONMENTAL SYSTEMS**

6	54.2	61.8	78.7	81.6	16.7	66.7	62.8	88.1
---	------	------	------	------	------	------	------	------

**FRENCH II**

64	45.4	65.2	79.8	82.4	32.8	92.2	58.4	81.8
----	------	------	------	------	------	------	------	------

**GEOMETRY**

226	50.0	73.2	75.7	76.1	65.5	81.8	66.7	79.7
-----	------	------	------	------	------	------	------	------

**GEOMETRY PRE-AP**

55	56.1	76.5	76.3	76.2	83.6	76.4	66.0	89.1
----	------	------	------	------	------	------	------	------

**GOVERNMENT**

4	*	*	*	*	*	*	61.0	*
---	---	---	---	---	---	---	------	---

**SEMESTER 1 TESTS**

Number Tested	Averages				% Passing		District % Passing	
	% Items Correct	Scale Score	Course Mark	Course Mark (no ACP)	ACP	Course	ACP	Course

**HS BAND: LISTENING AND MUSIC ELEMENTS**

--	--	--	--	--	--	--	--	--

**HS HEALTH EDUCATION**

167	63.7	75.8	87.2	89.2	77.8	100.0	81.1	96.5
-----	------	------	------	------	------	-------	------	------

**MATH MODELS W/APPLICATIONS**

54	49.1	69.4	76.8	78.1	53.7	86.5	55.0	88.7
----	------	------	------	------	------	------	------	------

**PHYSICS**

238	38.0	68.5	76.9	78.4	35.3	91.3	37.8	85.3
-----	------	------	------	------	------	------	------	------

**PHYSICS PRE-AP**

50	53.4	72.6	79.7	81.0	62.0	92.0	53.9	94.5
----	------	------	------	------	------	------	------	------

**PRE-CALCULUS**

125	43.4	64.6	74.9	76.8	30.4	86.1	53.4	87.9
-----	------	------	------	------	------	------	------	------

**PRE-CALCULUS PRE-AP**

78	61.7	74.5	74.7	74.7	73.1	72.7	72.6	93.1
----	------	------	------	------	------	------	------	------

**READING II FOR ESL**

13	59.0	75.4	87.7	89.9	76.9	100.0	48.7	94.2
----	------	------	------	------	------	-------	------	------

**READING III FOR ESL**

15	69.7	79.8	82.5	83.0	93.3	100.0	55.1	99.3
----	------	------	------	------	------	-------	------	------

**SPANISH FOR NATIVE SPEAKERS II**

64	62.2	74.8	78.7	79.3	75.0	81.0	62.7	94.3
----	------	------	------	------	------	------	------	------

**SPANISH I**

179	71.2	80.8	86.2	87.1	72.6	94.9	71.3	91.2
-----	------	------	------	------	------	------	------	------

**SEMESTER 2 TESTS**

Number Tested	Averages				% Passing		District % Passing	
	% Items Correct	Scale Score	Course Mark	Course Mark (no ACP)	ACP	Course	ACP	Course

**HS BAND: LISTENING AND MUSIC ELEMENTS**

30		68.3	96.7	101.7	50.0	100.0	84.0	96.5
----	--	------	------	-------	------	-------	------	------

**HS HEALTH EDUCATION**

137	67.2	76.5	86.1	87.8	77.4	97.8	76.7	95.7
-----	------	------	------	------	------	------	------	------

**MATH MODELS W/APPLICATIONS**

46	44.4	72.2	78.3	79.4	60.9	84.8	58.5	85.3
----	------	------	------	------	------	------	------	------

**PHYSICS**

177	45.0	71.0	74.7	75.4	55.9	81.4	53.6	82.4
-----	------	------	------	------	------	------	------	------

**PHYSICS PRE-AP**

44	55.7	76.7	80.6	81.3	88.6	90.9	62.4	91.8
----	------	------	------	------	------	------	------	------

**PRE-CALCULUS**

14	33.3	67.2	78.0	79.9	28.6	78.6	48.2	82.4
----	------	------	------	------	------	------	------	------

**PRE-CALCULUS PRE-AP**

66	50.0	71.1	76.8	77.8	57.6	81.8	62.6	90.8
----	------	------	------	------	------	------	------	------

**READING II FOR ESL**

13	73.4	82.3	87.7	88.6	84.6	100.0	70.2	91.1
----	------	------	------	------	------	-------	------	------

**READING III FOR ESL**

14	68.0	80.0	82.1	82.4	85.7	92.9	64.7	94.9
----	------	------	------	------	------	------	------	------

**SPANISH FOR NATIVE SPEAKERS II**

62	66.0	77.4	80.6	81.1	80.6	82.3	69.8	88.6
----	------	------	------	------	------	------	------	------

**SPANISH I**

160	70.5	80.3	84.2	84.9	73.1	88.7	72.9	84.3
-----	------	------	------	------	------	------	------	------

**SEMESTER 1 TESTS**

Number Tested	Averages				% Passing		District % Passing	
	% Items Correct	Scale Score	Course Mark	Course Mark (no ACP)	ACP	Course	ACP	Course

**SPANISH II**

112	68.3	78.9	84.0	84.8	75.9	96.2	72.2	93.0
-----	------	------	------	------	------	------	------	------

**U.S. HISTORY**

170	53.6	64.3	76.0	78.0	34.1	91.0	51.5	86.9
-----	------	------	------	------	------	------	------	------

**WORLD GEOGRAPHY**

270	44.1	67.1	77.3	79.1	39.6	91.3	48.7	86.7
-----	------	------	------	------	------	------	------	------

**WORLD GEOGRAPHY PRE-AP**

27	60.8	73.9	82.0	83.4	63.0	100.0	75.0	94.9
----	------	------	------	------	------	-------	------	------

**WORLD HISTORY**

248	51.8	72.2	79.7	81.0	58.5	92.1	48.3	90.0
-----	------	------	------	------	------	------	------	------

**WORLD HISTORY PRE-AP**

59	56.9	71.3	82.4	84.3	54.2	94.9	65.5	95.0
----	------	------	------	------	------	------	------	------

**SEMESTER 2 TESTS**

Number Tested	Averages				% Passing		District % Passing	
	% Items Correct	Scale Score	Course Mark	Course Mark (no ACP)	ACP	Course	ACP	Course

**SPANISH II**

93	67.1	78.1	80.7	81.2	69.9	84.9	76.5	89.2
----	------	------	------	------	------	------	------	------

**U.S. HISTORY**

9	57.6	75.5	84.1	85.6	66.7	88.9	58.7	88.9
---	------	------	------	------	------	------	------	------

**WORLD GEOGRAPHY**

242	47.1	68.2	75.4	76.6	43.4	81.0	57.7	82.9
-----	------	------	------	------	------	------	------	------

**WORLD GEOGRAPHY PRE-AP**

26	63.5	75.7	82.7	84.0	80.8	96.2	79.5	94.5
----	------	------	------	------	------	------	------	------

**WORLD HISTORY**

221	59.3	72.9	78.6	79.6	66.5	89.0	58.5	85.3
-----	------	------	------	------	------	------	------	------

**WORLD HISTORY PRE-AP**

57	68.6	76.4	80.4	81.1	75.4	80.7	65.4	94.3
----	------	------	------	------	------	------	------	------