

# DATA PACKET

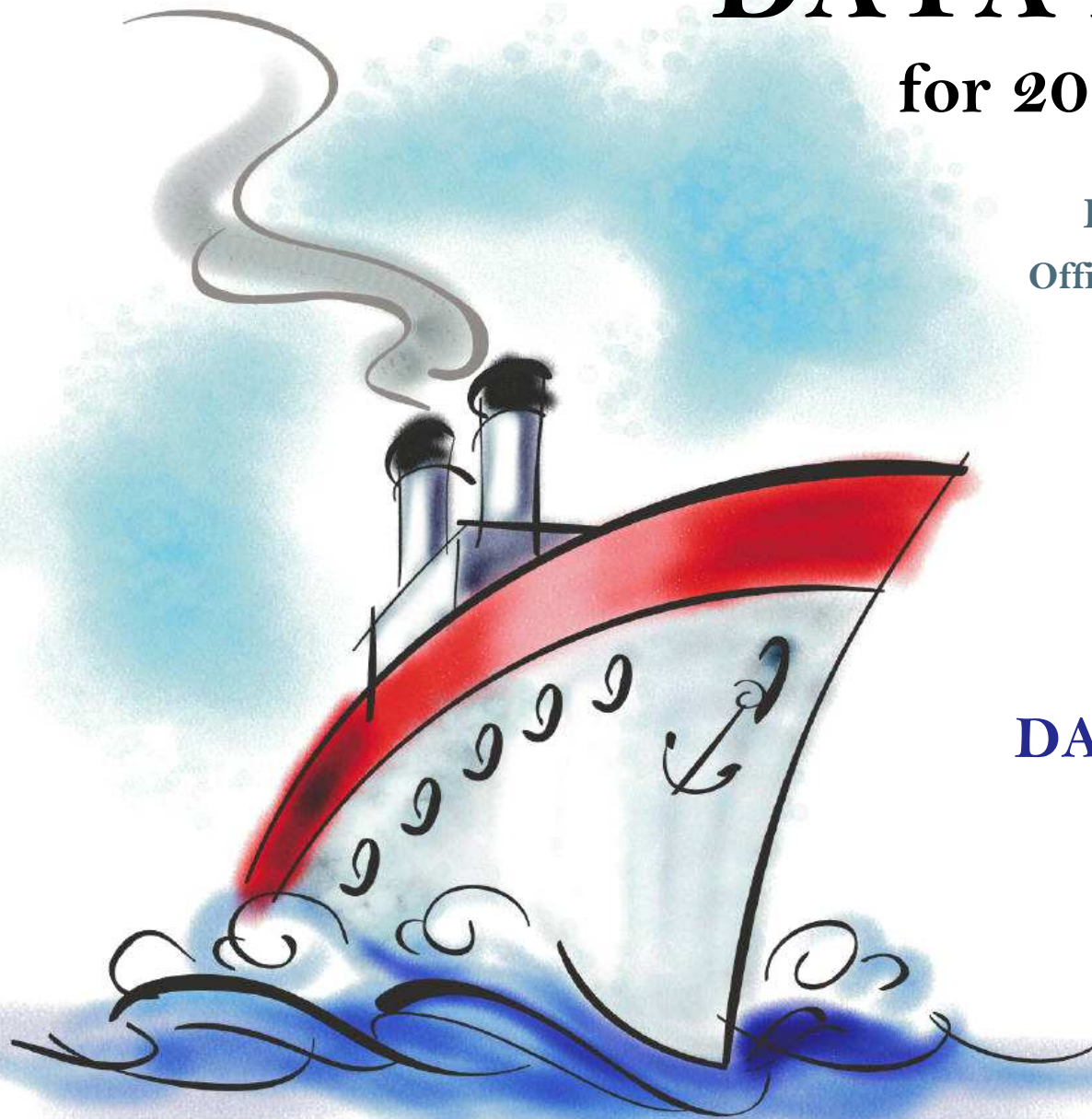
for 2014-15 planning

Evaluation & Assessment  
Office of Institutional Research  
<http://mydata.dallasisd.org>  
[OIR@dallasisd.org](mailto:OIR@dallasisd.org)

September 5, 2014

School Number 23

**DAVID W. CARTER  
HIGH SCHOOL**



Dallas Independent School District

2. Contents ..... Table of Contents

**STUDENTS AND STAFF**

- 6. Summary ..... Summary of Student and Teacher Statistics
- 8. Enroll (2) ..... Enrollment Statistics by Select Student Group
- 10. Teachers ..... Teacher Statistics

**STAAR (English)**

- 11. Reading (EOC) .. STAAR EOC Reading
- 19. Science (EOC) ... STAAR EOC Science

**STAAR M**

- 27. Reading (EOC) .. STAAR M EOC Reading
- 35. Science (EOC) ... STAAR M EOC Science

**ENGLISH PROFICIENCY**

- 43. WMLS ..... Woodcock-Muñoz Language Survey

**COLLEGE READINESS**

- 45. SAT/ACT ..... SAT/ACT Average Scores for Seniors
- 47. AP ..... Advanced Placement (AP) Exams

**LOCAL ASSESSMENT**

- 48. ACP ..... Assessments of Course Performance

3. Notes ..... Notes and Data Descriptions

- 7. Enroll (1) ..... Enrollment Statistics by Ethnicity
- 9. Attendance ..... Student Attendance Statistics

- 15. Math (EOC) ..... STAAR EOC Mathematics
- 23. SS (EOC) ..... STAAR EOC Social Studies

- 31. Math (EOC) ..... STAAR M EOC Mathematics
- 39. SS (EOC) ..... STAAR M EOC Social Studies

44. TELPAS ..... Texas English Language Proficiency Assessment System

46. PSAT ..... PSAT Average Scores

## **2013-14 SCHOOL SUMMARY**

- Student percentages are computed as the percentage of total student enrollment.
- Additional statistics are available in ENROLLMENT and TEACHER reports.
- Race/ethnic categories are based on the newest federal standards for ethnicity and race reporting, though some categories have been combined because of small group sizes. Students reporting their ethnicity as “Hispanic” are not counted in any race category.
- “Economically disadvantaged” students are those who qualify for free or reduced-price lunch through the federal government's program.
- Teacher demographics and assignments are from the district's Public Education Information Management System (PEIMS) submission to the TEA.

## **ENROLLMENT**

- Statistics are based on the school's enrollment at the end of the fifth six-weeks grading period.
- “Economically disadvantaged” students are those receiving free or reduced-price lunches.
- “New” students were new to the district in 2013-14. They are counted as new if not enrolled in a district campus before the last day of the 2012-13 school year.
- The “retention rate” is the percentage of students in the same grade at the end of the fifth six-weeks grading period for both 2012-13 and 2013-14.

## **ATTENDANCE**

- Statistics are based on student attendance through the end of the sixth six-weeks grading period (the end of the school year).
- “Average daily membership” is the total number of school days students were ENROLLED divided by the number of school days in the year.
- The “average daily attendance” number (N) is the total number of school days students were IN ATTENDANCE divided by the number of school days in the year. The “average daily attendance” percentage (%) is the average attendance rate. For each student, the number of days attended is divided by the number of days enrolled. This rate is then averaged across students.
- The number (N) of “yearly transactions” is the total number of transfer and withdrawal transactions in the school year. The percentage (%) is the number of transactions divided by “average daily membership,” which gives (on average) the percentage of the membership associated with a transaction.
- “Continuously enrolled” students are enrolled and in attendance for a minimum number of instructional days in at least one course at the school between the beginning of the school year and the first day of the main STAAR testing period. The minimum number varies depending on the school year's calendar, but is typically around 130 days.
- The “stability rate” is the number of continuously enrolled students divided by “average daily membership.”

## **TEACHERS**

- Teacher demographics and assignments are from the district's Public Education Information Management System (PEIMS) submission to the TEA.
- Teacher absences counted towards the average DO NOT include vacation days (coded as VAC in personnel database).
- Retention rate for a school year is computed with numerator “# of teachers assigned to the school both that year and the year prior” and denominator “# of teachers assigned to the school for the prior year.” That is, the retention rate is the percentage of the prior year's teachers who continued at the school.

### **STAAR, STAAR L, and STAAR M**

- Cells marked with an asterisk (\*) indicate five or fewer students were tested. Blank cells indicate no students were tested.
- Student group assignments are from the district's Public Education Information Management System (PEIMS) submission to the TEA.
- STAAR statistics are based on results from standard STAAR only. STAAR L and STAAR M statistics are computed separately, following TEA reporting practice.
- “Percentage Satisfactory” is the percentage of students achieving Level 2 (Satisfactory) or Level 3 (Advanced).
- Statistics by reporting category are averages for all students (across student groups and genders).
- An “average percentage correct” is computed as follows: for each student, divide the number of items correctly answered by the total number of items in the test section, then average the resulting percentages across all students. For short answers on EOC English tests, an “average rating” is presented; STAAR EOC short answers are rated on a scale of 0 to 3. For written compositions on writing tests, “average score points” is presented. Additional details provided in report footnotes.
- EOC statistics are based on first administration scores from the fall and spring administrations.
- Beginning in 2014, EOC Reading and EOC Writing tests were replaced with EOC English tests.

### **TELPAS**

- Students are counted as having tested if any one of the four domains is rated. Because a TELPAS composite rating is not assigned to a student unless all four domains are rated, the number of TELPAS composite ratings may be smaller than the number tested.
- If a student's composite rating did not increase at least one level from 2013 to 2014, the TEA did not report the 2013 composite rating.
- If a student is rated as advanced high in 2014, the TEA does not differentiate between the advanced and advanced high levels from 2013.

## **COLLEGE READINESS**

- Cells marked with an asterisk (\*) indicate five or fewer students were tested. Blank cells indicate no students were tested.
- For SAT and ACT, “Percent Tested” is computed with “Number Tested” as numerator and, as denominator, Grade 12 “Enrollment” as reported in Enrollment (1) and Enrollment (2) reports. For PSAT, the denominator for “Percent Tested” is grade-level enrollment as reported in Enrollment reports.
- Score summaries for SAT and ACT contain all scores available for the school year at the time of publication.
- The SAT and ACT are administered throughout the school year by The College Board and ACT, Inc. A student takes the SAT or ACT at the time and location of her choice, and she may take either test multiple times. If a student has results from multiple administrations, only the latest is used.
- SAT scores range from 200 to 800. ACT scores range from 0 to 36.
- SAT College and Career Readiness Benchmarks are the same for each subject (critical reading, mathematics, and writing): 500. The SAT benchmark indicates a 65 percent likelihood of achieving a B- average or higher during the first year of college. ACT's College Readiness Benchmarks are the minimum scores that indicate a 50 percent chance of earning a B or better (and 75 percent chance of earning a C or better) in the corresponding college course. The ACT benchmarks are available for four subject-area tests. They are English: 18, reading: 21, mathematics: 22, and science: 24.
- PSAT scores range from 20 to 80. PSAT is administered once each year in October. District students taking PSAT are tested at their schools. Statistics for a grade level are based on all students in that grade level in the fall with a PSAT score for that year. (Students' scores will be used in multiple statistics if they took the PSAT in multiple years.)
- PSAT/NMSQT College and Career Readiness Benchmarks are the scores associated with a 65 percent likelihood of achieving a B- first-year college GPA. The College Board has determined PSAT benchmark scores separately for grades 10 and 11 in each subject. For grade 10, the benchmarks are critical reading: 42, mathematics: 44, writing: 42. For grade 11, the benchmarks are critical reading: 45, mathematics: 47, writing: 45. There are no benchmarks for grade 9.
- AP scores range from 1 to 5; a minimum of 3 is needed to pass.

## **ACP**

- Cells marked with an asterisk (\*) indicate five or fewer students were tested. Blank cells indicate no students were tested.
- The ACPs are semester exams administered in grades K-12. Not all courses have ACPs. In MIDDLE and HIGH school, ACP results account for a portion of students' final semester grades (10% and 15% respectively). “Average course mark (no ACP)” is computed from semester grades before factoring in ACP scores. In ELEMENTARY school, ACP results account for 5% of students' semester grades for core courses; course-grade statistics are not reported in data packets for elementary grades.
- Raw scores on the ACPs (percentage of items correct) are scaled each year to maintain similar annual passing rates for the district.
- A scale score of at least 70 percent is required to pass an ACP. A course mark of at least 70 percent is required to pass a course.
- Statistics are computed separately for Semester 1 and Semester 2 tests; time of administration during the school year is not relevant. Results from tests written for different school years are not combined.

**STUDENT ENROLLMENT**

Grade	Enrollment
9	279
10	273
11	186
12	227
ALL	965

**STUDENT AND TEACHER RACE/ETHNICITY**

Ethnicity/Race	Students		Teachers	
	Number	Percent	Number	Percent
Black/African American	729	75.5	48	76.2
American Indian/Alaska Native	2	0.2	*	*
Asian/Hawaiian/Pacific Islander	3	0.3	*	*
Hispanic	227	23.5	3	4.8
White	3	0.3	8	12.7
Multiple	0	0.0	2	3.2
Other* (teachers only)	—	—	2	3.2
Not reported (students only)	0	0.0	—	—

\*For teachers, "Other" category includes American Indian/Alaska Native and Asian/Hawaiian/Pacific Islander.

**SELECT STUDENT GROUP ENROLLMENT**

Group	Number	Percent
At-Risk	787	81.6
Economically disadvantaged	766	79.4
Limited English proficient (LEP)	78	8.1
Special education	128	13.3
Talented and Gifted (TAG)	52	5.4

Grade	Year	Enrollment	African American		American Indian		Asian		Hispanic		White		Multiple category	
			N	%	N	%	N	%	N	%	N	%	N	%
9	2012	279	199	71.3	0	0.0	0	0.0	79	28.3	1	0.4	0	0.0
	2013	279	200	71.7	1	0.4	1	0.4	76	27.2	0	0.0	1	0.4
	2014	279	201	72.0	0	0.0	1	0.4	77	27.6	0	0.0	0	0.0
10	2012	216	170	78.7	2	0.9	0	0.0	40	18.5	3	1.4	0	0.0
	2013	209	157	75.1	1	0.5	0	0.0	50	23.9	1	0.5	0	0.0
	2014	273	202	74.0	1	0.4	1	0.4	69	25.3	0	0.0	0	0.0
11	2012	231	172	74.5	1	0.4	1	0.4	55	23.8	2	0.9	0	0.0
	2013	228	185	81.1	0	0.0	0	0.0	41	18.0	1	0.4	0	0.0
	2014	186	144	77.4	1	0.5	0	0.0	40	21.5	1	0.5	0	0.0
12	2012	236	196	83.1	0	0.0	0	0.0	39	16.5	1	0.4	0	0.0
	2013	222	170	76.6	0	0.0	0	0.0	50	22.5	2	0.9	0	0.0
	2014	227	182	80.2	0	0.0	1	0.4	41	18.1	2	0.9	0	0.0
9-12	2012	962	737	76.6	3	0.3	1	0.1	213	22.1	7	0.7	0	0.0
	2013	938	712	75.9	2	0.2	1	0.1	217	23.1	4	0.4	1	0.1
	2014	965	729	75.5	2	0.2	3	0.3	227	23.5	3	0.3	0	0.0

Grade	Year	Enrollment	Economically Disadvantaged		LEP		Special Education		At Risk		TAG		New (to District)		Gender		Retention Rate (%)
			N	%	N	%	N	%	N	%	N	%	N	%	% Male	% Female	
9	2012	279	245	87.8	34	12.2	45	16.1	218	78.1	11	3.9	58	20.8	55.6	44.4	11.1
	2013	279	238	85.3	33	11.8	37	13.3	201	72.0	2	0.7	47	16.8	53.4	46.6	6.1
	2014	279	235	84.2	28	10.0	35	12.5	218	78.1	11	3.9	43	15.4	48.4	51.6	5.0
10	2012	216	174	80.6	20	9.3	27	12.5	170	78.7	10	4.6	29	13.4	56.9	43.1	2.3
	2013	209	179	85.6	18	8.6	37	17.7	151	72.2	12	5.7	24	11.5	48.8	51.2	2.4
	2014	273	218	79.9	30	11.0	38	13.9	229	83.9	11	4.0	34	12.5	54.2	45.8	5.9
11	2012	231	165	71.4	17	7.4	22	9.5	186	80.5	9	3.9	28	12.1	50.6	49.4	0.9
	2013	228	177	77.6	10	4.4	28	12.3	170	74.6	10	4.4	40	17.5	53.1	46.9	0.0
	2014	186	145	78.0	12	6.5	28	15.1	157	84.4	18	9.7	16	8.6	51.1	48.9	1.6
12	2012	236	196	83.1	12	5.1	37	15.7	194	82.2	14	5.9	17	7.2	52.1	47.9	2.1
	2013	222	174	78.4	10	4.5	29	13.1	184	82.9	9	4.1	8	3.6	51.8	48.2	2.7
	2014	227	168	74.0	8	3.5	27	11.9	183	80.6	12	5.3	9	4.0	52.9	47.1	1.3
9-12	2012	962	780	81.1	83	8.6	131	13.6	768	79.8	44	4.6	132	13.7	53.8	46.2	4.5
	2013	938	768	81.9	71	7.6	131	14.0	706	75.3	33	3.5	119	12.7	51.9	48.1	3.0
	2014	965	766	79.4	78	8.1	128	13.3	787	81.6	52	5.4	102	10.6	51.6	48.4	3.7



Grade	Year	Average Daily Membership		Average Daily Attendance				Yearly Transactions			Continuously Enrolled		Stability Rate	
		N	District	N	%	District N	District %	N	%	District %	N	District	%	District
9	2012	280	10,922	263	93.6	10,196	93.3	132	47.1	27.8	205	8,726	73.1	79.9
	2013	272	11,153	252	92.6	10,499	94.1	144	52.9	28.3	204	9,388	75.0	84.2
	2014	276	10,850	259	93.9	10,242	94.4	127	46.0	28.4	209	9,091	75.7	83.8
10	2012	225	9,007	210	93.3	8,431	93.6	63	27.9	20.6	168	7,332	74.5	81.4
	2013	214	9,331	199	93.0	8,812	94.4	89	41.5	20.5	168	8,042	78.4	86.2
	2014	275	9,898	256	93.2	9,367	94.6	94	34.2	20.3	219	8,628	79.6	87.2
11	2012	246	8,913	230	93.3	8,306	93.2	58	23.5	15.9	194	7,319	78.7	82.1
	2013	236	8,457	225	95.1	7,949	94.0	77	32.6	18.9	190	7,295	80.3	86.3
	2014	195	8,467	183	94.2	8,005	94.5	45	23.1	18.1	164	7,476	84.2	88.3
12	2012	231	8,178	217	94.2	7,571	92.6	27	11.7	12.6	205	6,742	88.8	82.4
	2013	210	8,199	198	94.0	7,661	93.4	28	13.3	14.9	185	7,269	88.0	88.7
	2014	224	7,886	211	93.9	7,407	93.9	28	12.5	15.2	205	7,027	91.3	89.1
9-12	2012	983	37,021	920	93.6	34,504	93.2	280	28.5	19.8	772	30,119	78.5	81.4
	2013	933	37,140	874	93.6	34,922	94.0	338	36.2	21.2	747	31,994	80.1	86.1
	2014	970	37,101	910	93.7	35,021	94.4	294	30.3	21.1	797	32,222	82.1	86.8

Teachers: 63

**DISTRIBUTIONS**

Ethnicity/Race	Number	Percentage
African American	48	76.2
Hispanic	3	4.8
White	8	12.7
Multiple	2	3.2
Other	2	3.2

Gender	Number	Percentage
Female	39	61.9
Male	24	38.1

**ATTENDANCE / RETENTION**

	Average Absences	Retention Rate
2011-12	7.6	—
2012-13	8.0	66.2
2013-14	7.2	69.4

**YEARS EXPERIENCE**

Years	Number	Percentage
Beginning (0)	4	6.3
1	3	4.8
2	2	3.2
3	4	6.3
4	1	1.6
5	4	6.3
1-3	9	14.3
More than 3	50	79.4
1 - 5	14	22.2
6 - 10	11	17.5
11 - 20	24	38.1
More than 20	10	15.9

## PERCENTAGE SATISFACTORY (Levels 2 and 3)

Test	Year	White	African Amer	Hispanic	Econ Disadv	Special Educ	LEP	At Risk	Migrant	Male	Female	All	District
ENGLISH I	2012												
	2013												
	2014		42.1	39.3	42.5	13.3	20.5	33.4		33.3	49.7	41.4	50.9
Tests Taken	2012												
	2013												
	2014		271	107	315	30	44	302		192	187	379	13,789
ENGLISH II	2012												
	2013												
	2014	*	39.2	24.7	36.1	12.5	5.7	24.8		28.3	42.9	34.9	54.8
Tests Taken	2012												
	2013												
	2014	1	204	85	230	24	35	234		159	133	292	10,943

## NUMBER UNSATISFACTORY (Level 1)

Test	Year	White	African Amer	Hispanic	Econ Disadv	Special Educ	LEP	At Risk	Migrant	Male	Female	All	District
ENGLISH I	2012												
	2013												
	2014		157	65	181	26	35	201		128	94	222	6,774
Tests Taken	2012												
	2013												
	2014		271	107	315	30	44	302		192	187	379	13,789
ENGLISH II	2012												
	2013												
	2014	*	124	64	147	21	33	176		114	76	190	4,948
Tests Taken	2012												
	2013												
	2014	1	204	85	230	24	35	234		159	133	292	10,943

## PERCENTAGE ADVANCED (Level 3)

Test	Year	White	African Amer	Hispanic	Econ Disadv	Special Educ	LEP	At Risk	Migrant	Male	Female	All	District
ENGLISH I	2012												
	2013												
	2014		0.4	0.9	0.3	0.0	0.0	0.0		0.0	1.1	0.5	3.2
Tests Taken	2012												
	2013												
	2014		271	107	315	30	44	302		192	187	379	13,789
ENGLISH II	2012												
	2013												
	2014	*	0.0	1.2	0.4	0.0	0.0	0.0		0.0	0.8	0.3	2.7
Tests Taken	2012												
	2013												
	2014	1	204	85	230	24	35	234		159	133	292	10,943

## AVERAGE PERCENTAGE OF ITEMS CORRECT BY REPORTING CATEGORY

ENGLISH I	1. Understanding & Analysis Across Genres	1. Average Rating Short Answer #1 <sup>1</sup>	1. Average Rating Short Answer #2 <sup>1</sup>	2. Understanding & Analysis of Literary Texts	3. Understanding & Analysis of Informational Texts	4. Expository Composition <sup>2</sup>	5. Revision	6. Editing
2012								
2013								
2014	62.8	1.0	1.2	52.4	54.3	3.8	62.4	48.7

ENGLISH II	1. Understanding & Analysis Across Genres	1. Average Rating Short Answer #1 <sup>1</sup>	1. Average Rating Short Answer #2 <sup>1</sup>	2. Understanding & Analysis of Literary Texts	3. Understanding & Analysis of Informational Texts	4. Persuasive Composition <sup>2</sup>	5. Revision	6. Editing
2012								
2013								
2014	69.5	0.8	0.8	46.7	58.4	3.5	61.6	63.1

<sup>1</sup>Short answer rating scale: 0=Insufficient; 1=Partially Sufficient; 2=Sufficient; 3=Exemplary

<sup>2</sup>Average score points (0-8). A composition is rated twice on a scale of 1 to 4, and the ratings are summed to determine score points for the composition. Score point scale: 0=Nonscorable; 2=Very Limited; 3=between Very Limited and Basic; 4=Basic; 5=between Basic and Satisfactory; 6=Satisfactory; 7=between Satisfactory and Accomplished; 8=Accomplished

## PERCENTAGE SATISFACTORY (Levels 2 or 3)

Test	Year	White	African Amer	Hispanic	Econ Disadv	Special Educ	LEP	At Risk	Migrant	Male	Female	All	District
<b>ALGEBRA I</b>	<b>2012</b>		60.1	40.4	56.6	50.0	25.0	45.7		52.9	57.0	54.7	74.7
	<b>2013</b>	*	40.9	50.8	46.1	63.6	42.9	36.5		49.5	39.2	44.6	72.5
	<b>2014</b>		63.4	68.1	63.8	50.0	56.0	59.0		65.2	62.6	63.9	78.0
Tests Taken	<b>2012</b>		138	52	152	18	20	137		104	86	190	8,795
	<b>2013</b>	1	149	61	178	11	21	137		111	102	213	9,251
	<b>2014</b>		183	69	218	18	25	195		132	123	255	9,524

## NUMBER UNSATISFACTORY (Level 1)

Test	Year	White	African Amer	Hispanic	Econ Disadv	Special Educ	LEP	At Risk	Migrant	Male	Female	All	District
<b>ALGEBRA I</b>	<b>2012</b>		55	31	66	9	15	70		49	37	86	2,226
	<b>2013</b>	*	88	30	96	4	12	87		56	62	118	2,540
	<b>2014</b>		67	22	79	9	11	80		46	46	92	2,099
Tests Taken	<b>2012</b>		138	52	152	18	20	137		104	86	190	8,795
	<b>2013</b>	1	149	61	178	11	21	137		111	102	213	9,251
	<b>2014</b>		183	69	218	18	25	195		132	123	255	9,524



## PERCENTAGE ADVANCED (Level 3)

Test	Year	White	African Amer	Hispanic	Econ Disadv	Special Educ	LEP	At Risk	Migrant	Male	Female	All	District
<b>ALGEBRA I</b>	<b>2012</b>		0.0	0.0	0.0	0.0	0.0	0.0		0.0	0.0	0.0	7.0
	<b>2013</b>	*	0.0	0.0	0.0	0.0	0.0	0.0		0.0	0.0	0.0	8.6
	<b>2014</b>		0.0	4.3	1.4	0.0	0.0	0.5		1.5	0.8	1.2	9.9
Tests Taken	<b>2012</b>		138	52	152	18	20	129		104	86	190	8,795
	<b>2013</b>	1	149	61	178	11	21	137		111	102	213	9,251
	<b>2014</b>		183	69	218	18	25	195		132	123	255	9,524

## AVERAGE PERCENTAGE OF ITEMS CORRECT BY REPORTING CATEGORY

<b>ALGEBRA I</b>	1. Functional Relationships	2. Properties and Attributes of Functions	3. Linear Functions	4. Linear Equations and Inequalities	5. Quadratic and Other Nonlinear Functions
<b>2012</b>	42.1	36.6	36.0	33.5	41.0
<b>2013</b>	36.0	31.1	34.6	38.9	35.9
<b>2014</b>	43.2	42.4	44.4	39.8	36.8

## PERCENTAGE SATISFACTORY (Levels 2 and 3)

Test	Year	White	African Amer	Hispanic	Econ Disadv	Special Educ	LEP	At Risk	Migrant	Male	Female	All	District
<b>BIOLOGY</b>	<b>2012</b>		76.0	65.0	73.4	41.2	57.1	65.9		69.6	76.8	72.9	82.9
	<b>2013</b>		78.0	78.1	77.7	69.2	68.2	72.3		77.2	79.4	78.3	84.4
	<b>2014</b>		84.8	82.1	82.6	38.9	60.9	80.0		83.7	84.6	84.2	89.8
Tests Taken	<b>2012</b>		150	60	173	17	21	138		115	95	210	8,881
	<b>2013</b>		164	64	193	13	22	137		123	107	230	9,374
	<b>2014</b>		197	67	230	18	23	190		129	136	265	9,672

## NUMBER UNSATISFACTORY (Level 1)

Test	Year	White	African Amer	Hispanic	Econ Disadv	Special Educ	LEP	At Risk	Migrant	Male	Female	All	District
<b>BIOLOGY</b>	<b>2012</b>		36	21	46	10	9	47		35	22	57	1,522
	<b>2013</b>		36	14	43	4	7	38		28	22	50	1,467
	<b>2014</b>		30	12	40	11	9	38		21	21	42	987
Tests Taken	<b>2012</b>		150	60	173	17	21	138		115	95	210	8,881
	<b>2013</b>		164	64	193	13	22	137		123	107	230	9,374
	<b>2014</b>		197	67	230	18	23	190		129	136	265	9,672

## PERCENTAGE ADVANCED (Level 3)

Test	Year	White	African Amer	Hispanic	Econ Disadv	Special Educ	LEP	At Risk	Migrant	Male	Female	All	District
<b>BIOLOGY</b>	<b>2012</b>		0.7	0.0	0.6	0.0	0.0	0.0		0.9	0.0	0.5	4.8
	<b>2013</b>		1.8	7.8	3.1	0.0	4.5	1.5		4.9	1.9	3.5	7.5
	<b>2014</b>		0.5	0.0	0.0	0.0	0.0	0.0		0.0	0.7	0.4	7.5
Tests Taken	<b>2012</b>		150	60	173	17	21	138		115	95	210	8,881
	<b>2013</b>		164	64	193	13	22	137		123	107	230	9,374
	<b>2014</b>		197	67	230	18	23	190		129	136	265	9,672

## AVERAGE PERCENTAGE OF ITEMS CORRECT BY REPORTING CATEGORY

<b>BIOLOGY</b>	1. Cell Structure and Function	2. Mechanisms of Genetics	3. Biological Evolution and Classification	4. Biological Processes and Systems	5. Interdependence within Environmental Systems
<b>2012</b>	42.2	46.9	50.1	40.7	48.3
<b>2013</b>	44.6	44.3	53.2	47.2	47.7
<b>2014</b>	39.7	52.1	56.5	54.4	49.1

## PERCENTAGE SATISFACTORY (Levels 2 or 3)

Test	Year	White	African Amer	Hispanic	Econ Disadv	Special Educ	LEP	At Risk	Migrant	Male	Female	All	District
U.S. HISTORY	2012												*
	2013												90.2
	2014	*	91.8	87.0	89.7	54.5	80.0	88.3		91.4	89.9	90.7	92.0
Tests Taken	2012												4
	2013												51
	2014	1	134	46	146	11	15	137		93	89	182	7,801

## NUMBER UNSATISFACTORY (Level 1)

Test	Year	White	African Amer	Hispanic	Econ Disadv	Special Educ	LEP	At Risk	Migrant	Male	Female	All	District
U.S. HISTORY	2012												*
	2013												5
	2014	*	11	6	15	5	3	16		8	9	17	625
Tests Taken	2012												4
	2013												51
	2014	1	134	46	146	11	15	137		93	89	182	7,801



## PERCENTAGE ADVANCED (Level 3)

Test	Year	White	African Amer	Hispanic	Econ Disadv	Special Educ	LEP	At Risk	Migrant	Male	Female	All	District
U.S. HISTORY	2012												*
	2013												2.0
	2014	*	3.7	0.0	2.7	0.0	0.0	1.5		3.2	3.4	3.3	10.3
Tests Taken	2012												4
	2013												51
	2014	1	134	46	146	11	15	137		93	89	182	7,801

## AVERAGE PERCENTAGE OF ITEMS CORRECT BY REPORTING CATEGORY

U.S. HISTORY	1. History	2. Geography and Culture	3. Government and Citizenship	4. Economics, Science, Technology, and Society
2012				
2013				
2014	53.4	62.9	58.8	63.9

## PERCENTAGE SATISFACTORY (Levels 2 and 3)

Test	Year	White	African Amer	Hispanic	Econ Disadv	Special Educ	LEP	At Risk	Migrant	Male	Female	All	District
ENGLISH I	2012												
	2013												
	2014		40.0	*	33.3	35.7	*	35.7		33.3	*	35.7	50.6
Tests Taken	2012												
	2013												
	2014		10	4	12	14	2	14		9	5	14	405
ENGLISH II	2012												
	2013												
	2014		76.9	*	66.7	70.6	*	71.4		66.7	75.0	70.6	65.3
Tests Taken	2012												
	2013												
	2014		13	4	15	17	4	14		9	8	17	340

## NUMBER UNSATISFACTORY (Level 1)

Test	Year	White	African Amer	Hispanic	Econ Disadv	Special Educ	LEP	At Risk	Migrant	Male	Female	All	District
ENGLISH I	2012												
	2013												
	2014		6	*	8	9	*	9		6	*	9	200
Tests Taken	2012												
	2013												
	2014		10	4	12	14	2	14		9	5	14	405
ENGLISH II	2012												
	2013												
	2014		3	*	5	5	*	4		3	2	5	118
Tests Taken	2012												
	2013												
	2014		13	4	15	17	4	14		9	8	17	340

## PERCENTAGE ADVANCED (Level 3)

Test	Year	White	African Amer	Hispanic	Econ Disadv	Special Educ	LEP	At Risk	Migrant	Male	Female	All	District
ENGLISH I	2012												
	2013												
	2014		0.0	*	0.0	0.0	*	0.0		0.0	*	0.0	3.5
Tests Taken	2012												
	2013												
	2014		10	4	12	14	2	14		9	5	14	405
ENGLISH II	2012												
	2013												
	2014		30.8	*	33.3	29.4	*	21.4		11.1	50.0	29.4	12.6
Tests Taken	2012												
	2013												
	2014		13	4	15	17	4	14		9	8	17	340

## AVERAGE PERCENTAGE OF ITEMS CORRECT BY REPORTING CATEGORY

ENGLISH I	1. Understanding & Analysis Across Genres	2. Understanding & Analysis of Literary Texts	3. Understanding & Analysis of Informational Texts	4. Literary Composition <sup>1</sup>	5. Revision	6. Editing
2012						
2013						
2014	46.4	41.3	42.9	1.7	44.4	50.0

ENGLISH II	1. Understanding & Analysis Across Genres	2. Understanding & Analysis of Literary Texts	3. Understanding & Analysis of Informational Texts	4. Expository Composition <sup>1</sup>	5. Revision	6. Editing
2012						
2013						
2014	54.4	63.4	56.9	3.5	45.1	59.5

<sup>1</sup>Average score points (range 0-6). A STAAR M composition is rated twice on a scale of 0 to 3, and the ratings are summed to determine score points for the composition. Score point scale: 0=Non-scorable; 2=Very Limited; 3=between Very Limited and Basic; 4=Basic; 5=between Basic and Satisfactory; 6=Satisfactory

## PERCENTAGE SATISFACTORY (Levels 2 and 3)

Test	Year	White	African Amer	Hispanic	Econ Disadv	Special Educ	LEP	At Risk	Migrant	Male	Female	All	District
<b>ALGEBRA I</b>	<b>2012</b>		33.3	*	29.4	31.6	*	26.7		27.3	37.5	31.6	32.5
	<b>2013</b>		58.3	*	69.2	56.3	*	57.1		50.0	62.5	56.3	36.9
	<b>2014</b>		87.5	*	90.0	83.3	*	83.3		85.7	*	83.3	46.1
Tests Taken	<b>2012</b>		18	1	17	19	1	15		11	8	19	280
	<b>2013</b>		12	3	13	16	3	14		8	8	16	339
	<b>2014</b>		8	4	10	12	2	12		7	5	12	360

## NUMBER UNSATISFACTORY (Level 1)

Test	Year	White	African Amer	Hispanic	Econ Disadv	Special Educ	LEP	At Risk	Migrant	Male	Female	All	District
<b>ALGEBRA I</b>	<b>2012</b>		12	*	12	13	*	11		8	5	13	189
	<b>2013</b>		5	*	4	7	*	6		4	3	7	214
	<b>2014</b>		1	*	1	2	*	2		1	*	2	194
Tests Taken	<b>2012</b>		18	1	17	19	1	15		11	8	19	280
	<b>2013</b>		12	3	13	16	3	14		8	8	16	339
	<b>2014</b>		8	4	10	12	2	12		7	5	12	360



## PERCENTAGE ADVANCED (Level 3)

Test	Year	White	African Amer	Hispanic	Econ Disadv	Special Educ	LEP	At Risk	Migrant	Male	Female	All	District
<b>ALGEBRA I</b>	<b>2012</b>		0.0	*	0.0	0.0	*	0.0		0.0	0.0	0.0	0.4
	<b>2013</b>		0.0	*	0.0	0.0	*	0.0		0.0	0.0	0.0	0.0
	<b>2014</b>		0.0	*	0.0	0.0	*	0.0		0.0	*	0.0	1.4
Tests Taken	<b>2012</b>		18	1	17	19	1	15		11	8	19	280
	<b>2013</b>		12	3	13	16	3	14		8	8	16	339
	<b>2014</b>		8	4	10	12	2	12		7	5	12	360

## AVERAGE PERCENTAGE OF ITEMS CORRECT BY REPORTING CATEGORY

ALGEBRA I	1. Functional Relationships	2. Properties and Attributes of Functions	3. Linear Functions	4. Linear Equations and Inequalities	5. Quadratic and Other Nonlinear Functions
2012	38.6	32.6	36.0	34.2	30.8
2013	47.9	38.8	43.2	33.6	46.4
2014	52.8	48.3	46.5	46.9	53.6

## PERCENTAGE SATISFACTORY (Levels 2 and 3)

Test	Year	White	African Amer	Hispanic	Econ Disadv	Special Educ	LEP	At Risk	Migrant	Male	Female	All	District
<b>BIOLOGY</b>	<b>2012</b>		27.8	*	23.5	26.3	*	20.0		36.4	12.5	26.3	31.7
	<b>2013</b>		58.3	*	61.5	50.0	*	50.0		50.0	50.0	50.0	42.6
	<b>2014</b>		12.5	*	10.0	16.7	*	16.7		28.6	*	16.7	46.6
Tests Taken	<b>2012</b>		18	1	17	19	1	15		11	8	19	262
	<b>2013</b>		12	3	13	16	3	14		8	8	16	331
	<b>2014</b>		8	4	10	12	2	12		7	5	12	350

## NUMBER UNSATISFACTORY (Level 1)

Test	Year	White	African Amer	Hispanic	Econ Disadv	Special Educ	LEP	At Risk	Migrant	Male	Female	All	District
<b>BIOLOGY</b>	<b>2012</b>		13	*	13	14	*	12		7	7	14	179
	<b>2013</b>		5	*	5	8	*	7		4	4	8	190
	<b>2014</b>		7	*	9	10	*	10		5	*	10	187
Tests Taken	<b>2012</b>		18	1	17	19	1	15		11	8	19	262
	<b>2013</b>		12	3	13	16	3	14		8	8	16	331
	<b>2014</b>		8	4	10	12	2	12		7	5	12	350

## PERCENTAGE ADVANCED (Level 3)

Test	Year	White	African Amer	Hispanic	Econ Disadv	Special Educ	LEP	At Risk	Migrant	Male	Female	All	District
<b>BIOLOGY</b>	<b>2012</b>		0.0	*	0.0	0.0	*	0.0		0.0	0.0	0.0	0.0
	<b>2013</b>		0.0	*	0.0	0.0	*	0.0		0.0	0.0	0.0	0.0
	<b>2014</b>		0.0	*	0.0	0.0	*	0.0		0.0	*	0.0	1.1
Tests Taken	<b>2012</b>		18	1	17	19	1	15		11	8	19	262
	<b>2013</b>		12	3	13	16	3	14		8	8	16	331
	<b>2014</b>		8	4	10	12	2	12		7	5	12	350

## AVERAGE PERCENTAGE OF ITEMS CORRECT BY REPORTING CATEGORY

<b>BIOLOGY</b>	1. Cell Structure and Function	2. Mechanisms of Genetics	3. Biological Evolution and Classification	4. Biological Processes and Systems	5. Interdependence within Environmental Systems
<b>2012</b>	39.8	41.4	41.4	39.2	31.6
<b>2013</b>	43.8	47.7	56.3	52.1	42.4
<b>2014</b>	38.9	41.7	43.8	38.9	37.0

## PERCENTAGE SATISFACTORY (Levels 2 and 3)

Test	Year	White	African Amer	Hispanic	Econ Disadv	Special Educ	LEP	At Risk	Migrant	Male	Female	All	District
U.S. HISTORY	2012												
	2013												
	2014		0.0	*	0.0	0.0	*	0.0		0.0	*	0.0	0.0
Tests Taken	2012												
	2013												
	2014		20	1	18	21	1	17		16	5	21	226

## NUMBER UNSATISFACTORY (Level 1)

Test	Year	White	African Amer	Hispanic	Econ Disadv	Special Educ	LEP	At Risk	Migrant	Male	Female	All	District
U.S. HISTORY	2012												
	2013												
	2014		20	*	18	21	*	17		16	*	21	226
Tests Taken	2012												
	2013												
	2014		20	1	18	21	1	17		16	5	21	226



## PERCENTAGE ADVANCED (Level 3)

Test	Year	White	African Amer	Hispanic	Econ Disadv	Special Educ	LEP	At Risk	Migrant	Male	Female	All	District
U.S. HISTORY	2012												
	2013												
	2014		0.0	*	0.0	0.0	*	0.0		0.0	*	0.0	0.0
Tests Taken	2012												
	2013												
	2014		20	1	18	21	1	17		16	5	21	226

## AVERAGE PERCENTAGE OF ITEMS CORRECT BY REPORTING CATEGORY

U.S. HISTORY	1. History	2. Geography and Culture	3. Government and Citizenship	4. Economics, Science, Technology, and Society
2012				
2013				
2014	42.7	46.0	47.6	48.0

## PERCENTAGE DEMONSTRATING IMPROVEMENT


Grade	Level 1 in 2013		Level 2 in 2013		Level 3 in 2013		Levels 1-3 in 2013	
	Number Tested Both Years	Percentage Improved in 2014	Number Tested Both Years	Percentage Improved in 2014	Number Tested Both Years	Percentage Improved in 2014	Number Tested Both Years	Percentage Improved in 2014
9	4	*	0		0		4	*
10	2	*	2	*	0		4	*
11	3	*	2	*	0		5	*
12	1	*	1	*	0		2	*
ALL	10	20.0	5	*	0		15	26.7

**PERFORMANCE IN 2014**

Grade 2013-14 (N Rated)	Domain:	Listening		Speaking		Writing		Reading		Composite	
	2014 Level	N	%	N	%	N	%	N	%	N	%
9 (30)	Beginning	6	20.7	6	20.7	5	17.2	5	17.2	4	14.3
	Intermediate	1	3.4	1	3.4	3	10.3	7	24.1	3	10.7
	Advanced	7	24.1	6	20.7	11	37.9	9	31.0	10	35.7
	Advanced High	15	51.7	16	55.2	10	34.5	8	27.6	11	39.3
10 (28)	Beginning	1	3.7	1	3.7	1	3.7	5	18.5	2	7.7
	Intermediate	3	11.1	3	11.1	6	22.2	6	22.2	5	19.2
	Advanced	8	29.6	8	29.6	9	33.3	13	48.1	11	42.3
	Advanced High	15	55.6	15	55.6	11	40.7	3	11.1	8	30.8
11 (11)	Beginning	0	0.0	0	0.0	0	0.0	0	0.0	0	0.0
	Intermediate	2	18.2	3	27.3	3	27.3	4	40.0	4	40.0
	Advanced	3	27.3	1	9.1	5	45.5	5	50.0	3	30.0
	Advanced High	6	54.5	7	63.6	3	27.3	1	10.0	3	30.0
12 (9)	Beginning	0	0.0	1	11.1	1	11.1	1	12.5	0	0.0
	Intermediate	1	11.1	0	0.0	0	0.0	3	37.5	2	25.0
	Advanced	2	22.2	4	44.4	5	55.6	4	50.0	5	62.5
	Advanced High	6	66.7	4	44.4	3	33.3	0	0.0	1	12.5
ALL (78)	Beginning	7	9.2	8	10.5	7	9.2	11	14.9	6	8.3
	Intermediate	7	9.2	7	9.2	12	15.8	20	27.0	14	19.4
	Advanced	20	26.3	19	25.0	30	39.5	31	41.9	29	40.3
	Advanced High	42	55.3	42	55.3	27	35.5	12	16.2	23	31.9

**PROGRESSION FROM  
2013 TO 2014**

Number Rated Both Years N (%) Progressed	2014 Level	2013 Level			
		Beg	Int	Adv	Adv High
20 12 (60.0%)	Beginning	1			
	Intermediate	0	1		
	Advanced	0	3	6	
	Advanced High	0	0	9	
21 6 (28.6%)	Beginning	2			
	Intermediate	0	4		
	Advanced	0	0	9	
	Advanced High	0	0	6	
10 4 (40.0%)	Beginning	0			
	Intermediate	1	3		
	Advanced	0	0	3	
	Advanced High	0	0	3	
8 1 (12.5%)	Beginning	0			
	Intermediate	0	2		
	Advanced	0	0	5	
	Advanced High	0	0	1	
59 23 (39.0%)	Beginning	3			
	Intermediate	1	10		
	Advanced	0	3	23	
	Advanced High	0	0	19	

 Indicates students who progressed at least one level from 2013 to 2014.

Test	Subtest	Year	Percent Tested		All Students			African American			Hispanic			White			District		
			%	Dist %	N	Mean	% at BMRK*	N	Mean	% at BMRK*	N	Mean	% at BMRK*	N	Mean	% at BMRK*	N	Mean	% at BMRK*
SAT	Critical Reading	2011-12	45.3	55.7	107	381	2.8	95	379	3.2	12	398	0.0				4,495	416	18.8
		2012-13	50.9	55.4	113	381	5.3	91	385	6.6	22	364	0.0				4,644	416	19.5
		2013-14	47.6	53.1	108	369	3.7	87	371	3.4	19	372	5.3				4,203	418	20.7
	Mathematics	2011-12	45.3	55.7	107	407	11.2	95	403	9.5	12	439	25.0				4,495	446	29.8
		2012-13	50.9	55.4	113	405	14.2	91	405	13.2	22	404	18.2				4,644	445	29.0
		2013-14	47.6	53.1	108	398	11.1	87	393	11.5	19	425	10.5				4,203	440	27.4
	Writing	2011-12	45.3	55.7	107	371	1.9	95	369	2.1	12	385	0.0				4,495	408	15.9
		2012-13	50.9	55.4	113	383	10.6	91	384	11.0	22	378	9.1				4,644	406	16.1
		2013-14	47.6	53.1	108	366	2.8	87	369	2.3	19	370	5.3				4,203	411	16.9
ACT	English	2011-12	49.6	37.1	117	13	15.4	95	13	17.9	22	12	4.5				2,995	15	33.3
		2012-13	15.8	29.3	35	13	14.3	31	13	9.7	3	*	*	1	*	*	2,454	16	34.0
		2013-14	49.3	42.0	112	13	17.9	87	13	16.1	22	14	27.3	1	*	*	3,324	15	29.3
	Mathematics	2011-12	49.6	37.1	117	16	5.1	95	16	6.3	22	15	0.0				2,995	18	22.7
		2012-13	15.8	29.3	35	16	5.7	31	16	3.2	3	*	*	1	*	*	2,454	19	24.4
		2013-14	49.3	42.0	112	16	8.9	87	16	9.2	22	17	9.1	1	*	*	3,324	18	21.8
	Reading	2011-12	49.6	37.1	117	15	8.5	95	15	10.5	22	14	0.0				2,995	17	23.7
		2012-13	15.8	29.3	35	14	2.9	31	14	0.0	3	*	*	1	*	*	2,454	17	26.5
		2013-14	49.3	42.0	112	15	17.0	87	15	17.2	22	15	18.2	1	*	*	3,324	17	23.8
	Science	2011-12	49.6	37.1	117	15	0.9	95	15	1.1	22	14	0.0				2,995	18	10.8
		2012-13	15.8	29.3	35	15	0.0	31	15	0.0	3	*	*	1	*	*	2,454	18	12.7
		2013-14	49.3	42.0	112	16	1.8	87	16	2.3	22	15	0.0	1	*	*	3,324	18	8.7
Composite	2011-12	49.6	37.1	117	15	-	95	15	-	22	14	-				2,995	17	-	
	2012-13	15.8	29.3	35	15	-	31	15	-	3	*	-	1	*	-	2,454	18	-	
	2013-14	49.3	42.0	112	15	-	87	15	-	22	15	-	1	*	-	3,324	17	-	

\*See the NOTES report for information about college-readiness benchmarks set by The College Board (SAT) and ACT, Inc.

Grade	Subtest	Year	All			African American			Hispanic			White			Other			District		
			N	Mean	% at BMRK*	N	Mean	% at BMRK*	N	Mean	% at BMRK*	N	Mean	% at BMRK*	N	Mean	% at BMRK*	N	Mean	% at BMRK*
10	Critical Reading	2011	194	33	8.8	144	34	8.3	44	32	11.4	3	*	*	2	*	*	7,988	36	25.4
		2012	157	34	9.6	119	35	9.2	36	33	8.3	0			2	*	*	8,427	37	23.1
		2013	173	33	7.5	120	33	8.3	51	33	5.9	0			2	*	*	8,854	36	23.3
	Mathematics	2011	194	34	4.1	144	33	4.2	44	36	4.5	3	*	*	2	*	*	7,988	38	24.5
		2012	157	35	7.0	119	35	7.6	36	35	5.6	0			2	*	*	8,427	38	24.5
		2013	173	32	2.9	120	32	3.3	51	32	2.0	0			2	*	*	8,854	37	19.6
	Writing	2011	194	34	5.2	144	33	6.3	44	34	2.3	3	*	*	2	*	*	7,988	36	22.7
		2012	157	34	13.4	119	34	16.0	36	33	5.6	0			2	*	*	8,427	37	23.7
		2013	173	30	6.4	120	31	5.8	51	27	7.8	0			2	*	*	8,854	36	21.0
11	Critical Reading	2011	7	39	28.6	7	39	28.6	0			0			0			3,980	41	33.2
		2012	33	39	9.1	28	39	10.7	5	*	*	0			0			4,007	41	27.4
		2013	46	38	10.9	37	39	8.1	8	34	12.5	0			1	*	*	3,787	42	32.8
	Mathematics	2011	7	41	28.6	7	41	28.6	0			0			0			3,980	43	38.0
		2012	33	42	21.2	28	42	17.9	5	*	*	0			0			4,007	43	33.0
		2013	46	40	17.4	37	40	16.2	8	40	25.0	0			1	*	*	3,787	44	33.1
	Writing	2011	7	38	28.6	7	38	28.6	0			0			0			3,980	40	28.7
		2012	33	41	27.3	28	41	25.0	5	*	*	0			0			4,007	41	33.0
		2013	46	39	17.4	37	39	18.9	8	39	0.0	0			1	*	*	3,787	41	32.5

\*See the NOTES report for information about college readiness benchmarks set by The College Board for PSAT

Exams Taken		Average Score		Exams Passed		
N	Dist	Score	Dist	N	%	Dist

**ALL EXAMS**

<b>344</b>	18,984	<b>1.1</b>	1.9	<b>8</b>	<b>2.3</b>	25.1
------------	--------	------------	-----	----------	------------	------

**Economics: Microeconomics**

<b>24</b>	487	<b>1.0</b>	1.4	<b>0</b>	<b>0.0</b>	10.5
-----------	-----	------------	-----	----------	------------	------

**Environmental Science**

<b>66</b>	986	<b>1.2</b>	1.7	<b>2</b>	<b>3.0</b>	19.8
-----------	-----	------------	-----	----------	------------	------

**Physics C: Electricity & Magnetism**

<b>2</b>	67	*	3.2	*	*	58.2
----------	----	---	-----	---	---	------

**United States History**

<b>54</b>	2,570	<b>1.0</b>	1.5	<b>0</b>	<b>0.0</b>	12.6
-----------	-------	------------	-----	----------	------------	------

Exams Taken		Mean Score		Passed		
School	Dist	School	Dist	N	%	Dist

**Biology**

<b>6</b>	738	<b>1.5</b>	1.9	<b>0</b>	<b>0.0</b>	23.4
----------	-----	------------	-----	----------	------------	------

**English Language & Composition**

<b>75</b>	3,194	<b>1.1</b>	1.8	<b>0</b>	<b>0.0</b>	18.1
-----------	-------	------------	-----	----------	------------	------

**Government & Politics: United States**

<b>31</b>	1,420	<b>1.0</b>	1.3	<b>0</b>	<b>0.0</b>	7.0
-----------	-------	------------	-----	----------	------------	-----

**Physics C: Mechanics**

<b>2</b>	198	*	2.5	*	*	44.4
----------	-----	---	-----	---	---	------

Exams Taken		Mean Score		Passed		
School	Dist	School	Dist	N	%	Dist

**Calculus AB**

<b>10</b>	960	<b>1.0</b>	2.5	<b>0</b>	<b>0.0</b>	45.7
-----------	-----	------------	-----	----------	------------	------

**English Literature & Composition**

<b>61</b>	2,374	<b>1.0</b>	1.8	<b>0</b>	<b>0.0</b>	18.0
-----------	-------	------------	-----	----------	------------	------

**Physics B**

<b>12</b>	315	<b>1.7</b>	2.2	<b>3</b>	<b>25.0</b>	35.9
-----------	-----	------------	-----	----------	-------------	------

**Spanish Language**

<b>1</b>	831	*	3.5	*	*	87.5
----------	-----	---	-----	---	---	------

**SEMESTER 1 TESTS**

Number Tested	Averages				% Passing		District % Passing	
	% Items Correct	Scale Score	Course Mark	Course Mark (no ACP)	ACP	Course	ACP	Course

**ALGEBRA I**

210	33.4	66.1	78.6	80.7	25.2	95.6	41.1	81.4
-----	------	------	------	------	------	------	------	------

**ALGEBRA II**

152	32.8	66.4	72.6	73.7	25.7	71.1	47.9	86.0
-----	------	------	------	------	------	------	------	------

**ALGEBRA II PRE-AP**

45	41.2	70.1	74.8	75.6	62.2	82.2	55.3	89.4
----	------	------	------	------	------	------	------	------

**ART I**

191	60.3	70.3	94.2	98.4	59.2	99.4	79.1	94.8
-----	------	------	------	------	------	------	------	------

**BIOLOGY**

214	55.0	75.0	74.6	74.5	70.6	88.9	61.9	82.5
-----	------	------	------	------	------	------	------	------

**BIOLOGY PRE-AP**

36	71.1	80.8	79.5	79.1	88.9	100.0	71.3	90.4
----	------	------	------	------	------	-------	------	------

**CHEMISTRY**

201	35.1	69.1	77.5	79.0	46.8	86.2	49.7	83.5
-----	------	------	------	------	------	------	------	------

**CHEMISTRY PRE-AP**

47	46.4	71.8	82.9	84.8	61.7	95.7	64.2	93.3
----	------	------	------	------	------	------	------	------

**ECONOMICS**

78	72.2	81.5	75.1	73.9	96.2	92.0	69.6	95.1
----	------	------	------	------	------	------	------	------

**ENGLISH I**

204	49.2	68.9	75.2	76.3	48.0	88.7	50.7	84.8
-----	------	------	------	------	------	------	------	------

**ENGLISH I PRE-AP**

19	51.5	69.0	77.5	78.9	42.1	94.4	71.2	92.1
----	------	------	------	------	------	------	------	------

**SEMESTER 2 TESTS**

Number Tested	Averages				% Passing		District % Passing	
	% Items Correct	Scale Score	Course Mark	Course Mark (no ACP)	ACP	Course	ACP	Course

**ALGEBRA I**

--	--	--	--	--	--	--	--	--

**ALGEBRA II**

112	37.4	67.6	76.1	77.6	32.1	90.7	55.9	84.7
-----	------	------	------	------	------	------	------	------

**ALGEBRA II PRE-AP**

36	55.1	74.1	71.4	70.8	77.8	55.9	69.3	87.2
----	------	------	------	------	------	------	------	------

**ART I**

171		66.7	91.8	96.2	39.8	96.9	75.5	93.6
-----	--	------	------	------	------	------	------	------

**BIOLOGY**

--	--	--	--	--	--	--	--	--

**BIOLOGY PRE-AP**

--	--	--	--	--	--	--	--	--

**CHEMISTRY**

185	59.8	75.9	77.3	77.4	76.2	82.5	59.3	78.5
-----	------	------	------	------	------	------	------	------

**CHEMISTRY PRE-AP**

46	63.0	75.4	80.1	80.9	80.4	88.9	68.3	91.1
----	------	------	------	------	------	------	------	------

**ECONOMICS**

--	--	--	--	--	--	--	--	--

**ENGLISH I**

202	56.7	70.5	76.5	77.4	60.9	81.6	58.2	81.7
-----	------	------	------	------	------	------	------	------

**ENGLISH I PRE-AP**

37	57.9	73.1	76.9	77.5	64.9	94.4	78.6	93.9
----	------	------	------	------	------	------	------	------



**SEMESTER 1 TESTS**

Number Tested	Averages				% Passing		District % Passing	
	% Items Correct	Scale Score	Course Mark	Course Mark (no ACP)	ACP	Course	ACP	Course

**ENGLISH II**

186	53.5	69.0	75.0	76.0	49.5	80.7	59.6	83.5
-----	------	------	------	------	------	------	------	------

**ENGLISH II FOR ESL**

--	--	--	--	--	--	--	--	--

**ENGLISH II PRE-AP**

50	51.8	71.7	82.9	84.9	60.0	88.0	73.6	91.4
----	------	------	------	------	------	------	------	------

**ENGLISH III**

117	53.1	66.5	85.6	89.0	39.3	100.0	55.7	89.1
-----	------	------	------	------	------	-------	------	------

**ENGLISH IV**

145	61.7	74.4	80.6	81.6	73.1	95.8	67.9	91.6
-----	------	------	------	------	------	------	------	------

**GEOMETRY**

207	48.3	72.3	74.0	74.4	62.3	79.9	61.9	83.3
-----	------	------	------	------	------	------	------	------

**GEOMETRY PRE-AP**

56	47.3	66.4	81.5	84.2	37.5	94.6	64.6	89.6
----	------	------	------	------	------	------	------	------

**GOVERNMENT**

71	62.0	75.7	71.6	70.9	71.8	84.5	58.9	94.1
----	------	------	------	------	------	------	------	------

**HS BAND: LISTENING AND MUSIC ELEMENTS**

54		72.4	92.4	95.9	51.9	100.0	67.0	98.9
----	--	------	------	------	------	-------	------	------

**HS HEALTH EDUCATION**

130	61.8	74.5	84.0	85.7	75.4	91.8	81.1	96.5
-----	------	------	------	------	------	------	------	------

**PHYSICS**

188	43.8	71.4	75.5	76.2	62.2	91.9	37.8	85.3
-----	------	------	------	------	------	------	------	------

**SEMESTER 2 TESTS**

Number Tested	Averages				% Passing		District % Passing	
	% Items Correct	Scale Score	Course Mark	Course Mark (no ACP)	ACP	Course	ACP	Course

**ENGLISH II**

169	58.8	71.3	77.6	78.6	63.3	89.7	61.3	80.9
-----	------	------	------	------	------	------	------	------

**ENGLISH II FOR ESL**

5	*	*	*	*	*	*	62.3	*
---	---	---	---	---	---	---	------	---

**ENGLISH II PRE-AP**

24	52.9	69.3	80.7	82.7	45.8	95.8	72.2	89.9
----	------	------	------	------	------	------	------	------

**ENGLISH III**

99	58.1	65.1	80.3	82.9	35.4	97.9	52.9	82.6
----	------	------	------	------	------	------	------	------

**ENGLISH IV**

--	--	--	--	--	--	--	--	--

**GEOMETRY**

195	48.5	72.4	70.9	70.5	61.0	57.5	66.7	79.7
-----	------	------	------	------	------	------	------	------

**GEOMETRY PRE-AP**

49	44.1	70.1	79.0	80.6	46.9	85.7	66.0	89.1
----	------	------	------	------	------	------	------	------

**GOVERNMENT**

5	*	*	*	*	*	*	61.0	*
---	---	---	---	---	---	---	------	---

**HS BAND: LISTENING AND MUSIC ELEMENTS**

26		77.4	92.5	95.1	84.6	100.0	84.0	96.5
----	--	------	------	------	------	-------	------	------

**HS HEALTH EDUCATION**

118	59.8	71.3	83.2	85.4	62.7	97.4	76.7	95.7
-----	------	------	------	------	------	------	------	------

**PHYSICS**

102	55.9	76.8	76.3	76.2	78.4	88.7	53.6	82.4
-----	------	------	------	------	------	------	------	------

**SEMESTER 1 TESTS**

Number Tested	Averages				% Passing		District % Passing	
	% Items Correct	Scale Score	Course Mark	Course Mark (no ACP)	ACP	Course	ACP	Course

**PHYSICS PRE-AP**

56	63.9	78.8	77.3	77.0	85.7	92.9	53.9	94.5
----	------	------	------	------	------	------	------	------

**PRE-CALCULUS**

114	57.1	73.2	72.9	72.9	75.4	78.8	53.4	87.9
-----	------	------	------	------	------	------	------	------

**PRE-CALCULUS PRE-AP**

28	77.3	84.9	84.8	84.7	100.0	100.0	72.6	93.1
----	------	------	------	------	-------	-------	------	------

**READING II FOR ESL**

--	--	--	--	--	--	--	--	--

**SPANISH FOR NATIVE SPEAKERS I**

16	63.9	75.9	84.4	85.9	68.8	100.0	64.4	89.8
----	------	------	------	------	------	-------	------	------

**SPANISH FOR NATIVE SPEAKERS II**

26	59.2	72.8	85.7	88.0	76.9	100.0	62.7	94.3
----	------	------	------	------	------	-------	------	------

**SPANISH I**

189	60.8	73.8	78.7	79.4	58.2	91.5	71.3	91.2
-----	------	------	------	------	------	------	------	------

**SPANISH II**

192	62.3	74.9	81.2	82.4	67.2	95.8	72.2	93.0
-----	------	------	------	------	------	------	------	------

**U.S. HISTORY**

130	64.5	72.7	75.6	76.1	60.8	85.6	51.5	86.9
-----	------	------	------	------	------	------	------	------

**WEB DESIGN**

81	61.5	74.3	77.4	77.9	74.1	90.9	75.4	94.0
----	------	------	------	------	------	------	------	------

**WORLD GEOGRAPHY**

223	50.7	71.0	75.4	76.2	57.4	94.1	48.7	86.7
-----	------	------	------	------	------	------	------	------

**SEMESTER 2 TESTS**

Number Tested	Averages				% Passing		District % Passing	
	% Items Correct	Scale Score	Course Mark	Course Mark (no ACP)	ACP	Course	ACP	Course

**PHYSICS PRE-AP**

48	59.2	78.6	77.8	77.6	91.7	97.9	62.4	91.8
----	------	------	------	------	------	------	------	------

**PRE-CALCULUS**

6	38.9	69.9	81.2	83.1	50.0	100.0	48.2	82.4
---	------	------	------	------	------	-------	------	------

**PRE-CALCULUS PRE-AP**

14	45.2	68.4	81.4	83.7	50.0	100.0	62.6	90.8
----	------	------	------	------	------	-------	------	------

**READING II FOR ESL**

1	*	*	*	*	*	*	70.2	*
---	---	---	---	---	---	---	------	---

**SPANISH FOR NATIVE SPEAKERS I**

15	61.6	74.4	83.5	85.2	80.0	100.0	68.1	84.6
----	------	------	------	------	------	-------	------	------

**SPANISH FOR NATIVE SPEAKERS II**

20	52.3	68.2	81.4	83.7	50.0	100.0	69.8	88.6
----	------	------	------	------	------	-------	------	------

**SPANISH I**

167	61.3	74.2	77.2	77.5	59.9	82.9	72.9	84.3
-----	------	------	------	------	------	------	------	------

**SPANISH II**

138	67.5	78.3	78.4	78.2	74.6	85.7	76.5	89.2
-----	------	------	------	------	------	------	------	------

**U.S. HISTORY**

--	--	--	--	--	--	--	--	--

**WEB DESIGN**

39	52.5	68.3	79.8	81.7	51.3	94.6	57.6	86.1
----	------	------	------	------	------	------	------	------

**WORLD GEOGRAPHY**

215	54.5	72.7	76.6	77.2	68.8	89.7	57.7	82.9
-----	------	------	------	------	------	------	------	------

**SEMESTER 1 TESTS**

Number Tested	Averages				% Passing		District % Passing	
	% Items Correct	Scale Score	Course Mark	Course Mark (no ACP)	ACP	Course	ACP	Course

**WORLD GEOGRAPHY PRE-AP**

32	57.7	71.8	78.8	80.0	68.8	100.0	75.0	94.9
----	------	------	------	------	------	-------	------	------

**WORLD HISTORY**

189	43.8	67.6	77.2	78.9	38.1	90.7	48.3	90.0
-----	------	------	------	------	------	------	------	------

**WORLD HISTORY PRE-AP**

42	55.0	70.0	81.5	83.6	47.6	97.6	65.5	95.0
----	------	------	------	------	------	------	------	------

**SEMESTER 2 TESTS**

Number Tested	Averages				% Passing		District % Passing	
	% Items Correct	Scale Score	Course Mark	Course Mark (no ACP)	ACP	Course	ACP	Course

**WORLD GEOGRAPHY PRE-AP**

30	63.9	75.9	77.2	77.3	80.0	92.9	79.5	94.5
----	------	------	------	------	------	------	------	------

**WORLD HISTORY**

172	55.7	70.5	78.6	80.0	58.7	92.0	58.5	85.3
-----	------	------	------	------	------	------	------	------

**WORLD HISTORY PRE-AP**

44	61.7	71.3	81.9	83.6	63.6	97.6	65.4	94.3
----	------	------	------	------	------	------	------	------