

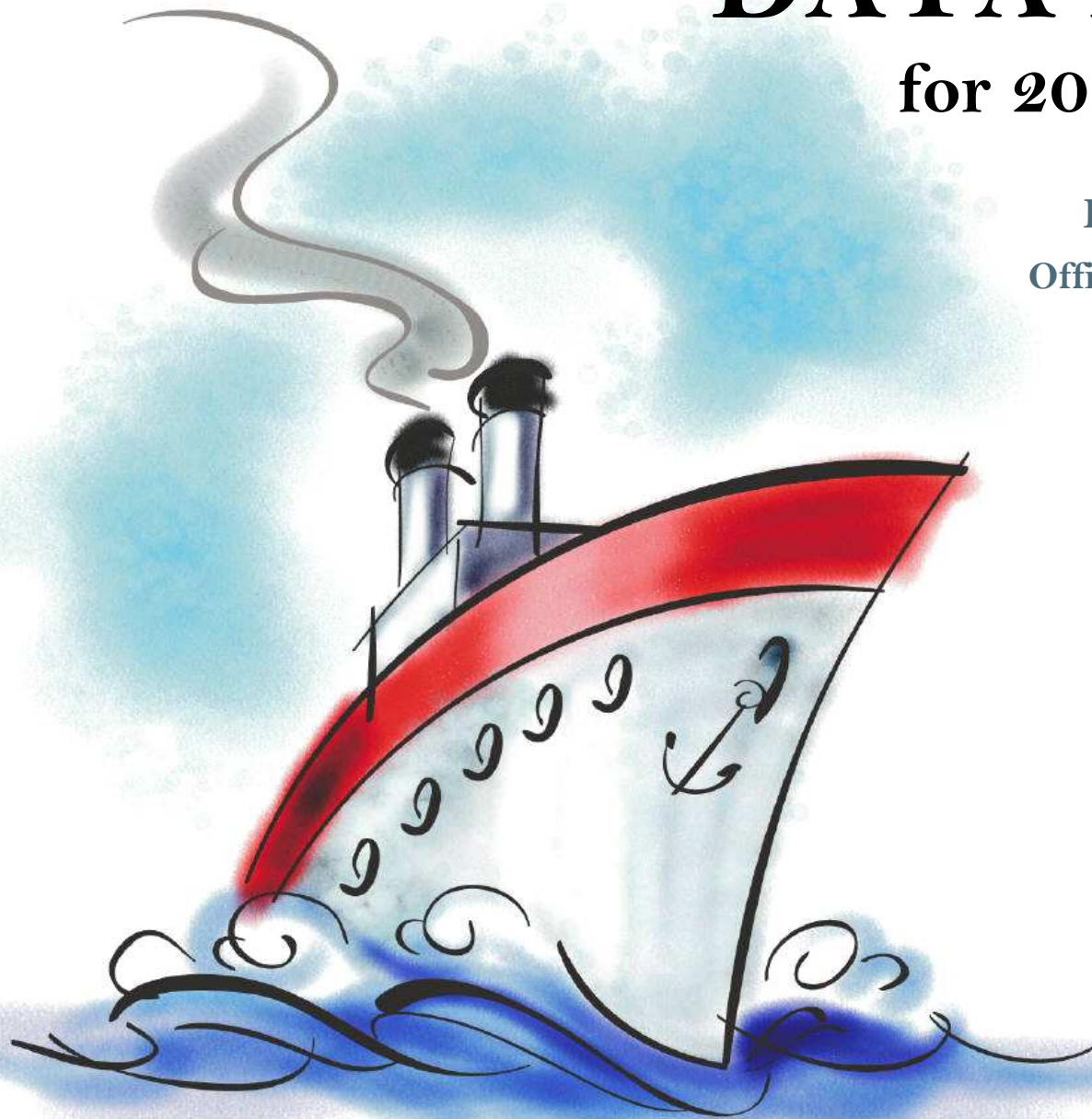
DATA PACKET

for 2014-15 planning

Evaluation & Assessment
Office of Institutional Research
<http://mydata.dallasisd.org>
OIR@dallasisd.org

September 8, 2014

**SKYLINE
FEEDER GROUP**



Dallas Independent School District

2. Contents Table of Contents

STUDENTS AND STAFF

- 5. Summary Summary of Student and Teacher Statistics
- 9. Enroll (2) Enrollment Statistics by Select Student Group
- 15. Teachers Teacher Statistics

STAAR (English)

- 16. Reading (3-8) STAAR 3-8 Reading in English
- 28. Writing (3-8) STAAR 3-8 Writing in English
- 43. Math (EOC) STAAR EOC Mathematics
- 54. Science (EOC) ... STAAR EOC Science
- 62. SS (EOC) STAAR EOC Social Studies

STAAR (Spanish)

- 66. Reading (3-8) STAAR 3-8 Reading in Spanish
- 74. Math (3-8) STAAR 3-8 Mathematics in Spanish

STAAR L

- 82. Math (3-8) STAAR L 3-8 Mathematics
- 94. Science (3-8) STAAR L 3-8 Science
- 105. SS (3-8) STAAR L 3-8 Social Studies

STAAR M

- 109. Reading (3-8) STAAR M 3-8 Reading
- 121. Writing (3-8) STAAR M 3-8 Writing
- 136. Math (EOC) STAAR M EOC Mathematics
- 147. Science (EOC) ... STAAR M EOC Science
- 155. SS (EOC) STAAR M EOC Social Studies

ITBS/LOGRAMOS

- 159. Compliance SCE Compliance for At-Risk Students
- 162. Math ITBS Mathematics Subtests

ENGLISH PROFICIENCY

- 168. WMLS Woodcock-Muñoz Language Survey

3. Notes Notes and Data Descriptions

- 6. Enroll (1) Enrollment Statistics by Ethnicity
- 12. Attendance Student Attendance Statistics

- 24. Reading (EOC) .. STAAR EOC Reading
- 35. Math (3-8) STAAR 3-8 Mathematics in English
- 47. Science (3-8) STAAR 3-8 Science in English
- 58. SS (3-8) STAAR 3-8 Social Studies in English

- 70. Writing (3-8) STAAR 3-8 Writing in Spanish
- 78. Science (3-8) STAAR 3-8 Science in Spanish

- 90. Math (EOC) STAAR L EOC Mathematics
- 101. Science (EOC) ... STAAR L EOC Science

- 117. Reading (EOC) .. STAAR M EOC Reading
- 128. Math (3-8) STAAR M 3-8 Mathematics
- 140. Science (3-8) STAAR M 3-8 Science
- 151. SS (3-8) STAAR M 3-8 Social Studies

- 160. Reading ITBS Reading Subtests
- 166. Reading Logramos Reading Subtests

- 169. TELPAS Texas English Language Proficiency Assessment System

2013-14 SCHOOL SUMMARY

- Student percentages are computed as the percentage of total student enrollment.
- Additional statistics are available in ENROLLMENT and TEACHER reports.
- Race/ethnic categories are based on the newest federal standards for ethnicity and race reporting, though some categories have been combined because of small group sizes. Students reporting their ethnicity as “Hispanic” are not counted in any race category.
- “Economically disadvantaged” students are those who qualify for free or reduced-price lunch through the federal government's program.
- Teacher demographics and assignments are from the district's Public Education Information Management System (PEIMS) submission to the TEA.

ENROLLMENT

- Statistics are based on the school's enrollment at the end of the fifth six-weeks grading period.
- “Economically disadvantaged” students are those receiving free or reduced-price lunches.
- “New” students were new to the district in 2013-14. They are counted as new if not enrolled in a district campus before the last day of the 2012-13 school year.
- The “retention rate” is the percentage of students in the same grade at the end of the fifth six-weeks grading period for both 2012-13 and 2013-14.

ATTENDANCE

- Statistics are based on student attendance through the end of the sixth six-weeks grading period (the end of the school year).
- “Average daily membership” is the total number of school days students were ENROLLED divided by the number of school days in the year.
- The “average daily attendance” number (N) is the total number of school days students were IN ATTENDANCE divided by the number of school days in the year. The “average daily attendance” percentage (%) is the average attendance rate. For each student, the number of days attended is divided by the number of days enrolled. This rate is then averaged across students.
- The number (N) of “yearly transactions” is the total number of transfer and withdrawal transactions in the school year. The percentage (%) is the number of transactions divided by “average daily membership,” which gives (on average) the percentage of the membership associated with a transaction.
- “Continuously enrolled” students are enrolled and in attendance for a minimum number of instructional days in at least one course at the school between the beginning of the school year and the first day of the main STAAR testing period. The minimum number varies depending on the school year's calendar, but is typically around 130 days.
- The “stability rate” is the number of continuously enrolled students divided by “average daily membership.”

TEACHERS

- Teacher demographics and assignments are from the district's Public Education Information Management System (PEIMS) submission to the TEA.
- Teacher absences counted towards the average DO NOT include vacation days (coded as VAC in personnel database).
- Retention rate for a school year is computed with numerator “# of teachers assigned to the school both that year and the year prior” and denominator “# of teachers assigned to the school for the prior year.” That is, the retention rate is the percentage of the prior year's teachers who continued at the school.

STAAR, STAAR L, and STAAR M

- Cells marked with an asterisk (*) indicate five or fewer students were tested. Blank cells indicate no students were tested.
- Student group assignments are from the district's Public Education Information Management System (PEIMS) submission to the TEA.
- STAAR statistics are based on results from standard STAAR only. STAAR L and STAAR M statistics are computed separately, following TEA reporting practice.
- “Percentage Satisfactory” is the percentage of students achieving Level 2 (Satisfactory) or Level 3 (Advanced).
- Statistics by reporting category are averages for all students (across student groups and genders).
- An “average percentage correct” is computed as follows: for each student, divide the number of items correctly answered by the total number of items in the test section, then average the resulting percentages across all students. For short answers on EOC English tests, an “average rating” is presented; STAAR EOC short answers are rated on a scale of 0 to 3. For written compositions on writing tests, “average score points” is presented. Additional details provided in report footnotes.
- Reading and mathematics statistics for SSI grades 5 and 8 are based on scores cumulative through the second administration. EOC statistics are based on first administration scores from the fall and spring administrations.
- Beginning in 2014, EOC Reading and EOC Writing tests were replaced with EOC English tests.

SCE COMPLIANCE and ITBS / ITED / LOGRAMOS

- Cells marked with an asterisk (*) indicate five or fewer students were tested. Blank cells indicate no students were tested.
- Student group assignments are based on demographic data in the Dallas ISD student database.
- Kindergarten ITBS reading statistics are based on the Reading Profile Total summary score. All other grades' ITBS reading statistics, and Logramos reading statistics for all grades, are based on the Reading Total summary score. (Reading Total values not available with use of the ITBS form administered in kindergarten.) “Number tested” statistics include kindergarten.
- Kindergarten ITBS mathematics statistics are based on the Mathematics subtest score. All other grades' statistics are based on the Mathematics Total summary score. (Mathematics Total values not available with use of the ITBS form administered in kindergarten.) “Number tested” statistics include kindergarten.
- Mathematics Total summary scores are combinations of the Mathematics Concepts, Problems, and Computation subtest results. For schools that did not administer Mathematics Concepts or Mathematics Problems subtests, Mathematics Computation statistics are provided separately.

TELPAS

- Students are counted as having tested if any one of the four domains is rated. Because a TELPAS composite rating is not assigned to a student unless all four domains are rated, the number of TELPAS composite ratings may be smaller than the number tested.
- If a student's composite rating did not increase at least one level from 2013 to 2014, the TEA did not report the 2013 composite rating.
- If a student is rated as advanced high in 2014, the TEA does not differentiate between the advanced and advanced high levels from 2013.

STUDENT ENROLLMENT

Grade	Enrollment
PK	476
KN	911
1	965
2	902
3	854
4	811
5	794
6	815
7	785
8	661
9	1,311
10	1,249
11	1,075
12	912
ALL	12,521

STUDENT AND TEACHER RACE/ETHNICITY

Ethnicity/Race	Students		Teachers	
	Number	Percent	Number	Percent
Black/African American	3,482	27.8	294	39.8
American Indian/Alaska Native	42	0.3	*	*
Asian/Hawaiian/Pacific Islander	89	0.7	*	*
Hispanic	8,677	69.3	176	23.8
White	162	1.3	226	30.6
Multiple	46	0.4	24	3.2
Other* (teachers only)	—	—	19	2.6
Not reported (students only)	0	0.0	—	—

*For teachers, "Other" category includes American Indian/Alaska Native and Asian/Hawaiian/Pacific Islander.

SELECT STUDENT GROUP ENROLLMENT

Group	Number	Percent
At-Risk	9,424	75.3
Economically disadvantaged	11,144	89.0
Limited English proficient (LEP)	4,589	36.7
Special education	964	7.7
Talented and Gifted (TAG)	1,376	11.0

Grade	Year	Enrollment	African American		American Indian		Asian		Hispanic		White		Multiple category	
			N	%	N	%	N	%	N	%	N	%	N	%
PK	2012	305	68	22.3	0	0.0	1	0.3	231	75.7	4	1.3	0	0.0
	2013	401	101	25.2	0	0.0	2	0.5	285	71.1	11	2.7	2	0.5
	2014	476	85	17.9	0	0.0	3	0.6	382	80.3	6	1.3	0	0.0
KN	2012	753	258	34.3	3	0.4	8	1.1	463	61.5	16	2.1	4	0.5
	2013	842	265	31.5	0	0.0	5	0.6	553	65.7	13	1.5	4	0.5
	2014	911	270	29.6	3	0.3	5	0.5	606	66.5	17	1.9	9	1.0
1	2012	745	277	37.2	2	0.3	4	0.5	436	58.5	18	2.4	6	0.8
	2013	809	292	36.1	5	0.6	9	1.1	492	60.8	9	1.1	1	0.1
	2014	965	256	26.5	1	0.1	5	0.5	683	70.8	13	1.3	6	0.6
2	2012	700	252	36.0	0	0.0	8	1.1	424	60.6	8	1.1	6	0.9
	2013	743	250	33.6	0	0.0	5	0.7	469	63.1	9	1.2	7	0.9
	2014	902	261	28.9	2	0.2	7	0.8	615	68.2	14	1.6	3	0.3
3	2012	692	238	34.4	1	0.1	5	0.7	434	62.7	10	1.4	2	0.3
	2013	733	241	32.9	0	0.0	9	1.2	465	63.4	10	1.4	6	0.8
	2014	854	257	30.1	1	0.1	5	0.6	571	66.9	10	1.2	8	0.9
4	2012	721	243	33.7	3	0.4	9	1.2	455	63.1	8	1.1	1	0.1
	2013	696	213	30.6	0	0.0	5	0.7	466	67.0	8	1.1	1	0.1
	2014	811	226	27.9	0	0.0	6	0.7	560	69.1	11	1.4	6	0.7
5	2012	662	245	37.0	1	0.2	4	0.6	405	61.2	2	0.3	4	0.6
	2013	721	224	31.1	3	0.4	10	1.4	468	64.9	10	1.4	3	0.4
	2014	794	220	27.7	0	0.0	3	0.4	555	69.9	12	1.5	1	0.1
PK-5	2012	4,578	1,581	34.5	10	0.2	39	0.9	2,848	62.2	66	1.4	23	0.5
	2013	4,945	1,586	32.1	8	0.2	45	0.9	3,198	64.7	70	1.4	24	0.5
	2014	5,713	1,575	27.6	7	0.1	34	0.6	3,972	69.5	83	1.5	33	0.6

Grade	Year	Enrollment	African American		American Indian		Asian		Hispanic		White		Multiple category	
			N	%	N	%	N	%	N	%	N	%	N	%
6	2012	383	167	43.6	2	0.5	6	1.6	197	51.4	6	1.6	2	0.5
	2013	755	262	34.7	1	0.1	2	0.3	484	64.1	2	0.3	3	0.4
	2014	815	234	28.7	3	0.4	8	1.0	547	67.1	19	2.3	2	0.2
7	2012	421	177	42.0	2	0.5	2	0.5	224	53.2	6	1.4	7	1.7
	2013	627	212	33.8	3	0.5	7	1.1	389	62.0	10	1.6	3	0.5
	2014	785	252	32.1	0	0.0	2	0.3	526	67.0	4	0.5	1	0.1
8	2012	428	186	43.5	3	0.7	8	1.9	227	53.0	3	0.7	1	0.2
	2013	623	219	35.2	2	0.3	3	0.5	379	60.8	8	1.3	8	1.3
	2014	661	214	32.4	3	0.5	8	1.2	423	64.0	9	1.4	1	0.2
6-8	2012	1,232	530	43.0	7	0.6	16	1.3	648	52.6	15	1.2	10	0.8
	2013	2,005	693	34.6	6	0.3	12	0.6	1,252	62.4	20	1.0	14	0.7
	2014	2,261	700	31.0	6	0.3	18	0.8	1,496	66.2	32	1.4	4	0.2

Grade	Year	Enrollment	African American		American Indian		Asian		Hispanic		White		Multiple category	
			N	%	N	%	N	%	N	%	N	%	N	%
9	2012	1,165	297	25.5	7	0.6	11	0.9	798	68.5	48	4.1	1	0.1
	2013	1,350	376	27.9	7	0.5	15	1.1	935	69.3	14	1.0	3	0.2
	2014	1,311	343	26.2	5	0.4	6	0.5	935	71.3	12	0.9	5	0.4
10	2012	939	270	28.8	7	0.7	11	1.2	635	67.6	12	1.3	2	0.2
	2013	1,049	270	25.7	6	0.6	7	0.7	726	69.2	36	3.4	1	0.1
	2014	1,249	345	27.6	8	0.6	14	1.1	873	69.9	7	0.6	2	0.2
11	2012	1,048	259	24.7	5	0.5	18	1.7	745	71.1	16	1.5	3	0.3
	2013	898	244	27.2	5	0.6	12	1.3	625	69.6	8	0.9	2	0.2
	2014	1,075	269	25.0	12	1.1	7	0.7	762	70.9	22	2.0	0	0.0
12	2012	956	246	25.7	4	0.4	7	0.7	686	71.8	11	1.2	1	0.1
	2013	1,032	258	25.0	5	0.5	16	1.6	732	70.9	16	1.6	4	0.4
	2014	912	250	27.4	4	0.4	10	1.1	639	70.1	6	0.7	2	0.2
9-12	2012	4,108	1,072	26.1	23	0.6	47	1.1	2,864	69.7	87	2.1	7	0.2
	2013	4,329	1,148	26.5	23	0.5	50	1.2	3,018	69.7	74	1.7	10	0.2
	2014	4,547	1,207	26.5	29	0.6	37	0.8	3,209	70.6	47	1.0	9	0.2
ALL	2012	9,918	3,183	32.1	40	0.4	102	1.0	6,360	64.1	168	1.7	40	0.4
	2013	11,279	3,427	30.4	37	0.3	107	0.9	7,468	66.2	164	1.5	48	0.4
	2014	12,521	3,482	27.8	42	0.3	89	0.7	8,677	69.3	162	1.3	46	0.4

Grade	Year	Enrollment	Economically Disadvantaged		LEP		Special Education		At Risk		TAG		New (to District)		Gender		Retention Rate (%)
			N	%	N	%	N	%	N	%	N	%	N	%	% Male	% Female	
PK	2012	305	299	98.0	186	61.0	8	2.6	198	64.9	0	0.0	303	99.3	49.5	50.5	0.3
	2013	401	388	96.8	242	60.3	15	3.7	246	61.3	0	0.0	395	98.5	51.6	48.4	0.0
	2014	476	457	96.0	283	59.5	14	2.9	295	62.0	0	0.0	463	97.3	48.1	51.9	1.5
KN	2012	753	721	95.8	343	45.6	20	2.7	412	54.7	14	1.9	372	49.4	52.6	47.4	1.6
	2013	842	812	96.4	395	46.9	44	5.2	420	49.9	20	2.4	446	53.0	50.8	49.2	2.0
	2014	911	867	95.2	431	47.3	35	3.8	469	51.5	23	2.5	405	44.5	53.2	46.8	2.0
1	2012	745	724	97.2	321	43.1	46	6.2	413	55.4	57	7.7	102	13.7	50.5	49.5	5.5
	2013	809	777	96.0	351	43.4	38	4.7	436	53.9	66	8.2	82	10.1	53.2	46.8	4.1
	2014	965	922	95.5	485	50.3	65	6.7	544	56.4	83	8.6	95	9.8	52.0	48.0	4.5
2	2012	700	672	96.0	321	45.9	47	6.7	582	83.1	73	10.4	74	10.6	53.0	47.0	5.6
	2013	743	724	97.4	352	47.4	47	6.3	577	77.7	96	12.9	65	8.7	53.3	46.7	2.2
	2014	902	870	96.5	437	48.4	74	8.2	709	78.6	94	10.4	78	8.6	53.0	47.0	4.9
3	2012	692	665	96.1	345	49.9	63	9.1	583	84.2	73	10.5	83	12.0	50.3	49.7	2.5
	2013	733	709	96.7	355	48.4	52	7.1	635	86.6	77	10.5	67	9.1	51.8	48.2	4.2
	2014	854	806	94.4	434	50.8	75	8.8	714	83.6	103	12.1	97	11.4	55.4	44.6	3.6
4	2012	721	688	95.4	358	49.7	63	8.7	617	85.6	105	14.6	90	12.5	51.5	48.5	1.5
	2013	696	670	96.3	374	53.7	77	11.1	576	82.8	80	11.5	66	9.5	49.9	50.1	1.6
	2014	811	779	96.1	425	52.4	75	9.2	717	88.4	102	12.6	84	10.4	50.8	49.2	1.8
5	2012	662	642	97.0	283	42.7	61	9.2	537	81.1	117	17.7	74	11.2	51.4	48.6	1.4
	2013	721	691	95.8	351	48.7	69	9.6	605	83.9	118	16.4	70	9.7	53.7	46.3	0.1
	2014	794	743	93.6	415	52.3	98	12.3	703	88.5	108	13.6	86	10.8	49.4	50.6	1.5
PK-5	2012	4,578	4,411	96.4	2,157	47.1	308	6.7	3,342	73.0	439	9.6	1,098	24.0	51.4	48.6	2.8
	2013	4,945	4,771	96.5	2,420	48.9	342	6.9	3,495	70.7	457	9.2	1,191	24.1	52.1	47.9	2.2
	2014	5,713	5,444	95.3	2,910	50.9	436	7.6	4,151	72.7	513	9.0	1,308	22.9	52.0	48.0	3.0

Grade	Year	Enrollment	Economically Disadvantaged		LEP		Special Education		At Risk		TAG		New (to District)		Gender		Retention Rate (%)
			N	%	N	%	N	%	N	%	N	%	N	%	% Male	% Female	
6	2012	383	353	92.2	142	37.1	46	12.0	275	71.8	46	12.0	44	11.5	52.5	47.5	0.5
	2013	755	723	95.8	311	41.2	84	11.1	619	82.0	98	13.0	69	9.1	50.9	49.1	1.5
	2014	815	759	93.1	423	51.9	88	10.8	741	90.9	104	12.8	71	8.7	53.1	46.9	2.8
7	2012	421	391	92.9	103	24.5	49	11.6	296	70.3	27	6.4	52	12.4	50.6	49.4	1.4
	2013	627	597	95.2	262	41.8	66	10.5	477	76.1	70	11.2	92	14.7	53.3	46.7	4.8
	2014	785	720	91.7	312	39.7	88	11.2	679	86.5	89	11.3	87	11.1	51.2	48.8	2.2
8	2012	428	381	89.0	88	20.6	65	15.2	317	74.1	24	5.6	49	11.4	48.1	51.9	0.9
	2013	623	586	94.1	165	26.5	70	11.2	423	67.9	52	8.3	62	10.0	47.7	52.3	1.1
	2014	661	589	89.1	228	34.5	70	10.6	565	85.5	62	9.4	77	11.6	52.8	47.2	1.1
6-8	2012	1,232	1,125	91.3	333	27.0	160	13.0	888	72.1	97	7.9	145	11.8	50.3	49.7	1.0
	2013	2,005	1,906	95.1	738	36.8	220	11.0	1,519	75.8	220	11.0	223	11.1	50.6	49.4	2.4
	2014	2,261	2,068	91.5	963	42.6	246	10.9	1,985	87.8	255	11.3	235	10.4	52.4	47.6	2.1

Grade	Year	Enrollment	Economically Disadvantaged		LEP		Special Education		At Risk		TAG		New (to District)		Gender		Retention Rate (%)
			N	%	N	%	N	%	N	%	N	%	N	%	% Male	% Female	
9	2012	1,165	987	84.7	215	18.5	69	5.9	636	54.6	189	16.2	186	16.0	52.2	47.8	6.1
	2013	1,350	1,147	85.0	268	19.9	96	7.1	800	59.3	179	13.3	168	12.4	48.8	51.2	3.0
	2014	1,311	1,087	82.9	286	21.8	101	7.7	902	68.8	202	15.4	202	15.4	50.6	49.4	2.6
10	2012	939	773	82.3	97	10.3	55	5.9	581	61.9	140	14.9	51	5.4	48.8	51.2	2.1
	2013	1,049	884	84.3	138	13.2	45	4.3	589	56.1	176	16.8	47	4.5	49.1	50.9	0.7
	2014	1,249	990	79.3	210	16.8	88	7.0	939	75.2	161	12.9	49	3.9	49.0	51.0	0.3
11	2012	1,048	856	81.7	116	11.1	53	5.1	662	63.2	175	16.7	31	3.0	50.5	49.5	0.7
	2013	898	734	81.7	91	10.1	49	5.5	622	69.3	113	12.6	30	3.3	47.0	53.0	0.8
	2014	1,075	851	79.2	157	14.6	43	4.0	792	73.7	154	14.3	39	3.6	49.4	50.6	1.0
12	2012	956	794	83.1	64	6.7	54	5.6	603	63.1	166	17.4	22	2.3	48.4	51.6	2.8
	2013	1,032	842	81.6	83	8.0	56	5.4	687	66.6	129	12.5	27	2.6	48.5	51.5	2.9
	2014	912	704	77.2	63	6.9	50	5.5	655	71.8	91	10.0	17	1.9	47.7	52.3	4.2
9-12	2012	4,108	3,410	83.0	492	12.0	231	5.6	2,482	60.4	670	16.3	290	7.1	50.1	49.9	3.0
	2013	4,329	3,607	83.3	580	13.4	246	5.7	2,698	62.3	597	13.8	272	6.3	48.4	51.6	2.0
	2014	4,547	3,632	79.9	716	15.7	282	6.2	3,288	72.3	608	13.4	307	6.8	49.3	50.7	1.9
ALL	2012	9,918	8,946	90.2	2,982	30.1	699	7.0	6,712	67.7	1,206	12.2	1,533	15.5	50.7	49.3	2.7
	2013	11,279	10,284	91.2	3,738	33.1	808	7.2	7,712	68.4	1,274	11.3	1,686	14.9	50.4	49.6	2.1
	2014	12,521	11,144	89.0	4,589	36.7	964	7.7	9,424	75.3	1,376	11.0	1,850	14.8	51.1	48.9	2.4

Grade	Year	Average Daily Membership		Average Daily Attendance				Yearly Transactions			Continuously Enrolled		Stability Rate	
		N	District	N	%	District N	District %	N	%	District %	N	District	%	District
KN	2012	749	13,633	716	95.6	13,086	96.0	191	25.5	19.9	620	11,731	82.8	86.0
	2013	849	14,067	803	94.7	13,411	95.3	229	27.0	20.0	696	12,178	82.0	86.6
	2014	901	13,618	858	95.3	13,058	95.9	241	26.8	19.8	711	11,271	78.9	82.8
1	2012	731	14,026	701	95.9	13,533	96.5	194	26.5	18.3	606	12,292	82.9	87.6
	2013	804	14,140	767	95.4	13,578	96.0	213	26.5	18.7	686	12,528	85.3	88.6
	2014	965	14,262	926	95.9	13,732	96.3	223	23.1	19.2	804	12,149	83.3	85.2
2	2012	697	13,338	673	96.5	12,932	97.0	164	23.5	16.8	595	11,883	85.3	89.1
	2013	753	13,555	723	96.1	13,077	96.5	179	23.8	17.1	652	12,206	86.6	90.0
	2014	905	13,652	873	96.4	13,209	96.8	193	21.3	17.0	757	11,868	83.6	86.9
3	2012	689	12,874	668	96.8	12,508	97.2	155	22.5	15.5	593	11,592	86.0	90.0
	2013	739	12,879	715	96.7	12,466	96.8	177	24.0	15.9	650	11,710	88.0	90.9
	2014	848	13,159	821	96.8	12,763	97.0	207	24.4	17.3	708	11,491	83.5	87.3
4	2012	714	12,493	692	97.0	12,139	97.2	168	23.5	16.6	621	11,218	87.0	89.8
	2013	696	12,406	675	96.9	12,029	97.0	162	23.3	16.5	626	11,339	89.9	91.4
	2014	815	12,543	789	96.8	12,180	97.1	162	19.9	16.3	702	11,075	86.1	88.3
5	2012	653	12,562	633	96.8	12,220	97.3	47	7.2	5.3	567	11,364	86.8	90.5
	2013	727	12,053	704	96.8	11,696	97.0	69	9.5	6.2	631	11,075	86.8	91.9
	2014	794	12,130	771	97.1	11,795	97.2	54	6.8	5.4	682	10,790	85.9	89.0
KN-5	2012	4,234	78,926	4,083	96.4	76,419	96.8	919	21.7	15.5	3,602	70,080	85.1	88.8
	2013	4,569	79,100	4,387	96.0	76,255	96.4	1,029	22.5	16.0	3,941	71,036	86.3	89.8
	2014	5,228	79,365	5,037	96.4	76,736	96.7	1,080	20.7	16.0	4,364	68,644	83.5	86.5

Grade	Year	Average Daily Membership		Average Daily Attendance				Yearly Transactions			Continuously Enrolled		Stability Rate	
		N	District	N	%	District N	District %	N	%	District %	N	District	%	District
6	2012	384	10,683	366	95.4	10,315	96.6	101	26.3	17.6	317	9,420	82.5	88.2
	2013	757	11,463	729	96.3	11,062	96.5	191	25.2	21.1	655	10,320	86.5	90.0
	2014	817	10,808	786	96.2	10,413	96.3	181	22.2	20.0	705	9,554	86.3	88.4
7	2012	421	10,204	397	94.1	9,727	95.3	127	30.1	23.8	323	8,576	76.7	84.0
	2013	636	10,542	609	95.8	10,116	96.0	180	28.3	24.5	547	9,357	86.0	88.8
	2014	792	11,195	759	95.9	10,729	95.8	180	22.7	22.1	680	9,852	85.8	88.0
8	2012	429	10,369	403	93.9	9,838	94.9	81	18.9	15.5	335	8,711	78.0	84.0
	2013	618	9,955	588	95.2	9,486	95.3	72	11.7	17.6	528	8,664	85.5	87.0
	2014	655	10,449	624	95.2	9,970	95.4	80	12.2	13.1	544	9,097	83.1	87.1
6-8	2012	1,235	31,256	1,166	94.4	29,880	95.6	309	25.0	18.9	975	26,707	79.0	85.4
	2013	2,011	31,960	1,927	95.8	30,665	96.0	443	22.0	21.1	1,730	28,341	86.0	88.7
	2014	2,264	32,451	2,169	95.8	31,112	95.9	441	19.5	18.5	1,929	28,503	85.2	87.8

Grade	Year	Average Daily Membership		Average Daily Attendance				Yearly Transactions			Continuously Enrolled		Stability Rate	
		N	District	N	%	District N	District %	N	%	District %	N	District	%	District
9	2012	1,178	10,922	1,097	93.1	10,196	93.3	173	14.7	27.8	976	8,726	82.8	79.9
	2013	1,376	11,153	1,303	94.7	10,499	94.1	185	13.4	28.3	1,190	9,388	86.5	84.2
	2014	1,315	10,850	1,230	93.5	10,242	94.4	232	17.6	28.4	1,162	9,091	88.4	83.8
10	2012	943	9,007	885	93.8	8,431	93.6	102	10.8	20.6	791	7,332	83.9	81.4
	2013	1,073	9,331	1,025	95.5	8,812	94.4	99	9.2	20.5	963	8,042	89.7	86.2
	2014	1,274	9,898	1,212	95.2	9,367	94.6	126	9.9	20.3	1,179	8,628	92.6	87.2
11	2012	1,060	8,913	995	93.9	8,306	93.2	63	5.9	15.9	920	7,319	86.8	82.1
	2013	927	8,457	874	94.3	7,949	94.0	79	8.5	18.9	811	7,295	87.4	86.3
	2014	1,094	8,467	1,038	94.9	8,005	94.5	80	7.3	18.1	1,024	7,476	93.6	88.3
12	2012	948	8,178	888	93.7	7,571	92.6	40	4.2	12.6	816	6,742	86.1	82.4
	2013	1,035	8,199	969	93.6	7,661	93.4	67	6.5	14.9	922	7,269	89.1	88.7
	2014	904	7,886	848	93.8	7,407	93.9	48	5.3	15.2	828	7,027	91.6	89.1
9-12	2012	4,129	37,021	3,864	93.6	34,504	93.2	378	9.2	19.8	3,503	30,119	84.8	81.4
	2013	4,412	37,140	4,171	94.5	34,922	94.0	430	9.7	21.2	3,886	31,994	88.1	86.1
	2014	4,587	37,101	4,329	94.4	35,021	94.4	486	10.6	21.1	4,193	32,222	91.4	86.8

Teachers: 739

DISTRIBUTIONS

Ethnicity/Race	Number	Percentage
African American	294	39.8
Hispanic	176	23.8
White	226	30.6
Multiple	24	3.2
Other	19	2.6

Gender	Number	Percentage
Female	507	68.6
Male	232	31.4

ATTENDANCE / RETENTION

	Average Absences	Retention Rate
2011-12	7.8	—
2012-13	7.1	73.7
2013-14	7.3	73.5

YEARS EXPERIENCE

Years	Number	Percentage
Beginning (0)	86	11.6
1	68	9.2
2	19	2.6
3	29	3.9
4	43	5.8
5	43	5.8
1-3	116	15.7
More than 3	537	72.7
1 - 5	202	27.3
6 - 10	173	23.4
11 - 20	171	23.1
More than 20	107	14.5

PERCENTAGE SATISFACTORY (Levels 2 or 3)

Grade	Year	White	African Amer	Hispanic	Econ Disadv	Special Educ	LEP	At Risk	Migrant	Male	Female	All	District	Number Tested (All Students)
3	2012	62.5	48.2	67.9	55.1	22.7	49.0	44.9		54.0	57.5	55.8	63.6	373
	2013	66.7	52.6	65.1	55.6	57.1	45.3	47.4		56.0	58.8	57.4	67.8	408
	2014	75.0	47.3	63.6	53.7	30.0	51.0	39.2	*	52.4	58.0	55.1	61.7	434
4	2012	*	57.7	63.0	59.8	22.7	37.7	36.1		58.7	61.1	59.9	64.3	377
	2013	66.7	54.3	51.1	52.1	10.5	39.6	36.6		52.1	54.3	53.2	62.3	340
	2014	60.0	44.5	60.8	51.7	40.9	38.7	37.9		51.6	54.0	52.8	59.4	424
5	2012	*	61.9	60.8	61.0	45.0	52.9	47.1		59.7	64.0	61.8	68.0	432
	2013	57.1	75.4	79.4	76.3	70.4	75.0	65.7		73.6	80.6	77.0	81.5	426
	2014	87.5	76.3	82.1	79.2	57.1	74.5	71.1		74.2	83.0	78.9	78.5	408
3-5	2012	57.1	56.0	63.5	58.8	29.7	48.1	43.5		57.6	61.0	59.3	65.5	1,182
	2013	63.6	60.5	67.0	62.1	48.3	58.6	52.3		61.4	65.2	63.3	71.1	1,174
	2014	73.1	55.3	69.1	61.2	43.5	58.0	49.6	*	58.7	65.3	62.0	66.7	1,266

NUMBER TESTED IN GRADES 3-5													
2012	14	672	463	1,114	64	206	669		587	595	1,182	22,173	
2013	22	621	488	1,103	60	210	574		594	580	1,174	21,619	
2014	26	646	557	1,133	46	207	800	1	632	634	1,266	21,304	

PERCENTAGE SATISFACTORY (Levels 2 or 3)

Grade	Year	White	African Amer	Hispanic	Econ Disadv	Special Educ	LEP	At Risk	Migrant	Male	Female	All	District	Number Tested (All Students)
6	2012	*	61.8	54.1	58.0	33.3	47.3	44.7		50.6	65.9	58.1	63.5	353
	2013	*	50.7	47.7	48.4	20.0	42.0	37.1		47.2	50.6	48.9	57.7	693
	2014	76.5	57.3	63.4	62.1	26.9	60.5	57.3		59.6	64.9	62.3	63.1	763
7	2012	100.0	53.5	63.6	59.1	25.0	45.2	46.6		52.4	68.4	60.5	67.5	382
	2013	87.5	69.4	60.6	63.8	25.0	51.6	52.9		62.0	65.6	63.8	67.3	588
	2014	*	56.5	53.2	55.1	25.9	44.1	46.1		52.7	56.5	54.6	60.5	727
8	2012	*	59.8	66.2	63.4	24.2	46.3	50.2		65.8	61.8	63.7	71.3	391
	2013	100.0	81.4	84.5	83.8	66.7	67.9	76.8		82.2	85.2	83.8	82.7	575
	2014	66.7	78.6	75.5	77.6	50.0	61.5	69.9		74.8	78.0	76.3	81.5	612
6-8	2012	84.6	58.4	61.6	60.2	26.6	46.4	47.2		56.3	65.3	60.8	67.4	1,126
	2013	94.4	66.3	62.8	64.1	37.7	51.0	53.9		62.4	66.4	64.4	68.6	1,856
	2014	75.0	63.5	63.2	64.2	31.9	55.4	56.9		61.9	65.6	63.7	68.2	2,102

NUMBER TESTED IN GRADES 6-8													
2012	13	483	588	1,002	64	304	674		556	570	1,126	29,211	
2013	18	621	1,180	1,751	61	718	1,140		913	943	1,856	29,692	
2014	28	635	1,409	1,867	69	890	1,608		1,062	1,040	2,102	30,015	

NUMBER UNSATISFACTORY (Level 1)

Grade	Year	White	African Amer	Hispanic	Econ Disadv	Special Educ	LEP	At Risk	Migrant	Male	Female	All	District	Number Tested (All Students)
3	2012	3	117	42	157	17	26	134		86	79	165	2,466	373
	2013	3	109	53	172	6	29	144		92	82	174	2,181	408
	2014	2	125	63	181	7	25	160	*	109	86	195	2,649	434
4	2012	*	93	51	141	17	33	108		74	77	151	2,529	377
	2013	2	86	67	151	17	32	59		79	80	159	2,581	340
	2014	4	117	74	184	13	38	164		103	97	200	2,858	424
5	2012	*	86	76	161	11	48	136		89	76	165	2,665	432
	2013	3	50	41	95	8	26	71		58	40	98	1,484	426
	2014	1	47	35	75	6	24	79		49	37	86	1,582	408
3-5	2012	6	296	169	459	45	107	378		249	232	481	7,660	1,182
	2013	8	245	161	418	31	87	274		229	202	431	6,246	1,174
	2014	7	289	172	440	26	87	403	*	261	220	481	7,089	1,266

NUMBER TESTED IN GRADES 3-5													
2012	14	672	463	1,114	64	206	669		587	595	1,182	22,173	
2013	22	621	488	1,103	60	210	574		594	580	1,174	21,619	
2014	26	646	557	1,133	46	207	800	1	632	634	1,266	21,304	

NUMBER UNSATISFACTORY (Level 1)

Grade	Year	White	African Amer	Hispanic	Econ Disadv	Special Educ	LEP	At Risk	Migrant	Male	Female	All	District	Number Tested (All Students)
6	2012	*	58	83	134	10	68	120		89	59	148	3,673	353
	2013	*	113	238	342	16	182	273		181	173	354	4,523	693
	2014	4	94	188	266	19	156	264		155	133	288	3,679	763
7	2012	0	73	75	143	12	51	126		90	61	151	3,070	382
	2013	1	59	146	199	15	120	176		114	99	213	3,215	588
	2014	*	97	232	281	20	162	297		169	161	330	4,075	727
8	2012	*	70	68	122	25	44	110		64	78	142	2,786	391
	2013	0	37	55	87	7	50	77		48	45	93	1,586	575
	2014	2	41	98	121	8	79	132		81	64	145	1,797	612
6-8	2012	2	201	226	399	47	163	356		243	198	441	9,529	1,126
	2013	1	209	439	628	38	352	526		343	317	660	9,324	1,856
	2014	7	232	518	668	47	397	693		405	358	763	9,551	2,102

NUMBER TESTED IN GRADES 6-8													
2012	13	483	588	1,002	64	304	674		556	570	1,126	29,211	
2013	18	621	1,180	1,751	61	718	1,140		913	943	1,856	29,692	
2014	28	635	1,409	1,867	69	890	1,608		1,062	1,040	2,102	30,015	

PERCENTAGE ADVANCED (Level 3)

Grade	Year	White	African Amer	Hispanic	Econ Disadv	Special Educ	LEP	At Risk	Migrant	Male	Female	All	District	Number Tested (All Students)
3	2012	37.5	7.5	7.6	8.0	0.0	2.0	2.5		7.5	9.1	8.3	12.6	373
	2013	33.3	3.5	6.6	4.7	7.1	5.7	1.8		4.3	6.5	5.4	13.6	408
	2014	12.5	3.0	6.9	5.6	0.0	3.9	0.8	*	5.2	5.4	5.3	9.6	434
4	2012	*	8.2	10.1	8.0	4.5	3.8	1.8		8.9	9.1	9.0	11.2	377
	2013	0.0	6.9	10.9	7.6	0.0	7.5	4.3		9.7	8.0	8.8	13.5	340
	2014	20.0	4.3	11.1	6.8	4.5	8.1	2.3		8.5	6.6	7.5	12.0	424
5	2012	*	6.2	8.8	7.3	0.0	3.9	2.7		7.2	7.6	7.4	11.1	432
	2013	42.9	6.9	10.1	7.7	0.0	5.8	3.4		7.3	10.7	8.9	13.3	426
	2014	0.0	6.6	10.3	8.0	0.0	11.7	4.8		9.5	7.8	8.6	11.5	408
3-5	2012	28.6	7.3	8.9	7.7	1.6	3.4	2.4		7.8	8.6	8.2	11.6	1,182
	2013	27.3	5.6	9.2	6.6	1.7	6.2	2.8		6.9	8.4	7.7	13.5	1,174
	2014	11.5	4.5	9.5	6.8	2.2	8.7	2.6	*	7.6	6.6	7.1	11.1	1,266

NUMBER TESTED IN GRADE 3-5													
2012	14	672	463	1,114	64	206	669		587	595	1,182	22,173	
2013	22	621	488	1,103	60	210	574		594	580	1,174	21,619	
2014	26	646	557	1,133	46	207	800	1	632	634	1,266	21,304	

PERCENTAGE ADVANCED (Level 3)

Grade	Year	White	African Amer	Hispanic	Econ Disadv	Special Educ	LEP	At Risk	Migrant	Male	Female	All	District	Number Tested (All Students)
6	2012	*	7.2	3.3	5.0	0.0	2.3	2.3		6.7	4.6	5.7	8.3	353
	2013	*	4.8	4.8	4.8	0.0	2.9	0.9		2.9	6.9	4.9	11.3	693
	2014	5.9	0.9	4.9	4.1	3.8	4.8	3.4		4.2	4.0	4.1	7.1	763
7	2012	14.3	4.5	3.9	4.3	0.0	0.0	2.5		1.6	7.3	4.5	10.3	382
	2013	12.5	7.3	5.4	5.8	0.0	4.0	3.2		6.3	5.9	6.1	8.7	588
	2014	*	5.4	5.0	5.3	0.0	0.7	0.5		5.3	5.7	5.5	10.0	727
8	2012	*	3.4	7.5	5.7	3.0	1.2	1.8		3.2	8.3	5.9	9.9	391
	2013	25.0	7.0	13.6	11.9	0.0	6.4	5.7		9.3	14.1	11.8	15.5	575
	2014	16.7	9.4	9.3	9.8	0.0	2.4	2.7		8.1	11.0	9.5	13.1	612
6-8	2012	23.1	5.0	4.9	5.0	1.6	1.3	2.2		3.8	6.8	5.3	9.5	1,126
	2013	22.2	6.3	7.6	7.3	0.0	4.0	3.1		5.9	8.9	7.4	11.7	1,856
	2014	14.3	5.0	6.2	6.2	1.4	2.9	2.2		5.7	6.5	6.1	10.1	2,102

NUMBER TESTED IN GRADE 6-8													
2012	13	483	588	1,002	64	304	674		556	570	1,126	29,211	
2013	18	621	1,180	1,751	61	718	1,140		913	943	1,856	29,692	
2014	28	635	1,409	1,867	69	890	1,608		1,062	1,040	2,102	30,015	

AVERAGE PERCENTAGE OF ITEMS CORRECT BY REPORTING CATEGORY

Grade	Year	REPORTING CATEGORY		
		1. Understanding Across Genres (GR 3-5) 1. Understanding/Analysis Across Genres (GR 6-8)	2. Understanding/Analysis of Literary Texts	3. Understanding/Analysis of Informational Texts
3	2012	56.7	49.9	56.3
	2013	56.4	51.2	52.7
	2014	59.4	57.4	50.8
4	2012	60.1	58.0	53.9
	2013	61.4	55.0	55.6
	2014	56.3	55.1	51.9
5	2012	60.3	54.6	62.6
	2013	66.1	65.5	64.7
	2014	66.4	62.8	66.0
3-5	2012	59.1	54.2	57.8
	2013	61.4	57.5	57.9
	2014	60.6	58.4	56.1

AVERAGE PERCENTAGE OF ITEMS CORRECT BY REPORTING CATEGORY

Grade	Year	REPORTING CATEGORY		
		1. Understanding Across Genres (GR 3-5) 1. Understanding/Analysis Across Genres (GR 6-8)	2. Understanding/Analysis of Literary Texts	3. Understanding/Analysis of Informational Texts
6	2012	62.6	60.6	56.2
	2013	57.8	56.2	53.8
	2014	58.4	56.2	57.4
7	2012	64.5	53.6	57.0
	2013	57.3	55.4	63.8
	2014	58.5	54.6	51.2
8	2012	61.6	54.2	57.3
	2013	68.4	67.3	61.2
	2014	63.8	61.7	59.8
6-8	2012	62.9	56.0	56.8
	2013	60.9	59.4	59.2
	2014	60.0	57.2	56.0

PERCENTAGE SATISFACTORY (Levels 2 and 3)

Test	Year	White	African Amer	Hispanic	Econ Disadv	Special Educ	LEP	At Risk	Migrant	Male	Female	All	District
ENGLISH I	2012												
	2013												
	2014	70.0	50.7	56.8	56.1	16.9	25.8	35.6	*	50.6	60.9	55.6	50.9
Tests Taken	2012												
	2013												
	2014	10	359	1,021	1,190	71	322	848	1	721	695	1,416	13,789
ENGLISH II	2012												
	2013												
	2014	66.7	52.3	59.4	57.0	15.6	32.1	43.3		53.6	61.5	57.7	54.8
Tests Taken	2012												
	2013												
	2014	9	352	935	1,041	45	243	875		638	684	1,322	10,943

NUMBER UNSATISFACTORY (Level 1)

Test	Year	White	African Amer	Hispanic	Econ Disadv	Special Educ	LEP	At Risk	Migrant	Male	Female	All	District
ENGLISH I	2012												
	2013												
	2014	3	177	441	523	59	239	546	*	356	272	628	6,774
Tests Taken	2012												
	2013												
	2014	10	359	1,021	1,190	71	322	848	1	721	695	1,416	13,789
ENGLISH II	2012												
	2013												
	2014	3	168	380	448	38	165	496		296	263	559	4,948
Tests Taken	2012												
	2013												
	2014	9	352	935	1,041	45	243	875		638	684	1,322	10,943

PERCENTAGE ADVANCED (Level 3)

Test	Year	White	African Amer	Hispanic	Econ Disadv	Special Educ	LEP	At Risk	Migrant	Male	Female	All	District
ENGLISH I	2012												
	2013												
	2014	10.0	0.8	0.9	1.0	0.0	0.0	0.1	*	0.3	1.7	1.0	3.2
Tests Taken	2012												
	2013												
	2014	10	359	1,021	1,190	71	322	848	1	721	695	1,416	13,789
ENGLISH II	2012												
	2013												
	2014	0.0	0.6	1.0	0.7	0.0	0.4	0.2		0.2	1.5	0.8	2.7
Tests Taken	2012												
	2013												
	2014	9	352	935	1,041	45	243	875		638	684	1,322	10,943

AVERAGE PERCENTAGE OF ITEMS CORRECT BY REPORTING CATEGORY

ENGLISH I	1. Understanding & Analysis Across Genres	1. Average Rating Short Answer #1 ¹	1. Average Rating Short Answer #2 ¹	2. Understanding & Analysis of Literary Texts	3. Understanding & Analysis of Informational Texts	4. Expository Composition ²	5. Revision	6. Editing
2012								
2013								
2014	64.5	1.0	1.1	61.3	62.0	4.0	69.1	55.3

ENGLISH II	1. Understanding & Analysis Across Genres	1. Average Rating Short Answer #1 ¹	1. Average Rating Short Answer #2 ¹	2. Understanding & Analysis of Literary Texts	3. Understanding & Analysis of Informational Texts	4. Persuasive Composition ²	5. Revision	6. Editing
2012								
2013								
2014	74.7	1.0	1.2	52.4	67.0	4.2	67.7	68.4

¹Short answer rating scale: 0=Insufficient; 1=Partially Sufficient; 2=Sufficient; 3=Exemplary

²Average score points (0-8). A composition is rated twice on a scale of 1 to 4, and the ratings are summed to determine score points for the composition. Score point scale: 0=Nonscorable; 2=Very Limited; 3=between Very Limited and Basic; 4=Basic; 5=between Basic and Satisfactory; 6=Satisfactory; 7=between Satisfactory and Accomplished; 8=Accomplished

PERCENTAGE SATISFACTORY (Levels 2 or 3)

Grade	Year	White	African Amer	Hispanic	Econ Disadv	Special Educ	LEP	At Risk	Migrant	Male	Female	All	District	Number Tested (All Students)
4	2012	*	48.6	59.7	53.3	7.7	33.3	30.2		50.3	56.1	53.3	60.6	379
	2013	66.7	56.8	53.0	54.4	15.0	46.2	38.3		53.0	58.3	55.8	63.9	339
	2014	60.0	48.1	65.4	55.6	27.3	56.1	42.4		50.2	64.1	57.1	61.9	417

NUMBER TESTED IN GRADE 4													
2012	3	222	139	353	26	51	169		181	198	379	7,039	
2013	6	190	134	316	20	52	94		164	175	339	6,771	
2014	10	208	185	376	22	57	257		211	206	417	7,022	

PERCENTAGE SATISFACTORY (Levels 2 or 3)

Grade	Year	White	African Amer	Hispanic	Econ Disadv	Special Educ	LEP	At Risk	Migrant	Male	Female	All	District	Number Tested (All Students)
7	2012	100.0	46.3	56.4	52.2	0.0	38.8	39.1		45.7	60.8	53.2	59.2	391
	2013	66.7	54.5	46.2	48.7	5.3	36.8	34.6		43.6	54.6	49.0	57.1	580
	2014	*	49.5	45.7	48.2	17.9	33.9	37.3		40.4	53.6	47.2	54.6	727

NUMBER TESTED IN GRADE 7													
2012	7	160	211	356	20	98	243		197	194	391	9,456	
2013	9	187	368	542	19	247	367		296	284	580	9,785	
2014	5	220	499	624	28	292	553		356	371	727	10,339	

NUMBER UNSATISFACTORY (Level 1)

Grade	Year	White	African Amer	Hispanic	Econ Disadv	Special Educ	LEP	At Risk	Migrant	Male	Female	All	District	Number Tested (All Students)
4	2012	*	114	56	165	24	34	118		90	87	177	2,772	379
	2013	2	82	63	144	17	28	58		77	73	150	2,442	339
	2014	4	108	64	167	16	25	148		105	74	179	2,675	417

NUMBER TESTED IN GRADE 4													
2012	3	222	139	353	26	51	169		181	198	379	7,039	
2013	6	190	134	316	20	52	94		164	175	339	6,771	
2014	10	208	185	376	22	57	257		211	206	417	7,022	

NUMBER UNSATISFACTORY (Level 1)

Grade	Year	White	African Amer	Hispanic	Econ Disadv	Special Educ	LEP	At Risk	Migrant	Male	Female	All	District	Number Tested (All Students)
7	2012	0	86	92	170	20	60	148		107	76	183	3,859	391
	2013	3	85	198	278	18	156	240		167	129	296	4,198	580
	2014	*	111	271	323	23	193	347		212	172	384	4,690	727

NUMBER TESTED IN GRADE 7													
2012	7	160	211	356	20	98	243		197	194	391	9,456	
2013	9	187	368	542	19	247	367		296	284	580	9,785	
2014	5	220	499	624	28	292	553		356	371	727	10,339	

PERCENTAGE ADVANCED (Level 3)

Grade	Year	White	African Amer	Hispanic	Econ Disadv	Special Educ	LEP	At Risk	Migrant	Male	Female	All	District	Number Tested (All Students)
4	2012	*	3.2	5.0	3.7	0.0	2.0	1.8		3.9	3.5	3.7	5.1	379
	2013	0.0	3.2	2.2	2.8	0.0	1.9	1.1		3.0	2.3	2.7	4.7	339
	2014	0.0	2.4	2.7	1.9	0.0	1.8	0.4		0.9	3.9	2.4	3.7	417

NUMBER TESTED IN GRADE 4													
2012	3	222	139	353	26	51	169		181	198	379	7,039	
2013	6	190	134	316	20	52	94		164	175	339	6,771	
2014	10	208	185	376	22	57	257		211	206	417	7,022	

PERCENTAGE ADVANCED (Level 3)

Grade	Year	White	African Amer	Hispanic	Econ Disadv	Special Educ	LEP	At Risk	Migrant	Male	Female	All	District	Number Tested (All Students)
7	2012	14.3	0.6	0.0	0.6	0.0	0.0	0.0		0.5	1.0	0.8	3.4	391
	2013	0.0	1.1	0.5	0.7	0.0	0.0	0.0		0.3	1.1	0.7	1.5	580
	2014	*	0.0	0.8	0.8	0.0	0.0	0.0		0.6	0.8	0.7	3.0	727

NUMBER TESTED IN GRADE 7													
2012	7	160	211	356	20	98	243		197	194	391	9,456	
2013	9	187	368	542	19	247	367		296	284	580	9,785	
2014	5	220	499	624	28	292	553		356	371	727	10,339	

AVERAGE PERCENTAGE OF ITEMS CORRECT BY REPORTING CATEGORY

Grade	Year	REPORTING CATEGORY			
		1. Composition ¹ GR 4: Personal Narrative GR 7: Expository	1. Composition ¹ GR 4: Expository GR 7: Personal Narrative	2. Revision	3. Editing
4	2012	2.0	1.9	55.7	55.9
	2013	3.8	3.7	51.6	60.5
	2014	3.9	3.8	60.7	54.6
7	2012	1.7	2.1	60.1	57.4
	2013	3.8	4.3	59.6	56.6
	2014	3.6	4.1	58.9	52.9

¹Average score points (range 0-8). A STAAR composition is rated twice on a scale of 1 to 4, and the ratings are summed to determine score points for the composition. Score point scale: 0=Non-scorable; 2=Very Limited; 3=between Very Limited and Basic; 4=Basic; 5=between Basic and Satisfactory; 6=Satisfactory; 7=between Satisfactory and Accomplished; 8=Accomplished

PERCENTAGE SATISFACTORY (Levels 2 or 3)

Grade	Year	White	African Amer	Hispanic	Econ Disadv	Special Educ	LEP	At Risk	Migrant	Male	Female	All	District	Number Tested (All Students)
3	2012	33.3	42.9	64.3	55.9	18.5	61.4	51.5		55.3	57.4	56.4	55.4	614
	2013	66.7	37.6	68.4	56.9	58.8	73.0	53.5		53.5	61.3	57.3	57.5	628
	2014	62.5	48.3	69.6	62.7	50.0	71.9	58.7	*	64.6	61.3	63.1	59.3	746
4	2012	*	45.8	59.3	54.5	13.6	58.8	49.9		54.7	55.3	55.0	53.0	653
	2013	71.4	55.6	67.9	64.9	25.9	70.1	66.4		63.3	65.7	64.5	57.5	640
	2014	50.0	35.9	69.6	60.0	30.3	70.6	56.6		60.7	59.9	60.3	59.0	769
5	2012	*	44.2	71.7	61.3	17.4	72.3	57.7		60.8	62.6	61.7	64.1	611
	2013	57.1	76.5	83.1	80.8	57.7	83.7	77.8		79.7	82.0	80.8	81.7	666
	2014	90.0	71.4	88.1	83.9	84.4	88.5	81.2		84.0	83.2	83.6	81.4	719
3-5	2012	33.3	44.3	64.8	57.2	16.7	63.8	52.9		56.9	58.4	57.6	57.5	1,878
	2013	65.2	55.8	73.4	67.8	45.7	75.7	65.4		65.9	69.7	67.8	65.3	1,934
	2014	66.7	51.3	75.7	68.5	54.8	77.2	65.4	*	69.2	68.3	68.8	66.3	2,234

NUMBER TESTED IN GRADES 3-5													
2012	15	648	1,189	1,796	72	882	1,313			956	922	1,878	35,372
2013	23	613	1,265	1,841	70	944	1,313			980	954	1,934	34,686
2014	30	635	1,535	2,043	93	1,159	1,758	2		1,147	1,087	2,234	35,222

PERCENTAGE SATISFACTORY (Levels 2 or 3)

Grade	Year	White	African Amer	Hispanic	Econ Disadv	Special Educ	LEP	At Risk	Migrant	Male	Female	All	District	Number Tested (All Students)
6	2012	*	51.3	59.8	57.1	28.6	57.3	46.5		58.0	56.4	57.2	66.4	348
	2013	*	40.8	51.8	47.8	52.9	49.5	40.8		49.0	47.5	48.2	60.6	678
	2014	64.7	48.0	64.8	60.0	17.2	62.3	55.4		56.5	63.6	60.0	64.3	753
7	2012	85.7	35.5	52.2	46.0	15.4	36.0	33.2		48.1	44.4	46.2	59.9	372
	2013	62.5	34.6	54.5	48.7	11.1	49.6	40.7		48.3	48.0	48.1	59.9	567
	2014	*	39.9	49.6	46.4	17.9	42.8	37.1		46.0	47.4	46.7	55.1	715
8	2012	*	30.8	42.8	39.1	23.5	40.6	30.8		41.1	34.8	37.9	51.9	309
	2013	*	56.0	70.2	66.2	62.5	62.7	57.7		64.7	66.4	65.6	74.0	427
	2014	66.7	66.9	74.1	71.6	58.8	69.8	67.0		69.6	72.9	71.1	73.2	537
6-8	2012	69.2	39.3	51.9	47.8	23.0	46.6	36.8		49.4	45.5	47.4	60.3	1,029
	2013	73.3	43.1	57.1	52.8	41.2	51.9	45.3		52.6	52.7	52.6	63.7	1,672
	2014	60.7	50.6	61.6	58.3	27.0	57.5	52.1		56.6	60.0	58.3	63.3	2,005

NUMBER TESTED IN GRADES 6-8													
2012	13	445	539	919	61	279	1,062			512	517	1,029	26,044
2013	15	585	1,041	1,581	51	647	1,062			829	843	1,672	26,676
2014	28	625	1,323	1,779	74	845	1,565			1,018	987	2,005	27,304

NUMBER UNSATISFACTORY (Level 1)

Grade	Year	White	African Amer	Hispanic	Econ Disadv	Special Educ	LEP	At Risk	Migrant	Male	Female	All	District	Number Tested (All Students)
3	2012	6	121	138	259	22	110	233		138	130	268	5,287	614
	2013	3	141	121	258	7	71	227		148	120	268	5,086	628
	2014	3	119	150	255	14	100	236	*	145	130	275	4,988	746
4	2012	*	115	174	282	19	133	220		151	143	294	5,511	653
	2013	2	83	141	213	20	103	129		115	112	227	4,919	640
	2014	6	134	163	283	23	118	263		152	153	305	4,803	769
5	2012	*	125	106	228	19	76	181		123	111	234	4,228	611
	2013	3	47	75	122	11	55	98		71	57	128	2,035	666
	2014	1	56	60	105	5	46	109		56	62	118	2,088	719
3-5	2012	10	361	418	769	60	319	634		412	384	796	15,026	1,878
	2013	8	271	337	593	38	229	454		334	289	623	12,040	1,934
	2014	10	309	373	643	42	264	608	*	353	345	698	11,879	2,234

NUMBER TESTED IN GRADES 3-5													
2012	15	648	1,189	1,796	72	882	1,313			956	922	1,878	35,372
2013	23	613	1,265	1,841	70	944	1,313			980	954	1,934	34,686
2014	30	635	1,535	2,043	93	1,159	1,758	2		1,147	1,087	2,234	35,222

NUMBER UNSATISFACTORY (Level 1)

Grade	Year	White	African Amer	Hispanic	Econ Disadv	Special Educ	LEP	At Risk	Migrant	Male	Female	All	District	Number Tested (All Students)
6	2012	*	73	72	134	10	53	114		74	75	149	3,327	348
	2013	*	135	213	339	8	151	250		171	180	351	4,133	678
	2014	6	115	177	277	24	145	271		166	135	301	3,478	753
7	2012	1	98	96	184	11	55	151		96	104	200	3,705	372
	2013	3	125	161	272	16	116	211		150	144	294	3,851	567
	2014	*	134	244	331	23	159	341		189	192	381	4,536	715
8	2012	*	99	91	162	26	41	144		89	103	192	3,319	309
	2013	*	73	73	136	6	44	120		72	75	147	1,709	427
	2014	2	60	87	133	7	55	137		87	68	155	2,001	537
6-8	2012	4	270	259	480	47	149	409		259	282	541	10,351	1,029
	2013	4	333	447	747	30	311	581		393	399	792	9,693	1,672
	2014	11	309	508	741	54	359	749		442	395	837	10,015	2,005

NUMBER TESTED IN GRADES 6-8													
2012	13	445	539	919	61	279	1,062		512	517	1,029	26,044	
2013	15	585	1,041	1,581	51	647	1,062		829	843	1,672	26,676	
2014	28	625	1,323	1,779	74	845	1,565		1,018	987	2,005	27,304	

PERCENTAGE ADVANCED (Level 3)

Grade	Year	White	African Amer	Hispanic	Econ Disadv	Special Educ	LEP	At Risk	Migrant	Male	Female	All	District	Number Tested (All Students)
3	2012	0.0	2.8	11.9	8.5	0.0	12.3	7.7		8.7	8.5	8.6	7.9	614
	2013	0.0	1.8	13.3	9.0	5.9	15.2	8.4		8.8	9.0	8.9	9.1	628
	2014	0.0	4.3	14.2	11.4	0.0	14.9	9.6	*	11.7	10.7	11.3	10.4	746
4	2012	*	2.8	7.3	5.6	0.0	7.4	5.5		7.2	4.4	5.8	6.1	653
	2013	0.0	5.9	18.7	15.0	3.7	18.6	16.7		13.7	16.5	15.2	9.5	640
	2014	8.3	4.8	20.7	15.8	3.0	21.6	14.9		16.8	14.9	15.9	14.0	769
5	2012	*	2.2	16.0	10.5	4.3	15.3	9.8		10.5	11.1	10.8	10.4	611
	2013	0.0	6.5	12.6	10.5	0.0	11.6	9.5		9.2	12.3	10.7	12.8	666
	2014	0.0	7.7	22.1	17.6	0.0	22.2	16.0		15.1	20.6	17.9	15.7	719
3-5	2012	0.0	2.6	11.5	8.2	1.4	11.5	7.6		8.8	7.9	8.4	8.1	1,878
	2013	0.0	4.6	14.9	11.5	2.9	15.1	11.2		10.5	12.7	11.6	10.4	1,934
	2014	3.3	5.5	19.1	14.9	1.1	19.8	13.5	*	14.5	15.5	15.0	13.3	2,234

NUMBER TESTED IN GRADE 3-5													
2012	15	648	1,189	1,796	72	882	1,347		956	922	1,878	35,372	
2013	23	613	1,265	1,841	70	944	1,313		980	954	1,934	34,686	
2014	30	635	1,535	2,043	93	1,159	1,758	2	1,147	1,087	2,234	35,222	

PERCENTAGE ADVANCED (Level 3)

Grade	Year	White	African Amer	Hispanic	Econ Disadv	Special Educ	LEP	At Risk	Migrant	Male	Female	All	District	Number Tested (All Students)
6	2012	*	3.3	7.8	6.7	0.0	7.3	4.7		5.7	7.0	6.3	9.8	348
	2013	*	0.4	4.5	3.2	0.0	3.7	1.9		3.3	2.9	3.1	8.5	678
	2014	0.0	0.5	7.0	5.1	0.0	6.2	4.1		5.8	4.0	4.9	9.6	753
7	2012	0.0	0.0	1.5	0.6	0.0	1.2	0.4		2.2	0.5	1.3	6.3	372
	2013	0.0	0.0	2.8	2.1	0.0	2.6	1.7		1.7	2.2	1.9	4.8	567
	2014	*	1.3	2.9	2.8	0.0	1.1	0.7		2.6	2.5	2.5	6.7	715
8	2012	*	0.0	0.0	0.4	0.0	0.0	0.0		0.7	0.0	0.3	0.4	309
	2013	*	0.0	0.0	0.0	0.0	0.0	0.0		0.0	0.0	0.0	0.9	427
	2014	0.0	0.0	1.2	0.6	0.0	1.1	0.5		1.0	0.4	0.7	1.0	537
6-8	2012	7.7	1.1	3.2	2.6	0.0	3.6	1.7		2.9	2.5	2.7	6.1	1,029
	2013	0.0	0.2	2.9	2.0	0.0	2.6	1.3		1.9	1.9	1.9	5.3	1,672
	2014	3.6	0.6	4.0	3.1	0.0	3.4	2.0		3.3	2.5	2.9	6.2	2,005

NUMBER TESTED IN GRADE 6-8													
2012	13	445	539	919	61	279	647		512	517	1,029	26,044	
2013	15	585	1,041	1,581	51	647	1,062		829	843	1,672	26,676	
2014	28	625	1,323	1,779	74	845	1,565		1,018	987	2,005	27,304	

AVERAGE PERCENTAGE OF ITEMS CORRECT BY REPORTING CATEGORY

Grade	Year	REPORTING CATEGORY				
		1. Numbers, Operations, and Quantitative Reasoning	2. Patterns, Relationships, and Algebraic Reasoning	3. Geometry and Spatial Reasoning	4. Measurement	5. Probability and Statistics
3	2012	56.9	58.9	70.1	58.2	48.3
	2013	57.4	58.7	67.9	65.2	63.5
	2014	65.6	64.3	63.4	67.0	60.5
4	2012	62.6	57.9	63.8	52.0	55.8
	2013	67.4	66.7	72.7	62.1	53.9
	2014	64.6	68.5	70.6	58.7	62.9
5	2012	59.4	59.3	62.1	54.1	58.1
	2013	68.7	63.2	64.4	59.3	68.9
	2014	69.5	66.1	73.6	62.6	67.3
3-5	2012	59.7	58.7	65.3	54.7	54.1
	2013	64.6	62.9	68.3	62.2	62.2
	2014	66.5	66.3	69.2	62.7	63.5

AVERAGE PERCENTAGE OF ITEMS CORRECT BY REPORTING CATEGORY

Grade	Year	REPORTING CATEGORY				
		1. Numbers, Operations, and Quantitative Reasoning	2. Patterns, Relationships, and Algebraic Reasoning	3. Geometry and Spatial Reasoning	4. Measurement	5. Probability and Statistics
6	2012	44.6	51.7	49.2	43.1	49.3
	2013	46.7	48.3	44.1	37.7	43.1
	2014	52.0	48.9	48.5	46.6	50.5
7	2012	45.2	44.6	46.5	34.7	42.4
	2013	42.5	47.6	51.9	37.0	38.4
	2014	52.0	45.0	43.6	36.6	46.5
8	2012	44.3	35.3	27.4	31.9	39.9
	2013	45.7	47.2	43.6	41.3	40.1
	2014	46.9	47.1	47.3	41.6	50.4
6-8	2012	44.7	44.2	41.7	36.7	44.0
	2013	45.0	47.8	46.6	38.4	40.7
	2014	50.7	47.0	46.5	41.7	49.1

PERCENTAGE SATISFACTORY (Levels 2 or 3)

Test	Year	White	African Amer	Hispanic	Econ Disadv	Special Educ	LEP	At Risk	Migrant	Male	Female	All	District
ALGEBRA I	2012	80.6	65.9	70.7	70.1	28.6	60.0	56.3		67.3	72.6	70.0	74.7
	2013	60.0	59.6	69.7	65.8	27.5	55.1	54.5		66.9	66.5	66.7	72.5
	2014	100.0	66.0	76.5	74.4	38.5	65.1	63.6		72.3	75.9	74.1	78.0
Tests Taken	2012	31	220	474	603	28	140	499		367	369	736	8,795
	2013	10	282	624	783	40	187	499		426	501	927	9,251
	2014	6	250	625	750	39	175	550		441	460	901	9,524

NUMBER UNSATISFACTORY (Level 1)

Test	Year	White	African Amer	Hispanic	Econ Disadv	Special Educ	LEP	At Risk	Migrant	Male	Female	All	District
ALGEBRA I	2012	6	75	139	180	20	56	165		120	101	221	2,226
	2013	4	114	189	268	29	84	227		141	168	309	2,540
	2014	0	85	147	192	24	61	200		122	111	233	2,099
Tests Taken	2012	31	220	474	603	28	140	499		367	369	736	8,795
	2013	10	282	624	783	40	187	499		426	501	927	9,251
	2014	6	250	625	750	39	175	550		441	460	901	9,524

PERCENTAGE ADVANCED (Level 3)

Test	Year	White	African Amer	Hispanic	Econ Disadv	Special Educ	LEP	At Risk	Migrant	Male	Female	All	District
ALGEBRA I	2012	0.0	1.4	1.7	1.8	0.0	0.7	0.5		3.0	0.5	1.8	7.0
	2013	10.0	0.4	1.9	1.7	0.0	2.7	1.4		2.1	1.6	1.8	8.6
	2014	0.0	0.8	5.3	4.3	2.6	1.7	0.9		4.8	3.3	4.0	9.9
Tests Taken	2012	31	220	474	603	28	140	378		367	369	736	8,795
	2013	10	282	624	783	40	187	499		426	501	927	9,251
	2014	6	250	625	750	39	175	550		441	460	901	9,524

AVERAGE PERCENTAGE OF ITEMS CORRECT BY REPORTING CATEGORY

ALGEBRA I	1. Functional Relationships	2. Properties and Attributes of Functions	3. Linear Functions	4. Linear Equations and Inequalities	5. Quadratic and Other Nonlinear Functions
2012	48.4	42.8	44.0	40.8	45.4
2013	46.7	39.0	43.6	48.7	44.3
2014	45.3	44.3	51.2	49.7	46.7

PERCENTAGE SATISFACTORY (Levels 2 or 3)

Grade	Year	White	African Amer	Hispanic	Econ Disadv	Special Educ	LEP	At Risk	Migrant	Male	Female	All	District	Number Tested (All Students)
5	2012	*	43.6	57.6	51.6	36.8	54.5	43.3		54.0	50.5	52.3	58.2	572
	2013	57.1	52.7	57.6	55.4	53.8	58.0	51.3		61.8	49.4	56.0	65.1	525
	2014	60.0	50.8	62.9	59.0	34.8	60.4	50.3		56.8	59.7	58.3	61.3	523

NUMBER TESTED IN GRADE 5													
2012	2	225	335	552	19	231	383		289	283	572	10,697	
2013	7	203	297	500	26	200	300		280	245	525	10,180	
2014	10	191	315	463	23	207	386		250	273	523	9,073	

PERCENTAGE SATISFACTORY (Levels 2 or 3)

Grade	Year	White	African Amer	Hispanic	Econ Disadv	Special Educ	LEP	At Risk	Migrant	Male	Female	All	District	Number Tested (All Students)
8	2012	*	39.9	46.2	44.8	11.4	24.0	24.7		48.6	41.5	44.7	54.0	380
	2013	87.5	49.3	64.2	59.5	30.0	55.9	48.6		65.8	54.2	59.6	65.8	564
	2014	*	56.3	61.1	60.9	31.3	44.9	49.5		62.5	56.8	59.8	61.9	574

NUMBER TESTED IN GRADE 8													
2012	3	168	199	324	35	75	223		175	205	380	9,431	
2013	8	201	341	531	20	143	319		263	301	564	8,998	
2014	5	190	365	483	16	176	406		301	273	574	9,466	

NUMBER UNSATISFACTORY (Level 1)

Grade	Year	White	African Amer	Hispanic	Econ Disadv	Special Educ	LEP	At Risk	Migrant	Male	Female	All	District	Number Tested (All Students)
5	2012	*	127	142	267	12	105	217		133	140	273	4476	572
	2013	3	96	126	223	12	84	146		107	124	231	3551	525
	2014	4	94	117	190	15	82	192		108	110	218	3511	523

NUMBER TESTED IN GRADE 5													
2012	2	225	335	552	19	231	383		289	283	572	10,697	
2013	7	203	297	500	26	200	300		280	245	525	10,180	
2014	10	191	315	463	23	207	386		250	273	523	9,073	

NUMBER UNSATISFACTORY (Level 1)

Grade	Year	White	African Amer	Hispanic	Econ Disadv	Special Educ	LEP	At Risk	Migrant	Male	Female	All	District	Number Tested (All Students)
8	2012	*	101	107	179	31	57	168		90	120	210	4335	380
	2013	1	102	122	215	14	63	164		90	138	228	3074	564
	2014	*	83	142	189	11	97	205		113	118	231	3605	574

NUMBER TESTED IN GRADE 8													
2012	3	168	199	324	35	75	223		175	205	380	9,431	
2013	8	201	341	531	20	143	319		263	301	564	8,998	
2014	5	190	365	483	16	176	406		301	273	574	9,466	

PERCENTAGE ADVANCED (Level 3)

Grade	Year	White	African Amer	Hispanic	Econ Disadv	Special Educ	LEP	At Risk	Migrant	Male	Female	All	District	Number Tested (All Students)
5	2012	*	1.8	6.0	4.7	0.0	3.0	2.1		4.2	5.3	4.7	6.5	572
	2013	14.3	2.0	3.0	2.8	3.8	1.5	1.7		3.2	2.0	2.7	6.6	525
	2014	0.0	1.6	5.1	3.9	0.0	3.9	2.1		5.6	2.2	3.8	5.3	523

NUMBER TESTED IN GRADE 5													
2012	2	225	335	552	19	231	383		289	283	572	10,697	
2013	7	203	297	500	26	200	300		280	245	525	10,180	
2014	10	191	315	463	23	207	386		250	273	523	9,073	

PERCENTAGE ADVANCED (Level 3)

Grade	Year	White	African Amer	Hispanic	Econ Disadv	Special Educ	LEP	At Risk	Migrant	Male	Female	All	District	Number Tested (All Students)
8	2012	*	0.6	3.0	1.9	0.0	0.0	0.0		2.3	2.0	2.1	4.2	380
	2013	12.5	1.0	3.2	3.0	0.0	1.4	0.9		2.7	3.3	3.0	7.1	564
	2014	*	5.3	8.5	8.3	0.0	3.4	2.5		8.3	7.7	8.0	11.3	574

NUMBER TESTED IN GRADE 8													
2012	3	168	199	324	35	75	223		175	205	380	9,431	
2013	8	201	341	531	20	143	319		263	301	564	8,998	
2014	5	190	365	483	16	176	406		301	273	574	9,466	

AVERAGE PERCENTAGE OF ITEMS CORRECT BY REPORTING CATEGORY

Grade	Year	REPORTING CATEGORY			
		1. Matter and Energy	2. Force, Motion, and Energy	3. Earth and Space	4. Organisms and Environments
5	2012	69.7	71.7	65.5	59.2
	2013	63.9	65.2	58.5	57.5
	2014	65.0	63.3	57.7	61.7
8	2012	50.3	51.1	53.0	51.6
	2013	59.8	53.1	53.7	54.6
	2014	60.1	55.6	53.4	65.5

PERCENTAGE SATISFACTORY (Levels 2 and 3)

Test	Year	White	African Amer	Hispanic	Econ Disadv	Special Educ	LEP	At Risk	Migrant	Male	Female	All	District
BIOLOGY	2012	93.0	84.5	86.7	86.3	46.9	69.2	74.0		86.7	86.3	86.5	82.9
	2013	90.0	79.0	88.1	85.3	51.3	73.8	75.2		86.4	85.3	85.8	84.4
	2014	100.0	86.0	92.2	90.9	68.4	80.2	84.1		88.8	92.7	90.8	89.8
Tests Taken	2012	43	264	709	847	32	156	427		527	502	1,029	8,881
	2013	10	329	841	1,002	39	195	529		567	634	1,201	9,374
	2014	10	308	860	1,002	38	207	635		590	613	1,203	9,672

NUMBER UNSATISFACTORY (Level 1)

Test	Year	White	African Amer	Hispanic	Econ Disadv	Special Educ	LEP	At Risk	Migrant	Male	Female	All	District
BIOLOGY	2012	3	41	94	116	17	48	111		70	69	139	1,522
	2013	1	69	100	147	19	51	131		77	93	170	1,467
	2014	0	43	67	91	12	41	101		66	45	111	987
Tests Taken	2012	43	264	709	847	32	156	427		527	502	1,029	8,881
	2013	10	329	841	1,002	39	195	529		567	634	1,201	9,374
	2014	10	308	860	1,002	38	207	635		590	613	1,203	9,672

PERCENTAGE ADVANCED (Level 3)

Test	Year	White	African Amer	Hispanic	Econ Disadv	Special Educ	LEP	At Risk	Migrant	Male	Female	All	District
BIOLOGY	2012	2.3	4.2	4.4	4.5	0.0	0.0	0.7		4.0	4.6	4.3	4.8
	2013	0.0	4.6	5.4	5.2	2.6	1.0	1.7		5.3	5.2	5.2	7.5
	2014	20.0	1.0	5.2	4.5	2.6	2.4	1.7		5.3	3.6	4.4	7.5
Tests Taken	2012	43	264	709	847	32	156	427		527	502	1,029	8,881
	2013	10	329	841	1,002	39	195	529		567	634	1,201	9,374
	2014	10	308	860	1,002	38	207	635		590	613	1,203	9,672

AVERAGE PERCENTAGE OF ITEMS CORRECT BY REPORTING CATEGORY

BIOLOGY	1. Cell Structure and Function	2. Mechanisms of Genetics	3. Biological Evolution and Classification	4. Biological Processes and Systems	5. Interdependence within Environmental Systems
2012	50.2	52.4	57.4	45.9	57.9
2013	50.5	51.3	60.8	52.1	58.6
2014	47.6	56.1	63.1	61.8	53.2

PERCENTAGE SATISFACTORY (Levels 2 or 3)

Grade	Year	White	African Amer	Hispanic	Econ Disadv	Special Educ	LEP	At Risk	Migrant	Male	Female	All	District	Number Tested (All Students)
8	2012	*	41.6	42.4	44.4	27.3	20.5	26.7		46.8	40.3	43.2	52.5	377
	2013	62.5	47.8	59.4	55.6	35.0	48.3	43.9		60.1	51.7	55.6	59.3	565
	2014	*	56.8	62.1	61.7	31.3	43.7	49.8		63.2	57.2	60.4	53.5	573

NUMBER TESTED IN GRADE 8													
2012	3	166	198	322	33	73	221		171	206	377	9,392	
2013	8	201	342	532	20	143	319		263	302	565	8,991	
2014	5	190	364	481	16	174	406		302	271	573	9,464	

NUMBER UNSATISFACTORY (Level 1)

Grade	Year	White	African Amer	Hispanic	Econ Disadv	Special Educ	LEP	At Risk	Migrant	Male	Female	All	District	Number Tested (All Students)
8	2012	*	97	114	179	24	58	162		91	123	214	4462	377
	2013	3	105	139	236	13	74	179		105	146	251	3656	565
	2014	*	82	138	184	11	98	204		111	116	227	4402	573

NUMBER TESTED IN GRADE8													
2012	3	166	198	322	33	73	221		171	206	377	9,392	
2013	8	201	342	532	20	143	319		263	302	565	8,991	
2014	5	190	364	481	16	174	406		302	271	573	9,464	

PERCENTAGE ADVANCED (Level 3)

Grade	Year	White	African Amer	Hispanic	Econ Disadv	Special Educ	LEP	At Risk	Migrant	Male	Female	All	District	Number Tested (All Students)
8	2012	*	0.6	5.1	3.1	0.0	4.1	1.8		3.5	2.4	2.9	7.1	377
	2013	12.5	2.5	4.7	4.3	5.0	1.4	1.3		5.7	2.6	4.1	8.8	565
	2014	*	2.6	7.7	7.1	0.0	1.7	1.5		8.3	4.4	6.5	7.3	573

NUMBER TESTED IN GRADE 8													
2012	3	166	198	322	33	73	221		171	206	377	9,392	
2013	8	201	342	532	20	143	319		263	302	565	8,991	
2014	5	190	364	481	16	174	406		302	271	573	9,464	

AVERAGE PERCENTAGE OF ITEMS CORRECT BY REPORTING CATEGORY

Grade	Year	REPORTING CATEGORY			
		1. History	2. Geography and Culture	3. Government and Citizenship	4. Economics, Science, Technology, and Society
8	2012	45.5	49.6	47.3	45.2
	2013	55.5	58.0	43.6	47.4
	2014	56.4	46.2	52.9	59.2

PERCENTAGE SATISFACTORY (Levels 2 or 3)

Test	Year	White	African Amer	Hispanic	Econ Disadv	Special Educ	LEP	At Risk	Migrant	Male	Female	All	District
U.S. HISTORY	2012												*
	2013	*	*	100.0	96.2		*	100.0		*	96.0	96.3	90.2
	2014	100.0	96.0	95.4	95.6	76.2	84.0	93.5		96.2	95.1	95.6	92.0
Tests Taken	2012												4
	2013	1	4	22	26		3	7		2	25	27	51
	2014	22	247	717	791	21	125	635		498	509	1,007	7,801

NUMBER UNSATISFACTORY (Level 1)

Test	Year	White	African Amer	Hispanic	Econ Disadv	Special Educ	LEP	At Risk	Migrant	Male	Female	All	District
U.S. HISTORY	2012												*
	2013	*	*	0	1		*	0		*	1	1	5
	2014	0	10	33	35	5	20	41		19	25	44	625
Tests Taken	2012												4
	2013	1	4	22	26		3	7		2	25	27	51
	2014	22	247	717	791	21	125	635		498	509	1,007	7,801

PERCENTAGE ADVANCED (Level 3)

Test	Year	White	African Amer	Hispanic	Econ Disadv	Special Educ	LEP	At Risk	Migrant	Male	Female	All	District
U.S. HISTORY	2012												*
	2013	*	*	0.0	0.0		*	0.0		*	0.0	0.0	2.0
	2014	9.1	5.3	9.8	9.1	0.0	3.2	3.9		11.0	6.3	8.6	10.3
Tests Taken	2012												4
	2013	1	4	22	26		3	7		2	25	27	51
	2014	22	247	717	791	21	125	635		498	509	1,007	7,801

AVERAGE PERCENTAGE OF ITEMS CORRECT BY REPORTING CATEGORY

U.S. HISTORY	1. History	2. Geography and Culture	3. Government and Citizenship	4. Economics, Science, Technology, and Society
2012				
2013	52.5	66.4	73.7	60.4
2014	58.8	68.1	65.3	69.9

PERCENTAGE SATISFACTORY (Levels 2 or 3)

Grade	Year	White	African Amer	Hispanic	Econ Disadv	Special Educ	LEP	At Risk	Migrant	Male	Female	All	District	Number Tested (All Students)
3	2012	*		67.0	66.6	36.4	66.3	66.7		59.4	74.0	66.9	65.5	293
	2013	*		69.5	69.0	16.7	68.7	69.3		63.6	74.7	69.0	69.6	300
	2014			70.0	69.9	38.1	70.1	70.2	*	64.8	77.2	70.0	65.2	377
4	2012			61.5	61.8	*	60.9	61.2		59.2	64.4	61.5	64.4	304
	2013	*		65.4	65.9	16.7	64.7	64.9		55.2	75.0	65.3	61.0	314
	2014	*		68.2	68.0	22.2	68.4	68.6		64.6	72.3	68.4	60.8	354
5	2012			75.4	75.5	*	74.6	74.2		70.6	80.9	75.4	72.1	191
	2013			86.4	87.3		86.2	86.3	*	86.5	86.3	86.4	86.5	258
	2014	*		86.7	86.6	76.5	87.0	87.0		85.2	88.5	86.9	83.0	327
3-5	2012	*		66.9	66.9	26.7	66.2	66.4		62.1	72.2	66.9	66.8	788
	2013	*		73.0	73.3	16.7	72.4	72.7	*	67.9	78.0	72.8	70.6	872
	2014	*		74.5	74.4	48.9	74.7	74.8	*	70.6	79.2	74.7	68.7	1,058

NUMBER TESTED IN GRADES 3-5													
2012	1		786	768	15	760	764		414	374	788	14,102	
2013	3		868	846	18	843	843	1	449	423	872	13,810	
2014	4		1,053	992	47	1,045	1,045	1	562	496	1,058	14,654	

NUMBER UNSATISFACTORY (Level 1)

Grade	Year	White	African Amer	Hispanic	Econ Disadv	Special Educ	LEP	At Risk	Migrant	Male	Female	All	District	Number Tested (All Students)
3	2012	*		96	96	7	96	96		58	39	97	1,957	293
	2013	*		91	90	5	91	89		56	37	93	1,697	300
	2014			113	107	13	111	111	*	77	36	113	2,005	377
4	2012			117	112	*	115	114		69	48	117	1,728	304
	2013	*		108	104	10	108	107		69	40	109	1,915	314
	2014	*		112	106	7	111	110		64	48	112	1,891	354
5	2012			47	46	*	46	47		30	17	47	998	191
	2013			35	32		34	34	*	19	16	35	449	258
	2014	*		43	41	4	42	42		24	19	43	692	327
3-5	2012	*		260	254	11	257	257		157	104	261	4,683	788
	2013	*		234	226	15	233	230	*	144	93	237	4,061	872
	2014	*		268	254	24	264	263	*	165	103	268	4,588	1,058

NUMBER TESTED IN GRADES 3-5													
2012	1		786	768	15	760	764		414	374	788	14,102	
2013	3		868	846	18	843	843	1	449	423	872	13,810	
2014	4		1,053	992	47	1,045	1,045	1	562	496	1,058	14,654	

PERCENTAGE ADVANCED (Level 3)

Grade	Year	White	African Amer	Hispanic	Econ Disadv	Special Educ	LEP	At Risk	Migrant	Male	Female	All	District	Number Tested (All Students)
3	2012	*		16.2	16.0	0.0	15.1	15.6		14.0	18.7	16.4	13.4	293
	2013	*		13.8	13.8	0.0	13.7	13.8		12.3	15.1	13.7	17.4	300
	2014			20.4	20.3	0.0	20.5	20.4	*	20.5	20.3	20.4	17.6	377
4	2012			15.1	15.0	*	15.3	15.3		13.0	17.8	15.1	13.0	304
	2013	*		19.2	19.3	8.3	18.6	18.7		16.2	22.5	19.4	13.4	314
	2014	*		16.2	16.0	0.0	16.2	16.3		15.5	16.8	16.1	12.5	354
5	2012			15.7	16.0	*	15.5	15.4		8.8	23.6	15.7	12.1	191
	2013			17.1	16.7		16.7	16.5	*	16.3	17.9	17.1	11.6	258
	2014	*		14.8	13.7	0.0	14.9	14.9		11.1	18.8	15.0	15.8	327
3-5	2012	*		15.6	15.6	0.0	15.3	15.4		12.3	19.5	15.7	12.9	788
	2013	*		16.7	16.7	5.6	16.4	16.4	*	14.9	18.7	16.7	14.6	872
	2014	*		17.3	16.8	0.0	17.3	17.3	*	16.2	18.5	17.3	15.4	1,058

NUMBER TESTED IN GRADE 3-5													
2012	1		786	768	15	760	764		414	374	788	14,102	
2013	3		868	846	18	843	843	1	449	423	872	13,810	
2014	4		1,053	992	47	1,045	1,045	1	562	496	1,058	14,654	

AVERAGE PERCENTAGE OF ITEMS CORRECT BY REPORTING CATEGORY

Grade	Year	REPORTING CATEGORY		
		1. Understanding Across Genres	2. Understanding/Analysis of Literary Texts	3. Understanding/Analysis of Informational Texts
3	2012	65.6	60.0	50.4
	2013	57.6	59.5	59.5
	2014	66.4	59.3	61.1
4	2012	54.8	62.6	58.5
	2013	61.7	64.0	57.4
	2014	64.6	61.6	65.7
5	2012	61.7	66.8	63.5
	2013	60.8	63.3	69.3
	2014	60.5	68.1	68.1
3-5	2012	60.5	62.7	56.7
	2013	60.0	62.2	61.6
	2014	64.0	62.8	64.8

PERCENTAGE SATISFACTORY (Levels 2 or 3)

Grade	Year	White	African Amer	Hispanic	Econ Disadv	Special Educ	LEP	At Risk	Migrant	Male	Female	All	District	Number Tested (All Students)
4	2012	*		70.3	69.9	*	70.1	70.4		63.4	78.5	70.0	68.9	307
	2013	*		71.8	72.2	33.3	71.2	71.5		60.8	82.0	71.7	62.2	314
	2014	*		72.5	72.0	33.3	72.3	72.5		64.6	80.5	72.4	65.6	355

NUMBER TESTED IN GRADE 4													
2012	1		306	296	3	298	297		172	135	307	4,905	
2013	2		312	306	12	306	305		153	161	314	4,958	
2014	2		353	332	9	354	353		181	174	355	4,841	

NUMBER UNSATISFACTORY (Level 1)

Grade	Year	White	African Amer	Hispanic	Econ Disadv	Special Educ	LEP	At Risk	Migrant	Male	Female	All	District	Number Tested (All Students)
4	2012	*		91	89	*	89	88		63	29	92	1,524	307
	2013	*		88	85	8	88	87		60	29	89	1,876	314
	2014	*		97	93	6	98	97		64	34	98	1,667	355

NUMBER TESTED IN GRADE 4													
2012	1		306	296	3	298	297		172	135	307	4,905	
2013	2		312	306	12	306	305		153	161	314	4,958	
2014	2		353	332	9	354	353		181	174	355	4,841	

PERCENTAGE ADVANCED (Level 3)

Grade	Year	White	African Amer	Hispanic	Econ Disadv	Special Educ	LEP	At Risk	Migrant	Male	Female	All	District	Number Tested (All Students)
4	2012	*		5.6	5.4	*	5.4	5.4		3.5	8.1	5.5	5.5	307
	2013	*		8.0	7.8	0.0	7.8	7.9		3.9	11.8	8.0	3.6	314
	2014	*		8.2	8.4	0.0	8.2	8.2		5.5	10.9	8.2	5.9	355

NUMBER TESTED IN GRADE 4													
2012	1		306	296	3	298	297		172	135	307	4,905	
2013	2		312	306	12	306	305		153	161	314	4,958	
2014	2		353	332	9	354	353		181	174	355	4,841	

AVERAGE PERCENTAGE OF ITEMS CORRECT BY REPORTING CATEGORY

Grade	Year	REPORTING CATEGORY			
		1. Composition ¹ Personal Narrative	1. Composition ¹ Expository	2. Revision	3. Editing
4	2012	2.1	1.9	59.8	66.1
	2013	4.5	4.6	63.0	70.4
	2014	4.6	4.3	67.1	68.3

¹Average score points (range 0-8). A STAAR composition is rated twice on a scale of 1 to 4, and the ratings are summed to determine score points for the composition. Score point scale: 0=Non-scorable; 2=Very Limited; 3=between Very Limited and Basic; 4=Basic; 5=between Basic and Satisfactory; 6=Satisfactory; 7=between Satisfactory and Accomplished; 8=Accomplished

PERCENTAGE SATISFACTORY (Levels 2 or 3)

Grade	Year	White	African Amer	Hispanic	Econ Disadv	Special Educ	LEP	At Risk	Migrant	Male	Female	All	District	Number Tested (All Students)
3	2012			*	*		*	*		*		*	36.6	1
	2013			*	*		*	*		*	*	*	20.5	3
	2014			71.4	66.7		71.4	71.4		*	*	71.4	23.0	7
4	2012			50.0	57.1	*	*	*		66.7	*	50.0	28.4	8
	2013			*	*		*	*		*		*	27.3	1
	2014			*	*		*	*		*	*	*	22.8	5
5	2012			*	*		*	*		*	*	*	24.1	5
	2013			*	*		*	*	*	*	*	*	41.5	5
	2014			*	*		*	*		*	*	66.7	38.8	6
3-5	2012			35.7	38.5	*	25.0	33.3		45.5	*	35.7	31.7	14
	2013			33.3	33.3		37.5	28.6	*	28.6	*	33.3	30.9	9
	2014			58.8	50.0		58.8	58.8		50.0	62.5	55.6	29.2	18

NUMBER TESTED IN GRADES 3-5													
2012			14	13	1	8	9			11	3	14	259
2013			9	9		8	7	1		7	2	9	233
2014			17	12		17	17			10	8	18	295

NUMBER UNSATISFACTORY (Level 1)

Grade	Year	White	African Amer	Hispanic	Econ Disadv	Special Educ	LEP	At Risk	Migrant	Male	Female	All	District	Number Tested (All Students)
3	2012			*	*		*	*		*		*	83	1
	2013			*	*		*	*		*	*	*	58	3
	2014			2	2		2	2		*	*	2	77	7
4	2012			4	3	*	*	*		2	*	4	53	8
	2013			*	*		*	*		*		*	48	1
	2014			*	*		*	*		*	*	*	61	5
5	2012			*	*		*	*		*	*	*	41	5
	2013			*	*		*	*	*	*	*	*	55	5
	2014			*	*		*	*		*	*	2	71	6
3-5	2012			9	8	*	6	6		6	*	9	177	14
	2013			6	6		5	5	*	5	*	6	161	9
	2014			7	6		7	7		5	3	8	209	18

NUMBER TESTED IN GRADES 3-5													
2012			14	13	1	8	9		11	3	14	259	
2013			9	9		8	7	1	7	2	9	233	
2014			17	12		17	17		10	8	18	295	

PERCENTAGE ADVANCED (Level 3)

Grade	Year	White	African Amer	Hispanic	Econ Disadv	Special Educ	LEP	At Risk	Migrant	Male	Female	All	District	Number Tested (All Students)
3	2012			*	*		*	*		*		*	0.8	1
	2013			*	*		*	*		*	*	*	1.4	3
	2014			0.0	0.0		0.0	0.0		*	*	0.0	0.0	7
4	2012			0.0	0.0	*	*	*		0.0	*	0.0	2.7	8
	2013			*	*		*	*		*		*	3.0	1
	2014			*	*		*	*		*	*	*	1.3	5
5	2012			*	*		*	*		*	*	*	1.9	5
	2013			*	*		*	*	*	*	*	*	1.1	5
	2014			*	*		*	*		*	*	0.0	0.9	6
3-5	2012			0.0	0.0	*	0.0	0.0		0.0	*	0.0	1.5	14
	2013			0.0	0.0		0.0	0.0	*	0.0	*	0.0	1.7	9
	2014			0.0	0.0		0.0	0.0		0.0	0.0	0.0	0.7	18

NUMBER TESTED IN GRADE 3-5													
2012			14	13	1	8	9			11	3	14	259
2013			9	9		8	7	1		7	2	9	233
2014			17	12		17	17			10	8	18	295

AVERAGE PERCENTAGE OF ITEMS CORRECT BY REPORTING CATEGORY

Grade	Year	REPORTING CATEGORY				
		1. Numbers, Operations, and Quantitative Reasoning	2. Patterns, Relationships, and Algebraic Reasoning	3. Geometry and Spatial Reasoning	4. Measurement	5. Probability and Statistics
3	2012	*	*	*	*	*
	2013	*	*	*	*	*
	2014	66.7	78.6	71.4	60.7	50.0
4	2012	47.8	45.8	54.2	48.4	37.5
	2013	*	*	*	*	*
	2014	*	*	*	*	*
5	2012	*	*	*	*	*
	2013	*	*	*	*	*
	2014	55.6	55.6	59.5	60.4	42.4
3-5	2012	40.6	46.4	47.6	43.8	35.1
	2013	47.4	40.7	47.7	38.9	43.7
	2014	57.5	65.7	64.3	56.3	48.0

PERCENTAGE SATISFACTORY (Levels 2 or 3)

Grade	Year	White	African Amer	Hispanic	Econ Disadv	Special Educ	LEP	At Risk	Migrant	Male	Female	All	District	Number Tested (All Students)
5	2012			47.9	47.9	*	48.9	48.9		41.9	58.8	47.9	45.4	48
	2013			56.9	57.8		55.2	56.6		56.3	57.5	56.9	43.0	153
	2014	*		58.8	59.8	20.0	58.6	58.9		60.6	56.7	58.7	55.6	213

NUMBER TESTED IN GRADE 5													
2012			48	48	5	47	47		31	17	48	1,164	
2013			153	147		145	143		80	73	153	1,122	
2014	2		211	199	15	210	209		109	104	213	2,304	

NUMBER UNSATISFACTORY (Level 1)

Grade	Year	White	African Amer	Hispanic	Econ Disadv	Special Educ	LEP	At Risk	Migrant	Male	Female	All	District	Number Tested (All Students)
5	2012			25	25	*	24	24		18	7	25	636	48
	2013			66	62		65	62		35	31	66	640	153
	2014	*		87	80	12	87	86		43	45	88	1022	213

NUMBER TESTED IN GRADE 5													
2012			48	48	5	47	47		31	17	48	1,164	
2013			153	147		145	143		80	73	153	1,122	
2014	2		211	199	15	210	209		109	104	213	2,304	

PERCENTAGE ADVANCED (Level 3)

Grade	Year	White	African Amer	Hispanic	Econ Disadv	Special Educ	LEP	At Risk	Migrant	Male	Female	All	District	Number Tested (All Students)
5	2012			8.3	8.3	*	8.5	8.5		6.5	11.8	8.3	2.2	48
	2013			3.9	4.1		4.1	4.2		5.0	2.7	3.9	1.9	153
	2014	*		2.8	2.5	0.0	2.4	2.4		2.8	2.9	2.8	2.9	213

NUMBER TESTED IN GRADE 5													
2012			48	48	5	47	47		31	17	48	1,164	
2013			153	147		145	143		80	73	153	1,122	
2014	2		211	199	15	210	209		109	104	213	2,304	

AVERAGE PERCENTAGE OF ITEMS CORRECT BY REPORTING CATEGORY

Grade	Year	REPORTING CATEGORY			
		1. Matter and Energy	2. Force, Motion, and Energy	3. Earth and Space	4. Organisms and Environments
5	2012	70.8	72.1	60.4	61.5
	2013	59.7	69.3	55.8	60.4
	2014	64.7	63.7	57.4	63.6

PERCENTAGE SATISFACTORY (Levels 2 or 3)

Grade	Year	White	African Amer	Hispanic	Econ Disadv	Special Educ	LEP	At Risk	Migrant	Male	Female	All	District	Number Tested (All Students)
3	2012	*	23.1	71.4	53.5		55.6	56.8		43.8	62.1	55.6	51.7	45
	2013	*	*	43.8	37.7	*	37.2	37.3		27.9	48.6	37.2	32.5	78
	2014		0.0	49.0	40.0	*	42.1	42.1		43.8	40.0	42.1	35.8	57
4	2012		11.1	16.7	22.2		20.0	21.1		22.2	18.2	20.0	23.7	20
	2013	*	*	*	18.2		18.2	20.0		*	28.6	18.2	32.7	11
	2014		*	*	33.3		28.6	33.3		*	*	28.6	25.4	7
5	2012		*	*	0.0		0.0	0.0		*	*	0.0	0.0	6
	2013			37.5	37.5		33.3	33.3		*	*	33.3	23.3	9
	2014		*	55.6	70.0		63.6	70.0		*	62.5	63.6	39.7	11
3-5	2012	*	15.4	58.3	40.3		40.8	42.0		33.3	45.5	40.8	39.6	71
	2013	*	25.0	41.6	35.4	*	34.7	35.1		27.5	42.6	34.7	31.0	98
	2014		20.0	48.4	43.7	*	44.0	45.2		42.5	45.7	44.0	34.8	75

NUMBER TESTED IN GRADES 3-5													
2012	1	26	36	67		71	69		27	44	71	682	
2013	2	8	77	96	3	98	94		51	47	98	523	
2014		10	62	71	2	75	73		40	35	75	454	

PERCENTAGE SATISFACTORY (Levels 2 or 3)

Grade	Year	White	African Amer	Hispanic	Econ Disadv	Special Educ	LEP	At Risk	Migrant	Male	Female	All	District	Number Tested (All Students)
6	2012		*	*	0.0		0.0	*		*	*	0.0	22.8	6
	2013		*	28.6	28.6		26.7	36.4		28.6	25.0	26.7	30.6	15
	2014			10.0	0.0		9.1	9.1		*	12.5	9.1	29.0	11
7	2012		*	*	0.0		0.0	*		*	*	0.0	16.9	7
	2013		*	13.3	11.1		11.1	13.3		18.2	0.0	11.1	24.3	18
	2014			41.7	33.3		41.7	33.3		71.4	*	41.7	24.8	12
8	2012		*	*	0.0		0.0	*		0.0	*	0.0	0.0	8
	2013			10.0	11.1		9.1	12.5		*	12.5	9.1	25.5	11
	2014			25.0	30.0		25.0	27.3		25.0	*	25.0	33.2	12
6-8	2012		0.0	0.0	0.0		0.0	0.0		0.0	0.0	0.0	12.7	21
	2013		*	17.9	17.1		15.9	20.6		19.0	13.0	15.9	26.8	44
	2014			26.5	20.7		25.7	22.6		38.9	11.8	25.7	29.1	35

NUMBER TESTED IN GRADES 6-8													
2012		8	10	19		21	15		13	8	21	620	
2013		2	39	41		44	34		21	23	44	634	
2014			34	29		35	31		18	17	35	722	

NUMBER UNSATISFACTORY (Level 1)

Grade	Year	White	African Amer	Hispanic	Econ Disadv	Special Educ	LEP	At Risk	Migrant	Male	Female	All	District	Number Tested (All Students)
3	2012	*	10	8	20		20	19		9	11	20	221	45
	2013	*	*	36	48	*	49	47		31	18	49	224	78
	2014		7	25	33	*	33	33		18	15	33	199	57
4	2012		8	5	14		16	15		7	9	16	106	20
	2013	*	*	*	9		9	8		*	5	9	68	11
	2014		*	*	4		5	4		*	*	5	53	7
5	2012		*	*	6		6	6		*	*	6	85	6
	2013			5	5		6	6		*	*	6	69	9
	2014		*	4	3		4	3		*	3	4	44	11
3-5	2012	*	22	15	40		42	40		18	24	42	412	71
	2013	*	6	45	62	*	64	61		37	27	64	361	98
	2014		8	32	40	*	42	40		23	19	42	296	75

NUMBER TESTED IN GRADES 3-5													
2012	1	26	36	67		71	69		27	44	71	682	
2013	2	8	77	96	3	98	94		51	47	98	523	
2014		10	62	71	2	75	73		40	35	75	454	

NUMBER UNSATISFACTORY (Level 1)

Grade	Year	White	African Amer	Hispanic	Econ Disadv	Special Educ	LEP	At Risk	Migrant	Male	Female	All	District	Number Tested (All Students)
6	2012		*	*	6		6	*		*	*	6	146	6
	2013		*	10	10		11	7		5	6	11	150	15
	2014			9	10		10	10		*	7	10	171	11
7	2012		*	*	6		7	*		*	*	7	177	7
	2013		*	13	16		16	13		9	7	16	162	18
	2014			7	6		7	6		2	*	7	176	12
8	2012		*	*	7		8	*		6	*	8	218	8
	2013			9	8		10	7		*	7	10	152	11
	2014			9	7		9	8		6	*	9	165	12
6-8	2012		8	10	19		21	15		13	8	21	541	21
	2013		*	32	34		37	27		17	20	37	464	44
	2014			25	23		26	24		11	15	26	512	35

NUMBER TESTED IN GRADES 6-8													
2012		8	10	19		21	15		13	8	21	620	
2013		2	39	41		44	34		21	23	44	634	
2014			34	29		35	31		18	17	35	722	

PERCENTAGE ADVANCED (Level 3)

Grade	Year	White	African Amer	Hispanic	Econ Disadv	Special Educ	LEP	At Risk	Migrant	Male	Female	All	District	Number Tested (All Students)
3	2012	*	0.0	14.3	9.3		8.9	9.1		0.0	13.8	8.9	4.6	45
	2013	*	*	6.3	5.2	*	5.1	5.3		7.0	2.9	5.1	1.5	78
	2014		0.0	6.1	5.5	*	5.3	5.3		6.3	4.0	5.3	2.3	57
4	2012		0.0	0.0	0.0		0.0	0.0		0.0	0.0	0.0	1.4	20
	2013	*	*	*	0.0		0.0	0.0		*	0.0	0.0	2.0	11
	2014		*	*	0.0		0.0	0.0		*	*	0.0	0.0	7
5	2012		*	*	0.0		0.0	0.0		*	*	0.0	0.0	6
	2013			0.0	0.0		0.0	0.0		*	*	0.0	0.0	9
	2014		*	0.0	0.0		0.0	0.0		*	0.0	0.0	0.0	11
3-5	2012	*	0.0	11.1	6.0		5.6	5.8		0.0	9.1	5.6	3.4	71
	2013	*	0.0	5.2	4.2	*	4.1	4.3		5.9	2.1	4.1	1.3	98
	2014		0.0	4.8	4.2	*	4.0	4.1		5.0	2.9	4.0	1.5	75

NUMBER TESTED IN GRADE 3-5													
2012	1	26	36	67		71	69		27	44	71	682	
2013	2	8	77	96	3	98	94		51	47	98	523	
2014		10	62	71	2	75	73		40	35	75	454	

PERCENTAGE ADVANCED (Level 3)

Grade	Year	White	African Amer	Hispanic	Econ Disadv	Special Educ	LEP	At Risk	Migrant	Male	Female	All	District	Number Tested (All Students)
6	2012		*	*	0.0		0.0	*		*	*	0.0	1.1	6
	2013		*	0.0	0.0		0.0	0.0		0.0	0.0	0.0	2.3	15
	2014			0.0	0.0		0.0	0.0		*	0.0	0.0	3.3	11
7	2012		*	*	0.0		0.0	*		*	*	0.0	0.0	7
	2013		*	0.0	0.0		0.0	0.0		0.0	0.0	0.0	0.9	18
	2014			0.0	0.0		0.0	0.0		0.0	*	0.0	0.0	12
8	2012		*	*	0.0		0.0	*		0.0	*	0.0	0.0	8
	2013			0.0	0.0		0.0	0.0		*	0.0	0.0	0.0	11
	2014			0.0	0.0		0.0	0.0		0.0	*	0.0	0.4	12
6-8	2012		0.0	0.0	0.0		0.0	0.0		0.0	0.0	0.0	0.3	21
	2013		*	0.0	0.0		0.0	0.0		0.0	0.0	0.0	1.1	44
	2014			0.0	0.0		0.0	0.0		0.0	0.0	0.0	1.2	35

NUMBER TESTED IN GRADE 6-8													
2012		8	10	19		21	15		13	8	21	620	
2013		2	39	41		44	34		21	23	44	634	
2014			34	29		35	31		18	17	35	722	

AVERAGE PERCENTAGE OF ITEMS CORRECT BY REPORTING CATEGORY

Grade	Year	REPORTING CATEGORY				
		1. Numbers, Operations, and Quantitative Reasoning	2. Patterns, Relationships, and Algebraic Reasoning	3. Geometry and Spatial Reasoning	4. Measurement	5. Probability and Statistics
3	2012	56.4	62.5	69.1	58.6	51.1
	2013	51.3	57.7	64.0	48.4	42.3
	2014	51.0	61.0	58.9	51.5	43.3
4	2012	50.9	47.5	50.0	31.9	35.0
	2013	52.9	28.8	47.0	30.7	50.9
	2014	34.5	40.5	44.0	26.8	48.6
5	2012	45.4	44.4	35.7	35.4	56.1
	2013	42.0	57.4	36.5	38.9	55.6
	2014	53.5	37.9	53.2	43.2	59.5
3-5	2012	53.9	56.7	60.9	49.1	47.0
	2013	50.6	54.4	59.5	45.5	44.5
	2014	49.8	55.7	56.7	48.0	46.1

AVERAGE PERCENTAGE OF ITEMS CORRECT BY REPORTING CATEGORY

Grade	Year	REPORTING CATEGORY				
		1. Numbers, Operations, and Quantitative Reasoning	2. Patterns, Relationships, and Algebraic Reasoning	3. Geometry and Spatial Reasoning	4. Measurement	5. Probability and Statistics
6	2012	26.0	19.4	27.1	31.3	25.0
	2013	29.6	30.0	39.2	28.3	30.8
	2014	27.3	34.8	30.7	26.1	20.5
7	2012	24.2	28.6	27.1	25.0	25.7
	2013	23.1	23.5	33.3	27.1	30.6
	2014	29.5	38.5	45.0	31.3	39.2
8	2012	39.8	18.8	26.6	26.9	27.5
	2013	26.4	26.6	25.0	29.4	24.5
	2014	34.8	33.9	28.1	44.9	27.5
6-8	2012	30.7	22.2	26.9	27.5	26.2
	2013	26.1	26.5	33.2	28.1	29.1
	2014	30.6	35.8	34.7	34.3	29.3

PERCENTAGE SATISFACTORY (Levels 2 and 3)

Test	Year	White	African Amer	Hispanic	Econ Disadv	Special Educ	LEP	At Risk	Migrant	Male	Female	All	District
ALGEBRA I	2012	*	*	65.4	61.5		61.3	30.8		55.6	69.2	61.3	42.9
	2013		*	54.8	46.7		50.0	48.3		56.5	36.4	50.0	51.2
	2014	*	*	51.2	53.1	*	46.8	47.5		48.3	44.4	46.8	42.9
Tests Taken	2012	2	1	26	26		31	13		18	13	31	282
	2013		3	31	30		34	29		23	11	34	320
	2014	1	3	43	32	1	47	40		29	18	47	471

NUMBER UNSATISFACTORY (Level 1)

Test	Year	White	African Amer	Hispanic	Econ Disadv	Special Educ	LEP	At Risk	Migrant	Male	Female	All	District
ALGEBRA I	2012	*	*	9	10		12	9		8	4	12	161
	2013		*	14	16		17	15		10	7	17	156
	2014	*	*	21	15	*	25	21		15	10	25	269
Tests Taken	2012	2	1	26	26		31	13		18	13	31	282
	2013		3	31	30		34	29		23	11	34	320
	2014	1	3	43	32	1	47	40		29	18	47	471

PERCENTAGE ADVANCED (Level 3)

Test	Year	White	African Amer	Hispanic	Econ Disadv	Special Educ	LEP	At Risk	Migrant	Male	Female	All	District
ALGEBRA I	2012	*	*	0.0	0.0		0.0	0.0		0.0	0.0	0.0	2.5
	2013		*	0.0	0.0		0.0	0.0		0.0	0.0	0.0	4.1
	2014	*	*	0.0	0.0	*	0.0	0.0		0.0	0.0	0.0	2.3
Tests Taken	2012	2	1	26	26		31	13		18	13	31	282
	2013		3	31	30		34	29		23	11	34	320
	2014	1	3	43	32	1	47	40		29	18	47	471

AVERAGE PERCENTAGE OF ITEMS CORRECT BY REPORTING CATEGORY

ALGEBRA I	1. Functional Relationships	2. Properties and Attributes of Functions	3. Linear Functions	4. Linear Equations and Inequalities	5. Quadratic and Other Nonlinear Functions
2012	57.3	43.8	40.2	38.7	52.0
2013	56.6	36.0	35.3	29.4	41.2
2014	46.3	42.0	40.7	33.6	46.8

PERCENTAGE SATISFACTORY (Levels 2 or 3)

Grade	Year	White	African Amer	Hispanic	Econ Disadv	Special Educ	LEP	At Risk	Migrant	Male	Female	All	District	Number Tested (All Students)
5	2012		*	*	*		*	*		*	*	*	17.0	5
	2013			*	*		*	*			*	*	20.3	3
	2014		*		33.3		33.3	33.3		*	*	33.3	16.1	6

NUMBER TESTED IN GRADE 5													
2012		4	1	5		5	5		1	4	5		88
2013			2	3		3	3			3	3		74
2014		5		6		6	6		2	4	6		56

PERCENTAGE SATISFACTORY (Levels 2 or 3)

Grade	Year	White	African Amer	Hispanic	Econ Disadv	Special Educ	LEP	At Risk	Migrant	Male	Female	All	District	Number Tested (All Students)
8	2012		*	*	0.0		0.0	0.0		0.0	*	0.0	14.2	9
	2013			10.0	20.0		16.7	22.2		*	25.0	16.7	13.3	12
	2014		*	4.0	4.3		3.8	4.2		0.0	10.0	3.8	17.0	26

NUMBER TESTED IN GRADE 8													
2012		3	5	8		9	6		6	3	9	226	
2013			10	10		12	9		4	8	12	210	
2014		1	25	23		26	24		16	10	26	277	

NUMBER UNSATISFACTORY (Level 1)

Grade	Year	White	African Amer	Hispanic	Econ Disadv	Special Educ	LEP	At Risk	Migrant	Male	Female	All	District	Number Tested (All Students)
5	2012		*	*	*		*	*		*	*	*	73	5
	2013			*	*		*	*			*	*	59	3
	2014		*		4		4	4		*	*	4	47	6

NUMBER TESTED IN GRADE 5													
2012		4	1	5		5	5		1	4	5	88	
2013			2	3		3	3			3	3	74	
2014		5		6		6	6		2	4	6	56	

NUMBER UNSATISFACTORY (Level 1)

Grade	Year	White	African Amer	Hispanic	Econ Disadv	Special Educ	LEP	At Risk	Migrant	Male	Female	All	District	Number Tested (All Students)
8	2012		*	*	8		9	6		6	*	9	194	9
	2013			9	8		10	7		*	6	10	182	12
	2014		*	24	22		25	23		16	9	25	230	26

NUMBER TESTED IN GRADE 8													
2012		3	5	8		9	6		6	3	9	226	
2013			10	10		12	9		4	8	12	210	
2014		1	25	23		26	24		16	10	26	277	

PERCENTAGE ADVANCED (Level 3)

Grade	Year	White	African Amer	Hispanic	Econ Disadv	Special Educ	LEP	At Risk	Migrant	Male	Female	All	District	Number Tested (All Students)
5	2012		*	*	*		*	*		*	*	*	1.1	5
	2013			*	*		*	*			*	*	0.0	3
	2014		*		0.0		0.0	0.0		*	*	0.0	0.0	6

NUMBER TESTED IN GRADE 5													
2012		4	1	5		5	5		1	4	5	88	
2013			2	3		3	3			3	3	74	
2014		5		6		6	6		2	4	6	56	

PERCENTAGE ADVANCED (Level 3)

Grade	Year	White	African Amer	Hispanic	Econ Disadv	Special Educ	LEP	At Risk	Migrant	Male	Female	All	District	Number Tested (All Students)
8	2012		*	*	0.0		0.0	0.0		0.0	*	0.0	0.0	9
	2013			0.0	0.0		0.0	0.0		*	0.0	0.0	0.0	12
	2014		*	0.0	0.0		0.0	0.0		0.0	0.0	0.0	0.0	26

NUMBER TESTED IN GRADE 8													
2012		3	5	8		9	6		6	3	9	226	
2013			10	10		12	9		4	8	12	210	
2014		1	25	23		26	24		16	10	26	277	

AVERAGE PERCENTAGE OF ITEMS CORRECT BY REPORTING CATEGORY

Grade	Year	REPORTING CATEGORY			
		1. Matter and Energy	2. Force, Motion, and Energy	3. Earth and Space	4. Organisms and Environments
5	2012	*	*	*	*
	2013	*	*	*	*
	2014	43.8	38.3	44.4	50.0
8	2012	23.8	35.2	23.0	27.0
	2013	32.1	32.6	39.3	38.1
	2014	28.6	29.8	38.5	33.0

PERCENTAGE SATISFACTORY (Levels 2 and 3)

Test	Year	White	African Amer	Hispanic	Econ Disadv	Special Educ	LEP	At Risk	Migrant	Male	Female	All	District
BIOLOGY	2012	*	*	23.1	14.3		18.8	14.3		22.2	14.3	18.8	25.5
	2013		*	54.5	50.0		53.8	53.8		58.8	44.4	53.8	49.0
	2014	*	*	28.1	27.1	*	25.8	26.4		13.9	42.3	25.8	42.6
Tests Taken	2012	1	2	13	14		16	7		9	7	16	200
	2013		3	22	22		26	26		17	9	26	259
	2014	2	2	57	48	2	62	53		36	26	62	404

NUMBER UNSATISFACTORY (Level 1)

Test	Year	White	African Amer	Hispanic	Econ Disadv	Special Educ	LEP	At Risk	Migrant	Male	Female	All	District
BIOLOGY	2012	*	*	10	12		13	6		7	6	13	149
	2013		*	10	11		12	12		7	5	12	132
	2014	*	*	41	35	*	46	39		31	15	46	232
Tests Taken	2012	1	2	13	14		16	7		9	7	16	200
	2013		3	22	22		26	26		17	9	26	259
	2014	2	2	57	48	2	62	53		36	26	62	404

PERCENTAGE ADVANCED (Level 3)

Test	Year	White	African Amer	Hispanic	Econ Disadv	Special Educ	LEP	At Risk	Migrant	Male	Female	All	District
BIOLOGY	2012	*	*	0.0	0.0		0.0	0.0		0.0	0.0	0.0	0.0
	2013		*	0.0	0.0		0.0	0.0		0.0	0.0	0.0	0.0
	2014	*	*	0.0	0.0	*	0.0	0.0		0.0	0.0	0.0	0.2
Tests Taken	2012	1	2	13	14		16	7		9	7	16	200
	2013		3	22	22		26	26		17	9	26	259
	2014	2	2	57	48	2	62	53		36	26	62	404

AVERAGE PERCENTAGE OF ITEMS CORRECT BY REPORTING CATEGORY

BIOLOGY	1. Cell Structure and Function	2. Mechanisms of Genetics	3. Biological Evolution and Classification	4. Biological Processes and Systems	5. Interdependence within Environmental Systems
2012	24.4	33.0	33.8	35.8	26.7
2013	37.1	37.8	39.6	32.9	49.0
2014	30.2	30.9	33.1	31.5	33.1

PERCENTAGE SATISFACTORY (Levels 2 or 3)

Grade	Year	White	African Amer	Hispanic	Econ Disadv	Special Educ	LEP	At Risk	Migrant	Male	Female	All	District	Number Tested (All Students)
8	2012		*	*	0.0		0.0	0.0		0.0	*	0.0	11.1	9
	2013			10.0	10.0		8.3	11.1		*	12.5	8.3	18.6	12
	2014		*	4.0	4.3		3.8	4.2		6.3	0.0	3.8	11.0	26

NUMBER TESTED IN GRADE 8													
2012		3	5	8		9	6		6	3	9	226	
2013			10	10		12	9		4	8	12	204	
2014		1	25	23		26	24		16	10	26	272	

NUMBER UNSATISFACTORY (Level 1)

Grade	Year	White	African Amer	Hispanic	Econ Disadv	Special Educ	LEP	At Risk	Migrant	Male	Female	All	District	Number Tested (All Students)
8	2012		*	*	8		9	6		6	*	9	201	9
	2013			9	9		11	8		*	7	11	166	12
	2014		*	24	22		25	23		15	10	25	242	26

NUMBER TESTED IN GRADE8													
2012		3	5	8		9	6		6	3	9	226	
2013			10	10		12	9		4	8	12	204	
2014		1	25	23		26	24		16	10	26	272	

PERCENTAGE ADVANCED (Level 3)

Grade	Year	White	African Amer	Hispanic	Econ Disadv	Special Educ	LEP	At Risk	Migrant	Male	Female	All	District	Number Tested (All Students)
8	2012		*	*	0.0		0.0	0.0		0.0	*	0.0	0.0	9
	2013			0.0	0.0		0.0	0.0		*	0.0	0.0	1.0	12
	2014		*	0.0	0.0		0.0	0.0		0.0	0.0	0.0	0.4	26

NUMBER TESTED IN GRADE 8													
2012		3	5	8		9	6		6	3	9	226	
2013			10	10		12	9		4	8	12	204	
2014		1	25	23		26	24		16	10	26	272	

AVERAGE PERCENTAGE OF ITEMS CORRECT BY REPORTING CATEGORY

Grade	Year	REPORTING CATEGORY			
		1. History	2. Geography and Culture	3. Government and Citizenship	4. Economics, Science, Technology, and Society
8	2012	25.0	25.0	26.9	29.2
	2013	28.8	33.3	34.0	27.1
	2014	31.5	30.4	33.7	21.2

PERCENTAGE SATISFACTORY (Levels 2 or 3)

Grade	Year	White	African Amer	Hispanic	Econ Disadv	Special Educ	LEP	At Risk	Migrant	Male	Female	All	District	Number Tested (All Students)
3	2012		68.8	62.5	66.7	66.7	71.4	61.1		66.7	66.7	66.7	54.7	24
	2013		50.0	57.1	52.9	52.9	*	46.7		45.5	66.7	52.9	67.5	17
	2014		38.5	64.3	50.0	51.9	57.1	54.5		57.9	37.5	51.9	63.3	27
4	2012	*	60.0	37.5	48.4	51.5	37.5	41.7		52.4	50.0	51.5	58.0	33
	2013		65.0	30.8	53.1	51.5	22.2	40.0		45.5	63.6	51.5	60.2	33
	2014		50.0	63.6	54.2	55.6	57.1	50.0		38.9	88.9	55.6	62.9	27
5	2012		83.3	62.5	76.7	73.5	66.7	69.2		68.8	77.8	73.5	67.0	34
	2013	*	100.0	82.4	87.2	87.5	80.0	80.0		86.7	90.0	87.5	86.5	40
	2014	*	92.3	74.1	81.6	83.3	78.9	82.6		77.8	94.4	83.3	86.3	54
3-5	2012	*	70.4	56.3	63.5	63.7	58.3	57.4		61.8	66.7	63.7	61.0	91
	2013	*	75.5	59.5	68.2	67.8	54.5	60.0		65.1	74.1	67.8	73.4	90
	2014	*	67.3	69.2	67.7	68.5	69.7	67.4		63.0	80.0	68.5	73.2	108

NUMBER TESTED IN GRADES 3-5													
2012	4	54	32	85	91	24	68		55	36	91	1,384	
2013	3	49	37	88	90	22	55		63	27	90	1,434	
2014	1	55	52	93	108	33	92		73	35	108	1,362	

PERCENTAGE SATISFACTORY (Levels 2 or 3)

Grade	Year	White	African Amer	Hispanic	Econ Disadv	Special Educ	LEP	At Risk	Migrant	Male	Female	All	District	Number Tested (All Students)
6	2012	*	35.3	*	36.8	34.8	*	27.8		29.4	50.0	34.8	65.5	23
	2013		67.9	52.0	61.5	60.4	57.1	60.0		50.0	82.4	60.4	55.9	53
	2014	*	68.4	63.3	62.8	61.5	60.0	61.2		60.0	66.7	61.5	51.6	52
7	2012		57.1	60.0	61.5	58.1	66.7	57.1		66.7	46.2	58.1	57.3	31
	2013	*	40.9	58.3	48.5	50.0	57.1	46.2		54.2	41.7	50.0	61.0	36
	2014		58.3	59.1	54.1	59.6	55.6	55.0		60.0	58.8	59.6	55.4	47
8	2012		40.0	37.5	34.6	38.7	*	36.0		35.3	42.9	38.7	58.0	31
	2013		81.0	84.2	86.5	82.9	92.3	82.1		81.5	85.7	82.9	74.5	41
	2014	*	90.5	89.5	89.5	88.1	90.9	86.5		82.6	94.7	88.1	75.0	42
6-8	2012	*	45.3	45.2	45.1	44.7	53.8	42.3		44.2	45.5	44.7	60.3	85
	2013	*	63.4	64.3	65.6	64.6	68.3	64.8		60.9	72.1	64.6	63.6	130
	2014	*	71.9	69.0	68.6	68.8	64.8	66.7		65.6	75.0	68.8	60.0	141

NUMBER TESTED IN GRADES 6-8													
2012	1	53	31	71	85	13	71		52	33	85	1,571	
2013	1	71	56	122	130	41	105		87	43	130	1,687	
2014	3	64	71	118	141	54	126		93	48	141	1,689	

NUMBER UNSATISFACTORY (Level 1)

Grade	Year	White	African Amer	Hispanic	Econ Disadv	Special Educ	LEP	At Risk	Migrant	Male	Female	All	District	Number Tested (All Students)
3	2012		5	3	8	8	2	7		6	2	8	149	24
	2013		5	3	8	8	*	8		6	2	8	114	17
	2014		8	5	10	13	3	10		8	5	13	114	27
4	2012	*	8	5	16	16	5	14		10	6	16	201	33
	2013		7	9	15	16	7	9		12	4	16	184	33
	2014		8	4	11	12	3	12		11	1	12	170	27
5	2012		3	6	7	9	3	8		5	4	9	190	34
	2013	*	0	3	5	5	2	5		4	1	5	84	40
	2014	*	2	7	9	9	4	8		8	1	9	81	54
3-5	2012	*	16	14	31	33	10	29		21	12	33	540	91
	2013	*	12	15	28	29	10	22		22	7	29	382	90
	2014	*	18	16	30	34	10	30		27	7	34	365	108

NUMBER TESTED IN GRADES 3-5													
2012	4	54	32	85	91	24	68		55	36	91	1,384	
2013	3	49	37	88	90	22	55		63	27	90	1,434	
2014	1	55	52	93	108	33	92		73	35	108	1,362	

NUMBER UNSATISFACTORY (Level 1)

Grade	Year	White	African Amer	Hispanic	Econ Disadv	Special Educ	LEP	At Risk	Migrant	Male	Female	All	District	Number Tested (All Students)
6	2012	*	11	*	12	15	*	13		12	3	15	181	23
	2013		9	12	20	21	9	16		18	3	21	270	53
	2014	*	6	11	16	20	10	19		16	4	20	281	52
7	2012		9	4	10	13	2	12		6	7	13	244	31
	2013	*	13	5	17	18	3	14		11	7	18	202	36
	2014		10	9	17	19	8	18		12	7	19	266	47
8	2012		9	10	17	19	*	16		11	8	19	199	31
	2013		4	3	5	7	1	7		5	2	7	142	41
	2014	*	2	2	4	5	1	5		4	1	5	128	42
6-8	2012	*	29	17	39	47	6	41		29	18	47	624	85
	2013	*	26	20	42	46	13	37		34	12	46	614	130
	2014	*	18	22	37	44	19	42		32	12	44	675	141

NUMBER TESTED IN GRADES 6-8													
2012	1	53	31	71	85	13	71		52	33	85	1,571	
2013	1	71	56	122	130	41	105		87	43	130	1,687	
2014	3	64	71	118	141	54	126		93	48	141	1,689	

PERCENTAGE ADVANCED (Level 3)

Grade	Year	White	African Amer	Hispanic	Econ Disadv	Special Educ	LEP	At Risk	Migrant	Male	Female	All	District	Number Tested (All Students)
3	2012		0.0	0.0	0.0	0.0	0.0	0.0		0.0	0.0	0.0	3.3	24
	2013		10.0	0.0	5.9	5.9	*	6.7		0.0	16.7	5.9	4.3	17
	2014		0.0	7.1	5.0	3.7	0.0	4.5		5.3	0.0	3.7	4.8	27
4	2012	*	0.0	0.0	0.0	0.0	0.0	0.0		0.0	0.0	0.0	3.3	33
	2013		5.0	0.0	3.1	3.0	0.0	0.0		4.5	0.0	3.0	3.5	33
	2014		18.8	18.2	12.5	18.5	14.3	12.5		16.7	22.2	18.5	6.3	27
5	2012		5.6	0.0	3.3	2.9	0.0	0.0		0.0	5.6	2.9	4.9	34
	2013	*	5.3	0.0	2.6	5.0	0.0	0.0		3.3	10.0	5.0	7.4	40
	2014	*	0.0	3.7	2.0	1.9	0.0	2.2		2.8	0.0	1.9	10.3	54
3-5	2012	*	1.9	0.0	1.2	1.1	0.0	0.0		0.0	2.8	1.1	4.0	91
	2013	*	6.1	0.0	3.4	4.4	0.0	1.8		3.2	7.4	4.4	5.4	90
	2014	*	5.5	7.7	5.4	6.5	3.0	5.4		6.8	5.7	6.5	7.7	108

NUMBER TESTED IN GRADE 3-5													
2012	4	54	32	85	91	24	68		55	36	91	1,384	
2013	3	49	37	88	90	22	55		63	27	90	1,434	
2014	1	55	52	93	108	33	92		73	35	108	1,362	

PERCENTAGE ADVANCED (Level 3)

Grade	Year	White	African Amer	Hispanic	Econ Disadv	Special Educ	LEP	At Risk	Migrant	Male	Female	All	District	Number Tested (All Students)
6	2012	*	0.0	*	0.0	0.0	*	0.0		0.0	0.0	0.0	3.6	23
	2013		0.0	0.0	0.0	0.0	0.0	0.0		0.0	0.0	0.0	3.1	53
	2014	*	5.3	6.7	7.0	5.8	4.0	6.1		5.0	8.3	5.8	2.9	52
7	2012		0.0	0.0	0.0	0.0	0.0	0.0		0.0	0.0	0.0	1.0	31
	2013	*	4.5	8.3	6.1	5.6	14.3	3.8		8.3	0.0	5.6	3.5	36
	2014		0.0	4.5	2.7	2.1	5.6	2.5		0.0	5.9	2.1	3.9	47
8	2012		0.0	0.0	0.0	0.0	*	0.0		0.0	0.0	0.0	1.1	31
	2013		0.0	0.0	0.0	0.0	0.0	0.0		0.0	0.0	0.0	2.5	41
	2014	*	0.0	5.3	2.6	2.4	0.0	0.0		4.3	0.0	2.4	2.9	42
6-8	2012	*	0.0	0.0	0.0	0.0	0.0	0.0		0.0	0.0	0.0	1.9	85
	2013	*	1.4	1.8	1.6	1.5	2.4	1.0		2.3	0.0	1.5	3.0	130
	2014	*	1.6	5.6	4.2	3.5	3.7	3.2		3.2	4.2	3.5	3.3	141

NUMBER TESTED IN GRADE 6-8													
2012	1	53	31	71	85	13	71		52	33	85	1,571	
2013	1	71	56	122	130	41	105		87	43	130	1,687	
2014	3	64	71	118	141	54	126		93	48	141	1,689	

AVERAGE PERCENTAGE OF ITEMS CORRECT BY REPORTING CATEGORY

Grade	Year	REPORTING CATEGORY		
		1. Understanding Across Genres (GR 3-5) 1. Understanding/Analysis Across Genres (GR 6-8)	2. Understanding/Analysis of Literary Texts	3. Understanding/Analysis of Informational Texts
3	2012	55.8	47.6	43.3
	2013	52.9	55.9	47.5
	2014	42.2	57.7	49.6
4	2012	48.9	57.6	49.2
	2013	50.8	55.6	54.3
	2014	54.2	57.7	57.5
5	2012	51.5	49.4	42.0
	2013	55.9	55.2	53.4
	2014	52.8	54.9	53.7
3-5	2012	51.7	51.9	44.9
	2013	53.5	55.5	52.6
	2014	50.5	56.3	53.6

AVERAGE PERCENTAGE OF ITEMS CORRECT BY REPORTING CATEGORY

Grade	Year	REPORTING CATEGORY		
		1. Understanding Across Genres (GR 3-5) 1. Understanding/Analysis Across Genres (GR 6-8)	2. Understanding/Analysis of Literary Texts	3. Understanding/Analysis of Informational Texts
6	2012	43.5	51.4	33.5
	2013	49.1	52.1	58.0
	2014	51.4	51.0	56.6
7	2012	52.8	55.0	45.2
	2013	49.0	53.4	46.5
	2014	56.1	54.8	42.7
8	2012	44.0	44.3	45.8
	2013	72.3	59.8	61.1
	2014	75.6	69.2	64.7
6-8	2012	47.1	50.1	42.2
	2013	56.3	54.9	55.8
	2014	60.2	57.7	54.4

PERCENTAGE SATISFACTORY (Levels 2 and 3)

Test	Year	White	African Amer	Hispanic	Econ Disadv	Special Educ	LEP	At Risk	Migrant	Male	Female	All	District
ENGLISH I	2012												
	2013												
	2014		73.3	68.2	71.0	70.3	54.5	67.6		73.1	63.6	70.3	50.6
Tests Taken	2012												
	2013												
	2014		15	22	31	37	11	34		26	11	37	405
ENGLISH II	2012												
	2013												
	2014		70.6	76.2	80.6	73.7	90.0	72.2		72.7	75.0	73.7	65.3
Tests Taken	2012												
	2013												
	2014		17	21	31	38	10	36		22	16	38	340

NUMBER UNSATISFACTORY (Level 1)

Test	Year	White	African Amer	Hispanic	Econ Disadv	Special Educ	LEP	At Risk	Migrant	Male	Female	All	District
ENGLISH I	2012												
	2013												
	2014		4	7	9	11	5	11		7	4	11	200
Tests Taken	2012												
	2013												
	2014		15	22	31	37	11	34		26	11	37	405
ENGLISH II	2012												
	2013												
	2014		5	5	6	10	1	10		6	4	10	118
Tests Taken	2012												
	2013												
	2014		17	21	31	38	10	36		22	16	38	340

PERCENTAGE ADVANCED (Level 3)

Test	Year	White	African Amer	Hispanic	Econ Disadv	Special Educ	LEP	At Risk	Migrant	Male	Female	All	District
ENGLISH I	2012												
	2013												
	2014		6.7	9.1	9.7	8.1	0.0	8.8		11.5	0.0	8.1	3.5
Tests Taken	2012												
	2013												
	2014		15	22	31	37	11	34		26	11	37	405
ENGLISH II	2012												
	2013												
	2014		11.8	9.5	12.9	10.5	0.0	5.6		9.1	12.5	10.5	12.6
Tests Taken	2012												
	2013												
	2014		17	21	31	38	10	36		22	16	38	340

AVERAGE PERCENTAGE OF ITEMS CORRECT BY REPORTING CATEGORY

ENGLISH I	1. Understanding & Analysis Across Genres	2. Understanding & Analysis of Literary Texts	3. Understanding & Analysis of Informational Texts	4. Literary Composition ¹	5. Revision	6. Editing
2012						
2013						
2014	68.9	55.6	63.4	2.9	58.9	72.1

ENGLISH II	1. Understanding & Analysis Across Genres	2. Understanding & Analysis of Literary Texts	3. Understanding & Analysis of Informational Texts	4. Expository Composition ¹	5. Revision	6. Editing
2012						
2013						
2014	59.9	58.5	51.8	3.1	48.0	64.6

¹Average score points (range 0-6). A STAAR M composition is rated twice on a scale of 0 to 3, and the ratings are summed to determine score points for the composition. Score point scale: 0=Non-scorable; 2=Very Limited; 3=between Very Limited and Basic; 4=Basic; 5=between Basic and Satisfactory; 6=Satisfactory

PERCENTAGE SATISFACTORY (Levels 2 or 3)

Grade	Year	White	African Amer	Hispanic	Econ Disadv	Special Educ	LEP	At Risk	Migrant	Male	Female	All	District	Number Tested (All Students)
4	2012	*	72.2	0.0	51.9	50.0	0.0	42.9		44.4	60.0	50.0	57.5	28
	2013		55.0	28.6	43.8	44.1	20.0	26.7		28.0	88.9	44.1	48.9	34
	2014		56.3	40.0	47.8	50.0	33.3	43.5		38.9	75.0	50.0	47.7	26

NUMBER TESTED IN GRADE 4													
2012	3	18	6	27	28	6	21		18	10	28	475	
2013		20	14	32	34	10	15		25	9	34	452	
2014		16	10	23	26	6	23		18	8	26	449	

PERCENTAGE SATISFACTORY (Levels 2 or 3)

Grade	Year	White	African Amer	Hispanic	Econ Disadv	Special Educ	LEP	At Risk	Migrant	Male	Female	All	District	Number Tested (All Students)
7	2012		52.6	40.0	50.0	46.7	*	51.9		50.0	42.9	46.7	56.7	30
	2013	*	59.1	72.7	66.7	62.9	66.7	57.7		70.8	45.5	62.9	63.7	35
	2014		76.9	58.3	69.2	66.7	52.6	65.9		55.9	88.2	66.7	62.9	51

NUMBER TESTED IN GRADE 7													
2012		19	10	24	30	5	27		16	14	30	586	
2013	1	22	11	33	35	6	26		24	11	35	509	
2014		26	24	39	51	19	44		34	17	51	599	

NUMBER UNSATISFACTORY (Level 1)

Grade	Year	White	African Amer	Hispanic	Econ Disadv	Special Educ	LEP	At Risk	Migrant	Male	Female	All	District	Number Tested (All Students)
4	2012	*	5	6	13	14	6	12		10	4	14	202	28
	2013		9	10	18	19	8	11		18	1	19	231	34
	2014		7	6	12	13	4	13		11	2	13	235	26

NUMBER TESTED IN GRADE 4													
2012	3	18	6	27	28	6	21		18	10	28	475	
2013		20	14	32	34	10	15		25	9	34	452	
2014		16	10	23	26	6	23		18	8	26	449	

NUMBER UNSATISFACTORY (Level 1)

Grade	Year	White	African Amer	Hispanic	Econ Disadv	Special Educ	LEP	At Risk	Migrant	Male	Female	All	District	Number Tested (All Students)
7	2012		9	6	12	16	*	13		8	8	16	254	30
	2013	*	9	3	11	13	2	11		7	6	13	185	35
	2014		6	10	12	17	9	15		15	2	17	222	51

NUMBER TESTED IN GRADE 7													
2012		19	10	24	30	5	27		16	14	30	586	
2013	1	22	11	33	35	6	26		24	11	35	509	
2014		26	24	39	51	19	44		34	17	51	599	

PERCENTAGE ADVANCED (Level 3)

Grade	Year	White	African Amer	Hispanic	Econ Disadv	Special Educ	LEP	At Risk	Migrant	Male	Female	All	District	Number Tested (All Students)
4	2012	*	5.6	0.0	3.7	3.6	0.0	4.8		5.6	0.0	3.6	5.3	28
	2013		10.0	7.1	6.3	8.8	0.0	0.0		4.0	22.2	8.8	8.6	34
	2014		6.3	20.0	8.7	11.5	16.7	8.7		0.0	37.5	11.5	8.5	26

NUMBER TESTED IN GRADE 4													
2012	3	18	6	27	28	6	21		18	10	28	475	
2013		20	14	32	34	10	15		25	9	34	452	
2014		16	10	23	26	6	23		18	8	26	449	

PERCENTAGE ADVANCED (Level 3)

Grade	Year	White	African Amer	Hispanic	Econ Disadv	Special Educ	LEP	At Risk	Migrant	Male	Female	All	District	Number Tested (All Students)
7	2012		0.0	0.0	0.0	0.0	*	0.0		0.0	0.0	0.0	2.7	30
	2013	*	9.1	9.1	9.1	8.6	16.7	7.7		4.2	18.2	8.6	6.3	35
	2014		3.8	0.0	2.6	2.0	0.0	2.3		2.9	0.0	2.0	6.3	51

NUMBER TESTED IN GRADE 7													
2012		19	10	24	30	5	27		16	14	30	586	
2013	1	22	11	33	35	6	26		24	11	35	509	
2014		26	24	39	51	19	44		34	17	51	599	

AVERAGE PERCENTAGE OF ITEMS CORRECT BY REPORTING CATEGORY

Grade	Year	REPORTING CATEGORY		
		1. Composition ¹ GR 4: Personal Narrative GR 7: Expository	2. Revision	3. Editing
4	2012	1.2	33.7	52.1
	2013	2.3	55.0	52.2
	2014	2.3	52.7	57.2
7	2012	1.1	42.8	47.2
	2013	2.3	55.4	49.3
	2014	2.6	55.5	48.7

¹Average score points (range 0-6). A STAAR M composition is rated twice on a scale of 0 to 3, and the ratings are summed to determine score points for the composition. Score point scale: 0=Non-scorable; 2=Very Limited; 3=between Very Limited and Basic; 4=Basic; 5=between Basic and Satisfactory; 6=Satisfactory

PERCENTAGE SATISFACTORY (Levels 2 or 3)

Grade	Year	White	African Amer	Hispanic	Econ Disadv	Special Educ	LEP	At Risk	Migrant	Male	Female	All	District	Number Tested (All Students)
3	2012		43.8	60.0	51.6	51.6	61.5	56.0		54.5	44.4	51.6	52.0	31
	2013		70.0	71.4	70.6	70.6	*	66.7		63.6	83.3	70.6	64.4	17
	2014		38.5	73.3	57.1	57.1	77.8	65.2		60.0	50.0	57.1	64.2	28
4	2012	*	73.7	62.5	60.0	59.4	50.0	60.9		65.0	50.0	59.4	61.2	32
	2013		68.4	78.9	72.2	73.7	85.7	75.0		72.0	76.9	73.7	61.7	38
	2014		76.5	87.5	81.0	80.0	83.3	77.3		75.0	88.9	80.0	70.3	25
5	2012		68.8	61.1	63.3	64.7	55.6	59.3		72.2	56.3	64.7	60.6	34
	2013	*	85.7	62.5	69.2	70.7	60.0	61.5		76.7	54.5	70.7	77.2	41
	2014	*	84.6	80.8	81.6	81.1	84.2	84.4		76.5	89.5	81.1	79.1	53
3-5	2012	*	62.7	61.0	58.2	58.8	56.7	58.7		63.3	51.4	58.8	58.7	97
	2013	*	76.0	71.4	70.7	71.9	74.1	67.2		72.7	70.0	71.9	69.1	96
	2014	*	71.4	79.6	75.8	74.5	82.4	77.8		71.4	80.6	74.5	72.7	106

NUMBER TESTED IN GRADES 3-5													
2012	4	51	41	91	97	30	75		60	37	97	1,354	
2013	3	50	42	92	96	27	61		66	30	96	1,433	
2014	1	56	49	91	106	34	90		70	36	106	1,378	

PERCENTAGE SATISFACTORY (Levels 2 or 3)

Grade	Year	White	African Amer	Hispanic	Econ Disadv	Special Educ	LEP	At Risk	Migrant	Male	Female	All	District	Number Tested (All Students)
6	2012	*	42.1	*	31.8	32.0	*	30.0		38.9	14.3	32.0	46.2	25
	2013		53.1	58.3	56.4	55.4	60.0	61.0		53.8	58.8	55.4	54.3	56
	2014	*	52.6	60.0	62.8	55.8	60.0	55.1		61.0	36.4	55.8	52.0	52
7	2012		38.1	72.7	44.4	48.5	83.3	48.3		61.1	33.3	48.5	50.5	33
	2013	*	30.4	53.8	40.0	36.8	50.0	39.3		44.0	23.1	36.8	49.4	38
	2014		48.0	65.2	61.5	57.1	55.6	54.8		48.4	72.2	57.1	48.8	49
8	2012		37.5	28.6	32.0	33.3	*	26.1		29.4	38.5	33.3	46.2	30
	2013		72.0	94.7	79.5	81.8	100.0	83.3		79.3	86.7	81.8	71.4	44
	2014	*	65.0	73.7	68.4	70.7	63.6	67.6		78.3	61.1	70.7	71.0	41
6-8	2012	*	39.3	40.0	36.5	38.6	46.2	36.1		43.4	31.4	38.6	47.7	88
	2013	*	52.5	69.6	58.9	58.7	70.7	64.0		59.1	57.8	58.7	58.5	138
	2014	*	54.7	65.3	64.2	60.6	59.3	58.6		61.1	59.6	60.6	56.7	142

NUMBER TESTED IN GRADES 6-8													
2012	1	56	30	74	88	13	72		53	35	88	1,554	
2013	1	80	56	129	138	41	111		93	45	138	1,659	
2014	3	64	72	120	142	54	128		95	47	142	1,684	

NUMBER UNSATISFACTORY (Level 1)

Grade	Year	White	African Amer	Hispanic	Econ Disadv	Special Educ	LEP	At Risk	Migrant	Male	Female	All	District	Number Tested (All Students)
3	2012		9	6	15	15	5	11		10	5	15	157	31
	2013		3	2	5	5	*	5		4	1	5	120	17
	2014		8	4	9	12	2	8		8	4	12	113	28
4	2012	*	5	3	12	13	4	9		7	6	13	182	32
	2013		6	4	10	10	2	5		7	3	10	181	38
	2014		4	1	4	5	1	5		4	1	5	138	25
5	2012		5	7	11	12	4	11		5	7	12	220	34
	2013	*	3	6	12	12	4	10		7	5	12	142	41
	2014	*	4	5	9	10	3	7		8	2	10	125	53
3-5	2012	*	19	16	38	40	13	31		22	18	40	559	97
	2013	*	12	12	27	27	7	20		18	9	27	443	96
	2014	*	16	10	22	27	6	20		20	7	27	376	106

NUMBER TESTED IN GRADES 3-5													
2012	4	51	41	91	97	30	75		60	37	97	1,354	
2013	3	50	42	92	96	27	61		66	30	96	1,433	
2014	1	56	49	91	106	34	90		70	36	106	1,378	

NUMBER UNSATISFACTORY (Level 1)

Grade	Year	White	African Amer	Hispanic	Econ Disadv	Special Educ	LEP	At Risk	Migrant	Male	Female	All	District	Number Tested (All Students)
6	2012	*	11	*	15	17	*	14		11	6	17	276	25
	2013		15	10	24	25	8	16		18	7	25	272	56
	2014	*	9	12	16	23	10	22		16	7	23	271	52
7	2012		13	3	15	17	1	15		7	10	17	276	33
	2013	*	16	6	21	24	4	17		14	10	24	257	38
	2014		13	8	15	21	8	19		16	5	21	310	49
8	2012		10	10	17	20	*	17		12	8	20	260	30
	2013		7	1	8	8	0	7		6	2	8	159	44
	2014	*	7	5	12	12	4	12		5	7	12	149	41
6-8	2012	*	34	18	47	54	7	46		30	24	54	812	88
	2013	*	38	17	53	57	12	40		38	19	57	688	138
	2014	*	29	25	43	56	22	53		37	19	56	730	142

NUMBER TESTED IN GRADES 6-8													
2012	1	56	30	74	88	13	72		53	35	88	1,554	
2013	1	80	56	129	138	41	111		93	45	138	1,659	
2014	3	64	72	120	142	54	128		95	47	142	1,684	

PERCENTAGE ADVANCED (Level 3)

Grade	Year	White	African Amer	Hispanic	Econ Disadv	Special Educ	LEP	At Risk	Migrant	Male	Female	All	District	Number Tested (All Students)
3	2012		0.0	0.0	0.0	0.0	0.0	0.0		0.0	0.0	0.0	4.0	31
	2013		0.0	0.0	0.0	0.0	*	0.0		0.0	0.0	0.0	7.4	17
	2014		0.0	6.7	4.8	3.6	11.1	4.3		5.0	0.0	3.6	7.6	28
4	2012	*	0.0	0.0	0.0	0.0	0.0	0.0		0.0	0.0	0.0	1.7	32
	2013		0.0	10.5	2.8	5.3	7.1	5.0		4.0	7.7	5.3	4.7	38
	2014		5.9	0.0	0.0	4.0	0.0	4.5		6.3	0.0	4.0	6.5	25
5	2012		0.0	0.0	0.0	0.0	0.0	0.0		0.0	0.0	0.0	0.7	34
	2013	*	0.0	0.0	0.0	0.0	0.0	0.0		0.0	0.0	0.0	3.9	41
	2014	*	3.8	3.8	4.1	3.8	0.0	2.2		0.0	10.5	3.8	6.0	53
3-5	2012	*	0.0	0.0	0.0	0.0	0.0	0.0		0.0	0.0	0.0	1.8	97
	2013	*	0.0	4.8	1.1	2.1	3.7	1.6		1.5	3.3	2.1	5.0	96
	2014	*	3.6	4.1	3.3	3.8	2.9	3.3		2.9	5.6	3.8	6.5	106

NUMBER TESTED IN GRADE 3-5													
2012	4	51	41	91	97	30	75			60	37	97	1,354
2013	3	50	42	92	96	27	61			66	30	96	1,433
2014	1	56	49	91	106	34	90			70	36	106	1,378

PERCENTAGE ADVANCED (Level 3)

Grade	Year	White	African Amer	Hispanic	Econ Disadv	Special Educ	LEP	At Risk	Migrant	Male	Female	All	District	Number Tested (All Students)
6	2012	*	0.0	*	0.0	0.0	*	0.0		0.0	0.0	0.0	5.5	25
	2013		3.1	0.0	1.8	1.8	0.0	0.0		2.6	0.0	1.8	4.9	56
	2014	*	0.0	10.0	7.0	5.8	8.0	6.1		7.3	0.0	5.8	3.4	52
7	2012		0.0	0.0	0.0	0.0	0.0	0.0		0.0	0.0	0.0	1.1	33
	2013	*	0.0	0.0	0.0	0.0	0.0	0.0		0.0	0.0	0.0	3.0	38
	2014		4.0	0.0	2.6	2.0	0.0	2.4		0.0	5.6	2.0	2.3	49
8	2012		0.0	0.0	0.0	0.0	*	0.0		0.0	0.0	0.0	1.2	30
	2013		8.0	5.3	7.7	6.8	7.7	7.1		6.9	6.7	6.8	2.2	44
	2014	*	0.0	0.0	2.6	2.4	9.1	2.7		4.3	0.0	2.4	1.9	41
6-8	2012	*	0.0	0.0	0.0	0.0	0.0	0.0		0.0	0.0	0.0	2.6	88
	2013	*	3.8	1.8	3.1	2.9	2.4	2.7		3.2	2.2	2.9	3.4	138
	2014	*	1.6	4.2	4.2	3.5	5.6	3.9		4.2	2.1	3.5	2.6	142

NUMBER TESTED IN GRADE 6-8													
2012	1	56	30	74	88	13	72			53	35	88	1,554
2013	1	80	56	129	138	41	111			93	45	138	1,659
2014	3	64	72	120	142	54	128			95	47	142	1,684

AVERAGE PERCENTAGE OF ITEMS CORRECT BY REPORTING CATEGORY

Grade	Year	REPORTING CATEGORY				
		1. Numbers, Operations, and Quantitative Reasoning	2. Patterns, Relationships, and Algebraic Reasoning	3. Geometry and Spatial Reasoning	4. Measurement	5. Probability and Statistics
3	2012	41.9	49.5	53.5	51.1	51.6
	2013	64.3	64.7	68.1	64.7	58.8
	2014	54.9	57.1	60.2	48.8	55.7
4	2012	48.3	56.3	44.7	37.5	39.8
	2013	61.9	62.6	50.5	49.1	54.6
	2014	59.1	62.4	60.0	54.7	53.0
5	2012	41.6	40.6	46.1	44.1	36.3
	2013	53.3	47.3	46.7	53.3	48.8
	2014	54.6	47.9	47.2	60.1	46.8
3-5	2012	43.9	48.6	48.0	44.2	42.4
	2013	58.7	56.5	52.0	53.6	52.9
	2014	55.7	53.8	53.6	55.8	50.6

AVERAGE PERCENTAGE OF ITEMS CORRECT BY REPORTING CATEGORY

Grade	Year	REPORTING CATEGORY				
		1. Numbers, Operations, and Quantitative Reasoning	2. Patterns, Relationships, and Algebraic Reasoning	3. Geometry and Spatial Reasoning	4. Measurement	5. Probability and Statistics
6	2012	34.3	34.4	46.7	28.0	40.7
	2013	45.4	45.5	51.8	37.5	56.0
	2014	47.7	49.8	51.6	41.0	57.7
7	2012	26.4	40.9	43.6	37.9	39.4
	2013	38.8	38.2	50.0	35.5	43.1
	2014	43.6	47.6	50.3	46.6	48.5
8	2012	29.0	37.0	28.3	34.7	40.4
	2013	50.2	58.9	51.1	45.5	59.7
	2014	47.3	55.2	42.7	49.5	49.7
6-8	2012	29.5	37.7	39.3	34.0	40.1
	2013	45.1	47.8	51.1	39.5	53.6
	2014	46.2	50.6	48.6	45.4	52.2

PERCENTAGE SATISFACTORY (Levels 2 and 3)

Test	Year	White	African Amer	Hispanic	Econ Disadv	Special Educ	LEP	At Risk	Migrant	Male	Female	All	District
ALGEBRA I	2012		6.7	37.5	18.2	17.4	*	15.0		17.6	16.7	17.4	32.5
	2013	*	26.3	27.8	28.6	26.3	37.5	28.6		31.8	18.8	26.3	36.9
	2014	*	62.5	56.0	63.6	59.5	53.8	59.5		59.4	60.0	59.5	46.1
Tests Taken	2012		15	8	22	23	3	20		17	6	23	280
	2013	1	19	18	35	38	8	35		22	16	38	339
	2014	1	16	25	33	42	13	37		32	10	42	360

NUMBER UNSATISFACTORY (Level 1)

Test	Year	White	African Amer	Hispanic	Econ Disadv	Special Educ	LEP	At Risk	Migrant	Male	Female	All	District
ALGEBRA I	2012		14	5	18	19	*	17		14	5	19	189
	2013	*	14	13	25	28	5	25		15	13	28	214
	2014	*	6	11	12	17	6	15		13	4	17	194
Tests Taken	2012		15	8	22	23	3	20		17	6	23	280
	2013	1	19	18	35	38	8	35		22	16	38	339
	2014	1	16	25	33	42	13	37		32	10	42	360

PERCENTAGE ADVANCED (Level 3)

Test	Year	White	African Amer	Hispanic	Econ Disadv	Special Educ	LEP	At Risk	Migrant	Male	Female	All	District
ALGEBRA I	2012		0.0	0.0	0.0	0.0	*	0.0		0.0	0.0	0.0	0.4
	2013	*	0.0	0.0	0.0	0.0	0.0	0.0		0.0	0.0	0.0	0.0
	2014	*	0.0	0.0	0.0	0.0	0.0	0.0		0.0	0.0	0.0	1.4
Tests Taken	2012		15	8	22	23	3	20		17	6	23	280
	2013	1	19	18	35	38	8	35		22	16	38	339
	2014	1	16	25	33	42	13	37		32	10	42	360

AVERAGE PERCENTAGE OF ITEMS CORRECT BY REPORTING CATEGORY

ALGEBRA I	1. Functional Relationships	2. Properties and Attributes of Functions	3. Linear Functions	4. Linear Equations and Inequalities	5. Quadratic and Other Nonlinear Functions
2012	37.7	33.9	37.0	36.4	21.7
2013	39.0	33.7	39.3	38.8	39.1
2014	59.5	46.2	50.2	48.2	43.2

PERCENTAGE SATISFACTORY (Levels 2 or 3)

Grade	Year	White	African Amer	Hispanic	Econ Disadv	Special Educ	LEP	At Risk	Migrant	Male	Female	All	District	Number Tested (All Students)
5	2012		75.0	43.8	55.2	59.4	55.6	53.8		53.3	64.7	59.4	48.8	32
	2013	*	57.1	53.3	53.1	55.9	70.0	45.5		62.5	33.3	55.9	58.1	34
	2014		66.7	50.0	61.9	58.7	46.7	55.0		51.7	70.6	58.7	55.5	46

NUMBER TESTED IN GRADE 5													
2012		16	16	29	32	9	26		15	17	32	531	
2013	3	14	15	32	34	10	22		24	9	34	540	
2014		24	22	42	46	15	40		29	17	46	501	

PERCENTAGE SATISFACTORY (Levels 2 or 3)

Grade	Year	White	African Amer	Hispanic	Econ Disadv	Special Educ	LEP	At Risk	Migrant	Male	Female	All	District	Number Tested (All Students)
8	2012	*	71.4	53.8	66.7	63.0	*	57.1		62.5	63.6	63.0	58.2	27
	2013		57.1	75.0	66.7	66.7	85.7	67.5		58.6	84.6	66.7	59.3	42
	2014	*	81.0	64.7	75.0	72.5	58.3	72.2		65.0	80.0	72.5	63.5	40

NUMBER TESTED IN GRADE 8													
2012	1	14	13	24	27	2	21		16	11	27	457	
2013		21	20	36	42	14	40		29	13	42	526	
2014	1	21	17	32	40	12	36		20	20	40	474	

NUMBER UNSATISFACTORY (Level 1)

Grade	Year	White	African Amer	Hispanic	Econ Disadv	Special Educ	LEP	At Risk	Migrant	Male	Female	All	District	Number Tested (All Students)
5	2012		4	9	13	13	4	12		7	6	13	272	32
	2013	*	6	7	15	15	3	12		9	6	15	226	34
	2014		8	11	16	19	8	18		14	5	19	223	46

NUMBER TESTED IN GRADE 5													
2012		16	16	29	32	9	26		15	17	32	531	
2013	3	14	15	32	34	10	22		24	9	34	540	
2014		24	22	42	46	15	40		29	17	46	501	

NUMBER UNSATISFACTORY (Level 1)

Grade	Year	White	African Amer	Hispanic	Econ Disadv	Special Educ	LEP	At Risk	Migrant	Male	Female	All	District	Number Tested (All Students)
8	2012	*	4	6	8	10	*	9		6	4	10	191	27
	2013		9	5	12	14	2	13		12	2	14	214	42
	2014	*	4	6	8	11	5	10		7	4	11	173	40

NUMBER TESTED IN GRADE 8													
2012	1	14	13	24	27	2	21		16	11	27	457	
2013		21	20	36	42	14	40		29	13	42	526	
2014	1	21	17	32	40	12	36		20	20	40	474	

PERCENTAGE ADVANCED (Level 3)

Grade	Year	White	African Amer	Hispanic	Econ Disadv	Special Educ	LEP	At Risk	Migrant	Male	Female	All	District	Number Tested (All Students)
5	2012		6.3	0.0	3.4	3.1	11.1	3.8		6.7	0.0	3.1	6.2	32
	2013	*	0.0	6.7	3.1	2.9	0.0	0.0		0.0	11.1	2.9	6.1	34
	2014		4.2	4.5	4.8	4.3	0.0	5.0		3.4	5.9	4.3	7.6	46

NUMBER TESTED IN GRADE 5													
2012		16	16	29	32	9	26		15	17	32	531	
2013	3	14	15	32	34	10	22		24	9	34	540	
2014		24	22	42	46	15	40		29	17	46	501	

PERCENTAGE ADVANCED (Level 3)

Grade	Year	White	African Amer	Hispanic	Econ Disadv	Special Educ	LEP	At Risk	Migrant	Male	Female	All	District	Number Tested (All Students)
8	2012		0.0	0.0	0.0	0.0	*	0.0		0.0	0.0	0.0	0.4	27
	2013		4.8	5.0	2.8	4.8	0.0	5.0		6.9	0.0	4.8	2.5	42
	2014	*	4.8	0.0	6.3	5.0	8.3	5.6		5.0	5.0	5.0	3.8	40

NUMBER TESTED IN GRADE 8													
2012		14	13	24	27	2	21		16	11	27	457	
2013		21	20	36	42	14	40		29	13	42	526	
2014	1	21	17	32	40	12	36		20	20	40	474	

AVERAGE PERCENTAGE OF ITEMS CORRECT BY REPORTING CATEGORY

Grade	Year	REPORTING CATEGORY			
		1. Matter and Energy	2. Force, Motion, and Energy	3. Earth and Space	4. Organisms and Environments
5	2012	67.2	59.4	52.8	61.4
	2013	66.2	76.1	59.7	67.1
	2014	61.2	76.4	55.9	67.2
8	2012	46.1	48.1	58.6	46.8
	2013	62.6	64.5	64.5	61.5
	2014	63.0	66.8	66.1	60.0

PERCENTAGE SATISFACTORY (Levels 2 and 3)

Test	Year	White	African Amer	Hispanic	Econ Disadv	Special Educ	LEP	At Risk	Migrant	Male	Female	All	District
BIOLOGY	2012	*	27.3	75.0	50.0	47.4	*	47.1		50.0	*	47.4	31.7
	2013	*	33.3	33.3	33.3	32.5	37.5	35.1		34.8	29.4	32.5	42.6
	2014	*	70.0	47.8	55.6	59.1	46.2	56.4		62.5	50.0	59.1	46.6
Tests Taken	2012	1	11	8	18	19	3	17		14	5	19	262
	2013	1	21	18	36	40	8	37		23	17	40	331
	2014	1	20	23	36	44	13	39		32	12	44	350

NUMBER UNSATISFACTORY (Level 1)

Test	Year	White	African Amer	Hispanic	Econ Disadv	Special Educ	LEP	At Risk	Migrant	Male	Female	All	District
BIOLOGY	2012	*	8	2	9	10	*	9		7	*	10	179
	2013	*	14	12	24	27	5	24		15	12	27	190
	2014	*	6	12	16	18	7	17		12	6	18	187
Tests Taken	2012	1	11	8	18	19	3	17		14	5	19	262
	2013	1	21	18	36	40	8	37		23	17	40	331
	2014	1	20	23	36	44	13	39		32	12	44	350

PERCENTAGE ADVANCED (Level 3)

Test	Year	White	African Amer	Hispanic	Econ Disadv	Special Educ	LEP	At Risk	Migrant	Male	Female	All	District
BIOLOGY	2012		0.0	0.0	0.0	0.0	*	0.0		0.0	*	0.0	0.0
	2013	*	0.0	0.0	0.0	0.0	0.0	0.0		0.0	0.0	0.0	0.0
	2014	*	5.0	4.3	2.8	4.5	7.7	5.1		6.3	0.0	4.5	1.1
Tests Taken	2012		11	8	18	19	3	17		14	5	19	262
	2013	1	21	18	36	40	8	37		23	17	40	331
	2014	1	20	23	36	44	13	39		32	12	44	350

AVERAGE PERCENTAGE OF ITEMS CORRECT BY REPORTING CATEGORY

BIOLOGY	1. Cell Structure and Function	2. Mechanisms of Genetics	3. Biological Evolution and Classification	4. Biological Processes and Systems	5. Interdependence within Environmental Systems
2012	44.4	40.8	46.1	48.5	40.4
2013	47.2	37.5	47.8	50.0	39.7
2014	50.3	50.9	59.1	56.1	49.0

PERCENTAGE SATISFACTORY (Levels 2 or 3)

Grade	Year	White	African Amer	Hispanic	Econ Disadv	Special Educ	LEP	At Risk	Migrant	Male	Female	All	District	Number Tested (All Students)
8	2012		53.3	38.5	44.0	46.4	*	50.0		50.0	41.7	46.4	52.3	28
	2013		63.2	65.0	67.6	65.0	78.6	66.7		67.9	58.3	65.0	59.5	40
	2014	*	61.9	62.5	64.5	61.5	63.6	57.1		60.0	63.2	61.5	59.3	39

NUMBER TESTED IN GRADE 8													
2012		15	13	25	28	2	22		16	12	28	451	
2013		19	20	34	40	14	39		28	12	40	516	
2014	1	21	16	31	39	11	35		20	19	39	479	

NUMBER UNSATISFACTORY (Level 1)

Grade	Year	White	African Amer	Hispanic	Econ Disadv	Special Educ	LEP	At Risk	Migrant	Male	Female	All	District	Number Tested (All Students)
8	2012		7	8	14	15	*	11		8	7	15	215	28
	2013		7	7	11	14	3	13		9	5	14	209	40
	2014	*	8	6	11	15	4	15		8	7	15	195	39

NUMBER TESTED IN GRADE8													
2012		15	13	25	28	2	22		16	12	28	451	
2013		19	20	34	40	14	39		28	12	40	516	
2014	1	21	16	31	39	11	35		20	19	39	479	

PERCENTAGE ADVANCED (Level 3)

Grade	Year	White	African Amer	Hispanic	Econ Disadv	Special Educ	LEP	At Risk	Migrant	Male	Female	All	District	Number Tested (All Students)
8	2012		0.0	0.0	0.0	0.0	*	0.0		0.0	0.0	0.0	2.9	28
	2013		0.0	10.0	5.9	5.0	7.1	5.1		7.1	0.0	5.0	1.9	40
	2014	*	9.5	6.3	6.5	7.7	0.0	8.6		5.0	10.5	7.7	3.5	39

NUMBER TESTED IN GRADE 8													
2012		15	13	25	28	2	22		16	12	28	451	
2013		19	20	34	40	14	39		28	12	40	516	
2014	1	21	16	31	39	11	35		20	19	39	479	

AVERAGE PERCENTAGE OF ITEMS CORRECT BY REPORTING CATEGORY

Grade	Year	REPORTING CATEGORY			
		1. History	2. Geography and Culture	3. Government and Citizenship	4. Economics, Science, Technology, and Society
8	2012	44.9	41.4	44.6	48.2
	2013	54.2	61.3	53.8	62.1
	2014	56.7	62.8	52.6	56.4

PERCENTAGE SATISFACTORY (Levels 2 and 3)

Test	Year	White	African Amer	Hispanic	Econ Disadv	Special Educ	LEP	At Risk	Migrant	Male	Female	All	District
U.S. HISTORY	2012												
	2013												
	2014		0.0	0.0	0.0	0.0	*	0.0		0.0	*	0.0	0.0
Tests Taken	2012												
	2013												
	2014		14	6	19	20	4	18		15	5	20	226

NUMBER UNSATISFACTORY (Level 1)

Test	Year	White	African Amer	Hispanic	Econ Disadv	Special Educ	LEP	At Risk	Migrant	Male	Female	All	District
U.S. HISTORY	2012												
	2013												
	2014		14	6	19	20	*	18		15	*	20	226
Tests Taken	2012												
	2013												
	2014		14	6	19	20	4	18		15	5	20	226

PERCENTAGE ADVANCED (Level 3)

Test	Year	White	African Amer	Hispanic	Econ Disadv	Special Educ	LEP	At Risk	Migrant	Male	Female	All	District
U.S. HISTORY	2012												
	2013												
	2014		0.0	0.0	0.0	0.0	*	0.0		0.0	*	0.0	0.0
Tests Taken	2012												
	2013												
	2014		14	6	19	20	4	18		15	5	20	226

AVERAGE PERCENTAGE OF ITEMS CORRECT BY REPORTING CATEGORY

U.S. HISTORY	1. History	2. Geography and Culture	3. Government and Citizenship	4. Economics, Science, Technology, and Society
2012				
2013				
2014	43.8	44.4	40.6	43.8

PERCENTAGE AT OR ABOVE THE 40th PERCENTILE on the ITBS

Grade	Year	READING TOTAL (**READING PROFILE TOTAL)				
		At Risk	Not At Risk	All	District	Number Tested (All Students)
K**	2012	47.4	54.7	53.4	62.2	406
	2013	48.8	41.2	41.8	60.8	426
	2014	31.0	49.5	47.4	60.7	485
1	2012	36.4	48.2	44.8	55.4	429
	2013	36.3	46.4	44.3	55.0	463
	2014	27.5	38.2	36.4	47.2	456
2	2012	25.9	71.7	39.0	49.8	397
	2013	28.5	65.8	42.0	50.2	419
	2014	19.9	64.5	36.4	44.4	456
K-2	2012	32.0	54.6	45.8	55.8	826
	2013	33.9	45.6	42.5	56.7	1,308
	2014	23.8	48.3	42.1	53.1	1,397
# Tested (GR K-2)	2012	485	753	1,232	21,034	
	2013	451	1,289	1,734	28,878	
	2014	483	1,402	1,882	28,063	

Grade	Year	MATHEMATICS TOTAL (**MATHEMATICS)				
		At Risk	Not At Risk	All	District	Number Tested (All Students)
K**	2012	58.1	52.1	55.4	55.1	742
	2013	55.0	46.0	50.4	55.1	823
	2014	56.9	49.2	53.2	55.0	897
1	2012	38.9	45.3	41.6	50.7	719
	2013	46.7	43.9	45.5	52.0	785
	2014	38.3	43.7	40.7	46.0	907
2	2012	48.7	74.8	52.8	57.9	684
	2013	46.9	69.2	51.6	56.2	727
	2014	45.6	67.8	50.1	52.0	875
K-2	2012	48.6	52.5	49.9	54.5	2,145
	2013	49.2	49.1	49.1	54.4	2,335
	2014	46.4	50.3	47.9	51.0	2,679
# Tested (GR K-2)	2012	1,382	769	2,145	40,477	
	2013	1,406	934	2,335	40,966	
	2014	1,671	1,010	2,679	40,233	

PERCENTAGE AT OR ABOVE THE 40th PERCENTILE

Grade	Year	White	African Amer	Hispanic	Econ Disadv	Special Educ	LEP	At Risk	Migrant	Male	Female	All	District	Number Tested (All Students)
K**	2012	72.7	53.8	50.4	51.8	33.3	44.4	47.4		50.0	57.3	53.4	62.2	406
	2013	50.0	41.8	40.5	41.7	27.8	50.0	48.8		36.8	47.9	41.8	60.8	426
	2014	46.2	47.7	46.2	46.8	33.3	20.8	31.0		43.3	51.7	47.4	60.7	485
1	2012	61.5	43.8	44.3	45.1	25.0	33.3	36.4		39.5	50.0	44.8	55.4	429
	2013	*	40.3	51.9	43.9	18.8	39.1	36.3		42.9	45.8	44.3	55.0	463
	2014	16.7	35.7	37.5	35.5	32.0	19.2	27.5		32.7	41.3	36.4	47.2	456
2	2012	83.3	36.4	42.7	38.9	6.7	17.6	25.9		36.8	41.6	39.0	49.8	397
	2013	50.0	37.8	47.4	42.3	9.1	22.2	28.5		40.3	43.8	42.0	50.2	419
	2014	44.4	32.7	40.6	34.9	8.0	34.6	19.9		37.3	35.4	36.4	44.4	456
1-2	2012	68.4	40.2	43.5	42.2	14.0	25.7	29.0		38.2	46.1	42.0	52.7	826
	2013	50.0	40.0	46.6	42.6	17.9	32.6	32.4		40.0	45.8	42.7	55.4	1,308
	2014	35.3	38.9	41.5	39.2	23.5	25.0	22.8		37.7	43.1	40.2	50.6	1,397
# Tested (GR K-2)	2012	19	512	271	782	50	70	407		427	399	826	14,095	
	2013	20	773	481	1,231	56	86	410		683	625	1,308	21,640	
	2014	34	748	581	1,324	68	76	425		740	657	1,397	21,214	

**Kindergarten subscore is Reading Profile Total; no Reading Total subscore available.

NUMBER AT OR ABOVE THE 80th PERCENTILE

Grade	Year	White	African Amer	Hispanic	Econ Disadv	Special Educ	LEP	At Risk	Migrant	Male	Female	All	District	Number Tested (All Students)
K**	2012	3	62	20	83	0	5	13		43	46	89	2,027	406
	2013	3	31	25	55	2	3	7		28	34	62	2,108	426
	2014	2	43	18	61	1	1	3		29	38	67	1,938	485
1	2012	4	49	26	76	1	3	13		37	44	81	1,963	429
	2013	*	42	31	72	1	2	11		36	42	78	2,017	463
	2014	1	38	30	65	4	0	6		39	33	72	1,561	456
2	2012	3	17	8	25	2	1	11		15	14	29	1,017	397
	2013	0	16	13	30	0	2	6		14	18	32	1,045	419
	2014	2	17	13	26	0	1	8		20	13	33	950	456
1-2	2012	7	66	34	101	3	4	24		52	58	110	2,981	826
	2013	4	89	69	157	3	7	24		78	94	172	5,171	1,308
	2014	5	98	61	152	5	2	17		88	84	172	4,449	1,397
# Tested (GR K-2)	2012	19	512	271	782	50	70	407		427	399	826	14,095	
	2013	20	773	481	1,231	56	86	410		683	625	1,308	21,640	
	2014	34	748	581	1,324	68	76	425		740	657	1,397	21,214	

**Kindergarten subscore is Reading Profile Total; no Reading Total subscore available.

PERCENTAGE AT OR ABOVE THE 40th PERCENTILE

Grade	Year	White	African Amer	Hispanic	Econ Disadv	Special Educ	LEP	At Risk	Migrant	Male	Female	All	District	Number Tested (All Students)
K**	2012	68.8	49.2	58.4	54.7	26.7	57.7	58.1		53.0	58.1	55.4	55.1	742
	2013	50.0	42.4	53.9	49.7	34.5	55.8	55.0		45.6	55.4	50.4	55.1	823
	2014	42.1	48.1	56.1	52.9	39.1	56.7	56.9		51.1	55.5	53.2	55.0	897
1	2012	53.3	36.6	43.9	41.4	18.8	41.2	38.9		41.6	41.6	41.6	50.7	719
	2013	55.6	38.6	49.5	45.1	30.0	48.8	46.7		44.5	46.5	45.5	52.0	785
	2014	23.1	38.7	41.7	39.7	22.0	39.0	38.3		39.5	42.0	40.7	46.0	907
2	2012	50.0	41.2	59.7	52.8	18.4	59.0	48.7		52.5	53.1	52.8	57.9	684
	2013	62.5	39.8	57.1	51.6	22.9	52.9	46.9		52.1	51.0	51.6	56.2	727
	2014	53.8	38.9	54.6	49.9	30.0	55.0	45.6		51.4	48.6	50.1	52.0	875
K-2	2012	59.0	42.3	54.0	49.6	20.0	52.7	48.6		49.1	50.8	49.9	54.5	2,145
	2013	55.2	40.2	53.5	48.8	28.6	52.6	49.2		47.3	51.1	49.1	54.4	2,335
	2014	40.0	42.0	50.6	47.5	28.8	50.0	46.4		47.2	48.7	47.9	51.0	2,679
# Tested (GR K-2)	2012	39	768	1,299	2,052	85	971	1,382		1,112	1,033	2,145	40,477	
	2013	29	788	1,483	2,246	84	1,081	1,406		1,216	1,119	2,335	40,966	
	2014	45	759	1,840	2,572	104	1,308	1,671		1,397	1,282	2,679	40,233	

**Kindergarten test is Mathematics; no Mathematics Total score available.

NUMBER AT OR ABOVE THE 80th PERCENTILE

Grade	Year	White	African Amer	Hispanic	Econ Disadv	Special Educ	LEP	At Risk	Migrant	Male	Female	All	District	Number Tested (All Students)
K**	2012	3	32	83	115	2	70	79		57	66	123	2,472	742
	2013	2	24	111	128	3	88	92		57	80	137	2,594	823
	2014	3	32	128	161	2	111	112		92	73	165	2,598	897
1	2012	4	29	48	78	1	32	44		47	36	83	2,473	719
	2013	3	26	72	99	1	54	60		45	59	104	2,609	785
	2014	1	21	70	85	4	38	42		52	43	95	2,166	907
2	2012	3	21	92	114	1	63	81		65	53	118	2,843	684
	2013	2	29	84	116	3	62	78		69	51	120	2,626	727
	2014	2	22	95	115	3	74	85		63	57	120	2,408	875
K-2	2012	10	82	223	307	4	165	204		169	155	324	7,788	2,145
	2013	7	79	267	343	7	204	230		171	190	361	7,829	2,335
	2014	6	75	293	361	9	223	239		207	173	380	7,172	2,679
# Tested (GR K-2)	2012	39	768	1,299	2,052	85	971	1,382		1,112	1,033	2,145	40,477	
	2013	29	788	1,483	2,246	84	1,081	1,406		1,216	1,119	2,335	40,966	
	2014	45	759	1,840	2,572	104	1,308	1,671		1,397	1,282	2,679	40,233	

**Kindergarten test is Mathematics; no Mathematics Total score available.

PERCENTAGE AT OR ABOVE THE 40th PERCENTILE

Grade	Year	White	African Amer	Hispanic	Econ Disadv	Special Educ	LEP	At Risk	Migrant	Male	Female	All	District	Number Tested (All Students)
1	2012	66.7	44.7	59.0	54.1	30.0	59.3	55.8		54.7	53.0	53.8	62.5	717
	2013	55.6	46.6	63.4	57.2	36.8	65.9	62.5		57.1	56.7	56.9	63.6	784
	2014	25.0	45.2	60.9	55.7	47.2	61.7	60.0		56.4	56.1	56.3	58.6	903
2	2012	62.5	40.0	66.9	57.1	22.9	69.1	55.6		55.2	58.8	56.9	63.6	682
	2013	62.5	46.7	61.2	56.4	37.5	60.7	54.8		54.8	58.4	56.5	60.6	724
	2014	42.9	37.1	64.4	56.1	50.0	69.2	55.3		55.5	56.7	56.1	59.2	875
1-2	2012	65.2	42.4	62.9	55.6	26.2	64.2	55.7		54.9	55.7	55.3	63.0	1,399
	2013	58.8	46.7	62.3	56.8	37.3	63.3	58.1		56.0	57.5	56.7	62.1	1,508
	2014	34.6	41.1	62.6	55.9	48.6	65.3	57.3		56.0	56.4	56.2	58.9	1,778
# Tested (GR 1-2)	2012	23	509	844	1,341	65	634	975		719	680	1,399	26,880	
	2013	17	523	942	1,454	51	695	992		795	713	1,508	27,003	
	2014	26	492	1,238	1,710	74	880	1,208		922	856	1,778	26,955	

NUMBER AT OR ABOVE THE 80th PERCENTILE

Grade	Year	White	African Amer	Hispanic	Econ Disadv	Special Educ	LEP	At Risk	Migrant	Male	Female	All	District	Number Tested (All Students)
1	2012	6	50	105	157	3	83	96		91	73	164	4,060	717
	2013	2	47	137	183	3	109	121		87	101	188	4,150	784
	2014	2	44	176	210	8	124	135		127	100	227	3,708	903
2	2012	1	29	133	159	3	97	130		84	80	164	3,820	682
	2013	4	44	120	169	7	89	121		89	84	173	3,436	724
	2014	2	21	165	187	6	138	157		96	96	192	3,288	875
1-2	2012	7	79	238	316	6	180	226		175	153	328	7,880	1,399
	2013	6	91	257	352	10	198	242		176	185	361	7,586	1,508
	2014	4	65	341	397	14	262	292		223	196	419	6,996	1,778
# Tested (GR 1-2)	2012	23	509	844	1,341	65	634	975		719	680	1,399	26,880	
	2013	17	523	942	1,454	51	695	992		795	713	1,508	27,003	
	2014	26	492	1,238	1,710	74	880	1,208		922	856	1,778	26,955	

PERCENTAGE AT OR ABOVE THE 40th PERCENTILE

Grade	Year	White	African Amer	Hispanic	Econ Disadv	Special Educ	LEP	At Risk	Migrant	Male	Female	All	District	Number Tested (All Students)
K	2012	*	*	91.6	92.2	100.0	92.1	91.9		87.6	96.2	91.8	89.9	328
	2013	*		88.0	87.8	63.6	87.8	88.1		83.1	92.0	88.0	89.7	367
	2014	100.0		91.0	91.4	*	91.0	91.0		89.4	93.0	91.1	88.6	404
1	2012	*		88.9	89.0	80.0	88.6	88.7		85.7	92.3	88.9	89.2	289
	2013	*	*	89.3	88.9	*	89.2	89.2		85.8	92.7	89.0	87.6	326
	2014			86.3	86.5	50.0	86.1	86.2		82.1	90.0	86.3	84.6	452
2	2012	*		93.0	93.2	*	93.0	93.0		88.6	97.8	93.1	93.3	288
	2013	*		93.8	93.7	78.6	93.8	93.8		91.9	96.2	93.8	93.6	306
	2014	*	*	94.0	94.0	73.3	94.1	94.1		92.7	95.7	94.1	91.8	390
K-2	2012	100.0	*	91.2	91.5	80.0	91.3	91.2		87.3	95.5	91.3	90.8	905
	2013	87.5	*	90.2	90.0	73.3	90.1	90.2		87.0	93.4	90.1	90.3	999
	2014	100.0	*	90.2	90.5	61.8	90.2	90.2		88.0	92.6	90.3	88.2	1,246
# Tested (GR K-2)	2012	9	1	894	884	20	880	888		465	440	905	18,911	
	2013	8	1	989	987	30	988	989		515	484	999	18,629	
	2014	10	1	1,235	1,216	34	1,234	1,237		635	611	1,246	18,008	

NUMBER AT OR ABOVE THE 80th PERCENTILE

Grade	Year	White	African Amer	Hispanic	Econ Disadv	Special Educ	LEP	At Risk	Migrant	Male	Female	All	District	Number Tested (All Students)
K	2012	*	*	226	225	3	221	226		103	127	230	3,679	328
	2013	*		247	242	3	242	243		106	142	248	3,798	367
	2014	5		250	250	*	251	251		137	118	255	3,313	404
1	2012	*		128	127	1	123	124		59	69	128	2,437	289
	2013	*	*	166	169	*	169	169		75	95	170	2,394	326
	2014			180	172	3	175	177		71	109	180	2,123	452
2	2012	*		137	138	*	135	136		58	81	139	2,934	288
	2013	*		157	155	2	157	157		80	78	158	2,899	306
	2014	*	*	186	188	4	187	187		96	93	189	2,596	390
K-2	2012	5	*	491	490	4	479	486		220	277	497	9,050	905
	2013	5	*	570	566	6	568	569		261	315	576	9,091	999
	2014	8	*	616	610	8	613	615		304	320	624	8,032	1,246
# Tested (GR K-2)	2012	9	1	894	884	20	880	888		465	440	905	18,911	
	2013	8	1	989	987	30	988	989		515	484	999	18,629	
	2014	10	1	1,235	1,216	34	1,234	1,237		635	611	1,246	18,008	

PERCENTAGE DEMONSTRATING IMPROVEMENT

Grade	Level 1 in 2013		Level 2 in 2013		Level 3 in 2013		Levels 1-3 in 2013	
	Number Tested Both Years	Percentage Improved in 2014	Number Tested Both Years	Percentage Improved in 2014	Number Tested Both Years	Percentage Improved in 2014	Number Tested Both Years	Percentage Improved in 2014
5	7	14.3	1	*	0		8	25.0
6	16	31.3	36	52.8	0		52	46.2
7	12	16.7	22	72.7	0		34	52.9
8	22	31.8	16	50.0	0		38	39.5
9	43	20.9	18	27.8	0		61	23.0
10	25	32.0	20	40.0	0		45	35.6
11	10	30.0	19	26.3	0		29	27.6
12	6	33.3	9	22.2	0		15	26.7
ALL	141	26.2	141	45.4	0		282	35.8

PERFORMANCE IN 2014

Grade 2013-14 (N Rated)	Domain:	Listening		Speaking		Writing		Reading		Composite	
	2014 Level	N	%	N	%	N	%	N	%	N	%
KN (416)	Beginning	215	51.7	275	66.1	378	90.9	358	86.1	347	83.4
	Intermediate	112	26.9	84	20.2	27	6.5	39	9.4	51	12.3
	Advanced	58	13.9	44	10.6	6	1.4	13	3.1	12	2.9
	Advanced High	31	7.5	13	3.1	5	1.2	6	1.4	6	1.4
1 (480)	Beginning	172	35.8	233	48.5	319	66.7	290	60.7	274	57.3
	Intermediate	153	31.9	127	26.5	88	18.4	99	20.7	114	23.8
	Advanced	85	17.7	69	14.4	37	7.7	48	10.0	51	10.7
	Advanced High	70	14.6	51	10.6	34	7.1	41	8.6	39	8.2
2 (438)	Beginning	45	10.4	79	18.3	126	29.6	114	26.1	85	20.0
	Intermediate	150	34.7	186	43.1	192	45.1	180	41.3	189	44.6
	Advanced	158	36.6	133	30.8	90	21.1	107	24.5	124	29.2
	Advanced High	79	18.3	34	7.9	18	4.2	35	8.0	26	6.1
3 (430)	Beginning	25	5.9	37	8.7	110	26.0	109	25.6	70	16.7
	Intermediate	119	28.0	147	34.6	175	41.4	118	27.7	140	33.4
	Advanced	184	43.3	168	39.5	101	23.9	112	26.3	142	33.9
	Advanced High	97	22.8	73	17.2	37	8.7	87	20.4	67	16.0
4 (423)	Beginning	24	5.7	36	8.6	68	16.1	73	17.3	44	10.5
	Intermediate	70	16.6	92	21.9	137	32.5	128	30.4	125	29.8
	Advanced	150	35.5	175	41.6	127	30.1	152	36.1	169	40.3
	Advanced High	178	42.2	118	28.0	90	21.3	68	16.2	81	19.3

**PROGRESSION FROM
2013 TO 2014**

Number Rated Both Years N (%) Progressed	2014 Level	2013 Level			
		Beg	Int	Adv	Adv High
-	Beginning	-			
	Intermediate	-	-		
	Advanced	-	-	-	
	Advanced High	-	-	-	
456 175 (38.4%)	Beginning	258			
	Intermediate	95	15		
	Advanced	36	6	8	
	Advanced High	27	4	7	
406 194 (47.8%)	Beginning	77			
	Intermediate	93	88		
	Advanced	31	44	47	
	Advanced High	3	6	17	
384 142 (37.0%)	Beginning	51			
	Intermediate	24	107		
	Advanced	3	50	84	
	Advanced High	0	3	62	
391 125 (32.0%)	Beginning	36			
	Intermediate	24	90		
	Advanced	1	20	140	
	Advanced High	0	0	80	

PERFORMANCE IN 2014

Grade 2013-14 (N Rated)	Domain:	Listening		Speaking		Writing		Reading		Composite	
	2014 Level	N	%	N	%	N	%	N	%	N	%
5 (435)	Beginning	21	4.9	27	6.3	45	10.5	46	10.6	27	6.3
	Intermediate	57	13.2	82	19.0	156	36.4	93	21.5	89	20.9
	Advanced	153	35.5	153	35.5	124	28.9	159	36.8	184	43.2
	Advanced High	200	46.4	169	39.2	104	24.2	134	31.0	126	29.6
6 (414)	Beginning	22	5.3	18	4.3	31	7.5	44	10.6	21	5.1
	Intermediate	86	20.8	96	23.2	161	38.9	133	32.1	127	30.7
	Advanced	190	45.9	186	44.9	138	33.3	159	38.4	165	39.9
	Advanced High	116	28.0	114	27.5	84	20.3	78	18.8	101	24.4
7 (311)	Beginning	4	1.3	6	1.9	9	2.9	26	8.4	6	2.0
	Intermediate	38	12.3	45	14.5	82	26.8	104	33.7	67	21.9
	Advanced	106	34.2	113	36.5	123	40.2	122	39.5	154	50.3
	Advanced High	162	52.3	146	47.1	92	30.1	57	18.4	79	25.8
8 (218)	Beginning	10	4.6	15	6.9	16	7.4	32	14.7	16	7.4
	Intermediate	20	9.2	20	9.2	32	14.8	52	23.9	30	13.9
	Advanced	77	35.5	75	34.6	100	46.3	101	46.3	110	50.9
	Advanced High	110	50.7	107	49.3	68	31.5	33	15.1	60	27.8
9 (268)	Beginning	27	11.3	28	11.7	45	18.8	34	13.4	19	8.4
	Intermediate	72	30.0	56	23.3	51	21.3	52	20.6	48	21.3
	Advanced	59	24.6	71	29.6	71	29.6	105	41.5	91	40.4
	Advanced High	82	34.2	85	35.4	73	30.4	62	24.5	67	29.8

**PROGRESSION FROM
2013 TO 2014**

Number Rated Both Years N (%) Progressed	2014 Level	2013 Level			
		Beg	Int	Adv	Adv High
394 190 (48.2%)	Beginning	18			
	Intermediate	22	64		
	Advanced	2	45	122	
	Advanced High	0	6	115	
376 105 (27.9%)	Beginning	13			
	Intermediate	5	110		
	Advanced	0	9	148	
	Advanced High	0	0	91	
272 97 (35.7%)	Beginning	3			
	Intermediate	6	51		
	Advanced	0	19	121	
	Advanced High	0	1	71	
176 65 (36.9%)	Beginning	5			
	Intermediate	5	18		
	Advanced	0	9	88	
	Advanced High	0	0	51	
159 63 (39.6%)	Beginning	4			
	Intermediate	7	25		
	Advanced	1	7	67	
	Advanced High	0	1	47	

PERFORMANCE IN 2014

Grade 2013-14 (N Rated)	Domain:	Listening		Speaking		Writing		Reading		Composite	
	2014 Level	N	%	N	%	N	%	N	%	N	%
10 (210)	Beginning	4	2.2	8	4.3	15	8.0	9	4.4	4	2.2
	Intermediate	59	31.7	41	22.0	51	27.3	43	21.0	28	15.5
	Advanced	63	33.9	78	41.9	80	42.8	100	48.8	103	56.9
	Advanced High	60	32.3	59	31.7	41	21.9	53	25.9	46	25.4
11 (154)	Beginning	0	0.0	0	0.0	4	2.9	4	2.7	1	0.7
	Intermediate	28	20.1	25	18.0	37	26.6	34	22.8	21	15.7
	Advanced	46	33.1	49	35.3	42	30.2	70	47.0	54	40.3
	Advanced High	65	46.8	65	46.8	56	40.3	41	27.5	58	43.3
12 (63)	Beginning	1	1.7	1	1.7	1	1.7	4	8.2	0	0.0
	Intermediate	5	8.5	7	11.9	13	22.0	12	24.5	7	15.6
	Advanced	23	39.0	24	40.7	28	47.5	24	49.0	22	48.9
	Advanced High	30	50.8	27	45.8	17	28.8	9	18.4	16	35.6
ALL (4,260)	Beginning	570	13.7	763	18.3	1,167	28.1	1,143	27.2	914	22.3
	Intermediate	969	23.2	1,008	24.2	1,202	28.9	1,087	25.8	1,036	25.2
	Advanced	1,352	32.4	1,338	32.1	1,067	25.7	1,272	30.2	1,381	33.7
	Advanced High	1,280	30.7	1,061	25.4	719	17.3	704	16.7	772	18.8

**PROGRESSION FROM
2013 TO 2014**

Number Rated Both Years N (%) Progressed	2014 Level	2013 Level			
		Beg	Int	Adv	Adv High
156 46 (29.5%)	Beginning	4			
	Intermediate	4	16		
	Advanced	0	5	90	
	Advanced High	0	1	36	
119 61 (51.3%)	Beginning	1			
	Intermediate	1	15		
	Advanced	1	8	42	
	Advanced High	0	0	51	
39 16 (41.0%)	Beginning	0			
	Intermediate	1	6		
	Advanced	0	2	17	
	Advanced High	0	1	12	
3,330 1,280 (38.4%)	Beginning	471			
	Intermediate	287	605		
	Advanced	75	224	974	
	Advanced High	31	23	640	

■ Indicates students who progressed at least one level from 2013 to 2014.