

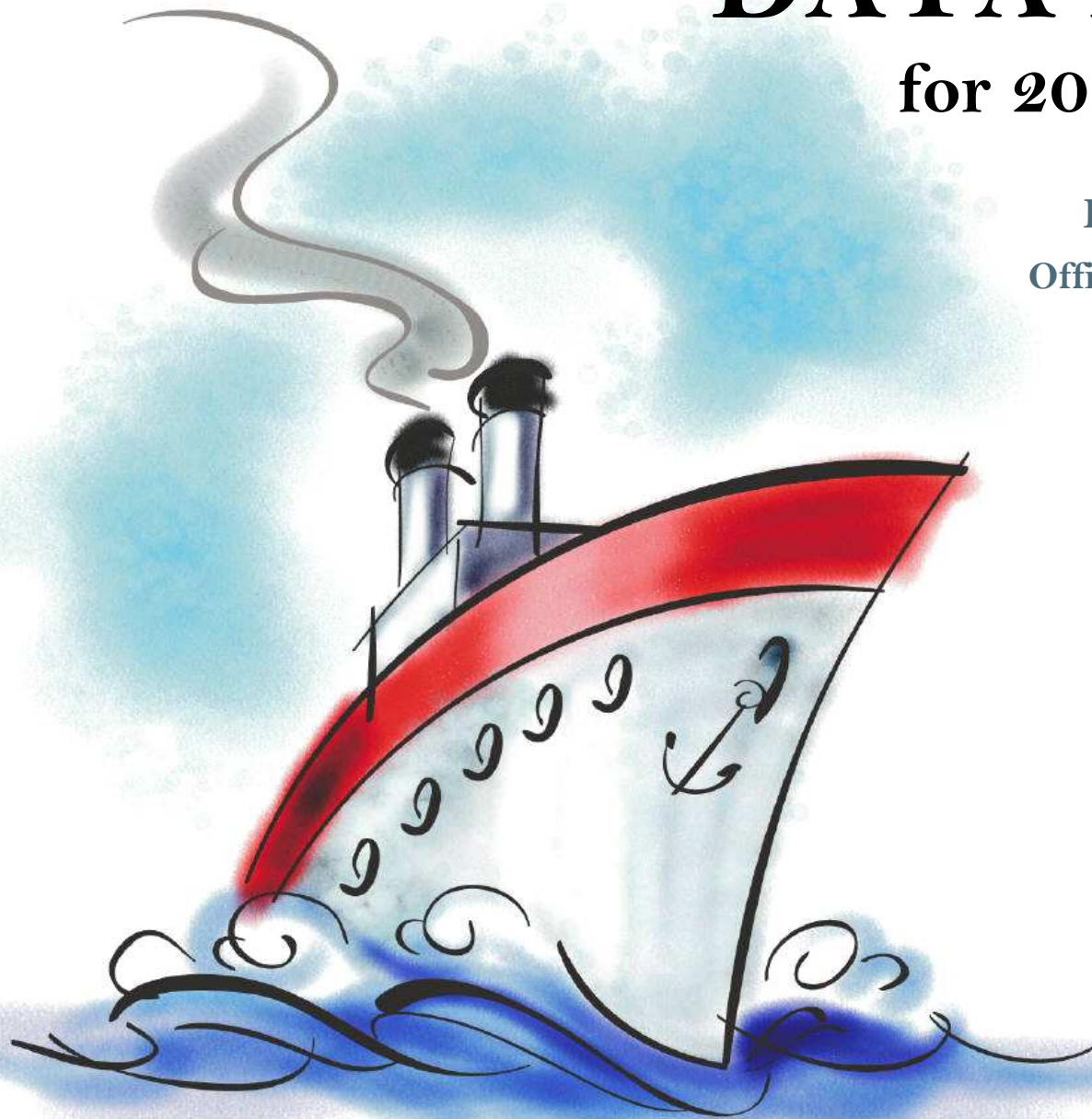
DATA PACKET

for 2014-15 planning

Evaluation & Assessment
Office of Institutional Research
<http://mydata.dallasisd.org>
OIR@dallasisd.org

September 8, 2014

**SEAGOVILLE
HIGH SCHOOL
FEEDER GROUP**



Dallas Independent School District

2. Contents Table of Contents

STUDENTS AND STAFF

- 5. Summary Summary of Student and Teacher Statistics
- 9. Enroll (2) Enrollment Statistics by Select Student Group
- 15. Teachers Teacher Statistics

STAAR (English)

- 16. Reading (3-8) STAAR 3-8 Reading in English
- 28. Writing (3-8) STAAR 3-8 Writing in English
- 43. Math (EOC) STAAR EOC Mathematics
- 54. Science (EOC) ... STAAR EOC Science
- 62. SS (EOC) STAAR EOC Social Studies

STAAR (Spanish)

- 66. Reading (3-8) STAAR 3-8 Reading in Spanish
- 74. Math (3-8) STAAR 3-8 Mathematics in Spanish

STAAR L

- 82. Math (3-8) STAAR L 3-8 Mathematics
- 94. Science (3-8) STAAR L 3-8 Science

STAAR M

- 105. Reading (3-8) STAAR M 3-8 Reading
- 117. Writing (3-8) STAAR M 3-8 Writing
- 132. Science (3-8) STAAR M 3-8 Science

ITBS/LOGRAMOS

- 143. Compliance SCE Compliance for At-Risk Students
- 146. Math ITBS Mathematics Subtests

ENGLISH PROFICIENCY

- 152. WMLS Woodcock-Muñoz Language Survey

3. Notes Notes and Data Descriptions

- 6. Enroll (1) Enrollment Statistics by Ethnicity
- 12. Attendance Student Attendance Statistics

- 24. Reading (EOC) .. STAAR EOC Reading
- 35. Math (3-8) STAAR 3-8 Mathematics in English
- 47. Science (3-8) STAAR 3-8 Science in English
- 58. SS (3-8) STAAR 3-8 Social Studies in English

- 70. Writing (3-8) STAAR 3-8 Writing in Spanish
- 78. Science (3-8) STAAR 3-8 Science in Spanish

- 90. Math (EOC) STAAR L EOC Mathematics
- 101. SS (3-8) STAAR L 3-8 Social Studies

- 113. Reading (EOC) .. STAAR M EOC Reading
- 124. Math (3-8) STAAR M 3-8 Mathematics
- 139. SS (3-8) STAAR M 3-8 Social Studies

- 144. Reading ITBS Reading Subtests
- 150. Reading Logramos Reading Subtests

- 153. TELPAS Texas English Language Proficiency Assessment System

2013-14 SCHOOL SUMMARY

- Student percentages are computed as the percentage of total student enrollment.
- Additional statistics are available in ENROLLMENT and TEACHER reports.
- Race/ethnic categories are based on the newest federal standards for ethnicity and race reporting, though some categories have been combined because of small group sizes. Students reporting their ethnicity as “Hispanic” are not counted in any race category.
- “Economically disadvantaged” students are those who qualify for free or reduced-price lunch through the federal government's program.
- Teacher demographics and assignments are from the district's Public Education Information Management System (PEIMS) submission to the TEA.

ENROLLMENT

- Statistics are based on the school's enrollment at the end of the fifth six-weeks grading period.
- “Economically disadvantaged” students are those receiving free or reduced-price lunches.
- “New” students were new to the district in 2013-14. They are counted as new if not enrolled in a district campus before the last day of the 2012-13 school year.
- The “retention rate” is the percentage of students in the same grade at the end of the fifth six-weeks grading period for both 2012-13 and 2013-14.

ATTENDANCE

- Statistics are based on student attendance through the end of the sixth six-weeks grading period (the end of the school year).
- “Average daily membership” is the total number of school days students were ENROLLED divided by the number of school days in the year.
- The “average daily attendance” number (N) is the total number of school days students were IN ATTENDANCE divided by the number of school days in the year. The “average daily attendance” percentage (%) is the average attendance rate. For each student, the number of days attended is divided by the number of days enrolled. This rate is then averaged across students.
- The number (N) of “yearly transactions” is the total number of transfer and withdrawal transactions in the school year. The percentage (%) is the number of transactions divided by “average daily membership,” which gives (on average) the percentage of the membership associated with a transaction.
- “Continuously enrolled” students are enrolled and in attendance for a minimum number of instructional days in at least one course at the school between the beginning of the school year and the first day of the main STAAR testing period. The minimum number varies depending on the school year's calendar, but is typically around 130 days.
- The “stability rate” is the number of continuously enrolled students divided by “average daily membership.”

TEACHERS

- Teacher demographics and assignments are from the district's Public Education Information Management System (PEIMS) submission to the TEA.
- Teacher absences counted towards the average DO NOT include vacation days (coded as VAC in personnel database).
- Retention rate for a school year is computed with numerator “# of teachers assigned to the school both that year and the year prior” and denominator “# of teachers assigned to the school for the prior year.” That is, the retention rate is the percentage of the prior year's teachers who continued at the school.

STAAR, STAAR L, and STAAR M

- Cells marked with an asterisk (*) indicate five or fewer students were tested. Blank cells indicate no students were tested.
- Student group assignments are from the district's Public Education Information Management System (PEIMS) submission to the TEA.
- STAAR statistics are based on results from standard STAAR only. STAAR L and STAAR M statistics are computed separately, following TEA reporting practice.
- “Percentage Satisfactory” is the percentage of students achieving Level 2 (Satisfactory) or Level 3 (Advanced).
- Statistics by reporting category are averages for all students (across student groups and genders).
- An “average percentage correct” is computed as follows: for each student, divide the number of items correctly answered by the total number of items in the test section, then average the resulting percentages across all students. For short answers on EOC English tests, an “average rating” is presented; STAAR EOC short answers are rated on a scale of 0 to 3. For written compositions on writing tests, “average score points” is presented. Additional details provided in report footnotes.
- Reading and mathematics statistics for SSI grades 5 and 8 are based on scores cumulative through the second administration. EOC statistics are based on first administration scores from the fall and spring administrations.
- Beginning in 2014, EOC Reading and EOC Writing tests were replaced with EOC English tests.

SCE COMPLIANCE and ITBS / ITED / LOGRAMOS

- Cells marked with an asterisk (*) indicate five or fewer students were tested. Blank cells indicate no students were tested.
- Student group assignments are based on demographic data in the Dallas ISD student database.
- Kindergarten ITBS reading statistics are based on the Reading Profile Total summary score. All other grades' ITBS reading statistics, and Logramos reading statistics for all grades, are based on the Reading Total summary score. (Reading Total values not available with use of the ITBS form administered in kindergarten.) “Number tested” statistics include kindergarten.
- Kindergarten ITBS mathematics statistics are based on the Mathematics subtest score. All other grades' statistics are based on the Mathematics Total summary score. (Mathematics Total values not available with use of the ITBS form administered in kindergarten.) “Number tested” statistics include kindergarten.
- Mathematics Total summary scores are combinations of the Mathematics Concepts, Problems, and Computation subtest results. For schools that did not administer Mathematics Concepts or Mathematics Problems subtests, Mathematics Computation statistics are provided separately.

TELPAS

- Students are counted as having tested if any one of the four domains is rated. Because a TELPAS composite rating is not assigned to a student unless all four domains are rated, the number of TELPAS composite ratings may be smaller than the number tested.
- If a student's composite rating did not increase at least one level from 2013 to 2014, the TEA did not report the 2013 composite rating.
- If a student is rated as advanced high in 2014, the TEA does not differentiate between the advanced and advanced high levels from 2013.

STUDENT ENROLLMENT

Grade	Enrollment
PK	278
KN	490
1	480
2	495
3	486
4	421
5	421
6	354
7	408
8	369
9	339
10	327
11	287
12	224
ALL	5,379

STUDENT AND TEACHER RACE/ETHNICITY

Ethnicity/Race	Students		Teachers	
	Number	Percent	Number	Percent
Black/African American	890	16.5	98	31.1
American Indian/Alaska Native	26	0.5	*	*
Asian/Hawaiian/Pacific Islander	10	0.2	*	*
Hispanic	3,519	65.4	74	23.5
White	873	16.2	126	40.0
Multiple	58	1.1	11	3.5
Other* (teachers only)	—	—	6	1.9
Not reported (students only)	0	0.0	—	—

*For teachers, "Other" category includes American Indian/Alaska Native and Asian/Hawaiian/Pacific Islander.

SELECT STUDENT GROUP ENROLLMENT

Group	Number	Percent
At-Risk	3,904	72.6
Economically disadvantaged	4,773	88.7
Limited English proficient (LEP)	2,105	39.1
Special education	484	9.0
Talented and Gifted (TAG)	505	9.4

Grade	Year	Enrollment	African American		American Indian		Asian		Hispanic		White		Multiple category	
			N	%	N	%	N	%	N	%	N	%	N	%
PK	2012	204	27	13.2	0	0.0	0	0.0	147	72.1	30	14.7	0	0.0
	2013	292	26	8.9	0	0.0	0	0.0	223	76.4	41	14.0	2	0.7
	2014	278	27	9.7	2	0.7	2	0.7	204	73.4	42	15.1	1	0.4
KN	2012	438	56	12.8	5	1.1	2	0.5	283	64.6	91	20.8	1	0.2
	2013	492	66	13.4	1	0.2	1	0.2	300	61.0	118	24.0	5	1.0
	2014	490	58	11.8	0	0.0	0	0.0	340	69.4	82	16.7	10	2.0
1	2012	455	67	14.7	0	0.0	0	0.0	302	66.4	86	18.9	0	0.0
	2013	481	66	13.7	5	1.0	3	0.6	318	66.1	85	17.7	3	0.6
	2014	480	68	14.2	1	0.2	1	0.2	306	63.8	97	20.2	7	1.5
2	2012	423	70	16.5	0	0.0	0	0.0	282	66.7	63	14.9	8	1.9
	2013	459	71	15.5	0	0.0	0	0.0	304	66.2	82	17.9	2	0.4
	2014	495	70	14.1	5	1.0	2	0.4	331	66.9	81	16.4	6	1.2
3	2012	383	70	18.3	1	0.3	1	0.3	242	63.2	64	16.7	5	1.3
	2013	425	76	17.9	0	0.0	0	0.0	275	64.7	64	15.1	10	2.4
	2014	486	71	14.6	0	0.0	1	0.2	330	67.9	82	16.9	2	0.4
4	2012	391	65	16.6	2	0.5	2	0.5	241	61.6	77	19.7	4	1.0
	2013	398	72	18.1	1	0.3	2	0.5	255	64.1	61	15.3	6	1.5
	2014	421	73	17.3	0	0.0	0	0.0	286	67.9	52	12.4	10	2.4
5	2012	406	84	20.7	3	0.7	0	0.0	245	60.3	70	17.2	4	1.0
	2013	374	58	15.5	2	0.5	1	0.3	240	64.2	71	19.0	2	0.5
	2014	421	78	18.5	1	0.2	2	0.5	280	66.5	56	13.3	4	1.0
PK-5	2012	2,700	439	16.3	11	0.4	5	0.2	1,742	64.5	481	17.8	22	0.8
	2013	2,921	435	14.9	9	0.3	7	0.2	1,915	65.6	522	17.9	30	1.0
	2014	3,071	445	14.5	9	0.3	8	0.3	2,077	67.6	492	16.0	40	1.3

Grade	Year	Enrollment	African American		American Indian		Asian		Hispanic		White		Multiple category	
			N	%	N	%	N	%	N	%	N	%	N	%
6	2012	307	67	21.8	1	0.3	1	0.3	163	53.1	73	23.8	1	0.3
	2013	382	74	19.4	1	0.3	0	0.0	242	63.4	63	16.5	2	0.5
	2014	354	60	16.9	4	1.1	0	0.0	235	66.4	53	15.0	0	0.0
7	2012	350	68	19.4	3	0.9	2	0.6	205	58.6	69	19.7	3	0.9
	2013	361	60	16.6	3	0.8	0	0.0	228	63.2	69	19.1	1	0.3
	2014	408	83	20.3	2	0.5	0	0.0	265	65.0	56	13.7	2	0.5
8	2012	347	62	17.9	2	0.6	0	0.0	209	60.2	69	19.9	3	0.9
	2013	330	60	18.2	3	0.9	1	0.3	204	61.8	57	17.3	3	0.9
	2014	369	65	17.6	7	1.9	0	0.0	229	62.1	68	18.4	0	0.0
6-8	2012	1,004	197	19.6	6	0.6	3	0.3	577	57.5	211	21.0	7	0.7
	2013	1,073	194	18.1	7	0.7	1	0.1	674	62.8	189	17.6	6	0.6
	2014	1,131	208	18.4	13	1.1	0	0.0	729	64.5	177	15.6	2	0.2

Grade	Year	Enrollment	African American		American Indian		Asian		Hispanic		White		Multiple category	
			N	%	N	%	N	%	N	%	N	%	N	%
9	2012	324	69	21.3	0	0.0	0	0.0	189	58.3	64	19.8	2	0.6
	2013	345	61	17.7	3	0.9	0	0.0	213	61.7	63	18.3	4	1.2
	2014	339	62	18.3	1	0.3	1	0.3	212	62.5	57	16.8	6	1.8
10	2012	256	65	25.4	1	0.4	1	0.4	137	53.5	49	19.1	1	0.4
	2013	288	64	22.2	0	0.0	0	0.0	171	59.4	51	17.7	2	0.7
	2014	327	55	16.8	2	0.6	0	0.0	206	63.0	57	17.4	7	2.1
11	2012	203	35	17.2	3	1.5	1	0.5	110	54.2	53	26.1	0	0.0
	2013	245	57	23.3	1	0.4	1	0.4	130	53.1	52	21.2	3	1.2
	2014	287	63	22.0	0	0.0	0	0.0	175	61.0	48	16.7	1	0.3
12	2012	213	48	22.5	1	0.5	1	0.5	116	54.5	46	21.6	1	0.5
	2013	216	40	18.5	2	0.9	1	0.5	116	53.7	56	25.9	0	0.0
	2014	224	57	25.4	1	0.4	1	0.4	120	53.6	42	18.8	2	0.9
9-12	2012	996	217	21.8	5	0.5	3	0.3	552	55.4	212	21.3	4	0.4
	2013	1,094	222	20.3	6	0.5	2	0.2	630	57.6	222	20.3	9	0.8
	2014	1,177	237	20.1	4	0.3	2	0.2	713	60.6	204	17.3	16	1.4
ALL	2012	4,700	853	18.1	22	0.5	11	0.2	2,871	61.1	904	19.2	33	0.7
	2013	5,088	851	16.7	22	0.4	10	0.2	3,219	63.3	933	18.3	45	0.9
	2014	5,379	890	16.5	26	0.5	10	0.2	3,519	65.4	873	16.2	58	1.1

Grade	Year	Enrollment	Economically Disadvantaged		LEP		Special Education		At Risk		TAG		New (to District)		Gender		Retention Rate (%)
			N	%	N	%	N	%	N	%	N	%	N	%	% Male	% Female	
PK	2012	204	199	97.5	121	59.3	6	2.9	123	60.3	0	0.0	204	100.0	50.0	50.0	0.0
	2013	292	282	96.6	169	57.9	20	6.8	172	58.9	0	0.0	285	97.6	51.7	48.3	0.3
	2014	278	265	95.3	164	59.0	14	5.0	168	60.4	0	0.0	273	98.2	48.9	51.1	0.4
KN	2012	438	402	91.8	211	48.2	19	4.3	216	49.3	0	0.0	186	42.5	49.5	50.5	1.4
	2013	492	450	91.5	207	42.1	23	4.7	217	44.1	26	5.3	267	54.3	50.6	49.4	2.2
	2014	490	434	88.6	222	45.3	32	6.5	235	48.0	13	2.7	191	39.0	54.3	45.7	2.0
1	2012	455	424	93.2	215	47.3	22	4.8	243	53.4	6	1.3	47	10.3	49.7	50.3	4.8
	2013	481	440	91.5	237	49.3	32	6.7	255	53.0	54	11.2	67	13.9	50.7	49.3	4.0
	2014	480	435	90.6	204	42.5	27	5.6	223	46.5	57	11.9	48	10.0	49.6	50.4	2.5
2	2012	423	378	89.4	203	48.0	26	6.1	301	71.2	29	6.9	48	11.3	49.4	50.6	1.2
	2013	459	433	94.3	218	47.5	21	4.6	317	69.1	42	9.2	51	11.1	46.2	53.8	2.6
	2014	495	448	90.5	247	49.9	38	7.7	358	72.3	77	15.6	53	10.7	49.9	50.1	3.0
3	2012	383	356	93.0	164	42.8	36	9.4	291	76.0	45	11.7	45	11.7	51.4	48.6	1.0
	2013	425	381	89.6	191	44.9	31	7.3	295	69.4	55	12.9	55	12.9	52.9	47.1	0.5
	2014	486	445	91.6	235	48.4	29	6.0	360	74.1	59	12.1	60	12.3	44.9	55.1	0.8
4	2012	391	363	92.8	173	44.2	31	7.9	294	75.2	49	12.5	49	12.5	54.5	45.5	0.8
	2013	398	366	92.0	173	43.5	34	8.5	291	73.1	44	11.1	43	10.8	52.8	47.2	0.3
	2014	421	367	87.2	193	45.8	42	10.0	326	77.4	54	12.8	45	10.7	52.7	47.3	1.2
5	2012	406	378	93.1	159	39.2	32	7.9	304	74.9	72	17.7	41	10.1	50.5	49.5	1.2
	2013	374	356	95.2	171	45.7	44	11.8	277	74.1	46	12.3	29	7.8	53.7	46.3	0.5
	2014	421	383	91.0	182	43.2	49	11.6	354	84.1	45	10.7	41	9.7	54.6	45.4	2.6
PK-5	2012	2,700	2,500	92.6	1,246	46.1	172	6.4	1,772	65.6	201	7.4	620	23.0	50.7	49.3	1.7
	2013	2,921	2,708	92.7	1,366	46.8	205	7.0	1,824	62.4	267	9.1	797	27.3	51.1	48.9	1.6
	2014	3,071	2,777	90.4	1,447	47.1	231	7.5	2,024	65.9	305	9.9	711	23.2	50.7	49.3	1.9

Grade	Year	Enrollment	Economically Disadvantaged		LEP		Special Education		At Risk		TAG		New (to District)		Gender		Retention Rate (%)
			N	%	N	%	N	%	N	%	N	%	N	%	% Male	% Female	
6	2012	307	273	88.9	97	31.6	32	10.4	187	60.9	38	12.4	28	9.1	52.8	47.2	1.6
	2013	382	360	94.2	137	35.9	29	7.6	276	72.3	50	13.1	44	11.5	52.4	47.6	0.5
	2014	354	318	89.8	155	43.8	44	12.4	302	85.3	31	8.8	37	10.5	56.2	43.8	0.0
7	2012	350	307	87.7	85	24.3	36	10.3	230	65.7	38	10.9	37	10.6	48.9	51.1	1.1
	2013	361	325	90.0	127	35.2	38	10.5	249	69.0	32	8.9	43	11.9	55.7	44.3	1.9
	2014	408	373	91.4	147	36.0	28	6.9	353	86.5	39	9.6	38	9.3	51.2	48.8	1.2
8	2012	347	297	85.6	67	19.3	47	13.5	212	61.1	30	8.6	34	9.8	49.9	50.1	1.4
	2013	330	296	89.7	84	25.5	38	11.5	221	67.0	33	10.0	36	10.9	48.5	51.5	1.5
	2014	369	314	85.1	99	26.8	38	10.3	284	77.0	29	7.9	48	13.0	53.4	46.6	0.5
6-8	2012	1,004	877	87.4	249	24.8	115	11.5	629	62.6	106	10.6	99	9.9	50.4	49.6	1.4
	2013	1,073	981	91.4	348	32.4	105	9.8	746	69.5	115	10.7	123	11.5	52.3	47.7	1.3
	2014	1,131	1,005	88.9	401	35.5	110	9.7	939	83.0	99	8.8	123	10.9	53.5	46.5	0.6

Grade	Year	Enrollment	Economically Disadvantaged		LEP		Special Education		At Risk		TAG		New (to District)		Gender		Retention Rate (%)
			N	%	N	%	N	%	N	%	N	%	N	%	% Male	% Female	
9	2012	324	273	84.3	68	21.0	40	12.3	224	69.1	45	13.9	36	11.1	48.1	51.9	4.3
	2013	345	300	87.0	78	22.6	54	15.7	235	68.1	23	6.7	48	13.9	55.4	44.6	3.2
	2014	339	284	83.8	89	26.3	35	10.3	270	79.6	25	7.4	51	15.0	49.6	50.4	2.1
10	2012	256	214	83.6	46	18.0	37	14.5	195	76.2	16	6.3	28	10.9	51.2	48.8	1.6
	2013	288	235	81.6	52	18.1	36	12.5	197	68.4	39	13.5	22	7.6	47.9	52.1	0.3
	2014	327	282	86.2	72	22.0	39	11.9	268	82.0	23	7.0	32	9.8	53.5	46.5	1.8
11	2012	203	156	76.8	23	11.3	24	11.8	142	70.0	30	14.8	20	9.9	55.7	44.3	0.5
	2013	245	199	81.2	46	18.8	34	13.9	193	78.8	19	7.8	16	6.5	51.8	48.2	0.8
	2014	287	237	82.6	55	19.2	37	12.9	226	78.7	37	12.9	18	6.3	49.8	50.2	1.4
12	2012	213	170	79.8	41	19.2	32	15.0	173	81.2	22	10.3	13	6.1	52.6	47.4	5.6
	2013	216	166	76.9	26	12.0	36	16.7	157	72.7	27	12.5	12	5.6	55.1	44.9	6.0
	2014	224	188	83.9	41	18.3	32	14.3	177	79.0	16	7.1	9	4.0	53.1	46.9	2.7
9-12	2012	996	813	81.6	178	17.9	133	13.4	734	73.7	113	11.3	97	9.7	51.4	48.6	3.1
	2013	1,094	900	82.3	202	18.5	160	14.6	782	71.5	108	9.9	98	9.0	52.6	47.4	2.5
	2014	1,177	991	84.2	257	21.8	143	12.1	941	79.9	101	8.6	110	9.3	51.4	48.6	2.0
ALL	2012	4,700	4,190	89.1	1,673	35.6	420	8.9	3,135	66.7	420	8.9	816	17.4	50.8	49.2	1.9
	2013	5,088	4,589	90.2	1,916	37.7	470	9.2	3,352	65.9	490	9.6	1,018	20.0	51.7	48.3	1.7
	2014	5,379	4,773	88.7	2,105	39.1	484	9.0	3,904	72.6	505	9.4	944	17.5	51.4	48.6	1.6

Grade	Year	Average Daily Membership		Average Daily Attendance				Yearly Transactions			Continuously Enrolled		Stability Rate	
		N	District	N	%	District N	District %	N	%	District %	N	District	%	District
KN	2012	435	13,633	415	95.4	13,086	96.0	50	11.5	19.9	370	11,731	85.0	86.0
	2013	493	14,067	469	95.1	13,411	95.3	89	18.0	20.0	425	12,178	86.2	86.6
	2014	485	13,618	467	96.3	13,058	95.9	91	18.8	19.8	415	11,271	85.5	82.8
1	2012	453	14,026	437	96.5	13,533	96.5	61	13.5	18.3	397	12,292	87.7	87.6
	2013	481	14,140	461	96.0	13,578	96.0	79	16.4	18.7	421	12,528	87.6	88.6
	2014	481	14,262	463	96.3	13,732	96.3	87	18.1	19.2	411	12,149	85.5	85.2
2	2012	418	13,338	405	97.0	12,932	97.0	54	12.9	16.8	372	11,883	89.1	89.1
	2013	459	13,555	443	96.5	13,077	96.5	79	17.2	17.1	417	12,206	90.9	90.0
	2014	494	13,652	478	96.8	13,209	96.8	85	17.2	17.0	435	11,868	88.1	86.9
3	2012	377	12,874	366	97.1	12,508	97.2	43	11.4	15.5	341	11,592	90.5	90.0
	2013	422	12,879	408	96.6	12,466	96.8	90	21.3	15.9	374	11,710	88.6	90.9
	2014	485	13,159	472	97.2	12,763	97.0	95	19.6	17.3	418	11,491	86.2	87.3
4	2012	393	12,493	381	97.1	12,139	97.2	42	10.7	16.6	343	11,218	87.4	89.8
	2013	401	12,406	389	96.8	12,029	97.0	72	17.9	16.5	365	11,339	90.9	91.4
	2014	418	12,543	406	97.1	12,180	97.1	80	19.1	16.3	366	11,075	87.6	88.3
5	2012	402	12,562	389	96.9	12,220	97.3	8	2.0	5.3	357	11,364	88.9	90.5
	2013	380	12,053	368	96.7	11,696	97.0	23	6.0	6.2	353	11,075	92.8	91.9
	2014	423	12,130	410	97.1	11,795	97.2	25	5.9	5.4	382	10,790	90.4	89.0
KN-5	2012	2,477	78,926	2,393	96.6	76,419	96.8	258	10.4	15.5	2,180	70,080	88.0	88.8
	2013	2,636	79,100	2,537	96.2	76,255	96.4	432	16.4	16.0	2,355	71,036	89.3	89.8
	2014	2,786	79,365	2,696	96.8	76,736	96.7	463	16.6	16.0	2,427	68,644	87.1	86.5

Grade	Year	Average Daily Membership		Average Daily Attendance				Yearly Transactions			Continuously Enrolled		Stability Rate	
		N	District	N	%	District N	District %	N	%	District %	N	District	%	District
6	2012	308	10,683	296	96.3	10,315	96.6	55	17.9	17.6	273	9,420	88.7	88.2
	2013	383	11,463	367	95.8	11,062	96.5	68	17.8	21.1	341	10,320	89.0	90.0
	2014	348	10,808	337	97.0	10,413	96.3	47	13.5	20.0	311	9,554	89.5	88.4
7	2012	351	10,204	333	95.1	9,727	95.3	85	24.2	23.8	277	8,576	79.0	84.0
	2013	367	10,542	351	95.5	10,116	96.0	75	20.4	24.5	311	9,357	84.8	88.8
	2014	405	11,195	390	96.1	10,729	95.8	64	15.8	22.1	362	9,852	89.3	88.0
8	2012	351	10,369	335	95.6	9,838	94.9	30	8.5	15.5	304	8,711	86.6	84.0
	2013	332	9,955	316	95.2	9,486	95.3	33	9.9	17.6	283	8,664	85.1	87.0
	2014	361	10,449	348	96.3	9,970	95.4	25	6.9	13.1	320	9,097	88.6	87.1
6-8	2012	1,009	31,256	965	95.6	29,880	95.6	170	16.8	18.9	854	26,707	84.6	85.4
	2013	1,082	31,960	1,034	95.5	30,665	96.0	176	16.3	21.1	935	28,341	86.4	88.7
	2014	1,114	32,451	1,074	96.4	31,112	95.9	136	12.2	18.5	993	28,503	89.1	87.8

Grade	Year	Average Daily Membership		Average Daily Attendance				Yearly Transactions			Continuously Enrolled		Stability Rate	
		N	District	N	%	District N	District %	N	%	District %	N	District	%	District
9	2012	330	10,922	304	92.1	10,196	93.3	64	19.4	27.8	258	8,726	78.1	79.9
	2013	343	11,153	327	95.2	10,499	94.1	96	28.0	28.3	299	9,388	87.2	84.2
	2014	343	10,850	327	95.6	10,242	94.4	87	25.4	28.4	283	9,091	82.6	83.8
10	2012	260	9,007	237	91.4	8,431	93.6	78	30.0	20.6	179	7,332	68.9	81.4
	2013	295	9,331	283	95.8	8,812	94.4	64	21.7	20.5	256	8,042	86.8	86.2
	2014	333	9,898	317	95.4	9,367	94.6	68	20.4	20.3	283	8,628	85.1	87.2
11	2012	211	8,913	193	91.7	8,306	93.2	38	18.0	15.9	154	7,319	73.0	82.1
	2013	254	8,457	240	94.4	7,949	94.0	55	21.6	18.9	222	7,295	87.4	86.3
	2014	293	8,467	280	95.4	8,005	94.5	36	12.3	18.1	266	7,476	90.7	88.3
12	2012	220	8,178	201	91.5	7,571	92.6	28	12.8	12.6	161	6,742	73.3	82.4
	2013	208	8,199	199	95.6	7,661	93.4	26	12.5	14.9	194	7,269	93.2	88.7
	2014	231	7,886	217	94.0	7,407	93.9	32	13.8	15.2	206	7,027	89.1	89.1
9-12	2012	1,021	37,021	936	91.7	34,504	93.2	208	20.4	19.8	752	30,119	73.7	81.4
	2013	1,100	37,140	1,048	95.3	34,922	94.0	241	21.9	21.2	971	31,994	88.3	86.1
	2014	1,200	37,101	1,142	95.2	35,021	94.4	223	18.6	21.1	1,038	32,222	86.5	86.8

Teachers: 315

DISTRIBUTIONS

Ethnicity/Race	Number	Percentage
African American	98	31.1
Hispanic	74	23.5
White	126	40.0
Multiple	11	3.5
Other	6	1.9

Gender	Number	Percentage
Female	220	69.8
Male	95	30.2

ATTENDANCE / RETENTION

	Average Absences	Retention Rate
2011-12	7.3	—
2012-13	7.4	62.6
2013-14	7.1	64.3

YEARS EXPERIENCE

Years	Number	Percentage
Beginning (0)	51	16.2
1	24	7.6
2	16	5.1
3	11	3.5
4	14	4.4
5	21	6.7
1-3	51	16.2
More than 3	213	67.6
1 - 5	86	27.3
6 - 10	67	21.3
11 - 20	67	21.3
More than 20	44	14.0

PERCENTAGE SATISFACTORY (Levels 2 or 3)

Grade	Year	White	African Amer	Hispanic	Econ Disadv	Special Educ	LEP	At Risk	Migrant	Male	Female	All	District	Number Tested (All Students)
3	2012	73.2	61.5	63.1	65.4	27.3	72.4	49.2		61.9	68.8	65.2	63.6	230
	2013	74.6	69.7	66.0	72.5	30.8	66.7	50.0		71.9	68.2	70.2	67.8	245
	2014	74.7	62.5	59.5	63.1	45.5	59.3	51.5		61.9	66.9	64.7	61.7	266
4	2012	72.7	63.8	64.5	65.1	41.2	54.8	45.4		63.2	72.4	67.5	64.3	249
	2013	70.7	60.0	57.1	60.6	30.0	67.6	56.9		61.9	60.0	61.0	62.3	254
	2014	66.7	53.5	58.6	58.3	36.4	57.1	41.7		63.6	55.6	60.1	59.4	228
5	2012	66.2	66.2	69.7	65.8	46.7	69.7	53.9		62.7	74.1	68.3	68.0	293
	2013	87.5	74.5	80.1	81.3	31.3	78.7	71.5		76.2	87.3	81.4	81.5	269
	2014	83.3	68.6	83.3	80.0	44.4	80.7	74.8	*	82.3	76.7	79.7	78.5	291
3-5	2012	70.6	64.0	66.2	65.5	39.5	66.0	50.1		62.6	72.0	67.1	65.5	772
	2013	78.2	67.5	68.6	71.9	30.8	73.8	61.2		70.0	72.4	71.1	71.1	768
	2014	74.9	61.5	69.8	68.2	41.9	72.5	59.5	*	70.4	67.4	68.9	66.7	785

NUMBER TESTED IN GRADES 3-5													
2012	201	200	352	686	43	147	367			401	371	772	22,173
2013	193	197	357	672	39	130	286			417	351	768	21,619
2014	175	213	378	672	31	131	462	1		405	380	785	21,304

PERCENTAGE SATISFACTORY (Levels 2 or 3)

Grade	Year	White	African Amer	Hispanic	Econ Disadv	Special Educ	LEP	At Risk	Migrant	Male	Female	All	District	Number Tested (All Students)
6	2012	70.8	70.6	67.9	67.6	11.8	59.8	58.2		69.3	69.3	69.3	63.5	293
	2013	69.8	58.3	58.5	59.7	25.0	47.4	44.5		55.7	66.3	60.8	57.7	372
	2014	69.2	57.9	61.2	60.3	9.1	57.7	52.8		57.1	68.9	62.3	63.1	342
7	2012	67.2	66.7	63.8	61.9	12.0	52.5	49.4		59.8	71.4	65.8	67.5	339
	2013	69.1	57.6	63.5	62.8	31.4	52.3	47.4		57.7	70.4	63.2	67.3	361
	2014	82.0	66.7	64.6	67.0	17.6	51.7	57.2	*	60.8	73.6	67.2	60.5	387
8	2012	80.0	62.7	70.0	68.8	31.0	41.7	54.7		67.3	74.2	70.7	71.3	328
	2013	80.7	70.0	79.2	76.6	35.3	64.9	65.3		71.8	83.5	77.9	82.7	326
	2014	86.2	71.4	87.1	84.3	46.2	78.8	78.7		81.1	86.7	83.7	81.5	356
6-8	2012	72.5	66.8	67.2	65.9	19.7	52.6	53.9		65.4	71.8	68.5	67.4	960
	2013	72.9	61.8	66.6	65.8	31.5	53.2	51.9		61.0	73.4	66.9	68.6	1,059
	2014	79.6	65.6	70.6	70.4	23.7	60.9	62.4	*	66.3	76.5	71.1	68.2	1,085

NUMBER TESTED IN GRADES 6-8													
2012	189	193	558	834	71	232	501			482	478	960	29,211
2013	188	191	658	959	89	340	580			551	507	1,059	29,692
2014	167	195	708	954	76	391	768	1		575	510	1,085	30,015

NUMBER UNSATISFACTORY (Level 1)

Grade	Year	White	African Amer	Hispanic	Econ Disadv	Special Educ	LEP	At Risk	Migrant	Male	Female	All	District	Number Tested (All Students)
3	2012	15	25	38	71	8	8	60		45	35	80	2,466	230
	2013	16	23	33	55	9	6	49		38	35	73	2,181	245
	2014	20	27	45	83	6	11	64		45	49	94	2,649	266
4	2012	21	21	38	76	10	19	53		49	32	81	2,529	249
	2013	17	28	51	87	7	12	25		53	46	99	2,581	254
	2014	16	33	41	80	7	9	70		47	44	91	2,858	228
5	2012	23	26	43	90	8	23	70		56	37	93	2,665	293
	2013	9	13	28	47	11	16	37		34	16	50	1,484	269
	2014	8	22	28	51	5	16	53	*	28	31	59	1,582	291
3-5	2012	59	72	119	237	26	50	183		150	104	254	7,660	772
	2013	42	64	112	189	27	34	111		125	97	222	6,246	768
	2014	44	82	114	214	18	36	187	*	120	124	244	7,089	785

NUMBER TESTED IN GRADES 3-5													
2012	201	200	352	686	43	147	367			401	371	772	22,173
2013	193	197	357	672	39	130	286			417	351	768	21,619
2014	175	213	378	672	31	131	462	1		405	380	785	21,304

NUMBER UNSATISFACTORY (Level 1)

Grade	Year	White	African Amer	Hispanic	Econ Disadv	Special Educ	LEP	At Risk	Migrant	Male	Female	All	District	Number Tested (All Students)
6	2012	19	20	50	84	15	37	64		47	43	90	3,673	293
	2013	19	30	97	141	15	70	106		86	60	146	4,523	372
	2014	16	24	88	119	30	63	118		82	47	129	3,679	342
7	2012	21	22	72	114	22	38	90		66	50	116	3,070	339
	2013	21	25	81	120	24	62	112		85	47	133	3,215	361
	2014	9	25	91	115	14	69	121	*	76	51	127	4,075	387
8	2012	12	22	61	86	20	35	77		54	42	96	2,786	328
	2013	11	18	42	67	22	27	61		44	28	72	1,586	326
	2014	9	18	29	48	14	21	50		36	22	58	1,797	356
6-8	2012	52	64	183	284	57	110	231		167	135	302	9,529	960
	2013	51	73	220	328	61	159	279		215	135	351	9,324	1,059
	2014	34	67	208	282	58	153	289	*	194	120	314	9,551	1,085

NUMBER TESTED IN GRADES 6-8													
2012	189	193	558	834	71	232	501			482	478	960	29,211
2013	188	191	658	959	89	340	580			551	507	1,059	29,692
2014	167	195	708	954	76	391	768	1		575	510	1,085	30,015

PERCENTAGE ADVANCED (Level 3)

Grade	Year	White	African Amer	Hispanic	Econ Disadv	Special Educ	LEP	At Risk	Migrant	Male	Female	All	District	Number Tested (All Students)
3	2012	14.3	12.3	12.6	11.7	0.0	10.3	2.5		13.6	11.6	12.6	12.6	230
	2013	20.6	6.6	9.3	12.0	0.0	5.6	2.0		15.6	9.1	12.7	13.6	245
	2014	10.1	6.9	5.4	6.2	0.0	3.7	1.5		5.9	8.8	7.5	9.6	266
4	2012	14.3	10.3	10.3	10.6	11.8	2.4	2.1		10.5	12.1	11.2	11.2	249
	2013	17.2	4.3	10.9	9.0	0.0	16.2	12.1		10.8	9.6	10.2	13.5	254
	2014	8.3	1.4	8.1	4.7	0.0	14.3	5.0		5.4	7.1	6.1	12.0	228
5	2012	10.3	6.5	7.7	6.8	0.0	6.6	3.3		9.3	6.3	7.8	11.1	293
	2013	15.3	7.8	12.8	12.4	0.0	6.7	4.6		9.8	15.9	12.6	13.3	269
	2014	14.6	10.0	10.7	11.0	0.0	10.8	6.2	*	12.0	10.5	11.3	11.5	291
3-5	2012	12.9	9.5	9.9	9.5	4.7	6.1	2.7		11.0	9.7	10.4	11.6	772
	2013	17.6	6.1	11.2	11.2	0.0	9.2	5.2		12.0	11.7	11.8	13.5	768
	2014	10.9	6.1	8.5	7.6	0.0	9.9	4.5	*	8.1	8.9	8.5	11.1	785

NUMBER TESTED IN GRADE 3-5													
2012	201	200	352	686	43	147	367			401	371	772	22,173
2013	193	197	357	672	39	130	286			417	351	768	21,619
2014	175	213	378	672	31	131	462	1		405	380	785	21,304

PERCENTAGE ADVANCED (Level 3)

Grade	Year	White	African Amer	Hispanic	Econ Disadv	Special Educ	LEP	At Risk	Migrant	Male	Female	All	District	Number Tested (All Students)
6	2012	13.8	1.5	6.4	6.6	0.0	2.2	1.3		5.9	7.9	6.8	8.3	293
	2013	9.5	5.6	12.0	10.0	0.0	3.0	3.1		10.3	10.1	10.2	11.3	372
	2014	7.7	7.0	2.2	3.3	0.0	1.3	0.8		3.1	4.6	3.8	7.1	342
7	2012	10.9	9.1	5.5	6.4	0.0	3.8	3.9		3.0	11.4	7.4	10.3	339
	2013	11.8	6.8	3.2	5.0	0.0	0.0	0.5		5.5	5.0	5.3	8.7	361
	2014	8.0	8.0	5.8	6.3	0.0	2.8	3.5	*	7.7	5.7	6.7	10.0	387
8	2012	10.0	1.7	4.4	4.7	3.4	1.7	1.8		4.8	4.9	4.9	9.9	328
	2013	10.5	6.7	11.9	10.5	0.0	5.2	2.3		7.1	13.5	10.4	15.5	326
	2014	23.1	11.1	9.8	11.4	0.0	1.0	2.6		6.8	18.7	12.4	13.1	356
6-8	2012	11.6	4.1	5.4	5.9	1.4	2.6	2.4		4.6	8.2	6.4	9.5	960
	2013	10.6	6.3	9.0	8.4	0.0	2.4	1.9		7.6	9.7	8.6	11.7	1,059
	2014	13.8	8.7	5.9	7.0	0.0	1.8	2.3	*	5.9	9.6	7.6	10.1	1,085

NUMBER TESTED IN GRADE 6-8													
2012	189	193	558	834	71	232	501			482	478	960	29,211
2013	188	191	658	959	89	340	580			551	507	1,059	29,692
2014	167	195	708	954	76	391	768	1		575	510	1,085	30,015

AVERAGE PERCENTAGE OF ITEMS CORRECT BY REPORTING CATEGORY

Grade	Year	REPORTING CATEGORY		
		1. Understanding Across Genres (GR 3-5) 1. Understanding/Analysis Across Genres (GR 6-8)	2. Understanding/Analysis of Literary Texts	3. Understanding/Analysis of Informational Texts
3	2012	62.4	54.2	61.2
	2013	62.6	58.6	60.4
	2014	65.1	60.7	57.1
4	2012	62.6	60.4	59.5
	2013	66.5	58.9	57.9
	2014	60.1	59.2	55.6
5	2012	64.3	57.2	67.3
	2013	67.8	66.0	65.9
	2014	66.2	63.6	66.7
3-5	2012	63.2	57.3	62.9
	2013	65.7	61.3	61.5
	2014	64.0	61.3	60.2

AVERAGE PERCENTAGE OF ITEMS CORRECT BY REPORTING CATEGORY

Grade	Year	REPORTING CATEGORY		
		1. Understanding Across Genres (GR 3-5) 1. Understanding/Analysis Across Genres (GR 6-8)	2. Understanding/Analysis of Literary Texts	3. Understanding/Analysis of Informational Texts
6	2012	68.9	63.4	58.1
	2013	63.2	61.4	57.2
	2014	60.2	56.8	56.8
7	2012	65.6	56.9	60.3
	2013	56.6	56.1	63.4
	2014	63.3	57.9	56.0
8	2012	67.4	60.1	60.6
	2013	65.4	65.6	58.4
	2014	67.8	65.3	61.9
6-8	2012	67.2	60.0	59.7
	2013	61.6	60.9	59.7
	2014	63.8	60.0	58.2

PERCENTAGE SATISFACTORY (Levels 2 and 3)

Test	Year	White	African Amer	Hispanic	Econ Disadv	Special Educ	LEP	At Risk	Migrant	Male	Female	All	District
ENGLISH I	2012												
	2013												
	2014	45.6	42.4	38.1	38.1	10.1	22.3	29.3		31.9	48.6	39.8	50.9
Tests Taken	2012												
	2013												
	2014	79	99	344	431	69	148	427		282	251	533	13,789
ENGLISH II	2012												
	2013												
	2014	54.4	32.8	43.1	40.6	12.2	23.5	32.2		38.8	50.0	44.0	54.8
Tests Taken	2012												
	2013												
	2014	68	64	246	298	41	81	292		206	180	386	10,943

NUMBER UNSATISFACTORY (Level 1)

Test	Year	White	African Amer	Hispanic	Econ Disadv	Special Educ	LEP	At Risk	Migrant	Male	Female	All	District
ENGLISH I	2012												
	2013												
	2014	43	57	213	267	62	115	302		192	129	321	6,774
Tests Taken	2012												
	2013												
	2014	79	99	344	431	69	148	427		282	251	533	13,789
ENGLISH II	2012												
	2013												
	2014	31	43	140	177	36	62	198		126	90	216	4,948
Tests Taken	2012												
	2013												
	2014	68	64	246	298	41	81	292		206	180	386	10,943

PERCENTAGE ADVANCED (Level 3)

Test	Year	White	African Amer	Hispanic	Econ Disadv	Special Educ	LEP	At Risk	Migrant	Male	Female	All	District
ENGLISH I	2012												
	2013												
	2014	0.0	1.0	0.9	0.9	0.0	0.0	0.0		0.0	1.6	0.8	3.2
Tests Taken	2012												
	2013												
	2014	79	99	344	431	69	148	427		282	251	533	13,789
ENGLISH II	2012												
	2013												
	2014	2.9	0.0	0.8	1.0	0.0	0.0	0.0		1.0	1.1	1.0	2.7
Tests Taken	2012												
	2013												
	2014	68	64	246	298	41	81	292		206	180	386	10,943

AVERAGE PERCENTAGE OF ITEMS CORRECT BY REPORTING CATEGORY

ENGLISH I	1. Understanding & Analysis Across Genres	1. Average Rating Short Answer #1 ¹	1. Average Rating Short Answer #2 ¹	2. Understanding & Analysis of Literary Texts	3. Understanding & Analysis of Informational Texts	4. Expository Composition ²	5. Revision	6. Editing
2012								
2013								
2014	59.0	1.0	1.2	52.3	54.8	3.8	62.2	46.4

ENGLISH II	1. Understanding & Analysis Across Genres	1. Average Rating Short Answer #1 ¹	1. Average Rating Short Answer #2 ¹	2. Understanding & Analysis of Literary Texts	3. Understanding & Analysis of Informational Texts	4. Persuasive Composition ²	5. Revision	6. Editing
2012								
2013								
2014	69.8	0.8	1.0	47.6	58.1	3.9	61.9	64.6

¹Short answer rating scale: 0=Insufficient; 1=Partially Sufficient; 2=Sufficient; 3=Exemplary

²Average score points (0-8). A composition is rated twice on a scale of 1 to 4, and the ratings are summed to determine score points for the composition. Score point scale: 0=Nonscorable; 2=Very Limited; 3=between Very Limited and Basic; 4=Basic; 5=between Basic and Satisfactory; 6=Satisfactory; 7=between Satisfactory and Accomplished; 8=Accomplished

PERCENTAGE SATISFACTORY (Levels 2 or 3)

Grade	Year	White	African Amer	Hispanic	Econ Disadv	Special Educ	LEP	At Risk	Migrant	Male	Female	All	District	Number Tested (All Students)
4	2012	59.2	57.9	62.9	59.1	12.5	41.5	34.7		57.4	64.7	60.8	60.6	245
	2013	66.1	67.1	56.6	60.9	10.0	53.6	50.0		57.4	67.0	61.8	63.9	241
	2014	67.4	52.9	53.6	54.6	10.0	31.6	40.9		57.0	58.5	57.7	61.9	222

NUMBER TESTED IN GRADE 4													
2012	76	57	105	215	16	41	95		129	116	245	7,039	
2013	59	70	106	207	10	28	48		129	112	241	6,771	
2014	46	70	97	185	10	19	115		128	94	222	7,022	

PERCENTAGE SATISFACTORY (Levels 2 or 3)

Grade	Year	White	African Amer	Hispanic	Econ Disadv	Special Educ	LEP	At Risk	Migrant	Male	Female	All	District	Number Tested (All Students)
7	2012	56.3	58.2	51.5	50.8	3.8	36.3	31.7		46.1	59.8	53.1	59.2	341
	2013	49.2	47.5	48.9	48.0	8.8	39.5	33.3		38.9	60.8	48.6	57.1	356
	2014	64.0	50.0	52.7	53.8	5.6	35.6	39.9	*	42.1	65.5	53.7	54.6	391

NUMBER TESTED IN GRADE 7													
2012	64	67	200	301	26	80	180		167	174	341	9,456	
2013	65	59	223	319	34	129	213		198	158	356	9,785	
2014	50	76	260	351	18	146	288	1	197	194	391	10,339	

NUMBER UNSATISFACTORY (Level 1)

Grade	Year	White	African Amer	Hispanic	Econ Disadv	Special Educ	LEP	At Risk	Migrant	Male	Female	All	District	Number Tested (All Students)
4	2012	31	24	39	88	14	24	62		55	41	96	2,772	245
	2013	20	23	46	81	9	13	24		55	37	92	2,442	241
	2014	15	33	45	84	9	13	68		55	39	94	2,675	222

NUMBER TESTED IN GRADE 4													
2012	76	57	105	215	16	41	95		129	116	245	7,039	
2013	59	70	106	207	10	28	48		129	112	241	6,771	
2014	46	70	97	185	10	19	115		128	94	222	7,022	

NUMBER UNSATISFACTORY (Level 1)

Grade	Year	White	African Amer	Hispanic	Econ Disadv	Special Educ	LEP	At Risk	Migrant	Male	Female	All	District	Number Tested (All Students)
7	2012	28	28	97	148	25	51	123		90	70	160	3,859	341
	2013	33	31	114	166	31	78	142		121	62	183	4,198	356
	2014	18	38	123	162	17	94	173	*	114	67	181	4,690	391

NUMBER TESTED IN GRADE 7													
2012	64	67	200	301	26	80	180		167	174	341	9,456	
2013	65	59	223	319	34	129	213		198	158	356	9,785	
2014	50	76	260	351	18	146	288	1	197	194	391	10,339	

PERCENTAGE ADVANCED (Level 3)

Grade	Year	White	African Amer	Hispanic	Econ Disadv	Special Educ	LEP	At Risk	Migrant	Male	Female	All	District	Number Tested (All Students)
4	2012	2.6	1.8	1.0	0.9	0.0	0.0	0.0		1.6	1.7	1.6	5.1	245
	2013	1.7	2.9	2.8	2.9	0.0	7.1	4.2		0.8	4.5	2.5	4.7	241
	2014	0.0	0.0	0.0	0.5	0.0	0.0	0.0		0.0	1.1	0.5	3.7	222

NUMBER TESTED IN GRADE 4													
2012	76	57	105	215	16	41	95		129	116	245	7,039	
2013	59	70	106	207	10	28	48		129	112	241	6,771	
2014	46	70	97	185	10	19	115		128	94	222	7,022	

PERCENTAGE ADVANCED (Level 3)

Grade	Year	White	African Amer	Hispanic	Econ Disadv	Special Educ	LEP	At Risk	Migrant	Male	Female	All	District	Number Tested (All Students)
7	2012	4.7	0.0	1.0	1.0	0.0	0.0	0.0		0.6	2.3	1.5	3.4	341
	2013	1.5	1.7	0.4	0.9	0.0	0.0	0.0		0.0	1.9	0.8	1.5	356
	2014	2.0	2.6	1.5	1.7	0.0	0.7	0.3	*	1.0	2.6	1.8	3.0	391

NUMBER TESTED IN GRADE 7													
2012	64	67	200	301	26	80	180		167	174	341	9,456	
2013	65	59	223	319	34	129	213		198	158	356	9,785	
2014	50	76	260	351	18	146	288	1	197	194	391	10,339	

AVERAGE PERCENTAGE OF ITEMS CORRECT BY REPORTING CATEGORY

Grade	Year	REPORTING CATEGORY			
		1. Composition ¹ GR 4: Personal Narrative GR 7: Expository	1. Composition ¹ GR 4: Expository GR 7: Personal Narrative	2. Revision	3. Editing
4	2012	2.0	1.8	58.9	58.4
	2013	3.9	3.7	55.3	63.1
	2014	3.7	3.7	63.7	56.5
7	2012	1.7	2.2	63.2	54.9
	2013	3.9	4.5	58.5	52.4
	2014	3.7	4.5	61.2	54.6

¹Average score points (range 0-8). A STAAR composition is rated twice on a scale of 1 to 4, and the ratings are summed to determine score points for the composition. Score point scale: 0=Non-scorable; 2=Very Limited; 3=between Very Limited and Basic; 4=Basic; 5=between Basic and Satisfactory; 6=Satisfactory; 7=between Satisfactory and Accomplished; 8=Accomplished

PERCENTAGE SATISFACTORY (Levels 2 or 3)

Grade	Year	White	African Amer	Hispanic	Econ Disadv	Special Educ	LEP	At Risk	Migrant	Male	Female	All	District	Number Tested (All Students)
3	2012	57.1	46.2	61.5	57.9	25.0	60.8	47.7		58.9	56.1	57.5	55.4	332
	2013	68.3	44.7	55.4	55.1	30.0	55.7	46.8		58.4	52.8	55.8	57.5	416
	2014	62.5	50.0	57.0	55.5	26.7	57.2	50.0		58.7	54.9	56.6	59.3	477
4	2012	53.8	53.4	53.9	53.1	36.8	53.3	44.3		54.2	53.5	53.9	53.0	373
	2013	55.2	47.1	59.5	55.3	16.7	58.5	54.7		59.3	53.6	56.5	57.5	377
	2014	70.2	50.7	60.4	58.0	60.0	60.9	51.1		59.7	60.5	60.1	59.0	396
5	2012	60.9	51.3	71.0	66.1	53.3	70.6	57.3		64.2	66.5	65.4	64.1	384
	2013	84.5	76.5	79.1	79.4	55.6	83.4	74.2		77.4	83.2	80.2	81.7	353
	2014	84.0	72.9	80.5	79.8	30.8	81.3	76.5	*	80.6	78.5	79.6	81.4	387
3-5	2012	57.1	50.2	62.2	59.2	39.1	61.6	50.0		59.1	59.0	59.0	57.5	1,089
	2013	70.3	53.8	64.0	62.9	36.0	65.3	57.8		64.6	62.3	63.5	65.3	1,146
	2014	70.6	57.7	65.3	63.7	39.5	65.5	59.1	*	66.2	63.3	64.8	66.3	1,260

NUMBER TESTED IN GRADES 3-5													
2012	203	201	664	999	46	458	657			562	527	1,089	35,372
2013	192	197	734	1,047	50	501	657			599	547	1,146	34,686
2014	177	213	851	1,125	43	589	925	1		625	635	1,260	35,222

PERCENTAGE SATISFACTORY (Levels 2 or 3)

Grade	Year	White	African Amer	Hispanic	Econ Disadv	Special Educ	LEP	At Risk	Migrant	Male	Female	All	District	Number Tested (All Students)
6	2012	68.2	35.8	71.3	60.8	35.3	69.9	54.9		62.6	61.2	61.9	66.4	294
	2013	52.4	26.4	55.1	48.7	15.0	49.2	37.3		48.9	49.2	49.0	60.6	365
	2014	80.8	42.9	68.3	64.8	18.8	68.3	58.4		63.8	69.3	66.3	64.3	335
7	2012	37.5	45.5	56.1	49.0	12.0	50.6	33.9		50.9	50.3	50.6	59.9	336
	2013	63.2	35.6	57.3	54.7	17.6	53.2	41.1		59.9	49.4	55.1	59.9	356
	2014	58.0	33.3	49.4	46.5	17.6	34.5	32.3	*	46.1	47.9	47.0	55.1	383
8	2012	40.9	30.0	65.3	56.1	26.9	45.5	42.8		58.3	50.4	54.6	51.9	269
	2013	77.1	62.7	79.1	75.7	37.5	76.7	66.3		73.5	76.9	75.3	74.0	283
	2014	75.9	52.6	71.9	69.5	29.2	65.9	61.2		68.8	68.8	68.8	73.2	301
6-8	2012	50.0	37.7	63.7	55.0	23.5	57.3	43.4		57.2	53.8	55.5	60.3	899
	2013	63.1	39.6	62.7	58.2	24.4	56.9	47.4		59.5	57.7	58.6	63.7	1,004
	2014	71.8	42.0	62.1	59.1	21.9	55.1	49.4	*	58.9	60.7	59.8	63.3	1,019

NUMBER TESTED IN GRADES 6-8													
2012	174	183	523	786	68	225	563			460	439	899	26,044
2013	179	182	622	912	86	325	563			521	482	1,004	26,676
2014	156	188	659	898	73	372	741	1		538	481	1,019	27,304

NUMBER UNSATISFACTORY (Level 1)

Grade	Year	White	African Amer	Hispanic	Econ Disadv	Special Educ	LEP	At Risk	Migrant	Male	Female	All	District	Number Tested (All Students)
3	2012	24	35	79	128	9	51	114		69	72	141	5,287	332
	2013	20	42	119	166	14	82	141		91	93	184	5,086	416
	2014	30	36	138	192	11	98	168		88	119	207	4,988	477
4	2012	36	27	105	160	12	77	123		92	80	172	5,511	373
	2013	26	37	98	153	10	66	81		79	85	164	4,919	377
	2014	14	35	106	146	6	72	138		83	75	158	4,803	396
5	2012	27	38	67	120	7	48	103		69	64	133	4,228	384
	2013	11	12	47	69	8	26	55		42	28	70	2,035	353
	2014	8	19	51	70	9	33	72	*	40	39	79	2,088	387
3-5	2012	87	100	251	408	28	176	340		230	216	446	15,026	1,089
	2013	57	91	264	388	32	174	277		212	206	418	12,040	1,146
	2014	52	90	295	408	26	203	378	*	211	233	444	11,879	1,260

NUMBER TESTED IN GRADES 3-5													
2012	203	201	664	999	46	458	657			562	527	1,089	35,372
2013	192	197	734	1,047	50	501	657			599	547	1,146	34,686
2014	177	213	851	1,125	43	589	925	1		625	635	1,260	35,222

NUMBER UNSATISFACTORY (Level 1)

Grade	Year	White	African Amer	Hispanic	Econ Disadv	Special Educ	LEP	At Risk	Migrant	Male	Female	All	District	Number Tested (All Students)
6	2012	21	43	45	102	11	28	69		58	54	112	3,327	294
	2013	30	53	102	176	17	64	116		96	90	186	4,133	365
	2014	10	32	70	103	26	45	101		67	46	113	3,478	335
7	2012	40	36	86	151	22	38	117		79	87	166	3,705	336
	2013	25	38	93	144	28	59	123		79	80	160	3,851	356
	2014	21	50	128	185	14	91	189	*	104	99	203	4,536	383
8	2012	26	35	59	101	19	30	91		60	62	122	3,319	269
	2013	11	19	37	61	20	17	57		36	34	70	1,709	283
	2014	13	27	52	79	17	31	85		50	44	94	2,001	301
6-8	2012	87	114	190	354	52	96	277		197	203	400	10,351	899
	2013	66	110	232	381	65	140	296		211	204	416	9,693	1,004
	2014	44	109	250	367	57	167	375	*	221	189	410	10,015	1,019

NUMBER TESTED IN GRADES 6-8													
2012	174	183	523	786	68	225	563			460	439	899	26,044
2013	179	182	622	912	86	325	563			521	482	1,004	26,676
2014	156	188	659	898	73	372	741	1		538	481	1,019	27,304

PERCENTAGE ADVANCED (Level 3)

Grade	Year	White	African Amer	Hispanic	Econ Disadv	Special Educ	LEP	At Risk	Migrant	Male	Female	All	District	Number Tested (All Students)
3	2012	12.5	4.6	6.8	6.6	0.0	7.7	4.1		5.4	9.1	7.2	7.9	332
	2013	17.5	3.9	7.9	8.4	0.0	9.7	6.8		8.2	9.6	8.9	9.1	416
	2014	10.0	8.3	8.4	9.0	0.0	9.6	6.8		9.9	8.0	8.8	10.4	477
4	2012	6.4	0.0	7.9	6.2	5.3	6.7	5.4		7.0	5.8	6.4	6.1	373
	2013	8.6	8.6	10.7	9.6	0.0	11.3	10.1		9.8	9.8	9.8	9.5	377
	2014	27.7	9.9	13.1	12.1	6.7	14.1	11.0		16.5	11.6	14.1	14.0	396
5	2012	4.3	6.4	14.3	11.0	6.7	16.0	10.4		12.4	8.9	10.7	10.4	384
	2013	11.3	5.9	12.9	11.3	5.6	11.5	8.9		11.3	12.0	11.6	12.8	353
	2014	18.0	4.3	16.0	13.6	0.0	16.5	10.1	*	16.0	12.2	14.2	15.7	387
3-5	2012	7.4	4.0	9.8	8.0	4.3	10.3	6.8		8.4	8.0	8.2	8.1	1,089
	2013	12.5	6.1	10.4	9.7	2.0	10.8	8.4		9.7	10.4	10.0	10.4	1,146
	2014	16.9	7.5	12.2	11.4	2.3	13.1	9.2	*	14.1	10.2	12.1	13.3	1,260

NUMBER TESTED IN GRADE 3-5													
2012	203	201	664	999	46	458	680			562	527	1,089	35,372
2013	192	197	734	1,047	50	501	657			599	547	1,146	34,686
2014	177	213	851	1,125	43	589	925	1		625	635	1,260	35,222

PERCENTAGE ADVANCED (Level 3)

Grade	Year	White	African Amer	Hispanic	Econ Disadv	Special Educ	LEP	At Risk	Migrant	Male	Female	All	District	Number Tested (All Students)
6	2012	4.5	0.0	5.7	4.2	0.0	5.4	3.3		2.6	5.8	4.1	9.8	294
	2013	0.0	1.4	3.5	2.3	0.0	0.8	0.5		3.7	1.1	2.5	8.5	365
	2014	5.8	0.0	3.2	2.7	3.1	4.2	2.9		2.7	3.3	3.0	9.6	335
7	2012	3.1	1.5	2.6	2.0	0.0	1.3	0.6		2.5	2.3	2.4	6.3	336
	2013	1.5	0.0	0.0	0.3	0.0	0.0	0.0		0.5	0.0	0.3	4.8	356
	2014	0.0	1.3	5.5	4.0	0.0	2.2	1.1	*	4.1	3.7	3.9	6.7	383
8	2012	0.0	0.0	0.0	0.0	0.0	0.0	0.0		0.0	0.0	0.0	0.4	269
	2013	0.0	0.0	0.0	0.0	0.0	0.0	0.0		0.0	0.0	0.0	0.9	283
	2014	3.7	0.0	0.0	0.8	0.0	0.0	0.0		0.6	0.7	0.7	1.0	301
6-8	2012	2.9	0.5	2.7	2.2	0.0	2.7	1.2		1.7	2.7	2.2	6.1	899
	2013	0.6	0.5	1.3	1.0	0.0	0.3	0.2		1.5	0.4	1.0	5.3	1,004
	2014	3.2	0.5	3.2	2.7	1.4	2.4	1.3	*	2.6	2.7	2.6	6.2	1,019

NUMBER TESTED IN GRADE 6-8													
2012	174	183	523	786	68	225	489		460	439	899	26,044	
2013	179	182	622	912	86	325	563		521	482	1,004	26,676	
2014	156	188	659	898	73	372	741	1	538	481	1,019	27,304	

AVERAGE PERCENTAGE OF ITEMS CORRECT BY REPORTING CATEGORY

Grade	Year	REPORTING CATEGORY				
		1. Numbers, Operations, and Quantitative Reasoning	2. Patterns, Relationships, and Algebraic Reasoning	3. Geometry and Spatial Reasoning	4. Measurement	5. Probability and Statistics
3	2012	57.9	60.6	70.0	56.1	49.2
	2013	59.4	57.1	66.4	65.3	59.0
	2014	64.1	61.8	56.7	64.0	57.1
4	2012	59.7	58.0	62.9	56.7	55.2
	2013	64.7	61.1	67.0	60.4	50.3
	2014	63.9	66.3	67.6	58.1	58.7
5	2012	60.1	59.8	63.7	53.7	59.8
	2013	66.4	64.4	61.7	61.7	68.1
	2014	68.5	65.9	70.4	60.6	65.2
3-5	2012	59.3	59.4	65.3	55.5	55.0
	2013	63.3	60.6	65.2	62.6	58.9
	2014	65.4	64.5	64.3	61.1	60.1

AVERAGE PERCENTAGE OF ITEMS CORRECT BY REPORTING CATEGORY

Grade	Year	REPORTING CATEGORY				
		1. Numbers, Operations, and Quantitative Reasoning	2. Patterns, Relationships, and Algebraic Reasoning	3. Geometry and Spatial Reasoning	4. Measurement	5. Probability and Statistics
6	2012	43.9	54.3	48.2	45.5	52.6
	2013	47.7	47.3	41.3	35.5	43.3
	2014	52.2	48.5	52.8	49.3	52.1
7	2012	45.5	50.4	45.4	41.5	42.5
	2013	44.3	47.5	53.0	34.4	38.1
	2014	54.2	46.1	46.2	39.9	43.3
8	2012	46.5	40.7	38.6	39.5	42.4
	2013	51.5	51.6	46.1	47.5	37.8
	2014	44.7	48.3	44.5	40.4	49.7
6-8	2012	45.3	48.7	44.3	42.2	45.8
	2013	47.5	48.6	46.8	38.5	39.9
	2014	50.7	47.6	47.9	43.2	48.1

PERCENTAGE SATISFACTORY (Levels 2 or 3)

Test	Year	White	African Amer	Hispanic	Econ Disadv	Special Educ	LEP	At Risk	Migrant	Male	Female	All	District
ALGEBRA I	2012	63.2	66.1	55.5	57.7	16.7	41.4	42.8		52.6	64.7	59.3	74.7
	2013	69.0	51.0	62.2	61.0	9.7	43.4	49.1		62.0	61.3	61.7	72.5
	2014	78.8	72.7	75.2	75.1	41.5	68.0	66.9		73.6	76.8	75.2	78.0
Tests Taken	2012	57	62	182	253	30	58	167		135	167	302	8,795
	2013	58	51	188	259	31	53	167		166	137	303	9,251
	2014	66	77	262	321	41	97	293		201	211	412	9,524

NUMBER UNSATISFACTORY (Level 1)

Test	Year	White	African Amer	Hispanic	Econ Disadv	Special Educ	LEP	At Risk	Migrant	Male	Female	All	District
ALGEBRA I	2012	21	21	81	107	25	34	99		64	59	123	2,226
	2013	18	25	71	101	28	30	85		63	53	116	2,540
	2014	14	21	65	80	24	31	97		53	49	102	2,099
Tests Taken	2012	57	62	182	253	30	58	167		135	167	302	8,795
	2013	58	51	188	259	31	53	167		166	137	303	9,251
	2014	66	77	262	321	41	97	293		201	211	412	9,524

PERCENTAGE ADVANCED (Level 3)

Test	Year	White	African Amer	Hispanic	Econ Disadv	Special Educ	LEP	At Risk	Migrant	Male	Female	All	District
ALGEBRA I	2012	3.5	0.0	0.5	0.8	0.0	0.0	0.0		0.7	1.2	1.0	7.0
	2013	3.4	5.9	3.2	3.9	0.0	1.9	0.0		3.6	3.6	3.6	8.6
	2014	4.5	6.5	3.8	3.7	0.0	3.1	1.7		2.5	6.2	4.4	9.9
Tests Taken	2012	57	62	182	253	30	58	173		135	167	302	8,795
	2013	58	51	188	259	31	53	167		166	137	303	9,251
	2014	66	77	262	321	41	97	293		201	211	412	9,524

AVERAGE PERCENTAGE OF ITEMS CORRECT BY REPORTING CATEGORY

ALGEBRA I	1. Functional Relationships	2. Properties and Attributes of Functions	3. Linear Functions	4. Linear Equations and Inequalities	5. Quadratic and Other Nonlinear Functions
2012	44.5	40.2	41.4	36.3	40.5
2013	47.4	41.8	42.2	48.7	38.0
2014	46.1	46.5	51.0	50.8	42.9

PERCENTAGE SATISFACTORY (Levels 2 or 3)

Grade	Year	White	African Amer	Hispanic	Econ Disadv	Special Educ	LEP	At Risk	Migrant	Male	Female	All	District	Number Tested (All Students)
5	2012	63.2	58.2	75.9	69.7	44.4	76.9	60.1		70.1	69.3	69.7	58.2	340
	2013	76.1	49.1	67.5	65.5	33.3	65.7	55.8		66.9	66.2	66.6	65.1	296
	2014	71.4	48.6	55.3	56.3	15.4	53.2	47.6		64.3	47.4	56.4	61.3	287

NUMBER TESTED IN GRADE 5													
2012	68	79	187	310	18	117	198		177	163	340	10,697	
2013	71	53	166	278	21	102	156		157	139	296	10,180	
2014	49	72	161	252	13	77	208		154	133	287	9,073	

PERCENTAGE SATISFACTORY (Levels 2 or 3)

Grade	Year	White	African Amer	Hispanic	Econ Disadv	Special Educ	LEP	At Risk	Migrant	Male	Female	All	District	Number Tested (All Students)
8	2012	69.5	32.2	52.0	49.3	31.0	30.9	29.6		58.8	44.1	51.4	54.0	321
	2013	64.8	46.8	56.2	53.3	15.2	42.5	37.8		56.3	53.9	55.1	65.8	325
	2014	75.0	56.5	70.2	69.3	44.0	60.0	56.1		69.4	67.7	68.6	61.9	347

NUMBER TESTED IN GRADE 8													
2012	59	59	196	270	29	55	162		160	161	321	9,431	
2013	54	62	201	287	33	73	172		158	167	325	8,998	
2014	64	62	215	290	25	90	230		183	164	347	9,466	

NUMBER UNSATISFACTORY (Level 1)

Grade	Year	White	African Amer	Hispanic	Econ Disadv	Special Educ	LEP	At Risk	Migrant	Male	Female	All	District	Number Tested (All Students)
5	2012	25	33	45	94	10	27	79		53	50	103	4476	340
	2013	17	27	54	96	14	35	69		52	47	99	3551	296
	2014	14	37	72	110	11	36	109		55	70	125	3511	287

NUMBER TESTED IN GRADE 5													
2012	68	79	187	310	18	117	198		177	163	340	10,697	
2013	71	53	166	278	21	102	156		157	139	296	10,180	
2014	49	72	161	252	13	77	208		154	133	287	9,073	

NUMBER UNSATISFACTORY (Level 1)

Grade	Year	White	African Amer	Hispanic	Econ Disadv	Special Educ	LEP	At Risk	Migrant	Male	Female	All	District	Number Tested (All Students)
8	2012	18	40	94	137	20	38	114		66	90	156	4335	321
	2013	19	33	88	134	28	42	107		69	77	146	3074	325
	2014	16	27	64	89	14	36	101		56	53	109	3605	347

NUMBER TESTED IN GRADE 8													
2012	59	59	196	270	29	55	162		160	161	321	9,431	
2013	54	62	201	287	33	73	172		158	167	325	8,998	
2014	64	62	215	290	25	90	230		183	164	347	9,466	

PERCENTAGE ADVANCED (Level 3)

Grade	Year	White	African Amer	Hispanic	Econ Disadv	Special Educ	LEP	At Risk	Migrant	Male	Female	All	District	Number Tested (All Students)
5	2012	2.9	5.1	9.1	7.1	5.6	10.3	6.6		9.6	3.7	6.8	6.5	340
	2013	9.9	3.8	6.6	6.1	0.0	2.9	1.9		7.6	5.8	6.8	6.6	296
	2014	10.2	1.4	6.8	5.6	0.0	6.5	3.4		8.4	3.8	6.3	5.3	287

NUMBER TESTED IN GRADE 5													
2012	68	79	187	310	18	117	198		177	163	340	10,697	
2013	71	53	166	278	21	102	156		157	139	296	10,180	
2014	49	72	161	252	13	77	208		154	133	287	9,073	

PERCENTAGE ADVANCED (Level 3)

Grade	Year	White	African Amer	Hispanic	Econ Disadv	Special Educ	LEP	At Risk	Migrant	Male	Female	All	District	Number Tested (All Students)
8	2012	5.1	0.0	1.5	1.9	0.0	0.0	0.6		3.1	0.6	1.9	4.2	321
	2013	5.6	0.0	2.0	2.1	0.0	0.0	0.0		3.2	1.2	2.2	7.1	325
	2014	20.3	8.1	6.0	8.6	8.0	1.1	2.2		8.2	9.8	8.9	11.3	347

NUMBER TESTED IN GRADE 8													
2012	59	59	196	270	29	55	162		160	161	321	9,431	
2013	54	62	201	287	33	73	172		158	167	325	8,998	
2014	64	62	215	290	25	90	230		183	164	347	9,466	

AVERAGE PERCENTAGE OF ITEMS CORRECT BY REPORTING CATEGORY

Grade	Year	REPORTING CATEGORY			
		1. Matter and Energy	2. Force, Motion, and Energy	3. Earth and Space	4. Organisms and Environments
5	2012	75.3	77.1	69.0	66.6
	2013	67.7	71.4	61.3	63.3
	2014	63.8	62.4	57.6	62.2
8	2012	48.1	54.2	55.0	58.2
	2013	55.5	49.6	52.1	52.8
	2014	63.6	57.1	55.2	72.1

PERCENTAGE SATISFACTORY (Levels 2 and 3)

Test	Year	White	African Amer	Hispanic	Econ Disadv	Special Educ	LEP	At Risk	Migrant	Male	Female	All	District
BIOLOGY	2012	80.4	77.4	71.8	74.0	35.5	62.1	63.2		74.3	75.0	74.7	82.9
	2013	86.2	65.2	77.7	77.2	38.7	55.1	64.8		77.2	77.4	77.3	84.4
	2014	88.5	85.9	88.8	88.1	71.8	82.4	84.2		86.1	90.7	88.5	89.8
Tests Taken	2012	56	62	177	246	31	58	174		144	152	296	8,881
	2013	58	46	184	254	31	49	165		162	133	295	9,374
	2014	61	71	233	293	39	102	272		180	194	374	9,672

NUMBER UNSATISFACTORY (Level 1)

Test	Year	White	African Amer	Hispanic	Econ Disadv	Special Educ	LEP	At Risk	Migrant	Male	Female	All	District
BIOLOGY	2012	11	14	50	64	20	22	64		37	38	75	1,522
	2013	8	16	41	58	19	22	58		37	30	67	1,467
	2014	7	10	26	35	11	18	43		25	18	43	987
Tests Taken	2012	56	62	177	246	31	58	174		144	152	296	8,881
	2013	58	46	184	254	31	49	165		162	133	295	9,374
	2014	61	71	233	293	39	102	272		180	194	374	9,672

PERCENTAGE ADVANCED (Level 3)

Test	Year	White	African Amer	Hispanic	Econ Disadv	Special Educ	LEP	At Risk	Migrant	Male	Female	All	District
BIOLOGY	2012	7.1	0.0	0.0	1.2	3.2	0.0	0.0		2.1	0.7	1.4	4.8
	2013	6.9	0.0	1.6	2.4	0.0	0.0	0.6		3.7	0.8	2.4	7.5
	2014	14.8	1.4	3.9	4.4	0.0	1.0	0.4		5.0	5.7	5.3	7.5
Tests Taken	2012	56	62	177	246	31	58	174		144	152	296	8,881
	2013	58	46	184	254	31	49	165		162	133	295	9,374
	2014	61	71	233	293	39	102	272		180	194	374	9,672

AVERAGE PERCENTAGE OF ITEMS CORRECT BY REPORTING CATEGORY

BIOLOGY	1. Cell Structure and Function	2. Mechanisms of Genetics	3. Biological Evolution and Classification	4. Biological Processes and Systems	5. Interdependence within Environmental Systems
2012	43.1	44.0	51.7	38.9	49.8
2013	46.3	46.7	55.6	43.6	52.7
2014	50.2	57.7	63.2	58.4	50.4

PERCENTAGE SATISFACTORY (Levels 2 or 3)

Grade	Year	White	African Amer	Hispanic	Econ Disadv	Special Educ	LEP	At Risk	Migrant	Male	Female	All	District	Number Tested (All Students)
8	2012	62.1	35.6	40.3	39.8	21.4	23.6	26.7		46.3	40.0	43.1	52.5	320
	2013	44.4	40.3	36.5	37.8	9.1	24.7	24.6		38.2	37.7	38.0	59.3	324
	2014	55.6	29.0	47.9	45.7	28.0	31.1	30.9		45.9	46.0	46.0	53.5	346

NUMBER TESTED IN GRADE 8													
2012	58	59	196	269	28	55	161		160	160	320	9,392	
2013	54	62	200	286	33	73	171		157	167	324	8,991	
2014	63	62	215	289	25	90	230		183	163	346	9,464	

NUMBER UNSATISFACTORY (Level 1)

Grade	Year	White	African Amer	Hispanic	Econ Disadv	Special Educ	LEP	At Risk	Migrant	Male	Female	All	District	Number Tested (All Students)
8	2012	22	38	117	162	22	42	118		86	96	182	4462	320
	2013	30	37	127	178	30	55	129		97	104	201	3656	324
	2014	28	44	112	157	18	62	159		99	88	187	4402	346

NUMBER TESTED IN GRADE8													
2012	58	59	196	269	28	55	161		160	160	320	9,392	
2013	54	62	200	286	33	73	171		157	167	324	8,991	
2014	63	62	215	289	25	90	230		183	163	346	9,464	

PERCENTAGE ADVANCED (Level 3)

Grade	Year	White	African Amer	Hispanic	Econ Disadv	Special Educ	LEP	At Risk	Migrant	Male	Female	All	District	Number Tested (All Students)
8	2012	1.7	1.7	0.0	0.7	0.0	0.0	0.0		0.6	0.6	0.6	7.1	320
	2013	0.0	1.6	0.5	0.7	0.0	0.0	0.6		0.6	0.6	0.6	8.8	324
	2014	1.6	3.2	2.3	2.8	0.0	0.0	0.4		1.6	3.1	2.3	7.3	346

NUMBER TESTED IN GRADE 8													
2012	58	59	196	269	28	55	161		160	160	320	9,392	
2013	54	62	200	286	33	73	171		157	167	324	8,991	
2014	63	62	215	289	25	90	230		183	163	346	9,464	

AVERAGE PERCENTAGE OF ITEMS CORRECT BY REPORTING CATEGORY

Grade	Year	REPORTING CATEGORY			
		1. History	2. Geography and Culture	3. Government and Citizenship	4. Economics, Science, Technology, and Society
8	2012	44.8	48.9	48.9	38.0
	2013	49.2	53.2	33.4	40.5
	2014	52.0	44.3	49.2	53.4

PERCENTAGE SATISFACTORY (Levels 2 or 3)

Test	Year	White	African Amer	Hispanic	Econ Disadv	Special Educ	LEP	At Risk	Migrant	Male	Female	All	District
U.S. HISTORY	2012												*
	2013												90.2
	2014	95.3	90.2	89.5	90.0	60.9	78.0	86.7		94.9	86.4	90.6	92.0
Tests Taken	2012												4
	2013												51
	2014	43	61	171	210	23	50	188		136	140	276	7,801

NUMBER UNSATISFACTORY (Level 1)

Test	Year	White	African Amer	Hispanic	Econ Disadv	Special Educ	LEP	At Risk	Migrant	Male	Female	All	District
U.S. HISTORY	2012												*
	2013												5
	2014	2	6	18	21	9	11	25		7	19	26	625
Tests Taken	2012												4
	2013												51
	2014	43	61	171	210	23	50	188		136	140	276	7,801

PERCENTAGE ADVANCED (Level 3)

Test	Year	White	African Amer	Hispanic	Econ Disadv	Special Educ	LEP	At Risk	Migrant	Male	Female	All	District
U.S. HISTORY	2012												*
	2013												2.0
	2014	7.0	3.3	7.6	5.7	0.0	0.0	3.7		8.8	4.3	6.5	10.3
Tests Taken	2012												4
	2013												51
	2014	43	61	171	210	23	50	188		136	140	276	7,801

AVERAGE PERCENTAGE OF ITEMS CORRECT BY REPORTING CATEGORY

U.S. HISTORY	1. History	2. Geography and Culture	3. Government and Citizenship	4. Economics, Science, Technology, and Society
2012				
2013				
2014	53.6	65.0	60.7	63.8

PERCENTAGE SATISFACTORY (Levels 2 or 3)

Grade	Year	White	African Amer	Hispanic	Econ Disadv	Special Educ	LEP	At Risk	Migrant	Male	Female	All	District	Number Tested (All Students)
3	2012			61.2	61.4	*	61.7	61.4		50.8	70.6	61.2	65.5	129
	2013			62.8	62.6	16.7	62.1	62.5		56.0	69.3	62.8	69.6	172
	2014			67.1	67.3	*	67.8	67.8		62.5	70.9	67.1	65.2	213
4	2012	*		52.3	52.3	*	52.7	52.7		47.2	59.3	52.7	64.4	131
	2013			60.5	59.8	*	60.2	60.3		52.5	67.6	60.5	61.0	129
	2014			51.1	50.6	0.0	50.9	50.9		47.6	54.3	51.1	60.8	174
5	2012			73.1	72.8	*	73.1	73.1		68.2	77.6	73.1	72.1	93
	2013			89.8	89.9	*	90.8	89.8		91.8	87.5	89.9	86.5	89
	2014			81.4	80.4	*	82.3	81.4		77.6	85.4	81.4	83.0	97
3-5	2012	*		61.1	61.0	12.5	61.4	61.3		53.7	68.8	61.2	66.8	353
	2013			68.1	68.0	25.0	68.0	68.1		63.9	72.4	68.2	70.6	390
	2014			64.3	64.1	23.1	64.7	64.6		60.4	67.7	64.3	68.7	484

NUMBER TESTED IN GRADES 3-5													
2012	1		350	349	8	352	351		177	176	353	14,102	
2013			389	387	12	384	382		194	196	390	13,810	
2014			484	462	13	468	469		227	257	484	14,654	

NUMBER UNSATISFACTORY (Level 1)

Grade	Year	White	African Amer	Hispanic	Econ Disadv	Special Educ	LEP	At Risk	Migrant	Male	Female	All	District	Number Tested (All Students)
3	2012			50	49	*	49	49		30	20	50	1,957	129
	2013			64	64	5	64	63		37	27	64	1,697	172
	2014			70	68	*	66	66		36	34	70	2,005	213
4	2012	*		61	62	*	62	62		38	24	62	1,728	131
	2013			51	51	*	51	50		29	22	51	1,915	129
	2014			85	80	6	82	82		43	42	85	1,891	174
5	2012			25	25	*	25	25		14	11	25	998	93
	2013			9	9	*	8	9		4	5	9	449	89
	2014			18	18	*	17	18		11	7	18	692	97
3-5	2012	*		136	136	7	136	136		82	55	137	4,683	353
	2013			124	124	9	123	122		70	54	124	4,061	390
	2014			173	166	10	165	166		90	83	173	4,588	484

NUMBER TESTED IN GRADES 3-5													
2012	1		350	349	8	352	351		177	176	353	14,102	
2013			389	387	12	384	382		194	196	390	13,810	
2014			484	462	13	468	469		227	257	484	14,654	

PERCENTAGE ADVANCED (Level 3)

Grade	Year	White	African Amer	Hispanic	Econ Disadv	Special Educ	LEP	At Risk	Migrant	Male	Female	All	District	Number Tested (All Students)
3	2012			10.1	9.4	*	10.2	9.4		6.6	13.2	10.1	13.4	129
	2013			16.9	17.0	0.0	16.6	16.7		9.5	23.9	16.9	17.4	172
	2014			16.4	16.3	*	16.1	16.1		13.5	18.8	16.4	17.6	213
4	2012	*		13.3	13.8	*	13.7	13.7		13.9	13.6	13.7	13.0	131
	2013			10.9	10.2	*	10.2	10.3		8.2	13.2	10.9	13.4	129
	2014			9.8	7.4	0.0	9.6	9.6		6.1	13.0	9.8	12.5	174
5	2012			15.1	15.2	*	15.1	15.1		13.6	16.3	15.1	12.1	93
	2013			8.0	7.9	*	6.9	6.8		8.2	7.5	7.9	11.6	89
	2014			11.3	12.0	*	11.5	11.3		14.3	8.3	11.3	15.8	97
3-5	2012	*		12.6	12.6	0.0	12.8	12.5		11.3	14.2	12.7	12.9	353
	2013			12.9	12.7	0.0	12.2	12.3		8.8	16.8	12.8	14.6	390
	2014			13.0	12.3	0.0	12.8	12.8		11.0	14.8	13.0	15.4	484

NUMBER TESTED IN GRADE 3-5													
2012	1		350	349	8	352	351		177	176	353	14,102	
2013			389	387	12	384	382		194	196	390	13,810	
2014			484	462	13	468	469		227	257	484	14,654	

AVERAGE PERCENTAGE OF ITEMS CORRECT BY REPORTING CATEGORY

Grade	Year	REPORTING CATEGORY		
		1. Understanding Across Genres	2. Understanding/Analysis of Literary Texts	3. Understanding/Analysis of Informational Texts
3	2012	64.7	54.7	47.9
	2013	53.3	57.6	58.5
	2014	67.2	54.9	59.9
4	2012	54.0	61.2	54.7
	2013	58.7	60.6	52.6
	2014	57.6	54.5	55.5
5	2012	62.4	62.2	59.5
	2013	60.9	62.7	67.0
	2014	56.9	64.8	61.4
3-5	2012	60.1	59.1	53.5
	2013	56.8	59.7	58.5
	2014	61.7	56.7	58.6

PERCENTAGE SATISFACTORY (Levels 2 or 3)

Grade	Year	White	African Amer	Hispanic	Econ Disadv	Special Educ	LEP	At Risk	Migrant	Male	Female	All	District	Number Tested (All Students)
4	2012	*		60.2	60.0	*	60.3	60.3		51.4	71.2	60.3	68.9	131
	2013			58.2	57.6	*	58.1	57.8		44.9	70.8	58.2	62.2	141
	2014			62.3	61.1	16.7	61.7	61.7		52.4	71.0	62.3	65.6	175

NUMBER TESTED IN GRADE 4													
2012	1		128	130	3	131	131		72	59	131	4,905	
2013			141	139	3	136	135		69	72	141	4,958	
2014			175	162	6	167	167		82	93	175	4,841	

NUMBER UNSATISFACTORY (Level 1)

Grade	Year	White	African Amer	Hispanic	Econ Disadv	Special Educ	LEP	At Risk	Migrant	Male	Female	All	District	Number Tested (All Students)
4	2012	*		51	52	*	52	52		35	17	52	1,524	131
	2013			59	59	*	57	57		38	21	59	1,876	141
	2014			66	63	5	64	64		39	27	66	1,667	175

NUMBER TESTED IN GRADE 4													
2012	1		128	130	3	131	131		72	59	131	4,905	
2013			141	139	3	136	135		69	72	141	4,958	
2014			175	162	6	167	167		82	93	175	4,841	

PERCENTAGE ADVANCED (Level 3)

Grade	Year	White	African Amer	Hispanic	Econ Disadv	Special Educ	LEP	At Risk	Migrant	Male	Female	All	District	Number Tested (All Students)
4	2012	*		3.9	3.8	*	3.8	3.8		1.4	6.8	3.8	3.8	131
	2013			0.0	0.0	*	0.0	0.0		0.0	0.0	0.0	3.6	141
	2014			8.0	6.8	0.0	7.2	7.2		4.9	10.8	8.0	5.9	175

NUMBER TESTED IN GRADE 4													
2012	1		128	130	3	131	131		72	59	131	4,905	
2013			141	139	3	136	135		69	72	141	4,958	
2014			175	162	6	167	167		82	93	175	4,841	

AVERAGE PERCENTAGE OF ITEMS CORRECT BY REPORTING CATEGORY

Grade	Year	REPORTING CATEGORY			
		1. Composition ¹ Personal Narrative	1. Composition ¹ Expository	2. Revision	3. Editing
4	2012	1.8	1.7	56.2	63.2
	2013	4.1	4.2	56.5	66.1
	2014	4.4	4.3	63.2	62.9

¹Average score points (range 0-8). A STAAR composition is rated twice on a scale of 1 to 4, and the ratings are summed to determine score points for the composition. Score point scale: 0=Non-scorable; 2=Very Limited; 3=between Very Limited and Basic; 4=Basic; 5=between Basic and Satisfactory; 6=Satisfactory; 7=between Satisfactory and Accomplished; 8=Accomplished

PERCENTAGE SATISFACTORY (Levels 2 or 3)

Grade	Year	White	African Amer	Hispanic	Econ Disadv	Special Educ	LEP	At Risk	Migrant	Male	Female	All	District	Number Tested (All Students)
3	2012			*	*		*	*		*	*	*	36.6	3
	2013			*	*		*	*			*	*	20.5	1
	2014			*	*		*	*		*	*	*	23.0	2
4	2012												28.4	0
	2013			*	*		*	*		*		*	27.3	5
	2014			*	*		*	*		*	*	*	22.8	2
5	2012			0.0	0.0	*	0.0	0.0		0.0	*	0.0	24.1	7
	2013			*	*		*	*		*		*	41.5	2
	2014			*	*		*	*		*	*	*	38.8	4
3-5	2012			20.0	20.0	*	20.0	20.0		25.0	*	20.0	31.7	10
	2013			37.5	37.5		37.5	42.9		42.9	*	37.5	30.9	8
	2014			50.0	50.0		57.1	66.7		*	*	50.0	29.2	8

NUMBER TESTED IN GRADES 3-5													
2012			10	10	2	10	10			8	2	10	259
2013			8	8		8	7			7	1	8	233
2014			8	8		7	6			5	3	8	295

NUMBER UNSATISFACTORY (Level 1)

Grade	Year	White	African Amer	Hispanic	Econ Disadv	Special Educ	LEP	At Risk	Migrant	Male	Female	All	District	Number Tested (All Students)
3	2012			*	*		*	*		*	*	*	83	3
	2013			*	*		*	*			*	*	58	1
	2014			*	*		*	*		*	*	*	77	2
4	2012												53	0
	2013			*	*		*	*		*		*	48	5
	2014			*	*		*	*		*	*	*	61	2
5	2012			7	7	*	7	7		6	*	7	41	7
	2013			*	*		*	*		*		*	55	2
	2014			*	*		*	*		*	*	*	71	4
3-5	2012			8	8	*	8	8		6	*	8	177	10
	2013			5	5		5	4		4	*	5	161	8
	2014			4	4		3	2		*	*	4	209	8

NUMBER TESTED IN GRADES 3-5													
2012			10	10	2	10	10			8	2	10	259
2013			8	8		8	7			7	1	8	233
2014			8	8		7	6			5	3	8	295

PERCENTAGE ADVANCED (Level 3)

Grade	Year	White	African Amer	Hispanic	Econ Disadv	Special Educ	LEP	At Risk	Migrant	Male	Female	All	District	Number Tested (All Students)
3	2012			*	*		*	*		*	*	*	0.8	3
	2013			*	*		*	*			*	*	1.4	1
	2014			*	*		*	*		*	*	*	0.0	2
4	2012												2.7	0
	2013			*	*		*	*		*		*	3.0	5
	2014			*	*		*	*		*	*	*	1.3	2
5	2012			0.0	0.0	*	0.0	0.0		0.0	*	0.0	1.9	7
	2013			*	*		*	*		*		*	1.1	2
	2014			*	*		*	*		*	*	*	0.9	4
3-5	2012			0.0	0.0	*	0.0	0.0		0.0	*	0.0	1.5	10
	2013			0.0	0.0		0.0	0.0		0.0	*	0.0	1.7	8
	2014			0.0	0.0		0.0	0.0		*	*	0.0	0.7	8

NUMBER TESTED IN GRADE 3-5													
2012			10	10	2	10	10			8	2	10	259
2013			8	8		8	7			7	1	8	233
2014			8	8		7	6			5	3	8	295

AVERAGE PERCENTAGE OF ITEMS CORRECT BY REPORTING CATEGORY

Grade	Year	REPORTING CATEGORY				
		1. Numbers, Operations, and Quantitative Reasoning	2. Patterns, Relationships, and Algebraic Reasoning	3. Geometry and Spatial Reasoning	4. Measurement	5. Probability and Statistics
3	2012	*	*	*	*	*
	2013	*	*	*	*	*
	2014	*	*	*	*	*
4	2012					
	2013	*	*	*	*	*
	2014	*	*	*	*	*
5	2012	32.5	28.6	32.7	25.0	39.0
	2013	*	*	*	*	*
	2014	*	*	*	*	*
3-5	2012	34.1	36.3	40.6	32.5	40.6
	2013	62.3	47.9	53.8	43.8	32.0
	2014	39.1	40.6	44.4	51.6	44.6

PERCENTAGE SATISFACTORY (Levels 2 or 3)

Grade	Year	White	African Amer	Hispanic	Econ Disadv	Special Educ	LEP	At Risk	Migrant	Male	Female	All	District	Number Tested (All Students)
5	2012			37.7	36.5		37.7	37.7		27.3	45.2	37.7	45.4	53
	2013			24.6	24.6	*	25.0	24.6		25.7	23.3	24.6	43.0	65
	2014			54.8	54.0	*	54.5	54.4		54.5	55.1	54.8	55.6	104

NUMBER TESTED IN GRADE 5													
2012			53	52		53	53		22	31	53	1,164	
2013			65	65	3	64	65		35	30	65	1,122	
2014			104	100	2	101	103		55	49	104	2,304	

NUMBER UNSATISFACTORY (Level 1)

Grade	Year	White	African Amer	Hispanic	Econ Disadv	Special Educ	LEP	At Risk	Migrant	Male	Female	All	District	Number Tested (All Students)
5	2012			33	33		33	33		16	17	33	636	53
	2013			49	49	*	48	49		26	23	49	640	65
	2014			47	46	*	46	47		25	22	47	1022	104

NUMBER TESTED IN GRADE 5													
2012			53	52		53	53		22	31	53	1,164	
2013			65	65	3	64	65		35	30	65	1,122	
2014			104	100	2	101	103		55	49	104	2,304	

PERCENTAGE ADVANCED (Level 3)

Grade	Year	White	African Amer	Hispanic	Econ Disadv	Special Educ	LEP	At Risk	Migrant	Male	Female	All	District	Number Tested (All Students)
5	2012			0.0	0.0		0.0	0.0		0.0	0.0	0.0	2.2	53
	2013			0.0	0.0	*	0.0	0.0		0.0	0.0	0.0	1.9	65
	2014			0.0	0.0	*	0.0	0.0		0.0	0.0	0.0	2.9	104

NUMBER TESTED IN GRADE 5													
2012			53	52		53	53		22	31	53	1,164	
2013			65	65	3	64	65		35	30	65	1,122	
2014			104	100	2	101	103		55	49	104	2,304	

AVERAGE PERCENTAGE OF ITEMS CORRECT BY REPORTING CATEGORY

Grade	Year	REPORTING CATEGORY			
		1. Matter and Energy	2. Force, Motion, and Energy	3. Earth and Space	4. Organisms and Environments
5	2012	62.5	63.6	61.9	55.1
	2013	51.2	56.3	51.5	49.8
	2014	60.0	61.3	54.4	59.1

PERCENTAGE SATISFACTORY (Levels 2 or 3)

Grade	Year	White	African Amer	Hispanic	Econ Disadv	Special Educ	LEP	At Risk	Migrant	Male	Female	All	District	Number Tested (All Students)
3	2012			56.5	56.5		56.5	56.5		50.0	60.0	56.5	51.7	23
	2013			*	*		*	*		*	*	*	32.5	2
	2014												35.8	0
4	2012			*	*		*	*		*	*	*	23.7	5
	2013												32.7	0
	2014												25.4	0
5	2012												0.0	0
	2013			*	*		*	*		*		*	23.3	2
	2014												39.7	0
3-5	2012			50.0	50.0		50.0	50.0		36.4	58.8	50.0	39.6	28
	2013			*	*		*	*		*	*	*	31.0	4
	2014												34.8	0

NUMBER TESTED IN GRADES 3-5													
2012			28	28		28	28		11	17	28	682	
2013			4	4		4	4		3	1	4	523	
2014												454	

PERCENTAGE SATISFACTORY (Levels 2 or 3)

Grade	Year	White	African Amer	Hispanic	Econ Disadv	Special Educ	LEP	At Risk	Migrant	Male	Female	All	District	Number Tested (All Students)
6	2012												22.8	0
	2013			0.0	0.0	*	0.0	0.0		0.0	*	0.0	30.6	8
	2014			28.6	28.6		28.6	28.6		*	*	28.6	29.0	7
7	2012			*	*		*			*		*	16.9	2
	2013			*	*		*	*		*	*	*	24.3	4
	2014			*	*		*	*		*	*	*	24.8	4
8	2012			*	*		*	*		*	*	*	0.0	4
	2013			*	*		*			*		*	25.5	1
	2014			33.3	*		33.3	*		*	*	33.3	33.2	6
6-8	2012			0.0	0.0		0.0	*		*	*	0.0	12.7	6
	2013			0.0	0.0	*	0.0	0.0		0.0	*	0.0	26.8	13
	2014			23.5	21.4		23.5	20.0		36.4	0.0	23.5	29.1	17

NUMBER TESTED IN GRADES 6-8													
2012			6	6		6	4			4	2	6	620
2013			12	12	1	13	9			11	2	13	634
2014			17	14		17	15			11	6	17	722

NUMBER UNSATISFACTORY (Level 1)

Grade	Year	White	African Amer	Hispanic	Econ Disadv	Special Educ	LEP	At Risk	Migrant	Male	Female	All	District	Number Tested (All Students)
3	2012			10	10		10	10		4	6	10	221	23
	2013			*	*		*	*		*	*	*	224	2
	2014												199	0
4	2012			*	*		*	*		*	*	*	106	5
	2013												68	0
	2014												53	0
5	2012												85	0
	2013			*	*		*	*		*		*	69	2
	2014												44	0
3-5	2012			14	14		14	14		7	7	14	412	28
	2013			*	*		*	*		*	*	*	361	4
	2014												296	0

NUMBER TESTED IN GRADES 3-5													
2012			28	28		28	28		11	17	28	682	
2013			4	4		4	4		3	1	4	523	
2014												454	

NUMBER UNSATISFACTORY (Level 1)

Grade	Year	White	African Amer	Hispanic	Econ Disadv	Special Educ	LEP	At Risk	Migrant	Male	Female	All	District	Number Tested (All Students)
6	2012												146	0
	2013			8	8	*	8	7		7	*	8	150	8
	2014			5	5		5	5		*	*	5	171	7
7	2012			*	*		*			*		*	177	2
	2013			*	*		*	*		*	*	*	162	4
	2014			*	*		*	*		*	*	*	176	4
8	2012			*	*		*	*		*	*	*	218	4
	2013			*	*		*			*		*	152	1
	2014			4	*		4	*		*	*	4	165	6
6-8	2012			6	6		6	*		*	*	6	541	6
	2013			12	12	*	13	9		11	*	13	464	13
	2014			13	11		13	12		7	6	13	512	17

NUMBER TESTED IN GRADES 6-8													
2012			6	6		6	4			4	2	6	620
2013			12	12	1	13	9			11	2	13	634
2014			17	14		17	15			11	6	17	722

PERCENTAGE ADVANCED (Level 3)

Grade	Year	White	African Amer	Hispanic	Econ Disadv	Special Educ	LEP	At Risk	Migrant	Male	Female	All	District	Number Tested (All Students)
3	2012			0.0	0.0		0.0	0.0		0.0	0.0	0.0	4.6	23
	2013			*	*		*	*		*	*	*	1.5	2
	2014												2.3	0
4	2012			*	*		*	*		*	*	*	1.4	5
	2013												2.0	0
	2014												0.0	0
5	2012												0.0	0
	2013			*	*		*	*		*		*	0.0	2
	2014												0.0	0
3-5	2012			0.0	0.0		0.0	0.0		0.0	0.0	0.0	3.4	28
	2013			*	*		*	*		*	*	*	1.3	4
	2014												1.5	0

NUMBER TESTED IN GRADE 3-5													
2012			28	28		28	28		11	17	28	682	
2013			4	4		4	4		3	1	4	523	
2014												454	

PERCENTAGE ADVANCED (Level 3)

Grade	Year	White	African Amer	Hispanic	Econ Disadv	Special Educ	LEP	At Risk	Migrant	Male	Female	All	District	Number Tested (All Students)
6	2012												1.1	0
	2013			0.0	0.0	*	0.0	0.0		0.0	*	0.0	2.3	8
	2014			0.0	0.0		0.0	0.0		*	*	0.0	3.3	7
7	2012			*	*		*			*		*	0.0	2
	2013			*	*		*	*		*	*	*	0.9	4
	2014			*	*		*	*		*	*	*	0.0	4
8	2012			*	*		*	*		*	*	*	0.0	4
	2013			*	*		*			*		*	0.0	1
	2014			0.0	*		0.0	*		*	*	0.0	0.4	6
6-8	2012			0.0	0.0		0.0	*		*	*	0.0	0.3	6
	2013			0.0	0.0	*	0.0	0.0		0.0	*	0.0	1.1	13
	2014			0.0	0.0		0.0	0.0		0.0	0.0	0.0	1.2	17

NUMBER TESTED IN GRADE 6-8													
2012			6	6		6	4			4	2	6	620
2013			12	12	1	13	9			11	2	13	634
2014			17	14		17	15			11	6	17	722

AVERAGE PERCENTAGE OF ITEMS CORRECT BY REPORTING CATEGORY

Grade	Year	REPORTING CATEGORY				
		1. Numbers, Operations, and Quantitative Reasoning	2. Patterns, Relationships, and Algebraic Reasoning	3. Geometry and Spatial Reasoning	4. Measurement	5. Probability and Statistics
3	2012	51.6	59.2	77.8	56.5	52.2
	2013	*	*	*	*	*
	2014					
4	2012	*	*	*	*	*
	2013					
	2014					
5	2012					
	2013	*	*	*	*	*
	2014					
3-5	2012	49.9	55.2	72.5	56.3	50.0
	2013	*	*	*	*	*
	2014					

AVERAGE PERCENTAGE OF ITEMS CORRECT BY REPORTING CATEGORY

Grade	Year	REPORTING CATEGORY				
		1. Numbers, Operations, and Quantitative Reasoning	2. Patterns, Relationships, and Algebraic Reasoning	3. Geometry and Spatial Reasoning	4. Measurement	5. Probability and Statistics
6	2012					
	2013	29.7	27.1	29.7	17.2	28.1
	2014	38.4	39.3	42.9	37.5	23.2
7	2012	*	*	*	*	*
	2013	*	*	*	*	*
	2014	*	*	*	*	*
8	2012	*	*	*	*	*
	2013	*	*	*	*	*
	2014	33.3	36.9	20.8	38.5	25.0
6-8	2012	41.8	47.3	41.3	56.4	31.7
	2013	27.5	28.5	26.9	20.4	25.0
	2014	31.2	36.4	32.6	34.9	25.4

PERCENTAGE SATISFACTORY (Levels 2 and 3)

Test	Year	White	African Amer	Hispanic	Econ Disadv	Special Educ	LEP	At Risk	Migrant	Male	Female	All	District
ALGEBRA I	2012												42.9
	2013			11.1	11.1		8.3	12.5		9.1	*	8.3	51.2
	2014			28.6	28.6		28.6	28.6		16.7	*	28.6	42.9
Tests Taken	2012												282
	2013			9	9		12	8		11	1	12	320
	2014			7	7		7	7		6	1	7	471

NUMBER UNSATISFACTORY (Level 1)

Test	Year	White	African Amer	Hispanic	Econ Disadv	Special Educ	LEP	At Risk	Migrant	Male	Female	All	District
ALGEBRA I	2012												161
	2013			8	8		11	7		10	*	11	156
	2014			5	5		5	5		5	*	5	269
Tests Taken	2012												282
	2013			9	9		12	8		11	1	12	320
	2014			7	7		7	7		6	1	7	471

PERCENTAGE ADVANCED (Level 3)

Test	Year	White	African Amer	Hispanic	Econ Disadv	Special Educ	LEP	At Risk	Migrant	Male	Female	All	District
ALGEBRA I	2012												2.5
	2013			0.0	0.0		0.0	0.0		0.0	*	0.0	4.1
	2014			0.0	0.0		0.0	0.0		0.0	*	0.0	2.3
Tests Taken	2012												282
	2013			9	9		12	8		11	1	12	320
	2014			7	7		7	7		6	1	7	471

AVERAGE PERCENTAGE OF ITEMS CORRECT BY REPORTING CATEGORY

ALGEBRA I	1. Functional Relationships	2. Properties and Attributes of Functions	3. Linear Functions	4. Linear Equations and Inequalities	5. Quadratic and Other Nonlinear Functions
2012					
2013	41.7	25.7	28.3	27.5	21.3
2014	35.7	35.7	30.5	17.1	42.9

PERCENTAGE SATISFACTORY (Levels 2 or 3)

Grade	Year	White	African Amer	Hispanic	Econ Disadv	Special Educ	LEP	At Risk	Migrant	Male	Female	All	District	Number Tested (All Students)
8	2012			*	*		*	*		*	*	*	14.2	5
	2013			*	*		*			*		*	13.3	1
	2014			0.0	*		0.0	*		*	*	0.0	17.0	6

NUMBER TESTED IN GRADE 8													
2012			5	5		5	4		2	3	5	226	
2013			1	1		1			1		1	210	
2014			6	5		6	4		5	1	6	277	

NUMBER UNSATISFACTORY (Level 1)

Grade	Year	White	African Amer	Hispanic	Econ Disadv	Special Educ	LEP	At Risk	Migrant	Male	Female	All	District	Number Tested (All Students)
8	2012			*	*		*	*		*	*	*	194	5
	2013			*	*		*			*		*	182	1
	2014			6	*		6	*		*	*	6	230	6

NUMBER TESTED IN GRADE 8													
2012			5	5		5	4		2	3	5	226	
2013			1	1		1			1		1	210	
2014			6	5		6	4		5	1	6	277	

PERCENTAGE ADVANCED (Level 3)

Grade	Year	White	African Amer	Hispanic	Econ Disadv	Special Educ	LEP	At Risk	Migrant	Male	Female	All	District	Number Tested (All Students)
8	2012			*	*		*	*		*	*	*	0.0	5
	2013			*	*		*			*		*	0.0	1
	2014			0.0	*		0.0	*		*	*	0.0	0.0	6

NUMBER TESTED IN GRADE 8													
2012			5	5		5	4		2	3	5	226	
2013			1	1		1			1		1	210	
2014			6	5		6	4		5	1	6	277	

AVERAGE PERCENTAGE OF ITEMS CORRECT BY REPORTING CATEGORY

Grade	Year	REPORTING CATEGORY			
		1. Matter and Energy	2. Force, Motion, and Energy	3. Earth and Space	4. Organisms and Environments
8	2012	*	*	*	*
	2013	*	*	*	*
	2014	26.2	34.7	29.8	36.9

PERCENTAGE SATISFACTORY (Levels 2 or 3)

Grade	Year	White	African Amer	Hispanic	Econ Disadv	Special Educ	LEP	At Risk	Migrant	Male	Female	All	District	Number Tested (All Students)
8	2012			*	*		*	*		*	*	*	11.1	5
	2013			*	*		*			*		*	18.6	1
	2014			0.0	*		0.0	*		*	*	0.0	11.0	6

NUMBER TESTED IN GRADE 8													
2012			5	5		5	4		2	3	5	226	
2013			1	1		1			1		1	204	
2014			6	5		6	4		5	1	6	272	

NUMBER UNSATISFACTORY (Level 1)

Grade	Year	White	African Amer	Hispanic	Econ Disadv	Special Educ	LEP	At Risk	Migrant	Male	Female	All	District	Number Tested (All Students)
8	2012			*	*		*	*		*	*	*	201	5
	2013			*	*		*			*		*	166	1
	2014			6	*		6	*		*	*	6	242	6

NUMBER TESTED IN GRADE8													
2012			5	5		5	4		2	3	5	226	
2013			1	1		1			1		1	204	
2014			6	5		6	4		5	1	6	272	

PERCENTAGE ADVANCED (Level 3)

Grade	Year	White	African Amer	Hispanic	Econ Disadv	Special Educ	LEP	At Risk	Migrant	Male	Female	All	District	Number Tested (All Students)
8	2012			*	*		*	*		*	*	*	0.0	5
	2013			*	*		*			*		*	1.0	1
	2014			0.0	*		0.0	*		*	*	0.0	0.4	6

NUMBER TESTED IN GRADE 8													
2012			5	5		5	4		2	3	5	226	
2013			1	1		1			1		1	204	
2014			6	5		6	4		5	1	6	272	

AVERAGE PERCENTAGE OF ITEMS CORRECT BY REPORTING CATEGORY

Grade	Year	REPORTING CATEGORY			
		1. History	2. Geography and Culture	3. Government and Citizenship	4. Economics, Science, Technology, and Society
8	2012	*	*	*	*
	2013	*	*	*	*
	2014	30.0	36.1	36.1	18.8

PERCENTAGE SATISFACTORY (Levels 2 or 3)

Grade	Year	White	African Amer	Hispanic	Econ Disadv	Special Educ	LEP	At Risk	Migrant	Male	Female	All	District	Number Tested (All Students)
3	2012	*	*	*	66.7	66.7	*	70.0		55.6	*	66.7	54.7	12
	2013	*	*	*	50.0	50.0	*	57.1		33.3	*	50.0	67.5	10
	2014	*	*	*	50.0	55.6	*	71.4		66.7	*	55.6	63.3	9
4	2012		*	*	66.7	66.7		*		*	*	66.7	58.0	6
	2013	*	*	*	36.4	41.7	*	42.9		37.5	*	41.7	60.2	12
	2014	*	*	37.5	63.6	60.0	*	64.3		33.3	100.0	60.0	62.9	15
5	2012	*	*	66.7	90.9	83.3	*	80.0		66.7	100.0	83.3	67.0	12
	2013		83.3	100.0	92.3	92.3	*	88.9		88.9	*	92.3	86.5	13
	2014	83.3	100.0	100.0	95.7	96.0	100.0	100.0		100.0	87.5	96.0	86.3	25
3-5	2012	71.4	75.0	72.7	75.9	73.3	75.0	78.3		63.2	90.9	73.3	61.0	30
	2013	*	75.0	62.5	61.8	62.9	72.7	65.2		56.5	75.0	62.9	73.4	35
	2014	81.8	92.9	65.2	78.6	77.6	69.2	83.7		75.0	82.4	77.6	73.2	49

NUMBER TESTED IN GRADES 3-5													
2012	7	12	11	29	30	8	23		19	11	30	1,384	
2013	5	12	16	34	35	11	23		23	12	35	1,434	
2014	11	14	23	42	49	13	43		32	17	49	1,362	

PERCENTAGE SATISFACTORY (Levels 2 or 3)

Grade	Year	White	African Amer	Hispanic	Econ Disadv	Special Educ	LEP	At Risk	Migrant	Male	Female	All	District	Number Tested (All Students)
6	2012	*	*	85.7	86.7	87.5	83.3	85.7		90.0	83.3	87.5	65.5	16
	2013		*	*	50.0	42.9	*	33.3		50.0	*	42.9	55.9	7
	2014	*	*	66.7	71.4	66.7	*	75.0		66.7	*	66.7	51.6	9
7	2012	*	*	33.3	30.8	35.7	*	25.0		18.2	*	35.7	57.3	14
	2013	*	*	*	*	83.3	*	83.3		83.3		83.3	61.0	6
	2014	*	*	*	66.7	69.2	*	66.7		62.5	*	69.2	55.4	13
8	2012	33.3	28.6	57.1	35.3	40.0	50.0	42.1		33.3	50.0	40.0	58.0	20
	2013	*	*	*	*	*	*	*		*		*	74.5	5
	2014	*	*	*	80.0	75.0	*	72.7		75.0	*	75.0	75.0	12
6-8	2012	57.1	43.8	60.0	51.1	54.0	58.8	51.1		45.5	70.6	54.0	60.3	50
	2013	*	*	60.0	68.8	61.1	62.5	58.8		64.7	*	61.1	63.6	18
	2014	55.6	80.0	73.3	72.4	70.6	63.6	71.4		68.2	75.0	70.6	60.0	34

NUMBER TESTED IN GRADES 6-8													
2012	14	16	20	45	50	17	45		33	17	50	1,571	
2013	3	5	10	16	18	8	17		17	1	18	1,687	
2014	9	10	15	29	34	11	28		22	12	34	1,689	

NUMBER UNSATISFACTORY (Level 1)

Grade	Year	White	African Amer	Hispanic	Econ Disadv	Special Educ	LEP	At Risk	Migrant	Male	Female	All	District	Number Tested (All Students)
3	2012	*	*	*	4	4	*	3		4	*	4	149	12
	2013	*	*	*	5	5	*	3		4	*	5	114	10
	2014	*	*	*	4	4	*	2		2	*	4	114	9
4	2012		*	*	2	2		*		*	*	2	201	6
	2013	*	*	*	7	7	*	4		5	*	7	184	12
	2014	*	*	5	4	6	*	5		6	0	6	170	15
5	2012	*	*	2	1	2	*	2		2	0	2	190	12
	2013		1	0	1	1	*	1		1	*	1	84	13
	2014	1	0	0	1	1	0	0		0	1	1	81	25
3-5	2012	2	3	3	7	8	2	5		7	1	8	540	30
	2013	*	3	6	13	13	3	8		10	3	13	382	35
	2014	2	1	8	9	11	4	7		8	3	11	365	49

NUMBER TESTED IN GRADES 3-5													
2012	7	12	11	29	30	8	23		19	11	30	1,384	
2013	5	12	16	34	35	11	23		23	12	35	1,434	
2014	11	14	23	42	49	13	43		32	17	49	1,362	

NUMBER UNSATISFACTORY (Level 1)

Grade	Year	White	African Amer	Hispanic	Econ Disadv	Special Educ	LEP	At Risk	Migrant	Male	Female	All	District	Number Tested (All Students)
6	2012	*	*	1	2	2	1	2		1	1	2	181	16
	2013		*	*	3	4	*	4		3	*	4	270	7
	2014	*	*	2	2	3	*	2		2	*	3	281	9
7	2012	*	*	4	9	9	*	9		9	*	9	244	14
	2013	*	*	*	*	1	*	1		1		1	202	6
	2014	*	*	*	4	4	*	3		3	*	4	266	13
8	2012	4	5	3	11	12	3	11		8	4	12	199	20
	2013	*	*	*	*	*	*	*		*		*	142	5
	2014	*	*	*	2	3	*	3		2	*	3	128	12
6-8	2012	6	9	8	22	23	7	22		18	5	23	624	50
	2013	*	*	4	5	7	3	7		6	*	7	614	18
	2014	4	2	4	8	10	4	8		7	3	10	675	34

NUMBER TESTED IN GRADES 6-8													
2012	14	16	20	45	50	17	45		33	17	50	1,571	
2013	3	5	10	16	18	8	17		17	1	18	1,687	
2014	9	10	15	29	34	11	28		22	12	34	1,689	

PERCENTAGE ADVANCED (Level 3)

Grade	Year	White	African Amer	Hispanic	Econ Disadv	Special Educ	LEP	At Risk	Migrant	Male	Female	All	District	Number Tested (All Students)
3	2012	*	*	*	0.0	0.0	*	0.0		0.0	*	0.0	3.3	12
	2013	*	*	*	10.0	10.0	*	14.3		0.0	*	10.0	4.3	10
	2014	*	*	*	0.0	0.0	*	0.0		0.0	*	0.0	4.8	9
4	2012		*	*	16.7	16.7		*		*	*	16.7	3.3	6
	2013	*	*	*	0.0	0.0	*	0.0		0.0	*	0.0	3.5	12
	2014	*	*	12.5	18.2	13.3	*	14.3		11.1	16.7	13.3	6.3	15
5	2012	*	*	0.0	9.1	8.3	*	10.0		0.0	16.7	8.3	4.9	12
	2013		16.7	14.3	15.4	15.4	*	22.2		11.1	*	15.4	7.4	13
	2014	50.0	0.0	0.0	13.0	12.0	0.0	13.6		17.6	0.0	12.0	10.3	25
3-5	2012	0.0	8.3	9.1	6.9	6.7	0.0	8.7		5.3	9.1	6.7	4.0	30
	2013	*	8.3	6.3	8.8	8.6	9.1	13.0		4.3	16.7	8.6	5.4	35
	2014	36.4	0.0	4.3	11.9	10.2	7.7	11.6		12.5	5.9	10.2	7.7	49

NUMBER TESTED IN GRADE 3-5													
2012	7	12	11	29	30	8	23		19	11	30	1,384	
2013	5	12	16	34	35	11	23		23	12	35	1,434	
2014	11	14	23	42	49	13	43		32	17	49	1,362	

PERCENTAGE ADVANCED (Level 3)

Grade	Year	White	African Amer	Hispanic	Econ Disadv	Special Educ	LEP	At Risk	Migrant	Male	Female	All	District	Number Tested (All Students)
6	2012	*	*	0.0	0.0	0.0	0.0	0.0		0.0	0.0	0.0	3.6	16
	2013		*	*	0.0	0.0	*	0.0		0.0	*	0.0	3.1	7
	2014	*	*	0.0	14.3	11.1	*	12.5		0.0	*	11.1	2.9	9
7	2012	*	*	0.0	0.0	0.0	*	0.0		0.0	*	0.0	1.0	14
	2013	*	*	*	*	0.0	*	0.0		0.0		0.0	3.5	6
	2014	*	*	*	0.0	0.0	*	0.0		0.0	*	0.0	3.9	13
8	2012	0.0	0.0	0.0	0.0	0.0	0.0	0.0		0.0	0.0	0.0	1.1	20
	2013	*	*	*	*	*	*	*		*		*	2.5	5
	2014	*	*	*	0.0	0.0	*	0.0		0.0	*	0.0	2.9	12
6-8	2012	0.0	0.0	0.0	0.0	0.0	0.0	0.0		0.0	0.0	0.0	1.9	50
	2013	*	*	0.0	0.0	0.0	0.0	0.0		0.0	*	0.0	3.0	18
	2014	0.0	10.0	0.0	3.4	2.9	0.0	3.6		0.0	8.3	2.9	3.3	34

NUMBER TESTED IN GRADE 6-8													
2012	14	16	20	45	50	17	45		33	17	50	1,571	
2013	3	5	10	16	18	8	17		17	1	18	1,687	
2014	9	10	15	29	34	11	28		22	12	34	1,689	

AVERAGE PERCENTAGE OF ITEMS CORRECT BY REPORTING CATEGORY

Grade	Year	REPORTING CATEGORY		
		1. Understanding Across Genres (GR 3-5) 1. Understanding/Analysis Across Genres (GR 6-8)	2. Understanding/Analysis of Literary Texts	3. Understanding/Analysis of Informational Texts
3	2012	51.7	57.1	46.2
	2013	44.0	61.4	49.2
	2014	68.9	49.2	51.3
4	2012	60.4	66.7	57.7
	2013	42.7	51.8	49.4
	2014	48.3	59.5	53.8
5	2012	55.2	58.9	55.4
	2013	55.8	64.6	62.1
	2014	56.0	58.9	62.6
3-5	2012	54.8	59.7	52.1
	2013	47.9	59.3	54.1
	2014	56.0	57.3	57.8

AVERAGE PERCENTAGE OF ITEMS CORRECT BY REPORTING CATEGORY

Grade	Year	REPORTING CATEGORY		
		1. Understanding Across Genres (GR 3-5) 1. Understanding/Analysis Across Genres (GR 6-8)	2. Understanding/Analysis of Literary Texts	3. Understanding/Analysis of Informational Texts
6	2012	44.5	60.2	50.0
	2013	46.4	39.3	53.1
	2014	61.1	52.8	50.8
7	2012	50.0	38.2	40.5
	2013	64.6	56.9	54.4
	2014	56.7	57.9	47.7
8	2012	54.4	49.4	44.1
	2013	*	*	*
	2014	70.8	64.4	57.3
6-8	2012	50.0	49.7	45.0
	2013	54.2	50.0	52.0
	2014	62.9	58.8	51.9

PERCENTAGE SATISFACTORY (Levels 2 and 3)

Test	Year	White	African Amer	Hispanic	Econ Disadv	Special Educ	LEP	At Risk	Migrant	Male	Female	All	District
ENGLISH I	2012												
	2013												
	2014	*	*	*	0.0	11.1	*	11.1		0.0	*	11.1	50.6
Tests Taken	2012												
	2013												
	2014	1	3	4	8	9	3	9		6	3	9	405
ENGLISH II	2012												
	2013												
	2014		*	*	33.3	50.0	*	50.0		*	*	50.0	65.3
Tests Taken	2012												
	2013												
	2014		4	3	6	8	2	8		5	3	8	340

NUMBER UNSATISFACTORY (Level 1)

Test	Year	White	African Amer	Hispanic	Econ Disadv	Special Educ	LEP	At Risk	Migrant	Male	Female	All	District
ENGLISH I	2012												
	2013												
	2014	*	*	*	8	8	*	8		6	*	8	200
Tests Taken	2012												
	2013												
	2014	1	3	4	8	9	3	9		6	3	9	405
ENGLISH II	2012												
	2013												
	2014		*	*	4	4	*	4		*	*	4	118
Tests Taken	2012												
	2013												
	2014		4	3	6	8	2	8		5	3	8	340

PERCENTAGE ADVANCED (Level 3)

Test	Year	White	African Amer	Hispanic	Econ Disadv	Special Educ	LEP	At Risk	Migrant	Male	Female	All	District
ENGLISH I	2012												
	2013												
	2014	*	*	*	0.0	0.0	*	0.0		0.0	*	0.0	3.5
Tests Taken	2012												
	2013												
	2014	1	3	4	8	9	3	9		6	3	9	405
ENGLISH II	2012												
	2013												
	2014		*	*	0.0	0.0	*	0.0		*	*	0.0	12.6
Tests Taken	2012												
	2013												
	2014		4	3	6	8	2	8		5	3	8	340

AVERAGE PERCENTAGE OF ITEMS CORRECT BY REPORTING CATEGORY

ENGLISH I	1. Understanding & Analysis Across Genres	2. Understanding & Analysis of Literary Texts	3. Understanding & Analysis of Informational Texts	4. Literary Composition ¹	5. Revision	6. Editing
2012						
2013						
2014	55.6	39.5	39.5	1.6	35.8	48.1

ENGLISH II	1. Understanding & Analysis Across Genres	2. Understanding & Analysis of Literary Texts	3. Understanding & Analysis of Informational Texts	4. Expository Composition ¹	5. Revision	6. Editing
2012						
2013						
2014	56.3	41.7	56.9	2.4	37.5	50.0

¹Average score points (range 0-6). A STAAR M composition is rated twice on a scale of 0 to 3, and the ratings are summed to determine score points for the composition. Score point scale: 0=Non-scorable; 2=Very Limited; 3=between Very Limited and Basic; 4=Basic; 5=between Basic and Satisfactory; 6=Satisfactory

PERCENTAGE SATISFACTORY (Levels 2 or 3)

Grade	Year	White	African Amer	Hispanic	Econ Disadv	Special Educ	LEP	At Risk	Migrant	Male	Female	All	District	Number Tested (All Students)
4	2012		66.7	*	75.0	75.0	*	*		83.3	*	75.0	57.5	8
	2013	*	*	*	61.5	57.1	*	71.4		60.0	*	57.1	48.9	14
	2014	*	*	25.0	38.5	37.5	*	33.3		25.0	50.0	37.5	47.7	16

NUMBER TESTED IN GRADE 4													
2012		6	2	8	8	1	4		6	2	8	475	
2013	3	4	4	13	14	4	7		10	4	14	452	
2014	3	4	8	13	16	3	15		8	8	16	449	

PERCENTAGE SATISFACTORY (Levels 2 or 3)

Grade	Year	White	African Amer	Hispanic	Econ Disadv	Special Educ	LEP	At Risk	Migrant	Male	Female	All	District	Number Tested (All Students)
7	2012	*	*	50.0	42.9	46.7	*	38.5		36.4	*	46.7	56.7	15
	2013	*	*	*	66.7	57.1	*	57.1		66.7	*	57.1	63.7	7
	2014	*	*	*	63.6	66.7	*	75.0		57.1	*	66.7	62.9	12

NUMBER TESTED IN GRADE 7													
2012	4	5	6	14	15	5	13		11	4	15	586	
2013	2	1	4	6	7	3	7		6	1	7	509	
2014	4	5	3	11	12	2	8		7	5	12	599	

NUMBER UNSATISFACTORY (Level 1)

Grade	Year	White	African Amer	Hispanic	Econ Disadv	Special Educ	LEP	At Risk	Migrant	Male	Female	All	District	Number Tested (All Students)
4	2012		2	*	2	2	*	*		1	*	2	202	8
	2013	*	*	*	5	6	*	2		4	*	6	231	14
	2014	*	*	6	8	10	*	10		6	4	10	235	16

NUMBER TESTED IN GRADE 4													
2012		6	2	8	8	1	4		6	2	8	475	
2013	3	4	4	13	14	4	7		10	4	14	452	
2014	3	4	8	13	16	3	15		8	8	16	449	

NUMBER UNSATISFACTORY (Level 1)

Grade	Year	White	African Amer	Hispanic	Econ Disadv	Special Educ	LEP	At Risk	Migrant	Male	Female	All	District	Number Tested (All Students)
7	2012	*	*	3	8	8	*	8		7	*	8	254	15
	2013	*	*	*	2	3	*	3		2	*	3	185	7
	2014	*	*	*	4	4	*	2		3	*	4	222	12

NUMBER TESTED IN GRADE 7													
2012	4	5	6	14	15	5	13		11	4	15	586	
2013	2	1	4	6	7	3	7		6	1	7	509	
2014	4	5	3	11	12	2	8		7	5	12	599	

PERCENTAGE ADVANCED (Level 3)

Grade	Year	White	African Amer	Hispanic	Econ Disadv	Special Educ	LEP	At Risk	Migrant	Male	Female	All	District	Number Tested (All Students)
4	2012		16.7	*	25.0	25.0	*	*		33.3	*	25.0	5.3	8
	2013	*	*	*	0.0	0.0	*	0.0		0.0	*	0.0	8.6	14
	2014	*	*	0.0	0.0	0.0	*	0.0		0.0	0.0	0.0	8.5	16

NUMBER TESTED IN GRADE 4													
2012		6	2	8	8	1	4		6	2	8	475	
2013	3	4	4	13	14	4	7		10	4	14	452	
2014	3	4	8	13	16	3	15		8	8	16	449	

PERCENTAGE ADVANCED (Level 3)

Grade	Year	White	African Amer	Hispanic	Econ Disadv	Special Educ	LEP	At Risk	Migrant	Male	Female	All	District	Number Tested (All Students)
7	2012	*	*	0.0	0.0	0.0	*	0.0		0.0	*	0.0	2.7	15
	2013	*	*	*	16.7	14.3	*	14.3		16.7	*	14.3	6.3	7
	2014	*	*	*	18.2	16.7	*	25.0		14.3	*	16.7	6.3	12

NUMBER TESTED IN GRADE 7													
2012	4	5	6	14	15	5	13		11	4	15	586	
2013	2	1	4	6	7	3	7		6	1	7	509	
2014	4	5	3	11	12	2	8		7	5	12	599	

AVERAGE PERCENTAGE OF ITEMS CORRECT BY REPORTING CATEGORY

Grade	Year	REPORTING CATEGORY		
		1. Composition ¹ GR 4: Personal Narrative GR 7: Expository	2. Revision	3. Editing
4	2012	1.7	53.6	50.8
	2013	2.1	49.0	55.2
	2014	1.9	48.2	50.0
7	2012	1.0	40.5	34.0
	2013	2.6	56.0	55.6
	2014	2.8	52.6	49.6

¹Average score points (range 0-6). A STAAR M composition is rated twice on a scale of 0 to 3, and the ratings are summed to determine score points for the composition. Score point scale: 0=Non-scorable; 2=Very Limited; 3=between Very Limited and Basic; 4=Basic; 5=between Basic and Satisfactory; 6=Satisfactory

PERCENTAGE SATISFACTORY (Levels 2 or 3)

Grade	Year	White	African Amer	Hispanic	Econ Disadv	Special Educ	LEP	At Risk	Migrant	Male	Female	All	District	Number Tested (All Students)
3	2012	*	*	*	64.3	64.3	*	66.7		70.0	*	64.3	52.0	14
	2013	*	*	*	66.7	66.7	*	66.7		66.7	*	66.7	64.4	9
	2014	*	*	50.0	62.5	66.7	*	71.4		66.7	*	66.7	64.2	9
4	2012		*	*	62.5	62.5	*	*		*	*	62.5	61.2	8
	2013	*	*	*	33.3	30.8	*	50.0		44.4	*	30.8	61.7	13
	2014	*	*	30.0	46.2	41.2	*	43.8		27.3	66.7	41.2	70.3	17
5	2012	*	*	*	90.0	83.3	*	90.0		*	100.0	83.3	60.6	12
	2013	*	66.7	75.0	73.3	73.3	71.4	72.7		66.7	*	73.3	77.2	15
	2014	*	87.5	72.7	83.3	80.0	75.0	86.4		80.0	80.0	80.0	79.1	25
3-5	2012	71.4	78.6	61.5	71.9	70.6	66.7	74.1		65.0	78.6	70.6	58.7	34
	2013	33.3	50.0	72.2	58.3	56.8	64.3	64.0		59.3	50.0	56.8	69.1	37
	2014	77.8	78.6	51.9	68.9	64.7	58.8	68.9		59.4	73.7	64.7	72.7	51

NUMBER TESTED IN GRADES 3-5													
2012	7	14	13	32	34	12	27			20	14	34	1,354
2013	6	12	18	36	37	14	25			27	10	37	1,433
2014	9	14	27	45	51	17	45			32	19	51	1,378

PERCENTAGE SATISFACTORY (Levels 2 or 3)

Grade	Year	White	African Amer	Hispanic	Econ Disadv	Special Educ	LEP	At Risk	Migrant	Male	Female	All	District	Number Tested (All Students)
6	2012	*	16.7	71.4	50.0	52.9	*	60.0		55.6	50.0	52.9	46.2	17
	2013		*	*	0.0	0.0	*	0.0		0.0	*	0.0	54.3	7
	2014	*	*	16.7	50.0	40.0	*	44.4		42.9	*	40.0	52.0	10
7	2012	*	*	66.7	30.8	35.7	*	33.3		27.3	*	35.7	50.5	14
	2013	*	*	*	*	50.0	*	50.0		50.0		50.0	49.4	6
	2014	*	*	*	50.0	53.8	*	44.4		50.0	*	53.8	48.8	13
8	2012	16.7	40.0	0.0	20.0	21.7	0.0	19.0		15.4	30.0	21.7	46.2	23
	2013	*	*	*	*	*	*	*		*		*	71.4	5
	2014	*	*	*	70.0	66.7	*	63.6		62.5	*	66.7	71.0	12
6-8	2012	28.6	30.0	45.0	32.7	35.2	50.0	35.4		30.3	42.9	35.2	47.7	54
	2013	*	*	30.0	31.3	27.8	25.0	29.4		29.4	*	27.8	58.5	18
	2014	55.6	63.6	46.7	56.7	54.3	45.5	51.7		52.2	58.3	54.3	56.7	35

NUMBER TESTED IN GRADES 6-8													
2012	14	20	20	49	54	16	48			33	21	54	1,554
2013	3	5	10	16	18	8	17			17	1	18	1,659
2014	9	11	15	30	35	11	29			23	12	35	1,684

NUMBER UNSATISFACTORY (Level 1)

Grade	Year	White	African Amer	Hispanic	Econ Disadv	Special Educ	LEP	At Risk	Migrant	Male	Female	All	District	Number Tested (All Students)
3	2012	*	*	*	5	5	*	4		3	*	5	157	14
	2013	*	*	*	3	3	*	2		2	*	3	120	9
	2014	*	*	3	3	3	*	2		2	*	3	113	9
4	2012		*	*	3	3	*	*		*	*	3	182	8
	2013	*	*	*	8	9	*	4		5	*	9	181	13
	2014	*	*	7	7	10	*	9		8	2	10	138	17
5	2012	*	*	*	1	2	*	1		*	0	2	220	12
	2013	*	2	2	4	4	2	3		4	*	4	142	15
	2014	*	1	3	4	5	2	3		3	2	5	125	25
3-5	2012	2	3	5	9	10	4	7		7	3	10	559	34
	2013	4	6	5	15	16	5	9		11	5	16	443	37
	2014	2	3	13	14	18	7	14		13	5	18	376	51

NUMBER TESTED IN GRADES 3-5													
2012	7	14	13	32	34	12	27			20	14	34	1,354
2013	6	12	18	36	37	14	25			27	10	37	1,433
2014	9	14	27	45	51	17	45			32	19	51	1,378

NUMBER UNSATISFACTORY (Level 1)

Grade	Year	White	African Amer	Hispanic	Econ Disadv	Special Educ	LEP	At Risk	Migrant	Male	Female	All	District	Number Tested (All Students)
6	2012	*	5	2	8	8	*	6		4	4	8	276	17
	2013		*	*	6	7	*	6		6	*	7	272	7
	2014	*	*	5	4	6	*	5		4	*	6	271	10
7	2012	*	*	2	9	9	*	8		8	*	9	276	14
	2013	*	*	*	*	3	*	3		3		3	257	6
	2014	*	*	*	6	6	*	5		4	*	6	310	13
8	2012	5	6	7	16	18	6	17		11	7	18	260	23
	2013	*	*	*	*	*	*	*		*		*	159	5
	2014	*	*	*	3	4	*	4		3	*	4	149	12
6-8	2012	10	14	11	33	35	8	31		23	12	35	812	54
	2013	*	*	7	11	13	6	12		12	*	13	688	18
	2014	4	4	8	13	16	6	14		11	5	16	730	35

NUMBER TESTED IN GRADES 6-8													
2012	14	20	20	49	54	16	48		33	21	54	1,554	
2013	3	5	10	16	18	8	17		17	1	18	1,659	
2014	9	11	15	30	35	11	29		23	12	35	1,684	

PERCENTAGE ADVANCED (Level 3)

Grade	Year	White	African Amer	Hispanic	Econ Disadv	Special Educ	LEP	At Risk	Migrant	Male	Female	All	District	Number Tested (All Students)
3	2012	*	*	*	0.0	0.0	*	0.0		0.0	*	0.0	4.0	14
	2013	*	*	*	0.0	0.0	*	0.0		0.0	*	0.0	7.4	9
	2014	*	*	0.0	0.0	0.0	*	0.0		0.0	*	0.0	7.6	9
4	2012		*	*	0.0	0.0	*	*		*	*	0.0	1.7	8
	2013	*	*	*	8.3	7.7	*	12.5		11.1	*	7.7	4.7	13
	2014	*	*	0.0	0.0	0.0	*	0.0		0.0	0.0	0.0	6.5	17
5	2012	*	*	*	0.0	0.0	*	0.0		*	0.0	0.0	0.7	12
	2013	*	16.7	0.0	6.7	6.7	0.0	0.0		8.3	*	6.7	3.9	15
	2014	*	0.0	9.1	4.2	4.0	12.5	4.5		6.7	0.0	4.0	6.0	25
3-5	2012	0.0	0.0	0.0	0.0	0.0	0.0	0.0		0.0	0.0	0.0	1.8	34
	2013	0.0	8.3	5.6	5.6	5.4	7.1	4.0		7.4	0.0	5.4	5.0	37
	2014	0.0	0.0	3.7	2.2	2.0	5.9	2.2		3.1	0.0	2.0	6.5	51

NUMBER TESTED IN GRADE 3-5													
2012	7	14	13	32	34	12	27			20	14	34	1,354
2013	6	12	18	36	37	14	25			27	10	37	1,433
2014	9	14	27	45	51	17	45			32	19	51	1,378

PERCENTAGE ADVANCED (Level 3)

Grade	Year	White	African Amer	Hispanic	Econ Disadv	Special Educ	LEP	At Risk	Migrant	Male	Female	All	District	Number Tested (All Students)
6	2012	*	0.0	0.0	0.0	0.0	*	0.0		0.0	0.0	0.0	5.5	17
	2013		*	*	0.0	0.0	*	0.0		0.0	*	0.0	4.9	7
	2014	*	*	0.0	0.0	0.0	*	0.0		0.0	*	0.0	3.4	10
7	2012	*	*	0.0	0.0	0.0	*	0.0		0.0	*	0.0	1.1	14
	2013	*	*	*	*	0.0	*	0.0		0.0		0.0	3.0	6
	2014	*	*	*	0.0	0.0	*	0.0		0.0	*	0.0	2.3	13
8	2012	0.0	0.0	0.0	0.0	0.0	0.0	0.0		0.0	0.0	0.0	1.2	23
	2013	*	*	*	*	*	*	*		*		*	2.2	5
	2014	*	*	*	0.0	0.0	*	0.0		0.0	*	0.0	1.9	12
6-8	2012	0.0	0.0	0.0	0.0	0.0	0.0	0.0		0.0	0.0	0.0	2.6	54
	2013	*	*	0.0	0.0	0.0	0.0	0.0		0.0	*	0.0	3.4	18
	2014	0.0	0.0	0.0	0.0	0.0	0.0	0.0		0.0	0.0	0.0	2.6	35

NUMBER TESTED IN GRADE 6-8													
2012	14	20	20	49	54	16	48		33	21	54	1,554	
2013	3	5	10	16	18	8	17		17	1	18	1,659	
2014	9	11	15	30	35	11	29		23	12	35	1,684	

AVERAGE PERCENTAGE OF ITEMS CORRECT BY REPORTING CATEGORY

Grade	Year	REPORTING CATEGORY				
		1. Numbers, Operations, and Quantitative Reasoning	2. Patterns, Relationships, and Algebraic Reasoning	3. Geometry and Spatial Reasoning	4. Measurement	5. Probability and Statistics
3	2012	45.6	51.2	53.1	58.3	52.9
	2013	62.4	61.1	66.7	40.7	73.3
	2014	60.7	46.3	61.9	51.9	57.8
4	2012	46.2	50.0	45.0	41.7	56.3
	2013	53.8	41.5	43.8	37.2	38.5
	2014	48.0	55.3	48.8	44.1	50.0
5	2012	57.1	41.7	55.6	69.4	48.1
	2013	52.9	49.3	46.7	70.0	50.4
	2014	56.0	55.2	59.3	56.7	48.4
3-5	2012	49.8	47.5	52.0	58.3	52.0
	2013	55.5	49.5	50.5	51.4	51.8
	2014	54.1	53.7	56.3	51.6	50.6

AVERAGE PERCENTAGE OF ITEMS CORRECT BY REPORTING CATEGORY

Grade	Year	REPORTING CATEGORY				
		1. Numbers, Operations, and Quantitative Reasoning	2. Patterns, Relationships, and Algebraic Reasoning	3. Geometry and Spatial Reasoning	4. Measurement	5. Probability and Statistics
6	2012	45.0	31.8	41.2	38.2	47.1
	2013	36.7	32.9	42.9	19.0	28.6
	2014	44.3	45.0	58.3	18.3	46.7
7	2012	35.1	36.4	31.3	32.1	42.0
	2013	40.9	43.3	58.3	30.6	43.8
	2014	51.0	47.7	49.0	46.2	42.3
8	2012	31.7	37.9	30.4	39.6	37.5
	2013	*	*	*	*	*
	2014	46.7	52.3	40.3	43.3	59.4
6-8	2012	36.8	35.6	34.0	37.2	41.7
	2013	36.8	40.4	49.1	29.8	36.8
	2014	47.6	48.5	48.7	37.2	49.4

PERCENTAGE SATISFACTORY (Levels 2 or 3)

Grade	Year	White	African Amer	Hispanic	Econ Disadv	Special Educ	LEP	At Risk	Migrant	Male	Female	All	District	Number Tested (All Students)
5	2012	*	*	*	90.0	81.8	*	77.8		*	100.0	81.8	48.8	11
	2013		*	85.7	81.8	81.8	*	75.0		77.8	*	81.8	58.1	11
	2014	*	*	55.6	57.9	55.0	71.4	57.9		66.7	*	55.0	55.5	20

NUMBER TESTED IN GRADE 5													
2012	5	4	5	10	11	4	9		5	6	11	531	
2013		4	7	11	11	5	8		9	2	11	540	
2014	5	5	9	19	20	7	19		15	5	20	501	

PERCENTAGE SATISFACTORY (Levels 2 or 3)

Grade	Year	White	African Amer	Hispanic	Econ Disadv	Special Educ	LEP	At Risk	Migrant	Male	Female	All	District	Number Tested (All Students)
8	2012	*	57.1	28.6	43.8	42.1	33.3	41.2		33.3	57.1	42.1	58.2	19
	2013	*	*	*	*	*	*	*		*		*	59.3	4
	2014	*	*	*	90.0	83.3	*	90.0		87.5	*	83.3	63.5	12

NUMBER TESTED IN GRADE 8													
2012	4	7	7	16	19	6	17		12	7	19	457	
2013	2	1	1	4	4	1	4		4		4	526	
2014	4	3	5	10	12	3	10		8	4	12	474	

NUMBER UNSATISFACTORY (Level 1)

Grade	Year	White	African Amer	Hispanic	Econ Disadv	Special Educ	LEP	At Risk	Migrant	Male	Female	All	District	Number Tested (All Students)
5	2012	*	*	*	1	2	*	2		*	0	2	272	11
	2013		*	1	2	2	*	2		2	*	2	226	11
	2014	*	*	4	8	9	2	8		5	*	9	223	20

NUMBER TESTED IN GRADE 5													
2012	5	4	5	10	11	4	9		5	6	11	531	
2013		4	7	11	11	5	8		9	2	11	540	
2014	5	5	9	19	20	7	19		15	5	20	501	

NUMBER UNSATISFACTORY (Level 1)

Grade	Year	White	African Amer	Hispanic	Econ Disadv	Special Educ	LEP	At Risk	Migrant	Male	Female	All	District	Number Tested (All Students)
8	2012	*	3	5	9	11	4	10		8	3	11	191	19
	2013	*	*	*	*	*	*	*		*		*	214	4
	2014	*	*	*	1	2	*	1		1	*	2	173	12

NUMBER TESTED IN GRADE 8													
2012	4	7	7	16	19	6	17		12	7	19	457	
2013	2	1	1	4	4	1	4		4		4	526	
2014	4	3	5	10	12	3	10		8	4	12	474	

PERCENTAGE ADVANCED (Level 3)

Grade	Year	White	African Amer	Hispanic	Econ Disadv	Special Educ	LEP	At Risk	Migrant	Male	Female	All	District	Number Tested (All Students)
5	2012	*	*	*	0.0	0.0	*	0.0		*	0.0	0.0	6.2	11
	2013		*	14.3	9.1	9.1	*	12.5		11.1	*	9.1	6.1	11
	2014	*	*	0.0	5.3	5.0	0.0	5.3		6.7	*	5.0	7.6	20

NUMBER TESTED IN GRADE 5													
2012	2	4	5	10	11	4	9		5	6	11	531	
2013		4	7	11	11	5	8		9	2	11	540	
2014	5	5	9	19	20	7	19		15	5	20	501	

PERCENTAGE ADVANCED (Level 3)

Grade	Year	White	African Amer	Hispanic	Econ Disadv	Special Educ	LEP	At Risk	Migrant	Male	Female	All	District	Number Tested (All Students)
8	2012	*	0.0	0.0	0.0	0.0	0.0	0.0		0.0	0.0	0.0	0.4	19
	2013	*	*	*	*	*	*	*		*		*	2.5	4
	2014	*	*	*	10.0	8.3	*	10.0		12.5	*	8.3	3.8	12

NUMBER TESTED IN GRADE 8													
2012	5	7	7	16	19	6	17		12	7	19	457	
2013	2	1	1	4	4	1	4		4		4	526	
2014	4	3	5	10	12	3	10		8	4	12	474	

AVERAGE PERCENTAGE OF ITEMS CORRECT BY REPORTING CATEGORY

Grade	Year	REPORTING CATEGORY			
		1. Matter and Energy	2. Force, Motion, and Energy	3. Earth and Space	4. Organisms and Environments
5	2012	74.2	69.3	68.2	65.3
	2013	69.7	79.5	69.1	70.2
	2014	61.7	73.1	57.0	69.1
8	2012	38.3	44.2	46.9	42.6
	2013	*	*	*	*
	2014	69.7	75.0	68.9	64.4

PERCENTAGE SATISFACTORY (Levels 2 or 3)

Grade	Year	White	African Amer	Hispanic	Econ Disadv	Special Educ	LEP	At Risk	Migrant	Male	Female	All	District	Number Tested (All Students)
8	2012	*	33.3	14.3	26.7	27.8	16.7	31.3		27.3	28.6	27.8	52.3	18
	2013	*	*	*	*	*	*	*		*		*	59.5	4
	2014	*	*	*	66.7	72.7	*	77.8		75.0	*	72.7	59.3	11

NUMBER TESTED IN GRADE 8													
2012	5	6	7	15	18	6	16		11	7	18	451	
2013	2	1	1	4	4	1	4		4		4	516	
2014	3	3	5	9	11	3	9		8	3	11	479	

NUMBER UNSATISFACTORY (Level 1)

Grade	Year	White	African Amer	Hispanic	Econ Disadv	Special Educ	LEP	At Risk	Migrant	Male	Female	All	District	Number Tested (All Students)
8	2012	*	4	6	11	13	5	11		8	5	13	215	18
	2013	*	*	*	*	*	*	*		*		*	209	4
	2014	*	*	*	3	3	*	2		2	*	3	195	11

NUMBER TESTED IN GRADE8													
2012	5	6	7	15	18	6	16		11	7	18	451	
2013	2	1	1	4	4	1	4		4		4	516	
2014	3	3	5	9	11	3	9		8	3	11	479	

PERCENTAGE ADVANCED (Level 3)

Grade	Year	White	African Amer	Hispanic	Econ Disadv	Special Educ	LEP	At Risk	Migrant	Male	Female	All	District	Number Tested (All Students)
8	2012	*	0.0	0.0	0.0	0.0	0.0	0.0		0.0	0.0	0.0	2.9	18
	2013	*	*	*	*	*	*	*		*		*	1.9	4
	2014	*	*	*	0.0	0.0	*	0.0		0.0	*	0.0	3.5	11

NUMBER TESTED IN GRADE 8													
2012	5	6	7	15	18	6	16		11	7	18	451	
2013	2	1	1	4	4	1	4		4		4	516	
2014	3	3	5	9	11	3	9		8	3	11	479	

AVERAGE PERCENTAGE OF ITEMS CORRECT BY REPORTING CATEGORY

Grade	Year	REPORTING CATEGORY			
		1. History	2. Geography and Culture	3. Government and Citizenship	4. Economics, Science, Technology, and Society
8	2012	41.7	41.7	45.0	47.2
	2013	*	*	*	*
	2014	58.5	62.7	56.4	59.1

PERCENTAGE AT OR ABOVE THE 40th PERCENTILE on the ITBS

Grade	Year	READING TOTAL (**READING PROFILE TOTAL)				
		At Risk	Not At Risk	All	District	Number Tested (All Students)
K**	2012	60.0	82.5	81.4	62.2	226
	2013	81.3	76.9	77.0	60.8	283
	2014	69.0	73.1	72.7	60.7	271
1	2012	46.7	69.3	65.2	55.4	244
	2013	37.1	64.5	60.7	55.0	252
	2014	48.0	54.2	53.6	47.2	276
2	2012	34.5	81.4	58.8	49.8	228
	2013	40.2	70.4	57.2	50.2	243
	2014	28.6	70.6	49.0	44.4	259
K-2	2012	40.0	77.3	68.3	55.8	472
	2013	46.9	72.9	68.6	56.7	778
	2014	41.7	67.2	62.1	53.1	806
# Tested (GR K-2)	2012	170	529	698	21,034	
	2013	179	888	1,061	28,878	
	2014	216	861	1,077	28,063	

Grade	Year	MATHEMATICS TOTAL (**MATHEMATICS)				
		At Risk	Not At Risk	All	District	Number Tested (All Students)
K**	2012	54.2	82.7	68.5	55.1	429
	2013	55.9	73.6	65.8	55.1	485
	2014	48.1	67.2	57.9	55.0	477
1	2012	59.2	62.1	60.5	50.7	446
	2013	60.1	59.9	60.0	52.0	470
	2014	55.9	53.7	54.7	46.0	475
2	2012	52.0	87.2	61.9	57.9	417
	2013	58.3	75.6	64.0	56.2	445
	2014	40.5	65.6	47.0	52.0	483
K-2	2012	54.9	75.8	63.6	54.5	1,292
	2013	58.2	69.3	63.3	54.4	1,400
	2014	46.9	61.4	53.2	51.0	1,435
# Tested (GR K-2)	2012	756	537	1,292	40,477	
	2013	780	625	1,400	40,966	
	2014	811	624	1,435	40,233	

PERCENTAGE AT OR ABOVE THE 40th PERCENTILE

Grade	Year	White	African Amer	Hispanic	Econ Disadv	Special Educ	LEP	At Risk	Migrant	Male	Female	All	District	Number Tested (All Students)
K**	2012	84.1	80.0	78.2	80.1	*	50.0	60.0		79.1	83.6	81.4	62.2	226
	2013	78.9	75.4	76.3	77.5	50.0	50.0	81.3		76.2	77.9	77.0	60.8	283
	2014	70.1	76.8	72.1	72.9	50.0	70.6	69.0		72.6	72.8	72.7	60.7	271
1	2012	65.4	73.4	59.6	64.6	66.7	35.3	46.7		63.3	67.2	65.2	55.4	244
	2013	58.8	66.7	58.4	59.7	11.8	50.0	37.1		57.1	64.3	60.7	55.0	252
	2014	50.5	51.5	56.4	52.7	15.4	50.0	48.0		59.4	48.3	53.6	47.2	276
2	2012	68.9	56.5	52.8	57.4	22.2	42.9	34.5		57.1	60.9	58.8	49.8	228
	2013	64.5	56.9	51.1	56.0	40.0	28.6	40.2		54.2	60.0	57.2	50.2	243
	2014	57.1	42.9	45.5	48.7	12.0	36.8	28.6		44.8	53.6	49.0	44.4	259
1-2	2012	66.9	64.7	56.4	61.3	44.4	38.7	38.1		60.4	64.1	62.1	52.7	472
	2013	68.9	66.0	62.0	64.8	28.6	42.1	43.6		63.3	67.8	65.6	55.4	778
	2014	58.8	55.7	59.1	58.0	24.1	52.3	37.4		59.0	58.2	58.6	50.6	806
# Tested (GR K-2)	2012	142	133	188	395	18	31	155		240	231	472	14,095	
	2013	270	200	292	674	35	38	163		387	391	778	21,640	
	2014	245	192	340	690	54	44	187		402	404	806	21,214	

**Kindergarten subscore is Reading Profile Total; no Reading Total subscore available.

NUMBER AT OR ABOVE THE 80th PERCENTILE

Grade	Year	White	African Amer	Hispanic	Econ Disadv	Special Educ	LEP	At Risk	Migrant	Male	Female	All	District	Number Tested (All Students)
K**	2012	55	25	28	88	*	1	2		51	62	113	2,027	226
	2013	59	36	45	121	1	1	5		73	71	144	2,108	283
	2014	34	19	43	81	2	5	10		49	52	101	1,938	271
1	2012	22	20	31	61	2	3	9		32	41	73	1,963	244
	2013	32	23	28	71	0	4	5		39	48	87	2,017	252
	2014	30	13	25	65	1	0	5		39	35	74	1,561	276
2	2012	17	7	10	30	2	0	2		21	17	38	1,017	228
	2013	13	13	12	33	0	0	2		15	24	39	1,045	243
	2014	15	4	8	23	1	1	3		13	16	29	950	259
1-2	2012	39	27	41	91	4	3	11		53	58	111	2,981	472
	2013	104	72	85	225	1	5	12		127	143	270	5,171	778
	2014	79	36	76	169	4	6	18		101	103	204	4,449	806
# Tested (GR K-2)	2012	142	133	188	395	18	31	155		240	231	472	14,095	
	2013	270	200	292	674	35	38	163		387	391	778	21,640	
	2014	245	192	340	690	54	44	187		402	404	806	21,214	

**Kindergarten subscore is Reading Profile Total; no Reading Total subscore available.

PERCENTAGE AT OR ABOVE THE 40th PERCENTILE

Grade	Year	White	African Amer	Hispanic	Econ Disadv	Special Educ	LEP	At Risk	Migrant	Male	Female	All	District	Number Tested (All Students)
K**	2012	82.0	83.6	61.4	65.9	12.5	55.0	54.2		65.2	71.7	68.5	55.1	429
	2013	75.0	69.7	61.1	66.1	35.3	55.2	55.9		62.7	68.9	65.8	55.1	485
	2014	67.5	62.5	54.5	56.6	24.0	46.8	48.1		56.0	60.1	57.9	55.0	477
1	2012	67.1	52.2	60.6	61.2	37.5	61.8	59.2		59.3	61.8	60.5	50.7	446
	2013	61.0	50.8	61.8	59.7	31.8	62.4	60.1		61.4	58.6	60.0	52.0	470
	2014	57.4	38.2	56.9	53.3	33.3	55.7	55.9		54.0	55.4	54.7	46.0	475
2	2012	79.0	63.8	56.8	60.1	37.5	52.5	52.0		60.7	63.0	61.9	57.9	417
	2013	62.7	60.6	65.2	63.5	20.0	64.4	58.3		66.7	61.8	64.0	56.2	445
	2014	46.1	44.9	46.9	46.8	10.3	45.1	40.5		48.5	45.5	47.0	52.0	483
K-2	2012	76.0	65.4	59.6	62.4	32.5	56.5	54.9		61.7	65.5	63.6	54.5	1,292
	2013	67.4	60.5	62.7	63.1	29.6	60.8	58.2		63.4	63.1	63.3	54.4	1,400
	2014	57.2	47.7	52.7	52.2	21.3	48.9	46.9		52.9	53.4	53.2	51.0	1,435
# Tested (GR K-2)	2012	233	191	852	1,165	40	625	756		637	655	1,292	40,477	
	2013	273	200	909	1,284	54	653	780		681	719	1,400	40,966	
	2014	250	193	960	1,290	75	669	811		735	700	1,435	40,233	

**Kindergarten test is Mathematics; no Mathematics Total score available.

NUMBER AT OR ABOVE THE 80th PERCENTILE

Grade	Year	White	African Amer	Hispanic	Econ Disadv	Special Educ	LEP	At Risk	Migrant	Male	Female	All	District	Number Tested (All Students)
K**	2012	39	18	64	103	0	39	39		53	71	124	2,472	429
	2013	35	18	79	119	4	48	51		73	61	134	2,594	485
	2014	25	10	61	86	2	33	37		45	54	99	2,598	477
1	2012	18	14	76	98	2	62	63		51	57	108	2,473	446
	2013	24	14	76	102	0	60	61		70	45	115	2,609	470
	2014	23	13	72	97	3	45	47		60	52	112	2,166	475
2	2012	21	17	63	88	3	44	57		62	43	105	2,843	417
	2013	15	19	60	88	0	42	51		52	42	94	2,626	445
	2014	12	11	41	62	0	31	35		37	31	68	2,408	483
K-2	2012	78	49	203	289	5	145	159		166	171	337	7,788	1,292
	2013	74	51	215	309	4	150	163		195	148	343	7,829	1,400
	2014	60	34	174	245	5	109	119		142	137	279	7,172	1,435
# Tested (GR K-2)	2012	233	191	852	1,165	40	625	756		637	655	1,292	40,477	
	2013	273	200	909	1,284	54	653	780		681	719	1,400	40,966	
	2014	250	193	960	1,290	75	669	811		735	700	1,435	40,233	

**Kindergarten test is Mathematics; no Mathematics Total score available.

PERCENTAGE AT OR ABOVE THE 40th PERCENTILE

Grade	Year	White	African Amer	Hispanic	Econ Disadv	Special Educ	LEP	At Risk	Migrant	Male	Female	All	District	Number Tested (All Students)
1	2012	63.4	60.6	72.2	69.8	50.0	73.0	69.2		66.2	71.4	68.8	62.5	443
	2013	65.9	55.7	71.6	68.5	38.1	75.1	72.4		69.5	67.9	68.7	63.6	467
	2014	55.8	50.0	71.9	64.9	47.1	71.8	71.2		63.8	67.5	65.7	58.6	472
2	2012	75.4	70.0	68.5	68.9	46.2	67.5	66.0		71.2	69.0	70.1	63.6	415
	2013	54.7	66.2	71.9	68.6	26.7	72.2	65.3		68.8	67.2	67.9	60.6	446
	2014	42.1	54.4	57.9	55.5	29.6	56.7	51.4		56.0	54.6	55.3	59.2	481
1-2	2012	68.5	65.4	70.4	69.3	48.1	70.3	67.4		68.6	70.3	69.5	63.0	858
	2013	60.5	61.4	71.7	68.6	33.3	73.7	68.4		69.2	67.6	68.3	62.1	913
	2014	49.7	52.2	64.6	60.2	36.4	63.5	59.0		59.8	61.0	60.4	58.9	953
# Tested (GR 1-2)	2012	143	136	571	773	27	411	537		424	434	858	26,880	
	2013	157	132	612	846	36	449	564		438	475	913	27,003	
	2014	171	134	625	861	44	447	575		473	480	953	26,955	

NUMBER AT OR ABOVE THE 80th PERCENTILE

Grade	Year	White	African Amer	Hispanic	Econ Disadv	Special Educ	LEP	At Risk	Migrant	Male	Female	All	District	Number Tested (All Students)
1	2012	33	26	114	156	3	84	91		82	91	173	4,060	443
	2013	28	17	113	145	2	88	92		90	70	160	4,150	467
	2014	25	22	124	158	3	85	90		84	91	175	3,708	472
2	2012	25	24	95	127	5	67	88		71	78	149	3,820	415
	2013	19	19	99	127	1	77	93		59	78	137	3,436	446
	2014	11	13	71	89	0	56	65		51	48	99	3,288	481
1-2	2012	58	50	209	283	8	151	179		153	169	322	7,880	858
	2013	47	36	212	272	3	165	185		149	148	297	7,586	913
	2014	36	35	195	247	3	141	155		135	139	274	6,996	953
# Tested (GR 1-2)	2012	143	136	571	773	27	411	537		424	434	858	26,880	
	2013	157	132	612	846	36	449	564		438	475	913	27,003	
	2014	171	134	625	861	44	447	575		473	480	953	26,955	

PERCENTAGE AT OR ABOVE THE 40th PERCENTILE

Grade	Year	White	African Amer	Hispanic	Econ Disadv	Special Educ	LEP	At Risk	Migrant	Male	Female	All	District	Number Tested (All Students)
K	2012			88.9	88.7	*	89.0	89.0		89.9	88.2	89.1	89.9	201
	2013	*		89.3	89.6	50.0	89.2	89.2		84.8	93.0	88.9	89.7	199
	2014	*		84.0	83.2	75.0	83.7	83.7		80.0	89.2	83.7	88.6	203
1	2012			91.4	91.3	*	91.3	91.4		89.0	93.5	91.4	89.2	198
	2013	*		88.1	88.0	*	88.2	88.3		86.3	90.3	88.3	87.6	205
	2014	*		91.2	91.8	50.0	91.7	91.7		83.7	99.0	91.2	84.6	194
2	2012			91.1	90.8	50.0	91.5	91.5		86.3	95.8	91.1	93.3	190
	2013			95.6	95.6	*	95.5	95.6		95.5	95.7	95.6	93.6	205
	2014	*		90.2	90.5	*	90.3	90.3		90.8	90.0	90.4	91.8	208
K-2	2012			90.4	90.2	57.1	90.6	90.6		88.4	92.4	90.5	90.8	589
	2013	*		91.0	91.1	61.1	91.0	91.0		88.6	93.1	91.0	90.3	609
	2014	*		88.4	88.4	65.0	88.5	88.5		84.5	92.7	88.4	88.2	605
# Tested (GR K-2)	2012			586	574	14	584	586		285	304	589	18,911	
	2013	3		603	597	18	601	603		289	320	609	18,629	
	2014	5		597	580	20	602	602		316	289	605	18,008	

NUMBER AT OR ABOVE THE 80th PERCENTILE

Grade	Year	White	African Amer	Hispanic	Econ Disadv	Special Educ	LEP	At Risk	Migrant	Male	Female	All	District	Number Tested (All Students)
K	2012			114	111	*	115	115		53	63	116	3,679	201
	2013	*		123	121	2	121	121		54	70	124	3,798	199
	2014	*		85	79	0	85	85		45	40	85	3,313	203
1	2012			88	85	*	87	88		37	51	88	2,437	198
	2013	*		77	75	*	78	78		32	46	78	2,394	205
	2014	*		75	73	1	76	76		30	46	76	2,123	194
2	2012			68	64	2	67	68		26	42	68	2,934	190
	2013			110	109	*	109	110		43	67	110	2,899	205
	2014	*		86	87	*	88	88		34	54	88	2,596	208
K-2	2012			270	260	4	269	271		116	156	272	9,050	589
	2013	*		310	305	2	308	309		129	183	312	9,091	609
	2014	*		246	239	2	249	249		109	140	249	8,032	605
# Tested (GR K-2)	2012			586	574	14	584	586		285	304	589	18,911	
	2013	3		603	597	18	601	603		289	320	609	18,629	
	2014	5		597	580	20	602	602		316	289	605	18,008	

PERCENTAGE DEMONSTRATING IMPROVEMENT

Grade	Level 1 in 2013		Level 2 in 2013		Level 3 in 2013		Levels 1-3 in 2013	
	Number Tested Both Years	Percentage Improved in 2014	Number Tested Both Years	Percentage Improved in 2014	Number Tested Both Years	Percentage Improved in 2014	Number Tested Both Years	Percentage Improved in 2014
5	3	*	0		0		3	*
6	7	42.9	17	70.6	0		24	62.5
7	6	16.7	15	40.0	0		21	33.3
8	7	14.3	5	*	0		12	41.7
9	5	*	8	25.0	0		13	23.1
10	7	42.9	10	50.0	0		17	47.1
11	0		4	*	0		4	*
12	0		2	*	0		2	*
ALL	35	31.4	61	54.1	0		96	45.8

PERFORMANCE IN 2014

Grade 2013-14 (N Rated)	Domain:	Listening		Speaking		Writing		Reading		Composite	
	2014 Level	N	%	N	%	N	%	N	%	N	%
KN (223)	Beginning	142	63.7	147	65.9	175	78.5	184	82.5	173	77.6
	Intermediate	61	27.4	52	23.3	35	15.7	28	12.6	39	17.5
	Advanced	14	6.3	16	7.2	8	3.6	7	3.1	6	2.7
	Advanced High	6	2.7	8	3.6	5	2.2	4	1.8	5	2.2
1 (204)	Beginning	86	42.2	114	56.2	160	78.4	147	72.1	144	70.9
	Intermediate	81	39.7	68	33.5	29	14.2	42	20.6	43	21.2
	Advanced	32	15.7	17	8.4	13	6.4	11	5.4	12	5.9
	Advanced High	5	2.5	4	2.0	2	1.0	4	2.0	4	2.0
2 (248)	Beginning	35	14.2	56	22.8	88	35.8	60	24.3	48	19.6
	Intermediate	85	34.6	77	31.3	85	34.6	99	40.1	107	43.7
	Advanced	76	30.9	74	30.1	49	19.9	67	27.1	67	27.3
	Advanced High	50	20.3	39	15.9	24	9.8	21	8.5	23	9.4
3 (235)	Beginning	14	6.0	18	7.7	49	21.0	48	20.5	29	12.5
	Intermediate	57	24.5	80	34.3	100	42.9	68	29.1	78	33.6
	Advanced	105	45.1	96	41.2	60	25.8	68	29.1	84	36.2
	Advanced High	57	24.5	39	16.7	24	10.3	50	21.4	41	17.7
4 (193)	Beginning	4	2.1	4	2.1	23	11.9	42	21.8	18	9.3
	Intermediate	37	19.2	58	30.1	66	34.2	64	33.2	68	35.2
	Advanced	59	30.6	58	30.1	65	33.7	58	30.1	67	34.7
	Advanced High	93	48.2	73	37.8	39	20.2	29	15.0	40	20.7

**PROGRESSION FROM
2013 TO 2014**

Number Rated Both Years N (%) Progressed	2014 Level	2013 Level			
		Beg	Int	Adv	Adv High
-	Beginning	-			
	Intermediate	-	-		
	Advanced	-	-	-	
	Advanced High	-	-	-	
197 53 (26.9%)	Beginning	140			
	Intermediate	39	4		
	Advanced	11	1	0	
	Advanced High	2	0	0	
238 148 (62.2%)	Beginning	46			
	Intermediate	68	35		
	Advanced	28	30	9	
	Advanced High	2	9	11	
228 84 (36.8%)	Beginning	28			
	Intermediate	15	61		
	Advanced	0	28	55	
	Advanced High	0	1	40	
185 66 (35.7%)	Beginning	17			
	Intermediate	15	50		
	Advanced	0	11	52	
	Advanced High	0	1	39	

PERFORMANCE IN 2014

Grade 2013-14 (N Rated)	Domain:	Listening		Speaking		Writing		Reading		Composite	
	2014 Level	N	%	N	%	N	%	N	%	N	%
5 (185)	Beginning	4	2.2	5	2.7	15	8.2	14	7.7	8	4.4
	Intermediate	8	4.3	9	4.9	42	22.8	48	26.4	33	18.2
	Advanced	67	36.4	72	39.1	66	35.9	65	35.7	74	40.9
	Advanced High	105	57.1	98	53.3	61	33.2	55	30.2	66	36.5
6 (155)	Beginning	2	1.3	2	1.3	6	3.9	17	11.2	3	2.0
	Intermediate	37	23.9	37	23.9	68	43.9	68	44.7	50	32.9
	Advanced	69	44.5	70	45.2	64	41.3	52	34.2	81	53.3
	Advanced High	47	30.3	46	29.7	17	11.0	15	9.9	18	11.8
7 (148)	Beginning	1	0.7	3	2.0	5	3.4	17	11.7	3	2.1
	Intermediate	9	6.1	11	7.4	39	26.4	58	40.0	36	24.8
	Advanced	76	51.4	76	51.4	46	31.1	49	33.8	64	44.1
	Advanced High	62	41.9	58	39.2	58	39.2	21	14.5	42	29.0
8 (98)	Beginning	2	2.1	2	2.1	7	7.2	8	8.5	3	3.2
	Intermediate	13	13.4	17	17.5	28	28.9	41	43.6	23	24.7
	Advanced	37	38.1	42	43.3	35	36.1	35	37.2	48	51.6
	Advanced High	45	46.4	36	37.1	27	27.8	10	10.6	19	20.4
9 (84)	Beginning	5	6.0	6	7.1	3	3.6	8	9.5	5	6.0
	Intermediate	9	10.7	15	17.9	19	22.6	21	25.0	10	11.9
	Advanced	53	63.1	38	45.2	46	54.8	41	48.8	53	63.1
	Advanced High	17	20.2	25	29.8	16	19.0	14	16.7	16	19.0

**PROGRESSION FROM
2013 TO 2014**


Number Rated Both Years N (%) Progressed	2014 Level	2013 Level			
		Beg	Int	Adv	Adv High
174 100 (57.5%)	Beginning	6			
	Intermediate	7	26		
	Advanced	3	25	42	
	Advanced High	0	4	61	
142 28 (19.7%)	Beginning	1			
	Intermediate	6	40		
	Advanced	1	3	73	
	Advanced High	0	0	18	
134 52 (38.8%)	Beginning	1			
	Intermediate	2	32		
	Advanced	0	9	49	
	Advanced High	0	0	41	
85 22 (25.9%)	Beginning	3			
	Intermediate	2	20		
	Advanced	0	3	40	
	Advanced High	0	0	17	
65 25 (38.5%)	Beginning	0			
	Intermediate	2	5		
	Advanced	0	11	35	
	Advanced High	0	1	11	

PERFORMANCE IN 2014

Grade 2013-14 (N Rated)	Domain:	Listening		Speaking		Writing		Reading		Composite	
	2014 Level	N	%	N	%	N	%	N	%	N	%
10 (70)	Beginning	2	2.9	2	2.9	1	1.4	8	11.6	2	2.9
	Intermediate	10	14.3	12	17.1	17	24.3	24	34.8	16	23.2
	Advanced	42	60.0	52	74.3	40	57.1	29	42.0	42	60.9
	Advanced High	16	22.9	4	5.7	12	17.1	8	11.6	9	13.0
11 (55)	Beginning	0	0.0	0	0.0	1	1.8	4	7.3	1	1.8
	Intermediate	7	12.7	7	12.7	6	10.9	13	23.6	6	10.9
	Advanced	20	36.4	19	34.5	25	45.5	24	43.6	23	41.8
	Advanced High	28	50.9	29	52.7	23	41.8	14	25.5	25	45.5
12 (38)	Beginning	0	0.0	0	0.0	0	0.0	0	0.0	0	0.0
	Intermediate	0	0.0	0	0.0	2	5.3	7	18.9	0	0.0
	Advanced	6	15.8	7	18.4	10	26.3	16	43.2	12	32.4
	Advanced High	32	84.2	31	81.6	26	68.4	14	37.8	25	67.6
ALL (1,936)	Beginning	297	15.4	359	18.6	533	27.6	557	29.0	437	22.9
	Intermediate	414	21.5	443	23.0	536	27.8	581	30.3	509	26.6
	Advanced	656	34.0	637	33.0	527	27.3	522	27.2	633	33.1
	Advanced High	563	29.2	490	25.4	334	17.3	259	13.5	333	17.4

**PROGRESSION FROM
2013 TO 2014**

Number Rated Both Years N (%) Progressed	2014 Level	2013 Level			
		Beg	Int	Adv	Adv High
57 16 (28.1%)	Beginning	0			
	Intermediate	7	8		
	Advanced	1	2	33	
	Advanced High	0	0	6	
44 27 (61.4%)	Beginning	0			
	Intermediate	1	5		
	Advanced	0	5	12	
	Advanced High	0	1	20	
25 18 (72.0%)	Beginning	0			
	Intermediate	0	0		
	Advanced	0	1	7	
	Advanced High	0	1	16	
1,576 640 (40.6%)	Beginning	243			
	Intermediate	164	286		
	Advanced	45	129	407	
	Advanced High	4	18	280	

 Indicates students who progressed at least one level from 2013 to 2014.