

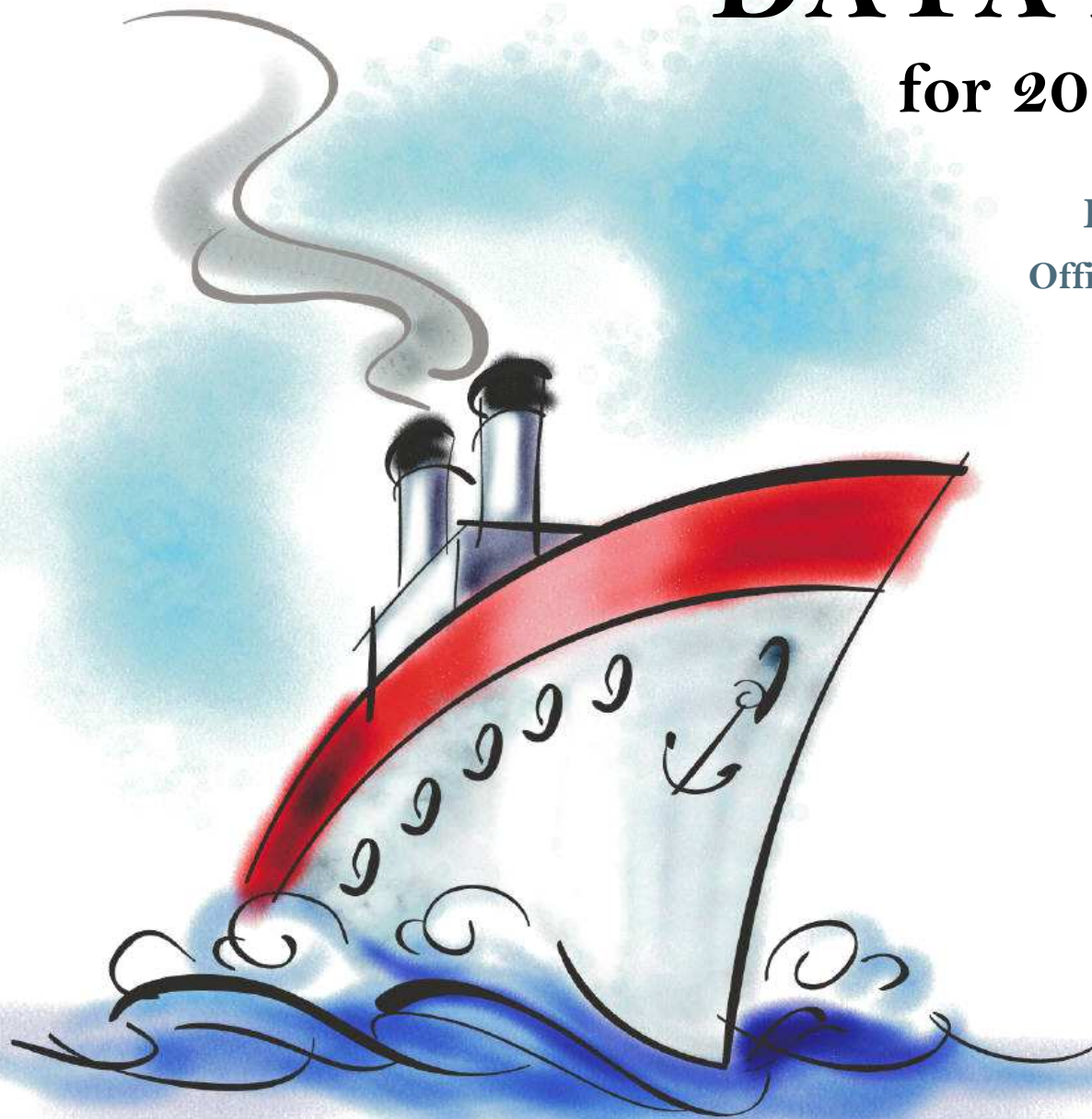
DATA PACKET

for 2014-15 planning

Evaluation & Assessment
Office of Institutional Research
<http://mydata.dallasisd.org>
OIR@dallasisd.org

September 8, 2014

**FRANKLIN D.
ROOSEVELT
FEEDER GROUP**



Dallas Independent School District

2. Contents Table of Contents

STUDENTS AND STAFF

- 5. Summary Summary of Student and Teacher Statistics
- 9. Enroll (2) Enrollment Statistics by Select Student Group
- 15. Teachers Teacher Statistics

STAAR (English)

- 16. Reading (3-8) STAAR 3-8 Reading in English
- 28. Writing (3-8) STAAR 3-8 Writing in English
- 43. Math (EOC) STAAR EOC Mathematics
- 54. Science (EOC) ... STAAR EOC Science
- 62. SS (EOC) STAAR EOC Social Studies

STAAR (Spanish)

- 66. Reading (3-8) STAAR 3-8 Reading in Spanish
- 74. Math (3-8) STAAR 3-8 Mathematics in Spanish

STAAR M

- 82. Reading (3-8) STAAR M 3-8 Reading
- 94. Writing (3-8) STAAR M 3-8 Writing
- 109. Math (EOC) STAAR M EOC Mathematics
- 120. Science (EOC) ... STAAR M EOC Science
- 128. SS (EOC) STAAR M EOC Social Studies

ITBS/LOGRAMOS

- 132. Compliance SCE Compliance for At-Risk Students
- 135. Math ITBS Mathematics Subtests

ENGLISH PROFICIENCY

- 141. WMLS Woodcock-Muñoz Language Survey

3. Notes Notes and Data Descriptions

- 6. Enroll (1) Enrollment Statistics by Ethnicity
- 12. Attendance Student Attendance Statistics

- 24. Reading (EOC) .. STAAR EOC Reading
- 35. Math (3-8) STAAR 3-8 Mathematics in English
- 47. Science (3-8) STAAR 3-8 Science in English
- 58. SS (3-8) STAAR 3-8 Social Studies in English

- 70. Writing (3-8) STAAR 3-8 Writing in Spanish
- 78. Science (3-8) STAAR 3-8 Science in Spanish

- 90. Reading (EOC) .. STAAR M EOC Reading
- 101. Math (3-8) STAAR M 3-8 Mathematics
- 113. Science (3-8) STAAR M 3-8 Science
- 124. SS (3-8) STAAR M 3-8 Social Studies

- 133. Reading ITBS Reading Subtests
- 139. Reading Logramos Reading Subtests

- 142. TELPAS Texas English Language Proficiency Assessment System

2013-14 SCHOOL SUMMARY

- Student percentages are computed as the percentage of total student enrollment.
- Additional statistics are available in ENROLLMENT and TEACHER reports.
- Race/ethnic categories are based on the newest federal standards for ethnicity and race reporting, though some categories have been combined because of small group sizes. Students reporting their ethnicity as “Hispanic” are not counted in any race category.
- “Economically disadvantaged” students are those who qualify for free or reduced-price lunch through the federal government's program.
- Teacher demographics and assignments are from the district's Public Education Information Management System (PEIMS) submission to the TEA.

ENROLLMENT

- Statistics are based on the school's enrollment at the end of the fifth six-weeks grading period.
- “Economically disadvantaged” students are those receiving free or reduced-price lunches.
- “New” students were new to the district in 2013-14. They are counted as new if not enrolled in a district campus before the last day of the 2012-13 school year.
- The “retention rate” is the percentage of students in the same grade at the end of the fifth six-weeks grading period for both 2012-13 and 2013-14.

ATTENDANCE

- Statistics are based on student attendance through the end of the sixth six-weeks grading period (the end of the school year).
- “Average daily membership” is the total number of school days students were ENROLLED divided by the number of school days in the year.
- The “average daily attendance” number (N) is the total number of school days students were IN ATTENDANCE divided by the number of school days in the year. The “average daily attendance” percentage (%) is the average attendance rate. For each student, the number of days attended is divided by the number of days enrolled. This rate is then averaged across students.
- The number (N) of “yearly transactions” is the total number of transfer and withdrawal transactions in the school year. The percentage (%) is the number of transactions divided by “average daily membership,” which gives (on average) the percentage of the membership associated with a transaction.
- “Continuously enrolled” students are enrolled and in attendance for a minimum number of instructional days in at least one course at the school between the beginning of the school year and the first day of the main STAAR testing period. The minimum number varies depending on the school year's calendar, but is typically around 130 days.
- The “stability rate” is the number of continuously enrolled students divided by “average daily membership.”

TEACHERS

- Teacher demographics and assignments are from the district's Public Education Information Management System (PEIMS) submission to the TEA.
- Teacher absences counted towards the average DO NOT include vacation days (coded as VAC in personnel database).
- Retention rate for a school year is computed with numerator “# of teachers assigned to the school both that year and the year prior” and denominator “# of teachers assigned to the school for the prior year.” That is, the retention rate is the percentage of the prior year's teachers who continued at the school.

STAAR, STAAR L, and STAAR M

- Cells marked with an asterisk (*) indicate five or fewer students were tested. Blank cells indicate no students were tested.
- Student group assignments are from the district's Public Education Information Management System (PEIMS) submission to the TEA.
- STAAR statistics are based on results from standard STAAR only. STAAR L and STAAR M statistics are computed separately, following TEA reporting practice.
- “Percentage Satisfactory” is the percentage of students achieving Level 2 (Satisfactory) or Level 3 (Advanced).
- Statistics by reporting category are averages for all students (across student groups and genders).
- An “average percentage correct” is computed as follows: for each student, divide the number of items correctly answered by the total number of items in the test section, then average the resulting percentages across all students. For short answers on EOC English tests, an “average rating” is presented; STAAR EOC short answers are rated on a scale of 0 to 3. For written compositions on writing tests, “average score points” is presented. Additional details provided in report footnotes.
- Reading and mathematics statistics for SSI grades 5 and 8 are based on scores cumulative through the second administration. EOC statistics are based on first administration scores from the fall and spring administrations.
- Beginning in 2014, EOC Reading and EOC Writing tests were replaced with EOC English tests.

SCE COMPLIANCE and ITBS / ITED / LOGRAMOS

- Cells marked with an asterisk (*) indicate five or fewer students were tested. Blank cells indicate no students were tested.
- Student group assignments are based on demographic data in the Dallas ISD student database.
- Kindergarten ITBS reading statistics are based on the Reading Profile Total summary score. All other grades' ITBS reading statistics, and Logramos reading statistics for all grades, are based on the Reading Total summary score. (Reading Total values not available with use of the ITBS form administered in kindergarten.) “Number tested” statistics include kindergarten.
- Kindergarten ITBS mathematics statistics are based on the Mathematics subtest score. All other grades' statistics are based on the Mathematics Total summary score. (Mathematics Total values not available with use of the ITBS form administered in kindergarten.) “Number tested” statistics include kindergarten.
- Mathematics Total summary scores are combinations of the Mathematics Concepts, Problems, and Computation subtest results. For schools that did not administer Mathematics Concepts or Mathematics Problems subtests, Mathematics Computation statistics are provided separately.

TELPAS

- Students are counted as having tested if any one of the four domains is rated. Because a TELPAS composite rating is not assigned to a student unless all four domains are rated, the number of TELPAS composite ratings may be smaller than the number tested.
- If a student's composite rating did not increase at least one level from 2013 to 2014, the TEA did not report the 2013 composite rating.
- If a student is rated as advanced high in 2014, the TEA does not differentiate between the advanced and advanced high levels from 2013.

STUDENT ENROLLMENT

Grade	Enrollment
PK	294
KN	382
1	441
2	410
3	401
4	426
5	378
6	275
7	255
8	257
9	173
10	155
11	110
12	140
ALL	4,097

STUDENT AND TEACHER RACE/ETHNICITY

Ethnicity/Race	Students		Teachers	
	Number	Percent	Number	Percent
Black/African American	2,203	53.8	173	62.5
American Indian/Alaska Native	6	0.1	*	*
Asian/Hawaiian/Pacific Islander	0	0.0	*	*
Hispanic	1,845	45.0	44	15.9
White	32	0.8	45	16.2
Multiple	11	0.3	7	2.5
Other* (teachers only)	—	—	8	2.9
Not reported (students only)	0	0.0	—	—

*For teachers, "Other" category includes American Indian/Alaska Native and Asian/Hawaiian/Pacific Islander.

SELECT STUDENT GROUP ENROLLMENT

Group	Number	Percent
At-Risk	2,812	68.6
Economically disadvantaged	3,865	94.3
Limited English proficient (LEP)	1,283	31.3
Special education	361	8.8
Talented and Gifted (TAG)	350	8.5

Grade	Year	Enrollment	African American		American Indian		Asian		Hispanic		White		Multiple category	
			N	%	N	%	N	%	N	%	N	%	N	%
PK	2012	276	126	45.7	2	0.7	0	0.0	144	52.2	4	1.4	0	0.0
	2013	267	138	51.7	1	0.4	1	0.4	123	46.1	4	1.5	0	0.0
	2014	294	137	46.6	0	0.0	0	0.0	149	50.7	5	1.7	3	1.0
KN	2012	416	236	56.7	2	0.5	1	0.2	174	41.8	3	0.7	0	0.0
	2013	395	205	51.9	3	0.8	0	0.0	178	45.1	9	2.3	0	0.0
	2014	382	203	53.1	0	0.0	0	0.0	173	45.3	5	1.3	1	0.3
1	2012	447	231	51.7	0	0.0	0	0.0	210	47.0	5	1.1	1	0.2
	2013	429	244	56.9	1	0.2	1	0.2	179	41.7	3	0.7	1	0.2
	2014	441	232	52.6	2	0.5	0	0.0	201	45.6	5	1.1	1	0.2
2	2012	463	239	51.6	2	0.4	0	0.0	219	47.3	3	0.6	0	0.0
	2013	422	222	52.6	0	0.0	0	0.0	194	46.0	6	1.4	0	0.0
	2014	410	224	54.6	1	0.2	0	0.0	183	44.6	1	0.2	1	0.2
3	2012	423	216	51.1	2	0.5	0	0.0	203	48.0	2	0.5	0	0.0
	2013	439	230	52.4	3	0.7	0	0.0	203	46.2	3	0.7	0	0.0
	2014	401	210	52.4	0	0.0	0	0.0	187	46.6	4	1.0	0	0.0
4	2012	400	224	56.0	1	0.3	0	0.0	174	43.5	0	0.0	1	0.3
	2013	420	215	51.2	1	0.2	0	0.0	203	48.3	1	0.2	0	0.0
	2014	426	209	49.1	0	0.0	0	0.0	215	50.5	2	0.5	0	0.0
5	2012	421	242	57.5	1	0.2	0	0.0	177	42.0	0	0.0	1	0.2
	2013	384	206	53.6	0	0.0	0	0.0	174	45.3	2	0.5	2	0.5
	2014	378	192	50.8	1	0.3	0	0.0	183	48.4	1	0.3	1	0.3
PK-5	2012	2,846	1,514	53.2	10	0.4	1	0.0	1,301	45.7	17	0.6	3	0.1
	2013	2,756	1,460	53.0	9	0.3	2	0.1	1,254	45.5	28	1.0	3	0.1
	2014	2,732	1,407	51.5	4	0.1	0	0.0	1,291	47.3	23	0.8	7	0.3

Grade	Year	Enrollment	African American		American Indian		Asian		Hispanic		White		Multiple category	
			N	%	N	%	N	%	N	%	N	%	N	%
6	2012	292	176	60.3	0	0.0	1	0.3	113	38.7	1	0.3	1	0.3
	2013	279	184	65.9	0	0.0	0	0.0	93	33.3	1	0.4	1	0.4
	2014	275	169	61.5	0	0.0	0	0.0	102	37.1	1	0.4	3	1.1
7	2012	332	216	65.1	1	0.3	0	0.0	111	33.4	1	0.3	3	0.9
	2013	293	181	61.8	0	0.0	0	0.0	110	37.5	2	0.7	0	0.0
	2014	255	161	63.1	0	0.0	0	0.0	92	36.1	1	0.4	1	0.4
8	2012	310	207	66.8	1	0.3	0	0.0	98	31.6	1	0.3	3	1.0
	2013	286	189	66.1	1	0.3	0	0.0	93	32.5	1	0.3	2	0.7
	2014	257	151	58.8	0	0.0	0	0.0	103	40.1	3	1.2	0	0.0
6-8	2012	934	599	64.1	2	0.2	1	0.1	322	34.5	3	0.3	7	0.7
	2013	858	554	64.6	1	0.1	0	0.0	296	34.5	4	0.5	3	0.3
	2014	787	481	61.1	0	0.0	0	0.0	297	37.7	5	0.6	4	0.5

Grade	Year	Enrollment	African American		American Indian		Asian		Hispanic		White		Multiple category	
			N	%	N	%	N	%	N	%	N	%	N	%
9	2012	146	94	64.4	0	0.0	0	0.0	51	34.9	0	0.0	1	0.7
	2013	173	102	59.0	0	0.0	0	0.0	69	39.9	2	1.2	0	0.0
	2014	173	88	50.9	2	1.2	0	0.0	82	47.4	1	0.6	0	0.0
10	2012	169	120	71.0	0	0.0	0	0.0	49	29.0	0	0.0	0	0.0
	2013	125	72	57.6	1	0.8	0	0.0	52	41.6	0	0.0	0	0.0
	2014	155	74	47.7	0	0.0	0	0.0	78	50.3	3	1.9	0	0.0
11	2012	132	92	69.7	1	0.8	0	0.0	39	29.5	0	0.0	0	0.0
	2013	145	95	65.5	1	0.7	0	0.0	49	33.8	0	0.0	0	0.0
	2014	110	63	57.3	0	0.0	0	0.0	47	42.7	0	0.0	0	0.0
12	2012	123	94	76.4	0	0.0	0	0.0	29	23.6	0	0.0	0	0.0
	2013	133	90	67.7	1	0.8	0	0.0	41	30.8	0	0.0	1	0.8
	2014	140	90	64.3	0	0.0	0	0.0	50	35.7	0	0.0	0	0.0
9-12	2012	570	400	70.2	1	0.2	0	0.0	168	29.5	0	0.0	1	0.2
	2013	576	359	62.3	3	0.5	0	0.0	211	36.6	2	0.3	1	0.2
	2014	578	315	54.5	2	0.3	0	0.0	257	44.5	4	0.7	0	0.0
ALL	2012	4,350	2,513	57.8	13	0.3	2	0.0	1,791	41.2	20	0.5	11	0.3
	2013	4,190	2,373	56.6	13	0.3	2	0.0	1,761	42.0	34	0.8	7	0.2
	2014	4,097	2,203	53.8	6	0.1	0	0.0	1,845	45.0	32	0.8	11	0.3

Grade	Year	Enrollment	Economically Disadvantaged		LEP		Special Education		At Risk		TAG		New (to District)		Gender		Retention Rate (%)
			N	%	N	%	N	%	N	%	N	%	N	%	% Male	% Female	
PK	2012	276	275	99.6	113	40.9	3	1.1	109	39.5	0	0.0	274	99.3	50.4	49.6	0.4
	2013	267	261	97.8	103	38.6	4	1.5	104	39.0	0	0.0	265	99.3	44.9	55.1	0.0
	2014	294	279	94.9	112	38.1	11	3.7	115	39.1	0	0.0	289	98.3	42.9	57.1	0.3
KN	2012	416	407	97.8	133	32.0	13	3.1	139	33.4	2	0.5	193	46.4	53.4	46.6	1.2
	2013	395	389	98.5	132	33.4	7	1.8	134	33.9	6	1.5	146	37.0	51.6	48.4	0.8
	2014	382	365	95.5	122	31.9	14	3.7	133	34.8	16	4.2	132	34.6	50.3	49.7	1.0
1	2012	447	439	98.2	158	35.3	22	4.9	190	42.5	7	1.6	51	11.4	55.0	45.0	5.8
	2013	429	418	97.4	131	30.5	26	6.1	152	35.4	30	7.0	41	9.6	53.6	46.4	4.0
	2014	441	425	96.4	144	32.7	19	4.3	162	36.7	24	5.4	53	12.0	52.4	47.6	3.4
2	2012	463	456	98.5	177	38.2	23	5.0	352	76.0	31	6.7	48	10.4	51.8	48.2	7.3
	2013	422	411	97.4	148	35.1	19	4.5	292	69.2	26	6.2	42	10.0	55.9	44.1	3.3
	2014	410	391	95.4	138	33.7	29	7.1	269	65.6	39	9.5	36	8.8	53.7	46.3	5.4
3	2012	423	412	97.4	164	38.8	26	6.1	335	79.2	52	12.3	47	11.1	47.0	53.0	2.6
	2013	439	431	98.2	161	36.7	27	6.2	345	78.6	51	11.6	31	7.1	50.8	49.2	2.3
	2014	401	376	93.8	142	35.4	22	5.5	296	73.8	36	9.0	38	9.5	53.1	46.9	4.2
4	2012	400	378	94.5	128	32.0	39	9.8	310	77.5	53	13.3	33	8.3	53.5	46.5	2.3
	2013	420	404	96.2	159	37.9	35	8.3	317	75.5	79	18.8	25	6.0	46.9	53.1	0.0
	2014	426	408	95.8	174	40.8	31	7.3	361	84.7	68	16.0	31	7.3	47.4	52.6	1.6
5	2012	421	403	95.7	134	31.8	44	10.5	289	68.6	72	17.1	33	7.8	50.1	49.9	2.4
	2013	384	369	96.1	123	32.0	44	11.5	277	72.1	69	18.0	32	8.3	55.2	44.8	0.5
	2014	378	352	93.1	144	38.1	33	8.7	310	82.0	78	20.6	32	8.5	48.4	51.6	0.8
PK-5	2012	2,846	2,770	97.3	1,007	35.4	170	6.0	1,724	60.6	217	7.6	679	23.9	51.7	48.3	3.4
	2013	2,756	2,683	97.4	957	34.7	162	5.9	1,621	58.8	261	9.5	582	21.1	51.6	48.4	1.7
	2014	2,732	2,596	95.0	976	35.7	159	5.8	1,646	60.2	261	9.6	611	22.4	50.0	50.0	2.5

Grade	Year	Enrollment	Economically Disadvantaged		LEP		Special Education		At Risk		TAG		New (to District)		Gender		Retention Rate (%)
			N	%	N	%	N	%	N	%	N	%	N	%	% Male	% Female	
6	2012	292	279	95.5	82	28.1	36	12.3	195	66.8	32	11.0	35	12.0	52.4	47.6	2.1
	2013	279	266	95.3	58	20.8	41	14.7	204	73.1	38	13.6	24	8.6	56.3	43.7	1.4
	2014	275	264	96.0	74	26.9	48	17.5	240	87.3	17	6.2	16	5.8	54.5	45.5	7.6
7	2012	332	307	92.5	47	14.2	53	16.0	224	67.5	35	10.5	35	10.5	50.3	49.7	1.8
	2013	293	280	95.6	82	28.0	34	11.6	214	73.0	20	6.8	22	7.5	56.3	43.7	3.1
	2014	255	235	92.2	60	23.5	36	14.1	228	89.4	22	8.6	20	7.8	51.8	48.2	8.2
8	2012	310	285	91.9	42	13.5	38	12.3	209	67.4	25	8.1	39	12.6	52.9	47.1	5.5
	2013	286	271	94.8	35	12.2	43	15.0	188	65.7	33	11.5	19	6.6	50.7	49.3	1.7
	2014	257	240	93.4	69	26.8	29	11.3	215	83.7	15	5.8	22	8.6	49.4	50.6	2.3
6-8	2012	934	871	93.3	171	18.3	127	13.6	628	67.2	92	9.9	109	11.7	51.8	48.2	3.1
	2013	858	817	95.2	175	20.4	118	13.8	606	70.6	91	10.6	65	7.6	54.4	45.6	2.1
	2014	787	739	93.9	203	25.8	113	14.4	683	86.8	54	6.9	58	7.4	52.0	48.0	6.1

Grade	Year	Enrollment	Economically Disadvantaged		LEP		Special Education		At Risk		TAG		New (to District)		Gender		Retention Rate (%)
			N	%	N	%	N	%	N	%	N	%	N	%	% Male	% Female	
9	2012	146	125	85.6	24	16.4	21	14.4	118	80.8	9	6.2	23	15.8	46.6	53.4	5.5
	2013	173	157	90.8	30	17.3	31	17.9	133	76.9	10	5.8	17	9.8	54.3	45.7	4.0
	2014	173	159	91.9	41	23.7	27	15.6	139	80.3	6	3.5	28	16.2	52.6	47.4	3.5
10	2012	169	158	93.5	15	8.9	30	17.8	127	75.1	18	10.7	18	10.7	51.5	48.5	0.6
	2013	125	118	94.4	24	19.2	16	12.8	103	82.4	9	7.2	7	5.6	44.8	55.2	1.6
	2014	155	140	90.3	34	21.9	24	15.5	138	89.0	8	5.2	9	5.8	52.3	47.7	5.2
11	2012	132	109	82.6	21	15.9	20	15.2	106	80.3	16	12.1	10	7.6	50.8	49.2	0.0
	2013	145	129	89.0	9	6.2	22	15.2	108	74.5	17	11.7	14	9.7	49.7	50.3	0.0
	2014	110	100	90.9	21	19.1	17	15.5	99	90.0	9	8.2	7	6.4	44.5	55.5	0.0
12	2012	123	95	77.2	14	11.4	19	15.4	103	83.7	10	8.1	3	2.4	48.8	51.2	2.4
	2013	133	104	78.2	17	12.8	21	15.8	108	81.2	15	11.3	7	5.3	53.4	46.6	2.3
	2014	140	131	93.6	8	5.7	21	15.0	107	76.4	12	8.6	1	0.7	48.6	51.4	2.9
9-12	2012	570	487	85.4	74	13.0	90	15.8	454	79.6	53	9.3	54	9.5	49.5	50.5	2.1
	2013	576	508	88.2	80	13.9	90	15.6	452	78.5	51	8.9	45	7.8	50.9	49.1	2.1
	2014	578	530	91.7	104	18.0	89	15.4	483	83.6	35	6.1	45	7.8	50.0	50.0	3.1
ALL	2012	4,350	4,128	94.9	1,252	28.8	387	8.9	2,806	64.5	362	8.3	842	19.4	51.4	48.6	3.1
	2013	4,190	4,008	95.7	1,212	28.9	370	8.8	2,679	63.9	403	9.6	692	16.5	52.1	47.9	1.8
	2014	4,097	3,865	94.3	1,283	31.3	361	8.8	2,812	68.6	350	8.5	714	17.4	50.4	49.6	3.3

Grade	Year	Average Daily Membership		Average Daily Attendance				Yearly Transactions			Continuously Enrolled		Stability Rate	
		N	District	N	%	District N	District %	N	%	District %	N	District	%	District
KN	2012	416	13,633	396	95.0	13,086	96.0	131	31.5	19.9	330	11,731	79.3	86.0
	2013	401	14,067	381	95.1	13,411	95.3	119	29.7	20.0	331	12,178	82.5	86.6
	2014	387	13,618	368	94.9	13,058	95.9	98	25.3	19.8	295	11,271	76.2	82.8
1	2012	450	14,026	432	96.1	13,533	96.5	99	22.0	18.3	380	12,292	84.5	87.6
	2013	426	14,140	406	95.3	13,578	96.0	116	27.2	18.7	362	12,528	84.9	88.6
	2014	434	14,262	414	95.5	13,732	96.3	117	27.0	19.2	340	12,149	78.4	85.2
2	2012	460	13,338	444	96.7	12,932	97.0	110	23.9	16.8	390	11,883	84.8	89.1
	2013	428	13,555	410	95.9	13,077	96.5	85	19.9	17.1	385	12,206	90.0	90.0
	2014	420	13,652	403	95.8	13,209	96.8	98	23.3	17.0	340	11,868	80.9	86.9
3	2012	419	12,874	405	96.6	12,508	97.2	74	17.7	15.5	368	11,592	87.8	90.0
	2013	439	12,879	426	97.1	12,466	96.8	75	17.1	15.9	407	11,710	92.7	90.9
	2014	407	13,159	392	96.3	12,763	97.0	86	21.1	17.3	334	11,491	82.0	87.3
4	2012	401	12,493	389	97.0	12,139	97.2	76	18.9	16.6	347	11,218	86.5	89.8
	2013	426	12,406	411	96.6	12,029	97.0	68	16.0	16.5	384	11,339	90.2	91.4
	2014	433	12,543	420	96.9	12,180	97.1	76	17.6	16.3	376	11,075	86.8	88.3
5	2012	423	12,562	411	97.2	12,220	97.3	36	8.5	5.3	375	11,364	88.7	90.5
	2013	383	12,053	371	96.8	11,696	97.0	35	9.1	6.2	347	11,075	90.5	91.9
	2014	381	12,130	368	96.6	11,795	97.2	24	6.3	5.4	323	10,790	84.7	89.0
KN-5	2012	2,569	78,926	2,477	96.4	76,419	96.8	526	20.5	15.5	2,190	70,080	85.2	88.8
	2013	2,503	79,100	2,407	96.1	76,255	96.4	498	19.9	16.0	2,216	71,036	88.5	89.8
	2014	2,463	79,365	2,365	96.0	76,736	96.7	499	20.3	16.0	2,008	68,644	81.5	86.5

Grade	Year	Average Daily Membership		Average Daily Attendance				Yearly Transactions			Continuously Enrolled		Stability Rate	
		N	District	N	%	District N	District %	N	%	District %	N	District	%	District
6	2012	291	10,683	276	95.0	10,315	96.6	88	30.2	17.6	237	9,420	81.4	88.2
	2013	280	11,463	267	95.4	11,062	96.5	92	32.9	21.1	227	10,320	81.1	90.0
	2014	275	10,808	258	94.0	10,413	96.3	72	26.2	20.0	227	9,554	82.6	88.4
7	2012	327	10,204	308	94.1	9,727	95.3	100	30.6	23.8	252	8,576	77.0	84.0
	2013	302	10,542	285	94.3	10,116	96.0	74	24.5	24.5	248	9,357	82.2	88.8
	2014	264	11,195	249	94.3	10,729	95.8	79	29.9	22.1	218	9,852	82.6	88.0
8	2012	306	10,369	289	94.3	9,838	94.9	47	15.3	15.5	244	8,711	79.7	84.0
	2013	295	9,955	276	93.6	9,486	95.3	52	17.6	17.6	243	8,664	82.4	87.0
	2014	255	10,449	242	94.9	9,970	95.4	45	17.6	13.1	217	9,097	85.0	87.1
6-8	2012	924	31,256	873	94.4	29,880	95.6	235	25.4	18.9	733	26,707	79.3	85.4
	2013	876	31,960	827	94.4	30,665	96.0	218	24.9	21.1	718	28,341	81.9	88.7
	2014	794	32,451	749	94.4	31,112	95.9	196	24.7	18.5	662	28,503	83.4	87.8

Grade	Year	Average Daily Membership		Average Daily Attendance				Yearly Transactions			Continuously Enrolled		Stability Rate	
		N	District	N	%	District N	District %	N	%	District %	N	District	%	District
9	2012	153	10,922	141	92.2	10,196	93.3	63	41.2	27.8	106	8,726	69.3	79.9
	2013	186	11,153	170	91.3	10,499	94.1	61	32.9	28.3	139	9,388	74.9	84.2
	2014	175	10,850	162	92.8	10,242	94.4	83	47.5	28.4	129	9,091	73.8	83.8
10	2012	173	9,007	160	92.6	8,431	93.6	50	28.9	20.6	124	7,332	71.6	81.4
	2013	135	9,331	125	92.2	8,812	94.4	44	32.6	20.5	100	8,042	74.0	86.2
	2014	171	9,898	157	91.9	9,367	94.6	50	29.2	20.3	131	8,628	76.6	87.2
11	2012	136	8,913	124	91.4	8,306	93.2	27	19.9	15.9	97	7,319	71.4	82.1
	2013	159	8,457	147	92.8	7,949	94.0	28	17.6	18.9	126	7,295	79.4	86.3
	2014	118	8,467	108	91.9	8,005	94.5	30	25.5	18.1	93	7,476	79.0	88.3
12	2012	135	8,178	120	89.1	7,571	92.6	19	14.1	12.6	92	6,742	68.1	82.4
	2013	140	8,199	125	89.5	7,661	93.4	27	19.3	14.9	98	7,269	70.2	88.7
	2014	146	7,886	133	91.0	7,407	93.9	18	12.4	15.2	117	7,027	80.3	89.1
9-12	2012	597	37,021	546	91.4	34,504	93.2	159	26.6	19.8	419	30,119	70.2	81.4
	2013	619	37,140	566	91.5	34,922	94.0	160	25.8	21.2	463	31,994	74.8	86.1
	2014	609	37,101	560	91.9	35,021	94.4	181	29.7	21.1	470	32,222	77.2	86.8

Teachers: 277

DISTRIBUTIONS

Ethnicity/Race	Number	Percentage
African American	173	62.5
Hispanic	44	15.9
White	45	16.2
Multiple	7	2.5
Other	8	2.9

Gender	Number	Percentage
Female	194	70.0
Male	83	30.0

ATTENDANCE / RETENTION

	Average Absences	Retention Rate
2011-12	6.7	—
2012-13	7.7	73.6
2013-14	7.2	66.6

YEARS EXPERIENCE

Years	Number	Percentage
Beginning (0)	42	15.2
1	12	4.3
2	6	2.2
3	10	3.6
4	12	4.3
5	15	5.4
1-3	28	10.1
More than 3	207	74.7
1 - 5	55	19.9
6 - 10	64	23.1
11 - 20	64	23.1
More than 20	52	18.8

PERCENTAGE SATISFACTORY (Levels 2 or 3)

Grade	Year	White	African Amer	Hispanic	Econ Disadv	Special Educ	LEP	At Risk	Migrant	Male	Female	All	District	Number Tested (All Students)
3	2012	*	61.8	63.3	61.2	28.6	50.0	49.4		54.8	67.8	61.9	63.6	270
	2013	*	59.7	56.1	58.1	33.3	52.6	39.0		52.7	65.4	58.6	67.8	278
	2014	*	44.1	57.1	46.4	*	54.5	29.1		45.0	48.4	46.7	61.7	255
4	2012		52.2	64.6	53.6	12.5	67.6	37.6		54.9	56.4	55.6	64.3	286
	2013	*	52.3	66.7	55.2	28.6	60.0	45.2		53.7	59.1	56.5	62.3	285
	2014	*	46.7	56.4	48.4	0.0	57.1	36.8		45.6	53.2	49.5	59.4	277
5	2012		62.6	75.0	64.6	27.3	71.9	45.4		65.7	65.6	65.6	68.0	294
	2013	*	74.3	81.8	77.0	53.8	90.4	64.3		76.0	78.8	77.3	81.5	286
	2014	*	70.8	82.2	74.4	75.0	81.1	63.3		75.9	73.7	74.8	78.5	270
3-5	2012	*	59.0	67.8	59.9	23.1	64.5	44.5		58.6	63.5	61.1	65.5	850
	2013	83.3	61.7	70.4	63.4	39.4	73.0	49.0		61.2	67.4	64.2	71.1	849
	2014	50.0	53.2	67.3	56.3	43.5	68.9	44.1		55.5	58.7	57.1	66.7	802

NUMBER TESTED IN GRADES 3-5													
2012	2	634	211	802	26	93	389		420	430	850	22,173	
2013	6	598	240	809	33	111	363		438	411	849	21,619	
2014	6	577	217	733	23	106	503		400	402	802	21,304	

PERCENTAGE SATISFACTORY (Levels 2 or 3)

Grade	Year	White	African Amer	Hispanic	Econ Disadv	Special Educ	LEP	At Risk	Migrant	Male	Female	All	District	Number Tested (All Students)
6	2012		52.5	56.9	54.8	25.0	55.4	41.4		45.5	62.6	54.0	63.5	265
	2013		50.6	58.8	52.7	42.9	47.3	44.5		56.8	49.6	53.4	57.7	249
	2014		41.3	42.6	41.4	18.2	39.7	32.8		33.1	51.8	41.9	63.1	234
7	2012	*	54.5	59.2	56.1	18.2	34.2	41.0		41.1	70.0	56.0	67.5	291
	2013		53.7	52.8	52.9	11.1	48.1	43.6		45.6	62.9	53.5	67.3	271
	2014		41.4	50.0	43.3	*	37.5	37.0		45.5	43.4	44.4	60.5	223
8	2012		70.7	57.6	65.9	57.1	41.0	55.0		62.2	70.6	66.3	71.3	279
	2013	*	77.3	72.9	76.8	*	48.3	63.9		76.0	75.8	75.9	82.7	253
	2014	*	69.3	82.8	75.4	28.6	81.3	69.1		72.1	77.4	74.9	81.5	235
6-8	2012	*	59.5	57.9	58.9	30.8	46.4	46.0		49.8	67.9	58.8	67.4	835
	2013	*	60.5	60.9	60.6	19.0	47.8	50.2		58.5	63.3	60.8	68.6	773
	2014	*	50.7	58.7	53.8	26.1	53.2	46.4		49.6	58.2	53.9	68.2	692

NUMBER TESTED IN GRADES 6-8													
2012	1	533	292	774	26	151	494		418	417	835	29,211	
2013	1	489	276	733	21	161	460		400	373	773	29,692	
2014	2	418	269	647	23	188	558		345	347	692	30,015	

NUMBER UNSATISFACTORY (Level 1)

Grade	Year	White	African Amer	Hispanic	Econ Disadv	Special Educ	LEP	At Risk	Migrant	Male	Female	All	District	Number Tested (All Students)
3	2012	*	79	22	102	5	12	79		56	47	103	2,466	270
	2013	*	87	25	113	4	9	100		70	45	115	2,181	278
	2014	*	113	21	127	*	5	100		72	64	136	2,649	255
4	2012		98	28	123	7	12	78		69	58	127	2,529	286
	2013	*	95	28	121	10	16	40		63	61	124	2,581	285
	2014	*	105	34	131	6	18	115		74	66	140	2,858	277
5	2012		83	18	97	8	9	59		49	52	101	2,665	294
	2013	*	47	18	62	6	5	45		37	28	65	1,484	286
	2014	*	52	16	62	3	10	66		32	36	68	1,582	270
3-5	2012	*	260	68	322	20	33	216		174	157	331	7,660	850
	2013	1	229	71	296	20	30	185		170	134	304	6,246	849
	2014	3	270	71	320	13	33	281		178	166	344	7,089	802

NUMBER TESTED IN GRADES 3-5													
2012	2	634	211	802	26	93	389		420	430	850	22,173	
2013	6	598	240	809	33	111	363		438	411	849	21,619	
2014	6	577	217	733	23	106	503		400	402	802	21,304	

NUMBER UNSATISFACTORY (Level 1)

Grade	Year	White	African Amer	Hispanic	Econ Disadv	Special Educ	LEP	At Risk	Migrant	Male	Female	All	District	Number Tested (All Students)
6	2012		77	44	113	6	33	92		73	49	122	3,673	265
	2013		80	35	112	4	29	71		57	59	116	4,523	249
	2014		81	54	130	9	41	125		83	53	136	3,679	234
7	2012	*	85	40	118	9	25	98		83	45	128	3,070	291
	2013		76	50	122	8	40	106		80	46	126	3,215	271
	2014		82	41	114	*	35	116		60	64	124	4,075	223
8	2012		54	39	87	3	23	77		54	40	94	2,786	279
	2013	*	37	23	55	*	15	52		29	32	61	1,586	253
	2014	*	43	16	55	5	12	58		31	28	59	1,797	235
6-8	2012	*	216	123	318	18	81	267		210	134	344	9,529	835
	2013	*	193	108	289	17	84	229		166	137	303	9,324	773
	2014	*	206	111	299	17	88	299		174	145	319	9,551	692

NUMBER TESTED IN GRADES 6-8													
2012	1	533	292	774	26	151	494		418	417	835	29,211	
2013	1	489	276	733	21	161	460		400	373	773	29,692	
2014	2	418	269	647	23	188	558		345	347	692	30,015	

PERCENTAGE ADVANCED (Level 3)

Grade	Year	White	African Amer	Hispanic	Econ Disadv	Special Educ	LEP	At Risk	Migrant	Male	Female	All	District	Number Tested (All Students)
3	2012	*	8.2	6.7	7.2	14.3	4.2	3.8		8.9	6.8	7.8	12.6	270
	2013	*	3.2	7.0	4.1	0.0	5.3	1.2		2.7	6.2	4.3	13.6	278
	2014	*	1.0	0.0	1.3	*	0.0	0.0		0.8	1.6	1.2	9.6	255
4	2012		5.4	16.5	8.3	0.0	18.9	5.6		9.8	7.5	8.7	11.2	286
	2013	*	9.0	20.2	11.9	14.3	17.5	11.0		15.4	10.1	12.6	13.5	285
	2014	*	3.6	11.5	5.1	0.0	14.3	4.9		5.1	6.4	5.8	12.0	277
5	2012		6.8	16.7	8.0	0.0	12.5	3.7		10.5	7.9	9.2	11.1	294
	2013	*	8.7	17.2	10.8	15.4	21.2	9.5		14.3	8.3	11.5	13.3	286
	2014	*	6.7	12.2	8.7	16.7	9.4	4.4		9.8	8.8	9.3	11.5	270
3-5	2012	*	6.8	13.7	7.9	3.8	12.9	4.4		9.8	7.4	8.6	11.6	850
	2013	33.3	6.9	15.8	8.9	12.1	17.1	6.1		10.7	8.3	9.5	13.5	849
	2014	33.3	3.6	9.2	5.0	8.7	10.4	3.4		5.3	5.7	5.5	11.1	802

NUMBER TESTED IN GRADE 3-5													
2012	2	634	211	802	26	93	389		420	430	850	22,173	
2013	6	598	240	809	33	111	363		438	411	849	21,619	
2014	6	577	217	733	23	106	503		400	402	802	21,304	

PERCENTAGE ADVANCED (Level 3)

Grade	Year	White	African Amer	Hispanic	Econ Disadv	Special Educ	LEP	At Risk	Migrant	Male	Female	All	District	Number Tested (All Students)
6	2012		2.5	3.9	3.2	0.0	1.4	0.6		3.0	3.1	3.0	8.3	265
	2013		4.3	3.5	3.8	0.0	0.0	1.6		6.1	1.7	4.0	11.3	249
	2014		0.7	2.1	1.4	0.0	1.5	0.5		1.6	0.9	1.3	7.1	234
7	2012	*	2.7	6.1	3.3	0.0	2.6	1.2		2.8	5.3	4.1	10.3	291
	2013		1.8	5.7	3.1	0.0	5.2	2.7		2.0	4.8	3.3	8.7	271
	2014		2.9	1.2	2.5	*	0.0	0.5		3.6	0.9	2.2	10.0	223
8	2012		4.3	4.3	3.9	0.0	2.6	1.8		3.5	5.9	4.7	9.9	279
	2013	*	6.1	11.8	8.4	*	3.4	3.5		7.4	9.1	8.3	15.5	253
	2014	*	3.6	6.5	4.5	0.0	3.1	2.1		4.5	4.8	4.7	13.1	235
6-8	2012	*	3.2	4.8	3.5	0.0	2.0	1.2		3.1	4.8	4.0	9.5	835
	2013	*	4.1	6.9	5.0	0.0	3.1	2.6		5.0	5.4	5.2	11.7	773
	2014	*	2.4	3.3	2.8	0.0	1.6	1.1		3.2	2.3	2.7	10.1	692

NUMBER TESTED IN GRADE 6-8													
2012	1	533	292	774	26	151	494		418	417	835	29,211	
2013	1	489	276	733	21	161	460		400	373	773	29,692	
2014	2	418	269	647	23	188	558		345	347	692	30,015	

AVERAGE PERCENTAGE OF ITEMS CORRECT BY REPORTING CATEGORY

Grade	Year	REPORTING CATEGORY		
		1. Understanding Across Genres (GR 3-5) 1. Understanding/Analysis Across Genres (GR 6-8)	2. Understanding/Analysis of Literary Texts	3. Understanding/Analysis of Informational Texts
3	2012	60.9	51.5	57.3
	2013	56.7	52.6	54.6
	2014	56.4	51.8	46.3
4	2012	56.7	55.6	54.1
	2013	62.8	56.7	54.1
	2014	54.9	53.4	49.3
5	2012	61.5	56.3	63.8
	2013	66.3	65.7	64.9
	2014	66.2	61.2	64.6
3-5	2012	59.7	54.5	58.5
	2013	62.0	58.4	57.9
	2014	59.2	55.5	53.5

AVERAGE PERCENTAGE OF ITEMS CORRECT BY REPORTING CATEGORY

Grade	Year	REPORTING CATEGORY		
		1. Understanding Across Genres (GR 3-5) 1. Understanding/Analysis Across Genres (GR 6-8)	2. Understanding/Analysis of Literary Texts	3. Understanding/Analysis of Informational Texts
6	2012	62.2	57.2	51.7
	2013	63.7	57.4	52.1
	2014	50.2	47.6	48.4
7	2012	60.6	53.3	54.9
	2013	52.7	52.5	59.4
	2014	53.1	50.7	48.1
8	2012	63.7	56.3	59.7
	2013	65.9	65.2	57.4
	2014	64.6	59.7	55.8
6-8	2012	62.1	55.5	55.5
	2013	60.5	58.3	56.4
	2014	56.0	52.7	50.8

PERCENTAGE SATISFACTORY (Levels 2 and 3)

Test	Year	White	African Amer	Hispanic	Econ Disadv	Special Educ	LEP	At Risk	Migrant	Male	Female	All	District
ENGLISH I	2012												
	2013												
	2014		37.4	31.5	36.2	14.3	21.7	29.4		27.1	42.0	34.6	50.9
Tests Taken	2012												
	2013												
	2014		131	127	218	7	69	221		129	131	260	13,789
ENGLISH II	2012												
	2013												
	2014		27.6	33.3	29.5	0.0	13.2	21.7		30.2	30.8	30.5	54.8
Tests Taken	2012												
	2013												
	2014		87	90	149	6	38	152		86	91	177	10,943

NUMBER UNSATISFACTORY (Level 1)

Test	Year	White	African Amer	Hispanic	Econ Disadv	Special Educ	LEP	At Risk	Migrant	Male	Female	All	District
ENGLISH I	2012												
	2013												
	2014		82	87	139	6	54	156		94	76	170	6,774
Tests Taken	2012												
	2013												
	2014		131	127	218	7	69	221		129	131	260	13,789
ENGLISH II	2012												
	2013												
	2014		63	60	105	6	33	119		60	63	123	4,948
Tests Taken	2012												
	2013												
	2014		87	90	149	6	38	152		86	91	177	10,943

PERCENTAGE ADVANCED (Level 3)

Test	Year	White	African Amer	Hispanic	Econ Disadv	Special Educ	LEP	At Risk	Migrant	Male	Female	All	District
ENGLISH I	2012												
	2013												
	2014		0.0	0.0	0.0	0.0	0.0	0.0		0.0	0.0	0.0	3.2
Tests Taken	2012												
	2013												
	2014		131	127	218	7	69	221		129	131	260	13,789
ENGLISH II	2012												
	2013												
	2014		0.0	0.0	0.0	0.0	0.0	0.0		0.0	0.0	0.0	2.7
Tests Taken	2012												
	2013												
	2014		87	90	149	6	38	152		86	91	177	10,943

AVERAGE PERCENTAGE OF ITEMS CORRECT BY REPORTING CATEGORY

ENGLISH I	1. Understanding & Analysis Across Genres	1. Average Rating Short Answer #1 ¹	1. Average Rating Short Answer #2 ¹	2. Understanding & Analysis of Literary Texts	3. Understanding & Analysis of Informational Texts	4. Expository Composition ²	5. Revision	6. Editing
2012								
2013								
2014	57.6	0.9	1.2	48.6	51.0	3.6	60.2	44.3

ENGLISH II	1. Understanding & Analysis Across Genres	1. Average Rating Short Answer #1 ¹	1. Average Rating Short Answer #2 ¹	2. Understanding & Analysis of Literary Texts	3. Understanding & Analysis of Informational Texts	4. Persuasive Composition ²	5. Revision	6. Editing
2012								
2013								
2014	65.9	0.7	0.8	43.6	53.1	3.6	57.1	59.5

¹Short answer rating scale: 0=Insufficient; 1=Partially Sufficient; 2=Sufficient; 3=Exemplary

²Average score points (0-8). A composition is rated twice on a scale of 1 to 4, and the ratings are summed to determine score points for the composition. Score point scale: 0=Nonscorable; 2=Very Limited; 3=between Very Limited and Basic; 4=Basic; 5=between Basic and Satisfactory; 6=Satisfactory; 7=between Satisfactory and Accomplished; 8=Accomplished

PERCENTAGE SATISFACTORY (Levels 2 or 3)

Grade	Year	White	African Amer	Hispanic	Econ Disadv	Special Educ	LEP	At Risk	Migrant	Male	Female	All	District	Number Tested (All Students)
4	2012		54.1	57.9	54.0	20.0	60.0	36.3		47.1	64.4	55.1	60.6	285
	2013	*	59.4	68.2	62.1	57.1	68.3	50.7		55.1	68.2	62.0	63.9	284
	2014	*	56.6	59.7	56.7	28.6	58.5	44.1		51.5	63.3	57.5	61.9	275

NUMBER TESTED IN GRADE 4													
2012		207	76	265	10	35	124		153	132	285	7,039	
2013	1	197	85	269	14	41	73		136	148	284	6,771	
2014	2	196	77	252	7	41	179		136	139	275	7,022	

PERCENTAGE SATISFACTORY (Levels 2 or 3)

Grade	Year	White	African Amer	Hispanic	Econ Disadv	Special Educ	LEP	At Risk	Migrant	Male	Female	All	District	Number Tested (All Students)
7	2012	*	44.9	48.5	46.8	0.0	18.4	27.3		34.5	57.0	46.2	59.2	290
	2013		46.7	48.6	46.7	0.0	46.8	38.2		37.0	59.7	47.4	57.1	270
	2014		50.0	34.6	43.3	*	27.3	36.8		38.5	49.6	44.1	54.6	222

NUMBER TESTED IN GRADE 7													
2012	1	185	99	269	11	38	165		139	151	290	9,456	
2013		165	105	259	9	77	186		146	124	270	9,785	
2014		140	81	201	5	55	182		109	113	222	10,339	

NUMBER UNSATISFACTORY (Level 1)

Grade	Year	White	African Amer	Hispanic	Econ Disadv	Special Educ	LEP	At Risk	Migrant	Male	Female	All	District	Number Tested (All Students)
4	2012		95	32	122	8	14	79		81	47	128	2,772	285
	2013	*	80	27	102	6	13	36		61	47	108	2,442	284
	2014	*	85	31	109	5	17	100		66	51	117	2,675	275

NUMBER TESTED IN GRADE 4													
2012		207	76	265	10	35	124		153	132	285	7,039	
2013	1	197	85	269	14	41	73		136	148	284	6,771	
2014	2	196	77	252	7	41	179		136	139	275	7,022	

NUMBER UNSATISFACTORY (Level 1)

Grade	Year	White	African Amer	Hispanic	Econ Disadv	Special Educ	LEP	At Risk	Migrant	Male	Female	All	District	Number Tested (All Students)
7	2012	*	102	51	143	11	31	120		91	65	156	3,859	290
	2013		88	54	138	9	41	115		92	50	142	4,198	270
	2014		70	53	114	*	40	115		67	57	124	4,690	222

NUMBER TESTED IN GRADE 7													
2012	1	185	99	269	11	38	165		139	151	290	9,456	
2013		165	105	259	9	77	186		146	124	270	9,785	
2014		140	81	201	5	55	182		109	113	222	10,339	

PERCENTAGE ADVANCED (Level 3)

Grade	Year	White	African Amer	Hispanic	Econ Disadv	Special Educ	LEP	At Risk	Migrant	Male	Female	All	District	Number Tested (All Students)
4	2012		3.4	7.9	3.4	0.0	8.6	2.4		4.6	4.5	4.6	5.1	285
	2013	*	3.6	7.1	3.7	7.1	4.9	2.7		6.6	3.4	4.9	4.7	284
	2014	*	1.5	2.6	1.6	0.0	2.4	1.1		0.0	3.6	1.8	3.7	275

NUMBER TESTED IN GRADE 4													
2012		207	76	265	10	35	124		153	132	285	7,039	
2013	1	197	85	269	14	41	73		136	148	284	6,771	
2014	2	196	77	252	7	41	179		136	139	275	7,022	

PERCENTAGE ADVANCED (Level 3)

Grade	Year	White	African Amer	Hispanic	Econ Disadv	Special Educ	LEP	At Risk	Migrant	Male	Female	All	District	Number Tested (All Students)
7	2012	*	0.5	0.0	0.4	0.0	0.0	0.0		0.0	0.7	0.3	3.4	290
	2013		0.0	0.0	0.0	0.0	0.0	0.0		0.0	0.0	0.0	1.5	270
	2014		0.0	0.0	0.0	*	0.0	0.0		0.0	0.0	0.0	3.0	222

NUMBER TESTED IN GRADE 7													
2012	1	185	99	269	11	38	165		139	151	290	9,456	
2013		165	105	259	9	77	186		146	124	270	9,785	
2014		140	81	201	5	55	182		109	113	222	10,339	

AVERAGE PERCENTAGE OF ITEMS CORRECT BY REPORTING CATEGORY

Grade	Year	REPORTING CATEGORY			
		1. Composition ¹ GR 4: Personal Narrative GR 7: Expository	1. Composition ¹ GR 4: Expository GR 7: Personal Narrative	2. Revision	3. Editing
4	2012	2.0	2.0	56.8	55.4
	2013	3.9	3.7	52.9	65.0
	2014	3.9	3.9	61.2	54.9
7	2012	1.7	2.1	60.5	52.5
	2013	3.6	4.3	58.1	55.0
	2014	3.7	4.4	58.6	49.7

¹Average score points (range 0-8). A STAAR composition is rated twice on a scale of 1 to 4, and the ratings are summed to determine score points for the composition. Score point scale: 0=Non-scorable; 2=Very Limited; 3=between Very Limited and Basic; 4=Basic; 5=between Basic and Satisfactory; 6=Satisfactory; 7=between Satisfactory and Accomplished; 8=Accomplished

PERCENTAGE SATISFACTORY (Levels 2 or 3)

Grade	Year	White	African Amer	Hispanic	Econ Disadv	Special Educ	LEP	At Risk	Migrant	Male	Female	All	District	Number Tested (All Students)
3	2012	*	40.9	62.9	50.5	20.0	65.8	48.6		49.2	52.9	51.2	55.4	406
	2013	*	41.2	61.7	50.0	37.5	63.3	44.9		47.8	52.8	50.2	57.5	402
	2014	*	33.2	57.8	44.1	0.0	60.0	40.7		46.3	42.9	44.7	59.3	387
4	2012		37.7	50.3	43.1	18.2	53.7	38.2		41.8	45.2	43.4	53.0	373
	2013	*	40.2	54.5	46.6	23.1	53.5	44.3		47.5	47.6	47.6	57.5	389
	2014	*	33.3	54.6	43.2	12.5	55.7	39.5		42.7	45.3	44.1	59.0	404
5	2012		52.0	67.1	57.4	42.1	65.9	51.7		63.1	54.0	58.5	64.1	393
	2013	*	74.3	81.5	77.5	69.2	85.0	69.6		77.2	79.0	78.0	81.7	355
	2014	*	64.4	84.8	74.1	75.0	83.6	67.9		70.9	78.0	74.6	81.4	351
3-5	2012	*	43.8	60.3	50.5	30.0	62.2	46.4		51.4	51.0	51.2	57.5	1,172
	2013		50.0	51.0	65.4	57.3	44.1	66.3		57.5	58.4	57.9	65.3	1,146
	2014		28.6	42.9	64.9	52.8	37.0	65.5		52.3	55.0	53.7	66.3	1,142

NUMBER TESTED IN GRADES 3-5													
2012	2	635	531	1,117	40	407	655		576	596	1,172	35,372	
2013	6	598	535	1,105	34	401	655		579	567	1,146	34,686	
2014	7	574	558	1,054	27	441	838		562	580	1,142	35,222	

PERCENTAGE SATISFACTORY (Levels 2 or 3)

Grade	Year	White	African Amer	Hispanic	Econ Disadv	Special Educ	LEP	At Risk	Migrant	Male	Female	All	District	Number Tested (All Students)
6	2012		40.4	60.4	49.2	37.5	57.5	39.4		43.5	53.0	48.3	66.4	263
	2013		44.4	49.4	45.6	14.3	41.8	30.7		47.7	44.4	46.2	60.6	249
	2014		35.8	49.5	40.9	27.3	52.2	32.4		37.1	47.2	41.8	64.3	232
7	2012	*	39.2	44.7	40.8	20.0	26.5	22.7		38.1	43.5	40.9	59.9	286
	2013		29.9	55.4	40.2	11.1	54.2	34.4		35.4	45.1	39.8	59.9	266
	2014		35.0	45.1	37.4	*	32.1	29.8		38.3	38.9	38.6	55.1	220
8	2012		40.4	43.1	40.3	22.2	22.2	31.0		41.9	40.6	41.3	51.9	225
	2013	*	73.1	75.0	73.2	*	68.0	67.2		84.0	62.7	73.3	74.0	202
	2014	*	65.1	76.8	69.4	71.4	77.6	65.9		69.5	69.6	69.5	73.2	197
6-8	2012	*	40.0	50.2	43.5	25.9	41.3	30.9		41.1	46.1	43.5	60.3	774
	2013	*	47.6	58.4	51.2	19.0	52.0	43.1		52.7	50.1	51.5	63.7	717
	2014	*	44.8	55.7	48.5	40.9	52.9	42.0		46.9	51.4	49.2	63.3	649

NUMBER TESTED IN GRADES 6-8													
2012	1	498	267	719	27	143	441		394	380	774	26,044	
2013	1	460	250	681	21	152	441		376	341	717	26,676	
2014	2	400	244	604	22	172	533		326	323	649	27,304	

NUMBER UNSATISFACTORY (Level 1)

Grade	Year	White	African Amer	Hispanic	Econ Disadv	Special Educ	LEP	At Risk	Migrant	Male	Female	All	District	Number Tested (All Students)
3	2012	*	123	72	196	8	53	149		94	104	198	5,287	406
	2013	*	127	69	197	5	51	157		108	92	200	5,086	402
	2014	*	135	76	204	7	56	160		110	104	214	4,988	387
4	2012		127	83	199	9	57	131		114	97	211	5,511	373
	2013	*	119	85	199	10	66	98		94	110	204	4,919	389
	2014	*	130	94	212	7	74	185		110	116	226	4,803	404
5	2012		107	56	158	11	44	100		72	91	163	4,228	393
	2013	*	47	31	76	4	18	59		44	34	78	2,035	355
	2014	*	63	26	82	3	22	84		48	41	89	2,088	351
3-5	2012	*	357	211	553	28	154	380		280	292	572	15,026	1,172
	2013	3	293	185	472	19	135	314		246	236	482	12,040	1,146
	2014	5	328	196	498	17	152	429		268	261	529	11,879	1,142

NUMBER TESTED IN GRADES 3-5													
2012	2	635	531	1,117	40	407	655		576	596	1,172	35,372	
2013	6	598	535	1,105	34	401	655		579	567	1,146	34,686	
2014	7	574	558	1,054	27	441	838		562	580	1,142	35,222	

NUMBER UNSATISFACTORY (Level 1)

Grade	Year	White	African Amer	Hispanic	Econ Disadv	Special Educ	LEP	At Risk	Migrant	Male	Female	All	District	Number Tested (All Students)
6	2012		96	40	126	5	31	94		74	62	136	3,327	263
	2013		90	43	129	6	32	88		69	65	134	4,133	249
	2014		88	47	130	8	32	125		78	57	135	3,478	232
7	2012	*	113	52	157	8	25	126		86	83	169	3,705	286
	2013		115	45	152	8	33	120		93	67	160	3,851	266
	2014		89	45	124	*	38	127		66	69	135	4,536	220
8	2012		90	41	123	7	28	109		72	60	132	3,319	225
	2013	*	36	16	51	*	8	43		16	38	54	1,709	202
	2014	*	44	16	57	2	11	57		29	31	60	2,001	197
6-8	2012	*	299	133	406	20	84	329		232	205	437	10,351	774
	2013	*	241	104	332	17	73	251		178	170	348	9,693	717
	2014	*	221	108	311	13	81	309		173	157	330	10,015	649

NUMBER TESTED IN GRADES 6-8													
2012	1	498	267	719	27	143	441		394	380	774	26,044	
2013	1	460	250	681	21	152	441		376	341	717	26,676	
2014	2	400	244	604	22	172	533		326	323	649	27,304	

PERCENTAGE ADVANCED (Level 3)

Grade	Year	White	African Amer	Hispanic	Econ Disadv	Special Educ	LEP	At Risk	Migrant	Male	Female	All	District	Number Tested (All Students)
3	2012	*	1.4	8.8	5.1	0.0	10.3	5.5		5.9	4.1	4.9	7.9	406
	2013	*	1.9	7.8	4.8	0.0	9.4	4.6		3.9	5.6	4.7	9.1	402
	2014	*	2.0	8.3	5.2	0.0	7.9	4.4		5.9	4.4	5.2	10.4	387
4	2012		2.9	10.2	4.9	9.1	9.8	5.7		6.1	6.2	6.2	6.1	373
	2013	*	3.5	14.4	8.3	15.4	14.1	11.9		10.1	8.1	9.0	9.5	389
	2014	*	1.5	13.5	8.0	0.0	14.4	7.8		7.8	7.5	7.7	14.0	404
5	2012		4.0	14.7	7.5	0.0	13.2	8.2		8.2	9.1	8.7	10.4	393
	2013	*	6.6	20.2	13.0	7.7	21.7	13.9		17.1	8.6	13.2	12.8	355
	2014	*	7.9	20.5	13.9	8.3	20.9	10.7		17.6	11.8	14.5	15.7	351
3-5	2012	*	2.8	11.1	5.8	2.5	11.1	6.3		6.8	6.4	6.6	8.1	1,172
	2013		16.7	3.8	14.0	8.5	8.8	14.7	9.3	10.2	7.4	8.8	10.4	1,146
	2014		14.3	3.7	14.0	8.8	3.7	14.3	7.6	10.0	7.9	8.9	13.3	1,142

NUMBER TESTED IN GRADE 3-5													
2012	2	635	531	1,117	40	407	709		576	596	1,172	35,372	
2013	6	598	535	1,105	34	401	655		579	567	1,146	34,686	
2014	7	574	558	1,054	27	441	838		562	580	1,142	35,222	

PERCENTAGE ADVANCED (Level 3)

Grade	Year	White	African Amer	Hispanic	Econ Disadv	Special Educ	LEP	At Risk	Migrant	Male	Female	All	District	Number Tested (All Students)
6	2012		2.5	8.9	5.2	0.0	5.5	3.2		6.1	3.8	4.9	9.8	263
	2013		1.9	3.5	2.5	0.0	1.8	1.6		2.3	2.6	2.4	8.5	249
	2014		0.7	3.2	1.8	0.0	1.5	0.5		0.8	2.8	1.7	9.6	232
7	2012	*	2.2	4.3	3.0	0.0	0.0	0.0		2.9	3.4	3.1	6.3	286
	2013		0.0	2.0	0.8	0.0	1.4	0.5		0.7	0.8	0.8	4.8	266
	2014		0.7	2.4	1.5	*	0.0	0.0		1.9	0.9	1.4	6.7	220
8	2012		0.0	0.0	0.0	0.0	0.0	0.0		0.0	0.0	0.0	0.4	225
	2013	*	0.0	0.0	0.0	*	0.0	0.0		0.0	0.0	0.0	0.9	202
	2014	*	0.0	1.4	0.5	0.0	0.0	0.0		0.0	1.0	0.5	1.0	197
6-8	2012	*	1.6	4.9	2.9	0.0	2.8	1.1		3.0	2.6	2.8	6.1	774
	2013	*	0.7	2.0	1.2	0.0	1.3	0.7		1.1	1.2	1.1	5.3	717
	2014	*	0.5	2.5	1.3	0.0	0.6	0.2		0.9	1.5	1.2	6.2	649

NUMBER TESTED IN GRADE 6-8													
2012	1	498	267	719	27	143	476		394	380	774	26,044	
2013	1	460	250	681	21	152	441		376	341	717	26,676	
2014	2	400	244	604	22	172	533		326	323	649	27,304	

AVERAGE PERCENTAGE OF ITEMS CORRECT BY REPORTING CATEGORY

Grade	Year	REPORTING CATEGORY				
		1. Numbers, Operations, and Quantitative Reasoning	2. Patterns, Relationships, and Algebraic Reasoning	3. Geometry and Spatial Reasoning	4. Measurement	5. Probability and Statistics
3	2012	54.0	57.5	66.4	51.2	43.5
	2013	55.5	55.0	64.0	58.6	57.1
	2014	55.8	53.5	53.0	55.2	50.4
4	2012	56.8	54.8	58.2	49.2	50.9
	2013	58.8	58.5	64.1	54.5	47.7
	2014	53.7	60.5	59.5	52.1	49.0
5	2012	57.4	58.3	60.9	50.3	57.2
	2013	65.9	62.7	65.6	61.0	68.7
	2014	66.7	64.1	67.6	57.5	62.0
3-5	2012	56.0	56.9	61.9	50.3	50.4
	2013	59.8	58.6	64.5	57.9	57.5
	2014	58.4	59.2	59.8	54.8	53.5

AVERAGE PERCENTAGE OF ITEMS CORRECT BY REPORTING CATEGORY

Grade	Year	REPORTING CATEGORY				
		1. Numbers, Operations, and Quantitative Reasoning	2. Patterns, Relationships, and Algebraic Reasoning	3. Geometry and Spatial Reasoning	4. Measurement	5. Probability and Statistics
6	2012	41.4	48.2	45.6	37.7	43.6
	2013	45.3	46.5	42.5	34.1	42.6
	2014	42.2	40.3	40.1	42.0	43.7
7	2012	41.0	43.7	47.3	35.8	39.8
	2013	39.0	44.9	45.7	32.3	35.9
	2014	48.3	40.8	41.0	31.3	44.6
8	2012	40.2	36.2	33.1	32.0	44.8
	2013	48.9	51.1	45.5	48.9	38.0
	2014	46.2	48.7	45.1	43.1	48.5
6-8	2012	40.9	43.0	42.6	35.3	42.6
	2013	43.9	47.2	44.5	37.6	38.8
	2014	45.5	43.0	41.9	38.7	45.5

PERCENTAGE SATISFACTORY (Levels 2 or 3)

Test	Year	White	African Amer	Hispanic	Econ Disadv	Special Educ	LEP	At Risk	Migrant	Male	Female	All	District
ALGEBRA I	2012		75.2	82.4	78.7	14.3	70.6	70.1		77.0	77.4	77.3	74.7
	2013		57.6	55.1	55.8	12.5	16.7	32.6		55.0	57.8	56.4	72.5
	2014		64.8	81.4	74.0	14.3	78.0	72.0		71.4	74.7	73.1	78.0
Tests Taken	2012		101	51	136	7	17	92		61	93	154	8,795
	2013		92	69	147	8	24	92		80	83	163	9,251
	2014		88	86	150	7	50	125		84	91	175	9,524

NUMBER UNSATISFACTORY (Level 1)

Test	Year	White	African Amer	Hispanic	Econ Disadv	Special Educ	LEP	At Risk	Migrant	Male	Female	All	District
ALGEBRA I	2012		25	9	29	6	5	26		14	21	35	2,226
	2013		39	31	65	7	20	62		36	35	71	2,540
	2014		31	16	39	6	11	35		24	23	47	2,099
Tests Taken	2012		101	51	136	7	17	92		61	93	154	8,795
	2013		92	69	147	8	24	92		80	83	163	9,251
	2014		88	86	150	7	50	125		84	91	175	9,524

PERCENTAGE ADVANCED (Level 3)

Test	Year	White	African Amer	Hispanic	Econ Disadv	Special Educ	LEP	At Risk	Migrant	Male	Female	All	District
ALGEBRA I	2012		1.0	11.8	5.9	0.0	5.9	1.1		6.6	4.3	5.2	7.0
	2013		1.1	4.3	3.4	0.0	0.0	0.0		2.5	3.6	3.1	8.6
	2014		5.7	14.0	9.3	0.0	10.0	5.6		10.7	8.8	9.7	9.9
Tests Taken	2012		101	51	136	7	17	87		61	93	154	8,795
	2013		92	69	147	8	24	92		80	83	163	9,251
	2014		88	86	150	7	50	125		84	91	175	9,524

AVERAGE PERCENTAGE OF ITEMS CORRECT BY REPORTING CATEGORY

ALGEBRA I	1. Functional Relationships	2. Properties and Attributes of Functions	3. Linear Functions	4. Linear Equations and Inequalities	5. Quadratic and Other Nonlinear Functions
2012	50.6	48.6	50.8	41.0	50.6
2013	44.9	43.1	41.0	45.0	43.4
2014	48.0	48.8	53.9	48.3	48.3

PERCENTAGE SATISFACTORY (Levels 2 or 3)

Grade	Year	White	African Amer	Hispanic	Econ Disadv	Special Educ	LEP	At Risk	Migrant	Male	Female	All	District	Number Tested (All Students)
5	2012		49.1	55.8	49.7	29.4	50.8	40.3		58.3	44.3	51.2	58.2	330
	2013	*	61.7	76.8	66.7	31.3	78.5	57.9		70.4	63.9	67.4	65.1	316
	2014	*	52.8	54.0	52.3	37.5	50.0	42.0		57.7	49.3	53.4	61.3	294

NUMBER TESTED IN GRADE 5													
2012		226	104	310	17	65	144		163	167	330	10,697	
2013	2	183	125	297	16	79	159		169	147	316	10,180	
2014	1	178	113	264	16	76	205		142	152	294	9,073	

PERCENTAGE SATISFACTORY (Levels 2 or 3)

Grade	Year	White	African Amer	Hispanic	Econ Disadv	Special Educ	LEP	At Risk	Migrant	Male	Female	All	District	Number Tested (All Students)
8	2012		34.4	47.8	39.4	*	25.6	25.1		39.4	39.0	39.2	54.0	273
	2013	*	65.2	61.7	63.8	*	44.0	48.1		67.5	60.5	63.8	65.8	243
	2014	*	49.6	67.0	57.1	14.3	64.6	50.0		55.4	58.4	57.0	61.9	237

NUMBER TESTED IN GRADE 8													
2012		180	90	246	4	39	167		137	136	273	9,431	
2013	1	158	81	229	4	25	135		114	129	243	8,998	
2014	2	141	94	217	7	65	188		112	125	237	9,466	

NUMBER UNSATISFACTORY (Level 1)

Grade	Year	White	African Amer	Hispanic	Econ Disadv	Special Educ	LEP	At Risk	Migrant	Male	Female	All	District	Number Tested (All Students)
5	2012		115	46	156	12	32	86		68	93	161	4476	330
	2013	*	70	29	99	11	17	67		50	53	103	3551	316
	2014	*	84	52	126	10	38	119		60	77	137	3511	294

NUMBER TESTED IN GRADE 5													
2012		226	104	310	17	65	144		163	167	330	10,697	
2013	2	183	125	297	16	79	159		169	147	316	10,180	
2014	1	178	113	264	16	76	205		142	152	294	9,073	

NUMBER UNSATISFACTORY (Level 1)

Grade	Year	White	African Amer	Hispanic	Econ Disadv	Special Educ	LEP	At Risk	Migrant	Male	Female	All	District	Number Tested (All Students)
8	2012		118	47	149	*	29	125		83	83	166	4335	273
	2013	*	55	31	83	*	14	70		37	51	88	3074	243
	2014	*	71	31	93	6	23	94		50	52	102	3605	237

NUMBER TESTED IN GRADE 8													
2012		180	90	246	4	39	167		137	136	273	9,431	
2013	1	158	81	229	4	25	135		114	129	243	8,998	
2014	2	141	94	217	7	65	188		112	125	237	9,466	

PERCENTAGE ADVANCED (Level 3)

Grade	Year	White	African Amer	Hispanic	Econ Disadv	Special Educ	LEP	At Risk	Migrant	Male	Female	All	District	Number Tested (All Students)
5	2012		5.3	10.6	5.8	0.0	9.2	4.2		7.4	6.6	7.0	6.5	330
	2013	*	3.8	8.8	5.4	0.0	10.1	5.0		5.9	5.4	5.7	6.6	316
	2014	*	1.7	5.3	2.7	0.0	5.3	2.4		4.9	2.0	3.4	5.3	294

NUMBER TESTED IN GRADE 5													
2012		226	104	310	17	65	144		163	167	330	10,697	
2013	2	183	125	297	16	79	159		169	147	316	10,180	
2014	1	178	113	264	16	76	205		142	152	294	9,073	

PERCENTAGE ADVANCED (Level 3)

Grade	Year	White	African Amer	Hispanic	Econ Disadv	Special Educ	LEP	At Risk	Migrant	Male	Female	All	District	Number Tested (All Students)
8	2012		0.0	0.0	0.0	*	0.0	0.0		0.0	0.0	0.0	4.2	273
	2013	*	1.3	4.9	2.6	*	0.0	0.0		3.5	2.3	2.9	7.1	243
	2014	*	5.0	10.6	6.9	0.0	7.7	3.2		8.9	5.6	7.2	11.3	237

NUMBER TESTED IN GRADE 8													
2012		180	90	246	4	39	167		137	136	273	9,431	
2013	1	158	81	229	4	25	135		114	129	243	8,998	
2014	2	141	94	217	7	65	188		112	125	237	9,466	

AVERAGE PERCENTAGE OF ITEMS CORRECT BY REPORTING CATEGORY

Grade	Year	REPORTING CATEGORY			
		1. Matter and Energy	2. Force, Motion, and Energy	3. Earth and Space	4. Organisms and Environments
5	2012	72.2	72.2	60.6	59.2
	2013	66.5	71.5	59.9	63.4
	2014	60.0	61.9	56.0	60.8
8	2012	47.7	49.3	49.2	49.8
	2013	62.8	52.5	56.0	55.8
	2014	60.2	55.0	53.9	64.7

PERCENTAGE SATISFACTORY (Levels 2 and 3)

Test	Year	White	African Amer	Hispanic	Econ Disadv	Special Educ	LEP	At Risk	Migrant	Male	Female	All	District
BIOLOGY	2012		75.0	75.6	75.2	33.3	66.7	69.0		78.7	73.6	75.6	82.9
	2013		69.7	68.9	67.7	25.0	64.0	57.9		67.1	71.2	69.1	84.4
	2014		85.9	84.7	83.1	100.0	81.8	81.9		79.5	91.1	85.5	89.8
Tests Taken	2012		76	41	101	9	18	84		47	72	119	8,881
	2013		76	61	124	8	25	95		73	66	139	9,374
	2014		78	72	130	7	33	116		73	79	152	9,672

NUMBER UNSATISFACTORY (Level 1)

Test	Year	White	African Amer	Hispanic	Econ Disadv	Special Educ	LEP	At Risk	Migrant	Male	Female	All	District
BIOLOGY	2012		19	10	25	6	6	26		10	19	29	1,522
	2013		23	19	40	6	9	40		24	19	43	1,467
	2014		11	11	22	0	6	21		15	7	22	987
Tests Taken	2012		76	41	101	9	18	84		47	72	119	8,881
	2013		76	61	124	8	25	95		73	66	139	9,374
	2014		78	72	130	7	33	116		73	79	152	9,672

PERCENTAGE ADVANCED (Level 3)

Test	Year	White	African Amer	Hispanic	Econ Disadv	Special Educ	LEP	At Risk	Migrant	Male	Female	All	District
BIOLOGY	2012		0.0	0.0	0.0	0.0	0.0	0.0		0.0	0.0	0.0	4.8
	2013		0.0	3.3	1.6	0.0	0.0	0.0		2.7	0.0	1.4	7.5
	2014		1.3	2.8	2.3	0.0	0.0	0.0		1.4	2.5	2.0	7.5
Tests Taken	2012		76	41	101	9	18	84		47	72	119	8,881
	2013		76	61	124	8	25	95		73	66	139	9,374
	2014		78	72	130	7	33	116		73	79	152	9,672

AVERAGE PERCENTAGE OF ITEMS CORRECT BY REPORTING CATEGORY

BIOLOGY	1. Cell Structure and Function	2. Mechanisms of Genetics	3. Biological Evolution and Classification	4. Biological Processes and Systems	5. Interdependence within Environmental Systems
2012	46.4	49.3	50.1	40.5	46.4
2013	45.9	48.6	50.1	41.0	45.8
2014	47.7	55.3	56.3	56.5	48.6

PERCENTAGE SATISFACTORY (Levels 2 or 3)

Grade	Year	White	African Amer	Hispanic	Econ Disadv	Special Educ	LEP	At Risk	Migrant	Male	Female	All	District	Number Tested (All Students)
8	2012		35.0	45.6	39.4	*	23.7	27.5		40.6	37.0	38.8	52.5	273
	2013	*	43.0	40.2	43.5	*	12.0	27.9		47.4	36.9	41.8	59.3	244
	2014	*	27.7	39.4	32.3	0.0	38.5	27.1		36.6	28.8	32.5	53.5	237

NUMBER TESTED IN GRADE 8													
2012		180	90	246	4	38	167		138	135	273	9,392	
2013	1	158	82	230	4	25	136		114	130	244	8,991	
2014	2	141	94	217	7	65	188		112	125	237	9,464	

NUMBER UNSATISFACTORY (Level 1)

Grade	Year	White	African Amer	Hispanic	Econ Disadv	Special Educ	LEP	At Risk	Migrant	Male	Female	All	District	Number Tested (All Students)
8	2012		117	49	149	*	29	121		82	85	167	4462	273
	2013	*	90	49	130	*	22	98		60	82	142	3656	244
	2014	*	102	57	147	7	40	137		71	89	160	4402	237

NUMBER TESTED IN GRADE8													
2012		180	90	246	4	38	167		138	135	273	9,392	
2013	1	158	82	230	4	25	136		114	130	244	8,991	
2014	2	141	94	217	7	65	188		112	125	237	9,464	

PERCENTAGE ADVANCED (Level 3)

Grade	Year	White	African Amer	Hispanic	Econ Disadv	Special Educ	LEP	At Risk	Migrant	Male	Female	All	District	Number Tested (All Students)
8	2012		1.1	5.6	2.4	*	2.6	0.6		4.3	0.7	2.6	7.1	273
	2013	*	1.9	3.7	3.0	*	0.0	0.0		3.5	2.3	2.9	8.8	244
	2014	*	1.4	2.1	0.9	0.0	1.5	0.5		2.7	0.8	1.7	7.3	237

NUMBER TESTED IN GRADE 8													
2012		180	90	246	4	38	167		138	135	273	9,392	
2013	1	158	82	230	4	25	136		114	130	244	8,991	
2014	2	141	94	217	7	65	188		112	125	237	9,464	

AVERAGE PERCENTAGE OF ITEMS CORRECT BY REPORTING CATEGORY

Grade	Year	REPORTING CATEGORY			
		1. History	2. Geography and Culture	3. Government and Citizenship	4. Economics, Science, Technology, and Society
8	2012	45.0	46.9	43.4	44.2
	2013	50.6	55.5	40.5	44.6
	2014	47.0	38.4	44.0	50.1

PERCENTAGE SATISFACTORY (Levels 2 or 3)

Test	Year	White	African Amer	Hispanic	Econ Disadv	Special Educ	LEP	At Risk	Migrant	Male	Female	All	District
U.S. HISTORY	2012												*
	2013			*	*					*		*	90.2
	2014		86.2	89.6	89.0	*	81.0	84.9		90.7	85.7	87.7	92.0
Tests Taken	2012												4
	2013			1	1					1		2	51
	2014		58	48	91	4	21	86		43	63	106	7,801

NUMBER UNSATISFACTORY (Level 1)

Test	Year	White	African Amer	Hispanic	Econ Disadv	Special Educ	LEP	At Risk	Migrant	Male	Female	All	District
U.S. HISTORY	2012												*
	2013			*	*					*		*	5
	2014		8	5	10	*	4	13		4	9	13	625
Tests Taken	2012												4
	2013			1	1					1		2	51
	2014		58	48	91	4	21	86		43	63	106	7,801

PERCENTAGE ADVANCED (Level 3)

Test	Year	White	African Amer	Hispanic	Econ Disadv	Special Educ	LEP	At Risk	Migrant	Male	Female	All	District
U.S. HISTORY	2012												*
	2013			*	*					*		*	2.0
	2014		12.1	10.4	12.1	*	4.8	5.8		14.0	9.5	11.3	10.3
Tests Taken	2012												4
	2013			1	1					1		2	51
	2014		58	48	91	4	21	86		43	63	106	7,801

AVERAGE PERCENTAGE OF ITEMS CORRECT BY REPORTING CATEGORY

U.S. HISTORY	1. History	2. Geography and Culture	3. Government and Citizenship	4. Economics, Science, Technology, and Society
2012				
2013	*	*	*	*
2014	56.8	63.1	61.2	59.1

PERCENTAGE SATISFACTORY (Levels 2 or 3)

Grade	Year	White	African Amer	Hispanic	Econ Disadv	Special Educ	LEP	At Risk	Migrant	Male	Female	All	District	Number Tested (All Students)
3	2012			73.5	72.4	*	72.2	72.4		69.4	76.0	73.0	65.5	137
	2013			69.2	69.4	*	68.6	68.8		65.2	73.1	69.4	69.6	144
	2014	*		67.7	67.7	*	66.4	66.4		62.7	72.9	67.2	65.2	134
4	2012			58.7	57.8	*	59.3	58.7		54.3	63.0	58.7	64.4	92
	2013			66.1	66.1		66.7	66.1		57.1	73.1	66.4	61.0	116
	2014			50.4	50.0	*	48.8	48.8		37.5	60.0	50.4	60.8	131
5	2012			77.8	78.4	*	77.6	77.6		66.0	91.3	77.8	72.1	99
	2013			85.1	85.1	*	85.1	86.1		84.1	86.7	85.1	86.5	74
	2014			78.8	78.2		78.8	78.8		70.6	84.6	79.1	83.0	86
3-5	2012			70.6	70.1	44.4	70.2	70.1		64.0	76.6	70.4	66.8	328
	2013			71.7	71.8	*	71.6	71.6		67.9	75.4	71.9	70.6	334
	2014	*		63.9	63.6	0.0	63.0	63.0		55.8	71.0	63.8	68.7	351

NUMBER TESTED IN GRADES 3-5													
2012			327	321	9	322	324		161	167	328	14,102	
2013			332	333	4	328	328		159	175	334	13,810	
2014	1		349	330	6	343	343		165	186	351	14,654	

NUMBER UNSATISFACTORY (Level 1)

Grade	Year	White	African Amer	Hispanic	Econ Disadv	Special Educ	LEP	At Risk	Migrant	Male	Female	All	District	Number Tested (All Students)
3	2012			36	37	*	37	37		19	18	37	1,957	137
	2013			44	44	*	44	44		23	21	44	1,697	144
	2014	*		43	42	*	44	44		28	16	44	2,005	134
4	2012			38	38	*	37	38		21	17	38	1,728	92
	2013			39	39		38	39		21	18	39	1,915	116
	2014			65	61	*	65	65		35	30	65	1,891	131
5	2012			22	21	*	22	22		18	4	22	998	99
	2013			11	11	*	11	10		7	4	11	449	74
	2014			18	17		18	18		10	8	18	692	86
3-5	2012			96	96	5	96	97		58	39	97	4,683	328
	2013			94	94	*	93	93		51	43	94	4,061	334
	2014	*		126	120	6	127	127		73	54	127	4,588	351

NUMBER TESTED IN GRADES 3-5													
2012			327	321	9	322	324			161	167	328	14,102
2013			332	333	4	328	328			159	175	334	13,810
2014	1		349	330	6	343	343			165	186	351	14,654

PERCENTAGE ADVANCED (Level 3)

Grade	Year	White	African Amer	Hispanic	Econ Disadv	Special Educ	LEP	At Risk	Migrant	Male	Female	All	District	Number Tested (All Students)
3	2012			18.4	17.9	*	18.0	17.9		9.7	25.3	18.2	13.4	137
	2013			17.5	18.1	*	17.1	17.0		15.2	20.5	18.1	17.4	144
	2014	*		10.5	10.0	*	9.9	9.9		9.3	11.9	10.4	17.6	134
4	2012			13.0	12.2	*	13.2	13.0		6.5	19.6	13.0	13.0	92
	2013			17.4	16.5		17.5	17.4		8.2	23.9	17.2	13.4	116
	2014			14.5	13.1	*	13.4	13.4		10.7	17.3	14.5	12.5	131
5	2012			16.2	15.5	*	16.3	16.3		11.3	21.7	16.2	12.1	99
	2013			13.5	13.5	*	13.5	13.9		11.4	16.7	13.5	11.6	74
	2014			14.1	12.8		14.1	14.1		5.9	19.2	14.0	15.8	86
3-5	2012			16.2	15.6	11.1	16.1	16.0		9.3	22.8	16.2	12.9	328
	2013			16.6	16.5	*	16.5	16.5		11.9	21.1	16.8	14.6	334
	2014	*		12.9	11.8	0.0	12.2	12.2		9.1	16.1	12.8	15.4	351

NUMBER TESTED IN GRADE 3-5													
2012			327	321	9	322	324		161	167	328	14,102	
2013			332	333	4	328	328		159	175	334	13,810	
2014	1		349	330	6	343	343		165	186	351	14,654	

AVERAGE PERCENTAGE OF ITEMS CORRECT BY REPORTING CATEGORY

Grade	Year	REPORTING CATEGORY		
		1. Understanding Across Genres	2. Understanding/Analysis of Literary Texts	3. Understanding/Analysis of Informational Texts
3	2012	69.2	61.5	52.6
	2013	59.7	59.1	62.0
	2014	64.8	55.4	56.3
4	2012	53.0	60.3	53.7
	2013	61.6	65.5	55.0
	2014	58.8	54.8	56.2
5	2012	65.9	65.9	61.9
	2013	60.3	61.5	68.5
	2014	59.4	64.6	65.0
3-5	2012	63.7	62.5	55.7
	2013	60.5	61.8	61.0
	2014	61.2	57.4	58.4

PERCENTAGE SATISFACTORY (Levels 2 or 3)

Grade	Year	White	African Amer	Hispanic	Econ Disadv	Special Educ	LEP	At Risk	Migrant	Male	Female	All	District	Number Tested (All Students)
4	2012			64.9	64.1	*	65.6	64.9		62.5	67.4	64.9	68.9	94
	2013			68.7	68.7		69.3	68.7		60.0	75.8	69.0	62.2	116
	2014			45.5	44.7	*	44.5	44.5		28.6	57.9	45.5	65.6	132

NUMBER TESTED IN GRADE 4													
2012			94	92	2	93	94		48	46	94	4,905	
2013			115	115		114	115		50	66	116	4,958	
2014			132	123	3	128	128		56	76	132	4,841	

NUMBER UNSATISFACTORY (Level 1)

Grade	Year	White	African Amer	Hispanic	Econ Disadv	Special Educ	LEP	At Risk	Migrant	Male	Female	All	District	Number Tested (All Students)
4	2012			33	33	*	32	33		18	15	33	1,524	94
	2013			36	36		35	36		20	16	36	1,876	116
	2014			72	68	*	71	71		40	32	72	1,667	132

NUMBER TESTED IN GRADE 4													
2012			94	92	2	93	94		48	46	94	4,905	
2013			115	115		114	115		50	66	116	4,958	
2014			132	123	3	128	128		56	76	132	4,841	

PERCENTAGE ADVANCED (Level 3)

Grade	Year	White	African Amer	Hispanic	Econ Disadv	Special Educ	LEP	At Risk	Migrant	Male	Female	All	District	Number Tested (All Students)
4	2012			3.2	3.3	*	3.2	3.2		2.1	4.3	3.2	3.2	94
	2013			2.6	2.6		2.6	2.6		0.0	4.5	2.6	3.6	116
	2014			3.8	3.3	*	3.9	3.9		1.8	5.3	3.8	5.9	132

NUMBER TESTED IN GRADE 4													
2012			94	92	2	93	94		48	46	94	4,905	
2013			115	115		114	115		50	66	116	4,958	
2014			132	123	3	128	128		56	76	132	4,841	

AVERAGE PERCENTAGE OF ITEMS CORRECT BY REPORTING CATEGORY

Grade	Year	REPORTING CATEGORY			
		1. Composition ¹ Personal Narrative	1. Composition ¹ Expository	2. Revision	3. Editing
4	2012	2.0	1.9	61.1	61.1
	2013	4.4	4.1	61.0	67.1
	2014	4.1	3.8	57.7	58.2

¹Average score points (range 0-8). A STAAR composition is rated twice on a scale of 1 to 4, and the ratings are summed to determine score points for the composition. Score point scale: 0=Non-scorable; 2=Very Limited; 3=between Very Limited and Basic; 4=Basic; 5=between Basic and Satisfactory; 6=Satisfactory; 7=between Satisfactory and Accomplished; 8=Accomplished

PERCENTAGE SATISFACTORY (Levels 2 or 3)

Grade	Year	White	African Amer	Hispanic	Econ Disadv	Special Educ	LEP	At Risk	Migrant	Male	Female	All	District	Number Tested (All Students)
3	2012			*	*		*	*		*		*	36.6	3
	2013			*	*		*	*			*	*	20.5	1
	2014			*	*		*	*			*	*	23.0	1
4	2012			*	*		*	*		*	*	*	28.4	3
	2013												27.3	0
	2014			*	*		*	*			*	*	22.8	2
5	2012			*	*		*	*		*	*	*	24.1	3
	2013			*	*		*	*		*	*	*	41.5	3
	2014			*	*		*	*		*	*	*	38.8	4
3-5	2012			11.1	11.1		12.5	12.5		14.3	*	11.1	31.7	9
	2013			*	*		*	*		*	*	*	30.9	4
	2014			14.3	16.7		14.3	14.3		*	0.0	14.3	29.2	7

NUMBER TESTED IN GRADES 3-5													
2012			9	9		8	8		7	2	9	259	
2013			4	4		4	3		1	3	4	233	
2014			7	6		7	7		1	6	7	295	

NUMBER UNSATISFACTORY (Level 1)

Grade	Year	White	African Amer	Hispanic	Econ Disadv	Special Educ	LEP	At Risk	Migrant	Male	Female	All	District	Number Tested (All Students)
3	2012			*	*		*	*		*		*	83	3
	2013			*	*		*	*			*	*	58	1
	2014			*	*		*	*			*	*	77	1
4	2012			*	*		*	*		*	*	*	53	3
	2013												48	0
	2014			*	*		*	*			*	*	61	2
5	2012			*	*		*	*		*	*	*	41	3
	2013			*	*		*	*		*	*	*	55	3
	2014			*	*		*	*		*	*	*	71	4
3-5	2012			8	8		7	7		6	*	8	177	9
	2013			*	*		*	*		*	*	*	161	4
	2014			6	5		6	6		*	6	6	209	7

NUMBER TESTED IN GRADES 3-5													
2012			9	9		8	8		7	2	9	259	
2013			4	4		4	3		1	3	4	233	
2014			7	6		7	7		1	6	7	295	

PERCENTAGE ADVANCED (Level 3)

Grade	Year	White	African Amer	Hispanic	Econ Disadv	Special Educ	LEP	At Risk	Migrant	Male	Female	All	District	Number Tested (All Students)
3	2012			*	*		*	*		*		*	0.8	3
	2013			*	*		*	*			*	*	1.4	1
	2014			*	*		*	*			*	*	0.0	1
4	2012			*	*		*	*		*	*	*	2.7	3
	2013												3.0	0
	2014			*	*		*	*			*	*	1.3	2
5	2012			*	*		*	*		*	*	*	1.9	3
	2013			*	*		*	*		*	*	*	1.1	3
	2014			*	*		*	*		*	*	*	0.9	4
3-5	2012			0.0	0.0		0.0	0.0		0.0	*	0.0	1.5	9
	2013			*	*		*	*		*	*	*	1.7	4
	2014			0.0	0.0		0.0	0.0		*	0.0	0.0	0.7	7

NUMBER TESTED IN GRADE 3-5													
2012			9	9		8	8		7	2	9	259	
2013			4	4		4	3		1	3	4	233	
2014			7	6		7	7		1	6	7	295	

AVERAGE PERCENTAGE OF ITEMS CORRECT BY REPORTING CATEGORY

Grade	Year	REPORTING CATEGORY				
		1. Numbers, Operations, and Quantitative Reasoning	2. Patterns, Relationships, and Algebraic Reasoning	3. Geometry and Spatial Reasoning	4. Measurement	5. Probability and Statistics
3	2012	*	*	*	*	*
	2013	*	*	*	*	*
	2014	*	*	*	*	*
4	2012	*	*	*	*	*
	2013					
	2014	*	*	*	*	*
5	2012	*	*	*	*	*
	2013	*	*	*	*	*
	2014	*	*	*	*	*
3-5	2012	37.8	44.9	44.7	43.1	35.5
	2013	*	*	*	*	*
	2014	43.7	42.3	39.8	33.9	34.3

PERCENTAGE SATISFACTORY (Levels 2 or 3)

Grade	Year	White	African Amer	Hispanic	Econ Disadv	Special Educ	LEP	At Risk	Migrant	Male	Female	All	District	Number Tested (All Students)
5	2012			55.2	55.4	*	56.1	56.1		60.0	50.0	55.2	45.4	67
	2013			58.7	58.7	*	58.7	60.0		56.7	62.5	58.7	43.0	46
	2014			52.3	52.5		51.6	51.6		57.1	48.6	52.3	55.6	65

NUMBER TESTED IN GRADE 5													
2012			67	65	4	66	66		35	32	67	1,164	
2013			46	46	1	46	45		30	16	46	1,122	
2014			65	59		64	64		28	37	65	2,304	

NUMBER UNSATISFACTORY (Level 1)

Grade	Year	White	African Amer	Hispanic	Econ Disadv	Special Educ	LEP	At Risk	Migrant	Male	Female	All	District	Number Tested (All Students)
5	2012			30	29	*	29	29		14	16	30	636	67
	2013			19	19	*	19	18		13	6	19	640	46
	2014			31	28		31	31		12	19	31	1022	65

NUMBER TESTED IN GRADE 5													
2012			67	65	4	66	66		35	32	67	1,164	
2013			46	46	1	46	45		30	16	46	1,122	
2014			65	59		64	64		28	37	65	2,304	

PERCENTAGE ADVANCED (Level 3)

Grade	Year	White	African Amer	Hispanic	Econ Disadv	Special Educ	LEP	At Risk	Migrant	Male	Female	All	District	Number Tested (All Students)
5	2012			0.0	0.0	*	0.0	0.0		0.0	0.0	0.0	2.2	67
	2013			6.5	6.5	*	6.5	6.7		6.7	6.3	6.5	1.9	46
	2014			3.1	1.7		3.1	3.1		7.1	0.0	3.1	2.9	65

NUMBER TESTED IN GRADE 5													
2012			67	65	4	66	66		35	32	67	1,164	
2013			46	46	1	46	45		30	16	46	1,122	
2014			65	59		64	64		28	37	65	2,304	

AVERAGE PERCENTAGE OF ITEMS CORRECT BY REPORTING CATEGORY

Grade	Year	REPORTING CATEGORY			
		1. Matter and Energy	2. Force, Motion, and Energy	3. Earth and Space	4. Organisms and Environments
5	2012	68.3	67.0	63.1	63.0
	2013	64.4	64.3	65.2	70.3
	2014	59.6	56.3	50.9	63.0

PERCENTAGE SATISFACTORY (Levels 2 or 3)

Grade	Year	White	African Amer	Hispanic	Econ Disadv	Special Educ	LEP	At Risk	Migrant	Male	Female	All	District	Number Tested (All Students)
3	2012		28.6	*	33.3	40.0	*	33.3		44.4	*	40.0	54.7	10
	2013		71.4	*	66.7	60.0	*	62.5		42.9	*	60.0	67.5	10
	2014		*	*	*	*	*	*		*		*	63.3	3
4	2012		58.3	*	60.0	60.0	*	69.2		54.5	*	60.0	58.0	15
	2013		90.0	*	76.9	76.9	*	*		81.8	*	76.9	60.2	13
	2014		50.0	*	50.0	50.0	*	50.0		57.1	*	50.0	62.9	10
5	2012		53.8	66.7	57.9	60.0	66.7	64.7		60.0	60.0	60.0	67.0	20
	2013		93.3	*	89.5	89.5		92.3		91.7	85.7	89.5	86.5	19
	2014		100.0	*	100.0	100.0	*	100.0		100.0	*	100.0	86.3	17
3-5	2012		50.0	66.7	53.5	55.6	66.7	59.0		53.3	60.0	55.6	61.0	45
	2013		87.5	50.0	80.5	78.6	*	76.9		76.7	83.3	78.6	73.4	42
	2014		81.8	87.5	82.1	83.3	83.3	78.9		87.5	66.7	83.3	73.2	30

NUMBER TESTED IN GRADES 3-5													
2012		32	12	43	45	9	39		30	15	45	1,384	
2013		32	10	41	42	5	26		30	12	42	1,434	
2014		22	8	28	30	6	19		24	6	30	1,362	

PERCENTAGE SATISFACTORY (Levels 2 or 3)

Grade	Year	White	African Amer	Hispanic	Econ Disadv	Special Educ	LEP	At Risk	Migrant	Male	Female	All	District	Number Tested (All Students)
6	2012	*	68.8	100.0	78.3	78.3	100.0	83.3		77.8	*	78.3	65.5	23
	2013		55.0	*	50.0	50.0	*	62.5		50.0	50.0	50.0	55.9	24
	2014	*	59.1	*	50.0	50.0	*	50.0		52.6	44.4	50.0	51.6	28
7	2012		38.1	75.0	55.2	51.5	77.8	54.8		50.0	54.5	51.5	57.3	33
	2013	*	76.9	*	81.3	76.5	*	72.7		73.3	*	76.5	61.0	17
	2014		62.5	50.0	61.9	58.3	*	54.5		50.0	75.0	58.3	55.4	24
8	2012	*	63.2	*	65.2	64.0	*	68.2		68.4	50.0	64.0	58.0	25
	2013		75.0	75.0	75.0	75.0	85.7	74.1		75.0	75.0	75.0	74.5	28
	2014		62.5	*	72.7	66.7	*	66.7		60.0	*	66.7	75.0	12
6-8	2012	*	55.4	82.6	65.3	63.0	83.3	66.2		64.4	59.1	63.0	60.3	81
	2013	*	67.9	60.0	67.2	66.7	75.0	70.4		66.7	66.7	66.7	63.6	69
	2014	*	60.9	47.1	58.6	56.3	41.7	55.2		53.3	63.2	56.3	60.0	64

NUMBER TESTED IN GRADES 6-8													
2012	2	56	23	75	81	18	71			59	22	81	1,571
2013	1	53	15	64	69	12	54			51	18	69	1,687
2014	1	46	17	58	64	12	58			45	19	64	1,689

NUMBER UNSATISFACTORY (Level 1)

Grade	Year	White	African Amer	Hispanic	Econ Disadv	Special Educ	LEP	At Risk	Migrant	Male	Female	All	District	Number Tested (All Students)
3	2012		5	*	6	6	*	6		5	*	6	149	10
	2013		2	*	3	4	*	3		4	*	4	114	10
	2014		*	*	*	*	*	*		*		*	114	3
4	2012		5	*	6	6	*	4		5	*	6	201	15
	2013		1	*	3	3	*	*		2	*	3	184	13
	2014		4	*	5	5	*	4		3	*	5	170	10
5	2012		6	2	8	8	2	6		4	4	8	190	20
	2013		1	*	2	2		1		1	1	2	84	19
	2014		0	*	0	0	*	0		0	*	0	81	17
3-5	2012		16	4	20	20	3	16		14	6	20	540	45
	2013		4	5	8	9	*	6		7	2	9	382	42
	2014		4	1	5	5	1	4		3	2	5	365	30

NUMBER TESTED IN GRADES 3-5													
2012		32	12	43	45	9	39		30	15	45	1,384	
2013		32	10	41	42	5	26		30	12	42	1,434	
2014		22	8	28	30	6	19		24	6	30	1,362	

NUMBER UNSATISFACTORY (Level 1)

Grade	Year	White	African Amer	Hispanic	Econ Disadv	Special Educ	LEP	At Risk	Migrant	Male	Female	All	District	Number Tested (All Students)
6	2012	*	5	0	5	5	0	3		4	*	5	181	23
	2013		9	*	12	12	*	6		8	4	12	270	24
	2014	*	9	*	13	14	*	12		9	5	14	281	28
7	2012		13	3	13	16	2	14		11	5	16	244	33
	2013	*	3	*	3	4	*	3		4	*	4	202	17
	2014		6	4	8	10	*	10		8	2	10	266	24
8	2012	*	7	*	8	9	*	7		6	3	9	199	25
	2013		5	2	6	7	1	7		5	2	7	142	28
	2014		3	*	3	4	*	4		4	*	4	128	12
6-8	2012	*	25	4	26	30	3	24		21	9	30	624	81
	2013	*	17	6	21	23	3	16		17	6	23	614	69
	2014	*	18	9	24	28	7	26		21	7	28	675	64

NUMBER TESTED IN GRADES 6-8													
2012	2	56	23	75	81	18	71		59	22	81	1,571	
2013	1	53	15	64	69	12	54		51	18	69	1,687	
2014	1	46	17	58	64	12	58		45	19	64	1,689	

PERCENTAGE ADVANCED (Level 3)

Grade	Year	White	African Amer	Hispanic	Econ Disadv	Special Educ	LEP	At Risk	Migrant	Male	Female	All	District	Number Tested (All Students)
3	2012		14.3	*	22.2	20.0	*	22.2		22.2	*	20.0	3.3	10
	2013		0.0	*	0.0	0.0	*	0.0		0.0	*	0.0	4.3	10
	2014		*	*	*	*	*	*		*		*	4.8	3
4	2012		0.0	*	0.0	0.0	*	0.0		0.0	*	0.0	3.3	15
	2013		0.0	*	0.0	0.0	*	*		0.0	*	0.0	3.5	13
	2014		0.0	*	0.0	0.0	*	0.0		0.0	*	0.0	6.3	10
5	2012		0.0	0.0	0.0	0.0	0.0	0.0		0.0	0.0	0.0	4.9	20
	2013		6.7	*	5.3	5.3		0.0		8.3	0.0	5.3	7.4	19
	2014		15.4	*	11.8	11.8	*	10.0		7.1	*	11.8	10.3	17
3-5	2012		3.1	8.3	4.7	4.4	0.0	5.1		6.7	0.0	4.4	4.0	45
	2013		3.1	0.0	2.4	2.4	*	0.0		3.3	0.0	2.4	5.4	42
	2014		9.1	0.0	7.1	6.7	0.0	5.3		4.2	16.7	6.7	7.7	30

NUMBER TESTED IN GRADE 3-5													
2012		32	12	43	45	9	39		30	15	45	1,384	
2013		32	10	41	42	5	26		30	12	42	1,434	
2014		22	8	28	30	6	19		24	6	30	1,362	

PERCENTAGE ADVANCED (Level 3)

Grade	Year	White	African Amer	Hispanic	Econ Disadv	Special Educ	LEP	At Risk	Migrant	Male	Female	All	District	Number Tested (All Students)
6	2012	*	0.0	0.0	0.0	0.0	0.0	0.0		0.0	*	0.0	3.6	23
	2013		0.0	*	0.0	0.0	*	0.0		0.0	0.0	0.0	3.1	24
	2014	*	4.5	*	3.8	3.6	*	4.2		5.3	0.0	3.6	2.9	28
7	2012		0.0	0.0	0.0	0.0	0.0	0.0		0.0	0.0	0.0	1.0	33
	2013	*	0.0	*	0.0	0.0	*	0.0		0.0	*	0.0	3.5	17
	2014		0.0	0.0	0.0	0.0	*	0.0		0.0	0.0	0.0	3.9	24
8	2012	*	0.0	*	0.0	0.0	*	0.0		0.0	0.0	0.0	1.1	25
	2013		5.0	0.0	4.2	3.6	0.0	3.7		5.0	0.0	3.6	2.5	28
	2014		0.0	*	0.0	0.0	*	0.0		0.0	*	0.0	2.9	12
6-8	2012	*	0.0	0.0	0.0	0.0	0.0	0.0		0.0	0.0	0.0	1.9	81
	2013	*	1.9	0.0	1.6	1.4	0.0	1.9		2.0	0.0	1.4	3.0	69
	2014	*	2.2	0.0	1.7	1.6	0.0	1.7		2.2	0.0	1.6	3.3	64

NUMBER TESTED IN GRADE 6-8													
2012	2	56	23	75	81	18	71		59	22	81	1,571	
2013	1	53	15	64	69	12	54		51	18	69	1,687	
2014	1	46	17	58	64	12	58		45	19	64	1,689	

AVERAGE PERCENTAGE OF ITEMS CORRECT BY REPORTING CATEGORY

Grade	Year	REPORTING CATEGORY		
		1. Understanding Across Genres (GR 3-5) 1. Understanding/Analysis Across Genres (GR 6-8)	2. Understanding/Analysis of Literary Texts	3. Understanding/Analysis of Informational Texts
3	2012	50.0	51.4	49.2
	2013	26.0	56.4	52.3
	2014	*	*	*
4	2012	51.7	60.0	52.3
	2013	64.4	65.9	61.5
	2014	55.0	50.7	45.4
5	2012	51.3	47.3	44.6
	2013	58.6	61.1	50.8
	2014	58.8	65.9	58.4
3-5	2012	51.1	52.5	48.2
	2013	52.6	61.5	54.5
	2014	58.3	62.3	54.6

AVERAGE PERCENTAGE OF ITEMS CORRECT BY REPORTING CATEGORY

Grade	Year	REPORTING CATEGORY		
		1. Understanding Across Genres (GR 3-5) 1. Understanding/Analysis Across Genres (GR 6-8)	2. Understanding/Analysis of Literary Texts	3. Understanding/Analysis of Informational Texts
6	2012	49.5	67.7	48.1
	2013	40.6	47.7	48.5
	2014	52.2	51.3	47.4
7	2012	52.7	47.4	39.0
	2013	52.2	52.9	45.9
	2014	56.8	52.9	47.8
8	2012	54.0	51.3	48.5
	2013	70.1	60.7	55.4
	2014	74.0	60.2	47.4
6-8	2012	52.2	54.4	44.5
	2013	55.4	54.3	50.6
	2014	58.0	53.6	47.6

PERCENTAGE SATISFACTORY (Levels 2 and 3)

Test	Year	White	African Amer	Hispanic	Econ Disadv	Special Educ	LEP	At Risk	Migrant	Male	Female	All	District
ENGLISH I	2012												
	2013												
	2014	*	21.4	66.7	29.4	33.3	*	27.8		20.0	66.7	33.3	50.6
Tests Taken	2012												
	2013												
	2014	1	14	6	17	21	5	18		15	6	21	405
ENGLISH II	2012												
	2013												
	2014	*	50.0	42.9	50.0	43.8	*	46.7		50.0	*	43.8	65.3
Tests Taken	2012												
	2013												
	2014	1	8	7	12	16	5	15		14	2	16	340

NUMBER UNSATISFACTORY (Level 1)

Test	Year	White	African Amer	Hispanic	Econ Disadv	Special Educ	LEP	At Risk	Migrant	Male	Female	All	District
ENGLISH I	2012												
	2013												
	2014	*	11	2	12	14	*	13		12	2	14	200
Tests Taken	2012												
	2013												
	2014	1	14	6	17	21	5	18		15	6	21	405
ENGLISH II	2012												
	2013												
	2014	*	4	4	6	9	*	8		7	*	9	118
Tests Taken	2012												
	2013												
	2014	1	8	7	12	16	5	15		14	2	16	340

PERCENTAGE ADVANCED (Level 3)

Test	Year	White	African Amer	Hispanic	Econ Disadv	Special Educ	LEP	At Risk	Migrant	Male	Female	All	District
ENGLISH I	2012												
	2013												
	2014	*	0.0	0.0	0.0	0.0	*	0.0		0.0	0.0	0.0	3.5
Tests Taken	2012												
	2013												
	2014	1	14	6	17	21	5	18		15	6	21	405
ENGLISH II	2012												
	2013												
	2014	*	12.5	0.0	8.3	6.3	*	6.7		7.1	*	6.3	12.6
Tests Taken	2012												
	2013												
	2014	1	8	7	12	16	5	15		14	2	16	340

AVERAGE PERCENTAGE OF ITEMS CORRECT BY REPORTING CATEGORY

ENGLISH I	1. Understanding & Analysis Across Genres	2. Understanding & Analysis of Literary Texts	3. Understanding & Analysis of Informational Texts	4. Literary Composition ¹	5. Revision	6. Editing
2012						
2013						
2014	57.1	38.6	47.6	2.2	41.3	44.4

ENGLISH II	1. Understanding & Analysis Across Genres	2. Understanding & Analysis of Literary Texts	3. Understanding & Analysis of Informational Texts	4. Expository Composition ¹	5. Revision	6. Editing
2012						
2013						
2014	57.8	47.9	37.5	2.1	41.0	54.2

¹Average score points (range 0-6). A STAAR M composition is rated twice on a scale of 0 to 3, and the ratings are summed to determine score points for the composition. Score point scale: 0=Non-scorable; 2=Very Limited; 3=between Very Limited and Basic; 4=Basic; 5=between Basic and Satisfactory; 6=Satisfactory

PERCENTAGE SATISFACTORY (Levels 2 or 3)

Grade	Year	White	African Amer	Hispanic	Econ Disadv	Special Educ	LEP	At Risk	Migrant	Male	Female	All	District	Number Tested (All Students)
4	2012		50.0	*	50.0	50.0	*	58.3		45.5	*	50.0	57.5	14
	2013		60.0	*	61.5	61.5	*	*		54.5	*	61.5	48.9	13
	2014		42.9	*	33.3	33.3	*	28.6		28.6	*	33.3	47.7	9

NUMBER TESTED IN GRADE 4													
2012		12	2	14	14	1	12		11	3	14	475	
2013		10	3	13	13	3	5		11	2	13	452	
2014		7	2	9	9	2	7		7	2	9	449	

PERCENTAGE SATISFACTORY (Levels 2 or 3)

Grade	Year	White	African Amer	Hispanic	Econ Disadv	Special Educ	LEP	At Risk	Migrant	Male	Female	All	District	Number Tested (All Students)
7	2012		59.1	58.3	56.7	58.8	66.7	59.4		59.1	58.3	58.8	56.7	34
	2013	*	54.5	*	62.5	58.8	*	69.2		61.5	*	58.8	63.7	17
	2014		75.0	42.9	65.0	65.2	*	61.9		56.3	85.7	65.2	62.9	23

NUMBER TESTED IN GRADE 7													
2012		22	12	30	34	9	32		22	12	34	586	
2013	1	11	5	16	17	5	13		13	4	17	509	
2014		16	7	20	23	4	21		16	7	23	599	

NUMBER UNSATISFACTORY (Level 1)

Grade	Year	White	African Amer	Hispanic	Econ Disadv	Special Educ	LEP	At Risk	Migrant	Male	Female	All	District	Number Tested (All Students)
4	2012		6	*	7	7	*	5		6	*	7	202	14
	2013		4	*	5	5	*	*		5	*	5	231	13
	2014		4	*	6	6	*	5		5	*	6	235	9

NUMBER TESTED IN GRADE 4													
2012		12	2	14	14	1	12		11	3	14	475	
2013		10	3	13	13	3	5		11	2	13	452	
2014		7	2	9	9	2	7		7	2	9	449	

NUMBER UNSATISFACTORY (Level 1)

Grade	Year	White	African Amer	Hispanic	Econ Disadv	Special Educ	LEP	At Risk	Migrant	Male	Female	All	District	Number Tested (All Students)
7	2012		9	5	13	14	3	13		9	5	14	254	34
	2013	*	5	*	6	7	*	4		5	*	7	185	17
	2014		4	4	7	8	*	8		7	1	8	222	23

NUMBER TESTED IN GRADE 7													
2012		22	12	30	34	9	32		22	12	34	586	
2013	1	11	5	16	17	5	13		13	4	17	509	
2014		16	7	20	23	4	21		16	7	23	599	

PERCENTAGE ADVANCED (Level 3)

Grade	Year	White	African Amer	Hispanic	Econ Disadv	Special Educ	LEP	At Risk	Migrant	Male	Female	All	District	Number Tested (All Students)
4	2012		0.0	*	0.0	0.0	*	0.0		0.0	*	0.0	5.3	14
	2013		0.0	*	0.0	0.0	*	*		0.0	*	0.0	8.6	13
	2014		14.3	*	11.1	11.1	*	14.3		0.0	*	11.1	8.5	9

NUMBER TESTED IN GRADE 4													
2012		12	2	14	14	1	12		11	3	14	475	
2013		10	3	13	13	3	5		11	2	13	452	
2014		7	2	9	9	2	7		7	2	9	449	

PERCENTAGE ADVANCED (Level 3)

Grade	Year	White	African Amer	Hispanic	Econ Disadv	Special Educ	LEP	At Risk	Migrant	Male	Female	All	District	Number Tested (All Students)
7	2012		0.0	0.0	0.0	0.0	0.0	0.0		0.0	0.0	0.0	2.7	34
	2013	*	9.1	*	12.5	11.8	*	15.4		7.7	*	11.8	6.3	17
	2014		6.3	0.0	5.0	4.3	*	0.0		0.0	14.3	4.3	6.3	23

NUMBER TESTED IN GRADE 7													
2012		22	12	30	34	9	32		22	12	34	586	
2013	1	11	5	16	17	5	13		13	4	17	509	
2014		16	7	20	23	4	21		16	7	23	599	

AVERAGE PERCENTAGE OF ITEMS CORRECT BY REPORTING CATEGORY

Grade	Year	REPORTING CATEGORY		
		1. Composition ¹ GR 4: Personal Narrative GR 7: Expository	2. Revision	3. Editing
4	2012	1.1	44.9	44.8
	2013	2.3	52.7	53.8
	2014	1.8	46.0	48.1
7	2012	1.3	45.5	45.0
	2013	2.0	58.8	54.2
	2014	2.8	52.8	51.5

¹Average score points (range 0-6). A STAAR M composition is rated twice on a scale of 0 to 3, and the ratings are summed to determine score points for the composition. Score point scale: 0=Non-scorable; 2=Very Limited; 3=between Very Limited and Basic; 4=Basic; 5=between Basic and Satisfactory; 6=Satisfactory

PERCENTAGE SATISFACTORY (Levels 2 or 3)

Grade	Year	White	African Amer	Hispanic	Econ Disadv	Special Educ	LEP	At Risk	Migrant	Male	Female	All	District	Number Tested (All Students)
3	2012		50.0	*	42.9	50.0	*	42.9		42.9	*	50.0	52.0	8
	2013		37.5	*	60.0	54.5	*	55.6		75.0	*	54.5	64.4	11
	2014		*	*	*	*	*	*		*		*	64.2	4
4	2012		50.0	*	53.3	53.3	*	53.8		41.7	*	53.3	61.2	15
	2013		80.0	*	85.7	85.7	*	100.0		83.3	*	85.7	61.7	14
	2014		55.6	*	63.6	63.6	*	62.5		57.1	*	63.6	70.3	11
5	2012		66.7	*	50.0	52.9	*	46.2		44.4	62.5	52.9	60.6	17
	2013		93.3	*	80.0	80.0	*	85.7		80.0	*	80.0	77.2	20
	2014		76.9	*	82.4	82.4	*	88.9		78.6	*	82.4	79.1	17
3-5	2012		56.7	44.4	50.0	52.5	37.5	48.5		42.9	75.0	52.5	58.7	40
	2013		75.8	75.0	77.3	75.6	87.5	79.3		80.0	60.0	75.6	69.1	45
	2014		69.6	88.9	73.3	75.0	85.7	73.7		72.0	85.7	75.0	72.7	32

NUMBER TESTED IN GRADES 3-5													
2012		30	9	38	40	8	33		28	12	40	1,354	
2013		33	12	44	45	8	29		35	10	45	1,433	
2014		23	9	30	32	7	19		25	7	32	1,378	

PERCENTAGE SATISFACTORY (Levels 2 or 3)

Grade	Year	White	African Amer	Hispanic	Econ Disadv	Special Educ	LEP	At Risk	Migrant	Male	Female	All	District	Number Tested (All Students)
6	2012	*	47.1	*	52.2	52.2	*	66.7		44.4	*	52.2	46.2	23
	2013		65.0	*	58.3	58.3	*	68.8		56.3	62.5	58.3	54.3	24
	2014	*	45.5	*	46.2	46.4	*	47.8		40.0	62.5	46.4	52.0	28
7	2012		50.0	75.0	63.3	58.8	77.8	62.5		63.6	50.0	58.8	50.5	34
	2013	*	46.2	*	50.0	47.1	*	54.5		40.0	*	47.1	49.4	17
	2014		35.3	75.0	45.5	48.0	*	43.5		35.3	75.0	48.0	48.8	25
8	2012	*	55.6	*	52.4	56.5	*	50.0		58.8	50.0	56.5	46.2	23
	2013		63.2	100.0	73.9	75.0	100.0	76.9		75.0	75.0	75.0	71.4	28
	2014		42.9	*	63.6	63.6	*	63.6		66.7	*	63.6	71.0	11
6-8	2012	*	50.9	71.4	56.8	56.3	75.0	60.0		56.1	56.5	56.3	47.7	80
	2013	*	59.6	73.3	61.9	62.3	83.3	69.8		58.8	72.2	62.3	58.5	69
	2014	*	41.3	81.3	49.2	50.0	81.8	49.1		43.5	66.7	50.0	56.7	64

NUMBER TESTED IN GRADES 6-8													
2012	2	57	21	74	80	16	70			57	23	80	1,554
2013	1	52	15	63	69	12	53			51	18	69	1,659
2014	1	46	16	59	64	11	57			46	18	64	1,684

NUMBER UNSATISFACTORY (Level 1)

Grade	Year	White	African Amer	Hispanic	Econ Disadv	Special Educ	LEP	At Risk	Migrant	Male	Female	All	District	Number Tested (All Students)
3	2012		3	*	4	4	*	4		4	*	4	157	8
	2013		5	*	4	5	*	4		2	*	5	120	11
	2014		*	*	*	*	*	*		*		*	113	4
4	2012		6	*	7	7	*	6		7	*	7	182	15
	2013		2	*	2	2	*	0		2	*	2	181	14
	2014		4	*	4	4	*	3		3	*	4	138	11
5	2012		4	*	8	8	*	7		5	3	8	220	17
	2013		1	*	4	4	*	2		3	*	4	142	20
	2014		3	*	3	3	*	1		3	*	3	125	17
3-5	2012		13	5	19	19	5	17		16	3	19	559	40
	2013		8	3	10	11	1	6		7	4	11	443	45
	2014		7	1	8	8	1	5		7	1	8	376	32

NUMBER TESTED IN GRADES 3-5													
2012		30	9	38	40	8	33		28	12	40	1,354	
2013		33	12	44	45	8	29		35	10	45	1,433	
2014		23	9	30	32	7	19		25	7	32	1,378	

NUMBER UNSATISFACTORY (Level 1)

Grade	Year	White	African Amer	Hispanic	Econ Disadv	Special Educ	LEP	At Risk	Migrant	Male	Female	All	District	Number Tested (All Students)
6	2012	*	9	*	11	11	*	6		10	*	11	276	23
	2013		7	*	10	10	*	5		7	3	10	272	24
	2014	*	12	*	14	15	*	12		12	3	15	271	28
7	2012		11	3	11	14	2	12		8	6	14	276	34
	2013	*	7	*	8	9	*	5		9	*	9	257	17
	2014		11	2	12	13	*	13		11	2	13	310	25
8	2012	*	8	*	10	10	*	10		7	3	10	260	23
	2013		7	0	6	7	0	6		5	2	7	159	28
	2014		4	*	4	4	*	4		3	*	4	149	11
6-8	2012	*	28	6	32	35	4	28		25	10	35	812	80
	2013	*	21	4	24	26	2	16		21	5	26	688	69
	2014	*	27	3	30	32	2	29		26	6	32	730	64

NUMBER TESTED IN GRADES 6-8													
2012	2	57	21	74	80	16	70		57	23	80	1,554	
2013	1	52	15	63	69	12	53		51	18	69	1,659	
2014	1	46	16	59	64	11	57		46	18	64	1,684	

PERCENTAGE ADVANCED (Level 3)

Grade	Year	White	African Amer	Hispanic	Econ Disadv	Special Educ	LEP	At Risk	Migrant	Male	Female	All	District	Number Tested (All Students)
3	2012		0.0	*	0.0	0.0	*	0.0		0.0	*	0.0	4.0	8
	2013		0.0	*	0.0	0.0	*	0.0		0.0	*	0.0	7.4	11
	2014		*	*	*	*	*	*		*		*	7.6	4
4	2012		0.0	*	0.0	0.0	*	0.0		0.0	*	0.0	1.7	15
	2013		20.0	*	21.4	21.4	*	33.3		25.0	*	21.4	4.7	14
	2014		0.0	*	0.0	0.0	*	0.0		0.0	*	0.0	6.5	11
5	2012		0.0	*	0.0	0.0	*	0.0		0.0	0.0	0.0	0.7	17
	2013		0.0	*	0.0	0.0	*	0.0		0.0	*	0.0	3.9	20
	2014		7.7	*	11.8	11.8	*	11.1		7.1	*	11.8	6.0	17
3-5	2012		0.0	0.0	0.0	0.0	0.0	0.0		0.0	0.0	0.0	1.8	40
	2013		6.1	8.3	6.8	6.7	12.5	6.9		8.6	0.0	6.7	5.0	45
	2014		4.3	11.1	6.7	6.3	14.3	5.3		4.0	14.3	6.3	6.5	32

NUMBER TESTED IN GRADE 3-5													
2012		30	9	38	40	8	33		28	12	40	1,354	
2013		33	12	44	45	8	29		35	10	45	1,433	
2014		23	9	30	32	7	19		25	7	32	1,378	

PERCENTAGE ADVANCED (Level 3)

Grade	Year	White	African Amer	Hispanic	Econ Disadv	Special Educ	LEP	At Risk	Migrant	Male	Female	All	District	Number Tested (All Students)
6	2012	*	11.8	*	8.7	8.7	*	11.1		5.6	*	8.7	5.5	23
	2013		0.0	*	0.0	0.0	*	0.0		0.0	0.0	0.0	4.9	24
	2014	*	0.0	*	3.8	3.6	*	4.3		5.0	0.0	3.6	3.4	28
7	2012		0.0	0.0	0.0	0.0	0.0	0.0		0.0	0.0	0.0	1.1	34
	2013	*	0.0	*	0.0	0.0	*	0.0		0.0	*	0.0	3.0	17
	2014		0.0	0.0	0.0	0.0	*	0.0		0.0	0.0	0.0	2.3	25
8	2012	*	0.0	*	0.0	0.0	*	0.0		0.0	0.0	0.0	1.2	23
	2013		5.3	12.5	8.7	7.1	14.3	7.7		10.0	0.0	7.1	2.2	28
	2014		0.0	*	0.0	0.0	*	0.0		0.0	*	0.0	1.9	11
6-8	2012	*	3.5	0.0	2.7	2.5	0.0	2.9		1.8	4.3	2.5	2.6	80
	2013	*	1.9	6.7	3.2	2.9	8.3	3.8		3.9	0.0	2.9	3.4	69
	2014	*	0.0	6.3	1.7	1.6	9.1	1.8		2.2	0.0	1.6	2.6	64

NUMBER TESTED IN GRADE 6-8													
2012	2	57	21	74	80	16	70		57	23	80	1,554	
2013	1	52	15	63	69	12	53		51	18	69	1,659	
2014	1	46	16	59	64	11	57		46	18	64	1,684	

AVERAGE PERCENTAGE OF ITEMS CORRECT BY REPORTING CATEGORY

Grade	Year	REPORTING CATEGORY				
		1. Numbers, Operations, and Quantitative Reasoning	2. Patterns, Relationships, and Algebraic Reasoning	3. Geometry and Spatial Reasoning	4. Measurement	5. Probability and Statistics
3	2012	50.0	43.8	44.6	41.7	42.5
	2013	60.8	51.5	54.5	37.9	58.2
	2014	*	*	*	*	*
4	2012	46.7	45.3	36.7	44.4	36.7
	2013	69.8	62.9	52.1	65.5	69.6
	2014	60.8	69.1	37.3	42.4	52.3
5	2012	36.6	43.5	38.2	41.2	35.9
	2013	58.2	46.0	44.2	56.7	46.1
	2014	58.8	52.9	44.1	62.7	51.0
3-5	2012	43.0	44.3	38.9	42.5	37.5
	2013	62.5	52.6	49.2	54.8	56.4
	2014	59.9	60.7	44.7	54.2	53.8

AVERAGE PERCENTAGE OF ITEMS CORRECT BY REPORTING CATEGORY

Grade	Year	REPORTING CATEGORY				
		1. Numbers, Operations, and Quantitative Reasoning	2. Patterns, Relationships, and Algebraic Reasoning	3. Geometry and Spatial Reasoning	4. Measurement	5. Probability and Statistics
6	2012	48.8	37.8	42.8	32.6	47.8
	2013	45.5	38.3	52.8	39.6	55.6
	2014	46.7	41.8	47.0	33.9	54.8
7	2012	37.7	45.9	48.2	31.4	41.2
	2013	37.4	45.9	51.5	31.4	44.1
	2014	50.9	45.2	50.0	34.0	38.0
8	2012	41.7	45.1	44.9	36.5	32.6
	2013	48.6	51.9	42.3	53.9	55.8
	2014	44.5	57.9	48.5	42.7	52.3
6-8	2012	42.0	43.3	45.7	33.2	40.6
	2013	44.8	45.7	48.2	43.4	52.8
	2014	48.0	45.9	48.4	35.5	47.8

PERCENTAGE SATISFACTORY (Levels 2 and 3)

Test	Year	White	African Amer	Hispanic	Econ Disadv	Special Educ	LEP	At Risk	Migrant	Male	Female	All	District
ALGEBRA I	2012		25.0	*	30.0	27.3	*	27.3		16.7	*	27.3	32.5
	2013	*	7.7	*	17.6	15.8	*	14.3		13.3	*	15.8	36.9
	2014	*	33.3	*	46.7	41.2	*	46.7		50.0	*	41.2	46.1
Tests Taken	2012		8	3	10	11	2	11		6	5	11	280
	2013	1	13	5	17	19	4	14		15	4	19	339
	2014	1	12	4	15	17	4	15		12	5	17	360

NUMBER UNSATISFACTORY (Level 1)

Test	Year	White	African Amer	Hispanic	Econ Disadv	Special Educ	LEP	At Risk	Migrant	Male	Female	All	District
ALGEBRA I	2012		6	*	7	8	*	8		5	*	8	189
	2013	*	12	*	14	16	*	12		13	*	16	214
	2014	*	8	*	8	10	*	8		6	*	10	194
Tests Taken	2012		8	3	10	11	2	11		6	5	11	280
	2013	1	13	5	17	19	4	14		15	4	19	339
	2014	1	12	4	15	17	4	15		12	5	17	360

PERCENTAGE ADVANCED (Level 3)

Test	Year	White	African Amer	Hispanic	Econ Disadv	Special Educ	LEP	At Risk	Migrant	Male	Female	All	District
ALGEBRA I	2012		0.0	*	0.0	0.0	*	0.0		0.0	*	0.0	0.4
	2013	*	0.0	*	0.0	0.0	*	0.0		0.0	*	0.0	0.0
	2014	*	0.0	*	0.0	0.0	*	0.0		0.0	*	0.0	1.4
Tests Taken	2012		8	3	10	11	2	11		6	5	11	280
	2013	1	13	5	17	19	4	14		15	4	19	339
	2014	1	12	4	15	17	4	15		12	5	17	360

AVERAGE PERCENTAGE OF ITEMS CORRECT BY REPORTING CATEGORY

ALGEBRA I	1. Functional Relationships	2. Properties and Attributes of Functions	3. Linear Functions	4. Linear Equations and Inequalities	5. Quadratic and Other Nonlinear Functions
2012	43.9	34.5	37.9	33.0	33.8
2013	38.6	36.3	28.9	37.5	36.8
2014	42.2	45.9	39.7	42.6	48.7

PERCENTAGE SATISFACTORY (Levels 2 or 3)

Grade	Year	White	African Amer	Hispanic	Econ Disadv	Special Educ	LEP	At Risk	Migrant	Male	Female	All	District	Number Tested (All Students)
5	2012		45.5	*	26.7	31.3	*	28.6		25.0	37.5	31.3	48.8	16
	2013		66.7	*	64.7	64.7	*	61.5		72.7	50.0	64.7	58.1	17
	2014		*	*	42.9	42.9	*	*		*	*	42.9	55.5	7

NUMBER TESTED IN GRADE 5													
2012		11	4	15	16	4	14		8	8	16	531	
2013		15	2	17	17	1	13		11	6	17	540	
2014		5	2	7	7	1	4		5	2	7	501	

PERCENTAGE SATISFACTORY (Levels 2 or 3)

Grade	Year	White	African Amer	Hispanic	Econ Disadv	Special Educ	LEP	At Risk	Migrant	Male	Female	All	District	Number Tested (All Students)
8	2012		52.2	*	51.9	51.7	*	39.1		47.6	62.5	51.7	58.2	29
	2013		60.0	42.9	56.0	55.6	50.0	56.0		50.0	71.4	55.6	59.3	27
	2014		28.6	*	40.0	45.5	*	45.5		44.4	*	45.5	63.5	11

NUMBER TESTED IN GRADE 8													
2012		23	5	27	29	3	23		21	8	29	457	
2013		20	7	25	27	6	25		20	7	27	526	
2014		7	4	10	11	3	11		9	2	11	474	

NUMBER UNSATISFACTORY (Level 1)

Grade	Year	White	African Amer	Hispanic	Econ Disadv	Special Educ	LEP	At Risk	Migrant	Male	Female	All	District	Number Tested (All Students)
5	2012		6	*	11	11	*	10		6	5	11	272	16
	2013		5	*	6	6	*	5		3	3	6	226	17
	2014		*	*	4	4	*	*		*	*	4	223	7

NUMBER TESTED IN GRADE 5													
2012		11	4	15	16	4	14		8	8	16	531	
2013		15	2	17	17	1	13		11	6	17	540	
2014		5	2	7	7	1	4		5	2	7	501	

NUMBER UNSATISFACTORY (Level 1)

Grade	Year	White	African Amer	Hispanic	Econ Disadv	Special Educ	LEP	At Risk	Migrant	Male	Female	All	District	Number Tested (All Students)
8	2012		11	*	13	14	*	14		11	3	14	191	29
	2013		8	4	11	12	3	11		10	2	12	214	27
	2014		5	*	6	6	*	6		5	*	6	173	11

NUMBER TESTED IN GRADE 8													
2012		23	5	27	29	3	23		21	8	29	457	
2013		20	7	25	27	6	25		20	7	27	526	
2014		7	4	10	11	3	11		9	2	11	474	

PERCENTAGE ADVANCED (Level 3)

Grade	Year	White	African Amer	Hispanic	Econ Disadv	Special Educ	LEP	At Risk	Migrant	Male	Female	All	District	Number Tested (All Students)
5	2012		0.0	*	0.0	0.0	*	0.0		0.0	0.0	0.0	6.2	16
	2013		6.7	*	5.9	5.9	*	7.7		0.0	16.7	5.9	6.1	17
	2014		*	*	0.0	0.0	*	*		*	*	0.0	7.6	7

NUMBER TESTED IN GRADE 5													
2012		11	4	15	16	4	14		8	8	16	531	
2013		15	2	17	17	1	13		11	6	17	540	
2014		5	2	7	7	1	4		5	2	7	501	

PERCENTAGE ADVANCED (Level 3)

Grade	Year	White	African Amer	Hispanic	Econ Disadv	Special Educ	LEP	At Risk	Migrant	Male	Female	All	District	Number Tested (All Students)
8	2012	*	0.0	*	0.0	0.0	*	0.0		0.0	0.0	0.0	0.4	29
	2013		0.0	0.0	0.0	0.0	0.0	0.0		0.0	0.0	0.0	2.5	27
	2014		0.0	*	0.0	0.0	*	0.0		0.0	*	0.0	3.8	11

NUMBER TESTED IN GRADE 8													
2012	1	23	5	27	29	3	23		21	8	29	457	
2013		20	7	25	27	6	25		20	7	27	526	
2014		7	4	10	11	3	11		9	2	11	474	

AVERAGE PERCENTAGE OF ITEMS CORRECT BY REPORTING CATEGORY

Grade	Year	REPORTING CATEGORY			
		1. Matter and Energy	2. Force, Motion, and Energy	3. Earth and Space	4. Organisms and Environments
5	2012	53.1	44.5	46.3	44.9
	2013	57.8	74.3	60.0	68.4
	2014	59.5	64.3	67.1	66.2
8	2012	52.0	58.3	51.4	44.2
	2013	58.6	66.7	59.3	50.8
	2014	56.2	68.2	54.5	51.2

PERCENTAGE SATISFACTORY (Levels 2 and 3)

Test	Year	White	African Amer	Hispanic	Econ Disadv	Special Educ	LEP	At Risk	Migrant	Male	Female	All	District
BIOLOGY	2012	*	42.9	*	33.3	30.0	*	30.0		50.0	*	30.0	31.7
	2013	*	33.3	*	25.0	27.8	*	7.7		28.6	*	27.8	42.6
	2014	*	23.1	*	26.7	27.8	*	26.7		15.4	*	27.8	46.6
Tests Taken	2012	1	7	3	9	10	2	10		6	4	10	262
	2013	1	12	5	16	18	4	13		14	4	18	331
	2014	1	13	4	15	18	4	15		13	5	18	350

NUMBER UNSATISFACTORY (Level 1)

Test	Year	White	African Amer	Hispanic	Econ Disadv	Special Educ	LEP	At Risk	Migrant	Male	Female	All	District
BIOLOGY	2012	*	4	*	6	7	*	7		3	*	7	179
	2013	*	8	*	12	13	*	12		10	*	13	190
	2014	*	10	*	11	13	*	11		11	*	13	187
Tests Taken	2012	1	7	3	9	10	2	10		6	4	10	262
	2013	1	12	5	16	18	4	13		14	4	18	331
	2014	1	13	4	15	18	4	15		13	5	18	350

PERCENTAGE ADVANCED (Level 3)

Test	Year	White	African Amer	Hispanic	Econ Disadv	Special Educ	LEP	At Risk	Migrant	Male	Female	All	District
BIOLOGY	2012		0.0	*	0.0	0.0	*	0.0		0.0	*	0.0	0.0
	2013	*	0.0	*	0.0	0.0	*	0.0		0.0	*	0.0	0.0
	2014	*	0.0	*	0.0	0.0	*	0.0		0.0	*	0.0	1.1
Tests Taken	2012		7	3	9	10	2	10		6	4	10	262
	2013	1	12	5	16	18	4	13		14	4	18	331
	2014	1	13	4	15	18	4	15		13	5	18	350

AVERAGE PERCENTAGE OF ITEMS CORRECT BY REPORTING CATEGORY

BIOLOGY	1. Cell Structure and Function	2. Mechanisms of Genetics	3. Biological Evolution and Classification	4. Biological Processes and Systems	5. Interdependence within Environmental Systems
2012	44.4	40.0	43.8	43.3	37.8
2013	46.9	44.4	43.8	43.2	32.1
2014	43.8	47.9	44.4	42.0	35.8

PERCENTAGE SATISFACTORY (Levels 2 or 3)

Grade	Year	White	African Amer	Hispanic	Econ Disadv	Special Educ	LEP	At Risk	Migrant	Male	Female	All	District	Number Tested (All Students)
8	2012	*	60.9	*	63.0	65.5	*	65.2		71.4	50.0	65.5	52.3	29
	2013		30.0	85.7	44.0	44.4	83.3	48.0		45.0	42.9	44.4	59.5	27
	2014		28.6	*	50.0	45.5	*	45.5		44.4	*	45.5	59.3	11

NUMBER TESTED IN GRADE 8													
2012	1	23	5	27	29	3	23		21	8	29	451	
2013		20	7	25	27	6	25		20	7	27	516	
2014		7	4	10	11	3	11		9	2	11	479	

NUMBER UNSATISFACTORY (Level 1)

Grade	Year	White	African Amer	Hispanic	Econ Disadv	Special Educ	LEP	At Risk	Migrant	Male	Female	All	District	Number Tested (All Students)
8	2012	*	9	*	10	10	*	8		6	4	10	215	29
	2013		14	1	14	15	1	13		11	4	15	209	27
	2014		5	*	5	6	*	6		5	*	6	195	11

NUMBER TESTED IN GRADE8													
2012	1	23	5	27	29	3	23		21	8	29	451	
2013		20	7	25	27	6	25		20	7	27	516	
2014		7	4	10	11	3	11		9	2	11	479	

PERCENTAGE ADVANCED (Level 3)

Grade	Year	White	African Amer	Hispanic	Econ Disadv	Special Educ	LEP	At Risk	Migrant	Male	Female	All	District	Number Tested (All Students)
8	2012	*	0.0	*	0.0	0.0	*	0.0		0.0	0.0	0.0	2.9	29
	2013		0.0	0.0	0.0	0.0	0.0	0.0		0.0	0.0	0.0	1.9	27
	2014		0.0	*	0.0	0.0	*	0.0		0.0	*	0.0	3.5	11

NUMBER TESTED IN GRADE 8													
2012	1	23	5	27	29	3	23		21	8	29	451	
2013		20	7	25	27	6	25		20	7	27	516	
2014		7	4	10	11	3	11		9	2	11	479	

AVERAGE PERCENTAGE OF ITEMS CORRECT BY REPORTING CATEGORY

Grade	Year	REPORTING CATEGORY			
		1. History	2. Geography and Culture	3. Government and Citizenship	4. Economics, Science, Technology, and Society
8	2012	49.1	48.3	47.9	51.7
	2013	45.1	51.9	45.6	51.2
	2014	53.4	60.0	45.5	53.0

PERCENTAGE SATISFACTORY (Levels 2 and 3)

Test	Year	White	African Amer	Hispanic	Econ Disadv	Special Educ	LEP	At Risk	Migrant	Male	Female	All	District
U.S. HISTORY	2012												
	2013												
	2014		0.0	*	0.0	0.0	*	0.0		0.0	*	0.0	0.0
Tests Taken	2012												
	2013												
	2014		8	3	10	11	2	11		6	5	11	226

NUMBER UNSATISFACTORY (Level 1)

Test	Year	White	African Amer	Hispanic	Econ Disadv	Special Educ	LEP	At Risk	Migrant	Male	Female	All	District
U.S. HISTORY	2012												
	2013												
	2014		8	*	10	11	*	11		6	*	11	226
Tests Taken	2012												
	2013												
	2014		8	3	10	11	2	11		6	5	11	226

PERCENTAGE ADVANCED (Level 3)

Test	Year	White	African Amer	Hispanic	Econ Disadv	Special Educ	LEP	At Risk	Migrant	Male	Female	All	District
U.S. HISTORY	2012												
	2013												
	2014		0.0	*	0.0	0.0	*	0.0		0.0	*	0.0	0.0
Tests Taken	2012												
	2013												
	2014		8	3	10	11	2	11		6	5	11	226

AVERAGE PERCENTAGE OF ITEMS CORRECT BY REPORTING CATEGORY

U.S. HISTORY	1. History	2. Geography and Culture	3. Government and Citizenship	4. Economics, Science, Technology, and Society
2012				
2013				
2014	48.1	52.5	46.6	44.8

PERCENTAGE AT OR ABOVE THE 40th PERCENTILE on the ITBS

Grade	Year	READING TOTAL (**READING PROFILE TOTAL)				
		At Risk	Not At Risk	All	District	Number Tested (All Students)
K**	2012	50.0	61.9	61.1	62.2	288
	2013	58.3	56.6	56.7	60.8	263
	2014	47.6	54.4	53.8	60.7	247
1	2012	33.3	48.4	46.0	55.4	298
	2013	29.4	59.8	56.3	55.0	288
	2014	34.6	39.8	39.3	47.2	275
2	2012	30.2	71.8	45.8	49.8	275
	2013	31.6	64.8	46.4	50.2	274
	2014	27.0	57.5	41.5	44.4	282
K-2	2012	32.5	58.1	51.0	55.8	573
	2013	34.3	58.7	54.0	56.7	825
	2014	31.9	50.5	46.7	53.1	804
# Tested (GR K-2)	2012	240	621	861	21,034	
	2013	210	878	1,088	28,878	
	2014	216	835	1,051	28,063	

Grade	Year	MATHEMATICS TOTAL (**MATHEMATICS)				
		At Risk	Not At Risk	All	District	Number Tested (All Students)
K**	2012	47.1	55.1	52.4	55.1	412
	2013	49.3	59.5	56.0	55.1	393
	2014	47.3	55.4	52.6	55.0	380
1	2012	49.2	48.4	48.7	50.7	435
	2013	55.6	58.4	57.4	52.0	406
	2014	31.0	39.1	36.2	46.0	434
2	2012	47.4	80.0	55.0	57.9	447
	2013	50.0	75.8	57.8	56.2	412
	2014	43.0	60.0	48.7	52.0	398
K-2	2012	47.8	56.6	52.1	54.5	1,294
	2013	51.2	62.2	57.1	54.4	1,211
	2014	40.6	49.5	45.5	51.0	1,212
# Tested (GR K-2)	2012	667	627	1,294	40,477	
	2013	566	645	1,211	40,966	
	2014	552	660	1,212	40,233	

PERCENTAGE AT OR ABOVE THE 40th PERCENTILE

Grade	Year	White	African Amer	Hispanic	Econ Disadv	Special Educ	LEP	At Risk	Migrant	Male	Female	All	District	Number Tested (All Students)
K**	2012	*	62.6	56.6	62.5	42.9	57.1	50.0		60.3	62.0	61.1	62.2	288
	2013	71.4	57.3	51.8	56.6	*	50.0	58.3		52.9	60.8	56.7	60.8	263
	2014	*	51.6	61.1	53.6	57.1	36.4	47.6		52.1	55.5	53.8	60.7	247
1	2012	*	45.3	48.5	46.7	21.4	52.6	33.3		39.9	52.9	46.0	55.4	298
	2013	*	56.8	53.6	56.6	25.0	33.3	29.4		51.3	61.9	56.3	55.0	288
	2014	*	36.2	47.5	38.8	16.7	27.3	34.6		35.5	43.9	39.3	47.2	275
2	2012	*	45.2	48.1	45.7	16.7	43.8	30.2		39.6	53.2	45.8	49.8	275
	2013	*	46.2	44.1	46.4	12.5	28.6	31.6		43.9	49.2	46.4	50.2	274
	2014	*	41.3	41.0	40.4	15.4	33.3	27.0		40.7	42.4	41.5	44.4	282
1-2	2012	42.9	45.2	48.4	46.2	19.2	48.6	30.9		39.7	53.0	45.9	52.7	573
	2013	73.3	53.5	49.7	53.2	15.0	35.9	32.8		49.3	57.4	53.1	55.4	825
	2014	50.0	42.7	49.4	43.9	26.9	32.5	30.3		42.0	47.3	44.5	50.6	804
# Tested (GR K-2)	2012	7	442	122	558	26	35	220		307	266	573	14,095	
	2013	15	636	171	802	20	39	198		440	385	825	21,640	
	2014	8	616	176	758	26	40	195		421	383	804	21,214	

**Kindergarten subscore is Reading Profile Total; no Reading Total subscore available.

NUMBER AT OR ABOVE THE 80th PERCENTILE

Grade	Year	White	African Amer	Hispanic	Econ Disadv	Special Educ	LEP	At Risk	Migrant	Male	Female	All	District	Number Tested (All Students)
K**	2012	*	61	10	70	1	6	7		30	41	71	2,027	288
	2013	4	43	9	54	*	1	2		24	32	56	2,108	263
	2014	*	53	17	70	2	0	4		26	47	73	1,938	247
1	2012	*	47	11	58	1	3	3		28	31	59	1,963	298
	2013	*	59	12	70	1	1	2		31	40	71	2,017	288
	2014	*	33	8	38	0	2	4		19	25	44	1,561	275
2	2012	*	49	7	53	2	1	14		28	28	56	1,017	275
	2013	*	48	6	56	0	0	11		28	29	57	1,045	274
	2014	*	32	7	33	1	0	10		16	24	40	950	282
1-2	2012	1	96	18	111	3	4	17		56	59	115	2,981	573
	2013	7	150	27	180	1	2	15		83	101	184	5,171	825
	2014	4	118	32	141	3	2	18		61	96	157	4,449	804
# Tested (GR K-2)	2012	7	442	122	558	26	35	220		307	266	573	14,095	
	2013	15	636	171	802	20	39	198		440	385	825	21,640	
	2014	8	616	176	758	26	40	195		421	383	804	21,214	

**Kindergarten subscore is Reading Profile Total; no Reading Total subscore available.

PERCENTAGE AT OR ABOVE THE 40th PERCENTILE

Grade	Year	White	African Amer	Hispanic	Econ Disadv	Special Educ	LEP	At Risk	Migrant	Male	Female	All	District	Number Tested (All Students)
K**	2012	*	56.9	47.7	53.8	27.3	45.5	47.1		48.9	56.5	52.4	55.1	412
	2013	77.8	56.2	53.9	56.4	14.3	48.9	49.3		53.9	58.2	56.0	55.1	393
	2014	*	53.4	51.5	51.9	36.4	44.6	47.3		50.5	54.7	52.6	55.0	380
1	2012	*	42.1	55.8	49.1	5.9	55.8	49.2		48.8	48.7	48.7	50.7	435
	2013	*	57.4	57.6	57.5	40.0	59.2	55.6		57.8	56.9	57.4	52.0	406
	2014	*	36.8	33.8	36.2	16.7	30.5	31.0		34.2	38.3	36.2	46.0	434
2	2012	*	55.1	54.9	54.9	28.6	55.4	47.4		51.7	58.6	55.0	57.9	447
	2013	66.7	51.6	64.2	57.5	7.1	64.9	50.0		58.4	56.9	57.8	56.2	412
	2014	*	44.2	54.2	48.5	31.3	55.9	43.0		48.1	49.5	48.7	52.0	398
K-2	2012	36.4	51.5	53.1	52.6	19.0	52.7	47.8		49.8	54.7	52.1	54.5	1,294
	2013	66.7	55.1	58.8	57.1	19.4	57.9	51.2		56.8	57.3	57.1	54.4	1,211
	2014	60.0	44.5	46.0	45.2	28.2	43.5	40.6		43.8	47.2	45.5	51.0	1,212
# Tested (GR K-2)	2012	11	680	597	1,259	42	463	667		693	601	1,294	40,477	
	2013	18	646	541	1,185	31	404	566		653	558	1,211	40,966	
	2014	10	649	546	1,151	39	398	552		621	591	1,212	40,233	

**Kindergarten test is Mathematics; no Mathematics Total score available.

NUMBER AT OR ABOVE THE 80th PERCENTILE

Grade	Year	White	African Amer	Hispanic	Econ Disadv	Special Educ	LEP	At Risk	Migrant	Male	Female	All	District	Number Tested (All Students)
K**	2012	*	42	17	57	0	12	14		26	33	59	2,472	412
	2013	1	39	27	65	0	15	15		36	31	67	2,594	393
	2014	*	35	20	52	1	6	10		24	32	56	2,598	380
1	2012	*	32	29	59	0	20	21		33	28	61	2,473	435
	2013	*	46	36	82	0	25	26		46	37	83	2,609	406
	2014	*	18	12	28	0	4	5		16	15	31	2,166	434
2	2012	*	47	48	94	1	39	54		46	50	96	2,843	447
	2013	3	50	44	94	0	33	42		53	44	97	2,626	412
	2014	*	25	30	53	3	24	29		32	25	57	2,408	398
K-2	2012	0	121	94	210	1	71	89		105	111	216	7,788	1,294
	2013	5	135	107	241	0	73	83		135	112	247	7,829	1,211
	2014	2	78	62	133	4	34	44		72	72	144	7,172	1,212
# Tested (GR K-2)	2012	11	680	597	1,259	42	463	667		693	601	1,294	40,477	
	2013	18	646	541	1,185	31	404	566		653	558	1,211	40,966	
	2014	10	649	546	1,151	39	398	552		621	591	1,212	40,233	

**Kindergarten test is Mathematics; no Mathematics Total score available.

PERCENTAGE AT OR ABOVE THE 40th PERCENTILE

Grade	Year	White	African Amer	Hispanic	Econ Disadv	Special Educ	LEP	At Risk	Migrant	Male	Female	All	District	Number Tested (All Students)
1	2012	*	51.8	62.7	57.3	23.5	64.3	58.0		56.8	57.7	57.2	62.5	437
	2013	*	66.1	61.2	63.8	70.0	58.4	57.6		61.5	66.5	63.8	63.6	406
	2014	*	43.7	53.5	48.9	25.0	51.8	51.3		47.1	50.5	48.7	58.6	435
2	2012	*	57.9	57.7	57.3	14.3	58.9	51.0		52.6	62.5	57.4	63.6	448
	2013	83.3	51.2	68.4	59.5	14.3	70.9	54.5		62.8	55.8	59.7	60.6	412
	2014	*	44.7	59.4	51.8	33.3	64.0	47.5		49.8	53.2	51.4	59.2	401
1-2	2012	37.5	54.9	60.1	57.3	19.4	61.4	53.5		54.7	60.2	57.3	63.0	885
	2013	66.7	58.9	65.0	61.6	37.5	65.2	55.6		62.1	61.2	61.7	62.1	818
	2014	66.7	44.2	56.3	50.3	29.6	57.8	48.9		48.4	51.8	50.0	58.9	836
# Tested (GR 1-2)	2012	8	450	424	866	31	332	531		475	410	885	26,880	
	2013	9	443	363	800	24	273	432		449	369	818	27,003	
	2014	6	446	378	795	27	277	421		436	400	836	26,955	

NUMBER AT OR ABOVE THE 80th PERCENTILE

Grade	Year	White	African Amer	Hispanic	Econ Disadv	Special Educ	LEP	At Risk	Migrant	Male	Female	All	District	Number Tested (All Students)
1	2012	*	41	57	100	1	43	44		55	46	101	4,060	437
	2013	*	68	41	107	2	29	31		66	44	110	4,150	406
	2014	*	39	34	72	2	27	31		40	38	78	3,708	435
2	2012	*	52	64	115	1	54	71		55	61	116	3,820	448
	2013	4	55	68	124	0	54	68		71	56	127	3,436	412
	2014	*	35	45	79	2	36	47		41	41	82	3,288	401
1-2	2012	2	93	121	215	2	97	115		110	107	217	7,880	885
	2013	5	123	109	231	2	83	99		137	100	237	7,586	818
	2014	3	74	79	151	4	63	78		81	79	160	6,996	836
# Tested (GR 1-2)	2012	8	450	424	866	31	332	531		475	410	885	26,880	
	2013	9	443	363	800	24	273	432		449	369	818	27,003	
	2014	6	446	378	795	27	277	421		436	400	836	26,955	

PERCENTAGE AT OR ABOVE THE 40th PERCENTILE

Grade	Year	White	African Amer	Hispanic	Econ Disadv	Special Educ	LEP	At Risk	Migrant	Male	Female	All	District	Number Tested (All Students)
K	2012			89.1	88.9	*	88.8	88.8		86.2	92.7	89.2	89.9	120
	2013	*		86.7	87.8	*	87.6	86.9		80.3	93.7	87.1	89.7	124
	2014			82.0	82.1	*	81.7	81.7		82.1	81.8	82.0	88.6	111
1	2012	*		89.0	88.9	*	88.9	89.0		86.6	92.7	89.1	89.2	137
	2013			93.7	94.6	*	93.7	93.7		90.0	98.1	93.8	87.6	112
	2014	*		76.8	78.1	0.0	76.8	76.8		68.6	86.0	77.2	84.6	101
2	2012			94.4	94.3	*	94.3	94.3		92.2	96.4	94.4	93.3	161
	2013	*		96.3	96.3	*	96.3	96.3		96.3	96.3	96.3	93.6	135
	2014			94.9	95.7	*	95.7	95.7		91.5	98.3	95.0	91.8	119
K-2	2012	*		91.1	91.0	55.6	91.0	91.0		88.4	94.3	91.1	90.8	418
	2013	*		92.3	92.9	62.5	92.6	92.4		89.6	95.9	92.5	90.3	371
	2014	*		85.1	85.9	27.3	85.2	85.2		81.3	89.1	85.2	88.2	331
# Tested (GR K-2)	2012	1		415	411	9	409	411		224	194	418	18,911	
	2013	3		365	368	8	366	367		202	169	371	18,629	
	2014	1		328	319	11	325	325		166	165	331	18,008	

NUMBER AT OR ABOVE THE 80th PERCENTILE

Grade	Year	White	African Amer	Hispanic	Econ Disadv	Special Educ	LEP	At Risk	Migrant	Male	Female	All	District	Number Tested (All Students)
K	2012			57	57	*	54	53		28	29	57	3,679	120
	2013	*		62	66	*	64	64		26	40	66	3,798	124
	2014			34	32	*	33	33		17	17	34	3,313	111
1	2012	*		57	55	*	55	56		35	22	57	2,437	137
	2013			45	45	*	44	44		20	25	45	2,394	112
	2014	*		22	23	0	22	22		7	16	23	2,123	101
2	2012			76	75	*	75	75		31	46	77	2,934	161
	2013	*		69	68	*	68	68		42	27	69	2,899	135
	2014			51	50	*	50	50		20	31	51	2,596	119
K-2	2012	*		190	187	2	184	184		94	97	191	9,050	418
	2013	*		176	179	1	176	176		88	92	180	9,091	371
	2014	*		107	105	0	105	105		44	64	108	8,032	331
# Tested (GR K-2)	2012	1		415	411	9	409	411		224	194	418	18,911	
	2013	3		365	368	8	366	367		202	169	371	18,629	
	2014	1		328	319	11	325	325		166	165	331	18,008	

PERCENTAGE DEMONSTRATING IMPROVEMENT

Grade	Level 1 in 2013		Level 2 in 2013		Level 3 in 2013		Levels 1-3 in 2013	
	Number Tested Both Years	Percentage Improved in 2014	Number Tested Both Years	Percentage Improved in 2014	Number Tested Both Years	Percentage Improved in 2014	Number Tested Both Years	Percentage Improved in 2014
5	2	*	0		0		2	*
6	2	*	7	100.0	0		9	88.9
7	3	*	2	*	0		5	*
8	1	*	1	*	0		2	*
9	1	*	0		0		1	*
10	2	*	1	*	0		3	*
11	1	*	2	*	0		3	*
12	1	*	0		0		1	*
ALL	13	53.8	13	84.6	0		26	69.2

PERFORMANCE IN 2014

Grade 2013-14 (N Rated)	Domain:	Listening		Speaking		Writing		Reading		Composite	
	2014 Level	N	%	N	%	N	%	N	%	N	%
KN (116)	Beginning	94	81.0	98	84.5	108	93.1	102	87.9	102	87.9
	Intermediate	18	15.5	14	12.1	6	5.2	13	11.2	13	11.2
	Advanced	4	3.4	4	3.4	2	1.7	1	0.9	1	0.9
	Advanced High	0	0.0	0	0.0	0	0.0	0	0.0	0	0.0
1 (136)	Beginning	30	22.1	51	37.5	70	51.5	71	52.2	63	46.3
	Intermediate	69	50.7	55	40.4	49	36.0	43	31.6	51	37.5
	Advanced	27	19.9	21	15.4	11	8.1	16	11.8	16	11.8
	Advanced High	10	7.4	9	6.6	6	4.4	6	4.4	6	4.4
2 (136)	Beginning	12	8.9	29	21.5	43	31.9	45	33.1	32	23.7
	Intermediate	55	40.7	57	42.2	57	42.2	49	36.0	61	45.2
	Advanced	49	36.3	25	18.5	24	17.8	28	20.6	24	17.8
	Advanced High	19	14.1	24	17.8	11	8.1	14	10.3	18	13.3
3 (149)	Beginning	13	8.8	22	15.0	56	38.1	42	28.2	32	21.8
	Intermediate	52	35.4	71	48.3	51	34.7	48	32.2	57	38.8
	Advanced	59	40.1	34	23.1	28	19.0	41	27.5	41	27.9
	Advanced High	23	15.6	20	13.6	12	8.2	18	12.1	17	11.6
4 (170)	Beginning	6	3.6	9	5.4	16	9.6	43	25.3	13	7.8
	Intermediate	40	24.1	53	31.9	61	36.7	62	36.5	65	39.2
	Advanced	60	36.1	63	38.0	70	42.2	47	27.6	66	39.8
	Advanced High	60	36.1	41	24.7	19	11.4	18	10.6	22	13.3

**PROGRESSION FROM
2013 TO 2014**

Number Rated Both Years N (%) Progressed	2014 Level	2013 Level			
		Beg	Int	Adv	Adv High
-	Beginning	-			
	Intermediate	-	-		
	Advanced	-	-	-	
	Advanced High	-	-	-	
130 63 (48.5%)	Beginning	60			
	Intermediate	44	6		
	Advanced	13	0	1	
	Advanced High	6	0	0	
126 76 (60.3%)	Beginning	29			
	Intermediate	40	18		
	Advanced	10	10	3	
	Advanced High	7	5	4	
136 28 (20.6%)	Beginning	27			
	Intermediate	4	51		
	Advanced	0	8	30	
	Advanced High	0	0	16	
158 40 (25.3%)	Beginning	10			
	Intermediate	12	50		
	Advanced	0	6	58	
	Advanced High	0	0	22	

PERFORMANCE IN 2014

Grade 2013-14 (N Rated)	Domain:	Listening		Speaking		Writing		Reading		Composite	
	2014 Level	N	%	N	%	N	%	N	%	N	%
5 (140)	Beginning	8	5.8	8	5.8	8	5.8	14	10.1	8	5.8
	Intermediate	13	9.4	18	12.9	31	22.3	39	28.1	25	18.1
	Advanced	41	29.5	48	34.5	48	34.5	48	34.5	55	39.9
	Advanced High	77	55.4	65	46.8	52	37.4	38	27.3	50	36.2
6 (73)	Beginning	4	5.5	4	5.5	3	4.2	13	18.1	2	2.8
	Intermediate	18	24.7	20	27.4	19	26.8	25	34.7	27	38.0
	Advanced	31	42.5	30	41.1	31	43.7	23	31.9	23	32.4
	Advanced High	20	27.4	19	26.0	18	25.4	11	15.3	19	26.8
7 (58)	Beginning	2	3.4	2	3.4	2	3.5	7	12.1	2	3.5
	Intermediate	24	41.4	24	41.4	25	43.9	23	39.7	19	33.3
	Advanced	27	46.6	27	46.6	26	45.6	19	32.8	28	49.1
	Advanced High	5	8.6	5	8.6	4	7.0	9	15.5	8	14.0
8 (70)	Beginning	1	1.4	1	1.4	1	1.4	2	2.9	1	1.5
	Intermediate	19	27.1	19	27.1	19	27.1	18	26.5	9	13.2
	Advanced	20	28.6	20	28.6	20	28.6	25	36.8	29	42.6
	Advanced High	30	42.9	30	42.9	30	42.9	23	33.8	29	42.6
9 (40)	Beginning	2	5.9	1	2.9	1	2.9	9	23.1	2	6.1
	Intermediate	12	35.3	9	26.5	12	35.3	10	25.6	11	33.3
	Advanced	8	23.5	12	35.3	12	35.3	14	35.9	12	36.4
	Advanced High	12	35.3	12	35.3	9	26.5	6	15.4	8	24.2

**PROGRESSION FROM
2013 TO 2014**

Number Rated Both Years N (%) Progressed	2014 Level	2013 Level			
		Beg	Int	Adv	Adv High
132 67 (50.8%)	Beginning	5			
	Intermediate	5	19		
	Advanced	0	13	41	
	Advanced High	0	1	48	
65 21 (32.3%)	Beginning	1			
	Intermediate	2	23		
	Advanced	0	2	20	
	Advanced High	0	0	17	
54 11 (20.4%)	Beginning	2			
	Intermediate	2	16		
	Advanced	0	1	25	
	Advanced High	0	0	8	
64 27 (42.2%)	Beginning	0			
	Intermediate	0	9		
	Advanced	0	0	28	
	Advanced High	0	0	27	
26 6 (23.1%)	Beginning	1			
	Intermediate	0	10		
	Advanced	0	0	9	
	Advanced High	0	0	6	

PERFORMANCE IN 2014

Grade 2013-14 (N Rated)	Domain:	Listening		Speaking		Writing		Reading		Composite	
	2014 Level	N	%	N	%	N	%	N	%	N	%
10 (33)	Beginning	0	0.0	0	0.0	0	0.0	3	9.4	0	0.0
	Intermediate	2	6.7	3	10.0	16	55.2	7	21.9	8	28.6
	Advanced	10	33.3	9	30.0	11	37.9	20	62.5	19	67.9
	Advanced High	18	60.0	18	60.0	2	6.9	2	6.3	1	3.6
11 (21)	Beginning	0	0.0	0	0.0	0	0.0	2	10.0	0	0.0
	Intermediate	2	10.0	4	20.0	7	35.0	2	10.0	1	5.3
	Advanced	9	45.0	7	35.0	11	55.0	14	70.0	16	84.2
	Advanced High	9	45.0	9	45.0	2	10.0	2	10.0	2	10.5
12 (8)	Beginning	0	0.0	0	0.0	0	0.0	2	25.0	0	0.0
	Intermediate	0	0.0	0	0.0	0	0.0	4	50.0	1	14.3
	Advanced	1	14.3	1	14.3	3	42.9	2	25.0	4	57.1
	Advanced High	6	85.7	6	85.7	4	57.1	0	0.0	2	28.6
ALL (1,150)	Beginning	172	15.2	225	19.9	308	27.3	355	31.1	257	22.9
	Intermediate	324	28.6	347	30.7	353	31.3	343	30.0	348	31.0
	Advanced	346	30.6	301	26.6	297	26.4	298	26.1	334	29.8
	Advanced High	289	25.6	258	22.8	169	15.0	147	12.9	182	16.2

**PROGRESSION FROM
2013 TO 2014**

Number Rated Both Years N (%) Progressed	2014 Level	2013 Level			
		Beg	Int	Adv	Adv High
23 1 (4.3%)	Beginning	0			
	Intermediate	0	5		
	Advanced	0	0	17	
	Advanced High	0	0	1	
16 3 (18.8%)	Beginning	0			
	Intermediate	0	1		
	Advanced	0	2	12	
	Advanced High	0	0	1	
5 2 (40.0%)	Beginning	0			
	Intermediate	0	0		
	Advanced	0	0	3	
	Advanced High	0	0	2	
935 345 (36.9%)	Beginning	135			
	Intermediate	109	208		
	Advanced	23	42	247	
	Advanced High	13	6	152	

■ Indicates students who progressed at least one level from 2013 to 2014.