

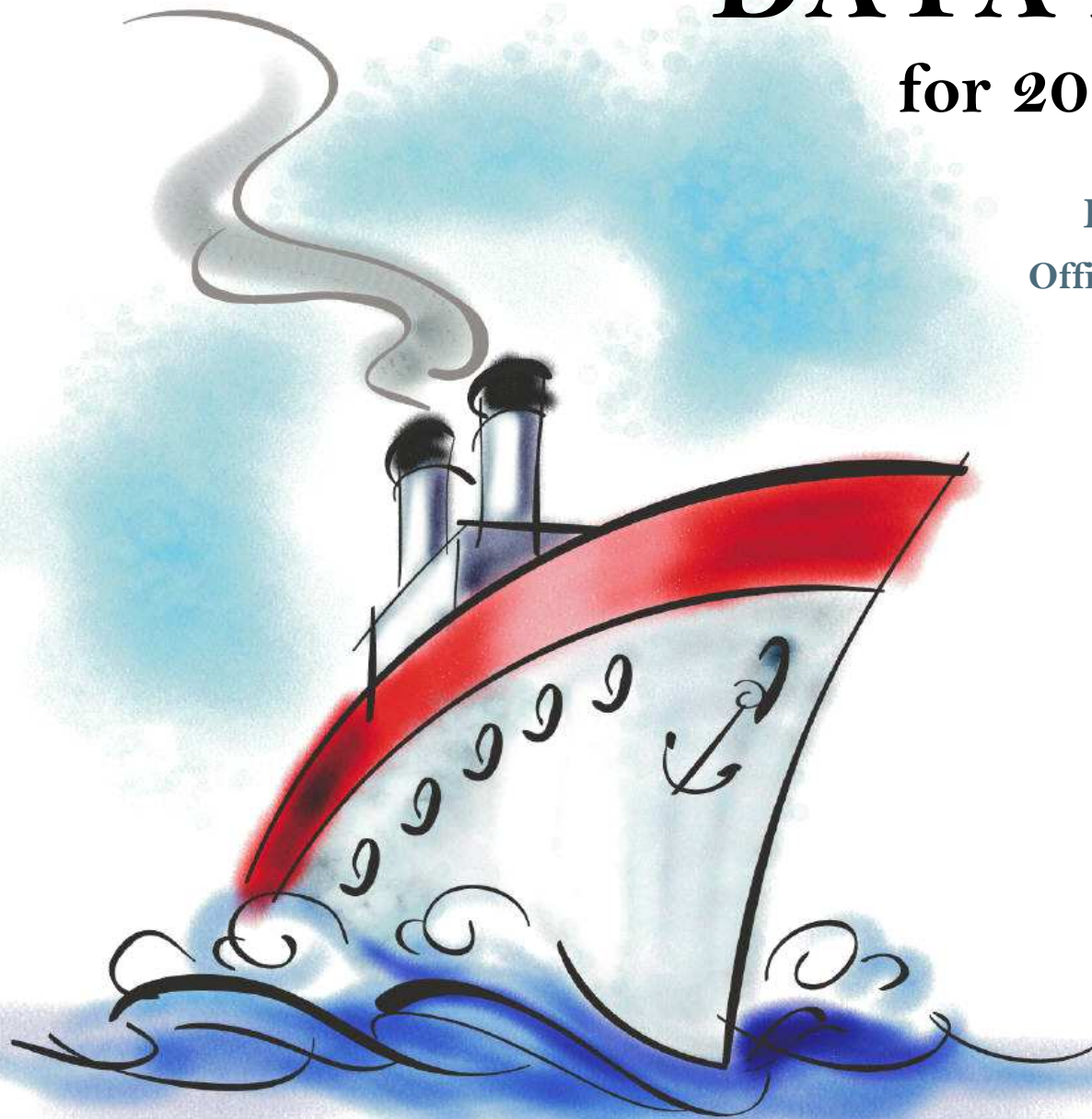
# DATA PACKET

for 2014-15 planning

Evaluation & Assessment  
Office of Institutional Research  
<http://mydata.dallasisd.org>  
[OIR@dallasisd.org](mailto:OIR@dallasisd.org)

September 8, 2014

**LINCOLN  
FEEDER GROUP**



**Dallas Independent School District**

2. Contents ..... Table of Contents

**STUDENTS AND STAFF**

- 5. Summary ..... Summary of Student and Teacher Statistics
- 9. Enroll (2) ..... Enrollment Statistics by Select Student Group
- 15. Teachers ..... Teacher Statistics

**STAAR (English)**

- 16. Reading (3-8) .... STAAR 3-8 Reading in English
- 28. Writing (3-8) ..... STAAR 3-8 Writing in English
- 43. Math (EOC) ..... STAAR EOC Mathematics
- 54. Science (EOC) ... STAAR EOC Science

**STAAR (Spanish)**

- 62. Reading (3-8) .... STAAR 3-8 Reading in Spanish

**STAAR M**

- 70. Reading (3-8) .... STAAR M 3-8 Reading
- 82. Writing (3-8) ..... STAAR M 3-8 Writing
- 97. Math (EOC) ..... STAAR M EOC Mathematics
- 108. Science (EOC) ... STAAR M EOC Science

**ITBS/LOGRAMOS**

- 116. Compliance ..... SCE Compliance for At-Risk Students
- 119. Math ..... ITBS Mathematics Subtests

**ENGLISH PROFICIENCY**

- 125. WMLS ..... Woodcock-Muñoz Language Survey

3. Notes ..... Notes and Data Descriptions

- 6. Enroll (1) ..... Enrollment Statistics by Ethnicity
- 12. Attendance ..... Student Attendance Statistics

- 24. Reading (EOC) .. STAAR EOC Reading
- 35. Math (3-8) ..... STAAR 3-8 Mathematics in English
- 47. Science (3-8) ..... STAAR 3-8 Science in English
- 58. SS (EOC) ..... STAAR EOC Social Studies

66. Writing (3-8) ..... STAAR 3-8 Writing in Spanish

- 78. Reading (EOC) .. STAAR M EOC Reading
- 89. Math (3-8) ..... STAAR M 3-8 Mathematics
- 101. Science (3-8) ..... STAAR M 3-8 Science
- 112. SS (EOC) ..... STAAR M EOC Social Studies

- 117. Reading ..... ITBS Reading Subtests
- 123. Reading ..... Logramos Reading Subtests

126. TELPAS ..... Texas English Language Proficiency Assessment System

## **2013-14 SCHOOL SUMMARY**

- Student percentages are computed as the percentage of total student enrollment.
- Additional statistics are available in ENROLLMENT and TEACHER reports.
- Race/ethnic categories are based on the newest federal standards for ethnicity and race reporting, though some categories have been combined because of small group sizes. Students reporting their ethnicity as “Hispanic” are not counted in any race category.
- “Economically disadvantaged” students are those who qualify for free or reduced-price lunch through the federal government's program.
- Teacher demographics and assignments are from the district's Public Education Information Management System (PEIMS) submission to the TEA.

## **ENROLLMENT**

- Statistics are based on the school's enrollment at the end of the fifth six-weeks grading period.
- “Economically disadvantaged” students are those receiving free or reduced-price lunches.
- “New” students were new to the district in 2013-14. They are counted as new if not enrolled in a district campus before the last day of the 2012-13 school year.
- The “retention rate” is the percentage of students in the same grade at the end of the fifth six-weeks grading period for both 2012-13 and 2013-14.

## **ATTENDANCE**

- Statistics are based on student attendance through the end of the sixth six-weeks grading period (the end of the school year).
- “Average daily membership” is the total number of school days students were ENROLLED divided by the number of school days in the year.
- The “average daily attendance” number (N) is the total number of school days students were IN ATTENDANCE divided by the number of school days in the year. The “average daily attendance” percentage (%) is the average attendance rate. For each student, the number of days attended is divided by the number of days enrolled. This rate is then averaged across students.
- The number (N) of “yearly transactions” is the total number of transfer and withdrawal transactions in the school year. The percentage (%) is the number of transactions divided by “average daily membership,” which gives (on average) the percentage of the membership associated with a transaction.
- “Continuously enrolled” students are enrolled and in attendance for a minimum number of instructional days in at least one course at the school between the beginning of the school year and the first day of the main STAAR testing period. The minimum number varies depending on the school year's calendar, but is typically around 130 days.
- The “stability rate” is the number of continuously enrolled students divided by “average daily membership.”

## **TEACHERS**

- Teacher demographics and assignments are from the district's Public Education Information Management System (PEIMS) submission to the TEA.
- Teacher absences counted towards the average DO NOT include vacation days (coded as VAC in personnel database).
- Retention rate for a school year is computed with numerator “# of teachers assigned to the school both that year and the year prior” and denominator “# of teachers assigned to the school for the prior year.” That is, the retention rate is the percentage of the prior year's teachers who continued at the school.

### **STAAR, STAAR L, and STAAR M**

- Cells marked with an asterisk (\*) indicate five or fewer students were tested. Blank cells indicate no students were tested.
- Student group assignments are from the district's Public Education Information Management System (PEIMS) submission to the TEA.
- STAAR statistics are based on results from standard STAAR only. STAAR L and STAAR M statistics are computed separately, following TEA reporting practice.
- “Percentage Satisfactory” is the percentage of students achieving Level 2 (Satisfactory) or Level 3 (Advanced).
- Statistics by reporting category are averages for all students (across student groups and genders).
- An “average percentage correct” is computed as follows: for each student, divide the number of items correctly answered by the total number of items in the test section, then average the resulting percentages across all students. For short answers on EOC English tests, an “average rating” is presented; STAAR EOC short answers are rated on a scale of 0 to 3. For written compositions on writing tests, “average score points” is presented. Additional details provided in report footnotes.
- Reading and mathematics statistics for SSI grades 5 and 8 are based on scores cumulative through the second administration. EOC statistics are based on first administration scores from the fall and spring administrations.
- Beginning in 2014, EOC Reading and EOC Writing tests were replaced with EOC English tests.

### **SCE COMPLIANCE and ITBS / ITED / LOGRAMOS**

- Cells marked with an asterisk (\*) indicate five or fewer students were tested. Blank cells indicate no students were tested.
- Student group assignments are based on demographic data in the Dallas ISD student database.
- Kindergarten ITBS reading statistics are based on the Reading Profile Total summary score. All other grades' ITBS reading statistics, and Logramos reading statistics for all grades, are based on the Reading Total summary score. (Reading Total values not available with use of the ITBS form administered in kindergarten.) “Number tested” statistics include kindergarten.
- Kindergarten ITBS mathematics statistics are based on the Mathematics subtest score. All other grades' statistics are based on the Mathematics Total summary score. (Mathematics Total values not available with use of the ITBS form administered in kindergarten.) “Number tested” statistics include kindergarten.
- Mathematics Total summary scores are combinations of the Mathematics Concepts, Problems, and Computation subtest results. For schools that did not administer Mathematics Concepts or Mathematics Problems subtests, Mathematics Computation statistics are provided separately.

### **TELPAS**

- Students are counted as having tested if any one of the four domains is rated. Because a TELPAS composite rating is not assigned to a student unless all four domains are rated, the number of TELPAS composite ratings may be smaller than the number tested.
- If a student's composite rating did not increase at least one level from 2013 to 2014, the TEA did not report the 2013 composite rating.
- If a student is rated as advanced high in 2014, the TEA does not differentiate between the advanced and advanced high levels from 2013.

**STUDENT ENROLLMENT**

Grade	Enrollment
PK	189
KN	187
1	181
2	210
3	179
4	166
5	167
9	132
10	118
11	124
12	148
ALL	1,801

**STUDENT AND TEACHER RACE/ETHNICITY**

Ethnicity/Race	Students		Teachers	
	Number	Percent	Number	Percent
Black/African American	1,415	78.6	96	78.0
American Indian/Alaska Native	8	0.4	*	*
Asian/Hawaiian/Pacific Islander	1	0.1	*	*
Hispanic	372	20.7	12	9.8
White	1	0.1	15	12.2
Multiple	3	0.2	0	0.0
Other* (teachers only)	—	—	0	0.0
Not reported (students only)	0	0.0	—	—

\*For teachers, "Other" category includes American Indian/Alaska Native and Asian/Hawaiian/Pacific Islander.

**SELECT STUDENT GROUP ENROLLMENT**

Group	Number	Percent
At-Risk	1,057	58.7
Economically disadvantaged	1,636	90.8
Limited English proficient (LEP)	265	14.7
Special education	151	8.4
Talented and Gifted (TAG)	169	9.4

Grade	Year	Enrollment	African American		American Indian		Asian		Hispanic		White		Multiple category	
			N	%	N	%	N	%	N	%	N	%	N	%
PK	2012	263	159	60.5	1	0.4	0	0.0	101	38.4	2	0.8	0	0.0
	2013	273	149	54.6	0	0.0	0	0.0	120	44.0	2	0.7	0	0.0
	2014	189	156	82.5	0	0.0	0	0.0	32	16.9	0	0.0	1	0.5
KN	2012	323	158	48.9	0	0.0	0	0.0	163	50.5	1	0.3	1	0.3
	2013	304	143	47.0	1	0.3	1	0.3	156	51.3	3	1.0	0	0.0
	2014	187	148	79.1	0	0.0	0	0.0	39	20.9	0	0.0	0	0.0
1	2012	312	149	47.8	1	0.3	0	0.0	160	51.3	1	0.3	1	0.3
	2013	323	147	45.5	0	0.0	0	0.0	174	53.9	2	0.6	0	0.0
	2014	181	137	75.7	1	0.6	1	0.6	42	23.2	0	0.0	0	0.0
2	2012	272	129	47.4	0	0.0	0	0.0	143	52.6	0	0.0	0	0.0
	2013	291	138	47.4	0	0.0	0	0.0	151	51.9	1	0.3	0	0.0
	2014	210	161	76.7	0	0.0	0	0.0	49	23.3	0	0.0	0	0.0
3	2012	256	120	46.9	0	0.0	0	0.0	136	53.1	0	0.0	0	0.0
	2013	274	122	44.5	0	0.0	0	0.0	151	55.1	0	0.0	1	0.4
	2014	179	130	72.6	0	0.0	0	0.0	49	27.4	0	0.0	0	0.0
4	2012	251	122	48.6	0	0.0	0	0.0	126	50.2	3	1.2	0	0.0
	2013	260	124	47.7	0	0.0	0	0.0	135	51.9	1	0.4	0	0.0
	2014	166	129	77.7	1	0.6	0	0.0	34	20.5	1	0.6	1	0.6
5	2012	249	127	51.0	0	0.0	0	0.0	120	48.2	2	0.8	0	0.0
	2013	241	115	47.7	0	0.0	0	0.0	125	51.9	1	0.4	0	0.0
	2014	167	124	74.3	0	0.0	0	0.0	42	25.1	0	0.0	1	0.6
PK-5	2012	1,926	964	50.1	2	0.1	0	0.0	949	49.3	9	0.5	2	0.1
	2013	1,966	938	47.7	1	0.1	1	0.1	1,012	51.5	10	0.5	1	0.1
	2014	1,279	985	77.0	2	0.2	1	0.1	287	22.4	1	0.1	3	0.2

Grade	Year	Enrollment	African American		American Indian		Asian		Hispanic		White		Multiple category	
			N	%	N	%	N	%	N	%	N	%	N	%
9	2012	188	151	80.3	1	0.5	0	0.0	35	18.6	0	0.0	0	0.0
	2013	150	113	75.3	1	0.7	0	0.0	36	24.0	0	0.0	0	0.0
	2014	132	108	81.8	0	0.0	0	0.0	23	17.4	0	0.0	0	0.0
10	2012	160	130	81.3	3	1.9	0	0.0	27	16.9	0	0.0	0	0.0
	2013	164	134	81.7	1	0.6	0	0.0	28	17.1	0	0.0	0	0.0
	2014	118	95	80.5	2	1.7	0	0.0	21	17.8	0	0.0	0	0.0
11	2012	161	140	87.0	2	1.2	0	0.0	19	11.8	0	0.0	0	0.0
	2013	166	134	80.7	3	1.8	0	0.0	29	17.5	0	0.0	0	0.0
	2014	124	105	84.7	1	0.8	0	0.0	18	14.5	0	0.0	0	0.0
12	2012	165	143	86.7	5	3.0	0	0.0	16	9.7	0	0.0	1	0.6
	2013	183	159	86.9	1	0.5	0	0.0	23	12.6	0	0.0	0	0.0
	2014	148	122	82.4	3	2.0	0	0.0	23	15.5	0	0.0	0	0.0
9-12	2012	674	564	83.7	11	1.6	0	0.0	97	14.4	0	0.0	1	0.1
	2013	663	540	81.4	6	0.9	0	0.0	116	17.5	0	0.0	0	0.0
	2014	522	430	82.4	6	1.1	0	0.0	85	16.3	0	0.0	0	0.0
ALL	2012	2,991	1,736	58.0	15	0.5	0	0.0	1,224	40.9	10	0.3	5	0.2
	2013	3,036	1,692	55.7	7	0.2	1	0.0	1,321	43.5	10	0.3	1	0.0
	2014	1,801	1,415	78.6	8	0.4	1	0.1	372	20.7	1	0.1	3	0.2

Grade	Year	Enrollment	Economically Disadvantaged		LEP		Special Education		At Risk		TAG		New (to District)		Gender		Retention Rate (%)
			N	%	N	%	N	%	N	%	N	%	N	%	% Male	% Female	
PK	2012	263	238	90.5	80	30.4	5	1.9	87	33.1	0	0.0	239	90.9	49.8	50.2	9.5
	2013	273	245	89.7	97	35.5	1	0.4	98	35.9	0	0.0	234	85.7	53.1	46.9	13.6
	2014	189	167	88.4	25	13.2	1	0.5	28	14.8	0	0.0	149	78.8	52.9	47.1	20.6
KN	2012	323	316	97.8	120	37.2	7	2.2	142	44.0	4	1.2	134	41.5	54.2	45.8	0.0
	2013	304	290	95.4	104	34.2	7	2.3	122	40.1	9	3.0	109	35.9	51.0	49.0	1.0
	2014	187	173	92.5	28	15.0	1	0.5	34	18.2	11	5.9	65	34.8	52.9	47.1	0.5
1	2012	312	305	97.8	127	40.7	19	6.1	145	46.5	10	3.2	25	8.0	54.8	45.2	4.8
	2013	323	313	96.9	137	42.4	13	4.0	153	47.4	26	8.0	20	6.2	54.5	45.5	4.0
	2014	181	174	96.1	30	16.6	6	3.3	48	26.5	20	11.0	21	11.6	56.4	43.6	3.3
2	2012	272	262	96.3	105	38.6	16	5.9	186	68.4	35	12.9	18	6.6	52.2	47.8	2.6
	2013	291	280	96.2	119	40.9	23	7.9	182	62.5	23	7.9	14	4.8	56.0	44.0	3.8
	2014	210	203	96.7	39	18.6	12	5.7	101	48.1	20	9.5	14	6.7	54.3	45.7	2.9
3	2012	256	251	98.0	109	42.6	17	6.6	208	81.3	30	11.7	24	9.4	56.3	43.8	2.0
	2013	274	269	98.2	109	39.8	27	9.9	216	78.8	34	12.4	19	6.9	49.3	50.7	1.8
	2014	179	167	93.3	38	21.2	9	5.0	129	72.1	19	10.6	15	8.4	58.7	41.3	2.2
4	2012	251	245	97.6	96	38.2	35	13.9	189	75.3	30	12.0	27	10.8	54.2	45.8	1.2
	2013	260	254	97.7	114	43.8	27	10.4	213	81.9	31	11.9	14	5.4	56.9	43.1	0.4
	2014	166	156	94.0	25	15.1	22	13.3	124	74.7	24	14.5	13	7.8	52.4	47.6	1.8
5	2012	249	241	96.8	86	34.5	39	15.7	155	62.2	53	21.3	26	10.4	56.6	43.4	1.6
	2013	241	231	95.9	101	41.9	31	12.9	176	73.0	36	14.9	11	4.6	53.1	46.9	0.0
	2014	167	162	97.0	37	22.2	14	8.4	146	87.4	25	15.0	8	4.8	55.7	44.3	3.6
PK-5	2012	1,926	1,858	96.5	723	37.5	138	7.2	1,112	57.7	162	8.4	493	25.6	54.0	46.0	3.1
	2013	1,966	1,882	95.7	781	39.7	129	6.6	1,160	59.0	159	8.1	421	21.4	53.4	46.6	3.6
	2014	1,279	1,202	94.0	222	17.4	65	5.1	610	47.7	119	9.3	285	22.3	54.7	45.3	5.1



Grade	Year	Enrollment	Economically Disadvantaged		LEP		Special Education		At Risk		TAG		New (to District)		Gender		Retention Rate (%)
			N	%	N	%	N	%	N	%	N	%	N	%	% Male	% Female	
9	2012	188	171	91.0	18	9.6	30	16.0	142	75.5	20	10.6	23	12.2	54.3	45.7	10.6
	2013	150	135	90.0	24	16.0	29	19.3	116	77.3	9	6.0	21	14.0	56.0	44.0	6.7
	2014	132	114	86.4	15	11.4	23	17.4	110	83.3	14	10.6	16	12.1	46.2	53.8	5.3
10	2012	160	139	86.9	6	3.8	28	17.5	117	73.1	20	12.5	16	10.0	44.4	55.6	3.1
	2013	164	149	90.9	13	7.9	23	14.0	124	75.6	21	12.8	5	3.0	47.6	52.4	4.3
	2014	118	103	87.3	13	11.0	19	16.1	107	90.7	10	8.5	6	5.1	55.9	44.1	1.7
11	2012	161	145	90.1	8	5.0	25	15.5	127	78.9	25	15.5	9	5.6	47.8	52.2	1.9
	2013	166	139	83.7	8	4.8	28	16.9	137	82.5	15	9.0	9	5.4	48.2	51.8	4.2
	2014	124	98	79.0	9	7.3	14	11.3	108	87.1	16	12.9	7	5.6	38.7	61.3	1.6
12	2012	165	140	84.8	9	5.5	28	17.0	134	81.2	28	17.0	8	4.8	41.2	58.8	12.1
	2013	183	144	78.7	7	3.8	30	16.4	158	86.3	23	12.6	5	2.7	46.4	53.6	14.8
	2014	148	119	80.4	6	4.1	30	20.3	122	82.4	10	6.8	5	3.4	45.3	54.7	5.4
9-12	2012	674	595	88.3	41	6.1	111	16.5	520	77.2	93	13.8	56	8.3	47.2	52.8	7.1
	2013	663	567	85.5	52	7.8	110	16.6	535	80.7	68	10.3	40	6.0	49.3	50.7	7.7
	2014	522	434	83.1	43	8.2	86	16.5	447	85.6	50	9.6	34	6.5	46.4	53.6	3.6
ALL	2012	2,991	2,822	94.3	879	29.4	334	11.2	1,898	63.5	294	9.8	592	19.8	52.4	47.6	3.7
	2013	3,036	2,830	93.2	968	31.9	327	10.8	1,981	65.3	277	9.1	493	16.2	52.5	47.5	4.2
	2014	1,801	1,636	90.8	265	14.7	151	8.4	1,057	58.7	169	9.4	319	17.7	52.3	47.7	4.7

Grade	Year	Average Daily Membership		Average Daily Attendance				Yearly Transactions			Continuously Enrolled		Stability Rate	
		N	District	N	%	District N	District %	N	%	District %	N	District	%	District
KN	2012	322	13,633	309	96.1	13,086	96.0	77	23.9	19.9	279	11,731	86.8	86.0
	2013	304	14,067	291	95.8	13,411	95.3	63	20.7	20.0	268	12,178	88.2	86.6
	2014	186	13,618	180	96.5	13,058	95.9	56	30.1	19.8	150	11,271	80.5	82.8
1	2012	313	14,026	302	96.4	13,533	96.5	71	22.7	18.3	278	12,292	88.8	87.6
	2013	328	14,140	317	96.4	13,578	96.0	69	21.0	18.7	288	12,528	87.7	88.6
	2014	174	14,262	168	96.8	13,732	96.3	63	36.2	19.2	133	12,149	76.4	85.2
2	2012	270	13,338	261	96.8	12,932	97.0	57	21.1	16.8	235	11,883	87.1	89.1
	2013	292	13,555	283	96.9	13,077	96.5	45	15.4	17.1	267	12,206	91.4	90.0
	2014	203	13,652	196	96.7	13,209	96.8	47	23.1	17.0	167	11,868	82.2	86.9
3	2012	259	12,874	252	97.2	12,508	97.2	61	23.6	15.5	230	11,592	88.8	90.0
	2013	273	12,879	265	97.0	12,466	96.8	50	18.3	15.9	245	11,710	89.7	90.9
	2014	181	13,159	176	97.1	12,763	97.0	48	26.5	17.3	141	11,491	77.8	87.3
4	2012	248	12,493	241	97.2	12,139	97.2	59	23.8	16.6	221	11,218	89.1	89.8
	2013	259	12,406	252	97.2	12,029	97.0	48	18.5	16.5	235	11,339	90.7	91.4
	2014	156	12,543	150	96.6	12,180	97.1	37	23.8	16.3	128	11,075	82.3	88.3
5	2012	245	12,562	238	97.1	12,220	97.3	23	9.4	5.3	218	11,364	88.9	90.5
	2013	239	12,053	232	97.1	11,696	97.0	11	4.6	6.2	222	11,075	92.8	91.9
	2014	165	12,130	161	97.7	11,795	97.2	9	5.5	5.4	136	10,790	82.4	89.0
KN-5	2012	1,657	78,926	1,603	96.8	76,419	96.8	348	21.0	15.5	1,461	70,080	88.2	88.8
	2013	1,696	79,100	1,640	96.7	76,255	96.4	286	16.9	16.0	1,525	71,036	89.9	89.8
	2014	1,065	79,365	1,032	96.9	76,736	96.7	260	24.4	16.0	855	68,644	80.3	86.5

Grade	Year	Average Daily Membership		Average Daily Attendance				Yearly Transactions			Continuously Enrolled		Stability Rate	
		N	District	N	%	District N	District %	N	%	District %	N	District	%	District
9	2012	195	10,922	179	91.8	10,196	93.3	70	35.8	27.8	145	8,726	74.2	79.9
	2013	156	11,153	138	88.6	10,499	94.1	51	32.7	28.3	103	9,388	66.1	84.2
	2014	134	10,850	124	92.6	10,242	94.4	42	31.3	28.4	105	9,091	78.2	83.8
10	2012	159	9,007	148	92.7	8,431	93.6	42	26.3	20.6	123	7,332	77.2	81.4
	2013	169	9,331	149	88.2	8,812	94.4	33	19.5	20.5	119	8,042	70.3	86.2
	2014	121	9,898	114	94.3	9,367	94.6	28	23.2	20.3	96	8,628	79.5	87.2
11	2012	163	8,913	150	92.0	8,306	93.2	38	23.2	15.9	122	7,319	74.6	82.1
	2013	173	8,457	157	90.5	7,949	94.0	27	15.6	18.9	124	7,295	71.7	86.3
	2014	127	8,467	119	94.0	8,005	94.5	24	18.9	18.1	107	7,476	84.4	88.3
12	2012	170	8,178	155	91.0	7,571	92.6	28	16.4	12.6	127	6,742	74.6	82.4
	2013	177	8,199	158	89.6	7,661	93.4	33	18.7	14.9	113	7,269	64.0	88.7
	2014	147	7,886	137	93.2	7,407	93.9	23	15.6	15.2	110	7,027	74.8	89.1
9-12	2012	688	37,021	632	91.8	34,504	93.2	178	25.9	19.8	517	30,119	75.1	81.4
	2013	675	37,140	602	89.3	34,922	94.0	144	21.3	21.2	459	31,994	68.0	86.1
	2014	529	37,101	494	93.5	35,021	94.4	117	22.1	21.1	418	32,222	79.0	86.8

Teachers: 123

**DISTRIBUTIONS**

Ethnicity/Race	Number	Percentage
African American	96	78.0
Hispanic	12	9.8
White	15	12.2
Multiple	0	0.0
Other	0	0.0

Gender	Number	Percentage
Female	93	75.6
Male	30	24.4

**ATTENDANCE / RETENTION**

	Average Absences	Retention Rate
2011-12	6.8	—
2012-13	8.0	67.7
2013-14	7.2	54.3

**YEARS EXPERIENCE**

Years	Number	Percentage
Beginning (0)	10	8.1
1	9	7.3
2	7	5.7
3	2	1.6
4	7	5.7
5	1	0.8
1-3	18	14.6
More than 3	95	77.2
1 - 5	26	21.1
6 - 10	17	13.8
11 - 20	32	26.0
More than 20	38	30.9

**PERCENTAGE SATISFACTORY (Levels 2 or 3)**

Grade	Year	White	African Amer	Hispanic	Econ Disadv	Special Educ	LEP	At Risk	Migrant	Male	Female	All	District	Number Tested (All Students)
3	2012		78.0	35.4	64.8	*	33.3	50.0		61.2	72.1	65.7	63.6	166
	2013		76.1	80.5	77.2	*	*	64.9		75.7	78.8	77.4	67.8	155
	2014		61.4	34.4	57.9	66.7	20.0	41.0		52.7	60.3	56.0	61.7	159
4	2012	*	60.7	63.6	62.4	21.4	46.7	37.0		56.6	68.0	62.0	64.3	158
	2013	*	63.2	33.3	57.2	50.0	23.1	25.8		51.1	65.6	57.0	62.3	151
	2014	*	59.8	60.0	58.9	*	*	41.2	*	53.4	66.1	60.0	59.4	120
5	2012	*	77.9	63.6	73.8	20.0	40.0	42.4		72.3	75.0	73.5	68.0	170
	2013	*	95.1	88.2	92.9	*	76.9	82.4		88.6	98.5	93.5	81.5	138
	2014		93.0	92.9	92.7	*	88.9	90.5		90.3	96.5	93.0	78.5	129
3-5	2012	*	72.3	54.4	67.1	20.6	39.0	44.4		63.6	71.7	67.2	65.5	494
	2013	*	77.4	68.5	75.0	55.6	56.7	60.6		70.0	81.3	75.5	71.1	444
	2014	*	71.3	53.6	69.5	55.6	45.2	58.7	*	65.2	73.3	68.9	66.7	408

NUMBER TESTED IN GRADES 3-5													
2012	4	343	147	468	34	59	205			275	219	494	22,173
2013	2	332	108	420	9	30	142			230	214	444	21,619
2014	1	348	56	380	9	31	235	1		221	187	408	21,304

**PERCENTAGE SATISFACTORY (Levels 2 or 3)**

Grade	Year	White	African Amer	Hispanic	Econ Disadv	Special Educ	LEP	At Risk	Migrant	Male	Female	All	District	Number Tested (All Students)
6	2012		63.2	44.9	53.4	*	39.5	41.4		48.1	60.4	54.2	63.5	107
	2013		50.9	46.8	47.3	20.0	35.6	30.2		57.4	36.5	48.3	57.7	120
	2014												63.1	0
7	2012		61.4	56.6	57.7	*	42.4	46.7		53.7	63.2	58.6	67.5	111
	2013		74.5	63.8	68.3	*	55.9	54.8		63.3	75.4	70.0	67.3	110
	2014												60.5	0
8	2012	*	80.8	79.1	80.0	*	77.3	71.0		70.9	88.9	79.0	71.3	100
	2013		80.0	70.6	74.0	*	64.5	67.6		67.9	82.8	75.4	82.7	114
	2014												81.5	0
6-8	2012	*	68.1	59.3	63.0	25.0	49.5	52.8		57.7	69.7	63.5	67.4	318
	2013		68.6	59.4	62.5	35.7	50.0	51.8		62.4	66.1	64.2	68.6	344
	2014												68.2	0

NUMBER TESTED IN GRADES 6-8													
2012	1	166	145	297	8	93	195			163	155	318	29,211
2013		172	160	312	14	110	199			173	171	344	29,692
2014													30,015

**NUMBER UNSATISFACTORY (Level 1)**

Grade	Year	White	African Amer	Hispanic	Econ Disadv	Special Educ	LEP	At Risk	Migrant	Male	Female	All	District	Number Tested (All Students)
3	2012		26	31	56	*	16	46		38	19	57	2,466	166
	2013		27	8	34	*	*	27		17	18	35	2,181	155
	2014		49	21	61	2	16	59		43	27	70	2,649	159
4	2012	*	44	16	56	11	8	34		36	24	60	2,529	158
	2013	*	43	22	62	3	10	23		44	21	65	2,581	151
	2014	*	43	4	46	*	*	30	*	27	21	48	2,858	120
5	2012	*	25	20	42	12	12	34		26	19	45	2,665	170
	2013	*	5	4	9	*	3	6		8	1	9	1,484	138
	2014		8	1	9	*	1	8		7	2	9	1,582	129
3-5	2012	*	95	67	154	27	36	114		100	62	162	7,660	494
	2013	*	75	34	105	4	13	56		69	40	109	6,246	444
	2014	*	100	26	116	4	17	97	*	77	50	127	7,089	408

NUMBER TESTED IN GRADES 3-5													
2012	4	343	147	468	34	59	205		275	219	494	22,173	
2013	2	332	108	420	9	30	142		230	214	444	21,619	
2014	1	348	56	380	9	31	235	1	221	187	408	21,304	

**NUMBER UNSATISFACTORY (Level 1)**

Grade	Year	White	African Amer	Hispanic	Econ Disadv	Special Educ	LEP	At Risk	Migrant	Male	Female	All	District	Number Tested (All Students)
6	2012		21	27	48	*	23	34		28	21	49	3,673	107
	2013		28	33	59	8	29	44		29	33	62	4,523	120
	2014												3,679	0
7	2012		22	23	44	*	19	40		25	21	46	3,070	111
	2013		14	17	33	*	15	28		18	15	33	3,215	110
	2014												4,075	0
8	2012	*	10	9	18	*	5	18		16	5	21	2,786	100
	2013		12	15	25	*	11	24		18	10	28	1,586	114
	2014												1,797	0
6-8	2012	*	53	59	110	6	47	92		69	47	116	9,529	318
	2013		54	65	117	9	55	96		65	58	123	9,324	344
	2014												9,551	0

NUMBER TESTED IN GRADES 6-8													
2012	1	166	145	297	8	93	195			163	155	318	29,211
2013		172	160	312	14	110	199			173	171	344	29,692
2014													30,015



PERCENTAGE ADVANCED (Level 3)

Grade	Year	White	African Amer	Hispanic	Econ Disadv	Special Educ	LEP	At Risk	Migrant	Male	Female	All	District	Number Tested (All Students)
3	2012		11.9	4.2	10.1	*	0.0	3.3		8.2	11.8	9.6	12.6	166
	2013		14.2	14.6	14.1	*	*	2.6		10.0	17.6	14.2	13.6	155
	2014		10.2	3.1	9.0	0.0	0.0	8.0		9.9	7.4	8.8	9.6	159
4	2012	*	3.6	9.1	5.4	0.0	6.7	1.9		6.0	4.0	5.1	11.2	158
	2013	*	7.7	9.1	7.6	0.0	7.7	3.2		4.4	13.1	7.9	13.5	151
	2014	*	12.1	20.0	12.5	*	*	5.9	*	6.9	19.4	13.3	12.0	120
5	2012	*	17.7	9.1	15.0	0.0	0.0	1.7		9.6	21.1	14.7	11.1	170
	2013	*	10.8	5.9	7.9	*	0.0	0.0		5.7	13.2	9.4	13.3	138
	2014		13.2	14.3	13.8	*	22.2	6.0		11.1	15.8	13.2	11.5	129
3-5	2012	*	11.1	7.5	10.3	0.0	1.7	2.4		8.0	12.3	9.9	11.6	494
	2013	*	10.8	10.2	10.0	0.0	3.3	2.1		6.5	15.0	10.6	13.5	444
	2014	*	11.8	8.9	11.6	0.0	6.5	6.8	*	9.5	13.9	11.5	11.1	408

NUMBER TESTED IN GRADE 3-5													
2012	4	343	147	468	34	59	205		275	219	494	22,173	
2013	2	332	108	420	9	30	142		230	214	444	21,619	
2014	1	348	56	380	9	31	235	1	221	187	408	21,304	

PERCENTAGE ADVANCED (Level 3)

Grade	Year	White	African Amer	Hispanic	Econ Disadv	Special Educ	LEP	At Risk	Migrant	Male	Female	All	District	Number Tested (All Students)
6	2012		3.5	2.0	2.9	*	0.0	1.7		3.7	1.9	2.8	8.3	107
	2013		3.5	8.1	4.5	0.0	4.4	3.2		8.8	1.9	5.8	11.3	120
	2014												7.1	0
7	2012		7.0	1.9	4.8	*	3.0	2.7		7.4	1.8	4.5	10.3	111
	2013		3.6	6.4	5.8	*	5.9	6.5		4.1	6.6	5.5	8.7	110
	2014												10.0	0
8	2012	*	5.8	7.0	4.4	*	0.0	1.6		3.6	8.9	6.0	9.9	100
	2013		0.0	7.8	4.2	*	9.7	4.1		1.8	5.2	3.5	15.5	114
	2014												13.1	0
6-8	2012	*	5.4	3.4	4.0	0.0	1.1	2.1		4.9	3.9	4.4	9.5	318
	2013		2.3	7.5	4.8	0.0	6.4	4.5		5.2	4.7	4.9	11.7	344
	2014												10.1	0

NUMBER TESTED IN GRADE 6-8													
2012	1	166	145	297	8	93	195			163	155	318	29,211
2013		172	160	312	14	110	199			173	171	344	29,692
2014													30,015

**AVERAGE PERCENTAGE OF ITEMS CORRECT BY REPORTING CATEGORY**

Grade	Year	REPORTING CATEGORY		
		1. Understanding Across Genres (GR 3-5) 1. Understanding/Analysis Across Genres (GR 6-8)	2. Understanding/Analysis of Literary Texts	3. Understanding/Analysis of Informational Texts
3	2012	64.7	57.6	58.6
	2013	72.2	62.3	65.2
	2014	64.6	58.0	51.5
4	2012	57.9	58.4	53.3
	2013	62.3	56.8	53.2
	2014	60.6	62.8	58.0
5	2012	67.5	62.1	67.3
	2013	73.1	70.8	71.8
	2014	75.7	67.2	71.3
3-5	2012	63.5	59.4	59.9
	2013	69.1	63.1	63.2
	2014	66.9	62.3	59.7

**AVERAGE PERCENTAGE OF ITEMS CORRECT BY REPORTING CATEGORY**

Grade	Year	REPORTING CATEGORY		
		1. Understanding Across Genres (GR 3-5) 1. Understanding/Analysis Across Genres (GR 6-8)	2. Understanding/Analysis of Literary Texts	3. Understanding/Analysis of Informational Texts
6	2012	65.1	58.0	52.2
	2013	59.7	55.0	53.3
	2014			
7	2012	63.4	55.0	54.5
	2013	59.6	55.7	68.1
	2014			
8	2012	67.3	61.7	62.7
	2013	65.8	64.1	55.4
	2014			
6-8	2012	65.2	58.1	56.3
	2013	61.7	58.2	58.7
	2014			

## PERCENTAGE SATISFACTORY (Levels 2 and 3)

Test	Year	White	African Amer	Hispanic	Econ Disadv	Special Educ	LEP	At Risk	Migrant	Male	Female	All	District
ENGLISH I	2012												
	2013												
	2014		41.2	33.3	38.4	8.3	25.0	32.4		27.3	51.4	39.7	50.9
Tests Taken	2012												
	2013												
	2014		165	36	164	12	24	173		99	105	204	13,789
ENGLISH II	2012												
	2013												
	2014		39.7	40.0	37.0	*	30.8	35.2		33.8	43.7	39.2	54.8
Tests Taken	2012												
	2013												
	2014		136	20	127	3	13	142		71	87	158	10,943

## NUMBER UNSATISFACTORY (Level 1)

Test	Year	White	African Amer	Hispanic	Econ Disadv	Special Educ	LEP	At Risk	Migrant	Male	Female	All	District
ENGLISH I	2012												
	2013												
	2014		97	24	101	11	18	117		72	51	123	6,774
Tests Taken	2012												
	2013												
	2014		165	36	164	12	24	173		99	105	204	13,789
ENGLISH II	2012												
	2013												
	2014		82	12	80	*	9	92		47	49	96	4,948
Tests Taken	2012												
	2013												
	2014		136	20	127	3	13	142		71	87	158	10,943

## PERCENTAGE ADVANCED (Level 3)

Test	Year	White	African Amer	Hispanic	Econ Disadv	Special Educ	LEP	At Risk	Migrant	Male	Female	All	District
ENGLISH I	2012												
	2013												
	2014		0.0	0.0	0.0	0.0	0.0	0.0		0.0	0.0	0.0	3.2
Tests Taken	2012												
	2013												
	2014		165	36	164	12	24	173		99	105	204	13,789
ENGLISH II	2012												
	2013												
	2014		0.0	0.0	0.0	*	0.0	0.0		0.0	0.0	0.0	2.7
Tests Taken	2012												
	2013												
	2014		136	20	127	3	13	142		71	87	158	10,943

## AVERAGE PERCENTAGE OF ITEMS CORRECT BY REPORTING CATEGORY

ENGLISH I	1. Understanding & Analysis Across Genres	1. Average Rating Short Answer #1 <sup>1</sup>	1. Average Rating Short Answer #2 <sup>1</sup>	2. Understanding & Analysis of Literary Texts	3. Understanding & Analysis of Informational Texts	4. Expository Composition <sup>2</sup>	5. Revision	6. Editing
2012								
2013								
2014	60.9	0.9	1.2	52.3	54.7	3.8	62.8	43.7

ENGLISH II	1. Understanding & Analysis Across Genres	1. Average Rating Short Answer #1 <sup>1</sup>	1. Average Rating Short Answer #2 <sup>1</sup>	2. Understanding & Analysis of Literary Texts	3. Understanding & Analysis of Informational Texts	4. Persuasive Composition <sup>2</sup>	5. Revision	6. Editing
2012								
2013								
2014	67.8	1.0	1.1	44.5	55.5	3.7	61.0	62.0

<sup>1</sup>Short answer rating scale: 0=Insufficient; 1=Partially Sufficient; 2=Sufficient; 3=Exemplary

<sup>2</sup>Average score points (0-8). A composition is rated twice on a scale of 1 to 4, and the ratings are summed to determine score points for the composition. Score point scale: 0=Nonscorable; 2=Very Limited; 3=between Very Limited and Basic; 4=Basic; 5=between Basic and Satisfactory; 6=Satisfactory; 7=between Satisfactory and Accomplished; 8=Accomplished



**PERCENTAGE SATISFACTORY (Levels 2 or 3)**

Grade	Year	White	African Amer	Hispanic	Econ Disadv	Special Educ	LEP	At Risk	Migrant	Male	Female	All	District	Number Tested (All Students)
4	2012	*	50.9	52.2	51.0	7.1	29.4	29.6		37.3	65.3	50.6	60.6	158
	2013	*	75.4	39.4	66.7	*	36.4	35.7		57.0	80.6	66.9	63.9	148
	2014	*	76.4	70.0	73.9	*	*	58.8	*	67.2	83.6	75.6	61.9	119

NUMBER TESTED IN GRADE 4													
2012	2	110	46	149	14	17	54		83	75	158	7,039	
2013	1	114	33	141	4	11	28		86	62	148	6,771	
2014	1	106	10	111	2	2	51	1	58	61	119	7,022	

**PERCENTAGE SATISFACTORY (Levels 2 or 3)**

Grade	Year	White	African Amer	Hispanic	Econ Disadv	Special Educ	LEP	At Risk	Migrant	Male	Female	All	District	Number Tested (All Students)
7	2012		61.0	50.9	55.2	*	42.4	47.4		50.0	62.1	56.3	59.2	112
	2013		61.8	48.9	53.3	*	47.1	38.1		40.0	62.3	52.3	57.1	111
	2014												54.6	0

NUMBER TESTED IN GRADE 7													
2012		59	53	105	3	33	76		54	58	112	9,456	
2013		55	47	105	2	34	63		50	61	111	9,785	
2014												10,339	

**NUMBER UNSATISFACTORY (Level 1)**

Grade	Year	White	African Amer	Hispanic	Econ Disadv	Special Educ	LEP	At Risk	Migrant	Male	Female	All	District	Number Tested (All Students)
4	2012	*	54	22	73	13	12	38		52	26	78	2,772	158
	2013	*	28	20	47	*	7	18		37	12	49	2,442	148
	2014	*	25	3	29	*	*	21	*	19	10	29	2,675	119

NUMBER TESTED IN GRADE 4													
2012	2	110	46	149	14	17	54		83	75	158	7,039	
2013	1	114	33	141	4	11	28		86	62	148	6,771	
2014	1	106	10	111	2	2	51	1	58	61	119	7,022	

**NUMBER UNSATISFACTORY (Level 1)**

Grade	Year	White	African Amer	Hispanic	Econ Disadv	Special Educ	LEP	At Risk	Migrant	Male	Female	All	District	Number Tested (All Students)
7	2012		23	26	47	*	19	40		27	22	49	3,859	112
	2013		21	24	49	*	18	39		30	23	53	4,198	111
	2014												4,690	0

NUMBER TESTED IN GRADE 7													
2012		59	53	105	3	33	76		54	58	112	9,456	
2013		55	47	105	2	34	63		50	61	111	9,785	
2014												10,339	

**PERCENTAGE ADVANCED (Level 3)**

Grade	Year	White	African Amer	Hispanic	Econ Disadv	Special Educ	LEP	At Risk	Migrant	Male	Female	All	District	Number Tested (All Students)
4	2012	*	1.8	2.2	2.0	0.0	0.0	0.0		1.2	2.7	1.9	5.1	158
	2013	*	7.9	6.1	7.8	*	0.0	0.0		4.7	11.3	7.4	4.7	148
	2014	*	3.8	0.0	1.8	*	*	2.0	*	0.0	6.6	3.4	3.7	119

NUMBER TESTED IN GRADE 4													
2012	2	110	46	149	14	17	54		83	75	158	7,039	
2013	1	114	33	141	4	11	28		86	62	148	6,771	
2014	1	106	10	111	2	2	51	1	58	61	119	7,022	

**PERCENTAGE ADVANCED (Level 3)**

Grade	Year	White	African Amer	Hispanic	Econ Disadv	Special Educ	LEP	At Risk	Migrant	Male	Female	All	District	Number Tested (All Students)
7	2012		0.0	0.0	0.0	*	0.0	0.0		0.0	0.0	0.0	3.4	112
	2013		0.0	0.0	0.0	*	0.0	0.0		0.0	0.0	0.0	1.5	111
	2014												3.0	0

NUMBER TESTED IN GRADE 7													
2012		59	53	105	3	33	76		54	58	112	9,456	
2013		55	47	105	2	34	63		50	61	111	9,785	
2014												10,339	

**AVERAGE PERCENTAGE OF ITEMS CORRECT BY REPORTING CATEGORY**

Grade	Year	REPORTING CATEGORY			
		1. Composition <sup>1</sup> GR 4: Personal Narrative GR 7: Expository	1. Composition <sup>1</sup> GR 4: Expository GR 7: Personal Narrative	2. Revision	3. Editing
4	2012	2.0	1.8	54.4	53.5
	2013	4.1	3.8	57.1	69.5
	2014	4.3	4.0	70.6	63.6
7	2012	1.7	2.1	61.3	59.3
	2013	3.9	4.4	62.2	56.8
	2014				

<sup>1</sup>Average score points (range 0-8). A STAAR composition is rated twice on a scale of 1 to 4, and the ratings are summed to determine score points for the composition. Score point scale: 0=Non-scorable; 2=Very Limited; 3=between Very Limited and Basic; 4=Basic; 5=between Basic and Satisfactory; 6=Satisfactory; 7=between Satisfactory and Accomplished; 8=Accomplished

**PERCENTAGE SATISFACTORY (Levels 2 or 3)**

Grade	Year	White	African Amer	Hispanic	Econ Disadv	Special Educ	LEP	At Risk	Migrant	Male	Female	All	District	Number Tested (All Students)
3	2012		48.7	49.1	48.7	33.3	47.8	38.4		51.1	46.1	48.9	55.4	235
	2013		61.1	57.1	59.5	*	49.0	49.7		56.2	61.7	59.1	57.5	254
	2014		67.7	51.0	63.6	71.4	45.9	53.8		61.4	65.3	63.1	59.3	176
4	2012	*	50.5	51.8	50.9	0.0	48.8	39.8		45.4	57.4	51.1	53.0	227
	2013	*	55.7	53.3	54.1	*	57.4	52.5		49.6	60.0	54.2	57.5	238
	2014	*	47.2	63.3	48.8	*	76.2	40.0	*	45.1	57.4	51.1	59.0	139
5	2012	*	55.8	63.1	60.6	0.0	59.2	44.3		58.2	60.6	59.3	64.1	226
	2013	*	95.1	91.7	93.5	*	91.9	89.7		91.7	95.1	93.4	81.7	212
	2014		85.1	94.9	87.8	*	97.1	82.6		84.1	91.7	87.7	81.4	154
3-5	2012	*	51.6	54.5	53.3	5.7	51.6	40.6		51.6	54.8	53.1	57.5	688
	2013	*	69.7	66.0	67.7	27.3	64.7	61.3		64.5	71.2	67.8	65.3	704
	2014	*	67.1	68.6	67.4	55.6	71.7	61.1	*	64.2	71.6	67.6	66.3	469

NUMBER TESTED IN GRADES 3-5													
2012	4	343	341	662	35	254	400			374	314	688	35,372
2013	2	330	371	679	11	289	400			363	340	704	34,686
2014	1	347	118	438	9	92	296	1		254	215	469	35,222



**PERCENTAGE SATISFACTORY (Levels 2 or 3)**

Grade	Year	White	African Amer	Hispanic	Econ Disadv	Special Educ	LEP	At Risk	Migrant	Male	Female	All	District	Number Tested (All Students)
6	2012	*	47.4	79.6	60.6	*	78.9	58.6		61.8	62.3	62.0	66.4	108
	2013		40.4	50.8	43.2	20.0	38.6	32.3		47.8	42.3	45.4	60.6	119
	2014												64.3	0
7	2012		29.8	42.6	35.2	*	39.4	28.0		32.7	38.6	35.7	59.9	112
	2013		49.1	75.6	60.8	*	75.0	58.3		53.2	67.2	61.1	59.9	108
	2014												55.1	0
8	2012	*	40.9	46.9	45.1	*	52.6	25.9		40.0	47.2	43.2	51.9	81
	2013		68.5	61.1	64.1	*	56.5	61.3		64.4	68.8	66.7	74.0	93
	2014												73.2	0
6-8	2012	*	39.2	57.0	47.1	22.2	58.9	36.6		45.2	49.3	47.2	60.3	301
	2013		52.4	61.3	55.0	35.7	54.5	50.5		54.1	59.6	56.9	63.7	320
	2014												63.3	0

NUMBER TESTED IN GRADES 6-8													
2012	2	158	135	280	9	90	184			155	146	301	26,044
2013		166	142	291	14	99	184			159	161	320	26,676
2014													27,304

**NUMBER UNSATISFACTORY (Level 1)**

Grade	Year	White	African Amer	Hispanic	Econ Disadv	Special Educ	LEP	At Risk	Migrant	Male	Female	All	District	Number Tested (All Students)
3	2012		61	59	117	4	48	98		65	55	120	5,287	235
	2013		44	60	100	*	52	88		53	51	104	5,086	254
	2014		41	24	59	2	20	54		39	26	65	4,988	176
4	2012	*	55	55	107	12	44	74		65	46	111	5,511	227
	2013	*	51	57	106	*	43	56		67	42	109	4,919	238
	2014	*	56	11	66	*	5	42	*	39	29	68	4,803	139
5	2012	*	50	41	85	17	31	64		51	41	92	4,228	226
	2013	*	5	9	13	*	7	11		9	5	14	2,035	212
	2014		17	2	18	*	1	19		13	6	19	2,088	154
3-5	2012	*	166	155	309	33	123	236		181	142	323	15,026	688
	2013	*	100	126	219	8	102	155		129	98	227	12,040	704
	2014	*	114	37	143	4	26	115	*	91	61	152	11,879	469

NUMBER TESTED IN GRADES 3-5													
2012	4	343	341	662	35	254	400			374	314	688	35,372
2013	2	330	371	679	11	289	400			363	340	704	34,686
2014	1	347	118	438	9	92	296	1		254	215	469	35,222

**NUMBER UNSATISFACTORY (Level 1)**

Grade	Year	White	African Amer	Hispanic	Econ Disadv	Special Educ	LEP	At Risk	Migrant	Male	Female	All	District	Number Tested (All Students)
6	2012	*	30	10	41	*	8	24		21	20	41	3,327	108
	2013		34	30	63	8	27	42		35	30	65	4,133	119
	2014												3,478	0
7	2012		40	31	68	*	20	54		37	35	72	3,705	112
	2013		28	11	40	*	8	25		22	20	42	3,851	108
	2014												4,536	0
8	2012	*	26	17	39	*	9	43		27	19	46	3,319	81
	2013		17	14	28	*	10	24		16	15	31	1,709	93
	2014												2,001	0
6-8	2012	*	96	58	148	7	37	121		85	74	159	10,351	301
	2013		79	55	131	9	45	91		73	65	138	9,693	320
	2014												10,015	0

NUMBER TESTED IN GRADES 6-8													
2012	2	158	135	280	9	90	184			155	146	301	26,044
2013		166	142	291	14	99	184			159	161	320	26,676
2014													27,304

PERCENTAGE ADVANCED (Level 3)

Grade	Year	White	African Amer	Hispanic	Econ Disadv	Special Educ	LEP	At Risk	Migrant	Male	Female	All	District	Number Tested (All Students)
3	2012		0.8	2.6	1.8	0.0	3.3	1.9		2.3	1.0	1.7	7.9	235
	2013		10.6	5.7	7.7	*	3.9	2.9		6.6	9.0	7.9	9.1	254
	2014		11.8	4.1	9.9	0.0	2.7	3.4		11.9	6.7	9.7	10.4	176
4	2012	*	8.1	3.5	5.5	0.0	3.5	2.4		5.9	5.6	5.7	6.1	227
	2013	*	3.5	7.4	5.2	*	7.9	6.8		3.0	8.6	5.5	9.5	238
	2014	*	3.8	6.7	3.9	*	4.8	1.4	*	0.0	8.8	4.3	14.0	139
5	2012	*	8.0	9.9	9.3	0.0	11.8	7.8		9.0	8.7	8.8	10.4	226
	2013	*	13.7	23.9	18.9	*	23.3	23.4		16.5	20.6	18.9	12.8	212
	2014		8.8	41.0	17.7	*	47.1	16.5		11.0	23.6	16.9	15.7	154
3-5	2012	*	5.5	5.3	5.4	0.0	5.9	3.8		5.6	5.1	5.4	8.1	688
	2013	*	9.1	11.6	10.2	0.0	11.1	9.5		8.3	12.4	10.4	10.4	704
	2014	*	8.4	16.9	10.7	0.0	19.6	7.8	*	8.3	13.0	10.4	13.3	469

NUMBER TESTED IN GRADE 3-5													
2012	4	343	341	662	35	254	397		374	314	688	35,372	
2013	2	330	371	679	11	289	400		363	340	704	34,686	
2014	1	347	118	438	9	92	296	1	254	215	469	35,222	

PERCENTAGE ADVANCED (Level 3)

Grade	Year	White	African Amer	Hispanic	Econ Disadv	Special Educ	LEP	At Risk	Migrant	Male	Female	All	District	Number Tested (All Students)
6	2012	*	0.0	2.0	1.0	*	2.6	1.7		0.0	1.9	0.9	9.8	108
	2013		1.8	4.9	2.7	0.0	2.3	1.6		6.0	0.0	3.4	8.5	119
	2014												9.6	0
7	2012		0.0	3.7	1.9	*	6.1	2.7		1.8	1.8	1.8	6.3	112
	2013		0.0	4.4	1.0	*	3.1	1.7		4.3	0.0	1.9	4.8	108
	2014												6.7	0
8	2012	*	0.0	0.0	0.0	*	0.0	0.0		0.0	0.0	0.0	0.4	81
	2013		1.9	0.0	1.3	*	0.0	1.6		2.2	0.0	1.1	0.9	93
	2014												1.0	0
6-8	2012	*	0.0	2.2	1.1	0.0	3.3	1.6		0.6	1.4	1.0	6.1	301
	2013		1.2	3.5	1.7	0.0	2.0	1.6		4.4	0.0	2.2	5.3	320
	2014												6.2	0

NUMBER TESTED IN GRADE 6-8													
2012	2	158	135	280	9	90	191			155	146	301	26,044
2013		166	142	291	14	99	184			159	161	320	26,676
2014													27,304

**AVERAGE PERCENTAGE OF ITEMS CORRECT BY REPORTING CATEGORY**

Grade	Year	REPORTING CATEGORY				
		1. Numbers, Operations, and Quantitative Reasoning	2. Patterns, Relationships, and Algebraic Reasoning	3. Geometry and Spatial Reasoning	4. Measurement	5. Probability and Statistics
3	2012	53.5	52.1	64.9	52.7	44.5
	2013	58.6	56.2	66.8	64.9	64.3
	2014	65.5	60.6	59.7	60.9	58.6
4	2012	58.5	57.2	61.5	51.8	53.8
	2013	63.3	60.6	66.7	55.0	45.3
	2014	58.4	59.4	65.7	55.2	48.8
5	2012	56.6	59.0	58.8	54.5	59.9
	2013	75.6	73.8	69.2	72.3	77.1
	2014	75.3	71.8	68.9	69.1	64.0
3-5	2012	56.2	56.1	61.8	53.0	52.6
	2013	65.3	63.0	67.5	63.8	61.7
	2014	66.6	63.9	64.5	61.9	57.5

**AVERAGE PERCENTAGE OF ITEMS CORRECT BY REPORTING CATEGORY**

Grade	Year	REPORTING CATEGORY				
		1. Numbers, Operations, and Quantitative Reasoning	2. Patterns, Relationships, and Algebraic Reasoning	3. Geometry and Spatial Reasoning	4. Measurement	5. Probability and Statistics
6	2012	42.0	48.2	48.7	40.0	45.8
	2013	47.4	48.6	39.4	36.7	43.9
	2014					
7	2012	40.0	41.6	43.0	31.3	40.4
	2013	43.4	55.2	55.1	40.6	40.8
	2014					
8	2012	42.4	37.0	35.6	35.6	40.2
	2013	48.4	47.8	43.3	41.5	36.8
	2014					
6-8	2012	41.3	42.8	43.1	35.6	42.3
	2013	46.3	50.6	45.8	39.4	40.8
	2014					

## PERCENTAGE SATISFACTORY (Levels 2 or 3)

Test	Year	White	African Amer	Hispanic	Econ Disadv	Special Educ	LEP	At Risk	Migrant	Male	Female	All	District
<b>ALGEBRA I</b>	<b>2012</b>		53.2	50.0	53.4	10.0	21.4	40.3		49.3	56.8	53.0	74.7
	<b>2013</b>		60.8	77.4	61.1		68.8	61.3		61.3	70.0	65.2	72.5
	<b>2014</b>		65.7	68.8	65.0	40.0	66.7	60.6		68.4	64.2	66.1	78.0
Tests Taken	<b>2012</b>		111	36	133	10	14	75		75	74	149	8,795
	<b>2013</b>		79	31	95		16	75		62	50	112	9,251
	<b>2014</b>		108	16	103	15	12	99		57	67	124	9,524



## NUMBER UNSATISFACTORY (Level 1)

Test	Year	White	African Amer	Hispanic	Econ Disadv	Special Educ	LEP	At Risk	Migrant	Male	Female	All	District
<b>ALGEBRA I</b>	<b>2012</b>		52	18	62	9	11	46		38	32	70	2,226
	<b>2013</b>		31	7	37		5	29		24	15	39	2,540
	<b>2014</b>		37	5	36	9	4	39		18	24	42	2,099
Tests Taken	<b>2012</b>		111	36	133	10	14	75		75	74	149	8,795
	<b>2013</b>		79	31	95		16	75		62	50	112	9,251
	<b>2014</b>		108	16	103	15	12	99		57	67	124	9,524

## PERCENTAGE ADVANCED (Level 3)

Test	Year	White	African Amer	Hispanic	Econ Disadv	Special Educ	LEP	At Risk	Migrant	Male	Female	All	District
<b>ALGEBRA I</b>	<b>2012</b>		2.7	5.6	3.8	0.0	0.0	0.0		2.7	4.1	3.4	7.0
	<b>2013</b>		0.0	0.0	0.0		0.0	0.0		0.0	2.0	0.9	8.6
	<b>2014</b>		1.9	0.0	1.9	0.0	0.0	2.0		1.8	1.5	1.6	9.9
Tests Taken	<b>2012</b>		111	36	133	10	14	77		75	74	149	8,795
	<b>2013</b>		79	31	95		16	75		62	50	112	9,251
	<b>2014</b>		108	16	103	15	12	99		57	67	124	9,524

## AVERAGE PERCENTAGE OF ITEMS CORRECT BY REPORTING CATEGORY

ALGEBRA I	1. Functional Relationships	2. Properties and Attributes of Functions	3. Linear Functions	4. Linear Equations and Inequalities	5. Quadratic and Other Nonlinear Functions
2012	45.1	39.5	39.9	37.9	37.4
2013	45.9	37.1	41.3	42.0	48.0
2014	43.3	39.7	45.2	44.5	44.6

**PERCENTAGE SATISFACTORY (Levels 2 or 3)**

Grade	Year	White	African Amer	Hispanic	Econ Disadv	Special Educ	LEP	At Risk	Migrant	Male	Female	All	District	Number Tested (All Students)
5	2012	*	62.7	55.6	59.9	10.0	44.6	41.4		62.8	54.7	59.0	58.2	227
	2013	*	86.1	70.1	77.4	*	67.5	64.8		72.9	83.3	78.0	65.1	209
	2014		72.8	89.7	78.2	*	88.2	69.1		74.4	80.6	77.3	61.3	154

NUMBER TESTED IN GRADE 5													
2012	1	118	108	217	20	74	111		121	106	227	10,697	
2013	1	101	107	199	2	83	105		107	102	209	10,180	
2014		114	39	147	1	34	110		82	72	154	9,073	

**PERCENTAGE SATISFACTORY (Levels 2 or 3)**

Grade	Year	White	African Amer	Hispanic	Econ Disadv	Special Educ	LEP	At Risk	Migrant	Male	Female	All	District	Number Tested (All Students)
8	2012	*	41.5	50.0	45.6	*	50.0	30.5		51.9	34.1	43.9	54.0	98
	2013		48.3	58.8	50.5	*	46.7	47.3		53.7	52.6	53.2	65.8	111
	2014												61.9	

NUMBER TESTED IN GRADE 8													
2012	1	53	42	90	1	20	59			54	44	98	9,431
2013		60	51	95	2	30	74			54	57	111	8,998
2014													9,466

**NUMBER UNSATISFACTORY (Level 1)**

Grade	Year	White	African Amer	Hispanic	Econ Disadv	Special Educ	LEP	At Risk	Migrant	Male	Female	All	District	Number Tested (All Students)
5	2012	*	44	48	87	18	41	65		45	48	93	4476	227
	2013	*	14	32	45	*	27	37		29	17	46	3551	209
	2014		31	4	32	*	4	34		21	14	35	3511	154

NUMBER TESTED IN GRADE 5													
2012	1	118	108	217	20	74	111			121	106	227	10,697
2013	1	101	107	199	2	83	105			107	102	209	10,180
2014		114	39	147	1	34	110			82	72	154	9,073

**NUMBER UNSATISFACTORY (Level 1)**

Grade	Year	White	African Amer	Hispanic	Econ Disadv	Special Educ	LEP	At Risk	Migrant	Male	Female	All	District	Number Tested (All Students)
8	2012	*	31	21	49	*	10	41		26	29	55	4335	98
	2013		31	21	47	*	16	39		25	27	52	3074	111
	2014												3605	

NUMBER TESTED IN GRADE 8													
2012	1	53	42	90	1	20	59			54	44	98	9,431
2013		60	51	95	2	30	74			54	57	111	8,998
2014													9,466

**PERCENTAGE ADVANCED (Level 3)**

Grade	Year	White	African Amer	Hispanic	Econ Disadv	Special Educ	LEP	At Risk	Migrant	Male	Female	All	District	Number Tested (All Students)
5	2012	*	5.9	5.6	6.0	0.0	1.4	1.8		5.8	5.7	5.7	6.5	227
	2013	*	30.7	7.5	18.6	*	7.2	6.7		18.7	18.6	18.7	6.6	209
	2014		7.9	5.1	7.5	*	5.9	5.5		6.1	8.3	7.1	5.3	154

NUMBER TESTED IN GRADE 5													
2012	1	118	108	217	20	74	111		121	106	227	10,697	
2013	1	101	107	199	2	83	105		107	102	209	10,180	
2014		114	39	147	1	34	110		82	72	154	9,073	



**PERCENTAGE ADVANCED (Level 3)**

Grade	Year	White	African Amer	Hispanic	Econ Disadv	Special Educ	LEP	At Risk	Migrant	Male	Female	All	District	Number Tested (All Students)
8	2012	*	0.0	2.4	1.1	*	0.0	0.0		0.0	2.3	1.0	4.2	98
	2013		0.0	2.0	1.1	*	3.3	1.4		0.0	1.8	0.9	7.1	111
	2014												11.3	

NUMBER TESTED IN GRADE 8													
2012	1	53	42	90	1	20	59			54	44	98	9,431
2013		60	51	95	2	30	74			54	57	111	8,998
2014													9,466

**AVERAGE PERCENTAGE OF ITEMS CORRECT BY REPORTING CATEGORY**

Grade	Year	REPORTING CATEGORY			
		1. Matter and Energy	2. Force, Motion, and Energy	3. Earth and Space	4. Organisms and Environments
5	2012	72.2	74.8	63.6	62.2
	2013	74.8	77.7	69.3	73.0
	2014	67.1	68.0	67.6	72.0
8	2012	52.3	52.2	49.9	53.9
	2013	55.6	54.0	43.6	51.4
	2014				

## PERCENTAGE SATISFACTORY (Levels 2 and 3)

Test	Year	White	African Amer	Hispanic	Econ Disadv	Special Educ	LEP	At Risk	Migrant	Male	Female	All	District
<b>BIOLOGY</b>	<b>2012</b>		70.9	48.3	65.9	0.0	46.2	54.5		62.2	71.6	66.9	82.9
	<b>2013</b>		73.6	85.0	76.3	*	72.7	68.1		74.6	77.6	75.9	84.4
	<b>2014</b>		75.9	68.8	75.8	40.0	50.0	71.6		70.7	78.8	75.0	89.8
Tests Taken	<b>2012</b>		117	29	132	10	13	77		74	74	148	8,881
	<b>2013</b>		87	20	93	1	11	69		59	49	108	9,374
	<b>2014</b>		108	16	99	15	10	88		58	66	124	9,672

## NUMBER UNSATISFACTORY (Level 1)

Test	Year	White	African Amer	Hispanic	Econ Disadv	Special Educ	LEP	At Risk	Migrant	Male	Female	All	District
<b>BIOLOGY</b>	<b>2012</b>		34	15	45	10	7	35		28	21	49	1,522
	<b>2013</b>		23	3	22	*	3	22		15	11	26	1,467
	<b>2014</b>		26	5	24	9	5	25		17	14	31	987
Tests Taken	<b>2012</b>		117	29	132	10	13	77		74	74	148	8,881
	<b>2013</b>		87	20	93	1	11	69		59	49	108	9,374
	<b>2014</b>		108	16	99	15	10	88		58	66	124	9,672

## PERCENTAGE ADVANCED (Level 3)

Test	Year	White	African Amer	Hispanic	Econ Disadv	Special Educ	LEP	At Risk	Migrant	Male	Female	All	District
<b>BIOLOGY</b>	<b>2012</b>		0.9	0.0	0.8	0.0	0.0	0.0		1.4	0.0	0.7	4.8
	<b>2013</b>		0.0	0.0	0.0	*	0.0	0.0		0.0	0.0	0.0	7.5
	<b>2014</b>		0.9	0.0	0.0	0.0	0.0	0.0		0.0	1.5	0.8	7.5
Tests Taken	<b>2012</b>		117	29	132	10	13	77		74	74	148	8,881
	<b>2013</b>		87	20	93	1	11	69		59	49	108	9,374
	<b>2014</b>		108	16	99	15	10	88		58	66	124	9,672

## AVERAGE PERCENTAGE OF ITEMS CORRECT BY REPORTING CATEGORY

<b>BIOLOGY</b>	1. Cell Structure and Function	2. Mechanisms of Genetics	3. Biological Evolution and Classification	4. Biological Processes and Systems	5. Interdependence within Environmental Systems
<b>2012</b>	36.2	39.1	45.9	42.6	46.6
<b>2013</b>	42.3	43.4	47.9	41.1	44.4
<b>2014</b>	36.3	45.6	52.8	46.8	44.6

## PERCENTAGE SATISFACTORY (Levels 2 or 3)

Test	Year	White	African Amer	Hispanic	Econ Disadv	Special Educ	LEP	At Risk	Migrant	Male	Female	All	District
U.S. HISTORY	2012												*
	2013		*		*			*			*	*	90.2
	2014		75.0	86.7	74.4	*	83.3	71.9		82.9	73.2	76.8	92.0
Tests Taken	2012												4
	2013		1		1			1			1	1	51
	2014		96	15	90	2	6	89		41	71	112	7,801

## NUMBER UNSATISFACTORY (Level 1)

Test	Year	White	African Amer	Hispanic	Econ Disadv	Special Educ	LEP	At Risk	Migrant	Male	Female	All	District
U.S. HISTORY	2012												*
	2013		*		*			*			*	*	5
	2014		24	2	23	*	1	25		7	19	26	625
Tests Taken	2012												4
	2013		1		1			1			1	1	51
	2014		96	15	90	2	6	89		41	71	112	7,801



## PERCENTAGE ADVANCED (Level 3)

Test	Year	White	African Amer	Hispanic	Econ Disadv	Special Educ	LEP	At Risk	Migrant	Male	Female	All	District
U.S. HISTORY	2012												*
	2013		*		*			*			*	*	2.0
	2014		0.0	6.7	1.1	*	0.0	1.1		0.0	1.4	0.9	10.3
Tests Taken	2012												4
	2013		1		1			1			1	1	51
	2014		96	15	90	2	6	89		41	71	112	7,801

## AVERAGE PERCENTAGE OF ITEMS CORRECT BY REPORTING CATEGORY

U.S. HISTORY	1. History	2. Geography and Culture	3. Government and Citizenship	4. Economics, Science, Technology, and Society
2012				
2013	*	*	*	*
2014	44.4	58.7	55.5	56.0

**PERCENTAGE SATISFACTORY (Levels 2 or 3)**

Grade	Year	White	African Amer	Hispanic	Econ Disadv	Special Educ	LEP	At Risk	Migrant	Male	Female	All	District	Number Tested (All Students)
3	2012			61.2	61.2	*	61.9	62.2		56.8	65.9	61.2	65.5	85
	2013			74.8	74.5	*	76.2	76.2		71.2	78.4	74.8	69.6	103
	2014			35.3	35.3	*	35.3	35.3		30.0	42.9	35.3	65.2	17
4	2012			51.9	51.9	*	51.9	51.9		42.9	62.9	51.9	64.4	77
	2013			40.0	40.4	*	39.8	40.9		27.1	53.2	40.0	61.0	95
	2014			71.4	68.4		75.0	75.0		60.0	100.0	71.4	60.8	21
5	2012			78.0	78.0	*	78.0	77.6		77.4	78.6	78.0	72.1	59
	2013			86.3	86.3	*	87.0	87.2		88.1	83.8	86.3	86.5	80
	2014			92.3	92.0	*	92.3	92.3		81.8	100.0	92.3	83.0	26
3-5	2012			62.4	62.4	*	62.7	62.7		57.3	68.3	62.4	66.8	221
	2013			66.2	66.3	36.4	66.8	67.3		61.3	71.1	66.2	70.6	278
	2014			70.3	68.9	*	71.4	71.4		58.3	85.7	70.3	68.7	64

NUMBER TESTED IN GRADES 3-5													
2012			221	221	5	220	217		117	104	221	14,102	
2013			278	276	11	271	272		142	135	278	13,810	
2014			64	61	2	63	63		36	28	64	14,654	

**NUMBER UNSATISFACTORY (Level 1)**

Grade	Year	White	African Amer	Hispanic	Econ Disadv	Special Educ	LEP	At Risk	Migrant	Male	Female	All	District	Number Tested (All Students)
3	2012			33	33	*	32	31		19	14	33	1,957	85
	2013			26	26	*	24	24		15	11	26	1,697	103
	2014			11	11	*	11	11		7	4	11	2,005	17
4	2012			37	37	*	37	37		24	13	37	1,728	77
	2013			57	56	*	56	55		35	22	57	1,915	95
	2014			6	6		5	5		6	0	6	1,891	21
5	2012			13	13	*	13	13		7	6	13	998	59
	2013			11	11	*	10	10		5	6	11	449	80
	2014			2	2	*	2	2		2	0	2	692	26
3-5	2012			83	83	*	82	81		50	33	83	4,683	221
	2013			94	93	7	90	89		55	39	94	4,061	278
	2014			19	19	*	18	18		15	4	19	4,588	64

NUMBER TESTED IN GRADES 3-5													
2012			221	221	5	220	217		117	104	221	14,102	
2013			278	276	11	271	272		142	135	278	13,810	
2014			64	61	2	63	63		36	28	64	14,654	

PERCENTAGE ADVANCED (Level 3)

Grade	Year	White	African Amer	Hispanic	Econ Disadv	Special Educ	LEP	At Risk	Migrant	Male	Female	All	District	Number Tested (All Students)
3	2012			8.2	8.2	*	8.3	8.5		9.1	7.3	8.2	13.4	85
	2013			14.6	14.7	*	14.9	14.9		13.5	15.7	14.6	17.4	103
	2014			11.8	11.8	*	11.8	11.8		0.0	28.6	11.8	17.6	17
4	2012			11.7	11.7	*	11.7	11.7		4.8	20.0	11.7	13.0	77
	2013			6.3	6.4	*	6.5	6.5		2.1	10.6	6.3	13.4	95
	2014			28.6	26.3		30.0	30.0		20.0	50.0	28.6	12.5	21
5	2012			10.2	10.2	*	10.2	10.3		12.9	7.1	10.2	12.1	59
	2013			17.5	17.5	*	16.9	16.7		9.5	24.3	17.5	11.6	80
	2014			34.6	32.0	*	34.6	34.6		18.2	46.7	34.6	15.8	26
3-5	2012			10.0	10.0	*	10.0	10.1		8.5	11.5	10.0	12.9	221
	2013			12.6	12.7	0.0	12.5	12.5		8.5	16.3	12.6	14.6	278
	2014			26.6	24.6	*	27.0	27.0		13.9	42.9	26.6	15.4	64

NUMBER TESTED IN GRADE 3-5													
2012			221	221	5	220	217		117	104	221	14,102	
2013			278	276	11	271	272		142	135	278	13,810	
2014			64	61	2	63	63		36	28	64	14,654	

**AVERAGE PERCENTAGE OF ITEMS CORRECT BY REPORTING CATEGORY**

Grade	Year	REPORTING CATEGORY		
		1. Understanding Across Genres	2. Understanding/Analysis of Literary Texts	3. Understanding/Analysis of Informational Texts
3	2012	64.1	57.4	48.1
	2013	58.1	62.2	60.3
	2014	55.9	46.7	38.6
4	2012	52.5	60.0	54.2
	2013	53.1	53.1	45.9
	2014	71.0	67.2	72.0
5	2012	57.1	67.9	62.2
	2013	63.9	62.6	72.3
	2014	76.9	68.2	79.9
3-5	2012	58.2	61.1	54.0
	2013	58.0	59.2	58.8
	2014	69.4	62.2	66.3

**PERCENTAGE SATISFACTORY (Levels 2 or 3)**

Grade	Year	White	African Amer	Hispanic	Econ Disadv	Special Educ	LEP	At Risk	Migrant	Male	Female	All	District	Number Tested (All Students)
4	2012			70.5	70.1	*	70.5	70.5		61.9	80.6	70.5	68.9	78
	2013			38.1	38.5	*	38.9	38.9		28.0	48.9	38.1	62.2	97
	2014			71.4	68.4		75.0	75.0		60.0	100.0	71.4	65.6	21

NUMBER TESTED IN GRADE 4													
2012			78	77	3	78	78		42	36	78	4,905	
2013			97	96	3	95	95		50	47	97	4,958	
2014			21	19		20	20		15	6	21	4,841	

**NUMBER UNSATISFACTORY (Level 1)**

Grade	Year	White	African Amer	Hispanic	Econ Disadv	Special Educ	LEP	At Risk	Migrant	Male	Female	All	District	Number Tested (All Students)
4	2012			23	23	*	23	23		16	7	23	1,524	78
	2013			60	59	*	58	58		36	24	60	1,876	97
	2014			6	6		5	5		6	0	6	1,667	21

NUMBER TESTED IN GRADE 4													
2012			78	77	3	78	78		42	36	78	4,905	
2013			97	96	3	95	95		50	47	97	4,958	
2014			21	19		20	20		15	6	21	4,841	



**PERCENTAGE ADVANCED (Level 3)**

Grade	Year	White	African Amer	Hispanic	Econ Disadv	Special Educ	LEP	At Risk	Migrant	Male	Female	All	District	Number Tested (All Students)
4	2012			7.7	7.8	*	7.7	7.7		7.1	8.3	7.7	7.7	78
	2013			1.0	1.0	*	1.1	1.1		0.0	2.1	1.0	3.6	97
	2014			0.0	0.0		0.0	0.0		0.0	0.0	0.0	5.9	21

NUMBER TESTED IN GRADE 4													
2012			78	77	3	78	78		42	36	78	4,905	
2013			97	96	3	95	95		50	47	97	4,958	
2014			21	19		20	20		15	6	21	4,841	

**AVERAGE PERCENTAGE OF ITEMS CORRECT BY REPORTING CATEGORY**

Grade	Year	REPORTING CATEGORY			
		1. Composition <sup>1</sup> Personal Narrative	1. Composition <sup>1</sup> Expository	2. Revision	3. Editing
4	2012	2.1	2.2	58.3	65.9
	2013	4.1	3.7	48.2	57.6
	2014	3.9	4.0	55.0	69.2

<sup>1</sup>Average score points (range 0-8). A STAAR composition is rated twice on a scale of 1 to 4, and the ratings are summed to determine score points for the composition. Score point scale: 0=Non-scorable; 2=Very Limited; 3=between Very Limited and Basic; 4=Basic; 5=between Basic and Satisfactory; 6=Satisfactory; 7=between Satisfactory and Accomplished; 8=Accomplished

**PERCENTAGE SATISFACTORY (Levels 2 or 3)**

Grade	Year	White	African Amer	Hispanic	Econ Disadv	Special Educ	LEP	At Risk	Migrant	Male	Female	All	District	Number Tested (All Students)
3	2012		*	*	*	*		*		*	*	*	54.7	3
	2013		57.1	*	66.7	66.7	*	75.0		66.7	*	66.7	67.5	9
	2014		*	*	*	*	*	*		*		*	63.3	3
4	2012		75.0	83.3	78.6	78.6	*	75.0		90.0	*	78.6	58.0	14
	2013		*	*	28.6	28.6	*	*		16.7	*	28.6	60.2	7
	2014		35.7	*	33.3	31.3	*	40.0		18.2	*	31.3	62.9	16
5	2012		90.9	62.5	77.8	78.9	62.5	73.3		80.0	*	78.9	67.0	19
	2013		91.7	92.3	91.7	92.0	88.9	90.0		89.5	100.0	92.0	86.5	25
	2014		100.0	*	100.0	100.0	*	100.0		100.0	*	100.0	86.3	8
3-5	2012		85.0	62.5	74.3	75.0	69.2	70.0		81.5	55.6	75.0	61.0	36
	2013		65.2	88.9	75.0	75.6	83.3	80.6		71.0	90.0	75.6	73.4	41
	2014		59.1	*	58.3	59.3	*	70.0		57.1	66.7	59.3	73.2	27

NUMBER TESTED IN GRADES 3-5													
2012		20	16	35	36	13	30		27	9	36	1,384	
2013		23	18	40	41	12	31		31	10	41	1,434	
2014		22	5	24	27	4	20		21	6	27	1,362	

**PERCENTAGE SATISFACTORY (Levels 2 or 3)**

Grade	Year	White	African Amer	Hispanic	Econ Disadv	Special Educ	LEP	At Risk	Migrant	Male	Female	All	District	Number Tested (All Students)
6	2012		100.0	71.4	93.3	87.5	*	87.5		81.8	*	87.5	65.5	16
	2013		70.0	*	78.6	80.0	*	76.9		78.6	*	80.0	55.9	15
	2014												51.6	0
7	2012		81.8	66.7	78.9	76.2	66.7	71.4		73.3	83.3	76.2	57.3	21
	2013		45.5	83.3	53.3	55.6	*	66.7		60.0	50.0	55.6	61.0	18
	2014												55.4	0
8	2012		92.9	100.0	94.7	95.0	*	92.9		90.9	100.0	95.0	58.0	20
	2013		100.0	100.0	100.0	95.0	100.0	100.0		92.3	100.0	95.0	74.5	20
	2014												75.0	0
6-8	2012		91.2	77.3	88.7	86.0	81.3	83.3		81.1	95.0	86.0	60.3	57
	2013		71.0	95.0	78.7	77.4	100.0	83.3		78.4	75.0	77.4	63.6	53
	2014												60.0	0

NUMBER TESTED IN GRADES 6-8													
2012		34	22	53	57	16	36		37	20	57	1,571	
2013		31	20	47	53	16	36		37	16	53	1,687	
2014												1,689	

**NUMBER UNSATISFACTORY (Level 1)**

Grade	Year	White	African Amer	Hispanic	Econ Disadv	Special Educ	LEP	At Risk	Migrant	Male	Female	All	District	Number Tested (All Students)
3	2012		*	*	*	*		*		*	*	*	149	3
	2013		3	*	3	3	*	2		2	*	3	114	9
	2014		*	*	*	*	*	*		*		*	114	3
4	2012		2	1	3	3	*	3		1	*	3	201	14
	2013		*	*	5	5	*	*		5	*	5	184	7
	2014		9	*	10	11	*	6		9	*	11	170	16
5	2012		1	3	4	4	3	4		3	*	4	190	19
	2013		1	1	2	2	1	2		2	0	2	84	25
	2014		0	*	0	0	*	0		0	*	0	81	8
3-5	2012		3	6	9	9	4	9		5	4	9	540	36
	2013		8	2	10	10	2	6		9	1	10	382	41
	2014		9	*	10	11	*	6		9	2	11	365	27

NUMBER TESTED IN GRADES 3-5													
2012		20	16	35	36	13	30		27	9	36	1,384	
2013		23	18	40	41	12	31		31	10	41	1,434	
2014		22	5	24	27	4	20		21	6	27	1,362	

**NUMBER UNSATISFACTORY (Level 1)**

Grade	Year	White	African Amer	Hispanic	Econ Disadv	Special Educ	LEP	At Risk	Migrant	Male	Female	All	District	Number Tested (All Students)
6	2012		0	2	1	2	*	1		2	*	2	181	16
	2013		3	*	3	3	*	3		3	*	3	270	15
	2014												281	0
7	2012		2	3	4	5	2	4		4	1	5	244	21
	2013		6	1	7	8	*	3		4	4	8	202	18
	2014												266	0
8	2012		1	0	1	1	*	1		1	0	1	199	20
	2013		0	0	0	1	0	0		1	0	1	142	20
	2014												128	0
6-8	2012		3	5	6	8	3	6		7	1	8	624	57
	2013		9	1	10	12	0	6		8	4	12	614	53
	2014												675	0

NUMBER TESTED IN GRADES 6-8													
2012		34	22	53	57	16	36		37	20	57	1,571	
2013		31	20	47	53	16	36		37	16	53	1,687	
2014												1,689	

PERCENTAGE ADVANCED (Level 3)

Grade	Year	White	African Amer	Hispanic	Econ Disadv	Special Educ	LEP	At Risk	Migrant	Male	Female	All	District	Number Tested (All Students)
3	2012		*	*	*	*		*		*	*	*	3.3	3
	2013		0.0	*	0.0	0.0	*	0.0		0.0	*	0.0	4.3	9
	2014		*	*	*	*	*	*		*		*	4.8	3
4	2012		12.5	0.0	7.1	7.1	*	0.0		0.0	*	7.1	3.3	14
	2013		*	*	0.0	0.0	*	*		0.0	*	0.0	3.5	7
	2014		7.1	*	6.7	6.3	*	10.0		0.0	*	6.3	6.3	16
5	2012		18.2	0.0	11.1	10.5	0.0	6.7		13.3	*	10.5	4.9	19
	2013		8.3	7.7	8.3	8.0	11.1	10.0		5.3	16.7	8.0	7.4	25
	2014		33.3	*	33.3	25.0	*	14.3		28.6	*	25.0	10.3	8
3-5	2012		15.0	0.0	8.6	8.3	0.0	3.3		7.4	11.1	8.3	4.0	36
	2013		4.3	5.6	5.0	4.9	8.3	6.5		3.2	10.0	4.9	5.4	41
	2014		13.6	*	12.5	11.1	*	10.0		9.5	16.7	11.1	7.7	27

NUMBER TESTED IN GRADE 3-5													
2012		20	16	35	36	13	30		27	9	36	1,384	
2013		23	18	40	41	12	31		31	10	41	1,434	
2014		22	5	24	27	4	20		21	6	27	1,362	

**PERCENTAGE ADVANCED (Level 3)**

Grade	Year	White	African Amer	Hispanic	Econ Disadv	Special Educ	LEP	At Risk	Migrant	Male	Female	All	District	Number Tested (All Students)
6	2012		11.1	0.0	6.7	6.3	*	0.0		9.1	*	6.3	3.6	16
	2013		20.0	*	14.3	13.3	*	7.7		14.3	*	13.3	3.1	15
	2014												2.9	0
7	2012		0.0	0.0	0.0	0.0	0.0	0.0		0.0	0.0	0.0	1.0	21
	2013		0.0	0.0	0.0	0.0	*	0.0		0.0	0.0	0.0	3.5	18
	2014												3.9	0
8	2012		0.0	0.0	0.0	0.0	*	0.0		0.0	0.0	0.0	1.1	20
	2013		10.0	0.0	5.6	5.0	0.0	7.1		7.7	0.0	5.0	2.5	20
	2014												2.9	0
6-8	2012		2.9	0.0	1.9	1.8	0.0	0.0		2.7	0.0	1.8	1.9	57
	2013		9.7	0.0	6.4	5.7	0.0	5.6		8.1	0.0	5.7	3.0	53
	2014												3.3	0

NUMBER TESTED IN GRADE 6-8													
2012		34	22	53	57	16	36		37	20	57	1,571	
2013		31	20	47	53	16	36		37	16	53	1,687	
2014												1,689	



## AVERAGE PERCENTAGE OF ITEMS CORRECT BY REPORTING CATEGORY

Grade	Year	REPORTING CATEGORY		
		1. Understanding Across Genres (GR 3-5) 1. Understanding/Analysis Across Genres (GR 6-8)	2. Understanding/Analysis of Literary Texts	3. Understanding/Analysis of Informational Texts
3	2012	*	*	*
	2013	33.3	57.1	39.3
	2014	*	*	*
4	2012	56.3	65.3	68.7
	2013	37.5	46.9	42.9
	2014	43.0	54.0	51.9
5	2012	61.8	62.1	52.3
	2013	57.0	66.9	59.7
	2014	78.1	74.2	65.2
3-5	2012	59.0	60.8	58.3
	2013	48.5	61.4	52.4
	2014	53.1	61.4	56.6

**AVERAGE PERCENTAGE OF ITEMS CORRECT BY REPORTING CATEGORY**

Grade	Year	REPORTING CATEGORY		
		1. Understanding Across Genres (GR 3-5) 1. Understanding/Analysis Across Genres (GR 6-8)	2. Understanding/Analysis of Literary Texts	3. Understanding/Analysis of Informational Texts
6	2012	46.9	65.2	46.4
	2013	68.3	62.9	59.0
	2014			
7	2012	67.3	55.5	46.0
	2013	56.3	54.6	43.0
	2014			
8	2012	73.8	58.6	62.5
	2013	70.6	64.2	51.3
	2014			
6-8	2012	63.8	59.3	51.9
	2013	65.1	60.6	50.6
	2014			

## PERCENTAGE SATISFACTORY (Levels 2 and 3)

Test	Year	White	African Amer	Hispanic	Econ Disadv	Special Educ	LEP	At Risk	Migrant	Male	Female	All	District
ENGLISH I	2012												
	2013												
	2014		84.6	*	80.0	83.3	*	81.3		88.9	77.8	83.3	50.6
Tests Taken	2012												
	2013												
	2014		13	5	15	18	3	16		9	9	18	405
ENGLISH II	2012												
	2013												
	2014		80.0	*	83.3	80.0	*	76.9		75.0	85.7	80.0	65.3
Tests Taken	2012												
	2013												
	2014		10	5	12	15	4	13		8	7	15	340

## NUMBER UNSATISFACTORY (Level 1)

Test	Year	White	African Amer	Hispanic	Econ Disadv	Special Educ	LEP	At Risk	Migrant	Male	Female	All	District
ENGLISH I	2012												
	2013												
	2014		2	*	3	3	*	3		1	2	3	200
Tests Taken	2012												
	2013												
	2014		13	5	15	18	3	16		9	9	18	405
ENGLISH II	2012												
	2013												
	2014		2	*	2	3	*	3		2	1	3	118
Tests Taken	2012												
	2013												
	2014		10	5	12	15	4	13		8	7	15	340

## PERCENTAGE ADVANCED (Level 3)

Test	Year	White	African Amer	Hispanic	Econ Disadv	Special Educ	LEP	At Risk	Migrant	Male	Female	All	District
ENGLISH I	2012												
	2013												
	2014		7.7	*	6.7	11.1	*	6.3		11.1	11.1	11.1	3.5
Tests Taken	2012												
	2013												
	2014		13	5	15	18	3	16		9	9	18	405
ENGLISH II	2012												
	2013												
	2014		20.0	*	16.7	20.0	*	15.4		25.0	14.3	20.0	12.6
Tests Taken	2012												
	2013												
	2014		10	5	12	15	4	13		8	7	15	340

## AVERAGE PERCENTAGE OF ITEMS CORRECT BY REPORTING CATEGORY

ENGLISH I	1. Understanding & Analysis Across Genres	2. Understanding & Analysis of Literary Texts	3. Understanding & Analysis of Informational Texts	4. Literary Composition <sup>1</sup>	5. Revision	6. Editing
2012						
2013						
2014	76.4	55.6	63.0	3.7	57.4	67.3

ENGLISH II	1. Understanding & Analysis Across Genres	2. Understanding & Analysis of Literary Texts	3. Understanding & Analysis of Informational Texts	4. Expository Composition <sup>1</sup>	5. Revision	6. Editing
2012						
2013						
2014	61.7	61.5	50.4	3.3	54.8	79.3

<sup>1</sup>Average score points (range 0-6). A STAAR M composition is rated twice on a scale of 0 to 3, and the ratings are summed to determine score points for the composition. Score point scale: 0=Non-scorable; 2=Very Limited; 3=between Very Limited and Basic; 4=Basic; 5=between Basic and Satisfactory; 6=Satisfactory

**PERCENTAGE SATISFACTORY (Levels 2 or 3)**

Grade	Year	White	African Amer	Hispanic	Econ Disadv	Special Educ	LEP	At Risk	Migrant	Male	Female	All	District	Number Tested (All Students)
4	2012		80.0	*	85.7	85.7	*	83.3		80.0	*	85.7	57.5	14
	2013		100.0	*	90.0	90.0	*	*		100.0	*	90.0	48.9	10
	2014		57.1	*	53.3	56.3	*	50.0		36.4	*	56.3	47.7	16

NUMBER TESTED IN GRADE 4													
2012		10	4	14	14	3	12		10	4	14	475	
2013		6	3	10	10	2	4		9	1	10	452	
2014		14	2	15	16	1	10		11	5	16	449	

**PERCENTAGE SATISFACTORY (Levels 2 or 3)**

Grade	Year	White	African Amer	Hispanic	Econ Disadv	Special Educ	LEP	At Risk	Migrant	Male	Female	All	District	Number Tested (All Students)
7	2012		100.0	37.5	77.8	71.4	*	69.2		62.5	*	71.4	56.7	21
	2013		91.7	100.0	93.8	94.4	*	90.0		100.0	87.5	94.4	63.7	18
	2014												62.9	0

NUMBER TESTED IN GRADE 7													
2012		11	8	18	21	5	13		16	5	21	586	
2013		12	6	16	18	4	10		10	8	18	509	
2014												599	



**NUMBER UNSATISFACTORY (Level 1)**

Grade	Year	White	African Amer	Hispanic	Econ Disadv	Special Educ	LEP	At Risk	Migrant	Male	Female	All	District	Number Tested (All Students)
4	2012		2	*	2	2	*	2		2	*	2	202	14
	2013		0	*	1	1	*	*		0	*	1	231	10
	2014		6	*	7	7	*	5		7	*	7	235	16

NUMBER TESTED IN GRADE 4													
2012		10	4	14	14	3	12		10	4	14	475	
2013		6	3	10	10	2	4		9	1	10	452	
2014		14	2	15	16	1	10		11	5	16	449	

**NUMBER UNSATISFACTORY (Level 1)**

Grade	Year	White	African Amer	Hispanic	Econ Disadv	Special Educ	LEP	At Risk	Migrant	Male	Female	All	District	Number Tested (All Students)
7	2012		0	5	4	6	*	4		6	*	6	254	21
	2013		1	0	1	1	*	1		0	1	1	185	18
	2014												222	0

NUMBER TESTED IN GRADE 7													
2012		11	8	18	21	5	13		16	5	21	586	
2013		12	6	16	18	4	10		10	8	18	509	
2014												599	

**PERCENTAGE ADVANCED (Level 3)**

Grade	Year	White	African Amer	Hispanic	Econ Disadv	Special Educ	LEP	At Risk	Migrant	Male	Female	All	District	Number Tested (All Students)
4	2012		0.0	*	0.0	0.0	*	0.0		0.0	*	0.0	5.3	14
	2013		50.0	*	30.0	30.0	*	*		33.3	*	30.0	8.6	10
	2014		14.3	*	13.3	12.5	*	20.0		0.0	*	12.5	8.5	16

NUMBER TESTED IN GRADE 4													
2012		10	4	14	14	3	12		10	4	14	475	
2013		6	3	10	10	2	4		9	1	10	452	
2014		14	2	15	16	1	10		11	5	16	449	

**PERCENTAGE ADVANCED (Level 3)**

Grade	Year	White	African Amer	Hispanic	Econ Disadv	Special Educ	LEP	At Risk	Migrant	Male	Female	All	District	Number Tested (All Students)
7	2012		9.1	0.0	5.6	4.8	*	7.7		0.0	*	4.8	2.7	21
	2013		8.3	16.7	12.5	11.1	*	10.0		10.0	12.5	11.1	6.3	18
	2014												6.3	0

NUMBER TESTED IN GRADE 7													
2012		11	8	18	21	5	13		16	5	21	586	
2013		12	6	16	18	4	10		10	8	18	509	
2014												599	

**AVERAGE PERCENTAGE OF ITEMS CORRECT BY REPORTING CATEGORY**

Grade	Year	REPORTING CATEGORY		
		1. Composition <sup>1</sup> GR 4: Personal Narrative GR 7: Expository	2. Revision	3. Editing
4	2012	1.5	42.9	47.1
	2013	2.6	81.4	72.0
	2014	2.0	54.5	59.6
7	2012	1.0	51.6	56.6
	2013	3.0	66.7	66.4
	2014			

<sup>1</sup>Average score points (range 0-6). A STAAR M composition is rated twice on a scale of 0 to 3, and the ratings are summed to determine score points for the composition. Score point scale: 0=Non-scorable; 2=Very Limited; 3=between Very Limited and Basic; 4=Basic; 5=between Basic and Satisfactory; 6=Satisfactory

**PERCENTAGE SATISFACTORY (Levels 2 or 3)**

Grade	Year	White	African Amer	Hispanic	Econ Disadv	Special Educ	LEP	At Risk	Migrant	Male	Female	All	District	Number Tested (All Students)
3	2012		*	*	*	*	*	*		*	*	*	52.0	4
	2013		71.4	*	66.7	66.7	*	75.0		66.7	*	66.7	64.4	9
	2014		*	*	*	*	*	*		*		*	64.2	3
4	2012		100.0	90.0	94.7	94.7	100.0	94.1		92.3	100.0	94.7	61.2	19
	2013		83.3	100.0	91.7	91.7	*	100.0		90.0	*	91.7	61.7	12
	2014		73.3	*	75.0	76.5	*	70.0		66.7	*	76.5	70.3	17
5	2012		81.8	42.9	64.7	66.7	42.9	57.1		60.0	*	66.7	60.6	18
	2013		84.6	100.0	93.1	93.3	100.0	92.0		90.9	100.0	93.3	77.2	30
	2014		100.0	*	100.0	100.0	*	100.0		100.0	*	100.0	79.1	9
3-5	2012		85.7	75.0	80.0	80.5	75.0	77.1		73.3	100.0	80.5	58.7	41
	2013		80.8	96.0	88.0	88.2	94.7	89.7		86.8	92.3	88.2	69.1	51
	2014		82.6	100.0	84.6	86.2	*	85.7		82.6	100.0	86.2	72.7	29

NUMBER TESTED IN GRADES 3-5													
2012		21	20	40	41	16	35		30	11	41	1,354	
2013		26	25	50	51	19	39		38	13	51	1,433	
2014		23	6	26	29	5	21		23	6	29	1,378	

**PERCENTAGE SATISFACTORY (Levels 2 or 3)**

Grade	Year	White	African Amer	Hispanic	Econ Disadv	Special Educ	LEP	At Risk	Migrant	Male	Female	All	District	Number Tested (All Students)
6	2012		77.8	85.7	86.7	81.3	*	75.0		81.8	*	81.3	46.2	16
	2013		100.0	*	100.0	100.0	*	100.0		100.0	*	100.0	54.3	15
	2014												52.0	0
7	2012		75.0	25.0	57.9	57.1	33.3	46.7		53.3	66.7	57.1	50.5	21
	2013		63.6	100.0	73.3	72.2	*	77.8		90.0	50.0	72.2	49.4	18
	2014												48.8	0
8	2012		50.0	66.7	52.6	55.0	*	42.9		54.5	55.6	55.0	46.2	20
	2013		100.0	88.9	94.4	90.5	85.7	93.3		85.7	100.0	90.5	71.4	21
	2014												71.0	0
6-8	2012		65.7	57.1	64.2	63.2	62.5	51.4		62.2	65.0	63.2	47.7	57
	2013		87.5	95.0	89.4	87.0	93.8	91.9		92.1	75.0	87.0	58.5	54
	2014												56.7	0

NUMBER TESTED IN GRADES 6-8													
2012		35	21	53	57	16	37		37	20	57	1,554	
2013		32	20	47	54	16	37		38	16	54	1,659	
2014												1,684	

**NUMBER UNSATISFACTORY (Level 1)**

Grade	Year	White	African Amer	Hispanic	Econ Disadv	Special Educ	LEP	At Risk	Migrant	Male	Female	All	District	Number Tested (All Students)
3	2012		*	*	*	*	*	*		*	*	*	157	4
	2013		2	*	3	3	*	2		2	*	3	120	9
	2014		*	*	*	*	*	*		*		*	113	3
4	2012		0	1	1	1	0	1		1	0	1	182	19
	2013		1	0	1	1	*	0		1	*	1	181	12
	2014		4	*	4	4	*	3		4	*	4	138	17
5	2012		2	4	6	6	4	6		6	*	6	220	18
	2013		2	0	2	2	0	2		2	0	2	142	30
	2014		0	*	0	0	*	0		0	*	0	125	9
3-5	2012		3	5	8	8	4	8		8	0	8	559	41
	2013		5	1	6	6	1	4		5	1	6	443	51
	2014		4	0	4	4	*	3		4	0	4	376	29

NUMBER TESTED IN GRADES 3-5													
2012		21	20	40	41	16	35		30	11	41	1,354	
2013		26	25	50	51	19	39		38	13	51	1,433	
2014		23	6	26	29	5	21		23	6	29	1,378	



**NUMBER UNSATISFACTORY (Level 1)**

Grade	Year	White	African Amer	Hispanic	Econ Disadv	Special Educ	LEP	At Risk	Migrant	Male	Female	All	District	Number Tested (All Students)
6	2012		2	1	2	3	*	2		2	*	3	276	16
	2013		0	*	0	0	*	0		0	*	0	272	15
	2014												271	0
7	2012		3	6	8	9	4	8		7	2	9	276	21
	2013		4	0	4	5	*	2		1	4	5	257	18
	2014												310	0
8	2012		7	2	9	9	*	8		5	4	9	260	20
	2013		0	1	1	2	1	1		2	0	2	159	21
	2014												149	0
6-8	2012		12	9	19	21	6	18		14	7	21	812	57
	2013		4	1	5	7	1	3		3	4	7	688	54
	2014												730	0

NUMBER TESTED IN GRADES 6-8													
2012		35	21	53	57	16	37		37	20	57	1,554	
2013		32	20	47	54	16	37		38	16	54	1,659	
2014												1,684	

PERCENTAGE ADVANCED (Level 3)

Grade	Year	White	African Amer	Hispanic	Econ Disadv	Special Educ	LEP	At Risk	Migrant	Male	Female	All	District	Number Tested (All Students)
3	2012		*	*	*	*	*	*		*	*	*	4.0	4
	2013		14.3	*	11.1	11.1	*	12.5		16.7	*	11.1	7.4	9
	2014		*	*	*	*	*	*		*		*	7.6	3
4	2012		0.0	10.0	5.3	5.3	12.5	5.9		7.7	0.0	5.3	1.7	19
	2013		0.0	0.0	0.0	0.0	*	0.0		0.0	*	0.0	4.7	12
	2014		6.7	*	6.3	5.9	*	10.0		0.0	*	5.9	6.5	17
5	2012		0.0	0.0	0.0	0.0	0.0	0.0		0.0	*	0.0	0.7	18
	2013		0.0	11.8	6.9	6.7	15.4	8.0		9.1	0.0	6.7	3.9	30
	2014		33.3	*	28.6	33.3	*	37.5		37.5	*	33.3	6.0	9
3-5	2012		0.0	5.0	2.5	2.4	6.3	2.9		3.3	0.0	2.4	1.8	41
	2013		3.8	8.0	6.0	5.9	10.5	7.7		7.9	0.0	5.9	5.0	51
	2014		17.4	16.7	15.4	17.2	*	23.8		17.4	16.7	17.2	6.5	29

NUMBER TESTED IN GRADE 3-5													
2012		21	20	40	41	16	35		30	11	41	1,354	
2013		26	25	50	51	19	39		38	13	51	1,433	
2014		23	6	26	29	5	21		23	6	29	1,378	

PERCENTAGE ADVANCED (Level 3)

Grade	Year	White	African Amer	Hispanic	Econ Disadv	Special Educ	LEP	At Risk	Migrant	Male	Female	All	District	Number Tested (All Students)
6	2012		0.0	0.0	0.0	0.0	*	0.0		0.0	*	0.0	5.5	16
	2013		0.0	*	0.0	6.7	*	7.7		7.1	*	6.7	4.9	15
	2014												3.4	0
7	2012		8.3	0.0	5.3	4.8	0.0	6.7		6.7	0.0	4.8	1.1	21
	2013		0.0	0.0	0.0	0.0	*	0.0		0.0	0.0	0.0	3.0	18
	2014												2.3	0
8	2012		0.0	16.7	5.3	5.0	*	7.1		9.1	0.0	5.0	1.2	20
	2013		9.1	0.0	5.6	4.8	0.0	6.7		7.1	0.0	4.8	2.2	21
	2014												1.9	0
6-8	2012		2.9	4.8	3.8	3.5	6.3	5.4		5.4	0.0	3.5	2.6	57
	2013		3.1	5.0	2.1	3.7	6.3	5.4		5.3	0.0	3.7	3.4	54
	2014												2.6	0

NUMBER TESTED IN GRADE 6-8													
2012		35	21	53	57	16	37		37	20	57	1,554	
2013		32	20	47	54	16	37		38	16	54	1,659	
2014												1,684	

## AVERAGE PERCENTAGE OF ITEMS CORRECT BY REPORTING CATEGORY

Grade	Year	REPORTING CATEGORY				
		1. Numbers, Operations, and Quantitative Reasoning	2. Patterns, Relationships, and Algebraic Reasoning	3. Geometry and Spatial Reasoning	4. Measurement	5. Probability and Statistics
3	2012	*	*	*	*	*
	2013	62.4	51.9	73.0	59.3	71.1
	2014	*	*	*	*	*
4	2012	59.9	71.6	60.0	51.8	55.3
	2013	69.2	80.0	45.8	54.2	47.9
	2014	67.9	65.9	44.7	61.8	47.1
5	2012	49.2	55.6	46.3	57.4	42.0
	2013	63.1	59.3	61.1	68.3	56.7
	2014	80.2	68.9	72.2	81.5	61.7
3-5	2012	54.1	60.4	53.0	54.5	47.9
	2013	64.4	62.9	59.6	63.4	57.2
	2014	72.9	66.9	54.5	69.0	54.3

## AVERAGE PERCENTAGE OF ITEMS CORRECT BY REPORTING CATEGORY

Grade	Year	REPORTING CATEGORY				
		1. Numbers, Operations, and Quantitative Reasoning	2. Patterns, Relationships, and Algebraic Reasoning	3. Geometry and Spatial Reasoning	4. Measurement	5. Probability and Statistics
6	2012	57.1	50.6	54.2	35.4	49.0
	2013	63.3	52.7	64.4	58.9	83.3
	2014					
7	2012	41.6	38.1	47.6	33.3	44.6
	2013	51.5	46.7	52.1	44.4	50.7
	2014					
8	2012	45.5	45.0	50.0	41.0	43.8
	2013	51.0	56.7	52.4	47.1	57.1
	2014					
6-8	2012	47.3	44.0	50.3	36.6	45.5
	2013	54.6	52.2	55.6	49.5	62.3
	2014					

## PERCENTAGE SATISFACTORY (Levels 2 and 3)

Test	Year	White	African Amer	Hispanic	Econ Disadv	Special Educ	LEP	At Risk	Migrant	Male	Female	All	District
<b>ALGEBRA I</b>	<b>2012</b>		*	*	42.9	50.0	*	33.3		57.1	*	50.0	32.5
	<b>2013</b>		57.1	*	58.8	63.2	*	64.7		41.7	100.0	63.2	36.9
	<b>2014</b>		*	*	57.1	50.0		42.9		*	*	50.0	46.1
Tests Taken	<b>2012</b>		5	3	7	8	2	6		7	1	8	280
	<b>2013</b>		14	5	17	19	4	17		12	7	19	339
	<b>2014</b>		5	2	7	8		7		5	3	8	360

## NUMBER UNSATISFACTORY (Level 1)

Test	Year	White	African Amer	Hispanic	Econ Disadv	Special Educ	LEP	At Risk	Migrant	Male	Female	All	District
<b>ALGEBRA I</b>	<b>2012</b>		*	*	4	4	*	4		3	*	4	189
	<b>2013</b>		6	*	7	7	*	6		7	0	7	214
	<b>2014</b>		*	*	3	4		4		*	*	4	194
Tests Taken	<b>2012</b>		5	3	7	8	2	6		7	1	8	280
	<b>2013</b>		14	5	17	19	4	17		12	7	19	339
	<b>2014</b>		5	2	7	8		7		5	3	8	360

## PERCENTAGE ADVANCED (Level 3)

Test	Year	White	African Amer	Hispanic	Econ Disadv	Special Educ	LEP	At Risk	Migrant	Male	Female	All	District
<b>ALGEBRA I</b>	<b>2012</b>		*	*	0.0	0.0	*	0.0		0.0	*	0.0	0.4
	<b>2013</b>		0.0	*	0.0	0.0	*	0.0		0.0	0.0	0.0	0.0
	<b>2014</b>		*	*	0.0	0.0		0.0		*	*	0.0	1.4
Tests Taken	<b>2012</b>		5	3	7	8	2	6		7	1	8	280
	<b>2013</b>		14	5	17	19	4	17		12	7	19	339
	<b>2014</b>		5	2	7	8		7		5	3	8	360



## AVERAGE PERCENTAGE OF ITEMS CORRECT BY REPORTING CATEGORY

<b>ALGEBRA I</b>	1. Functional Relationships	2. Properties and Attributes of Functions	3. Linear Functions	4. Linear Equations and Inequalities	5. Quadratic and Other Nonlinear Functions
<b>2012</b>	35.4	33.8	39.6	40.6	44.6
<b>2013</b>	64.0	38.9	46.9	50.7	39.8
<b>2014</b>	52.1	47.5	46.9	34.4	41.1

**PERCENTAGE SATISFACTORY (Levels 2 or 3)**

Grade	Year	White	African Amer	Hispanic	Econ Disadv	Special Educ	LEP	At Risk	Migrant	Male	Female	All	District	Number Tested (All Students)
5	2012		75.0	70.0	72.2	72.2	66.7	66.7		66.7	*	72.2	48.8	18
	2013	*	75.0	73.3	74.1	75.0	76.9	78.3		71.4	85.7	75.0	58.1	28
	2014		66.7	*	85.7	77.8	*	75.0		75.0	*	77.8	55.5	9

NUMBER TESTED IN GRADE 5													
2012		8	10	18	18	9	15		15	3	18	531	
2013	1	12	15	27	28	13	23		21	7	28	540	
2014		6	3	7	9	3	8		8	1	9	501	

**PERCENTAGE SATISFACTORY (Levels 2 or 3)**

Grade	Year	White	African Amer	Hispanic	Econ Disadv	Special Educ	LEP	At Risk	Migrant	Male	Female	All	District	Number Tested (All Students)
8	2012		64.3	66.7	63.2	65.0	*	50.0		63.6	66.7	65.0	58.2	20
	2013		80.0	50.0	68.4	61.9	57.1	50.0		64.3	57.1	61.9	59.3	21
	2014												63.5	

NUMBER TESTED IN GRADE 8													
2012		14	6	19	20	5	14		11	9	20	457	
2013		10	10	19	21	7	16		14	7	21	526	
2014												474	

**NUMBER UNSATISFACTORY (Level 1)**

Grade	Year	White	African Amer	Hispanic	Econ Disadv	Special Educ	LEP	At Risk	Migrant	Male	Female	All	District	Number Tested (All Students)
5	2012		2	3	5	5	3	5		5	*	5	272	18
	2013	*	3	4	7	7	3	5		6	1	7	226	28
	2014		2	*	1	2	*	2		2	*	2	223	9

NUMBER TESTED IN GRADE 5													
2012		8	10	18	18	9	15		15	3	18	531	
2013	1	12	15	27	28	13	23		21	7	28	540	
2014		6	3	7	9	3	8		8	1	9	501	

**NUMBER UNSATISFACTORY (Level 1)**

Grade	Year	White	African Amer	Hispanic	Econ Disadv	Special Educ	LEP	At Risk	Migrant	Male	Female	All	District	Number Tested (All Students)
8	2012		5	2	7	7	*	7		4	3	7	191	20
	2013		2	5	6	8	3	8		5	3	8	214	21
	2014												173	

NUMBER TESTED IN GRADE 8													
2012		14	6	19	20	5	14		11	9	20	457	
2013		10	10	19	21	7	16		14	7	21	526	
2014												474	

**PERCENTAGE ADVANCED (Level 3)**

Grade	Year	White	African Amer	Hispanic	Econ Disadv	Special Educ	LEP	At Risk	Migrant	Male	Female	All	District	Number Tested (All Students)
5	2012		12.5	0.0	5.6	5.6	0.0	0.0		6.7	*	5.6	6.2	18
	2013	*	8.3	13.3	11.1	10.7	15.4	13.0		9.5	14.3	10.7	6.1	28
	2014		0.0	*	14.3	11.1	*	12.5		12.5	*	11.1	7.6	9

NUMBER TESTED IN GRADE 5													
2012		8	10	18	18	9	15		15	3	18	531	
2013	1	12	15	27	28	13	23		21	7	28	540	
2014		6	3	7	9	3	8		8	1	9	501	

**PERCENTAGE ADVANCED (Level 3)**

Grade	Year	White	African Amer	Hispanic	Econ Disadv	Special Educ	LEP	At Risk	Migrant	Male	Female	All	District	Number Tested (All Students)
8	2012		0.0	0.0	0.0	0.0	*	0.0		0.0	0.0	0.0	0.4	20
	2013		10.0	0.0	5.3	4.8	0.0	6.3		7.1	0.0	4.8	2.5	21
	2014												3.8	

NUMBER TESTED IN GRADE 8													
2012		14	6	19	20	5	14		11	9	20	457	
2013		10	10	19	21	7	16		14	7	21	526	
2014												474	

**AVERAGE PERCENTAGE OF ITEMS CORRECT BY REPORTING CATEGORY**

Grade	Year	REPORTING CATEGORY			
		1. Matter and Energy	2. Force, Motion, and Energy	3. Earth and Space	4. Organisms and Environments
5	2012	59.3	73.6	67.2	63.6
	2013	72.0	80.8	63.2	74.7
	2014	83.3	86.1	62.2	83.8
8	2012	50.5	60.5	54.1	50.5
	2013	58.4	68.6	60.6	58.4
	2014				



## PERCENTAGE SATISFACTORY (Levels 2 and 3)

Test	Year	White	African Amer	Hispanic	Econ Disadv	Special Educ	LEP	At Risk	Migrant	Male	Female	All	District
<b>BIOLOGY</b>	<b>2012</b>		*	*	0.0	0.0	*	0.0		0.0	*	0.0	31.7
	<b>2013</b>		58.3	*	56.3	58.8	*	56.3		40.0	85.7	58.8	42.6
	<b>2014</b>		*	*	50.0	57.1		50.0		*	*	57.1	46.6
Tests Taken	<b>2012</b>		5	3	7	8	2	6		7	1	8	262
	<b>2013</b>		12	5	16	17	4	16		10	7	17	331
	<b>2014</b>		4	2	6	7		6		4	3	7	350

## NUMBER UNSATISFACTORY (Level 1)

Test	Year	White	African Amer	Hispanic	Econ Disadv	Special Educ	LEP	At Risk	Migrant	Male	Female	All	District
<b>BIOLOGY</b>	<b>2012</b>		*	*	7	8	*	6		7	*	8	179
	<b>2013</b>		5	*	7	7	*	7		6	1	7	190
	<b>2014</b>		*	*	3	3		3		*	*	3	187
Tests Taken	<b>2012</b>		5	3	7	8	2	6		7	1	8	262
	<b>2013</b>		12	5	16	17	4	16		10	7	17	331
	<b>2014</b>		4	2	6	7		6		4	3	7	350

## PERCENTAGE ADVANCED (Level 3)

Test	Year	White	African Amer	Hispanic	Econ Disadv	Special Educ	LEP	At Risk	Migrant	Male	Female	All	District
<b>BIOLOGY</b>	<b>2012</b>		*	*	0.0	0.0	*	0.0		0.0	*	0.0	0.0
	<b>2013</b>		0.0	*	0.0	0.0	*	0.0		0.0	0.0	0.0	0.0
	<b>2014</b>		*	*	0.0	0.0		0.0		*	*	0.0	1.1
Tests Taken	<b>2012</b>		5	3	7	8	2	6		7	1	8	262
	<b>2013</b>		12	5	16	17	4	16		10	7	17	331
	<b>2014</b>		4	2	6	7		6		4	3	7	350

## AVERAGE PERCENTAGE OF ITEMS CORRECT BY REPORTING CATEGORY

<b>BIOLOGY</b>	1. Cell Structure and Function	2. Mechanisms of Genetics	3. Biological Evolution and Classification	4. Biological Processes and Systems	5. Interdependence within Environmental Systems
<b>2012</b>	37.5	32.8	28.1	38.9	34.7
<b>2013</b>	43.1	47.8	55.9	49.0	45.8
<b>2014</b>	46.0	48.2	57.1	55.6	42.9

## PERCENTAGE SATISFACTORY (Levels 2 and 3)

Test	Year	White	African Amer	Hispanic	Econ Disadv	Special Educ	LEP	At Risk	Migrant	Male	Female	All	District
U.S. HISTORY	2012												
	2013												
	2014		*	*	0.0	0.0	*	0.0		*	*	0.0	0.0
Tests Taken	2012												
	2013												
	2014		5	3	6	8	2	8		4	4	8	226

## NUMBER UNSATISFACTORY (Level 1)

Test	Year	White	African Amer	Hispanic	Econ Disadv	Special Educ	LEP	At Risk	Migrant	Male	Female	All	District
U.S. HISTORY	2012												
	2013												
	2014		*	*	6	8	*	8		*	*	8	226
Tests Taken	2012												
	2013												
	2014		5	3	6	8	2	8		4	4	8	226

## PERCENTAGE ADVANCED (Level 3)

Test	Year	White	African Amer	Hispanic	Econ Disadv	Special Educ	LEP	At Risk	Migrant	Male	Female	All	District
U.S. HISTORY	2012												
	2013												
	2014		*	*	0.0	0.0	*	0.0		*	*	0.0	0.0
Tests Taken	2012												
	2013												
	2014		5	3	6	8	2	8		4	4	8	226

## AVERAGE PERCENTAGE OF ITEMS CORRECT BY REPORTING CATEGORY

U.S. HISTORY	1. History	2. Geography and Culture	3. Government and Citizenship	4. Economics, Science, Technology, and Society
2012				
2013				
2014	40.6	54.2	40.6	38.5



PERCENTAGE AT OR ABOVE THE 40th PERCENTILE on the ITBS

Grade	Year	READING TOTAL (**READING PROFILE TOTAL )				
		At Risk	Not At Risk	All	District	Number Tested (All Students)
K**	2012	54.2	77.7	74.9	62.2	199
	2013	70.0	80.6	79.5	60.8	200
	2014	60.0	89.8	88.8	60.7	152
1	2012	32.3	74.8	67.9	55.4	190
	2013	60.9	75.9	74.1	55.0	189
	2014	31.6	50.4	47.9	47.2	142
2	2012	34.2	67.1	51.2	49.8	164
	2013	36.1	63.0	52.0	50.2	179
	2014	37.5	60.2	51.5	44.4	167
K-2	2012	37.3	74.5	65.5	55.8	354
	2013	50.4	76.4	71.8	56.7	569
	2014	38.7	74.6	69.2	53.1	461
# Tested (GR K-2)	2012	134	419	553	21,034	
	2013	135	635	769	28,878	
	2014	93	520	613	28,063	

Grade	Year	MATHEMATICS TOTAL (**MATHEMATICS )				
		At Risk	Not At Risk	All	District	Number Tested (All Students)
K**	2012	52.1	74.4	64.6	55.1	322
	2013	86.9	73.1	78.6	55.1	304
	2014	90.9	79.7	81.8	55.0	181
1	2012	39.6	81.7	61.9	50.7	291
	2013	49.0	84.4	67.6	52.0	318
	2014	64.3	54.2	57.0	46.0	149
2	2012	59.5	78.8	65.6	57.9	270
	2013	46.9	68.5	54.9	56.2	284
	2014	54.2	81.6	68.3	52.0	199
K-2	2012	51.3	78.0	64.0	54.5	883
	2013	58.4	76.1	67.3	54.4	906
	2014	63.7	72.6	69.8	51.0	529
# Tested (GR K-2)	2012	466	418	883	40,477	
	2013	450	457	906	40,966	
	2014	171	358	529	40,233	

## PERCENTAGE AT OR ABOVE THE 40th PERCENTILE

Grade	Year	White	African Amer	Hispanic	Econ Disadv	Special Educ	LEP	At Risk	Migrant	Male	Female	All	District	Number Tested (All Students)
K**	2012	*	78.6	60.5	73.1	16.7	*	54.2		71.7	78.5	74.9	62.2	199
	2013	*	84.6	69.2	79.3	83.3	*	70.0		80.6	78.4	79.5	60.8	200
	2014		89.4	81.8	88.0	*		*		87.0	90.7	88.8	60.7	152
1	2012	*	75.2	42.9	68.0	*	25.0	32.3		61.2	75.9	67.9	55.4	190
	2013	*	77.6	65.0	73.3	*	42.9	60.9		69.2	80.0	74.1	55.0	189
	2014		47.2	53.8	47.8	*	*	31.6		41.3	55.2	47.9	47.2	142
2	2012		54.7	38.9	51.3	0.0	16.7	34.2		45.2	57.5	51.2	49.8	164
	2013	*	52.6	48.8	51.2	0.0	54.5	36.1		49.5	55.0	52.0	50.2	179
	2014		52.6	40.0	52.1	37.5	*	37.5		50.5	52.7	51.5	44.4	167
1-2	2012	*	65.6	41.0	60.3	18.2	22.2	33.6		54.0	67.1	60.2	52.7	354
	2013	16.7	72.0	61.7	68.5	29.4	42.9	47.0		66.4	72.0	69.1	55.4	569
	2014		63.3	56.4	62.3	41.7	62.5	37.5		59.2	66.7	62.7	50.6	461
# Tested (GR K-2)	2012	1	273	78	335	11	18	110		187	167	354	14,095	
	2013	6	428	133	539	17	21	115		301	268	569	21,640	
	2014		420	39	443	12	8	88		245	216	461	21,214	

\*\*Kindergarten subscore is Reading Profile Total; no Reading Total subscore available.

## NUMBER AT OR ABOVE THE 80th PERCENTILE

Grade	Year	White	African Amer	Hispanic	Econ Disadv	Special Educ	LEP	At Risk	Migrant	Male	Female	All	District	Number Tested (All Students)
K**	2012	*	64	17	77	0	*	9		40	42	82	2,027	199
	2013	*	70	24	89	2	*	12		47	48	95	2,108	200
	2014		84	8	84	*		*		45	47	92	1,938	152
1	2012	*	84	6	88	*	1	5		43	49	92	1,963	190
	2013	*	82	16	93	*	2	9		49	49	98	2,017	189
	2014		23	4	26	*	*	1		13	14	27	1,561	142
2	2012		19	2	18	0	0	3		8	13	21	1,017	164
	2013	*	17	1	17	0	0	3		11	7	18	1,045	179
	2014		47	2	48	2	*	10		25	24	49	950	167
1-2	2012	*	103	8	106	2	1	8		51	62	113	2,981	354
	2013	0	170	41	200	2	2	24		107	105	212	5,171	569
	2014		154	14	158	3	2	14		83	85	168	4,449	461
# Tested (GR K-2)	2012	1	273	78	335	11	18	110		187	167	354	14,095	
	2013	6	428	133	539	17	21	115		301	268	569	21,640	
	2014		420	39	443	12	8	88		245	216	461	21,214	

\*\*Kindergarten subscore is Reading Profile Total; no Reading Total subscore available.

## PERCENTAGE AT OR ABOVE THE 40th PERCENTILE

Grade	Year	White	African Amer	Hispanic	Econ Disadv	Special Educ	LEP	At Risk	Migrant	Male	Female	All	District	Number Tested (All Students)
K**	2012	*	76.4	52.8	63.4	28.6	52.5	52.1		62.6	66.9	64.6	55.1	322
	2013	*	76.2	82.1	78.0	66.7	87.0	86.9		75.5	81.9	78.6	55.1	304
	2014		79.6	89.7	81.1	*	92.9	90.9		80.4	83.3	81.8	55.0	181
1	2012	*	85.9	40.5	61.6	30.8	38.2	39.6		60.1	63.9	61.9	50.7	291
	2013	*	85.0	52.7	67.0	50.0	50.4	49.0		66.5	69.0	67.6	52.0	318
	2014		50.9	73.0	58.3	*	78.6	64.3		51.2	65.1	57.0	46.0	149
2	2012		70.5	61.0	66.3	30.0	60.0	59.5		60.3	71.3	65.6	57.9	270
	2013	*	54.4	55.1	53.8	7.7	53.8	46.9		52.5	57.9	54.9	56.2	284
	2014		73.5	52.1	68.6	37.5	55.3	54.2		67.0	70.0	68.3	52.0	199
K-2	2012	*	77.7	51.2	63.7	30.0	49.7	51.3		61.1	67.3	64.0	54.5	883
	2013	33.3	72.3	63.1	66.5	32.0	61.9	58.4		64.8	70.2	67.3	54.4	906
	2014		69.5	70.2	69.8	41.7	73.4	63.7		66.8	73.4	69.8	51.0	529
# Tested (GR K-2)	2012	2	421	457	848	30	348	466		473	410	883	40,477	
	2013	6	426	472	869	25	352	450		486	420	906	40,966	
	2014		403	124	507	12	94	171		292	237	529	40,233	

\*\*Kindergarten test is Mathematics; no Mathematics Total score available.

## NUMBER AT OR ABOVE THE 80th PERCENTILE

Grade	Year	White	African Amer	Hispanic	Econ Disadv	Special Educ	LEP	At Risk	Migrant	Male	Female	All	District	Number Tested (All Students)
K**	2012	*	46	23	65	1	15	20		38	32	70	2,472	322
	2013	*	49	71	115	1	51	62		64	57	121	2,594	304
	2014		44	25	64	*	19	20		37	32	69	2,598	181
1	2012	*	80	17	90	2	11	15		50	47	97	2,473	291
	2013	*	78	20	92	2	14	17		46	52	98	2,609	318
	2014		23	14	38	*	13	15		22	16	38	2,166	149
2	2012		47	35	79	0	26	40		39	43	82	2,843	270
	2013	*	32	18	46	1	14	18		32	18	50	2,626	284
	2014		64	4	67	1	3	18		34	34	68	2,408	199
K-2	2012	*	173	75	234	3	52	75		127	122	249	7,788	883
	2013	0	159	109	253	4	79	97		142	127	269	7,829	906
	2014		131	43	169	1	35	53		93	82	175	7,172	529
# Tested (GR K-2)	2012	2	421	457	848	30	348	466		473	410	883	40,477	
	2013	6	426	472	869	25	352	450		486	420	906	40,966	
	2014		403	124	507	12	94	171		292	237	529	40,233	

\*\*Kindergarten test is Mathematics; no Mathematics Total score available.

## PERCENTAGE AT OR ABOVE THE 40th PERCENTILE

Grade	Year	White	African Amer	Hispanic	Econ Disadv	Special Educ	LEP	At Risk	Migrant	Male	Female	All	District	Number Tested (All Students)
1	2012	*	84.1	54.6	67.9	40.0	53.3	50.4		65.4	71.0	67.9	62.5	287
	2013	*	81.0	74.4	76.9	*	73.1	73.3		77.3	77.2	77.3	63.6	317
	2014		61.1	77.5	66.9	*	79.3	70.5		63.0	68.4	65.5	58.6	168
2	2012		72.7	74.3	74.3	50.0	75.2	69.9		71.2	76.0	73.5	63.6	268
	2013	*	71.1	69.2	69.4	45.5	69.0	64.2		66.9	73.6	69.9	60.6	282
	2014		74.8	54.2	69.6	37.5	57.9	56.3		72.5	66.7	69.8	59.2	199
1-2	2012	*	78.5	64.0	71.0	44.4	63.4	61.6		68.1	73.5	70.6	63.0	555
	2013	*	76.2	72.0	73.4	50.0	71.2	68.4		72.3	75.6	73.8	62.1	599
	2014		68.6	64.8	68.3	45.5	67.2	60.7		68.2	67.5	67.8	58.9	367
# Tested (GR 1-2)	2012	1	260	292	534	18	227	320		295	260	555	26,880	
	2013	3	282	314	579	16	250	326		329	270	599	27,003	
	2014		277	88	357	11	67	140		201	166	367	26,955	

## NUMBER AT OR ABOVE THE 80th PERCENTILE

Grade	Year	White	African Amer	Hispanic	Econ Disadv	Special Educ	LEP	At Risk	Migrant	Male	Female	All	District	Number Tested (All Students)
1	2012	*	71	34	98	3	27	28		57	48	105	4,060	287
	2013	*	66	45	105	*	35	35		54	57	111	4,150	317
	2014		44	12	58	*	11	13		36	22	58	3,708	168
2	2012		53	46	96	1	36	52		43	56	99	3,820	268
	2013	*	53	28	75	1	24	31		42	39	81	3,436	282
	2014		65	9	73	1	7	19		42	32	74	3,288	199
1-2	2012	*	124	80	194	4	63	80		100	104	204	7,880	555
	2013	*	119	73	180	2	59	66		96	96	192	7,586	599
	2014		109	21	131	1	18	32		78	54	132	6,996	367
# Tested (GR 1-2)	2012	1	260	292	534	18	227	320		295	260	555	26,880	
	2013	3	282	314	579	16	250	326		329	270	599	27,003	
	2014		277	88	357	11	67	140		201	166	367	26,955	

## PERCENTAGE AT OR ABOVE THE 40th PERCENTILE

Grade	Year	White	African Amer	Hispanic	Econ Disadv	Special Educ	LEP	At Risk	Migrant	Male	Female	All	District	Number Tested (All Students)
K	2012			93.3	93.3	*	94.1	94.1		95.6	90.4	93.3	89.9	120
	2013			97.1	97.0		96.9	97.1		94.7	100.0	97.1	89.7	104
	2014			92.9	92.3		92.9	92.9		89.5	100.0	92.9	88.6	28
1	2012			81.7	81.6	66.7	81.4	80.9		73.4	92.2	81.7	89.2	115
	2013			86.7	86.7	*	87.4	86.6		85.3	88.3	86.7	87.6	128
	2014			92.6	92.3	*	92.3	92.3		88.9	100.0	92.6	84.6	27
2	2012			92.3	92.2	*	94.9	92.3		87.3	98.0	92.3	93.3	104
	2013			94.3	94.2	83.3	94.3	94.3		91.5	97.9	94.3	93.6	106
	2014			78.8	81.3		78.8	78.8		82.4	75.0	78.8	91.8	33
K-2	2012			89.1	89.0	77.8	90.0	89.2		85.6	93.4	89.1	90.8	339
	2013			92.3	92.1	71.4	92.4	92.2		90.2	94.8	92.3	90.3	338
	2014			87.5	88.1	*	87.4	87.4		87.0	88.2	87.5	88.2	88
# Tested (GR K-2)	2012			339	337	9	330	332		187	152	339	18,911	
	2013			338	331	7	330	335		184	154	338	18,629	
	2014			88	84	1	87	87		54	34	88	18,008	



## NUMBER AT OR ABOVE THE 80th PERCENTILE

Grade	Year	White	African Amer	Hispanic	Econ Disadv	Special Educ	LEP	At Risk	Migrant	Male	Female	All	District	Number Tested (All Students)
K	2012			74	74	*	73	73		42	32	74	3,679	120
	2013			74	71		68	72		37	37	74	3,798	104
	2014			19	19		19	19		11	8	19	3,313	28
1	2012			28	28	0	28	28		11	17	28	2,437	115
	2013			49	49	*	49	48		27	22	49	2,394	128
	2014			10	10	*	10	10		4	6	10	2,123	27
2	2012			61	61	*	59	61		30	31	61	2,934	104
	2013			57	55	1	57	57		28	29	57	2,899	106
	2014			11	11		11	11		5	6	11	2,596	33
K-2	2012			163	163	1	160	162		83	80	163	9,050	339
	2013			180	175	1	174	177		92	88	180	9,091	338
	2014			40	40	*	40	40		20	20	40	8,032	88
# Tested (GR K-2)	2012			339	337	9	330	332		187	152	339	18,911	
	2013			338	331	7	330	335		184	154	338	18,629	
	2014			88	84	1	87	87		54	34	88	18,008	

## PERCENTAGE DEMONSTRATING IMPROVEMENT

Grade	Level 1 in 2013		Level 2 in 2013		Level 3 in 2013		Levels 1-3 in 2013	
	Number Tested Both Years	Percentage Improved in 2014	Number Tested Both Years	Percentage Improved in 2014	Number Tested Both Years	Percentage Improved in 2014	Number Tested Both Years	Percentage Improved in 2014
9	4	*	0		0		4	*
10	1	*	2	*	0		3	*
11	2	*	4	*	0		6	50.0
12	0		1	*	0		1	*
ALL	7	0.0	7	85.7	0		14	42.9

**PERFORMANCE IN 2014**

Grade 2013-14 (N Rated)	Domain:	Listening		Speaking		Writing		Reading		Composite	
	2014 Level	N	%	N	%	N	%	N	%	N	%
KN (27)	Beginning	27	100.0	27	100.0	27	100.0	27	100.0	27	100.0
	Intermediate	0	0.0	0	0.0	0	0.0	0	0.0	0	0.0
	Advanced	0	0.0	0	0.0	0	0.0	0	0.0	0	0.0
	Advanced High	0	0.0	0	0.0	0	0.0	0	0.0	0	0.0
1 (26)	Beginning	9	34.6	10	38.5	23	88.5	16	61.5	15	57.7
	Intermediate	17	65.4	16	61.5	3	11.5	10	38.5	11	42.3
	Advanced	0	0.0	0	0.0	0	0.0	0	0.0	0	0.0
	Advanced High	0	0.0	0	0.0	0	0.0	0	0.0	0	0.0
2 (37)	Beginning	0	0.0	0	0.0	11	30.6	15	40.5	8	22.2
	Intermediate	24	66.7	22	61.1	24	66.7	14	37.8	19	52.8
	Advanced	11	30.6	13	36.1	0	0.0	7	18.9	9	25.0
	Advanced High	1	2.8	1	2.8	1	2.8	1	2.7	0	0.0
3 (38)	Beginning	0	0.0	1	2.8	2	5.6	14	36.8	2	5.6
	Intermediate	10	27.8	9	25.0	26	72.2	14	36.8	21	58.3
	Advanced	19	52.8	24	66.7	6	16.7	6	15.8	9	25.0
	Advanced High	7	19.4	2	5.6	2	5.6	4	10.5	4	11.1
4 (24)	Beginning	2	9.1	1	4.5	3	13.6	3	12.5	2	9.1
	Intermediate	5	22.7	10	45.5	10	45.5	10	41.7	7	31.8
	Advanced	12	54.5	9	40.9	8	36.4	9	37.5	12	54.5
	Advanced High	3	13.6	2	9.1	1	4.5	2	8.3	1	4.5

**PROGRESSION FROM  
2013 TO 2014**

Number Rated Both Years N (%) Progressed	2014 Level	2013 Level			
		Beg	Int	Adv	Adv High
-	Beginning	-			
	Intermediate	-	-		
	Advanced	-	-	-	
	Advanced High	-	-	-	
23 11 (47.8%)	Beginning	12			
	Intermediate	11	0		
	Advanced	0	0	0	
	Advanced High	0	0	0	
34 20 (58.8%)	Beginning	7			
	Intermediate	12	7		
	Advanced	4	4	0	
	Advanced High	0	0	0	
33 8 (24.2%)	Beginning	1			
	Intermediate	2	19		
	Advanced	0	3	5	
	Advanced High	0	0	3	
21 2 (9.5%)	Beginning	2			
	Intermediate	0	7		
	Advanced	0	1	10	
	Advanced High	0	0	1	

**PERFORMANCE IN 2014**

Grade 2013-14  (N Rated)	Domain:	Listening		Speaking		Writing		Reading		Composite	
	2014 Level	N	%	N	%	N	%	N	%	N	%
5  (37)	Beginning	1	2.7	1	2.7	3	8.1	5	13.5	1	2.7
	Intermediate	1	2.7	2	5.4	2	5.4	7	18.9	7	18.9
	Advanced	8	21.6	10	27.0	19	51.4	14	37.8	13	35.1
	Advanced High	27	73.0	24	64.9	13	35.1	11	29.7	16	43.2
9  (14)	Beginning	1	7.1	2	14.3	2	14.3	3	21.4	2	14.3
	Intermediate	3	21.4	2	14.3	2	14.3	5	35.7	2	14.3
	Advanced	2	14.3	2	14.3	3	21.4	4	28.6	5	35.7
	Advanced High	8	57.1	8	57.1	7	50.0	2	14.3	5	35.7
10  (10)	Beginning	0	0.0	0	0.0	0	0.0	0	0.0	0	0.0
	Intermediate	2	20.0	3	30.0	3	30.0	1	10.0	1	10.0
	Advanced	3	30.0	3	30.0	4	40.0	6	60.0	5	50.0
	Advanced High	5	50.0	4	40.0	3	30.0	3	30.0	4	40.0
11  (9)	Beginning	0	0.0	0	0.0	0	0.0	1	11.1	0	0.0
	Intermediate	0	0.0	0	0.0	1	11.1	5	55.6	1	11.1
	Advanced	2	22.2	4	44.4	4	44.4	3	33.3	6	66.7
	Advanced High	7	77.8	5	55.6	4	44.4	0	0.0	2	22.2
ALL  (227)	Beginning	40	18.0	42	18.9	71	32.0	85	37.4	57	25.7
	Intermediate	62	27.9	64	28.8	73	32.9	67	29.5	70	31.5
	Advanced	57	25.7	67	30.2	46	20.7	52	22.9	62	27.9
	Advanced High	63	28.4	49	22.1	32	14.4	23	10.1	33	14.9

**PROGRESSION FROM  
2013 TO 2014**

Number Rated Both Years  N (%) Progressed	2014 Level	2013 Level			
		Beg	Int	Adv	Adv High
34  26 (76.5%)	Beginning	1			
	Intermediate	3	3		
	Advanced	3	6	4	
	Advanced High	0	4	10	
8  3 (37.5%)	Beginning	0			
	Intermediate	0	1		
	Advanced	0	0	4	
	Advanced High	0	0	3	
8  4 (50.0%)	Beginning	0			
	Intermediate	0	0		
	Advanced	0	0	4	
	Advanced High	0	0	4	
8  7 (87.5%)	Beginning	0			
	Intermediate	1	0		
	Advanced	0	4	1	
	Advanced High	0	0	2	
174  82 (47.1%)	Beginning	23			
	Intermediate	29	38		
	Advanced	7	18	31	
	Advanced High	0	4	24	

■ Indicates students who progressed at least one level from 2013 to 2014.