

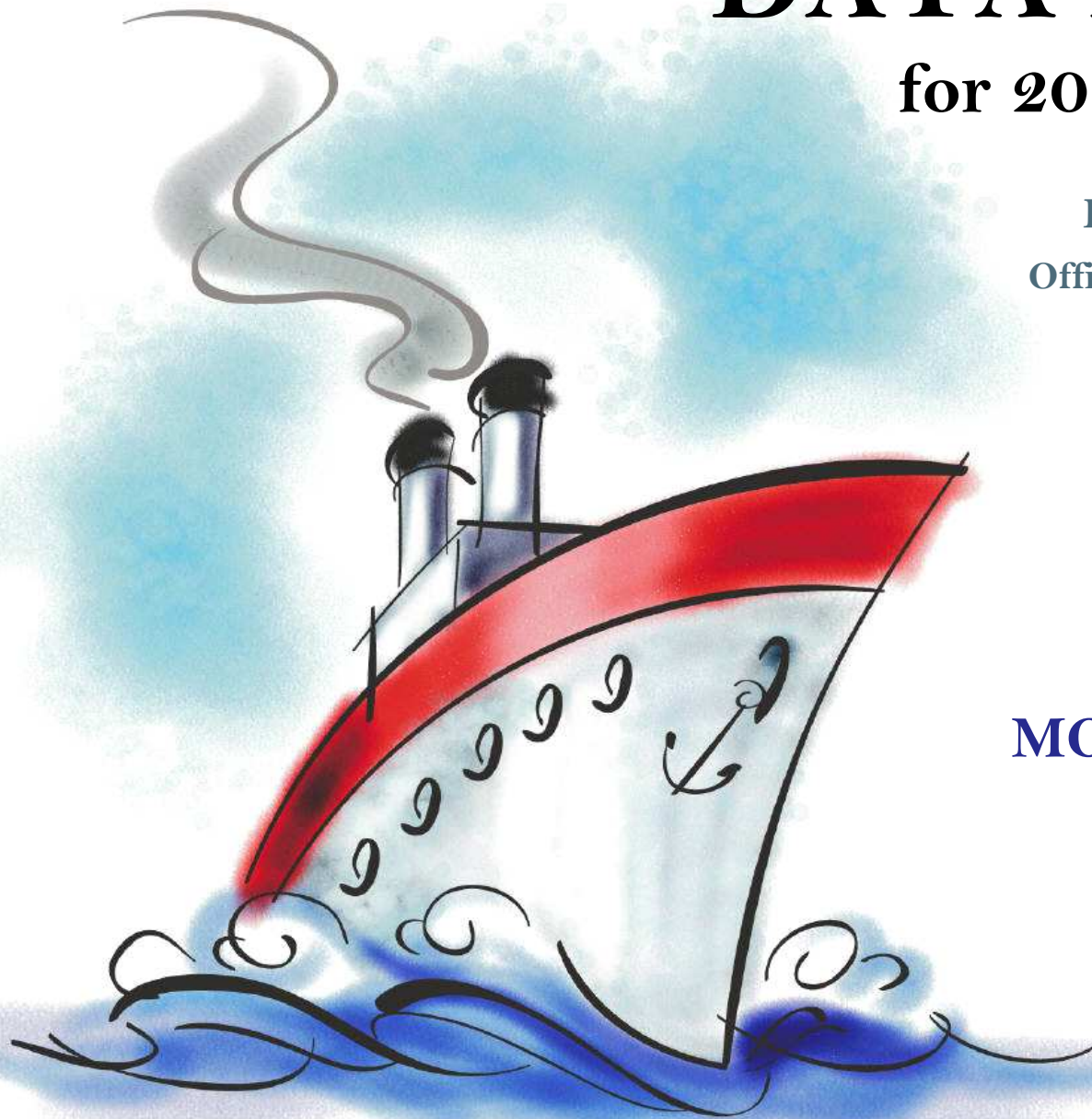
DATA PACKET

for 2014-15 planning

Evaluation & Assessment
Office of Institutional Research
<http://mydata.dallasisd.org>
OIR@dallasisd.org

September 8, 2014

**MOISES E. MOLINA
FEEDER GROUP**



Dallas Independent School District

2. Contents Table of Contents

STUDENTS AND STAFF

- 5. Summary Summary of Student and Teacher Statistics
- 9. Enroll (2) Enrollment Statistics by Select Student Group
- 15. Teachers Teacher Statistics

STAAR (English)

- 16. Reading (3-8) STAAR 3-8 Reading in English
- 28. Writing (3-8) STAAR 3-8 Writing in English
- 43. Math (EOC) STAAR EOC Mathematics
- 54. Science (EOC) ... STAAR EOC Science
- 62. SS (EOC) STAAR EOC Social Studies

STAAR (Spanish)

- 66. Reading (3-8) STAAR 3-8 Reading in Spanish
- 74. Math (3-8) STAAR 3-8 Mathematics in Spanish

STAAR L

- 82. Math (3-8) STAAR L 3-8 Mathematics
- 94. Science (3-8) STAAR L 3-8 Science
- 105. SS (3-8) STAAR L 3-8 Social Studies

STAAR M

- 109. Reading (3-8) STAAR M 3-8 Reading
- 121. Writing (3-8) STAAR M 3-8 Writing
- 136. Math (EOC) STAAR M EOC Mathematics
- 147. Science (EOC) ... STAAR M EOC Science
- 155. SS (EOC) STAAR M EOC Social Studies

ITBS/LOGRAMOS

- 159. Compliance SCE Compliance for At-Risk Students
- 162. Math ITBS Mathematics Subtests

ENGLISH PROFICIENCY

- 168. WMLS Woodcock-Muñoz Language Survey

3. Notes Notes and Data Descriptions

- 6. Enroll (1) Enrollment Statistics by Ethnicity
- 12. Attendance Student Attendance Statistics

- 24. Reading (EOC) .. STAAR EOC Reading
- 35. Math (3-8) STAAR 3-8 Mathematics in English
- 47. Science (3-8) STAAR 3-8 Science in English
- 58. SS (3-8) STAAR 3-8 Social Studies in English

- 70. Writing (3-8) STAAR 3-8 Writing in Spanish
- 78. Science (3-8) STAAR 3-8 Science in Spanish

- 90. Math (EOC) STAAR L EOC Mathematics
- 101. Science (EOC) ... STAAR L EOC Science

- 117. Reading (EOC) .. STAAR M EOC Reading
- 128. Math (3-8) STAAR M 3-8 Mathematics
- 140. Science (3-8) STAAR M 3-8 Science
- 151. SS (3-8) STAAR M 3-8 Social Studies

- 160. Reading ITBS Reading Subtests
- 166. Reading Logramos Reading Subtests

- 169. TELPAS Texas English Language Proficiency Assessment System

2013-14 SCHOOL SUMMARY

- Student percentages are computed as the percentage of total student enrollment.
- Additional statistics are available in ENROLLMENT and TEACHER reports.
- Race/ethnic categories are based on the newest federal standards for ethnicity and race reporting, though some categories have been combined because of small group sizes. Students reporting their ethnicity as “Hispanic” are not counted in any race category.
- “Economically disadvantaged” students are those who qualify for free or reduced-price lunch through the federal government's program.
- Teacher demographics and assignments are from the district's Public Education Information Management System (PEIMS) submission to the TEA.

ENROLLMENT

- Statistics are based on the school's enrollment at the end of the fifth six-weeks grading period.
- “Economically disadvantaged” students are those receiving free or reduced-price lunches.
- “New” students were new to the district in 2013-14. They are counted as new if not enrolled in a district campus before the last day of the 2012-13 school year.
- The “retention rate” is the percentage of students in the same grade at the end of the fifth six-weeks grading period for both 2012-13 and 2013-14.

ATTENDANCE

- Statistics are based on student attendance through the end of the sixth six-weeks grading period (the end of the school year).
- “Average daily membership” is the total number of school days students were ENROLLED divided by the number of school days in the year.
- The “average daily attendance” number (N) is the total number of school days students were IN ATTENDANCE divided by the number of school days in the year. The “average daily attendance” percentage (%) is the average attendance rate. For each student, the number of days attended is divided by the number of days enrolled. This rate is then averaged across students.
- The number (N) of “yearly transactions” is the total number of transfer and withdrawal transactions in the school year. The percentage (%) is the number of transactions divided by “average daily membership,” which gives (on average) the percentage of the membership associated with a transaction.
- “Continuously enrolled” students are enrolled and in attendance for a minimum number of instructional days in at least one course at the school between the beginning of the school year and the first day of the main STAAR testing period. The minimum number varies depending on the school year's calendar, but is typically around 130 days.
- The “stability rate” is the number of continuously enrolled students divided by “average daily membership.”

TEACHERS

- Teacher demographics and assignments are from the district's Public Education Information Management System (PEIMS) submission to the TEA.
- Teacher absences counted towards the average DO NOT include vacation days (coded as VAC in personnel database).
- Retention rate for a school year is computed with numerator “# of teachers assigned to the school both that year and the year prior” and denominator “# of teachers assigned to the school for the prior year.” That is, the retention rate is the percentage of the prior year's teachers who continued at the school.

STAAR, STAAR L, and STAAR M

- Cells marked with an asterisk (*) indicate five or fewer students were tested. Blank cells indicate no students were tested.
- Student group assignments are from the district's Public Education Information Management System (PEIMS) submission to the TEA.
- STAAR statistics are based on results from standard STAAR only. STAAR L and STAAR M statistics are computed separately, following TEA reporting practice.
- “Percentage Satisfactory” is the percentage of students achieving Level 2 (Satisfactory) or Level 3 (Advanced).
- Statistics by reporting category are averages for all students (across student groups and genders).
- An “average percentage correct” is computed as follows: for each student, divide the number of items correctly answered by the total number of items in the test section, then average the resulting percentages across all students. For short answers on EOC English tests, an “average rating” is presented; STAAR EOC short answers are rated on a scale of 0 to 3. For written compositions on writing tests, “average score points” is presented. Additional details provided in report footnotes.
- Reading and mathematics statistics for SSI grades 5 and 8 are based on scores cumulative through the second administration. EOC statistics are based on first administration scores from the fall and spring administrations.
- Beginning in 2014, EOC Reading and EOC Writing tests were replaced with EOC English tests.

SCE COMPLIANCE and ITBS / ITED / LOGRAMOS

- Cells marked with an asterisk (*) indicate five or fewer students were tested. Blank cells indicate no students were tested.
- Student group assignments are based on demographic data in the Dallas ISD student database.
- Kindergarten ITBS reading statistics are based on the Reading Profile Total summary score. All other grades' ITBS reading statistics, and Logramos reading statistics for all grades, are based on the Reading Total summary score. (Reading Total values not available with use of the ITBS form administered in kindergarten.) “Number tested” statistics include kindergarten.
- Kindergarten ITBS mathematics statistics are based on the Mathematics subtest score. All other grades' statistics are based on the Mathematics Total summary score. (Mathematics Total values not available with use of the ITBS form administered in kindergarten.) “Number tested” statistics include kindergarten.
- Mathematics Total summary scores are combinations of the Mathematics Concepts, Problems, and Computation subtest results. For schools that did not administer Mathematics Concepts or Mathematics Problems subtests, Mathematics Computation statistics are provided separately.

TELPAS

- Students are counted as having tested if any one of the four domains is rated. Because a TELPAS composite rating is not assigned to a student unless all four domains are rated, the number of TELPAS composite ratings may be smaller than the number tested.
- If a student's composite rating did not increase at least one level from 2013 to 2014, the TEA did not report the 2013 composite rating.
- If a student is rated as advanced high in 2014, the TEA does not differentiate between the advanced and advanced high levels from 2013.

STUDENT ENROLLMENT

Grade	Enrollment
PK	314
KN	475
1	539
2	490
3	557
4	511
5	479
6	444
7	479
8	467
9	538
10	470
11	479
12	493
ALL	6,735

STUDENT AND TEACHER RACE/ETHNICITY

Ethnicity/Race	Students		Teachers	
	Number	Percent	Number	Percent
Black/African American	309	4.6	95	23.8
American Indian/Alaska Native	11	0.2	*	*
Asian/Hawaiian/Pacific Islander	15	0.2	*	*
Hispanic	6,330	94.0	137	34.3
White	53	0.8	147	36.8
Multiple	15	0.2	6	1.5
Other* (teachers only)	—	—	14	3.5
Not reported (students only)	1	0.0	—	—

*For teachers, "Other" category includes American Indian/Alaska Native and Asian/Hawaiian/Pacific Islander.

SELECT STUDENT GROUP ENROLLMENT

Group	Number	Percent
At-Risk	5,405	80.3
Economically disadvantaged	6,270	93.1
Limited English proficient (LEP)	2,907	43.2
Special education	497	7.4
Talented and Gifted (TAG)	694	10.3

Grade	Year	Enrollment	African American		American Indian		Asian		Hispanic		White		Multiple category	
			N	%	N	%	N	%	N	%	N	%	N	%
PK	2012	244	6	2.5	0	0.0	2	0.8	236	96.7	0	0.0	0	0.0
	2013	279	9	3.2	0	0.0	0	0.0	267	95.7	2	0.7	1	0.4
	2014	314	11	3.5	0	0.0	1	0.3	299	95.2	2	0.6	0	0.0
KN	2012	470	29	6.2	2	0.4	0	0.0	431	91.7	8	1.7	0	0.0
	2013	512	34	6.6	0	0.0	1	0.2	470	91.8	6	1.2	1	0.2
	2014	475	34	7.2	0	0.0	1	0.2	433	91.2	5	1.1	2	0.4
1	2012	593	20	3.4	0	0.0	0	0.0	561	94.6	10	1.7	2	0.3
	2013	506	27	5.3	3	0.6	1	0.2	470	92.9	5	1.0	0	0.0
	2014	539	34	6.3	0	0.0	1	0.2	499	92.6	5	0.9	0	0.0
2	2012	547	23	4.2	0	0.0	1	0.2	519	94.9	4	0.7	0	0.0
	2013	565	33	5.8	0	0.0	0	0.0	521	92.2	10	1.8	1	0.2
	2014	490	23	4.7	3	0.6	1	0.2	456	93.1	7	1.4	0	0.0
3	2012	555	32	5.8	0	0.0	0	0.0	519	93.5	2	0.4	2	0.4
	2013	519	28	5.4	0	0.0	1	0.2	484	93.3	5	1.0	0	0.0
	2014	557	33	5.9	0	0.0	0	0.0	517	92.8	6	1.1	1	0.2
4	2012	510	19	3.7	0	0.0	2	0.4	481	94.3	8	1.6	0	0.0
	2013	480	23	4.8	0	0.0	0	0.0	452	94.2	2	0.4	3	0.6
	2014	511	31	6.1	0	0.0	1	0.2	477	93.3	2	0.4	0	0.0
5	2012	509	20	3.9	1	0.2	2	0.4	482	94.7	3	0.6	1	0.2
	2013	491	18	3.7	0	0.0	2	0.4	462	94.1	9	1.8	0	0.0
	2014	479	30	6.3	0	0.0	0	0.0	444	92.7	3	0.6	2	0.4
PK-5	2012	3,428	149	4.3	3	0.1	7	0.2	3,229	94.2	35	1.0	5	0.1
	2013	3,352	172	5.1	3	0.1	5	0.1	3,126	93.3	39	1.2	6	0.2
	2014	3,365	196	5.8	3	0.1	5	0.1	3,125	92.9	30	0.9	5	0.1

Grade	Year	Enrollment	African American		American Indian		Asian		Hispanic		White		Multiple category	
			N	%	N	%	N	%	N	%	N	%	N	%
6	2012	472	13	2.8	1	0.2	2	0.4	453	96.0	3	0.6	0	0.0
	2013	463	25	5.4	1	0.2	2	0.4	433	93.5	2	0.4	0	0.0
	2014	444	20	4.5	0	0.0	3	0.7	417	93.9	4	0.9	0	0.0
7	2012	449	21	4.7	0	0.0	0	0.0	418	93.1	9	2.0	1	0.2
	2013	457	13	2.8	1	0.2	2	0.4	439	96.1	2	0.4	0	0.0
	2014	479	27	5.6	1	0.2	2	0.4	448	93.5	1	0.2	0	0.0
8	2012	426	16	3.8	1	0.2	2	0.5	404	94.8	1	0.2	1	0.2
	2013	431	20	4.6	0	0.0	0	0.0	403	93.5	6	1.4	2	0.5
	2014	467	15	3.2	1	0.2	1	0.2	447	95.7	3	0.6	0	0.0
6-8	2012	1,347	50	3.7	2	0.1	4	0.3	1,275	94.7	13	1.0	2	0.1
	2013	1,351	58	4.3	2	0.1	4	0.3	1,275	94.4	10	0.7	2	0.1
	2014	1,390	62	4.5	2	0.1	6	0.4	1,312	94.4	8	0.6	0	0.0

Grade	Year	Enrollment	African American		American Indian		Asian		Hispanic		White		Multiple category	
			N	%	N	%	N	%	N	%	N	%	N	%
9	2012	557	21	3.8	0	0.0	1	0.2	527	94.6	4	0.7	3	0.5
	2013	510	20	3.9	1	0.2	1	0.2	485	95.1	2	0.4	1	0.2
	2014	538	13	2.4	0	0.0	1	0.2	515	95.7	7	1.3	2	0.4
10	2012	483	14	2.9	5	1.0	2	0.4	455	94.2	2	0.4	5	1.0
	2013	512	16	3.1	0	0.0	1	0.2	487	95.1	3	0.6	4	0.8
	2014	470	15	3.2	1	0.2	1	0.2	450	95.7	2	0.4	1	0.2
11	2012	463	15	3.2	0	0.0	4	0.9	441	95.2	3	0.6	0	0.0
	2013	475	12	2.5	5	1.1	1	0.2	452	95.2	2	0.4	3	0.6
	2014	479	11	2.3	0	0.0	1	0.2	458	95.6	4	0.8	4	0.8
12	2012	403	13	3.2	0	0.0	0	0.0	384	95.3	6	1.5	0	0.0
	2013	456	15	3.3	0	0.0	3	0.7	435	95.4	3	0.7	0	0.0
	2014	493	12	2.4	5	1.0	1	0.2	470	95.3	2	0.4	3	0.6
9-12	2012	1,906	63	3.3	5	0.3	7	0.4	1,807	94.8	15	0.8	8	0.4
	2013	1,953	63	3.2	6	0.3	6	0.3	1,859	95.2	10	0.5	8	0.4
	2014	1,980	51	2.6	6	0.3	4	0.2	1,893	95.6	15	0.8	10	0.5
ALL	2012	6,681	262	3.9	10	0.1	18	0.3	6,311	94.5	63	0.9	15	0.2
	2013	6,656	293	4.4	11	0.2	15	0.2	6,260	94.1	59	0.9	16	0.2
	2014	6,735	309	4.6	11	0.2	15	0.2	6,330	94.0	53	0.8	15	0.2

Grade	Year	Enrollment	Economically Disadvantaged		LEP		Special Education		At Risk		TAG		New (to District)		Gender		Retention Rate (%)
			N	%	N	%	N	%	N	%	N	%	N	%	% Male	% Female	
PK	2012	244	239	98.0	177	72.5	15	6.1	189	77.5	0	0.0	235	96.3	55.7	44.3	1.6
	2013	279	272	97.5	194	69.5	20	7.2	197	70.6	0	0.0	266	95.3	52.0	48.0	1.8
	2014	314	294	93.6	197	62.7	20	6.4	217	69.1	0	0.0	303	96.5	44.9	55.1	0.0
KN	2012	470	447	95.1	277	58.9	30	6.4	295	62.8	9	1.9	211	44.9	53.2	46.8	1.1
	2013	512	493	96.3	279	54.5	31	6.1	302	59.0	10	2.0	226	44.1	56.1	43.9	0.2
	2014	475	442	93.1	260	54.7	29	6.1	278	58.5	20	4.2	168	35.4	52.6	47.4	0.8
1	2012	593	572	96.5	365	61.6	33	5.6	415	70.0	38	6.4	43	7.3	49.6	50.4	6.4
	2013	506	492	97.2	298	58.9	40	7.9	336	66.4	28	5.5	35	6.9	55.5	44.5	8.9
	2014	539	513	95.2	300	55.7	39	7.2	335	62.2	38	7.1	31	5.8	56.2	43.8	6.3
2	2012	547	520	95.1	331	60.5	39	7.1	464	84.8	54	9.9	34	6.2	52.1	47.9	5.3
	2013	565	540	95.6	331	58.6	49	8.7	463	81.9	45	8.0	27	4.8	50.3	49.7	4.1
	2014	490	460	93.9	287	58.6	45	9.2	403	82.2	40	8.2	28	5.7	55.3	44.7	2.9
3	2012	555	533	96.0	334	60.2	42	7.6	488	87.9	71	12.8	40	7.2	51.2	48.8	5.9
	2013	519	498	96.0	324	62.4	43	8.3	461	88.8	59	11.4	32	6.2	52.8	47.2	6.2
	2014	557	530	95.2	336	60.3	44	7.9	476	85.5	61	11.0	38	6.8	49.2	50.8	3.9
4	2012	510	494	96.9	300	58.8	35	6.9	442	86.7	97	19.0	37	7.3	49.6	50.4	2.5
	2013	480	456	95.0	284	59.2	41	8.5	412	85.8	64	13.3	18	3.8	51.7	48.3	1.5
	2014	511	483	94.5	317	62.0	39	7.6	465	91.0	73	14.3	30	5.9	53.2	46.8	0.8
5	2012	509	487	95.7	232	45.6	31	6.1	425	83.5	90	17.7	29	5.7	47.7	52.3	4.9
	2013	491	474	96.5	266	54.2	33	6.7	425	86.6	99	20.2	18	3.7	50.1	49.9	0.8
	2014	479	451	94.2	260	54.3	37	7.7	433	90.4	68	14.2	20	4.2	51.8	48.2	1.9
PK-5	2012	3,428	3,292	96.0	2,016	58.8	225	6.6	2,718	79.3	359	10.5	629	18.3	50.9	49.1	4.3
	2013	3,352	3,225	96.2	1,976	58.9	257	7.7	2,596	77.4	305	9.1	622	18.6	52.7	47.3	3.5
	2014	3,365	3,173	94.3	1,957	58.2	253	7.5	2,607	77.5	300	8.9	618	18.4	52.3	47.7	2.6

Grade	Year	Enrollment	Economically Disadvantaged		LEP		Special Education		At Risk		TAG		New (to District)		Gender		Retention Rate (%)
			N	%	N	%	N	%	N	%	N	%	N	%	% Male	% Female	
6	2012	472	459	97.2	207	43.9	25	5.3	365	77.3	78	16.5	33	7.0	48.1	51.9	0.4
	2013	463	442	95.5	209	45.1	29	6.3	383	82.7	63	13.6	27	5.8	49.0	51.0	0.6
	2014	444	421	94.8	251	56.5	33	7.4	401	90.3	60	13.5	19	4.3	52.7	47.3	0.7
7	2012	449	419	93.3	166	37.0	37	8.2	312	69.5	49	10.9	30	6.7	47.9	52.1	0.4
	2013	457	432	94.5	175	38.3	25	5.5	353	77.2	67	14.7	18	3.9	48.1	51.9	1.3
	2014	479	448	93.5	196	40.9	29	6.1	434	90.6	60	12.5	20	4.2	49.7	50.3	1.5
8	2012	426	389	91.3	92	21.6	46	10.8	280	65.7	65	15.3	29	6.8	50.2	49.8	0.5
	2013	431	410	95.1	154	35.7	36	8.4	315	73.1	50	11.6	17	3.9	45.7	54.3	0.2
	2014	467	439	94.0	119	25.5	27	5.8	384	82.2	68	14.6	27	5.8	48.6	51.4	0.0
6-8	2012	1,347	1,267	94.1	465	34.5	108	8.0	957	71.0	192	14.3	92	6.8	48.7	51.3	0.4
	2013	1,351	1,284	95.0	538	39.8	90	6.7	1,051	77.8	180	13.3	62	4.6	47.7	52.3	0.7
	2014	1,390	1,308	94.1	566	40.7	89	6.4	1,219	87.7	188	13.5	66	4.7	50.3	49.7	0.7

Grade	Year	Enrollment	Economically Disadvantaged		LEP		Special Education		At Risk		TAG		New (to District)		Gender		Retention Rate (%)
			N	%	N	%	N	%	N	%	N	%	N	%	% Male	% Female	
9	2012	557	495	88.9	121	21.7	38	6.8	368	66.1	57	10.2	61	11.0	47.9	52.1	4.7
	2013	510	463	90.8	112	22.0	56	11.0	348	68.2	60	11.8	48	9.4	52.4	47.6	3.9
	2014	538	485	90.1	169	31.4	46	8.6	433	80.5	64	11.9	58	10.8	45.7	54.3	1.9
10	2012	483	435	90.1	62	12.8	25	5.2	320	66.3	34	7.0	35	7.2	50.3	49.7	1.2
	2013	512	452	88.3	94	18.4	31	6.1	340	66.4	55	10.7	24	4.7	43.9	56.1	1.4
	2014	470	421	89.6	94	20.0	41	8.7	391	83.2	59	12.6	16	3.4	52.3	47.7	0.6
11	2012	463	398	86.0	68	14.7	27	5.8	323	69.8	40	8.6	29	6.3	54.0	46.0	0.6
	2013	475	424	89.3	41	8.6	23	4.8	327	68.8	36	7.6	18	3.8	49.1	50.9	0.0
	2014	479	436	91.0	88	18.4	31	6.5	381	79.5	52	10.9	16	3.3	43.6	56.4	0.4
12	2012	403	362	89.8	60	14.9	40	9.9	297	73.7	38	9.4	5	1.2	50.6	49.4	0.0
	2013	456	404	88.6	52	11.4	43	9.4	328	71.9	35	7.7	10	2.2	54.4	45.6	3.5
	2014	493	447	90.7	33	6.7	37	7.5	374	75.9	31	6.3	10	2.0	48.3	51.7	3.9
9-12	2012	1,906	1,690	88.7	311	16.3	130	6.8	1,308	68.6	169	8.9	130	6.8	50.6	49.4	1.8
	2013	1,953	1,743	89.2	299	15.3	153	7.8	1,343	68.8	186	9.5	100	5.1	49.8	50.2	2.2
	2014	1,980	1,789	90.4	384	19.4	155	7.8	1,579	79.7	206	10.4	100	5.1	47.4	52.6	1.7
ALL	2012	6,681	6,249	93.5	2,792	41.8	463	6.9	4,983	74.6	720	10.8	851	12.7	50.4	49.6	2.8
	2013	6,656	6,252	93.9	2,813	42.3	500	7.5	4,990	75.0	671	10.1	784	11.8	50.8	49.2	2.6
	2014	6,735	6,270	93.1	2,907	43.2	497	7.4	5,405	80.3	694	10.3	784	11.6	50.4	49.6	1.9

Grade	Year	Average Daily Membership		Average Daily Attendance				Yearly Transactions			Continuously Enrolled		Stability Rate	
		N	District	N	%	District N	District %	N	%	District %	N	District	%	District
KN	2012	468	13,633	449	96.0	13,086	96.0	59	12.6	19.9	418	11,731	89.3	86.0
	2013	507	14,067	485	95.6	13,411	95.3	72	14.2	20.0	458	12,178	90.3	86.6
	2014	474	13,618	455	96.1	13,058	95.9	67	14.1	19.8	425	11,271	89.7	82.8
1	2012	591	14,026	571	96.7	13,533	96.5	75	12.7	18.3	539	12,292	91.3	87.6
	2013	501	14,140	480	95.9	13,578	96.0	72	14.4	18.7	454	12,528	90.6	88.6
	2014	539	14,262	519	96.3	13,732	96.3	67	12.4	19.2	485	12,149	90.0	85.2
2	2012	546	13,338	530	96.9	12,932	97.0	57	10.4	16.8	498	11,883	91.2	89.1
	2013	562	13,555	542	96.4	13,077	96.5	73	13.0	17.1	522	12,206	92.8	90.0
	2014	490	13,652	473	96.6	13,209	96.8	66	13.5	17.0	443	11,868	90.4	86.9
3	2012	553	12,874	537	97.2	12,508	97.2	45	8.1	15.5	525	11,592	95.0	90.0
	2013	517	12,879	500	96.9	12,466	96.8	54	10.5	15.9	487	11,710	94.3	90.9
	2014	557	13,159	542	97.2	12,763	97.0	72	12.9	17.3	512	11,491	91.8	87.3
4	2012	500	12,493	487	97.4	12,139	97.2	43	8.6	16.6	474	11,218	94.8	89.8
	2013	477	12,406	464	97.2	12,029	97.0	52	10.9	16.5	456	11,339	95.6	91.4
	2014	508	12,543	493	97.1	12,180	97.1	51	10.0	16.3	473	11,075	93.1	88.3
5	2012	504	12,562	492	97.5	12,220	97.3	17	3.4	5.3	478	11,364	94.8	90.5
	2013	492	12,053	478	97.1	11,696	97.0	19	3.9	6.2	467	11,075	94.9	91.9
	2014	478	12,130	466	97.5	11,795	97.2	19	4.0	5.4	446	10,790	93.3	89.0
KN-5	2012	3,162	78,926	3,066	97.0	76,419	96.8	296	9.4	15.5	2,932	70,080	92.7	88.8
	2013	3,057	79,100	2,950	96.5	76,255	96.4	342	11.2	16.0	2,844	71,036	93.0	89.8
	2014	3,046	79,365	2,949	96.8	76,736	96.7	342	11.2	16.0	2,784	68,644	91.4	86.5

Grade	Year	Average Daily Membership		Average Daily Attendance				Yearly Transactions			Continuously Enrolled		Stability Rate	
		N	District	N	%	District N	District %	N	%	District %	N	District	%	District
6	2012	465	10,683	452	97.1	10,315	96.6	15	3.2	17.6	441	9,420	94.8	88.2
	2013	458	11,463	443	96.7	11,062	96.5	54	11.8	21.1	429	10,320	93.6	90.0
	2014	439	10,808	426	96.9	10,413	96.3	61	13.9	20.0	405	9,554	92.2	88.4
7	2012	445	10,204	429	96.4	9,727	95.3	81	18.2	23.8	402	8,576	90.3	84.0
	2013	456	10,542	441	96.7	10,116	96.0	50	11.0	24.5	422	9,357	92.5	88.8
	2014	483	11,195	467	96.5	10,729	95.8	56	11.6	22.1	449	9,852	92.9	88.0
8	2012	425	10,369	408	95.9	9,838	94.9	40	9.4	15.5	378	8,711	88.9	84.0
	2013	434	9,955	413	95.2	9,486	95.3	49	11.3	17.6	392	8,664	90.4	87.0
	2014	466	10,449	449	96.3	9,970	95.4	21	4.5	13.1	432	9,097	92.7	87.1
6-8	2012	1,335	31,256	1,289	96.5	29,880	95.6	136	10.2	18.9	1,221	26,707	91.4	85.4
	2013	1,348	31,960	1,297	96.2	30,665	96.0	153	11.4	21.1	1,243	28,341	92.2	88.7
	2014	1,389	32,451	1,341	96.5	31,112	95.9	138	9.9	18.5	1,286	28,503	92.6	87.8

Grade	Year	Average Daily Membership		Average Daily Attendance				Yearly Transactions			Continuously Enrolled		Stability Rate	
		N	District	N	%	District N	District %	N	%	District %	N	District	%	District
9	2012	570	10,922	545	95.6	10,196	93.3	92	16.1	27.8	506	8,726	88.8	79.9
	2013	524	11,153	504	96.2	10,499	94.1	53	10.1	28.3	474	9,388	90.5	84.2
	2014	552	10,850	527	95.5	10,242	94.4	55	10.0	28.4	498	9,091	90.2	83.8
10	2012	488	9,007	466	95.4	8,431	93.6	56	11.5	20.6	436	7,332	89.3	81.4
	2013	517	9,331	497	96.1	8,812	94.4	40	7.7	20.5	479	8,042	92.6	86.2
	2014	477	9,898	456	95.6	9,367	94.6	43	9.0	20.3	435	8,628	91.2	87.2
11	2012	481	8,913	456	94.9	8,306	93.2	48	10.0	15.9	424	7,319	88.2	82.1
	2013	491	8,457	473	96.3	7,949	94.0	23	4.7	18.9	456	7,295	92.9	86.3
	2014	490	8,467	465	95.0	8,005	94.5	31	6.3	18.1	453	7,476	92.5	88.3
12	2012	406	8,178	386	95.0	7,571	92.6	22	5.4	12.6	373	6,742	91.9	82.4
	2013	449	8,199	424	94.4	7,661	93.4	31	6.9	14.9	407	7,269	90.6	88.7
	2014	490	7,886	464	94.6	7,407	93.9	25	5.1	15.2	470	7,027	95.9	89.1
9-12	2012	1,945	37,021	1,853	95.3	34,504	93.2	218	11.2	19.8	1,739	30,119	89.4	81.4
	2013	1,981	37,140	1,898	95.8	34,922	94.0	147	7.4	21.2	1,816	31,994	91.7	86.1
	2014	2,009	37,101	1,912	95.2	35,021	94.4	154	7.7	21.1	1,856	32,222	92.4	86.8

Teachers: 399

DISTRIBUTIONS

Ethnicity/Race	Number	Percentage
African American	95	23.8
Hispanic	137	34.3
White	147	36.8
Multiple	6	1.5
Other	14	3.5

Gender	Number	Percentage
Female	280	70.2
Male	119	29.8

ATTENDANCE / RETENTION

	Average Absences	Retention Rate
2011-12	6.6	—
2012-13	7.3	73.3
2013-14	6.6	77.5

YEARS EXPERIENCE

Years	Number	Percentage
Beginning (0)	52	13.0
1	45	11.3
2	15	3.8
3	19	4.8
4	17	4.3
5	24	6.0
1-3	79	19.8
More than 3	268	67.2
1 - 5	120	30.1
6 - 10	85	21.3
11 - 20	101	25.3
More than 20	41	10.3

PERCENTAGE SATISFACTORY (Levels 2 or 3)

Grade	Year	White	African Amer	Hispanic	Econ Disadv	Special Educ	LEP	At Risk	Migrant	Male	Female	All	District	Number Tested (All Students)
3	2012	*	48.3	70.6	66.8	50.0	61.2	57.1		66.7	70.3	68.3	63.6	246
	2013	*	46.4	72.7	68.1	37.5	71.4	62.1		66.1	73.6	69.6	67.8	230
	2014	*	51.4	65.1	63.2	60.0	57.1	50.9		64.4	61.9	63.2	61.7	269
4	2012	71.4	56.3	65.1	63.1	37.5	48.8	40.2		64.2	65.8	65.0	64.3	234
	2013	*	45.0	66.8	65.1	33.3	64.8	52.7		66.1	64.3	65.2	62.3	233
	2014	*	17.9	63.6	56.6	0.0	63.3	41.6		54.6	62.6	58.2	59.4	237
5	2012	*	61.1	66.8	65.8	22.2	58.3	54.9		61.4	72.4	67.2	68.0	332
	2013	83.3	76.5	82.2	81.1	77.8	85.6	74.3		83.8	80.0	81.9	81.5	293
	2014	*	63.0	81.5	79.3	57.1	84.3	73.8		79.6	80.0	79.8	78.5	292
3-5	2012	81.8	54.0	67.4	65.3	37.9	57.2	52.5		63.9	69.9	66.9	65.5	812
	2013	72.7	53.8	74.7	72.3	50.0	76.9	65.0		72.8	73.3	73.0	71.1	756
	2014	60.0	44.4	70.8	67.1	41.9	71.9	57.3		66.7	68.9	67.8	66.7	798

NUMBER TESTED IN GRADES 3-5													
2012	11	63	730	756	29	229	501		413	399	812	22,173	
2013	11	65	675	708	26	221	423		393	363	756	21,619	
2014	10	90	695	723	31	224	522		412	386	798	21,304	

PERCENTAGE SATISFACTORY (Levels 2 or 3)

Grade	Year	White	African Amer	Hispanic	Econ Disadv	Special Educ	LEP	At Risk	Migrant	Male	Female	All	District	Number Tested (All Students)
6	2012	*	27.3	63.7	62.2	27.3	55.8	53.1		59.5	65.3	62.5	63.5	459
	2013	*	58.3	51.2	50.8	15.4	39.7	38.8	*	53.4	50.4	51.9	57.7	449
	2014	*	44.4	64.1	63.7	50.0	57.6	56.2		59.9	67.3	63.5	63.1	422
7	2012	62.5	66.7	61.3	61.7	27.3	40.3	46.7		60.1	62.6	61.4	67.5	420
	2013	*	90.0	69.0	69.8	63.6	57.4	55.8		64.0	75.2	69.8	67.3	437
	2014	*	60.0	57.9	58.3	25.0	44.7	47.2		58.5	58.1	58.3	60.5	458
8	2012	*	60.0	66.8	66.7	25.9	28.6	45.7		63.7	69.3	66.5	71.3	409
	2013	*	83.3	84.8	84.3	58.3	74.5	77.9		81.0	88.2	85.0	82.7	412
	2014	*	100.0	85.5	86.0	81.8	63.2	78.6		83.9	88.0	86.0	81.5	451
6-8	2012	58.3	54.5	63.9	63.4	26.5	46.3	49.1		61.1	65.6	63.4	67.4	1,288
	2013	88.9	73.1	67.9	67.8	44.4	55.8	56.9	*	65.3	71.3	68.4	68.6	1,298
	2014	85.7	64.3	69.4	69.7	55.2	54.2	59.6		67.3	71.4	69.3	68.2	1,331

NUMBER TESTED IN GRADES 6-8													
2012	12	44	1,225	1,191	49	482	780		622	666	1,288	29,211	
2013	9	52	1,230	1,229	36	541	809	1	616	682	1,298	29,692	
2014	7	56	1,261	1,251	29	542	952		663	668	1,331	30,015	

NUMBER UNSATISFACTORY (Level 1)

Grade	Year	White	African Amer	Hispanic	Econ Disadv	Special Educ	LEP	At Risk	Migrant	Male	Female	All	District	Number Tested (All Students)
3	2012	*	15	63	75	6	19	73		45	33	78	2,466	246
	2013	*	15	54	68	5	16	61		42	28	70	2,181	230
	2014	*	17	80	92	6	24	82		48	51	99	2,649	269
4	2012	2	7	73	80	5	21	64		43	39	82	2,529	234
	2013	*	11	69	75	6	19	43		41	40	81	2,581	233
	2014	*	23	75	92	9	22	87		59	40	99	2,858	237
5	2012	*	7	102	107	7	58	101		61	48	109	2,665	332
	2013	1	4	48	53	2	16	44		24	29	53	1,484	293
	2014	*	10	48	54	3	17	54		30	29	59	1,582	292
3-5	2012	2	29	238	262	18	98	238		149	120	269	7,660	812
	2013	3	30	171	196	13	51	148		107	97	204	6,246	756
	2014	4	50	203	238	18	63	223		137	120	257	7,089	798

NUMBER TESTED IN GRADES 3-5													
2012	11	63	730	756	29	229	501		413	399	812	22,173	
2013	11	65	675	708	26	221	423		393	363	756	21,619	
2014	10	90	695	723	31	224	522		412	386	798	21,304	

NUMBER UNSATISFACTORY (Level 1)

Grade	Year	White	African Amer	Hispanic	Econ Disadv	Special Educ	LEP	At Risk	Migrant	Male	Female	All	District	Number Tested (All Students)
6	2012	*	8	161	168	8	110	153		89	83	172	3,673	459
	2013	*	10	205	210	11	123	175	*	103	113	216	4,523	449
	2014	*	10	142	145	5	101	146		87	67	154	3,679	422
7	2012	3	6	152	146	8	89	130		79	83	162	3,070	420
	2013	*	1	131	125	4	75	117		76	56	132	3,215	437
	2014	*	10	181	173	6	105	179		95	96	191	4,075	458
8	2012	*	6	129	122	20	60	114		74	63	137	2,786	409
	2013	*	3	59	61	5	41	57		35	27	62	1,586	412
	2014	*	0	63	61	2	42	60		35	28	63	1,797	451
6-8	2012	5	20	442	436	36	259	397		242	229	471	9,529	1,288
	2013	1	14	395	396	20	239	349	*	214	196	410	9,324	1,298
	2014	1	20	386	379	13	248	385		217	191	408	9,551	1,331

NUMBER TESTED IN GRADES 6-8													
2012	12	44	1,225	1,191	49	482	780			622	666	1,288	29,211
2013	9	52	1,230	1,229	36	541	809	1		616	682	1,298	29,692
2014	7	56	1,261	1,251	29	542	952			663	668	1,331	30,015

PERCENTAGE ADVANCED (Level 3)

Grade	Year	White	African Amer	Hispanic	Econ Disadv	Special Educ	LEP	At Risk	Migrant	Male	Female	All	District	Number Tested (All Students)
3	2012	*	10.3	13.1	11.5	8.3	10.2	4.1		10.4	15.3	12.6	12.6	246
	2013	*	3.6	12.1	9.9	0.0	8.9	5.0		10.5	11.3	10.9	13.6	230
	2014	*	2.9	6.6	5.6	0.0	3.6	1.8		5.9	6.0	5.9	9.6	269
4	2012	0.0	0.0	11.5	10.1	0.0	4.9	3.7		13.3	7.0	10.3	11.2	234
	2013	*	5.0	12.5	12.1	0.0	18.5	12.1		8.3	15.2	11.6	13.5	233
	2014	*	0.0	12.1	10.8	0.0	10.0	4.7		10.8	11.2	11.0	12.0	237
5	2012	*	5.6	8.1	7.3	0.0	3.6	3.6		8.9	7.5	8.1	11.1	332
	2013	0.0	11.8	11.9	11.4	11.1	8.1	5.3		15.5	7.6	11.6	13.3	293
	2014	*	7.4	9.6	8.8	0.0	10.2	5.8		9.5	9.0	9.2	11.5	292
3-5	2012	9.1	6.3	10.5	9.4	3.4	5.2	3.8		10.7	9.5	10.1	11.6	812
	2013	0.0	6.2	12.1	11.2	3.8	10.9	6.6		11.7	11.0	11.4	13.5	756
	2014	0.0	3.3	9.4	8.3	0.0	8.5	4.2		8.7	8.5	8.6	11.1	798

NUMBER TESTED IN GRADE 3-5													
2012	11	63	730	756	29	229	501		413	399	812	22,173	
2013	11	65	675	708	26	221	423		393	363	756	21,619	
2014	10	90	695	723	31	224	522		412	386	798	21,304	

PERCENTAGE ADVANCED (Level 3)

Grade	Year	White	African Amer	Hispanic	Econ Disadv	Special Educ	LEP	At Risk	Migrant	Male	Female	All	District	Number Tested (All Students)
6	2012	*	0.0	6.5	5.9	0.0	4.0	3.7		5.9	6.7	6.3	8.3	459
	2013	*	0.0	5.7	5.9	0.0	2.0	1.4	*	6.3	4.8	5.6	11.3	449
	2014	*	0.0	3.8	3.5	0.0	2.1	1.5		3.7	3.4	3.6	7.1	422
7	2012	0.0	5.6	4.6	4.7	0.0	0.0	1.6		4.5	4.5	4.5	10.3	420
	2013	*	0.0	5.7	5.8	0.0	1.1	1.5		4.7	6.2	5.5	8.7	437
	2014	*	0.0	5.3	4.8	0.0	1.6	2.1		5.7	4.4	5.0	10.0	458
8	2012	*	0.0	4.1	4.4	0.0	0.0	1.4		1.5	6.8	4.2	9.9	409
	2013	*	11.1	8.8	8.5	0.0	1.2	3.1		9.2	8.3	8.7	15.5	412
	2014	*	0.0	12.4	11.9	0.0	0.0	2.1		9.7	14.1	12.0	13.1	451
6-8	2012	0.0	2.3	5.1	5.0	0.0	2.1	2.4		4.0	6.0	5.0	9.5	1,288
	2013	0.0	3.8	6.7	6.7	0.0	1.5	2.0	*	6.7	6.5	6.5	11.7	1,298
	2014	0.0	0.0	7.3	6.9	0.0	1.5	1.9		6.3	7.5	6.9	10.1	1,331

NUMBER TESTED IN GRADE 6-8													
2012	12	44	1,225	1,191	49	482	780		622	666	1,288	29,211	
2013	9	52	1,230	1,229	36	541	809	1	616	682	1,298	29,692	
2014	7	56	1,261	1,251	29	542	952		663	668	1,331	30,015	

AVERAGE PERCENTAGE OF ITEMS CORRECT BY REPORTING CATEGORY

Grade	Year	REPORTING CATEGORY		
		1. Understanding Across Genres (GR 3-5) 1. Understanding/Analysis Across Genres (GR 6-8)	2. Understanding/Analysis of Literary Texts	3. Understanding/Analysis of Informational Texts
3	2012	62.1	54.4	62.6
	2013	65.2	58.4	60.8
	2014	59.9	59.2	52.9
4	2012	62.2	62.0	56.4
	2013	66.4	58.5	59.3
	2014	58.0	57.9	55.6
5	2012	62.4	57.1	66.7
	2013	68.1	67.5	67.3
	2014	66.4	64.0	66.6
3-5	2012	62.2	57.7	62.5
	2013	66.7	61.9	62.8
	2014	61.7	60.6	58.7

AVERAGE PERCENTAGE OF ITEMS CORRECT BY REPORTING CATEGORY

Grade	Year	REPORTING CATEGORY		
		1. Understanding Across Genres (GR 3-5) 1. Understanding/Analysis Across Genres (GR 6-8)	2. Understanding/Analysis of Literary Texts	3. Understanding/Analysis of Informational Texts
6	2012	66.2	61.1	56.6
	2013	59.3	56.3	55.6
	2014	59.2	56.1	58.2
7	2012	64.9	56.1	55.6
	2013	60.0	57.1	66.5
	2014	61.1	54.6	52.6
8	2012	62.3	56.6	58.4
	2013	67.9	68.4	59.1
	2014	67.1	65.8	61.8
6-8	2012	64.5	58.1	56.8
	2013	62.3	60.4	60.4
	2014	62.6	58.9	57.5

PERCENTAGE SATISFACTORY (Levels 2 and 3)

Test	Year	White	African Amer	Hispanic	Econ Disadv	Special Educ	LEP	At Risk	Migrant	Male	Female	All	District
ENGLISH I	2012												
	2013												
	2014	62.5	55.0	60.9	61.5	12.5	36.0	51.9		53.7	67.4	60.8	50.9
Tests Taken	2012												
	2013												
	2014	8	20	745	673	32	253	617		376	402	778	13,789
ENGLISH II	2012												
	2013												
	2014	*	46.7	51.0	51.0	14.8	21.6	40.1		46.0	56.0	50.9	54.8
Tests Taken	2012												
	2013												
	2014	4	15	569	504	27	134	464		298	293	591	10,943

NUMBER UNSATISFACTORY (Level 1)

Test	Year	White	African Amer	Hispanic	Econ Disadv	Special Educ	LEP	At Risk	Migrant	Male	Female	All	District
ENGLISH I	2012												
	2013												
	2014	3	9	291	259	28	162	297		174	131	305	6,774
Tests Taken	2012												
	2013												
	2014	8	20	745	673	32	253	617		376	402	778	13,789
ENGLISH II	2012												
	2013												
	2014	*	8	279	247	23	105	278		161	129	290	4,948
Tests Taken	2012												
	2013												
	2014	4	15	569	504	27	134	464		298	293	591	10,943

PERCENTAGE ADVANCED (Level 3)

Test	Year	White	African Amer	Hispanic	Econ Disadv	Special Educ	LEP	At Risk	Migrant	Male	Female	All	District
ENGLISH I	2012												
	2013												
	2014	0.0	0.0	1.3	1.3	0.0	0.0	0.0		0.3	2.2	1.3	3.2
Tests Taken	2012												
	2013												
	2014	8	20	745	673	32	253	617		376	402	778	13,789
ENGLISH II	2012												
	2013												
	2014	*	0.0	0.5	0.4	0.0	0.0	0.2		0.0	1.0	0.5	2.7
Tests Taken	2012												
	2013												
	2014	4	15	569	504	27	134	464		298	293	591	10,943

AVERAGE PERCENTAGE OF ITEMS CORRECT BY REPORTING CATEGORY

ENGLISH I	1. Understanding & Analysis Across Genres	1. Average Rating Short Answer #1 ¹	1. Average Rating Short Answer #2 ¹	2. Understanding & Analysis of Literary Texts	3. Understanding & Analysis of Informational Texts	4. Expository Composition ²	5. Revision	6. Editing
2012								
2013								
2014	62.2	1.3	1.5	59.8	57.0	4.2	64.5	53.1

ENGLISH II	1. Understanding & Analysis Across Genres	1. Average Rating Short Answer #1 ¹	1. Average Rating Short Answer #2 ¹	2. Understanding & Analysis of Literary Texts	3. Understanding & Analysis of Informational Texts	4. Persuasive Composition ²	5. Revision	6. Editing
2012								
2013								
2014	72.7	0.9	1.2	48.7	61.9	4.3	63.3	66.4

¹Short answer rating scale: 0=Insufficient; 1=Partially Sufficient; 2=Sufficient; 3=Exemplary

²Average score points (0-8). A composition is rated twice on a scale of 1 to 4, and the ratings are summed to determine score points for the composition. Score point scale: 0=Nonscorable; 2=Very Limited; 3=between Very Limited and Basic; 4=Basic; 5=between Basic and Satisfactory; 6=Satisfactory; 7=between Satisfactory and Accomplished; 8=Accomplished

PERCENTAGE SATISFACTORY (Levels 2 or 3)

Grade	Year	White	African Amer	Hispanic	Econ Disadv	Special Educ	LEP	At Risk	Migrant	Male	Female	All	District	Number Tested (All Students)
4	2012	85.7	56.3	59.6	58.3	12.5	47.5	37.7		50.4	71.1	60.5	60.6	233
	2013	*	45.0	67.3	64.1	42.9	61.7	53.7		57.3	73.8	65.2	63.9	224
	2014	*	25.0	62.6	55.4	20.0	57.7	42.9		49.6	68.0	58.0	61.9	226

NUMBER TESTED IN GRADE 4													
2012	7	16	208	216	8	40	106		119	114	233	7,039	
2013	2	20	199	206	7	47	82		117	107	224	6,771	
2014	2	28	195	202	10	52	140		123	103	226	7,022	

PERCENTAGE SATISFACTORY (Levels 2 or 3)

Grade	Year	White	African Amer	Hispanic	Econ Disadv	Special Educ	LEP	At Risk	Migrant	Male	Female	All	District	Number Tested (All Students)
7	2012	50.0	52.6	51.6	51.7	9.1	25.9	33.1		42.4	60.0	51.8	59.2	423
	2013	*	70.0	65.9	65.9	36.4	53.1	51.9		57.6	74.2	66.3	57.1	439
	2014	*	56.0	53.1	52.7	22.2	37.2	40.8		47.4	59.3	53.4	54.6	461

NUMBER TESTED IN GRADE 7													
2012	8	19	395	385	11	147	245		198	225	423	9,456	
2013	2	10	425	416	11	175	266		210	229	439	9,785	
2014	1	25	433	419	9	191	341		230	231	461	10,339	

NUMBER UNSATISFACTORY (Level 1)

Grade	Year	White	African Amer	Hispanic	Econ Disadv	Special Educ	LEP	At Risk	Migrant	Male	Female	All	District	Number Tested (All Students)
4	2012	1	7	84	90	7	21	66		59	33	92	2,772	233
	2013	*	11	65	74	4	18	38		50	28	78	2,442	224
	2014	*	21	73	90	8	22	80		62	33	95	2,675	226

NUMBER TESTED IN GRADE 4													
2012	7	16	208	216	8	40	106		119	114	233	7,039	
2013	2	20	199	206	7	47	82		117	107	224	6,771	
2014	2	28	195	202	10	52	140		123	103	226	7,022	

NUMBER UNSATISFACTORY (Level 1)

Grade	Year	White	African Amer	Hispanic	Econ Disadv	Special Educ	LEP	At Risk	Migrant	Male	Female	All	District	Number Tested (All Students)
7	2012	4	9	191	186	10	109	164		114	90	204	3,859	423
	2013	*	3	145	142	7	82	128		89	59	148	4,198	439
	2014	*	11	203	198	7	120	202		121	94	215	4,690	461

NUMBER TESTED IN GRADE 7													
2012	8	19	395	385	11	147	245		198	225	423	9,456	
2013	2	10	425	416	11	175	266		210	229	439	9,785	
2014	1	25	433	419	9	191	341		230	231	461	10,339	

PERCENTAGE ADVANCED (Level 3)

Grade	Year	White	African Amer	Hispanic	Econ Disadv	Special Educ	LEP	At Risk	Migrant	Male	Female	All	District	Number Tested (All Students)
4	2012	0.0	0.0	1.9	2.3	0.0	0.0	0.0		3.4	0.9	2.1	5.1	233
	2013	*	0.0	1.0	1.0	0.0	0.0	0.0		0.9	0.9	0.9	4.7	224
	2014	*	0.0	2.6	2.5	0.0	3.8	1.4		2.4	1.9	2.2	3.7	226

NUMBER TESTED IN GRADE 4													
2012	7	16	208	216	8	40	106		119	114	233	7,039	
2013	2	20	199	206	7	47	82		117	107	224	6,771	
2014	2	28	195	202	10	52	140		123	103	226	7,022	

PERCENTAGE ADVANCED (Level 3)

Grade	Year	White	African Amer	Hispanic	Econ Disadv	Special Educ	LEP	At Risk	Migrant	Male	Female	All	District	Number Tested (All Students)
7	2012	0.0	5.3	0.8	1.0	0.0	0.0	0.4		0.5	1.3	0.9	3.4	423
	2013	*	0.0	0.0	0.0	0.0	0.0	0.0		0.0	0.0	0.0	1.5	439
	2014	*	0.0	1.8	1.9	0.0	0.0	0.6		1.3	2.2	1.7	3.0	461

NUMBER TESTED IN GRADE 7													
2012	8	19	395	385	11	147	245		198	225	423	9,456	
2013	2	10	425	416	11	175	266		210	229	439	9,785	
2014	1	25	433	419	9	191	341		230	231	461	10,339	

AVERAGE PERCENTAGE OF ITEMS CORRECT BY REPORTING CATEGORY

Grade	Year	REPORTING CATEGORY			
		1. Composition ¹ GR 4: Personal Narrative GR 7: Expository	1. Composition ¹ GR 4: Expository GR 7: Personal Narrative	2. Revision	3. Editing
4	2012	2.0	2.0	60.8	57.5
	2013	4.1	3.7	52.1	62.9
	2014	4.1	3.9	62.5	53.6
7	2012	1.7	2.2	60.3	55.9
	2013	4.1	4.7	62.0	63.4
	2014	3.8	4.3	60.0	56.6

¹Average score points (range 0-8). A STAAR composition is rated twice on a scale of 1 to 4, and the ratings are summed to determine score points for the composition. Score point scale: 0=Non-scorable; 2=Very Limited; 3=between Very Limited and Basic; 4=Basic; 5=between Basic and Satisfactory; 6=Satisfactory; 7=between Satisfactory and Accomplished; 8=Accomplished

PERCENTAGE SATISFACTORY (Levels 2 or 3)

Grade	Year	White	African Amer	Hispanic	Econ Disadv	Special Educ	LEP	At Risk	Migrant	Male	Female	All	District	Number Tested (All Students)	
3	2012	*	34.5	53.2	52.0	52.9	50.8	45.5		53.4	50.8	52.1	55.4	520	
	2013	*	17.9	61.7	58.5	33.3	64.3	55.6		57.3	60.8	59.0	57.5	434	
	2014		16.7	45.7	57.1	55.5	57.1	52.6	50.0		55.6	56.0	55.8	541	
4	2012		42.9	25.0	56.1	54.7	28.6	57.2	51.0		55.0	54.7	54.8	53.0	478
	2013	*	30.0	62.0	60.5	57.1	60.2	57.0		62.2	58.5	60.4	57.5	449	
	2014	*	28.6	63.5	60.1	28.6	61.0	55.1		59.1	64.0	61.4	59.0	472	
5	2012	*	50.0	63.9	63.0	27.3	64.1	58.4		62.4	65.2	63.9	64.1	482	
	2013		50.0	70.6	82.3	80.9	78.6	85.1	79.7		81.7	81.4	81.5	81.7	465
	2014	*	77.8	87.0	86.6	73.3	85.5	83.7		85.3	87.4	86.4	81.4	455	
3-5	2012		58.3	36.5	57.6	56.5	38.1	57.2	51.3		56.8	56.9	56.8	57.5	1,480
	2013		54.5	35.4	69.0	67.0	54.3	70.3	64.2		67.2	67.3	67.2	65.3	1,348
	2014		36.4	50.0	68.5	66.5	54.0	65.4	62.1		66.0	68.2	67.1	66.3	1,468

NUMBER TESTED IN GRADES 3-5													
2012	12	63	1,397	1,408	42	880	1,005			722	758	1,480	35,372
2013	11	65	1,267	1,289	46	792	1,005			679	669	1,348	34,686
2014	11	90	1,363	1,369	50	889	1,187			745	723	1,468	35,222

PERCENTAGE SATISFACTORY (Levels 2 or 3)

Grade	Year	White	African Amer	Hispanic	Econ Disadv	Special Educ	LEP	At Risk	Migrant	Male	Female	All	District	Number Tested (All Students)
6	2012	*	9.1	65.7	64.2	45.5	63.4	57.0		63.6	65.3	64.5	66.4	453
	2013	*	45.8	69.5	67.9	28.6	65.2	60.9	*	70.6	66.2	68.4	60.6	446
	2014	*	44.4	76.7	75.6	55.6	77.3	70.3		72.4	78.7	75.5	64.3	412
7	2012	85.7	44.4	63.4	63.0	50.0	50.3	48.5		62.2	63.3	62.8	59.9	414
	2013	*	70.0	72.7	73.1	54.5	69.5	61.1		70.2	75.3	72.9	59.9	428
	2014	*	36.0	56.0	54.9	22.2	45.4	44.9		55.1	55.4	55.2	55.1	451
8	2012	*	20.0	61.1	60.1	40.0	45.3	49.5		62.1	55.3	59.1	51.9	276
	2013	*	68.8	90.3	89.4	66.7	88.4	86.6		88.3	90.2	89.4	74.0	311
	2014	*	91.7	86.6	86.5	100.0	80.8	83.1		83.4	90.1	86.9	73.2	350
6-8	2012	90.9	28.2	63.8	62.8	43.5	56.4	52.4		62.7	62.4	62.6	60.3	1,143
	2013	88.9	58.0	76.1	75.4	47.1	72.6	68.3	*	74.8	76.2	75.5	63.7	1,185
	2014	83.3	50.9	72.0	71.5	60.7	66.6	64.7		69.0	73.5	71.2	63.3	1,213

NUMBER TESTED IN GRADES 6-8													
2012	11	39	1,087	1,062	46	461	757			563	580	1,143	26,044
2013	9	50	1,120	1,121	34	497	757	1		560	625	1,185	26,676
2014	6	55	1,146	1,140	28	518	919			606	607	1,213	27,304

NUMBER UNSATISFACTORY (Level 1)

Grade	Year	White	African Amer	Hispanic	Econ Disadv	Special Educ	LEP	At Risk	Migrant	Male	Female	All	District	Number Tested (All Students)
3	2012	*	19	228	237	8	154	237		122	127	249	5,287	520
	2013	*	23	154	172	12	90	161		96	82	178	5,086	434
	2014	5	19	214	229	9	154	218		118	121	239	4,988	541
4	2012	4	12	199	207	10	121	171		104	112	216	5,511	478
	2013	*	14	161	168	6	103	130		85	93	178	4,919	449
	2014	*	20	161	174	10	115	172		101	81	182	4,803	472
5	2012	*	9	165	169	8	102	155		86	88	174	4,228	482
	2013	3	5	78	86	3	42	69		42	44	86	2,035	465
	2014	*	6	55	56	4	39	60		34	28	62	2,088	455
3-5	2012	5	40	592	613	26	377	563		312	327	639	15,026	1,480
	2013	5	42	393	426	21	235	360		223	219	442	12,040	1,348
	2014	7	45	430	459	23	308	450		253	230	483	11,879	1,468

NUMBER TESTED IN GRADES 3-5													
2012	12	63	1,397	1,408	42	880	1,005			722	758	1,480	35,372
2013	11	65	1,267	1,289	46	792	1,005			679	669	1,348	34,686
2014	11	90	1,363	1,369	50	889	1,187			745	723	1,468	35,222

NUMBER UNSATISFACTORY (Level 1)

Grade	Year	White	African Amer	Hispanic	Econ Disadv	Special Educ	LEP	At Risk	Migrant	Male	Female	All	District	Number Tested (All Students)
6	2012	*	10	150	157	6	89	139		79	82	161	3,327	453
	2013	*	13	127	136	10	70	111	*	64	77	141	4,133	446
	2014	*	10	90	95	4	52	97		58	43	101	3,478	412
7	2012	1	10	142	139	5	71	123		73	81	154	3,705	414
	2013	*	3	113	109	5	51	100		61	55	116	3,851	428
	2014	*	16	186	184	7	101	183		102	100	202	4,536	451
8	2012	*	8	102	99	15	41	94		58	55	113	3,319	276
	2013	*	5	28	31	3	15	29		16	17	33	1,709	311
	2014	*	1	45	46	0	20	44		28	18	46	2,001	350
6-8	2012	1	28	394	395	26	201	356		210	218	428	10,351	1,143
	2013	1	21	268	276	18	136	240	*	141	149	290	9,693	1,185
	2014	1	27	321	325	11	173	324		188	161	349	10,015	1,213

NUMBER TESTED IN GRADES 6-8													
2012	11	39	1,087	1,062	46	461	757			563	580	1,143	26,044
2013	9	50	1,120	1,121	34	497	757	1		560	625	1,185	26,676
2014	6	55	1,146	1,140	28	518	919			606	607	1,213	27,304

PERCENTAGE ADVANCED (Level 3)

Grade	Year	White	African Amer	Hispanic	Econ Disadv	Special Educ	LEP	At Risk	Migrant	Male	Female	All	District	Number Tested (All Students)
3	2012	*	3.4	8.6	7.3	0.0	7.0	5.5		10.7	5.8	8.3	7.9	520
	2013	*	0.0	8.2	7.0	0.0	9.1	7.2		7.1	8.1	7.6	9.1	434
	2014	0.0	2.9	7.6	7.4	4.8	6.2	5.7		6.8	7.6	7.2	10.4	541
4	2012	0.0	0.0	6.6	6.6	7.1	7.1	5.7		6.5	6.1	6.3	6.1	478
	2013	*	0.0	9.0	8.2	0.0	6.6	6.6		11.1	5.8	8.5	9.5	449
	2014	*	3.6	13.4	12.6	0.0	13.6	11.0		13.0	12.4	12.7	14.0	472
5	2012	*	0.0	8.5	7.9	0.0	8.8	7.0		7.9	8.3	8.1	10.4	482
	2013	0.0	5.9	12.7	12.2	0.0	12.5	10.3		12.2	12.3	12.3	12.8	465
	2014	*	14.8	17.0	16.7	6.7	18.2	13.6		18.1	15.2	16.7	15.7	455
3-5	2012	0.0	1.6	7.9	7.2	2.4	7.6	6.1		8.4	6.7	7.6	8.1	1,480
	2013	0.0	1.5	10.0	9.2	0.0	9.5	8.1		10.2	8.8	9.5	10.4	1,348
	2014	0.0	6.7	12.4	11.9	4.0	12.3	9.9		12.3	11.5	11.9	13.3	1,468

NUMBER TESTED IN GRADE 3-5													
2012	12	63	1,397	1,408	42	880	1,157		722	758	1,480	35,372	
2013	11	65	1,267	1,289	46	792	1,005		679	669	1,348	34,686	
2014	11	90	1,363	1,369	50	889	1,187		745	723	1,468	35,222	

PERCENTAGE ADVANCED (Level 3)

Grade	Year	White	African Amer	Hispanic	Econ Disadv	Special Educ	LEP	At Risk	Migrant	Male	Female	All	District	Number Tested (All Students)
6	2012	*	0.0	8.9	8.7	0.0	8.6	6.8		8.3	8.9	8.6	9.8	453
	2013	*	0.0	9.6	9.0	7.1	9.0	6.3	*	10.6	7.9	9.2	8.5	446
	2014	*	5.6	15.0	14.6	0.0	12.2	9.2		15.2	13.4	14.3	9.6	412
7	2012	0.0	0.0	1.8	1.9	0.0	0.0	0.4		1.6	1.8	1.7	6.3	414
	2013	*	0.0	7.2	7.4	0.0	1.2	2.3		7.3	7.2	7.2	4.8	428
	2014	*	0.0	6.1	5.4	0.0	0.5	1.8		7.0	4.5	5.8	6.7	451
8	2012	*	0.0	0.4	0.4	4.0	1.3	0.5		0.7	0.0	0.4	0.4	276
	2013	*	0.0	1.0	1.0	0.0	0.0	0.5		1.5	0.6	1.0	0.9	311
	2014	*	0.0	1.5	1.5	0.0	0.0	0.4		1.8	1.1	1.4	1.0	350
6-8	2012	0.0	0.0	4.3	4.3	2.2	4.8	3.2		3.9	4.3	4.1	6.1	1,143
	2013	0.0	0.0	6.5	6.3	2.9	4.0	3.3	*	7.1	5.6	6.3	5.3	1,185
	2014	0.0	1.8	7.8	7.4	0.0	5.6	4.0		8.4	6.4	7.4	6.2	1,213

NUMBER TESTED IN GRADE 6-8													
2012	11	39	1,087	1,062	46	461	748		563	580	1,143	26,044	
2013	9	50	1,120	1,121	34	497	757	1	560	625	1,185	26,676	
2014	6	55	1,146	1,140	28	518	919		606	607	1,213	27,304	

AVERAGE PERCENTAGE OF ITEMS CORRECT BY REPORTING CATEGORY

Grade	Year	REPORTING CATEGORY				
		1. Numbers, Operations, and Quantitative Reasoning	2. Patterns, Relationships, and Algebraic Reasoning	3. Geometry and Spatial Reasoning	4. Measurement	5. Probability and Statistics
3	2012	57.8	54.2	67.5	57.5	46.8
	2013	60.3	58.6	67.5	68.2	62.7
	2014	62.9	59.5	56.8	62.4	58.7
4	2012	59.8	58.3	66.2	55.0	54.6
	2013	64.2	62.4	71.7	60.9	47.0
	2014	64.1	66.9	69.6	60.9	59.6
5	2012	59.6	57.5	61.7	54.1	61.8
	2013	66.9	61.5	66.4	64.0	70.5
	2014	71.2	65.4	76.1	63.3	69.1
3-5	2012	59.0	56.6	65.2	55.6	54.2
	2013	63.9	60.9	68.5	64.3	60.2
	2014	65.9	63.7	66.9	62.2	62.2

AVERAGE PERCENTAGE OF ITEMS CORRECT BY REPORTING CATEGORY

Grade	Year	REPORTING CATEGORY				
		1. Numbers, Operations, and Quantitative Reasoning	2. Patterns, Relationships, and Algebraic Reasoning	3. Geometry and Spatial Reasoning	4. Measurement	5. Probability and Statistics
6	2012	50.1	55.7	52.4	47.4	49.9
	2013	55.0	56.0	55.9	47.1	55.5
	2014	61.3	58.2	60.6	55.2	61.0
7	2012	49.1	48.5	57.4	39.8	45.3
	2013	54.6	58.4	63.9	45.0	48.1
	2014	55.0	46.9	49.9	44.6	50.9
8	2012	44.7	42.8	41.6	39.5	44.2
	2013	54.3	54.6	53.8	54.2	47.4
	2014	55.8	57.6	62.0	51.8	60.8
6-8	2012	48.4	50.0	51.6	42.7	46.9
	2013	54.7	56.5	58.2	48.2	50.7
	2014	57.4	53.8	57.1	50.3	57.2

PERCENTAGE SATISFACTORY (Levels 2 or 3)

Test	Year	White	African Amer	Hispanic	Econ Disadv	Special Educ	LEP	At Risk	Migrant	Male	Female	All	District
ALGEBRA I	2012	*	80.0	76.4	75.9	40.0	58.8	67.4		73.7	78.8	76.6	74.7
	2013	*	78.6	77.5	76.9	43.8	66.7	68.7		73.2	82.2	77.6	72.5
	2014	100.0	71.4	86.4	86.2	60.0	72.4	79.2		86.0	86.1	86.1	78.0
Tests Taken	2012	2	20	432	403	15	85	246		194	264	458	8,795
	2013	2	14	418	403	32	96	246		224	213	437	9,251
	2014	7	14	487	450	20	134	331		229	280	509	9,524

NUMBER UNSATISFACTORY (Level 1)

Test	Year	White	African Amer	Hispanic	Econ Disadv	Special Educ	LEP	At Risk	Migrant	Male	Female	All	District
ALGEBRA I	2012	*	4	102	97	9	35	77		51	56	107	2,226
	2013	*	3	94	93	18	32	77		60	38	98	2,540
	2014	0	4	66	62	8	37	69		32	39	71	2,099
Tests Taken	2012	2	20	432	403	15	85	246		194	264	458	8,795
	2013	2	14	418	403	32	96	246		224	213	437	9,251
	2014	7	14	487	450	20	134	331		229	280	509	9,524

PERCENTAGE ADVANCED (Level 3)

Test	Year	White	African Amer	Hispanic	Econ Disadv	Special Educ	LEP	At Risk	Migrant	Male	Female	All	District
ALGEBRA I	2012	*	0.0	2.3	2.0	0.0	1.2	0.8		1.5	2.7	2.2	7.0
	2013	*	0.0	2.6	2.5	3.1	2.1	1.6		2.7	2.3	2.5	8.6
	2014	0.0	0.0	10.3	10.9	0.0	2.2	2.7		11.4	8.6	9.8	9.9
Tests Taken	2012	2	20	432	403	15	85	236		194	264	458	8,795
	2013	2	14	418	403	32	96	246		224	213	437	9,251
	2014	7	14	487	450	20	134	331		229	280	509	9,524

AVERAGE PERCENTAGE OF ITEMS CORRECT BY REPORTING CATEGORY

ALGEBRA I	1. Functional Relationships	2. Properties and Attributes of Functions	3. Linear Functions	4. Linear Equations and Inequalities	5. Quadratic and Other Nonlinear Functions
2012	54.9	43.8	46.6	42.1	46.5
2013	50.8	44.3	47.8	50.7	51.5
2014	50.8	56.8	57.2	54.3	51.6

PERCENTAGE SATISFACTORY (Levels 2 or 3)

Grade	Year	White	African Amer	Hispanic	Econ Disadv	Special Educ	LEP	At Risk	Migrant	Male	Female	All	District	Number Tested (All Students)
5	2012	*	47.4	55.6	55.2	25.0	52.8	47.8		56.2	55.3	55.7	58.2	411
	2013	66.7	62.5	65.1	65.3	25.0	65.2	57.9		69.3	60.9	65.2	65.1	394
	2014	*	48.1	68.7	66.6	41.7	69.6	60.9		69.4	65.1	67.3	61.3	339

NUMBER TESTED IN GRADE 5													
2012	3	19	385	388	12	212	297		194	217	411	10,697	
2013	9	16	367	378	8	210	271		202	192	394	10,180	
2014	3	27	307	305	12	158	256		170	169	339	9,073	

PERCENTAGE SATISFACTORY (Levels 2 or 3)

Grade	Year	White	African Amer	Hispanic	Econ Disadv	Special Educ	LEP	At Risk	Migrant	Male	Female	All	District	Number Tested (All Students)
8	2012	*	57.1	52.1	52.2	35.7	25.0	31.6		60.4	43.4	51.8	54.0	407
	2013	*	55.6	59.9	59.3	10.0	44.1	45.9		65.9	54.3	59.4	65.8	399
	2014	*	92.3	69.7	69.8	66.7	39.0	54.3		69.8	71.2	70.5	61.9	438

NUMBER TESTED IN GRADE 8													
2012	1	14	388	364	28	84	212		202	205	407	9,431	
2013	4	18	374	376	10	152	244		176	223	399	8,998	
2014	2	13	422	414	12	105	269		212	226	438	9,466	

NUMBER UNSATISFACTORY (Level 1)

Grade	Year	White	African Amer	Hispanic	Econ Disadv	Special Educ	LEP	At Risk	Migrant	Male	Female	All	District	Number Tested (All Students)
5	2012	*	10	171	174	9	100	155		85	97	182	4476	411
	2013	3	6	128	131	6	73	114		62	75	137	3551	394
	2014	*	14	96	102	7	48	100		52	59	111	3511	339

NUMBER TESTED IN GRADE 5													
2012	3	19	385	388	12	212	297		194	217	411	10,697	
2013	9	16	367	378	8	210	271		202	192	394	10,180	
2014	3	27	307	305	12	158	256		170	169	339	9,073	

NUMBER UNSATISFACTORY (Level 1)

Grade	Year	White	African Amer	Hispanic	Econ Disadv	Special Educ	LEP	At Risk	Migrant	Male	Female	All	District	Number Tested (All Students)
8	2012	*	6	186	174	18	63	145		80	116	196	4335	407
	2013	*	8	150	153	9	85	132		60	102	162	3074	399
	2014	*	1	128	125	4	64	123		64	65	129	3605	438

NUMBER TESTED IN GRADE 8													
2012	1	14	388	364	28	84	212		202	205	407	9,431	
2013	4	18	374	376	10	152	244		176	223	399	8,998	
2014	2	13	422	414	12	105	269		212	226	438	9,466	

PERCENTAGE ADVANCED (Level 3)

Grade	Year	White	African Amer	Hispanic	Econ Disadv	Special Educ	LEP	At Risk	Migrant	Male	Female	All	District	Number Tested (All Students)
5	2012	*	0.0	3.6	3.1	0.0	2.4	1.7		5.2	1.8	3.4	6.5	411
	2013	0.0	6.3	8.2	7.7	0.0	7.6	5.9		9.9	5.7	7.9	6.6	394
	2014	*	0.0	6.5	6.2	0.0	6.3	4.3		7.6	4.1	5.9	5.3	339

NUMBER TESTED IN GRADE 5													
2012	3	19	385	388	12	212	297		194	217	411	10,697	
2013	9	16	367	378	8	210	271		202	192	394	10,180	
2014	3	27	307	305	12	158	256		170	169	339	9,073	

PERCENTAGE ADVANCED (Level 3)

Grade	Year	White	African Amer	Hispanic	Econ Disadv	Special Educ	LEP	At Risk	Migrant	Male	Female	All	District	Number Tested (All Students)
8	2012	*	0.0	1.0	0.8	0.0	0.0	0.0		1.0	1.0	1.0	4.2	407
	2013	*	0.0	3.5	3.5	10.0	0.7	1.6		4.0	2.7	3.3	7.1	399
	2014	*	7.7	12.6	12.3	8.3	2.9	3.7		13.2	11.5	12.3	11.3	438

NUMBER TESTED IN GRADE 8													
2012	1	14	388	364	28	84	212		202	205	407	9,431	
2013	4	18	374	376	10	152	244		176	223	399	8,998	
2014	2	13	422	414	12	105	269		212	226	438	9,466	

AVERAGE PERCENTAGE OF ITEMS CORRECT BY REPORTING CATEGORY

Grade	Year	REPORTING CATEGORY			
		1. Matter and Energy	2. Force, Motion, and Energy	3. Earth and Space	4. Organisms and Environments
5	2012	69.8	75.8	64.0	59.6
	2013	69.5	71.3	62.9	62.0
	2014	64.0	64.3	63.3	66.3
8	2012	51.2	53.7	53.2	54.8
	2013	57.7	53.9	53.9	53.7
	2014	64.3	63.6	57.6	71.0

PERCENTAGE SATISFACTORY (Levels 2 and 3)

Test	Year	White	African Amer	Hispanic	Econ Disadv	Special Educ	LEP	At Risk	Migrant	Male	Female	All	District
BIOLOGY	2012	*	83.3	83.4	83.3	46.2	65.1	75.1		82.7	84.1	83.5	82.9
	2013	*	80.0	84.3	83.9	56.7	73.2	75.6		84.3	84.4	84.3	84.4
	2014	85.7	100.0	93.4	93.2	68.8	82.4	90.5		92.2	94.5	93.5	89.8
Tests Taken	2012	4	18	459	425	13	86	249		214	270	484	8,881
	2013	2	15	439	417	30	82	234		235	224	459	9,374
	2014	7	12	470	427	16	131	336		218	275	493	9,672

NUMBER UNSATISFACTORY (Level 1)

Test	Year	White	African Amer	Hispanic	Econ Disadv	Special Educ	LEP	At Risk	Migrant	Male	Female	All	District
BIOLOGY	2012	*	3	76	71	7	30	62		37	43	80	1,522
	2013	*	3	69	67	13	22	57		37	35	72	1,467
	2014	1	0	31	29	5	23	32		17	15	32	987
Tests Taken	2012	4	18	459	425	13	86	249		214	270	484	8,881
	2013	2	15	439	417	30	82	234		235	224	459	9,374
	2014	7	12	470	427	16	131	336		218	275	493	9,672

PERCENTAGE ADVANCED (Level 3)

Test	Year	White	African Amer	Hispanic	Econ Disadv	Special Educ	LEP	At Risk	Migrant	Male	Female	All	District
BIOLOGY	2012	*	0.0	0.4	0.5	0.0	0.0	0.0		0.9	0.0	0.4	4.8
	2013	*	0.0	3.2	3.1	0.0	0.0	1.7		4.3	1.8	3.1	7.5
	2014	0.0	8.3	3.4	3.5	0.0	1.5	0.6		4.1	2.9	3.4	7.5
Tests Taken	2012	4	18	459	425	13	86	249		214	270	484	8,881
	2013	2	15	439	417	30	82	234		235	224	459	9,374
	2014	7	12	470	427	16	131	336		218	275	493	9,672

AVERAGE PERCENTAGE OF ITEMS CORRECT BY REPORTING CATEGORY

BIOLOGY	1. Cell Structure and Function	2. Mechanisms of Genetics	3. Biological Evolution and Classification	4. Biological Processes and Systems	5. Interdependence within Environmental Systems
2012	47.6	49.5	53.2	40.3	50.3
2013	53.8	51.4	58.8	49.6	53.9
2014	52.8	60.9	65.6	63.1	53.0

PERCENTAGE SATISFACTORY (Levels 2 or 3)

Grade	Year	White	African Amer	Hispanic	Econ Disadv	Special Educ	LEP	At Risk	Migrant	Male	Female	All	District	Number Tested (All Students)
8	2012	*	35.7	47.4	46.7	39.3	20.5	26.8		54.0	39.3	46.7	52.5	403
	2013	*	38.9	56.9	57.1	10.0	39.1	42.1		62.3	51.6	56.3	59.3	396
	2014	*	69.2	58.9	58.1	58.3	29.5	40.7		64.8	54.0	59.2	53.5	439

NUMBER TESTED IN GRADE 8													
2012	1	14	384	360	28	83	209		202	201	403	9,392	
2013	4	18	371	375	10	151	242		175	221	396	8,991	
2014	2	13	423	415	12	105	270		213	226	439	9,464	

NUMBER UNSATISFACTORY (Level 1)

Grade	Year	White	African Amer	Hispanic	Econ Disadv	Special Educ	LEP	At Risk	Migrant	Male	Female	All	District	Number Tested (All Students)
8	2012	*	9	202	192	17	66	153		93	122	215	4462	403
	2013	*	11	160	161	9	92	140		66	107	173	3656	396
	2014	*	4	174	174	5	74	160		75	104	179	4402	439

NUMBER TESTED IN GRADE8													
2012	1	14	384	360	28	83	209		202	201	403	9,392	
2013	4	18	371	375	10	151	242		175	221	396	8,991	
2014	2	13	423	415	12	105	270		213	226	439	9,464	

PERCENTAGE ADVANCED (Level 3)

Grade	Year	White	African Amer	Hispanic	Econ Disadv	Special Educ	LEP	At Risk	Migrant	Male	Female	All	District	Number Tested (All Students)
8	2012	*	0.0	1.8	1.9	0.0	0.0	0.0		3.5	0.0	1.7	7.1	403
	2013	*	5.6	3.0	3.5	10.0	0.0	1.7		4.0	2.7	3.3	8.8	396
	2014	*	0.0	4.7	4.8	0.0	0.0	0.7		4.7	4.4	4.6	7.3	439

NUMBER TESTED IN GRADE 8													
2012	1	14	384	360	28	83	209		202	201	403	9,392	
2013	4	18	371	375	10	151	242		175	221	396	8,991	
2014	2	13	423	415	12	105	270		213	226	439	9,464	

AVERAGE PERCENTAGE OF ITEMS CORRECT BY REPORTING CATEGORY

Grade	Year	REPORTING CATEGORY			
		1. History	2. Geography and Culture	3. Government and Citizenship	4. Economics, Science, Technology, and Society
8	2012	48.3	48.2	49.4	42.2
	2013	55.0	57.9	51.7	46.4
	2014	56.4	46.6	54.1	56.8

PERCENTAGE SATISFACTORY (Levels 2 or 3)

Test	Year	White	African Amer	Hispanic	Econ Disadv	Special Educ	LEP	At Risk	Migrant	Male	Female	All	District
U.S. HISTORY	2012												*
	2013			*	*			*			*	*	90.2
	2014	*	80.0	89.3	89.0	20.0	71.6	85.9		90.9	87.7	89.0	92.0
Tests Taken	2012												4
	2013			1	1			1			1	1	51
	2014	4	10	428	392	10	74	312		186	261	447	7,801

NUMBER UNSATISFACTORY (Level 1)

Test	Year	White	African Amer	Hispanic	Econ Disadv	Special Educ	LEP	At Risk	Migrant	Male	Female	All	District
U.S. HISTORY	2012												*
	2013			*	*			*			*	*	5
	2014	*	2	46	43	8	21	44		17	32	49	625
Tests Taken	2012												4
	2013			1	1			1			1	1	51
	2014	4	10	428	392	10	74	312		186	261	447	7,801

PERCENTAGE ADVANCED (Level 3)

Test	Year	White	African Amer	Hispanic	Econ Disadv	Special Educ	LEP	At Risk	Migrant	Male	Female	All	District
U.S. HISTORY	2012												*
	2013			*	*			*			*	*	2.0
	2014	*	10.0	6.1	5.4	0.0	0.0	3.2		11.8	1.9	6.0	10.3
Tests Taken	2012												4
	2013			1	1			1			1	1	51
	2014	4	10	428	392	10	74	312		186	261	447	7,801

AVERAGE PERCENTAGE OF ITEMS CORRECT BY REPORTING CATEGORY

U.S. HISTORY	1. History	2. Geography and Culture	3. Government and Citizenship	4. Economics, Science, Technology, and Society
2012				
2013	*	*	*	*
2014	51.6	62.3	60.0	61.5

PERCENTAGE SATISFACTORY (Levels 2 or 3)

Grade	Year	White	African Amer	Hispanic	Econ Disadv	Special Educ	LEP	At Risk	Migrant	Male	Female	All	District	Number Tested (All Students)
3	2012			67.5	67.3	50.0	66.9	66.9		58.8	75.0	67.5	65.5	283
	2013			65.5	65.1	*	65.0	65.0		56.7	74.0	65.5	69.6	258
	2014	*		61.2	61.1	25.0	60.7	60.7		53.8	67.8	61.2	65.2	278
4	2012			60.9	61.7	28.6	61.0	61.0		52.1	68.7	60.9	64.4	253
	2013			63.1	63.0	42.9	61.6	62.7		57.4	68.1	63.1	61.0	222
	2014			52.7	53.2	*	52.5	52.5		45.5	60.0	52.7	60.8	241
5	2012			79.6	80.3	*	79.7	79.5		75.0	83.8	79.6	72.1	152
	2013			88.4	88.2	*	88.6	88.1		85.2	91.2	88.4	86.5	172
	2014			79.8	79.0	42.9	79.6	79.6		72.9	87.2	79.8	83.0	163
3-5	2012			67.7	68.1	33.3	67.5	67.5		59.9	74.6	67.7	66.8	688
	2013			70.7	70.5	50.0	70.1	70.3		64.2	76.7	70.7	70.6	652
	2014	*		62.6	62.6	35.3	62.3	62.3		55.6	69.5	62.6	68.7	682

NUMBER TESTED IN GRADES 3-5													
2012			688	670	15	674	677		322	366	688	14,102	
2013			652	641	14	632	639		316	335	652	13,810	
2014	1		680	658	17	677	677		338	344	682	14,654	

NUMBER UNSATISFACTORY (Level 1)

Grade	Year	White	African Amer	Hispanic	Econ Disadv	Special Educ	LEP	At Risk	Migrant	Male	Female	All	District	Number Tested (All Students)
3	2012			92	90	3	91	91		54	38	92	1,957	283
	2013			89	89	*	89	89		55	34	89	1,697	258
	2014	*		107	105	6	108	108		61	47	108	2,005	278
4	2012			99	95	5	98	98		57	42	99	1,728	253
	2013			82	80	4	81	81		46	36	82	1,915	222
	2014			114	108	*	114	114		66	48	114	1,891	241
5	2012			31	29	*	30	31		18	13	31	998	152
	2013			20	20	*	19	20		12	8	20	449	172
	2014			33	33	4	33	33		23	10	33	692	163
3-5	2012			222	214	10	219	220		129	93	222	4,683	688
	2013			191	189	7	189	190		113	78	191	4,061	652
	2014	*		254	246	11	255	255		150	105	255	4,588	682

NUMBER TESTED IN GRADES 3-5													
2012			688	670	15	674	677		322	366	688	14,102	
2013			652	641	14	632	639		316	335	652	13,810	
2014	1		680	658	17	677	677		338	344	682	14,654	

PERCENTAGE ADVANCED (Level 3)

Grade	Year	White	African Amer	Hispanic	Econ Disadv	Special Educ	LEP	At Risk	Migrant	Male	Female	All	District	Number Tested (All Students)
3	2012			15.2	14.9	0.0	13.8	13.8		15.3	15.1	15.2	13.4	283
	2013			19.8	19.6	*	19.7	19.7		21.3	18.3	19.8	17.4	258
	2014	*		15.9	16.3	0.0	15.3	15.3		15.2	16.4	15.8	17.6	278
4	2012			10.7	10.9	0.0	10.4	10.4		8.4	12.7	10.7	13.0	253
	2013			12.2	12.0	14.3	10.4	10.6		10.2	14.2	12.2	13.4	222
	2014			14.5	14.3	*	14.6	14.6		16.5	12.5	14.5	12.5	241
5	2012			11.8	11.6	*	11.5	11.9		11.1	12.5	11.8	12.1	152
	2013			9.3	9.4	*	9.0	8.9		8.6	9.9	9.3	11.6	172
	2014			11.7	11.5	14.3	11.7	11.7		11.8	11.5	11.7	15.8	163
3-5	2012			12.8	12.7	0.0	12.0	12.1		11.8	13.7	12.8	12.9	688
	2013			14.4	14.4	7.1	13.8	13.8		14.2	14.6	14.4	14.6	652
	2014	*		14.4	14.4	5.9	14.2	14.2		14.8	14.0	14.4	15.4	682

NUMBER TESTED IN GRADE 3-5													
2012			688	670	15	674	677		322	366	688	14,102	
2013			652	641	14	632	639		316	335	652	13,810	
2014	1		680	658	17	677	677		338	344	682	14,654	

AVERAGE PERCENTAGE OF ITEMS CORRECT BY REPORTING CATEGORY

Grade	Year	REPORTING CATEGORY		
		1. Understanding Across Genres	2. Understanding/Analysis of Literary Texts	3. Understanding/Analysis of Informational Texts
3	2012	66.4	60.7	51.0
	2013	55.5	60.0	60.2
	2014	62.9	54.0	58.0
4	2012	51.1	62.6	58.0
	2013	59.5	63.2	54.3
	2014	60.7	56.3	59.6
5	2012	57.8	65.0	61.8
	2013	61.7	61.8	70.7
	2014	56.7	65.1	64.9
3-5	2012	58.9	62.4	56.0
	2013	58.5	61.6	61.0
	2014	60.6	57.5	60.2

PERCENTAGE SATISFACTORY (Levels 2 or 3)

Grade	Year	White	African Amer	Hispanic	Econ Disadv	Special Educ	LEP	At Risk	Migrant	Male	Female	All	District	Number Tested (All Students)
4	2012			69.6	69.4	14.3	69.3	69.3		62.2	76.1	69.6	68.9	253
	2013			62.2	61.2	50.0	60.6	61.8		54.9	69.2	62.2	62.2	230
	2014			62.8	63.3	*	62.6	62.6		53.2	72.4	62.8	65.6	247

NUMBER TESTED IN GRADE 4													
2012			253	248	7	251	251		119	134	253	4,905	
2013			230	224	8	218	225		113	117	230	4,958	
2014			247	237	2	246	246		124	123	247	4,841	

NUMBER UNSATISFACTORY (Level 1)

Grade	Year	White	African Amer	Hispanic	Econ Disadv	Special Educ	LEP	At Risk	Migrant	Male	Female	All	District	Number Tested (All Students)
4	2012			77	76	6	77	77		45	32	77	1,524	253
	2013			87	87	4	86	86		51	36	87	1,876	230
	2014			92	87	*	92	92		58	34	92	1,667	247

NUMBER TESTED IN GRADE 4													
2012			253	248	7	251	251		119	134	253	4,905	
2013			230	224	8	218	225		113	117	230	4,958	
2014			247	237	2	246	246		124	123	247	4,841	

PERCENTAGE ADVANCED (Level 3)

Grade	Year	White	African Amer	Hispanic	Econ Disadv	Special Educ	LEP	At Risk	Migrant	Male	Female	All	District	Number Tested (All Students)
4	2012			4.3	4.4	0.0	4.0	4.0		3.4	5.2	4.3	4.3	253
	2013			1.3	1.3	0.0	1.4	1.3		1.8	0.9	1.3	3.6	230
	2014			4.9	4.6	*	4.9	4.9		4.8	4.9	4.9	5.9	247

NUMBER TESTED IN GRADE 4													
2012			253	248	7	251	251		119	134	253	4,905	
2013			230	224	8	218	225		113	117	230	4,958	
2014			247	237	2	246	246		124	123	247	4,841	

AVERAGE PERCENTAGE OF ITEMS CORRECT BY REPORTING CATEGORY

Grade	Year	REPORTING CATEGORY			
		1. Composition ¹ Personal Narrative	1. Composition ¹ Expository	2. Revision	3. Editing
4	2012	1.9	1.9	61.1	65.2
	2013	4.3	3.9	58.4	67.0
	2014	4.1	3.8	64.6	63.2

¹Average score points (range 0-8). A STAAR composition is rated twice on a scale of 1 to 4, and the ratings are summed to determine score points for the composition. Score point scale: 0=Non-scorable; 2=Very Limited; 3=between Very Limited and Basic; 4=Basic; 5=between Basic and Satisfactory; 6=Satisfactory; 7=between Satisfactory and Accomplished; 8=Accomplished

PERCENTAGE SATISFACTORY (Levels 2 or 3)

Grade	Year	White	African Amer	Hispanic	Econ Disadv	Special Educ	LEP	At Risk	Migrant	Male	Female	All	District	Number Tested (All Students)
3	2012			*	*	*	*	*		*	*	*	36.6	3
	2013			0.0	0.0	*	0.0	0.0		*	0.0	0.0	20.5	14
	2014			*	*		*	*			*	*	23.0	2
4	2012			*	*		*	*		*		*	28.4	1
	2013			*	*	*	*	*		*	*	*	27.3	5
	2014			*	*		*	*		*		*	22.8	3
5	2012												24.1	0
	2013			*	*		*	*		*	*	*	41.5	3
	2014			*	*		*	*			*	*	38.8	1
3-5	2012			*	*	*	*	*		*	*	*	31.7	4
	2013			4.5	4.5	*	0.0	0.0		0.0	8.3	4.5	30.9	22
	2014			33.3	*		33.3	33.3		*	*	33.3	29.2	6

NUMBER TESTED IN GRADES 3-5													
2012			4	4	1	4	4			3	1	4	259
2013			22	22	3	18	19			9	12	22	233
2014			6	5		6	6			3	3	6	295

NUMBER UNSATISFACTORY (Level 1)

Grade	Year	White	African Amer	Hispanic	Econ Disadv	Special Educ	LEP	At Risk	Migrant	Male	Female	All	District	Number Tested (All Students)
3	2012			*	*	*	*	*		*	*	*	83	3
	2013			14	14	*	13	13		*	9	14	58	14
	2014			*	*		*	*			*	*	77	2
4	2012			*	*		*	*		*		*	53	1
	2013			*	*	*	*	*		*	*	*	48	5
	2014			*	*		*	*		*		*	61	3
5	2012												41	0
	2013			*	*		*	*		*	*	*	55	3
	2014			*	*		*	*			*	*	71	1
3-5	2012			*	*	*	*	*		*	*	*	177	4
	2013			21	21	*	18	19		9	11	21	161	22
	2014			4	*		4	4		*	*	4	209	6

NUMBER TESTED IN GRADES 3-5													
2012			4	4	1	4	4			3	1	4	259
2013			22	22	3	18	19			9	12	22	233
2014			6	5		6	6			3	3	6	295

PERCENTAGE ADVANCED (Level 3)

Grade	Year	White	African Amer	Hispanic	Econ Disadv	Special Educ	LEP	At Risk	Migrant	Male	Female	All	District	Number Tested (All Students)
3	2012			*	*	*	*	*		*	*	*	0.8	3
	2013			0.0	0.0	*	0.0	0.0		*	0.0	0.0	1.4	14
	2014			*	*		*	*			*	*	0.0	2
4	2012			*	*		*	*		*		*	2.7	1
	2013			*	*	*	*	*		*	*	*	3.0	5
	2014			*	*		*	*		*		*	1.3	3
5	2012												1.9	0
	2013			*	*		*	*		*	*	*	1.1	3
	2014			*	*		*	*			*	*	0.9	1
3-5	2012			*	*	*	*	*		*	*	*	1.5	4
	2013			0.0	0.0	*	0.0	0.0		0.0	0.0	0.0	1.7	22
	2014			0.0	*		0.0	0.0		*	*	0.0	0.7	6

NUMBER TESTED IN GRADE 3-5													
2012			4	4	1	4	4			3	1	4	259
2013			22	22	3	18	19			9	12	22	233
2014			6	5		6	6			3	3	6	295

AVERAGE PERCENTAGE OF ITEMS CORRECT BY REPORTING CATEGORY

Grade	Year	REPORTING CATEGORY				
		1. Numbers, Operations, and Quantitative Reasoning	2. Patterns, Relationships, and Algebraic Reasoning	3. Geometry and Spatial Reasoning	4. Measurement	5. Probability and Statistics
3	2012	*	*	*	*	*
	2013	34.8	28.6	46.0	46.4	44.0
	2014	*	*	*	*	*
4	2012	*	*	*	*	*
	2013	*	*	*	*	*
	2014	*	*	*	*	*
5	2012					
	2013	*	*	*	*	*
	2014	*	*	*	*	*
3-5	2012	*	*	*	*	*
	2013	36.4	30.3	46.0	39.2	39.2
	2014	47.1	56.3	57.7	41.7	54.2

PERCENTAGE SATISFACTORY (Levels 2 or 3)

Grade	Year	White	African Amer	Hispanic	Econ Disadv	Special Educ	LEP	At Risk	Migrant	Male	Female	All	District	Number Tested (All Students)
5	2012			45.6	46.2	*	45.3	44.9		50.0	41.0	45.6	45.4	79
	2013			45.8	45.8	*	47.1	46.4		35.7	52.3	45.8	43.0	72
	2014			57.0	57.1	*	55.5	55.5		61.3	51.9	57.0	55.6	114

NUMBER TESTED IN GRADE 5													
2012			79	78	2	75	78		40	39	79	1,164	
2013			72	72	2	68	69		28	44	72	1,122	
2014			114	112	2	110	110		62	52	114	2,304	

NUMBER UNSATISFACTORY (Level 1)

Grade	Year	White	African Amer	Hispanic	Econ Disadv	Special Educ	LEP	At Risk	Migrant	Male	Female	All	District	Number Tested (All Students)
5	2012			43	42	*	41	43		20	23	43	636	79
	2013			39	39	*	36	37		18	21	39	640	72
	2014			49	48	*	49	49		24	25	49	1022	114

NUMBER TESTED IN GRADE 5													
2012			79	78	2	75	78		40	39	79	1,164	
2013			72	72	2	68	69		28	44	72	1,122	
2014			114	112	2	110	110		62	52	114	2,304	

PERCENTAGE ADVANCED (Level 3)

Grade	Year	White	African Amer	Hispanic	Econ Disadv	Special Educ	LEP	At Risk	Migrant	Male	Female	All	District	Number Tested (All Students)
5	2012			3.8	3.8	*	4.0	3.8		7.5	0.0	3.8	2.2	79
	2013			0.0	0.0	*	0.0	0.0		0.0	0.0	0.0	1.9	72
	2014			1.8	1.8	*	1.8	1.8		1.6	1.9	1.8	2.9	114

NUMBER TESTED IN GRADE 5													
2012			79	78	2	75	78		40	39	79	1,164	
2013			72	72	2	68	69		28	44	72	1,122	
2014			114	112	2	110	110		62	52	114	2,304	

AVERAGE PERCENTAGE OF ITEMS CORRECT BY REPORTING CATEGORY

Grade	Year	REPORTING CATEGORY			
		1. Matter and Energy	2. Force, Motion, and Energy	3. Earth and Space	4. Organisms and Environments
5	2012	71.4	67.3	60.3	60.3
	2013	59.0	59.9	53.0	53.9
	2014	64.0	61.5	58.4	62.0

PERCENTAGE SATISFACTORY (Levels 2 or 3)

Grade	Year	White	African Amer	Hispanic	Econ Disadv	Special Educ	LEP	At Risk	Migrant	Male	Female	All	District	Number Tested (All Students)
3	2012			*	*		*	*		*	*	*	51.7	4
	2013			29.2	29.2		29.2	29.8		25.0	35.0	29.2	32.5	48
	2014			*	*		*	*			*	*	35.8	1
4	2012			*	*		*	*		*	*	*	23.7	3
	2013			*	*		*	*		*		*	32.7	1
	2014			*	*		*	*		*		*	25.4	3
5	2012			*	*		*	*		*	*	*	0.0	2
	2013												23.3	0
	2014												39.7	0
3-5	2012			11.1	12.5		11.1	11.1		*	*	11.1	39.6	9
	2013			30.6	30.6		30.6	31.3		27.6	35.0	30.6	31.0	49
	2014			*	*		*	*		*	*	*	34.8	4

NUMBER TESTED IN GRADES 3-5													
2012			9	8		9	9		4	5	9	682	
2013			49	49		49	48		29	20	49	523	
2014			4	4		4	4		3	1	4	454	

PERCENTAGE SATISFACTORY (Levels 2 or 3)

Grade	Year	White	African Amer	Hispanic	Econ Disadv	Special Educ	LEP	At Risk	Migrant	Male	Female	All	District	Number Tested (All Students)
6	2012			0.0	0.0		0.0	*		*	*	0.0	22.8	6
	2013			*	*		*	*		*	*	*	30.6	4
	2014			60.0	60.0		60.0	66.7		*	*	60.0	29.0	10
7	2012			42.9	50.0		42.9	42.9		50.0	*	42.9	16.9	7
	2013			20.0	20.0		20.0	20.0		*	16.7	20.0	24.3	10
	2014			*	*		*	*		*	*	*	24.8	5
8	2012			*	*		*	*		*	*	*	0.0	2
	2013			37.5	42.9		37.5	37.5		50.0	*	37.5	25.5	8
	2014			*	*		*	*		*	*	*	33.2	4
6-8	2012			20.0	21.4		20.0	25.0		30.0	*	20.0	12.7	15
	2013			27.3	28.6		27.3	28.6		30.8	22.2	27.3	26.8	22
	2014			47.4	44.4		47.4	50.0		55.6	40.0	47.4	29.1	19

NUMBER TESTED IN GRADES 6-8													
2012			15	14		15	12		10	5	15	620	
2013			22	21		22	21		13	9	22	634	
2014			19	18		19	18		9	10	19	722	

NUMBER UNSATISFACTORY (Level 1)

Grade	Year	White	African Amer	Hispanic	Econ Disadv	Special Educ	LEP	At Risk	Migrant	Male	Female	All	District	Number Tested (All Students)
3	2012			*	*		*	*		*	*	*	221	4
	2013			34	34		34	33		21	13	34	224	48
	2014			*	*		*	*			*	*	199	1
4	2012			*	*		*	*		*	*	*	106	3
	2013			*	*		*	*		*		*	68	1
	2014			*	*		*	*		*		*	53	3
5	2012			*	*		*	*		*	*	*	85	2
	2013												69	0
	2014												44	0
3-5	2012			8	7		8	8		*	*	8	412	9
	2013			34	34		34	33		21	13	34	361	49
	2014			*	*		*	*		*	*	*	296	4

NUMBER TESTED IN GRADES 3-5													
2012			9	8		9	9		4	5	9	682	
2013			49	49		49	48		29	20	49	523	
2014			4	4		4	4		3	1	4	454	

NUMBER UNSATISFACTORY (Level 1)

Grade	Year	White	African Amer	Hispanic	Econ Disadv	Special Educ	LEP	At Risk	Migrant	Male	Female	All	District	Number Tested (All Students)
6	2012			6	6		6	*		*	*	6	146	6
	2013			*	*		*	*		*	*	*	150	4
	2014			4	4		4	3		*	*	4	171	10
7	2012			4	3		4	4		3	*	4	177	7
	2013			8	8		8	8		*	5	8	162	10
	2014			*	*		*	*		*	*	*	176	5
8	2012			*	*		*	*		*	*	*	218	2
	2013			5	4		5	5		3	*	5	152	8
	2014			*	*		*	*		*	*	*	165	4
6-8	2012			12	11		12	9		7	*	12	541	15
	2013			16	15		16	15		9	7	16	464	22
	2014			10	10		10	9		4	6	10	512	19

NUMBER TESTED IN GRADES 6-8													
2012			15	14		15	12		10	5	15	620	
2013			22	21		22	21		13	9	22	634	
2014			19	18		19	18		9	10	19	722	

PERCENTAGE ADVANCED (Level 3)

Grade	Year	White	African Amer	Hispanic	Econ Disadv	Special Educ	LEP	At Risk	Migrant	Male	Female	All	District	Number Tested (All Students)
3	2012			*	*		*	*		*	*	*	4.6	4
	2013			0.0	0.0		0.0	0.0		0.0	0.0	0.0	1.5	48
	2014			*	*		*	*			*	*	2.3	1
4	2012			*	*		*	*		*	*	*	1.4	3
	2013			*	*		*	*		*		*	2.0	1
	2014			*	*		*	*		*		*	0.0	3
5	2012			*	*		*	*		*	*	*	0.0	2
	2013												0.0	0
	2014												0.0	0
3-5	2012			0.0	0.0		0.0	0.0		*	*	0.0	3.4	9
	2013			0.0	0.0		0.0	0.0		0.0	0.0	0.0	1.3	49
	2014			*	*		*	*		*	*	*	1.5	4

NUMBER TESTED IN GRADE 3-5													
2012			9	8		9	9		4	5	9	682	
2013			49	49		49	48		29	20	49	523	
2014			4	4		4	4		3	1	4	454	

PERCENTAGE ADVANCED (Level 3)

Grade	Year	White	African Amer	Hispanic	Econ Disadv	Special Educ	LEP	At Risk	Migrant	Male	Female	All	District	Number Tested (All Students)
6	2012			0.0	0.0		0.0	*		*	*	0.0	1.1	6
	2013			*	*		*	*		*	*	*	2.3	4
	2014			0.0	0.0		0.0	0.0		*	*	0.0	3.3	10
7	2012			0.0	0.0		0.0	0.0		0.0	*	0.0	0.0	7
	2013			0.0	0.0		0.0	0.0		*	0.0	0.0	0.9	10
	2014			*	*		*	*		*	*	*	0.0	5
8	2012			*	*		*	*		*	*	*	0.0	2
	2013			0.0	0.0		0.0	0.0		0.0	*	0.0	0.0	8
	2014			*	*		*	*		*	*	*	0.4	4
6-8	2012			0.0	0.0		0.0	0.0		0.0	*	0.0	0.3	15
	2013			0.0	0.0		0.0	0.0		0.0	0.0	0.0	1.1	22
	2014			0.0	0.0		0.0	0.0		0.0	0.0	0.0	1.2	19

NUMBER TESTED IN GRADE 6-8													
2012			15	14		15	12		10	5	15	620	
2013			22	21		22	21		13	9	22	634	
2014			19	18		19	18		9	10	19	722	

AVERAGE PERCENTAGE OF ITEMS CORRECT BY REPORTING CATEGORY

Grade	Year	REPORTING CATEGORY				
		1. Numbers, Operations, and Quantitative Reasoning	2. Patterns, Relationships, and Algebraic Reasoning	3. Geometry and Spatial Reasoning	4. Measurement	5. Probability and Statistics
3	2012	*	*	*	*	*
	2013	49.4	52.1	51.6	47.7	36.5
	2014	*	*	*	*	*
4	2012	*	*	*	*	*
	2013	*	*	*	*	*
	2014	*	*	*	*	*
5	2012	*	*	*	*	*
	2013					
	2014					
3-5	2012	32.6	36.1	45.3	40.3	35.6
	2013	50.2	53.1	52.3	48.0	37.3
	2014	*	*	*	*	*

AVERAGE PERCENTAGE OF ITEMS CORRECT BY REPORTING CATEGORY

Grade	Year	REPORTING CATEGORY				
		1. Numbers, Operations, and Quantitative Reasoning	2. Patterns, Relationships, and Algebraic Reasoning	3. Geometry and Spatial Reasoning	4. Measurement	5. Probability and Statistics
6	2012	16.7	29.2	29.2	27.1	10.4
	2013	*	*	*	*	*
	2014	41.9	50.0	56.3	35.0	52.5
7	2012	31.9	30.8	67.1	51.8	28.6
	2013	23.1	27.7	35.0	26.3	32.0
	2014	*	*	*	*	*
8	2012	*	*	*	*	*
	2013	29.5	32.1	34.4	44.2	37.5
	2014	*	*	*	*	*
6-8	2012	25.2	28.9	46.3	39.6	20.8
	2013	26.9	31.1	35.8	33.7	35.0
	2014	35.1	44.9	50.3	39.8	46.6

PERCENTAGE SATISFACTORY (Levels 2 and 3)

Test	Year	White	African Amer	Hispanic	Econ Disadv	Special Educ	LEP	At Risk	Migrant	Male	Female	All	District
ALGEBRA I	2012			56.3	57.1		58.8	64.3		63.6	50.0	58.8	42.9
	2013			85.7	85.7		85.7	*		*	*	85.7	51.2
	2014			54.8	59.3		54.8	54.8		55.6	53.8	54.8	42.9
Tests Taken	2012			16	14		17	14		11	6	17	282
	2013			7	7		7	5		4	3	7	320
	2014			31	27		31	31		18	13	31	471

NUMBER UNSATISFACTORY (Level 1)

Test	Year	White	African Amer	Hispanic	Econ Disadv	Special Educ	LEP	At Risk	Migrant	Male	Female	All	District
ALGEBRA I	2012			7	6		7	5		4	3	7	161
	2013			1	1		1	*		*	*	1	156
	2014			14	11		14	14		8	6	14	269
Tests Taken	2012			16	14		17	14		11	6	17	282
	2013			7	7		7	5		4	3	7	320
	2014			31	27		31	31		18	13	31	471

PERCENTAGE ADVANCED (Level 3)

Test	Year	White	African Amer	Hispanic	Econ Disadv	Special Educ	LEP	At Risk	Migrant	Male	Female	All	District
ALGEBRA I	2012			12.5	14.3		11.8	14.3		18.2	0.0	11.8	2.5
	2013			0.0	0.0		0.0	*		*	*	0.0	4.1
	2014			12.9	14.8		12.9	12.9		5.6	23.1	12.9	2.3
Tests Taken	2012			16	14		17	14		11	6	17	282
	2013			7	7		7	5		4	3	7	320
	2014			31	27		31	31		18	13	31	471

AVERAGE PERCENTAGE OF ITEMS CORRECT BY REPORTING CATEGORY

ALGEBRA I	1. Functional Relationships	2. Properties and Attributes of Functions	3. Linear Functions	4. Linear Equations and Inequalities	5. Quadratic and Other Nonlinear Functions
2012	53.7	46.6	45.1	37.1	44.4
2013	62.5	45.2	52.4	28.6	46.0
2014	52.0	46.0	41.7	38.4	43.0

PERCENTAGE SATISFACTORY (Levels 2 or 3)

Grade	Year	White	African Amer	Hispanic	Econ Disadv	Special Educ	LEP	At Risk	Migrant	Male	Female	All	District	Number Tested (All Students)
8	2012			*	*		*	*		*	*	*	14.2	2
	2013			25.0	28.6		25.0	25.0		33.3	*	25.0	13.3	8
	2014			10.0	11.1		10.0	11.1		*	0.0	10.0	17.0	10

NUMBER TESTED IN GRADE 8													
2012			2	2		2	2		1	1	2	226	
2013			8	7		8	8		6	2	8	210	
2014			10	9		10	9		4	6	10	277	

NUMBER UNSATISFACTORY (Level 1)

Grade	Year	White	African Amer	Hispanic	Econ Disadv	Special Educ	LEP	At Risk	Migrant	Male	Female	All	District	Number Tested (All Students)
8	2012			*	*		*	*		*	*	*	194	2
	2013			6	5		6	6		4	*	6	182	8
	2014			9	8		9	8		*	6	9	230	10

NUMBER TESTED IN GRADE 8													
2012			2	2		2	2		1	1	2	226	
2013			8	7		8	8		6	2	8	210	
2014			10	9		10	9		4	6	10	277	

PERCENTAGE ADVANCED (Level 3)

Grade	Year	White	African Amer	Hispanic	Econ Disadv	Special Educ	LEP	At Risk	Migrant	Male	Female	All	District	Number Tested (All Students)
8	2012			*	*		*	*		*	*	*	0.0	2
	2013			0.0	0.0		0.0	0.0		0.0	*	0.0	0.0	8
	2014			0.0	0.0		0.0	0.0		*	0.0	0.0	0.0	10

NUMBER TESTED IN GRADE 8													
2012			2	2		2	2		1	1	2	226	
2013			8	7		8	8		6	2	8	210	
2014			10	9		10	9		4	6	10	277	

AVERAGE PERCENTAGE OF ITEMS CORRECT BY REPORTING CATEGORY

Grade	Year	REPORTING CATEGORY			
		1. Matter and Energy	2. Force, Motion, and Energy	3. Earth and Space	4. Organisms and Environments
8	2012	*	*	*	*
	2013	39.3	52.1	45.5	38.4
	2014	31.4	37.5	35.7	30.7

PERCENTAGE SATISFACTORY (Levels 2 and 3)

Test	Year	White	African Amer	Hispanic	Econ Disadv	Special Educ	LEP	At Risk	Migrant	Male	Female	All	District
BIOLOGY	2012			37.5	42.9		35.3	35.7		45.5	16.7	35.3	25.5
	2013			42.9	42.9		42.9	*		*	*	42.9	49.0
	2014			58.1	63.0		58.1	58.1		50.0	69.2	58.1	42.6
Tests Taken	2012			16	14		17	14		11	6	17	200
	2013			7	7		7	5		4	3	7	259
	2014			31	27		31	31		18	13	31	404

NUMBER UNSATISFACTORY (Level 1)

Test	Year	White	African Amer	Hispanic	Econ Disadv	Special Educ	LEP	At Risk	Migrant	Male	Female	All	District
BIOLOGY	2012			10	8		11	9		6	5	11	149
	2013			4	4		4	*		*	*	4	132
	2014			13	10		13	13		9	4	13	232
Tests Taken	2012			16	14		17	14		11	6	17	200
	2013			7	7		7	5		4	3	7	259
	2014			31	27		31	31		18	13	31	404

PERCENTAGE ADVANCED (Level 3)

Test	Year	White	African Amer	Hispanic	Econ Disadv	Special Educ	LEP	At Risk	Migrant	Male	Female	All	District
BIOLOGY	2012			0.0	0.0		0.0	0.0		0.0	0.0	0.0	0.0
	2013			0.0	0.0		0.0	*		*	*	0.0	0.0
	2014			3.2	3.7		3.2	3.2		5.6	0.0	3.2	0.2
Tests Taken	2012			16	14		17	14		11	6	17	200
	2013			7	7		7	5		4	3	7	259
	2014			31	27		31	31		18	13	31	404

AVERAGE PERCENTAGE OF ITEMS CORRECT BY REPORTING CATEGORY

BIOLOGY	1. Cell Structure and Function	2. Mechanisms of Genetics	3. Biological Evolution and Classification	4. Biological Processes and Systems	5. Interdependence within Environmental Systems
2012	42.8	32.1	43.5	33.7	26.7
2013	27.3	32.5	37.1	31.2	33.8
2014	41.3	43.7	47.4	40.2	45.2

PERCENTAGE SATISFACTORY (Levels 2 or 3)

Grade	Year	White	African Amer	Hispanic	Econ Disadv	Special Educ	LEP	At Risk	Migrant	Male	Female	All	District	Number Tested (All Students)
8	2012			*	*		*	*		*	*	*	11.1	2
	2013			12.5	14.3		12.5	12.5		16.7	*	12.5	18.6	8
	2014			0.0	0.0		0.0	0.0		*	0.0	0.0	11.0	10

NUMBER TESTED IN GRADE 8													
2012			2	2		2	2		1	1	2	226	
2013			8	7		8	8		6	2	8	204	
2014			10	9		10	9		4	6	10	272	

NUMBER UNSATISFACTORY (Level 1)

Grade	Year	White	African Amer	Hispanic	Econ Disadv	Special Educ	LEP	At Risk	Migrant	Male	Female	All	District	Number Tested (All Students)
8	2012			*	*		*	*		*	*	*	201	2
	2013			7	6		7	7		5	*	7	166	8
	2014			10	9		10	9		*	6	10	242	10

NUMBER TESTED IN GRADE8														
2012			2	2		2	2		1	1	2	226		
2013			8	7		8	8		6	2	8	204		
2014			10	9		10	9		4	6	10	272		

PERCENTAGE ADVANCED (Level 3)

Grade	Year	White	African Amer	Hispanic	Econ Disadv	Special Educ	LEP	At Risk	Migrant	Male	Female	All	District	Number Tested (All Students)
8	2012			*	*		*	*		*	*	*	0.0	2
	2013			0.0	0.0		0.0	0.0		0.0	*	0.0	1.0	8
	2014			0.0	0.0		0.0	0.0		*	0.0	0.0	0.4	10

NUMBER TESTED IN GRADE 8													
2012			2	2		2	2		1	1	2	226	
2013			8	7		8	8		6	2	8	204	
2014			10	9		10	9		4	6	10	272	

AVERAGE PERCENTAGE OF ITEMS CORRECT BY REPORTING CATEGORY

Grade	Year	REPORTING CATEGORY			
		1. History	2. Geography and Culture	3. Government and Citizenship	4. Economics, Science, Technology, and Society
8	2012	*	*	*	*
	2013	29.4	30.2	35.4	26.6
	2014	33.0	34.2	24.2	28.8

PERCENTAGE SATISFACTORY (Levels 2 or 3)

Grade	Year	White	African Amer	Hispanic	Econ Disadv	Special Educ	LEP	At Risk	Migrant	Male	Female	All	District	Number Tested (All Students)
3	2012	*	*	20.0	23.1	23.1	*	23.1		33.3	14.3	23.1	54.7	13
	2013			82.4	82.4	82.4	88.9	82.4		84.6	*	82.4	67.5	17
	2014	*		44.4	50.0	50.0	*	50.0		*	66.7	50.0	63.3	10
4	2012		*	40.0	40.0	45.5	*	45.5		55.6	*	45.5	58.0	11
	2013		*	75.0	71.4	71.4	71.4	66.7		62.5	83.3	71.4	60.2	14
	2014			68.8	64.3	68.8	80.0	68.8		72.7	*	68.8	62.9	16
5	2012			69.2	71.4	71.4	42.9	63.6		*	55.6	71.4	67.0	14
	2013		*	94.1	94.1	94.7	91.7	94.4		90.9	100.0	94.7	86.5	19
	2014		*	81.3	76.5	77.8	80.0	77.8		80.0	75.0	77.8	86.3	18
3-5	2012	*	*	45.5	45.9	47.4	35.3	42.9		60.0	33.3	47.4	61.0	38
	2013		*	84.8	83.3	84.0	85.7	83.0		81.3	88.9	84.0	73.4	50
	2014	*	*	68.3	66.7	68.2	69.6	68.2		68.0	68.4	68.2	73.2	44

NUMBER TESTED IN GRADES 3-5													
2012	1	3	33	37	38	17	35		20	18	38	1,384	
2013		4	46	48	50	28	47		32	18	50	1,434	
2014	1	2	41	39	44	23	44		25	19	44	1,362	

PERCENTAGE SATISFACTORY (Levels 2 or 3)

Grade	Year	White	African Amer	Hispanic	Econ Disadv	Special Educ	LEP	At Risk	Migrant	Male	Female	All	District	Number Tested (All Students)
6	2012		*	66.7	50.0	54.5	*	54.5		42.9	*	54.5	65.5	11
	2013		*	66.7	72.7	72.7	57.1	72.7		*	66.7	72.7	55.9	11
	2014		*	61.5	64.3	64.3	54.5	64.3		60.0	*	64.3	51.6	14
7	2012	*		72.2	77.8	73.7	61.5	73.7		71.4	*	73.7	57.3	19
	2013		*	66.7	61.5	57.1	71.4	61.5		54.5	*	57.1	61.0	14
	2014		*	53.3	50.0	47.1	60.0	53.3		55.6	37.5	47.1	55.4	17
8	2012		*	40.0	33.3	36.4	37.5	36.4		16.7	*	36.4	58.0	11
	2013	*	*	80.0	76.5	76.5	75.0	81.3		75.0	*	76.5	74.5	17
	2014		*	54.5	41.7	46.2	71.4	46.2		45.5	*	46.2	75.0	13
6-8	2012	*	*	62.2	59.5	58.5	50.0	58.5		51.9	71.4	58.5	60.3	41
	2013	*	*	72.2	70.7	69.0	69.2	72.5		67.9	71.4	69.0	63.6	42
	2014		*	56.4	52.4	52.3	60.7	54.8		53.3	50.0	52.3	60.0	44

NUMBER TESTED IN GRADES 6-8													
2012	1	3	37	37	41	26	41			27	14	41	1,571
2013	1	5	36	41	42	26	40			28	14	42	1,687
2014		5	39	42	44	28	42			30	14	44	1,689

NUMBER UNSATISFACTORY (Level 1)

Grade	Year	White	African Amer	Hispanic	Econ Disadv	Special Educ	LEP	At Risk	Migrant	Male	Female	All	District	Number Tested (All Students)
3	2012	*	*	8	10	10	*	10		4	6	10	149	13
	2013			3	3	3	1	3		2	*	3	114	17
	2014	*		5	4	5	*	5		*	2	5	114	10
4	2012		*	6	6	6	*	6		4	*	6	201	11
	2013		*	3	4	4	2	4		3	1	4	184	14
	2014			5	5	5	2	5		3	*	5	170	16
5	2012			4	4	4	4	4		*	4	4	190	14
	2013		*	1	1	1	1	1		1	0	1	84	19
	2014		*	3	4	4	2	4		2	2	4	81	18
3-5	2012	*	*	18	20	20	11	20		8	12	20	540	38
	2013		*	7	8	8	4	8		6	2	8	382	50
	2014	*	*	13	13	14	7	14		8	6	14	365	44

NUMBER TESTED IN GRADES 3-5													
2012	1	3	33	37	38	17	35		20	18	38	1,384	
2013		4	46	48	50	28	47		32	18	50	1,434	
2014	1	2	41	39	44	23	44		25	19	44	1,362	

NUMBER UNSATISFACTORY (Level 1)

Grade	Year	White	African Amer	Hispanic	Econ Disadv	Special Educ	LEP	At Risk	Migrant	Male	Female	All	District	Number Tested (All Students)
6	2012		*	3	5	5	*	5		4	*	5	181	11
	2013		*	3	3	3	3	3		*	2	3	270	11
	2014		*	5	5	5	5	5		4	*	5	281	14
7	2012	*		5	4	5	5	5		4	*	5	244	19
	2013		*	4	5	6	2	5		5	*	6	202	14
	2014		*	7	8	9	4	7		4	5	9	266	17
8	2012		*	6	6	7	5	7		5	*	7	199	11
	2013	*	*	3	4	4	3	3		3	*	4	142	17
	2014		*	5	7	7	2	7		6	*	7	128	13
6-8	2012	*	*	14	15	17	13	17		13	4	17	624	41
	2013	*	*	10	12	13	8	11		9	4	13	614	42
	2014		*	17	20	21	11	19		14	7	21	675	44

NUMBER TESTED IN GRADES 6-8													
2012	1	3	37	37	41	26	41			27	14	41	1,571
2013	1	5	36	41	42	26	40			28	14	42	1,687
2014		5	39	42	44	28	42			30	14	44	1,689

PERCENTAGE ADVANCED (Level 3)

Grade	Year	White	African Amer	Hispanic	Econ Disadv	Special Educ	LEP	At Risk	Migrant	Male	Female	All	District	Number Tested (All Students)
3	2012	*	*	0.0	7.7	7.7	*	7.7		0.0	14.3	7.7	3.3	13
	2013			0.0	0.0	0.0	0.0	0.0		0.0	*	0.0	4.3	17
	2014	*		0.0	0.0	0.0	*	0.0		*	0.0	0.0	4.8	10
4	2012		*	0.0	0.0	0.0	*	0.0		0.0	*	0.0	3.3	11
	2013		*	0.0	0.0	0.0	0.0	0.0		0.0	0.0	0.0	3.5	14
	2014			6.3	7.1	6.3	10.0	6.3		9.1	*	6.3	6.3	16
5	2012			0.0	0.0	0.0	0.0	0.0		*	0.0	0.0	4.9	14
	2013		*	0.0	0.0	0.0	0.0	0.0		0.0	0.0	0.0	7.4	19
	2014		*	6.3	11.8	11.1	10.0	11.1		10.0	12.5	11.1	10.3	18
3-5	2012	*	*	0.0	2.7	2.6	0.0	2.9		0.0	5.6	2.6	4.0	38
	2013		*	0.0	0.0	0.0	0.0	0.0		0.0	0.0	0.0	5.4	50
	2014	*	*	4.9	7.7	6.8	8.7	6.8		8.0	5.3	6.8	7.7	44

NUMBER TESTED IN GRADE 3-5													
2012	1	3	33	37	38	17	35		20	18	38	1,384	
2013		4	46	48	50	28	47		32	18	50	1,434	
2014	1	2	41	39	44	23	44		25	19	44	1,362	

PERCENTAGE ADVANCED (Level 3)

Grade	Year	White	African Amer	Hispanic	Econ Disadv	Special Educ	LEP	At Risk	Migrant	Male	Female	All	District	Number Tested (All Students)
6	2012		*	0.0	0.0	0.0	*	0.0		0.0	*	0.0	3.6	11
	2013		*	0.0	0.0	0.0	0.0	0.0		*	0.0	0.0	3.1	11
	2014		*	7.7	7.1	7.1	9.1	7.1		10.0	*	7.1	2.9	14
7	2012	*		0.0	0.0	0.0	0.0	0.0		0.0	*	0.0	1.0	19
	2013		*	0.0	0.0	0.0	0.0	0.0		0.0	*	0.0	3.5	14
	2014		*	0.0	0.0	0.0	0.0	0.0		0.0	0.0	0.0	3.9	17
8	2012		*	0.0	0.0	0.0	0.0	0.0		0.0	*	0.0	1.1	11
	2013	*	*	0.0	0.0	0.0	0.0	0.0		0.0	*	0.0	2.5	17
	2014		*	0.0	0.0	0.0	0.0	0.0		0.0	*	0.0	2.9	13
6-8	2012	*	*	0.0	0.0	0.0	0.0	0.0		0.0	0.0	0.0	1.9	41
	2013	*	*	0.0	0.0	0.0	0.0	0.0		0.0	0.0	0.0	3.0	42
	2014		*	2.6	2.4	2.3	3.6	2.4		3.3	0.0	2.3	3.3	44

NUMBER TESTED IN GRADE 6-8													
2012	1	3	37	37	41	26	41		27	14	41	1,571	
2013	1	5	36	41	42	26	40		28	14	42	1,687	
2014		5	39	42	44	28	42		30	14	44	1,689	

AVERAGE PERCENTAGE OF ITEMS CORRECT BY REPORTING CATEGORY

Grade	Year	REPORTING CATEGORY		
		1. Understanding Across Genres (GR 3-5) 1. Understanding/Analysis Across Genres (GR 6-8)	2. Understanding/Analysis of Literary Texts	3. Understanding/Analysis of Informational Texts
3	2012	27.7	51.1	40.8
	2013	57.6	61.3	50.2
	2014	40.0	53.6	50.8
4	2012	50.0	40.9	48.3
	2013	44.6	57.7	57.7
	2014	50.8	65.6	54.8
5	2012	44.6	47.1	51.5
	2013	52.0	57.9	53.0
	2014	47.9	60.4	55.6
3-5	2012	40.4	46.7	46.9
	2013	51.9	59.0	53.4
	2014	47.2	60.7	54.2

AVERAGE PERCENTAGE OF ITEMS CORRECT BY REPORTING CATEGORY

Grade	Year	REPORTING CATEGORY		
		1. Understanding Across Genres (GR 3-5) 1. Understanding/Analysis Across Genres (GR 6-8)	2. Understanding/Analysis of Literary Texts	3. Understanding/Analysis of Informational Texts
6	2012	44.3	60.8	44.8
	2013	53.4	56.3	56.5
	2014	53.6	56.7	58.7
7	2012	50.0	48.9	40.7
	2013	41.1	48.3	54.3
	2014	42.6	53.6	43.1
8	2012	38.6	44.9	42.0
	2013	66.2	55.2	53.3
	2014	57.7	47.0	48.6
6-8	2012	45.4	51.0	42.2
	2013	54.5	53.2	54.5
	2014	50.6	52.7	49.7

PERCENTAGE SATISFACTORY (Levels 2 and 3)

Test	Year	White	African Amer	Hispanic	Econ Disadv	Special Educ	LEP	At Risk	Migrant	Male	Female	All	District
ENGLISH I	2012												
	2013												
	2014	*	*	76.0	70.4	70.4	73.3	68.0		68.4	75.0	70.4	50.6
Tests Taken	2012												
	2013												
	2014	1	1	25	27	27	15	25		19	8	27	405
ENGLISH II	2012												
	2013												
	2014		*	64.3	69.2	66.7	66.7	66.7		63.6	*	66.7	65.3
Tests Taken	2012												
	2013												
	2014		1	14	13	15	9	15		11	4	15	340

NUMBER UNSATISFACTORY (Level 1)

Test	Year	White	African Amer	Hispanic	Econ Disadv	Special Educ	LEP	At Risk	Migrant	Male	Female	All	District
ENGLISH I	2012												
	2013												
	2014	*	*	6	8	8	4	8		6	2	8	200
Tests Taken	2012												
	2013												
	2014	1	1	25	27	27	15	25		19	8	27	405
ENGLISH II	2012												
	2013												
	2014		*	5	4	5	3	5		4	*	5	118
Tests Taken	2012												
	2013												
	2014		1	14	13	15	9	15		11	4	15	340

PERCENTAGE ADVANCED (Level 3)

Test	Year	White	African Amer	Hispanic	Econ Disadv	Special Educ	LEP	At Risk	Migrant	Male	Female	All	District
ENGLISH I	2012												
	2013												
	2014	*	*	0.0	0.0	0.0	0.0	0.0		0.0	0.0	0.0	3.5
Tests Taken	2012												
	2013												
	2014	1	1	25	27	27	15	25		19	8	27	405
ENGLISH II	2012												
	2013												
	2014		*	7.1	7.7	6.7	11.1	6.7		0.0	*	6.7	12.6
Tests Taken	2012												
	2013												
	2014		1	14	13	15	9	15		11	4	15	340

AVERAGE PERCENTAGE OF ITEMS CORRECT BY REPORTING CATEGORY

ENGLISH I	1. Understanding & Analysis Across Genres	2. Understanding & Analysis of Literary Texts	3. Understanding & Analysis of Informational Texts	4. Literary Composition ¹	5. Revision	6. Editing
2012						
2013						
2014	68.5	53.5	64.2	3.0	48.1	65.8

ENGLISH II	1. Understanding & Analysis Across Genres	2. Understanding & Analysis of Literary Texts	3. Understanding & Analysis of Informational Texts	4. Expository Composition ¹	5. Revision	6. Editing
2012						
2013						
2014	51.7	51.9	47.4	2.3	53.3	60.0

¹Average score points (range 0-6). A STAAR M composition is rated twice on a scale of 0 to 3, and the ratings are summed to determine score points for the composition. Score point scale: 0=Non-scorable; 2=Very Limited; 3=between Very Limited and Basic; 4=Basic; 5=between Basic and Satisfactory; 6=Satisfactory

PERCENTAGE SATISFACTORY (Levels 2 or 3)

Grade	Year	White	African Amer	Hispanic	Econ Disadv	Special Educ	LEP	At Risk	Migrant	Male	Female	All	District	Number Tested (All Students)
4	2012		*	20.0	30.0	27.3	*	27.3		33.3	*	27.3	57.5	11
	2013		*	69.2	73.3	73.3	71.4	75.0		77.8	66.7	73.3	48.9	15
	2014			60.0	53.8	60.0	70.0	60.0		63.6	*	60.0	47.7	15

NUMBER TESTED IN GRADE 4													
2012		1	10	10	11	5	11		9	2	11	475	
2013		2	13	15	15	7	12		9	6	15	452	
2014			15	13	15	10	15		11	4	15	449	

PERCENTAGE SATISFACTORY (Levels 2 or 3)

Grade	Year	White	African Amer	Hispanic	Econ Disadv	Special Educ	LEP	At Risk	Migrant	Male	Female	All	District	Number Tested (All Students)
7	2012	*		66.7	72.2	68.4	64.3	68.4		78.6	*	68.4	56.7	19
	2013		*	41.7	38.5	35.7	28.6	38.5		27.3	*	35.7	63.7	14
	2014		*	57.1	60.0	56.3	55.6	57.1		66.7	42.9	56.3	62.9	16

NUMBER TESTED IN GRADE 7													
2012	1		18	18	19	14	19		14	5	19	586	
2013		2	12	13	14	7	13		11	3	14	509	
2014		2	14	15	16	9	14		9	7	16	599	

NUMBER UNSATISFACTORY (Level 1)

Grade	Year	White	African Amer	Hispanic	Econ Disadv	Special Educ	LEP	At Risk	Migrant	Male	Female	All	District	Number Tested (All Students)
4	2012		*	8	7	8	*	8		6	*	8	202	11
	2013		*	4	4	4	2	3		2	2	4	231	15
	2014			6	6	6	3	6		4	*	6	235	15

NUMBER TESTED IN GRADE 4													
2012		1	10	10	11	5	11		9	2	11	475	
2013		2	13	15	15	7	12		9	6	15	452	
2014			15	13	15	10	15		11	4	15	449	

NUMBER UNSATISFACTORY (Level 1)

Grade	Year	White	African Amer	Hispanic	Econ Disadv	Special Educ	LEP	At Risk	Migrant	Male	Female	All	District	Number Tested (All Students)
7	2012	*		6	5	6	5	6		3	*	6	254	19
	2013		*	7	8	9	5	8		8	*	9	185	14
	2014		*	6	6	7	4	6		3	4	7	222	16

NUMBER TESTED IN GRADE 7													
2012	1		18	18	19	14	19		14	5	19	586	
2013		2	12	13	14	7	13		11	3	14	509	
2014		2	14	15	16	9	14		9	7	16	599	

PERCENTAGE ADVANCED (Level 3)

Grade	Year	White	African Amer	Hispanic	Econ Disadv	Special Educ	LEP	At Risk	Migrant	Male	Female	All	District	Number Tested (All Students)
4	2012		*	0.0	0.0	0.0	*	0.0		0.0	*	0.0	5.3	11
	2013		*	0.0	0.0	0.0	0.0	0.0		0.0	0.0	0.0	8.6	15
	2014			6.7	7.7	6.7	10.0	6.7		9.1	*	6.7	8.5	15

NUMBER TESTED IN GRADE 4													
2012		1	10	10	11	5	11		9	2	11	475	
2013		2	13	15	15	7	12		9	6	15	452	
2014			15	13	15	10	15		11	4	15	449	

PERCENTAGE ADVANCED (Level 3)

Grade	Year	White	African Amer	Hispanic	Econ Disadv	Special Educ	LEP	At Risk	Migrant	Male	Female	All	District	Number Tested (All Students)
7	2012	*		0.0	0.0	0.0	0.0	0.0		0.0	*	0.0	2.7	19
	2013		*	0.0	0.0	0.0	0.0	0.0		0.0	*	0.0	6.3	14
	2014		*	0.0	0.0	0.0	0.0	0.0		0.0	0.0	0.0	6.3	16

NUMBER TESTED IN GRADE 7													
2012	1		18	18	19	14	19		14	5	19	586	
2013		2	12	13	14	7	13		11	3	14	509	
2014		2	14	15	16	9	14		9	7	16	599	

AVERAGE PERCENTAGE OF ITEMS CORRECT BY REPORTING CATEGORY

Grade	Year	REPORTING CATEGORY		
		1. Composition ¹ GR 4: Personal Narrative GR 7: Expository	2. Revision	3. Editing
4	2012	0.7	29.9	37.6
	2013	2.3	61.9	55.1
	2014	2.8	55.2	50.2
7	2012	0.9	43.7	54.0
	2013	1.8	55.5	47.4
	2014	2.3	55.8	48.7

¹Average score points (range 0-6). A STAAR M composition is rated twice on a scale of 0 to 3, and the ratings are summed to determine score points for the composition. Score point scale: 0=Non-scorable; 2=Very Limited; 3=between Very Limited and Basic; 4=Basic; 5=between Basic and Satisfactory; 6=Satisfactory

PERCENTAGE SATISFACTORY (Levels 2 or 3)

Grade	Year	White	African Amer	Hispanic	Econ Disadv	Special Educ	LEP	At Risk	Migrant	Male	Female	All	District	Number Tested (All Students)
3	2012		*	63.6	53.8	53.8	83.3	53.8		66.7	42.9	53.8	52.0	13
	2013			88.9	88.9	88.9	83.3	88.9		100.0	*	88.9	64.4	9
	2014	*		72.7	80.0	75.0	*	75.0		*	87.5	75.0	64.2	12
4	2012		*	63.6	54.5	58.3	66.7	58.3		70.0	*	58.3	61.2	12
	2013		*	61.5	60.0	60.0	50.0	53.8		44.4	83.3	60.0	61.7	15
	2014			76.9	83.3	76.9	71.4	76.9		87.5	*	76.9	70.3	13
5	2012			84.6	78.6	78.6	71.4	72.7		*	88.9	78.6	60.6	14
	2013		*	86.7	80.0	82.4	88.9	86.7		90.9	66.7	82.4	77.2	17
	2014		*	73.3	68.8	70.6	70.0	70.6		70.0	71.4	70.6	79.1	17
3-5	2012		*	71.4	63.2	64.1	73.7	61.1		66.7	61.1	64.1	58.7	39
	2013		*	78.4	74.4	75.6	73.9	75.7		76.9	73.3	75.6	69.1	41
	2014	*	*	74.4	76.3	73.8	68.2	73.8		72.7	75.0	73.8	72.7	42

NUMBER TESTED IN GRADES 3-5													
2012		3	35	38	39	19	36		21	18	39	1,354	
2013		4	37	39	41	23	37		26	15	41	1,433	
2014	1	2	39	38	42	22	42		22	20	42	1,378	

PERCENTAGE SATISFACTORY (Levels 2 or 3)

Grade	Year	White	African Amer	Hispanic	Econ Disadv	Special Educ	LEP	At Risk	Migrant	Male	Female	All	District	Number Tested (All Students)
6	2012		*	44.4	30.0	36.4	*	36.4		28.6	*	36.4	46.2	11
	2013		*	62.5	70.0	70.0	50.0	70.0		*	*	70.0	54.3	10
	2014		*	84.6	85.7	85.7	80.0	83.3		83.3	*	85.7	52.0	14
7	2012	*		61.1	66.7	63.2	58.3	61.1		61.5	66.7	63.2	50.5	19
	2013		*	25.0	23.1	21.4	28.6	23.1		18.2	*	21.4	49.4	14
	2014		*	35.7	33.3	31.3	33.3	28.6		44.4	14.3	31.3	48.8	16
8	2012		*	30.0	33.3	36.4	25.0	36.4		33.3	*	36.4	46.2	11
	2013	*	*	66.7	65.0	65.0	53.8	66.7		50.0	87.5	65.0	71.4	20
	2014		*	81.8	83.3	84.6	85.7	84.6		81.8	*	84.6	71.0	13
6-8	2012	*	*	48.6	48.6	48.8	44.0	47.5		46.2	53.3	48.8	47.7	41
	2013	*	*	52.6	53.5	52.3	46.2	53.7		42.9	68.8	52.3	58.5	44
	2014		*	65.8	65.9	65.1	65.4	64.1		71.9	45.5	65.1	56.7	43

NUMBER TESTED IN GRADES 6-8													
2012	1	3	37	37	41	25	40		26	15	41	1,554	
2013	1	5	38	43	44	26	41		28	16	44	1,659	
2014		5	38	41	43	26	39		32	11	43	1,684	

NUMBER UNSATISFACTORY (Level 1)

Grade	Year	White	African Amer	Hispanic	Econ Disadv	Special Educ	LEP	At Risk	Migrant	Male	Female	All	District	Number Tested (All Students)
3	2012		*	4	6	6	1	6		2	4	6	157	13
	2013			1	1	1	1	1		0	*	1	120	9
	2014	*		3	2	3	*	3		*	1	3	113	12
4	2012		*	4	5	5	2	5		3	*	5	182	12
	2013		*	5	6	6	4	6		5	1	6	181	15
	2014			3	2	3	2	3		1	*	3	138	13
5	2012			2	3	3	2	3		*	1	3	220	14
	2013		*	2	3	3	1	2		1	2	3	142	17
	2014		*	4	5	5	3	5		3	2	5	125	17
3-5	2012		*	10	14	14	5	14		7	7	14	559	39
	2013		*	8	10	10	6	9		6	4	10	443	41
	2014	*	*	10	9	11	7	11		6	5	11	376	42

NUMBER TESTED IN GRADES 3-5													
2012		3	35	38	39	19	36		21	18	39	1,354	
2013		4	37	39	41	23	37		26	15	41	1,433	
2014	1	2	39	38	42	22	42		22	20	42	1,378	

NUMBER UNSATISFACTORY (Level 1)

Grade	Year	White	African Amer	Hispanic	Econ Disadv	Special Educ	LEP	At Risk	Migrant	Male	Female	All	District	Number Tested (All Students)
6	2012		*	5	7	7	*	7		5	*	7	276	11
	2013		*	3	3	3	3	3		*	*	3	272	10
	2014		*	2	2	2	2	2		2	*	2	271	14
7	2012	*		7	6	7	5	7		5	2	7	276	19
	2013		*	9	10	11	5	10		9	*	11	257	14
	2014		*	9	10	11	6	10		5	6	11	310	16
8	2012		*	7	6	7	6	7		4	*	7	260	11
	2013	*	*	6	7	7	6	6		6	1	7	159	20
	2014		*	2	2	2	1	2		2	*	2	149	13
6-8	2012	*	*	19	19	21	14	21		14	7	21	812	41
	2013	*	*	18	20	21	14	19		16	5	21	688	44
	2014		*	13	14	15	9	14		9	6	15	730	43

NUMBER TESTED IN GRADES 6-8													
2012	1	3	37	37	41	25	40			26	15	41	1,554
2013	1	5	38	43	44	26	41			28	16	44	1,659
2014		5	38	41	43	26	39			32	11	43	1,684

PERCENTAGE ADVANCED (Level 3)

Grade	Year	White	African Amer	Hispanic	Econ Disadv	Special Educ	LEP	At Risk	Migrant	Male	Female	All	District	Number Tested (All Students)
3	2012		*	0.0	0.0	0.0	0.0	0.0		0.0	0.0	0.0	4.0	13
	2013			33.3	33.3	33.3	33.3	33.3		50.0	*	33.3	7.4	9
	2014	*		18.2	20.0	16.7	*	16.7		*	12.5	16.7	7.6	12
4	2012		*	0.0	0.0	0.0	0.0	0.0		0.0	*	0.0	1.7	12
	2013		*	0.0	0.0	0.0	0.0	0.0		0.0	0.0	0.0	4.7	15
	2014			0.0	0.0	0.0	0.0	0.0		0.0	*	0.0	6.5	13
5	2012			0.0	0.0	0.0	0.0	0.0		*	0.0	0.0	0.7	14
	2013		*	0.0	0.0	0.0	0.0	0.0		0.0	0.0	0.0	3.9	17
	2014		*	6.7	6.3	5.9	10.0	5.9		10.0	0.0	5.9	6.0	17
3-5	2012		*	0.0	0.0	0.0	0.0	0.0		0.0	0.0	0.0	1.8	39
	2013		*	8.1	7.7	7.3	8.7	8.1		11.5	0.0	7.3	5.0	41
	2014	*	*	7.7	7.9	7.1	4.5	7.1		9.1	5.0	7.1	6.5	42

NUMBER TESTED IN GRADE 3-5													
2012		3	35	38	39	19	36		21	18	39	1,354	
2013		4	37	39	41	23	37		26	15	41	1,433	
2014	1	2	39	38	42	22	42		22	20	42	1,378	

PERCENTAGE ADVANCED (Level 3)

Grade	Year	White	African Amer	Hispanic	Econ Disadv	Special Educ	LEP	At Risk	Migrant	Male	Female	All	District	Number Tested (All Students)
6	2012		*	0.0	0.0	0.0	*	0.0		0.0	*	0.0	5.5	11
	2013		*	0.0	0.0	0.0	0.0	0.0		*	*	0.0	4.9	10
	2014		*	0.0	0.0	0.0	0.0	0.0		0.0	*	0.0	3.4	14
7	2012	*		0.0	0.0	0.0	0.0	0.0		0.0	0.0	0.0	1.1	19
	2013		*	0.0	0.0	0.0	0.0	0.0		0.0	*	0.0	3.0	14
	2014		*	0.0	0.0	0.0	0.0	0.0		0.0	0.0	0.0	2.3	16
8	2012		*	0.0	0.0	0.0	0.0	0.0		0.0	*	0.0	1.2	11
	2013	*	*	0.0	0.0	0.0	0.0	0.0		0.0	0.0	0.0	2.2	20
	2014		*	0.0	0.0	0.0	0.0	0.0		0.0	*	0.0	1.9	13
6-8	2012	*	*	0.0	0.0	0.0	0.0	0.0		0.0	0.0	0.0	2.6	41
	2013	*	*	0.0	0.0	0.0	0.0	0.0		0.0	0.0	0.0	3.4	44
	2014		*	0.0	0.0	0.0	0.0	0.0		0.0	0.0	0.0	2.6	43

NUMBER TESTED IN GRADE 6-8													
2012	1	3	37	37	41	25	40			26	15	41	1,554
2013	1	5	38	43	44	26	41			28	16	44	1,659
2014		5	38	41	43	26	39			32	11	43	1,684

AVERAGE PERCENTAGE OF ITEMS CORRECT BY REPORTING CATEGORY

Grade	Year	REPORTING CATEGORY				
		1. Numbers, Operations, and Quantitative Reasoning	2. Patterns, Relationships, and Algebraic Reasoning	3. Geometry and Spatial Reasoning	4. Measurement	5. Probability and Statistics
3	2012	36.7	53.8	54.9	50.0	43.1
	2013	71.8	72.2	84.1	77.8	82.2
	2014	68.6	68.1	69.0	70.8	61.7
4	2012	42.9	61.7	41.7	41.7	45.8
	2013	53.3	50.7	46.7	46.7	38.3
	2014	63.9	66.2	56.9	59.0	50.0
5	2012	42.9	42.9	50.0	41.7	33.3
	2013	52.1	52.9	43.1	50.0	49.0
	2014	54.6	58.8	55.9	54.9	51.0
3-5	2012	40.8	52.3	49.1	44.4	40.4
	2013	56.9	56.3	53.4	54.9	52.4
	2014	61.5	63.7	60.0	60.7	53.7

AVERAGE PERCENTAGE OF ITEMS CORRECT BY REPORTING CATEGORY

Grade	Year	REPORTING CATEGORY				
		1. Numbers, Operations, and Quantitative Reasoning	2. Patterns, Relationships, and Algebraic Reasoning	3. Geometry and Spatial Reasoning	4. Measurement	5. Probability and Statistics
6	2012	35.7	35.5	48.5	34.8	42.4
	2013	60.0	43.0	61.7	46.7	70.0
	2014	57.1	51.4	53.6	42.9	61.9
7	2012	37.8	35.3	47.4	26.3	46.1
	2013	31.2	40.7	49.1	36.9	41.1
	2014	44.3	37.5	47.7	35.4	36.7
8	2012	37.3	25.6	33.3	34.5	37.5
	2013	40.0	46.8	42.5	51.0	55.0
	2014	40.0	58.7	56.4	48.5	52.9
6-8	2012	37.1	32.7	43.9	30.8	42.8
	2013	41.7	44.0	49.0	45.5	54.0
	2014	47.2	48.5	52.2	41.8	49.8

PERCENTAGE SATISFACTORY (Levels 2 and 3)

Test	Year	White	African Amer	Hispanic	Econ Disadv	Special Educ	LEP	At Risk	Migrant	Male	Female	All	District
ALGEBRA I	2012			33.3	30.0	38.5	25.0	38.5		44.4	*	38.5	32.5
	2013		*	40.0	37.5	36.4	37.5	36.4		25.0	*	36.4	36.9
	2014	*	*	60.0	59.3	59.3	56.3	60.0		61.1	55.6	59.3	46.1
Tests Taken	2012			12	10	13	8	13		9	4	13	280
	2013		1	10	8	11	8	11		8	3	11	339
	2014	1	1	25	27	27	16	25		18	9	27	360

NUMBER UNSATISFACTORY (Level 1)

Test	Year	White	African Amer	Hispanic	Econ Disadv	Special Educ	LEP	At Risk	Migrant	Male	Female	All	District
ALGEBRA I	2012			8	7	8	6	8		5	*	8	189
	2013		*	6	5	7	5	7		6	*	7	214
	2014	*	*	10	11	11	7	10		7	4	11	194
Tests Taken	2012			12	10	13	8	13		9	4	13	280
	2013		1	10	8	11	8	11		8	3	11	339
	2014	1	1	25	27	27	16	25		18	9	27	360

PERCENTAGE ADVANCED (Level 3)

Test	Year	White	African Amer	Hispanic	Econ Disadv	Special Educ	LEP	At Risk	Migrant	Male	Female	All	District
ALGEBRA I	2012			0.0	0.0	0.0	0.0	0.0		0.0	*	0.0	0.4
	2013		*	0.0	0.0	0.0	0.0	0.0		0.0	*	0.0	0.0
	2014	*	*	0.0	0.0	0.0	0.0	0.0		0.0	0.0	0.0	1.4
Tests Taken	2012			12	10	13	8	13		9	4	13	280
	2013		1	10	8	11	8	11		8	3	11	339
	2014	1	1	25	27	27	16	25		18	9	27	360

AVERAGE PERCENTAGE OF ITEMS CORRECT BY REPORTING CATEGORY

ALGEBRA I	1. Functional Relationships	2. Properties and Attributes of Functions	3. Linear Functions	4. Linear Equations and Inequalities	5. Quadratic and Other Nonlinear Functions
2012	34.6	36.9	40.4	36.5	36.3
2013	37.9	35.5	42.4	35.2	45.5
2014	48.1	48.1	41.7	38.9	45.5

PERCENTAGE SATISFACTORY (Levels 2 or 3)

Grade	Year	White	African Amer	Hispanic	Econ Disadv	Special Educ	LEP	At Risk	Migrant	Male	Female	All	District	Number Tested (All Students)
5	2012			36.4	33.3	33.3	14.3	27.3		*	33.3	33.3	48.8	12
	2013		*	66.7	68.8	64.7	70.0	62.5		54.5	83.3	64.7	58.1	17
	2014		*	56.3	52.9	55.6	50.0	55.6		50.0	62.5	55.6	55.5	18

NUMBER TESTED IN GRADE 5													
2012			11	12	12	7	11		3	9	12	531	
2013		2	15	16	17	10	16		11	6	17	540	
2014		2	16	17	18	10	18		10	8	18	501	

PERCENTAGE SATISFACTORY (Levels 2 or 3)

Grade	Year	White	African Amer	Hispanic	Econ Disadv	Special Educ	LEP	At Risk	Migrant	Male	Female	All	District	Number Tested (All Students)
8	2012		*	37.5	37.5	33.3	33.3	33.3		*	*	33.3	58.2	9
	2013	*	*	76.5	73.7	73.7	71.4	73.7		69.2	83.3	73.7	59.3	19
	2014		*	45.5	41.7	46.2	57.1	46.2		45.5	*	46.2	63.5	13

NUMBER TESTED IN GRADE 8													
2012		1	8	8	9	6	9		5	4	9	457	
2013	1	1	17	19	19	14	19		13	6	19	526	
2014		2	11	12	13	7	13		11	2	13	474	

NUMBER UNSATISFACTORY (Level 1)

Grade	Year	White	African Amer	Hispanic	Econ Disadv	Special Educ	LEP	At Risk	Migrant	Male	Female	All	District	Number Tested (All Students)
5	2012			7	8	8	6	8		*	6	8	272	12
	2013		*	5	5	6	3	6		5	1	6	226	17
	2014		*	7	8	8	5	8		5	3	8	223	18

NUMBER TESTED IN GRADE 5													
2012			11	12	12	7	11		3	9	12	531	
2013		2	15	16	17	10	16		11	6	17	540	
2014		2	16	17	18	10	18		10	8	18	501	

NUMBER UNSATISFACTORY (Level 1)

Grade	Year	White	African Amer	Hispanic	Econ Disadv	Special Educ	LEP	At Risk	Migrant	Male	Female	All	District	Number Tested (All Students)
8	2012		*	5	5	6	4	6		*	*	6	191	9
	2013	*	*	4	5	5	4	5		4	1	5	214	19
	2014		*	6	7	7	3	7		6	*	7	173	13

NUMBER TESTED IN GRADE 8													
2012		1	8	8	9	6	9		5	4	9	457	
2013	1	1	17	19	19	14	19		13	6	19	526	
2014		2	11	12	13	7	13		11	2	13	474	

PERCENTAGE ADVANCED (Level 3)

Grade	Year	White	African Amer	Hispanic	Econ Disadv	Special Educ	LEP	At Risk	Migrant	Male	Female	All	District	Number Tested (All Students)
5	2012			0.0	0.0	0.0	0.0	0.0		*	0.0	0.0	6.2	12
	2013		*	13.3	12.5	11.8	20.0	12.5		18.2	0.0	11.8	6.1	17
	2014		*	18.8	17.6	16.7	10.0	16.7		20.0	12.5	16.7	7.6	18

NUMBER TESTED IN GRADE 5													
2012			11	12	12	7	11		3	9	12	531	
2013		2	15	16	17	10	16		11	6	17	540	
2014		2	16	17	18	10	18		10	8	18	501	

PERCENTAGE ADVANCED (Level 3)

Grade	Year	White	African Amer	Hispanic	Econ Disadv	Special Educ	LEP	At Risk	Migrant	Male	Female	All	District	Number Tested (All Students)
8	2012		*	0.0	0.0	0.0	0.0	0.0		*	*	0.0	0.4	9
	2013	*	*	0.0	0.0	0.0	0.0	0.0		0.0	0.0	0.0	2.5	19
	2014		*	9.1	8.3	7.7	14.3	7.7		9.1	*	7.7	3.8	13

NUMBER TESTED IN GRADE 8													
2012		1	8	8	9	6	9		5	4	9	457	
2013	1	1	17	19	19	14	19		13	6	19	526	
2014		2	11	12	13	7	13		11	2	13	474	

AVERAGE PERCENTAGE OF ITEMS CORRECT BY REPORTING CATEGORY

Grade	Year	REPORTING CATEGORY			
		1. Matter and Energy	2. Force, Motion, and Energy	3. Earth and Space	4. Organisms and Environments
5	2012	63.9	53.1	54.2	55.3
	2013	60.8	79.4	67.1	67.4
	2014	63.9	68.1	63.3	65.7
8	2012	49.5	34.4	45.5	37.4
	2013	63.2	64.7	69.9	64.6
	2014	60.1	54.6	57.3	49.0

PERCENTAGE SATISFACTORY (Levels 2 and 3)

Test	Year	White	African Amer	Hispanic	Econ Disadv	Special Educ	LEP	At Risk	Migrant	Male	Female	All	District
BIOLOGY	2012	*		33.3	30.0	30.8	37.5	30.8		11.1	*	30.8	31.7
	2013		*	60.0	62.5	54.5	50.0	54.5		50.0	*	54.5	42.6
	2014	*	*	50.0	53.6	53.6	43.8	53.8		63.2	33.3	53.6	46.6
Tests Taken	2012	1		12	10	13	8	13		9	4	13	262
	2013		1	10	8	11	8	11		8	3	11	331
	2014	1	1	26	28	28	16	26		19	9	28	350

NUMBER UNSATISFACTORY (Level 1)

Test	Year	White	African Amer	Hispanic	Econ Disadv	Special Educ	LEP	At Risk	Migrant	Male	Female	All	District
BIOLOGY	2012	*		8	7	9	5	9		8	*	9	179
	2013		*	4	3	5	4	5		4	*	5	190
	2014	*	*	13	13	13	9	12		7	6	13	187
Tests Taken	2012	1		12	10	13	8	13		9	4	13	262
	2013		1	10	8	11	8	11		8	3	11	331
	2014	1	1	26	28	28	16	26		19	9	28	350

PERCENTAGE ADVANCED (Level 3)

Test	Year	White	African Amer	Hispanic	Econ Disadv	Special Educ	LEP	At Risk	Migrant	Male	Female	All	District
BIOLOGY	2012			0.0	0.0	0.0	0.0	0.0		0.0	*	0.0	0.0
	2013		*	0.0	0.0	0.0	0.0	0.0		0.0	*	0.0	0.0
	2014	*	*	0.0	0.0	0.0	0.0	0.0		0.0	0.0	0.0	1.1
Tests Taken	2012			12	10	13	8	13		9	4	13	262
	2013		1	10	8	11	8	11		8	3	11	331
	2014	1	1	26	28	28	16	26		19	9	28	350

AVERAGE PERCENTAGE OF ITEMS CORRECT BY REPORTING CATEGORY

BIOLOGY	1. Cell Structure and Function	2. Mechanisms of Genetics	3. Biological Evolution and Classification	4. Biological Processes and Systems	5. Interdependence within Environmental Systems
2012	41.0	44.2	45.2	39.3	38.5
2013	42.4	44.3	54.5	53.5	47.5
2014	56.0	57.1	56.7	54.8	49.2

PERCENTAGE SATISFACTORY (Levels 2 or 3)

Grade	Year	White	African Amer	Hispanic	Econ Disadv	Special Educ	LEP	At Risk	Migrant	Male	Female	All	District	Number Tested (All Students)
8	2012		*	50.0	62.5	55.6	50.0	55.6		*	*	55.6	52.3	9
	2013	*	*	70.6	68.4	68.4	64.3	68.4		61.5	83.3	68.4	59.5	19
	2014		*	45.5	33.3	38.5	57.1	38.5		36.4	*	38.5	59.3	13

NUMBER TESTED IN GRADE 8													
2012		1	8	8	9	6	9		5	4	9	451	
2013	1	1	17	19	19	14	19		13	6	19	516	
2014		2	11	12	13	7	13		11	2	13	479	

NUMBER UNSATISFACTORY (Level 1)

Grade	Year	White	African Amer	Hispanic	Econ Disadv	Special Educ	LEP	At Risk	Migrant	Male	Female	All	District	Number Tested (All Students)
8	2012		*	4	3	4	3	4		*	*	4	215	9
	2013	*	*	5	6	6	5	6		5	1	6	209	19
	2014		*	6	8	8	3	8		7	*	8	195	13

NUMBER TESTED IN GRADE8													
2012		1	8	8	9	6	9		5	4	9	451	
2013	1	1	17	19	19	14	19		13	6	19	516	
2014		2	11	12	13	7	13		11	2	13	479	

PERCENTAGE ADVANCED (Level 3)

Grade	Year	White	African Amer	Hispanic	Econ Disadv	Special Educ	LEP	At Risk	Migrant	Male	Female	All	District	Number Tested (All Students)
8	2012		*	0.0	0.0	0.0	0.0	0.0		*	*	0.0	2.9	9
	2013	*	*	5.9	5.3	5.3	0.0	5.3		7.7	0.0	5.3	1.9	19
	2014		*	0.0	0.0	0.0	0.0	0.0		0.0	*	0.0	3.5	13

NUMBER TESTED IN GRADE 8													
2012		1	8	8	9	6	9		5	4	9	451	
2013	1	1	17	19	19	14	19		13	6	19	516	
2014		2	11	12	13	7	13		11	2	13	479	

AVERAGE PERCENTAGE OF ITEMS CORRECT BY REPORTING CATEGORY

Grade	Year	REPORTING CATEGORY			
		1. History	2. Geography and Culture	3. Government and Citizenship	4. Economics, Science, Technology, and Society
8	2012	44.4	51.1	53.3	46.3
	2013	53.9	61.1	52.6	62.3
	2014	52.4	52.3	41.5	50.0

PERCENTAGE SATISFACTORY (Levels 2 and 3)

Test	Year	White	African Amer	Hispanic	Econ Disadv	Special Educ	LEP	At Risk	Migrant	Male	Female	All	District
U.S. HISTORY	2012												
	2013												
	2014			0.0	0.0	0.0	0.0	0.0		0.0	*	0.0	0.0
Tests Taken	2012												
	2013												
	2014			10	9	11	6	10		7	4	11	226

NUMBER UNSATISFACTORY (Level 1)

Test	Year	White	African Amer	Hispanic	Econ Disadv	Special Educ	LEP	At Risk	Migrant	Male	Female	All	District
U.S. HISTORY	2012												
	2013												
	2014			10	9	11	6	10		7	*	11	226
Tests Taken	2012												
	2013												
	2014			10	9	11	6	10		7	4	11	226

PERCENTAGE ADVANCED (Level 3)

Test	Year	White	African Amer	Hispanic	Econ Disadv	Special Educ	LEP	At Risk	Migrant	Male	Female	All	District
U.S. HISTORY	2012												
	2013												
	2014			0.0	0.0	0.0	0.0	0.0		0.0	*	0.0	0.0
Tests Taken	2012												
	2013												
	2014			10	9	11	6	10		7	4	11	226

AVERAGE PERCENTAGE OF ITEMS CORRECT BY REPORTING CATEGORY

U.S. HISTORY	1. History	2. Geography and Culture	3. Government and Citizenship	4. Economics, Science, Technology, and Society
2012				
2013				
2014	48.9	46.5	44.3	47.6

PERCENTAGE AT OR ABOVE THE 40th PERCENTILE on the ITBS

Grade	Year	READING TOTAL (**READING PROFILE TOTAL)				
		At Risk	Not At Risk	All	District	Number Tested (All Students)
K**	2012	58.5	61.1	60.6	62.2	203
	2013	53.7	53.8	53.8	60.8	236
	2014	34.4	52.4	49.8	60.7	217
1	2012	40.0	56.2	51.2	55.4	244
	2013	36.7	51.7	47.4	55.0	209
	2014	47.3	39.7	41.5	47.2	234
2	2012	27.6	68.1	40.2	49.8	234
	2013	28.9	76.5	46.7	50.2	227
	2014	25.5	66.7	40.2	44.4	219
K-2	2012	35.5	60.3	50.2	55.8	478
	2013	37.7	56.4	50.6	56.7	672
	2014	32.3	50.6	45.2	53.1	670
# Tested (GR K-2)	2012	279	403	681	21,034	
	2013	284	624	908	28,878	
	2014	260	627	887	28,063	

Grade	Year	MATHEMATICS TOTAL (**MATHEMATICS)				
		At Risk	Not At Risk	All	District	Number Tested (All Students)
K**	2012	51.0	61.2	54.8	55.1	460
	2013	50.2	52.5	51.1	55.1	495
	2014	40.3	57.4	47.4	55.0	458
1	2012	46.3	57.4	49.7	50.7	580
	2013	42.3	51.6	45.4	52.0	485
	2014	41.8	37.2	40.0	46.0	490
2	2012	55.4	72.7	58.0	57.9	533
	2013	49.5	71.1	53.0	56.2	545
	2014	45.8	75.9	50.9	52.0	468
K-2	2012	51.1	61.7	54.0	54.5	1,573
	2013	47.5	55.9	50.0	54.4	1,525
	2014	43.0	52.2	46.0	51.0	1,416
# Tested (GR K-2)	2012	1,151	423	1,573	40,477	
	2013	1,078	447	1,525	40,966	
	2014	956	460	1,416	40,233	

PERCENTAGE AT OR ABOVE THE 40th PERCENTILE

Grade	Year	White	African Amer	Hispanic	Econ Disadv	Special Educ	LEP	At Risk	Migrant	Male	Female	All	District	Number Tested (All Students)
K**	2012	83.3	74.1	58.0	59.7	12.5	56.5	58.5		60.2	61.1	60.6	62.2	203
	2013	*	50.0	53.3	51.1	*	50.0	53.7		50.0	57.9	53.8	60.8	236
	2014	*	44.1	50.6	48.5	28.6	33.3	34.4		48.2	51.5	49.8	60.7	217
1	2012	44.4	42.1	52.6	50.5	25.0	42.9	40.0		46.7	55.7	51.2	55.4	244
	2013	*	44.0	48.0	46.5	0.0	38.5	36.7		50.0	44.1	47.4	55.0	209
	2014	*	20.0	44.4	39.8	10.0	31.0	47.3		40.0	43.3	41.5	47.2	234
2	2012	*	23.8	42.3	36.8	26.7	25.7	27.6		37.4	43.2	40.2	49.8	234
	2013	66.7	40.0	46.6	44.4	26.7	40.0	28.9		48.7	44.6	46.7	50.2	227
	2014	57.1	9.1	42.8	38.0	0.0	28.0	25.5		41.0	39.2	40.2	44.4	219
1-2	2012	38.5	32.5	47.5	43.8	25.8	33.3	31.5		42.0	49.8	45.8	52.7	478
	2013	68.4	45.1	49.4	47.4	19.2	42.1	35.0		49.6	49.2	49.4	55.4	672
	2014	50.0	26.7	45.8	42.0	10.0	30.6	32.0		42.9	44.7	43.7	50.6	670
# Tested (GR K-2)	2012	13	40	423	427	31	63	238		245	233	478	14,095	
	2013	19	82	567	622	26	76	243		353	319	672	21,640	
	2014	16	86	561	616	30	72	228		366	304	670	21,214	

**Kindergarten subscore is Reading Profile Total; no Reading Total subscore available.

NUMBER AT OR ABOVE THE 80th PERCENTILE

Grade	Year	White	African Amer	Hispanic	Econ Disadv	Special Educ	LEP	At Risk	Migrant	Male	Female	All	District	Number Tested (All Students)
K**	2012	2	11	31	34	0	1	7		24	20	44	2,027	203
	2013	*	8	30	36	*	3	7		22	19	41	2,108	236
	2014	*	7	27	35	0	1	2		20	16	36	1,938	217
1	2012	1	2	40	36	0	4	9		20	23	43	1,963	244
	2013	*	3	32	34	0	2	7		18	18	36	2,017	209
	2014	*	1	30	28	0	2	12		19	14	33	1,561	234
2	2012	*	0	19	13	0	2	7		7	12	19	1,017	234
	2013	0	1	14	12	1	3	4		12	3	15	1,045	227
	2014	1	0	15	15	0	1	4		10	6	16	950	219
1-2	2012	1	2	59	49	0	6	16		27	35	62	2,981	478
	2013	3	12	76	82	1	8	18		52	40	92	5,171	672
	2014	2	8	72	78	0	4	18		49	36	85	4,449	670
# Tested (GR K-2)	2012	13	40	423	427	31	63	238		245	233	478	14,095	
	2013	19	82	567	622	26	76	243		353	319	672	21,640	
	2014	16	86	561	616	30	72	228		366	304	670	21,214	

**Kindergarten subscore is Reading Profile Total; no Reading Total subscore available.

PERCENTAGE AT OR ABOVE THE 40th PERCENTILE

Grade	Year	White	African Amer	Hispanic	Econ Disadv	Special Educ	LEP	At Risk	Migrant	Male	Female	All	District	Number Tested (All Students)
K**	2012	62.5	71.4	53.6	54.1	5.3	50.4	51.0		56.2	53.2	54.8	55.1	460
	2013	83.3	42.4	51.3	50.3	7.1	48.0	50.2		50.2	52.2	51.1	55.1	495
	2014	*	48.6	47.2	47.7	10.0	41.5	40.3		45.5	49.5	47.4	55.0	458
1	2012	30.0	57.9	49.9	49.0	27.3	45.4	46.3		48.8	50.5	49.7	50.7	580
	2013	*	42.3	45.1	45.0	14.3	41.9	42.3		47.5	42.7	45.4	52.0	485
	2014	33.3	22.6	41.2	39.3	28.6	39.6	41.8		43.6	35.8	40.0	46.0	490
2	2012	*	21.7	59.6	57.1	36.0	60.6	55.4		58.0	58.0	58.0	57.9	533
	2013	77.8	22.6	54.6	52.1	20.0	50.9	49.5		52.0	54.0	53.0	56.2	545
	2014	71.4	45.5	50.3	50.1	14.8	48.7	45.8		54.5	46.5	50.9	52.0	468
K-2	2012	45.5	51.4	54.3	53.2	24.2	52.0	51.1		54.2	53.8	54.0	54.5	1,573
	2013	75.0	35.6	50.5	49.2	15.4	47.1	47.5		49.9	50.0	50.0	54.4	1,525
	2014	50.0	38.6	46.2	45.5	19.0	43.3	43.0		47.8	43.8	46.0	51.0	1,416
# Tested (GR K-2)	2012	22	70	1,476	1,487	66	956	1,151		805	768	1,573	40,477	
	2013	20	90	1,408	1,464	65	888	1,078		807	718	1,525	40,966	
	2014	18	88	1,302	1,335	58	796	956		761	655	1,416	40,233	

**Kindergarten test is Mathematics; no Mathematics Total score available.

NUMBER AT OR ABOVE THE 80th PERCENTILE

Grade	Year	White	African Amer	Hispanic	Econ Disadv	Special Educ	LEP	At Risk	Migrant	Male	Female	All	District	Number Tested (All Students)
K**	2012	3	5	72	76	0	48	53		44	36	80	2,472	460
	2013	4	5	63	69	1	39	42		39	34	73	2,594	495
	2014	*	7	39	46	0	14	15		22	24	46	2,598	458
1	2012	0	4	88	89	2	61	66		43	49	92	2,473	580
	2013	*	1	50	51	1	31	35		31	21	52	2,609	485
	2014	2	3	41	44	1	23	28		30	17	47	2,166	490
2	2012	*	1	90	86	2	59	74		52	40	92	2,843	533
	2013	1	1	65	60	2	39	48		36	31	67	2,626	545
	2014	1	0	71	66	0	41	50		46	27	73	2,408	468
K-2	2012	3	10	250	251	4	168	193		139	125	264	7,788	1,573
	2013	6	7	178	180	4	109	125		106	86	192	7,829	1,525
	2014	3	10	151	156	1	78	93		98	68	166	7,172	1,416
# Tested (GR K-2)	2012	22	70	1,476	1,487	66	956	1,151		805	768	1,573	40,477	
	2013	20	90	1,408	1,464	65	888	1,078		807	718	1,525	40,966	
	2014	18	88	1,302	1,335	58	796	956		761	655	1,416	40,233	

**Kindergarten test is Mathematics; no Mathematics Total score available.

PERCENTAGE AT OR ABOVE THE 40th PERCENTILE

Grade	Year	White	African Amer	Hispanic	Econ Disadv	Special Educ	LEP	At Risk	Migrant	Male	Female	All	District	Number Tested (All Students)
1	2012	30.0	57.9	63.3	62.6	45.0	60.8	60.2		60.1	64.4	62.3	62.5	578
	2013	*	38.5	59.4	58.2	40.0	59.4	57.8		61.0	54.8	58.2	63.6	483
	2014	66.7	25.8	53.9	51.8	40.0	57.8	57.9		55.1	49.1	52.4	58.6	489
2	2012	*	43.5	68.7	67.0	44.0	72.2	66.5		64.9	69.6	67.2	63.6	533
	2013	44.4	35.5	56.1	53.9	23.3	55.2	52.6		50.4	58.8	54.6	60.6	544
	2014	71.4	59.1	54.6	55.5	26.9	56.9	52.8		56.1	54.7	55.5	59.2	467
1-2	2012	21.4	50.0	65.9	64.7	44.4	66.3	63.6		62.5	66.8	64.6	63.0	1,111
	2013	57.1	36.8	57.6	55.9	30.0	57.2	54.8		55.6	57.0	56.3	62.1	1,027
	2014	69.2	39.6	54.2	53.6	32.6	57.4	55.0		55.6	51.8	53.9	58.9	956
# Tested (GR 1-2)	2012	14	42	1,052	1,054	45	682	859		562	549	1,111	26,880	
	2013	14	57	951	987	50	614	779		534	493	1,027	27,003	
	2014	13	53	885	901	46	542	687		518	438	956	26,955	

NUMBER AT OR ABOVE THE 80th PERCENTILE

Grade	Year	White	African Amer	Hispanic	Econ Disadv	Special Educ	LEP	At Risk	Migrant	Male	Female	All	District	Number Tested (All Students)
1	2012	1	5	166	164	6	115	126		85	87	172	4,060	578
	2013	*	4	108	115	3	69	80		68	48	116	4,150	483
	2014	2	4	111	111	1	69	80		74	44	118	3,708	489
2	2012	*	3	170	165	5	131	152		90	84	174	3,820	533
	2013	0	4	89	83	1	46	66		45	48	93	3,436	544
	2014	1	5	84	82	4	62	69		49	41	90	3,288	467
1-2	2012	1	8	336	329	11	246	278		175	171	346	7,880	1,111
	2013	3	8	197	198	4	115	146		113	96	209	7,586	1,027
	2014	3	9	195	193	5	131	149		123	85	208	6,996	956
# Tested (GR 1-2)	2012	14	42	1,052	1,054	45	682	859		562	549	1,111	26,880	
	2013	14	57	951	987	50	614	779		534	493	1,027	27,003	
	2014	13	53	885	901	46	542	687		518	438	956	26,955	

PERCENTAGE AT OR ABOVE THE 40th PERCENTILE

Grade	Year	White	African Amer	Hispanic	Econ Disadv	Special Educ	LEP	At Risk	Migrant	Male	Female	All	District	Number Tested (All Students)
K	2012	*		90.4	90.4	60.0	90.2	90.2		89.2	91.8	90.5	89.9	252
	2013	*		94.1	94.1	90.0	94.4	94.1		93.9	94.5	94.2	89.7	257
	2014	*		91.1	91.2	*	91.1	91.1		90.4	92.0	91.1	88.6	237
1	2012	*		89.2	89.3	*	89.1	89.1		86.1	92.2	89.3	89.2	318
	2013			83.7	83.7	36.4	83.7	83.7		80.9	87.3	83.8	87.6	259
	2014	*		84.2	84.6	81.8	84.2	84.2		82.0	86.7	84.2	84.6	241
2	2012			93.1	93.8	66.7	93.4	93.4		90.1	96.3	93.1	93.3	277
	2013	*		92.5	92.5	55.6	92.5	92.5		89.7	95.4	92.6	93.6	297
	2014			88.3	89.0	38.5	88.3	88.4		87.2	89.7	88.4	91.8	249
K-2	2012	*		90.9	91.1	62.5	90.8	90.8		88.4	93.4	90.9	90.8	847
	2013	*		90.2	90.2	60.0	90.3	90.2		88.2	92.6	90.3	90.3	813
	2014	*		87.8	88.3	61.5	87.8	87.8		86.5	89.4	87.9	88.2	727
# Tested (GR K-2)	2012	2		843	841	24	829	829		422	425	847	18,911	
	2013	2		809	804	30	803	806		434	379	813	18,629	
	2014	2		724	698	26	723	724		386	341	727	18,008	

NUMBER AT OR ABOVE THE 80th PERCENTILE

Grade	Year	White	African Amer	Hispanic	Econ Disadv	Special Educ	LEP	At Risk	Migrant	Male	Female	All	District	Number Tested (All Students)
K	2012	*		146	146	1	143	143		70	77	147	3,679	252
	2013	*		147	146	4	145	147		83	65	148	3,798	257
	2014	*		121	116	*	121	121		62	59	121	3,313	237
1	2012	*		103	104	*	102	102		43	61	104	2,437	318
	2013			81	80	1	81	81		46	35	81	2,394	259
	2014	*		67	64	4	67	67		32	35	67	2,123	241
2	2012			157	156	1	154	154		77	80	157	2,934	277
	2013	*		136	134	1	133	133		49	87	136	2,899	297
	2014			96	92	2	97	97		53	44	97	2,596	249
K-2	2012	*		406	406	2	399	399		190	218	408	9,050	847
	2013	*		364	360	6	359	361		178	187	365	9,091	813
	2014	*		284	272	6	285	285		147	138	285	8,032	727
# Tested (GR K-2)	2012	2		843	841	24	829	829		422	425	847	18,911	
	2013	2		809	804	30	803	806		434	379	813	18,629	
	2014	2		724	698	26	723	724		386	341	727	18,008	

PERCENTAGE DEMONSTRATING IMPROVEMENT

Grade	Level 1 in 2013		Level 2 in 2013		Level 3 in 2013		Levels 1-3 in 2013	
	Number Tested Both Years	Percentage Improved in 2014	Number Tested Both Years	Percentage Improved in 2014	Number Tested Both Years	Percentage Improved in 2014	Number Tested Both Years	Percentage Improved in 2014
5	0		1	*	0		1	*
6	5	*	13	76.9	0		18	77.8
7	5	*	9	77.8	0		14	78.6
8	7	71.4	9	66.7	0		16	68.8
9	16	56.3	14	50.0	0		30	53.3
10	5	*	2	*	0		7	42.9
11	3	*	8	25.0	0		11	27.3
12	4	*	9	44.4	0		13	46.2
ALL	45	60.0	65	58.5	0		110	59.1

PERFORMANCE IN 2014

Grade 2013-14 (N Rated)	Domain:	Listening		Speaking		Writing		Reading		Composite	
	2014 Level	N	%	N	%	N	%	N	%	N	%
KN (257)	Beginning	180	70.0	200	77.8	242	94.2	238	92.6	236	91.8
	Intermediate	54	21.0	37	14.4	4	1.6	7	2.7	9	3.5
	Advanced	17	6.6	16	6.2	6	2.3	7	2.7	7	2.7
	Advanced High	6	2.3	4	1.6	5	1.9	5	1.9	5	1.9
1 (293)	Beginning	117	39.9	155	52.9	221	75.4	203	69.3	192	65.5
	Intermediate	102	34.8	91	31.1	58	19.8	63	21.5	74	25.3
	Advanced	54	18.4	27	9.2	5	1.7	13	4.4	17	5.8
	Advanced High	20	6.8	20	6.8	9	3.1	14	4.8	10	3.4
2 (281)	Beginning	34	12.2	51	18.3	107	38.8	72	25.7	43	15.6
	Intermediate	90	32.4	104	37.4	98	35.5	121	43.2	132	47.8
	Advanced	106	38.1	96	34.5	56	20.3	57	20.4	79	28.6
	Advanced High	48	17.3	27	9.7	15	5.4	30	10.7	22	8.0
3 (333)	Beginning	11	3.3	23	6.9	45	13.6	48	14.5	26	7.9
	Intermediate	90	27.1	104	31.3	123	37.0	114	34.3	108	32.6
	Advanced	134	40.4	123	37.0	117	35.2	102	30.7	126	38.1
	Advanced High	97	29.2	82	24.7	47	14.2	68	20.5	71	21.5
4 (311)	Beginning	10	3.2	13	4.2	25	8.1	57	18.4	19	6.1
	Intermediate	56	18.0	80	25.7	100	32.3	109	35.2	104	33.5
	Advanced	107	34.4	113	36.3	108	34.8	98	31.6	115	37.1
	Advanced High	138	44.4	105	33.8	77	24.8	46	14.8	72	23.2

**PROGRESSION FROM
2013 TO 2014**

Number Rated Both Years N (%) Progressed	2014 Level	2013 Level			
		Beg	Int	Adv	Adv High
-	Beginning	-			
	Intermediate	-	-		
	Advanced	-	-	-	
	Advanced High	-	-	-	
283 81 (28.6%)	Beginning	184			
	Intermediate	56	16		
	Advanced	14	1	2	
	Advanced High	0	3	7	
261 165 (63.2%)	Beginning	34			
	Intermediate	87	41		
	Advanced	29	27	21	
	Advanced High	4	10	8	
311 118 (37.9%)	Beginning	24			
	Intermediate	13	86		
	Advanced	2	35	83	
	Advanced High	0	4	64	
292 116 (39.7%)	Beginning	15			
	Intermediate	23	72		
	Advanced	0	24	89	
	Advanced High	0	2	67	

PERFORMANCE IN 2014

Grade 2013-14 (N Rated)	Domain:	Listening		Speaking		Writing		Reading		Composite	
	2014 Level	N	%	N	%	N	%	N	%	N	%
5 (279)	Beginning	0	0.0	3	1.1	10	3.6	15	5.4	6	2.2
	Intermediate	15	5.4	30	10.8	63	22.6	42	15.1	35	12.6
	Advanced	98	35.1	109	39.1	94	33.7	113	40.6	114	41.0
	Advanced High	166	59.5	137	49.1	112	40.1	108	38.8	123	44.2
6 (246)	Beginning	1	0.4	3	1.2	3	1.2	20	8.1	5	2.0
	Intermediate	40	16.3	45	18.3	75	30.5	82	33.3	54	22.0
	Advanced	138	56.1	132	53.7	114	46.3	112	45.5	129	52.4
	Advanced High	67	27.2	66	26.8	54	22.0	32	13.0	58	23.6
7 (201)	Beginning	2	1.0	2	1.0	9	4.5	14	7.0	3	1.5
	Intermediate	26	12.9	25	12.4	43	21.5	89	44.3	41	20.5
	Advanced	124	61.7	132	65.7	101	50.5	74	36.8	115	57.5
	Advanced High	49	24.4	42	20.9	47	23.5	24	11.9	41	20.5
8 (120)	Beginning	0	0.0	2	1.7	3	2.5	11	9.2	3	2.5
	Intermediate	18	15.0	20	16.7	31	25.8	49	40.8	27	22.5
	Advanced	62	51.7	65	54.2	53	44.2	52	43.3	66	55.0
	Advanced High	40	33.3	33	27.5	33	27.5	8	6.7	24	20.0
9 (169)	Beginning	18	10.7	18	10.7	18	10.7	18	10.7	10	5.9
	Intermediate	12	7.1	14	8.3	27	16.0	40	23.7	25	14.8
	Advanced	53	31.4	55	32.5	64	37.9	81	47.9	73	43.2
	Advanced High	86	50.9	82	48.5	60	35.5	30	17.8	61	36.1

**PROGRESSION FROM
2013 TO 2014**


Number Rated Both Years N (%) Progressed	2014 Level	2013 Level			
		Beg	Int	Adv	Adv High
269 169 (62.8%)	Beginning	5			
	Intermediate	10	22		
	Advanced	2	38	73	
	Advanced High	0	5	114	
235 76 (32.3%)	Beginning	3			
	Intermediate	6	48		
	Advanced	1	12	108	
	Advanced High	0	0	57	
22 7 (31.8%)	Beginning	0			
	Intermediate	0	2		
	Advanced	0	1	13	
	Advanced High	0	0	6	
9 4 (44.4%)	Beginning	0			
	Intermediate	0	1		
	Advanced	0	1	4	
	Advanced High	0	0	3	
29 15 (51.7%)	Beginning	0			
	Intermediate	1	1		
	Advanced	1	1	13	
	Advanced High	0	0	12	

PERFORMANCE IN 2014

Grade 2013-14 (N Rated)	Domain:	Listening		Speaking		Writing		Reading		Composite	
	2014 Level	N	%	N	%	N	%	N	%	N	%
10 (92)	Beginning	1	1.1	1	1.1	1	1.1	7	7.6	1	1.1
	Intermediate	14	15.2	12	13.0	13	14.1	24	26.1	9	9.8
	Advanced	21	22.8	23	25.0	23	25.0	45	48.9	39	42.4
	Advanced High	56	60.9	56	60.9	55	59.8	16	17.4	43	46.7
11 (90)	Beginning	2	2.2	2	2.2	1	1.1	7	7.8	1	1.1
	Intermediate	6	6.7	5	5.6	7	7.9	21	23.3	10	11.2
	Advanced	27	30.3	27	30.3	30	33.7	42	46.7	37	41.6
	Advanced High	54	60.7	55	61.8	51	57.3	20	22.2	41	46.1
12 (32)	Beginning	0	0.0	0	0.0	0	0.0	3	9.4	0	0.0
	Intermediate	1	3.1	2	6.3	3	9.4	10	31.3	6	18.8
	Advanced	5	15.6	5	15.6	16	50.0	16	50.0	14	43.8
	Advanced High	26	81.3	25	78.1	13	40.6	3	9.4	12	37.5
ALL (2,704)	Beginning	376	13.9	473	17.5	685	25.4	713	26.4	545	20.2
	Intermediate	524	19.4	569	21.1	645	23.9	771	28.6	634	23.5
	Advanced	946	35.1	923	34.2	787	29.2	812	30.1	931	34.6
	Advanced High	853	31.6	734	27.2	578	21.4	404	15.0	583	21.6

**PROGRESSION FROM
2013 TO 2014**

Number Rated Both Years N (%) Progressed	2014 Level	2013 Level			
		Beg	Int	Adv	Adv High
85 46 (54.1%)	Beginning	0			
	Intermediate	5	4		
	Advanced	0	2	35	
	Advanced High	0	1	38	
85 43 (50.6%)	Beginning	1			
	Intermediate	1	8		
	Advanced	0	4	33	
	Advanced High	0	1	37	
29 12 (41.4%)	Beginning	0			
	Intermediate	1	5		
	Advanced	1	1	12	
	Advanced High	0	0	9	
1,911 852 (44.6%)	Beginning	267			
	Intermediate	203	306		
	Advanced	50	147	486	
	Advanced High	4	26	422	

 Indicates students who progressed at least one level from 2013 to 2014.