

# DATA PACKET

for 2014-15 planning

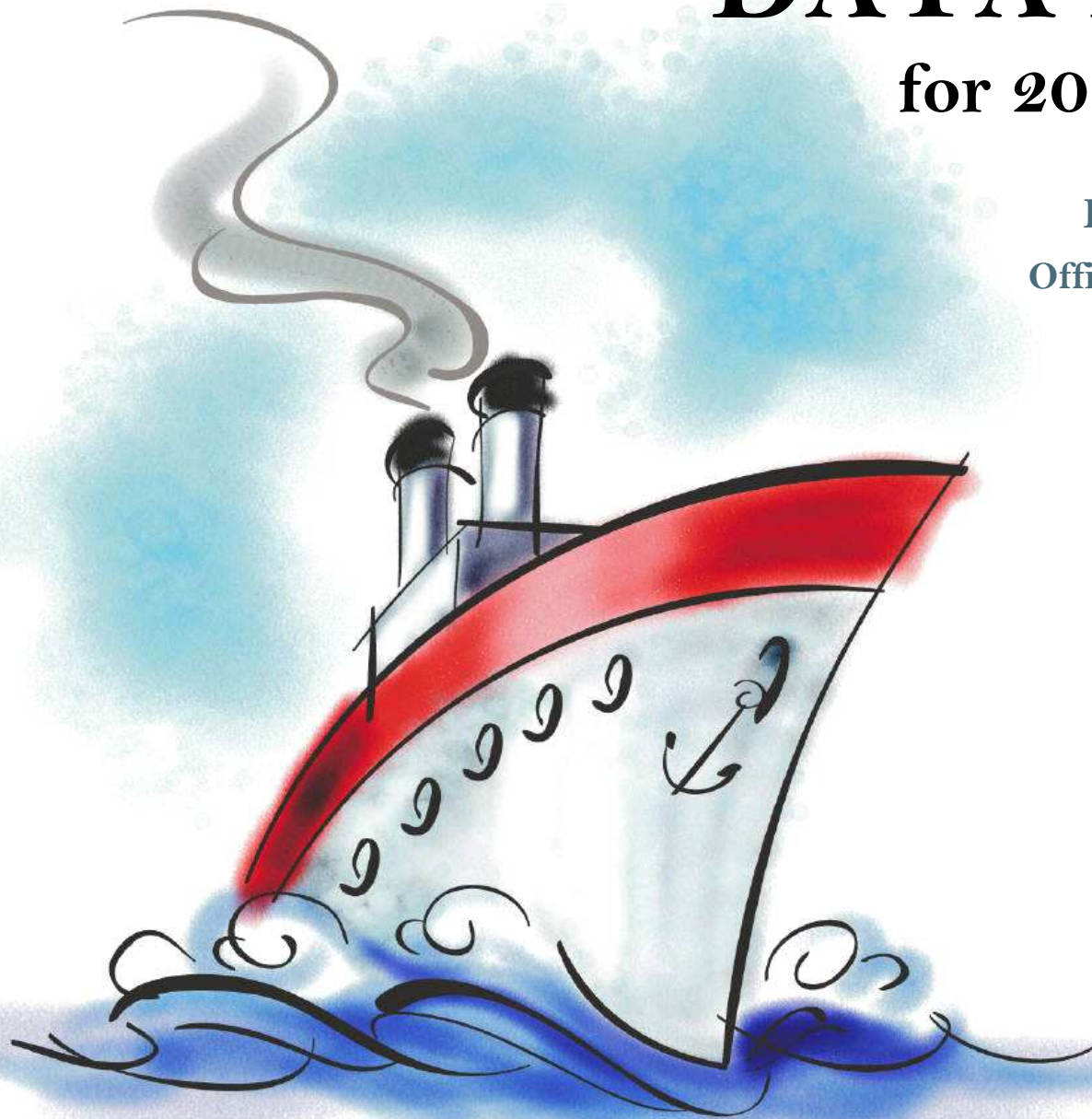
Evaluation & Assessment  
Office of Institutional Research

<http://mydata.dallasisd.org>

[OIR@dallasisd.org](mailto:OIR@dallasisd.org)

September 8, 2014

**W.H. ADAMSON  
FEEDER GROUP**



Dallas Independent School District

2. Contents ..... Table of Contents

**STUDENTS AND STAFF**

- 5. Summary ..... Summary of Student and Teacher Statistics
- 9. Enroll (2) ..... Enrollment Statistics by Select Student Group
- 15. Teachers ..... Teacher Statistics

**STAAR (English)**

- 16. Reading (3-8) .... STAAR 3-8 Reading in English
- 28. Writing (3-8) ..... STAAR 3-8 Writing in English
- 43. Math (EOC) ..... STAAR EOC Mathematics
- 54. Science (EOC) ... STAAR EOC Science
- 62. SS (EOC) ..... STAAR EOC Social Studies

**STAAR (Spanish)**

- 66. Reading (3-8) .... STAAR 3-8 Reading in Spanish
- 74. Math (3-8) ..... STAAR 3-8 Mathematics in Spanish

**STAAR L**

- 82. Math (3-8) ..... STAAR L 3-8 Mathematics
- 94. Science (3-8) ..... STAAR L 3-8 Science
- 105. SS (3-8) ..... STAAR L 3-8 Social Studies

**STAAR M**

- 113. Reading (3-8) .... STAAR M 3-8 Reading
- 125. Writing (3-8) ..... STAAR M 3-8 Writing
- 140. Math (EOC) ..... STAAR M EOC Mathematics
- 151. Science (EOC) ... STAAR M EOC Science

**ITBS/LOGRAMOS**

- 159. Compliance ..... SCE Compliance for At-Risk Students
- 162. Math ..... ITBS Mathematics Subtests

**ENGLISH PROFICIENCY**

- 168. WMLS ..... Woodcock-Muñoz Language Survey

3. Notes ..... Notes and Data Descriptions

- 6. Enroll (1) ..... Enrollment Statistics by Ethnicity
- 12. Attendance ..... Student Attendance Statistics

- 24. Reading (EOC) .. STAAR EOC Reading
- 35. Math (3-8) ..... STAAR 3-8 Mathematics in English
- 47. Science (3-8) ..... STAAR 3-8 Science in English
- 58. SS (3-8) ..... STAAR 3-8 Social Studies in English

- 70. Writing (3-8) ..... STAAR 3-8 Writing in Spanish
- 78. Science (3-8) ..... STAAR 3-8 Science in Spanish

- 90. Math (EOC) ..... STAAR L EOC Mathematics
- 101. Science (EOC) ... STAAR L EOC Science
- 109. SS (EOC) ..... STAAR L EOC Social Studies

- 121. Reading (EOC) .. STAAR M EOC Reading
- 132. Math (3-8) ..... STAAR M 3-8 Mathematics
- 144. Science (3-8) ..... STAAR M 3-8 Science
- 155. SS (3-8) ..... STAAR M 3-8 Social Studies

- 160. Reading ..... ITBS Reading Subtests
- 166. Reading ..... Logramos Reading Subtests

- 169. TELPAS ..... Texas English Language Proficiency Assessment System

## **2013-14 SCHOOL SUMMARY**

- Student percentages are computed as the percentage of total student enrollment.
- Additional statistics are available in ENROLLMENT and TEACHER reports.
- Race/ethnic categories are based on the newest federal standards for ethnicity and race reporting, though some categories have been combined because of small group sizes. Students reporting their ethnicity as “Hispanic” are not counted in any race category.
- “Economically disadvantaged” students are those who qualify for free or reduced-price lunch through the federal government's program.
- Teacher demographics and assignments are from the district's Public Education Information Management System (PEIMS) submission to the TEA.

## **ENROLLMENT**

- Statistics are based on the school's enrollment at the end of the fifth six-weeks grading period.
- “Economically disadvantaged” students are those receiving free or reduced-price lunches.
- “New” students were new to the district in 2013-14. They are counted as new if not enrolled in a district campus before the last day of the 2012-13 school year.
- The “retention rate” is the percentage of students in the same grade at the end of the fifth six-weeks grading period for both 2012-13 and 2013-14.

## **ATTENDANCE**

- Statistics are based on student attendance through the end of the sixth six-weeks grading period (the end of the school year).
- “Average daily membership” is the total number of school days students were ENROLLED divided by the number of school days in the year.
- The “average daily attendance” number (N) is the total number of school days students were IN ATTENDANCE divided by the number of school days in the year. The “average daily attendance” percentage (%) is the average attendance rate. For each student, the number of days attended is divided by the number of days enrolled. This rate is then averaged across students.
- The number (N) of “yearly transactions” is the total number of transfer and withdrawal transactions in the school year. The percentage (%) is the number of transactions divided by “average daily membership,” which gives (on average) the percentage of the membership associated with a transaction.
- “Continuously enrolled” students are enrolled and in attendance for a minimum number of instructional days in at least one course at the school between the beginning of the school year and the first day of the main STAAR testing period. The minimum number varies depending on the school year's calendar, but is typically around 130 days.
- The “stability rate” is the number of continuously enrolled students divided by “average daily membership.”

## **TEACHERS**

- Teacher demographics and assignments are from the district's Public Education Information Management System (PEIMS) submission to the TEA.
- Teacher absences counted towards the average DO NOT include vacation days (coded as VAC in personnel database).
- Retention rate for a school year is computed with numerator “# of teachers assigned to the school both that year and the year prior” and denominator “# of teachers assigned to the school for the prior year.” That is, the retention rate is the percentage of the prior year's teachers who continued at the school.

### **STAAR, STAAR L, and STAAR M**

- Cells marked with an asterisk (\*) indicate five or fewer students were tested. Blank cells indicate no students were tested.
- Student group assignments are from the district's Public Education Information Management System (PEIMS) submission to the TEA.
- STAAR statistics are based on results from standard STAAR only. STAAR L and STAAR M statistics are computed separately, following TEA reporting practice.
- “Percentage Satisfactory” is the percentage of students achieving Level 2 (Satisfactory) or Level 3 (Advanced).
- Statistics by reporting category are averages for all students (across student groups and genders).
- An “average percentage correct” is computed as follows: for each student, divide the number of items correctly answered by the total number of items in the test section, then average the resulting percentages across all students. For short answers on EOC English tests, an “average rating” is presented; STAAR EOC short answers are rated on a scale of 0 to 3. For written compositions on writing tests, “average score points” is presented. Additional details provided in report footnotes.
- Reading and mathematics statistics for SSI grades 5 and 8 are based on scores cumulative through the second administration. EOC statistics are based on first administration scores from the fall and spring administrations.
- Beginning in 2014, EOC Reading and EOC Writing tests were replaced with EOC English tests.

### **SCE COMPLIANCE and ITBS / ITED / LOGRAMOS**

- Cells marked with an asterisk (\*) indicate five or fewer students were tested. Blank cells indicate no students were tested.
- Student group assignments are based on demographic data in the Dallas ISD student database.
- Kindergarten ITBS reading statistics are based on the Reading Profile Total summary score. All other grades' ITBS reading statistics, and Logramos reading statistics for all grades, are based on the Reading Total summary score. (Reading Total values not available with use of the ITBS form administered in kindergarten.) “Number tested” statistics include kindergarten.
- Kindergarten ITBS mathematics statistics are based on the Mathematics subtest score. All other grades' statistics are based on the Mathematics Total summary score. (Mathematics Total values not available with use of the ITBS form administered in kindergarten.) “Number tested” statistics include kindergarten.
- Mathematics Total summary scores are combinations of the Mathematics Concepts, Problems, and Computation subtest results. For schools that did not administer Mathematics Concepts or Mathematics Problems subtests, Mathematics Computation statistics are provided separately.

### **TELPAS**

- Students are counted as having tested if any one of the four domains is rated. Because a TELPAS composite rating is not assigned to a student unless all four domains are rated, the number of TELPAS composite ratings may be smaller than the number tested.
- If a student's composite rating did not increase at least one level from 2013 to 2014, the TEA did not report the 2013 composite rating.
- If a student is rated as advanced high in 2014, the TEA does not differentiate between the advanced and advanced high levels from 2013.

**STUDENT ENROLLMENT**

Grade	Enrollment
PK	280
KN	316
1	361
2	345
3	332
4	322
5	293
6	270
7	300
8	277
9	382
10	384
11	299
12	333
ALL	4,494

**STUDENT AND TEACHER RACE/ETHNICITY**

Ethnicity/Race	Students		Teachers	
	Number	Percent	Number	Percent
Black/African American	134	3.0	82	29.8
American Indian/Alaska Native	11	0.2	*	*
Asian/Hawaiian/Pacific Islander	7	0.2	*	*
Hispanic	4,307	95.8	92	33.5
White	27	0.6	97	35.3
Multiple	8	0.2	1	0.4
Other* (teachers only)	—	—	3	1.1
Not reported (students only)	0	0.0	—	—

\*For teachers, "Other" category includes American Indian/Alaska Native and Asian/Hawaiian/Pacific Islander.

**SELECT STUDENT GROUP ENROLLMENT**

Group	Number	Percent
At-Risk	3,759	83.6
Economically disadvantaged	4,250	94.6
Limited English proficient (LEP)	2,359	52.5
Special education	355	7.9
Talented and Gifted (TAG)	475	10.6

Grade	Year	Enrollment	African American		American Indian		Asian		Hispanic		White		Multiple category	
			N	%	N	%	N	%	N	%	N	%	N	%
PK	2012	273	4	1.5	0	0.0	0	0.0	266	97.4	3	1.1	0	0.0
	2013	274	4	1.5	1	0.4	0	0.0	266	97.1	1	0.4	2	0.7
	2014	280	7	2.5	0	0.0	0	0.0	272	97.1	0	0.0	1	0.4
KN	2012	336	9	2.7	0	0.0	0	0.0	323	96.1	4	1.2	0	0.0
	2013	351	6	1.7	0	0.0	0	0.0	338	96.3	6	1.7	1	0.3
	2014	316	10	3.2	0	0.0	1	0.3	301	95.3	2	0.6	2	0.6
1	2012	367	6	1.6	0	0.0	1	0.3	355	96.7	5	1.4	0	0.0
	2013	371	12	3.2	0	0.0	0	0.0	354	95.4	5	1.3	0	0.0
	2014	361	9	2.5	0	0.0	0	0.0	347	96.1	5	1.4	0	0.0
2	2012	365	12	3.3	0	0.0	0	0.0	351	96.2	2	0.5	0	0.0
	2013	343	7	2.0	1	0.3	1	0.3	331	96.5	3	0.9	0	0.0
	2014	345	9	2.6	0	0.0	1	0.3	330	95.7	5	1.4	0	0.0
3	2012	319	9	2.8	2	0.6	0	0.0	305	95.6	3	0.9	0	0.0
	2013	347	11	3.2	0	0.0	0	0.0	333	96.0	3	0.9	0	0.0
	2014	332	8	2.4	1	0.3	2	0.6	321	96.7	0	0.0	0	0.0
4	2012	301	9	3.0	0	0.0	0	0.0	292	97.0	0	0.0	0	0.0
	2013	299	9	3.0	0	0.0	0	0.0	287	96.0	3	1.0	0	0.0
	2014	322	9	2.8	1	0.3	0	0.0	308	95.7	4	1.2	0	0.0
5	2012	286	6	2.1	0	0.0	1	0.3	278	97.2	0	0.0	1	0.3
	2013	284	7	2.5	0	0.0	1	0.4	276	97.2	0	0.0	0	0.0
	2014	293	8	2.7	0	0.0	0	0.0	285	97.3	0	0.0	0	0.0
PK-5	2012	2,247	55	2.4	2	0.1	2	0.1	2,170	96.6	17	0.8	1	0.0
	2013	2,269	56	2.5	2	0.1	2	0.1	2,185	96.3	21	0.9	3	0.1
	2014	2,249	60	2.7	2	0.1	4	0.2	2,164	96.2	16	0.7	3	0.1

Grade	Year	Enrollment	African American		American Indian		Asian		Hispanic		White		Multiple category	
			N	%	N	%	N	%	N	%	N	%	N	%
6	2012	313	14	4.5	1	0.3	0	0.0	294	93.9	4	1.3	0	0.0
	2013	320	21	6.6	0	0.0	0	0.0	297	92.8	1	0.3	1	0.3
	2014	270	9	3.3	0	0.0	1	0.4	259	95.9	1	0.4	0	0.0
7	2012	308	11	3.6	0	0.0	1	0.3	294	95.5	2	0.6	0	0.0
	2013	296	14	4.7	1	0.3	0	0.0	279	94.3	2	0.7	0	0.0
	2014	300	15	5.0	0	0.0	0	0.0	285	95.0	0	0.0	0	0.0
8	2012	379	16	4.2	1	0.3	1	0.3	354	93.4	6	1.6	1	0.3
	2013	288	13	4.5	0	0.0	2	0.7	270	93.8	3	1.0	0	0.0
	2014	277	10	3.6	1	0.4	0	0.0	266	96.0	0	0.0	0	0.0
6-8	2012	1,000	41	4.1	2	0.2	2	0.2	942	94.2	12	1.2	1	0.1
	2013	904	48	5.3	1	0.1	2	0.2	846	93.6	6	0.7	1	0.1
	2014	847	34	4.0	1	0.1	1	0.1	810	95.6	1	0.1	0	0.0

Grade	Year	Enrollment	African American		American Indian		Asian		Hispanic		White		Multiple category	
			N	%	N	%	N	%	N	%	N	%	N	%
9	2012	373	15	4.0	2	0.5	0	0.0	352	94.4	2	0.5	2	0.5
	2013	425	17	4.0	3	0.7	0	0.0	402	94.6	2	0.5	1	0.2
	2014	382	7	1.8	1	0.3	2	0.5	369	96.6	2	0.5	1	0.3
10	2012	352	14	4.0	2	0.6	0	0.0	332	94.3	3	0.9	1	0.3
	2013	332	15	4.5	2	0.6	0	0.0	311	93.7	2	0.6	2	0.6
	2014	384	11	2.9	2	0.5	0	0.0	367	95.6	3	0.8	1	0.3
11	2012	337	10	3.0	3	0.9	0	0.0	320	95.0	3	0.9	1	0.3
	2013	369	17	4.6	3	0.8	0	0.0	343	93.0	5	1.4	1	0.3
	2014	299	14	4.7	3	1.0	0	0.0	279	93.3	1	0.3	2	0.7
12	2012	274	11	4.0	2	0.7	1	0.4	258	94.2	2	0.7	0	0.0
	2013	325	14	4.3	3	0.9	0	0.0	306	94.2	1	0.3	1	0.3
	2014	333	8	2.4	2	0.6	0	0.0	318	95.5	4	1.2	1	0.3
9-12	2012	1,336	50	3.7	9	0.7	1	0.1	1,262	94.5	10	0.7	4	0.3
	2013	1,451	63	4.3	11	0.8	0	0.0	1,362	93.9	10	0.7	5	0.3
	2014	1,398	40	2.9	8	0.6	2	0.1	1,333	95.4	10	0.7	5	0.4
ALL	2012	4,583	146	3.2	13	0.3	5	0.1	4,374	95.4	39	0.9	6	0.1
	2013	4,624	167	3.6	14	0.3	4	0.1	4,393	95.0	37	0.8	9	0.2
	2014	4,494	134	3.0	11	0.2	7	0.2	4,307	95.8	27	0.6	8	0.2



Grade	Year	Enrollment	Economically Disadvantaged		LEP		Special Education		At Risk		TAG		New (to District)		Gender		Retention Rate (%)
			N	%	N	%	N	%	N	%	N	%	N	%	% Male	% Female	
PK	2012	273	265	97.1	210	76.9	6	2.2	211	77.3	0	0.0	266	97.4	47.6	52.4	0.4
	2013	274	270	98.5	198	72.3	14	5.1	201	73.4	0	0.0	262	95.6	49.3	50.7	1.5
	2014	280	265	94.6	190	67.9	17	6.1	190	67.9	0	0.0	271	96.8	48.2	51.8	0.0
KN	2012	336	324	96.4	244	72.6	9	2.7	251	74.7	9	2.7	108	32.1	53.0	47.0	0.3
	2013	351	345	98.3	262	74.6	11	3.1	264	75.2	13	3.7	94	26.8	50.7	49.3	0.3
	2014	316	301	95.3	201	63.6	19	6.0	207	65.5	8	2.5	81	25.6	50.6	49.4	0.3
1	2012	367	360	98.1	264	71.9	20	5.4	291	79.3	19	5.2	32	8.7	51.8	48.2	4.1
	2013	371	356	96.0	263	70.9	18	4.9	281	75.7	29	7.8	32	8.6	54.4	45.6	5.9
	2014	361	342	94.7	259	71.7	20	5.5	266	73.7	24	6.6	30	8.3	51.5	48.5	4.7
2	2012	365	357	97.8	266	72.9	32	8.8	331	90.7	28	7.7	30	8.2	53.2	46.8	3.3
	2013	343	333	97.1	241	70.3	21	6.1	297	86.6	39	11.4	17	5.0	50.4	49.6	3.2
	2014	345	329	95.4	244	70.7	26	7.5	293	84.9	42	12.2	15	4.3	55.7	44.3	3.8
3	2012	319	312	97.8	259	81.2	22	6.9	301	94.4	40	12.5	23	7.2	50.5	49.5	2.5
	2013	347	340	98.0	258	74.4	36	10.4	314	90.5	40	11.5	14	4.0	53.0	47.0	1.7
	2014	332	317	95.5	233	70.2	24	7.2	296	89.2	48	14.5	25	7.5	52.4	47.6	1.8
4	2012	301	293	97.3	210	69.8	26	8.6	268	89.0	46	15.3	25	8.3	49.8	50.2	1.3
	2013	299	296	99.0	244	81.6	20	6.7	282	94.3	47	15.7	21	7.0	50.2	49.8	2.7
	2014	322	309	96.0	243	75.5	31	9.6	302	93.8	61	18.9	12	3.7	53.1	46.9	0.9
5	2012	286	283	99.0	197	68.9	17	5.9	245	85.7	50	17.5	18	6.3	50.0	50.0	3.5
	2013	284	275	96.8	181	63.7	27	9.5	258	90.8	52	18.3	12	4.2	53.2	46.8	2.5
	2014	293	288	98.3	228	77.8	23	7.8	280	95.6	57	19.5	15	5.1	50.9	49.1	3.8
PK-5	2012	2,247	2,194	97.6	1,650	73.4	132	5.9	1,898	84.5	192	8.5	502	22.3	51.0	49.0	2.3
	2013	2,269	2,215	97.6	1,647	72.6	147	6.5	1,897	83.6	220	9.7	452	19.9	51.7	48.3	2.6
	2014	2,249	2,151	95.6	1,598	71.1	160	7.1	1,834	81.5	240	10.7	449	20.0	51.9	48.1	2.3

Grade	Year	Enrollment	Economically Disadvantaged		LEP		Special Education		At Risk		TAG		New (to District)		Gender		Retention Rate (%)
			N	%	N	%	N	%	N	%	N	%	N	%	% Male	% Female	
6	2012	313	305	97.4	171	54.6	39	12.5	261	83.4	42	13.4	17	5.4	57.5	42.5	2.2
	2013	320	302	94.4	188	58.8	28	8.8	273	85.3	34	10.6	17	5.3	52.8	47.2	5.6
	2014	270	260	96.3	149	55.2	33	12.2	259	95.9	38	14.1	11	4.1	54.1	45.9	8.1
7	2012	308	286	92.9	128	41.6	35	11.4	239	77.6	40	13.0	20	6.5	52.9	47.1	3.2
	2013	296	276	93.2	146	49.3	33	11.1	253	85.5	38	12.8	15	5.1	54.1	45.9	3.0
	2014	300	288	96.0	156	52.0	26	8.7	266	88.7	31	10.3	29	9.7	54.7	45.3	4.3
8	2012	379	357	94.2	121	31.9	37	9.8	293	77.3	37	9.8	24	6.3	55.4	44.6	5.8
	2013	288	263	91.3	97	33.7	33	11.5	222	77.1	43	14.9	16	5.6	51.7	48.3	3.1
	2014	277	268	96.8	115	41.5	29	10.5	254	91.7	33	11.9	16	5.8	52.3	47.7	2.9
6-8	2012	1,000	948	94.8	420	42.0	111	11.1	793	79.3	119	11.9	61	6.1	55.3	44.7	3.9
	2013	904	841	93.0	431	47.7	94	10.4	748	82.7	115	12.7	48	5.3	52.9	47.1	4.0
	2014	847	816	96.3	420	49.6	88	10.4	779	92.0	102	12.0	56	6.6	53.7	46.3	5.1

Grade	Year	Enrollment	Economically Disadvantaged		LEP		Special Education		At Risk		TAG		New (to District)		Gender		Retention Rate (%)
			N	%	N	%	N	%	N	%	N	%	N	%	% Male	% Female	
9	2012	373	339	90.9	108	29.0	27	7.2	268	71.8	30	8.0	60	16.1	53.6	46.4	2.4
	2013	425	390	91.8	133	31.3	27	6.4	323	76.0	35	8.2	76	17.9	55.3	44.7	2.8
	2014	382	350	91.6	115	30.1	29	7.6	309	80.9	40	10.5	74	19.4	52.1	47.9	4.5
10	2012	352	307	87.2	83	23.6	32	9.1	262	74.4	45	12.8	44	12.5	52.3	47.7	0.6
	2013	332	304	91.6	77	23.2	29	8.7	249	75.0	24	7.2	17	5.1	53.0	47.0	1.5
	2014	384	364	94.8	107	27.9	27	7.0	333	86.7	34	8.9	10	2.6	55.7	44.3	1.3
11	2012	337	278	82.5	69	20.5	24	7.1	279	82.8	26	7.7	26	7.7	51.6	48.4	0.6
	2013	369	335	90.8	53	14.4	33	8.9	283	76.7	42	11.4	17	4.6	52.0	48.0	3.3
	2014	299	280	93.6	67	22.4	19	6.4	245	81.9	21	7.0	13	4.3	51.2	48.8	0.0
12	2012	274	223	81.4	57	20.8	25	9.1	217	79.2	24	8.8	9	3.3	51.1	48.9	4.7
	2013	325	289	88.9	60	18.5	27	8.3	277	85.2	24	7.4	3	0.9	52.3	47.7	4.0
	2014	333	289	86.8	52	15.6	32	9.6	259	77.8	38	11.4	4	1.2	49.2	50.8	3.0
9-12	2012	1,336	1,147	85.9	317	23.7	108	8.1	1,026	76.8	125	9.4	139	10.4	52.2	47.8	1.9
	2013	1,451	1,318	90.8	323	22.3	116	8.0	1,132	78.0	125	8.6	113	7.8	53.3	46.7	2.9
	2014	1,398	1,283	91.8	341	24.4	107	7.7	1,146	82.0	133	9.5	101	7.2	52.2	47.8	2.3
ALL	2012	4,583	4,289	93.6	2,387	52.1	351	7.7	3,717	81.1	436	9.5	702	15.3	52.3	47.7	2.5
	2013	4,624	4,374	94.6	2,401	51.9	357	7.7	3,777	81.7	460	9.9	613	13.3	52.4	47.6	3.0
	2014	4,494	4,250	94.6	2,359	52.5	355	7.9	3,759	83.6	475	10.6	606	13.5	52.3	47.7	2.8

Grade	Year	Average Daily Membership		Average Daily Attendance				Yearly Transactions			Continuously Enrolled		Stability Rate	
		N	District	N	%	District N	District %	N	%	District %	N	District	%	District
KN	2012	335	13,633	323	96.4	13,086	96.0	50	14.9	19.9	294	11,731	87.7	86.0
	2013	348	14,067	335	96.4	13,411	95.3	55	15.8	20.0	316	12,178	90.8	86.6
	2014	320	13,618	309	96.4	13,058	95.9	40	12.5	19.8	284	11,271	88.7	82.8
1	2012	362	14,026	352	97.1	13,533	96.5	43	11.9	18.3	339	12,292	93.5	87.6
	2013	368	14,140	356	96.7	13,578	96.0	66	17.9	18.7	333	12,528	90.5	88.6
	2014	364	14,262	353	96.8	13,732	96.3	47	12.9	19.2	324	12,149	88.9	85.2
2	2012	364	13,338	355	97.6	12,932	97.0	45	12.4	16.8	343	11,883	94.2	89.1
	2013	346	13,555	336	96.9	13,077	96.5	37	10.7	17.1	320	12,206	92.4	90.0
	2014	350	13,652	340	97.1	13,209	96.8	46	13.2	17.0	314	11,868	89.8	86.9
3	2012	316	12,874	309	98.0	12,508	97.2	37	11.7	15.5	298	11,592	94.4	90.0
	2013	346	12,879	337	97.3	12,466	96.8	49	14.1	15.9	323	11,710	93.3	90.9
	2014	331	13,159	322	97.2	12,763	97.0	33	10.0	17.3	300	11,491	90.6	87.3
4	2012	295	12,493	288	97.7	12,139	97.2	40	13.6	16.6	276	11,218	93.7	89.8
	2013	301	12,406	294	97.8	12,029	97.0	44	14.6	16.5	282	11,339	93.8	91.4
	2014	323	12,543	316	97.7	12,180	97.1	34	10.5	16.3	298	11,075	92.2	88.3
5	2012	287	12,562	281	97.8	12,220	97.3	10	3.5	5.3	275	11,364	95.8	90.5
	2013	282	12,053	275	97.4	11,696	97.0	11	3.9	6.2	268	11,075	94.9	91.9
	2014	297	12,130	290	97.6	11,795	97.2	12	4.0	5.4	271	10,790	91.3	89.0
KN-5	2012	1,959	78,926	1,908	97.4	76,419	96.8	225	11.5	15.5	1,825	70,080	93.2	88.8
	2013	1,992	79,100	1,933	97.0	76,255	96.4	262	13.2	16.0	1,842	71,036	92.5	89.8
	2014	1,985	79,365	1,928	97.1	76,736	96.7	212	10.7	16.0	1,791	68,644	90.2	86.5

Grade	Year	Average Daily Membership		Average Daily Attendance				Yearly Transactions			Continuously Enrolled		Stability Rate	
		N	District	N	%	District N	District %	N	%	District %	N	District	%	District
6	2012	315	10,683	304	96.7	10,315	96.6	40	12.7	17.6	282	9,420	89.6	88.2
	2013	324	11,463	312	96.5	11,062	96.5	50	15.4	21.1	299	10,320	92.4	90.0
	2014	279	10,808	267	95.6	10,413	96.3	38	13.6	20.0	246	9,554	88.1	88.4
7	2012	307	10,204	294	95.8	9,727	95.3	42	13.7	23.8	275	8,576	89.5	84.0
	2013	299	10,542	286	95.7	10,116	96.0	52	17.4	24.5	275	9,357	92.1	88.8
	2014	299	11,195	288	96.4	10,729	95.8	52	17.4	22.1	266	9,852	89.1	88.0
8	2012	382	10,369	364	95.3	9,838	94.9	27	7.1	15.5	339	8,711	88.7	84.0
	2013	295	9,955	282	95.5	9,486	95.3	12	4.1	17.6	265	8,664	89.8	87.0
	2014	280	10,449	270	96.6	9,970	95.4	20	7.2	13.1	254	9,097	90.8	87.1
6-8	2012	1,004	31,256	963	95.9	29,880	95.6	109	10.9	18.9	896	26,707	89.3	85.4
	2013	918	31,960	880	95.9	30,665	96.0	114	12.4	21.1	839	28,341	91.4	88.7
	2014	857	32,451	825	96.2	31,112	95.9	110	12.8	18.5	766	28,503	89.3	87.8

Grade	Year	Average Daily Membership		Average Daily Attendance				Yearly Transactions			Continuously Enrolled		Stability Rate	
		N	District	N	%	District N	District %	N	%	District %	N	District	%	District
9	2012	380	10,922	359	94.6	10,196	93.3	46	12.1	27.8	329	8,726	86.6	79.9
	2013	419	11,153	398	95.1	10,499	94.1	76	18.1	28.3	378	9,388	90.2	84.2
	2014	388	10,850	368	94.8	10,242	94.4	70	18.0	28.4	335	9,091	86.3	83.8
10	2012	351	9,007	329	93.7	8,431	93.6	43	12.2	20.6	297	7,332	84.5	81.4
	2013	341	9,331	320	93.8	8,812	94.4	33	9.7	20.5	292	8,042	85.5	86.2
	2014	387	9,898	367	94.7	9,367	94.6	32	8.3	20.3	353	8,628	91.1	87.2
11	2012	348	8,913	322	92.5	8,306	93.2	38	10.9	15.9	291	7,319	83.7	82.1
	2013	370	8,457	346	93.5	7,949	94.0	41	11.1	18.9	316	7,295	85.3	86.3
	2014	305	8,467	286	93.9	8,005	94.5	28	9.2	18.1	268	7,476	88.0	88.3
12	2012	275	8,178	249	90.6	7,571	92.6	24	8.7	12.6	221	6,742	80.5	82.4
	2013	321	8,199	295	91.9	7,661	93.4	18	5.6	14.9	266	7,269	82.8	88.7
	2014	347	7,886	322	92.7	7,407	93.9	9	2.6	15.2	299	7,027	86.2	89.1
9-12	2012	1,354	37,021	1,259	93.0	34,504	93.2	151	11.2	19.8	1,138	30,119	84.1	81.4
	2013	1,452	37,140	1,360	93.7	34,922	94.0	168	11.6	21.2	1,252	31,994	86.2	86.1
	2014	1,427	37,101	1,343	94.1	35,021	94.4	139	9.7	21.1	1,255	32,222	87.9	86.8

Teachers: 275

**DISTRIBUTIONS**

Ethnicity/Race	Number	Percentage
African American	82	29.8
Hispanic	92	33.5
White	97	35.3
Multiple	1	0.4
Other	3	1.1

Gender	Number	Percentage
Female	181	65.8
Male	94	34.2

**ATTENDANCE / RETENTION**

	Average Absences	Retention Rate
2011-12	7.3	—
2012-13	7.1	73.2
2013-14	6.6	60.4

**YEARS EXPERIENCE**

Years	Number	Percentage
Beginning (0)	57	20.7
1	24	8.7
2	9	3.3
3	18	6.5
4	13	4.7
5	11	4.0
1-3	51	18.5
More than 3	167	60.7
1 - 5	75	27.3
6 - 10	58	21.1
11 - 20	51	18.5
More than 20	34	12.4

**PERCENTAGE SATISFACTORY (Levels 2 or 3)**

Grade	Year	White	African Amer	Hispanic	Econ Disadv	Special Educ	LEP	At Risk	Migrant	Male	Female	All	District	Number Tested (All Students)
3	2012	*	50.0	57.6	56.9	*	41.7	48.1		50.0	67.5	59.0	63.6	78
	2013	*	81.8	58.9	59.4	62.5	50.0	49.2		62.5	60.9	61.8	67.8	102
	2014		50.0	55.8	56.4	*	35.3	40.0		52.6	60.7	56.6	61.7	113
4	2012		44.4	74.6	72.9	55.6	75.7	70.3		70.0	76.5	72.8	64.3	195
	2013	*	37.5	64.5	63.0	*	64.3	64.5		60.2	66.7	63.1	62.3	149
	2014	*	37.5	51.9	51.8	11.1	54.5	44.2		50.7	51.9	51.4	59.4	148
5	2012		83.3	68.0	69.6	*	60.7	58.3		68.0	70.8	69.3	68.0	189
	2013		*	83.4	82.9	75.0	83.7	81.8		81.8	85.9	83.5	81.5	206
	2014		*	85.2	85.4	*	86.9	84.6		76.5	96.0	85.6	78.5	215
3-5	2012	*	56.5	69.2	68.9	43.8	65.7	61.8		66.1	72.4	69.0	65.5	462
	2013	*	70.8	72.1	71.2	60.0	73.1	69.6		70.8	73.6	72.0	71.1	457
	2014	*	57.9	68.4	68.5	38.9	74.0	64.6		63.4	73.0	68.1	66.7	476

NUMBER TESTED IN GRADES 3-5													
2012	3	23	429	444	16	242	319		248	214	462	22,173	
2013	4	24	427	441	20	249	326		260	197	457	21,619	
2014	4	19	449	444	18	262	373		243	233	476	21,304	



**PERCENTAGE SATISFACTORY (Levels 2 or 3)**

Grade	Year	White	African Amer	Hispanic	Econ Disadv	Special Educ	LEP	At Risk	Migrant	Male	Female	All	District	Number Tested (All Students)
6	2012	*	44.4	52.6	52.5	0.0	39.8	41.0		50.6	56.5	53.1	63.5	288
	2013		38.5	46.0	45.7	10.0	35.1	36.2		48.7	42.9	45.9	57.7	303
	2014		*	56.0	56.5	33.3	47.5	48.2		56.2	57.3	56.7	63.1	247
7	2012	*	33.3	63.9	63.5	28.6	44.1	51.8		56.8	70.3	63.3	67.5	286
	2013	*	22.2	56.8	56.6	10.0	40.3	42.9		53.3	58.6	55.8	67.3	278
	2014	*	42.9	50.7	49.6	0.0	33.6	39.5		51.7	49.6	50.7	60.5	282
8	2012	100.0	100.0	70.6	71.6	35.0	40.9	58.8		69.3	74.4	71.6	71.3	363
	2013	*	90.9	83.5	83.9	50.0	71.3	75.6		83.9	84.4	84.2	82.7	278
	2014		*	77.0	77.0	53.8	53.5	70.1		73.9	79.8	76.8	81.5	263
6-8	2012	100.0	56.0	63.0	63.1	25.0	41.4	50.9		59.7	67.8	63.4	67.4	937
	2013	*	51.5	61.5	61.2	26.5	45.0	49.7		61.2	61.8	61.5	68.6	859
	2014	*	58.8	61.1	60.9	34.4	44.0	52.4		60.2	62.3	61.2	68.2	792

NUMBER TESTED IN GRADES 6-8													
2012	12	25	895	884	44	394	617			511	426	937	29,211
2013	5	33	816	794	34	418	590			443	416	859	29,692
2014	1	17	772	768	32	402	618			415	377	792	30,015

**NUMBER UNSATISFACTORY (Level 1)**

Grade	Year	White	African Amer	Hispanic	Econ Disadv	Special Educ	LEP	At Risk	Migrant	Male	Female	All	District	Number Tested (All Students)
3	2012	*	4	28	31	*	14	28		19	13	32	2,466	78
	2013	*	2	37	39	3	11	33		21	18	39	2,181	102
	2014		3	46	44	*	11	39		27	22	49	2,649	113
4	2012		5	47	51	4	27	41		33	20	53	2,529	195
	2013	*	5	49	54	*	35	38		33	22	55	2,581	149
	2014	*	5	65	66	8	35	63		35	37	72	2,858	148
5	2012		1	57	56	*	42	53		32	26	58	2,665	189
	2013		*	33	34	2	21	28		22	12	34	1,484	206
	2014		*	31	30	*	22	30		27	4	31	1,582	215
3-5	2012	*	10	132	138	9	83	122		84	59	143	7,660	462
	2013	*	7	119	127	8	67	99		76	52	128	6,246	457
	2014	*	8	142	140	11	68	132		89	63	152	7,089	476

NUMBER TESTED IN GRADES 3-5													
2012	3	23	429	444	16	242	319		248	214	462	22,173	
2013	4	24	427	441	20	249	326		260	197	457	21,619	
2014	4	19	449	444	18	262	373		243	233	476	21,304	

**NUMBER UNSATISFACTORY (Level 1)**

Grade	Year	White	African Amer	Hispanic	Econ Disadv	Special Educ	LEP	At Risk	Migrant	Male	Female	All	District	Number Tested (All Students)
6	2012	*	5	130	133	10	97	118		81	54	135	3,673	288
	2013		8	156	157	9	120	143		80	84	164	4,523	303
	2014		*	106	104	8	73	103		57	50	107	3,679	247
7	2012	*	6	99	97	10	66	92		64	41	105	3,070	286
	2013	*	7	115	111	9	83	113		70	53	123	3,215	278
	2014	*	4	135	137	7	99	130		73	66	139	4,075	282
8	2012	0	0	102	96	13	68	93		61	42	103	2,786	363
	2013	*	1	43	40	7	27	41		22	22	44	1,586	278
	2014		*	59	59	6	53	61		35	26	61	1,797	263
6-8	2012	0	11	331	326	33	231	303		206	137	343	9,529	937
	2013	*	16	314	308	25	230	297		172	159	331	9,324	859
	2014	*	7	300	300	21	225	294		165	142	307	9,551	792

NUMBER TESTED IN GRADES 6-8													
2012	12	25	895	884	44	394	617		511	426	937	29,211	
2013	5	33	816	794	34	418	590		443	416	859	29,692	
2014	1	17	772	768	32	402	618		415	377	792	30,015	

PERCENTAGE ADVANCED (Level 3)

Grade	Year	White	African Amer	Hispanic	Econ Disadv	Special Educ	LEP	At Risk	Migrant	Male	Female	All	District	Number Tested (All Students)
3	2012	*	0.0	4.5	4.2	*	0.0	0.0		2.6	10.0	6.4	12.6	78
	2013	*	0.0	7.8	5.2	0.0	4.5	1.5		10.7	2.2	6.9	13.6	102
	2014		0.0	6.7	5.9	*	5.9	1.5		7.0	5.4	6.2	9.6	113
4	2012		0.0	11.4	9.6	22.2	10.8	9.4		9.1	12.9	10.8	11.2	195
	2013	*	12.5	10.1	11.6	*	11.2	10.3		8.4	15.2	11.4	13.5	149
	2014	*	0.0	7.4	7.3	0.0	10.4	7.1		8.5	6.5	7.4	12.0	148
5	2012		16.7	11.8	10.9	*	9.3	7.9		9.0	14.6	11.6	11.1	189
	2013		*	11.1	11.1	12.5	10.1	8.4		13.2	8.2	11.2	13.3	206
	2014		*	12.9	13.6	*	13.1	12.3		10.4	16.0	13.0	11.5	215
3-5	2012	*	4.3	10.5	9.2	18.8	9.1	7.2		8.1	13.1	10.4	11.6	462
	2013	*	8.3	10.1	10.0	5.0	10.0	7.7		11.2	9.1	10.3	13.5	457
	2014	*	5.3	9.8	9.9	0.0	11.8	8.8		9.1	10.3	9.7	11.1	476

NUMBER TESTED IN GRADE 3-5													
2012	3	23	429	444	16	242	319		248	214	462	22,173	
2013	4	24	427	441	20	249	326		260	197	457	21,619	
2014	4	19	449	444	18	262	373		243	233	476	21,304	

PERCENTAGE ADVANCED (Level 3)

Grade	Year	White	African Amer	Hispanic	Econ Disadv	Special Educ	LEP	At Risk	Migrant	Male	Female	All	District	Number Tested (All Students)
6	2012	*	0.0	2.9	2.9	0.0	1.9	2.0		1.8	4.0	2.8	8.3	288
	2013		7.7	5.9	5.2	0.0	2.7	3.6		5.8	6.1	5.9	11.3	303
	2014		*	1.7	1.7	0.0	1.4	1.0		1.5	1.7	1.6	7.1	247
7	2012	*	0.0	6.9	6.4	0.0	0.8	2.6		5.4	8.0	6.6	10.3	286
	2013	*	0.0	4.9	4.7	0.0	1.4	1.5		5.3	4.7	5.0	8.7	278
	2014	*	14.3	4.0	4.0	0.0	0.7	1.4		2.6	6.9	4.6	10.0	282
8	2012	0.0	0.0	4.3	3.8	0.0	0.9	2.2		4.0	4.3	4.1	9.9	363
	2013	*	0.0	13.0	12.0	0.0	6.4	4.8		12.4	12.8	12.6	15.5	278
	2014		*	6.6	6.2	0.0	0.0	1.5		8.2	5.4	6.8	13.1	263
6-8	2012	0.0	0.0	4.7	4.3	0.0	1.3	2.3		3.7	5.4	4.5	9.5	937
	2013	*	3.0	7.8	7.2	0.0	3.1	3.2		7.7	7.9	7.8	11.7	859
	2014	*	5.9	4.1	4.0	0.0	0.7	1.3		4.1	4.8	4.4	10.1	792

NUMBER TESTED IN GRADE 6-8													
2012	12	25	895	884	44	394	617		511	426	937	29,211	
2013	5	33	816	794	34	418	590		443	416	859	29,692	
2014	1	17	772	768	32	402	618		415	377	792	30,015	

**AVERAGE PERCENTAGE OF ITEMS CORRECT BY REPORTING CATEGORY**

Grade	Year	REPORTING CATEGORY		
		1. Understanding Across Genres (GR 3-5) 1. Understanding/Analysis Across Genres (GR 6-8)	2. Understanding/Analysis of Literary Texts	3. Understanding/Analysis of Informational Texts
3	2012	55.1	49.4	58.7
	2013	60.3	54.1	56.2
	2014	59.9	57.4	52.1
4	2012	67.6	63.0	60.4
	2013	68.1	57.4	59.1
	2014	55.6	54.7	53.7
5	2012	64.5	59.4	67.3
	2013	68.3	67.6	67.8
	2014	69.9	65.5	67.5
3-5	2012	64.2	59.3	63.0
	2013	66.4	61.3	62.4
	2014	63.1	60.2	59.5

## AVERAGE PERCENTAGE OF ITEMS CORRECT BY REPORTING CATEGORY

Grade	Year	REPORTING CATEGORY		
		1. Understanding Across Genres (GR 3-5) 1. Understanding/Analysis Across Genres (GR 6-8)	2. Understanding/Analysis of Literary Texts	3. Understanding/Analysis of Informational Texts
6	2012	61.0	57.0	52.9
	2013	56.2	53.2	53.8
	2014	56.4	54.1	54.5
7	2012	65.6	57.4	57.3
	2013	52.9	52.3	62.2
	2014	59.5	50.9	51.0
8	2012	64.8	56.7	60.5
	2013	69.2	67.2	62.8
	2014	62.6	61.4	60.6
6-8	2012	63.9	57.0	57.2
	2013	59.3	57.5	59.4
	2014	59.6	55.4	55.3

## PERCENTAGE SATISFACTORY (Levels 2 and 3)

Test	Year	White	African Amer	Hispanic	Econ Disadv	Special Educ	LEP	At Risk	Migrant	Male	Female	All	District
ENGLISH I	2012												
	2013												
	2014	*	66.7	49.4	49.8	34.0	22.3	40.7		42.7	57.8	49.5	50.9
Tests Taken	2012												
	2013												
	2014	3	12	563	512	47	220	455		321	263	584	13,789
ENGLISH II	2012												
	2013												
	2014	*	46.2	54.0	53.5	14.3	27.9	43.8		46.4	62.3	53.8	54.8
Tests Taken	2012												
	2013												
	2014	3	13	422	389	28	129	347		235	207	442	10,943



## NUMBER UNSATISFACTORY (Level 1)

Test	Year	White	African Amer	Hispanic	Econ Disadv	Special Educ	LEP	At Risk	Migrant	Male	Female	All	District
ENGLISH I	2012												
	2013												
	2014	*	4	285	257	31	171	270		184	111	295	6,774
Tests Taken	2012												
	2013												
	2014	3	12	563	512	47	220	455		321	263	584	13,789
ENGLISH II	2012												
	2013												
	2014	*	7	194	181	24	93	195		126	78	204	4,948
Tests Taken	2012												
	2013												
	2014	3	13	422	389	28	129	347		235	207	442	10,943

## PERCENTAGE ADVANCED (Level 3)

Test	Year	White	African Amer	Hispanic	Econ Disadv	Special Educ	LEP	At Risk	Migrant	Male	Female	All	District
ENGLISH I	2012												
	2013												
	2014	*	0.0	0.5	0.6	0.0	0.9	0.4		0.3	0.8	0.5	3.2
Tests Taken	2012												
	2013												
	2014	3	12	563	512	47	220	455		321	263	584	13,789
ENGLISH II	2012												
	2013												
	2014	*	0.0	0.2	0.0	0.0	0.0	0.0		0.4	0.0	0.2	2.7
Tests Taken	2012												
	2013												
	2014	3	13	422	389	28	129	347		235	207	442	10,943

## AVERAGE PERCENTAGE OF ITEMS CORRECT BY REPORTING CATEGORY

ENGLISH I	1. Understanding & Analysis Across Genres	1. Average Rating Short Answer #1 <sup>1</sup>	1. Average Rating Short Answer #2 <sup>1</sup>	2. Understanding & Analysis of Literary Texts	3. Understanding & Analysis of Informational Texts	4. Expository Composition <sup>2</sup>	5. Revision	6. Editing
2012								
2013								
2014	60.4	0.9	1.2	60.6	54.6	3.9	62.6	47.9

ENGLISH II	1. Understanding & Analysis Across Genres	1. Average Rating Short Answer #1 <sup>1</sup>	1. Average Rating Short Answer #2 <sup>1</sup>	2. Understanding & Analysis of Literary Texts	3. Understanding & Analysis of Informational Texts	4. Persuasive Composition <sup>2</sup>	5. Revision	6. Editing
2012								
2013								
2014	72.9	0.9	1.2	49.3	62.1	4.1	64.3	65.7

<sup>1</sup>Short answer rating scale: 0=Insufficient; 1=Partially Sufficient; 2=Sufficient; 3=Exemplary

<sup>2</sup>Average score points (0-8). A composition is rated twice on a scale of 1 to 4, and the ratings are summed to determine score points for the composition. Score point scale: 0=Nonscorable; 2=Very Limited; 3=between Very Limited and Basic; 4=Basic; 5=between Basic and Satisfactory; 6=Satisfactory; 7=between Satisfactory and Accomplished; 8=Accomplished

**PERCENTAGE SATISFACTORY (Levels 2 or 3)**

Grade	Year	White	African Amer	Hispanic	Econ Disadv	Special Educ	LEP	At Risk	Migrant	Male	Female	All	District	Number Tested (All Students)
4	2012	*	33.3	57.9	55.6	37.5	58.2	51.5		48.6	67.4	57.0	60.6	193
	2013	*	62.5	62.9	63.6	*	60.8	62.5		54.8	72.9	63.0	63.9	154
	2014	*	37.5	51.9	51.8	0.0	52.6	43.0		51.4	52.6	52.0	61.9	148

NUMBER TESTED IN GRADE 4													
2012	1	9	183	187	8	110	136		107	86	193	7,039	
2013	3	8	143	151	4	102	112		84	70	154	6,771	
2014	4	8	135	137	10	78	114		72	76	148	7,022	

**PERCENTAGE SATISFACTORY (Levels 2 or 3)**

Grade	Year	White	African Amer	Hispanic	Econ Disadv	Special Educ	LEP	At Risk	Migrant	Male	Female	All	District	Number Tested (All Students)
7	2012	*	33.3	47.6	47.7	7.7	28.2	33.2		36.8	57.6	47.0	59.2	283
	2013	*	33.3	47.5	46.5	22.2	30.9	34.5		44.3	50.8	47.3	57.1	277
	2014	*	14.3	44.7	43.5	0.0	28.4	31.3		40.8	48.1	44.1	54.6	281

NUMBER TESTED IN GRADE 7													
2012	2	9	271	262	13	117	190		144	139	283	9,456	
2013	2	9	265	256	9	139	197		149	128	277	9,785	
2014	1	7	273	271	7	148	214		152	129	281	10,339	

**NUMBER UNSATISFACTORY (Level 1)**

Grade	Year	White	African Amer	Hispanic	Econ Disadv	Special Educ	LEP	At Risk	Migrant	Male	Female	All	District	Number Tested (All Students)
4	2012	*	6	77	83	5	46	66		55	28	83	2,772	193
	2013	*	3	53	55	*	40	42		38	19	57	2,442	154
	2014	*	5	65	66	10	37	65		35	36	71	2,675	148

NUMBER TESTED IN GRADE 4													
2012	1	9	183	187	8	110	136		107	86	193	7,039	
2013	3	8	143	151	4	102	112		84	70	154	6,771	
2014	4	8	135	137	10	78	114		72	76	148	7,022	

**NUMBER UNSATISFACTORY (Level 1)**

Grade	Year	White	African Amer	Hispanic	Econ Disadv	Special Educ	LEP	At Risk	Migrant	Male	Female	All	District	Number Tested (All Students)
7	2012	*	6	142	137	12	84	127		91	59	150	3,859	283
	2013	*	6	139	137	7	96	129		83	63	146	4,198	277
	2014	*	6	151	153	7	106	147		90	67	157	4,690	281

NUMBER TESTED IN GRADE 7													
2012	2	9	271	262	13	117	190		144	139	283	9,456	
2013	2	9	265	256	9	139	197		149	128	277	9,785	
2014	1	7	273	271	7	148	214		152	129	281	10,339	

**PERCENTAGE ADVANCED (Level 3)**

Grade	Year	White	African Amer	Hispanic	Econ Disadv	Special Educ	LEP	At Risk	Migrant	Male	Female	All	District	Number Tested (All Students)
4	2012	*	0.0	1.1	1.1	0.0	1.8	1.5		1.9	0.0	1.0	5.1	193
	2013	*	0.0	2.1	2.0	*	2.0	1.8		2.4	1.4	1.9	4.7	154
	2014	*	0.0	0.0	0.7	0.0	0.0	0.9		0.0	1.3	0.7	3.7	148

NUMBER TESTED IN GRADE 4													
2012	1	9	183	187	8	110	136		107	86	193	7,039	
2013	3	8	143	151	4	102	112		84	70	154	6,771	
2014	4	8	135	137	10	78	114		72	76	148	7,022	



**PERCENTAGE ADVANCED (Level 3)**

Grade	Year	White	African Amer	Hispanic	Econ Disadv	Special Educ	LEP	At Risk	Migrant	Male	Female	All	District	Number Tested (All Students)
7	2012	*	0.0	0.4	0.4	0.0	0.0	0.0		0.0	0.7	0.4	3.4	283
	2013	*	0.0	0.0	0.0	0.0	0.0	0.0		0.0	0.0	0.0	1.5	277
	2014	*	0.0	0.4	0.7	0.0	0.7	0.5		0.0	1.6	0.7	3.0	281

NUMBER TESTED IN GRADE 7													
2012	2	9	271	262	13	117	190		144	139	283	9,456	
2013	2	9	265	256	9	139	197		149	128	277	9,785	
2014	1	7	273	271	7	148	214		152	129	281	10,339	

**AVERAGE PERCENTAGE OF ITEMS CORRECT BY REPORTING CATEGORY**

Grade	Year	REPORTING CATEGORY			
		1. Composition <sup>1</sup> GR 4: Personal Narrative GR 7: Expository	1. Composition <sup>1</sup> GR 4: Expository GR 7: Personal Narrative	2. Revision	3. Editing
4	2012	1.8	1.9	60.2	55.8
	2013	4.0	3.6	55.9	60.7
	2014	3.9	3.9	59.8	51.2
7	2012	1.7	2.1	61.0	54.2
	2013	3.8	4.4	56.5	56.0
	2014	3.5	4.0	57.6	52.4

<sup>1</sup>Average score points (range 0-8). A STAAR composition is rated twice on a scale of 1 to 4, and the ratings are summed to determine score points for the composition. Score point scale: 0=Non-scorable; 2=Very Limited; 3=between Very Limited and Basic; 4=Basic; 5=between Basic and Satisfactory; 6=Satisfactory; 7=between Satisfactory and Accomplished; 8=Accomplished

**PERCENTAGE SATISFACTORY (Levels 2 or 3)**

Grade	Year	White	African Amer	Hispanic	Econ Disadv	Special Educ	LEP	At Risk	Migrant	Male	Female	All	District	Number Tested (All Students)
3	2012	*	25.0	57.9	57.4	*	59.0	56.1		51.0	62.7	57.0	55.4	293
	2013	*	60.0	57.5	57.4	41.2	57.3	54.0		64.2	50.6	57.8	57.5	327
	2014		50.0	55.5	55.8	28.6	53.4	50.9		50.0	61.4	55.5	59.3	319
4	2012		40.0	56.6	55.7	50.0	60.4	55.5		56.3	55.1	55.8	53.0	278
	2013	*	37.5	53.2	53.1	16.7	54.9	52.5		47.9	57.9	52.9	57.5	280
	2014	*	25.0	63.5	63.9	31.3	67.2	60.8		67.9	57.7	63.1	59.0	301
5	2012		66.7	63.5	63.5	16.7	61.9	57.9		62.4	65.2	63.8	64.1	271
	2013		*	82.3	82.6	63.6	85.8	80.8		80.0	84.3	82.0	81.7	255
	2014		*	85.3	85.3	*	84.2	84.8		82.3	88.7	85.6	81.4	263
3-5	2012	*	41.7	59.2	58.8	34.8	60.3	56.5		56.5	61.1	58.8	57.5	842
	2013	*	56.5	63.5	63.3	44.1	64.2	61.0		64.0	62.6	63.3	65.3	862
	2014	*	52.6	67.2	67.4	36.4	68.1	64.9		65.5	68.7	67.0	66.3	883

NUMBER TESTED IN GRADES 3-5													
2012	4	24	807	821	23	620	730		418	424	842	35,372	
2013	5	23	832	843	34	648	730		453	409	862	34,686	
2014	4	19	856	834	33	665	777		455	428	883	35,222	

**PERCENTAGE SATISFACTORY (Levels 2 or 3)**

Grade	Year	White	African Amer	Hispanic	Econ Disadv	Special Educ	LEP	At Risk	Migrant	Male	Female	All	District	Number Tested (All Students)
6	2012	*	37.5	48.9	48.7	0.0	42.8	38.6		50.6	45.5	48.4	66.4	285
	2013		30.8	42.8	41.0	22.2	34.4	33.2		40.6	44.4	42.4	60.6	297
	2014	*	50.0	53.4	53.4	46.7	46.2	44.9		51.6	55.2	53.3	64.3	244
7	2012	*	33.3	45.4	45.8	20.0	28.9	33.2		45.1	45.3	45.2	59.9	281
	2013	*	22.2	43.8	43.5	0.0	33.8	29.8		46.6	38.5	42.9	59.9	268
	2014	*	14.3	40.7	39.5	0.0	26.2	28.7		42.7	37.3	40.2	55.1	276
8	2012	*	*	43.1	43.1	33.3	28.0	32.2		45.2	41.7	43.6	51.9	289
	2013	*	70.0	74.2	73.0	46.7	65.7	68.8		76.0	72.7	74.4	74.0	195
	2014		*	75.4	75.5	72.7	59.6	69.5		77.6	73.3	75.4	73.2	232
6-8	2012	54.5	36.4	45.8	45.9	21.4	34.6	34.6		47.1	44.1	45.7	60.3	855
	2013	*	40.6	51.0	49.9	28.1	40.0	41.0		51.4	50.1	50.8	63.7	760
	2014	*	41.2	55.6	55.3	42.9	42.2	47.0		55.8	54.7	55.3	63.3	752

NUMBER TESTED IN GRADES 6-8													
2012	11	22	817	808	42	373	549		463	392	855	26,044	
2013	3	32	721	709	32	380	549		397	363	760	26,676	
2014	2	17	732	731	35	372	592		394	358	752	27,304	

**NUMBER UNSATISFACTORY (Level 1)**

Grade	Year	White	African Amer	Hispanic	Econ Disadv	Special Educ	LEP	At Risk	Migrant	Male	Female	All	District	Number Tested (All Students)
3	2012	*	6	118	121	*	98	118		70	56	126	5,287	293
	2013	*	4	134	136	10	105	133		62	76	138	5,086	327
	2014		3	138	134	10	103	132		83	59	142	4,988	319
4	2012		6	116	120	6	76	97		62	61	123	5,511	278
	2013	*	5	126	130	5	102	113		73	59	132	4,919	280
	2014	*	6	105	101	11	75	104		51	60	111	4,803	301
5	2012		2	95	97	5	72	88		50	48	98	4,228	271
	2013		*	44	43	4	25	39		28	18	46	2,035	255
	2014		*	38	37	*	34	37		23	15	38	2,088	263
3-5	2012	*	14	329	338	15	246	303		182	165	347	15,026	842
	2013	*	10	304	309	19	232	285		163	153	316	12,040	862
	2014	*	9	281	272	21	212	273		157	134	291	11,879	883

NUMBER TESTED IN GRADES 3-5													
2012	4	24	807	821	23	620	730		418	424	842	35,372	
2013	5	23	832	843	34	648	730		453	409	862	34,686	
2014	4	19	856	834	33	665	777		455	428	883	35,222	

**NUMBER UNSATISFACTORY (Level 1)**

Grade	Year	White	African Amer	Hispanic	Econ Disadv	Special Educ	LEP	At Risk	Migrant	Male	Female	All	District	Number Tested (All Students)
6	2012	*	5	139	142	9	91	121		80	67	147	3,327	285
	2013		9	162	167	7	118	147		92	79	171	4,133	297
	2014	*	3	110	110	8	71	108		62	52	114	3,478	244
7	2012	*	6	147	142	12	81	127		79	75	154	3,705	281
	2013	*	7	144	140	8	86	134		78	75	153	3,851	268
	2014	*	6	159	161	9	104	149		86	79	165	4,536	276
8	2012	*	*	157	153	12	72	141		86	77	163	3,319	289
	2013	*	3	47	48	8	24	43		23	27	50	1,709	195
	2014		*	56	56	3	40	57		26	31	57	2,001	232
6-8	2012	5	14	443	437	33	244	389		245	219	464	10,351	855
	2013	*	19	353	355	23	228	324		193	181	374	9,693	760
	2014	*	10	325	327	20	215	314		174	162	336	10,015	752

NUMBER TESTED IN GRADES 6-8													
2012	11	22	817	808	42	373	549		463	392	855	26,044	
2013	3	32	721	709	32	380	549		397	363	760	26,676	
2014	2	17	732	731	35	372	592		394	358	752	27,304	

PERCENTAGE ADVANCED (Level 3)

Grade	Year	White	African Amer	Hispanic	Econ Disadv	Special Educ	LEP	At Risk	Migrant	Male	Female	All	District	Number Tested (All Students)
3	2012	*	0.0	9.6	9.9	*	11.3	10.0		10.5	8.7	9.6	7.9	293
	2013	*	0.0	10.2	10.0	0.0	11.0	9.3		11.6	7.8	9.8	9.1	327
	2014		0.0	5.5	5.3	0.0	6.8	5.6		4.8	5.9	5.3	10.4	319
4	2012		10.0	7.5	7.4	0.0	8.3	7.3		7.0	8.1	7.6	6.1	278
	2013	*	0.0	5.2	5.8	0.0	6.2	5.9		3.6	7.9	5.7	9.5	280
	2014	*	0.0	13.5	13.2	0.0	14.8	12.8		16.4	9.2	13.0	14.0	301
5	2012		0.0	10.4	9.8	0.0	9.0	8.1		9.8	10.1	10.0	10.4	271
	2013		*	13.7	13.0	9.1	13.6	11.8		17.1	8.7	13.3	12.8	255
	2014		*	15.9	16.3	*	17.7	15.6		16.2	15.0	15.6	15.7	263
3-5	2012	*	4.2	9.2	9.0	0.0	9.7	8.6		9.1	9.0	9.0	8.1	842
	2013	*	0.0	9.6	9.5	2.9	10.0	8.9		10.8	8.1	9.5	10.4	862
	2014	*	0.0	11.3	11.3	3.0	13.1	11.2		12.1	9.8	11.0	13.3	883

NUMBER TESTED IN GRADE 3-5													
2012	4	24	807	821	23	620	696		418	424	842	35,372	
2013	5	23	832	843	34	648	730		453	409	862	34,686	
2014	4	19	856	834	33	665	777		455	428	883	35,222	

PERCENTAGE ADVANCED (Level 3)

Grade	Year	White	African Amer	Hispanic	Econ Disadv	Special Educ	LEP	At Risk	Migrant	Male	Female	All	District	Number Tested (All Students)
6	2012	*	12.5	3.3	3.6	0.0	1.9	2.5		4.3	2.4	3.5	9.8	285
	2013		0.0	1.4	1.1	0.0	0.6	0.5		1.9	0.7	1.3	8.5	297
	2014	*	0.0	3.8	3.8	0.0	3.0	2.6		3.9	3.4	3.7	9.6	244
7	2012	*	0.0	0.7	0.8	0.0	0.0	0.0		0.7	0.7	0.7	6.3	281
	2013	*	0.0	0.4	0.4	0.0	0.0	0.0		0.7	0.0	0.4	4.8	268
	2014	*	0.0	1.9	2.3	0.0	1.4	1.0		2.7	1.6	2.2	6.7	276
8	2012	*	*	0.0	0.0	0.0	0.0	0.0		0.0	0.0	0.0	0.4	289
	2013	*	0.0	0.0	0.0	0.0	0.0	0.0		0.0	0.0	0.0	0.9	195
	2014		*	0.4	0.4	0.0	0.0	0.0		0.9	0.0	0.4	1.0	232
6-8	2012	0.0	4.5	1.3	1.5	0.0	0.8	0.8		1.7	1.0	1.4	6.1	855
	2013	*	0.0	0.7	0.6	0.0	0.3	0.2		1.0	0.3	0.7	5.3	760
	2014	*	0.0	2.0	2.2	0.0	1.6	1.2		2.5	1.7	2.1	6.2	752

NUMBER TESTED IN GRADE 6-8													
2012	11	22	817	808	42	373	595		463	392	855	26,044	
2013	3	32	721	709	32	380	549		397	363	760	26,676	
2014	2	17	732	731	35	372	592		394	358	752	27,304	



**AVERAGE PERCENTAGE OF ITEMS CORRECT BY REPORTING CATEGORY**

Grade	Year	REPORTING CATEGORY				
		1. Numbers, Operations, and Quantitative Reasoning	2. Patterns, Relationships, and Algebraic Reasoning	3. Geometry and Spatial Reasoning	4. Measurement	5. Probability and Statistics
3	2012	59.6	56.9	68.1	58.7	49.1
	2013	61.2	57.5	67.2	66.8	62.1
	2014	60.9	58.1	58.7	59.6	52.9
4	2012	60.0	62.9	64.6	56.3	57.7
	2013	61.0	59.7	66.6	59.5	47.9
	2014	62.1	68.6	71.7	60.5	61.0
5	2012	60.8	60.0	62.6	53.7	62.9
	2013	67.6	65.2	65.3	64.6	72.1
	2014	69.3	66.2	72.5	62.1	68.8
3-5	2012	60.1	59.9	65.2	56.3	56.4
	2013	63.0	60.5	66.5	63.8	60.4
	2014	63.8	64.1	67.2	60.7	60.4

**AVERAGE PERCENTAGE OF ITEMS CORRECT BY REPORTING CATEGORY**

Grade	Year	REPORTING CATEGORY				
		1. Numbers, Operations, and Quantitative Reasoning	2. Patterns, Relationships, and Algebraic Reasoning	3. Geometry and Spatial Reasoning	4. Measurement	5. Probability and Statistics
6	2012	38.4	50.8	42.0	43.4	41.7
	2013	45.5	43.9	37.7	34.8	39.2
	2014	47.2	45.3	45.3	43.6	46.5
7	2012	44.5	46.2	46.6	34.5	42.6
	2013	45.0	47.8	45.2	30.1	36.7
	2014	52.5	40.1	43.4	38.0	44.5
8	2012	42.0	39.3	33.6	35.3	42.0
	2013	50.3	49.4	44.2	42.4	39.9
	2014	51.1	49.7	48.9	42.1	49.1
6-8	2012	41.6	45.4	40.7	37.7	42.1
	2013	46.6	46.7	42.0	35.1	38.5
	2014	50.4	44.7	45.7	41.1	46.6

## PERCENTAGE SATISFACTORY (Levels 2 or 3)

Test	Year	White	African Amer	Hispanic	Econ Disadv	Special Educ	LEP	At Risk	Migrant	Male	Female	All	District
<b>ALGEBRA I</b>	<b>2012</b>	*	66.7	80.6	79.2	60.0	65.8	75.0		81.3	77.6	79.6	74.7
	<b>2013</b>	*	72.7	80.7	80.2	68.8	73.1	73.5		76.4	85.1	80.6	72.5
	<b>2014</b>	*	87.5	79.6	80.3	76.0	66.7	74.3		77.8	81.4	79.5	78.0
Tests Taken	<b>2012</b>	1	15	294	289	20	79	223		166	147	313	8,795
	<b>2013</b>	3	11	352	338	16	93	223		191	181	372	9,251
	<b>2014</b>	1	8	279	254	25	81	206		153	140	293	9,524

## NUMBER UNSATISFACTORY (Level 1)

Test	Year	White	African Amer	Hispanic	Econ Disadv	Special Educ	LEP	At Risk	Migrant	Male	Female	All	District
<b>ALGEBRA I</b>	<b>2012</b>	*	5	57	60	8	27	44		31	33	64	2,226
	<b>2013</b>	*	3	68	67	5	25	59		45	27	72	2,540
	<b>2014</b>	*	1	57	50	6	27	53		34	26	60	2,099
Tests Taken	<b>2012</b>	1	15	294	289	20	79	223		166	147	313	8,795
	<b>2013</b>	3	11	352	338	16	93	223		191	181	372	9,251
	<b>2014</b>	1	8	279	254	25	81	206		153	140	293	9,524

## PERCENTAGE ADVANCED (Level 3)

Test	Year	White	African Amer	Hispanic	Econ Disadv	Special Educ	LEP	At Risk	Migrant	Male	Female	All	District
<b>ALGEBRA I</b>	<b>2012</b>	*	0.0	1.7	1.7	0.0	1.3	0.6		1.2	2.0	1.6	7.0
	<b>2013</b>	*	0.0	5.7	5.9	0.0	3.2	1.8		6.8	3.9	5.4	8.6
	<b>2014</b>	*	0.0	5.7	5.5	4.0	1.2	2.4		5.2	6.4	5.8	9.9
Tests Taken	<b>2012</b>	1	15	294	289	20	79	176		166	147	313	8,795
	<b>2013</b>	3	11	352	338	16	93	223		191	181	372	9,251
	<b>2014</b>	1	8	279	254	25	81	206		153	140	293	9,524

## AVERAGE PERCENTAGE OF ITEMS CORRECT BY REPORTING CATEGORY

<b>ALGEBRA I</b>	1. Functional Relationships	2. Properties and Attributes of Functions	3. Linear Functions	4. Linear Equations and Inequalities	5. Quadratic and Other Nonlinear Functions
<b>2012</b>	51.6	47.3	46.5	43.7	50.1
<b>2013</b>	54.5	45.7	49.5	49.9	50.2
<b>2014</b>	47.0	48.1	53.8	49.1	50.1

**PERCENTAGE SATISFACTORY (Levels 2 or 3)**

Grade	Year	White	African Amer	Hispanic	Econ Disadv	Special Educ	LEP	At Risk	Migrant	Male	Female	All	District	Number Tested (All Students)
5	2012		50.0	56.2	56.3	16.7	50.5	48.1		59.4	53.7	56.5	58.2	269
	2013		50.0	64.5	64.0	60.0	64.2	62.4		73.2	53.8	64.3	65.1	255
	2014		*	64.2	64.1	*	63.8	62.1		62.7	65.5	64.1	61.3	234

NUMBER TESTED IN GRADE 5													
2012		6	260	263	6	186	206		133	136	269	10,697	
2013		6	248	247	10	176	202		138	117	255	10,180	
2014		5	229	223	5	188	214		118	116	234	9,073	

## PERCENTAGE SATISFACTORY (Levels 2 or 3)

Grade	Year	White	African Amer	Hispanic	Econ Disadv	Special Educ	LEP	At Risk	Migrant	Male	Female	All	District	Number Tested (All Students)
8	2012	33.3	71.4	53.5	53.5	31.6	24.0	36.9		56.9	49.4	53.4	54.0	348
	2013	*	41.7	69.8	67.2	21.4	53.4	54.8		75.9	62.1	69.1	65.8	265
	2014		*	51.2	51.9	27.3	19.0	38.2		59.2	44.8	52.0	61.9	250

NUMBER TESTED IN GRADE 8													
2012	6	7	333	327	19	104	217		188	160	348	9,431	
2013	3	12	248	241	14	73	157		133	132	265	8,998	
2014		5	244	243	11	100	191		125	125	250	9,466	



## NUMBER UNSATISFACTORY (Level 1)

Grade	Year	White	African Amer	Hispanic	Econ Disadv	Special Educ	LEP	At Risk	Migrant	Male	Female	All	District	Number Tested (All Students)
5	2012		3	114	115	5	92	107		54	63	117	4476	269
	2013		3	88	89	4	63	76		37	54	91	3551	255
	2014		*	82	80	*	68	81		44	40	84	3511	234

NUMBER TESTED IN GRADE 5													
2012		6	260	263	6	186	206		133	136	269	10,697	
2013		6	248	247	10	176	202		138	117	255	10,180	
2014		5	229	223	5	188	214		118	116	234	9,073	

**NUMBER UNSATISFACTORY (Level 1)**

Grade	Year	White	African Amer	Hispanic	Econ Disadv	Special Educ	LEP	At Risk	Migrant	Male	Female	All	District	Number Tested (All Students)
8	2012	4	2	155	152	13	79	137		81	81	162	4335	348
	2013	*	7	75	79	11	34	71		32	50	82	3074	265
	2014		*	119	117	8	81	118		51	69	120	3605	250

NUMBER TESTED IN GRADE 8													
2012	6	7	333	327	19	104	217		188	160	348	9,431	
2013	3	12	248	241	14	73	157		133	132	265	8,998	
2014		5	244	243	11	100	191		125	125	250	9,466	

**PERCENTAGE ADVANCED (Level 3)**

Grade	Year	White	African Amer	Hispanic	Econ Disadv	Special Educ	LEP	At Risk	Migrant	Male	Female	All	District	Number Tested (All Students)
5	2012		0.0	7.3	6.8	16.7	7.5	6.8		6.8	7.4	7.1	6.5	269
	2013		0.0	5.2	4.9	0.0	4.0	4.0		5.8	4.3	5.1	6.6	255
	2014		*	2.6	2.7	*	3.2	2.8		3.4	1.7	2.6	5.3	234

NUMBER TESTED IN GRADE 5													
2012		6	260	263	6	186	206		133	136	269	10,697	
2013		6	248	247	10	176	202		138	117	255	10,180	
2014		5	229	223	5	188	214		118	116	234	9,073	

## PERCENTAGE ADVANCED (Level 3)

Grade	Year	White	African Amer	Hispanic	Econ Disadv	Special Educ	LEP	At Risk	Migrant	Male	Female	All	District	Number Tested (All Students)
8	2012	0.0	0.0	2.4	2.4	0.0	0.0	0.5		2.1	2.5	2.3	4.2	348
	2013	*	8.3	4.0	4.1	0.0	2.7	3.2		6.8	2.3	4.5	7.1	265
	2014		*	7.0	7.4	0.0	0.0	1.0		12.8	2.4	7.6	11.3	250

NUMBER TESTED IN GRADE 8													
2012	6	7	333	327	19	104	217		188	160	348	9,431	
2013	3	12	248	241	14	73	157		133	132	265	8,998	
2014		5	244	243	11	100	191		125	125	250	9,466	

**AVERAGE PERCENTAGE OF ITEMS CORRECT BY REPORTING CATEGORY**

Grade	Year	REPORTING CATEGORY			
		1. Matter and Energy	2. Force, Motion, and Energy	3. Earth and Space	4. Organisms and Environments
5	2012	73.7	74.9	65.0	61.3
	2013	65.8	71.5	58.4	61.0
	2014	63.2	64.4	57.9	62.3
8	2012	53.6	54.2	54.4	54.4
	2013	62.5	58.9	59.8	56.3
	2014	55.6	54.5	54.5	63.9

## PERCENTAGE SATISFACTORY (Levels 2 and 3)

Test	Year	White	African Amer	Hispanic	Econ Disadv	Special Educ	LEP	At Risk	Migrant	Male	Female	All	District
<b>BIOLOGY</b>	<b>2012</b>	*	76.9	88.9	88.6	76.2	80.9	82.8		90.1	86.9	88.6	82.9
	<b>2013</b>	*	58.3	82.6	81.9	68.8	71.6	73.5		82.4	82.1	82.3	84.4
	<b>2014</b>	*	87.5	92.0	92.2	60.9	83.1	88.7		91.1	92.3	91.7	89.8
Tests Taken	<b>2012</b>	1	13	324	307	21	94	198		182	160	342	8,881
	<b>2013</b>	2	12	340	332	16	88	211		193	168	361	9,374
	<b>2014</b>	2	8	324	293	23	83	222		169	169	338	9,672

## NUMBER UNSATISFACTORY (Level 1)

Test	Year	White	African Amer	Hispanic	Econ Disadv	Special Educ	LEP	At Risk	Migrant	Male	Female	All	District
<b>BIOLOGY</b>	<b>2012</b>	*	3	36	35	5	18	34		18	21	39	1,522
	<b>2013</b>	*	5	59	60	5	25	56		34	30	64	1,467
	<b>2014</b>	*	1	26	23	9	14	25		15	13	28	987
Tests Taken	<b>2012</b>	1	13	324	307	21	94	198		182	160	342	8,881
	<b>2013</b>	2	12	340	332	16	88	211		193	168	361	9,374
	<b>2014</b>	2	8	324	293	23	83	222		169	169	338	9,672

## PERCENTAGE ADVANCED (Level 3)

Test	Year	White	African Amer	Hispanic	Econ Disadv	Special Educ	LEP	At Risk	Migrant	Male	Female	All	District
<b>BIOLOGY</b>	<b>2012</b>	*	0.0	5.2	4.9	4.8	2.1	1.5		7.1	2.5	5.0	4.8
	<b>2013</b>	*	8.3	4.4	4.8	0.0	2.3	1.4		7.3	1.8	4.7	7.5
	<b>2014</b>	*	0.0	2.5	2.7	0.0	1.2	0.9		3.0	1.8	2.4	7.5
Tests Taken	<b>2012</b>	1	13	324	307	21	94	198		182	160	342	8,881
	<b>2013</b>	2	12	340	332	16	88	211		193	168	361	9,374
	<b>2014</b>	2	8	324	293	23	83	222		169	169	338	9,672



## AVERAGE PERCENTAGE OF ITEMS CORRECT BY REPORTING CATEGORY

<b>BIOLOGY</b>	1. Cell Structure and Function	2. Mechanisms of Genetics	3. Biological Evolution and Classification	4. Biological Processes and Systems	5. Interdependence within Environmental Systems
<b>2012</b>	55.1	53.9	59.3	49.7	57.5
<b>2013</b>	51.4	48.6	59.6	50.4	50.0
<b>2014</b>	45.1	57.2	61.0	58.5	50.3

**PERCENTAGE SATISFACTORY (Levels 2 or 3)**

Grade	Year	White	African Amer	Hispanic	Econ Disadv	Special Educ	LEP	At Risk	Migrant	Male	Female	All	District	Number Tested (All Students)
8	2012	66.7	57.1	57.3	57.1	45.0	32.1	43.4		67.2	45.6	57.4	52.5	352
	2013	*	33.3	46.3	44.5	7.7	29.2	28.9		52.7	39.7	46.2	59.3	262
	2014		*	32.4	32.1	27.3	6.0	20.4		38.4	27.2	32.8	53.5	250

NUMBER TESTED IN GRADE 8													
2012	6	7	337	331	20	106	221		192	160	352	9,392	
2013	2	12	246	238	13	72	152		131	131	262	8,991	
2014		5	244	243	11	100	191		125	125	250	9,464	

**NUMBER UNSATISFACTORY (Level 1)**

Grade	Year	White	African Amer	Hispanic	Econ Disadv	Special Educ	LEP	At Risk	Migrant	Male	Female	All	District	Number Tested (All Students)
8	2012	2	3	144	142	11	72	125		63	87	150	4462	352
	2013	*	8	132	132	12	51	108		62	79	141	3656	262
	2014		*	165	165	8	94	152		77	91	168	4402	250

NUMBER TESTED IN GRADE8													
2012	6	7	337	331	20	106	221		192	160	352	9,392	
2013	2	12	246	238	13	72	152		131	131	262	8,991	
2014		5	244	243	11	100	191		125	125	250	9,464	

**PERCENTAGE ADVANCED (Level 3)**

Grade	Year	White	African Amer	Hispanic	Econ Disadv	Special Educ	LEP	At Risk	Migrant	Male	Female	All	District	Number Tested (All Students)
8	2012	16.7	0.0	6.8	6.9	5.0	2.8	2.3		10.4	2.5	6.8	7.1	352
	2013	*	8.3	1.2	1.7	0.0	0.0	0.7		2.3	1.5	1.9	8.8	262
	2014		*	1.6	1.6	0.0	0.0	0.5		2.4	1.6	2.0	7.3	250

NUMBER TESTED IN GRADE 8													
2012	6	7	337	331	20	106	221		192	160	352	9,392	
2013	2	12	246	238	13	72	152		131	131	262	8,991	
2014		5	244	243	11	100	191		125	125	250	9,464	

## AVERAGE PERCENTAGE OF ITEMS CORRECT BY REPORTING CATEGORY

Grade	Year	REPORTING CATEGORY			
		1. History	2. Geography and Culture	3. Government and Citizenship	4. Economics, Science, Technology, and Society
8	2012	51.6	57.0	47.9	49.9
	2013	52.3	55.3	38.0	47.7
	2014	46.8	37.4	43.3	47.1

## PERCENTAGE SATISFACTORY (Levels 2 or 3)

Test	Year	White	African Amer	Hispanic	Econ Disadv	Special Educ	LEP	At Risk	Migrant	Male	Female	All	District
U.S. HISTORY	2012												*
	2013												90.2
	2014	*	100.0	95.9	96.1	69.2	86.2	94.2		97.3	94.9	96.2	92.0
Tests Taken	2012												4
	2013												51
	2014	2	13	267	257	13	58	190		150	136	286	7,801

## NUMBER UNSATISFACTORY (Level 1)

Test	Year	White	African Amer	Hispanic	Econ Disadv	Special Educ	LEP	At Risk	Migrant	Male	Female	All	District
U.S. HISTORY	2012												*
	2013												5
	2014	*	0	11	10	4	8	11		4	7	11	625
Tests Taken	2012												4
	2013												51
	2014	2	13	267	257	13	58	190		150	136	286	7,801

## PERCENTAGE ADVANCED (Level 3)

Test	Year	White	African Amer	Hispanic	Econ Disadv	Special Educ	LEP	At Risk	Migrant	Male	Female	All	District
U.S. HISTORY	2012												*
	2013												2.0
	2014	*	15.4	4.1	3.9	0.0	1.7	2.6		6.0	2.9	4.5	10.3
Tests Taken	2012												4
	2013												51
	2014	2	13	267	257	13	58	190		150	136	286	7,801



## AVERAGE PERCENTAGE OF ITEMS CORRECT BY REPORTING CATEGORY

U.S. HISTORY	1. History	2. Geography and Culture	3. Government and Citizenship	4. Economics, Science, Technology, and Society
2012				
2013				
2014	56.7	65.0	64.5	66.8

**PERCENTAGE SATISFACTORY (Levels 2 or 3)**

Grade	Year	White	African Amer	Hispanic	Econ Disadv	Special Educ	LEP	At Risk	Migrant	Male	Female	All	District	Number Tested (All Students)
3	2012	*		68.3	68.9	*	68.4	68.4		61.4	75.4	68.4	65.5	228
	2013	*		73.2	73.1	11.1	73.2	73.5		67.2	79.6	73.4	69.6	229
	2014			57.6	57.0	10.0	57.4	57.4		50.9	65.0	57.6	65.2	210
4	2012		*	71.1	72.2	*	71.6	71.6		61.8	77.2	71.4	64.4	91
	2013			57.6	57.6	*	58.5	59.3		42.6	69.2	57.6	61.0	139
	2014			59.5	58.1	14.3	59.6	59.2		50.5	71.6	59.5	60.8	158
5	2012			58.1	58.1	*	58.1	58.1		50.0	64.0	58.1	72.1	86
	2013			91.5	91.2	*	93.1	91.2		86.4	94.6	91.5	86.5	59
	2014			67.7	70.7	*	67.7	68.9		50.0	80.6	67.7	83.0	62
3-5	2012	*	*	66.7	67.3	11.1	66.9	66.9		59.2	73.3	66.9	66.8	405
	2013	*		70.7	70.4	30.8	71.3	71.3		61.8	78.5	70.7	70.6	427
	2014			59.8	59.3	11.1	59.7	59.7		50.7	70.0	59.8	68.7	430

NUMBER TESTED IN GRADES 3-5													
2012	1	1	403	401	9	402	402		184	221	405	14,102	
2013	1		426	423	13	421	418		199	228	427	13,810	
2014			430	413	18	427	427		227	203	430	14,654	

**NUMBER UNSATISFACTORY (Level 1)**

Grade	Year	White	African Amer	Hispanic	Econ Disadv	Special Educ	LEP	At Risk	Migrant	Male	Female	All	District	Number Tested (All Students)
3	2012	*		72	70	*	72	72		44	28	72	1,957	228
	2013	*		61	61	8	61	60		38	23	61	1,697	229
	2014			89	89	9	89	89		54	35	89	2,005	210
4	2012		*	26	25	*	25	25		13	13	26	1,728	91
	2013			59	59	*	56	55		35	24	59	1,915	139
	2014			64	62	6	63	64		45	19	64	1,891	158
5	2012			36	36	*	36	36		18	18	36	998	86
	2013			5	5	*	4	5		3	2	5	449	59
	2014			20	17	*	20	19		13	7	20	692	62
3-5	2012	*	*	134	131	8	133	133		75	59	134	4,683	405
	2013	*		125	125	9	121	120		76	49	125	4,061	427
	2014			173	168	16	172	172		112	61	173	4,588	430

NUMBER TESTED IN GRADES 3-5													
2012	1	1	403	401	9	402	402			184	221	405	14,102
2013	1		426	423	13	421	418			199	228	427	13,810
2014			430	413	18	427	427			227	203	430	14,654

PERCENTAGE ADVANCED (Level 3)

Grade	Year	White	African Amer	Hispanic	Econ Disadv	Special Educ	LEP	At Risk	Migrant	Male	Female	All	District	Number Tested (All Students)
3	2012	*		17.2	16.9	*	17.1	17.1		14.0	20.2	17.1	13.4	228
	2013	*		23.2	22.9	0.0	23.2	23.5		25.9	20.4	23.1	17.4	229
	2014			10.5	10.1	0.0	10.5	10.5		5.5	16.0	10.5	17.6	210
4	2012		*	10.0	11.1	*	10.2	10.2		17.6	7.0	11.0	13.0	91
	2013			12.2	12.2	*	12.6	12.6		14.8	10.3	12.2	13.4	139
	2014			7.6	7.4	0.0	7.7	7.6		6.6	9.0	7.6	12.5	158
5	2012			4.7	4.7	*	4.7	4.7		2.8	6.0	4.7	12.1	86
	2013			18.6	19.3	*	19.0	19.3		18.2	18.9	18.6	11.6	59
	2014			11.3	12.1	*	11.3	11.5		0.0	19.4	11.3	15.8	62
3-5	2012	*	*	12.9	13.0	0.0	12.9	12.9		12.5	13.6	13.1	12.9	405
	2013	*		19.0	18.9	0.0	19.2	19.4		21.6	16.7	19.0	14.6	427
	2014			9.5	9.4	0.0	9.6	9.6		5.3	14.3	9.5	15.4	430

NUMBER TESTED IN GRADE 3-5													
2012	1	1	403	401	9	402	402		184	221	405	14,102	
2013	1		426	423	13	421	418		199	228	427	13,810	
2014			430	413	18	427	427		227	203	430	14,654	

**AVERAGE PERCENTAGE OF ITEMS CORRECT BY REPORTING CATEGORY**

Grade	Year	REPORTING CATEGORY		
		1. Understanding Across Genres	2. Understanding/Analysis of Literary Texts	3. Understanding/Analysis of Informational Texts
3	2012	69.6	60.5	52.7
	2013	60.2	63.0	64.1
	2014	61.0	51.2	54.9
4	2012	55.5	65.3	60.1
	2013	60.7	60.8	52.9
	2014	60.3	55.2	59.4
5	2012	50.2	60.3	55.9
	2013	61.5	65.0	70.0
	2014	55.2	61.4	60.2
3-5	2012	62.3	61.6	55.0
	2013	60.5	62.5	61.3
	2014	59.9	54.1	57.3

**PERCENTAGE SATISFACTORY (Levels 2 or 3)**

Grade	Year	White	African Amer	Hispanic	Econ Disadv	Special Educ	LEP	At Risk	Migrant	Male	Female	All	District	Number Tested (All Students)
4	2012		*	72.5	73.6	*	73.0	73.0		64.7	77.6	72.8	68.9	92
	2013			53.3	53.3	*	52.7	54.2		38.3	65.3	53.3	62.2	135
	2014			60.5	59.9	0.0	60.3	60.3		52.8	70.6	60.5	65.6	157

NUMBER TESTED IN GRADE 4													
2012		1	91	91	3	89	89		34	58	92	4,905	
2013			135	135	2	131	131		60	75	135	4,958	
2014			157	147	7	156	156		89	68	157	4,841	

**NUMBER UNSATISFACTORY (Level 1)**

Grade	Year	White	African Amer	Hispanic	Econ Disadv	Special Educ	LEP	At Risk	Migrant	Male	Female	All	District	Number Tested (All Students)
4	2012		*	25	24	*	24	24		12	13	25	1,524	92
	2013			63	63	*	62	60		37	26	63	1,876	135
	2014			62	59	7	62	62		42	20	62	1,667	157

NUMBER TESTED IN GRADE 4													
2012		1	91	91	3	89	89		34	58	92	4,905	
2013			135	135	2	131	131		60	75	135	4,958	
2014			157	147	7	156	156		89	68	157	4,841	

**PERCENTAGE ADVANCED (Level 3)**

Grade	Year	White	African Amer	Hispanic	Econ Disadv	Special Educ	LEP	At Risk	Migrant	Male	Female	All	District	Number Tested (All Students)
4	2012		*	3.3	4.4	*	3.4	3.4		2.9	5.2	4.3	4.3	92
	2013			5.2	5.2	*	5.3	5.3		5.0	5.3	5.2	3.6	135
	2014			3.2	2.7	0.0	3.2	3.2		2.2	4.4	3.2	5.9	157

NUMBER TESTED IN GRADE 4													
2012		1	91	91	3	89	89		34	58	92	4,905	
2013			135	135	2	131	131		60	75	135	4,958	
2014			157	147	7	156	156		89	68	157	4,841	



**AVERAGE PERCENTAGE OF ITEMS CORRECT BY REPORTING CATEGORY**

Grade	Year	REPORTING CATEGORY			
		1. Composition <sup>1</sup> Personal Narrative	1. Composition <sup>1</sup> Expository	2. Revision	3. Editing
4	2012	1.8	1.8	59.1	66.0
	2013	4.2	4.1	57.4	63.0
	2014	4.3	4.2	60.7	61.5

<sup>1</sup>Average score points (range 0-8). A STAAR composition is rated twice on a scale of 1 to 4, and the ratings are summed to determine score points for the composition. Score point scale: 0=Nonscorable; 2=Very Limited; 3=between Very Limited and Basic; 4=Basic; 5=between Basic and Satisfactory; 6=Satisfactory; 7=between Satisfactory and Accomplished; 8=Accomplished

**PERCENTAGE SATISFACTORY (Levels 2 or 3)**

Grade	Year	White	African Amer	Hispanic	Econ Disadv	Special Educ	LEP	At Risk	Migrant	Male	Female	All	District	Number Tested (All Students)
3	2012			*	*		*	*		*	*	*	36.6	4
	2013			*	*		*	*			*	*	20.5	3
	2014			*	*	*	*	*		*	*	*	23.0	4
4	2012			0.0	0.0		0.0	0.0		*	*	0.0	28.4	7
	2013			0.0	0.0		0.0	*		*	*	0.0	27.3	8
	2014			*	*		*	*		*	*	*	22.8	5
5	2012			*	*		*	*		*	*	*	24.1	2
	2013			30.0	22.2		30.0	25.0		*	33.3	30.0	41.5	10
	2014			0.0	0.0	*	0.0	0.0		0.0	*	0.0	38.8	13
3-5	2012			7.7	8.3		8.3	8.3		16.7	0.0	7.7	31.7	13
	2013			14.3	10.0		15.8	15.4		14.3	14.3	14.3	30.9	21
	2014			4.5	4.8	*	5.0	4.8		0.0	14.3	4.5	29.2	22

NUMBER TESTED IN GRADES 3-5													
2012			13	12		12	12		6	7	13	259	
2013			21	20		19	13		7	14	21	233	
2014			22	21	2	20	21		15	7	22	295	

**NUMBER UNSATISFACTORY (Level 1)**

Grade	Year	White	African Amer	Hispanic	Econ Disadv	Special Educ	LEP	At Risk	Migrant	Male	Female	All	District	Number Tested (All Students)
3	2012			*	*		*	*		*	*	*	83	4
	2013			*	*		*	*			*	*	58	3
	2014			*	*	*	*	*		*	*	*	77	4
4	2012			7	6		6	6		*	*	7	53	7
	2013			8	8		6	*		*	*	8	48	8
	2014			*	*		*	*		*	*	*	61	5
5	2012			*	*		*	*		*	*	*	41	2
	2013			7	7		7	6		*	4	7	55	10
	2014			13	12	*	12	12		10	*	13	71	13
3-5	2012			12	11		11	11		5	7	12	177	13
	2013			18	18		16	11		6	12	18	161	21
	2014			21	20	*	19	20		15	6	21	209	22

NUMBER TESTED IN GRADES 3-5													
2012			13	12		12	12			6	7	13	259
2013			21	20		19	13			7	14	21	233
2014			22	21	2	20	21			15	7	22	295

PERCENTAGE ADVANCED (Level 3)

Grade	Year	White	African Amer	Hispanic	Econ Disadv	Special Educ	LEP	At Risk	Migrant	Male	Female	All	District	Number Tested (All Students)
3	2012			*	*		*	*		*	*	*	0.8	4
	2013			*	*		*	*			*	*	1.4	3
	2014			*	*	*	*	*		*	*	*	0.0	4
4	2012			0.0	0.0		0.0	0.0		*	*	0.0	2.7	7
	2013			0.0	0.0		0.0	*		*	*	0.0	3.0	8
	2014			*	*		*	*		*	*	*	1.3	5
5	2012			*	*		*	*		*	*	*	1.9	2
	2013			0.0	0.0		0.0	0.0		*	0.0	0.0	1.1	10
	2014			0.0	0.0	*	0.0	0.0		0.0	*	0.0	0.9	13
3-5	2012			7.7	8.3		8.3	8.3		16.7	0.0	7.7	1.5	13
	2013			0.0	0.0		0.0	0.0		0.0	0.0	0.0	1.7	21
	2014			0.0	0.0	*	0.0	0.0		0.0	0.0	0.0	0.7	22

NUMBER TESTED IN GRADE 3-5													
2012			13	12		12	12		6	7	13	259	
2013			21	20		19	13		7	14	21	233	
2014			22	21	2	20	21		15	7	22	295	

**AVERAGE PERCENTAGE OF ITEMS CORRECT BY REPORTING CATEGORY**

Grade	Year	REPORTING CATEGORY				
		1. Numbers, Operations, and Quantitative Reasoning	2. Patterns, Relationships, and Algebraic Reasoning	3. Geometry and Spatial Reasoning	4. Measurement	5. Probability and Statistics
3	2012	*	*	*	*	*
	2013	*	*	*	*	*
	2014	*	*	*	*	*
4	2012	42.9	38.1	42.9	39.3	25.7
	2013	32.4	33.3	47.9	40.6	25.0
	2014	*	*	*	*	*
5	2012	*	*	*	*	*
	2013	43.9	61.7	35.7	42.5	56.4
	2014	40.2	29.5	39.6	23.1	40.6
3-5	2012	42.9	36.9	44.9	44.2	27.9
	2013	40.8	49.2	40.6	42.3	39.5
	2014	42.4	35.4	39.0	28.4	37.6

**PERCENTAGE SATISFACTORY (Levels 2 or 3)**

Grade	Year	White	African Amer	Hispanic	Econ Disadv	Special Educ	LEP	At Risk	Migrant	Male	Female	All	District	Number Tested (All Students)
5	2012			*	*		*	*		*	*	*	45.4	4
	2013			0.0	0.0		0.0	0.0		*	0.0	0.0	43.0	11
	2014			30.0	28.9	*	30.8	30.0		25.0	35.0	30.0	55.6	40

NUMBER TESTED IN GRADE 5													
2012			4	4		4	4		3	1	4		1,164
2013			11	10		11	9		5	6	11		1,122
2014			40	38	1	39	40		20	20	40		2,304

**NUMBER UNSATISFACTORY (Level 1)**

Grade	Year	White	African Amer	Hispanic	Econ Disadv	Special Educ	LEP	At Risk	Migrant	Male	Female	All	District	Number Tested (All Students)
5	2012			*	*		*	*		*	*	*	636	4
	2013			11	10		11	9		*	6	11	640	11
	2014			28	27	*	27	28		15	13	28	1022	40

NUMBER TESTED IN GRADE 5													
2012			4	4		4	4		3	1	4		1,164
2013			11	10		11	9		5	6	11		1,122
2014			40	38	1	39	40		20	20	40		2,304

**PERCENTAGE ADVANCED (Level 3)**

Grade	Year	White	African Amer	Hispanic	Econ Disadv	Special Educ	LEP	At Risk	Migrant	Male	Female	All	District	Number Tested (All Students)
5	2012			*	*		*	*		*	*	*	2.2	4
	2013			0.0	0.0		0.0	0.0		*	0.0	0.0	1.9	11
	2014			2.5	2.6	*	2.6	2.5		0.0	5.0	2.5	2.9	40

NUMBER TESTED IN GRADE 5													
2012			4	4		4	4		3	1	4	1,164	
2013			11	10		11	9		5	6	11	1,122	
2014			40	38	1	39	40		20	20	40	2,304	



## AVERAGE PERCENTAGE OF ITEMS CORRECT BY REPORTING CATEGORY

Grade	Year	REPORTING CATEGORY			
		1. Matter and Energy	2. Force, Motion, and Energy	3. Earth and Space	4. Organisms and Environments
5	2012	*	*	*	*
	2013	39.8	44.5	47.0	43.5
	2014	50.9	53.3	47.1	50.5

**PERCENTAGE SATISFACTORY (Levels 2 or 3)**

Grade	Year	White	African Amer	Hispanic	Econ Disadv	Special Educ	LEP	At Risk	Migrant	Male	Female	All	District	Number Tested (All Students)
3	2012			44.4	44.4	*	44.4	44.4		50.0	*	44.4	51.7	9
	2013												32.5	0
	2014												35.8	0
4	2012												23.7	0
	2013			*	*		*	*		*		*	32.7	1
	2014												25.4	0
5	2012			*	*		*	*		*	*	*	0.0	3
	2013			*	*		*	*			*	*	23.3	1
	2014												39.7	0
3-5	2012			33.3	33.3	*	33.3	33.3		37.5	*	33.3	39.6	12
	2013			*	*		*	*		*	*	*	31.0	2
	2014												34.8	0

NUMBER TESTED IN GRADES 3-5													
2012			12	12	2	12	12			8	4	12	682
2013			2	2		2	2			1	1	2	523
2014													454

**PERCENTAGE SATISFACTORY (Levels 2 or 3)**

Grade	Year	White	African Amer	Hispanic	Econ Disadv	Special Educ	LEP	At Risk	Migrant	Male	Female	All	District	Number Tested (All Students)
6	2012			*	*		*	*		*		*	22.8	2
	2013			*	*		*	*		*	*	*	30.6	5
	2014			0.0	0.0		0.0	0.0		*	*	0.0	29.0	9
7	2012			0.0	*		0.0	*		*	*	0.0	16.9	6
	2013			28.6	33.3		28.6	*		*	*	28.6	24.3	7
	2014			12.5	12.5		12.5	12.5		*	*	12.5	24.8	8
8	2012			0.0	0.0		0.0	0.0		0.0	*	0.0	0.0	9
	2013			0.0	*		0.0	0.0		*	*	0.0	25.5	6
	2014			38.5	41.7		38.5	38.5		12.5	*	38.5	33.2	13
6-8	2012			5.9	6.7		5.9	10.0		7.7	*	5.9	12.7	17
	2013			16.7	18.8		16.7	15.4		0.0	27.3	16.7	26.8	18
	2014			20.0	20.7		20.0	20.0		6.3	35.7	20.0	29.1	30

NUMBER TESTED IN GRADES 6-8													
2012			17	15		17	10		13	4	17	620	
2013			18	16		18	13		7	11	18	634	
2014			30	29		30	30		16	14	30	722	

**NUMBER UNSATISFACTORY (Level 1)**

Grade	Year	White	African Amer	Hispanic	Econ Disadv	Special Educ	LEP	At Risk	Migrant	Male	Female	All	District	Number Tested (All Students)
3	2012			5	5	*	5	5		3	*	5	221	9
	2013												224	0
	2014												199	0
4	2012												106	0
	2013			*	*		*	*		*		*	68	1
	2014												53	0
5	2012			*	*		*	*		*	*	*	85	3
	2013			*	*		*	*			*	*	69	1
	2014												44	0
3-5	2012			8	8	*	8	8		5	*	8	412	12
	2013			*	*		*	*		*	*	*	361	2
	2014												296	0

NUMBER TESTED IN GRADES 3-5													
2012			12	12	2	12	12			8	4	12	682
2013			2	2		2	2			1	1	2	523
2014													454

**NUMBER UNSATISFACTORY (Level 1)**

Grade	Year	White	African Amer	Hispanic	Econ Disadv	Special Educ	LEP	At Risk	Migrant	Male	Female	All	District	Number Tested (All Students)
6	2012			*	*		*	*		*		*	146	2
	2013			*	*		*	*		*	*	*	150	5
	2014			9	9		9	9		*	*	9	171	9
7	2012			6	*		6	*		*	*	6	177	6
	2013			5	4		5	*		*	*	5	162	7
	2014			7	7		7	7		*	*	7	176	8
8	2012			9	8		9	6		6	*	9	218	9
	2013			6	*		6	6		*	*	6	152	6
	2014			8	7		8	8		7	*	8	165	13
6-8	2012			16	14		16	9		12	*	16	541	17
	2013			15	13		15	11		7	8	15	464	18
	2014			24	23		24	24		15	9	24	512	30

NUMBER TESTED IN GRADES 6-8													
2012			17	15		17	10		13	4	17	620	
2013			18	16		18	13		7	11	18	634	
2014			30	29		30	30		16	14	30	722	

PERCENTAGE ADVANCED (Level 3)

Grade	Year	White	African Amer	Hispanic	Econ Disadv	Special Educ	LEP	At Risk	Migrant	Male	Female	All	District	Number Tested (All Students)
3	2012			0.0	0.0	*	0.0	0.0		0.0	*	0.0	4.6	9
	2013												1.5	0
	2014												2.3	0
4	2012												1.4	0
	2013			*	*		*	*		*		*	2.0	1
	2014												0.0	0
5	2012			*	*		*	*		*	*	*	0.0	3
	2013			*	*		*	*			*	*	0.0	1
	2014												0.0	0
3-5	2012			0.0	0.0	*	0.0	0.0		0.0	*	0.0	3.4	12
	2013			*	*		*	*		*	*	*	1.3	2
	2014												1.5	0

NUMBER TESTED IN GRADE 3-5													
2012			12	12	2	12	12			8	4	12	682
2013			2	2		2	2			1	1	2	523
2014													454

PERCENTAGE ADVANCED (Level 3)

Grade	Year	White	African Amer	Hispanic	Econ Disadv	Special Educ	LEP	At Risk	Migrant	Male	Female	All	District	Number Tested (All Students)
6	2012			*	*		*	*		*		*	1.1	2
	2013			*	*		*	*		*	*	*	2.3	5
	2014			0.0	0.0		0.0	0.0		*	*	0.0	3.3	9
7	2012			0.0	*		0.0	*		*	*	0.0	0.0	6
	2013			0.0	0.0		0.0	*		*	*	0.0	0.9	7
	2014			0.0	0.0		0.0	0.0		*	*	0.0	0.0	8
8	2012			0.0	0.0		0.0	0.0		0.0	*	0.0	0.0	9
	2013			0.0	*		0.0	0.0		*	*	0.0	0.0	6
	2014			0.0	0.0		0.0	0.0		0.0	*	0.0	0.4	13
6-8	2012			0.0	0.0		0.0	0.0		0.0	*	0.0	0.3	17
	2013			0.0	0.0		0.0	0.0		0.0	0.0	0.0	1.1	18
	2014			0.0	0.0		0.0	0.0		0.0	0.0	0.0	1.2	30

NUMBER TESTED IN GRADE 6-8													
2012			17	15			17	10		13	4	17	620
2013			18	16			18	13		7	11	18	634
2014			30	29			30	30		16	14	30	722

**AVERAGE PERCENTAGE OF ITEMS CORRECT BY REPORTING CATEGORY**

Grade	Year	REPORTING CATEGORY				
		1. Numbers, Operations, and Quantitative Reasoning	2. Patterns, Relationships, and Algebraic Reasoning	3. Geometry and Spatial Reasoning	4. Measurement	5. Probability and Statistics
3	2012	52.6	44.4	64.2	59.7	38.9
	2013					
	2014					
4	2012					
	2013	*	*	*	*	*
	2014					
5	2012	*	*	*	*	*
	2013	*	*	*	*	*
	2014					
3-5	2012	49.6	41.7	58.9	52.1	38.3
	2013	*	*	*	*	*
	2014					



## AVERAGE PERCENTAGE OF ITEMS CORRECT BY REPORTING CATEGORY

Grade	Year	REPORTING CATEGORY				
		1. Numbers, Operations, and Quantitative Reasoning	2. Patterns, Relationships, and Algebraic Reasoning	3. Geometry and Spatial Reasoning	4. Measurement	5. Probability and Statistics
6	2012	*	*	*	*	*
	2013	*	*	*	*	*
	2014	27.8	21.3	25.0	36.1	20.8
7	2012	23.1	19.2	25.0	25.0	28.3
	2013	27.5	36.3	27.1	30.4	30.0
	2014	20.2	29.8	31.3	23.4	31.3
8	2012	31.3	30.2	22.2	33.3	32.2
	2013	30.3	19.0	27.1	26.9	25.0
	2014	37.8	39.0	27.9	39.6	27.7
6-8	2012	31.3	28.1	26.5	30.9	34.4
	2013	29.8	28.8	27.9	29.1	27.6
	2014	30.1	31.2	27.9	34.3	26.6

## PERCENTAGE SATISFACTORY (Levels 2 and 3)

Test	Year	White	African Amer	Hispanic	Econ Disadv	Special Educ	LEP	At Risk	Migrant	Male	Female	All	District
<b>ALGEBRA I</b>	<b>2012</b>			58.3	54.5	*	58.3	55.6		83.3	33.3	58.3	42.9
	<b>2013</b>			42.9	42.3		41.9	50.0		35.0	54.5	41.9	51.2
	<b>2014</b>			50.0	50.0		48.0	52.2		41.7	53.8	48.0	42.9
Tests Taken	<b>2012</b>			12	11	1	12	9		6	6	12	282
	<b>2013</b>			28	26		31	22		20	11	31	320
	<b>2014</b>			24	22		25	23		12	13	25	471

## NUMBER UNSATISFACTORY (Level 1)

Test	Year	White	African Amer	Hispanic	Econ Disadv	Special Educ	LEP	At Risk	Migrant	Male	Female	All	District
<b>ALGEBRA I</b>	<b>2012</b>			5	5	*	5	4		1	4	5	161
	<b>2013</b>			16	15		18	11		13	5	18	156
	<b>2014</b>			12	11		13	11		7	6	13	269
Tests Taken	<b>2012</b>			12	11	1	12	9		6	6	12	282
	<b>2013</b>			28	26		31	22		20	11	31	320
	<b>2014</b>			24	22		25	23		12	13	25	471

## PERCENTAGE ADVANCED (Level 3)

Test	Year	White	African Amer	Hispanic	Econ Disadv	Special Educ	LEP	At Risk	Migrant	Male	Female	All	District
<b>ALGEBRA I</b>	<b>2012</b>			0.0	0.0	*	0.0	0.0		0.0	0.0	0.0	2.5
	<b>2013</b>			0.0	3.8		3.2	0.0		5.0	0.0	3.2	4.1
	<b>2014</b>			4.2	4.5		4.0	4.3		0.0	7.7	4.0	2.3
Tests Taken	<b>2012</b>			12	11	1	12	9		6	6	12	282
	<b>2013</b>			28	26		31	22		20	11	31	320
	<b>2014</b>			24	22		25	23		12	13	25	471

## AVERAGE PERCENTAGE OF ITEMS CORRECT BY REPORTING CATEGORY

ALGEBRA I	1. Functional Relationships	2. Properties and Attributes of Functions	3. Linear Functions	4. Linear Equations and Inequalities	5. Quadratic and Other Nonlinear Functions
2012	54.2	45.1	42.8	44.2	46.3
2013	50.4	38.2	37.0	32.3	38.7
2014	50.0	43.3	39.2	32.0	37.8

**PERCENTAGE SATISFACTORY (Levels 2 or 3)**

Grade	Year	White	African Amer	Hispanic	Econ Disadv	Special Educ	LEP	At Risk	Migrant	Male	Female	All	District	Number Tested (All Students)
5	2012			*	*		*	*		*	*	*	17.0	3
	2013												20.3	
	2014												16.1	

NUMBER TESTED IN GRADE 5													
2012			3	3			3	3		2	1	3	88
2013													74
2014													56

**PERCENTAGE SATISFACTORY (Levels 2 or 3)**

Grade	Year	White	African Amer	Hispanic	Econ Disadv	Special Educ	LEP	At Risk	Migrant	Male	Female	All	District	Number Tested (All Students)
8	2012			20.0	25.0		20.0	33.3		16.7	*	20.0	14.2	10
	2013			0.0	0.0		0.0	0.0		*	*	0.0	13.3	9
	2014			16.7	18.2		16.7	16.7		14.3	*	16.7	17.0	12

NUMBER TESTED IN GRADE 8													
2012			10	8		10	6		6	4	10	226	
2013			8	7		9	6		4	5	9	210	
2014			12	11		12	12		7	5	12	277	

**NUMBER UNSATISFACTORY (Level 1)**

Grade	Year	White	African Amer	Hispanic	Econ Disadv	Special Educ	LEP	At Risk	Migrant	Male	Female	All	District	Number Tested (All Students)
5	2012			*	*		*	*		*	*	*	73	3
	2013												59	
	2014												47	

NUMBER TESTED IN GRADE 5													
2012			3	3		3	3			2	1	3	88
2013													74
2014													56



**NUMBER UNSATISFACTORY (Level 1)**

Grade	Year	White	African Amer	Hispanic	Econ Disadv	Special Educ	LEP	At Risk	Migrant	Male	Female	All	District	Number Tested (All Students)
8	2012			8	6		8	4		5	*	8	194	10
	2013			8	7		9	6		*	*	9	182	9
	2014			10	9		10	10		6	*	10	230	12

NUMBER TESTED IN GRADE 8													
2012			10	8		10	6		6	4	10	226	
2013			8	7		9	6		4	5	9	210	
2014			12	11		12	12		7	5	12	277	

**PERCENTAGE ADVANCED (Level 3)**

Grade	Year	White	African Amer	Hispanic	Econ Disadv	Special Educ	LEP	At Risk	Migrant	Male	Female	All	District	Number Tested (All Students)
5	2012			*	*		*	*		*	*	*	1.1	3
	2013												0.0	
	2014												0.0	

NUMBER TESTED IN GRADE 5													
2012			3	3		3	3			2	1	3	88
2013													74
2014													56

**PERCENTAGE ADVANCED (Level 3)**

Grade	Year	White	African Amer	Hispanic	Econ Disadv	Special Educ	LEP	At Risk	Migrant	Male	Female	All	District	Number Tested (All Students)
8	2012			0.0	0.0		0.0	0.0		0.0	*	0.0	0.0	10
	2013			0.0	0.0		0.0	0.0		*	*	0.0	0.0	9
	2014			0.0	0.0		0.0	0.0		0.0	*	0.0	0.0	12

NUMBER TESTED IN GRADE 8													
2012			10	8		10	6		6	4	10	226	
2013			8	7		9	6		4	5	9	210	
2014			12	11		12	12		7	5	12	277	

**AVERAGE PERCENTAGE OF ITEMS CORRECT BY REPORTING CATEGORY**

Grade	Year	REPORTING CATEGORY			
		1. Matter and Energy	2. Force, Motion, and Energy	3. Earth and Space	4. Organisms and Environments
5	2012	*	*	*	*
	2013				
	2014				
8	2012	40.7	50.0	34.3	39.3
	2013	26.2	37.0	38.1	31.7
	2014	35.7	41.7	50.6	39.9

## PERCENTAGE SATISFACTORY (Levels 2 and 3)

Test	Year	White	African Amer	Hispanic	Econ Disadv	Special Educ	LEP	At Risk	Migrant	Male	Female	All	District
<b>BIOLOGY</b>	<b>2012</b>			53.8	50.0	*	53.8	55.6		66.7	42.9	53.8	25.5
	<b>2013</b>			56.7	53.6		54.5	68.2		47.6	66.7	54.5	49.0
	<b>2014</b>			50.0	50.0		48.1	52.0		37.5	63.6	48.1	42.6
Tests Taken	<b>2012</b>			13	12	1	13	9		6	7	13	200
	<b>2013</b>			30	28		33	22		21	12	33	259
	<b>2014</b>			26	26		27	25		16	11	27	404

## NUMBER UNSATISFACTORY (Level 1)

Test	Year	White	African Amer	Hispanic	Econ Disadv	Special Educ	LEP	At Risk	Migrant	Male	Female	All	District
<b>BIOLOGY</b>	<b>2012</b>			6	6	*	6	4		2	4	6	149
	<b>2013</b>			13	13		15	7		11	4	15	132
	<b>2014</b>			13	13		14	12		10	4	14	232
Tests Taken	<b>2012</b>			13	12	1	13	9		6	7	13	200
	<b>2013</b>			30	28		33	22		21	12	33	259
	<b>2014</b>			26	26		27	25		16	11	27	404

## PERCENTAGE ADVANCED (Level 3)

Test	Year	White	African Amer	Hispanic	Econ Disadv	Special Educ	LEP	At Risk	Migrant	Male	Female	All	District
<b>BIOLOGY</b>	<b>2012</b>			0.0	0.0	*	0.0	0.0		0.0	0.0	0.0	0.0
	<b>2013</b>			0.0	0.0		0.0	0.0		0.0	0.0	0.0	0.0
	<b>2014</b>			0.0	0.0		0.0	0.0		0.0	0.0	0.0	0.2
Tests Taken	<b>2012</b>			13	12	1	13	9		6	7	13	200
	<b>2013</b>			30	28		33	22		21	12	33	259
	<b>2014</b>			26	26		27	25		16	11	27	404

## AVERAGE PERCENTAGE OF ITEMS CORRECT BY REPORTING CATEGORY

<b>BIOLOGY</b>	1. Cell Structure and Function	2. Mechanisms of Genetics	3. Biological Evolution and Classification	4. Biological Processes and Systems	5. Interdependence within Environmental Systems
<b>2012</b>	43.4	36.4	46.9	42.0	21.7
<b>2013</b>	37.5	35.5	41.5	38.8	38.0
<b>2014</b>	36.4	46.5	41.5	33.3	39.4



## PERCENTAGE SATISFACTORY (Levels 2 or 3)

Grade	Year	White	African Amer	Hispanic	Econ Disadv	Special Educ	LEP	At Risk	Migrant	Male	Female	All	District	Number Tested (All Students)
8	2012			20.0	25.0		20.0	33.3		16.7	*	20.0	11.1	10
	2013			0.0	0.0		0.0	0.0		*	*	0.0	18.6	9
	2014			16.7	18.2		16.7	16.7		14.3	*	16.7	11.0	12

NUMBER TESTED IN GRADE 8													
2012			10	8		10	6		6	4	10	226	
2013			8	7		9	6		4	5	9	204	
2014			12	11		12	12		7	5	12	272	

**NUMBER UNSATISFACTORY (Level 1)**

Grade	Year	White	African Amer	Hispanic	Econ Disadv	Special Educ	LEP	At Risk	Migrant	Male	Female	All	District	Number Tested (All Students)
8	2012			8	6		8	4		5	*	8	201	10
	2013			8	7		9	6		*	*	9	166	9
	2014			10	9		10	10		6	*	10	242	12

NUMBER TESTED IN GRADE8													
2012			10	8		10	6		6	4	10	226	
2013			8	7		9	6		4	5	9	204	
2014			12	11		12	12		7	5	12	272	

**PERCENTAGE ADVANCED (Level 3)**

Grade	Year	White	African Amer	Hispanic	Econ Disadv	Special Educ	LEP	At Risk	Migrant	Male	Female	All	District	Number Tested (All Students)
8	2012			0.0	0.0		0.0	0.0		0.0	*	0.0	0.0	10
	2013			0.0	0.0		0.0	0.0		*	*	0.0	1.0	9
	2014			0.0	0.0		0.0	0.0		0.0	*	0.0	0.4	12

NUMBER TESTED IN GRADE 8													
2012			10	8		10	6		6	4	10	226	
2013			8	7		9	6		4	5	9	204	
2014			12	11		12	12		7	5	12	272	

## AVERAGE PERCENTAGE OF ITEMS CORRECT BY REPORTING CATEGORY

Grade	Year	REPORTING CATEGORY			
		1. History	2. Geography and Culture	3. Government and Citizenship	4. Economics, Science, Technology, and Society
8	2012	34.5	41.7	33.3	41.3
	2013	28.9	27.8	26.9	30.6
	2014	30.8	34.7	37.5	28.1

## PERCENTAGE SATISFACTORY (Levels 2 and 3)

Test	Year	White	African Amer	Hispanic	Econ Disadv	Special Educ	LEP	At Risk	Migrant	Male	Female	All	District
U.S. HISTORY	2012												
	2013												
	2014			71.4	83.3		71.4	71.4		*	*	71.4	47.4
Tests Taken	2012												
	2013												
	2014			7	6		7	7		3	4	7	38

## NUMBER UNSATISFACTORY (Level 1)

Test	Year	White	African Amer	Hispanic	Econ Disadv	Special Educ	LEP	At Risk	Migrant	Male	Female	All	District
U.S. HISTORY	2012												
	2013												
	2014			2	1		2	2		*	*	2	20
Tests Taken	2012												
	2013												
	2014			7	6		7	7		3	4	7	38

## PERCENTAGE ADVANCED (Level 3)

Test	Year	White	African Amer	Hispanic	Econ Disadv	Special Educ	LEP	At Risk	Migrant	Male	Female	All	District
U.S. HISTORY	2012												
	2013												
	2014			0.0	0.0		0.0	0.0		*	*	0.0	2.6
Tests Taken	2012												
	2013												
	2014			7	6		7	7		3	4	7	38

## AVERAGE PERCENTAGE OF ITEMS CORRECT BY REPORTING CATEGORY

U.S. HISTORY	1. History	2. Geography and Culture	3. Government and Citizenship	4. Economics, Science, Technology, and Society
2012				
2013				
2014	59.5	47.6	47.1	45.5



**PERCENTAGE SATISFACTORY (Levels 2 or 3)**

Grade	Year	White	African Amer	Hispanic	Econ Disadv	Special Educ	LEP	At Risk	Migrant	Male	Female	All	District	Number Tested (All Students)
3	2012			25.0	40.0	40.0	*	25.0		42.9	*	40.0	54.7	10
	2013			54.5	54.5	54.5	*	50.0		66.7	*	54.5	67.5	11
	2014			*	*	*	*	*		*	*	*	63.3	5
4	2012			33.3	33.3	33.3	28.6	28.6		*	*	33.3	58.0	9
	2013			37.5	37.5	37.5	*	28.6		*	*	37.5	60.2	8
	2014			40.0	40.0	40.0	50.0	40.0		50.0	*	40.0	62.9	10
5	2012		*	66.7	57.1	57.1	*	66.7		*	*	57.1	67.0	7
	2013			84.6	84.6	84.6	75.0	77.8		85.7	83.3	84.6	86.5	13
	2014			75.0	71.4	75.0	*	71.4		*	*	75.0	86.3	8
3-5	2012		*	39.1	42.3	42.3	20.0	38.1		46.7	36.4	42.3	61.0	26
	2013			62.5	62.5	62.5	47.1	53.8		58.8	66.7	62.5	73.4	32
	2014			52.2	47.6	52.2	42.9	47.6		42.9	66.7	52.2	73.2	23

NUMBER TESTED IN GRADES 3-5													
2012		1	23	26	26	15	21		15	11	26	1,384	
2013			32	32	32	17	26		17	15	32	1,434	
2014			23	21	23	14	21		14	9	23	1,362	

**PERCENTAGE SATISFACTORY (Levels 2 or 3)**

Grade	Year	White	African Amer	Hispanic	Econ Disadv	Special Educ	LEP	At Risk	Migrant	Male	Female	All	District	Number Tested (All Students)
6	2012		*	75.0	72.2	73.7	72.7	75.0		76.9	66.7	73.7	65.5	19
	2013		*	83.3	85.7	85.7	*	85.7		*	*	85.7	55.9	7
	2014	*	*	20.0	33.3	33.3	0.0	27.3		28.6	*	33.3	51.6	12
7	2012			26.7	30.8	26.7	11.1	28.6		33.3	*	26.7	57.3	15
	2013		*	53.8	50.0	53.3	50.0	53.8		50.0	*	53.3	61.0	15
	2014		*	42.9	50.0	50.0	*	42.9		50.0	*	50.0	55.4	8
8	2012		*	50.0	40.0	40.0	*	40.0		44.4	*	40.0	58.0	10
	2013			83.3	81.8	83.3	75.0	83.3		80.0	*	83.3	74.5	12
	2014		*	100.0	90.0	90.0	*	90.0		88.9	*	90.0	75.0	10
6-8	2012		*	51.3	51.2	50.0	52.0	50.0		52.9	40.0	50.0	60.3	44
	2013		*	71.0	68.8	70.6	63.2	71.9		72.0	66.7	70.6	63.6	34
	2014	*	*	53.8	56.7	56.7	40.0	53.6		59.1	50.0	56.7	60.0	30

NUMBER TESTED IN GRADES 6-8													
2012		4	39	41	44	25	40		34	10	44	1,571	
2013		3	31	32	34	19	32		25	9	34	1,687	
2014	1	3	26	30	30	15	28		22	8	30	1,689	

**NUMBER UNSATISFACTORY (Level 1)**

Grade	Year	White	African Amer	Hispanic	Econ Disadv	Special Educ	LEP	At Risk	Migrant	Male	Female	All	District	Number Tested (All Students)
3	2012			6	6	6	*	6		4	*	6	149	10
	2013			5	5	5	*	5		2	*	5	114	11
	2014			*	*	*	*	*		*	*	*	114	5
4	2012			6	6	6	5	5		*	*	6	201	9
	2013			5	5	5	*	5		*	*	5	184	8
	2014			6	6	6	3	6		3	*	6	170	10
5	2012		*	2	3	3	*	2		*	*	3	190	7
	2013			2	2	2	2	2		1	1	2	84	13
	2014			2	2	2	*	2		*	*	2	81	8
3-5	2012		*	14	15	15	12	13		8	7	15	540	26
	2013			12	12	12	9	12		7	5	12	382	32
	2014			11	11	11	8	11		8	3	11	365	23

NUMBER TESTED IN GRADES 3-5													
2012		1	23	26	26	15	21		15	11	26	1,384	
2013			32	32	32	17	26		17	15	32	1,434	
2014			23	21	23	14	21		14	9	23	1,362	

**NUMBER UNSATISFACTORY (Level 1)**

Grade	Year	White	African Amer	Hispanic	Econ Disadv	Special Educ	LEP	At Risk	Migrant	Male	Female	All	District	Number Tested (All Students)
6	2012		*	4	5	5	3	4		3	2	5	181	19
	2013		*	1	1	1	*	1		*	*	1	270	7
	2014	*	*	8	8	8	7	8		5	*	8	281	12
7	2012			11	9	11	8	10		8	*	11	244	15
	2013		*	6	7	7	4	6		5	*	7	202	15
	2014		*	4	4	4	*	4		3	*	4	266	8
8	2012		*	4	6	6	*	6		5	*	6	199	10
	2013			2	2	2	2	2		2	*	2	142	12
	2014		*	0	1	1	*	1		1	*	1	128	10
6-8	2012		*	19	20	22	12	20		16	6	22	624	44
	2013		*	9	10	10	7	9		7	3	10	614	34
	2014	*	*	12	13	13	9	13		9	4	13	675	30

NUMBER TESTED IN GRADES 6-8													
2012		4	39	41	44	25	40		34	10	44	1,571	
2013		3	31	32	34	19	32		25	9	34	1,687	
2014	1	3	26	30	30	15	28		22	8	30	1,689	

PERCENTAGE ADVANCED (Level 3)

Grade	Year	White	African Amer	Hispanic	Econ Disadv	Special Educ	LEP	At Risk	Migrant	Male	Female	All	District	Number Tested (All Students)
3	2012			0.0	0.0	0.0	*	0.0		0.0	*	0.0	3.3	10
	2013			0.0	0.0	0.0	*	0.0		0.0	*	0.0	4.3	11
	2014			*	*	*	*	*		*	*	*	4.8	5
4	2012			0.0	0.0	0.0	0.0	0.0		*	*	0.0	3.3	9
	2013			0.0	0.0	0.0	*	0.0		*	*	0.0	3.5	8
	2014			0.0	0.0	0.0	0.0	0.0		0.0	*	0.0	6.3	10
5	2012		*	0.0	0.0	0.0	*	0.0		*	*	0.0	4.9	7
	2013			7.7	7.7	7.7	0.0	11.1		14.3	0.0	7.7	7.4	13
	2014			0.0	0.0	0.0	*	0.0		*	*	0.0	10.3	8
3-5	2012		*	0.0	0.0	0.0	0.0	0.0		0.0	0.0	0.0	4.0	26
	2013			3.1	3.1	3.1	0.0	3.8		5.9	0.0	3.1	5.4	32
	2014			0.0	0.0	0.0	0.0	0.0		0.0	0.0	0.0	7.7	23

NUMBER TESTED IN GRADE 3-5													
2012		1	23	26	26	15	21		15	11	26	1,384	
2013			32	32	32	17	26		17	15	32	1,434	
2014			23	21	23	14	21		14	9	23	1,362	

**PERCENTAGE ADVANCED (Level 3)**

Grade	Year	White	African Amer	Hispanic	Econ Disadv	Special Educ	LEP	At Risk	Migrant	Male	Female	All	District	Number Tested (All Students)
6	2012		*	0.0	0.0	0.0	0.0	0.0		0.0	0.0	0.0	3.6	19
	2013		*	0.0	14.3	14.3	*	14.3		*	*	14.3	3.1	7
	2014	*	*	0.0	0.0	0.0	0.0	0.0		0.0	*	0.0	2.9	12
7	2012			0.0	0.0	0.0	0.0	0.0		0.0	*	0.0	1.0	15
	2013		*	0.0	0.0	0.0	0.0	0.0		0.0	*	0.0	3.5	15
	2014		*	0.0	0.0	0.0	*	0.0		0.0	*	0.0	3.9	8
8	2012		*	0.0	0.0	0.0	*	0.0		0.0	*	0.0	1.1	10
	2013			0.0	0.0	0.0	0.0	0.0		0.0	*	0.0	2.5	12
	2014		*	0.0	0.0	0.0	*	0.0		0.0	*	0.0	2.9	10
6-8	2012		*	0.0	0.0	0.0	0.0	0.0		0.0	0.0	0.0	1.9	44
	2013		*	0.0	3.1	2.9	0.0	3.1		4.0	0.0	2.9	3.0	34
	2014	*	*	0.0	0.0	0.0	0.0	0.0		0.0	0.0	0.0	3.3	30

NUMBER TESTED IN GRADE 6-8													
2012		4	39	41	44	25	40		34	10	44	1,571	
2013		3	31	32	34	19	32		25	9	34	1,687	
2014	1	3	26	30	30	15	28		22	8	30	1,689	

## AVERAGE PERCENTAGE OF ITEMS CORRECT BY REPORTING CATEGORY

Grade	Year	REPORTING CATEGORY		
		1. Understanding Across Genres (GR 3-5) 1. Understanding/Analysis Across Genres (GR 6-8)	2. Understanding/Analysis of Literary Texts	3. Understanding/Analysis of Informational Texts
3	2012	42.0	47.9	38.5
	2013	38.2	55.2	44.1
	2014	*	*	*
4	2012	30.6	51.6	43.6
	2013	46.9	47.3	43.3
	2014	43.8	50.0	46.9
5	2012	41.1	33.3	45.9
	2013	52.9	53.8	61.5
	2014	65.6	52.5	58.9
3-5	2012	37.8	45.2	42.2
	2013	46.3	52.7	51.0
	2014	47.9	52.1	49.6

## AVERAGE PERCENTAGE OF ITEMS CORRECT BY REPORTING CATEGORY

Grade	Year	REPORTING CATEGORY		
		1. Understanding Across Genres (GR 3-5) 1. Understanding/Analysis Across Genres (GR 6-8)	2. Understanding/Analysis of Literary Texts	3. Understanding/Analysis of Informational Texts
6	2012	43.4	60.9	48.1
	2013	67.9	67.0	58.2
	2014	34.4	42.2	40.5
7	2012	33.3	37.3	38.7
	2013	63.3	51.8	42.2
	2014	43.8	49.3	45.0
8	2012	53.8	50.6	47.5
	2013	76.0	54.2	59.9
	2014	76.3	59.4	49.4
6-8	2012	42.3	50.5	44.8
	2013	68.8	55.7	51.7
	2014	50.8	49.8	44.6



## PERCENTAGE SATISFACTORY (Levels 2 and 3)

Test	Year	White	African Amer	Hispanic	Econ Disadv	Special Educ	LEP	At Risk	Migrant	Male	Female	All	District
ENGLISH I	2012												
	2013												
	2014			0.0	0.0	0.0	*	0.0		*	*	0.0	50.6
Tests Taken	2012												
	2013												
	2014			7	6	7	5	7		5	2	7	405
ENGLISH II	2012												
	2013												
	2014		*	50.0	42.9	42.9	*	42.9		*	*	42.9	65.3
Tests Taken	2012												
	2013												
	2014		1	6	7	7	4	7		5	2	7	340

## NUMBER UNSATISFACTORY (Level 1)

Test	Year	White	African Amer	Hispanic	Econ Disadv	Special Educ	LEP	At Risk	Migrant	Male	Female	All	District
ENGLISH I	2012												
	2013												
	2014			7	6	7	*	7		*	*	7	200
Tests Taken	2012												
	2013												
	2014			7	6	7	5	7		5	2	7	405
ENGLISH II	2012												
	2013												
	2014		*	3	4	4	*	4		*	*	4	118
Tests Taken	2012												
	2013												
	2014		1	6	7	7	4	7		5	2	7	340

## PERCENTAGE ADVANCED (Level 3)

Test	Year	White	African Amer	Hispanic	Econ Disadv	Special Educ	LEP	At Risk	Migrant	Male	Female	All	District
ENGLISH I	2012												
	2013												
	2014			0.0	0.0	0.0	*	0.0		*	*	0.0	3.5
Tests Taken	2012												
	2013												
	2014			7	6	7	5	7		5	2	7	405
ENGLISH II	2012												
	2013												
	2014		*	0.0	0.0	0.0	*	0.0		*	*	0.0	12.6
Tests Taken	2012												
	2013												
	2014		1	6	7	7	4	7		5	2	7	340

## AVERAGE PERCENTAGE OF ITEMS CORRECT BY REPORTING CATEGORY

ENGLISH I	1. Understanding & Analysis Across Genres	2. Understanding & Analysis of Literary Texts	3. Understanding & Analysis of Informational Texts	4. Literary Composition <sup>1</sup>	5. Revision	6. Editing
2012						
2013						
2014	42.9	23.8	36.5	1.7	28.6	49.2

ENGLISH II	1. Understanding & Analysis Across Genres	2. Understanding & Analysis of Literary Texts	3. Understanding & Analysis of Informational Texts	4. Expository Composition <sup>1</sup>	5. Revision	6. Editing
2012						
2013						
2014	39.3	44.4	49.2	2.4	36.5	44.4

<sup>1</sup>Average score points (range 0-6). A STAAR M composition is rated twice on a scale of 0 to 3, and the ratings are summed to determine score points for the composition. Score point scale: 0=Non-scorable; 2=Very Limited; 3=between Very Limited and Basic; 4=Basic; 5=between Basic and Satisfactory; 6=Satisfactory

**PERCENTAGE SATISFACTORY (Levels 2 or 3)**

Grade	Year	White	African Amer	Hispanic	Econ Disadv	Special Educ	LEP	At Risk	Migrant	Male	Female	All	District	Number Tested (All Students)
4	2012			36.4	36.4	36.4	25.0	33.3		33.3	*	36.4	57.5	11
	2013			50.0	50.0	50.0	*	42.9		*	*	50.0	48.9	8
	2014			11.1	11.1	11.1	*	11.1		0.0	*	11.1	47.7	9

NUMBER TESTED IN GRADE 4													
2012			11	11	11	8	9		6	5	11	475	
2013			8	8	8	4	7		4	4	8	452	
2014			9	9	9	5	9		6	3	9	449	

**PERCENTAGE SATISFACTORY (Levels 2 or 3)**

Grade	Year	White	African Amer	Hispanic	Econ Disadv	Special Educ	LEP	At Risk	Migrant	Male	Female	All	District	Number Tested (All Students)
7	2012			37.5	35.7	37.5	33.3	33.3		38.5	*	37.5	56.7	16
	2013		*	85.7	86.7	87.5	87.5	85.7		81.8	*	87.5	63.7	16
	2014		*	42.9	50.0	50.0	*	42.9		50.0	*	50.0	62.9	8

NUMBER TESTED IN GRADE 7													
2012			16	14	16	9	15		13	3	16	586	
2013		2	14	15	16	8	14		11	5	16	509	
2014		1	7	8	8	4	7		6	2	8	599	

## NUMBER UNSATISFACTORY (Level 1)

Grade	Year	White	African Amer	Hispanic	Econ Disadv	Special Educ	LEP	At Risk	Migrant	Male	Female	All	District	Number Tested (All Students)
4	2012			7	7	7	6	6		4	*	7	202	11
	2013			4	4	4	*	4		*	*	4	231	8
	2014			8	8	8	*	8		6	*	8	235	9

NUMBER TESTED IN GRADE 4													
2012			11	11	11	8	9		6	5	11	475	
2013			8	8	8	4	7		4	4	8	452	
2014			9	9	9	5	9		6	3	9	449	

**NUMBER UNSATISFACTORY (Level 1)**

Grade	Year	White	African Amer	Hispanic	Econ Disadv	Special Educ	LEP	At Risk	Migrant	Male	Female	All	District	Number Tested (All Students)
7	2012			10	9	10	6	10		8	*	10	254	16
	2013		*	2	2	2	1	2		2	*	2	185	16
	2014		*	4	4	4	*	4		3	*	4	222	8

NUMBER TESTED IN GRADE 7													
2012			16	14	16	9	15		13	3	16	586	
2013		2	14	15	16	8	14		11	5	16	509	
2014		1	7	8	8	4	7		6	2	8	599	



**PERCENTAGE ADVANCED (Level 3)**

Grade	Year	White	African Amer	Hispanic	Econ Disadv	Special Educ	LEP	At Risk	Migrant	Male	Female	All	District	Number Tested (All Students)
4	2012			0.0	0.0	0.0	0.0	0.0		0.0	*	0.0	5.3	11
	2013			0.0	0.0	0.0	*	0.0		*	*	0.0	8.6	8
	2014			0.0	0.0	0.0	*	0.0		0.0	*	0.0	8.5	9

NUMBER TESTED IN GRADE 4													
2012			11	11	11	8	9		6	5	11	475	
2013			8	8	8	4	7		4	4	8	452	
2014			9	9	9	5	9		6	3	9	449	

**PERCENTAGE ADVANCED (Level 3)**

Grade	Year	White	African Amer	Hispanic	Econ Disadv	Special Educ	LEP	At Risk	Migrant	Male	Female	All	District	Number Tested (All Students)
7	2012			0.0	0.0	0.0	0.0	0.0		0.0	*	0.0	2.7	16
	2013		*	0.0	0.0	0.0	0.0	0.0		0.0	*	0.0	6.3	16
	2014		*	0.0	12.5	12.5	*	0.0		16.7	*	12.5	6.3	8

NUMBER TESTED IN GRADE 7													
2012			16	14	16	9	15			13	3	16	586
2013		2	14	15	16	8	14			11	5	16	509
2014		1	7	8	8	4	7			6	2	8	599

**AVERAGE PERCENTAGE OF ITEMS CORRECT BY REPORTING CATEGORY**

Grade	Year	REPORTING CATEGORY		
		1. Composition <sup>1</sup> GR 4: Personal Narrative GR 7: Expository	2. Revision	3. Editing
4	2012	1.0	36.4	39.4
	2013	2.1	32.1	50.0
	2014	1.6	33.3	35.6
7	2012	0.6	30.3	36.2
	2013	2.4	56.3	57.9
	2014	2.4	47.1	48.0

<sup>1</sup>Average score points (range 0-6). A STAAR M composition is rated twice on a scale of 0 to 3, and the ratings are summed to determine score points for the composition. Score point scale: 0=Non-scorable; 2=Very Limited; 3=between Very Limited and Basic; 4=Basic; 5=between Basic and Satisfactory; 6=Satisfactory

**PERCENTAGE SATISFACTORY (Levels 2 or 3)**

Grade	Year	White	African Amer	Hispanic	Econ Disadv	Special Educ	LEP	At Risk	Migrant	Male	Female	All	District	Number Tested (All Students)
3	2012			37.5	40.0	40.0	*	37.5		42.9	*	40.0	52.0	10
	2013			27.3	27.3	27.3	33.3	30.0		*	16.7	27.3	64.4	11
	2014			*	*	*	*	*		*	*	*	64.2	5
4	2012			50.0	50.0	50.0	37.5	44.4		*	*	50.0	61.2	10
	2013			62.5	62.5	62.5	*	57.1		*	*	62.5	61.7	8
	2014			90.0	90.0	90.0	100.0	90.0		*	*	90.0	70.3	10
5	2012		*	50.0	57.1	57.1	*	50.0		*	*	57.1	60.6	7
	2013			66.7	66.7	66.7	62.5	75.0		66.7	66.7	66.7	77.2	12
	2014			66.7	57.1	66.7	*	62.5		*	*	66.7	79.1	9
3-5	2012		*	45.8	48.1	48.1	31.3	43.5		46.7	50.0	48.1	58.7	27
	2013			51.6	51.6	51.6	50.0	52.0		53.3	50.0	51.6	69.1	31
	2014			75.0	72.7	75.0	75.0	73.9		64.3	90.0	75.0	72.7	24

NUMBER TESTED IN GRADES 3-5													
2012		1	24	27	27	16	23		15	12	27	1,354	
2013			31	31	31	18	25		15	16	31	1,433	
2014			24	22	24	16	23		14	10	24	1,378	

**PERCENTAGE SATISFACTORY (Levels 2 or 3)**

Grade	Year	White	African Amer	Hispanic	Econ Disadv	Special Educ	LEP	At Risk	Migrant	Male	Female	All	District	Number Tested (All Students)
6	2012		*	13.3	22.2	21.1	10.0	18.8		16.7	28.6	21.1	46.2	19
	2013		*	85.7	87.5	87.5	*	87.5		*	*	87.5	54.3	8
	2014			33.3	33.3	33.3	14.3	25.0		33.3	*	33.3	52.0	9
7	2012			42.9	41.7	42.9	28.6	38.5		45.5	*	42.9	50.5	14
	2013		*	33.3	37.5	35.3	33.3	33.3		36.4	33.3	35.3	49.4	17
	2014		*	*	33.3	33.3	*	*		*	*	33.3	48.8	6
8	2012		*	44.4	36.4	36.4	50.0	36.4		40.0	*	36.4	46.2	11
	2013			90.9	90.0	90.9	85.7	90.9		88.9	*	90.9	71.4	11
	2014		*	90.0	81.8	81.8	*	81.8		77.8	*	81.8	71.0	11
6-8	2012		*	31.6	31.7	31.8	26.1	30.0		33.3	27.3	31.8	47.7	44
	2013		*	63.6	64.7	63.9	57.9	64.7		68.0	54.5	63.9	58.5	36
	2014		*	58.3	53.8	53.8	53.3	54.2		55.0	50.0	53.8	56.7	26

NUMBER TESTED IN GRADES 6-8													
2012		5	38	41	44	23	40		33	11	44	1,554	
2013		3	33	34	36	19	34		25	11	36	1,659	
2014		2	24	26	26	15	24		20	6	26	1,684	

**NUMBER UNSATISFACTORY (Level 1)**

Grade	Year	White	African Amer	Hispanic	Econ Disadv	Special Educ	LEP	At Risk	Migrant	Male	Female	All	District	Number Tested (All Students)
3	2012			5	6	6	*	5		4	*	6	157	10
	2013			8	8	8	4	7		*	5	8	120	11
	2014			*	*	*	*	*		*	*	*	113	5
4	2012			5	5	5	5	5		*	*	5	182	10
	2013			3	3	3	*	3		*	*	3	181	8
	2014			1	1	1	0	1		*	*	1	138	10
5	2012		*	3	3	3	*	3		*	*	3	220	7
	2013			4	4	4	3	2		2	2	4	142	12
	2014			3	3	3	*	3		*	*	3	125	9
3-5	2012		*	13	14	14	11	13		8	6	14	559	27
	2013			15	15	15	9	12		7	8	15	443	31
	2014			6	6	6	4	6		5	1	6	376	24

NUMBER TESTED IN GRADES 3-5													
2012		1	24	27	27	16	23		15	12	27	1,354	
2013			31	31	31	18	25		15	16	31	1,433	
2014			24	22	24	16	23		14	10	24	1,378	

**NUMBER UNSATISFACTORY (Level 1)**

Grade	Year	White	African Amer	Hispanic	Econ Disadv	Special Educ	LEP	At Risk	Migrant	Male	Female	All	District	Number Tested (All Students)
6	2012		*	13	14	15	9	13		10	5	15	276	19
	2013		*	1	1	1	*	1		*	*	1	272	8
	2014			6	6	6	6	6		4	*	6	271	9
7	2012			8	7	8	5	8		6	*	8	276	14
	2013		*	10	10	11	6	10		7	4	11	257	17
	2014		*	*	4	4	*	*		*	*	4	310	6
8	2012		*	5	7	7	3	7		6	*	7	260	11
	2013			1	1	1	1	1		1	*	1	159	11
	2014		*	1	2	2	*	2		2	*	2	149	11
6-8	2012		*	26	28	30	17	28		22	8	30	812	44
	2013		*	12	12	13	8	12		8	5	13	688	36
	2014		*	10	12	12	7	11		9	3	12	730	26

NUMBER TESTED IN GRADES 6-8													
2012		5	38	41	44	23	40		33	11	44	1,554	
2013		3	33	34	36	19	34		25	11	36	1,659	
2014		2	24	26	26	15	24		20	6	26	1,684	

PERCENTAGE ADVANCED (Level 3)

Grade	Year	White	African Amer	Hispanic	Econ Disadv	Special Educ	LEP	At Risk	Migrant	Male	Female	All	District	Number Tested (All Students)
3	2012			0.0	0.0	0.0	*	0.0		0.0	*	0.0	4.0	10
	2013			0.0	0.0	0.0	0.0	0.0		*	0.0	0.0	7.4	11
	2014			*	*	*	*	*		*	*	*	7.6	5
4	2012			0.0	0.0	0.0	0.0	0.0		*	*	0.0	1.7	10
	2013			0.0	0.0	0.0	*	0.0		*	*	0.0	4.7	8
	2014			10.0	10.0	10.0	16.7	10.0		*	*	10.0	6.5	10
5	2012		*	0.0	0.0	0.0	*	0.0		*	*	0.0	0.7	7
	2013			0.0	0.0	0.0	0.0	0.0		0.0	0.0	0.0	3.9	12
	2014			11.1	0.0	11.1	*	12.5		*	*	11.1	6.0	9
3-5	2012		*	0.0	0.0	0.0	0.0	0.0		0.0	0.0	0.0	1.8	27
	2013			0.0	0.0	0.0	0.0	0.0		0.0	0.0	0.0	5.0	31
	2014			8.3	4.5	8.3	12.5	8.7		14.3	0.0	8.3	6.5	24

NUMBER TESTED IN GRADE 3-5													
2012		1	24	27	27	16	23		15	12	27	1,354	
2013			31	31	31	18	25		15	16	31	1,433	
2014			24	22	24	16	23		14	10	24	1,378	



PERCENTAGE ADVANCED (Level 3)

Grade	Year	White	African Amer	Hispanic	Econ Disadv	Special Educ	LEP	At Risk	Migrant	Male	Female	All	District	Number Tested (All Students)
6	2012		*	0.0	0.0	0.0	0.0	0.0		0.0	0.0	0.0	5.5	19
	2013		*	28.6	25.0	25.0	*	25.0		*	*	25.0	4.9	8
	2014			0.0	0.0	0.0	0.0	0.0		0.0	*	0.0	3.4	9
7	2012			0.0	0.0	0.0	0.0	0.0		0.0	*	0.0	1.1	14
	2013		*	0.0	0.0	0.0	0.0	0.0		0.0	0.0	0.0	3.0	17
	2014		*	*	0.0	0.0	*	*		*	*	0.0	2.3	6
8	2012		*	0.0	0.0	0.0	0.0	0.0		0.0	*	0.0	1.2	11
	2013			0.0	0.0	0.0	0.0	0.0		0.0	*	0.0	2.2	11
	2014		*	0.0	0.0	0.0	*	0.0		0.0	*	0.0	1.9	11
6-8	2012		*	0.0	0.0	0.0	0.0	0.0		0.0	0.0	0.0	2.6	44
	2013		*	6.1	5.9	5.6	5.3	5.9		4.0	9.1	5.6	3.4	36
	2014		*	0.0	0.0	0.0	0.0	0.0		0.0	0.0	0.0	2.6	26

NUMBER TESTED IN GRADE 6-8													
2012		5	38	41	44	23	40		33	11	44	1,554	
2013		3	33	34	36	19	34		25	11	36	1,659	
2014		2	24	26	26	15	24		20	6	26	1,684	

## AVERAGE PERCENTAGE OF ITEMS CORRECT BY REPORTING CATEGORY

Grade	Year	REPORTING CATEGORY				
		1. Numbers, Operations, and Quantitative Reasoning	2. Patterns, Relationships, and Algebraic Reasoning	3. Geometry and Spatial Reasoning	4. Measurement	5. Probability and Statistics
3	2012	48.5	61.7	45.7	43.3	38.0
	2013	49.7	39.4	57.1	33.3	43.6
	2014	*	*	*	*	*
4	2012	46.9	56.0	38.0	45.0	30.0
	2013	58.7	57.5	50.0	39.6	34.4
	2014	63.1	70.0	56.0	63.3	72.5
5	2012	43.9	40.0	31.0	54.8	46.0
	2013	52.4	48.3	38.9	50.0	43.5
	2014	59.5	53.3	42.6	50.0	65.4
3-5	2012	46.7	54.0	39.0	46.9	37.1
	2013	53.0	47.5	48.2	41.4	41.2
	2014	58.9	58.9	54.2	55.6	68.1

## AVERAGE PERCENTAGE OF ITEMS CORRECT BY REPORTING CATEGORY

Grade	Year	REPORTING CATEGORY				
		1. Numbers, Operations, and Quantitative Reasoning	2. Patterns, Relationships, and Algebraic Reasoning	3. Geometry and Spatial Reasoning	4. Measurement	5. Probability and Statistics
6	2012	38.3	32.6	39.5	21.9	36.8
	2013	71.4	55.0	70.8	66.7	66.7
	2014	48.4	35.6	48.1	35.2	38.9
7	2012	35.7	30.0	35.7	27.4	37.5
	2013	39.6	40.6	43.4	36.3	39.7
	2014	42.4	38.3	43.8	27.8	45.8
8	2012	30.9	43.0	34.8	33.6	33.0
	2013	55.5	56.2	53.0	52.7	53.4
	2014	39.1	51.2	47.0	48.2	51.1
6-8	2012	35.6	34.4	37.1	26.6	36.1
	2013	51.5	48.6	52.4	48.1	49.9
	2014	43.1	42.8	46.6	39.0	45.7

## PERCENTAGE SATISFACTORY (Levels 2 and 3)

Test	Year	White	African Amer	Hispanic	Econ Disadv	Special Educ	LEP	At Risk	Migrant	Male	Female	All	District
ALGEBRA I	2012			*	*	*	*	*		*		*	32.5
	2013		*	0.0	0.0	0.0	*	0.0		0.0	*	0.0	36.9
	2014			50.0	*	50.0	*	50.0		*	*	50.0	46.1
Tests Taken	2012			3	3	3	1	3		3		3	280
	2013		2	6	8	8	3	8		6	2	8	339
	2014			6	5	6	4	6		4	2	6	360

## NUMBER UNSATISFACTORY (Level 1)

Test	Year	White	African Amer	Hispanic	Econ Disadv	Special Educ	LEP	At Risk	Migrant	Male	Female	All	District
ALGEBRA I	2012			*	*	*	*	*		*		*	189
	2013		*	6	8	8	*	8		6	*	8	214
	2014			3	*	3	*	3		*	*	3	194
Tests Taken	2012			3	3	3	1	3		3		3	280
	2013		2	6	8	8	3	8		6	2	8	339
	2014			6	5	6	4	6		4	2	6	360

## PERCENTAGE ADVANCED (Level 3)

Test	Year	White	African Amer	Hispanic	Econ Disadv	Special Educ	LEP	At Risk	Migrant	Male	Female	All	District
<b>ALGEBRA I</b>	<b>2012</b>			*	*	*	*	*		*		*	0.4
	<b>2013</b>		*	0.0	0.0	0.0	*	0.0		0.0	*	0.0	0.0
	<b>2014</b>			0.0	*	0.0	*	0.0		*	*	0.0	1.4
Tests Taken	<b>2012</b>			3	3	3	1	3		3		3	280
	<b>2013</b>		2	6	8	8	3	8		6	2	8	339
	<b>2014</b>			6	5	6	4	6		4	2	6	360

## AVERAGE PERCENTAGE OF ITEMS CORRECT BY REPORTING CATEGORY

ALGEBRA I	1. Functional Relationships	2. Properties and Attributes of Functions	3. Linear Functions	4. Linear Equations and Inequalities	5. Quadratic and Other Nonlinear Functions
2012	*	*	*	*	*
2013	35.4	27.5	29.2	32.8	48.2
2014	55.6	46.7	45.8	33.3	50.0

**PERCENTAGE SATISFACTORY (Levels 2 or 3)**

Grade	Year	White	African Amer	Hispanic	Econ Disadv	Special Educ	LEP	At Risk	Migrant	Male	Female	All	District	Number Tested (All Students)
5	2012		*	33.3	42.9	42.9	*	33.3		*	*	42.9	48.8	7
	2013			38.5	38.5	38.5	42.9	44.4		42.9	33.3	38.5	58.1	13
	2014			37.5	28.6	37.5	*	42.9		*	*	37.5	55.5	8

NUMBER TESTED IN GRADE 5													
2012		1	6	7	7	3	6		3	4	7	531	
2013			13	13	13	7	9		7	6	13	540	
2014			8	7	8	4	7		4	4	8	501	



**PERCENTAGE SATISFACTORY (Levels 2 or 3)**

Grade	Year	White	African Amer	Hispanic	Econ Disadv	Special Educ	LEP	At Risk	Migrant	Male	Female	All	District	Number Tested (All Students)
8	2012		*	87.5	70.0	70.0	*	70.0		77.8	*	70.0	58.2	10
	2013			91.7	90.9	91.7	87.5	91.7		90.0	*	91.7	59.3	12
	2014		*	62.5	62.5	55.6	*	55.6		50.0	*	55.6	63.5	9

NUMBER TESTED IN GRADE 8													
2012		1	8	10	10	5	10		9	1	10	457	
2013			12	11	12	8	12		10	2	12	526	
2014		1	8	8	9	4	9		8	1	9	474	

**NUMBER UNSATISFACTORY (Level 1)**

Grade	Year	White	African Amer	Hispanic	Econ Disadv	Special Educ	LEP	At Risk	Migrant	Male	Female	All	District	Number Tested (All Students)
5	2012		*	4	4	4	*	4		*	*	4	272	7
	2013			8	8	8	4	5		4	4	8	226	13
	2014			5	5	5	*	4		*	*	5	223	8

NUMBER TESTED IN GRADE 5													
2012		1	6	7	7	3	6		3	4	7	531	
2013			13	13	13	7	9		7	6	13	540	
2014			8	7	8	4	7		4	4	8	501	

**NUMBER UNSATISFACTORY (Level 1)**

Grade	Year	White	African Amer	Hispanic	Econ Disadv	Special Educ	LEP	At Risk	Migrant	Male	Female	All	District	Number Tested (All Students)
8	2012		*	1	3	3	*	3		2	*	3	191	10
	2013			1	1	1	1	1		1	*	1	214	12
	2014		*	3	3	4	*	4		4	*	4	173	9

NUMBER TESTED IN GRADE 8													
2012		1	8	10	10	5	10		9	1	10	457	
2013			12	11	12	8	12		10	2	12	526	
2014		1	8	8	9	4	9		8	1	9	474	

**PERCENTAGE ADVANCED (Level 3)**

Grade	Year	White	African Amer	Hispanic	Econ Disadv	Special Educ	LEP	At Risk	Migrant	Male	Female	All	District	Number Tested (All Students)
5	2012		*	0.0	0.0	0.0	*	0.0		*	*	0.0	6.2	7
	2013			7.7	7.7	7.7	0.0	11.1		14.3	0.0	7.7	6.1	13
	2014			0.0	0.0	0.0	*	0.0		*	*	0.0	7.6	8

NUMBER TESTED IN GRADE 5													
2012		1	6	7	7	3	6		3	4	7	531	
2013			13	13	13	7	9		7	6	13	540	
2014			8	7	8	4	7		4	4	8	501	

**PERCENTAGE ADVANCED (Level 3)**

Grade	Year	White	African Amer	Hispanic	Econ Disadv	Special Educ	LEP	At Risk	Migrant	Male	Female	All	District	Number Tested (All Students)
8	2012		*	0.0	0.0	0.0	*	0.0		0.0	*	0.0	0.4	10
	2013			8.3	9.1	8.3	12.5	8.3		10.0	*	8.3	2.5	12
	2014		*	0.0	0.0	0.0	*	0.0		0.0	*	0.0	3.8	9

NUMBER TESTED IN GRADE 8													
2012		1	8	10	10	5	10		9	1	10	457	
2013			12	11	12	8	12		10	2	12	526	
2014		1	8	8	9	4	9		8	1	9	474	

## AVERAGE PERCENTAGE OF ITEMS CORRECT BY REPORTING CATEGORY

Grade	Year	REPORTING CATEGORY			
		1. Matter and Energy	2. Force, Motion, and Energy	3. Earth and Space	4. Organisms and Environments
5	2012	47.6	67.9	57.1	51.9
	2013	51.3	61.5	53.1	60.1
	2014	52.1	62.5	60.0	60.2
8	2012	59.1	61.0	61.8	50.9
	2013	75.8	81.7	78.0	62.1
	2014	52.5	58.9	58.6	52.5

## PERCENTAGE SATISFACTORY (Levels 2 and 3)

Test	Year	White	African Amer	Hispanic	Econ Disadv	Special Educ	LEP	At Risk	Migrant	Male	Female	All	District
<b>BIOLOGY</b>	<b>2012</b>			*	*	*	*	*		*		*	31.7
	<b>2013</b>		*	33.3	28.6	28.6	*	28.6		33.3	*	28.6	42.6
	<b>2014</b>			28.6	33.3	28.6	*	28.6		*	*	28.6	46.6
Tests Taken	<b>2012</b>			3	3	3	1	3		3		3	262
	<b>2013</b>		1	6	7	7	3	7		6	1	7	331
	<b>2014</b>			7	6	7	5	7		5	2	7	350

## NUMBER UNSATISFACTORY (Level 1)

Test	Year	White	African Amer	Hispanic	Econ Disadv	Special Educ	LEP	At Risk	Migrant	Male	Female	All	District
BIOLOGY	2012			*	*	*	*	*		*		*	179
	2013		*	4	5	5	*	5		4	*	5	190
	2014			5	4	5	*	5		*	*	5	187
Tests Taken	2012			3	3	3	1	3		3		3	262
	2013		1	6	7	7	3	7		6	1	7	331
	2014			7	6	7	5	7		5	2	7	350



## PERCENTAGE ADVANCED (Level 3)

Test	Year	White	African Amer	Hispanic	Econ Disadv	Special Educ	LEP	At Risk	Migrant	Male	Female	All	District
BIOLOGY	2012			*	*	*	*	*		*		*	0.0
	2013		*	0.0	0.0	0.0	*	0.0		0.0	*	0.0	0.0
	2014			0.0	0.0	0.0	*	0.0		*	*	0.0	1.1
Tests Taken	2012			3	3	3	1	3		3		3	262
	2013		1	6	7	7	3	7		6	1	7	331
	2014			7	6	7	5	7		5	2	7	350

## AVERAGE PERCENTAGE OF ITEMS CORRECT BY REPORTING CATEGORY

<b>BIOLOGY</b>	1. Cell Structure and Function	2. Mechanisms of Genetics	3. Biological Evolution and Classification	4. Biological Processes and Systems	5. Interdependence within Environmental Systems
<b>2012</b>	*	*	*	*	*
<b>2013</b>	41.3	35.7	42.9	41.3	34.9
<b>2014</b>	54.0	42.9	51.8	52.4	30.2

**PERCENTAGE SATISFACTORY (Levels 2 or 3)**

Grade	Year	White	African Amer	Hispanic	Econ Disadv	Special Educ	LEP	At Risk	Migrant	Male	Female	All	District	Number Tested (All Students)
8	2012		*	85.7	66.7	66.7	*	66.7		75.0	*	66.7	52.3	9
	2013			90.9	100.0	90.9	85.7	90.9		88.9	*	90.9	59.5	11
	2014		*	100.0	87.5	88.9	*	88.9		87.5	*	88.9	59.3	9

NUMBER TESTED IN GRADE 8													
2012		1	7	9	9	4	9		8	1	9	451	
2013			11	10	11	7	11		9	2	11	516	
2014		1	8	8	9	4	9		8	1	9	479	

**NUMBER UNSATISFACTORY (Level 1)**

Grade	Year	White	African Amer	Hispanic	Econ Disadv	Special Educ	LEP	At Risk	Migrant	Male	Female	All	District	Number Tested (All Students)
8	2012		*	1	3	3	*	3		2	*	3	215	9
	2013			1	0	1	1	1		1	*	1	209	11
	2014		*	0	1	1	*	1		1	*	1	195	9

NUMBER TESTED IN GRADE8													
2012		1	7	9	9	4	9		8	1	9	451	
2013			11	10	11	7	11		9	2	11	516	
2014		1	8	8	9	4	9		8	1	9	479	

**PERCENTAGE ADVANCED (Level 3)**

Grade	Year	White	African Amer	Hispanic	Econ Disadv	Special Educ	LEP	At Risk	Migrant	Male	Female	All	District	Number Tested (All Students)
8	2012		*	0.0	0.0	0.0	*	0.0		0.0	*	0.0	2.9	9
	2013			9.1	10.0	9.1	14.3	9.1		11.1	*	9.1	1.9	11
	2014		*	0.0	0.0	0.0	*	0.0		0.0	*	0.0	3.5	9

NUMBER TESTED IN GRADE 8													
2012		1	7	9	9	4	9		8	1	9	451	
2013			11	10	11	7	11		9	2	11	516	
2014		1	8	8	9	4	9		8	1	9	479	

## AVERAGE PERCENTAGE OF ITEMS CORRECT BY REPORTING CATEGORY

Grade	Year	REPORTING CATEGORY			
		1. History	2. Geography and Culture	3. Government and Citizenship	4. Economics, Science, Technology, and Society
8	2012	50.0	53.3	51.1	53.7
	2013	64.8	66.4	65.5	56.1
	2014	64.6	58.9	55.6	63.0

PERCENTAGE AT OR ABOVE THE 40th PERCENTILE on the ITBS

Grade	Year	READING TOTAL (**READING PROFILE TOTAL )				
		At Risk	Not At Risk	All	District	Number Tested (All Students)
K**	2012	42.1	50.0	48.5	62.2	97
	2013	27.3	62.4	58.3	60.8	96
	2014	35.3	50.0	47.9	60.7	117
1	2012	41.0	58.1	52.2	55.4	113
	2013	48.1	50.6	50.0	55.0	110
	2014	26.7	39.2	37.2	47.2	94
2	2012	29.4	75.9	41.2	49.8	114
	2013	32.8	65.9	45.9	50.2	111
	2014	15.9	55.3	32.7	44.4	110
K-2	2012	34.3	57.5	47.2	55.8	227
	2013	35.3	59.6	52.8	56.7	317
	2014	23.2	48.2	41.8	53.1	321
# Tested (GR K-2)	2012	143	181	324	21,034	
	2013	116	297	413	28,878	
	2014	112	326	438	28,063	

Grade	Year	MATHEMATICS TOTAL (**MATHEMATICS )				
		At Risk	Not At Risk	All	District	Number Tested (All Students)
K**	2012	56.0	56.5	56.2	55.1	333
	2013	55.8	68.2	59.0	55.1	346
	2014	47.7	52.8	49.5	55.0	305
1	2012	42.7	46.8	43.5	50.7	363
	2013	38.1	48.3	40.6	52.0	360
	2014	27.9	40.9	31.7	46.0	315
2	2012	53.0	72.7	54.8	57.9	361
	2013	51.2	75.0	54.3	56.2	339
	2014	41.2	56.9	43.6	52.0	342
K-2	2012	50.5	55.4	51.4	54.5	1,057
	2013	48.3	61.6	51.1	54.4	1,045
	2014	38.9	49.2	41.6	51.0	962
# Tested (GR K-2)	2012	862	195	1,057	40,477	
	2013	826	219	1,045	40,966	
	2014	712	250	962	40,233	

## PERCENTAGE AT OR ABOVE THE 40th PERCENTILE

Grade	Year	White	African Amer	Hispanic	Econ Disadv	Special Educ	LEP	At Risk	Migrant	Male	Female	All	District	Number Tested (All Students)
K**	2012	*	62.5	48.8	46.5	*	46.2	42.1		48.1	48.9	48.5	62.2	97
	2013	*	*	55.2	56.5	*	20.0	27.3		54.4	64.1	58.3	60.8	96
	2014	*	60.0	46.5	45.3	*	33.3	35.3		53.6	42.6	47.9	60.7	117
1	2012	*	*	51.9	50.5	*	42.9	41.0		49.1	55.0	52.2	55.4	113
	2013	*	66.7	47.3	47.5	*	36.4	48.1		51.7	48.0	50.0	55.0	110
	2014	*	33.3	38.4	37.1	*	18.2	26.7		34.0	41.5	37.2	47.2	94
2	2012		54.5	39.8	38.9	12.5	19.0	29.4		39.1	44.0	41.2	49.8	114
	2013	*	50.0	46.0	46.2	16.7	30.8	32.8		39.6	51.7	45.9	50.2	111
	2014	*	40.0	29.5	31.4	12.5	15.4	15.9		36.9	26.7	32.7	44.4	110
1-2	2012	*	53.3	45.9	44.7	21.1	28.6	33.1		43.6	50.0	46.7	52.7	227
	2013	54.5	69.6	49.3	49.8	27.3	29.4	36.2		48.8	53.7	51.1	55.4	317
	2014	50.0	46.2	38.3	38.0	5.9	22.2	21.1		41.4	37.4	39.6	50.6	321
# Tested (GR K-2)	2012	4	15	207	215	19	35	124		117	110	227	14,095	
	2013	11	23	280	297	11	34	105		170	147	317	21,640	
	2014	10	26	282	297	17	36	95		174	147	321	21,214	

\*\*Kindergarten subscore is Reading Profile Total; no Reading Total subscore available.



## NUMBER AT OR ABOVE THE 80th PERCENTILE

Grade	Year	White	African Amer	Hispanic	Econ Disadv	Special Educ	LEP	At Risk	Migrant	Male	Female	All	District	Number Tested (All Students)
K**	2012	*	3	16	13	*	1	2		8	11	19	2,027	97
	2013	*	*	20	20	*	1	1		13	9	22	2,108	96
	2014	*	2	10	11	*	1	1		7	6	13	1,938	117
1	2012	*	*	20	19	*	0	7		6	14	20	1,963	113
	2013	*	5	19	21	*	1	6		13	12	25	2,017	110
	2014	*	2	20	20	*	1	3		11	11	22	1,561	94
2	2012		0	5	5	0	0	1		2	3	5	1,017	114
	2013	*	1	10	10	0	0	3		4	7	11	1,045	111
	2014	*	2	4	6	0	0	1		5	2	7	950	110
1-2	2012	*	0	25	24	0	0	8		8	17	25	2,981	227
	2013	1	8	49	51	0	2	10		30	28	58	5,171	317
	2014	2	6	34	37	0	2	5		23	19	42	4,449	321
# Tested (GR K-2)	2012	4	15	207	215	19	35	124		117	110	227	14,095	
	2013	11	23	280	297	11	34	105		170	147	317	21,640	
	2014	10	26	282	297	17	36	95		174	147	321	21,214	

\*\*Kindergarten subscore is Reading Profile Total; no Reading Total subscore available.

## PERCENTAGE AT OR ABOVE THE 40th PERCENTILE

Grade	Year	White	African Amer	Hispanic	Econ Disadv	Special Educ	LEP	At Risk	Migrant	Male	Female	All	District	Number Tested (All Students)
K**	2012	66.7	75.0	55.5	55.7	33.3	56.0	56.0		57.4	54.8	56.2	55.1	333
	2013	*	83.3	58.7	59.0	*	55.9	55.8		55.7	62.4	59.0	55.1	346
	2014	*	70.0	48.8	48.5	12.5	47.7	47.7		49.3	49.7	49.5	55.0	305
1	2012	*	*	43.6	43.8	14.3	43.0	42.7		41.2	46.0	43.5	50.7	363
	2013	*		41.7	40.2	38.8	22.2	37.6		43.8	36.7	40.6	52.0	360
	2014	*		22.2	31.8	32.0	18.2	27.1		32.1	31.4	31.7	46.0	315
2	2012	*		54.5	54.9	54.7	37.5	55.3		59.9	49.1	54.8	57.9	361
	2013	*		33.3	54.6	54.6	23.5	53.1		50.3	58.3	54.3	56.2	339
	2014	*		40.0	43.1	44.0	20.0	42.9		47.9	38.2	43.6	52.0	342
K-2	2012	53.8	60.9	51.2	51.2	29.5	51.4	50.5		52.8	49.8	51.4	54.5	1,057
	2013	61.5	50.0	51.0	50.6	27.6	48.8	48.3		49.7	52.6	51.1	54.4	1,045
	2014	58.3	44.8	41.2	41.5	17.6	39.0	38.9		43.3	39.7	41.6	51.0	962
# Tested (GR K-2)	2012	13	23	1,020	1,025	44	761	862		555	502	1,057	40,477	
	2013	13	24	1,005	1,015	29	750	826		541	504	1,045	40,966	
	2014	12	29	918	920	34	651	712		504	458	962	40,233	

\*\*Kindergarten test is Mathematics; no Mathematics Total score available.

## NUMBER AT OR ABOVE THE 80th PERCENTILE

Grade	Year	White	African Amer	Hispanic	Econ Disadv	Special Educ	LEP	At Risk	Migrant	Male	Female	All	District	Number Tested (All Students)
K**	2012	0	3	51	50	0	38	39		25	29	54	2,472	333
	2013	*	1	57	56	*	42	42		32	27	59	2,594	346
	2014	*	2	33	33	0	19	20		21	14	35	2,598	305
1	2012	*	*	43	41	0	29	33		25	18	43	2,473	363
	2013	*	3	43	43	0	25	30		28	18	46	2,609	360
	2014	*	0	22	24	0	13	14		15	9	24	2,166	315
2	2012	*	1	67	67	3	46	56		43	25	68	2,843	361
	2013	*	1	51	50	0	36	43		27	25	52	2,626	339
	2014	*	3	35	36	0	24	26		25	13	38	2,408	342
K-2	2012	0	4	161	158	3	113	128		93	72	165	7,788	1,057
	2013	1	5	151	149	1	103	115		87	70	157	7,829	1,045
	2014	2	5	90	93	0	56	60		61	36	97	7,172	962
# Tested (GR K-2)	2012	13	23	1,020	1,025	44	761	862		555	502	1,057	40,477	
	2013	13	24	1,005	1,015	29	750	826		541	504	1,045	40,966	
	2014	12	29	918	920	34	651	712		504	458	962	40,233	

\*\*Kindergarten test is Mathematics; no Mathematics Total score available.

## PERCENTAGE AT OR ABOVE THE 40th PERCENTILE

Grade	Year	White	African Amer	Hispanic	Econ Disadv	Special Educ	LEP	At Risk	Migrant	Male	Female	All	District	Number Tested (All Students)
1	2012	*	*	64.3	64.1	42.9	67.1	66.4		61.5	67.0	64.2	62.5	363
	2013	*	58.3	60.3	59.2	22.2	59.2	59.3		61.9	59.0	60.6	63.6	360
	2014	*	11.1	50.0	49.3	27.3	50.9	50.9		50.6	47.7	49.2	58.6	315
2	2012	*	45.5	67.4	66.7	39.1	69.7	66.7		70.3	62.9	66.9	63.6	359
	2013	*	*	60.9	61.0	53.3	62.6	60.9		62.1	59.5	60.8	60.6	337
	2014	*	50.0	53.8	54.7	26.7	53.8	53.3		56.3	52.0	54.4	59.2	342
1-2	2012	66.7	46.7	65.9	65.4	40.5	68.4	66.6		66.0	65.0	65.5	63.0	722
	2013	87.5	52.9	60.6	60.1	41.7	60.9	60.1		62.0	59.3	60.7	62.1	697
	2014	88.9	31.6	52.0	52.2	26.9	52.4	52.2		53.7	49.8	51.9	58.9	657
# Tested (GR 1-2)	2012	6	15	700	705	37	519	613		379	343	722	26,880	
	2013	8	17	670	674	24	493	567		363	334	697	27,003	
	2014	9	19	629	627	26	458	513		352	305	657	26,955	

## NUMBER AT OR ABOVE THE 80th PERCENTILE

Grade	Year	White	African Amer	Hispanic	Econ Disadv	Special Educ	LEP	At Risk	Migrant	Male	Female	All	District	Number Tested (All Students)
1	2012	*	*	93	93	2	72	81		44	50	94	4,060	363
	2013	*	3	83	84	2	61	66		49	39	88	4,150	360
	2014	*	0	54	53	2	39	41		30	25	55	3,708	315
2	2012	*	3	102	104	7	77	93		68	38	106	3,820	359
	2013	*	*	76	76	1	60	71		41	37	78	3,436	337
	2014	*	1	69	68	0	53	59		40	31	71	3,288	342
1-2	2012	1	4	195	197	9	149	174		112	88	200	7,880	722
	2013	2	4	159	160	3	121	137		90	76	166	7,586	697
	2014	2	1	123	121	2	92	100		70	56	126	6,996	657
# Tested (GR 1-2)	2012	6	15	700	705	37	519	613		379	343	722	26,880	
	2013	8	17	670	674	24	493	567		363	334	697	27,003	
	2014	9	19	629	627	26	458	513		352	305	657	26,955	

## PERCENTAGE AT OR ABOVE THE 40th PERCENTILE

Grade	Year	White	African Amer	Hispanic	Econ Disadv	Special Educ	LEP	At Risk	Migrant	Male	Female	All	District	Number Tested (All Students)
K	2012	*		94.4	94.3	*	94.7	94.7		91.8	97.3	94.4	89.9	233
	2013	*	*	90.3	90.7	*	90.2	90.3		87.4	93.1	90.4	89.7	250
	2014			89.8	89.8	*	89.4	89.5		88.3	91.4	89.8	88.6	187
1	2012	*		88.7	88.6	45.5	88.6	88.7		85.9	92.1	88.8	89.2	249
	2013			83.7	83.5	*	83.8	83.9		82.0	85.7	83.7	87.6	245
	2014	*	*	80.1	79.6	*	79.8	79.8		75.0	84.7	79.9	84.6	244
2	2012	*		93.8	93.8	50.0	93.7	93.8		93.7	94.0	93.8	93.3	243
	2013			94.0	93.9	63.6	93.9	94.0		90.7	97.2	94.0	93.6	216
	2014			86.3	86.3	33.3	86.5	86.5		82.6	90.6	86.3	91.8	211
K-2	2012	*		92.2	92.2	57.1	92.3	92.3		90.4	94.4	92.3	90.8	725
	2013	*	*	89.1	89.2	58.8	89.2	89.2		86.4	92.0	89.2	90.3	711
	2014	*	*	85.0	84.8	46.7	84.7	84.8		81.5	88.5	84.9	88.2	642
# Tested (GR K-2)	2012	3		722	716	21	710	714		384	341	725	18,911	
	2013	2	1	708	701	17	701	705		360	351	711	18,629	
	2014	2	1	639	625	15	629	632		329	313	642	18,008	

## NUMBER AT OR ABOVE THE 80th PERCENTILE

Grade	Year	White	African Amer	Hispanic	Econ Disadv	Special Educ	LEP	At Risk	Migrant	Male	Female	All	District	Number Tested (All Students)
K	2012	*		152	149	*	149	149		75	78	153	3,679	233
	2013	*	*	160	160	*	158	159		72	89	161	3,798	250
	2014			103	103	*	99	99		45	58	103	3,313	187
1	2012	*		86	85	1	85	85		42	44	86	2,437	249
	2013			95	93	*	92	93		42	53	95	2,394	245
	2014	*	*	67	62	*	66	66		25	42	67	2,123	244
2	2012	*		122	121	0	120	121		62	61	123	2,934	243
	2013			102	102	1	102	102		42	60	102	2,899	216
	2014			82	78	0	80	80		45	37	82	2,596	211
K-2	2012	*		360	355	1	354	355		179	183	362	9,050	725
	2013	*	*	357	355	2	352	354		156	202	358	9,091	711
	2014	*	*	252	243	1	245	245		115	137	252	8,032	642
# Tested (GR K-2)	2012	3		722	716	21	710	714		384	341	725	18,911	
	2013	2	1	708	701	17	701	705		360	351	711	18,629	
	2014	2	1	639	625	15	629	632		329	313	642	18,008	

## PERCENTAGE DEMONSTRATING IMPROVEMENT

Grade	Level 1 in 2013		Level 2 in 2013		Level 3 in 2013		Levels 1-3 in 2013	
	Number Tested Both Years	Percentage Improved in 2014	Number Tested Both Years	Percentage Improved in 2014	Number Tested Both Years	Percentage Improved in 2014	Number Tested Both Years	Percentage Improved in 2014
5	5	*	1	*	0		6	50.0
6	11	54.5	6	50.0	0		17	52.9
7	7	28.6	3	*	0		10	40.0
8	7	28.6	6	66.7	0		13	46.2
9	26	19.2	9	33.3	0		35	22.9
10	11	18.2	9	55.6	0		20	35.0
11	6	50.0	5	*	0		11	54.5
12	7	42.9	9	44.4	0		16	43.8
ALL	80	31.3	48	52.1	0		128	39.1



**PERFORMANCE IN 2014**

Grade 2013-14 (N Rated)	Domain:	Listening		Speaking		Writing		Reading		Composite	
	2014 Level	N	%	N	%	N	%	N	%	N	%
KN (194)	Beginning	101	52.1	126	64.9	172	88.7	173	89.2	169	87.1
	Intermediate	65	33.5	46	23.7	16	8.2	10	5.2	14	7.2
	Advanced	23	11.9	18	9.3	1	0.5	4	2.1	6	3.1
	Advanced High	5	2.6	4	2.1	5	2.6	7	3.6	5	2.6
1 (257)	Beginning	129	50.2	129	50.2	213	82.9	176	68.5	175	68.1
	Intermediate	85	33.1	92	35.8	28	10.9	61	23.7	59	23.0
	Advanced	28	10.9	28	10.9	13	5.1	14	5.4	17	6.6
	Advanced High	15	5.8	8	3.1	3	1.2	6	2.3	6	2.3
2 (247)	Beginning	73	29.6	71	28.7	93	37.7	77	31.3	52	21.1
	Intermediate	39	15.8	65	26.3	89	36.0	101	41.1	117	47.6
	Advanced	112	45.3	92	37.2	56	22.7	48	19.5	60	24.4
	Advanced High	23	9.3	19	7.7	9	3.6	20	8.1	17	6.9
3 (228)	Beginning	6	2.7	27	12.0	39	17.3	59	25.9	30	13.3
	Intermediate	85	37.8	74	32.9	106	47.1	69	30.3	89	39.6
	Advanced	82	36.4	90	40.0	58	25.8	55	24.1	68	30.2
	Advanced High	52	23.1	34	15.1	22	9.8	45	19.7	38	16.9
4 (243)	Beginning	14	5.8	18	7.4	27	11.1	37	15.2	19	7.8
	Intermediate	40	16.5	52	21.4	88	36.2	77	31.7	73	30.0
	Advanced	105	43.2	104	42.8	72	29.6	92	37.9	106	43.6
	Advanced High	84	34.6	69	28.4	56	23.0	37	15.2	45	18.5

**PROGRESSION FROM  
2013 TO 2014**

Number Rated Both Years N (%) Progressed	2014 Level	2013 Level			
		Beg	Int	Adv	Adv High
-	Beginning	-			
	Intermediate	-	-		
	Advanced	-	-	-	
	Advanced High	-	-	-	
237 70 (29.5%)	Beginning	159			
	Intermediate	51	6		
	Advanced	13	1	2	
	Advanced High	3	1	1	
233 143 (61.4%)	Beginning	49			
	Intermediate	81	28		
	Advanced	21	25	13	
	Advanced High	1	5	10	
216 58 (26.9%)	Beginning	25			
	Intermediate	12	73		
	Advanced	0	8	60	
	Advanced High	0	0	38	
232 68 (29.3%)	Beginning	13			
	Intermediate	14	55		
	Advanced	0	10	96	
	Advanced High	0	0	44	

**PERFORMANCE IN 2014**

Grade 2013-14 (N Rated)	Domain:	Listening		Speaking		Writing		Reading		Composite	
	2014 Level	N	%	N	%	N	%	N	%	N	%
5 (233)	Beginning	12	5.2	16	6.9	14	6.1	19	8.2	11	4.8
	Intermediate	28	12.1	24	10.3	57	24.8	27	11.6	27	11.7
	Advanced	80	34.5	81	34.9	76	33.0	95	40.9	93	40.4
	Advanced High	112	48.3	111	47.8	83	36.1	91	39.2	99	43.0
6 (149)	Beginning	1	0.7	5	3.4	9	6.2	27	18.5	8	5.6
	Intermediate	30	20.1	29	19.6	53	36.3	62	42.5	47	32.6
	Advanced	78	52.3	80	54.1	59	40.4	42	28.8	71	49.3
	Advanced High	40	26.8	34	23.0	25	17.1	15	10.3	18	12.5
7 (153)	Beginning	1	0.7	5	3.3	8	5.3	11	7.2	6	4.0
	Intermediate	22	14.5	28	18.4	43	28.5	52	34.2	29	19.3
	Advanced	70	46.1	71	46.7	67	44.4	61	40.1	80	53.3
	Advanced High	59	38.8	48	31.6	33	21.9	28	18.4	35	23.3
8 (118)	Beginning	3	2.5	4	3.4	6	5.1	6	5.3	4	3.5
	Intermediate	19	16.1	24	20.3	33	28.0	35	30.7	24	21.1
	Advanced	51	43.2	48	40.7	47	39.8	63	55.3	66	57.9
	Advanced High	45	38.1	42	35.6	32	27.1	10	8.8	20	17.5
9 (114)	Beginning	3	2.7	9	8.0	7	6.2	22	19.3	7	6.2
	Intermediate	18	15.9	23	20.4	24	21.2	30	26.3	28	24.8
	Advanced	41	36.3	35	31.0	41	36.3	42	36.8	38	33.6
	Advanced High	51	45.1	46	40.7	41	36.3	20	17.5	40	35.4

**PROGRESSION FROM  
2013 TO 2014**


Number Rated Both Years N (%) Progressed	2014 Level	2013 Level			
		Beg	Int	Adv	Adv High
214 130 (60.7%)	Beginning	6			
	Intermediate	5	20		
	Advanced	1	28	58	
	Advanced High	0	3	93	
136 26 (19.1%)	Beginning	5			
	Intermediate	5	39		
	Advanced	0	3	66	
	Advanced High	0	0	18	
137 49 (35.8%)	Beginning	1			
	Intermediate	2	24		
	Advanced	0	13	63	
	Advanced High	0	1	33	
96 25 (26.0%)	Beginning	0			
	Intermediate	1	16		
	Advanced	0	7	55	
	Advanced High	0	1	16	
60 31 (51.7%)	Beginning	0			
	Intermediate	2	9		
	Advanced	0	3	20	
	Advanced High	0	0	26	

**PERFORMANCE IN 2014**

Grade 2013-14  (N Rated)	Domain:	Listening		Speaking		Writing		Reading		Composite	
	2014 Level	N	%	N	%	N	%	N	%	N	%
10  (106)	Beginning	0	0.0	3	2.8	5	4.7	13	12.6	2	1.9
	Intermediate	5	4.7	17	16.0	26	24.5	26	25.2	28	27.2
	Advanced	45	42.5	42	39.6	48	45.3	41	39.8	41	39.8
	Advanced High	56	52.8	44	41.5	27	25.5	23	22.3	32	31.1
11  (63)	Beginning	0	0.0	4	6.3	0	0.0	4	6.3	0	0.0
	Intermediate	14	22.2	16	25.4	15	23.8	15	23.8	15	23.8
	Advanced	26	41.3	20	31.7	25	39.7	25	39.7	25	39.7
	Advanced High	23	36.5	23	36.5	23	36.5	19	30.2	23	36.5
12  (45)	Beginning	0	0.0	0	0.0	0	0.0	3	6.8	0	0.0
	Intermediate	6	14.0	6	14.0	10	23.3	14	31.8	4	9.5
	Advanced	19	44.2	20	46.5	17	39.5	19	43.2	26	61.9
	Advanced High	18	41.9	17	39.5	16	37.2	8	18.2	12	28.6
ALL  (2,150)	Beginning	343	16.0	417	19.5	593	27.8	627	29.4	483	22.7
	Intermediate	456	21.3	496	23.2	588	27.5	579	27.1	554	26.1
	Advanced	760	35.5	729	34.0	580	27.2	601	28.1	697	32.8
	Advanced High	583	27.2	499	23.3	375	17.6	329	15.4	390	18.4

**PROGRESSION FROM  
2013 TO 2014**

Number Rated Both Years  N (%) Progressed	2014 Level	2013 Level			
		Beg	Int	Adv	Adv High
96  41 (42.7%)	Beginning	1			
	Intermediate	8	20		
	Advanced	1	2	34	
	Advanced High	1	0	29	
55  23 (41.8%)	Beginning	0			
	Intermediate	2	13		
	Advanced	0	1	19	
	Advanced High	0	1	19	
35  13 (37.1%)	Beginning	0			
	Intermediate	0	3		
	Advanced	0	3	19	
	Advanced High	0	0	10	
1,747  677 (38.8%)	Beginning	259			
	Intermediate	183	306		
	Advanced	36	104	505	
	Advanced High	5	12	337	

 Indicates students who progressed at least one level from 2013 to 2014.