

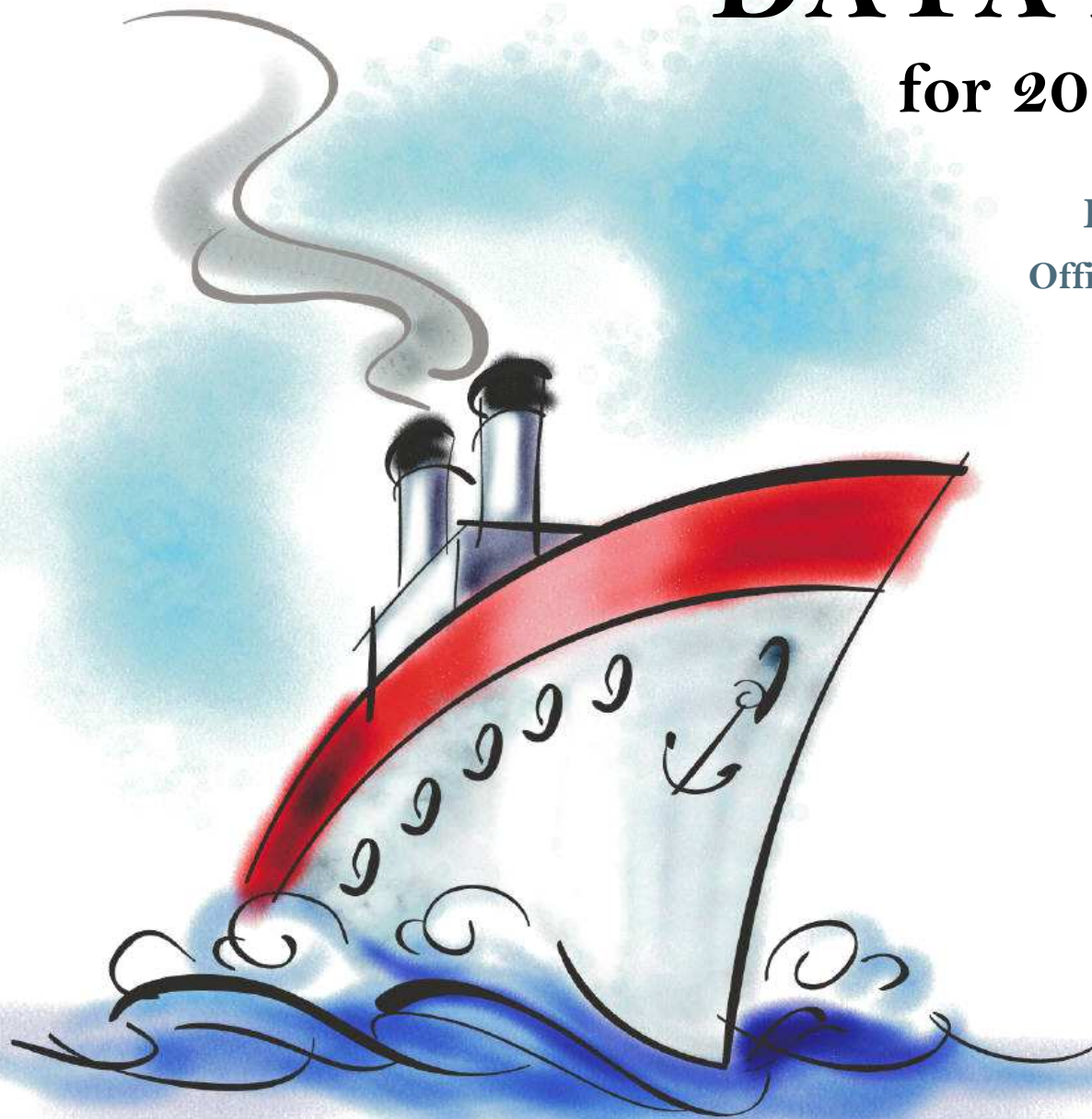
# DATA PACKET

for 2014-15 planning

Evaluation & Assessment  
Office of Institutional Research  
<http://mydata.dallasisd.org>  
[OIR@dallasisd.org](mailto:OIR@dallasisd.org)

September 8, 2014

**BRYAN ADAMS  
FEEDER GROUP**



**Dallas Independent School District**

2. Contents ..... Table of Contents

**STUDENTS AND STAFF**

- 5. Summary ..... Summary of Student and Teacher Statistics
- 9. Enroll (2) ..... Enrollment Statistics by Select Student Group
- 15. Teachers ..... Teacher Statistics

**STAAR (English)**

- 16. Reading (3-8) .... STAAR 3-8 Reading in English
- 28. Writing (3-8) ..... STAAR 3-8 Writing in English
- 43. Math (EOC) ..... STAAR EOC Mathematics
- 54. Science (EOC) ... STAAR EOC Science
- 62. SS (EOC) ..... STAAR EOC Social Studies

**STAAR (Spanish)**

- 66. Reading (3-8) .... STAAR 3-8 Reading in Spanish
- 74. Math (3-8) ..... STAAR 3-8 Mathematics in Spanish

**STAAR L**

- 82. Math (3-8) ..... STAAR L 3-8 Mathematics
- 94. Science (3-8) ..... STAAR L 3-8 Science
- 105. SS (3-8) ..... STAAR L 3-8 Social Studies

**STAAR M**

- 109. Reading (3-8) .... STAAR M 3-8 Reading
- 121. Writing (3-8) ..... STAAR M 3-8 Writing
- 136. Math (EOC) ..... STAAR M EOC Mathematics
- 147. Science (EOC) ... STAAR M EOC Science
- 155. SS (EOC) ..... STAAR M EOC Social Studies

**ITBS/LOGRAMOS**

- 159. Compliance ..... SCE Compliance for At-Risk Students
- 162. Math ..... ITBS Mathematics Subtests

**ENGLISH PROFICIENCY**

- 168. WMLS ..... Woodcock-Muñoz Language Survey

3. Notes ..... Notes and Data Descriptions

- 6. Enroll (1) ..... Enrollment Statistics by Ethnicity
- 12. Attendance ..... Student Attendance Statistics

- 24. Reading (EOC) .. STAAR EOC Reading
- 35. Math (3-8) ..... STAAR 3-8 Mathematics in English
- 47. Science (3-8) ..... STAAR 3-8 Science in English
- 58. SS (3-8) ..... STAAR 3-8 Social Studies in English

- 70. Writing (3-8) ..... STAAR 3-8 Writing in Spanish
- 78. Science (3-8) ..... STAAR 3-8 Science in Spanish

- 90. Math (EOC) ..... STAAR L EOC Mathematics
- 101. Science (EOC) ... STAAR L EOC Science

- 117. Reading (EOC) .. STAAR M EOC Reading
- 128. Math (3-8) ..... STAAR M 3-8 Mathematics
- 140. Science (3-8) ..... STAAR M 3-8 Science
- 151. SS (3-8) ..... STAAR M 3-8 Social Studies

- 160. Reading ..... ITBS Reading Subtests
- 166. Reading ..... Logramos Reading Subtests

- 169. TELPAS ..... Texas English Language Proficiency Assessment System

## **2013-14 SCHOOL SUMMARY**

- Student percentages are computed as the percentage of total student enrollment.
- Additional statistics are available in ENROLLMENT and TEACHER reports.
- Race/ethnic categories are based on the newest federal standards for ethnicity and race reporting, though some categories have been combined because of small group sizes. Students reporting their ethnicity as “Hispanic” are not counted in any race category.
- “Economically disadvantaged” students are those who qualify for free or reduced-price lunch through the federal government's program.
- Teacher demographics and assignments are from the district's Public Education Information Management System (PEIMS) submission to the TEA.

## **ENROLLMENT**

- Statistics are based on the school's enrollment at the end of the fifth six-weeks grading period.
- “Economically disadvantaged” students are those receiving free or reduced-price lunches.
- “New” students were new to the district in 2013-14. They are counted as new if not enrolled in a district campus before the last day of the 2012-13 school year.
- The “retention rate” is the percentage of students in the same grade at the end of the fifth six-weeks grading period for both 2012-13 and 2013-14.

## **ATTENDANCE**

- Statistics are based on student attendance through the end of the sixth six-weeks grading period (the end of the school year).
- “Average daily membership” is the total number of school days students were ENROLLED divided by the number of school days in the year.
- The “average daily attendance” number (N) is the total number of school days students were IN ATTENDANCE divided by the number of school days in the year. The “average daily attendance” percentage (%) is the average attendance rate. For each student, the number of days attended is divided by the number of days enrolled. This rate is then averaged across students.
- The number (N) of “yearly transactions” is the total number of transfer and withdrawal transactions in the school year. The percentage (%) is the number of transactions divided by “average daily membership,” which gives (on average) the percentage of the membership associated with a transaction.
- “Continuously enrolled” students are enrolled and in attendance for a minimum number of instructional days in at least one course at the school between the beginning of the school year and the first day of the main STAAR testing period. The minimum number varies depending on the school year's calendar, but is typically around 130 days.
- The “stability rate” is the number of continuously enrolled students divided by “average daily membership.”

## **TEACHERS**

- Teacher demographics and assignments are from the district's Public Education Information Management System (PEIMS) submission to the TEA.
- Teacher absences counted towards the average DO NOT include vacation days (coded as VAC in personnel database).
- Retention rate for a school year is computed with numerator “# of teachers assigned to the school both that year and the year prior” and denominator “# of teachers assigned to the school for the prior year.” That is, the retention rate is the percentage of the prior year's teachers who continued at the school.

### **STAAR, STAAR L, and STAAR M**

- Cells marked with an asterisk (\*) indicate five or fewer students were tested. Blank cells indicate no students were tested.
- Student group assignments are from the district's Public Education Information Management System (PEIMS) submission to the TEA.
- STAAR statistics are based on results from standard STAAR only. STAAR L and STAAR M statistics are computed separately, following TEA reporting practice.
- “Percentage Satisfactory” is the percentage of students achieving Level 2 (Satisfactory) or Level 3 (Advanced).
- Statistics by reporting category are averages for all students (across student groups and genders).
- An “average percentage correct” is computed as follows: for each student, divide the number of items correctly answered by the total number of items in the test section, then average the resulting percentages across all students. For short answers on EOC English tests, an “average rating” is presented; STAAR EOC short answers are rated on a scale of 0 to 3. For written compositions on writing tests, “average score points” is presented. Additional details provided in report footnotes.
- Reading and mathematics statistics for SSI grades 5 and 8 are based on scores cumulative through the second administration. EOC statistics are based on first administration scores from the fall and spring administrations.
- Beginning in 2014, EOC Reading and EOC Writing tests were replaced with EOC English tests.

### **SCE COMPLIANCE and ITBS / ITED / LOGRAMOS**

- Cells marked with an asterisk (\*) indicate five or fewer students were tested. Blank cells indicate no students were tested.
- Student group assignments are based on demographic data in the Dallas ISD student database.
- Kindergarten ITBS reading statistics are based on the Reading Profile Total summary score. All other grades' ITBS reading statistics, and Logramos reading statistics for all grades, are based on the Reading Total summary score. (Reading Total values not available with use of the ITBS form administered in kindergarten.) “Number tested” statistics include kindergarten.
- Kindergarten ITBS mathematics statistics are based on the Mathematics subtest score. All other grades' statistics are based on the Mathematics Total summary score. (Mathematics Total values not available with use of the ITBS form administered in kindergarten.) “Number tested” statistics include kindergarten.
- Mathematics Total summary scores are combinations of the Mathematics Concepts, Problems, and Computation subtest results. For schools that did not administer Mathematics Concepts or Mathematics Problems subtests, Mathematics Computation statistics are provided separately.

### **TELPAS**

- Students are counted as having tested if any one of the four domains is rated. Because a TELPAS composite rating is not assigned to a student unless all four domains are rated, the number of TELPAS composite ratings may be smaller than the number tested.
- If a student's composite rating did not increase at least one level from 2013 to 2014, the TEA did not report the 2013 composite rating.
- If a student is rated as advanced high in 2014, the TEA does not differentiate between the advanced and advanced high levels from 2013.

**STUDENT ENROLLMENT**

Grade	Enrollment
PK	548
KN	918
1	992
2	868
3	911
4	826
5	767
6	686
7	696
8	655
9	559
10	432
11	393
12	380
ALL	9,631

**STUDENT AND TEACHER RACE/ETHNICITY**

Ethnicity/Race	Students		Teachers	
	Number	Percent	Number	Percent
Black/African American	1,443	15.0	159	26.9
American Indian/Alaska Native	21	0.2	*	*
Asian/Hawaiian/Pacific Islander	166	1.7	*	*
Hispanic	7,275	75.5	159	26.9
White	657	6.8	249	42.1
Multiple	56	0.6	10	1.7
Other* (teachers only)	—	—	14	2.4
Not reported (students only)	0	0.0	—	—

\*For teachers, "Other" category includes American Indian/Alaska Native and Asian/Hawaiian/Pacific Islander.

**SELECT STUDENT GROUP ENROLLMENT**

Group	Number	Percent
At-Risk	7,108	73.8
Economically disadvantaged	8,438	87.6
Limited English proficient (LEP)	4,352	45.2
Special education	777	8.1
Talented and Gifted (TAG)	1,012	10.5

Grade	Year	Enrollment	African American		American Indian		Asian		Hispanic		White		Multiple category	
			N	%	N	%	N	%	N	%	N	%	N	%
PK	2012	472	60	12.7	1	0.2	6	1.3	388	82.2	15	3.2	1	0.2
	2013	527	71	13.5	1	0.2	5	0.9	428	81.2	20	3.8	2	0.4
	2014	548	55	10.0	0	0.0	7	1.3	463	84.5	19	3.5	4	0.7
KN	2012	942	159	16.9	0	0.0	20	2.1	664	70.5	92	9.8	6	0.6
	2013	971	134	13.8	3	0.3	17	1.8	723	74.5	89	9.2	4	0.4
	2014	918	142	15.5	3	0.3	7	0.8	652	71.0	101	11.0	12	1.3
1	2012	985	166	16.9	1	0.1	17	1.7	698	70.9	91	9.2	9	0.9
	2013	911	151	16.6	1	0.1	18	2.0	653	71.7	81	8.9	6	0.7
	2014	992	142	14.3	4	0.4	10	1.0	737	74.3	93	9.4	5	0.5
2	2012	919	133	14.5	3	0.3	13	1.4	680	74.0	78	8.5	11	1.2
	2013	968	166	17.1	1	0.1	14	1.4	687	71.0	95	9.8	4	0.4
	2014	868	142	16.4	0	0.0	19	2.2	636	73.3	65	7.5	5	0.6
3	2012	841	116	13.8	1	0.1	17	2.0	638	75.9	58	6.9	9	1.1
	2013	878	136	15.5	2	0.2	13	1.5	645	73.5	71	8.1	10	1.1
	2014	911	126	13.8	2	0.2	15	1.6	674	74.0	87	9.5	7	0.8
4	2012	812	119	14.7	0	0.0	12	1.5	605	74.5	64	7.9	12	1.5
	2013	779	117	15.0	1	0.1	13	1.7	589	75.6	53	6.8	4	0.5
	2014	826	121	14.6	2	0.2	16	1.9	610	73.8	68	8.2	8	1.0
5	2012	846	139	16.4	3	0.4	22	2.6	613	72.5	65	7.7	4	0.5
	2013	784	122	15.6	0	0.0	11	1.4	586	74.7	57	7.3	7	0.9
	2014	767	105	13.7	1	0.1	13	1.7	587	76.5	55	7.2	4	0.5
PK-5	2012	5,817	892	15.3	9	0.2	107	1.8	4,286	73.7	463	8.0	52	0.9
	2013	5,818	897	15.4	9	0.2	91	1.6	4,311	74.1	466	8.0	37	0.6
	2014	5,830	833	14.3	12	0.2	87	1.5	4,359	74.8	488	8.4	45	0.8

Grade	Year	Enrollment	African American		American Indian		Asian		Hispanic		White		Multiple category	
			N	%	N	%	N	%	N	%	N	%	N	%
6	2012	718	124	17.3	2	0.3	14	1.9	552	76.9	24	3.3	1	0.1
	2013	723	127	17.6	3	0.4	18	2.5	543	75.1	27	3.7	4	0.6
	2014	686	113	16.5	0	0.0	6	0.9	539	78.6	25	3.6	3	0.4
7	2012	656	95	14.5	1	0.2	11	1.7	511	77.9	33	5.0	4	0.6
	2013	681	135	19.8	2	0.3	14	2.1	505	74.2	23	3.4	1	0.1
	2014	696	119	17.1	2	0.3	17	2.4	522	75.0	34	4.9	2	0.3
8	2012	635	96	15.1	5	0.8	14	2.2	490	77.2	27	4.3	1	0.2
	2013	625	86	13.8	1	0.2	9	1.4	490	78.4	34	5.4	4	0.6
	2014	655	112	17.1	2	0.3	15	2.3	499	76.2	24	3.7	2	0.3
6-8	2012	2,009	315	15.7	8	0.4	39	1.9	1,553	77.3	84	4.2	6	0.3
	2013	2,029	348	17.2	6	0.3	41	2.0	1,538	75.8	84	4.1	9	0.4
	2014	2,037	344	16.9	4	0.2	38	1.9	1,560	76.6	83	4.1	7	0.3

Grade	Year	Enrollment	African American		American Indian		Asian		Hispanic		White		Multiple category	
			N	%	N	%	N	%	N	%	N	%	N	%
9	2012	529	98	18.5	4	0.8	12	2.3	394	74.5	20	3.8	0	0.0
	2013	508	79	15.6	4	0.8	15	3.0	394	77.6	14	2.8	1	0.2
	2014	559	74	13.2	1	0.2	9	1.6	441	78.9	32	5.7	2	0.4
10	2012	445	71	16.0	1	0.2	15	3.4	327	73.5	25	5.6	0	0.0
	2013	466	85	18.2	1	0.2	11	2.4	346	74.2	22	4.7	0	0.0
	2014	432	65	15.0	2	0.5	11	2.5	338	78.2	14	3.2	1	0.2
11	2012	412	60	14.6	3	0.7	19	4.6	297	72.1	31	7.5	1	0.2
	2013	423	63	14.9	1	0.2	12	2.8	312	73.8	29	6.9	1	0.2
	2014	393	74	18.8	1	0.3	8	2.0	292	74.3	18	4.6	0	0.0
12	2012	384	68	17.7	2	0.5	19	4.9	258	67.2	33	8.6	2	0.5
	2013	414	60	14.5	3	0.7	19	4.6	296	71.5	32	7.7	3	0.7
	2014	380	53	13.9	1	0.3	13	3.4	285	75.0	22	5.8	1	0.3
9-12	2012	1,770	297	16.8	10	0.6	65	3.7	1,276	72.1	109	6.2	3	0.2
	2013	1,811	287	15.8	9	0.5	57	3.1	1,348	74.4	97	5.4	5	0.3
	2014	1,764	266	15.1	5	0.3	41	2.3	1,356	76.9	86	4.9	4	0.2
ALL	2012	9,596	1,504	15.7	27	0.3	211	2.2	7,115	74.1	656	6.8	61	0.6
	2013	9,658	1,532	15.9	24	0.2	189	2.0	7,197	74.5	647	6.7	51	0.5
	2014	9,631	1,443	15.0	21	0.2	166	1.7	7,275	75.5	657	6.8	56	0.6



Grade	Year	Enrollment	Economically Disadvantaged		LEP		Special Education		At Risk		TAG		New (to District)		Gender		Retention Rate (%)
			N	%	N	%	N	%	N	%	N	%	N	%	% Male	% Female	
PK	2012	472	452	95.8	309	65.5	24	5.1	305	64.6	0	0.0	464	98.3	49.8	50.2	0.4
	2013	527	516	97.9	316	60.0	32	6.1	318	60.3	0	0.0	510	96.8	50.9	49.1	0.4
	2014	548	523	95.4	324	59.1	19	3.5	326	59.5	0	0.0	539	98.4	53.6	46.4	0.4
KN	2012	942	819	86.9	444	47.1	42	4.5	471	50.0	53	5.6	431	45.8	53.3	46.7	1.0
	2013	971	855	88.1	484	49.8	48	4.9	504	51.9	50	5.1	522	53.8	51.4	48.6	1.0
	2014	918	759	82.7	420	45.8	51	5.6	439	47.8	35	3.8	409	44.6	49.5	50.5	1.5
1	2012	985	879	89.2	489	49.6	60	6.1	547	55.5	99	10.1	122	12.4	52.9	47.1	4.7
	2013	911	805	88.4	434	47.6	47	5.2	473	51.9	88	9.7	93	10.2	52.3	47.7	3.3
	2014	992	869	87.6	487	49.1	73	7.4	538	54.2	110	11.1	104	10.5	52.3	47.7	3.2
2	2012	919	821	89.3	458	49.8	75	8.2	689	75.0	105	11.4	117	12.7	52.9	47.1	4.9
	2013	968	878	90.7	480	49.6	64	6.6	719	74.3	130	13.4	82	8.5	52.5	47.5	3.2
	2014	868	753	86.8	430	49.5	64	7.4	615	70.9	118	13.6	82	9.4	51.6	48.4	2.9
3	2012	841	768	91.3	456	54.2	63	7.5	699	83.1	130	15.5	75	8.9	50.7	49.3	1.9
	2013	878	774	88.2	448	51.0	80	9.1	704	80.2	113	12.9	68	7.7	53.1	46.9	3.1
	2014	911	804	88.3	483	53.0	71	7.8	717	78.7	137	15.0	74	8.1	51.0	49.0	1.8
4	2012	812	730	89.9	424	52.2	96	11.8	632	77.8	123	15.1	104	12.8	56.3	43.7	0.9
	2013	779	709	91.0	419	53.8	65	8.3	632	81.1	133	17.1	59	7.6	49.3	50.7	1.2
	2014	826	731	88.5	433	52.4	74	9.0	679	82.2	125	15.1	80	9.7	50.6	49.4	0.4
5	2012	846	766	90.5	389	46.0	85	10.0	651	77.0	139	16.4	92	10.9	51.1	48.9	2.5
	2013	784	704	89.8	369	47.1	81	10.3	607	77.4	131	16.7	59	7.5	55.9	44.1	0.5
	2014	767	672	87.6	417	54.4	66	8.6	649	84.6	145	18.9	65	8.5	49.2	50.8	1.8
PK-5	2012	5,817	5,235	90.0	2,969	51.0	445	7.6	3,994	68.7	649	11.2	1,405	24.2	52.6	47.4	2.5
	2013	5,818	5,241	90.1	2,950	50.7	417	7.2	3,957	68.0	645	11.1	1,393	23.9	52.2	47.8	1.9
	2014	5,830	5,111	87.7	2,994	51.4	418	7.2	3,963	68.0	670	11.5	1,353	23.2	51.0	49.0	1.8

Grade	Year	Enrollment	Economically Disadvantaged		LEP		Special Education		At Risk		TAG		New (to District)		Gender		Retention Rate (%)
			N	%	N	%	N	%	N	%	N	%	N	%	% Male	% Female	
6	2012	718	675	94.0	374	52.1	76	10.6	538	74.9	85	11.8	67	9.3	54.6	45.4	0.4
	2013	723	678	93.8	331	45.8	79	10.9	572	79.1	80	11.1	62	8.6	54.1	45.9	1.1
	2014	686	618	90.1	365	53.2	62	9.0	595	86.7	80	11.7	63	9.2	53.8	46.2	1.5
7	2012	656	589	89.8	235	35.8	73	11.1	404	61.6	65	9.9	82	12.5	52.0	48.0	1.8
	2013	681	630	92.5	304	44.6	66	9.7	500	73.4	76	11.2	51	7.5	53.2	46.8	0.9
	2014	696	627	90.1	304	43.7	71	10.2	603	86.6	56	8.0	70	10.1	53.6	46.4	1.3
8	2012	635	573	90.2	201	31.7	63	9.9	421	66.3	53	8.3	55	8.7	50.4	49.6	1.1
	2013	625	558	89.3	196	31.4	68	10.9	385	61.6	66	10.6	51	8.2	50.7	49.3	1.0
	2014	655	571	87.2	221	33.7	54	8.2	537	82.0	59	9.0	54	8.2	52.7	47.3	1.1
6-8	2012	2,009	1,837	91.4	810	40.3	212	10.6	1,363	67.8	203	10.1	204	10.2	52.4	47.6	1.1
	2013	2,029	1,866	92.0	831	41.0	213	10.5	1,457	71.8	222	10.9	164	8.1	52.7	47.3	1.0
	2014	2,037	1,816	89.2	890	43.7	187	9.2	1,735	85.2	195	9.6	187	9.2	53.4	46.6	1.3

Grade	Year	Enrollment	Economically Disadvantaged		LEP		Special Education		At Risk		TAG		New (to District)		Gender		Retention Rate (%)
			N	%	N	%	N	%	N	%	N	%	N	%	% Male	% Female	
9	2012	529	450	85.1	155	29.3	54	10.2	408	77.1	34	6.4	80	15.1	52.6	47.4	7.8
	2013	508	426	83.9	160	31.5	55	10.8	385	75.8	26	5.1	57	11.2	52.6	47.4	6.1
	2014	559	479	85.7	183	32.7	59	10.6	424	75.8	48	8.6	85	15.2	53.7	46.3	6.4
10	2012	445	364	81.8	98	22.0	40	9.0	327	73.5	42	9.4	43	9.7	52.1	47.9	0.9
	2013	466	376	80.7	126	27.0	50	10.7	366	78.5	34	7.3	35	7.5	51.3	48.7	3.9
	2014	432	378	87.5	127	29.4	45	10.4	355	82.2	27	6.3	30	6.9	52.5	47.5	3.9
11	2012	412	339	82.3	70	17.0	40	9.7	314	76.2	33	8.0	32	7.8	52.4	47.6	1.5
	2013	423	338	79.9	64	15.1	40	9.5	324	76.6	44	10.4	18	4.3	53.7	46.3	3.5
	2014	393	337	85.8	100	25.4	31	7.9	336	85.5	30	7.6	28	7.1	47.8	52.2	0.8
12	2012	384	322	83.9	74	19.3	42	10.9	307	79.9	43	11.2	17	4.4	51.0	49.0	8.6
	2013	414	332	80.2	67	16.2	40	9.7	316	76.3	33	8.0	10	2.4	51.2	48.8	10.1
	2014	380	317	83.4	58	15.3	37	9.7	295	77.6	42	11.1	12	3.2	52.6	47.4	1.8
9-12	2012	1,770	1,475	83.3	397	22.4	176	9.9	1,356	76.6	152	8.6	172	9.7	52.1	47.9	4.7
	2013	1,811	1,472	81.3	417	23.0	185	10.2	1,391	76.8	137	7.6	120	6.6	52.2	47.8	5.9
	2014	1,764	1,511	85.7	468	26.5	172	9.8	1,410	79.9	147	8.3	155	8.8	51.9	48.1	3.6
ALL	2012	9,596	8,547	89.1	4,176	43.5	833	8.7	6,713	70.0	1,004	10.5	1,781	18.6	52.5	47.5	2.6
	2013	9,658	8,579	88.8	4,198	43.5	815	8.4	6,805	70.5	1,004	10.4	1,677	17.4	52.3	47.7	2.5
	2014	9,631	8,438	87.6	4,352	45.2	777	8.1	7,108	73.8	1,012	10.5	1,695	17.6	51.7	48.3	2.0

Grade	Year	Average Daily Membership		Average Daily Attendance				Yearly Transactions			Continuously Enrolled		Stability Rate	
		N	District	N	%	District N	District %	N	%	District %	N	District	%	District
KN	2012	937	13,633	901	96.1	13,086	96.0	196	20.9	19.9	810	11,731	86.4	86.0
	2013	975	14,067	933	95.7	13,411	95.3	168	17.2	20.0	865	12,178	88.7	86.6
	2014	922	13,618	885	96.0	13,058	95.9	155	16.8	19.8	780	11,271	84.6	82.8
1	2012	995	14,026	962	96.7	13,533	96.5	147	14.8	18.3	893	12,292	89.8	87.6
	2013	912	14,140	878	96.3	13,578	96.0	142	15.6	18.7	818	12,528	89.7	88.6
	2014	986	14,262	951	96.4	13,732	96.3	182	18.5	19.2	860	12,149	87.2	85.2
2	2012	914	13,338	885	96.8	12,932	97.0	160	17.5	16.8	805	11,883	88.0	89.1
	2013	961	13,555	929	96.6	13,077	96.5	159	16.5	17.1	875	12,206	91.0	90.0
	2014	874	13,652	847	96.8	13,209	96.8	132	15.1	17.0	774	11,868	88.5	86.9
3	2012	840	12,874	817	97.3	12,508	97.2	128	15.2	15.5	776	11,592	92.4	90.0
	2013	886	12,879	858	96.8	12,466	96.8	126	14.2	15.9	812	11,710	91.7	90.9
	2014	911	13,159	884	97.1	12,763	97.0	135	14.8	17.3	812	11,491	89.1	87.3
4	2012	813	12,493	791	97.3	12,139	97.2	123	15.1	16.6	741	11,218	91.1	89.8
	2013	785	12,406	762	97.0	12,029	97.0	117	14.9	16.5	721	11,339	91.8	91.4
	2014	834	12,543	811	97.2	12,180	97.1	104	12.5	16.3	751	11,075	90.0	88.3
5	2012	843	12,562	820	97.3	12,220	97.3	31	3.7	5.3	767	11,364	91.0	90.5
	2013	781	12,053	760	97.3	11,696	97.0	31	4.0	6.2	715	11,075	91.5	91.9
	2014	759	12,130	739	97.3	11,795	97.2	34	4.5	5.4	688	10,790	90.7	89.0
KN-5	2012	5,343	78,926	5,176	96.9	76,419	96.8	785	14.7	15.5	4,792	70,080	89.7	88.8
	2013	5,301	79,100	5,119	96.6	76,255	96.4	743	14.0	16.0	4,806	71,036	90.7	89.8
	2014	5,286	79,365	5,116	96.8	76,736	96.7	742	14.0	16.0	4,665	68,644	88.2	86.5

Grade	Year	Average Daily Membership		Average Daily Attendance				Yearly Transactions			Continuously Enrolled		Stability Rate	
		N	District	N	%	District N	District %	N	%	District %	N	District	%	District
6	2012	721	10,683	699	97.0	10,315	96.6	115	16.0	17.6	642	9,420	89.1	88.2
	2013	730	11,463	706	96.8	11,062	96.5	132	18.1	21.1	656	10,320	89.9	90.0
	2014	692	10,808	670	96.9	10,413	96.3	123	17.8	20.0	613	9,554	88.6	88.4
7	2012	656	10,204	629	95.9	9,727	95.3	143	21.8	23.8	557	8,576	84.9	84.0
	2013	681	10,542	657	96.5	10,116	96.0	140	20.6	24.5	614	9,357	90.1	88.8
	2014	696	11,195	668	95.9	10,729	95.8	124	17.8	22.1	609	9,852	87.5	88.0
8	2012	641	10,369	613	95.5	9,838	94.9	59	9.2	15.5	550	8,711	85.8	84.0
	2013	619	9,955	594	96.1	9,486	95.3	87	14.1	17.6	544	8,664	87.9	87.0
	2014	652	10,449	624	95.8	9,970	95.4	45	6.9	13.1	577	9,097	88.5	87.1
6-8	2012	2,018	31,256	1,941	96.2	29,880	95.6	317	15.7	18.9	1,749	26,707	86.7	85.4
	2013	2,030	31,960	1,958	96.5	30,665	96.0	359	17.7	21.1	1,814	28,341	89.4	88.7
	2014	2,039	32,451	1,962	96.2	31,112	95.9	292	14.3	18.5	1,799	28,503	88.2	87.8

Grade	Year	Average Daily Membership		Average Daily Attendance				Yearly Transactions			Continuously Enrolled		Stability Rate	
		N	District	N	%	District N	District %	N	%	District %	N	District	%	District
9	2012	539	10,922	506	93.9	10,196	93.3	150	27.9	27.8	418	8,726	77.6	79.9
	2013	522	11,153	491	94.0	10,499	94.1	142	27.2	28.3	426	9,388	81.6	84.2
	2014	578	10,850	546	94.5	10,242	94.4	168	29.1	28.4	464	9,091	80.3	83.8
10	2012	458	9,007	432	94.3	8,431	93.6	78	17.0	20.6	390	7,332	85.2	81.4
	2013	480	9,331	453	94.3	8,812	94.4	86	17.9	20.5	417	8,042	86.9	86.2
	2014	446	9,898	423	94.9	9,367	94.6	80	18.0	20.3	372	8,628	83.5	87.2
11	2012	431	8,913	402	93.3	8,306	93.2	62	14.4	15.9	347	7,319	80.5	82.1
	2013	424	8,457	399	94.3	7,949	94.0	58	13.7	18.9	372	7,295	87.8	86.3
	2014	409	8,467	388	94.7	8,005	94.5	52	12.7	18.1	360	7,476	87.9	88.3
12	2012	385	8,178	359	93.2	7,571	92.6	26	6.8	12.6	327	6,742	84.9	82.4
	2013	413	8,199	390	94.4	7,661	93.4	41	9.9	14.9	382	7,269	92.5	88.7
	2014	389	7,886	369	94.9	7,407	93.9	29	7.5	15.2	355	7,027	91.4	89.1
9-12	2012	1,813	37,021	1,699	93.7	34,504	93.2	316	17.4	19.8	1,482	30,119	81.8	81.4
	2013	1,839	37,140	1,733	94.2	34,922	94.0	327	17.8	21.2	1,597	31,994	86.8	86.1
	2014	1,821	37,101	1,725	94.7	35,021	94.4	329	18.1	21.1	1,551	32,222	85.2	86.8

**Teachers: 591**

**DISTRIBUTIONS**

Ethnicity/Race	Number	Percentage
African American	159	26.9
Hispanic	159	26.9
White	249	42.1
Multiple	10	1.7
Other	14	2.4

Gender	Number	Percentage
Female	436	73.8
Male	155	26.2

**ATTENDANCE / RETENTION**

	Average Absences	Retention Rate
2011-12	6.0	—
2012-13	7.3	75.7
2013-14	7.1	71.3

**YEARS EXPERIENCE**

Years	Number	Percentage
Beginning (0)	80	13.5
1	43	7.3
2	26	4.4
3	29	4.9
4	25	4.2
5	27	4.6
1-3	98	16.6
More than 3	413	69.9
1 - 5	150	25.4
6 - 10	114	19.3
11 - 20	150	25.4
More than 20	97	16.4

**PERCENTAGE SATISFACTORY (Levels 2 or 3)**

Grade	Year	White	African Amer	Hispanic	Econ Disadv	Special Educ	LEP	At Risk	Migrant	Male	Female	All	District	Number Tested (All Students)
3	2012	91.1	55.6	68.2	63.6	32.0	63.0	54.0		63.1	72.1	67.6	63.6	481
	2013	91.3	63.2	69.4	66.0	39.1	62.1	54.0		69.0	72.5	70.7	67.8	474
	2014	90.6	56.0	68.9	67.3	44.4	61.8	52.6		68.8	70.8	69.7	61.7	479
4	2012	88.7	54.1	72.6	66.3	43.2	67.3	55.9		65.4	74.1	69.1	64.3	515
	2013	92.0	54.7	68.3	63.4	42.9	68.7	63.8		65.4	69.2	67.3	62.3	441
	2014	84.8	55.3	67.0	62.1	46.4	61.0	48.9		67.5	65.1	66.3	59.4	480
5	2012	94.8	56.6	69.8	65.4	35.7	59.9	53.9		67.5	70.1	68.8	68.0	567
	2013	98.1	77.8	86.3	83.4	73.0	80.5	77.0	*	83.4	87.6	85.4	81.5	560
	2014	92.7	78.1	78.6	77.5	45.8	75.7	69.9		80.3	80.2	80.2	78.5	470
3-5	2012	91.5	55.5	70.2	65.2	37.8	63.2	54.5		65.4	71.9	68.5	65.5	1,563
	2013	93.6	65.2	76.2	71.9	55.6	74.1	65.7	*	73.7	77.0	75.3	71.1	1,475
	2014	89.3	62.3	71.8	69.0	45.6	67.9	57.6		72.1	71.9	72.0	66.7	1,429

NUMBER TESTED IN GRADES 3-5													
2012	176	339	974	1,346	90	467	842		819	744	1,563	22,173	
2013	173	339	902	1,244	81	370	668	1	763	712	1,475	21,619	
2014	206	326	837	1,165	79	324	828		717	712	1,429	21,304	



**PERCENTAGE SATISFACTORY (Levels 2 or 3)**

Grade	Year	White	African Amer	Hispanic	Econ Disadv	Special Educ	LEP	At Risk	Migrant	Male	Female	All	District	Number Tested (All Students)
6	2012	81.8	60.9	61.5	61.0	20.0	53.7	53.0		62.1	62.1	62.1	63.5	675
	2013	82.6	52.7	51.5	51.4	14.8	39.3	39.6		53.4	51.9	52.7	57.7	676
	2014	75.0	57.4	61.6	60.8	33.3	53.6	54.1	*	54.8	68.3	61.1	63.1	645
7	2012	92.6	63.5	68.0	67.4	31.0	44.7	51.2		61.7	75.8	68.7	67.5	613
	2013	76.2	59.0	68.2	66.0	30.4	61.7	58.3		64.1	69.7	66.8	67.3	644
	2014	76.0	53.7	58.4	57.2	13.6	44.1	47.5		54.5	62.1	58.2	60.5	629
8	2012	91.7	68.7	70.1	69.8	46.4	54.1	57.5		71.4	69.7	70.6	71.3	608
	2013	96.6	84.0	83.7	83.6	54.2	67.7	75.0		77.7	90.2	84.0	82.7	587
	2014	91.3	83.3	86.3	85.1	66.7	70.6	78.5		84.0	86.7	85.3	81.5	618
6-8	2012	89.0	64.0	66.4	65.8	31.5	51.2	53.8		64.9	69.1	66.9	67.4	1,896
	2013	86.3	62.8	67.2	65.9	32.4	53.9	56.1		64.2	70.2	67.1	68.6	1,907
	2014	80.6	65.1	68.5	67.6	34.5	54.4	59.0	*	64.1	72.3	68.0	68.2	1,892

NUMBER TESTED IN GRADES 6-8													
2012	73	278	1,491	1,706	92	765	1,157			983	913	1,896	29,211
2013	73	304	1,470	1,732	74	798	1,137			989	918	1,907	29,692
2014	72	298	1,476	1,646	58	836	1,391	1		986	906	1,892	30,015

**NUMBER UNSATISFACTORY (Level 1)**

Grade	Year	White	African Amer	Hispanic	Econ Disadv	Special Educ	LEP	At Risk	Migrant	Male	Female	All	District	Number Tested (All Students)
3	2012	5	48	93	151	17	44	131		89	67	156	2,466	481
	2013	6	46	78	129	14	25	114		76	63	139	2,181	474
	2014	8	51	80	129	15	29	120		79	66	145	2,649	479
4	2012	7	50	88	148	21	51	109		102	57	159	2,529	515
	2013	4	48	85	140	12	31	50		75	69	144	2,581	441
	2014	10	51	91	145	15	39	141		75	87	162	2,858	480
5	2012	3	53	109	170	18	77	143		92	85	177	2,665	567
	2013	1	24	52	80	10	40	65	*	50	32	82	1,484	560
	2014	4	21	65	87	13	36	90		46	47	93	1,582	470
3-5	2012	15	151	290	469	56	172	383		283	209	492	7,660	1,563
	2013	11	118	215	349	36	96	229	*	201	164	365	6,246	1,475
	2014	22	123	236	361	43	104	351		200	200	400	7,089	1,429

NUMBER TESTED IN GRADES 3-5													
2012	176	339	974	1,346	90	467	842		819	744	1,563	22,173	
2013	173	339	902	1,244	81	370	668	1	763	712	1,475	21,619	
2014	206	326	837	1,165	79	324	828		717	712	1,429	21,304	

**NUMBER UNSATISFACTORY (Level 1)**

Grade	Year	White	African Amer	Hispanic	Econ Disadv	Special Educ	LEP	At Risk	Migrant	Male	Female	All	District	Number Tested (All Students)
6	2012	4	43	202	245	28	164	215		138	118	256	3,673	675
	2013	4	53	251	306	23	196	253		167	153	320	4,523	676
	2014	6	43	196	222	14	162	228	*	156	95	251	3,679	645
7	2012	2	31	156	176	20	120	167		119	73	192	3,070	613
	2013	5	48	155	201	16	118	166		122	92	214	3,215	644
	2014	6	44	204	232	19	160	254		147	116	263	4,075	629
8	2012	2	26	143	162	15	89	152		88	91	179	2,786	608
	2013	1	12	76	84	11	54	80		65	29	94	1,586	587
	2014	2	17	65	80	5	59	88		51	40	91	1,797	618
6-8	2012	8	100	501	583	63	373	534		345	282	627	9,529	1,896
	2013	10	113	482	591	50	368	499		354	274	628	9,324	1,907
	2014	14	104	465	534	38	381	570	*	354	251	605	9,551	1,892

NUMBER TESTED IN GRADES 6-8													
2012	73	278	1,491	1,706	92	765	1,157		983	913	1,896	29,211	
2013	73	304	1,470	1,732	74	798	1,137		989	918	1,907	29,692	
2014	72	298	1,476	1,646	58	836	1,391	1	986	906	1,892	30,015	

PERCENTAGE ADVANCED (Level 3)

Grade	Year	White	African Amer	Hispanic	Econ Disadv	Special Educ	LEP	At Risk	Migrant	Male	Female	All	District	Number Tested (All Students)
3	2012	51.8	5.6	14.7	12.0	12.0	15.1	8.1		14.9	18.8	16.8	12.6	481
	2013	44.9	8.0	14.5	10.3	8.7	10.6	4.0		15.9	18.3	17.1	13.6	474
	2014	31.8	12.1	8.9	10.1	0.0	3.9	3.2		13.8	14.6	14.2	9.6	479
4	2012	43.5	11.0	7.2	8.7	5.4	5.1	4.5		12.9	12.3	12.6	11.2	515
	2013	44.0	7.5	14.9	12.5	14.3	13.1	12.3		16.6	17.0	16.8	13.5	441
	2014	36.4	13.2	13.0	13.1	7.1	11.0	5.1		14.3	19.3	16.9	12.0	480
5	2012	37.9	9.8	8.0	8.9	7.1	4.2	3.9		10.6	13.0	11.8	11.1	567
	2013	50.0	8.3	13.5	12.4	16.2	6.8	7.1	*	15.0	17.8	16.3	13.3	560
	2014	32.7	6.3	9.9	10.6	0.0	8.1	5.0		11.2	13.1	12.1	11.5	470
3-5	2012	44.3	8.8	9.8	9.8	7.8	7.3	5.5		12.7	14.7	13.6	11.6	1,563
	2013	46.2	8.0	14.2	11.8	13.6	9.2	7.0	*	15.7	17.7	16.7	13.5	1,475
	2014	33.5	10.7	10.6	11.2	2.5	8.0	4.5		13.1	15.7	14.4	11.1	1,429

NUMBER TESTED IN GRADE 3-5													
2012	176	339	974	1,346	90	467	842			819	744	1,563	22,173
2013	173	339	902	1,244	81	370	668	1		763	712	1,475	21,619
2014	206	326	837	1,165	79	324	828			717	712	1,429	21,304

PERCENTAGE ADVANCED (Level 3)

Grade	Year	White	African Amer	Hispanic	Econ Disadv	Special Educ	LEP	At Risk	Migrant	Male	Female	All	District	Number Tested (All Students)
6	2012	31.8	5.5	5.3	6.4	0.0	3.4	2.6		4.9	8.0	6.4	8.3	675
	2013	17.4	3.6	4.8	4.3	0.0	1.9	1.4		4.2	5.7	4.9	11.3	676
	2014	8.3	5.0	3.3	3.9	0.0	2.3	1.6	*	3.8	4.3	4.0	7.1	645
7	2012	25.9	8.2	5.5	6.1	0.0	1.8	2.3		6.4	7.6	7.0	10.3	613
	2013	14.3	4.3	6.8	7.1	0.0	3.6	2.3		5.9	7.9	6.8	8.7	644
	2014	20.0	4.2	3.7	4.1	0.0	0.7	1.9		4.6	4.6	4.6	10.0	629
8	2012	12.5	7.2	7.1	7.3	0.0	1.0	2.8		7.5	6.7	7.1	9.9	608
	2013	27.6	16.0	11.4	12.5	0.0	3.6	6.3		10.7	15.5	13.1	15.5	587
	2014	21.7	5.9	10.5	10.4	0.0	2.0	3.2		10.4	10.7	10.5	13.1	618
6-8	2012	23.3	6.8	6.0	6.6	0.0	2.4	2.6		6.2	7.4	6.8	9.5	1,896
	2013	20.5	6.9	7.6	7.7	0.0	2.9	3.1		6.7	9.6	8.1	11.7	1,907
	2014	16.7	5.0	5.8	6.1	0.0	1.7	2.2	*	6.2	6.5	6.3	10.1	1,892

NUMBER TESTED IN GRADE 6-8													
2012	73	278	1,491	1,706	92	765	1,157			983	913	1,896	29,211
2013	73	304	1,470	1,732	74	798	1,137			989	918	1,907	29,692
2014	72	298	1,476	1,646	58	836	1,391	1		986	906	1,892	30,015

**AVERAGE PERCENTAGE OF ITEMS CORRECT BY REPORTING CATEGORY**

Grade	Year	REPORTING CATEGORY		
		1. Understanding Across Genres (GR 3-5) 1. Understanding/Analysis Across Genres (GR 6-8)	2. Understanding/Analysis of Literary Texts	3. Understanding/Analysis of Informational Texts
3	2012	64.7	56.7	62.4
	2013	65.7	60.0	61.7
	2014	68.6	64.4	59.8
4	2012	62.8	62.2	59.8
	2013	68.1	61.4	61.8
	2014	63.1	62.1	61.4
5	2012	63.2	59.1	67.8
	2013	70.9	68.7	69.4
	2014	68.0	64.1	67.2
3-5	2012	63.5	59.4	63.5
	2013	68.4	63.7	64.6
	2014	66.6	63.5	62.8

**AVERAGE PERCENTAGE OF ITEMS CORRECT BY REPORTING CATEGORY**

Grade	Year	REPORTING CATEGORY		
		1. Understanding Across Genres (GR 3-5) 1. Understanding/Analysis Across Genres (GR 6-8)	2. Understanding/Analysis of Literary Texts	3. Understanding/Analysis of Informational Texts
6	2012	66.7	61.5	56.7
	2013	58.4	56.6	55.0
	2014	57.8	56.1	57.9
7	2012	67.1	57.7	60.7
	2013	58.4	57.0	65.8
	2014	58.7	55.0	52.4
8	2012	65.1	57.1	60.0
	2013	71.3	68.8	62.3
	2014	68.0	64.6	62.4
6-8	2012	66.3	58.9	59.1
	2013	62.4	60.5	60.9
	2014	61.4	58.5	57.6

## PERCENTAGE SATISFACTORY (Levels 2 and 3)

Test	Year	White	African Amer	Hispanic	Econ Disadv	Special Educ	LEP	At Risk	Migrant	Male	Female	All	District
ENGLISH I	2012												
	2013												
	2014	71.4	39.5	50.7	48.3	21.7	29.6	38.5	*	46.1	52.0	49.0	50.9
Tests Taken	2012												
	2013												
	2014	28	114	604	578	46	277	597	4	399	369	768	13,789
ENGLISH II	2012												
	2013												
	2014	56.3	41.9	48.0	46.5	13.0	22.7	37.7	*	46.1	48.6	47.3	54.8
Tests Taken	2012												
	2013												
	2014	16	86	394	400	23	150	408	4	271	245	516	10,943



## NUMBER UNSATISFACTORY (Level 1)

Test	Year	White	African Amer	Hispanic	Econ Disadv	Special Educ	LEP	At Risk	Migrant	Male	Female	All	District
ENGLISH I	2012												
	2013												
	2014	8	69	298	299	36	195	367	*	215	177	392	6,774
Tests Taken	2012												
	2013												
	2014	28	114	604	578	46	277	597	4	399	369	768	13,789
ENGLISH II	2012												
	2013												
	2014	7	50	205	214	20	116	254	*	146	126	272	4,948
Tests Taken	2012												
	2013												
	2014	16	86	394	400	23	150	408	4	271	245	516	10,943

## PERCENTAGE ADVANCED (Level 3)

Test	Year	White	African Amer	Hispanic	Econ Disadv	Special Educ	LEP	At Risk	Migrant	Male	Female	All	District
ENGLISH I	2012												
	2013												
	2014	3.6	0.0	0.7	0.3	0.0	0.0	0.0	*	0.3	1.1	0.7	3.2
Tests Taken	2012												
	2013												
	2014	28	114	604	578	46	277	597	4	399	369	768	13,789
ENGLISH II	2012												
	2013												
	2014	6.3	0.0	0.0	0.0	0.0	0.0	0.0	*	0.4	0.0	0.2	2.7
Tests Taken	2012												
	2013												
	2014	16	86	394	400	23	150	408	4	271	245	516	10,943

## AVERAGE PERCENTAGE OF ITEMS CORRECT BY REPORTING CATEGORY

ENGLISH I	1. Understanding & Analysis Across Genres	1. Average Rating Short Answer #1 <sup>1</sup>	1. Average Rating Short Answer #2 <sup>1</sup>	2. Understanding & Analysis of Literary Texts	3. Understanding & Analysis of Informational Texts	4. Expository Composition <sup>2</sup>	5. Revision	6. Editing
2012								
2013								
2014	59.0	1.1	1.2	54.1	55.8	3.9	64.3	49.7

ENGLISH II	1. Understanding & Analysis Across Genres	1. Average Rating Short Answer #1 <sup>1</sup>	1. Average Rating Short Answer #2 <sup>1</sup>	2. Understanding & Analysis of Literary Texts	3. Understanding & Analysis of Informational Texts	4. Persuasive Composition <sup>2</sup>	5. Revision	6. Editing
2012								
2013								
2014	70.1	1.0	1.2	48.3	61.8	3.9	61.3	64.2

<sup>1</sup>Short answer rating scale: 0=Insufficient; 1=Partially Sufficient; 2=Sufficient; 3=Exemplary

<sup>2</sup>Average score points (0-8). A composition is rated twice on a scale of 1 to 4, and the ratings are summed to determine score points for the composition. Score point scale: 0=Nonscorable; 2=Very Limited; 3=between Very Limited and Basic; 4=Basic; 5=between Basic and Satisfactory; 6=Satisfactory; 7=between Satisfactory and Accomplished; 8=Accomplished

**PERCENTAGE SATISFACTORY (Levels 2 or 3)**

Grade	Year	White	African Amer	Hispanic	Econ Disadv	Special Educ	LEP	At Risk	Migrant	Male	Female	All	District	Number Tested (All Students)
4	2012	83.9	47.7	64.6	58.1	28.9	53.5	42.2		56.8	68.2	61.6	60.6	474
	2013	82.0	57.7	74.6	68.9	31.8	70.1	64.9		66.4	76.1	71.3	63.9	436
	2014	81.3	62.4	72.4	67.5	42.9	72.9	57.3		67.1	75.1	71.2	61.9	476

NUMBER TESTED IN GRADE 4													
2012	62	109	280	399	38	114	206		273	201	474	7,039	
2013	50	104	264	376	22	97	134		214	222	436	6,771	
2014	64	117	272	379	28	96	274		231	245	476	7,022	

**PERCENTAGE SATISFACTORY (Levels 2 or 3)**

Grade	Year	White	African Amer	Hispanic	Econ Disadv	Special Educ	LEP	At Risk	Migrant	Male	Female	All	District	Number Tested (All Students)
7	2012	75.0	51.8	56.1	56.2	7.4	31.9	36.4		49.0	64.5	56.7	59.2	609
	2013	68.2	51.3	53.5	53.7	4.8	42.3	39.6		48.4	59.9	53.8	57.1	639
	2014	68.0	50.5	53.8	53.3	25.0	38.2	43.1		43.1	64.5	53.7	54.6	630

NUMBER TESTED IN GRADE 7													
2012	28	83	483	541	27	216	341		308	301	609	9,456	
2013	22	115	484	587	21	307	394		337	302	639	9,785	
2014	25	97	489	542	20	283	483		320	310	630	10,339	

**NUMBER UNSATISFACTORY (Level 1)**

Grade	Year	White	African Amer	Hispanic	Econ Disadv	Special Educ	LEP	At Risk	Migrant	Male	Female	All	District	Number Tested (All Students)
4	2012	10	57	99	167	27	53	119		118	64	182	2,772	474
	2013	9	44	67	117	15	29	47		72	53	125	2,442	436
	2014	12	44	75	123	16	26	117		76	61	137	2,675	476

NUMBER TESTED IN GRADE 4													
2012	62	109	280	399	38	114	206		273	201	474	7,039	
2013	50	104	264	376	22	97	134		214	222	436	6,771	
2014	64	117	272	379	28	96	274		231	245	476	7,022	

**NUMBER UNSATISFACTORY (Level 1)**

Grade	Year	White	African Amer	Hispanic	Econ Disadv	Special Educ	LEP	At Risk	Migrant	Male	Female	All	District	Number Tested (All Students)
7	2012	7	40	212	237	25	147	217		157	107	264	3,859	609
	2013	7	56	225	272	20	177	238		174	121	295	4,198	639
	2014	8	48	226	253	15	175	275		182	110	292	4,690	630

NUMBER TESTED IN GRADE 7													
2012	28	83	483	541	27	216	341		308	301	609	9,456	
2013	22	115	484	587	21	307	394		337	302	639	9,785	
2014	25	97	489	542	20	283	483		320	310	630	10,339	

**PERCENTAGE ADVANCED (Level 3)**

Grade	Year	White	African Amer	Hispanic	Econ Disadv	Special Educ	LEP	At Risk	Migrant	Male	Female	All	District	Number Tested (All Students)
4	2012	16.1	3.7	3.2	2.8	2.6	1.8	1.9		5.5	4.5	5.1	5.1	474
	2013	26.0	2.9	4.2	3.7	4.5	7.2	5.2		5.1	7.7	6.4	4.7	436
	2014	17.2	6.0	5.1	4.5	7.1	4.2	1.8		4.3	10.6	7.6	3.7	476

NUMBER TESTED IN GRADE 4													
2012	62	109	280	399	38	114	206		273	201	474	7,039	
2013	50	104	264	376	22	97	134		214	222	436	6,771	
2014	64	117	272	379	28	96	274		231	245	476	7,022	



**PERCENTAGE ADVANCED (Level 3)**

Grade	Year	White	African Amer	Hispanic	Econ Disadv	Special Educ	LEP	At Risk	Migrant	Male	Female	All	District	Number Tested (All Students)
7	2012	0.0	0.0	0.4	0.4	0.0	0.0	0.0		0.0	0.7	0.3	3.4	609
	2013	4.5	0.0	1.2	1.4	0.0	0.7	0.5		0.9	1.7	1.3	1.5	639
	2014	8.0	0.0	0.6	0.6	0.0	0.0	0.0		0.3	1.3	0.8	3.0	630

NUMBER TESTED IN GRADE 7													
2012	28	83	483	541	27	216	341		308	301	609	9,456	
2013	22	115	484	587	21	307	394		337	302	639	9,785	
2014	25	97	489	542	20	283	483		320	310	630	10,339	

**AVERAGE PERCENTAGE OF ITEMS CORRECT BY REPORTING CATEGORY**

Grade	Year	REPORTING CATEGORY			
		1. Composition <sup>1</sup> GR 4: Personal Narrative GR 7: Expository	1. Composition <sup>1</sup> GR 4: Expository GR 7: Personal Narrative	2. Revision	3. Editing
4	2012	2.0	1.9	62.9	57.8
	2013	4.4	3.9	59.9	65.7
	2014	4.5	4.2	67.6	61.5
7	2012	1.8	2.2	62.3	56.2
	2013	3.9	4.4	61.8	59.2
	2014	3.8	4.4	60.0	54.2

<sup>1</sup>Average score points (range 0-8). A STAAR composition is rated twice on a scale of 1 to 4, and the ratings are summed to determine score points for the composition. Score point scale: 0=Non-scorable; 2=Very Limited; 3=between Very Limited and Basic; 4=Basic; 5=between Basic and Satisfactory; 6=Satisfactory; 7=between Satisfactory and Accomplished; 8=Accomplished

**PERCENTAGE SATISFACTORY (Levels 2 or 3)**

Grade	Year	White	African Amer	Hispanic	Econ Disadv	Special Educ	LEP	At Risk	Migrant	Male	Female	All	District	Number Tested (All Students)
3	2012	83.9	44.3	60.3	57.7	14.8	61.4	52.2		58.4	60.8	59.6	55.4	713
	2013	81.2	42.4	60.4	55.9	28.6	61.6	52.8		63.6	55.0	59.4	57.5	833
	2014	81.6	53.4	70.6	69.0	21.2	73.0	65.0		68.3	71.0	69.7	59.3	860
4	2012	75.8	37.3	64.0	58.7	29.8	62.6	55.7		59.5	63.2	61.1	53.0	759
	2013	77.6	43.4	61.9	58.9	26.9	59.5	58.4		61.5	59.4	60.4	57.5	733
	2014	84.6	48.7	62.0	59.2	52.4	62.1	54.3		64.9	59.2	62.1	59.0	780
5	2012	81.0	59.3	67.2	65.7	32.4	64.0	58.4		68.5	65.8	67.1	64.1	782
	2013	96.2	75.0	86.5	84.7	64.1	86.3	82.4	*	84.5	87.3	85.8	81.7	730
	2014	92.6	77.9	86.6	84.8	46.2	85.5	82.7		85.7	86.0	85.9	81.4	707
3-5	2012	80.1	47.3	63.9	60.8	26.9	62.8	55.5		62.1	63.4	62.7	57.5	2,254
	2013	84.8	53.1	69.2	66.0	42.0	68.7	63.4	*	70.0	66.1	68.1	65.3	2,296
	2014	85.4	58.9	72.7	70.5	40.6	73.4	66.9		72.3	71.7	72.0	66.3	2,347

NUMBER TESTED IN GRADES 3-5													
2012	176	334	1,689	2,007	108	1,152	1,484			1,165	1,089	2,254	35,372
2013	171	339	1,733	2,040	100	1,171	1,484	1		1,181	1,115	2,296	34,686
2014	206	326	1,767	2,034	101	1,235	1,739			1,166	1,181	2,347	35,222

**PERCENTAGE SATISFACTORY (Levels 2 or 3)**

Grade	Year	White	African Amer	Hispanic	Econ Disadv	Special Educ	LEP	At Risk	Migrant	Male	Female	All	District	Number Tested (All Students)
6	2012	60.9	53.6	72.2	69.9	19.4	72.1	63.0		73.0	64.6	69.1	66.4	661
	2013	72.7	48.7	62.3	60.7	17.1	56.9	52.3		61.9	58.9	60.5	60.6	656
	2014	69.6	53.0	62.4	61.5	28.6	57.4	54.1		58.0	64.3	60.9	64.3	627
7	2012	85.2	43.5	63.8	61.8	30.3	53.3	47.6		61.7	62.5	62.1	59.9	593
	2013	66.7	40.2	64.6	60.7	15.4	60.5	51.9		61.4	59.5	60.5	59.9	635
	2014	50.0	41.1	49.9	47.8	22.7	45.6	39.5		51.4	46.3	48.9	55.1	607
8	2012	69.2	33.3	52.3	49.7	29.6	42.1	41.7		56.5	43.7	50.1	51.9	415
	2013	94.1	73.3	76.9	77.2	70.6	74.8	70.5		76.5	77.8	77.1	74.0	407
	2014	73.3	63.4	79.1	78.0	61.5	76.2	71.5		75.4	77.2	76.3	73.2	489
6-8	2012	73.0	45.3	64.2	62.1	26.0	60.4	52.3		65.1	58.5	61.9	60.3	1,669
	2013	76.7	50.3	66.7	64.4	28.2	61.5	56.7		65.0	64.0	64.5	63.7	1,698
	2014	62.5	52.4	62.7	61.4	33.9	57.6	53.9		60.5	61.6	61.1	63.3	1,723

NUMBER TESTED IN GRADES 6-8													
2012	63	258	1,315	1,508	96	677	1,059			865	804	1,669	26,044
2013	60	290	1,304	1,547	78	725	1,059			888	810	1,698	26,676
2014	64	288	1,336	1,503	56	766	1,311			892	831	1,723	27,304

**NUMBER UNSATISFACTORY (Level 1)**

Grade	Year	White	African Amer	Hispanic	Econ Disadv	Special Educ	LEP	At Risk	Migrant	Male	Female	All	District	Number Tested (All Students)
3	2012	9	59	211	272	23	135	246		147	141	288	5,287	713
	2013	13	72	244	320	25	163	285		155	183	338	5,086	833
	2014	16	54	188	235	26	122	219		139	122	261	4,988	860
4	2012	15	69	206	277	33	148	217		171	124	295	5,511	759
	2013	11	60	214	275	19	152	179		137	153	290	4,919	733
	2014	10	59	221	272	20	151	263		135	161	296	4,803	780
5	2012	11	48	192	238	23	146	219		123	134	257	4,228	782
	2013	2	27	75	99	14	51	79	*	62	42	104	2,035	730
	2014	4	21	73	93	14	56	93		49	51	100	2,088	707
3-5	2012	35	176	609	787	79	429	682		441	399	840	15,026	2,254
	2013	26	159	533	694	58	366	543	*	354	378	732	12,040	2,296
	2014	30	134	482	600	60	329	575		323	334	657	11,879	2,347

NUMBER TESTED IN GRADES 3-5													
2012	176	334	1,689	2,007	108	1,152	1,484			1,165	1,089	2,254	35,372
2013	171	339	1,733	2,040	100	1,171	1,484	1		1,181	1,115	2,296	34,686
2014	206	326	1,767	2,034	101	1,235	1,739			1,166	1,181	2,347	35,222

**NUMBER UNSATISFACTORY (Level 1)**

Grade	Year	White	African Amer	Hispanic	Econ Disadv	Special Educ	LEP	At Risk	Migrant	Male	Female	All	District	Number Tested (All Students)
6	2012	9	51	143	186	29	95	165		96	108	204	3,327	661
	2013	6	58	189	240	29	129	193		135	124	259	4,133	656
	2014	7	47	186	212	15	141	221		140	105	245	3,478	627
7	2012	4	48	170	199	23	92	172		115	110	225	3,705	593
	2013	7	70	171	229	22	118	189		129	122	251	3,851	635
	2014	13	56	234	274	17	143	279		151	159	310	4,536	607
8	2012	4	42	158	186	19	81	175		91	116	207	3,319	415
	2013	1	16	74	81	5	32	77		47	46	93	1,709	407
	2014	4	34	78	94	5	41	105		61	55	116	2,001	489
6-8	2012	17	141	471	571	71	268	512		302	334	636	10,351	1,669
	2013	14	144	434	550	56	279	459		311	292	603	9,693	1,698
	2014	24	137	498	580	37	325	605		352	319	671	10,015	1,723

NUMBER TESTED IN GRADES 6-8													
2012	63	258	1,315	1,508	96	677	1,059			865	804	1,669	26,044
2013	60	290	1,304	1,547	78	725	1,059			888	810	1,698	26,676
2014	64	288	1,336	1,503	56	766	1,311			892	831	1,723	27,304

PERCENTAGE ADVANCED (Level 3)

Grade	Year	White	African Amer	Hispanic	Econ Disadv	Special Educ	LEP	At Risk	Migrant	Male	Female	All	District	Number Tested (All Students)
3	2012	32.1	5.7	9.4	8.6	3.7	9.7	7.0		13.0	8.3	10.7	7.9	713
	2013	29.0	6.4	7.8	7.0	2.9	7.5	6.1		11.0	7.9	9.5	9.1	833
	2014	21.8	7.8	10.8	10.6	0.0	10.6	8.0		12.8	10.7	11.7	10.4	860
4	2012	11.3	5.5	7.0	7.0	0.0	6.1	4.9		7.1	7.7	7.4	6.1	759
	2013	34.7	5.7	10.7	10.0	7.7	9.6	9.3		12.6	10.3	11.5	9.5	733
	2014	33.8	13.0	12.2	12.1	9.5	11.3	8.5		16.1	13.4	14.7	14.0	780
5	2012	34.5	6.8	10.9	10.2	5.9	9.9	7.6		10.8	13.5	12.1	10.4	782
	2013	37.7	8.3	15.0	13.3	7.7	14.0	12.0	*	15.5	16.0	15.8	12.8	730
	2014	33.3	11.6	18.1	18.7	3.8	18.4	14.9		19.3	18.9	19.1	15.7	707
3-5	2012	25.6	6.0	9.1	8.6	2.8	8.5	6.5		10.1	10.0	10.1	8.1	2,254
	2013	33.3	6.8	11.0	10.0	6.0	10.2	8.8	*	13.0	11.1	12.1	10.4	2,296
	2014	28.6	10.7	13.5	13.5	5.0	13.3	10.3		15.8	14.1	15.0	13.3	2,347

NUMBER TESTED IN GRADE 3-5													
2012	176	334	1,689	2,007	108	1,152	1,532			1,165	1,089	2,254	35,372
2013	171	339	1,733	2,040	100	1,171	1,484	1		1,181	1,115	2,296	34,686
2014	206	326	1,767	2,034	101	1,235	1,739			1,166	1,181	2,347	35,222

PERCENTAGE ADVANCED (Level 3)

Grade	Year	White	African Amer	Hispanic	Econ Disadv	Special Educ	LEP	At Risk	Migrant	Male	Female	All	District	Number Tested (All Students)
6	2012	17.4	3.6	8.0	8.3	0.0	7.9	5.8		9.6	5.9	7.9	9.8	661
	2013	13.6	2.7	4.2	4.1	2.9	2.0	1.5		4.5	4.0	4.3	8.5	656
	2014	8.7	1.0	6.3	5.5	4.8	5.4	4.4		4.2	7.1	5.6	9.6	627
7	2012	14.8	0.0	2.6	1.9	0.0	2.0	1.2		5.0	0.7	2.9	6.3	593
	2013	4.8	0.0	4.3	3.6	0.0	4.0	2.8		4.8	2.0	3.5	4.8	635
	2014	11.5	3.2	4.3	4.0	0.0	3.4	2.6		4.5	4.4	4.4	6.7	607
8	2012	0.0	0.0	0.0	0.0	0.0	0.0	0.0		0.0	0.0	0.0	0.4	415
	2013	5.9	0.0	0.0	0.3	0.0	0.0	0.0		0.0	0.5	0.2	0.9	407
	2014	0.0	0.0	0.8	0.7	0.0	0.0	0.0		0.0	1.2	0.6	1.0	489
6-8	2012	12.7	1.6	4.0	4.0	0.0	4.6	2.8		5.7	2.5	4.1	6.1	1,669
	2013	8.3	1.0	3.2	3.0	1.3	2.5	1.6		3.6	2.3	3.0	5.3	1,698
	2014	7.8	1.4	4.0	3.6	1.8	3.5	2.5		3.1	4.5	3.8	6.2	1,723

NUMBER TESTED IN GRADE 6-8													
2012	63	258	1,315	1,508	96	677	1,074		865	804	1,669	26,044	
2013	60	290	1,304	1,547	78	725	1,059		888	810	1,698	26,676	
2014	64	288	1,336	1,503	56	766	1,311		892	831	1,723	27,304	



## AVERAGE PERCENTAGE OF ITEMS CORRECT BY REPORTING CATEGORY

Grade	Year	REPORTING CATEGORY				
		1. Numbers, Operations, and Quantitative Reasoning	2. Patterns, Relationships, and Algebraic Reasoning	3. Geometry and Spatial Reasoning	4. Measurement	5. Probability and Statistics
3	2012	58.5	60.8	69.8	59.0	50.7
	2013	59.3	58.1	68.5	67.2	63.3
	2014	69.3	67.0	64.3	68.2	63.2
4	2012	63.0	62.5	63.8	56.2	57.6
	2013	65.5	64.7	69.1	61.5	52.7
	2014	63.9	68.9	70.0	60.1	60.8
5	2012	62.5	60.0	64.0	57.3	62.3
	2013	70.3	66.2	68.9	64.8	71.8
	2014	71.3	67.8	73.1	65.6	70.1
3-5	2012	61.4	61.1	65.8	57.5	57.0
	2013	64.8	62.8	68.9	64.6	62.6
	2014	68.1	67.9	68.8	64.7	64.5

## AVERAGE PERCENTAGE OF ITEMS CORRECT BY REPORTING CATEGORY

Grade	Year	REPORTING CATEGORY				
		1. Numbers, Operations, and Quantitative Reasoning	2. Patterns, Relationships, and Algebraic Reasoning	3. Geometry and Spatial Reasoning	4. Measurement	5. Probability and Statistics
6	2012	48.0	58.1	54.2	49.2	49.5
	2013	50.2	51.8	48.3	41.3	47.0
	2014	51.5	49.7	51.3	48.6	53.1
7	2012	49.8	53.6	55.7	40.4	48.8
	2013	49.2	54.1	54.2	39.5	43.4
	2014	52.9	45.2	44.4	38.2	48.0
8	2012	43.3	40.3	36.6	37.6	45.3
	2013	45.9	50.8	47.0	44.1	40.6
	2014	49.2	48.4	49.3	42.7	53.0
6-8	2012	47.5	52.1	50.4	43.2	48.2
	2013	48.8	52.4	50.2	41.3	44.1
	2014	51.4	47.7	48.3	43.3	51.3

## PERCENTAGE SATISFACTORY (Levels 2 or 3)

Test	Year	White	African Amer	Hispanic	Econ Disadv	Special Educ	LEP	At Risk	Migrant	Male	Female	All	District
<b>ALGEBRA I</b>	<b>2012</b>	77.8	57.1	66.8	66.5	38.5	59.5	53.6		63.4	67.3	65.3	74.7
	<b>2013</b>	82.4	61.4	78.2	75.9	78.9	67.3	64.4	*	77.1	74.5	75.8	72.5
	<b>2014</b>	91.7	67.2	73.8	75.3	31.6	59.7	64.0		72.1	76.3	74.1	78.0
Tests Taken	<b>2012</b>	18	91	392	430	13	111	261		262	254	516	8,795
	<b>2013</b>	17	70	381	402	19	107	261	1	236	243	479	9,251
	<b>2014</b>	24	67	400	368	19	129	322		265	241	506	9,524

## NUMBER UNSATISFACTORY (Level 1)

Test	Year	White	African Amer	Hispanic	Econ Disadv	Special Educ	LEP	At Risk	Migrant	Male	Female	All	District
<b>ALGEBRA I</b>	<b>2012</b>	4	39	130	144	8	45	135		96	83	179	2,226
	<b>2013</b>	3	27	83	97	4	35	93	*	54	62	116	2,540
	<b>2014</b>	2	22	105	91	13	52	116		74	57	131	2,099
Tests Taken	<b>2012</b>	18	91	392	430	13	111	261		262	254	516	8,795
	<b>2013</b>	17	70	381	402	19	107	261	1	236	243	479	9,251
	<b>2014</b>	24	67	400	368	19	129	322		265	241	506	9,524

## PERCENTAGE ADVANCED (Level 3)

Test	Year	White	African Amer	Hispanic	Econ Disadv	Special Educ	LEP	At Risk	Migrant	Male	Female	All	District
<b>ALGEBRA I</b>	<b>2012</b>	0.0	2.2	3.3	3.7	0.0	0.9	0.3		4.2	2.0	3.1	7.0
	<b>2013</b>	5.9	1.4	5.8	5.2	5.3	1.9	1.9	*	7.2	3.3	5.2	8.6
	<b>2014</b>	12.5	3.0	7.0	6.8	0.0	1.6	1.2		7.9	6.6	7.3	9.9
Tests Taken	<b>2012</b>	18	91	392	430	13	111	291		262	254	516	8,795
	<b>2013</b>	17	70	381	402	19	107	261	1	236	243	479	9,251
	<b>2014</b>	24	67	400	368	19	129	322		265	241	506	9,524

## AVERAGE PERCENTAGE OF ITEMS CORRECT BY REPORTING CATEGORY

<b>ALGEBRA I</b>	1. Functional Relationships	2. Properties and Attributes of Functions	3. Linear Functions	4. Linear Equations and Inequalities	5. Quadratic and Other Nonlinear Functions
<b>2012</b>	50.5	42.0	45.8	41.5	46.6
<b>2013</b>	50.6	46.1	49.9	54.8	49.5
<b>2014</b>	47.0	46.9	51.6	50.7	47.6

**PERCENTAGE SATISFACTORY (Levels 2 or 3)**

Grade	Year	White	African Amer	Hispanic	Econ Disadv	Special Educ	LEP	At Risk	Migrant	Male	Female	All	District	Number Tested (All Students)
5	2012	90.3	50.0	54.1	54.3	21.4	47.3	46.3		61.2	53.2	57.3	58.2	737
	2013	89.1	42.7	67.0	62.0	34.9	62.6	57.7	*	69.0	59.8	64.8	65.1	693
	2014	84.6	61.3	61.5	61.3	34.5	59.3	54.3		64.7	63.7	64.2	61.3	528

NUMBER TESTED IN GRADE 5													
2012	62	124	532	652	42	355	477		376	361	737	10,697	
2013	55	110	515	615	43	329	414	1	381	311	693	10,180	
2014	52	93	371	445	29	209	361		258	270	528	9,073	

**PERCENTAGE SATISFACTORY (Levels 2 or 3)**

Grade	Year	White	African Amer	Hispanic	Econ Disadv	Special Educ	LEP	At Risk	Migrant	Male	Female	All	District	Number Tested (All Students)
8	2012	75.0	33.3	49.9	49.0	24.1	38.6	33.5		58.1	40.2	49.1	54.0	580
	2013	92.9	57.1	61.3	61.5	44.4	46.7	46.6		66.5	58.6	62.5	65.8	568
	2014	72.7	51.5	64.3	60.9	29.4	42.6	46.9		64.6	60.8	62.8	61.9	596

NUMBER TESTED IN GRADE 8													
2012	24	81	459	510	29	166	340		289	291	580	9,431	
2013	28	77	452	496	27	150	305		278	290	568	8,998	
2014	22	101	460	493	17	183	388		308	288	596	9,466	



**NUMBER UNSATISFACTORY (Level 1)**

Grade	Year	White	African Amer	Hispanic	Econ Disadv	Special Educ	LEP	At Risk	Migrant	Male	Female	All	District	Number Tested (All Students)
5	2012	6	62	244	298	33	187	256		146	169	315	4476	737
	2013	6	63	170	234	28	123	175	*	118	125	244	3551	693
	2014	8	36	143	172	19	85	165		91	98	189	3511	528

NUMBER TESTED IN GRADE 5													
2012	62	124	532	652	42	355	477			376	361	737	10,697
2013	55	110	515	615	43	329	414	1		381	311	693	10,180
2014	52	93	371	445	29	209	361			258	270	528	9,073

**NUMBER UNSATISFACTORY (Level 1)**

Grade	Year	White	African Amer	Hispanic	Econ Disadv	Special Educ	LEP	At Risk	Migrant	Male	Female	All	District	Number Tested (All Students)
8	2012	6	54	230	260	22	102	226		121	174	295	4335	580
	2013	2	33	175	191	15	80	163		93	120	213	3074	568
	2014	6	49	164	193	12	105	206		109	113	222	3605	596

NUMBER TESTED IN GRADE 8													
2012	24	81	459	510	29	166	340		289	291	580	9,431	
2013	28	77	452	496	27	150	305		278	290	568	8,998	
2014	22	101	460	493	17	183	388		308	288	596	9,466	

**PERCENTAGE ADVANCED (Level 3)**

Grade	Year	White	African Amer	Hispanic	Econ Disadv	Special Educ	LEP	At Risk	Migrant	Male	Female	All	District	Number Tested (All Students)
5	2012	22.6	3.2	5.5	5.4	2.4	2.0	1.7		7.7	5.3	6.5	6.5	737
	2013	27.3	3.6	3.1	3.7	4.7	1.8	1.7	*	6.6	4.5	5.6	6.6	693
	2014	21.2	2.2	5.4	5.8	3.4	5.7	3.9		7.4	5.9	6.6	5.3	528

NUMBER TESTED IN GRADE 5													
2012	62	124	532	652	42	355	477		376	361	737	10,697	
2013	55	110	515	615	43	329	414	1	381	311	693	10,180	
2014	52	93	371	445	29	209	361		258	270	528	9,073	

**PERCENTAGE ADVANCED (Level 3)**

Grade	Year	White	African Amer	Hispanic	Econ Disadv	Special Educ	LEP	At Risk	Migrant	Male	Female	All	District	Number Tested (All Students)
8	2012	0.0	1.2	0.9	0.8	0.0	0.6	0.6		1.4	0.3	0.9	4.2	580
	2013	10.7	2.6	2.4	2.8	0.0	0.0	1.0		4.7	1.7	3.2	7.1	568
	2014	9.1	2.0	8.5	7.3	0.0	2.2	1.5		9.1	5.9	7.6	11.3	596

NUMBER TESTED IN GRADE 8													
2012	24	81	459	510	29	166	340		289	291	580	9,431	
2013	28	77	452	496	27	150	305		278	290	568	8,998	
2014	22	101	460	493	17	183	388		308	288	596	9,466	

**AVERAGE PERCENTAGE OF ITEMS CORRECT BY REPORTING CATEGORY**

Grade	Year	REPORTING CATEGORY			
		1. Matter and Energy	2. Force, Motion, and Energy	3. Earth and Space	4. Organisms and Environments
5	2012	72.8	74.9	63.5	62.4
	2013	69.3	71.5	61.0	61.5
	2014	65.0	67.5	61.3	67.1
8	2012	52.0	51.2	52.3	55.6
	2013	60.0	54.4	54.5	56.4
	2014	57.9	59.1	54.6	68.0

## PERCENTAGE SATISFACTORY (Levels 2 and 3)

Test	Year	White	African Amer	Hispanic	Econ Disadv	Special Educ	LEP	At Risk	Migrant	Male	Female	All	District
<b>BIOLOGY</b>	<b>2012</b>	78.6	78.0	77.9	76.4	47.1	61.3	69.7		76.6	79.3	78.0	82.9
	<b>2013</b>	91.7	73.0	84.7	84.3	50.0	77.8	77.0	*	85.6	81.0	83.4	84.4
	<b>2014</b>	91.7	92.2	90.2	91.4	70.4	80.8	86.0		86.4	94.4	90.3	89.8
Tests Taken	<b>2012</b>	14	82	321	347	17	93	277		214	213	427	8,881
	<b>2013</b>	12	63	320	331	22	99	252	1	209	200	409	9,374
	<b>2014</b>	24	64	379	336	27	130	307		242	234	476	9,672

## NUMBER UNSATISFACTORY (Level 1)

Test	Year	White	African Amer	Hispanic	Econ Disadv	Special Educ	LEP	At Risk	Migrant	Male	Female	All	District
<b>BIOLOGY</b>	<b>2012</b>	3	18	71	82	9	36	84		50	44	94	1,522
	<b>2013</b>	1	17	49	52	11	22	58	*	30	38	68	1,467
	<b>2014</b>	2	5	37	29	8	25	43		33	13	46	987
Tests Taken	<b>2012</b>	14	82	321	347	17	93	277		214	213	427	8,881
	<b>2013</b>	12	63	320	331	22	99	252	1	209	200	409	9,374
	<b>2014</b>	24	64	379	336	27	130	307		242	234	476	9,672

## PERCENTAGE ADVANCED (Level 3)

Test	Year	White	African Amer	Hispanic	Econ Disadv	Special Educ	LEP	At Risk	Migrant	Male	Female	All	District
<b>BIOLOGY</b>	<b>2012</b>	14.3	2.4	0.6	1.2	0.0	0.0	0.4		1.9	0.9	1.4	4.8
	<b>2013</b>	25.0	0.0	1.9	2.1	0.0	0.0	0.8	*	4.3	0.5	2.4	7.5
	<b>2014</b>	8.3	4.7	5.8	6.3	0.0	3.8	2.3		6.2	5.6	5.9	7.5
Tests Taken	<b>2012</b>	14	82	321	347	17	93	277		214	213	427	8,881
	<b>2013</b>	12	63	320	331	22	99	252	1	209	200	409	9,374
	<b>2014</b>	24	64	379	336	27	130	307		242	234	476	9,672



## AVERAGE PERCENTAGE OF ITEMS CORRECT BY REPORTING CATEGORY

<b>BIOLOGY</b>	1. Cell Structure and Function	2. Mechanisms of Genetics	3. Biological Evolution and Classification	4. Biological Processes and Systems	5. Interdependence within Environmental Systems
<b>2012</b>	44.1	47.3	52.7	41.8	51.8
<b>2013</b>	45.3	47.6	58.0	50.6	53.1
<b>2014</b>	53.5	57.0	62.0	63.1	53.3

**PERCENTAGE SATISFACTORY (Levels 2 or 3)**

Grade	Year	White	African Amer	Hispanic	Econ Disadv	Special Educ	LEP	At Risk	Migrant	Male	Female	All	District	Number Tested (All Students)
8	2012	75.0	45.6	50.7	50.0	32.1	35.0	35.7		59.5	42.0	50.8	52.5	575
	2013	82.1	63.6	57.6	58.9	28.6	42.4	46.4		64.9	54.8	59.8	59.3	569
	2014	72.7	41.6	50.1	48.4	23.5	30.4	34.2		50.0	49.8	49.9	53.5	597

NUMBER TESTED IN GRADE 8													
2012	24	79	456	506	28	163	336		289	286	575	9,392	
2013	28	77	453	496	28	151	306		279	290	569	8,991	
2014	22	101	461	494	17	184	389		308	289	597	9,464	

**NUMBER UNSATISFACTORY (Level 1)**

Grade	Year	White	African Amer	Hispanic	Econ Disadv	Special Educ	LEP	At Risk	Migrant	Male	Female	All	District	Number Tested (All Students)
8	2012	6	43	225	253	19	106	216		117	166	283	4462	575
	2013	5	28	192	204	20	87	164		98	131	229	3656	569
	2014	6	59	230	255	13	128	256		154	145	299	4402	597

NUMBER TESTED IN GRADE8													
2012	24	79	456	506	28	163	336		289	286	575	9,392	
2013	28	77	453	496	28	151	306		279	290	569	8,991	
2014	22	101	461	494	17	184	389		308	289	597	9,464	

**PERCENTAGE ADVANCED (Level 3)**

Grade	Year	White	African Amer	Hispanic	Econ Disadv	Special Educ	LEP	At Risk	Migrant	Male	Female	All	District	Number Tested (All Students)
8	2012	12.5	3.8	3.9	4.2	0.0	1.2	1.5		6.2	2.4	4.3	7.1	575
	2013	10.7	5.2	3.8	3.6	0.0	2.0	2.3		7.5	1.7	4.6	8.8	569
	2014	13.6	1.0	4.8	4.3	0.0	2.2	1.5		5.8	3.5	4.7	7.3	597

NUMBER TESTED IN GRADE 8													
2012	24	79	456	506	28	163	336		289	286	575	9,392	
2013	28	77	453	496	28	151	306		279	290	569	8,991	
2014	22	101	461	494	17	184	389		308	289	597	9,464	

## AVERAGE PERCENTAGE OF ITEMS CORRECT BY REPORTING CATEGORY

Grade	Year	REPORTING CATEGORY			
		1. History	2. Geography and Culture	3. Government and Citizenship	4. Economics, Science, Technology, and Society
8	2012	50.4	50.8	46.9	50.3
	2013	58.4	60.3	45.5	49.5
	2014	53.5	44.5	47.4	55.7

## PERCENTAGE SATISFACTORY (Levels 2 or 3)

Test	Year	White	African Amer	Hispanic	Econ Disadv	Special Educ	LEP	At Risk	Migrant	Male	Female	All	District
U.S. HISTORY	2012												*
	2013			*	*			*		*		*	90.2
	2014	87.5	84.3	90.6	87.8	52.9	83.3	86.1	*	87.9	89.3	88.6	92.0
Tests Taken	2012												4
	2013			1	1			1		1		1	51
	2014	16	70	267	262	17	78	274	1	173	187	360	7,801

## NUMBER UNSATISFACTORY (Level 1)

Test	Year	White	African Amer	Hispanic	Econ Disadv	Special Educ	LEP	At Risk	Migrant	Male	Female	All	District
U.S. HISTORY	2012												*
	2013			*	*			*		*		*	5
	2014	2	11	25	32	8	13	38	*	21	20	41	625
Tests Taken	2012												4
	2013			1	1			1		1		1	51
	2014	16	70	267	262	17	78	274	1	173	187	360	7,801

## PERCENTAGE ADVANCED (Level 3)

Test	Year	White	African Amer	Hispanic	Econ Disadv	Special Educ	LEP	At Risk	Migrant	Male	Female	All	District
U.S. HISTORY	2012												*
	2013			*	*			*		*		*	2.0
	2014	31.3	11.4	6.4	8.4	5.9	3.8	6.2	*	9.8	7.5	8.6	10.3
Tests Taken	2012												4
	2013			1	1			1		1		1	51
	2014	16	70	267	262	17	78	274	1	173	187	360	7,801



## AVERAGE PERCENTAGE OF ITEMS CORRECT BY REPORTING CATEGORY

U.S. HISTORY	1. History	2. Geography and Culture	3. Government and Citizenship	4. Economics, Science, Technology, and Society
2012				
2013	*	*	*	*
2014	56.2	63.6	59.9	62.3

**PERCENTAGE SATISFACTORY (Levels 2 or 3)**

Grade	Year	White	African Amer	Hispanic	Econ Disadv	Special Educ	LEP	At Risk	Migrant	Male	Female	All	District	Number Tested (All Students)
3	2012			60.0	59.6	*	60.0	59.9		50.6	68.7	59.8	65.5	326
	2013			69.4	68.8	28.6	69.2	69.3		67.7	70.7	69.2	69.6	370
	2014	*		70.4	70.5	33.3	70.1	70.3		64.2	75.8	70.3	65.2	400
4	2012			62.3	61.5	*	62.2	62.4		57.7	67.2	62.3	64.4	252
	2013			60.1	59.5	*	59.2	59.9		55.6	63.7	59.9	61.0	304
	2014			56.9	56.4	35.7	56.6	56.7		51.2	62.4	56.7	60.8	321
5	2012			71.3	70.2	*	70.9	70.9		65.3	77.2	71.1	72.1	232
	2013			87.4	87.4	*	87.1	87.1		84.9	90.8	87.4	86.5	182
	2014			82.7	82.6	*	83.1	83.1		81.0	84.3	82.8	83.0	261
3-5	2012			63.9	63.1	18.2	63.8	63.8		57.1	70.6	63.8	66.8	810
	2013			69.9	69.4	23.8	69.5	69.7		67.9	71.7	69.7	70.6	856
	2014	*		69.2	68.9	37.5	69.1	69.2		64.0	74.0	69.1	68.7	982

NUMBER TESTED IN GRADES 3-5														
2012			807	776	11	806	804		408	402	810	14,102		
2013			854	830	21	837	845		439	417	856	13,810		
2014	2		978	920	24	975	972		478	504	982	14,654		

**NUMBER UNSATISFACTORY (Level 1)**

Grade	Year	White	African Amer	Hispanic	Econ Disadv	Special Educ	LEP	At Risk	Migrant	Male	Female	All	District	Number Tested (All Students)
3	2012			130	129	*	130	130		79	52	131	1,957	326
	2013			113	111	10	114	112		61	53	114	1,697	370
	2014	*		118	112	4	118	116		69	50	119	2,005	400
4	2012			95	92	*	95	94		55	40	95	1,728	252
	2013			121	121	*	118	121		64	58	122	1,915	304
	2014			138	133	9	139	139		80	59	139	1,891	321
5	2012			66	65	*	67	67		41	26	67	998	232
	2013			23	22	*	23	23		16	7	23	449	182
	2014			45	41	*	44	44		23	22	45	692	261
3-5	2012			291	286	9	292	291		175	118	293	4,683	810
	2013			257	254	16	255	256		141	118	259	4,061	856
	2014	*		301	286	15	301	299		172	131	303	4,588	982

NUMBER TESTED IN GRADES 3-5														
2012			807	776	11	806	804		408	402	810	14,102		
2013			854	830	21	837	845		439	417	856	13,810		
2014	2		978	920	24	975	972		478	504	982	14,654		

PERCENTAGE ADVANCED (Level 3)

Grade	Year	White	African Amer	Hispanic	Econ Disadv	Special Educ	LEP	At Risk	Migrant	Male	Female	All	District	Number Tested (All Students)
3	2012			8.3	8.2	*	8.3	8.3		4.4	12.0	8.3	13.4	326
	2013			15.2	14.3	7.1	15.1	15.1		15.3	14.9	15.1	17.4	370
	2014	*		22.1	22.6	0.0	21.8	21.5		15.0	28.5	22.0	17.6	400
4	2012			9.1	7.5	*	8.8	8.8		7.7	10.7	9.1	13.0	252
	2013			11.9	11.7	*	11.4	11.9		9.7	13.8	11.8	13.4	304
	2014			10.6	10.2	0.0	10.6	10.6		10.4	10.8	10.6	12.5	321
5	2012			9.1	10.1	*	9.6	9.6		6.8	12.3	9.5	12.1	232
	2013			8.8	8.0	*	8.4	7.9		6.6	11.8	8.8	11.6	182
	2014			14.2	14.9	*	14.2	14.2		9.9	17.9	14.2	15.8	261
3-5	2012			8.8	8.5	0.0	8.8	8.8		6.1	11.7	8.9	12.9	810
	2013			12.6	12.0	4.8	12.4	12.4		11.4	13.9	12.6	14.6	856
	2014	*		16.3	16.5	0.0	16.1	15.9		12.1	20.0	16.2	15.4	982

NUMBER TESTED IN GRADE 3-5													
2012			807	776	11	806	804		408	402	810	14,102	
2013			854	830	21	837	845		439	417	856	13,810	
2014	2		978	920	24	975	972		478	504	982	14,654	

## AVERAGE PERCENTAGE OF ITEMS CORRECT BY REPORTING CATEGORY

Grade	Year	REPORTING CATEGORY		
		1. Understanding Across Genres	2. Understanding/Analysis of Literary Texts	3. Understanding/Analysis of Informational Texts
3	2012	65.1	55.6	47.8
	2013	55.2	60.2	59.2
	2014	66.8	60.7	61.3
4	2012	52.5	62.4	56.9
	2013	60.3	60.9	52.2
	2014	61.8	55.6	58.9
5	2012	57.1	62.8	59.2
	2013	61.3	62.3	68.3
	2014	59.5	66.4	65.9
3-5	2012	58.9	59.8	53.9
	2013	58.3	60.9	58.6
	2014	63.2	60.6	61.7

**PERCENTAGE SATISFACTORY (Levels 2 or 3)**

Grade	Year	White	African Amer	Hispanic	Econ Disadv	Special Educ	LEP	At Risk	Migrant	Male	Female	All	District	Number Tested (All Students)
4	2012			68.3	67.7	*	68.2	68.4		63.8	73.0	68.3	68.9	293
	2013			57.7	57.8	*	56.0	57.5		46.2	67.5	57.5	62.2	308
	2014			68.0	67.4	21.4	67.7	67.8		55.8	80.4	67.8	65.6	323

NUMBER TESTED IN GRADE 4													
2012			293	279	5	292	291		152	141	293	4,905	
2013			307	303	5	291	306		145	163	308	4,958	
2014			322	307	14	322	323		165	158	323	4,841	

**NUMBER UNSATISFACTORY (Level 1)**

Grade	Year	White	African Amer	Hispanic	Econ Disadv	Special Educ	LEP	At Risk	Migrant	Male	Female	All	District	Number Tested (All Students)
4	2012			93	90	*	93	92		55	38	93	1,524	293
	2013			130	128	*	128	130		78	53	131	1,876	308
	2014			103	100	11	104	104		73	31	104	1,667	323

NUMBER TESTED IN GRADE 4													
2012			293	279	5	292	291		152	141	293	4,905	
2013			307	303	5	291	306		145	163	308	4,958	
2014			322	307	14	322	323		165	158	323	4,841	

**PERCENTAGE ADVANCED (Level 3)**

Grade	Year	White	African Amer	Hispanic	Econ Disadv	Special Educ	LEP	At Risk	Migrant	Male	Female	All	District	Number Tested (All Students)
4	2012			2.4	2.5	*	2.4	2.4		0.7	4.3	2.4	2.4	293
	2013			2.6	2.6	*	2.4	2.6		1.4	3.7	2.6	3.6	308
	2014			4.3	4.2	0.0	4.3	4.3		2.4	6.3	4.3	5.9	323

NUMBER TESTED IN GRADE 4													
2012			293	279	5	292	291		152	141	293	4,905	
2013			307	303	5	291	306		145	163	308	4,958	
2014			322	307	14	322	323		165	158	323	4,841	



**AVERAGE PERCENTAGE OF ITEMS CORRECT BY REPORTING CATEGORY**

Grade	Year	REPORTING CATEGORY			
		1. Composition <sup>1</sup> Personal Narrative	1. Composition <sup>1</sup> Expository	2. Revision	3. Editing
4	2012	1.9	1.9	61.4	65.2
	2013	4.2	4.0	58.1	66.0
	2014	4.6	4.1	63.9	65.3

<sup>1</sup>Average score points (range 0-8). A STAAR composition is rated twice on a scale of 1 to 4, and the ratings are summed to determine score points for the composition. Score point scale: 0=Non-scorable; 2=Very Limited; 3=between Very Limited and Basic; 4=Basic; 5=between Basic and Satisfactory; 6=Satisfactory; 7=between Satisfactory and Accomplished; 8=Accomplished

**PERCENTAGE SATISFACTORY (Levels 2 or 3)**

Grade	Year	White	African Amer	Hispanic	Econ Disadv	Special Educ	LEP	At Risk	Migrant	Male	Female	All	District	Number Tested (All Students)
3	2012		*	46.2	44.4		44.4	44.4		22.2	55.6	44.4	36.6	27
	2013			*	*		*	*		*	*	*	20.5	4
	2014			33.3	36.4		33.3	33.3		*	37.5	33.3	23.0	12
4	2012			*	*		*	*		*	*	*	28.4	4
	2013			42.9	42.9		42.9	*		*	*	42.9	27.3	7
	2014			16.7	16.7		15.4	15.4		12.5	*	15.4	22.8	13
5	2012			*	*	*	*	*		*	*	*	24.1	5
	2013			100.0	100.0		100.0	*		*	*	100.0	41.5	8
	2014			53.8	50.0		58.3	58.3		62.5	*	53.8	38.8	13
3-5	2012		*	45.7	42.9	*	45.7	45.7		42.9	45.5	44.4	31.7	36
	2013			63.2	61.1		63.2	69.2		80.0	44.4	63.2	30.9	19
	2014			35.1	32.3		35.1	35.1		35.0	33.3	34.2	29.2	38

NUMBER TESTED IN GRADES 3-5													
2012		1	35	35	1	35	35		14	22	36	259	
2013			19	18		19	13		10	9	19	233	
2014			37	31		37	37		20	18	38	295	

**NUMBER UNSATISFACTORY (Level 1)**

Grade	Year	White	African Amer	Hispanic	Econ Disadv	Special Educ	LEP	At Risk	Migrant	Male	Female	All	District	Number Tested (All Students)
3	2012		*	14	15		15	15		7	8	15	83	27
	2013			*	*		*	*		*	*	*	58	4
	2014			8	7		8	8		*	5	8	77	12
4	2012			*	*		*	*		*	*	*	53	4
	2013			4	4		4	*		*	*	4	48	7
	2014			10	10		11	11		7	*	11	61	13
5	2012			*	*	*	*	*		*	*	*	41	5
	2013			0	0		0	*		*	*	0	55	8
	2014			6	4		5	5		3	*	6	71	13
3-5	2012		*	19	20	*	19	19		8	12	20	177	36
	2013			7	7		7	4		2	5	7	161	19
	2014			24	21		24	24		13	12	25	209	38

NUMBER TESTED IN GRADES 3-5													
2012		1	35	35	1	35	35		14	22	36	259	
2013			19	18		19	13		10	9	19	233	
2014			37	31		37	37		20	18	38	295	

PERCENTAGE ADVANCED (Level 3)

Grade	Year	White	African Amer	Hispanic	Econ Disadv	Special Educ	LEP	At Risk	Migrant	Male	Female	All	District	Number Tested (All Students)
3	2012		*	0.0	0.0		0.0	0.0		0.0	0.0	0.0	0.8	27
	2013			*	*		*	*		*	*	*	1.4	4
	2014			0.0	0.0		0.0	0.0		*	0.0	0.0	0.0	12
4	2012			*	*		*	*		*	*	*	2.7	4
	2013			0.0	0.0		0.0	*		*	*	0.0	3.0	7
	2014			8.3	8.3		7.7	7.7		0.0	*	7.7	1.3	13
5	2012			*	*	*	*	*		*	*	*	1.9	5
	2013			12.5	14.3		12.5	*		*	*	12.5	1.1	8
	2014			7.7	12.5		8.3	8.3		12.5	*	7.7	0.9	13
3-5	2012		*	0.0	0.0	*	0.0	0.0		0.0	0.0	0.0	1.5	36
	2013			5.3	5.6		5.3	0.0		0.0	11.1	5.3	1.7	19
	2014			5.4	6.5		5.4	5.4		5.0	5.6	5.3	0.7	38

NUMBER TESTED IN GRADE 3-5													
2012		1	35	35	1	35	35		14	22	36	259	
2013			19	18		19	13		10	9	19	233	
2014			37	31		37	37		20	18	38	295	

**AVERAGE PERCENTAGE OF ITEMS CORRECT BY REPORTING CATEGORY**

Grade	Year	REPORTING CATEGORY				
		1. Numbers, Operations, and Quantitative Reasoning	2. Patterns, Relationships, and Algebraic Reasoning	3. Geometry and Spatial Reasoning	4. Measurement	5. Probability and Statistics
3	2012	51.6	49.5	56.8	51.4	43.8
	2013	*	*	*	*	*
	2014	46.1	37.5	46.3	46.9	27.8
4	2012	*	*	*	*	*
	2013	51.3	52.4	45.2	48.2	45.7
	2014	43.9	41.0	41.0	40.4	26.2
5	2012	*	*	*	*	*
	2013	72.9	62.5	64.3	70.3	70.5
	2014	62.0	56.4	57.1	50.0	51.7
3-5	2012	52.4	50.6	52.2	50.7	42.2
	2013	60.1	57.5	56.0	57.2	59.7
	2014	50.8	45.2	48.2	45.7	35.4

**PERCENTAGE SATISFACTORY (Levels 2 or 3)**

Grade	Year	White	African Amer	Hispanic	Econ Disadv	Special Educ	LEP	At Risk	Migrant	Male	Female	All	District	Number Tested (All Students)
5	2012			45.5	45.3	*	44.4	44.4		33.3	54.8	45.5	45.4	55
	2013			42.9	39.1		42.9	39.1		53.8	30.4	42.9	43.0	49
	2014			53.8	52.8	*	53.6	53.3		47.9	58.8	53.6	55.6	196

NUMBER TESTED IN GRADE 5													
2012			55	53	1	54	54		24	31	55	1,164	
2013			49	46		49	46		26	23	49	1,122	
2014			195	178	3	196	195		94	102	196	2,304	

**NUMBER UNSATISFACTORY (Level 1)**

Grade	Year	White	African Amer	Hispanic	Econ Disadv	Special Educ	LEP	At Risk	Migrant	Male	Female	All	District	Number Tested (All Students)
5	2012			30	29	*	30	30		16	14	30	636	55
	2013			28	28		28	28		12	16	28	640	49
	2014			90	84	*	91	91		49	42	91	1022	196

NUMBER TESTED IN GRADE 5													
2012			55	53	1	54	54		24	31	55	1,164	
2013			49	46		49	46		26	23	49	1,122	
2014			195	178	3	196	195		94	102	196	2,304	

## PERCENTAGE ADVANCED (Level 3)

Grade	Year	White	African Amer	Hispanic	Econ Disadv	Special Educ	LEP	At Risk	Migrant	Male	Female	All	District	Number Tested (All Students)
5	2012			1.8	1.9	*	0.0	0.0		0.0	3.2	1.8	2.2	55
	2013			2.0	2.2		2.0	2.2		3.8	0.0	2.0	1.9	49
	2014			1.5	1.7	*	1.5	1.5		1.1	2.0	1.5	2.9	196

NUMBER TESTED IN GRADE 5													
2012			55	53	1	54	54		24	31	55	1,164	
2013			49	46		49	46		26	23	49	1,122	
2014			195	178	3	196	195		94	102	196	2,304	



## AVERAGE PERCENTAGE OF ITEMS CORRECT BY REPORTING CATEGORY

Grade	Year	REPORTING CATEGORY			
		1. Matter and Energy	2. Force, Motion, and Energy	3. Earth and Space	4. Organisms and Environments
5	2012	64.5	68.0	57.9	51.9
	2013	57.9	63.7	53.2	59.3
	2014	56.8	58.8	56.5	62.5

**PERCENTAGE SATISFACTORY (Levels 2 or 3)**

Grade	Year	White	African Amer	Hispanic	Econ Disadv	Special Educ	LEP	At Risk	Migrant	Male	Female	All	District	Number Tested (All Students)
3	2012		*	41.4	41.9		43.1	42.2		42.1	44.4	43.1	51.7	65
	2013			*	*		*	*		*		*	32.5	4
	2014			*	0.0		0.0	0.0		0.0	*	0.0	35.8	9
4	2012		*	*	9.1		9.1	10.0		0.0	*	9.1	23.7	11
	2013	*		*	*		*	*		*	*	*	32.7	5
	2014	*	*	*	37.5		37.5	37.5		*	*	37.5	25.4	8
5	2012		*	*	0.0		0.0	0.0		0.0	0.0	0.0	0.0	15
	2013		*		33.3	*	33.3	33.3		*	*	33.3	23.3	6
	2014	*	*	*	42.9		37.5	37.5		*	33.3	37.5	39.7	8
3-5	2012		*	39.1	30.7		31.9	31.8		29.6	35.1	31.9	39.6	91
	2013	*	*	*	35.7	*	40.0	38.5		44.4	33.3	40.0	31.0	15
	2014	*	*	12.5	25.0		24.0	24.0		36.4	14.3	24.0	34.8	25

NUMBER TESTED IN GRADES 3-5													
2012		5	64	88		91	88		54	37	91	682	
2013	1	1	3	14	1	15	13		9	6	15	523	
2014	2	2	8	24		25	25		11	14	25	454	

**PERCENTAGE SATISFACTORY (Levels 2 or 3)**

Grade	Year	White	African Amer	Hispanic	Econ Disadv	Special Educ	LEP	At Risk	Migrant	Male	Female	All	District	Number Tested (All Students)
6	2012			20.0	38.5		33.3	38.5		12.5	57.1	33.3	22.8	15
	2013	*	*	33.3	36.0		33.3	42.9		28.6	35.0	33.3	30.6	27
	2014	*	*	40.0	31.3	*	33.3	25.0	*	36.4	28.6	33.3	29.0	18
7	2012		*	38.1	34.8		32.0	31.6		21.4	45.5	32.0	16.9	25
	2013			0.0	9.1		9.1	14.3		0.0	*	9.1	24.3	11
	2014			29.2	30.0		28.0	28.0		28.6	27.3	28.0	24.8	25
8	2012	*	*	0.0	0.0		0.0	0.0		0.0	0.0	0.0	0.0	23
	2013			46.2	57.1		50.0	50.0		46.2	*	50.0	25.5	16
	2014	*		25.0	26.7		23.5	23.5		12.5	33.3	23.5	33.2	17
6-8	2012	*	*	21.3	22.8		20.6	24.4		11.8	31.0	20.6	12.7	63
	2013	*	*	32.5	36.0		33.3	40.5		28.6	38.5	33.3	26.8	54
	2014	*	*	31.4	29.4	*	28.3	25.9	*	27.3	29.6	28.3	29.1	60

NUMBER TESTED IN GRADES 6-8													
2012	1	2	47	57		63	45		34	29	63	620	
2013	1	1	40	50		54	42		28	26	54	634	
2014	2	1	51	51	1	60	58	1	33	27	60	722	

**NUMBER UNSATISFACTORY (Level 1)**

Grade	Year	White	African Amer	Hispanic	Econ Disadv	Special Educ	LEP	At Risk	Migrant	Male	Female	All	District	Number Tested (All Students)
3	2012		*	34	36		37	37		22	15	37	221	65
	2013			*	*		*	*		*		*	224	4
	2014			*	9		9	9		6	*	9	199	9
4	2012		*	*	10		10	9		7	*	10	106	11
	2013	*		*	*		*	*		*	*	*	68	5
	2014	*	*	*	5		5	5		*	*	5	53	8
5	2012		*	*	15		15	14		9	6	15	85	15
	2013		*		4	*	4	4		*	*	4	69	6
	2014	*	*	*	4		5	5		*	4	5	44	8
3-5	2012		*	39	61		62	60		38	24	62	412	91
	2013	*	*	*	9	*	9	8		5	4	9	361	15
	2014	*	*	7	18		19	19		7	12	19	296	25

NUMBER TESTED IN GRADES 3-5													
2012		5	64	88		91	88		54	37	91	682	
2013	1	1	3	14	1	15	13		9	6	15	523	
2014	2	2	8	24		25	25		11	14	25	454	

**NUMBER UNSATISFACTORY (Level 1)**

Grade	Year	White	African Amer	Hispanic	Econ Disadv	Special Educ	LEP	At Risk	Migrant	Male	Female	All	District	Number Tested (All Students)
6	2012			8	8		10	8		7	3	10	146	15
	2013	*	*	14	16		18	12		5	13	18	150	27
	2014	*	*	9	11	*	12	12	*	7	5	12	171	18
7	2012		*	13	15		17	13		11	6	17	177	25
	2013			6	10		10	6		8	*	10	162	11
	2014			17	14		18	18		10	8	18	176	25
8	2012	*	*	16	21		23	13		12	11	23	218	23
	2013			7	6		8	7		7	*	8	152	16
	2014	*		9	11		13	13		7	6	13	165	17
6-8	2012	*	*	37	44		50	34		30	20	50	541	63
	2013	*	*	27	32		36	25		20	16	36	464	54
	2014	*	*	35	36	*	43	43	*	24	19	43	512	60

NUMBER TESTED IN GRADES 6-8													
2012	1	2	47	57		63	45		34	29	63	620	
2013	1	1	40	50		54	42		28	26	54	634	
2014	2	1	51	51	1	60	58	1	33	27	60	722	

PERCENTAGE ADVANCED (Level 3)

Grade	Year	White	African Amer	Hispanic	Econ Disadv	Special Educ	LEP	At Risk	Migrant	Male	Female	All	District	Number Tested (All Students)
3	2012		*	1.7	1.6		1.5	1.6		2.6	0.0	1.5	4.6	65
	2013			*	*		*	*		*		*	1.5	4
	2014			*	0.0		0.0	0.0		0.0	*	0.0	2.3	9
4	2012		*	*	0.0		0.0	0.0		0.0	*	0.0	1.4	11
	2013	*		*	*		*	*		*	*	*	2.0	5
	2014	*	*	*	0.0		0.0	0.0		*	*	0.0	0.0	8
5	2012		*	*	0.0		0.0	0.0		0.0	0.0	0.0	0.0	15
	2013		*		0.0	*	0.0	0.0		*	*	0.0	0.0	6
	2014	*	*	*	0.0		0.0	0.0		*	0.0	0.0	0.0	8
3-5	2012		*	1.6	1.1		1.1	1.1		1.9	0.0	1.1	3.4	91
	2013	*	*	*	0.0	*	0.0	0.0		0.0	0.0	0.0	1.3	15
	2014	*	*	0.0	0.0		0.0	0.0		0.0	0.0	0.0	1.5	25

NUMBER TESTED IN GRADE 3-5													
2012		5	64	88		91	88		54	37	91	682	
2013	1	1	3	14	1	15	13		9	6	15	523	
2014	2	2	8	24		25	25		11	14	25	454	

PERCENTAGE ADVANCED (Level 3)

Grade	Year	White	African Amer	Hispanic	Econ Disadv	Special Educ	LEP	At Risk	Migrant	Male	Female	All	District	Number Tested (All Students)
6	2012			0.0	0.0		0.0	0.0		0.0	0.0	0.0	1.1	15
	2013	*	*	9.5	8.0		7.4	9.5		0.0	10.0	7.4	2.3	27
	2014	*	*	0.0	0.0	*	0.0	0.0	*	0.0	0.0	0.0	3.3	18
7	2012		*	0.0	0.0		0.0	0.0		0.0	0.0	0.0	0.0	25
	2013			0.0	0.0		0.0	0.0		0.0	*	0.0	0.9	11
	2014			0.0	0.0		0.0	0.0		0.0	0.0	0.0	0.0	25
8	2012	*	*	0.0	0.0		0.0	0.0		0.0	0.0	0.0	0.0	23
	2013			0.0	0.0		0.0	0.0		0.0	*	0.0	0.0	16
	2014	*		0.0	0.0		0.0	0.0		0.0	0.0	0.0	0.4	17
6-8	2012	*	*	0.0	0.0		0.0	0.0		0.0	0.0	0.0	0.3	63
	2013	*	*	5.0	4.0		3.7	4.8		0.0	7.7	3.7	1.1	54
	2014	*	*	0.0	0.0	*	0.0	0.0	*	0.0	0.0	0.0	1.2	60

NUMBER TESTED IN GRADE 6-8													
2012	1	2	47	57		63	45		34	29	63	620	
2013	1	1	40	50		54	42		28	26	54	634	
2014	2	1	51	51	1	60	58	1	33	27	60	722	

## AVERAGE PERCENTAGE OF ITEMS CORRECT BY REPORTING CATEGORY

Grade	Year	REPORTING CATEGORY				
		1. Numbers, Operations, and Quantitative Reasoning	2. Patterns, Relationships, and Algebraic Reasoning	3. Geometry and Spatial Reasoning	4. Measurement	5. Probability and Statistics
3	2012	48.0	52.3	65.8	49.8	42.6
	2013	*	*	*	*	*
	2014	26.7	27.8	55.6	40.3	20.4
4	2012	45.5	48.5	40.2	33.0	21.8
	2013	*	*	*	*	*
	2014	57.4	60.4	47.9	32.8	32.5
5	2012	58.9	50.0	46.7	54.2	63.0
	2013	46.3	27.8	47.6	33.3	57.6
	2014	53.5	45.8	39.3	54.7	51.1
3-5	2012	49.5	51.5	59.6	48.5	43.4
	2013	52.9	53.3	58.3	43.3	55.7
	2014	45.1	44.0	47.9	42.5	34.1



## AVERAGE PERCENTAGE OF ITEMS CORRECT BY REPORTING CATEGORY

Grade	Year	REPORTING CATEGORY				
		1. Numbers, Operations, and Quantitative Reasoning	2. Patterns, Relationships, and Algebraic Reasoning	3. Geometry and Spatial Reasoning	4. Measurement	5. Probability and Statistics
6	2012	36.3	38.9	37.5	36.7	36.7
	2013	39.6	41.7	44.0	42.1	37.0
	2014	35.8	40.3	38.2	27.1	28.5
7	2012	32.6	39.4	38.0	28.5	36.8
	2013	22.4	32.2	30.9	26.1	19.1
	2014	32.3	37.2	36.8	30.5	34.0
8	2012	39.5	35.1	32.6	31.8	32.6
	2013	46.6	46.4	34.4	48.1	38.8
	2014	35.3	31.9	24.3	38.5	31.2
6-8	2012	36.0	37.7	35.9	31.6	35.2
	2013	38.2	41.1	38.5	40.6	33.9
	2014	34.2	36.6	33.7	31.7	31.5

## PERCENTAGE SATISFACTORY (Levels 2 and 3)

Test	Year	White	African Amer	Hispanic	Econ Disadv	Special Educ	LEP	At Risk	Migrant	Male	Female	All	District
<b>ALGEBRA I</b>	<b>2012</b>	*	*	44.4	48.0		46.2	40.0		38.5	53.8	46.2	42.9
	<b>2013</b>			100.0	100.0		100.0	100.0		*	100.0	100.0	51.2
	<b>2014</b>	*	*	52.4	45.0		50.0	50.0		55.2	42.1	50.0	42.9
Tests Taken	<b>2012</b>	1	2	18	25		26	20		13	13	26	282
	<b>2013</b>			7	10		10	10		4	6	10	320
	<b>2014</b>	1	1	42	40		48	46		29	19	48	471

## NUMBER UNSATISFACTORY (Level 1)

Test	Year	White	African Amer	Hispanic	Econ Disadv	Special Educ	LEP	At Risk	Migrant	Male	Female	All	District
<b>ALGEBRA I</b>	<b>2012</b>	*	*	10	13		14	12		8	6	14	161
	<b>2013</b>			0	0		0	0		*	0	0	156
	<b>2014</b>	*	*	20	22		24	23		13	11	24	269
Tests Taken	<b>2012</b>	1	2	18	25		26	20		13	13	26	282
	<b>2013</b>			7	10		10	10		4	6	10	320
	<b>2014</b>	1	1	42	40		48	46		29	19	48	471

## PERCENTAGE ADVANCED (Level 3)

Test	Year	White	African Amer	Hispanic	Econ Disadv	Special Educ	LEP	At Risk	Migrant	Male	Female	All	District
<b>ALGEBRA I</b>	<b>2012</b>	*	*	0.0	0.0		0.0	0.0		0.0	0.0	0.0	2.5
	<b>2013</b>			0.0	0.0		0.0	0.0		*	0.0	0.0	4.1
	<b>2014</b>	*	*	0.0	0.0		0.0	0.0		0.0	0.0	0.0	2.3
Tests Taken	<b>2012</b>	1	2	18	25		26	20		13	13	26	282
	<b>2013</b>			7	10		10	10		4	6	10	320
	<b>2014</b>	1	1	42	40		48	46		29	19	48	471

## AVERAGE PERCENTAGE OF ITEMS CORRECT BY REPORTING CATEGORY

<b>ALGEBRA I</b>	1. Functional Relationships	2. Properties and Attributes of Functions	3. Linear Functions	4. Linear Equations and Inequalities	5. Quadratic and Other Nonlinear Functions
<b>2012</b>	44.7	38.5	35.9	35.4	42.7
<b>2013</b>	80.0	50.8	58.0	32.0	61.1
<b>2014</b>	47.7	37.2	41.3	34.6	40.5

**PERCENTAGE SATISFACTORY (Levels 2 or 3)**

Grade	Year	White	African Amer	Hispanic	Econ Disadv	Special Educ	LEP	At Risk	Migrant	Male	Female	All	District	Number Tested (All Students)
5	2012		*	*	50.0		50.0	53.8		57.1	42.9	50.0	17.0	14
	2013		*		16.7	*	16.7	16.7		*	*	16.7	20.3	6
	2014	*	*	*	*		33.3	33.3		*	*	33.3	16.1	6

NUMBER TESTED IN GRADE 5													
2012		2	4	14		14	13		7	7	14	88	
2013		1		6	1	6	6		3	3	6	74	
2014	1	1	1	5		6	6		2	4	6	56	

**PERCENTAGE SATISFACTORY (Levels 2 or 3)**

Grade	Year	White	African Amer	Hispanic	Econ Disadv	Special Educ	LEP	At Risk	Migrant	Male	Female	All	District	Number Tested (All Students)
8	2012		*	12.5	13.6		13.0	13.3		15.4	10.0	13.0	14.2	23
	2013			16.7	15.4		12.5	15.4		16.7	*	12.5	13.3	16
	2014	*		7.7	6.7		5.6	5.6		14.3	0.0	5.6	17.0	18

NUMBER TESTED IN GRADE 8													
2012		2	16	22		23	15		13	10	23	226	
2013			12	13		16	13		12	4	16	210	
2014	1		13	15		18	18		7	11	18	277	

**NUMBER UNSATISFACTORY (Level 1)**

Grade	Year	White	African Amer	Hispanic	Econ Disadv	Special Educ	LEP	At Risk	Migrant	Male	Female	All	District	Number Tested (All Students)
5	2012		*	*	7		7	6		3	4	7	73	14
	2013		*		5	*	5	5		*	*	5	59	6
	2014	*	*	*	*		4	4		*	*	4	47	6

NUMBER TESTED IN GRADE 5													
2012		2	4	14		14	13		7	7	14	88	
2013		1		6	1	6	6		3	3	6	74	
2014	1	1	1	5		6	6		2	4	6	56	



**NUMBER UNSATISFACTORY (Level 1)**

Grade	Year	White	African Amer	Hispanic	Econ Disadv	Special Educ	LEP	At Risk	Migrant	Male	Female	All	District	Number Tested (All Students)
8	2012		*	14	19		20	13		11	9	20	194	23
	2013			10	11		14	11		10	*	14	182	16
	2014	*		12	14		17	17		6	11	17	230	18

NUMBER TESTED IN GRADE 8													
2012		2	16	22		23	15		13	10	23	226	
2013			12	13		16	13		12	4	16	210	
2014	1		13	15		18	18		7	11	18	277	

**PERCENTAGE ADVANCED (Level 3)**

Grade	Year	White	African Amer	Hispanic	Econ Disadv	Special Educ	LEP	At Risk	Migrant	Male	Female	All	District	Number Tested (All Students)
5	2012		*	*	7.1		7.1	7.7		14.3	0.0	7.1	1.1	14
	2013		*		0.0	*	0.0	0.0		*	*	0.0	0.0	6
	2014	*	*	*	*		0.0	0.0		*	*	0.0	0.0	6

NUMBER TESTED IN GRADE 5													
2012		2	4	14		14	13		7	7	14	88	
2013		1		6	1	6	6		3	3	6	74	
2014	1	1	1	5		6	6		2	4	6	56	

**PERCENTAGE ADVANCED (Level 3)**

Grade	Year	White	African Amer	Hispanic	Econ Disadv	Special Educ	LEP	At Risk	Migrant	Male	Female	All	District	Number Tested (All Students)
8	2012		*	0.0	0.0		0.0	0.0		0.0	0.0	0.0	0.0	23
	2013			0.0	0.0		0.0	0.0		0.0	*	0.0	0.0	16
	2014	*		0.0	0.0		0.0	0.0		0.0	0.0	0.0	0.0	18

NUMBER TESTED IN GRADE 8													
2012		2	16	22		23	15		13	10	23	226	
2013			12	13		16	13		12	4	16	210	
2014	1		13	15		18	18		7	11	18	277	

## AVERAGE PERCENTAGE OF ITEMS CORRECT BY REPORTING CATEGORY

Grade	Year	REPORTING CATEGORY			
		1. Matter and Energy	2. Force, Motion, and Energy	3. Earth and Space	4. Organisms and Environments
5	2012	58.0	66.4	56.0	56.1
	2013	41.7	46.7	36.1	41.7
	2014	41.7	43.3	43.1	47.6
8	2012	33.2	32.6	35.1	41.6
	2013	40.2	43.8	45.1	40.6
	2014	24.6	29.2	34.9	32.9

## PERCENTAGE SATISFACTORY (Levels 2 and 3)

Test	Year	White	African Amer	Hispanic	Econ Disadv	Special Educ	LEP	At Risk	Migrant	Male	Female	All	District
<b>BIOLOGY</b>	<b>2012</b>	*	*	23.5	17.4		16.7	11.1		9.1	23.1	16.7	25.5
	<b>2013</b>			62.5	50.0		50.0	50.0		*	*	50.0	49.0
	<b>2014</b>			56.3	60.0		58.8	58.8		55.6	62.5	58.8	42.6
Tests Taken	<b>2012</b>	1	1	17	23		24	18		11	13	24	200
	<b>2013</b>			8	10		10	10		5	5	10	259
	<b>2014</b>			16	15		17	17		9	8	17	404

## NUMBER UNSATISFACTORY (Level 1)

Test	Year	White	African Amer	Hispanic	Econ Disadv	Special Educ	LEP	At Risk	Migrant	Male	Female	All	District
<b>BIOLOGY</b>	<b>2012</b>	*	*	13	19		20	16		10	10	20	149
	<b>2013</b>			3	5		5	5		*	*	5	132
	<b>2014</b>			7	6		7	7		4	3	7	232
Tests Taken	<b>2012</b>	1	1	17	23		24	18		11	13	24	200
	<b>2013</b>			8	10		10	10		5	5	10	259
	<b>2014</b>			16	15		17	17		9	8	17	404

## PERCENTAGE ADVANCED (Level 3)

Test	Year	White	African Amer	Hispanic	Econ Disadv	Special Educ	LEP	At Risk	Migrant	Male	Female	All	District
<b>BIOLOGY</b>	<b>2012</b>	*	*	0.0	0.0		0.0	0.0		0.0	0.0	0.0	0.0
	<b>2013</b>			0.0	0.0		0.0	0.0		*	*	0.0	0.0
	<b>2014</b>			0.0	0.0		0.0	0.0		0.0	0.0	0.0	0.2
Tests Taken	<b>2012</b>	1	1	17	23		24	18		11	13	24	200
	<b>2013</b>			8	10		10	10		5	5	10	259
	<b>2014</b>			16	15		17	17		9	8	17	404

## AVERAGE PERCENTAGE OF ITEMS CORRECT BY REPORTING CATEGORY

<b>BIOLOGY</b>	1. Cell Structure and Function	2. Mechanisms of Genetics	3. Biological Evolution and Classification	4. Biological Processes and Systems	5. Interdependence within Environmental Systems
<b>2012</b>	31.1	29.2	28.3	25.4	26.5
<b>2013</b>	36.4	30.0	47.0	39.1	40.0
<b>2014</b>	32.1	28.3	37.6	43.9	44.9



**PERCENTAGE SATISFACTORY (Levels 2 or 3)**

Grade	Year	White	African Amer	Hispanic	Econ Disadv	Special Educ	LEP	At Risk	Migrant	Male	Female	All	District	Number Tested (All Students)
8	2012		*	6.7	9.5		9.1	6.7		8.3	10.0	9.1	11.1	22
	2013			16.7	23.1		18.8	15.4		25.0	*	18.8	18.6	16
	2014	*		0.0	0.0		0.0	0.0		0.0	0.0	0.0	11.0	18

NUMBER TESTED IN GRADE 8													
2012		2	15	21		22	15		12	10	22	226	
2013			12	13		16	13		12	4	16	204	
2014	1		13	15		18	18		7	11	18	272	

**NUMBER UNSATISFACTORY (Level 1)**

Grade	Year	White	African Amer	Hispanic	Econ Disadv	Special Educ	LEP	At Risk	Migrant	Male	Female	All	District	Number Tested (All Students)
8	2012		*	14	19		20	14		11	9	20	201	22
	2013			10	10		13	11		9	*	13	166	16
	2014	*		13	15		18	18		7	11	18	242	18

NUMBER TESTED IN GRADE8													
2012		2	15	21		22	15		12	10	22	226	
2013			12	13		16	13		12	4	16	204	
2014	1		13	15		18	18		7	11	18	272	

**PERCENTAGE ADVANCED (Level 3)**

Grade	Year	White	African Amer	Hispanic	Econ Disadv	Special Educ	LEP	At Risk	Migrant	Male	Female	All	District	Number Tested (All Students)
8	2012		*	0.0	0.0		0.0	0.0		0.0	0.0	0.0	0.0	22
	2013			0.0	0.0		0.0	0.0		0.0	*	0.0	1.0	16
	2014	*		0.0	0.0		0.0	0.0		0.0	0.0	0.0	0.4	18

NUMBER TESTED IN GRADE 8													
2012		2	15	21		22	15		12	10	22	226	
2013			12	13		16	13		12	4	16	204	
2014	1		13	15		18	18		7	11	18	272	

## AVERAGE PERCENTAGE OF ITEMS CORRECT BY REPORTING CATEGORY

Grade	Year	REPORTING CATEGORY			
		1. History	2. Geography and Culture	3. Government and Citizenship	4. Economics, Science, Technology, and Society
8	2012	32.7	39.8	32.6	34.7
	2013	38.8	39.6	34.9	32.8
	2014	31.7	30.6	31.0	27.1

**PERCENTAGE SATISFACTORY (Levels 2 or 3)**

Grade	Year	White	African Amer	Hispanic	Econ Disadv	Special Educ	LEP	At Risk	Migrant	Male	Female	All	District	Number Tested (All Students)
3	2012	*	*	46.2	44.4	47.4	50.0	50.0		50.0	*	47.4	54.7	19
	2013	*	*	46.2	50.0	47.4	50.0	44.4		46.7	*	47.4	67.5	19
	2014		75.0	25.0	50.0	52.9	*	52.9		46.2	*	52.9	63.3	17
4	2012	*	75.0	75.0	75.0	75.9	63.6	68.2		76.5	75.0	75.9	58.0	29
	2013	*	*	40.0	40.0	42.9	33.3	40.0		41.2	*	42.9	60.2	21
	2014	*	*	21.4	27.8	31.6	18.2	23.5		37.5	*	31.6	62.9	19
5	2012	*	53.3	68.8	62.5	63.6	76.9	66.7		60.0	69.2	63.6	67.0	33
	2013	*	90.9	78.9	87.1	84.8	80.0	83.3		81.0	91.7	84.8	86.5	33
	2014		66.7	82.4	77.8	78.3	80.0	78.3		73.3	87.5	78.3	86.3	23
3-5	2012	*	57.1	65.3	62.8	64.2	64.7	62.9		62.3	67.9	64.2	61.0	81
	2013	83.3	70.0	57.4	63.8	63.0	57.1	61.9		58.5	75.0	63.0	73.4	73
	2014	*	66.7	48.7	51.9	55.9	51.6	54.4		52.3	66.7	55.9	73.2	59

NUMBER TESTED IN GRADES 3-5													
2012	3	28	49	78	81	34	62			53	28	81	1,384
2013	6	20	47	69	73	35	63			53	20	73	1,434
2014	1	18	39	52	59	31	57			44	15	59	1,362

**PERCENTAGE SATISFACTORY (Levels 2 or 3)**

Grade	Year	White	African Amer	Hispanic	Econ Disadv	Special Educ	LEP	At Risk	Migrant	Male	Female	All	District	Number Tested (All Students)
6	2012	*	46.7	45.5	46.2	46.2	47.6	43.8		46.2	46.2	46.2	65.5	39
	2013	*	70.6	72.0	68.3	68.2	66.7	68.6		64.3	75.0	68.2	55.9	44
	2014	*	60.0	45.5	48.1	51.5	42.1	51.6		38.1	75.0	51.5	51.6	33
7	2012	*	50.0	48.0	52.5	53.5	60.0	53.8		51.5	60.0	53.5	57.3	43
	2013		50.0	58.3	55.6	56.4	57.1	55.9		55.6	58.3	56.4	61.0	39
	2014	*	27.8	73.7	48.6	48.8	60.0	48.7		41.9	66.7	48.8	55.4	43
8	2012	*	78.6	53.3	62.1	64.5	50.0	63.0		47.4	91.7	64.5	58.0	31
	2013	*	54.5	80.8	70.0	71.4	68.8	73.0		67.7	81.8	71.4	74.5	42
	2014		72.7	65.2	64.5	65.7	43.8	63.6		60.9	75.0	65.7	75.0	35
6-8	2012	85.7	58.5	48.4	52.8	54.0	52.8	53.1		48.7	65.7	54.0	60.3	113
	2013	50.0	59.5	70.7	65.0	65.6	63.6	66.0		62.8	71.8	65.6	63.6	125
	2014	50.0	48.7	60.9	53.8	55.0	48.0	54.4		46.7	72.2	55.0	60.0	111

NUMBER TESTED IN GRADES 6-8													
2012	7	41	62	108	113	53	98		78	35	113	1,571	
2013	6	42	75	117	125	55	106		86	39	125	1,687	
2014	6	39	64	93	111	50	103		75	36	111	1,689	

**NUMBER UNSATISFACTORY (Level 1)**

Grade	Year	White	African Amer	Hispanic	Econ Disadv	Special Educ	LEP	At Risk	Migrant	Male	Female	All	District	Number Tested (All Students)
3	2012	*	*	7	10	10	5	8		8	*	10	149	19
	2013	*	*	7	9	10	4	10		8	*	10	114	19
	2014		2	6	8	8	*	8		7	*	8	114	17
4	2012	*	2	5	7	7	4	7		4	3	7	201	29
	2013	*	*	9	12	12	8	9		10	*	12	184	21
	2014	*	*	11	13	13	9	13		10	*	13	170	19
5	2012	*	7	5	12	12	3	8		8	4	12	190	33
	2013	*	1	4	4	5	3	5		4	1	5	84	33
	2014		2	3	4	5	3	5		4	1	5	81	23
3-5	2012	*	12	17	29	29	12	23		20	9	29	540	81
	2013	1	6	20	25	27	15	24		22	5	27	382	73
	2014	*	6	20	25	26	15	26		21	5	26	365	59

NUMBER TESTED IN GRADES 3-5													
2012	3	28	49	78	81	34	62		53	28	81	1,384	
2013	6	20	47	69	73	35	63		53	20	73	1,434	
2014	1	18	39	52	59	31	57		44	15	59	1,362	

**NUMBER UNSATISFACTORY (Level 1)**

Grade	Year	White	African Amer	Hispanic	Econ Disadv	Special Educ	LEP	At Risk	Migrant	Male	Female	All	District	Number Tested (All Students)
6	2012	*	8	12	21	21	11	18		14	7	21	181	39
	2013	*	5	7	13	14	6	11		10	4	14	270	44
	2014	*	4	12	14	16	11	15		13	3	16	281	33
7	2012	*	6	13	19	20	8	18		16	4	20	244	43
	2013		7	10	16	17	9	15		12	5	17	202	39
	2014	*	13	5	18	22	6	20		18	4	22	266	43
8	2012	*	3	7	11	11	6	10		10	1	11	199	31
	2013	*	5	5	12	12	5	10		10	2	12	142	42
	2014		3	8	11	12	9	12		9	3	12	128	35
6-8	2012	1	17	32	51	52	25	46		40	12	52	624	113
	2013	3	17	22	41	43	20	36		32	11	43	614	125
	2014	3	20	25	43	50	26	47		40	10	50	675	111

NUMBER TESTED IN GRADES 6-8													
2012	7	41	62	108	113	53	98		78	35	113	1,571	
2013	6	42	75	117	125	55	106		86	39	125	1,687	
2014	6	39	64	93	111	50	103		75	36	111	1,689	



PERCENTAGE ADVANCED (Level 3)

Grade	Year	White	African Amer	Hispanic	Econ Disadv	Special Educ	LEP	At Risk	Migrant	Male	Female	All	District	Number Tested (All Students)
3	2012	*	*	0.0	0.0	0.0	0.0	0.0		0.0	*	0.0	3.3	19
	2013	*	*	0.0	0.0	0.0	0.0	0.0		0.0	*	0.0	4.3	19
	2014		12.5	0.0	6.3	5.9	*	5.9		0.0	*	5.9	4.8	17
4	2012	*	0.0	0.0	0.0	0.0	0.0	0.0		0.0	0.0	0.0	3.3	29
	2013	*	*	6.7	5.0	4.8	8.3	6.7		5.9	*	4.8	3.5	21
	2014	*	*	0.0	0.0	0.0	0.0	0.0		0.0	*	0.0	6.3	19
5	2012	*	0.0	6.3	3.1	3.0	7.7	4.2		5.0	0.0	3.0	4.9	33
	2013	*	9.1	10.5	12.9	12.1	6.7	10.0		4.8	25.0	12.1	7.4	33
	2014		0.0	5.9	5.6	4.3	6.7	4.3		6.7	0.0	4.3	10.3	23
3-5	2012	*	0.0	2.0	1.3	1.2	2.9	1.6		1.9	0.0	1.2	4.0	81
	2013	16.7	5.0	6.4	7.2	6.8	5.7	6.3		3.8	15.0	6.8	5.4	73
	2014	*	5.6	2.6	3.8	3.4	3.2	3.5		2.3	6.7	3.4	7.7	59

NUMBER TESTED IN GRADE 3-5													
2012	3	28	49	78	81	34	62		53	28	81	1,384	
2013	6	20	47	69	73	35	63		53	20	73	1,434	
2014	1	18	39	52	59	31	57		44	15	59	1,362	

PERCENTAGE ADVANCED (Level 3)

Grade	Year	White	African Amer	Hispanic	Econ Disadv	Special Educ	LEP	At Risk	Migrant	Male	Female	All	District	Number Tested (All Students)
6	2012	*	6.7	0.0	2.6	2.6	4.8	3.1		3.8	0.0	2.6	3.6	39
	2013	*	0.0	4.0	2.4	2.3	0.0	2.9		3.6	0.0	2.3	3.1	44
	2014	*	10.0	4.5	3.7	6.1	5.3	6.5		4.8	8.3	6.1	2.9	33
7	2012	*	0.0	4.0	2.5	2.3	5.0	2.6		0.0	10.0	2.3	1.0	43
	2013		0.0	4.2	2.8	2.6	4.8	2.9		3.7	0.0	2.6	3.5	39
	2014	*	0.0	0.0	0.0	0.0	0.0	0.0		0.0	0.0	0.0	3.9	43
8	2012	*	0.0	0.0	0.0	0.0	0.0	0.0		0.0	0.0	0.0	1.1	31
	2013	*	0.0	0.0	0.0	0.0	0.0	0.0		0.0	0.0	0.0	2.5	42
	2014		0.0	8.7	6.5	5.7	6.3	6.1		4.3	8.3	5.7	2.9	35
6-8	2012	0.0	2.4	1.6	1.9	1.8	3.8	2.0		1.3	2.9	1.8	1.9	113
	2013	0.0	0.0	2.7	1.7	1.6	1.8	1.9		2.3	0.0	1.6	3.0	125
	2014	0.0	2.6	4.7	3.2	3.6	4.0	3.9		2.7	5.6	3.6	3.3	111

NUMBER TESTED IN GRADE 6-8													
2012	7	41	62	108	113	53	98		78	35	113	1,571	
2013	6	42	75	117	125	55	106		86	39	125	1,687	
2014	6	39	64	93	111	50	103		75	36	111	1,689	

## AVERAGE PERCENTAGE OF ITEMS CORRECT BY REPORTING CATEGORY

Grade	Year	REPORTING CATEGORY		
		1. Understanding Across Genres (GR 3-5) 1. Understanding/Analysis Across Genres (GR 6-8)	2. Understanding/Analysis of Literary Texts	3. Understanding/Analysis of Informational Texts
3	2012	46.3	52.3	40.9
	2013	41.1	50.8	47.8
	2014	45.9	51.3	48.4
4	2012	50.9	64.5	59.2
	2013	41.1	59.2	50.9
	2014	38.8	45.9	45.3
5	2012	48.5	50.3	43.3
	2013	51.5	61.8	53.5
	2014	53.8	56.8	52.2
3-5	2012	48.8	55.9	48.4
	2013	45.8	58.2	51.2
	2014	46.7	51.7	48.9

## AVERAGE PERCENTAGE OF ITEMS CORRECT BY REPORTING CATEGORY

Grade	Year	REPORTING CATEGORY		
		1. Understanding Across Genres (GR 3-5) 1. Understanding/Analysis Across Genres (GR 6-8)	2. Understanding/Analysis of Literary Texts	3. Understanding/Analysis of Informational Texts
6	2012	39.4	59.8	45.2
	2013	54.5	54.8	62.0
	2014	44.3	54.2	52.4
7	2012	48.5	46.8	40.0
	2013	56.7	54.4	46.8
	2014	48.5	53.4	41.4
8	2012	56.5	50.2	45.6
	2013	63.1	59.8	55.4
	2014	67.1	58.3	56.6
6-8	2012	47.6	52.2	43.3
	2013	58.1	56.4	55.0
	2014	53.2	55.1	49.5

## PERCENTAGE SATISFACTORY (Levels 2 and 3)

Test	Year	White	African Amer	Hispanic	Econ Disadv	Special Educ	LEP	At Risk	Migrant	Male	Female	All	District
ENGLISH I	2012												
	2013												
	2014	*	33.3	36.0	32.0	38.9	41.2	37.1		32.0	54.5	38.9	50.6
Tests Taken	2012												
	2013												
	2014	5	6	25	25	36	17	35		25	11	36	405
ENGLISH II	2012												
	2013												
	2014	*	90.9	61.1	70.0	75.0	64.3	71.4		70.0	83.3	75.0	65.3
Tests Taken	2012												
	2013												
	2014	2	11	18	20	32	14	28		20	12	32	340

## NUMBER UNSATISFACTORY (Level 1)

Test	Year	White	African Amer	Hispanic	Econ Disadv	Special Educ	LEP	At Risk	Migrant	Male	Female	All	District
ENGLISH I	2012												
	2013												
	2014	*	4	16	17	22	10	22		17	5	22	200
Tests Taken	2012												
	2013												
	2014	5	6	25	25	36	17	35		25	11	36	405
ENGLISH II	2012												
	2013												
	2014	*	1	7	6	8	5	8		6	2	8	118
Tests Taken	2012												
	2013												
	2014	2	11	18	20	32	14	28		20	12	32	340

## PERCENTAGE ADVANCED (Level 3)

Test	Year	White	African Amer	Hispanic	Econ Disadv	Special Educ	LEP	At Risk	Migrant	Male	Female	All	District
ENGLISH I	2012												
	2013												
	2014	*	0.0	0.0	0.0	2.8	0.0	2.9		4.0	0.0	2.8	3.5
Tests Taken	2012												
	2013												
	2014	5	6	25	25	36	17	35		25	11	36	405
ENGLISH II	2012												
	2013												
	2014	*	27.3	22.2	25.0	28.1	28.6	28.6		20.0	41.7	28.1	12.6
Tests Taken	2012												
	2013												
	2014	2	11	18	20	32	14	28		20	12	32	340

## AVERAGE PERCENTAGE OF ITEMS CORRECT BY REPORTING CATEGORY

ENGLISH I	1. Understanding & Analysis Across Genres	2. Understanding & Analysis of Literary Texts	3. Understanding & Analysis of Informational Texts	4. Literary Composition <sup>1</sup>	5. Revision	6. Editing
2012						
2013						
2014	56.3	47.8	53.4	2.2	44.4	50.9

ENGLISH II	1. Understanding & Analysis Across Genres	2. Understanding & Analysis of Literary Texts	3. Understanding & Analysis of Informational Texts	4. Expository Composition <sup>1</sup>	5. Revision	6. Editing
2012						
2013						
2014	62.5	59.7	58.3	3.2	56.3	70.5

<sup>1</sup>Average score points (range 0-6). A STAAR M composition is rated twice on a scale of 0 to 3, and the ratings are summed to determine score points for the composition. Score point scale: 0=Non-scorable; 2=Very Limited; 3=between Very Limited and Basic; 4=Basic; 5=between Basic and Satisfactory; 6=Satisfactory



**PERCENTAGE SATISFACTORY (Levels 2 or 3)**

Grade	Year	White	African Amer	Hispanic	Econ Disadv	Special Educ	LEP	At Risk	Migrant	Male	Female	All	District	Number Tested (All Students)
4	2012	*	71.4	75.0	77.8	75.0	54.5	70.0		81.3	66.7	75.0	57.5	28
	2013	*	*	28.6	21.1	25.0	25.0	20.0		18.8	*	25.0	48.9	20
	2014	*	*	25.0	21.1	25.0	30.8	22.2		26.7	*	25.0	47.7	20

NUMBER TESTED IN GRADE 4													
2012	1	7	20	27	28	11	20		16	12	28	475	
2013	2	4	14	19	20	12	15		16	4	20	452	
2014	1	3	16	19	20	13	18		15	5	20	449	

**PERCENTAGE SATISFACTORY (Levels 2 or 3)**

Grade	Year	White	African Amer	Hispanic	Econ Disadv	Special Educ	LEP	At Risk	Migrant	Male	Female	All	District	Number Tested (All Students)
7	2012	*	33.3	59.3	54.8	53.3	66.7	53.7		44.1	81.8	53.3	56.7	45
	2013		46.7	75.0	65.8	63.4	65.0	63.9		69.0	50.0	63.4	63.7	41
	2014	*	68.4	77.3	74.4	72.3	78.9	72.1		66.7	85.7	72.3	62.9	47

NUMBER TESTED IN GRADE 7													
2012	5	12	27	42	45	21	41		34	11	45	586	
2013		15	24	38	41	20	36		29	12	41	509	
2014	5	19	22	39	47	19	43		33	14	47	599	

**NUMBER UNSATISFACTORY (Level 1)**

Grade	Year	White	African Amer	Hispanic	Econ Disadv	Special Educ	LEP	At Risk	Migrant	Male	Female	All	District	Number Tested (All Students)
4	2012	*	2	5	6	7	5	6		3	4	7	202	28
	2013	*	*	10	15	15	9	12		13	*	15	231	20
	2014	*	*	12	15	15	9	14		11	*	15	235	20

NUMBER TESTED IN GRADE 4													
2012	1	7	20	27	28	11	20		16	12	28	475	
2013	2	4	14	19	20	12	15		16	4	20	452	
2014	1	3	16	19	20	13	18		15	5	20	449	

## NUMBER UNSATISFACTORY (Level 1)

Grade	Year	White	African Amer	Hispanic	Econ Disadv	Special Educ	LEP	At Risk	Migrant	Male	Female	All	District	Number Tested (All Students)
7	2012	*	8	11	19	21	7	19		19	2	21	254	45
	2013		8	6	13	15	7	13		9	6	15	185	41
	2014	*	6	5	10	13	4	12		11	2	13	222	47

NUMBER TESTED IN GRADE 7													
2012	5	12	27	42	45	21	41		34	11	45	586	
2013		15	24	38	41	20	36		29	12	41	509	
2014	5	19	22	39	47	19	43		33	14	47	599	

**PERCENTAGE ADVANCED (Level 3)**

Grade	Year	White	African Amer	Hispanic	Econ Disadv	Special Educ	LEP	At Risk	Migrant	Male	Female	All	District	Number Tested (All Students)
4	2012	*	0.0	15.0	11.1	10.7	18.2	10.0		12.5	8.3	10.7	5.3	28
	2013	*	*	0.0	0.0	0.0	0.0	0.0		0.0	*	0.0	8.6	20
	2014	*	*	6.3	5.3	5.0	7.7	5.6		0.0	*	5.0	8.5	20

NUMBER TESTED IN GRADE 4													
2012	1	7	20	27	28	11	20		16	12	28	475	
2013	2	4	14	19	20	12	15		16	4	20	452	
2014	1	3	16	19	20	13	18		15	5	20	449	

**PERCENTAGE ADVANCED (Level 3)**

Grade	Year	White	African Amer	Hispanic	Econ Disadv	Special Educ	LEP	At Risk	Migrant	Male	Female	All	District	Number Tested (All Students)
7	2012	*	8.3	0.0	0.0	2.2	0.0	2.4		2.9	0.0	2.2	2.7	45
	2013		6.7	4.2	5.3	4.9	5.0	5.6		6.9	0.0	4.9	6.3	41
	2014	*	0.0	4.5	7.7	6.4	5.3	4.7		6.1	7.1	6.4	6.3	47

NUMBER TESTED IN GRADE 7													
2012	5	12	27	42	45	21	41		34	11	45	586	
2013		15	24	38	41	20	36		29	12	41	509	
2014	5	19	22	39	47	19	43		33	14	47	599	

**AVERAGE PERCENTAGE OF ITEMS CORRECT BY REPORTING CATEGORY**

Grade	Year	REPORTING CATEGORY		
		1. Composition <sup>1</sup> GR 4: Personal Narrative GR 7: Expository	2. Revision	3. Editing
4	2012	1.4	44.4	61.4
	2013	1.7	35.7	44.7
	2014	1.8	38.6	46.3
7	2012	0.9	47.4	48.8
	2013	2.5	55.5	53.0
	2014	2.5	56.0	52.6

<sup>1</sup>Average score points (range 0-6). A STAAR M composition is rated twice on a scale of 0 to 3, and the ratings are summed to determine score points for the composition. Score point scale: 0=Non-scorable; 2=Very Limited; 3=between Very Limited and Basic; 4=Basic; 5=between Basic and Satisfactory; 6=Satisfactory

**PERCENTAGE SATISFACTORY (Levels 2 or 3)**

Grade	Year	White	African Amer	Hispanic	Econ Disadv	Special Educ	LEP	At Risk	Migrant	Male	Female	All	District	Number Tested (All Students)
3	2012	*	*	38.5	26.3	30.0	36.4	29.4		37.5	*	30.0	52.0	20
	2013	*	*	43.8	42.9	40.9	45.5	38.1		47.1	*	40.9	64.4	22
	2014			88.9	44.4	64.7	66.7	*	66.7	58.3	83.3	66.7	64.2	18
4	2012	*	33.3	62.5	54.5	52.2	50.0	56.3		54.5	50.0	52.2	61.2	23
	2013	*	*	33.3	38.1	36.4	35.7	41.2		47.1	*	36.4	61.7	22
	2014	*	*	43.8	47.4	50.0	38.5	44.4		53.3	*	50.0	70.3	20
5	2012	*	43.8	41.7	41.4	43.3	30.0	36.8		36.8	54.5	43.3	60.6	30
	2013	*	70.0	76.5	75.9	74.2	75.0	77.8		75.0	72.7	74.2	77.2	31
	2014		50.0	72.2	75.0	68.0	70.6	68.0		56.3	88.9	68.0	79.1	25
3-5	2012	*	37.0	48.8	41.4	42.5	37.9	40.4		41.3	44.4	42.5	58.7	73
	2013	71.4	52.6	52.1	54.9	53.3	51.4	55.4		57.4	42.9	53.3	69.1	75
	2014	*	72.2	55.8	62.5	61.9	51.4	60.7		55.8	75.0	61.9	72.7	63

NUMBER TESTED IN GRADES 3-5													
2012	3	27	41	70	73	29	52		46	27	73	1,354	
2013	7	19	48	71	75	37	65		54	21	75	1,433	
2014	1	18	43	56	63	35	61		43	20	63	1,378	



**PERCENTAGE SATISFACTORY (Levels 2 or 3)**

Grade	Year	White	African Amer	Hispanic	Econ Disadv	Special Educ	LEP	At Risk	Migrant	Male	Female	All	District	Number Tested (All Students)
6	2012	*	53.3	33.3	42.1	42.1	35.0	41.9		53.8	16.7	42.1	46.2	38
	2013	*	60.0	63.2	60.0	58.3	60.0	60.7		52.0	72.7	58.3	54.3	36
	2014	*	50.0	57.1	57.7	53.1	61.1	53.3		52.4	54.5	53.1	52.0	32
7	2012	*	27.3	69.6	59.5	59.0	81.3	57.1		56.7	66.7	59.0	50.5	39
	2013		33.3	54.5	46.9	45.7	57.9	46.7		41.7	54.5	45.7	49.4	35
	2014	*	21.1	57.9	42.9	39.5	62.5	42.5		30.0	61.5	39.5	48.8	43
8	2012	*	23.1	58.8	43.3	43.8	69.2	46.4		42.9	45.5	43.8	46.2	32
	2013	*	88.9	79.3	80.5	81.4	83.3	78.9		83.9	75.0	81.4	71.4	43
	2014		58.3	69.6	67.7	66.7	66.7	64.7		70.8	58.3	66.7	71.0	36
6-8	2012	85.7	35.9	54.1	48.6	48.6	59.2	48.9		51.9	40.6	48.6	47.7	109
	2013	66.7	58.3	67.1	63.9	63.2	67.3	63.5		61.3	67.6	63.2	58.5	114
	2014	*	39.0	61.9	55.4	52.3	63.3	52.9		49.3	58.3	52.3	56.7	111

NUMBER TESTED IN GRADES 6-8													
2012	7	39	61	105	109	49	94		77	32	109	1,554	
2013	6	36	70	108	114	52	96		80	34	114	1,659	
2014	5	41	63	92	111	49	104		75	36	111	1,684	

**NUMBER UNSATISFACTORY (Level 1)**

Grade	Year	White	African Amer	Hispanic	Econ Disadv	Special Educ	LEP	At Risk	Migrant	Male	Female	All	District	Number Tested (All Students)
3	2012	*	*	8	14	14	7	12		10	*	14	157	20
	2013	*	*	9	12	13	6	13		9	*	13	120	22
	2014		1	5	6	6	*	6		5	1	6	113	18
4	2012	*	4	6	10	11	4	7		5	6	11	182	23
	2013	*	*	10	13	14	9	10		9	*	14	181	22
	2014	*	*	9	10	10	8	10		7	*	10	138	20
5	2012	*	9	7	17	17	7	12		12	5	17	220	30
	2013	*	3	4	7	8	3	6		5	3	8	142	31
	2014		3	5	5	8	5	8		7	1	8	125	25
3-5	2012	*	17	21	41	42	18	31		27	15	42	559	73
	2013	2	9	23	32	35	18	29		23	12	35	443	75
	2014	*	5	19	21	24	17	24		19	5	24	376	63

NUMBER TESTED IN GRADES 3-5													
2012	3	27	41	70	73	29	52		46	27	73	1,354	
2013	7	19	48	71	75	37	65		54	21	75	1,433	
2014	1	18	43	56	63	35	61		43	20	63	1,378	

**NUMBER UNSATISFACTORY (Level 1)**

Grade	Year	White	African Amer	Hispanic	Econ Disadv	Special Educ	LEP	At Risk	Migrant	Male	Female	All	District	Number Tested (All Students)
6	2012	*	7	14	22	22	13	18		12	10	22	276	38
	2013	*	6	7	14	15	6	11		12	3	15	272	36
	2014	*	5	9	11	15	7	14		10	5	15	271	32
7	2012	*	8	7	15	16	3	15		13	3	16	276	39
	2013		8	10	17	19	8	16		14	5	19	257	35
	2014	*	15	8	20	26	6	23		21	5	26	310	43
8	2012	*	10	7	17	18	4	15		12	6	18	260	32
	2013	*	1	6	8	8	3	8		5	3	8	159	43
	2014		5	7	10	12	5	12		7	5	12	149	36
6-8	2012	1	25	28	54	56	20	48		37	19	56	812	109
	2013	2	15	23	39	42	17	35		31	11	42	688	114
	2014	*	25	24	41	53	18	49		38	15	53	730	111

NUMBER TESTED IN GRADES 6-8													
2012	7	39	61	105	109	49	94		77	32	109	1,554	
2013	6	36	70	108	114	52	96		80	34	114	1,659	
2014	5	41	63	92	111	49	104		75	36	111	1,684	

PERCENTAGE ADVANCED (Level 3)

Grade	Year	White	African Amer	Hispanic	Econ Disadv	Special Educ	LEP	At Risk	Migrant	Male	Female	All	District	Number Tested (All Students)
3	2012	*	*	7.7	5.3	5.0	9.1	5.9		6.3	*	5.0	4.0	20
	2013	*	*	6.3	4.8	4.5	0.0	0.0		5.9	*	4.5	7.4	22
	2014		11.1	0.0	5.9	5.6	*	5.6		0.0	16.7	5.6	7.6	18
4	2012	*	0.0	0.0	0.0	0.0	0.0	0.0		0.0	0.0	0.0	1.7	23
	2013	*	*	0.0	0.0	0.0	0.0	0.0		0.0	*	0.0	4.7	22
	2014	*	*	0.0	0.0	0.0	0.0	0.0		0.0	*	0.0	6.5	20
5	2012	*	0.0	0.0	0.0	0.0	0.0	0.0		0.0	0.0	0.0	0.7	30
	2013	*	0.0	5.9	3.4	3.2	8.3	3.7		5.0	0.0	3.2	3.9	31
	2014		0.0	5.6	5.0	4.0	5.9	4.0		6.3	0.0	4.0	6.0	25
3-5	2012	*	0.0	2.4	1.4	1.4	3.4	1.9		2.2	0.0	1.4	1.8	73
	2013	0.0	0.0	4.2	2.8	2.7	2.7	1.5		3.7	0.0	2.7	5.0	75
	2014	*	5.6	2.3	3.6	3.2	2.9	3.3		2.3	5.0	3.2	6.5	63

NUMBER TESTED IN GRADE 3-5													
2012	3	27	41	70	73	29	52		46	27	73	1,354	
2013	7	19	48	71	75	37	65		54	21	75	1,433	
2014	1	18	43	56	63	35	61		43	20	63	1,378	

PERCENTAGE ADVANCED (Level 3)

Grade	Year	White	African Amer	Hispanic	Econ Disadv	Special Educ	LEP	At Risk	Migrant	Male	Female	All	District	Number Tested (All Students)
6	2012	*	6.7	0.0	2.6	2.6	5.0	3.2		3.8	0.0	2.6	5.5	38
	2013	*	20.0	10.5	14.3	13.9	0.0	17.9		16.0	9.1	13.9	4.9	36
	2014	*	0.0	4.8	3.8	3.1	5.6	3.3		4.8	0.0	3.1	3.4	32
7	2012	*	0.0	0.0	0.0	0.0	0.0	0.0		0.0	0.0	0.0	1.1	39
	2013		0.0	4.5	3.1	2.9	5.3	3.3		4.2	0.0	2.9	3.0	35
	2014	*	5.3	5.3	5.7	4.7	6.3	5.0		3.3	7.7	4.7	2.3	43
8	2012	*	0.0	0.0	0.0	0.0	0.0	0.0		0.0	0.0	0.0	1.2	32
	2013	*	0.0	3.4	2.4	2.3	5.6	2.6		3.2	0.0	2.3	2.2	43
	2014		0.0	0.0	0.0	0.0	0.0	0.0		0.0	0.0	0.0	1.9	36
6-8	2012	0.0	2.6	0.0	1.0	0.9	2.0	1.1		1.3	0.0	0.9	2.6	109
	2013	0.0	8.3	5.7	6.5	6.1	3.8	7.3		7.5	2.9	6.1	3.4	114
	2014	*	2.4	3.2	3.3	2.7	4.1	2.9		2.7	2.8	2.7	2.6	111

NUMBER TESTED IN GRADE 6-8													
2012	7	39	61	105	109	49	94		77	32	109	1,554	
2013	6	36	70	108	114	52	96		80	34	114	1,659	
2014	5	41	63	92	111	49	104		75	36	111	1,684	

## AVERAGE PERCENTAGE OF ITEMS CORRECT BY REPORTING CATEGORY

Grade	Year	REPORTING CATEGORY				
		1. Numbers, Operations, and Quantitative Reasoning	2. Patterns, Relationships, and Algebraic Reasoning	3. Geometry and Spatial Reasoning	4. Measurement	5. Probability and Statistics
3	2012	47.3	34.2	47.9	45.0	43.0
	2013	53.8	53.0	54.5	41.7	55.5
	2014	57.7	67.6	70.6	54.6	70.0
4	2012	45.5	47.8	49.6	39.9	34.8
	2013	47.2	56.4	38.6	37.9	35.2
	2014	53.1	49.0	45.0	50.0	57.5
5	2012	37.6	34.7	41.1	40.0	35.9
	2013	53.5	45.8	48.9	50.0	48.0
	2014	51.1	48.8	44.0	58.0	45.8
3-5	2012	42.8	38.7	45.6	41.3	37.5
	2013	51.7	51.0	47.6	44.0	46.5
	2014	53.6	54.2	51.9	54.5	56.4

## AVERAGE PERCENTAGE OF ITEMS CORRECT BY REPORTING CATEGORY

Grade	Year	REPORTING CATEGORY				
		1. Numbers, Operations, and Quantitative Reasoning	2. Patterns, Relationships, and Algebraic Reasoning	3. Geometry and Spatial Reasoning	4. Measurement	5. Probability and Statistics
6	2012	38.5	36.1	38.6	34.2	41.7
	2013	48.6	48.3	53.7	38.0	60.6
	2014	46.4	40.3	51.6	30.7	58.9
7	2012	37.3	35.4	43.9	38.9	41.7
	2013	39.5	42.9	50.7	37.1	42.9
	2014	42.1	42.8	45.6	41.5	45.6
8	2012	33.1	40.3	31.8	31.9	37.9
	2013	42.8	52.0	47.3	51.6	58.4
	2014	41.7	49.5	49.1	46.9	55.2
6-8	2012	36.5	37.1	38.5	35.2	40.6
	2013	43.6	48.0	50.4	42.9	54.3
	2014	43.2	44.3	48.5	40.2	52.6

## PERCENTAGE SATISFACTORY (Levels 2 and 3)

Test	Year	White	African Amer	Hispanic	Econ Disadv	Special Educ	LEP	At Risk	Migrant	Male	Female	All	District
<b>ALGEBRA I</b>	<b>2012</b>	*	71.4	33.3	45.8	50.0	35.7	40.0		36.8	72.7	50.0	32.5
	<b>2013</b>	*	30.0	57.9	50.0	50.0	68.8	53.3		40.0	66.7	50.0	36.9
	<b>2014</b>	*	*	43.5	42.9	42.4	53.8	38.7		33.3	58.3	42.4	46.1
Tests Taken	<b>2012</b>	4	7	18	24	30	14	25		19	11	30	280
	<b>2013</b>	1	10	19	30	32	16	30		20	12	32	339
	<b>2014</b>	5	5	23	21	33	13	31		21	12	33	360



## NUMBER UNSATISFACTORY (Level 1)

Test	Year	White	African Amer	Hispanic	Econ Disadv	Special Educ	LEP	At Risk	Migrant	Male	Female	All	District
<b>ALGEBRA I</b>	<b>2012</b>	*	2	12	13	15	9	15		12	3	15	189
	<b>2013</b>	*	7	8	15	16	5	14		12	4	16	214
	<b>2014</b>	*	*	13	12	19	6	19		14	5	19	194
Tests Taken	<b>2012</b>	4	7	18	24	30	14	25		19	11	30	280
	<b>2013</b>	1	10	19	30	32	16	30		20	12	32	339
	<b>2014</b>	5	5	23	21	33	13	31		21	12	33	360

## PERCENTAGE ADVANCED (Level 3)

Test	Year	White	African Amer	Hispanic	Econ Disadv	Special Educ	LEP	At Risk	Migrant	Male	Female	All	District
<b>ALGEBRA I</b>	<b>2012</b>	*	0.0	5.6	4.2	3.3	0.0	0.0		5.3	0.0	3.3	0.4
	<b>2013</b>	*	0.0	0.0	0.0	0.0	0.0	0.0		0.0	0.0	0.0	0.0
	<b>2014</b>	*	*	0.0	0.0	0.0	0.0	0.0		0.0	0.0	0.0	1.4
Tests Taken	<b>2012</b>	4	7	18	24	30	14	25		19	11	30	280
	<b>2013</b>	1	10	19	30	32	16	30		20	12	32	339
	<b>2014</b>	5	5	23	21	33	13	31		21	12	33	360

## AVERAGE PERCENTAGE OF ITEMS CORRECT BY REPORTING CATEGORY

<b>ALGEBRA I</b>	1. Functional Relationships	2. Properties and Attributes of Functions	3. Linear Functions	4. Linear Equations and Inequalities	5. Quadratic and Other Nonlinear Functions
<b>2012</b>	36.7	34.0	43.9	46.3	34.3
<b>2013</b>	47.9	49.7	44.0	40.6	44.2
<b>2014</b>	51.5	40.3	43.2	35.2	43.3

**PERCENTAGE SATISFACTORY (Levels 2 or 3)**

Grade	Year	White	African Amer	Hispanic	Econ Disadv	Special Educ	LEP	At Risk	Migrant	Male	Female	All	District	Number Tested (All Students)
5	2012		58.3	46.2	50.0	51.9	41.7	47.4		68.8	27.3	51.9	48.8	27
	2013	*	50.0	57.1	54.5	54.2	54.5	54.5		50.0	62.5	54.2	58.1	24
	2014		16.7	30.8	26.7	26.3	33.3	26.3		30.8	16.7	26.3	55.5	19

NUMBER TESTED IN GRADE 5													
2012		12	13	26	27	12	19		16	11	27	531	
2013	2	8	14	22	24	11	22		16	8	24	540	
2014		6	13	15	19	12	19		13	6	19	501	

**PERCENTAGE SATISFACTORY (Levels 2 or 3)**

Grade	Year	White	African Amer	Hispanic	Econ Disadv	Special Educ	LEP	At Risk	Migrant	Male	Female	All	District	Number Tested (All Students)
8	2012		46.7	57.1	55.2	54.8	53.8	51.9		50.0	61.5	54.8	58.2	31
	2013	*	28.6	42.3	38.9	39.5	37.5	35.3		34.6	50.0	39.5	59.3	38
	2014		50.0	71.4	62.1	61.8	53.3	59.4		60.9	63.6	61.8	63.5	34

NUMBER TESTED IN GRADE 8													
2012		15	14	29	31	13	27		18	13	31	457	
2013	5	7	26	36	38	16	34		26	12	38	526	
2014		12	21	29	34	15	32		23	11	34	474	

**NUMBER UNSATISFACTORY (Level 1)**

Grade	Year	White	African Amer	Hispanic	Econ Disadv	Special Educ	LEP	At Risk	Migrant	Male	Female	All	District	Number Tested (All Students)
5	2012		5	7	13	13	7	10		5	8	13	272	27
	2013	*	4	6	10	11	5	10		8	3	11	226	24
	2014		5	9	11	14	8	14		9	5	14	223	19

NUMBER TESTED IN GRADE 5													
2012		12	13	26	27	12	19		16	11	27	531	
2013	2	8	14	22	24	11	22		16	8	24	540	
2014		6	13	15	19	12	19		13	6	19	501	

**NUMBER UNSATISFACTORY (Level 1)**

Grade	Year	White	African Amer	Hispanic	Econ Disadv	Special Educ	LEP	At Risk	Migrant	Male	Female	All	District	Number Tested (All Students)
8	2012		8	6	13	14	6	13		9	5	14	191	31
	2013	*	5	15	22	23	10	22		17	6	23	214	38
	2014		6	6	11	13	7	13		9	4	13	173	34

NUMBER TESTED IN GRADE 8													
2012		15	14	29	31	13	27		18	13	31	457	
2013	5	7	26	36	38	16	34		26	12	38	526	
2014		12	21	29	34	15	32		23	11	34	474	

**PERCENTAGE ADVANCED (Level 3)**

Grade	Year	White	African Amer	Hispanic	Econ Disadv	Special Educ	LEP	At Risk	Migrant	Male	Female	All	District	Number Tested (All Students)
5	2012	*	0.0	15.4	7.7	7.4	16.7	10.5		12.5	0.0	7.4	6.2	27
	2013	*	12.5	7.1	9.1	8.3	0.0	9.1		12.5	0.0	8.3	6.1	24
	2014		0.0	15.4	13.3	10.5	16.7	10.5		15.4	0.0	10.5	7.6	19

NUMBER TESTED IN GRADE 5													
2012	1	12	13	26	27	12	19		16	11	27	531	
2013	2	8	14	22	24	11	22		16	8	24	540	
2014		6	13	15	19	12	19		13	6	19	501	



**PERCENTAGE ADVANCED (Level 3)**

Grade	Year	White	African Amer	Hispanic	Econ Disadv	Special Educ	LEP	At Risk	Migrant	Male	Female	All	District	Number Tested (All Students)
8	2012	*	0.0	0.0	0.0	0.0	0.0	0.0		0.0	0.0	0.0	0.4	31
	2013	*	0.0	0.0	0.0	0.0	0.0	0.0		0.0	0.0	0.0	2.5	38
	2014		0.0	0.0	0.0	0.0	0.0	0.0		0.0	0.0	0.0	3.8	34

NUMBER TESTED IN GRADE 8													
2012	1	15	14	29	31	13	27		18	13	31	457	
2013	5	7	26	36	38	16	34		26	12	38	526	
2014		12	21	29	34	15	32		23	11	34	474	

## AVERAGE PERCENTAGE OF ITEMS CORRECT BY REPORTING CATEGORY

Grade	Year	REPORTING CATEGORY			
		1. Matter and Energy	2. Force, Motion, and Energy	3. Earth and Space	4. Organisms and Environments
5	2012	58.6	57.9	58.1	58.6
	2013	66.7	73.4	55.8	65.5
	2014	46.5	63.8	50.0	54.5
8	2012	45.7	52.6	53.7	44.6
	2013	51.4	56.3	53.3	47.1
	2014	61.5	59.7	55.1	55.9

## PERCENTAGE SATISFACTORY (Levels 2 and 3)

Test	Year	White	African Amer	Hispanic	Econ Disadv	Special Educ	LEP	At Risk	Migrant	Male	Female	All	District
<b>BIOLOGY</b>	<b>2012</b>	*	33.3	47.4	39.1	40.7	46.7	45.8		37.5	45.5	40.7	31.7
	<b>2013</b>		44.4	78.6	59.1	62.5	90.9	59.1		42.9	90.0	62.5	42.6
	<b>2014</b>	*	*	66.7	55.0	58.6	66.7	57.1		50.0	72.7	58.6	46.6
Tests Taken	<b>2012</b>	4	6	19	23	27	15	24		16	11	27	262
	<b>2013</b>		9	14	22	24	11	22		14	10	24	331
	<b>2014</b>	4	4	21	20	29	12	28		18	11	29	350

## NUMBER UNSATISFACTORY (Level 1)

Test	Year	White	African Amer	Hispanic	Econ Disadv	Special Educ	LEP	At Risk	Migrant	Male	Female	All	District
<b>BIOLOGY</b>	<b>2012</b>	*	4	10	14	16	8	13		10	6	16	179
	<b>2013</b>		5	3	9	9	1	9		8	1	9	190
	<b>2014</b>	*	*	7	9	12	4	12		9	3	12	187
Tests Taken	<b>2012</b>	4	6	19	23	27	15	24		16	11	27	262
	<b>2013</b>		9	14	22	24	11	22		14	10	24	331
	<b>2014</b>	4	4	21	20	29	12	28		18	11	29	350

## PERCENTAGE ADVANCED (Level 3)

Test	Year	White	African Amer	Hispanic	Econ Disadv	Special Educ	LEP	At Risk	Migrant	Male	Female	All	District
<b>BIOLOGY</b>	<b>2012</b>	*	0.0	0.0	0.0	0.0	0.0	0.0		0.0	0.0	0.0	0.0
	<b>2013</b>		0.0	0.0	0.0	0.0	0.0	0.0		0.0	0.0	0.0	0.0
	<b>2014</b>	*	*	0.0	0.0	0.0	0.0	0.0		0.0	0.0	0.0	1.1
Tests Taken	<b>2012</b>	2	6	19	23	27	15	24		16	11	27	262
	<b>2013</b>		9	14	22	24	11	22		14	10	24	331
	<b>2014</b>	4	4	21	20	29	12	28		18	11	29	350

## AVERAGE PERCENTAGE OF ITEMS CORRECT BY REPORTING CATEGORY

<b>BIOLOGY</b>	1. Cell Structure and Function	2. Mechanisms of Genetics	3. Biological Evolution and Classification	4. Biological Processes and Systems	5. Interdependence within Environmental Systems
<b>2012</b>	43.6	43.5	43.5	42.8	42.0
<b>2013</b>	50.9	48.4	51.0	55.1	44.4
<b>2014</b>	54.4	46.6	57.8	51.3	46.0

**PERCENTAGE SATISFACTORY (Levels 2 or 3)**

Grade	Year	White	African Amer	Hispanic	Econ Disadv	Special Educ	LEP	At Risk	Migrant	Male	Female	All	District	Number Tested (All Students)
8	2012	*	50.0	42.9	46.7	43.8	46.2	37.0		27.8	64.3	43.8	52.3	32
	2013	*	28.6	76.0	63.9	64.9	68.8	63.6		56.0	83.3	64.9	59.5	37
	2014		50.0	66.7	58.6	58.8	46.7	56.3		60.9	54.5	58.8	59.3	34

NUMBER TESTED IN GRADE 8													
2012	1	16	14	30	32	13	27		18	14	32	451	
2013	5	7	25	36	37	16	33		25	12	37	516	
2014		12	21	29	34	15	32		23	11	34	479	

## NUMBER UNSATISFACTORY (Level 1)

Grade	Year	White	African Amer	Hispanic	Econ Disadv	Special Educ	LEP	At Risk	Migrant	Male	Female	All	District	Number Tested (All Students)
8	2012	*	8	8	16	18	7	17		13	5	18	215	32
	2013	*	5	6	13	13	5	12		11	2	13	209	37
	2014		6	7	12	14	8	14		9	5	14	195	34

NUMBER TESTED IN GRADE8													
2012	1	16	14	30	32	13	27		18	14	32	451	
2013	5	7	25	36	37	16	33		25	12	37	516	
2014		12	21	29	34	15	32		23	11	34	479	



**PERCENTAGE ADVANCED (Level 3)**

Grade	Year	White	African Amer	Hispanic	Econ Disadv	Special Educ	LEP	At Risk	Migrant	Male	Female	All	District	Number Tested (All Students)
8	2012	*	0.0	0.0	0.0	0.0	0.0	0.0		0.0	0.0	0.0	2.9	32
	2013	*	0.0	4.0	2.8	2.7	0.0	0.0		4.0	0.0	2.7	1.9	37
	2014		0.0	0.0	0.0	0.0	0.0	0.0		0.0	0.0	0.0	3.5	34

NUMBER TESTED IN GRADE 8													
2012	1	16	14	30	32	13	27		18	14	32	451	
2013	5	7	25	36	37	16	33		25	12	37	516	
2014		12	21	29	34	15	32		23	11	34	479	

## AVERAGE PERCENTAGE OF ITEMS CORRECT BY REPORTING CATEGORY

Grade	Year	REPORTING CATEGORY			
		1. History	2. Geography and Culture	3. Government and Citizenship	4. Economics, Science, Technology, and Society
8	2012	42.4	38.4	42.8	45.3
	2013	49.0	59.2	53.5	61.3
	2014	53.9	55.3	41.5	59.3

## PERCENTAGE SATISFACTORY (Levels 2 and 3)

Test	Year	White	African Amer	Hispanic	Econ Disadv	Special Educ	LEP	At Risk	Migrant	Male	Female	All	District
U.S. HISTORY	2012												
	2013												
	2014	*	*	0.0	0.0	0.0	0.0	0.0		0.0	0.0	0.0	0.0
Tests Taken	2012												
	2013												
	2014	1	4	10	10	15	8	15		9	6	15	226

## NUMBER UNSATISFACTORY (Level 1)

Test	Year	White	African Amer	Hispanic	Econ Disadv	Special Educ	LEP	At Risk	Migrant	Male	Female	All	District
U.S. HISTORY	2012												
	2013												
	2014	*	*	10	10	15	8	15		9	6	15	226
Tests Taken	2012												
	2013												
	2014	1	4	10	10	15	8	15		9	6	15	226

## PERCENTAGE ADVANCED (Level 3)

Test	Year	White	African Amer	Hispanic	Econ Disadv	Special Educ	LEP	At Risk	Migrant	Male	Female	All	District
U.S. HISTORY	2012												
	2013												
	2014	*	*	0.0	0.0	0.0	0.0	0.0		0.0	0.0	0.0	0.0
Tests Taken	2012												
	2013												
	2014	1	4	10	10	15	8	15		9	6	15	226

## AVERAGE PERCENTAGE OF ITEMS CORRECT BY REPORTING CATEGORY

U.S. HISTORY	1. History	2. Geography and Culture	3. Government and Citizenship	4. Economics, Science, Technology, and Society
2012				
2013				
2014	40.3	43.0	37.5	38.5

PERCENTAGE AT OR ABOVE THE 40th PERCENTILE on the ITBS

Grade	Year	READING TOTAL (**READING PROFILE TOTAL )				
		At Risk	Not At Risk	All	District	Number Tested (All Students)
K**	2012	51.5	61.9	60.5	62.2	531
	2013	56.5	64.4	63.6	60.8	492
	2014	59.5	74.1	72.5	60.7	404
1	2012	35.2	60.4	55.5	55.4	532
	2013	41.9	59.1	56.2	55.0	500
	2014	37.3	56.3	53.6	47.2	504
2	2012	40.7	79.4	58.0	49.8	486
	2013	32.8	76.8	53.3	50.2	507
	2014	24.4	73.1	49.2	44.4	486
K-2	2012	41.0	64.7	58.0	55.8	1,018
	2013	39.4	64.9	59.1	56.7	1,499
	2014	34.3	68.5	60.9	53.1	1,394
# Tested (GR K-2)	2012	441	1,111	1,549	21,034	
	2013	449	1,547	1,991	28,878	
	2014	397	1,405	1,798	28,063	

Grade	Year	MATHEMATICS TOTAL (**MATHEMATICS )				
		At Risk	Not At Risk	All	District	Number Tested (All Students)
K**	2012	46.9	62.7	54.7	55.1	932
	2013	51.7	63.8	57.4	55.1	954
	2014	53.6	70.6	62.3	55.0	902
1	2012	49.8	59.1	53.9	50.7	972
	2013	54.3	61.8	57.9	52.0	895
	2014	41.5	56.8	48.5	46.0	967
2	2012	57.5	78.0	62.5	57.9	907
	2013	57.9	77.8	62.9	56.2	949
	2014	47.7	76.6	56.0	52.0	863
K-2	2012	52.1	64.3	57.0	54.5	2,811
	2013	55.0	66.0	59.4	54.4	2,798
	2014	47.3	66.6	55.4	51.0	2,732
# Tested (GR K-2)	2012	1,691	1,124	2,811	40,477	
	2013	1,675	1,128	2,798	40,966	
	2014	1,584	1,151	2,732	40,233	

## PERCENTAGE AT OR ABOVE THE 40th PERCENTILE

Grade	Year	White	African Amer	Hispanic	Econ Disadv	Special Educ	LEP	At Risk	Migrant	Male	Female	All	District	Number Tested (All Students)
K**	2012	78.9	54.4	55.4	54.1	39.1	61.7	51.5	*	56.3	65.4	60.5	62.2	531
	2013	83.9	57.0	59.7	58.2	33.3	53.3	56.5		58.3	69.0	63.6	60.8	492
	2014	82.1	69.0	71.4	72.6	46.2	54.2	59.5		71.9	73.1	72.5	60.7	404
1	2012	79.3	47.0	51.8	51.0	25.0	39.6	35.2		52.1	59.3	55.5	55.4	532
	2013	77.9	48.3	54.2	48.5	32.0	40.8	41.9		57.6	54.4	56.2	55.0	500
	2014	65.6	45.3	53.0	50.0	24.2	41.2	37.3		52.3	55.0	53.6	47.2	504
2	2012	81.6	45.6	57.7	51.6	31.0	44.4	40.7		54.4	62.2	58.0	49.8	486
	2013	79.3	40.5	51.5	49.9	13.5	40.9	32.8		51.6	55.1	53.3	50.2	507
	2014	71.2	35.5	49.6	42.8	18.8	35.2	24.4		49.6	48.7	49.2	44.4	486
1-2	2012	80.4	46.4	54.8	51.3	27.9	41.9	39.1		53.2	60.7	56.7	52.7	1,018
	2013	80.5	48.0	55.2	52.1	24.1	43.9	37.5		55.8	59.8	57.6	55.4	1,499
	2014	71.6	48.8	57.3	54.2	28.6	41.1	31.3		56.8	58.3	57.5	50.6	1,394
# Tested (GR K-2)	2012	163	289	515	819	61	93	373		547	471	1,018	14,095	
	2013	256	433	745	1,208	83	123	403		803	696	1,499	21,640	
	2014	215	385	737	1,099	91	112	355		727	667	1,394	21,214	

\*\*Kindergarten subscore is Reading Profile Total; no Reading Total subscore available.



## NUMBER AT OR ABOVE THE 80th PERCENTILE

Grade	Year	White	African Amer	Hispanic	Econ Disadv	Special Educ	LEP	At Risk	Migrant	Male	Female	All	District	Number Tested (All Students)
K**	2012	47	28	60	82	1	6	10	*	78	66	144	2,027	531
	2013	44	28	64	91	6	4	6		62	82	144	2,108	492
	2014	32	33	76	116	3	5	11		76	74	150	1,938	404
1	2012	54	36	61	103	3	2	13		76	84	160	1,963	532
	2013	43	29	69	76	3	6	10		87	59	146	2,017	500
	2014	44	17	58	74	3	3	7		63	62	125	1,561	504
2	2012	35	16	37	50	3	3	10		45	49	94	1,017	486
	2013	39	18	27	49	2	2	8		48	40	88	1,045	507
	2014	30	12	39	43	0	5	10		55	32	87	950	486
1-2	2012	89	52	98	153	6	5	23		121	133	254	2,981	1,018
	2013	126	75	160	216	11	12	24		197	181	378	5,171	1,499
	2014	106	62	173	233	6	13	28		194	168	362	4,449	1,394
# Tested (GR K-2)	2012	163	289	515	819	61	93	373		547	471	1,018	14,095	
	2013	256	433	745	1,208	83	123	403		803	696	1,499	21,640	
	2014	215	385	737	1,099	91	112	355		727	667	1,394	21,214	

\*\*Kindergarten subscore is Reading Profile Total; no Reading Total subscore available.

## PERCENTAGE AT OR ABOVE THE 40th PERCENTILE

Grade	Year	White	African Amer	Hispanic	Econ Disadv	Special Educ	LEP	At Risk	Migrant	Male	Female	All	District	Number Tested (All Students)
K**	2012	76.1	55.4	50.6	51.2	60.7	47.3	46.9	*	52.4	57.3	54.7	55.1	932
	2013	84.1	52.3	54.5	54.4	37.9	51.7	51.7		56.7	58.2	57.4	55.1	954
	2014	80.0	56.8	60.0	60.0	34.3	53.2	53.6		62.6	62.0	62.3	55.0	902
1	2012	76.7	41.5	54.0	51.0	26.7	51.1	49.8		55.2	52.5	53.9	50.7	972
	2013	80.2	45.9	57.5	53.9	50.0	54.9	54.3		59.8	55.7	57.9	52.0	895
	2014	76.8	38.3	46.5	45.9	31.1	41.6	41.5		49.2	47.7	48.5	46.0	967
2	2012	80.8	44.1	63.6	59.1	32.7	64.0	57.5		63.7	61.2	62.5	57.9	907
	2013	83.9	43.1	65.0	61.5	16.7	66.0	57.9		64.3	61.4	62.9	56.2	949
	2014	73.1	38.8	57.4	52.6	30.2	52.7	47.7		59.0	52.7	56.0	52.0	863
K-2	2012	77.7	47.1	56.1	53.7	36.8	54.1	52.1	*	57.0	56.9	57.0	54.5	2,811
	2013	82.8	46.8	58.9	56.7	32.1	57.6	55.0		60.3	58.5	59.4	54.4	2,798
	2014	77.1	44.8	54.3	52.6	31.7	48.8	47.3		56.6	54.2	55.4	51.0	2,732
# Tested (GR K-2)	2012	260	448	2,024	2,445	125	1,376	1,691	1	1,484	1,327	2,811	40,477	
	2013	262	436	2,034	2,480	109	1,386	1,675		1,459	1,339	2,798	40,966	
	2014	262	411	1,997	2,337	123	1,335	1,584		1,395	1,337	2,732	40,233	

\*\*Kindergarten test is Mathematics; no Mathematics Total score available.

## NUMBER AT OR ABOVE THE 80th PERCENTILE

Grade	Year	White	African Amer	Hispanic	Econ Disadv	Special Educ	LEP	At Risk	Migrant	Male	Female	All	District	Number Tested (All Students)
K**	2012	29	21	86	104	1	47	46	*	73	75	148	2,472	932
	2013	32	24	119	147	2	70	75		87	98	185	2,594	954
	2014	51	30	147	177	6	70	74		111	124	235	2,598	902
1	2012	37	23	142	162	2	98	102		120	90	210	2,473	972
	2013	40	24	132	140	6	85	90		127	73	200	2,609	895
	2014	40	13	101	107	6	55	56		91	66	157	2,166	967
2	2012	33	16	179	183	6	123	140		134	101	235	2,843	907
	2013	41	19	167	189	4	122	137		130	101	231	2,626	949
	2014	32	19	122	131	5	67	78		114	67	181	2,408	863
K-2	2012	99	60	407	449	9	268	288	*	327	266	593	7,788	2,811
	2013	113	67	418	476	12	277	302		344	272	616	7,829	2,798
	2014	123	62	370	415	17	192	208		316	257	573	7,172	2,732
# Tested (GR K-2)	2012	260	448	2,024	2,445	125	1,376	1,691	1	1,484	1,327	2,811	40,477	
	2013	262	436	2,034	2,480	109	1,386	1,675		1,459	1,339	2,798	40,966	
	2014	262	411	1,997	2,337	123	1,335	1,584		1,395	1,337	2,732	40,233	

\*\*Kindergarten test is Mathematics; no Mathematics Total score available.

## PERCENTAGE AT OR ABOVE THE 40th PERCENTILE

Grade	Year	White	African Amer	Hispanic	Econ Disadv	Special Educ	LEP	At Risk	Migrant	Male	Female	All	District	Number Tested (All Students)
1	2012	66.7	46.0	66.8	61.5	39.5	68.1	65.1		62.7	63.8	63.2	62.5	970
	2013	77.8	45.3	68.7	62.8	51.6	68.8	67.3		65.0	65.6	65.3	63.6	895
	2014	74.7	38.3	60.4	57.9	43.2	60.5	59.7		59.4	57.8	58.6	58.6	967
2	2012	74.0	45.6	68.9	64.2	52.2	71.6	64.3		65.9	66.4	66.1	63.6	898
	2013	79.3	47.8	69.6	66.3	27.7	70.0	63.9		65.1	68.4	66.7	60.6	948
	2014	65.7	44.5	65.3	59.9	41.5	61.5	57.6		65.6	58.9	62.4	59.2	861
1-2	2012	70.1	45.8	67.8	62.8	46.1	69.8	64.7		64.2	65.0	64.6	63.0	1,868
	2013	78.6	46.6	69.1	64.6	37.2	69.4	65.2		65.0	67.0	66.0	62.1	1,843
	2014	71.0	41.5	62.7	58.8	42.4	60.9	58.5		62.3	58.3	60.4	58.9	1,828
# Tested (GR 1-2)	2012	167	288	1,359	1,639	89	930	1,214		984	884	1,868	26,880	
	2013	173	309	1,319	1,644	78	903	1,174		967	876	1,843	27,003	
	2014	162	270	1,354	1,579	85	914	1,143		947	881	1,828	26,955	

## NUMBER AT OR ABOVE THE 80th PERCENTILE

Grade	Year	White	African Amer	Hispanic	Econ Disadv	Special Educ	LEP	At Risk	Migrant	Male	Female	All	District	Number Tested (All Students)
1	2012	35	35	235	257	11	168	181		178	134	312	4,060	970
	2013	33	33	232	250	8	165	170		177	129	306	4,150	895
	2014	36	19	206	220	9	136	147		144	120	264	3,708	967
2	2012	28	20	216	230	5	166	187		146	128	274	3,820	898
	2013	33	34	214	250	6	156	187		152	135	287	3,436	948
	2014	20	23	175	187	7	105	130		125	102	227	3,288	861
1-2	2012	63	55	451	487	16	334	368		324	262	586	7,880	1,868
	2013	66	67	446	500	14	321	357		329	264	593	7,586	1,843
	2014	56	42	381	407	16	241	277		269	222	491	6,996	1,828
# Tested (GR 1-2)	2012	167	288	1,359	1,639	89	930	1,214		984	884	1,868	26,880	
	2013	173	309	1,319	1,644	78	903	1,174		967	876	1,843	27,003	
	2014	162	270	1,354	1,579	85	914	1,143		947	881	1,828	26,955	

## PERCENTAGE AT OR ABOVE THE 40th PERCENTILE

Grade	Year	White	African Amer	Hispanic	Econ Disadv	Special Educ	LEP	At Risk	Migrant	Male	Female	All	District	Number Tested (All Students)
K	2012	*		92.0	91.9	*	92.4	92.5		90.8	93.3	92.0	89.9	363
	2013	*		89.1	89.5	71.4	89.1	89.1		87.4	90.9	89.1	89.7	458
	2014			93.5	93.8	66.7	93.4	93.4		91.1	95.9	93.5	88.6	385
1	2012	*		90.2	89.8	33.3	90.5	90.5		88.1	92.5	90.2	89.2	440
	2013	*		93.8	93.4	100.0	93.5	93.5		92.2	94.7	93.5	87.6	386
	2014	*		86.6	86.9	41.7	86.2	86.3		84.6	88.5	86.5	84.6	458
2	2012			94.1	94.2	52.6	94.1	94.1		91.9	96.5	94.1	93.3	410
	2013	*		94.6	94.5	63.6	94.8	94.8		93.7	95.6	94.6	93.6	427
	2014	*		97.2	97.4	83.3	97.2	97.2		97.2	97.3	97.2	91.8	361
K-2	2012	*		92.0	91.9	50.0	92.3	92.3		90.2	94.1	92.1	90.8	1,213
	2013	*		92.3	92.4	76.0	92.4	92.4		91.0	93.7	92.3	90.3	1,271
	2014	*		92.0	92.3	63.3	91.8	91.8		90.3	93.6	91.9	88.2	1,204
# Tested (GR K-2)	2012	5		1,206	1,166	36	1,193	1,201		621	592	1,213	18,911	
	2013	4		1,267	1,243	25	1,258	1,260		641	630	1,271	18,629	
	2014	3		1,201	1,165	30	1,183	1,188		607	597	1,204	18,008	

## NUMBER AT OR ABOVE THE 80th PERCENTILE

Grade	Year	White	African Amer	Hispanic	Econ Disadv	Special Educ	LEP	At Risk	Migrant	Male	Female	All	District	Number Tested (All Students)
K	2012	*		238	230	*	234	239		115	124	239	3,679	363
	2013	*		285	281	1	281	282		139	147	286	3,798	458
	2014			251	246	2	245	245		115	136	251	3,313	385
1	2012	*		192	183	0	191	191		89	103	192	2,437	440
	2013	*		158	154	1	155	156		62	96	158	2,394	386
	2014	*		161	159	0	159	159		73	89	162	2,123	458
2	2012			211	204	4	208	210		91	120	211	2,934	410
	2013	*		233	227	1	235	235		106	128	234	2,899	427
	2014	*		179	173	2	176	178		80	99	179	2,596	361
K-2	2012	*		641	617	6	633	640		295	347	642	9,050	1,213
	2013	*		676	662	3	671	673		307	371	678	9,091	1,271
	2014	*		591	578	4	580	582		268	324	592	8,032	1,204
# Tested (GR K-2)	2012	5		1,206	1,166	36	1,193	1,201		621	592	1,213	18,911	
	2013	4		1,267	1,243	25	1,258	1,260		641	630	1,271	18,629	
	2014	3		1,201	1,165	30	1,183	1,188		607	597	1,204	18,008	

## PERCENTAGE DEMONSTRATING IMPROVEMENT

Grade	Level 1 in 2013		Level 2 in 2013		Level 3 in 2013		Levels 1-3 in 2013	
	Number Tested Both Years	Percentage Improved in 2014	Number Tested Both Years	Percentage Improved in 2014	Number Tested Both Years	Percentage Improved in 2014	Number Tested Both Years	Percentage Improved in 2014
5	8	25.0	2	*	0		10	40.0
6	14	50.0	30	70.0	0		44	63.6
7	15	46.7	29	51.7	0		44	50.0
8	15	33.3	9	33.3	0		24	33.3
9	33	12.1	15	40.0	0		48	20.8
10	16	50.0	10	70.0	0		26	57.7
11	6	50.0	13	46.2	0		19	47.4
12	2	*	3	*	0		5	*
ALL	109	33.0	111	55.0	0		220	44.1



**PERFORMANCE IN 2014**

Grade 2013-14  (N Rated)	Domain:	Listening		Speaking		Writing		Reading		Composite	
	2014 Level	N	%	N	%	N	%	N	%	N	%
KN  (417)	Beginning	264	63.3	291	69.8	391	93.8	385	92.5	367	88.2
	Intermediate	86	20.6	74	17.7	19	4.6	18	4.3	35	8.4
	Advanced	38	9.1	28	6.7	4	1.0	9	2.2	10	2.4
	Advanced High	29	7.0	24	5.8	3	0.7	4	1.0	4	1.0
1  (487)	Beginning	91	18.7	180	37.0	308	63.2	267	54.8	262	53.8
	Intermediate	216	44.4	176	36.1	128	26.3	140	28.7	147	30.2
	Advanced	113	23.2	79	16.2	37	7.6	59	12.1	58	11.9
	Advanced High	67	13.8	52	10.7	14	2.9	21	4.3	20	4.1
2  (434)	Beginning	39	9.0	65	15.0	101	23.4	86	19.9	57	13.3
	Intermediate	120	27.8	157	36.3	174	40.4	182	42.0	174	40.5
	Advanced	168	38.9	134	31.0	113	26.2	126	29.1	155	36.0
	Advanced High	105	24.3	76	17.6	43	10.0	39	9.0	44	10.2
3  (480)	Beginning	32	6.7	56	11.7	86	18.0	100	20.8	58	12.2
	Intermediate	173	36.3	192	40.3	205	43.0	129	26.9	162	34.0
	Advanced	177	37.1	147	30.8	128	26.8	149	31.0	177	37.1
	Advanced High	95	19.9	82	17.2	58	12.2	102	21.3	80	16.8
4  (432)	Beginning	18	4.2	37	8.6	47	11.0	77	17.9	38	8.9
	Intermediate	101	23.5	122	28.4	120	28.0	151	35.1	132	30.8
	Advanced	141	32.8	133	30.9	149	34.7	143	33.3	165	38.6
	Advanced High	170	39.5	138	32.1	113	26.3	59	13.7	93	21.7

**PROGRESSION FROM  
2013 TO 2014**

Number Rated Both Years  N (%) Progressed	2014 Level	2013 Level			
		Beg	Int	Adv	Adv High
-	Beginning	-			
	Intermediate	-	-		
	Advanced	-	-	-	
	Advanced High	-	-	-	
469  206 (43.9%)	Beginning	251			
	Intermediate	133	11		
	Advanced	42	12	1	
	Advanced High	13	3	3	
396  251 (63.4%)	Beginning	44			
	Intermediate	99	66		
	Advanced	64	46	35	
	Advanced High	9	13	20	
455  141 (31.0%)	Beginning	49			
	Intermediate	20	136		
	Advanced	0	42	129	
	Advanced High	1	2	76	
402  138 (34.3%)	Beginning	27			
	Intermediate	23	104		
	Advanced	1	24	133	
	Advanced High	0	1	89	

**PERFORMANCE IN 2014**

Grade 2013-14 (N Rated)	Domain:	Listening		Speaking		Writing		Reading		Composite	
	2014 Level	N	%	N	%	N	%	N	%	N	%
5 (418)	Beginning	8	1.9	14	3.3	20	4.8	24	5.8	13	3.1
	Intermediate	25	6.0	58	13.9	114	27.3	89	21.3	70	16.8
	Advanced	152	36.4	142	34.0	154	36.8	165	39.6	181	43.4
	Advanced High	233	55.7	204	48.8	130	31.1	139	33.3	153	36.7
6 (363)	Beginning	9	2.5	10	2.8	21	5.9	33	9.1	12	3.4
	Intermediate	62	17.3	66	18.4	100	28.0	140	38.6	93	26.1
	Advanced	121	33.7	128	35.7	134	37.5	139	38.3	171	47.9
	Advanced High	167	46.5	155	43.2	102	28.6	51	14.0	81	22.7
7 (301)	Beginning	7	2.5	8	2.9	30	10.1	34	11.4	12	4.4
	Intermediate	43	15.6	55	20.0	92	31.1	94	31.5	69	25.4
	Advanced	122	44.4	116	42.2	108	36.5	113	37.9	128	47.1
	Advanced High	103	37.5	96	34.9	66	22.3	57	19.1	63	23.2
8 (247)	Beginning	1	0.4	4	1.6	11	4.5	15	6.2	7	2.9
	Intermediate	33	13.5	31	12.7	58	24.0	53	21.8	37	15.4
	Advanced	97	39.8	93	38.1	97	40.1	119	49.0	115	47.9
	Advanced High	113	46.3	116	47.5	76	31.4	56	23.0	81	33.8
9 (185)	Beginning	28	15.4	34	18.7	38	20.9	34	19.3	25	14.5
	Intermediate	44	24.2	43	23.6	54	29.7	42	23.9	35	20.2
	Advanced	53	29.1	51	28.0	46	25.3	66	37.5	63	36.4
	Advanced High	57	31.3	54	29.7	44	24.2	34	19.3	50	28.9

**PROGRESSION FROM  
2013 TO 2014**

Number Rated Both Years N (%) Progressed	2014 Level	2013 Level			
		Beg	Int	Adv	Adv High
393 229 (58.3%)	Beginning	6			
	Intermediate	17	44		
	Advanced	3	59	114	
	Advanced High	0	4	146	
334 106 (31.7%)	Beginning	6			
	Intermediate	8	76		
	Advanced	0	18	146	
	Advanced High	0	0	80	
249 68 (27.3%)	Beginning	9			
	Intermediate	4	58		
	Advanced	0	8	114	
	Advanced High	0	1	55	
211 88 (41.7%)	Beginning	3			
	Intermediate	4	27		
	Advanced	0	7	93	
	Advanced High	0	1	76	
114 50 (43.9%)	Beginning	1			
	Intermediate	7	15		
	Advanced	1	2	48	
	Advanced High	0	0	40	

**PERFORMANCE IN 2014**

Grade 2013-14  (N Rated)	Domain:	Listening		Speaking		Writing		Reading		Composite	
	2014 Level	N	%	N	%	N	%	N	%	N	%
<b>10</b>  (121)	Beginning	0	0.0	2	1.7	2	1.7	9	8.0	1	0.9
	Intermediate	22	18.3	31	25.8	38	31.7	25	22.3	24	21.6
	Advanced	58	48.3	47	39.2	50	41.7	61	54.5	62	55.9
	Advanced High	40	33.3	40	33.3	30	25.0	17	15.2	24	21.6
<b>11</b>  (99)	Beginning	1	1.0	1	1.0	3	3.1	5	5.2	2	2.1
	Intermediate	6	6.2	11	11.3	16	16.5	18	18.8	9	9.6
	Advanced	26	26.8	25	25.8	32	33.0	46	47.9	39	41.5
	Advanced High	64	66.0	60	61.9	46	47.4	27	28.1	44	46.8
<b>12</b>  (56)	Beginning	2	3.6	2	3.6	2	3.6	6	11.3	2	3.8
	Intermediate	1	1.8	2	3.6	7	12.5	14	26.4	4	7.5
	Advanced	31	55.4	28	50.0	25	44.6	24	45.3	29	54.7
	Advanced High	22	39.3	24	42.9	22	39.3	9	17.0	18	34.0
<b>ALL</b>  (4,040)	Beginning	500	12.5	704	17.6	1,060	26.4	1,075	26.8	856	21.6
	Intermediate	932	23.3	1,018	25.5	1,125	28.1	1,095	27.3	991	25.1
	Advanced	1,297	32.5	1,151	28.8	1,077	26.9	1,219	30.4	1,353	34.2
	Advanced High	1,265	31.7	1,121	28.1	747	18.6	615	15.4	755	19.1

**PROGRESSION FROM  
2013 TO 2014**

Number Rated Both Years  N (%) Progressed	2014 Level	2013 Level			
		Beg	Int	Adv	Adv High
<b>55</b>  <b>20 (36.4%)</b>	Beginning	0			
	Intermediate	4	12		
	Advanced	1	3	23	
	Advanced High	0	1	11	
<b>74</b>  <b>36 (48.6%)</b>	Beginning	0			
	Intermediate	0	7		
	Advanced	0	2	31	
	Advanced High	1	1	32	
<b>43</b>  <b>23 (53.5%)</b>	Beginning	2			
	Intermediate	1	2		
	Advanced	0	5	16	
	Advanced High	0	3	14	
<b>3,196</b>  <b>1,356 (42.4%)</b>	Beginning	399			
	Intermediate	320	558		
	Advanced	112	228	883	
	Advanced High	24	30	642	

■ Indicates students who progressed at least one level from 2013 to 2014.