

DATA PACKET

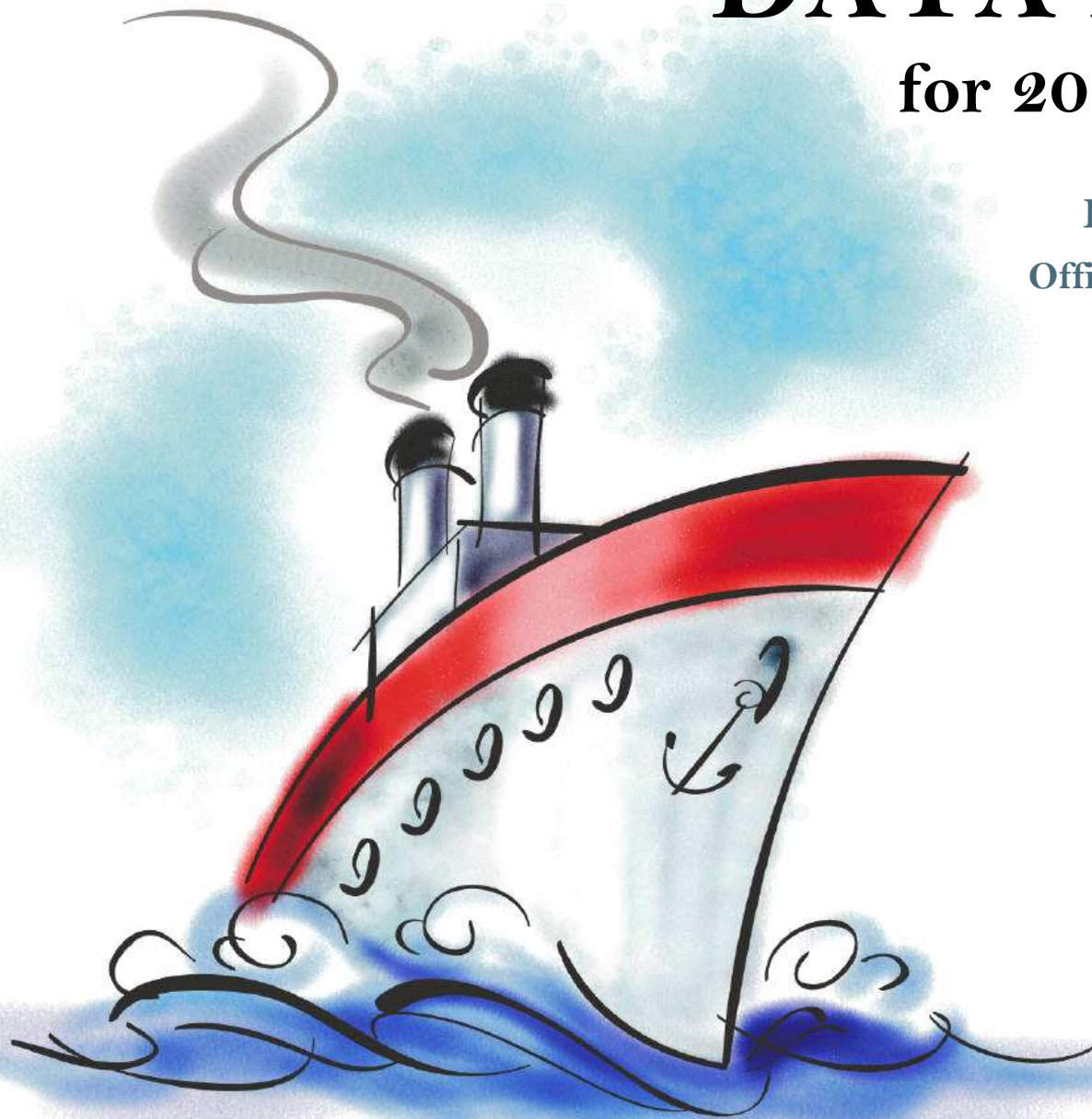
for 2014-15 planning

Evaluation & Assessment
Office of Institutional Research
<http://mydata.dallasisd.org>
OIR@dallasisd.org

September 5, 2014

School Number 15

**SEAGOVILLE
HIGH SCHOOL**



Dallas Independent School District

2. Contents Table of Contents

STUDENTS AND STAFF

- 6. Summary Summary of Student and Teacher Statistics
- 8. Enroll (2) Enrollment Statistics by Select Student Group
- 10. Teachers Teacher Statistics

STAAR (English)

- 11. Reading (EOC) .. STAAR EOC Reading
- 19. Science (EOC) ... STAAR EOC Science

STAAR L

- 27. Math (EOC) STAAR L EOC Mathematics

STAAR M

- 31. Reading (EOC) .. STAAR M EOC Reading

ENGLISH PROFICIENCY

- 35. WMLS Woodcock-Muñoz Language Survey

COLLEGE READINESS

- 37. SAT/ACT SAT/ACT Average Scores for Seniors
- 39. AP Advanced Placement (AP) Exams

LOCAL ASSESSMENT

- 40. ACP Assessments of Course Performance

3. Notes Notes and Data Descriptions

- 7. Enroll (1) Enrollment Statistics by Ethnicity
- 9. Attendance Student Attendance Statistics

- 15. Math (EOC) STAAR EOC Mathematics
- 23. SS (EOC) STAAR EOC Social Studies

36. TELPAS Texas English Language Proficiency Assessment System

38. PSAT PSAT Average Scores

2013-14 SCHOOL SUMMARY

- Student percentages are computed as the percentage of total student enrollment.
- Additional statistics are available in ENROLLMENT and TEACHER reports.
- Race/ethnic categories are based on the newest federal standards for ethnicity and race reporting, though some categories have been combined because of small group sizes. Students reporting their ethnicity as “Hispanic” are not counted in any race category.
- “Economically disadvantaged” students are those who qualify for free or reduced-price lunch through the federal government's program.
- Teacher demographics and assignments are from the district's Public Education Information Management System (PEIMS) submission to the TEA.

ENROLLMENT

- Statistics are based on the school's enrollment at the end of the fifth six-weeks grading period.
- “Economically disadvantaged” students are those receiving free or reduced-price lunches.
- “New” students were new to the district in 2013-14. They are counted as new if not enrolled in a district campus before the last day of the 2012-13 school year.
- The “retention rate” is the percentage of students in the same grade at the end of the fifth six-weeks grading period for both 2012-13 and 2013-14.

ATTENDANCE

- Statistics are based on student attendance through the end of the sixth six-weeks grading period (the end of the school year).
- “Average daily membership” is the total number of school days students were ENROLLED divided by the number of school days in the year.
- The “average daily attendance” number (N) is the total number of school days students were IN ATTENDANCE divided by the number of school days in the year. The “average daily attendance” percentage (%) is the average attendance rate. For each student, the number of days attended is divided by the number of days enrolled. This rate is then averaged across students.
- The number (N) of “yearly transactions” is the total number of transfer and withdrawal transactions in the school year. The percentage (%) is the number of transactions divided by “average daily membership,” which gives (on average) the percentage of the membership associated with a transaction.
- “Continuously enrolled” students are enrolled and in attendance for a minimum number of instructional days in at least one course at the school between the beginning of the school year and the first day of the main STAAR testing period. The minimum number varies depending on the school year's calendar, but is typically around 130 days.
- The “stability rate” is the number of continuously enrolled students divided by “average daily membership.”

TEACHERS

- Teacher demographics and assignments are from the district's Public Education Information Management System (PEIMS) submission to the TEA.
- Teacher absences counted towards the average DO NOT include vacation days (coded as VAC in personnel database).
- Retention rate for a school year is computed with numerator “# of teachers assigned to the school both that year and the year prior” and denominator “# of teachers assigned to the school for the prior year.” That is, the retention rate is the percentage of the prior year's teachers who continued at the school.

STAAR, STAAR L, and STAAR M

- Cells marked with an asterisk (*) indicate five or fewer students were tested. Blank cells indicate no students were tested.
- Student group assignments are from the district's Public Education Information Management System (PEIMS) submission to the TEA.
- STAAR statistics are based on results from standard STAAR only. STAAR L and STAAR M statistics are computed separately, following TEA reporting practice.
- “Percentage Satisfactory” is the percentage of students achieving Level 2 (Satisfactory) or Level 3 (Advanced).
- Statistics by reporting category are averages for all students (across student groups and genders).
- An “average percentage correct” is computed as follows: for each student, divide the number of items correctly answered by the total number of items in the test section, then average the resulting percentages across all students. For short answers on EOC English tests, an “average rating” is presented; STAAR EOC short answers are rated on a scale of 0 to 3. For written compositions on writing tests, “average score points” is presented. Additional details provided in report footnotes.
- EOC statistics are based on first administration scores from the fall and spring administrations.
- Beginning in 2014, EOC Reading and EOC Writing tests were replaced with EOC English tests.

TELPAS

- Students are counted as having tested if any one of the four domains is rated. Because a TELPAS composite rating is not assigned to a student unless all four domains are rated, the number of TELPAS composite ratings may be smaller than the number tested.
- If a student's composite rating did not increase at least one level from 2013 to 2014, the TEA did not report the 2013 composite rating.
- If a student is rated as advanced high in 2014, the TEA does not differentiate between the advanced and advanced high levels from 2013.

COLLEGE READINESS

- Cells marked with an asterisk (*) indicate five or fewer students were tested. Blank cells indicate no students were tested.
- For SAT and ACT, “Percent Tested” is computed with “Number Tested” as numerator and, as denominator, Grade 12 “Enrollment” as reported in Enrollment (1) and Enrollment (2) reports. For PSAT, the denominator for “Percent Tested” is grade-level enrollment as reported in Enrollment reports.
- Score summaries for SAT and ACT contain all scores available for the school year at the time of publication.
- The SAT and ACT are administered throughout the school year by The College Board and ACT, Inc. A student takes the SAT or ACT at the time and location of her choice, and she may take either test multiple times. If a student has results from multiple administrations, only the latest is used.
- SAT scores range from 200 to 800. ACT scores range from 0 to 36.
- SAT College and Career Readiness Benchmarks are the same for each subject (critical reading, mathematics, and writing): 500. The SAT benchmark indicates a 65 percent likelihood of achieving a B- average or higher during the first year of college. ACT's College Readiness Benchmarks are the minimum scores that indicate a 50 percent chance of earning a B or better (and 75 percent chance of earning a C or better) in the corresponding college course. The ACT benchmarks are available for four subject-area tests. They are English: 18, reading: 21, mathematics: 22, and science: 24.
- PSAT scores range from 20 to 80. PSAT is administered once each year in October. District students taking PSAT are tested at their schools. Statistics for a grade level are based on all students in that grade level in the fall with a PSAT score for that year. (Students' scores will be used in multiple statistics if they took the PSAT in multiple years.)
- PSAT/NMSQT College and Career Readiness Benchmarks are the scores associated with a 65 percent likelihood of achieving a B- first-year college GPA. The College Board has determined PSAT benchmark scores separately for grades 10 and 11 in each subject. For grade 10, the benchmarks are critical reading: 42, mathematics: 44, writing: 42. For grade 11, the benchmarks are critical reading: 45, mathematics: 47, writing: 45. There are no benchmarks for grade 9.
- AP scores range from 1 to 5; a minimum of 3 is needed to pass.

ACP

- Cells marked with an asterisk (*) indicate five or fewer students were tested. Blank cells indicate no students were tested.
- The ACPs are semester exams administered in grades K-12. Not all courses have ACPs. In MIDDLE and HIGH school, ACP results account for a portion of students' final semester grades (10% and 15% respectively). “Average course mark (no ACP)” is computed from semester grades before factoring in ACP scores. In ELEMENTARY school, ACP results account for 5% of students' semester grades for core courses; course-grade statistics are not reported in data packets for elementary grades.
- Raw scores on the ACPs (percentage of items correct) are scaled each year to maintain similar annual passing rates for the district.
- A scale score of at least 70 percent is required to pass an ACP. A course mark of at least 70 percent is required to pass a course.
- Statistics are computed separately for Semester 1 and Semester 2 tests; time of administration during the school year is not relevant. Results from tests written for different school years are not combined.

STUDENT ENROLLMENT

Grade	Enrollment
9	339
10	327
11	287
12	224
ALL	1,177

STUDENT AND TEACHER RACE/ETHNICITY

Ethnicity/Race	Students		Teachers	
	Number	Percent	Number	Percent
Black/African American	237	20.1	24	30.8
American Indian/Alaska Native	4	0.3	*	*
Asian/Hawaiian/Pacific Islander	2	0.2	*	*
Hispanic	713	60.6	6	7.7
White	204	17.3	40	51.3
Multiple	16	1.4	7	9.0
Other* (teachers only)	—	—	1	1.3
Not reported (students only)	0	0.0	—	—

*For teachers, "Other" category includes American Indian/Alaska Native and Asian/Hawaiian/Pacific Islander.

SELECT STUDENT GROUP ENROLLMENT

Group	Number	Percent
At-Risk	941	79.9
Economically disadvantaged	991	84.2
Limited English proficient (LEP)	257	21.8
Special education	143	12.1
Talented and Gifted (TAG)	101	8.6

Grade	Year	Enrollment	African American		American Indian		Asian		Hispanic		White		Multiple category	
			N	%	N	%	N	%	N	%	N	%	N	%
9	2012	324	69	21.3	0	0.0	0	0.0	189	58.3	64	19.8	2	0.6
	2013	345	61	17.7	3	0.9	0	0.0	213	61.7	63	18.3	4	1.2
	2014	339	62	18.3	1	0.3	1	0.3	212	62.5	57	16.8	6	1.8
10	2012	256	65	25.4	1	0.4	1	0.4	137	53.5	49	19.1	1	0.4
	2013	288	64	22.2	0	0.0	0	0.0	171	59.4	51	17.7	2	0.7
	2014	327	55	16.8	2	0.6	0	0.0	206	63.0	57	17.4	7	2.1
11	2012	203	35	17.2	3	1.5	1	0.5	110	54.2	53	26.1	0	0.0
	2013	245	57	23.3	1	0.4	1	0.4	130	53.1	52	21.2	3	1.2
	2014	287	63	22.0	0	0.0	0	0.0	175	61.0	48	16.7	1	0.3
12	2012	213	48	22.5	1	0.5	1	0.5	116	54.5	46	21.6	1	0.5
	2013	216	40	18.5	2	0.9	1	0.5	116	53.7	56	25.9	0	0.0
	2014	224	57	25.4	1	0.4	1	0.4	120	53.6	42	18.8	2	0.9
9-12	2012	996	217	21.8	5	0.5	3	0.3	552	55.4	212	21.3	4	0.4
	2013	1,094	222	20.3	6	0.5	2	0.2	630	57.6	222	20.3	9	0.8
	2014	1,177	237	20.1	4	0.3	2	0.2	713	60.6	204	17.3	16	1.4

Grade	Year	Enrollment	Economically Disadvantaged		LEP		Special Education		At Risk		TAG		New (to District)		Gender		Retention Rate (%)
			N	%	N	%	N	%	N	%	N	%	N	%	% Male	% Female	
9	2012	324	273	84.3	68	21.0	40	12.3	224	69.1	45	13.9	36	11.1	48.1	51.9	4.3
	2013	345	300	87.0	78	22.6	54	15.7	235	68.1	23	6.7	48	13.9	55.4	44.6	3.2
	2014	339	284	83.8	89	26.3	35	10.3	270	79.6	25	7.4	51	15.0	49.6	50.4	2.1
10	2012	256	214	83.6	46	18.0	37	14.5	195	76.2	16	6.3	28	10.9	51.2	48.8	1.6
	2013	288	235	81.6	52	18.1	36	12.5	197	68.4	39	13.5	22	7.6	47.9	52.1	0.3
	2014	327	282	86.2	72	22.0	39	11.9	268	82.0	23	7.0	32	9.8	53.5	46.5	1.8
11	2012	203	156	76.8	23	11.3	24	11.8	142	70.0	30	14.8	20	9.9	55.7	44.3	0.5
	2013	245	199	81.2	46	18.8	34	13.9	193	78.8	19	7.8	16	6.5	51.8	48.2	0.8
	2014	287	237	82.6	55	19.2	37	12.9	226	78.7	37	12.9	18	6.3	49.8	50.2	1.4
12	2012	213	170	79.8	41	19.2	32	15.0	173	81.2	22	10.3	13	6.1	52.6	47.4	5.6
	2013	216	166	76.9	26	12.0	36	16.7	157	72.7	27	12.5	12	5.6	55.1	44.9	6.0
	2014	224	188	83.9	41	18.3	32	14.3	177	79.0	16	7.1	9	4.0	53.1	46.9	2.7
9-12	2012	996	813	81.6	178	17.9	133	13.4	734	73.7	113	11.3	97	9.7	51.4	48.6	3.1
	2013	1,094	900	82.3	202	18.5	160	14.6	782	71.5	108	9.9	98	9.0	52.6	47.4	2.5
	2014	1,177	991	84.2	257	21.8	143	12.1	941	79.9	101	8.6	110	9.3	51.4	48.6	2.0

Grade	Year	Average Daily Membership		Average Daily Attendance				Yearly Transactions			Continuously Enrolled		Stability Rate	
		N	District	N	%	District N	District %	N	%	District %	N	District	%	District
9	2012	330	10,922	304	92.1	10,196	93.3	64	19.4	27.8	258	8,726	78.1	79.9
	2013	343	11,153	327	95.2	10,499	94.1	95	27.7	28.3	299	9,388	87.2	84.2
	2014	343	10,850	327	95.6	10,242	94.4	87	25.4	28.4	283	9,091	82.6	83.8
10	2012	260	9,007	237	91.4	8,431	93.6	78	30.0	20.6	179	7,332	68.9	81.4
	2013	295	9,331	283	95.8	8,812	94.4	64	21.7	20.5	256	8,042	86.8	86.2
	2014	333	9,898	317	95.4	9,367	94.6	68	20.4	20.3	283	8,628	85.1	87.2
11	2012	211	8,913	193	91.7	8,306	93.2	38	18.0	15.9	154	7,319	73.0	82.1
	2013	254	8,457	240	94.4	7,949	94.0	55	21.6	18.9	222	7,295	87.4	86.3
	2014	293	8,467	280	95.4	8,005	94.5	36	12.3	18.1	266	7,476	90.7	88.3
12	2012	220	8,178	201	91.5	7,571	92.6	28	12.8	12.6	161	6,742	73.3	82.4
	2013	208	8,199	199	95.6	7,661	93.4	26	12.5	14.9	194	7,269	93.2	88.7
	2014	231	7,886	217	94.0	7,407	93.9	32	13.8	15.2	206	7,027	89.1	89.1
9-12	2012	1,021	37,021	936	91.7	34,504	93.2	208	20.4	19.8	752	30,119	73.7	81.4
	2013	1,100	37,140	1,048	95.3	34,922	94.0	240	21.8	21.2	971	31,994	88.3	86.1
	2014	1,200	37,101	1,142	95.2	35,021	94.4	223	18.6	21.1	1,038	32,222	86.5	86.8

Teachers: 78

DISTRIBUTIONS

Ethnicity/Race	Number	Percentage
African American	24	30.8
Hispanic	6	7.7
White	40	51.3
Multiple	7	9.0
Other	1	1.3

Gender	Number	Percentage
Female	48	61.5
Male	30	38.5

ATTENDANCE / RETENTION

	Average Absences	Retention Rate
2011-12	8.5	—
2012-13	7.2	81.7
2013-14	7.2	64.4

YEARS EXPERIENCE

Years	Number	Percentage
Beginning (0)	18	23.1
1	4	5.1
2	2	2.6
3	3	3.8
4	4	5.1
5	1	1.3
1-3	9	11.5
More than 3	51	65.4
1 - 5	14	17.9
6 - 10	18	23.1
11 - 20	15	19.2
More than 20	13	16.7

PERCENTAGE SATISFACTORY (Levels 2 and 3)

Test	Year	White	African Amer	Hispanic	Econ Disadv	Special Educ	LEP	At Risk	Migrant	Male	Female	All	District
ENGLISH I	2012												
	2013												
	2014	45.6	42.4	38.1	38.1	10.1	22.3	29.3		31.9	48.6	39.8	50.9
Tests Taken	2012												
	2013												
	2014	79	99	344	431	69	148	427		282	251	533	13,789
ENGLISH II	2012												
	2013												
	2014	54.4	32.8	43.1	40.6	12.2	23.5	32.2		38.8	50.0	44.0	54.8
Tests Taken	2012												
	2013												
	2014	68	64	246	298	41	81	292		206	180	386	10,943

NUMBER UNSATISFACTORY (Level 1)

Test	Year	White	African Amer	Hispanic	Econ Disadv	Special Educ	LEP	At Risk	Migrant	Male	Female	All	District
ENGLISH I	2012												
	2013												
	2014	43	57	213	267	62	115	302		192	129	321	6,774
Tests Taken	2012												
	2013												
	2014	79	99	344	431	69	148	427		282	251	533	13,789
ENGLISH II	2012												
	2013												
	2014	31	43	140	177	36	62	198		126	90	216	4,948
Tests Taken	2012												
	2013												
	2014	68	64	246	298	41	81	292		206	180	386	10,943

PERCENTAGE ADVANCED (Level 3)

Test	Year	White	African Amer	Hispanic	Econ Disadv	Special Educ	LEP	At Risk	Migrant	Male	Female	All	District
ENGLISH I	2012												
	2013												
	2014	0.0	1.0	0.9	0.9	0.0	0.0	0.0		0.0	1.6	0.8	3.2
Tests Taken	2012												
	2013												
	2014	79	99	344	431	69	148	427		282	251	533	13,789
ENGLISH II	2012												
	2013												
	2014	2.9	0.0	0.8	1.0	0.0	0.0	0.0		1.0	1.1	1.0	2.7
Tests Taken	2012												
	2013												
	2014	68	64	246	298	41	81	292		206	180	386	10,943

AVERAGE PERCENTAGE OF ITEMS CORRECT BY REPORTING CATEGORY

ENGLISH I	1. Understanding & Analysis Across Genres	1. Average Rating Short Answer #1 ¹	1. Average Rating Short Answer #2 ¹	2. Understanding & Analysis of Literary Texts	3. Understanding & Analysis of Informational Texts	4. Expository Composition ²	5. Revision	6. Editing
2012								
2013								
2014	59.0	1.0	1.2	52.3	54.8	3.8	62.2	46.4

ENGLISH II	1. Understanding & Analysis Across Genres	1. Average Rating Short Answer #1 ¹	1. Average Rating Short Answer #2 ¹	2. Understanding & Analysis of Literary Texts	3. Understanding & Analysis of Informational Texts	4. Persuasive Composition ²	5. Revision	6. Editing
2012								
2013								
2014	69.8	0.8	1.0	47.6	58.1	3.9	61.9	64.6

¹Short answer rating scale: 0=Insufficient; 1=Partially Sufficient; 2=Sufficient; 3=Exemplary

²Average score points (0-8). A composition is rated twice on a scale of 1 to 4, and the ratings are summed to determine score points for the composition. Score point scale: 0=Nonscorable; 2=Very Limited; 3=between Very Limited and Basic; 4=Basic; 5=between Basic and Satisfactory; 6=Satisfactory; 7=between Satisfactory and Accomplished; 8=Accomplished

PERCENTAGE SATISFACTORY (Levels 2 or 3)

Test	Year	White	African Amer	Hispanic	Econ Disadv	Special Educ	LEP	At Risk	Migrant	Male	Female	All	District
ALGEBRA I	2012	47.5	62.5	47.1	49.8	16.7	40.4	40.7		45.3	55.3	50.6	74.7
	2013	63.3	40.5	57.1	55.6	10.0	38.8	46.9		57.5	53.5	55.8	72.5
	2014	75.0	70.0	72.2	71.8	41.5	67.7	65.8		70.5	73.8	72.2	78.0
Tests Taken	2012	40	56	153	213	30	57	160		117	132	249	8,795
	2013	49	42	163	225	30	49	160		146	114	260	9,251
	2014	56	70	230	280	41	96	281		176	187	363	9,524

NUMBER UNSATISFACTORY (Level 1)

Test	Year	White	African Amer	Hispanic	Econ Disadv	Special Educ	LEP	At Risk	Migrant	Male	Female	All	District
ALGEBRA I	2012	21	21	81	107	25	34	99		64	59	123	2,226
	2013	18	25	70	100	27	30	85		62	53	115	2,540
	2014	14	21	64	79	24	31	96		52	49	101	2,099
Tests Taken	2012	40	56	153	213	30	57	160		117	132	249	8,795
	2013	49	42	163	225	30	49	160		146	114	260	9,251
	2014	56	70	230	280	41	96	281		176	187	363	9,524

PERCENTAGE ADVANCED (Level 3)

Test	Year	White	African Amer	Hispanic	Econ Disadv	Special Educ	LEP	At Risk	Migrant	Male	Female	All	District
ALGEBRA I	2012	0.0	0.0	0.0	0.0	0.0	0.0	0.0		0.0	0.0	0.0	7.0
	2013	0.0	0.0	0.0	0.0	0.0	0.0	0.0		0.0	0.0	0.0	8.6
	2014	1.8	2.9	3.0	2.5	0.0	3.1	1.4		2.8	2.7	2.8	9.9
Tests Taken	2012	40	56	153	213	30	57	167		117	132	249	8,795
	2013	49	42	163	225	30	49	160		146	114	260	9,251
	2014	56	70	230	280	41	96	281		176	187	363	9,524

AVERAGE PERCENTAGE OF ITEMS CORRECT BY REPORTING CATEGORY

ALGEBRA I	1. Functional Relationships	2. Properties and Attributes of Functions	3. Linear Functions	4. Linear Equations and Inequalities	5. Quadratic and Other Nonlinear Functions
2012	42.3	38.3	38.0	32.3	37.8
2013	43.3	37.6	37.0	46.1	33.5
2014	44.0	45.2	48.4	49.1	40.8

PERCENTAGE SATISFACTORY (Levels 2 and 3)

Test	Year	White	African Amer	Hispanic	Econ Disadv	Special Educ	LEP	At Risk	Migrant	Male	Female	All	District
BIOLOGY	2012	80.4	77.4	71.8	74.0	35.5	62.1	63.2		74.3	75.0	74.7	82.9
	2013	86.2	65.2	77.8	77.3	38.7	55.1	64.8		77.3	77.4	77.4	84.4
	2014	88.5	85.9	88.8	88.1	71.8	82.4	84.2		86.1	90.7	88.5	89.8
Tests Taken	2012	56	62	177	246	31	58	174		144	152	296	8,881
	2013	58	46	185	255	31	49	165		163	133	296	9,374
	2014	61	71	233	293	39	102	272		180	194	374	9,672

NUMBER UNSATISFACTORY (Level 1)

Test	Year	White	African Amer	Hispanic	Econ Disadv	Special Educ	LEP	At Risk	Migrant	Male	Female	All	District
BIOLOGY	2012	11	14	50	64	20	22	64		37	38	75	1,522
	2013	8	16	41	58	19	22	58		37	30	67	1,467
	2014	7	10	26	35	11	18	43		25	18	43	987
Tests Taken	2012	56	62	177	246	31	58	174		144	152	296	8,881
	2013	58	46	185	255	31	49	165		163	133	296	9,374
	2014	61	71	233	293	39	102	272		180	194	374	9,672

PERCENTAGE ADVANCED (Level 3)

Test	Year	White	African Amer	Hispanic	Econ Disadv	Special Educ	LEP	At Risk	Migrant	Male	Female	All	District
BIOLOGY	2012	7.1	0.0	0.0	1.2	3.2	0.0	0.0		2.1	0.7	1.4	4.8
	2013	6.9	0.0	1.6	2.4	0.0	0.0	0.6		3.7	0.8	2.4	7.5
	2014	14.8	1.4	3.9	4.4	0.0	1.0	0.4		5.0	5.7	5.3	7.5
Tests Taken	2012	56	62	177	246	31	58	174		144	152	296	8,881
	2013	58	46	185	255	31	49	165		163	133	296	9,374
	2014	61	71	233	293	39	102	272		180	194	374	9,672

AVERAGE PERCENTAGE OF ITEMS CORRECT BY REPORTING CATEGORY

BIOLOGY	1. Cell Structure and Function	2. Mechanisms of Genetics	3. Biological Evolution and Classification	4. Biological Processes and Systems	5. Interdependence within Environmental Systems
2012	43.1	44.0	51.7	38.9	49.8
2013	46.4	46.8	55.7	43.8	52.8
2014	50.2	57.7	63.2	58.4	50.4

PERCENTAGE SATISFACTORY (Levels 2 or 3)

Test	Year	White	African Amer	Hispanic	Econ Disadv	Special Educ	LEP	At Risk	Migrant	Male	Female	All	District
U.S. HISTORY	2012												*
	2013												90.2
	2014	95.3	90.2	89.5	90.0	60.9	78.0	86.7		94.9	86.4	90.6	92.0
Tests Taken	2012												4
	2013												51
	2014	43	61	171	210	23	50	188		136	140	276	7,801

NUMBER UNSATISFACTORY (Level 1)

Test	Year	White	African Amer	Hispanic	Econ Disadv	Special Educ	LEP	At Risk	Migrant	Male	Female	All	District
U.S. HISTORY	2012												*
	2013												5
	2014	2	6	18	21	9	11	25		7	19	26	625
Tests Taken	2012												4
	2013												51
	2014	43	61	171	210	23	50	188		136	140	276	7,801

PERCENTAGE ADVANCED (Level 3)

Test	Year	White	African Amer	Hispanic	Econ Disadv	Special Educ	LEP	At Risk	Migrant	Male	Female	All	District
U.S. HISTORY	2012												*
	2013												2.0
	2014	7.0	3.3	7.6	5.7	0.0	0.0	3.7		8.8	4.3	6.5	10.3
Tests Taken	2012												4
	2013												51
	2014	43	61	171	210	23	50	188		136	140	276	7,801

AVERAGE PERCENTAGE OF ITEMS CORRECT BY REPORTING CATEGORY

U.S. HISTORY	1. History	2. Geography and Culture	3. Government and Citizenship	4. Economics, Science, Technology, and Society
2012				
2013				
2014	53.6	65.0	60.7	63.8

PERCENTAGE SATISFACTORY (Levels 2 and 3)

Test	Year	White	African Amer	Hispanic	Econ Disadv	Special Educ	LEP	At Risk	Migrant	Male	Female	All	District
ALGEBRA I	2012												42.9
	2013			11.1	11.1		8.3	12.5		9.1	*	8.3	51.2
	2014			28.6	28.6		28.6	28.6		16.7	*	28.6	42.9
Tests Taken	2012												282
	2013			9	9		12	8		11	1	12	320
	2014			7	7		7	7		6	1	7	471

NUMBER UNSATISFACTORY (Level 1)

Test	Year	White	African Amer	Hispanic	Econ Disadv	Special Educ	LEP	At Risk	Migrant	Male	Female	All	District
ALGEBRA I	2012												161
	2013			8	8		11	7		10	*	11	156
	2014			5	5		5	5		5	*	5	269
Tests Taken	2012												282
	2013			9	9		12	8		11	1	12	320
	2014			7	7		7	7		6	1	7	471

PERCENTAGE ADVANCED (Level 3)

Test	Year	White	African Amer	Hispanic	Econ Disadv	Special Educ	LEP	At Risk	Migrant	Male	Female	All	District
ALGEBRA I	2012												2.5
	2013			0.0	0.0		0.0	0.0		0.0	*	0.0	4.1
	2014			0.0	0.0		0.0	0.0		0.0	*	0.0	2.3
Tests Taken	2012												282
	2013			9	9		12	8		11	1	12	320
	2014			7	7		7	7		6	1	7	471

AVERAGE PERCENTAGE OF ITEMS CORRECT BY REPORTING CATEGORY

ALGEBRA I	1. Functional Relationships	2. Properties and Attributes of Functions	3. Linear Functions	4. Linear Equations and Inequalities	5. Quadratic and Other Nonlinear Functions
2012					
2013	41.7	25.7	28.3	27.5	21.3
2014	35.7	35.7	30.5	17.1	42.9

PERCENTAGE SATISFACTORY (Levels 2 and 3)

Test	Year	White	African Amer	Hispanic	Econ Disadv	Special Educ	LEP	At Risk	Migrant	Male	Female	All	District
ENGLISH I	2012												
	2013												
	2014	*	*	*	0.0	11.1	*	11.1		0.0	*	11.1	50.6
Tests Taken	2012												
	2013												
	2014	1	3	4	8	9	3	9		6	3	9	405
ENGLISH II	2012												
	2013												
	2014		*	*	33.3	50.0	*	50.0		*	*	50.0	65.3
Tests Taken	2012												
	2013												
	2014		4	3	6	8	2	8		5	3	8	340

NUMBER UNSATISFACTORY (Level 1)

Test	Year	White	African Amer	Hispanic	Econ Disadv	Special Educ	LEP	At Risk	Migrant	Male	Female	All	District
ENGLISH I	2012												
	2013												
	2014	*	*	*	8	8	*	8		6	*	8	200
Tests Taken	2012												
	2013												
	2014	1	3	4	8	9	3	9		6	3	9	405
ENGLISH II	2012												
	2013												
	2014		*	*	4	4	*	4		*	*	4	118
Tests Taken	2012												
	2013												
	2014		4	3	6	8	2	8		5	3	8	340

PERCENTAGE ADVANCED (Level 3)

Test	Year	White	African Amer	Hispanic	Econ Disadv	Special Educ	LEP	At Risk	Migrant	Male	Female	All	District
ENGLISH I	2012												
	2013												
	2014	*	*	*	0.0	0.0	*	0.0		0.0	*	0.0	3.5
Tests Taken	2012												
	2013												
	2014	1	3	4	8	9	3	9		6	3	9	405
ENGLISH II	2012												
	2013												
	2014		*	*	0.0	0.0	*	0.0		*	*	0.0	12.6
Tests Taken	2012												
	2013												
	2014		4	3	6	8	2	8		5	3	8	340

AVERAGE PERCENTAGE OF ITEMS CORRECT BY REPORTING CATEGORY

ENGLISH I	1. Understanding & Analysis Across Genres	2. Understanding & Analysis of Literary Texts	3. Understanding & Analysis of Informational Texts	4. Literary Composition ¹	5. Revision	6. Editing
2012						
2013						
2014	55.6	39.5	39.5	1.6	35.8	48.1

ENGLISH II	1. Understanding & Analysis Across Genres	2. Understanding & Analysis of Literary Texts	3. Understanding & Analysis of Informational Texts	4. Expository Composition ¹	5. Revision	6. Editing
2012						
2013						
2014	56.3	41.7	56.9	2.4	37.5	50.0

¹Average score points (range 0-6). A STAAR M composition is rated twice on a scale of 0 to 3, and the ratings are summed to determine score points for the composition. Score point scale: 0=Non-scorable; 2=Very Limited; 3=between Very Limited and Basic; 4=Basic; 5=between Basic and Satisfactory; 6=Satisfactory

PERCENTAGE DEMONSTRATING IMPROVEMENT

Grade	Level 1 in 2013		Level 2 in 2013		Level 3 in 2013		Levels 1-3 in 2013	
	Number Tested Both Years	Percentage Improved in 2014	Number Tested Both Years	Percentage Improved in 2014	Number Tested Both Years	Percentage Improved in 2014	Number Tested Both Years	Percentage Improved in 2014
9	5	*	8	25.0	0		13	23.1
10	7	42.9	10	50.0	0		17	47.1
11	0		4	*	0		4	*
12	0		2	*	0		2	*
ALL	12	33.3	24	45.8	0		36	41.7

PERFORMANCE IN 2014

Grade 2013-14 (N Rated)	Domain:	Listening		Speaking		Writing		Reading		Composite	
	2014 Level	N	%	N	%	N	%	N	%	N	%
9 (84)	Beginning	5	6.0	6	7.1	3	3.6	8	9.5	5	6.0
	Intermediate	9	10.7	15	17.9	19	22.6	21	25.0	10	11.9
	Advanced	53	63.1	38	45.2	46	54.8	41	48.8	53	63.1
	Advanced High	17	20.2	25	29.8	16	19.0	14	16.7	16	19.0
10 (70)	Beginning	2	2.9	2	2.9	1	1.4	8	11.6	2	2.9
	Intermediate	10	14.3	12	17.1	17	24.3	24	34.8	16	23.2
	Advanced	42	60.0	52	74.3	40	57.1	29	42.0	42	60.9
	Advanced High	16	22.9	4	5.7	12	17.1	8	11.6	9	13.0
11 (55)	Beginning	0	0.0	0	0.0	1	1.8	4	7.3	1	1.8
	Intermediate	7	12.7	7	12.7	6	10.9	13	23.6	6	10.9
	Advanced	20	36.4	19	34.5	25	45.5	24	43.6	23	41.8
	Advanced High	28	50.9	29	52.7	23	41.8	14	25.5	25	45.5
12 (38)	Beginning	0	0.0	0	0.0	0	0.0	0	0.0	0	0.0
	Intermediate	0	0.0	0	0.0	2	5.3	7	18.9	0	0.0
	Advanced	6	15.8	7	18.4	10	26.3	16	43.2	12	32.4
	Advanced High	32	84.2	31	81.6	26	68.4	14	37.8	25	67.6
ALL (247)	Beginning	7	2.8	8	3.2	5	2.0	20	8.2	8	3.3
	Intermediate	26	10.5	34	13.8	44	17.8	65	26.5	32	13.1
	Advanced	121	49.0	116	47.0	121	49.0	110	44.9	130	53.1
	Advanced High	93	37.7	89	36.0	77	31.2	50	20.4	75	30.6

**PROGRESSION FROM
2013 TO 2014**

Number Rated Both Years N (%) Progressed	2014 Level	2013 Level			
		Beg	Int	Adv	Adv High
65 25 (38.5%)	Beginning	0			
	Intermediate	2	5		
	Advanced	0	11	35	
	Advanced High	0	1	11	
57 16 (28.1%)	Beginning	0			
	Intermediate	7	8		
	Advanced	1	2	33	
	Advanced High	0	0	6	
44 27 (61.4%)	Beginning	0			
	Intermediate	1	5		
	Advanced	0	5	12	
	Advanced High	0	1	20	
25 18 (72.0%)	Beginning	0			
	Intermediate	0	0		
	Advanced	0	1	7	
	Advanced High	0	1	16	
191 86 (45.0%)	Beginning	0			
	Intermediate	10	18		
	Advanced	1	19	87	
	Advanced High	0	3	53	

■ Indicates students who progressed at least one level from 2013 to 2014.

Test	Subtest	Year	Percent Tested		All Students			African American			Hispanic			White			District		
			%	Dist %	N	Mean	% at BMRK*	N	Mean	% at BMRK*	N	Mean	% at BMRK*	N	Mean	% at BMRK*	N	Mean	% at BMRK*
SAT	Critical Reading	2011-12	35.7	55.7	76	403	9.2	26	384	0.0	37	414	13.5	13	411	15.4	4,495	416	18.8
		2012-13	30.1	55.4	65	403	6.2	12	350	0.0	36	406	5.6	16	431	12.5	4,644	416	19.5
		2013-14	26.3	53.1	59	424	20.3	11	388	0.0	37	422	18.9	9	454	33.3	4,203	418	20.7
	Mathematics	2011-12	35.7	55.7	76	416	17.1	26	397	19.2	37	434	16.2	13	405	15.4	4,495	446	29.8
		2012-13	30.1	55.4	65	443	16.9	12	373	0.0	36	453	22.2	16	468	12.5	4,644	445	29.0
		2013-14	26.3	53.1	59	432	23.7	11	390	0.0	37	433	21.6	9	459	44.4	4,203	440	27.4
	Writing	2011-12	35.7	55.7	76	398	5.3	26	376	0.0	37	405	8.1	13	422	7.7	4,495	408	15.9
		2012-13	30.1	55.4	65	396	4.6	12	341	0.0	36	408	5.6	16	406	0.0	4,644	406	16.1
		2013-14	26.3	53.1	59	412	11.9	11	375	0.0	37	410	10.8	9	448	22.2	4,203	411	16.9
ACT	English	2011-12	31.5	37.1	67	16	34.3	23	16	34.8	34	15	32.4	8	18	50.0	2,995	15	33.3
		2012-13	35.6	29.3	77	14	24.7	12	13	8.3	45	14	15.6	18	17	55.6	2,454	16	34.0
		2013-14	52.7	42.0	118	14	20.3	41	13	9.8	58	15	19.0	15	17	46.7	3,324	15	29.3
	Mathematics	2011-12	31.5	37.1	67	18	16.4	23	18	13.0	34	18	17.6	8	18	25.0	2,995	18	22.7
		2012-13	35.6	29.3	77	17	11.7	12	16	0.0	45	17	11.1	18	17	16.7	2,454	19	24.4
		2013-14	52.7	42.0	118	17	10.2	41	16	4.9	58	17	8.6	15	18	26.7	3,324	18	21.8
	Reading	2011-12	31.5	37.1	67	17	23.9	23	18	30.4	34	16	20.6	8	19	25.0	2,995	17	23.7
		2012-13	35.6	29.3	77	17	15.6	12	15	0.0	45	16	8.9	18	19	38.9	2,454	17	26.5
		2013-14	52.7	42.0	118	16	20.3	41	15	14.6	58	17	22.4	15	20	26.7	3,324	17	23.8
	Science	2011-12	31.5	37.1	67	18	9.0	23	18	8.7	34	17	8.8	8	20	12.5	2,995	18	10.8
		2012-13	35.6	29.3	77	17	5.2	12	16	0.0	45	17	4.4	18	18	5.6	2,454	18	12.7
		2013-14	52.7	42.0	118	18	5.1	41	16	0.0	58	18	6.9	15	19	6.7	3,324	18	8.7
Composite	2011-12	31.5	37.1	67	17	-	23	17	-	34	17	-	8	19	-	2,995	17	-	
	2012-13	35.6	29.3	77	16	-	12	15	-	45	16	-	18	18	-	2,454	18	-	
	2013-14	52.7	42.0	118	16	-	41	15	-	58	17	-	15	19	-	3,324	17	-	

*See the NOTES report for information about college-readiness benchmarks set by The College Board (SAT) and ACT, Inc.

Grade	Subtest	Year	All			African American			Hispanic			White			Other			District		
			N	Mean	% at BMRK*	N	Mean	% at BMRK*	N	Mean	% at BMRK*	N	Mean	% at BMRK*	N	Mean	% at BMRK*	N	Mean	% at BMRK*
9	Critical Reading	2011	48	37		9	34		23	36		16	40		0			1,979	39	
		2012	28	36		3	*		16	36		7	39		1	*		1,924	39	
		2013	21	37		5	*		11	36		5	*		0			1,788	39	
	Mathematics	2011	48	38		9	33		23	37		16	42		0			1,979	40	
		2012	28	35		3	*		16	34		7	39		1	*		1,924	40	
		2013	21	38		5	*		11	37		5	*		0			1,788	40	
	Writing	2011	48	38		9	37		23	36		16	40		0			1,979	39	
		2012	28	36		3	*		16	36		7	41		1	*		1,924	39	
		2013	21	35		5	*		11	32		5	*		0			1,788	39	
10	Critical Reading	2011	243	34	15.2	63	33	11.1	133	33	12.0	43	36	27.9	3	*	*	7,988	36	25.4
		2012	279	36	15.8	64	34	4.7	165	35	15.8	48	39	29.2	0			8,427	37	23.1
		2013	320	34	10.6	51	33	2.0	201	34	10.0	61	36	19.7	3	*	*	8,854	36	23.3
	Mathematics	2011	243	35	13.2	63	34	4.8	133	36	14.3	43	38	18.6	3	*	*	7,988	38	24.5
		2012	279	35	12.9	64	34	9.4	165	35	9.1	48	37	29.2	0			8,427	38	24.5
		2013	320	34	5.9	51	32	2.0	201	34	5.5	61	34	11.5	3	*	*	8,854	37	19.6
	Writing	2011	243	34	12.8	63	32	4.8	133	34	12.0	43	35	20.9	3	*	*	7,988	36	22.7
		2012	279	35	12.5	64	33	3.1	165	35	11.5	48	38	25.0	0			8,427	37	23.7
		2013	320	33	11.3	51	31	5.9	201	33	10.4	61	34	19.7	3	*	*	8,854	36	21.0
11	Critical Reading	2011	181	38	18.2	34	33	2.9	96	38	17.7	47	41	29.8	3	*	*	3,980	41	33.2
		2012	222	37	10.8	45	37	4.4	123	37	11.4	49	37	12.2	2	*	*	4,007	41	27.4
		2013	279	37	14.7	60	36	6.7	169	36	11.2	49	40	36.7	0			3,787	42	32.8
	Mathematics	2011	181	39	18.2	34	35	8.8	96	38	17.7	47	41	25.5	3	*	*	3,980	43	38.0
		2012	222	38	11.3	45	38	6.7	123	38	8.9	49	38	18.4	2	*	*	4,007	43	33.0
		2013	279	37	10.4	60	36	5.0	169	36	7.7	49	40	24.5	0			3,787	44	33.1
	Writing	2011	181	37	11.6	34	34	0.0	96	37	10.4	47	40	21.3	3	*	*	3,980	40	28.7
		2012	222	36	15.3	45	35	6.7	123	37	17.9	49	36	14.3	2	*	*	4,007	41	33.0
		2013	279	36	13.3	60	35	8.3	169	35	10.1	49	38	30.6	0			3,787	41	32.5

*See the NOTES report for information about college readiness benchmarks set by The College Board for PSAT

Exams Taken		Average Score		Exams Passed		
N	Dist	Score	Dist	N	%	Dist

ALL EXAMS

555	18,984	1.4	1.9	46	8.3	25.1
------------	--------	------------	-----	-----------	------------	------

Computer Science A

1	139	*	3.8	*	*	86.3
----------	-----	---	-----	---	---	------

English Literature & Composition

148	2,374	1.3	1.8	4	2.7	18.0
------------	-------	------------	-----	----------	------------	------

Government & Politics: United States

44	1,420	1.1	1.3	0	0.0	7.0
-----------	-------	------------	-----	----------	------------	-----

United States History

74	2,570	1.3	1.5	6	8.1	12.6
-----------	-------	------------	-----	----------	------------	------

Exams Taken		Mean Score		Passed		
School	Dist	School	Dist	N	%	Dist

Calculus AB

13	960	1.7	2.5	2	15.4	45.7
-----------	-----	------------	-----	----------	-------------	------

Economics: Macroeconomics

38	755	1.0	1.4	0	0.0	12.5
-----------	-----	------------	-----	----------	------------	------

Environmental Science

40	986	1.5	1.7	4	10.0	19.8
-----------	-----	------------	-----	----------	-------------	------

Spanish Language

28	831	3.0	3.5	21	75.0	87.5
-----------	-----	------------	-----	-----------	-------------	------

Exams Taken		Mean Score		Passed		
School	Dist	School	Dist	N	%	Dist

Calculus BC

8	248	1.0	3.4	0	0.0	69.8
----------	-----	------------	-----	----------	------------	------

English Language & Composition

140	3,194	1.3	1.8	6	4.3	18.1
------------	-------	------------	-----	----------	------------	------

European History

9	164	1.1	1.5	0	0.0	18.3
----------	-----	------------	-----	----------	------------	------

Spanish Literature

12	133	2.2	2.7	3	25.0	57.9
-----------	-----	------------	-----	----------	-------------	------

SEMESTER 1 TESTS

Number Tested	Averages				% Passing		District % Passing	
	% Items Correct	Scale Score	Course Mark	Course Mark (no ACP)	ACP	Course	ACP	Course

ALGEBRA I

281	37.0	68.0	79.3	81.3	38.1	92.1	41.1	81.4
-----	------	------	------	------	------	------	------	------

ALGEBRA II

270	34.0	67.0	78.1	80.0	28.1	92.2	47.9	86.0
-----	------	------	------	------	------	------	------	------

ALGEBRA II PRE-AP

61	40.2	69.6	83.1	85.5	42.6	98.4	55.3	89.4
----	------	------	------	------	------	------	------	------

ART I

130	71.0	78.3	90.5	92.7	82.3	99.2	79.1	94.8
-----	------	------	------	------	------	------	------	------

BIOLOGY

251	49.9	72.1	77.6	78.6	63.7	85.5	61.9	82.5
-----	------	------	------	------	------	------	------	------

BIOLOGY PRE-AP

69	61.1	74.1	85.8	87.8	73.9	100.0	71.3	90.4
----	------	------	------	------	------	-------	------	------

CHEMISTRY

252	38.5	70.7	75.9	76.8	58.3	89.6	49.7	83.5
-----	------	------	------	------	------	------	------	------

CHEMISTRY PRE-AP

60	50.4	73.9	81.4	82.7	76.7	95.0	64.2	93.3
----	------	------	------	------	------	------	------	------

ECONOMICS

79	53.9	69.3	79.8	81.7	50.6	98.7	69.6	95.1
----	------	------	------	------	------	------	------	------

ENGLISH I

239	46.8	67.4	78.0	79.9	41.0	94.5	50.7	84.8
-----	------	------	------	------	------	------	------	------

ENGLISH I FOR ESL

12	46.8	69.9	82.3	84.5	58.3	100.0	54.2	88.3
----	------	------	------	------	------	-------	------	------

SEMESTER 2 TESTS

Number Tested	Averages				% Passing		District % Passing	
	% Items Correct	Scale Score	Course Mark	Course Mark (no ACP)	ACP	Course	ACP	Course

ALGEBRA I

--	--	--	--	--	--	--	--	--

ALGEBRA II

179	39.5	68.7	76.9	78.3	38.0	91.6	55.9	84.7
-----	------	------	------	------	------	------	------	------

ALGEBRA II PRE-AP

59	55.9	74.5	85.8	87.8	74.6	100.0	69.3	87.2
----	------	------	------	------	------	-------	------	------

ART I

126	69.3	75.3	90.0	92.6	77.0	99.2	75.5	93.6
-----	------	------	------	------	------	------	------	------

BIOLOGY

--	--	--	--	--	--	--	--	--

BIOLOGY PRE-AP

--	--	--	--	--	--	--	--	--

CHEMISTRY

234	62.9	77.7	76.1	75.8	85.5	85.5	59.3	78.5
-----	------	------	------	------	------	------	------	------

CHEMISTRY PRE-AP

60	66.8	77.9	80.5	81.0	88.3	95.0	68.3	91.1
----	------	------	------	------	------	------	------	------

ECONOMICS

2	*	*	*	*	*	*	57.3	*
---	---	---	---	---	---	---	------	---

ENGLISH I

247	60.6	73.1	78.4	79.3	68.8	87.9	58.2	81.7
-----	------	------	------	------	------	------	------	------

ENGLISH I FOR ESL

13	61.1	77.5	83.2	84.1	84.6	100.0	62.6	91.7
----	------	------	------	------	------	-------	------	------

SEMESTER 1 TESTS

Number Tested	Averages				% Passing		District % Passing	
	% Items Correct	Scale Score	Course Mark	Course Mark (no ACP)	ACP	Course	ACP	Course

ENGLISH I PRE-AP

68	56.7	72.3	71.7	71.6	66.2	67.6	71.2	92.1
----	------	------	------	------	------	------	------	------

ENGLISH II

220	56.9	71.3	77.5	78.7	57.3	87.6	59.6	83.5
-----	------	------	------	------	------	------	------	------

ENGLISH II FOR ESL

7	57.5	75.0	83.0	84.4	71.4	100.0	50.3	93.8
---	------	------	------	------	------	-------	------	------

ENGLISH II PRE-AP

66	54.1	73.0	72.7	72.6	72.7	74.2	73.6	91.4
----	------	------	------	------	------	------	------	------

ENGLISH III

196	64.1	74.4	77.4	77.9	76.5	97.9	55.7	89.1
-----	------	------	------	------	------	------	------	------

ENGLISH IV

143	61.0	74.0	81.0	82.3	81.1	95.8	67.9	91.6
-----	------	------	------	------	------	------	------	------

ENVIRONMENTAL SYSTEMS

66	72.0	80.0	79.6	79.5	93.9	98.5	75.5	97.3
----	------	------	------	------	------	------	------	------

FRENCH I

2	*	*	*	*	*	*	68.1	*
---	---	---	---	---	---	---	------	---

FRENCH II

37	30.4	59.8	81.6	85.4	10.8	94.6	61.5	87.9
----	------	------	------	------	------	------	------	------

GEOMETRY

268	47.3	71.8	75.4	76.1	61.9	85.5	61.9	83.3
-----	------	------	------	------	------	------	------	------

GEOMETRY PRE-AP

31	50.1	68.1	81.9	84.4	58.1	96.8	64.6	89.6
----	------	------	------	------	------	------	------	------

SEMESTER 2 TESTS

Number Tested	Averages				% Passing		District % Passing	
	% Items Correct	Scale Score	Course Mark	Course Mark (no ACP)	ACP	Course	ACP	Course

ENGLISH I PRE-AP

61	63.3	76.6	71.1	70.1	85.2	68.9	78.6	93.9
----	------	------	------	------	------	------	------	------

ENGLISH II

224	60.2	72.3	78.6	79.7	65.6	88.4	61.3	80.9
-----	------	------	------	------	------	------	------	------

ENGLISH II FOR ESL

8	53.4	70.9	82.4	84.4	50.0	100.0	62.3	87.4
---	------	------	------	------	------	-------	------	------

ENGLISH II PRE-AP

66	58.6	73.0	68.8	68.0	60.6	53.0	72.2	89.9
----	------	------	------	------	------	------	------	------

ENGLISH III

170	65.8	71.5	74.0	74.4	60.6	85.3	52.9	82.6
-----	------	------	------	------	------	------	------	------

ENGLISH IV

--	--	--	--	--	--	--	--	--

ENVIRONMENTAL SYSTEMS

4	*	*	*	*	*	*	62.8	*
---	---	---	---	---	---	---	------	---

FRENCH I

--	--	--	--	--	--	--	--	--

FRENCH II

39	31.2	56.1	70.5	73.0	5.1	51.3	58.4	81.8
----	------	------	------	------	-----	------	------	------

GEOMETRY

264	52.6	74.6	79.0	79.8	69.3	91.3	66.7	79.7
-----	------	------	------	------	------	------	------	------

GEOMETRY PRE-AP

33	47.6	71.9	84.3	86.4	60.6	97.0	66.0	89.1
----	------	------	------	------	------	------	------	------

SEMESTER 1 TESTS

Number Tested	Averages				% Passing		District % Passing	
	% Items Correct	Scale Score	Course Mark	Course Mark (no ACP)	ACP	Course	ACP	Course

GOVERNMENT

80	46.3	65.7	78.7	81.0	41.3	98.8	58.9	94.1
----	------	------	------	------	------	------	------	------

HS BAND: LISTENING AND MUSIC ELEMENTS

25	68.7	96.5	101.4	52.0	100.0	67.0	98.9
----	------	------	-------	------	-------	------	------

HS HEALTH EDUCATION

121	65.7	77.1	81.6	82.3	82.6	97.5	81.1	96.5
-----	------	------	------	------	------	------	------	------

IPC

--	--	--	--	--	--	--	--	--

MATH MODELS W/APPLICATIONS

5	*	*	*	*	*	*	55.0	*
---	---	---	---	---	---	---	------	---

PHYSICS

259	41.5	70.2	78.3	79.8	55.2	91.9	37.8	85.3
-----	------	------	------	------	------	------	------	------

PHYSICS PRE-AP

89	49.4	70.3	78.8	80.4	58.4	87.6	53.9	94.5
----	------	------	------	------	------	------	------	------

PRE-CALCULUS

47	49.1	68.2	81.3	83.6	48.9	100.0	53.4	87.9
----	------	------	------	------	------	-------	------	------

PRE-CALCULUS PRE-AP

63	57.0	71.3	79.7	81.2	63.5	95.2	72.6	93.1
----	------	------	------	------	------	------	------	------

READING II FOR ESL

7	40.1	64.0	76.4	78.6	28.6	100.0	48.7	94.2
---	------	------	------	------	------	-------	------	------

READING III FOR ESL

1	*	*	*	*	*	*	55.1	*
---	---	---	---	---	---	---	------	---

SEMESTER 2 TESTS

Number Tested	Averages				% Passing		District % Passing	
	% Items Correct	Scale Score	Course Mark	Course Mark (no ACP)	ACP	Course	ACP	Course

GOVERNMENT

1	*	*	*	*	*	*	61.0	*
---	---	---	---	---	---	---	------	---

HS BAND: LISTENING AND MUSIC ELEMENTS

21	73.4	93.4	96.9	76.2	95.2	84.0	96.5
----	------	------	------	------	------	------	------

HS HEALTH EDUCATION

103	65.6	75.5	79.2	79.9	79.6	98.1	76.7	95.7
-----	------	------	------	------	------	------	------	------

IPC

3	*	*	*	*	*	*	54.5	*
---	---	---	---	---	---	---	------	---

MATH MODELS W/APPLICATIONS

5	*	*	*	*	*	*	58.5	*
---	---	---	---	---	---	---	------	---

PHYSICS

172	58.6	78.2	76.9	76.6	80.8	87.8	53.6	82.4
-----	------	------	------	------	------	------	------	------

PHYSICS PRE-AP

85	48.2	72.8	77.0	77.7	64.7	81.2	62.4	91.8
----	------	------	------	------	------	------	------	------

PRE-CALCULUS

5	*	*	*	*	*	*	48.2	*
---	---	---	---	---	---	---	------	---

PRE-CALCULUS PRE-AP

41	36.1	63.1	75.9	78.2	14.6	85.4	62.6	90.8
----	------	------	------	------	------	------	------	------

READING II FOR ESL

8	65.5	77.0	79.0	79.3	87.5	100.0	70.2	91.1
---	------	------	------	------	------	-------	------	------

READING III FOR ESL

1	*	*	*	*	*	*	64.7	*
---	---	---	---	---	---	---	------	---

SEMESTER 1 TESTS

Number Tested	Averages				% Passing		District % Passing	
	% Items Correct	Scale Score	Course Mark	Course Mark (no ACP)	ACP	Course	ACP	Course

SPANISH I

131	62.6	75.1	81.8	83.0	60.3	93.0	71.3	91.2
-----	------	------	------	------	------	------	------	------

SPANISH II

201	65.9	77.3	78.2	78.4	68.7	83.0	72.2	93.0
-----	------	------	------	------	------	------	------	------

U.S. HISTORY

205	63.2	71.7	80.1	81.5	59.5	94.6	51.5	86.9
-----	------	------	------	------	------	------	------	------

WORLD GEOGRAPHY

247	45.2	67.7	78.9	80.9	36.4	89.8	48.7	86.7
-----	------	------	------	------	------	------	------	------

WORLD GEOGRAPHY PRE-AP

70	61.6	74.4	86.4	88.5	70.0	100.0	75.0	94.9
----	------	------	------	------	------	-------	------	------

WORLD HISTORY

238	45.9	68.8	78.7	80.4	41.2	96.6	48.3	90.0
-----	------	------	------	------	------	------	------	------

WORLD HISTORY PRE-AP

69	63.5	75.6	83.7	85.1	79.7	97.1	65.5	95.0
----	------	------	------	------	------	------	------	------

SEMESTER 2 TESTS

Number Tested	Averages				% Passing		District % Passing	
	% Items Correct	Scale Score	Course Mark	Course Mark (no ACP)	ACP	Course	ACP	Course

SPANISH I

130	68.5	79.0	75.0	74.3	71.5	76.9	72.9	84.3
-----	------	------	------	------	------	------	------	------

SPANISH II

170	68.4	78.9	77.3	77.0	74.1	80.0	76.5	89.2
-----	------	------	------	------	------	------	------	------

U.S. HISTORY

1	*	*	*	*	*	*	58.7	*
---	---	---	---	---	---	---	------	---

WORLD GEOGRAPHY

226	54.7	72.8	78.6	79.6	64.6	84.1	57.7	82.9
-----	------	------	------	------	------	------	------	------

WORLD GEOGRAPHY PRE-AP

74	63.6	75.7	84.1	85.6	79.7	98.6	79.5	94.5
----	------	------	------	------	------	------	------	------

WORLD HISTORY

229	49.6	66.4	77.7	79.7	34.9	89.5	58.5	85.3
-----	------	------	------	------	------	------	------	------

WORLD HISTORY PRE-AP

70	58.6	69.0	80.9	83.0	42.9	91.4	65.4	94.3
----	------	------	------	------	------	------	------	------